



Project Development & Environment (PD&E) Study
Public Kick-Off Meeting
Willoughby Boulevard Extension
from State Road (SR) 714/Monterey Road to US 1/SR 5/Federal Highway
Martin County, Florida

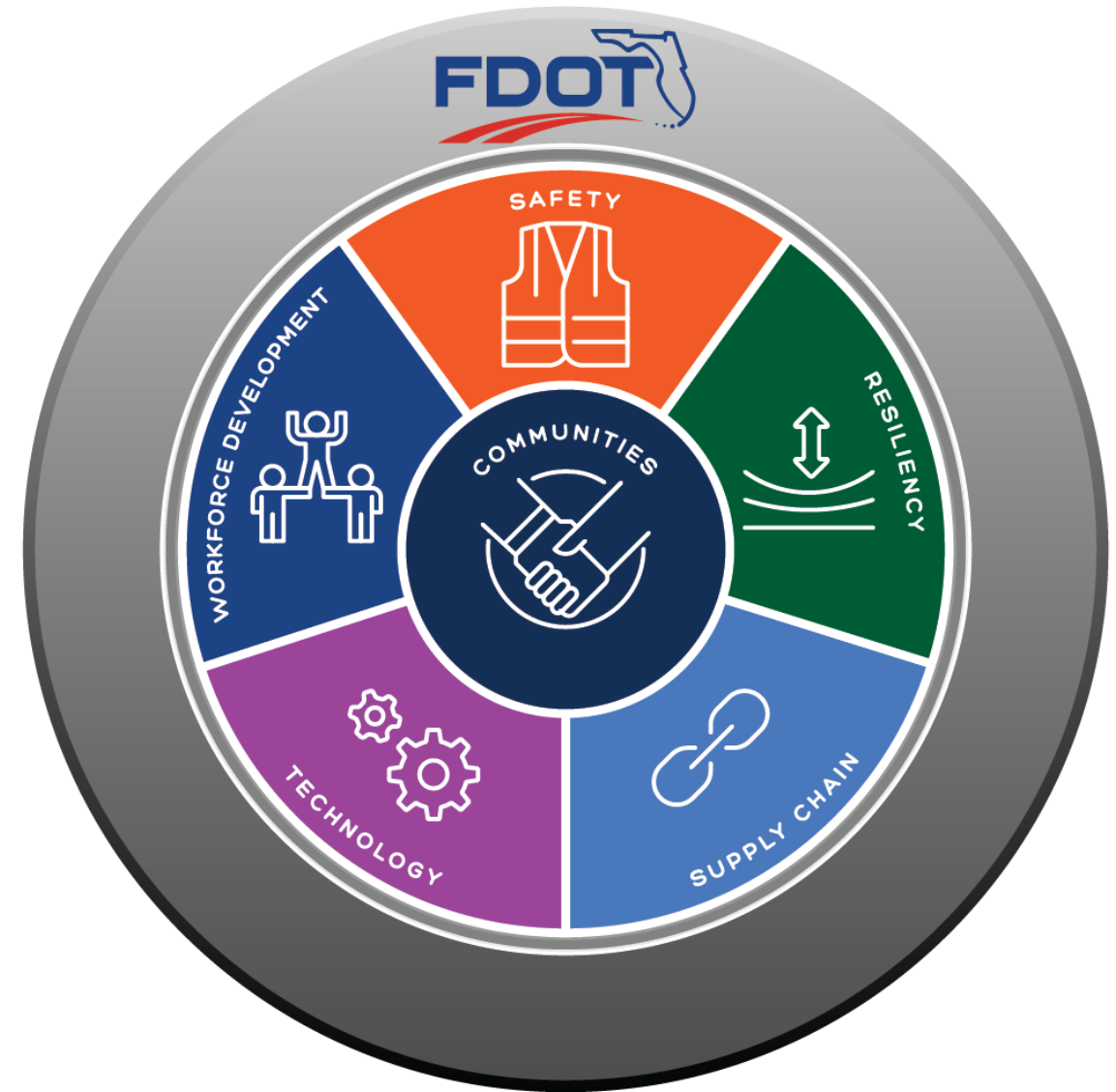


Florida Department of Transportation
Financial Project ID: 419669-3-22-03
ETDM No: 14512

June 25, 2025, at 6:00 p.m. (Virtual Meeting)
June 26, 2025, at 6:00 p.m. (In-Person Meeting)

FDOT Compass

Community feedback is at the core of all we do. FDOT works with the public to balance their community vision with the community's transportation needs. This is routine on all our projects to ensure Florida's infrastructure is safe, resilient, and efficient for many years into the future.



Project Benefits



Communities

- Placed on Martin MPO's Long Range Transportation Plan Needs Assessment list in 1994.
- Enhance mobility and ease of access between residential communities, businesses, and schools.
- Improve connectivity of existing sidewalks and bicycle lanes by constructing pedestrian facilities to address major gaps.



Safety

- Reduce Congestion and Improve Bicycle/Pedestrian Facilities



Resiliency

- Provide stormwater management that addresses future water levels and groundwater conditions to operate effectively in the future.



Supply Chain

- Improve traffic operations to accommodate the growing transportation demand for goods and services.
- Improve connectivity of existing and planned development to regional roadway system.

Project Team



María Formoso, P.E., P.M.P.
Project Manager
Florida Department of
Transportation (FDOT)



Chris Rizzolo, P.E.
Consultant Project
Manager
AECOM



Walna Calixte
Community Outreach
Specialist
Infinite Source
Communications Group

Non-Discrimination Policy

The Florida Department of transportation complies with various non-discrimination policies, laws and regulations. Public participation is solicited without regard to race, color, national origin, age, sex, religion, disability, or family status. Persons who require accommodations under the Americans with Disabilities Act or persons who require translation services (free of charge) should make this request to the FDOT Project Manager at least seven days prior to the meeting.

Welcome all Elected Officials

Meeting Format

Virtual:

- ❖ Date: Wednesday, June 25, 2025
- ❖ Time: 6:00 p.m.
- ❖ Location: GoToWebinar

In-Person:

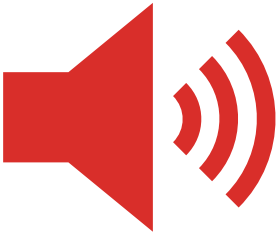
- ❖ Date: Thursday, June 26, 2025
- ❖ Time: 6:00 p.m.
- ❖ Location: 10th Street Community Center
724 SE 10th Street, Stuart, FL 34994



Rules of Engagement



- This Public Meeting is being recorded.
- If you experience technical difficulties, please contact 1-800-418-0524 so that a member of our technical support team may assist you.

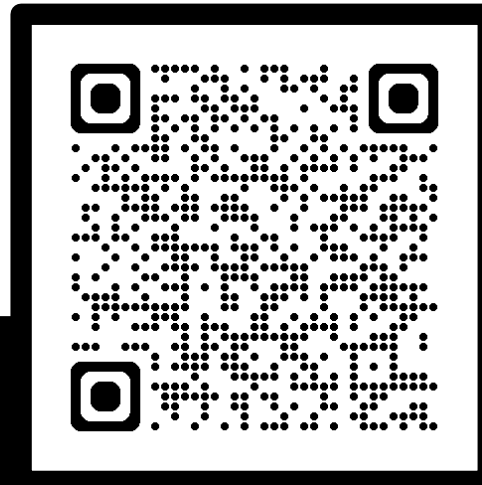


- All **Virtual** attendees **will remain muted** throughout the Meeting.
- **Virtual** attendees are also welcome to submit any questions/comments using the GoToWebinar control panel at any time or use the “**Raise Hand**” button on your control panel and a member of our team will respond to/unmute you during the open discussion.

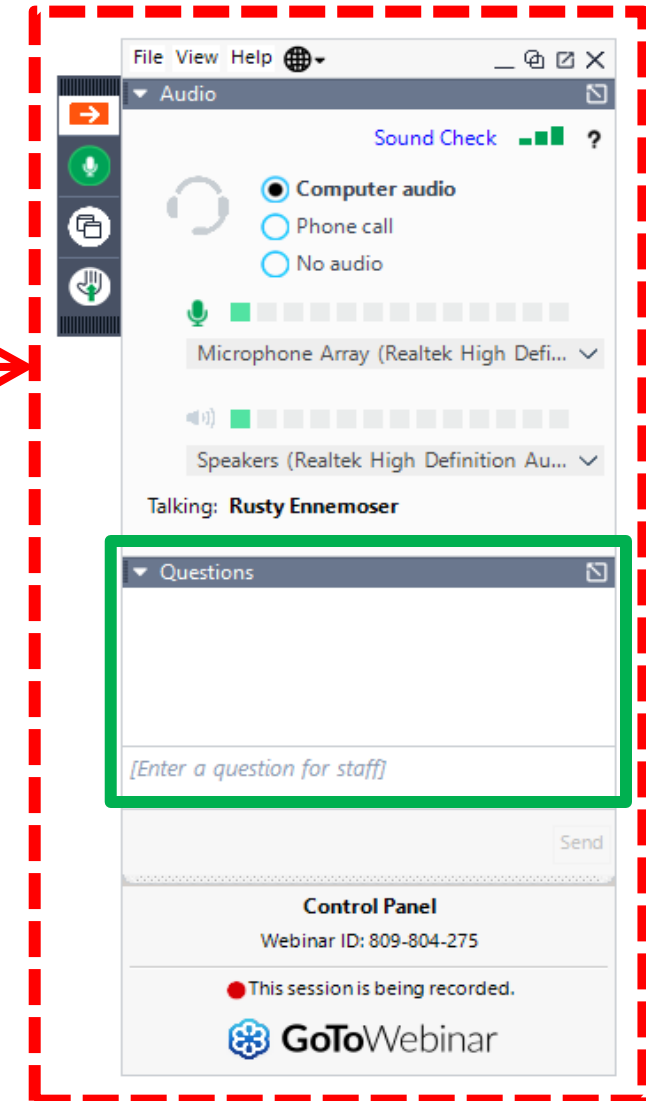


- If you are participating via Telephone and have questions/comments, feel free to submit them to the **FDOT Project Manager María Formoso, P.E., P.M.P. at Maria.Formoso@dot.state.fl.us** via email after the meeting and a response will be provided.

GoToWebinar Control Panel

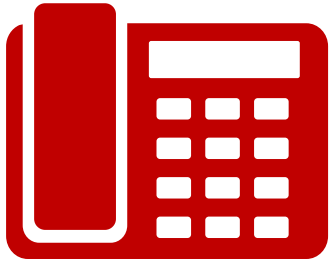


<https://www.fdot.gov/projects/willoughbypde/>

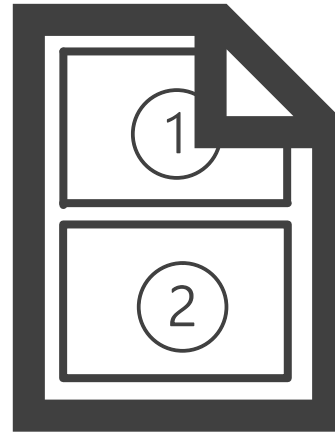


For Dial-In by Phone Attendees

Dial-in
attendees are
‘listen only’



If you requested or downloaded the presentation



Paper copy of
presentation

“Now
showing
slide 10.”



Presenter will indicate
slide number

<https://www.fdot.gov/projects/willoughbypde/>

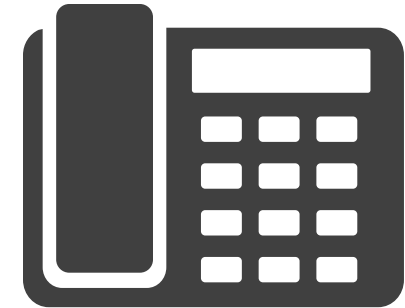
To report a technical issue...



Type in
Question box on
GoToWebinar Control
Panel



Send an email to
Jaela@iscprgroup.com



Call
1-800-418-0524

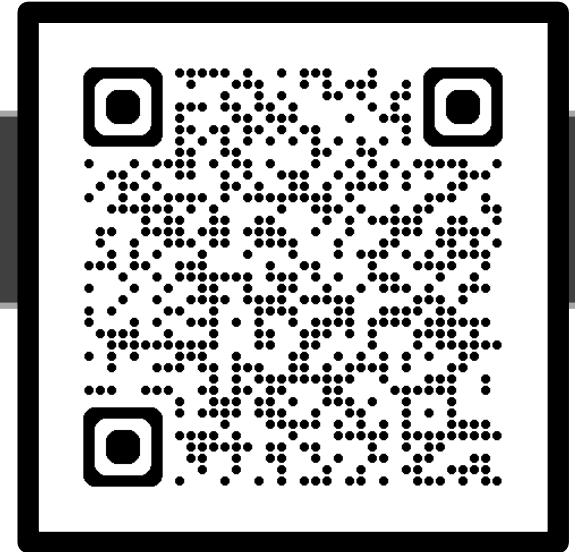
Submitting Comments and Questions

Multiple ways to submit:

1. Online using GoToWebinar
2. By email to FDOT Project Manager
3. By U.S. mail to FDOT Project Manager
4. By phone, after the meeting

Project Website

[https://www.fdot.gov/
projects/willoughbypde/](https://www.fdot.gov/projects/willoughbypde/)



FDOT Project Manager Contact Information

María Formoso, P.E., P.M.P.

Florida Department of Transportation

3400 West Commercial Boulevard

Fort Lauderdale, Florida 33309

(954) 777-4677

Maria.Formoso@dot.state.fl.us

Submitting Comments or Questions via GoToWebinar

❖ Submit using the Questions Box:

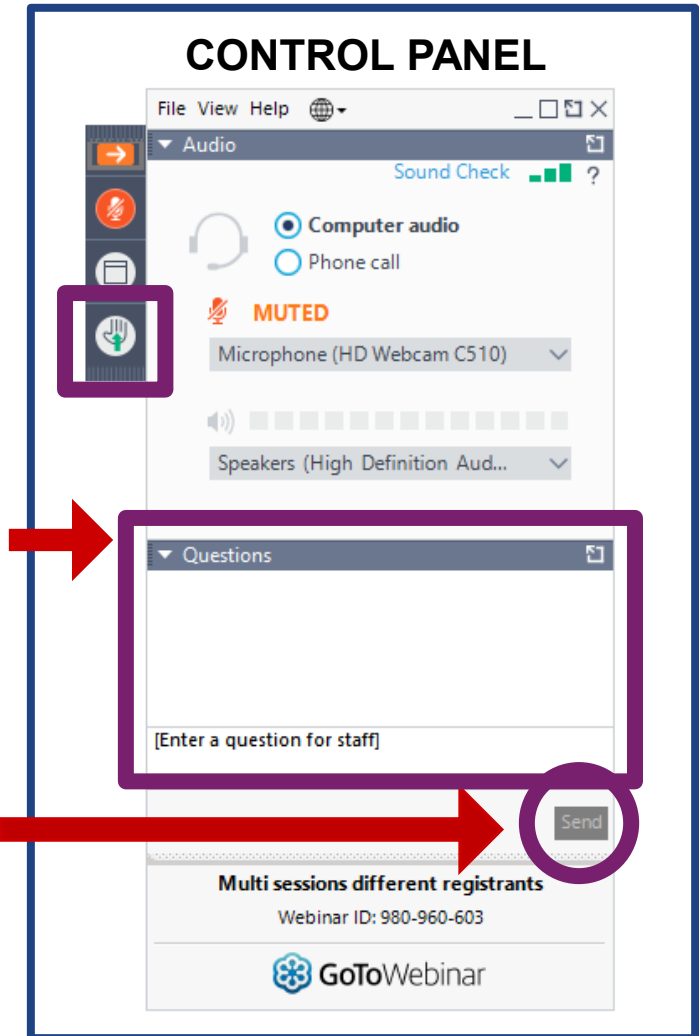
1. Locate the Questions Box in the Control Panel
2. Type your question or comment
3. Click “Send” button

❖ During the Q&A session:

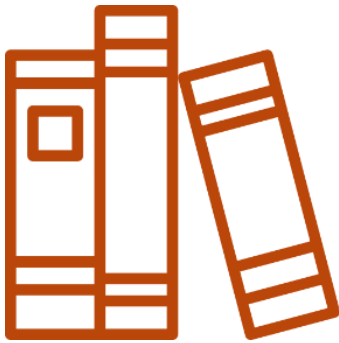
1. Raise Hand
2. Please unmute yourself when called upon

Question Box

Send Button



About Your Comments and Questions



All comments and questions are part of the **Public Record.**

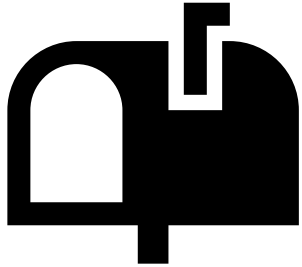


You can submit comments and questions throughout the project.



All registrants will receive a link to the **meeting recording.**

Public Meeting - Public Notice



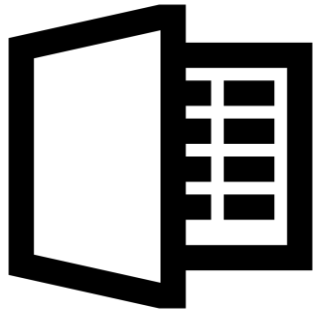
Property owner/tenant letters



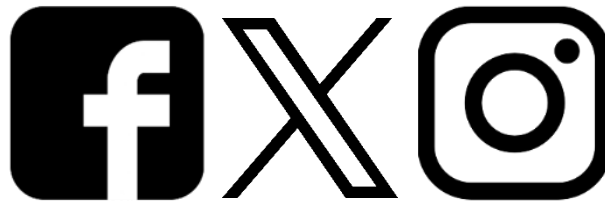
Emails to project contacts list



Newspaper



Florida Administrative Register



Social media



Project website

Title VI of the Civil Rights Act of 1964

The Florida Department of Transportation is required to comply with various non-discrimination laws and regulations, including Title VI of the Civil Rights Act of 1964. Public participation is solicited without regard to race, color, national origin, age, sex, religion, disability, or family status. Persons wishing to express concerns relative to FDOT compliance with Title VI may do so by contacting:

Sharon SinghHagyan

District Four Title VI Coordinator

3400 West Commercial Boulevard

Fort Lauderdale, Florida 33309

(954) 777-4190

(866) 336-8435, Ext. 4190 (Toll Free)

sharon.singhhagyan@dot.state.fl.us

Stefan Kulakowski

State Title VI Coordinator

605 Suwannee Street, MS 65

Tallahassee, Florida 32399

(850) 414-4742

(866) 374-3368, Ext. 4742 (Toll Free)

stefan.kulakowski@dot.state.fl.us

FDOT NEPA Assignment

The environmental review, consultation, and other actions required by applicable federal environmental laws for this project are being, or have been, carried out by the Florida Department of Transportation (FDOT) pursuant to 23 United States Code (U.S.C.) §327 and Memorandum of Understanding dated May 26, 2022, and executed by the Federal Highway Administration and FDOT.



Transportation Development Process

1 PLANNING

2 PROJECT DEVELOPMENT AND
ENVIRONMENT (PD&E) STUDY

3 DESIGN

4 RIGHT OF WAY ACQUISITION
(IF NEEDED)

5 CONSTRUCTION

6 MAINTENANCE

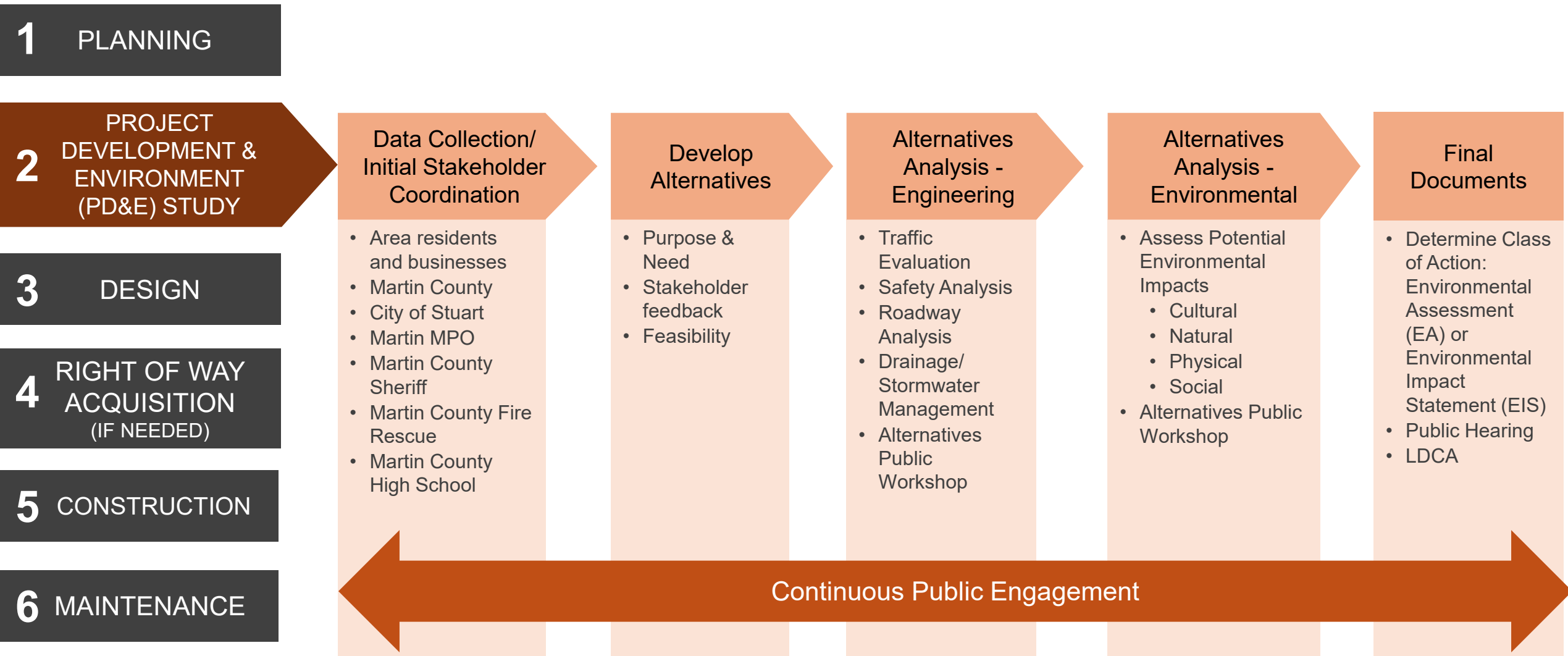
Why is a PD&E Study performed?

- To determine the best alternative to address the purpose and need
- To evaluate the potential environmental and social effects
- To include public participation to help shape the project
- To comply with federal, state, and local laws

During the PD&E Study:

- The community will have several opportunities for input on the project
- Project effects to the environment will be avoided or minimized
- Coordination with federal, state and local agencies will occur
- Project reports and plans will be available for public view

PD&E Study Process



Purpose and Need

Purpose

- ❖ Provide system linkage
- ❖ Accommodate bicycles and pedestrians
- ❖ Improve bicyclist safety

Need

- ❖ Willoughby Boulevard does not connect to US 1/Federal Highway, resulting in circuitous routes for traffic.
- ❖ Existing routing increases travel time congestion.
- ❖ Limited bicycle and pedestrian facilities are available in the project area.
- ❖ SR 714/Willoughby Boulevard intersection is a high bicyclist crash area.

Objectives

- ❖ Evaluate alternatives to improve bicycle and pedestrian interconnectivity and system linkage throughout the study area.
- ❖ Obtain **Location and Design Concept Acceptance (LDCA)** for a proposed alternative that meets the purpose and need.



Project Location

FPID: 419669-3-22-03
ETDM #: 14512

County: Martin
City: Stuart

Roadway: Willoughby Boulevard Extension
RR Crossings: None
Project Study Limits: Willoughby Boulevard Extension from State Road (SR) 714/Monterey Road to US 1/SR 5/Federal Highway

Project Scope

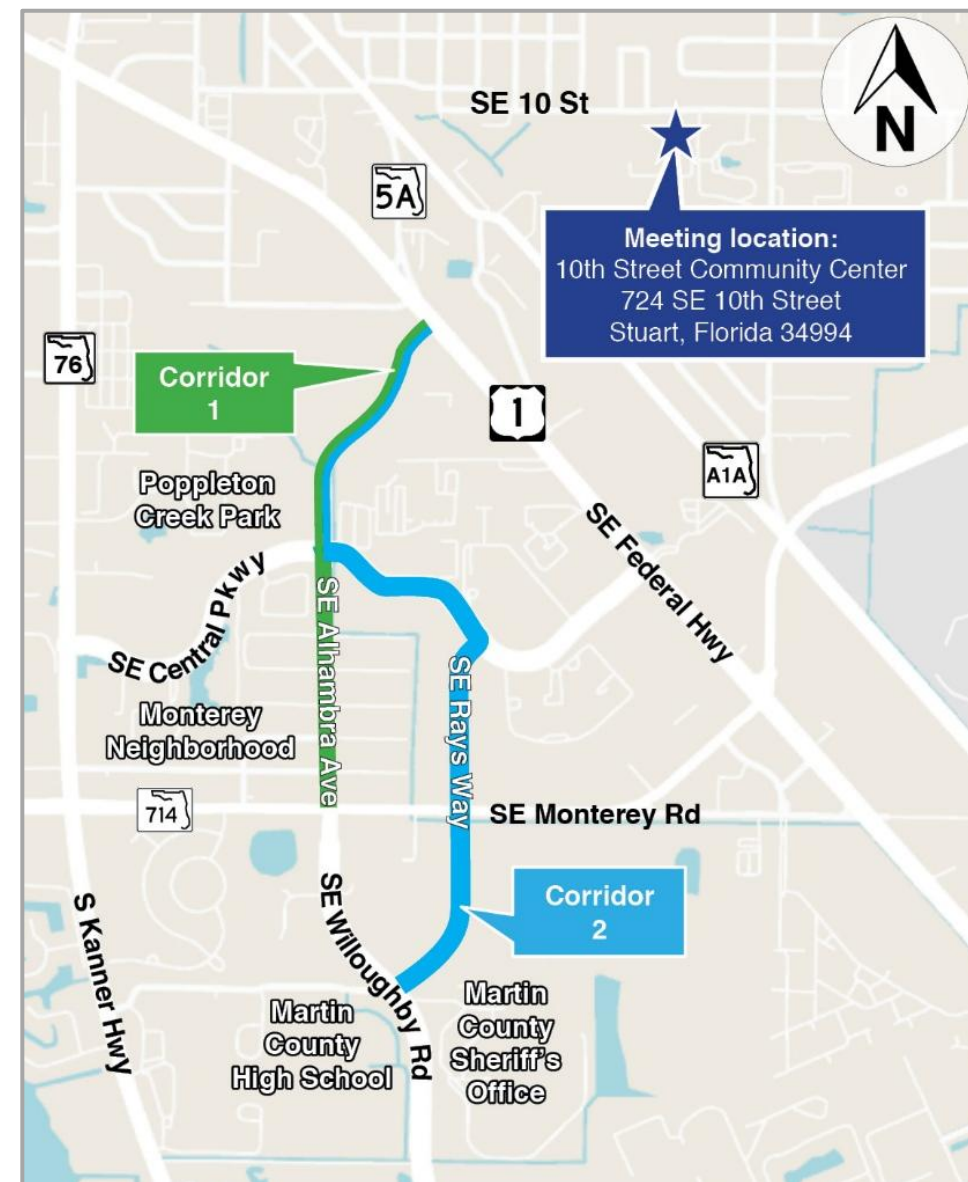
- ❖ Extending Willoughby Boulevard from its northern terminus at SR 714/Monterey Road to a logical and appropriate terminus at SR 5/US 1/Federal Highway

Corridor 1 (approximately 3/4 miles)

- Alhambra Avenue (1/4 miles)
- New roadway north to US 1/Federal Highway (1/2 miles)

Corridor 2 (approximately 1-1/4 miles)

- New roadway north to US 1/Federal Highway (1/2 miles)
- Rays Way (1/4 miles)
- Central Parkway (1/4 miles)
- New roadway south of SR 714/Monterey Road to Rays Way (1/4 miles)



Adjacent Projects and Previous Studies

Adjacent Projects

Project Name	Project FPID	Project Type	Project Phase
SR 714/Monterey Road at FEC Railroad Crossing	441636-2	Railroad Crossing Improvements	PD&E Study
SR 714/Monterey Road/Dixie Highway/Palm Beach Road	444405-2	Bike Lane/Sidewalk	Design
SR 714/Monterey Road from Citrus Boulevard to SW Martin Downs Boulevard	436870-1	Add Capacity	Construction
Cove Road from SR 76/Kanner Highway to SR 5/US 1	441700-1	Widening	PD&E Study
CR 713 from I-95 to SW Martin Highway	441699-1	Widening	PD&E Study

Previous Studies

The Corridor Feasibility Study Report for Willoughby Boulevard from SR 714/Monterey Road to US 1/Federal Highway (FPID: 419669-3)

Existing Conditions – Roadway

Willoughby Boulevard

- ❖ North-South County Road
- ❖ Off-System road
- ❖ Four vehicular travel lanes (two in each direction)
- ❖ Sidewalks on both sides
- ❖ Posted Speed Limit: 45 miles per hour (mph)
- ❖ 12 Key intersections
- ❖ Intersection Control Evaluations (ICE) for 5 major intersections
 1. Willoughby Boulevard at proposed extension of Rays Way (modified intersection)
 2. Proposed extension of Willoughby Boulevard at Central Parkway (future intersection)
 3. Proposed extension of Willoughby Boulevard at US 1 (future intersection)
 4. SR 714 at Rays Way
 5. Central Parkway at Rays Way



Existing Conditions – Roadway

Alhambra Avenue

- ❖ County Road
- ❖ Two Vehicular Travel Lanes (One in each direction)
- ❖ Sidewalks on west side from Monterey Road to Seville Street
- ❖ Posted Speed Limit: 25 miles per hour (mph)

Rays Way

- ❖ County Road
- ❖ Two Vehicular Travel Lanes (One in each direction)
- ❖ Sidewalks on west side from Monterey Road to Central Parkway
- ❖ Posted Speed Limit: 25 miles per hour (mph)

Engineering

Traffic and Safety

- Existing Traffic Operations
- Future Traffic Demand
- Crash Data
- Safety Analysis



Roadway

- Design Speed
- Horizontal Geometry
- Vertical Geometry
- Bicycle/Pedestrian Accommodations
- Maintenance of Traffic



Right-of-Way

- Residential properties
- Business properties
- City of Stuart Corridor Preservation



Other Considerations

- Communities
- Utilities
- Drainage
- Geotechnical
- Constructability



Engineering - Safety

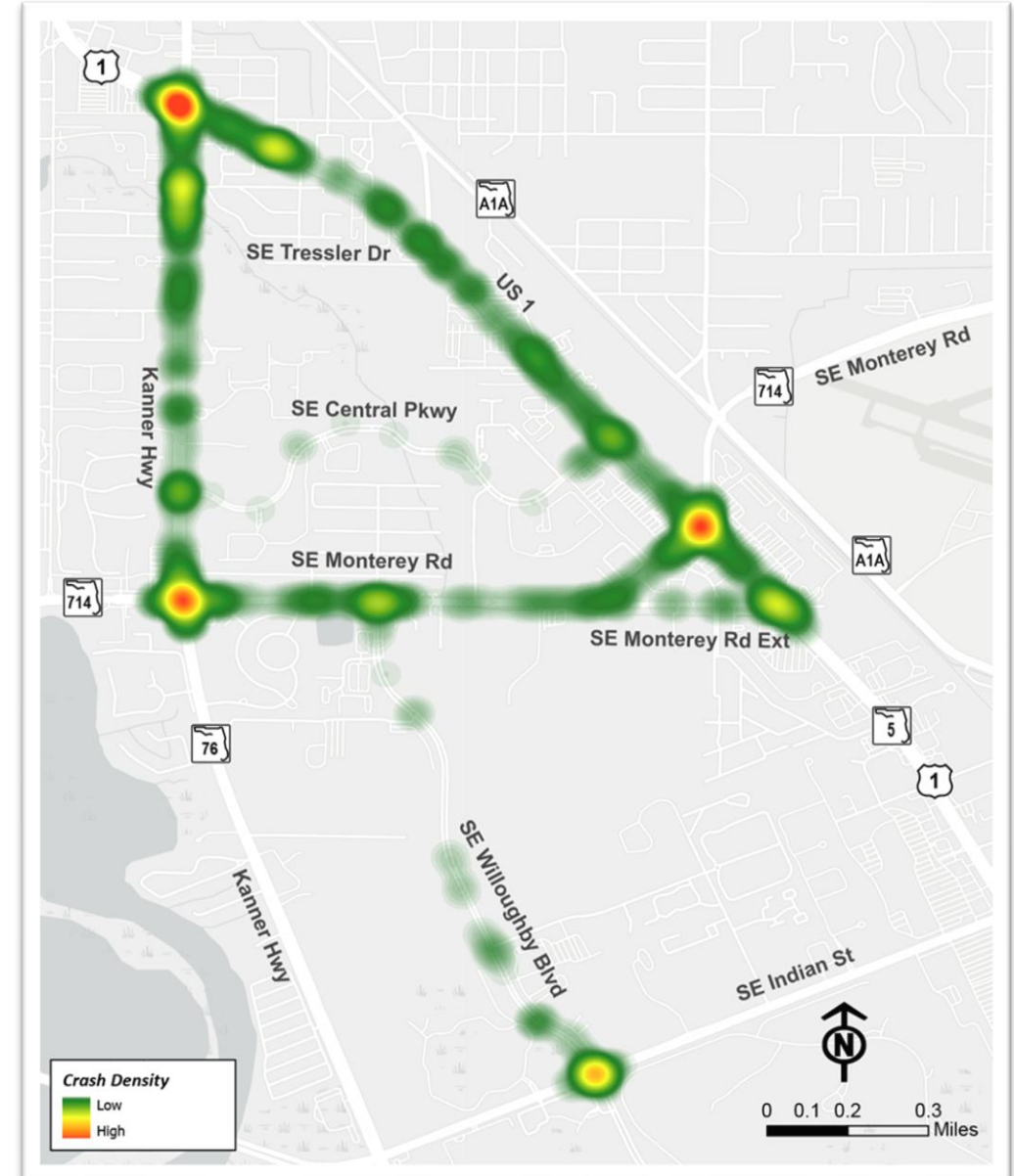
Safety Analysis

❖ Overall (2019 to 2023)

- 1,695 crashes
- 3 fatalities

❖ Existing Segments

- US 1/Federal Highway from SR 76/Kanner Highway to Central Parkway: 274 crashes (2 fatalities)
- SR 76/Kanner Highway from US 1/Federal Highway to Monterey Road: 214 crashes (1 fatality)
- Central Parkway from SR 76/Kanner Highway to US 1/Federal Highway: 17 crashes
- SR 714/Monterey Road from SR 76/Kanner Highway to US 1/Federal Highway: 91 crashes
- Monterey Road Ext from SR 714/Monterey Road to US 1/Federal Highway: 12 crashes
- Rays Way from Central Parkway to SR 714/Monterey Road Ext: 0 crashes
- Willoughby Boulevard from SR 714/Monterey Road to Indian Street: 31 crashes



Engineering - Safety

❖ Comprehensive Safety Study Approach

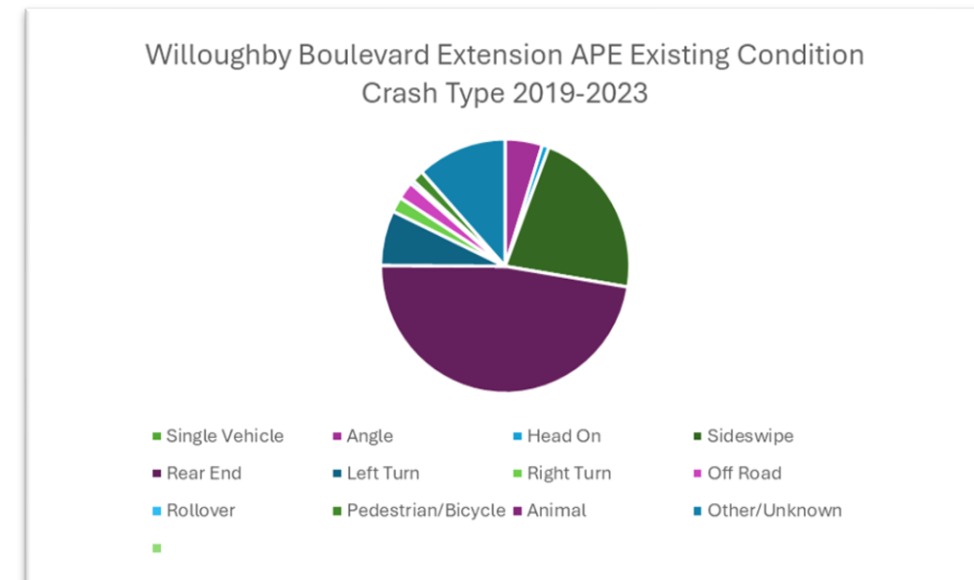
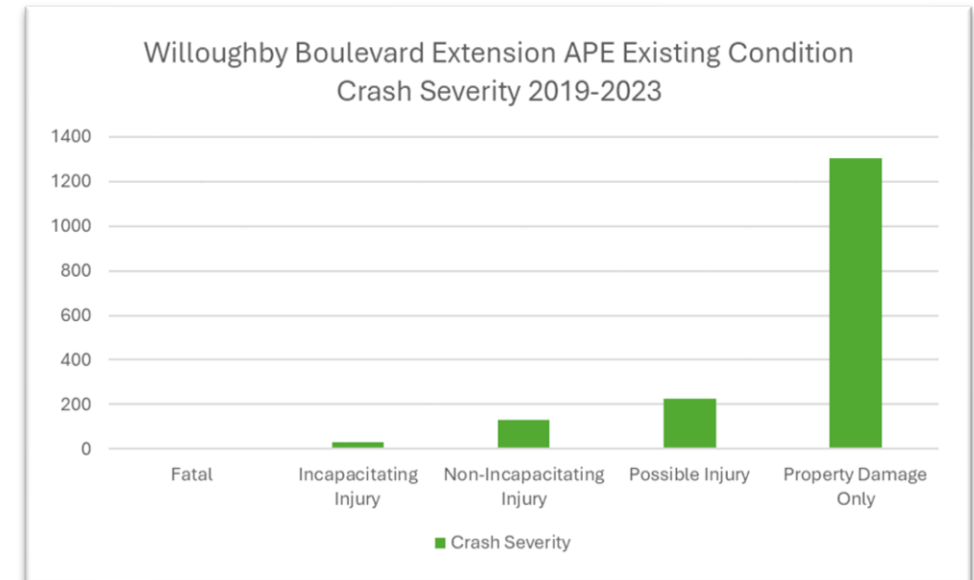
- Recommended Target Speed Memorandum
- Highway Safety Manual (HSM) - Predictive Method
- Utilize FDOT HSM Spreadsheets

❖ Study Objectives

- Categorize crashes for detailed analysis
- Conduct qualitative assessments for a nuanced understanding of area crash patterns

❖ Outcomes Sought

- Identify contributing factors
- Provide proper mitigation measures
- Safety enhancements to reduce crash frequency and severity
- Enhance safety conditions for all road users, especially bicyclists



Engineering - Right-of-Way

Corridor 1

- May require right of way from residential parcels along Alhambra Avenue
- Will require right of way between San Jose Street and US 1/Federal Highway

Corridor 2

- Will require right of way acquisition of vacant non-residential properties near southern segment
- Potential for right of way acquisition at SR 714/Monterey Road intersection
- May require right of way acquisition from adjacent commercial, retail, and industrial properties along existing roadway segments of Rays Way



Environmental

❖ Key Project Issue

Natural

- ❖ **Protected Species and Habitat**
 - Wetlands and Other Surface Waters
 - Essential Fish Habitat
 - Floodplains
- ❖ **Water Resources (Water Quality and Quantity)**

Cultural

- Section 106 (NHPA)
- ❖ **Historic Sites/Districts**
 - Archaeological Sites
- ❖ **Section 4(f)**
- ❖ **Recreational Areas**

Physical

- ❖ **Highway Traffic Noise**
- ❖ **Air Quality**
- ❖ **Contamination**
 - Utilities and Railroads
 - Construction

Social & Economic

- ❖ **Communities**
- ❖ **Economic**
- ❖ **Land Use Changes**
- ❖ **Mobility**
- ❖ **Aesthetic Effects**
- ❖ **Relocation Potential**

Required Agency Coordination



Environmental - Natural

Protected Species & Habitat

❖ USFWS Consultation Areas

- Existing habitat conditions are unfavorable for potential occurrence
- Florida scrub jay, Everglade snail kite, crested caracara, Florida grasshopper sparrow, and red-cockaded woodpecker

❖ Threatened and Endangered Species

❖ Potential Species

❖ Scrub-jay Habitat Mitigations

- Scrub-jay conservation bank credits or payment to FFWCC scrub-jay land acquisition funds

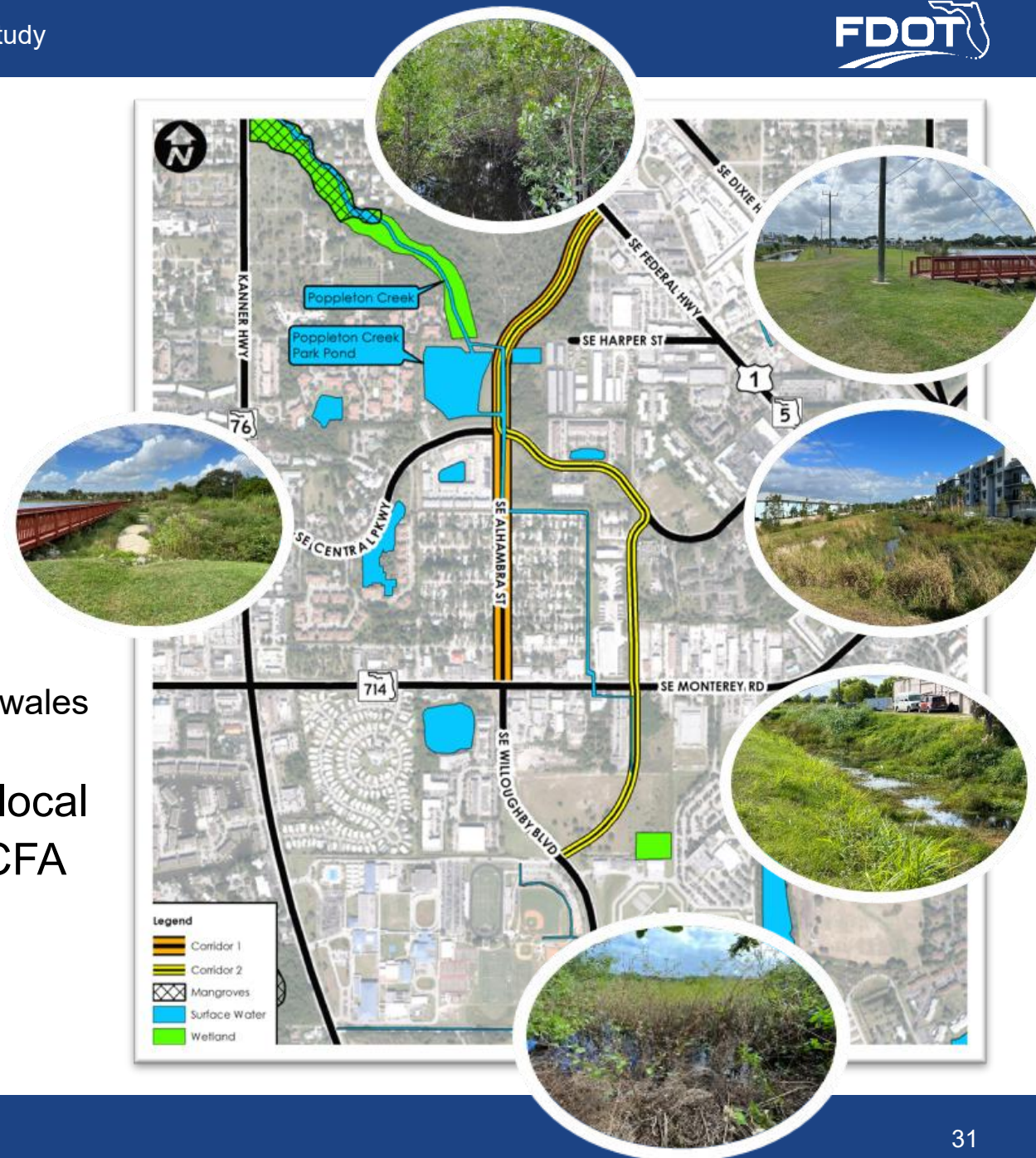
Potential involvement with protected species and habitat is moderate.



Environmental - Natural

Wetlands

- ❖ Identify Potential Impacts
 - Wetlands
 - Surface Waters
- ❖ Identify Potential Mitigation
- ❖ Wetlands and Surface Waters (Moderate Effects Anticipated)
 - Poppleton Creek/Ditch
 - Poppleton Creek Park detention pond
 - Two unnamed stormwater ponds and several drainage swales
 - Shrub/herbaceous wetland/retention pond
- ❖ Unavoidable impacts can be mitigated through a local mitigation bank – credits will include wood stork CFA credits if necessary



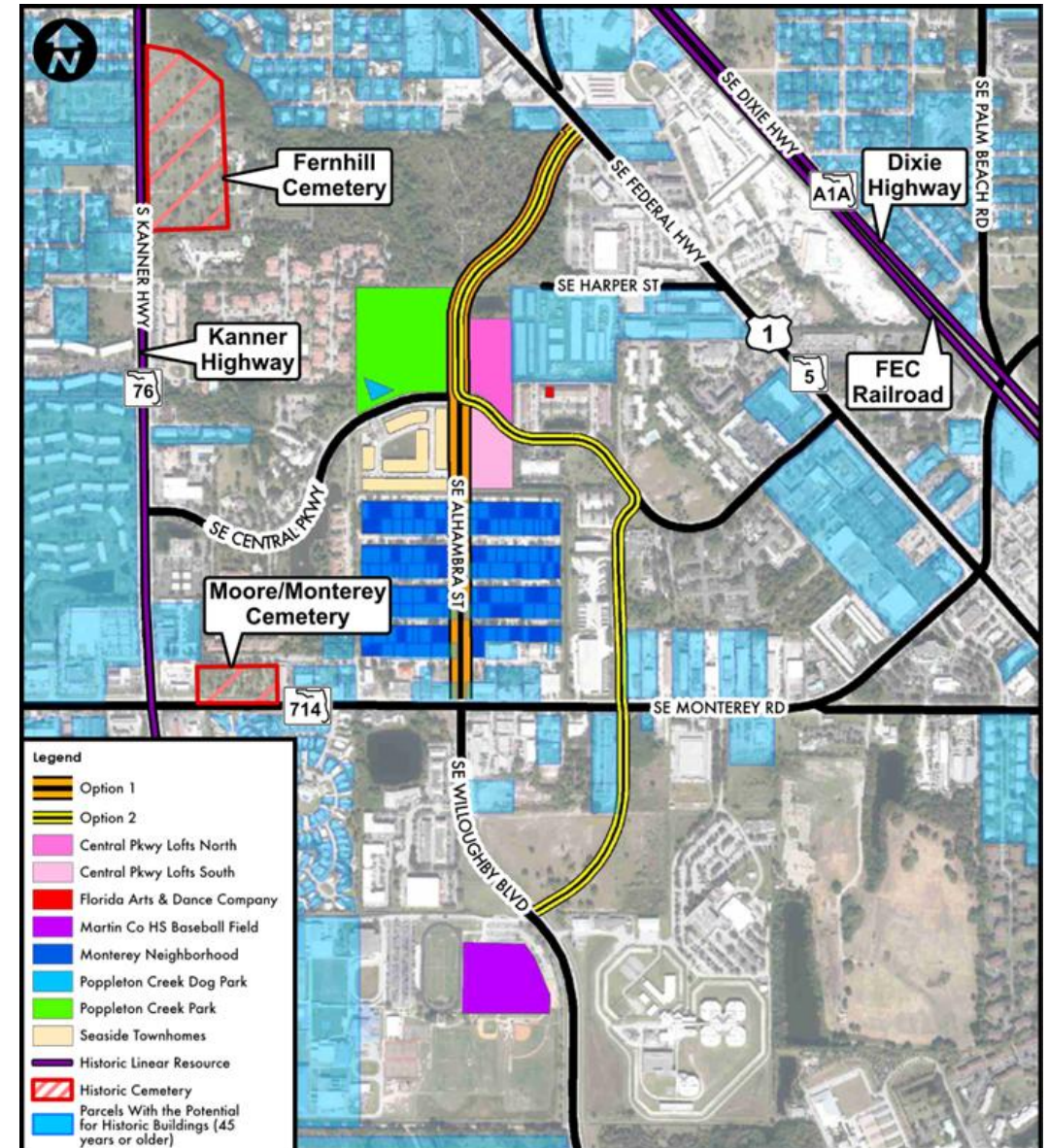
Environmental - Cultural

Historic/Archaeological

- ❖ No previously recorded historic properties with the Area of Potential Effect
- ❖ Corridor 1:
 - 10-12 Unrecorded Structures
- ❖ Corridor 2:
 - 2-4 Unrecorded Structures
- ❖ Cemeteries:
 - One National Register ineligible and one potentially National Register Eligible

Section 4(f)

- ❖ Recreational Resources
 - Poppleton Creek Park and Dog Park
 - Alhambra Greenway



Environmental - Physical

Noise

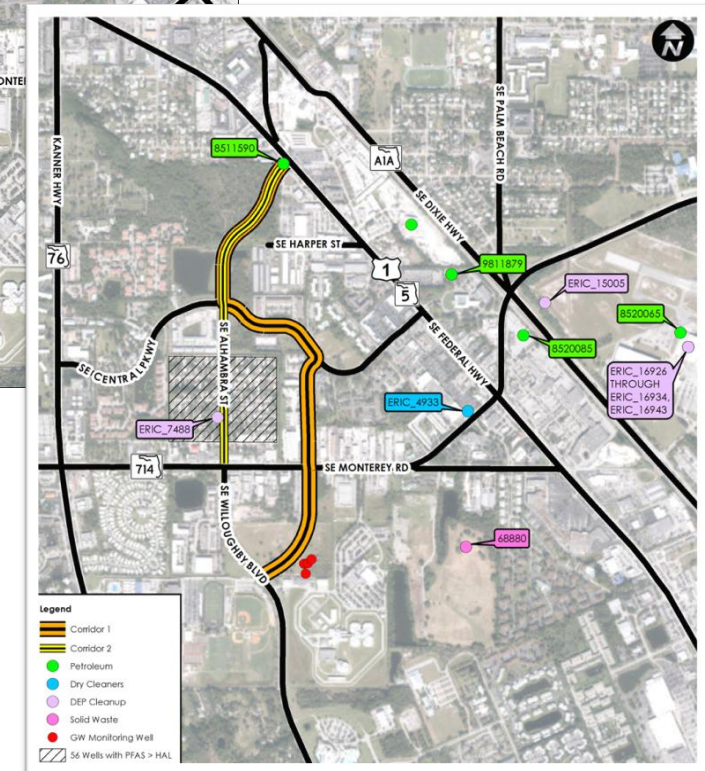
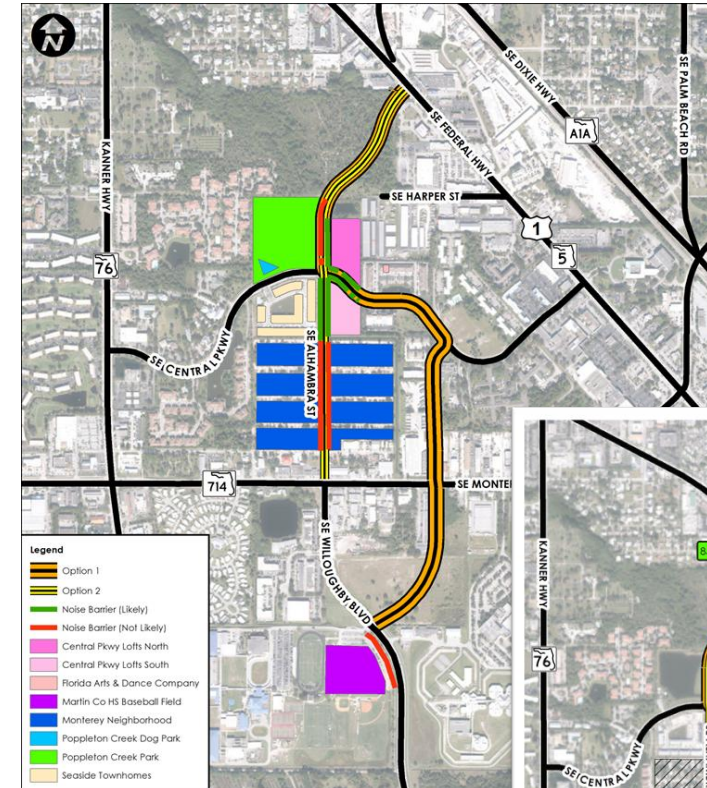
- ❖ Noise sensitive sites
- ❖ Reasonableness and feasibility
- ❖ Special Land Uses

Contamination

- ❖ Potential contamination sites present in project vicinity
- ❖ City reports toxaphene contaminants removed from soil in 2004, remnants may remain
- ❖ Ongoing City of Stuart PFAS Contamination Study

Utilities

- ❖ 9 Utility Agency Owners



Environmental - Social

Social

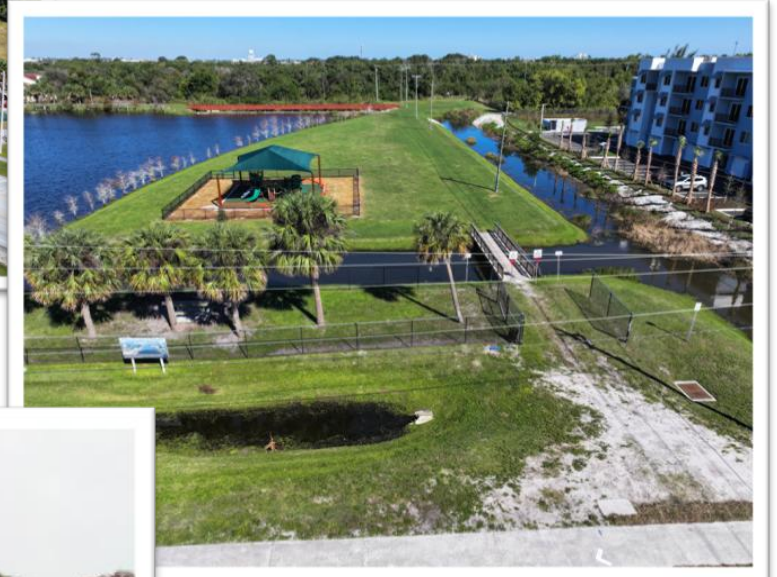
- ❖ Community Impacts
- ❖ Community Cohesion

Mobility

- ❖ Bicycle/pedestrian connectivity
- ❖ System linkage

Relocation Potential

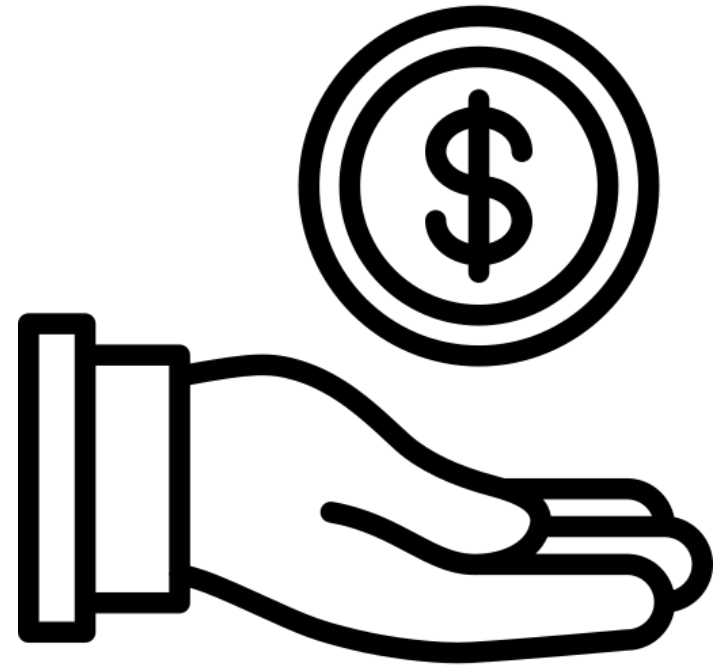
- ❖ Impacts will vary by alternative
- ❖ Assessed as the project progresses



Project Funding

FDOT Five Year Work Program

- ❖ July 1, 2025, to June 30, 2029
 - PD&E: Ongoing
 - Design: Not currently funded
 - Right-of-Way Acquisition: Not currently funded
 - Construction: Not currently funded
- ❖ Martin Metropolitan Planning Organization (MPO)
2045 Long Range Transportation Plan (LRTP)
- ❖ Martin MPO Transportation Improvement Plan
(TIP) Fiscal Year (FY) 2023 – FY 2027
- ❖ Martin MPO Capital Improvement Plan (CIP) FY
2022



Public Involvement

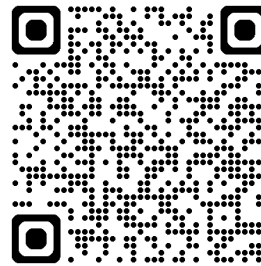
Public Meetings

- ❖ Virtual Kick-Off Meeting – June 25, 2025
- ❖ In-Person Kick-Off Meeting – June 26, 2025
- ❖ Public Alternatives Meeting – May 2026 (Tentative)
- ❖ Public Hearing – January 2028 (Tentative)

How to participate

- ❖ Attend Public Meetings
- ❖ Provide your input
- ❖ Visit the project webpage:

<https://www.fdot.gov/projects/willoughbypde/>



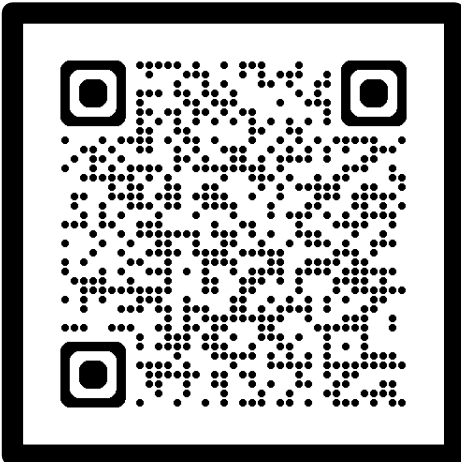
Stakeholder Meetings



Elected Officials
Local Businesses
Local Neighborhoods

Project Website

- ❖ We encourage you to become and stay involved throughout the entire project.
- ❖ Visit the project website to learn more about the study and to provide feedback.



Public Involvement Schedule

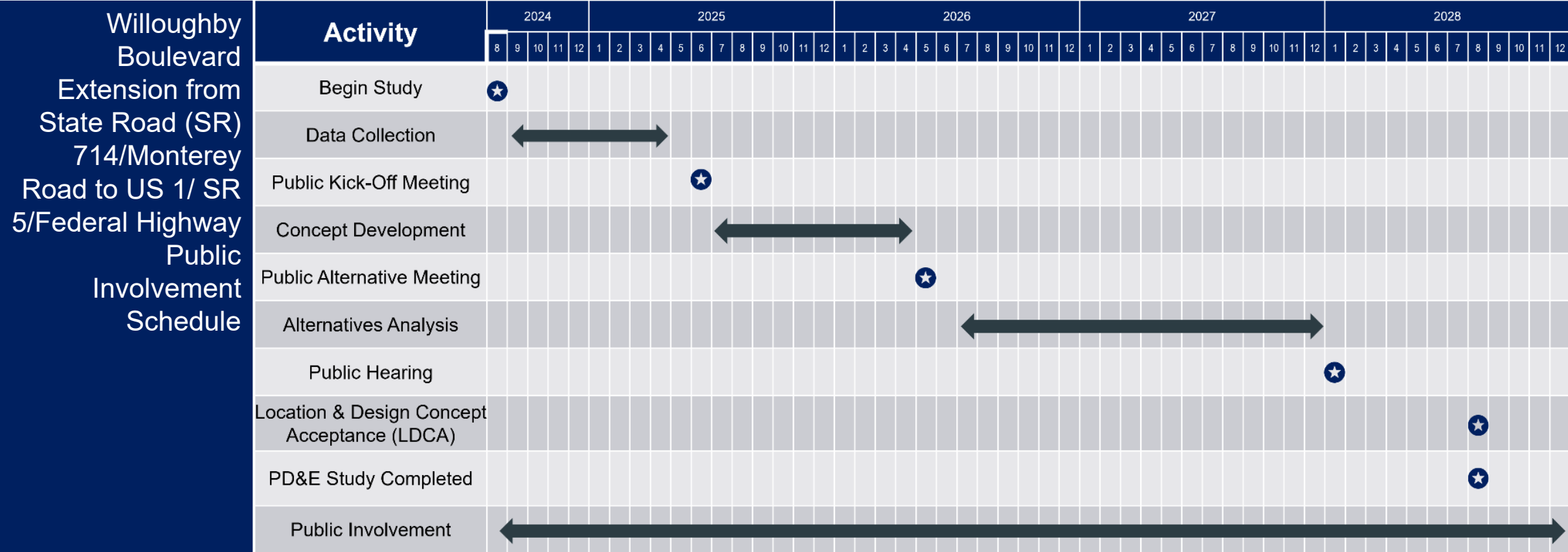
PD&E Study Began: August 2024

Public Kick-Off Meeting: June 2025

Public Alternatives Meeting: May 2026 (tentative)

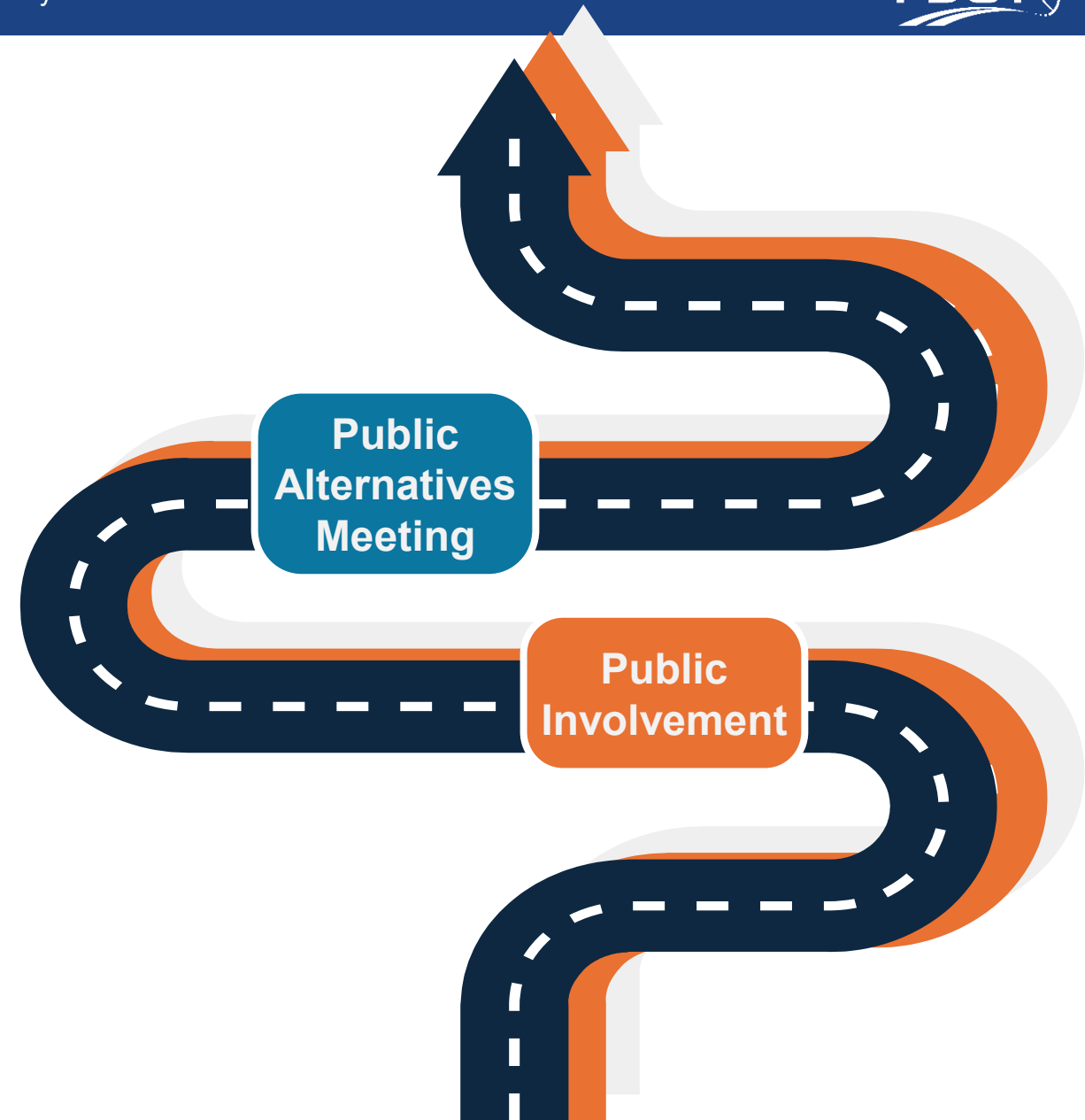
Public Hearing: January 2028 (tentative)

PD&E Study Complete: Anticipated August 2028



Next Steps

- Continue **Public Involvement**
- Develop Alternatives
- Prepare for **Public Alternatives Meeting**
- **FDOT Provides the opportunity and encourages the Public to give feedback throughout the project. Please provide your comments and questions.**



Questions & Answers

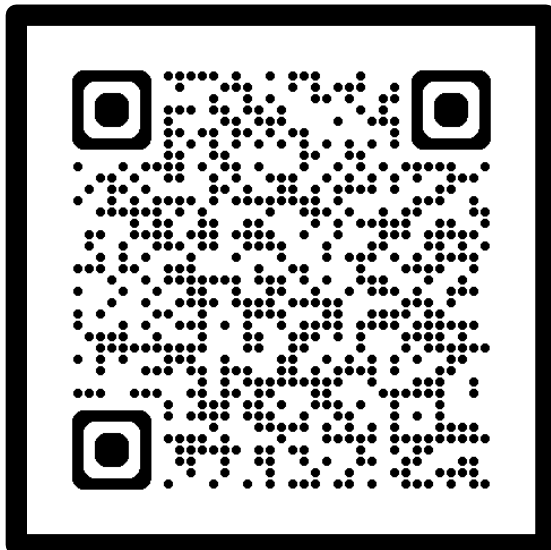


Thank you for participating!

Please submit your comments and questions

Project Website

<https://www.fdot.gov/projects/willoughbypde/>



FDOT Project Manager Contact Information

María Formoso, P.E., P.M.P.

Florida Department of Transportation
3400 West Commercial Boulevard
Fort Lauderdale, Florida 33309
(954) 777-4677

Maria.Formoso@dot.state.fl.us

Safe Summer Travel





www.FloridaFTP.com



ENGAGE WITH THE
2055 FLORIDA
TRANSPORTATION PLAN



**Thank you
for attending the
Public Kick-Off Meeting for the
Willoughby Boulevard PD&E Study**