

- DESIGN NOTES**
- POLE AND FOUNDATIONS ARE DESIGNED IN ACCORDANCE WITH THE FOLLOWING CODES:
 - AASHTO LRFD SPECIFICATIONS FOR STRUCTURAL SUPPORT FOR HIGHWAY SIGNS, LUMINAIRES AND TRAFFIC SIGNALS LATEST EDITION.
 - CERTAIN SECTIONS OF THE SPECIFICATIONS ABOVE ARE SUPERCEDED/MODIFIED BY "FDOT MODIFICATIONS TO LRFDLTS-1" THIS CAN BE FOUND AT THE FOLLOWING HYPERLINK (CLICK HERE FOR FDOT MODIFICATIONS TO LRFDLTS-1)
 - FDOT STANDARD SPECIFICATIONS 700-3.1
 - POLE ANALYSIS AND FOUNDATION DESIGN ARE BASED ON THE FOLLOWINGCRITERIA
 - DESIGN WIND SPEED (Vult): 110 MPH
 - RISK CATEGORY: II
 - EXPOSURE CATEGORY: C
 - TOPOGRAPHIC CATEGORY: 1
 - SEISMIC DESIGN CRITERIA:
 - SOIL SITE CLASS: D (ASSUMED)
 - SPECTRAL RESPONSE, S_s: 1.000g (MAXIMUM)
 - SPECTRAL RESPONSE, S₁: 0.400G (MAXIMUM)
 - SEISMIC DESIGN CATEGORY: B
 - SHOULD ANY OF THE SITE-SPECIFIC PARAMETERS BE HIGHER THAN WHAT IS NOTED ABOVE, THE EOR SHALL BE CONTACTED TO PROVIDE A REVISED DESIGN.
 - CONTRACTOR IS RESPONSIBLE FOR VERIFYING SOIL CONDITIONS PRIOR TO INSTALLATION.
 - FOUNDATION TO CONSIST OF CONCRETE SURROUNDING THE PROPOSED POLE WITH A MINMUM OF 3,000-PSI COMPRESSIVE STRENGTH.

- GENERAL & CONSTRUCTION NOTES**
- CONTRACTOR SHALL CONTACT DESIGNATED AGENCY TO LOCATE ALL UNDERGROUND UTILITIES PRIOR TO CONSTRUCTION.
 - CONTRACTOR SHALL APPLY AND OBTAIN AN APPROVED TRAFFIC CONTROL PLAN IN ACCORDANCE WITH MUTCD AND LOCAL JURISDICTION STANDARDS.
 - CONTRACTOR SHALL RESTORE ALL DISTURBED AREAS TO ORIGINAL SITE CONDITION TO THE SATISFACTION OF STATE DEPARTMENT OF TRANSPORTATION AND LOCAL JURISDICTION.
 - ALL WORK SHALL CONFORM TO APPLICABLE ELECTRICAL CODES EXCEPT WHEN STATE DEPARTMENT OF TRANSPORTATION OR LOCAL JURISDICTION STANDARDS SUPERSEDE.
 - ALL CONSTRUCTION SHALL BE IN ACCORDANCE WITH SPECIFICATIONS DEFINED BY THE STATE DEPARTMENT OF TRANSPORTATION OR LOCAL JURISDICTION, UNLESS SPECIFICALLY STATED OR SHOWN OTHERWISE HEREIN.

- ADA COMPLIANCE NOTES**
- ALL SIDEWALK CONSTRUCTION SHALL BE IN ACCORDANCE WITH ADA TITLE II, STATE DEPARTMENT OF TRANSPORTATION, AND LOCAL JURISDICTION STANDARDS,
 - STATE DEPARTMENT OF TRANSPORTATION CURRENT EDITION STANDARDS SHALL BE USED FOR PEDESTRIAN CONTROL PLANS WHEN CLOSURE OF SIDEWALK IS REQUIRED FOR CONSTRUCTION.
 - MINIMUM CLEAR PEDESTRIAN ACCESS ROUTE (PAR) SHALL BE 48" WIDE.
 - NO OBSTRUCTION IS PERMITTED ALONG THE WIDTH OF THE SIDEWALK. UP TO AN ELEVATION OD 7'-0" ABOVE GRADE.

TYPICAL DETAIL
FLOCK SAFETY CAMERA ON
12'-0" FLOCK POLE

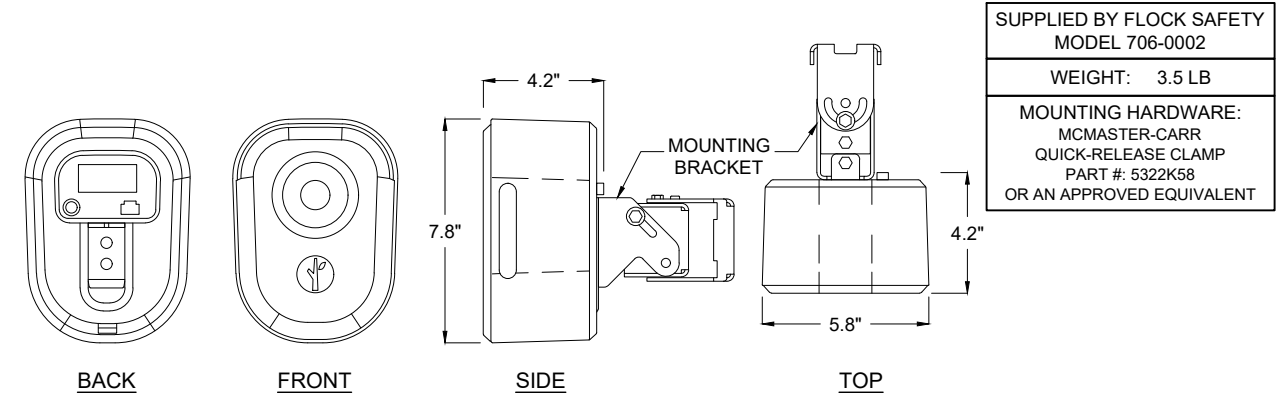
flock safety
1170 HOWELL MILL ROAD SUITE 210
ATLANTA, GA 30318

REV	DATE	BY	DESCRIPTION
-	-	-	-
-	-	-	-
-	-	-	-
-	-	-	-
0	07/21/2025	JMW	TYP. DETAIL

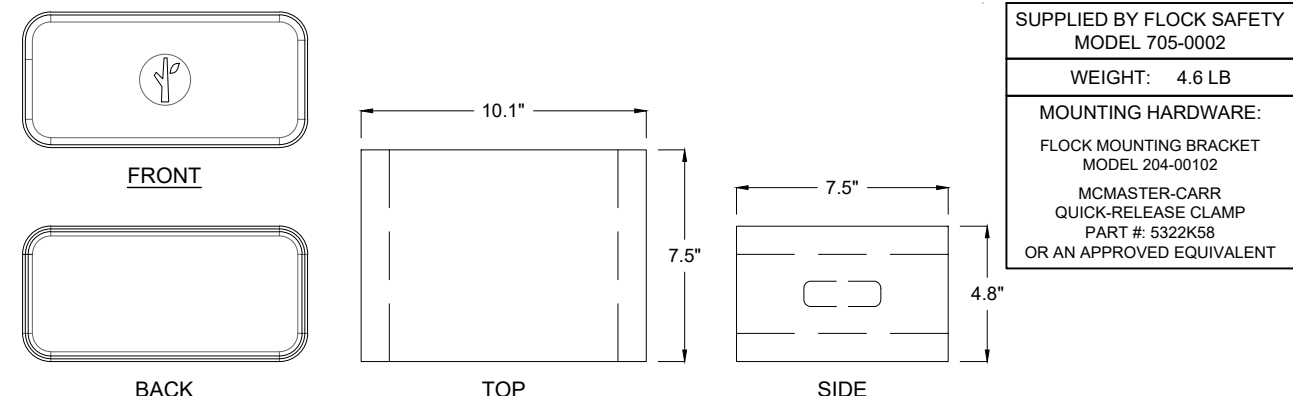
FLOCK SAFETY EQUIPMENT
INSTALLATION

TYPICAL DETAILS	
SHEET: SPEC.01	REV: 0

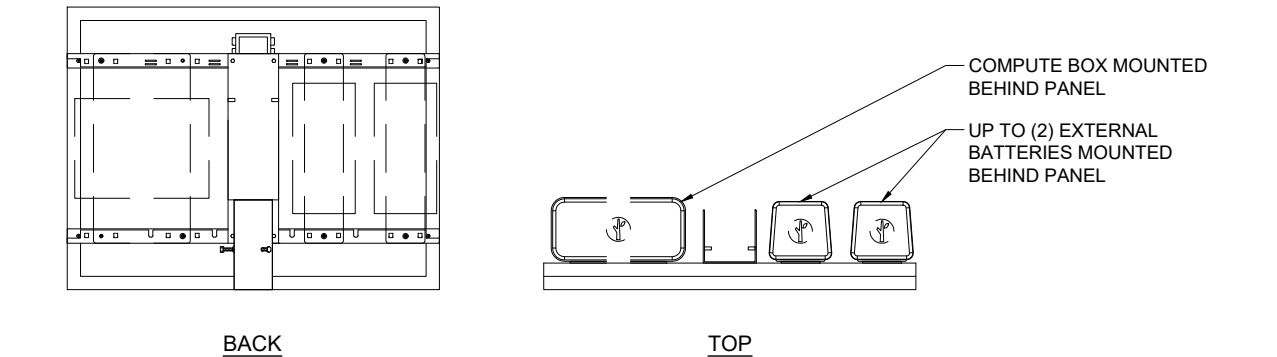
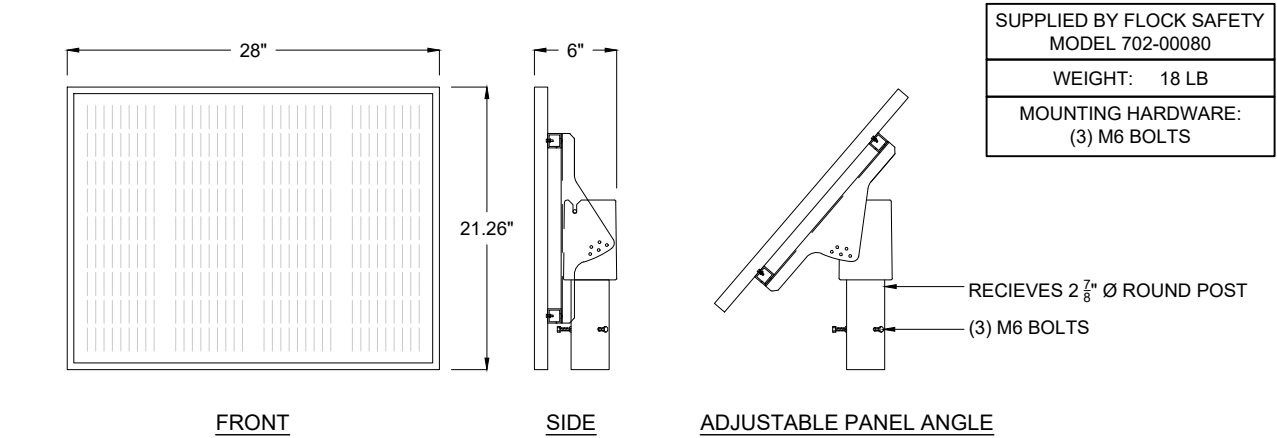
1 POLE ELEVATION DETAIL
SCALE: 1:20



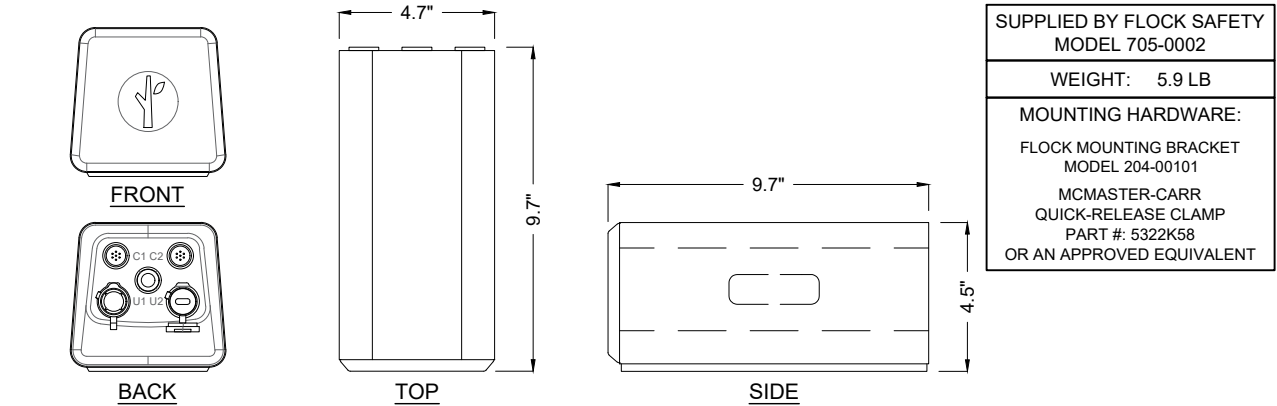
1 FLOCK SAFETY CAMERA
SCALE: N/A



4 FLOCK COMPUTE BOX
SCALE: N/A



2 65 WATT SOLAR PANEL AND MOUNT ASSEMBLY (TOP MOUNTED)
SCALE: N/A



3 FLOCK EXTERNAL BATTERY
SCALE: N/A

TYPICAL DETAIL

FLOCK SAFETY CAMERA ON
12'-0" FLOCK POLE

flock safety

1170 HOWELL MILL ROAD SUITE 210
ATLANTA, GA 30318

REV	DATE	BY	DESCRIPTION
-	-	-	-
-	-	-	-
-	-	-	-
-	-	-	-
0	07/21/2025	JMW	TYP. DETAIL

FLOCK SAFETY EQUIPMENT
INSTALLATION

TYPICAL DETAILS	
SHEET: SPEC.02	REV: 0

ITEM NO.	DESCRIPTION	QTY.
1	2.5" SCH 40 2.875OD 74.000L	1
2	2.5 SCH 40 2.875OD 118.000L	1
3	BUT TORX 0.250-20 TAMPER-RESISTANT	6
4	INSERT SLEEVE STYLE 7 TAPPED	1
5	ORING	1
6	WASHER	6
7	CONCRETE FOOTING	1
8	HBOLT 0.2500-20	1

PROVELI STYLE 7 COUPLER ASSEMBLY

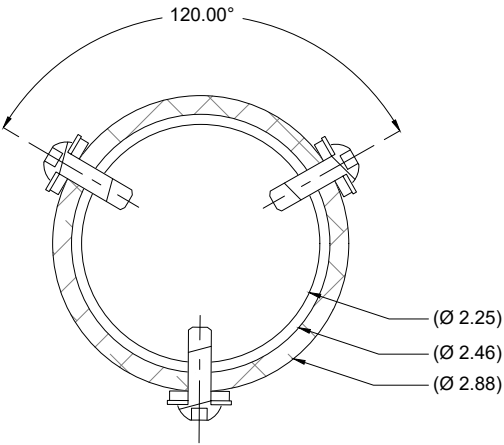
PART #: 1020-01

MATERIAL: SCHED 40 6061 ALUMINUM

WEIGHT: 172.42 LBS

DATE: 09/27/2023

DO NOT SCALE DRAWINGS (NTS)



SECTION C-C

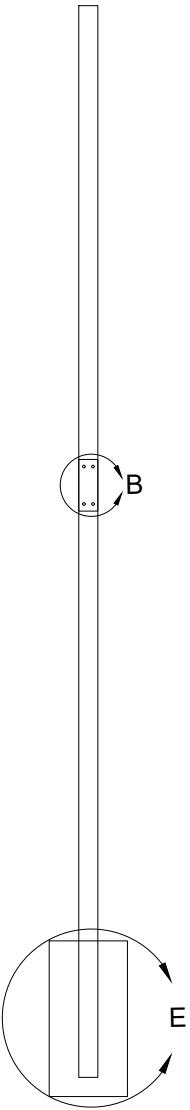
TYPICAL DETAIL

FLOCK SAFETY CAMERA ON
12'-0" FLOCK POLE

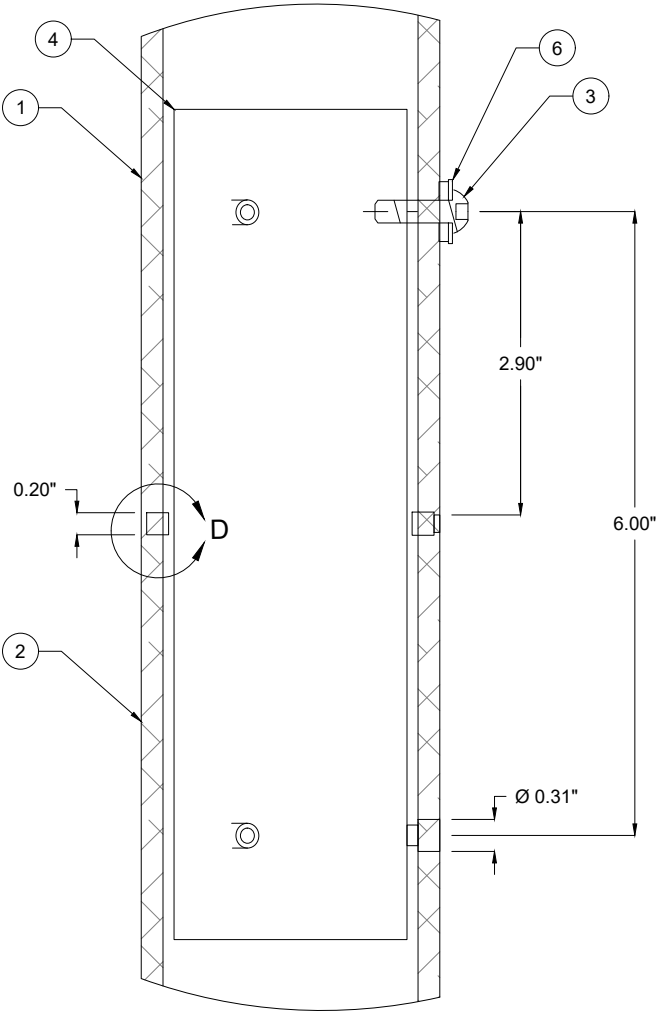
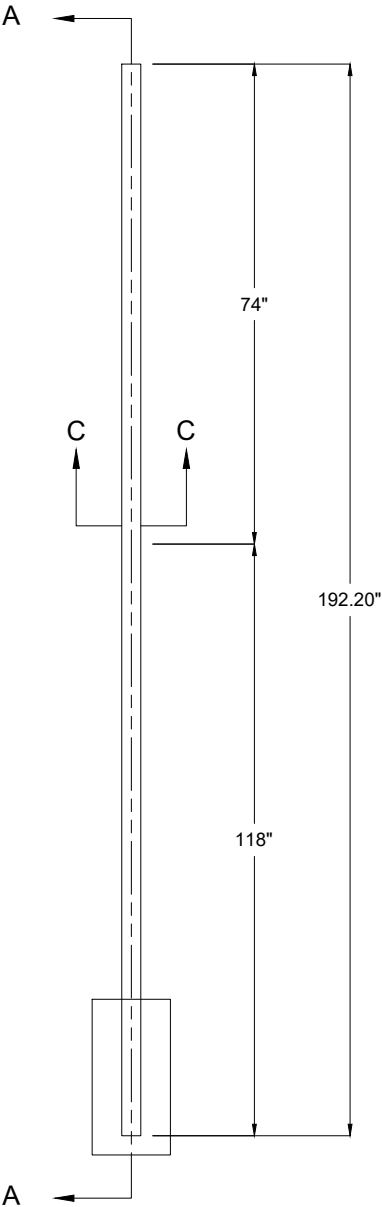
flock safety

1170 HOWELL MILL ROAD SUITE 210
ATLANTA, GA 30318

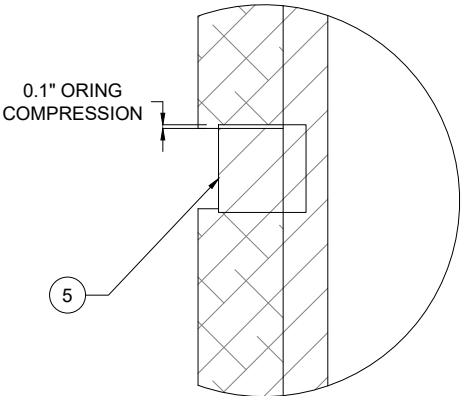
REV	DATE	BY	DESCRIPTION
-	-	-	-
-	-	-	-
-	-	-	-
-	-	-	-
0	07/21/2025	JMW	TYP. DETAIL



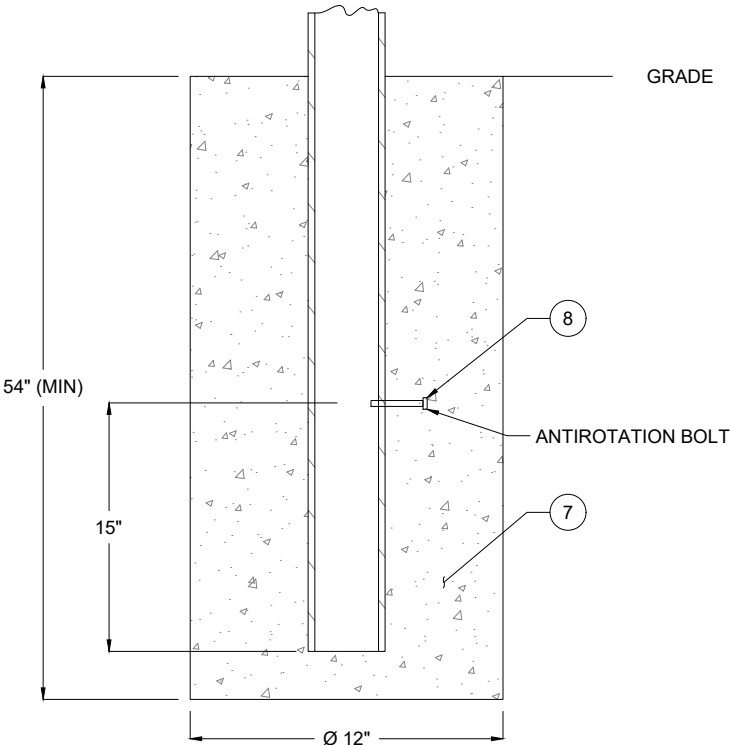
SECTION A-A



DETAIL B



DETAIL D



DETAIL E

NOTE: CONCRETE SHALL HAVE A
MINMUM COMPRESSIVE STRENGTH
OF 3,000 PSI.