

ENFORCEMENT SAFETY CAMERA STRUCTURAL SUPPORT FLORIDA



**KEVER | MCKEE
ENGINEERING**

1624 Metropolitan Blvd., Ste. A
Tallahassee, Florida 32308
Office: 850.727.5367
Authorization No. 31293

GENERAL NOTES

1. UNLESS OTHERWISE SPECIFIED, ALL WORK AND MATERIALS SHALL CONFORM TO "AASHTO LRFD SPECIFICATION FOR STRUCTURAL SUPPORTS FOR HIGHWAY SIGNS, LUMINARIES AND TRAFFIC SIGNALS", 1ST EDITION.
2. DO NOT SCALE DRAWINGS. USE DIMENSIONS AND DETAILS.
3. THE GENERAL CONTRACTOR SHALL VERIFY THE DIMENSIONS AND SITE CONDITIONS BEFORE STARTING WORK. THE ARCHITECT SHALL BE NOTIFIED OF ANY DISCREPANCIES PRIOR TO PROCEEDING WITH THE WORK. FOR DIMENSIONS NOT SHOWN, SEE ARCHITECTURAL DRAWINGS.
4. THE CONTRACTOR SHALL NOTIFY THE ARCHITECT IN WRITING OF CONDITIONS ENCOUNTERED IN THE FIELD CONTRADICTORY TO THOSE SHOWN ON THESE STRUCTURAL CONTRACT DOCUMENTS.
5. THE GENERAL CONTRACTOR IS SOLELY RESPONSIBLE FOR JOB SITE SAFETY AND FOR CONFORMANCE WITH THE HEALTH AND SAFETY PROVISIONS REQUIRED BY ANY REGULATORY AGENCIES. THE STRUCTURAL ENGINEER OF RECORD HAS NO AUTHORITY TO EXERCISE ANY CONTROL OVER ANY CONSTRUCTION CONTRACTOR, OR THEIR EMPLOYEES WITH THEIR WORK OR ANY HEALTH OR SAFETY PRECAUTIONS.

DESIGN LOADS

1. WIND LOAD
 - A. ULTIMATE DESIGN WIND SPEED = 110 MPH
 - B. IMPORTANCE FACTOR: =1.0
 - C. WIND EXPOSURE CATEGORY = C
 - D. ENCLOSURE CLASSIFICATION = OPEN
 - E. INTERNAL PRESSURE, GC_{pi} = OPEN

MATERIALS AND CONSTRUCTION

1. ALUMINUM
 - A. SEE S101 FOR PART NUMBERS. ENGINEER TO BE NOTIFIED IF PARTS OTHER THAN THOSE SPECIFIED ARE USED.
 - B. POLES TO BE ALLOY 6061-T6, NON-WELDED, 4" NPT AT BOTTOM WITH MINIMUM F_y=35 KSI
 - C. FRANGIBLE BASE TO BE 319 ALLOY, F_y = 14 KSI, THREADED TO RECEIVE 4" NPT. BASE TO WITHSTAND MINIMUM MOMENT OF 10,750 LB-FT AT BOTTOM OF BASE.

MATERIALS AND CONSTRUCTION CONT'D

2. CONCRETE
 - A. ALL CONCRETE WORK SHALL CONFORM TO AMERICAN CONCRETE INSTITUTE'S "BUILDING CODE REQUIREMENTS FOR STRUCTURAL CONCRETE" (ACI 318-19). CONCRETE SHALL BE CLASS II AND SHALL HAVE A MINIMUM COMPRESSIVE STRENGTH (f'_c) OF 4,000 PSI.
 - B. CHAMFER ALL CONCRETE EXPOSED EDGES UNLESS INDICATED OTHERWISE.
 - C. ALL DRILLING AND EPOXYING OF ANCHOR BOLTS SHALL BE DONE WITH THE HILTI HIT HY 150 ADHESIVE ANCHORING SYSTEM, OR APPROVED EQUIVALENT.
3. REINFORCING STEEL
 - A. ALL REINFORCING STEEL SHALL BE INTERMEDIATE GRADE BILLET STEEL CONFORMING TO ASTM A615, GRADE 60, WITH A MINIMUM SPLICE LENGTH OF 36 BAR DIAMETERS UNLESS INDICATED OTHERWISE.

SOIL

1. CALCULATIONS ARE BASED ON THE FOLLOWING SUBGRADE CONDITIONS:
 - A. MEDIUM DENSE SANDY SOIL
 - B. SOIL UNIT WEIGHT OF 100 PCF.
 - C. SOIL FRICTION ANGLE OF 30°.

COMPONENT SPECIFICATIONS		
SYSTEM TYPE	PART	MAXIMUM WEIGHT
D-ARMOR	SYSTEM ENCLOSURE	50 LB
D-ARMOR	FLASH ENCLOSURE	40 LB
D-ARMOR	RADAR	2 LB

STRUCTURAL SHEETS	
SHEET NUMBER	SHEET NAME
S001	Structural Notes
S101	D-Armor System Cabinet
S102	Pole Isometric

PROJECT

**Enforcement Safety
Camera**

ISSUE DATE

04/14/2026

REVISION SCHEDULE

NO.	DATE

PROJECT NUMBER

22458

PROJECT PHASE

100%
CONSTRUCTION
DOCUMENTS

DRAWN	DESIGNED
-------	----------

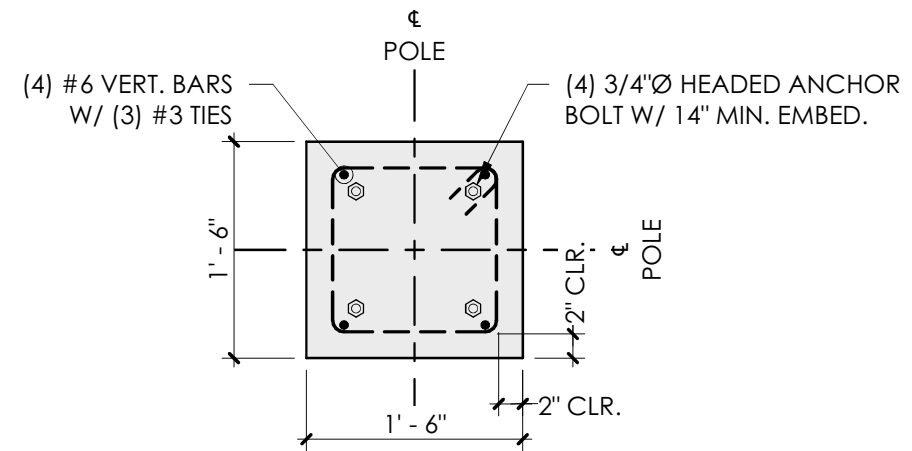
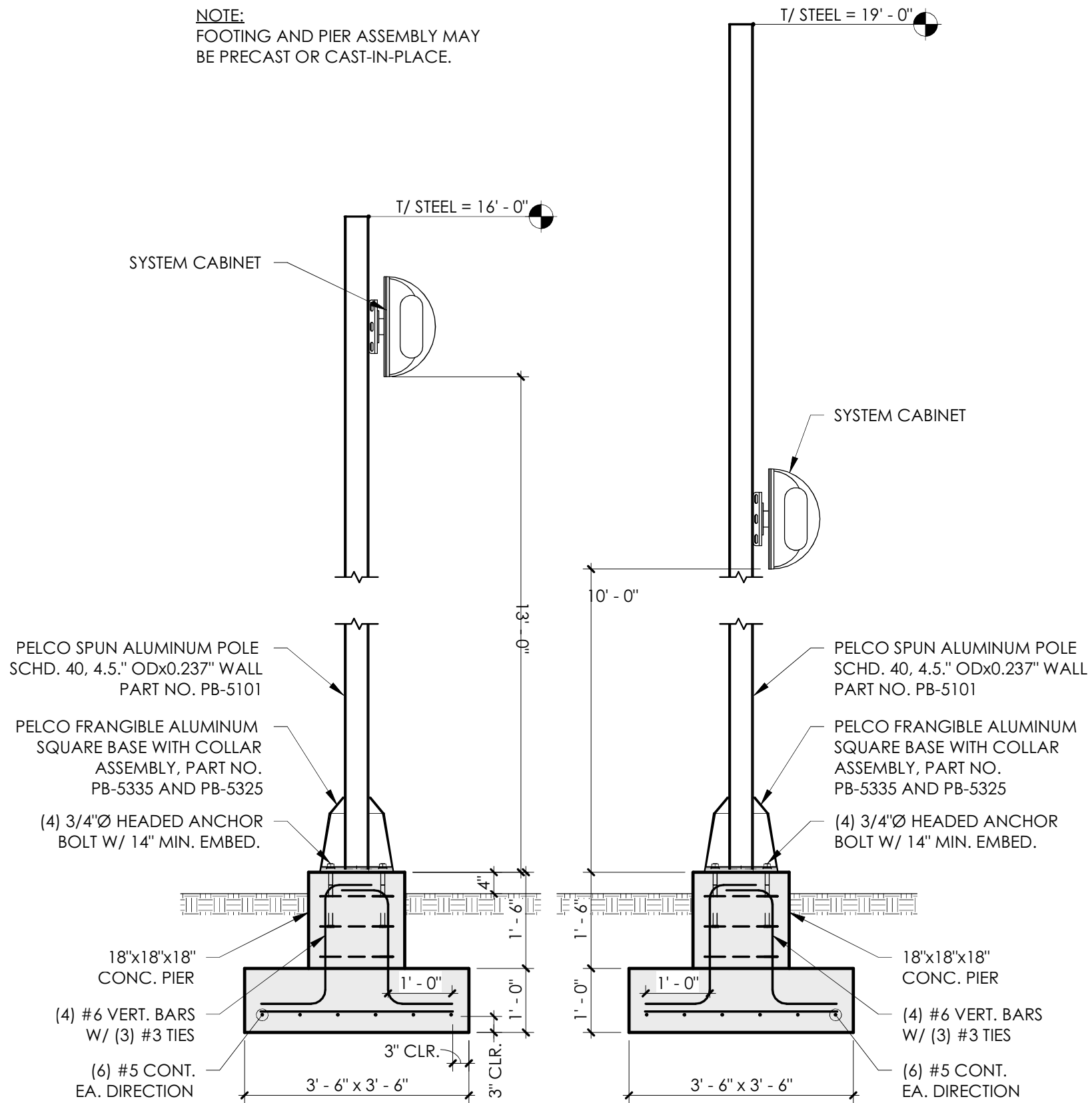
L. Malta	L. Malta
----------	----------

SHEET TITLE

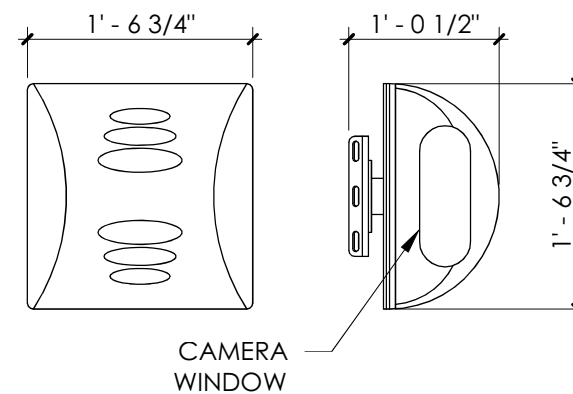
Structural Notes

S001

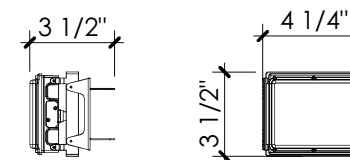
NOTE:
FOOTING AND PIER ASSEMBLY MAY
BE PRECAST OR CAST-IN-PLACE.



2 Pier Section
3/4" = 1'-0"



3 System Cabinet
3/4" = 1'-0"



4 Radar
1 1/2" = 1'-0"



KEVER | MCKEE
ENGINEERING

1624 Metropolitan Blvd., Ste. A
Tallahassee, Florida 32308
Office: 850.727.5367
Authorization No. 31293

PROJECT

Enforcement Safety
Camera

ISSUE DATE

04/14/2026

REVISION SCHEDULE

NO.	DATE

PROJECT NUMBER

22458

PROJECT PHASE

100%
CONSTRUCTION
DOCUMENTS

DRAWN	DESIGNED
L. Malta	L. Malta

L. Malta

SHEET TITLE

D-Armor System
Cabinet

S101



KEVER | MCKEE
ENGINEERING

1624 Metropolitan Blvd., Ste. A
Tallahassee, Florida 32308
Office: 850.727.5367
Authorization No. 31293

PROJECT

**Enforcement Safety
Camera**

ISSUE DATE

04/14/2026

REVISION SCHEDULE

NO.	DATE

PROJECT NUMBER

22458

PROJECT PHASE

100%
CONSTRUCTION
DOCUMENTS

DRAWN	DESIGNED
L. Malta	L. Malta

SHEET TITLE

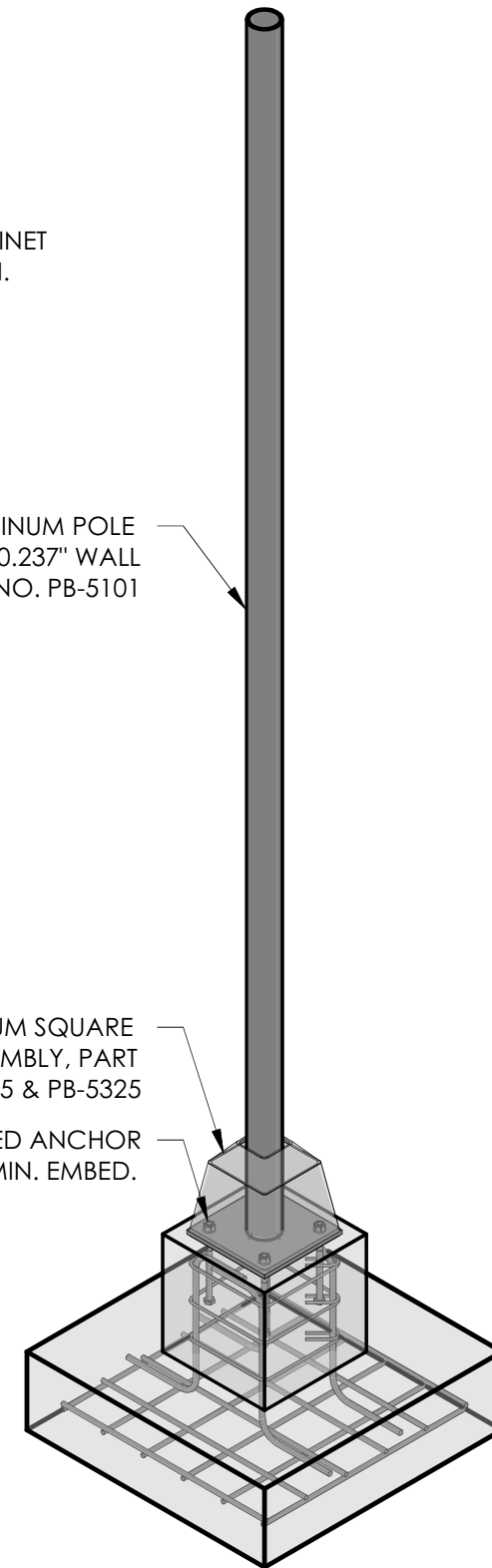
Pole Isometric

NOTE:
SYSTEM CABINET
NOT SHOWN.

PELCO SPUN ALUMINUM POLE
SCHD 40, 40.5" ODx0.237" WALL
PART NO. PB-5101

PELCO FRANGIBLE ALUMINUM SQUARE
BASE WITH COLLAR ASSEMBLY, PART
NO. PB-5335 & PB-5325

(4) 3/4"Ø HEADED ANCHOR
BOLT W/ 14" MIN. EMBED.



1 Pole Isometric
S102

S102