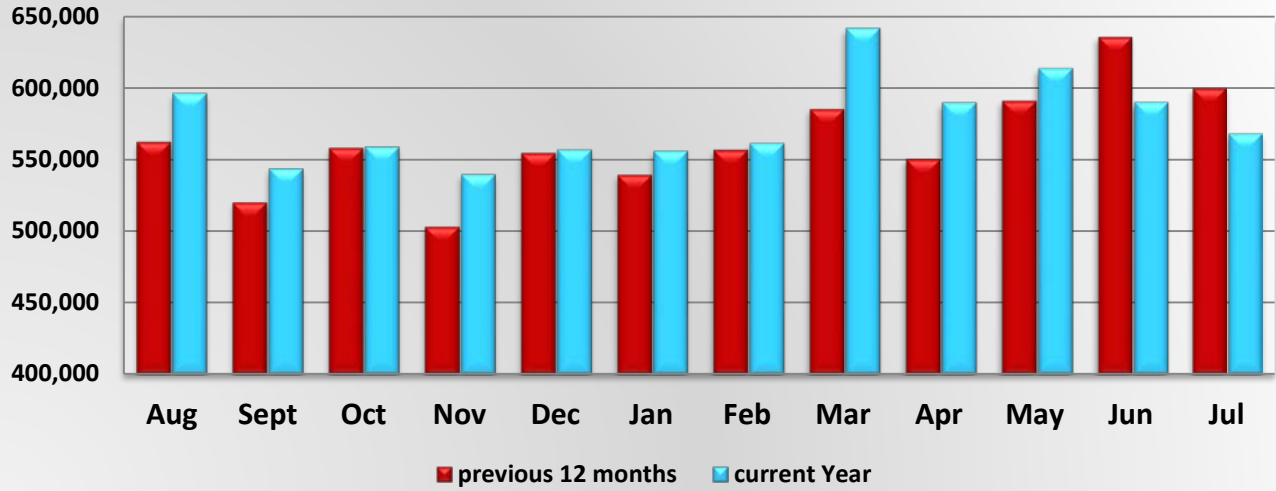
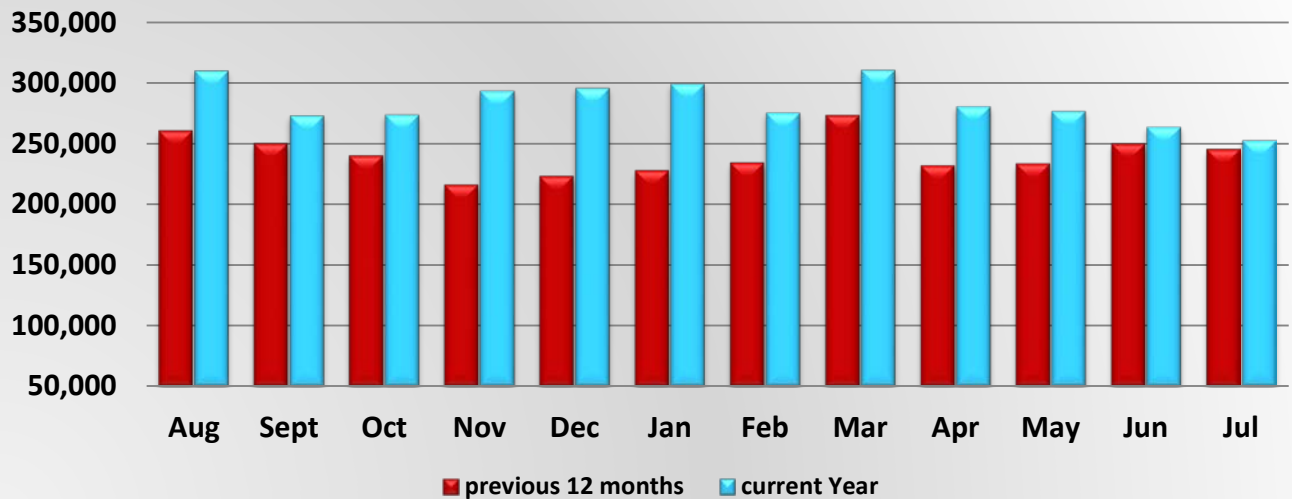


MCSAW PrePass Bypass Activity



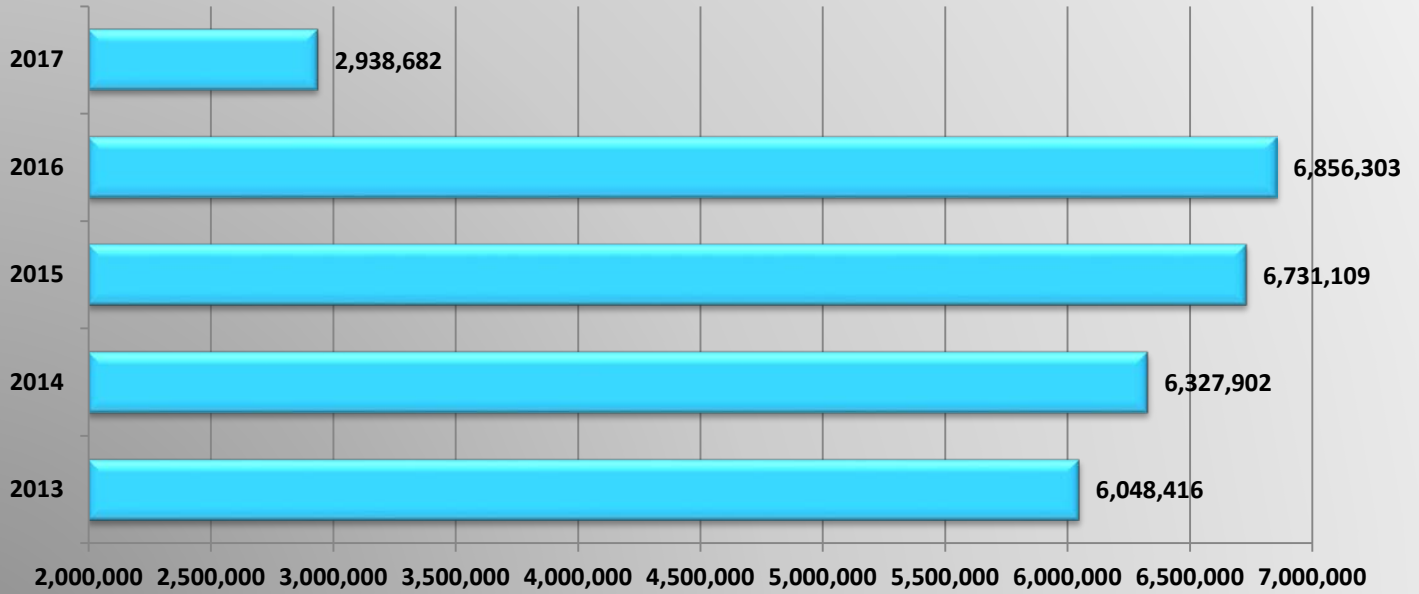
MCSAW PrePass Bypass Activity												
	Aug	Sept	Oct	Nov	Dec	Jan	Feb	Mar	Apr	May	Jun	Jul
Aug 15 - Jul 16	562,631	520,385	558,467	503,725	554,896	539,473	556,983	585,466	550,519	591,268	636,085	600,055
Aug 16 - Jul 17	596,519	543,856	559,086	539,859	557,134	556,237	561,616	642,056	590,075	613,960	590,136	568,190

MCSAW PrePass Pull-in Activity

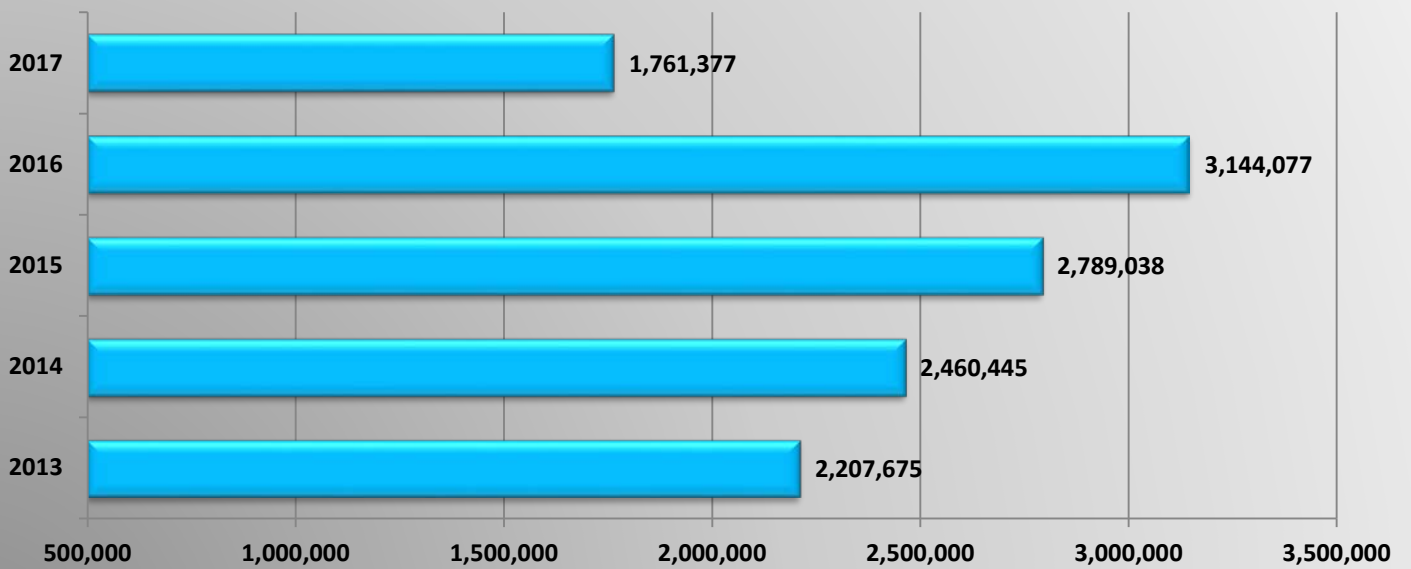


MCSAW PrePass Pull-in Activity												
	Aug	Sept	Oct	Nov	Dec	Jan	Feb	Mar	Apr	May	Jun	Jul
Aug 15 - Jul 16	260,772	250,196	240,074	216,057	223,356	228,085	234,511	273,458	231,893	233,674	250,017	245,420
Aug 16 - Jul 17	310,226	273,274	273,916	293,654	295,949	299,249	275,464	310,811	280,872	276,799	263,828	252,803

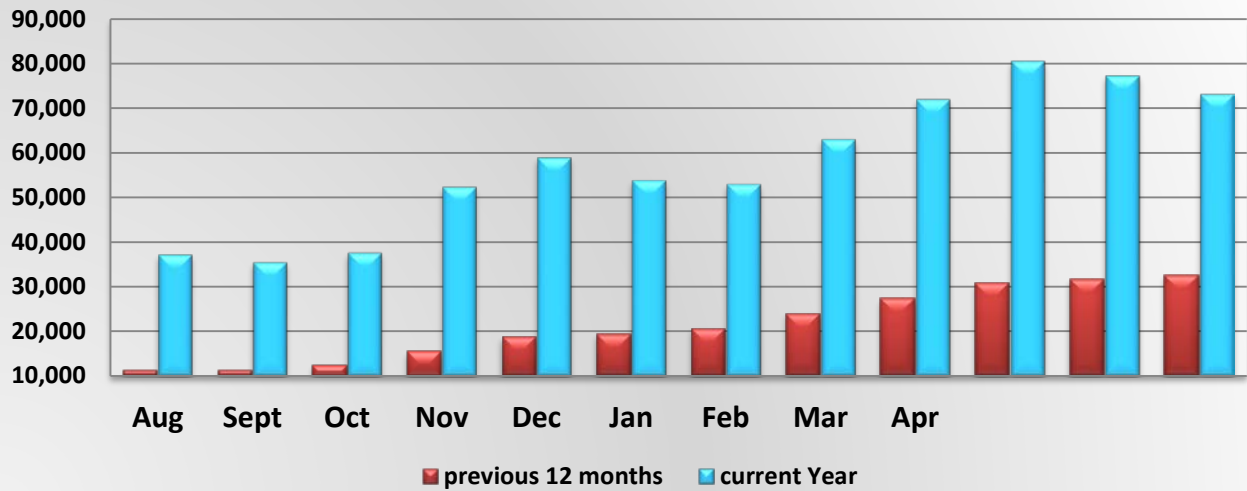
MCSAW Annual Number of Prepass Bypasses



MCSAW Annual Number of Prepass Pull-ins



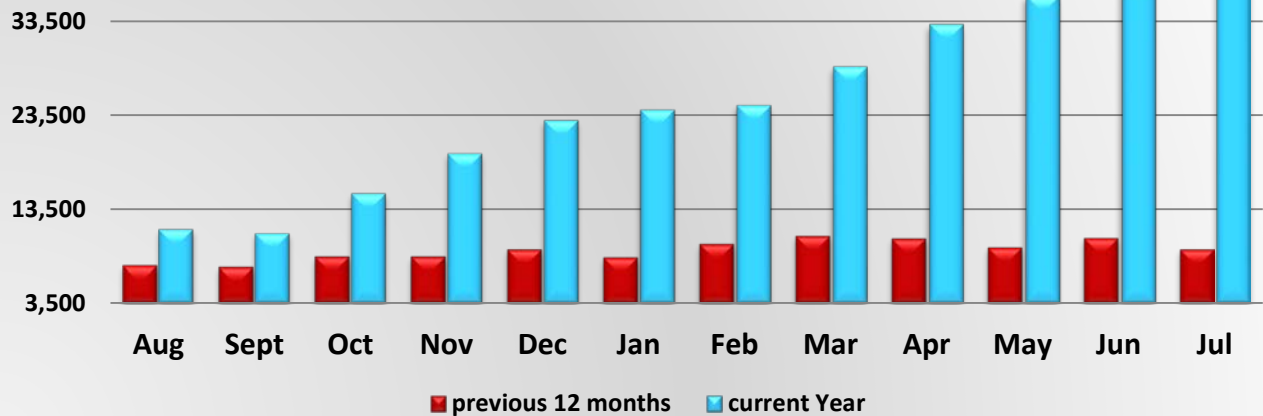
MCSAW Drivewyze Bypass Activity



MCSAW Drivewyze Bypass Activity

	Aug	Sept	Oct	Nov	Dec	Jan	Feb	Mar	Apr	May	Jun	Jul
Aug 15 - Jul 16	11,137	11,239	12,470	15,378	18,906	19,402	20,721	24,112	27,375	30,952	31,717	32,633
Aug 16 - Jul 17	37,249	35,552	37,642	52,276	58,931	53,847	52,933	63,002	71,957	80,565	77,250	73,135

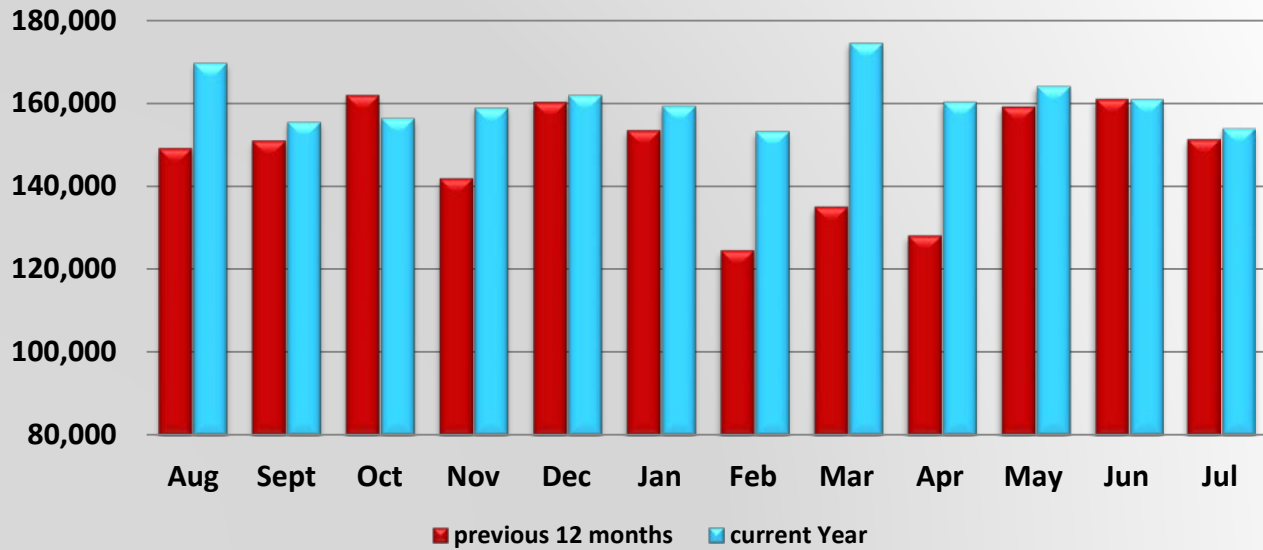
MCSAW Drivewyze Pull-in Activity



MCSAW PrePass Pull-in Activity

	Aug	Sept	Oct	Nov	Dec	Jan	Feb	Mar	Apr	May	Jun	Jul
Aug 15 - Jul 16	7,534	7,343	8,446	8,453	9,196	8,363	9,770	10,646	10,358	9,408	10,401	9,196
Aug 16 - Jul 17	11,421	10,954	15,222	19,455	22,957	24,073	24,552	28,651	33,153	36,191	37,092	40,210

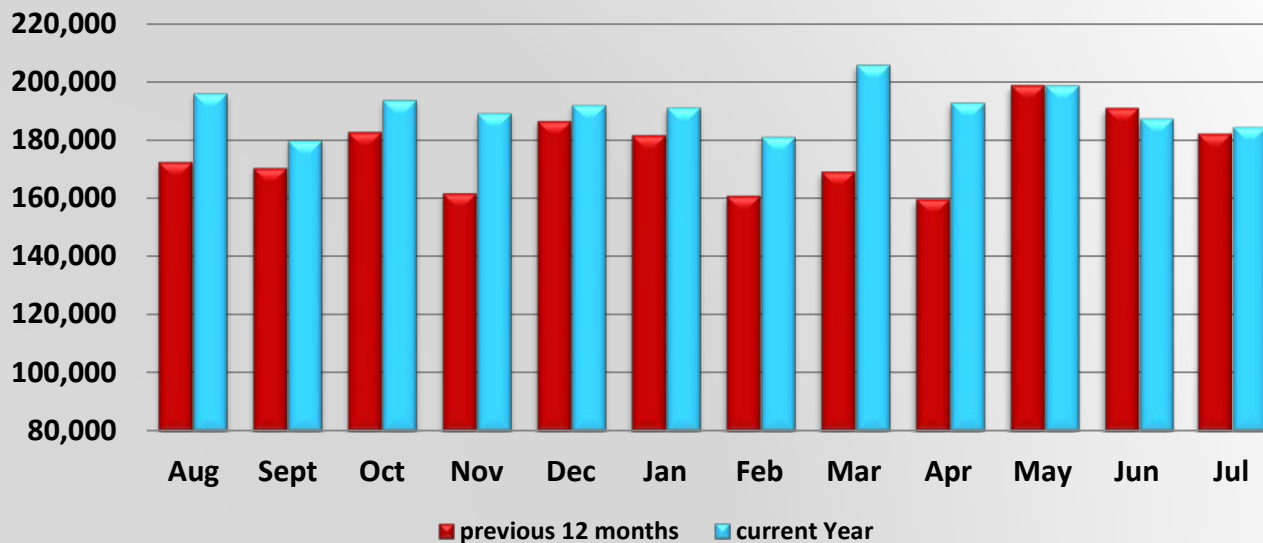
AgPass Bypass Activity at DACS Agricultural Interdiction Stations



DACS AgPass Bypass Activity

	Aug	Sept	Oct	Nov	Dec	Jan	Feb	Mar	Apr	May	Jun	Jul
Aug 15 - Jul 16	149,139	151,031	161,944	141,902	160,235	153,450	124,598	135,104	128,123	159,198	161,024	151,308
Aug 16 - Jul 17	169,694	155,517	156,399	158,874	161,948	159,334	153,265	174,590	160,385	164,133	161,001	153,933

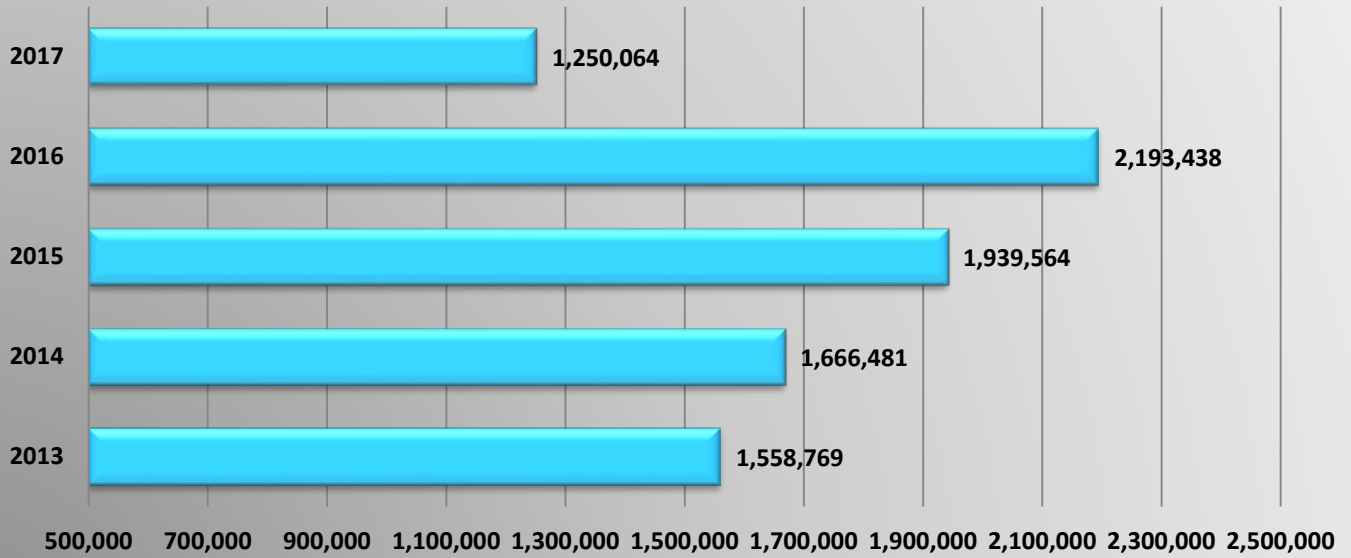
AgPass Pullin Activity at DACS Agricultural Interdiction Stations



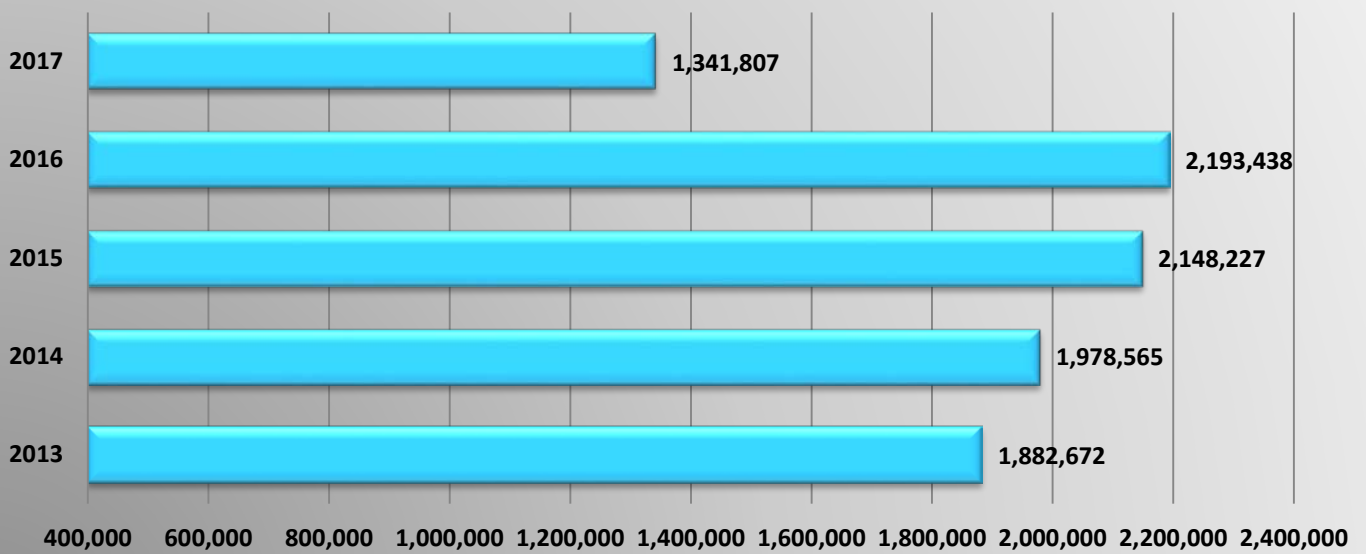
DACS AgPass Pull-in Activity

	Aug	Sept	Oct	Nov	Dec	Jan	Feb	Mar	Apr	May	Jun	Jul
Aug 15 - Jul 16	172,294	170,218	182,607	161,679	186,355	181,477	160,753	169,033	159,665	198,675	190,869	182,082
Aug 16 - Jul 17	196,008	179,801	193,740	189,254	192,081	191,214	181,158	205,815	192,810	198,757	187,445	184,608

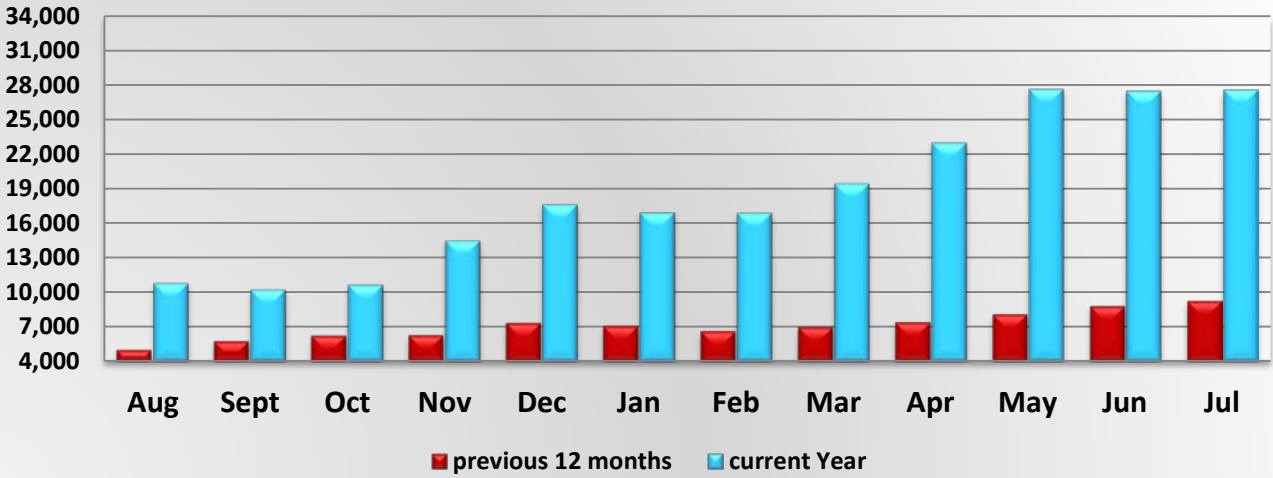
Annual Number of AgPass Bypasses



Annual Number of AgPass Pullins



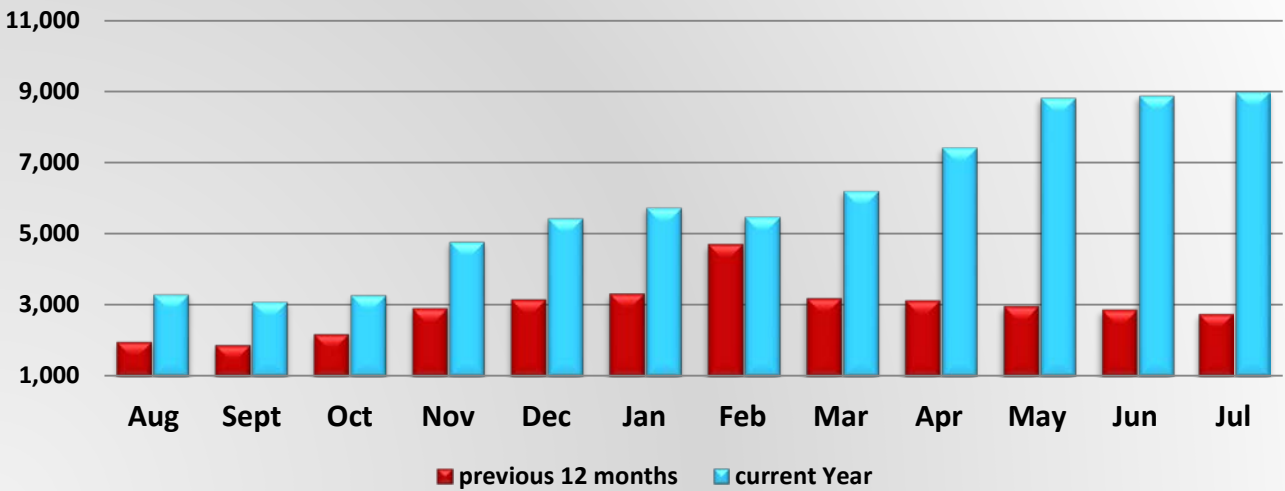
DACS Driveway Bypass Activity



DACS Driveway Bypass Activity

	Aug	Sept	Oct	Nov	Dec	Jan	Feb	Mar	Apr	May	Jun	Jul
Aug 15 - Jul 16	5,008	5,754	6,227	6,269	7,336	7,062	6,621	6,985	7,392	8,075	8,767	9,231
Aug 16 - Jul 17	10,822	10,273	10,696	14,530	17,639	16,955	16,942	19,467	22,987	27,646	27,482	27,594

DACS Driveway Pull-in Activity

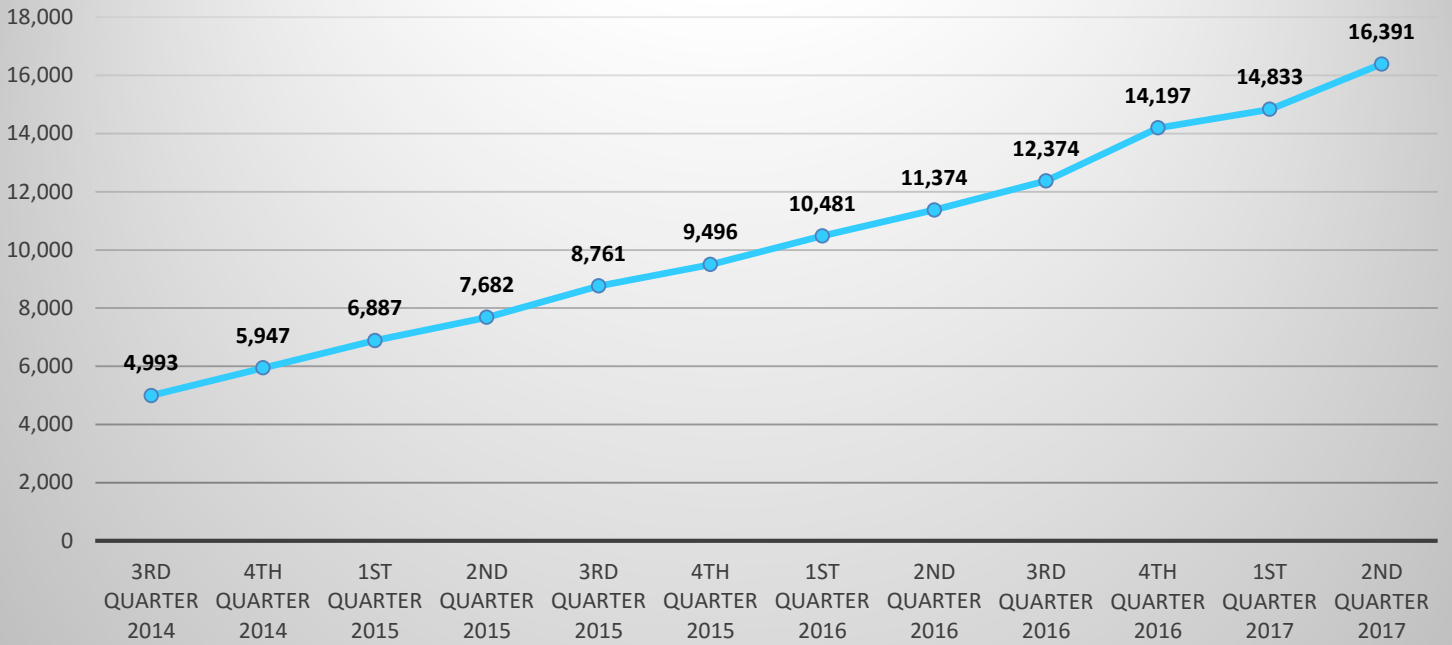


DACS Driveway Pull-in Activity

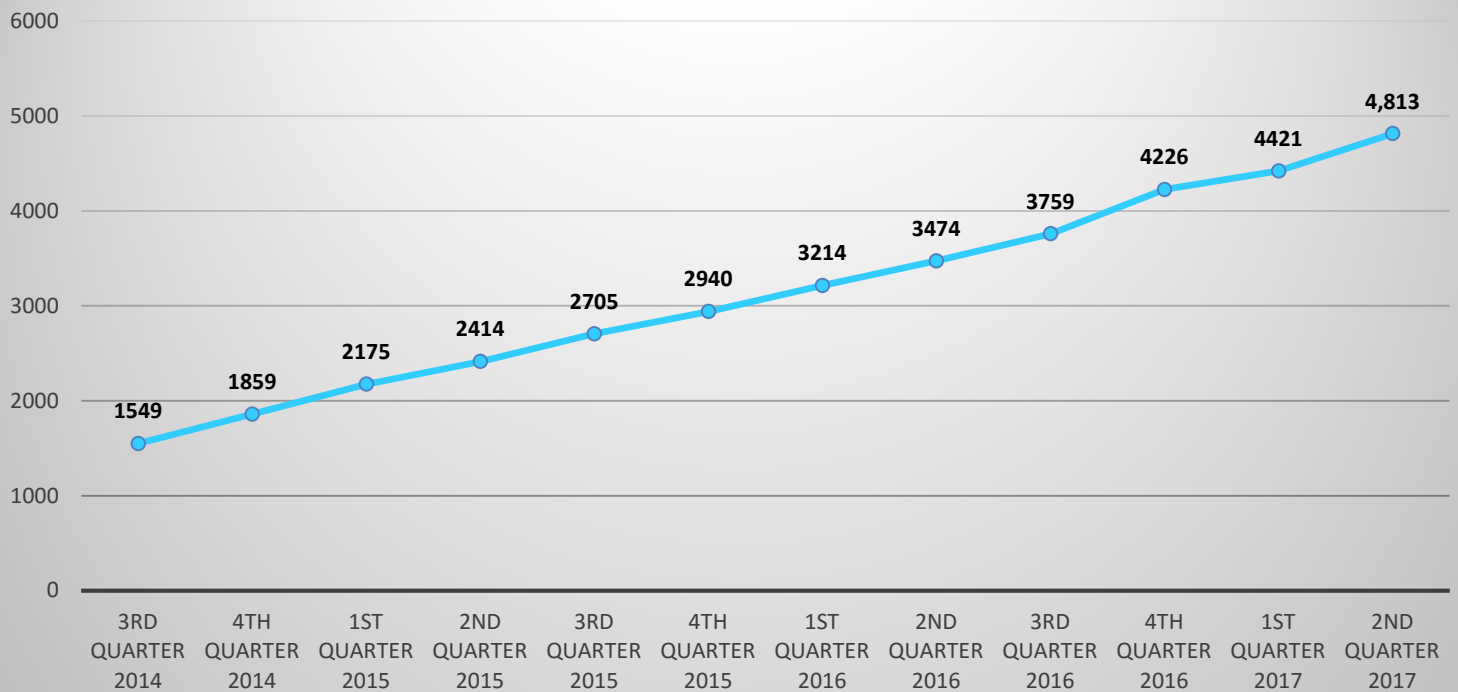
	Aug	Sept	Oct	Nov	Dec	Jan	Feb	Mar	Apr	May	Jun	Jul
Aug 15 - Jul 16	1,967	1,881	2,189	2,899	3,145	3,309	4,684	3,179	3,114	2,965	2,865	2,752
Aug 16 - Jul 17	3,301	3,102	3,287	4,784	5,441	5,736	5,490	6,213	7,422	8,811	8,881	8,989

Permit Application System Stats

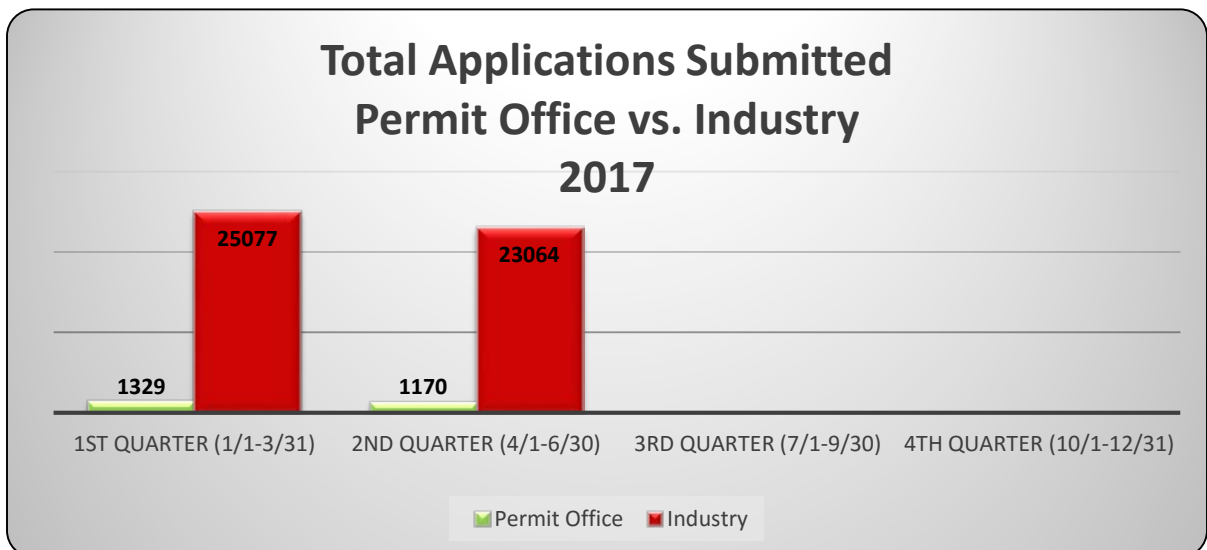
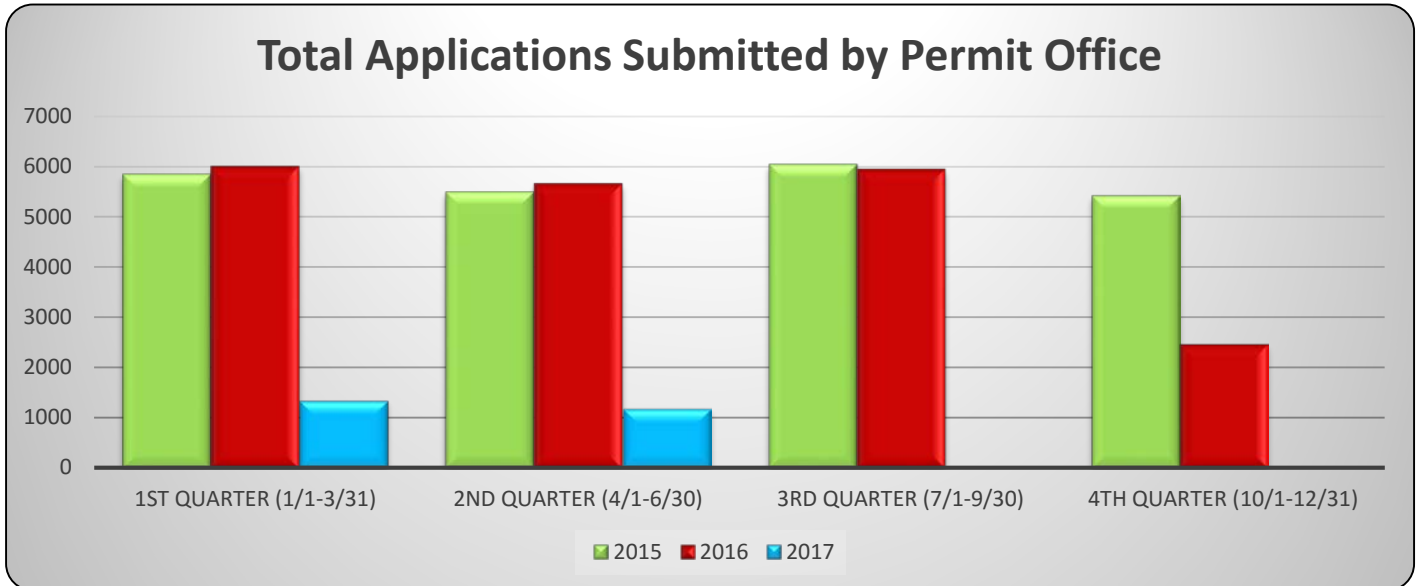
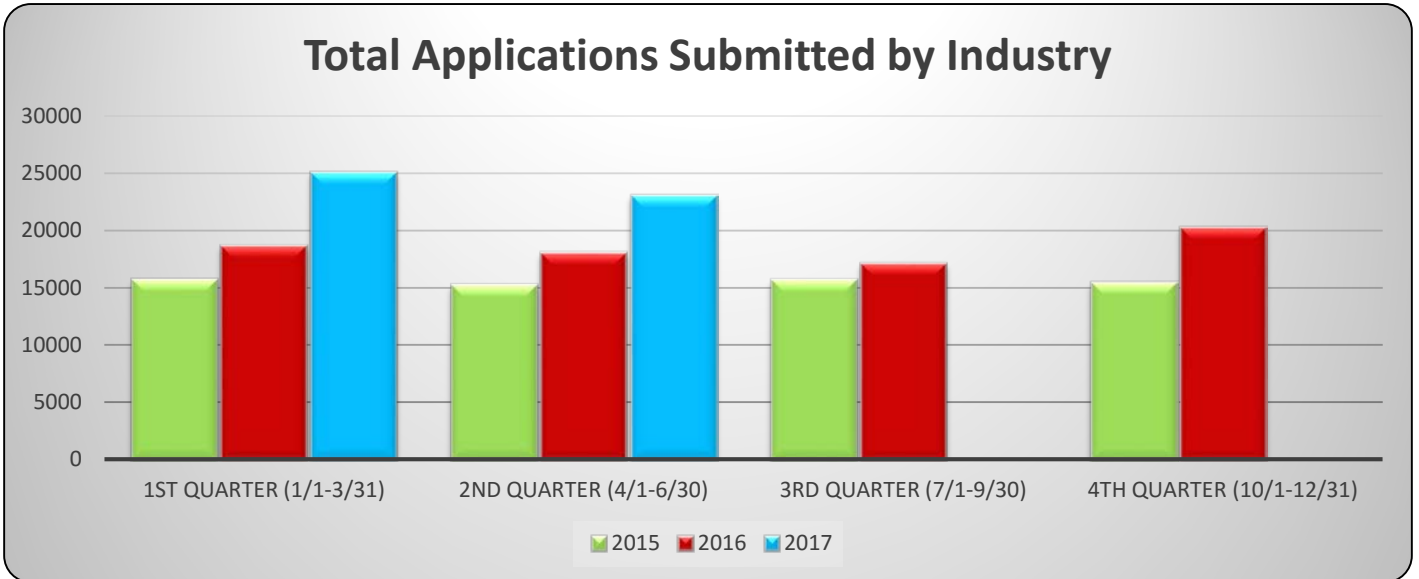
Total Number of Registered ISA Users



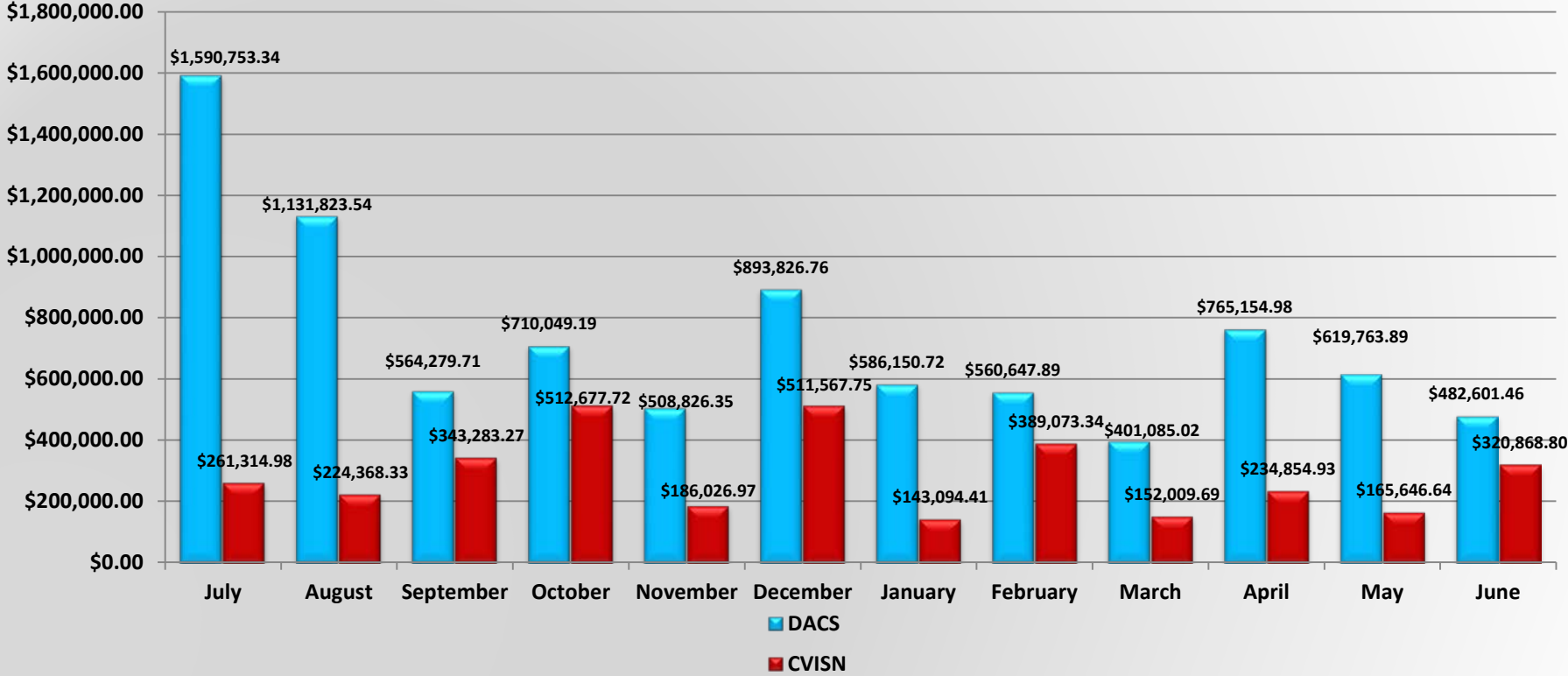
Total Number of Account Profiles



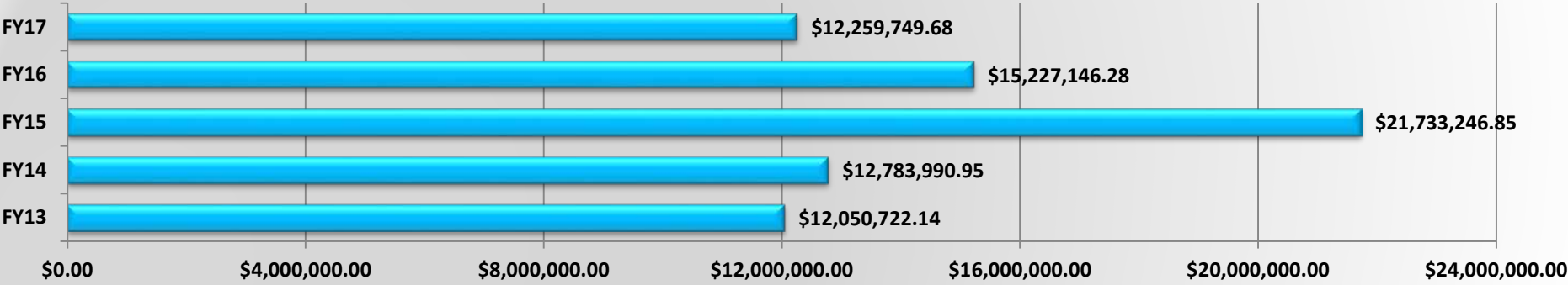
Permit Application System Stats



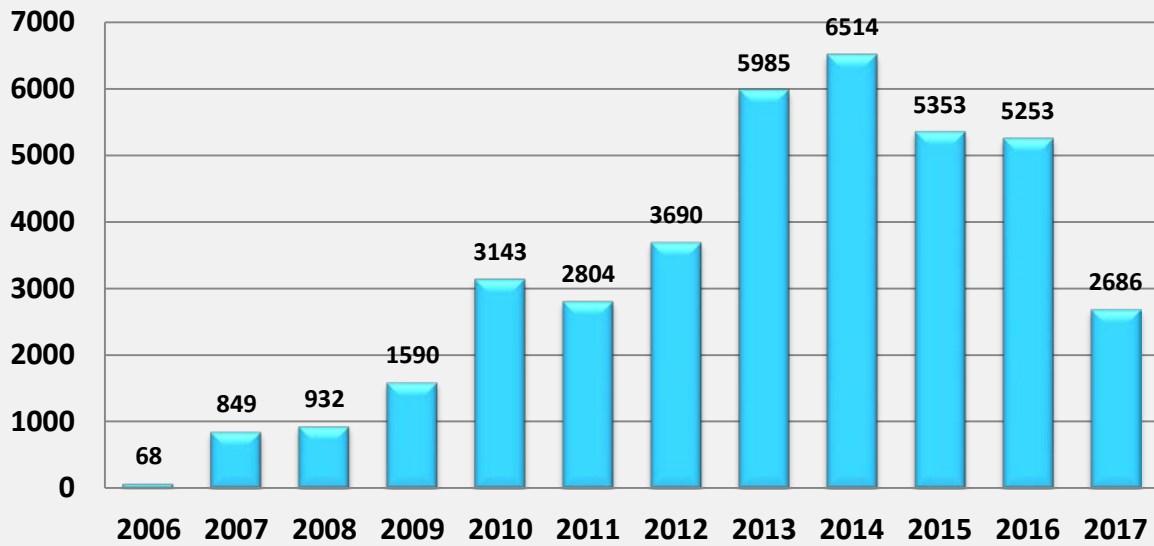
DACS/CVISN Recovery 2016-2017



DACS/CVISN Recovery Fiscal Year Comparison

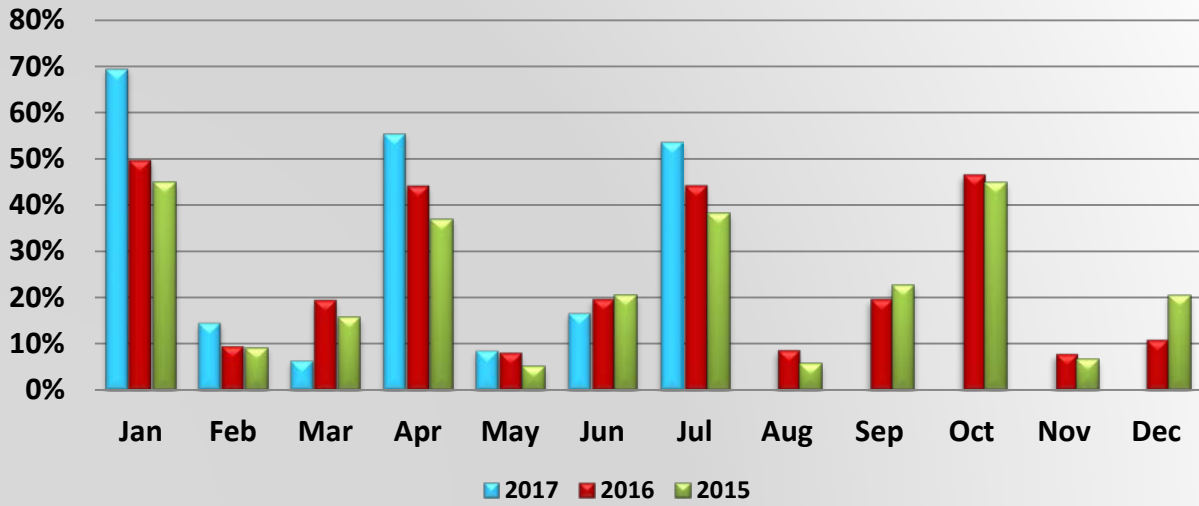


Number of New CVISN Accounts at DHSMV



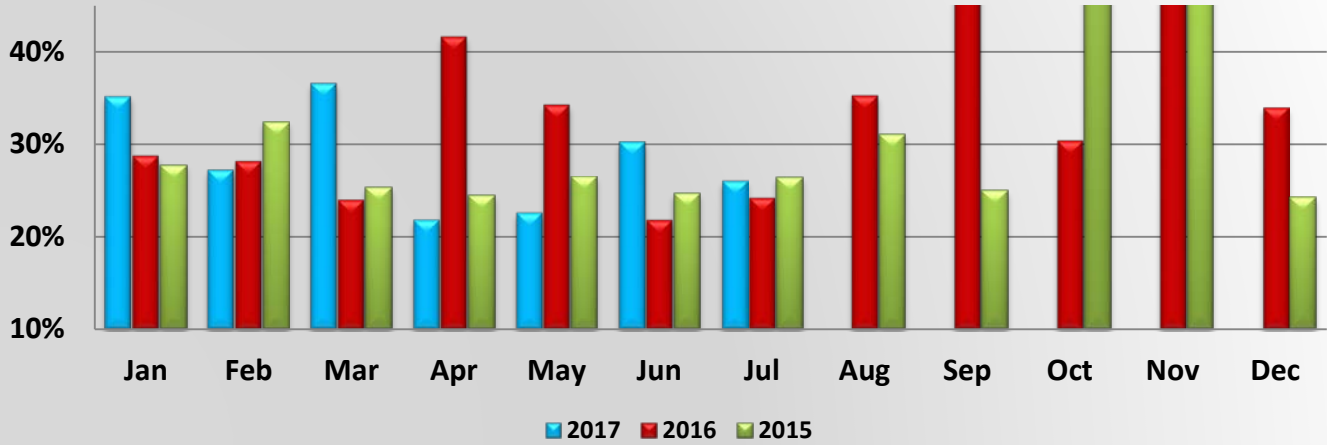
Total Number of New CVISN Accounts													
	Jan	Feb	Mar	Apr	May	Jun	Jul	Aug	Sep	Oct	Nov	Dec	Yearly Total
2006	0	0	0	0	0	0	0	0	17	35	11	5	68
2007	12	10	11	251	224	26	34	30	63	45	56	87	849
2008	39	266	30	37	25	35	35	52	112	165	72	64	932
2009	69	75	65	88	81	426	149	119	129	125	95	169	1590
2010	77	153	273	382	202	205	234	256	304	347	346	364	3143
2011	295	278	388	177	114	170	194	208	309	233	204	234	2804
2012	356	313	295	256	345	281	300	279	238	544	235	248	3690
2013	469	374	406	402	383	390	452	376	410	683	753	887	5985
2014	779	632	577	415	373	612	509	420	478	395	661	633	6484
2015	489	480	631	403	398	519	425	430	249	389	446	494	5353
2016	572	517	549	386	345	460	384	410	394	358	354	524	5253
2017	435	463	380	332	412	417	247						2686

Percent of Total IFTA Tax Returns



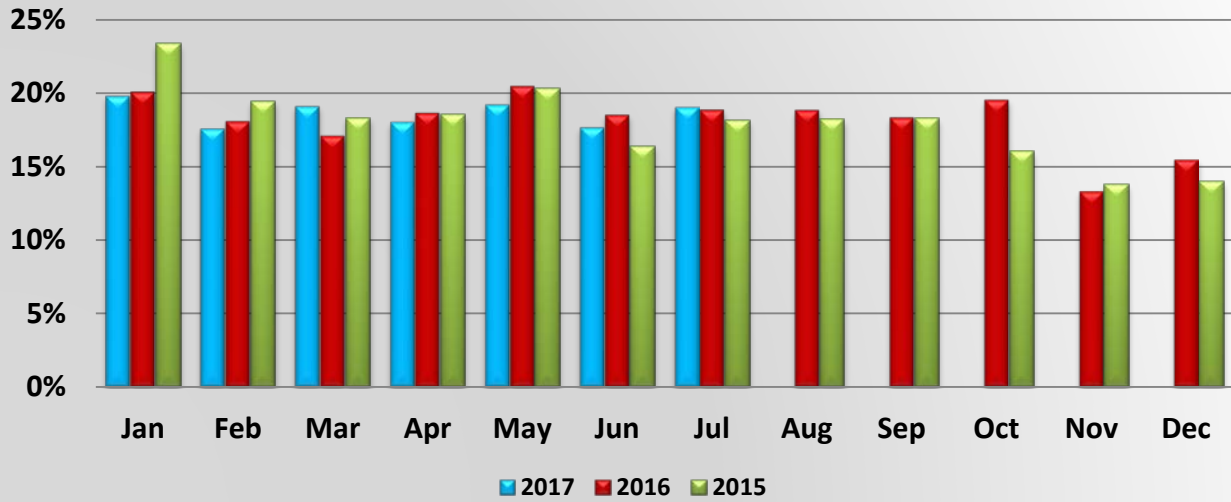
	Jan	Feb	Mar	Apr	May	Jun	Jul	Aug	Sep	Oct	Nov	Dec
2017	69.464%	14.600%	6.430%	55.490%	8.540%	16.670%	53.660%					
2016	49.699%	9.535%	19.507%	44.150%	8.156%	19.714%	44.271%	8.721%	19.695%	46.621%	7.879%	10.922%
2015	44.850%	9.106%	15.733%	36.9372%	5.093%	20.457%	38.151%	5.664%	22.679%	44.876%	6.581%	20.533%

Percent of Total IFTA Decals Issued



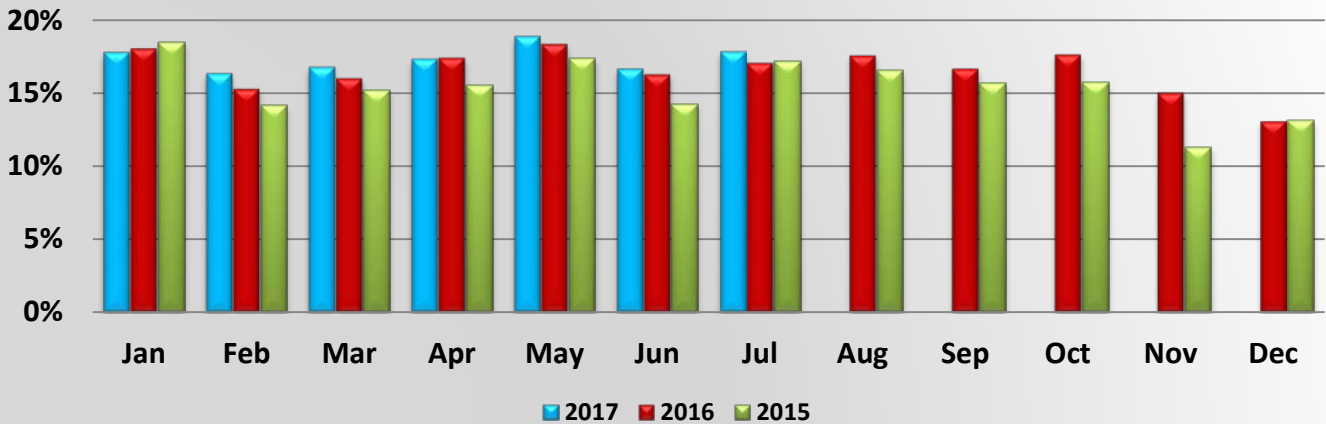
	Jan	Feb	Mar	Apr	May	Jun	Jul	Aug	Sep	Oct	Nov	Dec
2017	35.120%	27.190%	36.560%	21.840%	22.600%	30.250%	26.010%					
2016	28.756%	28.163%	24.066%	41.635%	34.250%	21.875%	24.264%	35.268%	58.556%	30.387%	63.896%	33.963%
2015	27.739%	32.422%	25.325%	24.442%	26.502%	24.711%	26.388%	31.083%	25.000%	78.151%	46.745%	24.248%

Percent of Total IRP Supplements Billed thru the web



	Jan	Feb	Mar	Apr	May	Jun	Jul	Aug	Sep	Oct	Nov	Dec
2017	19.804%	17.590%	19.120%	18.050%	19.220%	17.670%	19.050%					
2016	20.094%	18.086%	17.115%	18.649%	20.494%	18.524%	18.863%	18.859%	18.343%	19.537%	13.338%	15.473%
2015	23.391%	19.471%	18.301%	18.571%	20.362%	16.428%	18.182%	18.202%	18.291%	16.035%	13.784%	13.999%

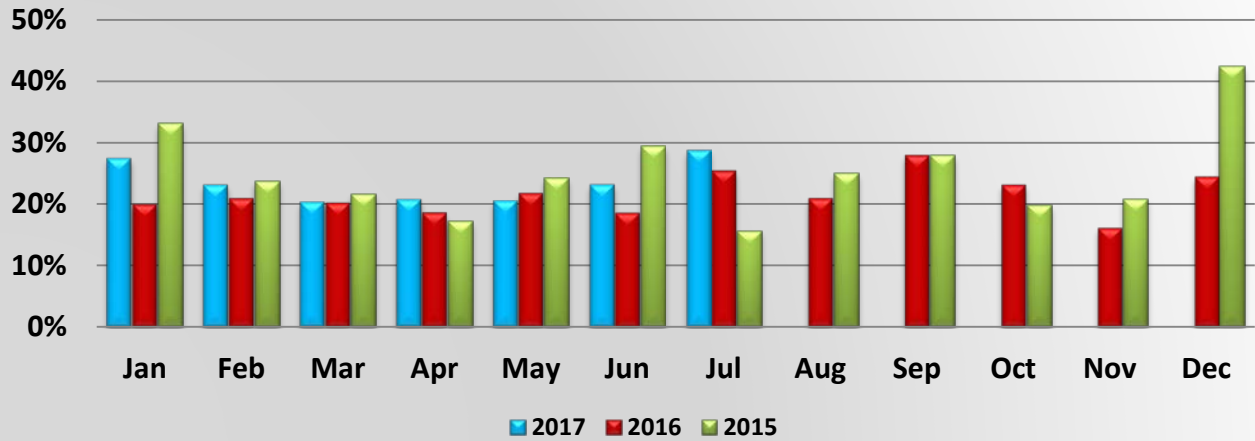
Percent of Total IRP Supplements paid thru the web



Percent of Total IRP Supplements paid thru the web

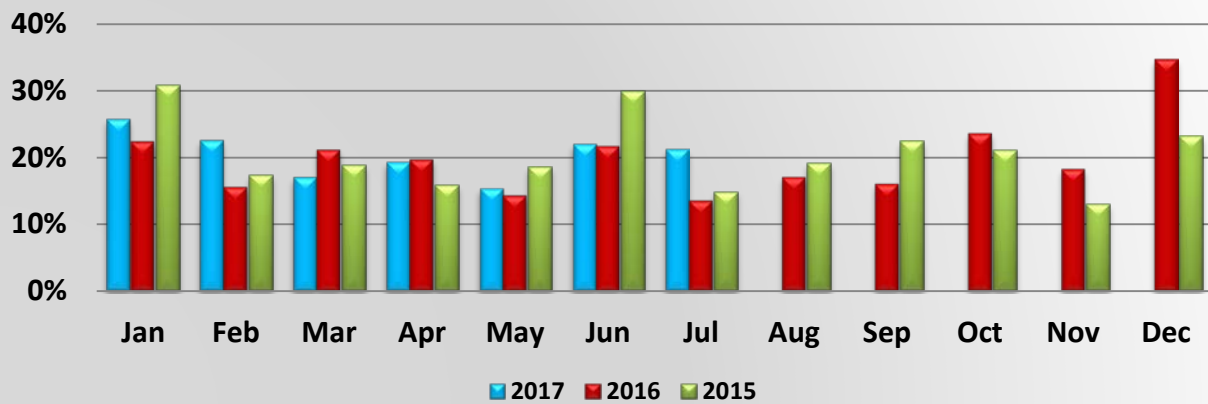
	Jan	Feb	Mar	Apr	May	Jun	Jul	Aug	Sep	Oct	Nov	Dec	Year End
2017	17.790%	16.340%	16.780%	17.340%									17.787%
2016	18.068%	15.316%	16.041%	17.439%	18.392%	16.306%	17.089%	17.585%	16.695%	17.661%	15.060%	13.092%	16.765%
2015	18.484%	14.157%	15.196%	15.542%	17.393%	14.230%	17.214%	16.557%	15.704%	15.758%	11.339%	13.132%	15.632%

Percent of Total IRP Registrations billed thru the web



	Jan	Feb	Mar	Apr	May	Jun	Jul	Aug	Sep	Oct	Nov	Dec
2017	27.500%	23.140%	20.390%	20.810%	20.620%	23.210%	28.790%					
2016	19.958%	20.896%	20.192%	18.598%	21.726%	18.558%	25.368%	20.908%	27.879%	23.087%	16.112%	24.413%
2015	33.140%	23.644%	21.663%	17.179%	24.119%	29.313%	15.644%	24.983%	27.944%	19.770%	20.817%	42.405%

Percent of Total IRP Registrations paid thru the web



	Jan	Feb	Mar	Apr	May	Jun	Jul	Aug	Sep	Oct	Nov	Dec
2017	25.695%	22.510%	17.040%	19.250%	15.360%	21.950%	21.170%					
2016	22.401%	15.579%	21.154%	19.699%	14.340%	21.647%	13.549%	17.057%	16.073%	23.264%	18.257%	34.639%
2015	30.780%	17.348%	18.842%	15.865%	18.571%	29.954%	14.841%	19.095%	22.420%	21.143%	12.970%	23.177%