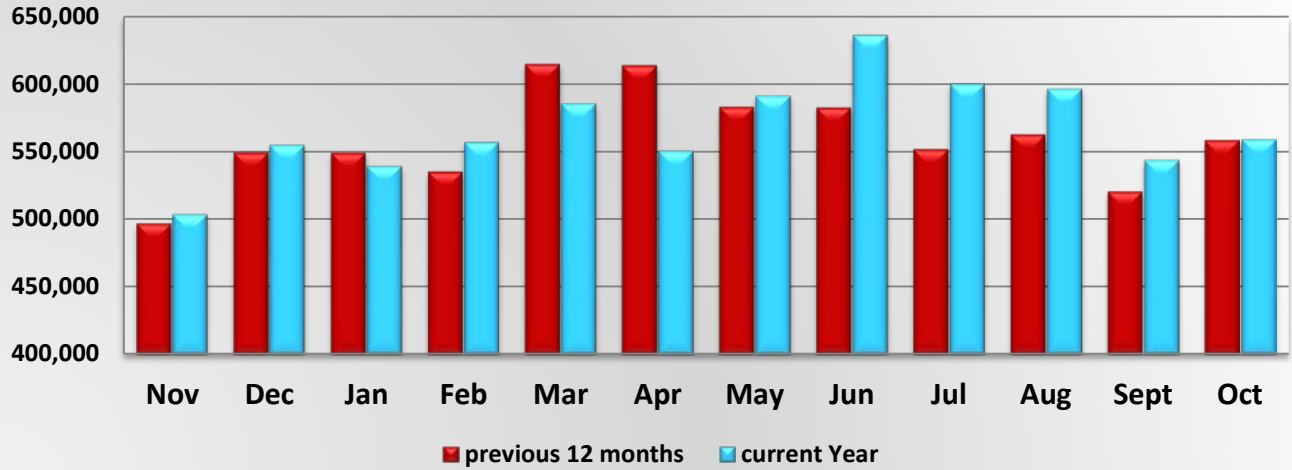


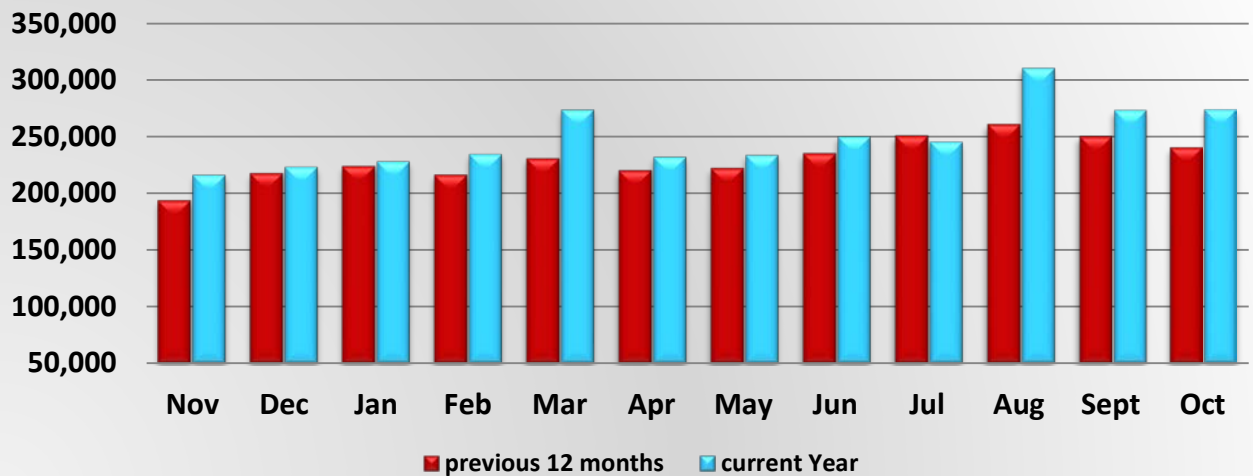
MCSAW PrePass Bypass Activity



MCSAW PrePass Bypass Activity

	Nov	Dec	Jan	Feb	Mar	Apr	May	Jun	Jul	Aug	Sept	Oct
Nov 14 - Oct 15	497,185	549,513	549,277	535,180	614,927	614,101	583,034	582,664	551,822	562,631	520,385	558,458
Nov 15 - Oct 16	503,725	554,896	539,473	556,983	585,466	550,519	591,268	636,085	600,055	596,519	543,856	559,086

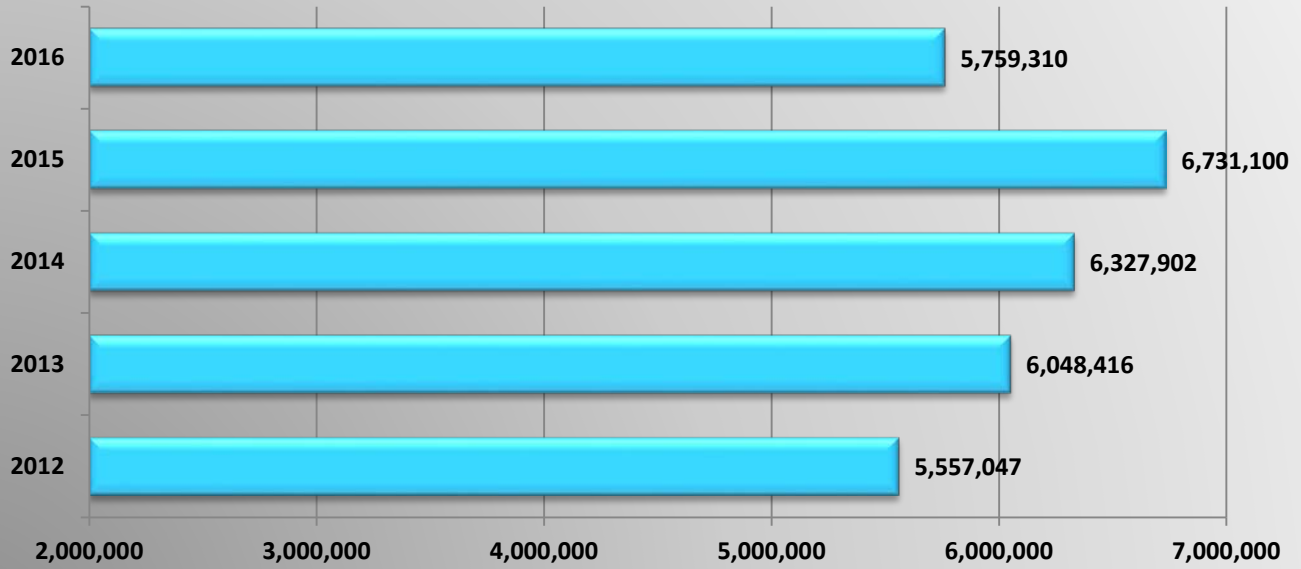
MCSAW PrePass Pull-in Activity



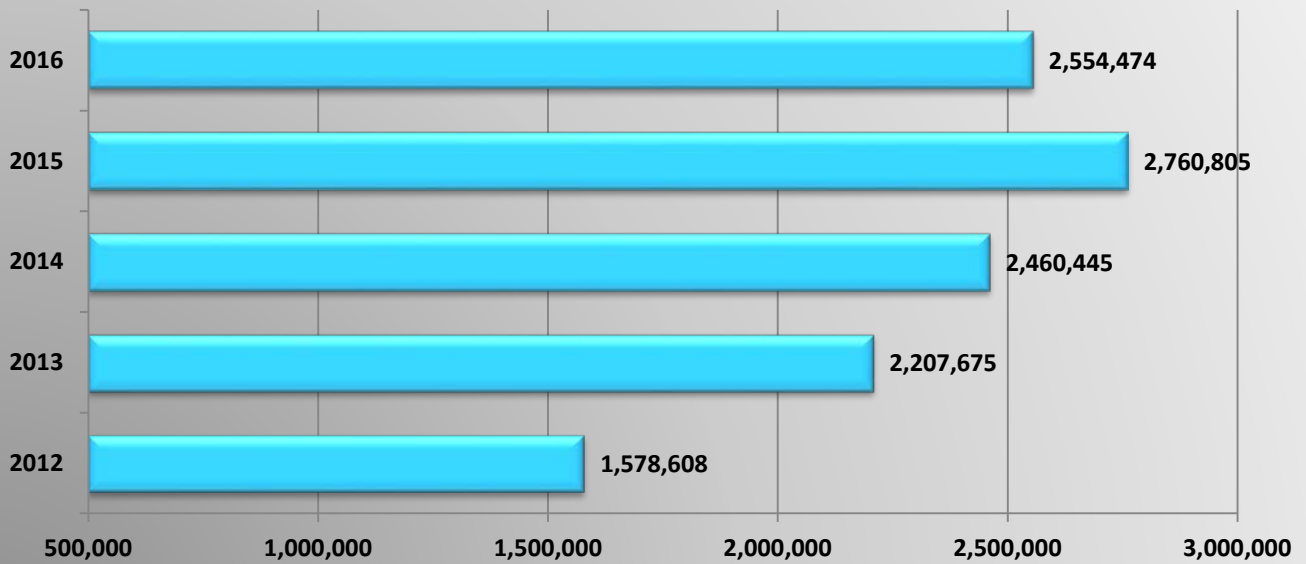
MCSAW PrePass Pull-in Activity

	Nov	Dec	Jan	Feb	Mar	Apr	May	Jun	Jul	Aug	Sept	Oct
Nov 14 - Oct 15	193,648	217,535	223,711	216,193	230,503	220,268	222,135	235,009	250,764	260,772	250,196	240,071
Nov 15 - Oct 16	216,057	223,356	228,085	234,511	273,458	231,893	233,674	250,017	245,420	310,226	273,274	273,916

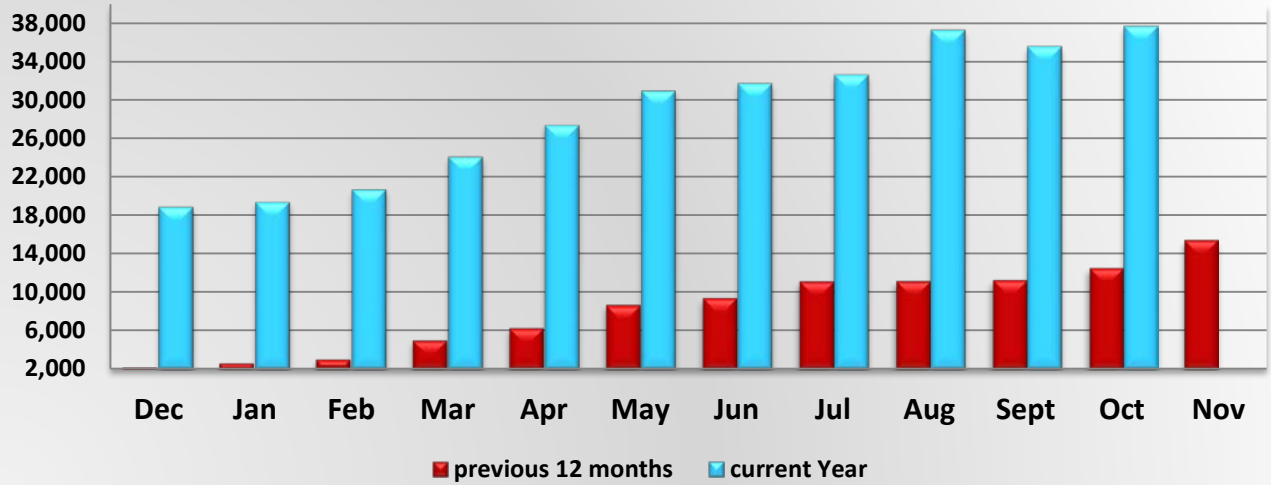
MCSAW Annual Number of Prepass Bypasses



MCSAW Annual Number of Prepass Pull-ins



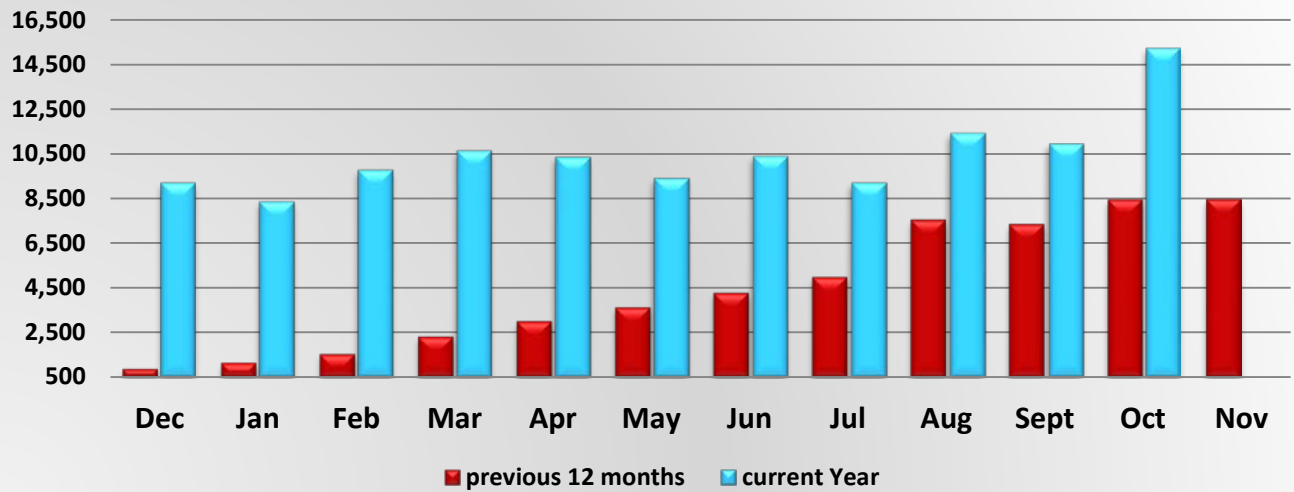
MCSAW Driveway Bypass Activity



MCSAW Driveway Bypass Activity

	Dec	Jan	Feb	Mar	Apr	May	Jun	Jul	Aug	Sept	Oct	Nov
Dec 14 - Nov 15	2,196	2,637	3,030	5,057	6,295	8,679	9,372	11,125	11,137	11,239	12,470	15,378
Dec 15 - Nov 16	18,906	19,402	20,721	24,109	27,375	30,952	31,717	32,633	37,249	35,552	37,642	

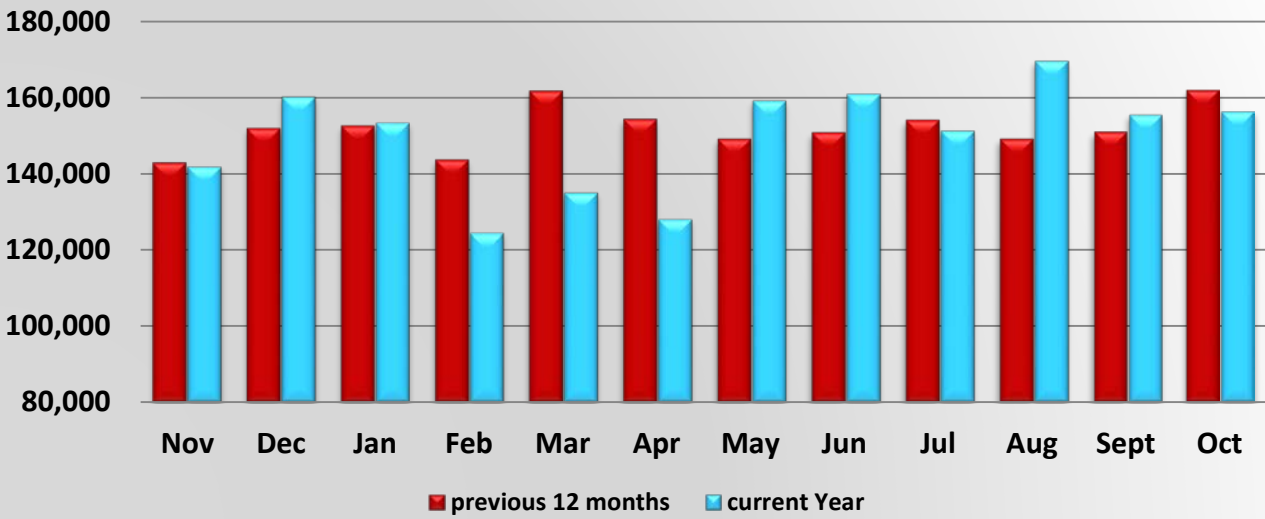
MCSAW Driveway Pull-in Activity



MCSAW PrePass Pull-in Activity

	Dec	Jan	Feb	Mar	Apr	May	Jun	Jul	Aug	Sept	Oct	Nov
Dec 14 - Nov 15	878	1,151	1,547	2,322	3,001	3,615	4,267	4,967	7,534	7,343	8,446	8,453
Dec 15 - Nov 16	9,196	8,363	9,770	10,637	10,358	9,408	10,401	9,196	11,421	10,954	15,222	

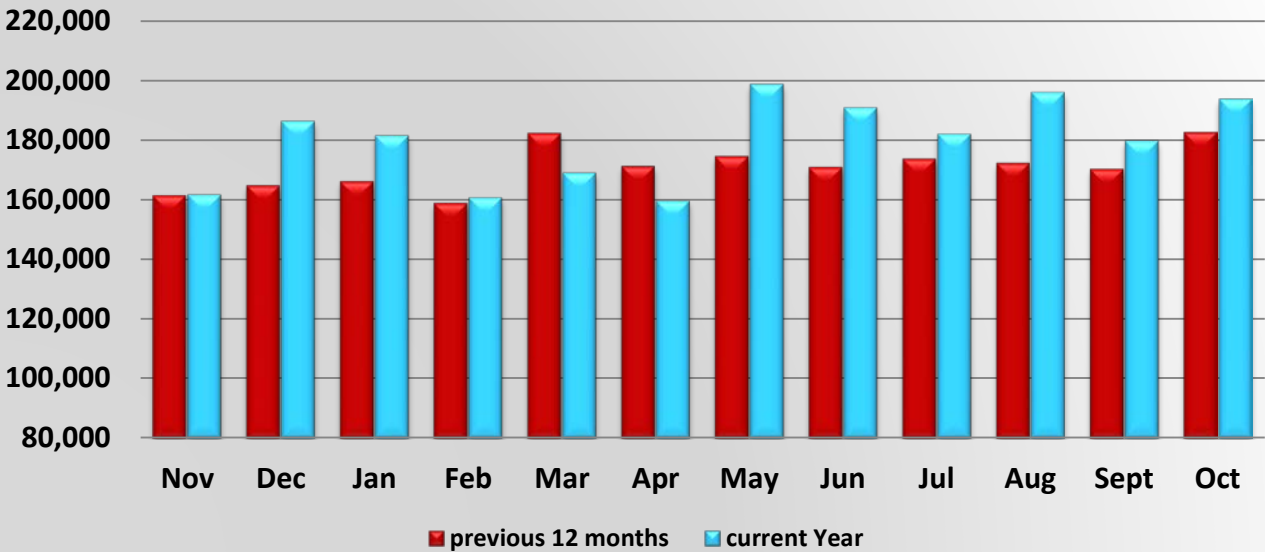
AgPass Bypass Activity at DACS Agricultural Interdiction Stations



DACS Agpass Bypass Activity

	Nov	Dec	Jan	Feb	Mar	Apr	May	Jun	Jul	Aug	Sept	Oct
Nov 14 - Oct 15	142,914	151,890	152,573	143,651	161,788	154,366	149,155	150,785	154,093	149,139	151,031	161,944
Nov 15 - Oct 16	141,902	160,235	153,450	124,598	135,104	128,123	159,198	161,024	151,308	169,694	155,517	156,399

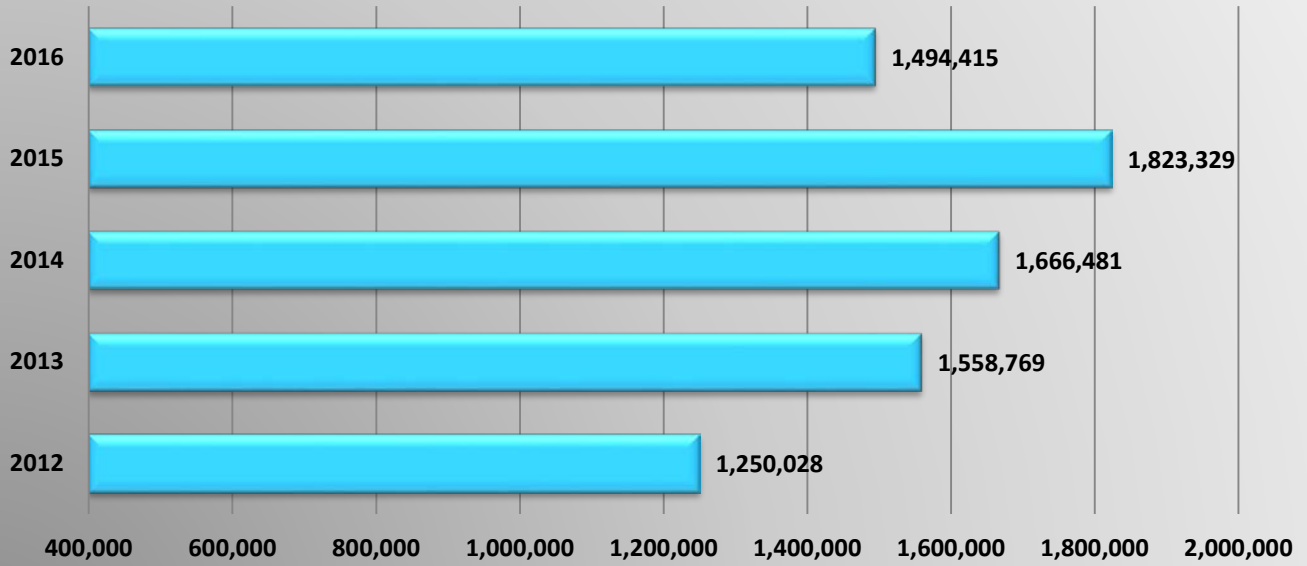
AgPass Pullin Activity at DACS Agricultural Interdiction Stations



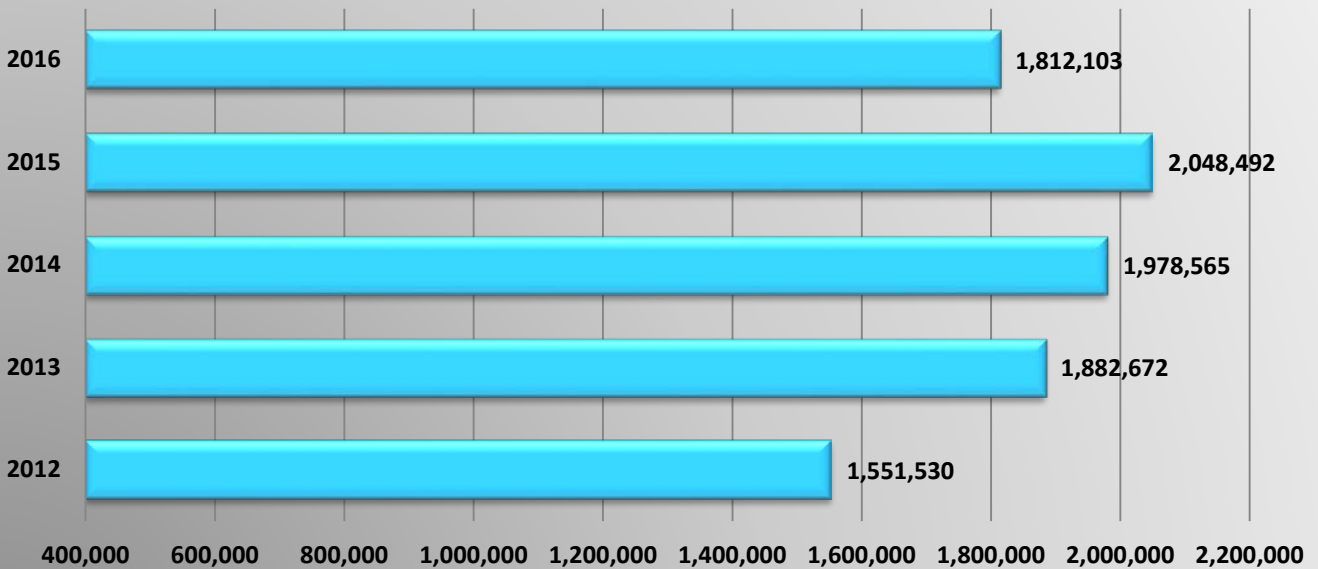
DACS Agpass Pull-in Activity

	Nov	Dec	Jan	Feb	Mar	Apr	May	Jun	Jul	Aug	Sept	Oct
Nov 14 - Oct 15	161,332	164,698	166,144	158,828	182,220	171,173	174,525	170,811	173,642	172,294	170,218	182,607
Nov 15 - Oct 16	161,679	186,355	181,477	160,753	169,033	159,665	198,675	190,869	182,082	196,008	179,801	193,740

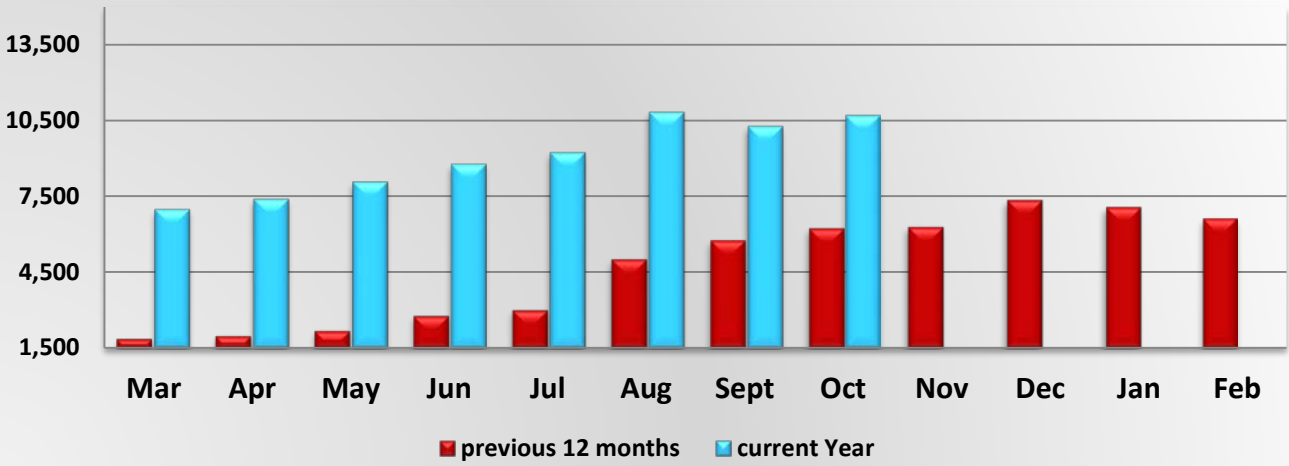
Annual Number of DACS Bypasses



Annual Number of DACS Pullins

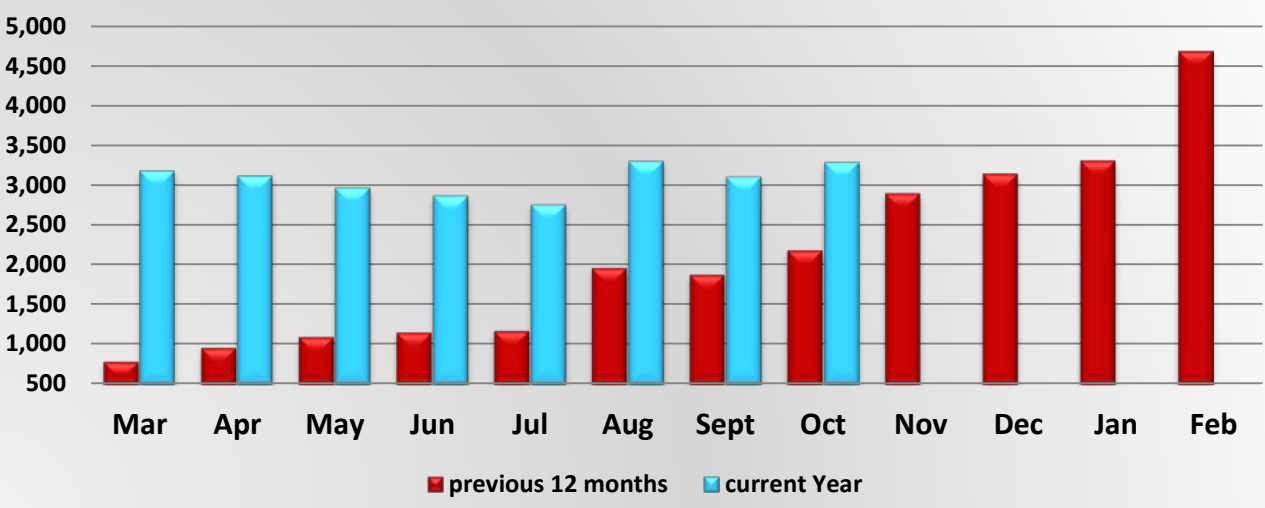


DACS Driveway Bypass Activity



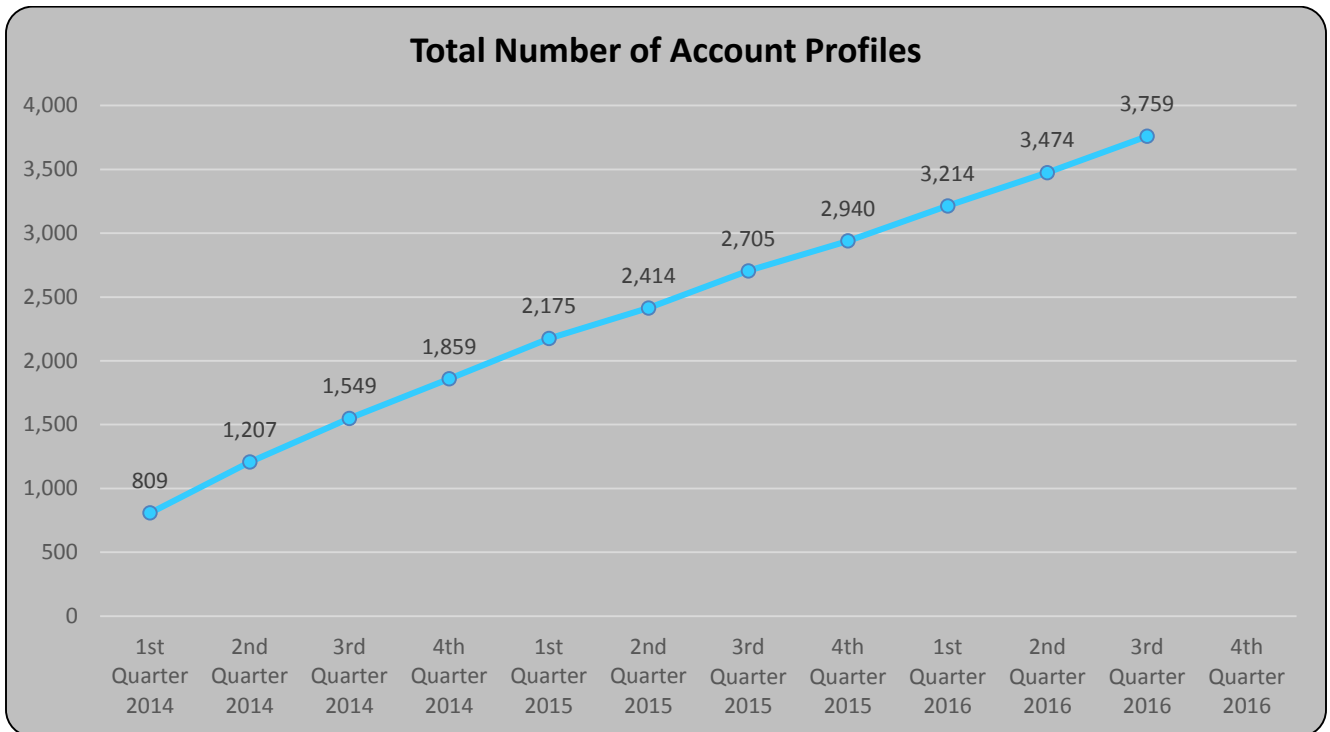
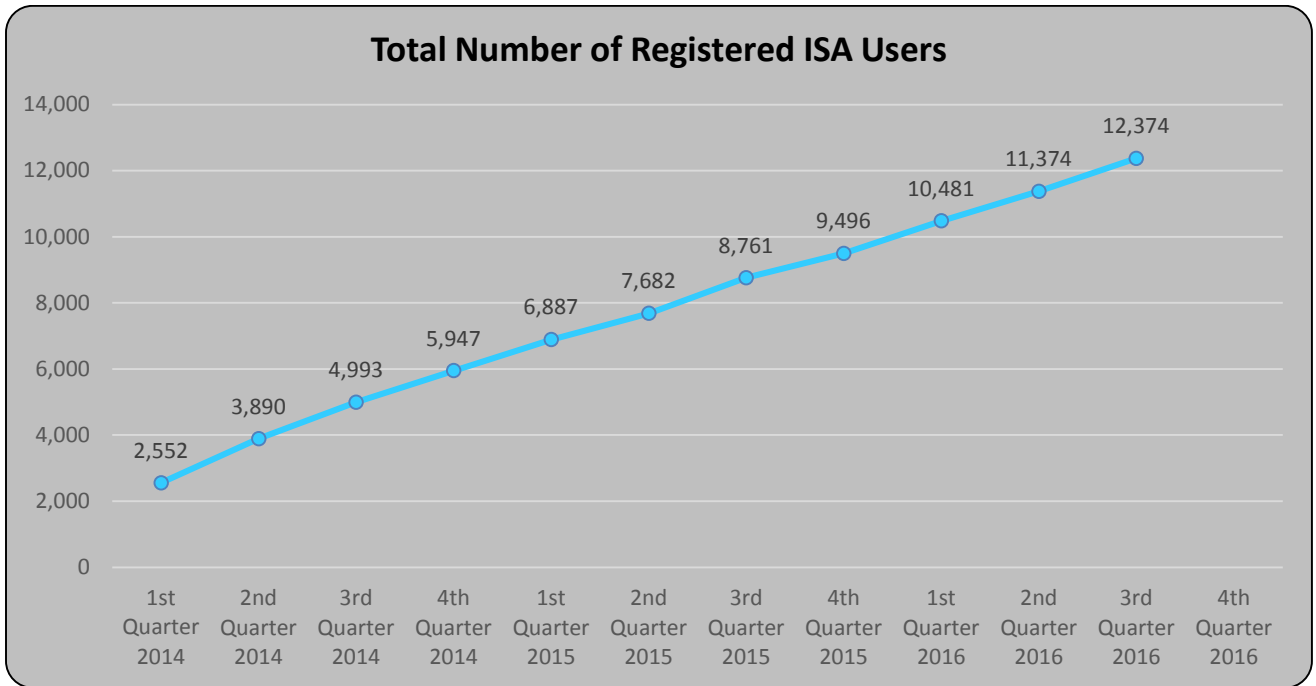
DACS Driveway Bypass Activity												
	Mar	Apr	May	Jun	Jul	Aug	Sept	Oct	Nov	Dec	Jan	Feb
Mar 15 - Feb 16	1,872	1,992	2,200	2,788	3,017	5,008	5,754	6,227	6,269	7,336	7,062	6,621
Mar 16 - Feb 17	6,985	7,392	8,075	8,767	9,231	10,822	10,273	10,696				

DACS Driveway Pull-in Activity

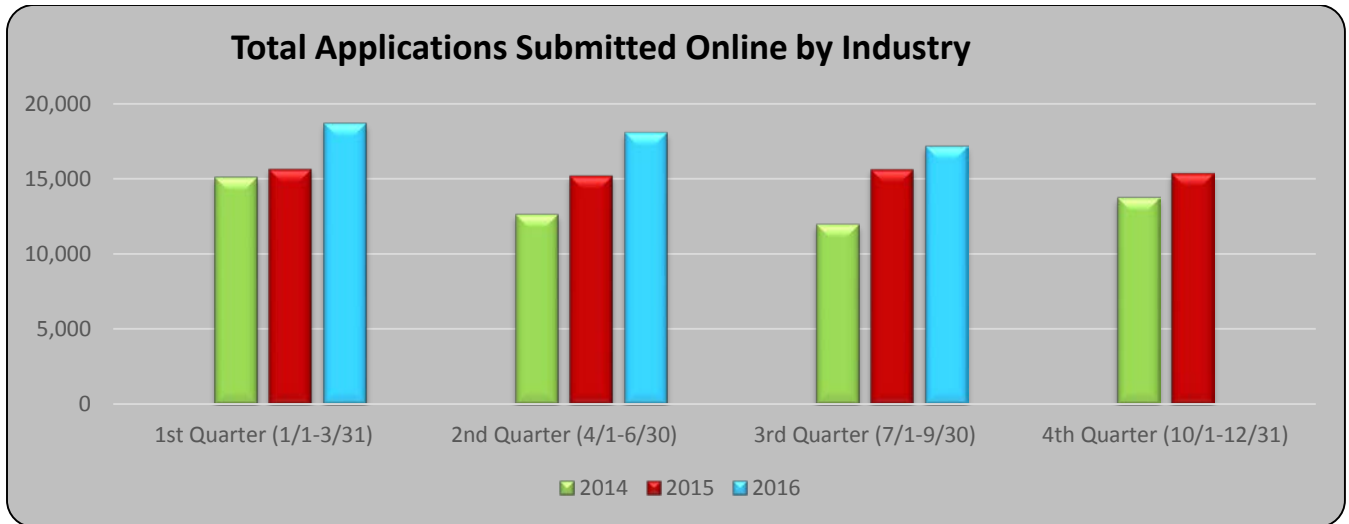


DACS Driveway Pull-in Activity												
	Mar	Apr	May	Jun	Jul	Aug	Sept	Oct	Nov	Dec	Jan	Feb
Mar 15 - Feb 16	787	960	1,096	1,153	1,174	1,967	1,881	2,189	2,899	3,145	3,309	4,684
Mar 16 - Feb 17	3,179	3,114	2,965	2,865	2,752	3,301	3,102	3,287				

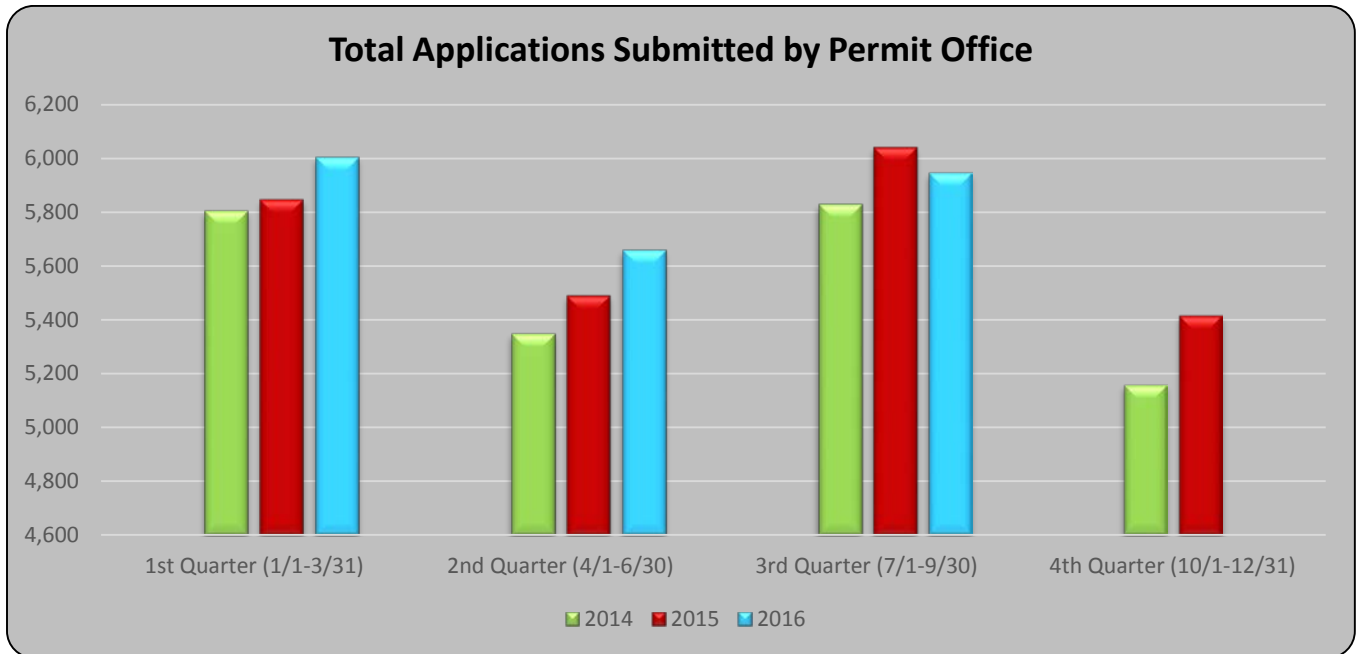
Permit Application Stats



Permit Application Stats

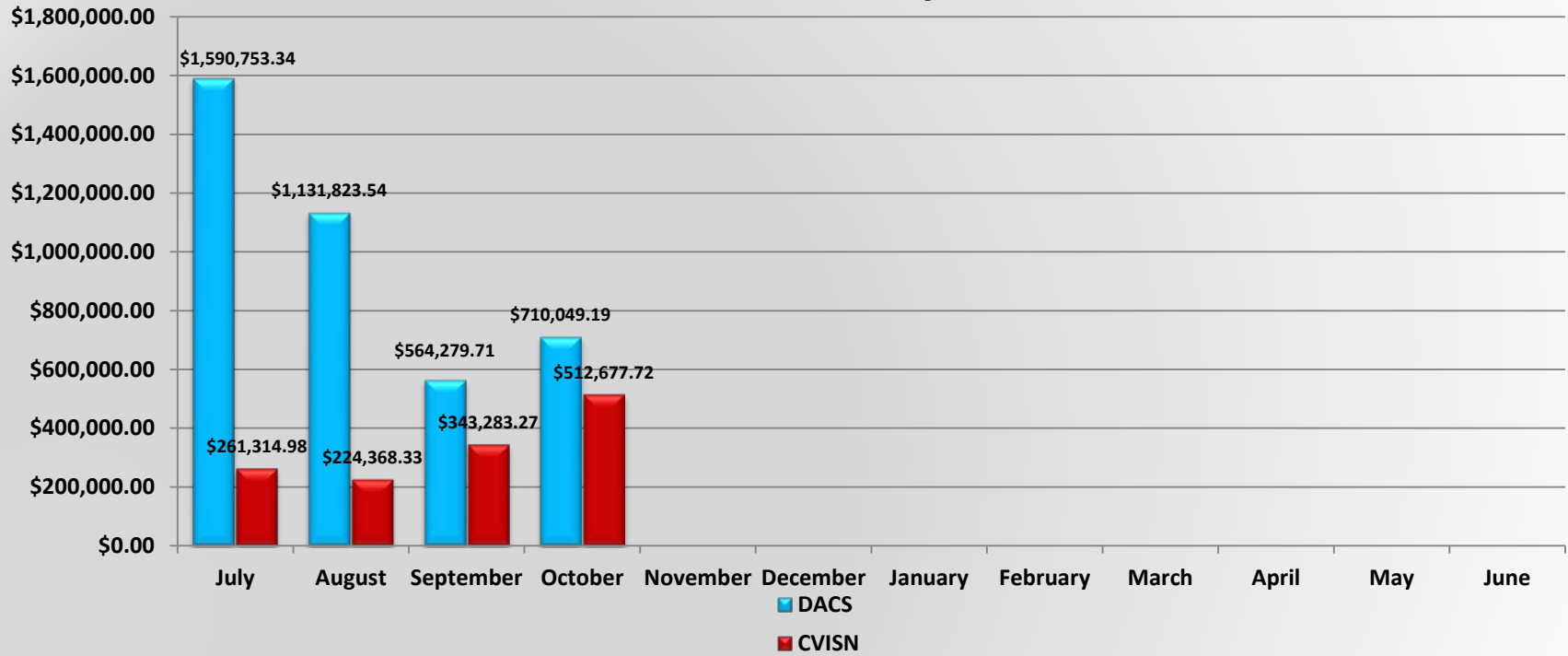


Total Applications Submitted Online by Industry				
	1st Quarter	2nd Quarter	3rd Quarter	4th Quarter
2014	15,081	12,617	11,965	13,719
2015	15,655	15,189	15,630	15,367
2016	18,677	18,056	17,145	

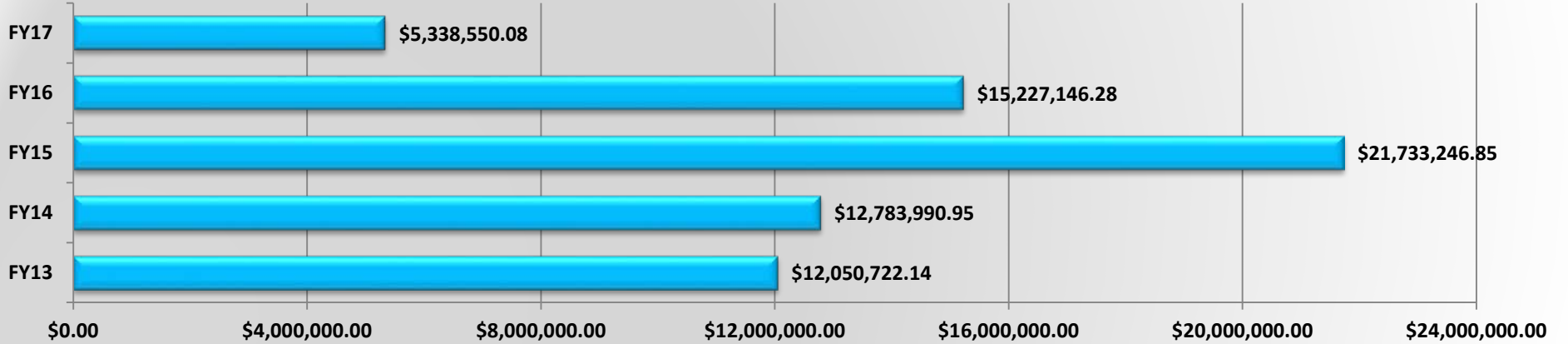


Total Applications Submitted by Permit Office				
	1st Quarter	2nd Quarter	3rd Quarter	4th Quarter
2014	5,805	5,350	5,830	5,160
2015	5,847	5,492	6,041	5,416
2016	6,003	5,659	5,945	

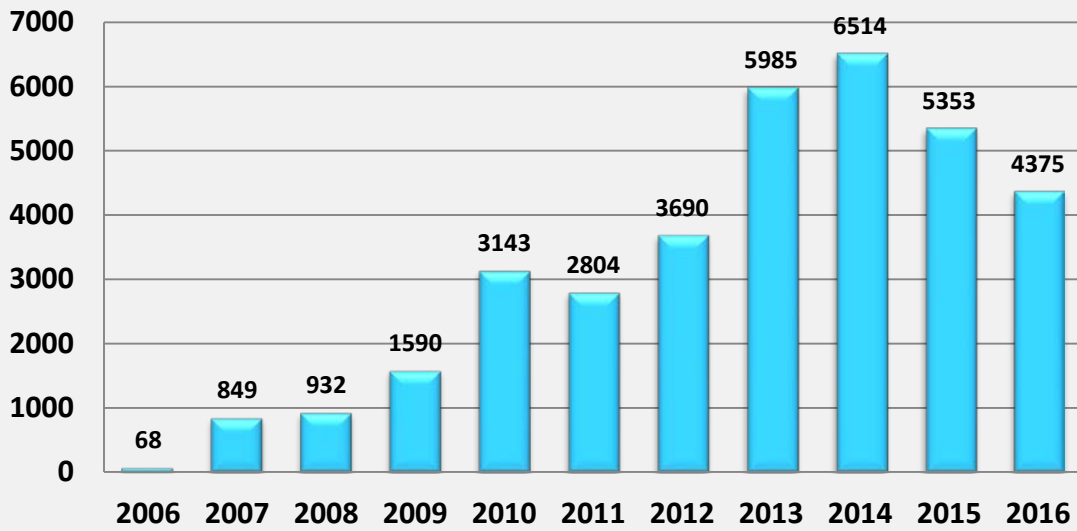
DACS/CVISN Recovery 2016-2017



DACS/CVISN Recovery Fiscal Year Comparison

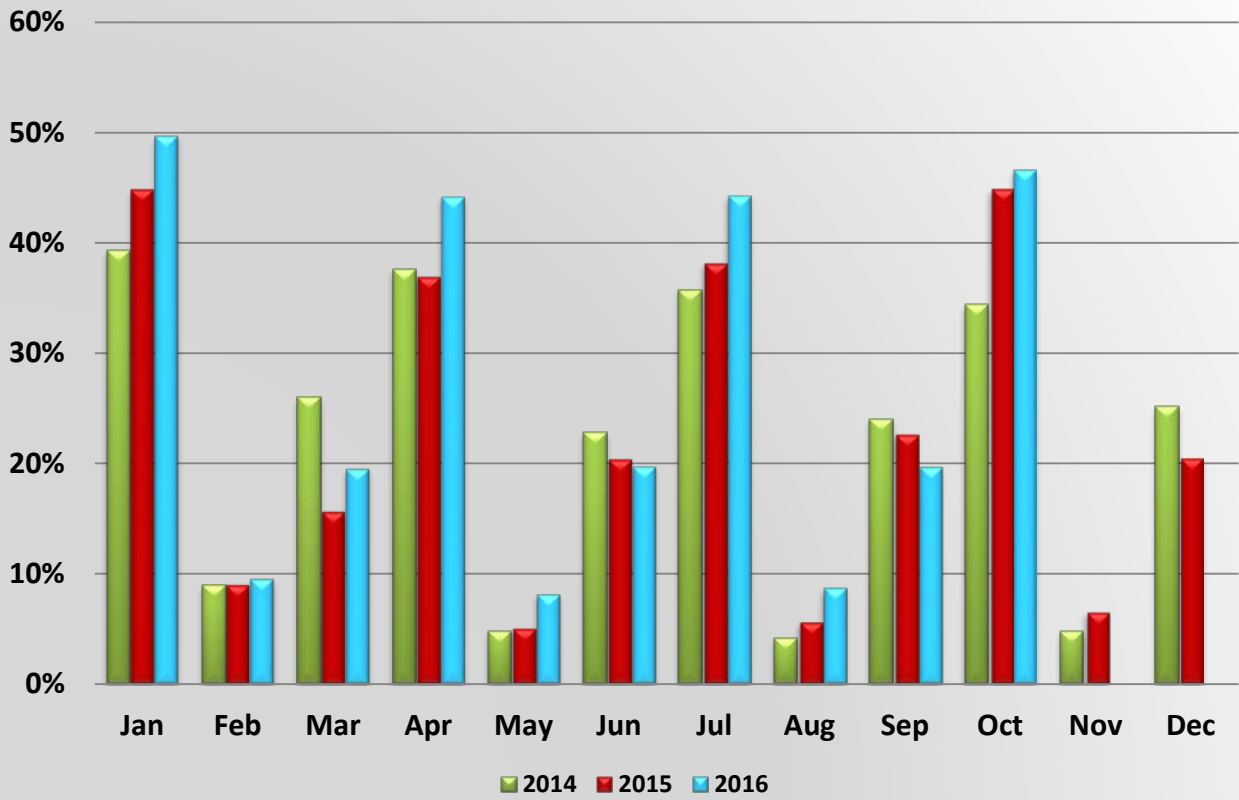


Number of New CVISN Accounts at DHSMV

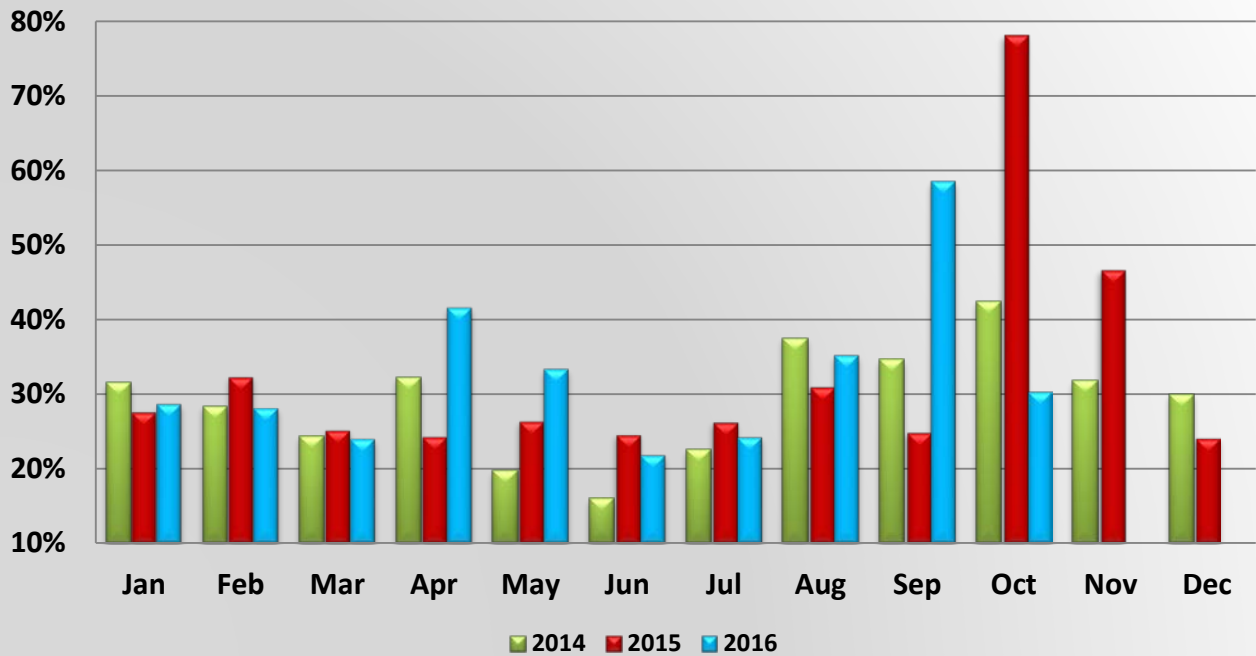


Total Number of New CVISN Accounts													
	Jan	Feb	Mar	Apr	May	Jun	Jul	Aug	Sep	Oct	Nov	Dec	Yearly Total
2006	0	0	0	0	0	0	0	0	17	35	11	5	68
2007	12	10	11	251	224	26	34	30	63	45	56	87	849
2008	39	266	30	37	25	35	35	52	112	165	72	64	932
2009	69	75	65	88	81	426	149	119	129	125	95	169	1590
2010	77	153	273	382	202	205	234	256	304	347	346	364	3143
2011	295	278	388	177	114	170	194	208	309	233	204	234	2804
2012	356	313	295	256	345	281	300	279	238	544	235	248	3690
2013	469	374	406	402	383	390	452	376	410	683	753	887	5985
2014	779	632	577	415	373	612	509	420	478	395	661	633	6484
2015	489	480	631	403	398	519	425	430	249	389	446	494	5353
2016	572	517	549	386	345	460	384	410	394	358			4375

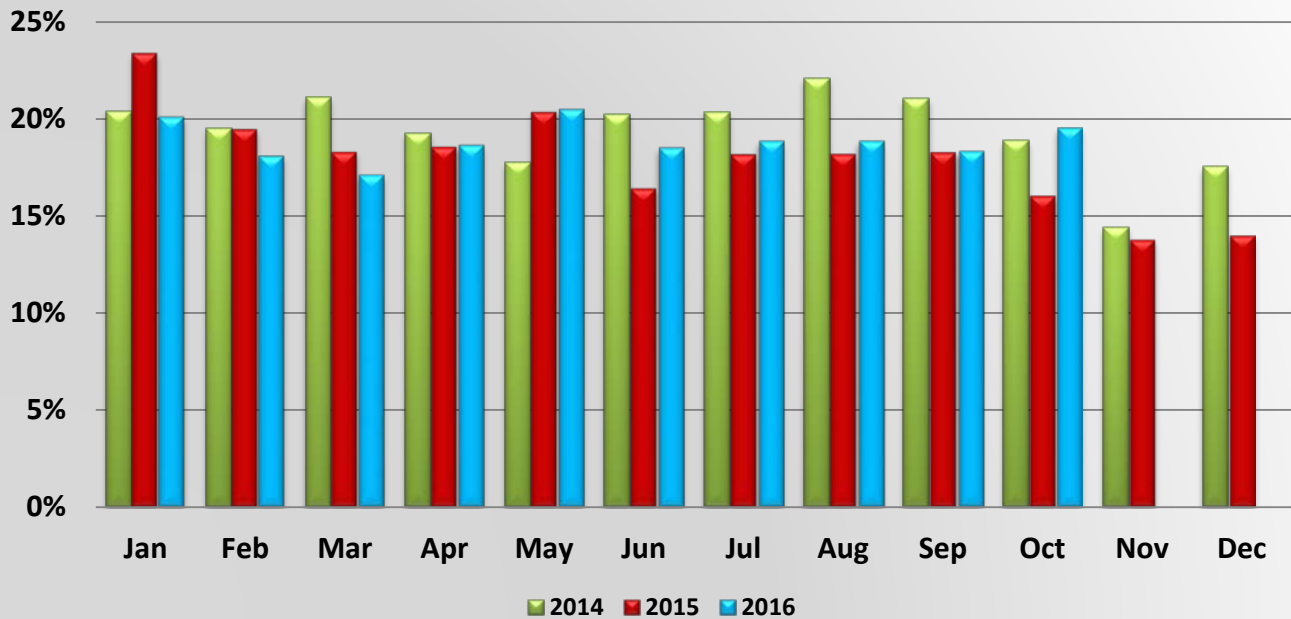
Percent of Total IFTA Tax Returns



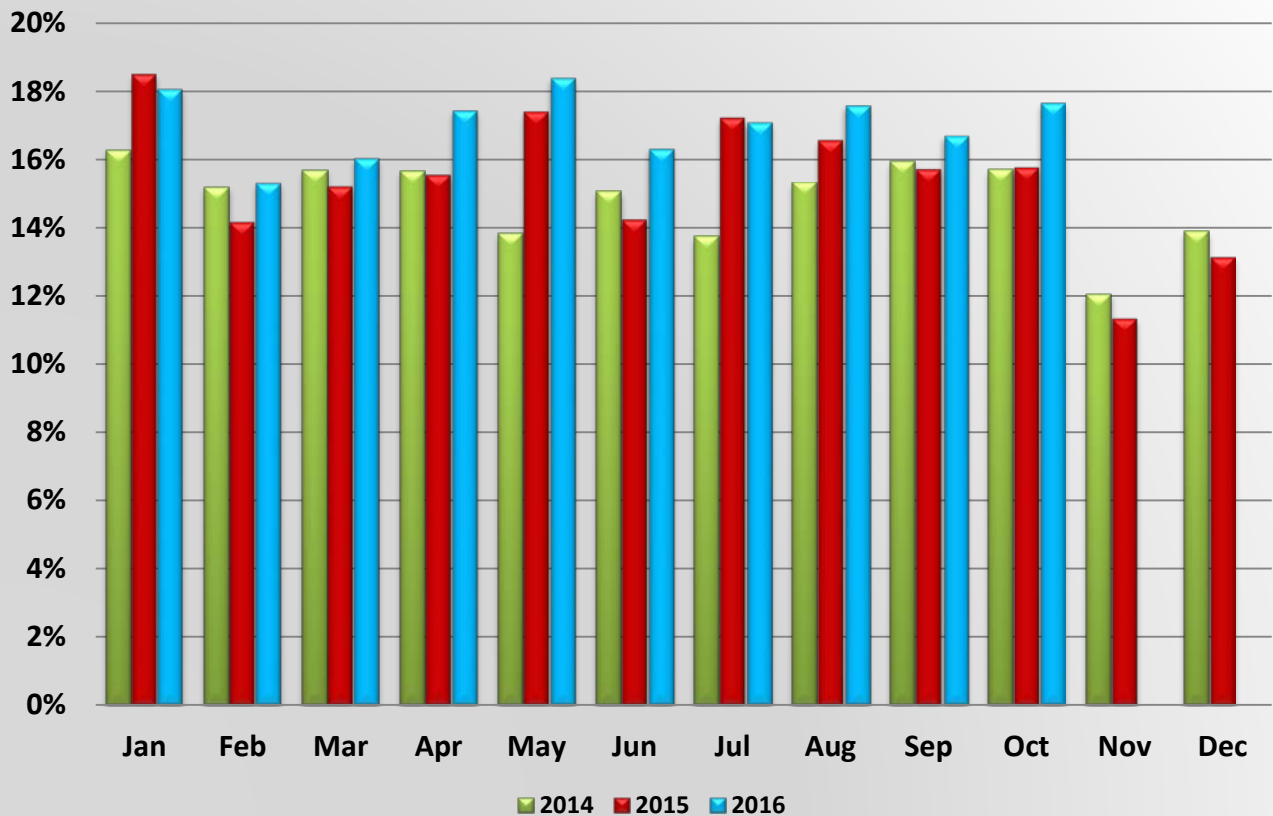
Percent of Total IFTA Decals Issued



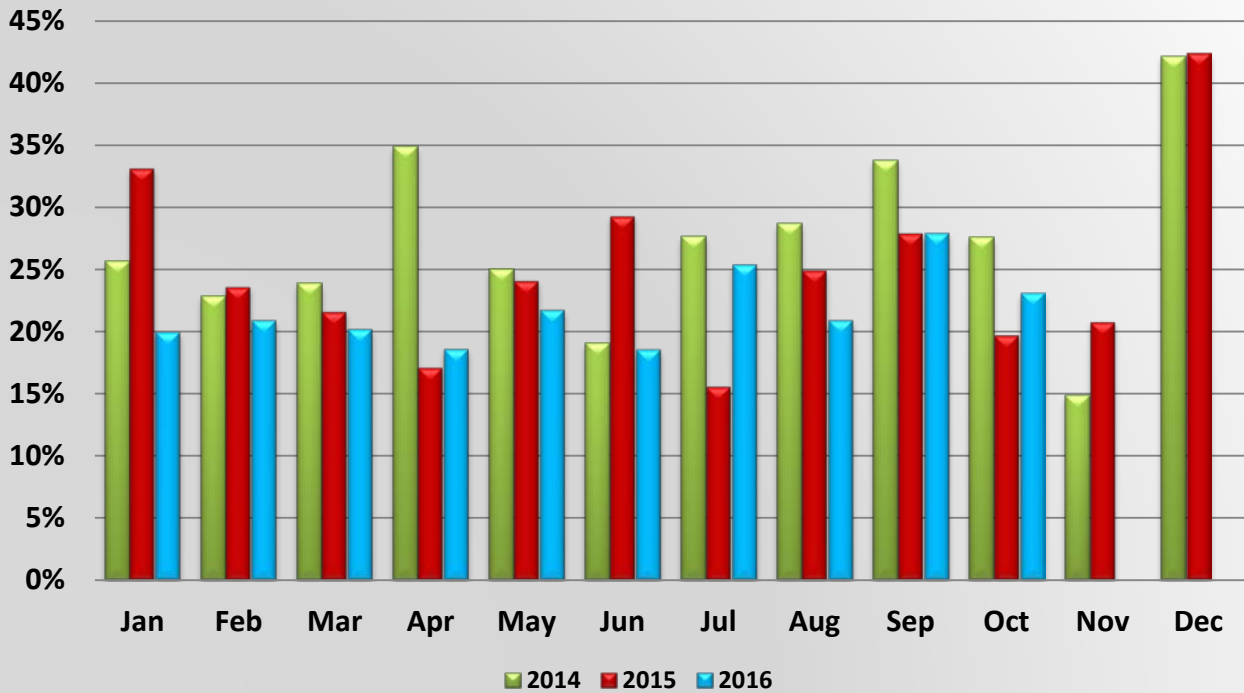
Percent of Total IRP Supplements Billed thru the web



Percent of Total IRP Supplements paid thru the web



Percent of Total IRP Registrations billed thru the web



Percent of Total IRP Registrations paid thru the web

