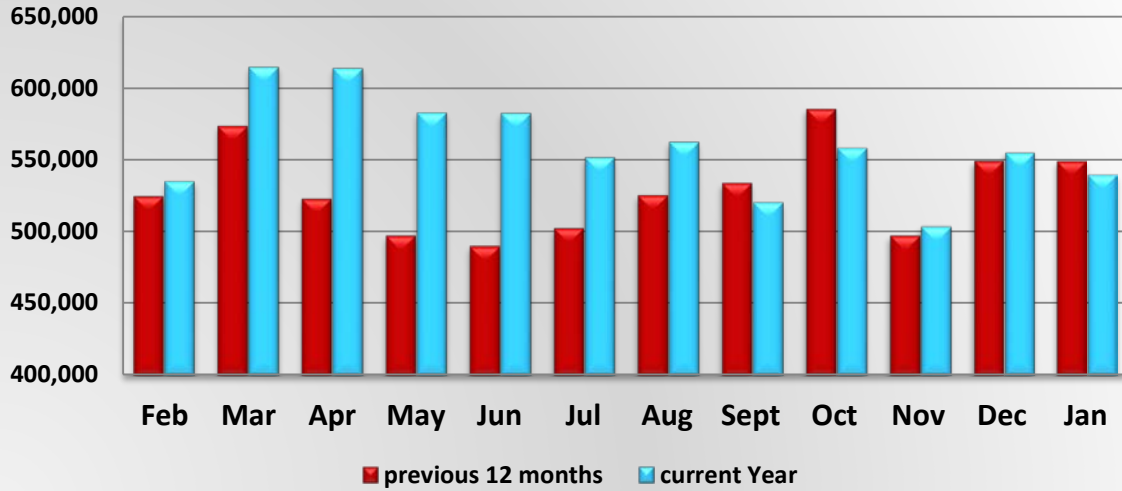
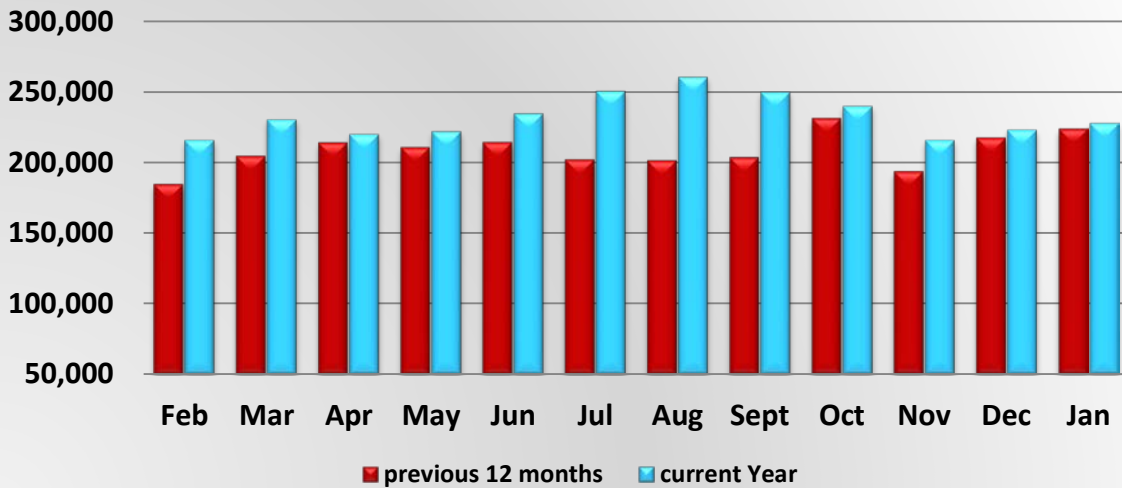


MCSAW PrePass Bypass Activity



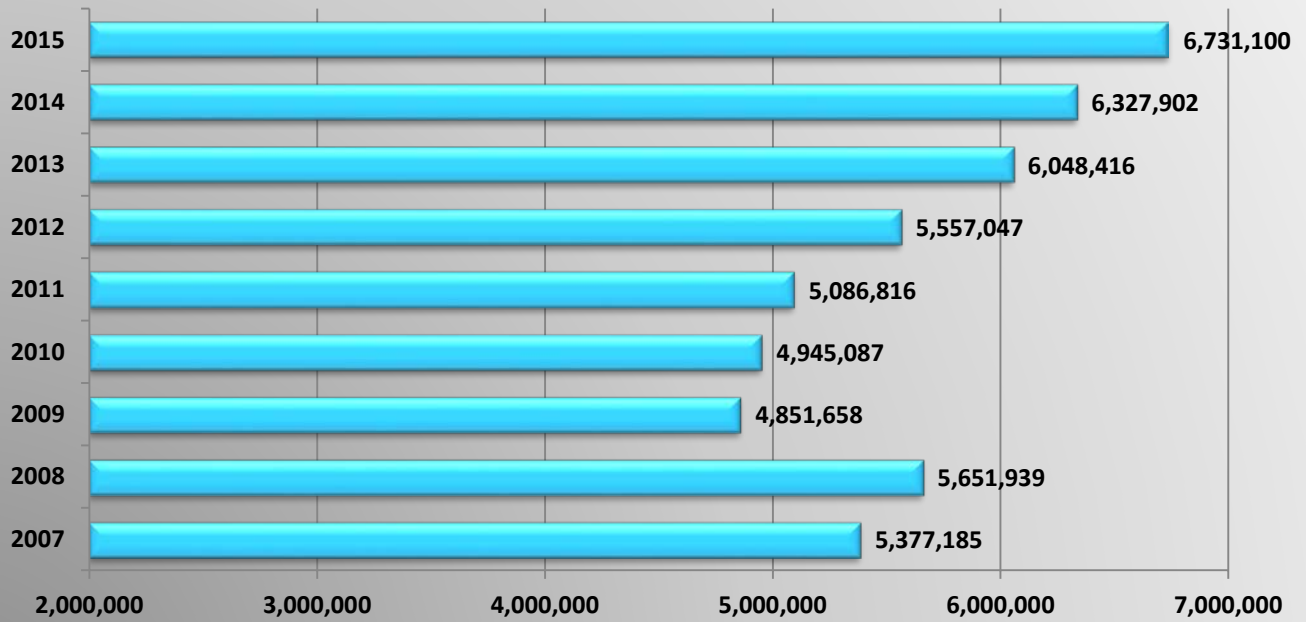
MCSAW PrePass Bypass Activity												
	Feb	Mar	Apr	May	Jun	Jul	Aug	Sept	Oct	Nov	Dec	Jan
Feb 14 - Jan 15	524,735	573,786	522,930	497,348	490,001	502,427	525,523	533,860	585,722	497,185	549,513	549,277
Feb 15 - Jan 16	535,180	614,927	614,101	583,034	582,664	551,822	562,631	520,385	558,458	503,725	554,896	539,473

MCSAW PrePass Pull-in Activity

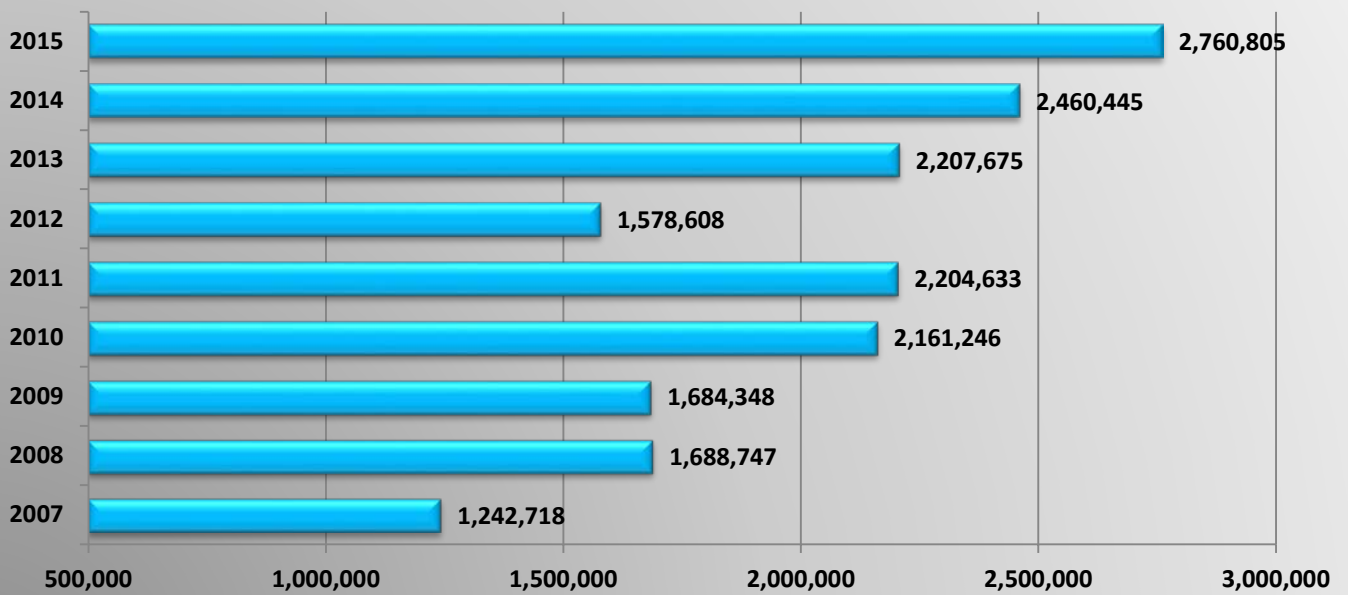


MCSAW PrePass Pull-in Activity												
	Feb	Mar	Apr	May	Jun	Jul	Aug	Sept	Oct	Nov	Dec	Jan
Feb 14 - Jan 15	184,484	204,522	214,147	210,570	214,365	201,979	201,437	203,534	231,355	193,648	217,535	223,711
Feb 15 - Jan 16	216,193	230,503	220,268	222,135	235,009	250,764	260,772	250,196	240,071	216,057	223,356	228,085

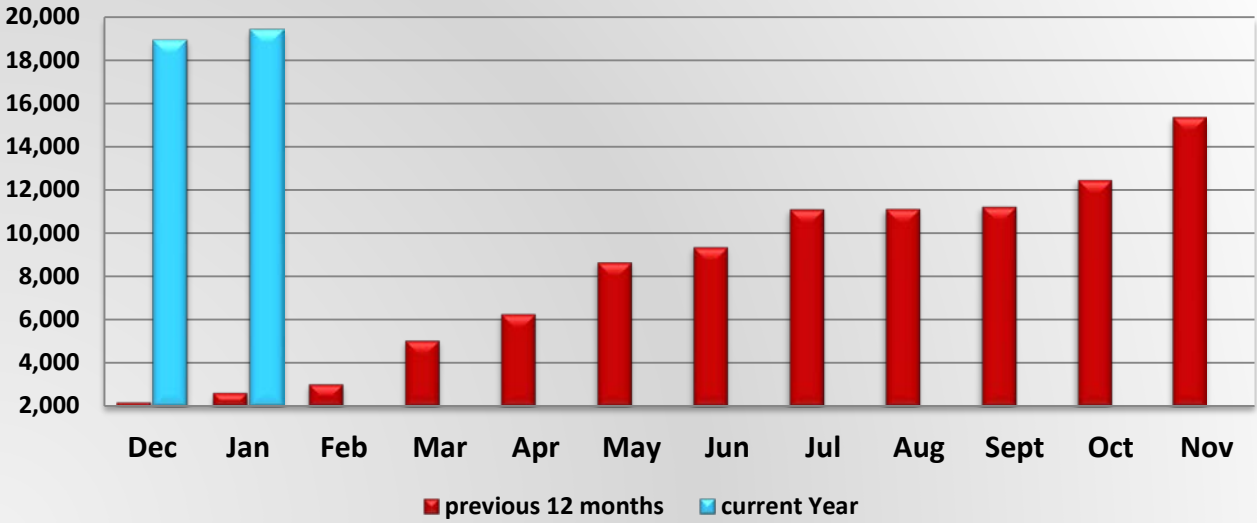
MCSAW Annual Number of Prepass Bypasses



MCSAW Annual Number of Prepass Pull-ins



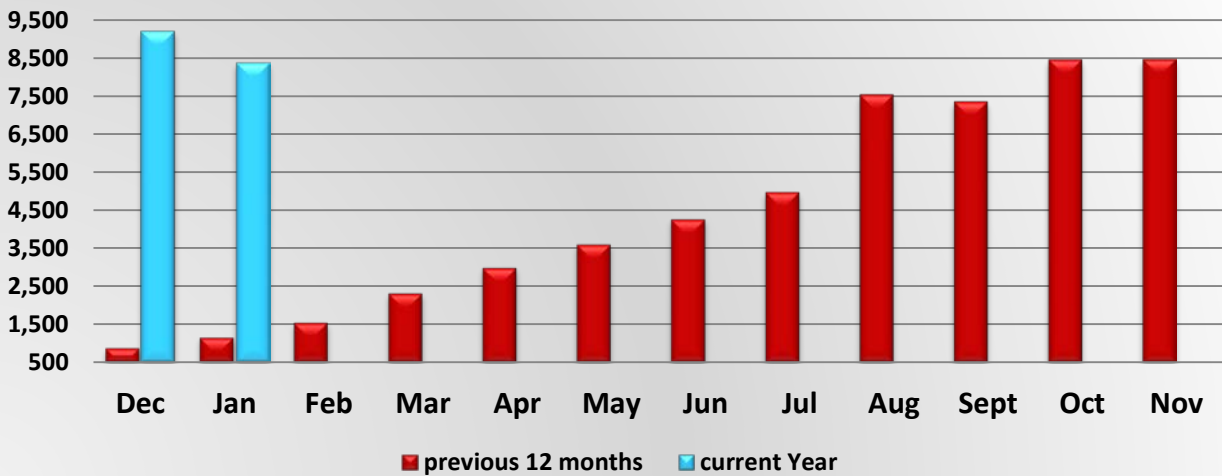
MCSAW Driveway Bypass Activity



MCSAW Driveway Bypass Activity

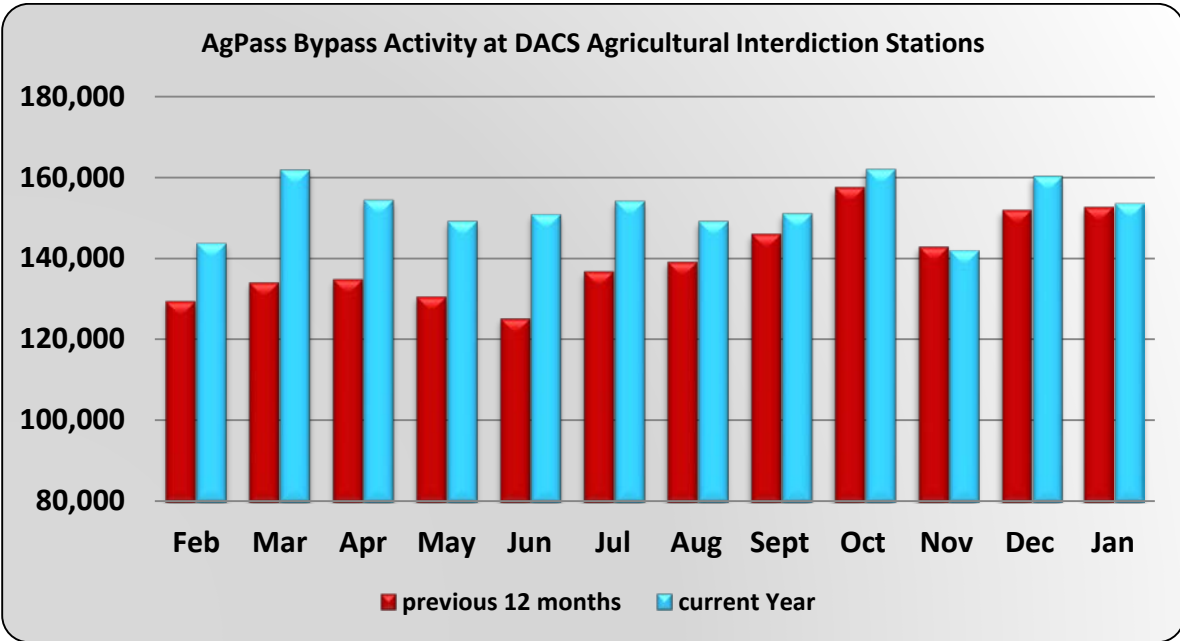
	Dec	Jan	Feb	Mar	Apr	May	Jun	Jul	Aug	Sept	Oct	Nov
Dec 14 - Nov 15	2,196	2,637	3,030	5,057	6,295	8,679	9,372	11,125	11,137	11,239	12,470	15,378
Dec 15 - Nov 16	18,906	19,402										

MCSAW Driveway Pull-in Activity

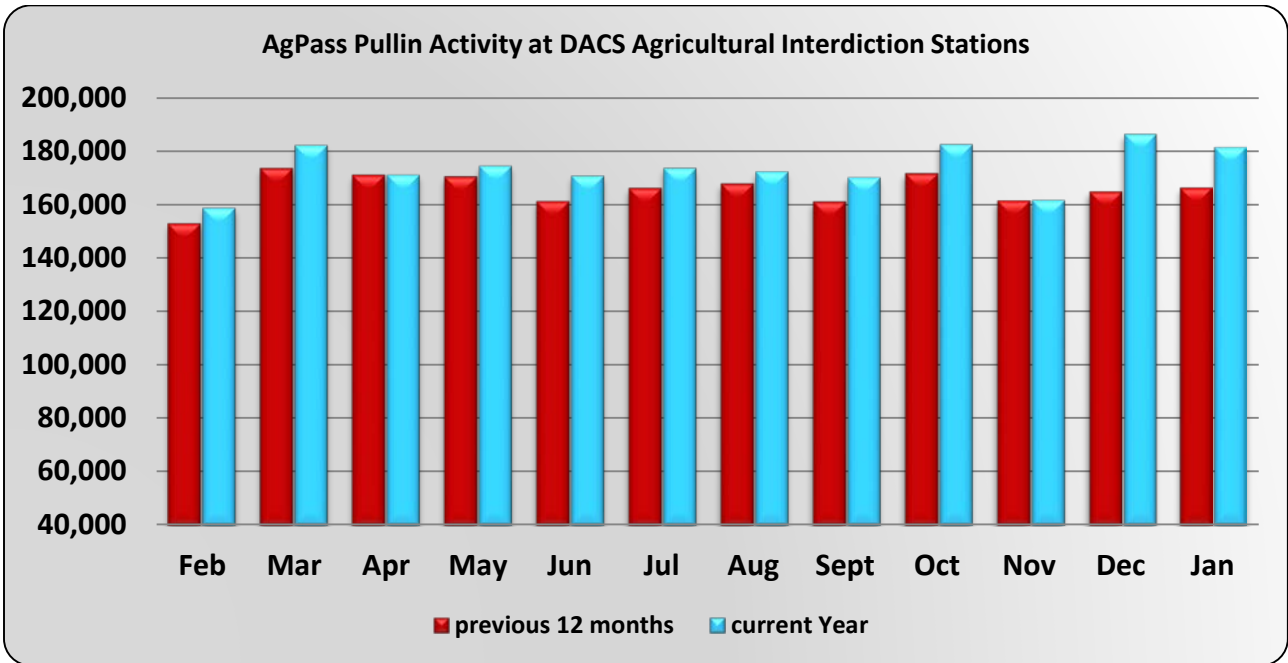


MCSAW PrePass Pull-in Activity

	Dec	Jan	Feb	Mar	Apr	May	Jun	Jul	Aug	Sept	Oct	Nov
Dec 14 - Nov 15	878	1,151	1,547	2,322	3,001	3,615	4,267	4,967	7,534	7,343	8,446	8,453
Dec 15 - Nov 16	9,196	8,363										

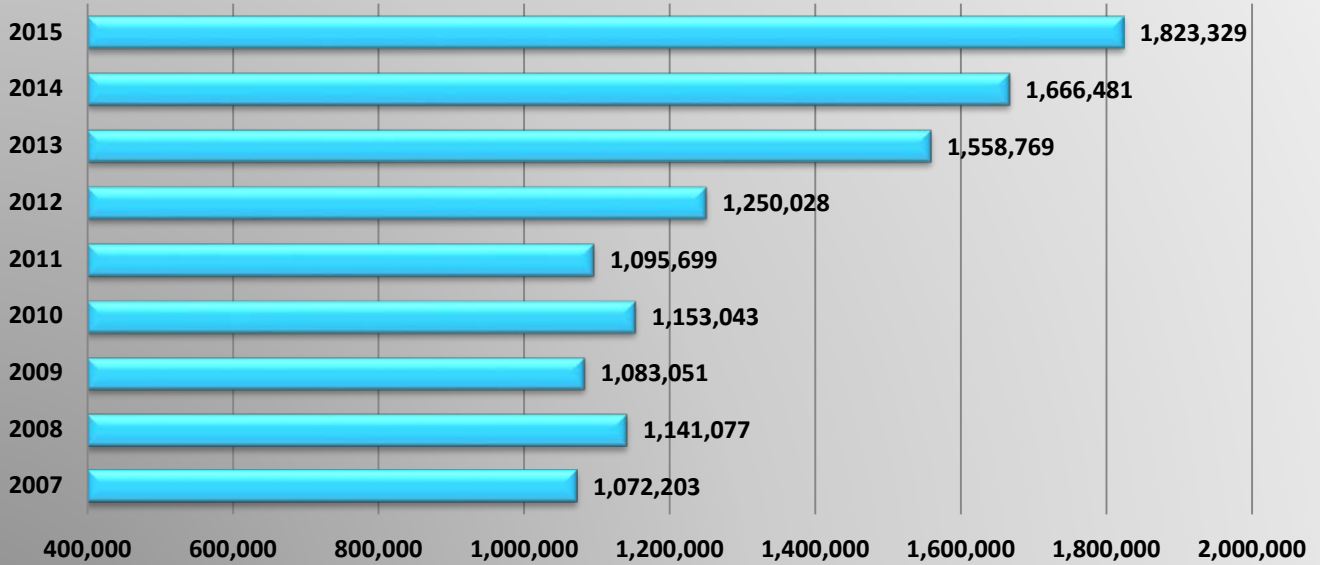


DACs Agpass Bypass Activity												
	Feb	Mar	Apr	May	Jun	Jul	Aug	Sept	Oct	Nov	Dec	Jan
Feb 14 - Jan 15	129,528	134,090	134,905	130,665	125,233	136,825	139,176	146,029	157,541	142,914	151,890	152,573
Feb 15 - Jan 16	143,651	161,788	154,366	149,155	150,785	154,093	149,139	151,031	161,944	141,902	160,235	153,450

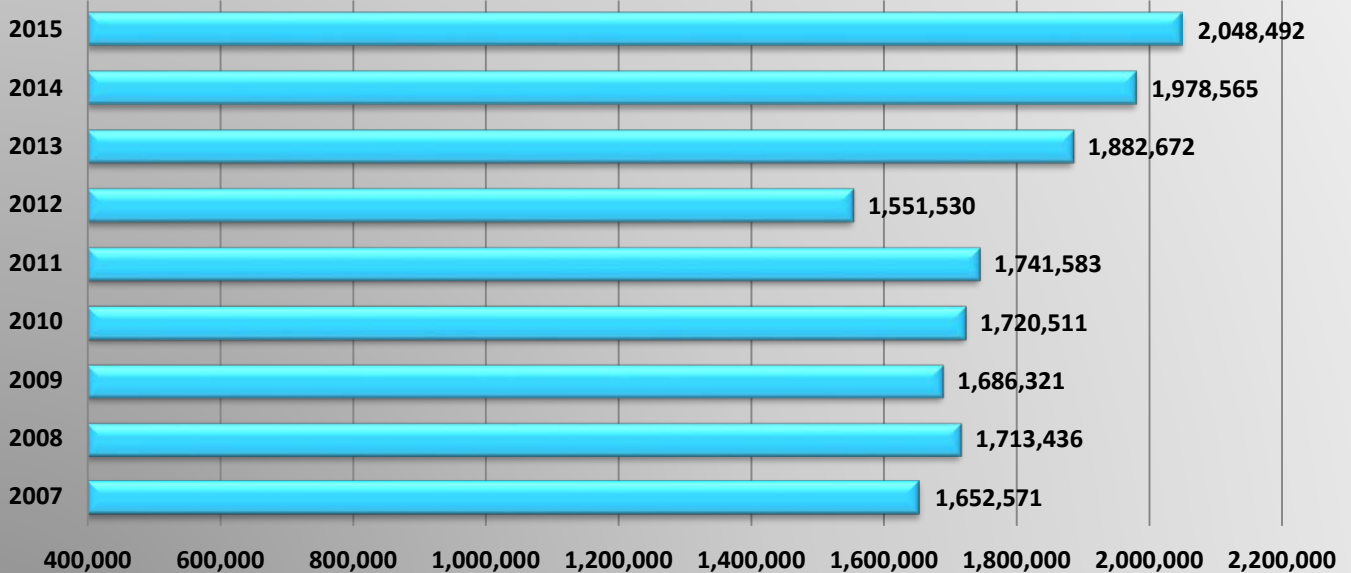


DACs Agpass Pull-in Activity												
	Feb	Mar	Apr	May	Jun	Jul	Aug	Sept	Oct	Nov	Dec	Jan
Feb 14 - Jan 15	152,791	173,387	170,937	170,359	161,061	165,947	167,632	160,993	171,537	161,332	164,698	166,144
Feb 15 - Jan 16	158,828	182,220	171,173	174,525	170,811	173,642	172,294	170,218	182,607	161,679	186,355	181,477

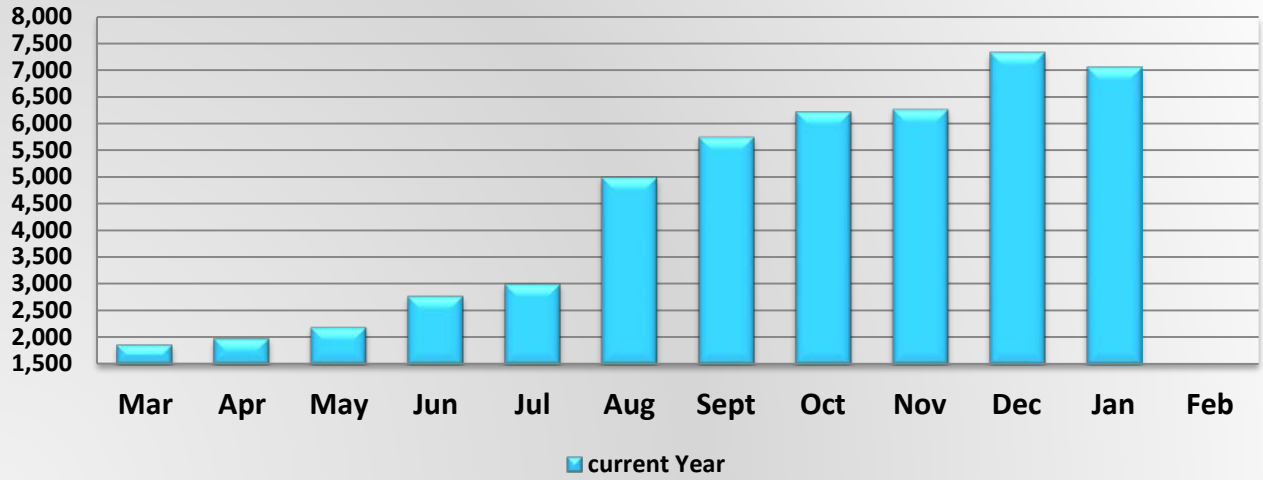
Annual Number of DACS Bypasses



Annual Number of DACS Pullins

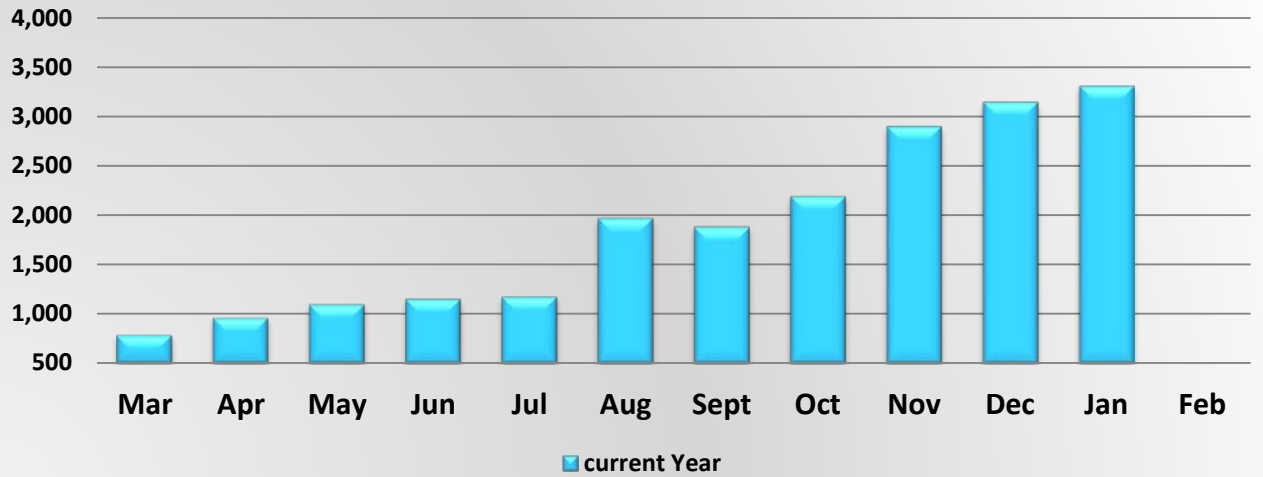


DACS Drivewyze Bypass Activity



DACS Drivewyze Bypass Activity												
	Mar	Apr	May	Jun	Jul	Aug	Sept	Oct	Nov	Dec	Jan	Feb
Mar 15 - Feb 16	1,872	1,992	2,200	2,788	3,017	5,008	5,754	6,227	6,269	7,336	7,062	

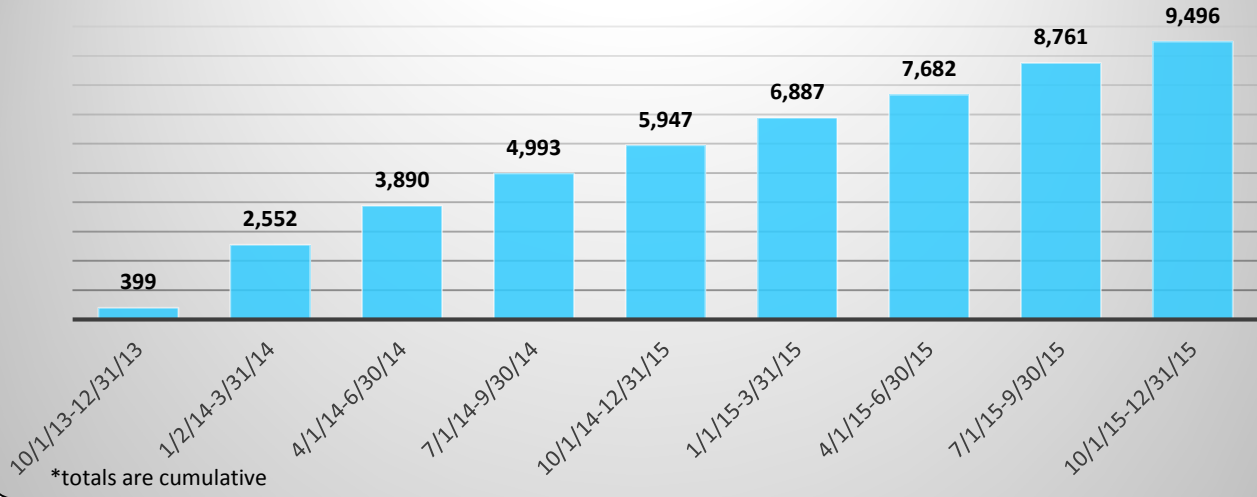
DACS Drivewyze Pull-in Activity



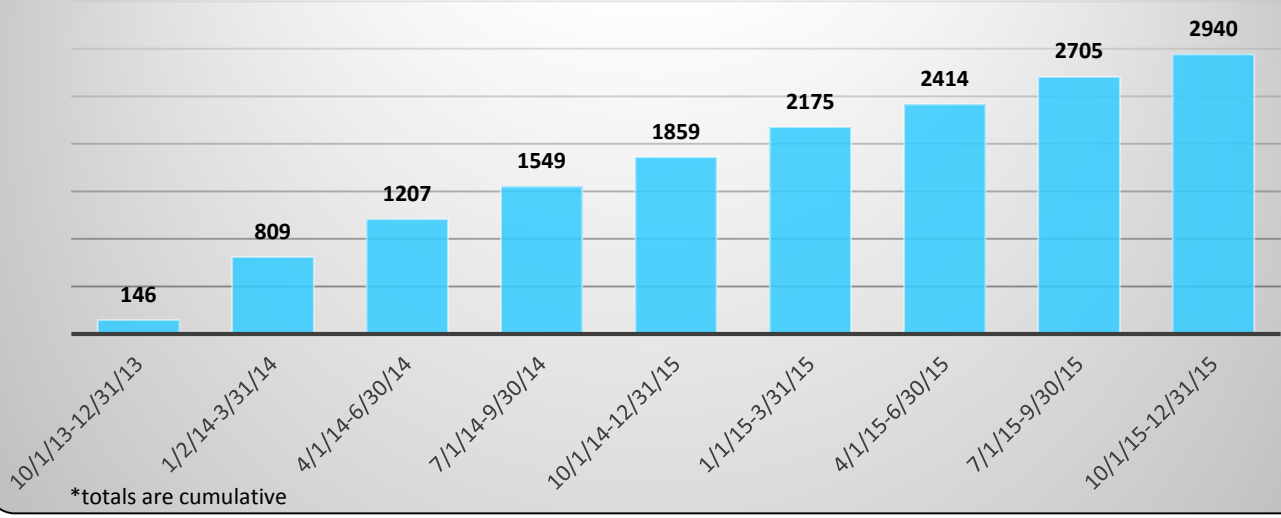
DACS Drivewyze Pull-in Activity												
	Mar	Apr	May	Jun	Jul	Aug	Sept	Oct	Nov	Dec	Jan	Feb
Mar 15 - Feb 16	787	960	1,096	1,153	1,174	1,967	1,881	2,189	2,899	3,145	3,309	

Permit Application Stats

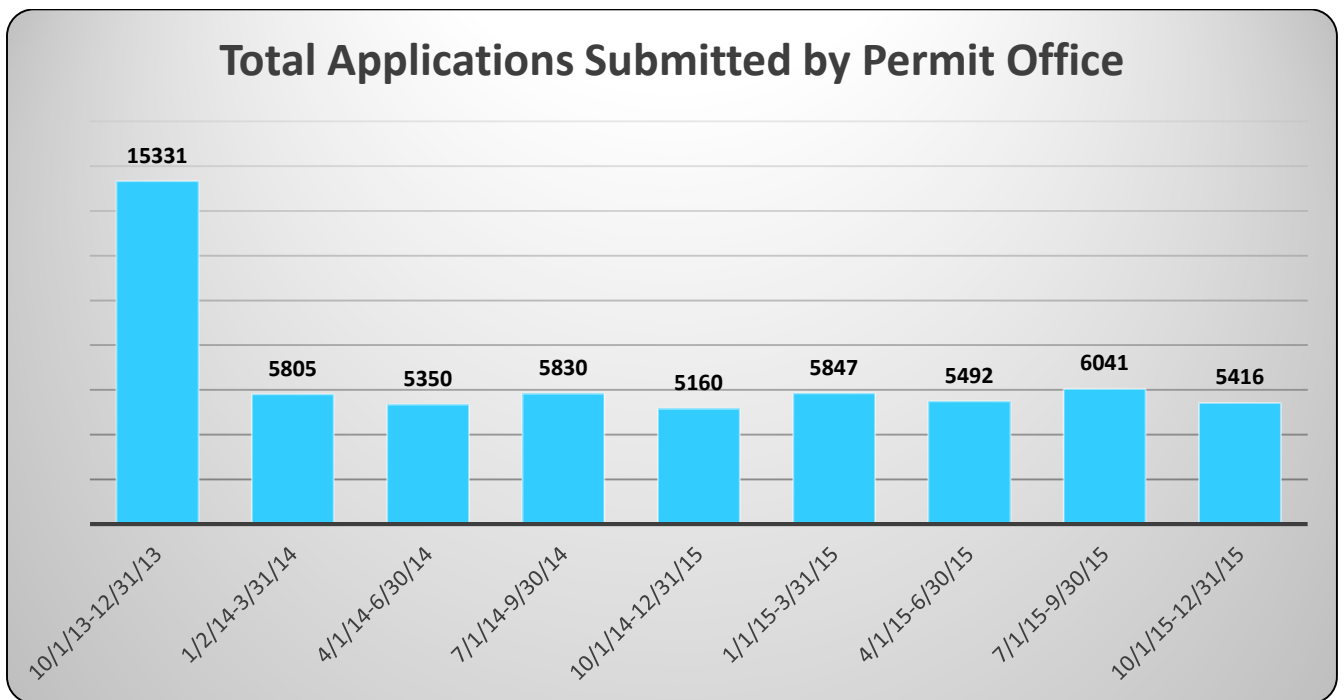
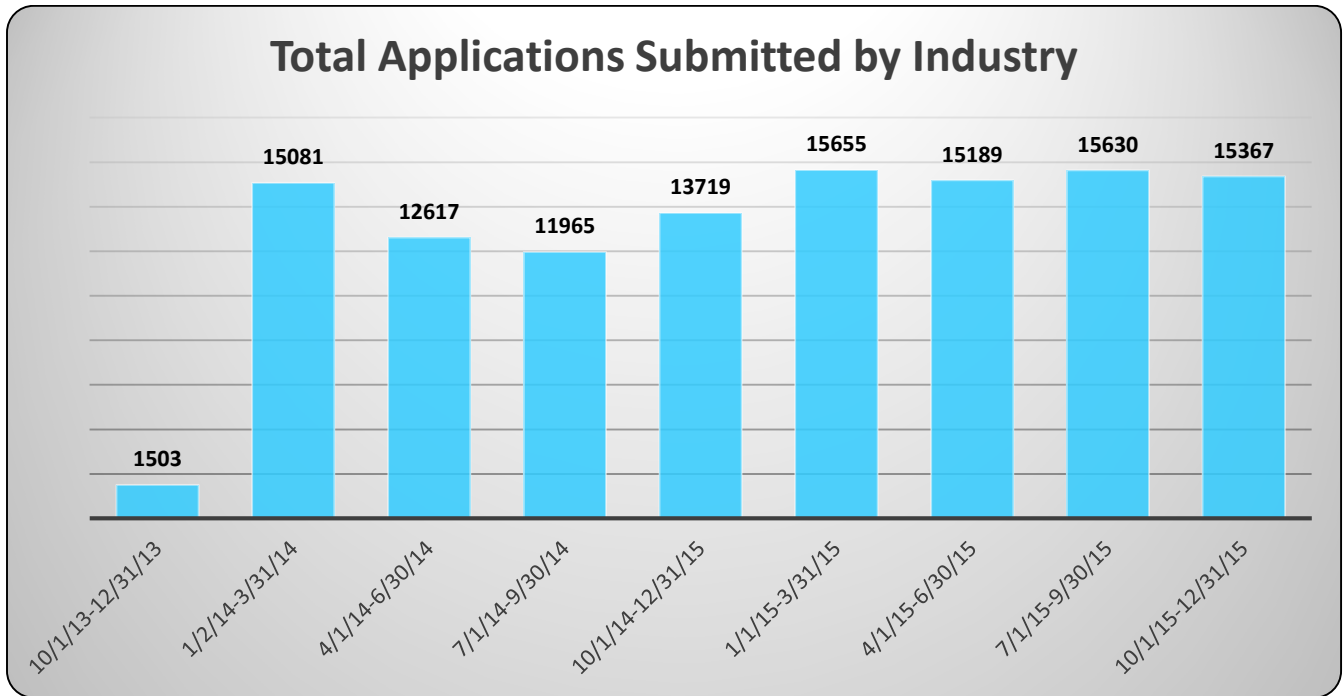
Total Number of Registered ISA Users



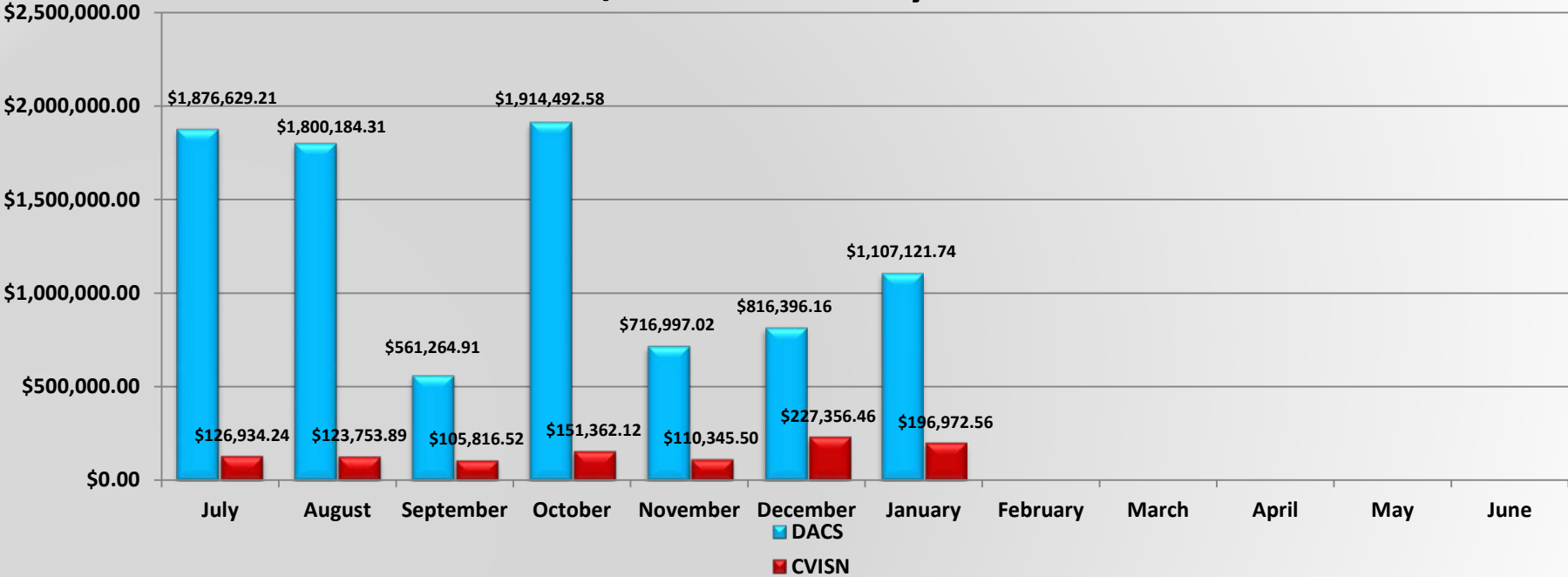
Total Number of Account Profiles



Permit Application Stats (con't)



DACS/CVISN Recovery 2014-2015



DACS/CVISN Recovery Fiscal Year Comparison

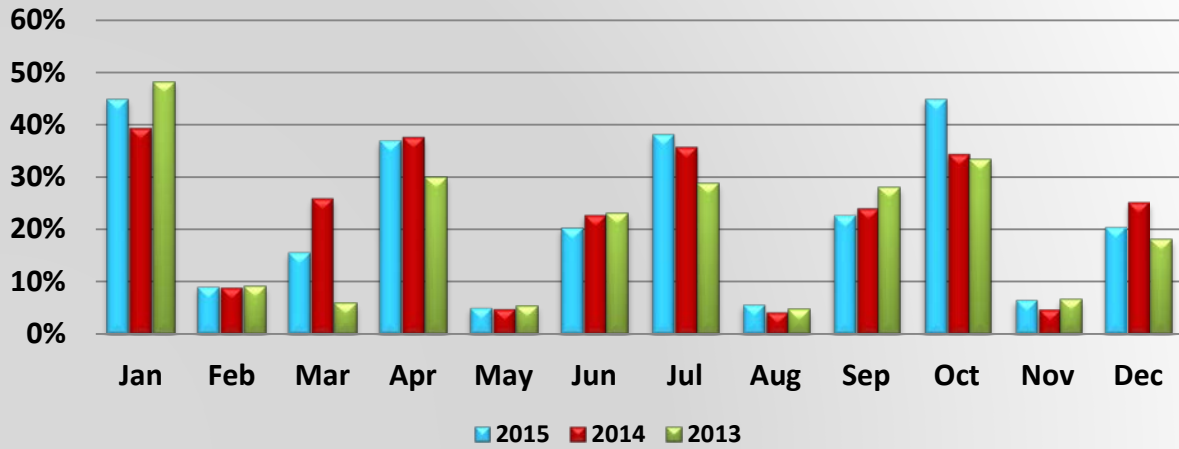


Number of New CVISN Accounts at DHSMV



Total Number of New CVISN Accounts													
	Jan	Feb	Mar	Apr	May	Jun	Jul	Aug	Sep	Oct	Nov	Dec	Yearly Total
2006	0	0	0	0	0	0	0	0	17	35	11	5	68
2007	12	10	11	251	224	26	34	30	63	45	56	87	849
2008	39	266	30	37	25	35	35	52	112	165	72	64	932
2009	69	75	65	88	81	426	149	119	129	125	95	169	1590
2010	77	153	273	382	202	205	234	256	304	347	346	364	3143
2011	295	278	388	177	114	170	194	208	309	233	204	234	2804
2012	356	313	295	256	345	281	300	279	238	544	235	248	3690
2013	469	374	406	402	383	390	452	376	410	683	753	887	5985
2014	779	632	577	415	373	612	509	420	478	395	661	633	6484
2015	489	480	631	403	398	519	425	430	249	389	446	494	5353

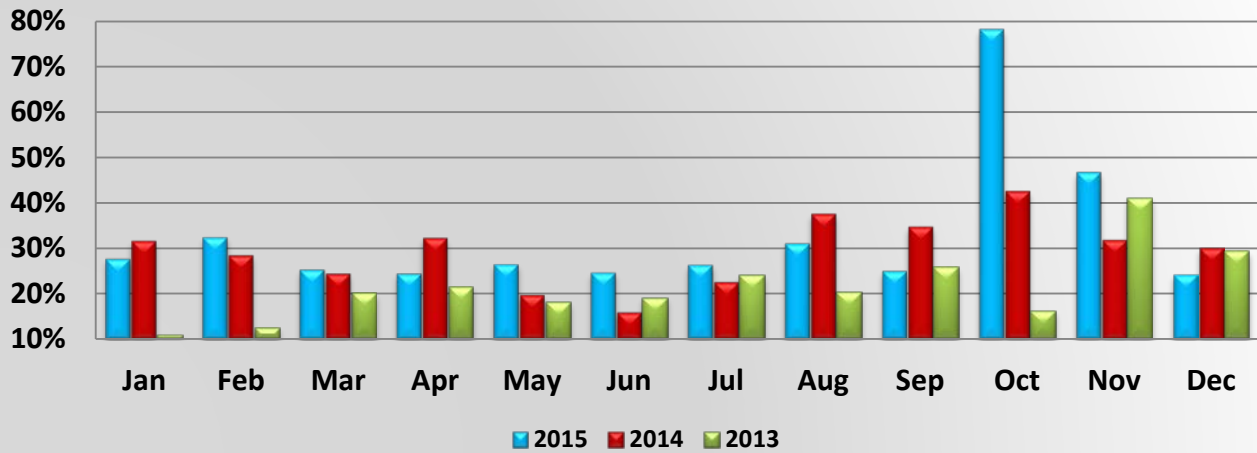
Percent of Total IFTA Tax Returns



Percent of Total IFTA Tax Returns

	Jan	Feb	Mar	Apr	May	Jun	Jul	Aug	Sep	Oct	Nov	Dec	Year End
2015	44.850%	9.106%	15.733%	36.9372%	5.093%	20.457%	38.151%	5.664%	22.679%	44.876%	6.581%	20.533%	21.043%
2014	39.368%	8.9%	25.964%	37.635%	4.805%	22.782%	35.733%	4.188%	24.023%	34.415%	4.781%	25.192%	20.696%
2013	48.185%	9.122%	5.857%	30.017%	5.367%	23.142%	28.806%	4.579%	27.965%	33.359%	6.602	18.038%	17.822%

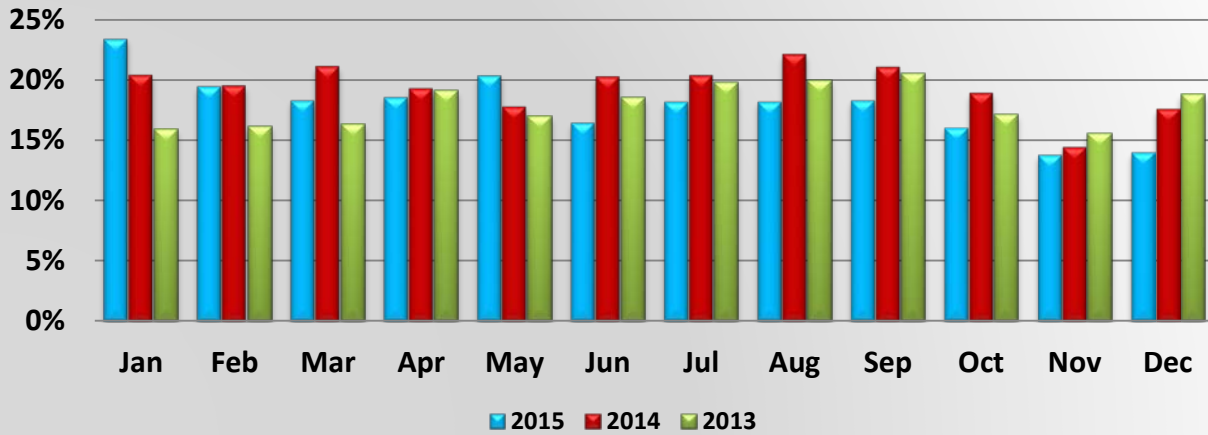
Percent of Total IFTA Decals Issued



Percent of Total IFTA Decals Issued

	Jan	Feb	Mar	Apr	May	Jun	Jul	Aug	Sep	Oct	Nov	Dec	Year End
2015	27.739%	32.422%	25.325%	24.442%	26.502%	24.711%	26.388%	31.083%	25.000%	78.151%	46.745%	24.248%	34.603%
2014	31.573%	28.433%	24.386%	32.205%	19.715%	15.948%	22.590%	37.49%	34.684%	42.498%	31.802%	30.027%	31.365%
2013	10.848%	12.465%	20.043%	21.497%	18.017%	19.105%	23.945%	20.212%	25.695%	16.208%	41.063%	29.335%	24.086%

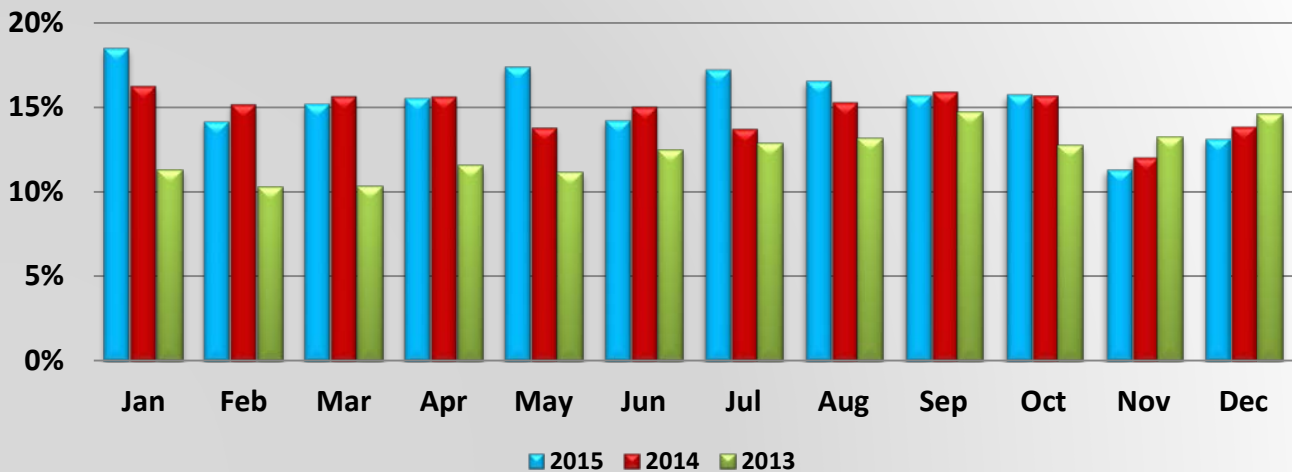
Percent of Total IRP Supplements Billed thru the web



Percent of Total IRP Supplements Billed thru the web

	Jan	Feb	Mar	Apr	May	Jun	Jul	Aug	Sep	Oct	Nov	Dec	Year End
2015	23.391%	19.471%	18.301%	18.571%	20.362%	16.428%	18.182%	18.202%	18.291%	16.035%	13.784%	13.999%	18.198%
2014	20.411%	19.530%	21.104%	19.285%	17.774%	20.263%	20.373%	22.120%	21.067%	18.905%	14.425%	17.568%	19.669%
2013	15.910%	16.166%	16.339%	19.154%	16.990%	18.553%	19.804%	19.991%	20.540%	17.117%	15.567%	18.780%	17.950%

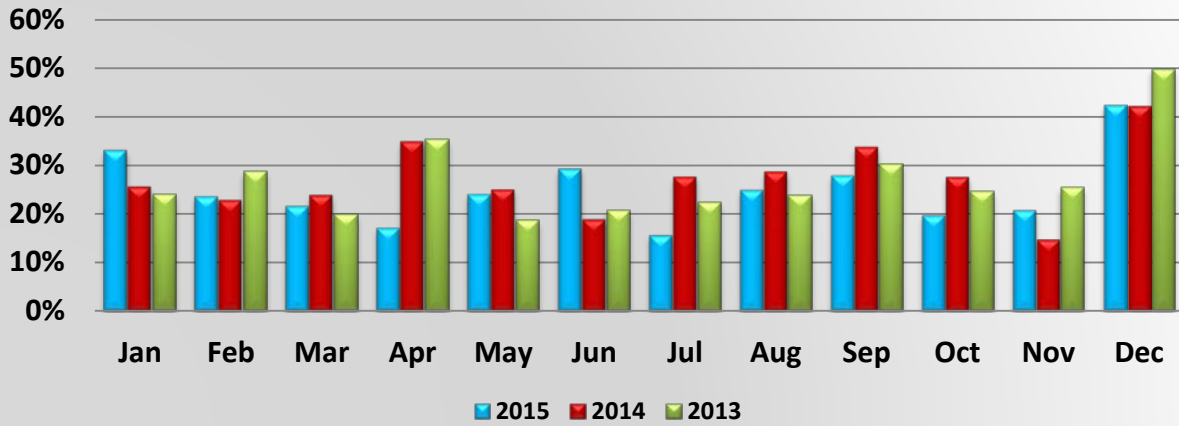
Percent of Total IRP Supplements paid thru the web



Percent of Total IRP Supplements paid thru the web

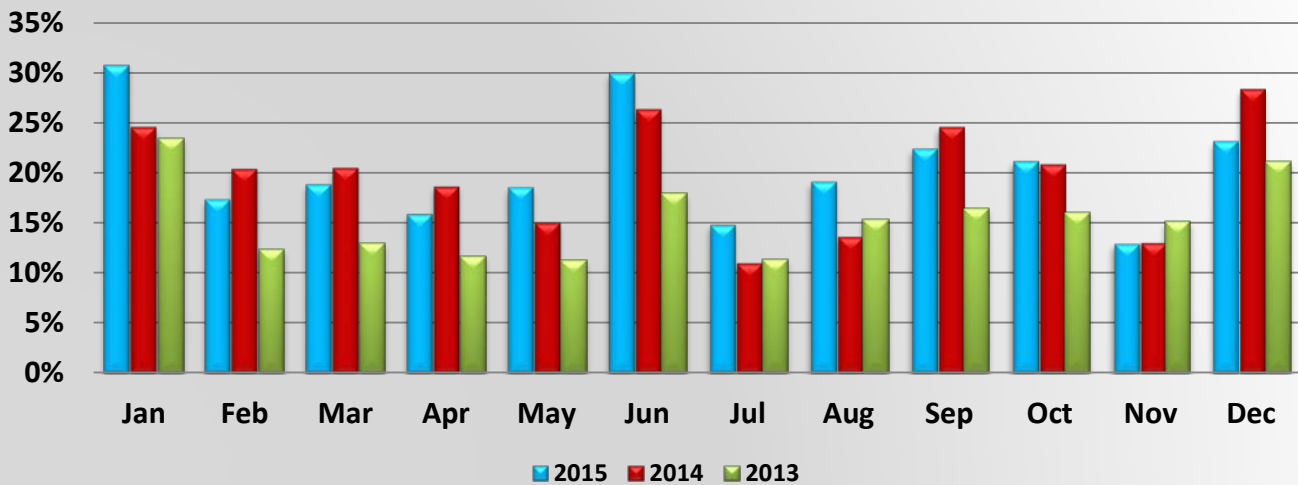
	Jan	Feb	Mar	Apr	May	Jun	Jul	Aug	Sep	Oct	Nov	Dec	Year End
2015	18.484%	14.157%	15.196%	15.542%	17.393%	14.230%	17.214%	16.557%	15.704%	15.758%	11.339%	13.132%	15.632%
2014	16.286%	15.201%	15.687%	15.660%	13.822%	15.052%	13.746%	15.321%	15.941%	15.711%	12.062%	13.888%	15.033%
2013	11.273%	10.294%	10.311%	11.553%	11.131%	12.482%	12.908%	13.151%	14.691%	12.749%	13.242%	14.600%	12.216%

Percent of Total IRP Registrations billed thru the web



Percent of Total IRP Registrations billed thru the web													
	Jan	Feb	Mar	Apr	May	Jun	Jul	Aug	Sep	Oct	Nov	Dec	Year End
2015	33.140%	23.644%	21.663%	17.179%	24.119%	29.313%	15.644%	24.983%	27.944%	19.770%	20.817%	42.405%	24.535%
2014	25.556%	22.939%	24.273%	34.583%	25.041%	19.094%	29.588%	28.711%	33.829%	27.588%	14.83%	42.19%	27.526%
2013	23.980%	28.774%	19.883%	35.324%	18.700%	20.645%	22.479%	23.873%	30.301%	24.568%	25.387%	49.882%	25.953%

Percent of Total IRP Registrations paid thru the web



Percent of Total IRP Registrations paid thru the web													
	Jan	Feb	Mar	Apr	May	Jun	Jul	Aug	Sep	Oct	Nov	Dec	Year End
2015	30.780%	17.348%	18.842%	15.865%	18.571%	29.954%	14.841%	19.095%	22.420%	21.143%	12.970%	23.177%	21.046%
2014	24.517%	20.365%	20.448%	18.585%	15.004%	26.287%	11.019%	13.658%	24.533%	20.814%	13.051%	28.298%	19.680%
2013	23.493%	12.356%	12.898%	11.666%	11.245%	17.905%	11.341%	15.383%	16.443%	16.012%	15.134%	21.134%	15.264%