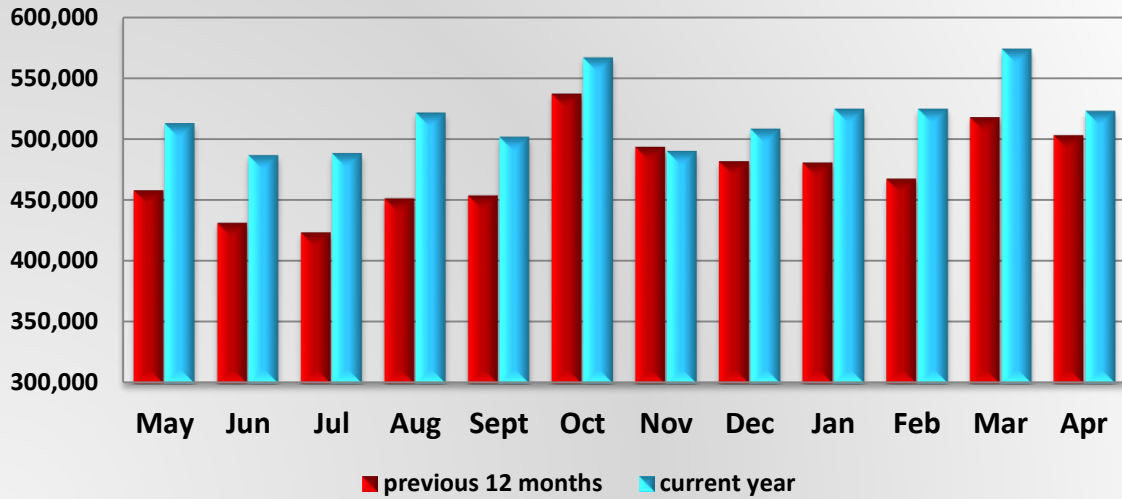
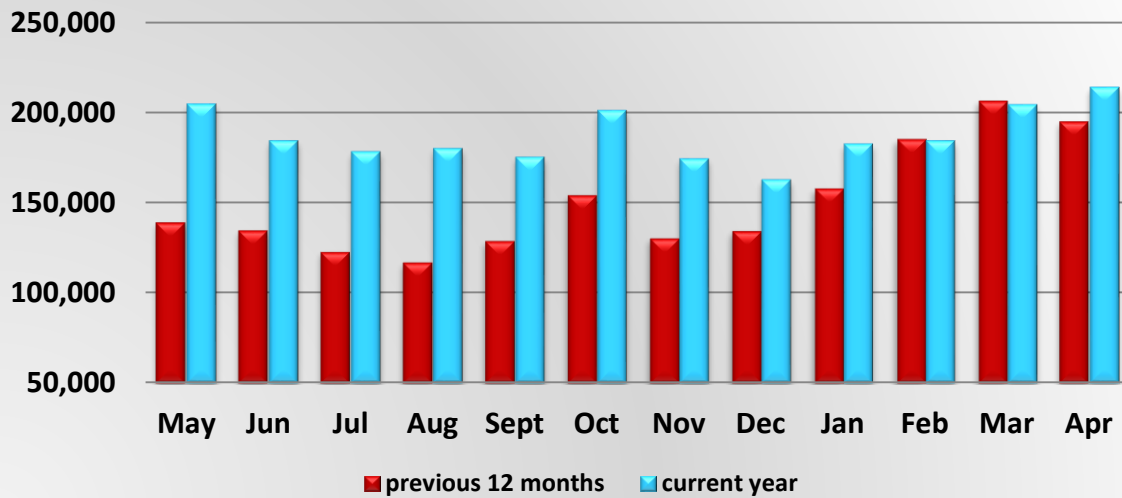


MCSAW Prepass Bypass Activity



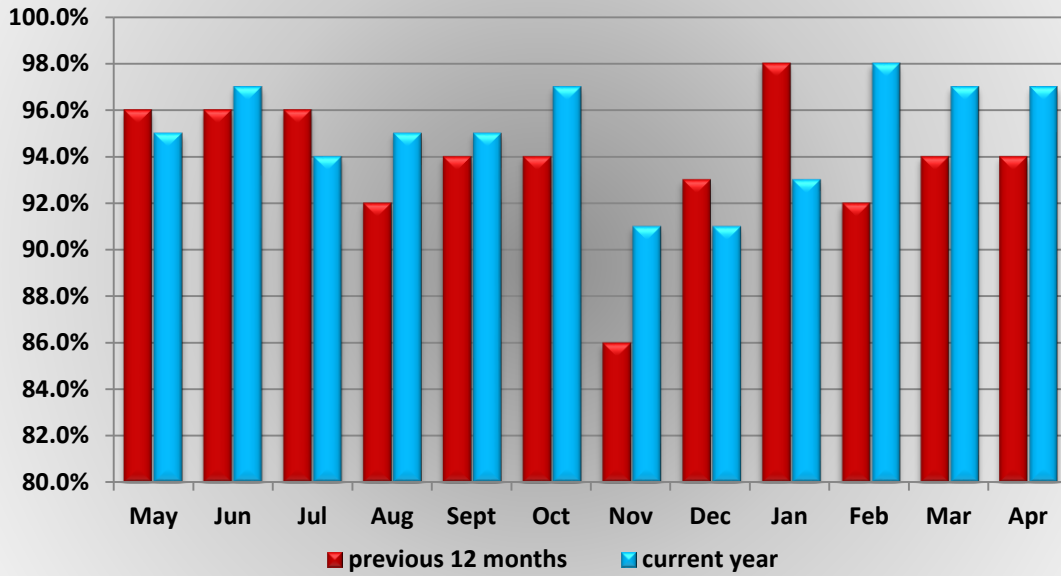
MCSAW Prepass Bypass Activity												
	May	Jun	Jul	Aug	Sept	Oct	Nov	Dec	Jan	Feb	Mar	Apr
May 12 - Apr 13	458,436	431,981	423,953	451,909	454,295	537,351	494,032	482,138	481,110	468,032	518,283	503,421
May 13 - Apr 14	512,925	486,938	488,481	521,777	501,856	566,823	490,243	508,527	524,872	524,735	573,786	522,930

MCSAW PrePass Pull-in Activity



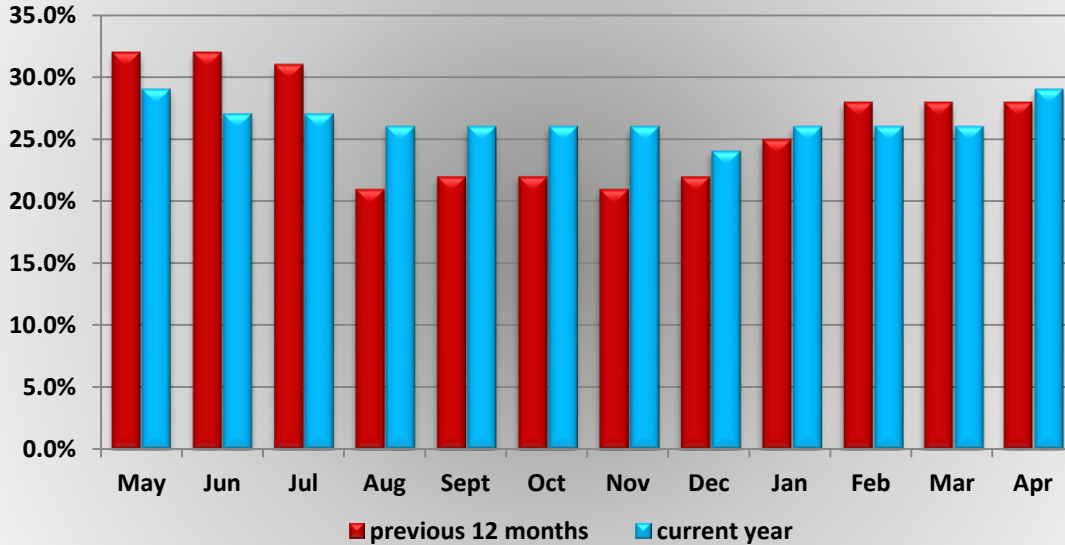
MCSAW PrePass Pull-in Activity												
	May	Jun	Jul	Aug	Sept	Oct	Nov	Dec	Jan	Feb	Mar	Apr
May 12 - Apr 13	139,364	134,974	123,015	117,066	129,105	154,280	130,476	134,601	158,085	185,311	206,531	195,048
May 13 - Apr 14	204,885	184,494	178,569	180,271	175,445	201,384	174,666	162,986	182,869	184,484	204,522	214,147

MCSAW Bypass Open Percentage



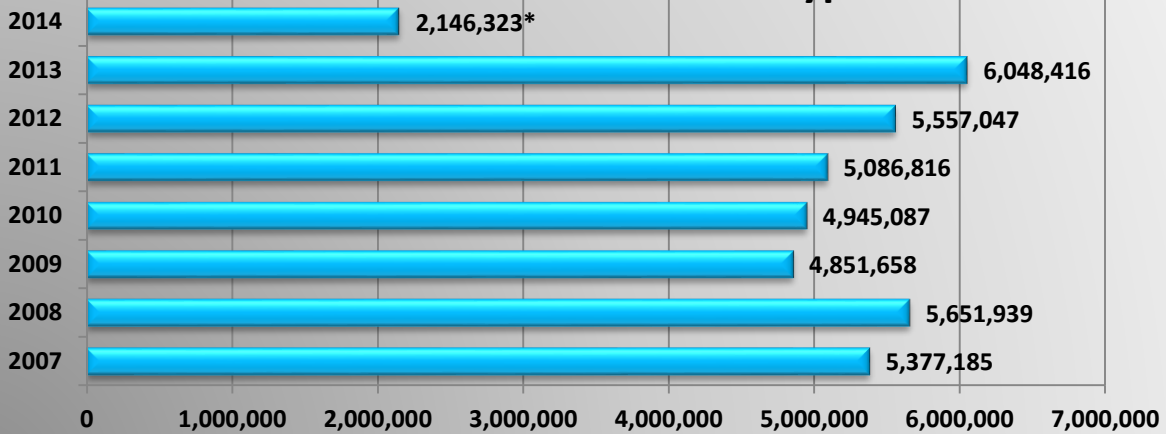
MCSAW Bypass Open Percentage												
	May	Jun	Jul	Aug	Sept	Oct	Nov	Dec	Jan	Feb	Mar	Apr
May 12 - Apr 13	92.0%	94.0%	94.0%	86.0%	93.0%	98.0%	92.0%	94.0%	94.0%	96.0%	98.0%	97.0%
May 13 - Apr 14	95.0%	97.0%	94.0%	95.0%	95.0%	97.0%	91.0%	91.0%	93.0%	98.0%	97.0%	97.0%

MCSAW Pull-in Percentage



MCSAW Pull-in Percentage												
	May	Jun	Jul	Aug	Sept	Oct	Nov	Dec	Jan	Feb	Mar	Apr
May 12 - Apr 13	32.0%	32.0%	31.0%	21.0%	22.0%	22.0%	21.0%	22.0%	25.0%	28.0%	28.0%	28.0%
May 13 - Apr 14	29.0%	27.0%	27.0%	26.0%	26.0%	26.0%	26.0%	24.0%	26.0%	26.0%	26.0%	29.0%

MCSAW Annual Number of Bypasses

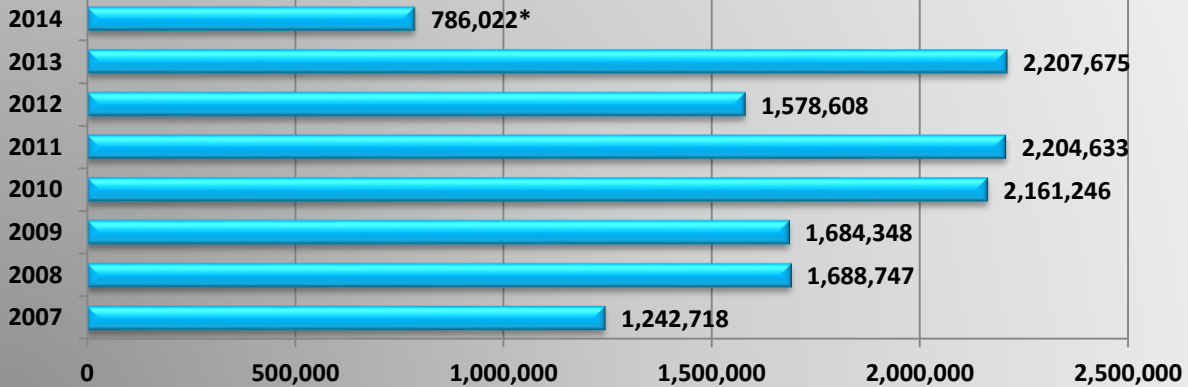


* as of 4/2014

MCSAW Pull-in Percentage

	Jan	Feb	Mar	Apr	May	Jun	Jul	Aug	Sept	Oct	Nov	Dec	Annual Total
2014	524,872	524,735	573,786	522,930									2,146,323
2013	481,110	468,032	518,283	503,421	512,925	486,938	488,481	521,777	501,856	566,823	490,243	508,527	6,048,416
2012	424,196	456,051	483,690	459,015	458,436	431,981	423,953	451,909	454,295	537,351	494,032	482,138	5,557,047
2011	411,467	425,841	468,434	407,752	397,792	415,044	397,423	453,237	403,656	443,104	432,560	430,506	5,086,816
2010	361,417	408,853	468,558	432,933	426,150	404,527	380,849	433,326	388,358	440,847	386,897	412,372	4,945,087
2009	411,421	420,864	469,064	449,240	431,090	413,693	415,841	403,031	363,993	401,315	340,588	331,518	4,851,658
2008	489,394	484,542	532,791	525,044	490,390	457,809	455,435	459,515	456,681	475,878	403,221	421,239	5,651,939
2007	434,899	397,084	434,543	430,912	486,536	425,364	419,389	467,265	447,173	527,342	453,986	452,692	5,377,185

MCSAW Annual Number of Pull-ins

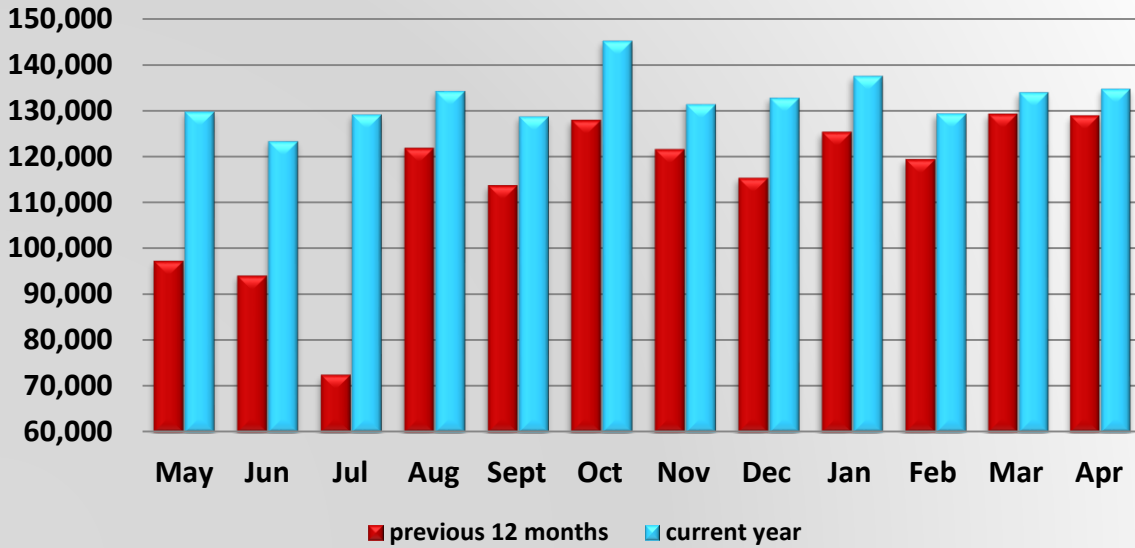


* as of 4/2014

MCSAW Pull-in Percentage

	Jan	Feb	Mar	Apr	May	Jun	Jul	Aug	Sept	Oct	Nov	Dec	Annual Total
2014	182,869	184,484	204,522	214,147									786,022
2013	158,085	185,311	206,531	195,048	204,885	184,494	178,569	180,271	175,445	201,384	174,666	162,986	2,207,675
2012	129,843	121,142	141,359	123,383	139,364	134,974	123,015	117,066	129,105	154,280	130,476	134,601	1,578,608
2011	208,712	184,650	216,792	169,025	190,175	193,057	178,712	188,433	192,475	183,362	157,459	141,781	2,204,633
2010	163,055	171,638	193,256	183,865	186,093	188,705	180,795	192,924	167,170	179,350	157,545	196,850	2,161,246
2009	120,236	122,907	120,595	107,865	103,045	129,064	115,358	136,281	211,640	183,764	166,996	166,597	1,684,348
2008	138,519	139,299	142,793	146,229	135,479	152,715	142,529	136,499	142,438	163,563	128,318	120,366	1,688,747
2007	91,735	88,375	92,004	98,699	101,536	117,960	105,135	109,083	100,566	116,166	110,385	111,074	1,242,718

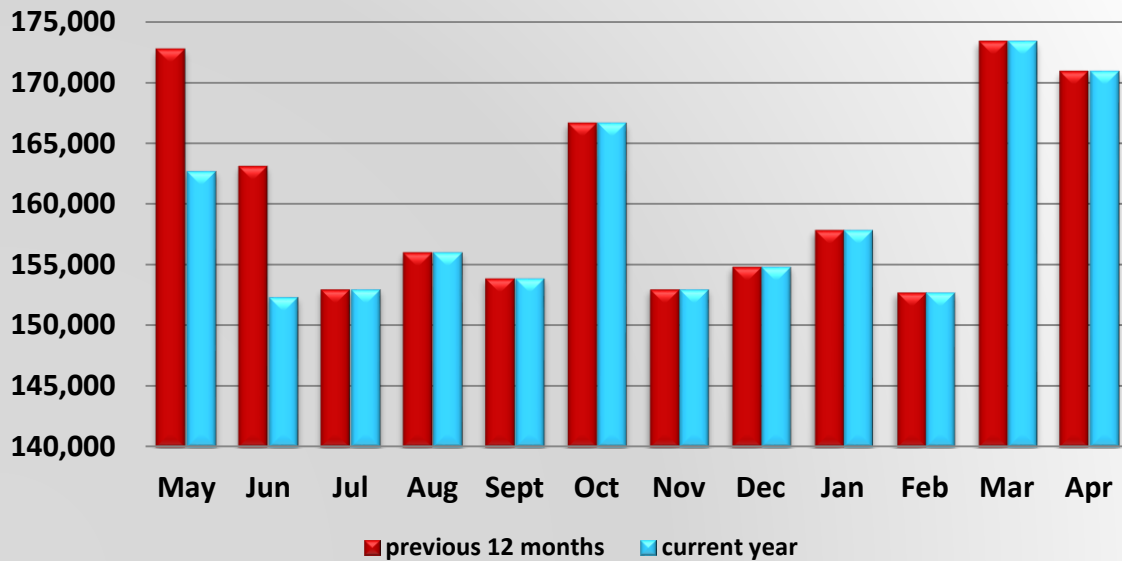
AgPass Bypass Activity at DACS Agricultural Interdiction Stations



DACS Bypass Activity

	May	Jun	Jul	Aug	Sept	Oct	Nov	Dec	Jan	Feb	Mar	Apr
May 12 - Apr 13	97,393	94,157	72,569	121,869	113,762	127,956	121,621	115,424	125,347	119,427	129,325	128,913
May 13 - Apr 14	129,938	123,523	129,262	134,393	128,906	145,286	131,509	132,940	137,685	129,528	134,090	134,905

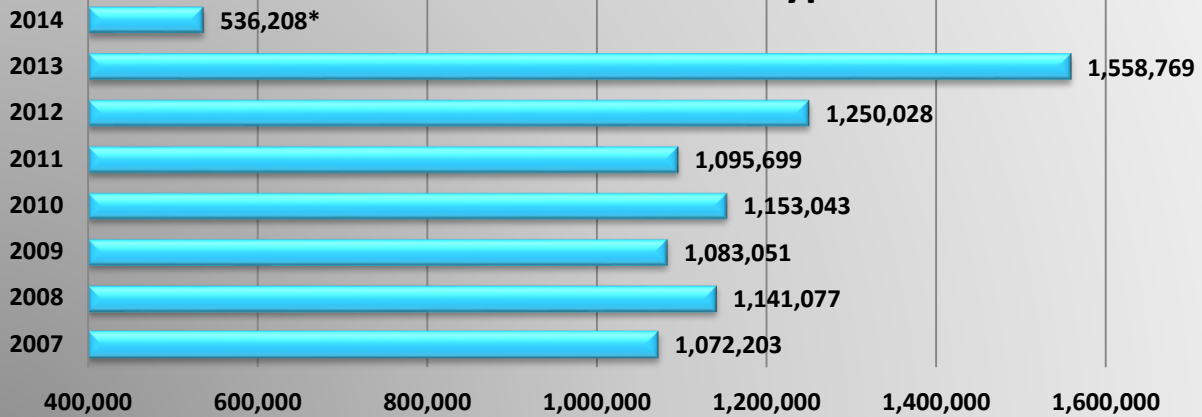
AgPass Pullin Activity at DACS Agricultural Interdiction Stations



DACS Pull-in Activity

	May	Jun	Jul	Aug	Sept	Oct	Nov	Dec	Jan	Feb	Mar	Apr
May 12 - Apr 13	172,769	163,159	135,800	140,553	135,022	152,085	146,999	143,781	160,122	147,237	163,225	159,243
May 13 - Apr 14	162,726	152,414	153,050	156,079	153,937	166,691	153,046	154,902	157,891	152,791	173,387	170,937

Annual Number of DACS Bypasses

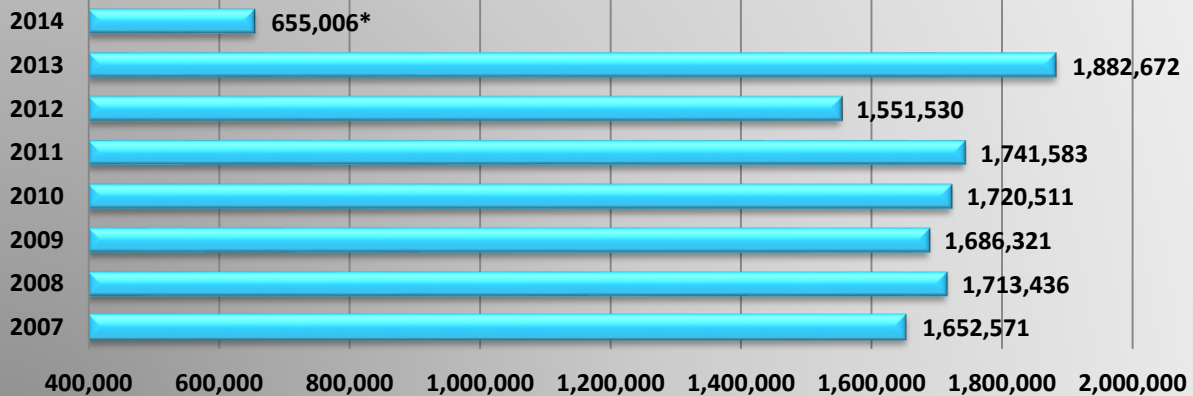


* as of 4/2014

Annual Number of DACS Bypasses

	Jan	Feb	Mar	Apr	May	Jun	Jul	Aug	Sept	Oct	Nov	Dec	Annual Total
2014	137,685	129,528	134,090	134,905									536,208
2013	125,347	119,427	129,325	128,913	129,938	123,523	129,262	134,393	128,906	145,286	131,509	132,940	1,558,769
2012	90,143	93,478	92,337	69,258	92,252	94,754	117,174	121,869	113,762	127,956	121,621	115,424	1,250,028
2011	87,027	100,254	118,092	102,374	97,939	94,157	72,569	79,421	76,843	87,313	90,492	89,218	1,095,699
2010	91,125	87,391	100,842	94,969	101,303	100,963	98,428	89,895	91,337	101,814	105,535	89,441	1,153,043
2009	90,602	86,245	95,185	94,608	87,595	90,735	93,224	91,820	91,337	88,385	84,581	88,734	1,083,051
2008	96,240	93,649	97,911	96,915	98,420	95,559	97,641	92,288	96,633	98,665	88,397	88,759	1,141,077
2007	86,873	84,088	94,972	87,789	90,224	87,433	79,729	95,603	86,997	101,657	90,637	86,201	1,072,203

Annual Number of DACS Pullins

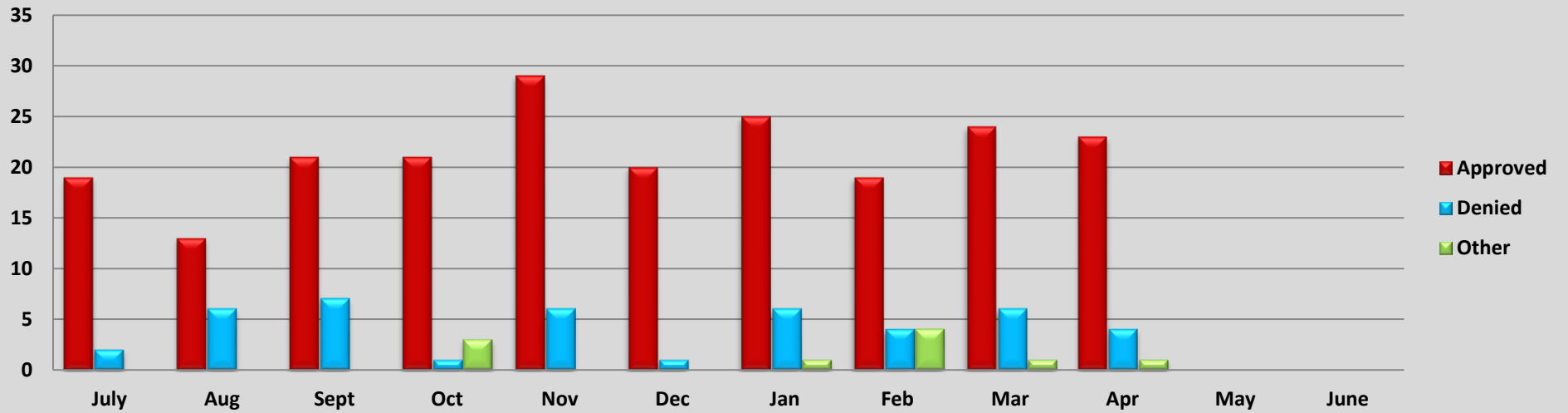


as of 4/2014

Annual Number of DACS Pull-ins

	Jan	Feb	Mar	Apr	May	Jun	Jul	Aug	Sept	Oct	Nov	Dec	Annual Total
2014	157,891	152,791	173,387	170,937									655,006
2013	160,122	147,237	163,225	159,243	162,726	152,414	153,050	156,079	153,937	166,691	153,046	154,902	1,882,672
2012	118,560	118,906	120,054	94,777	123,375	118,655	138,763	140,553	135,022	152,085	146,999	143,781	1,551,530
2011	135,389	150,625	178,508	164,130	172,769	163,159	135,800	143,144	132,353	128,432	120,422	116,852	1,741,583
2010	140,006	134,375	153,339	142,969	158,681	157,905	150,122	142,774	132,861	138,138	133,597	135,744	1,720,511
2009	141,245	133,916	150,454	144,069	139,298	141,052	137,679	136,753	135,172	143,574	138,080	145,029	1,686,321
2008	146,630	141,316	149,368	145,574	147,638	147,834	143,733	135,975	141,134	146,775	131,546	135,913	1,713,436
2007	134,236	121,120	142,237	138,935	142,799	140,674	133,442	145,725	134,935	146,289	138,235	133,944	1,652,571

FY 13-14 AgPass Applications

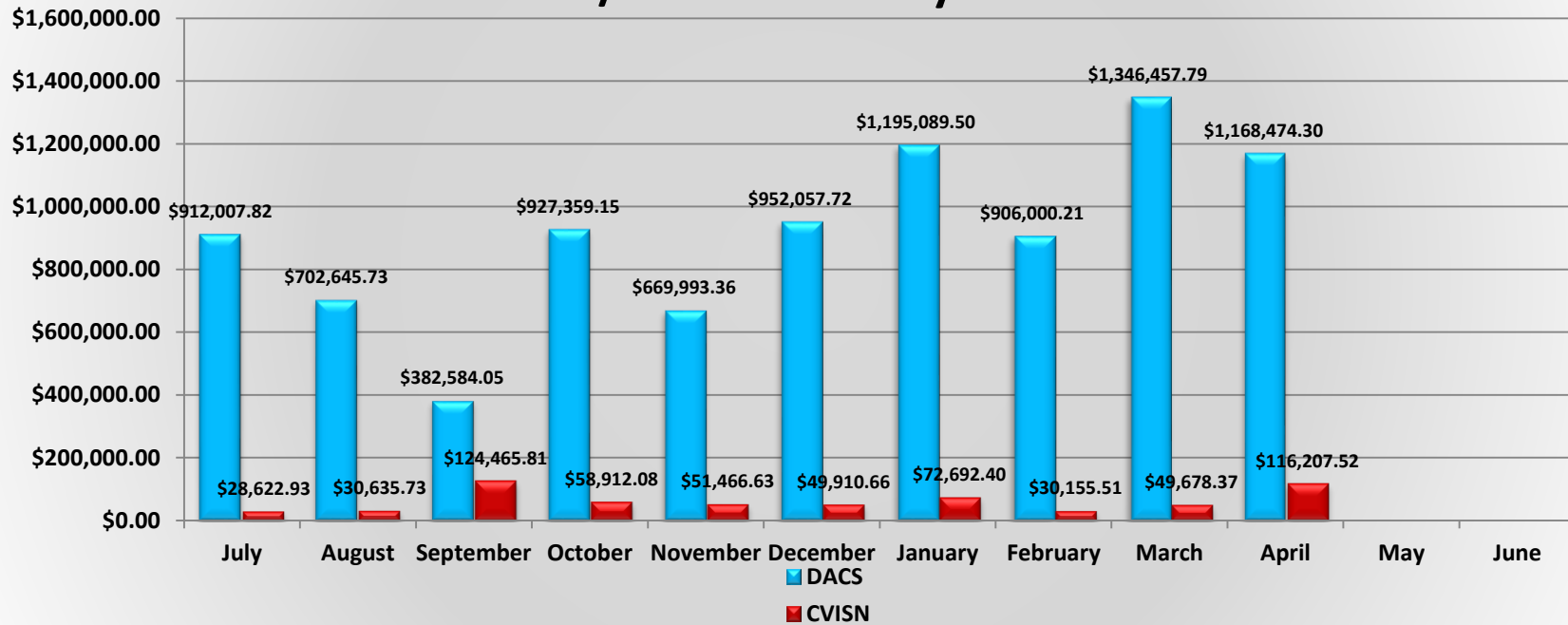


FY 13-14 AgPass Applications													
	July	Aug	Sept	Oct	Nov	Dec	Jan	Feb	Mar	Apr	May	June	Total
Approved	19	13	21	21	29	20	25	19	24	23			214
Denied	2	6	7	1	6	1	6	4	6	4			43
Other	0	0	0	3	0	0	1	4	1	1			10

Total Applications Received for FY: **267**
 Total Number of Approvals for FY: **214**
 Total Number of Denials for FY: **43**
 Total Number of Other for FY: **10**

Total Number of Applications Received Since June 2002 to Date: **5,318**
 Total Number of Approvals Since June 2002 to Date: **3,689**
 Total Number of Denials Since June 2002 to Date: **1,254**
 Total Number of Other since June 2002 to Date: **375**

DACs/CVISN Recovery 2013-2014



	July	August	September	October	November	December	January	February	March	April	May	June
DACS	\$912,007.82	\$702,645.73	\$382,584.05	\$927,359.15	\$669,993.36	\$952,057.72	\$1,195,089.50	\$906,000.21	\$1,346,457.79	\$1,168,474.30		
CVISN	\$28,622.93	\$30,635.73	\$124,465.81	\$58,912.08	\$51,466.63	\$49,910.66	\$72,692.40	\$30,155.51	\$49,678.37	\$116,207.52		
TOTAL	\$940,630.75	\$733,281.46	\$507,049.86	\$986,271.23	\$721,459.99	\$1,001,968.38	\$1,267,781.90	\$936,155.72	\$1,396,136.16	\$1,284,681.82	\$0.00	\$0.00

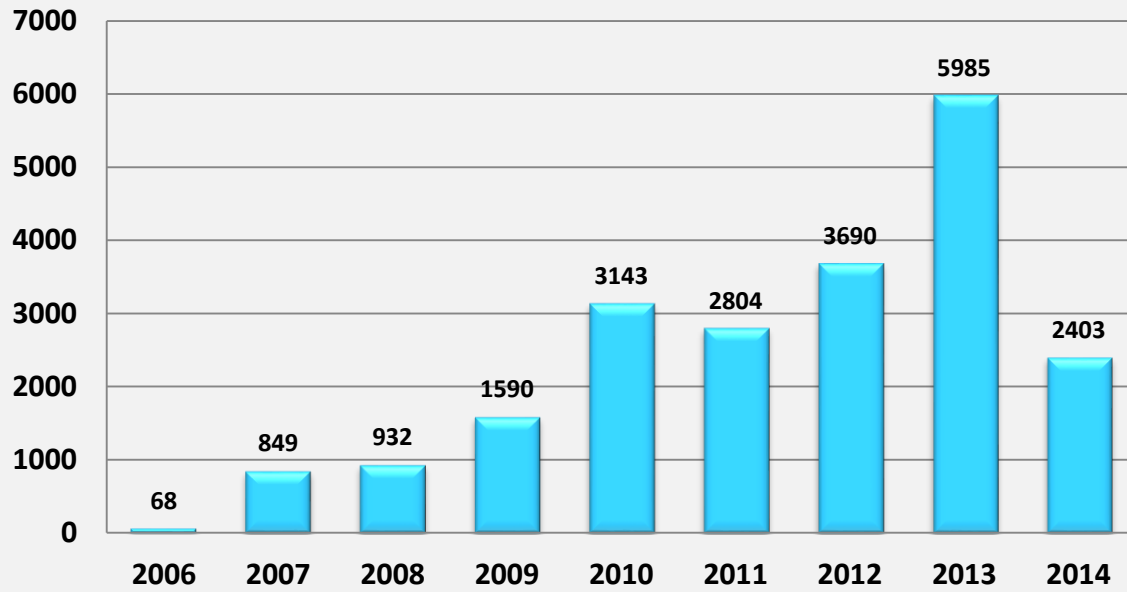
DACs/CVISN Recovery Fiscal Year Comparison



DACs/CVISN Recovery Fiscal Year Comparison

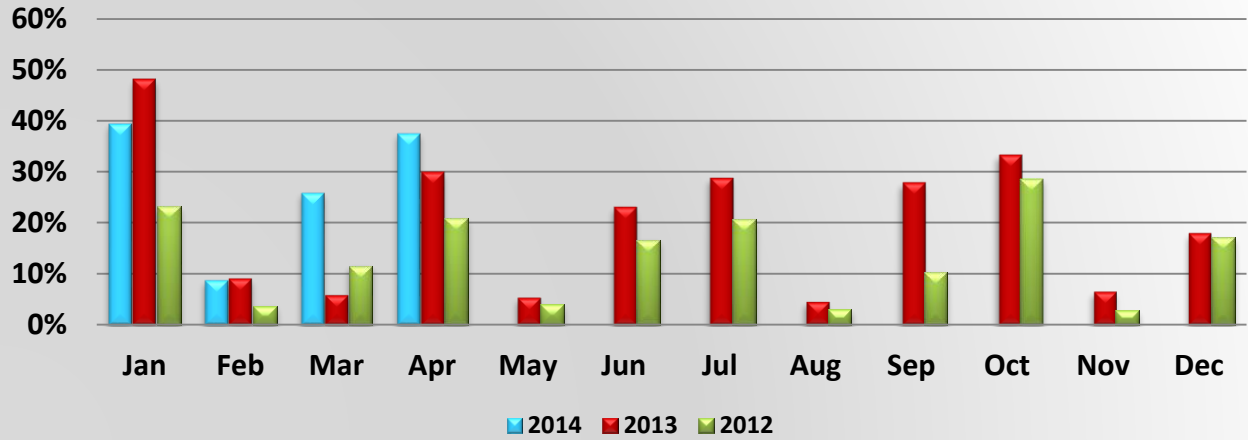
	July	August	September	October	November	December	January	February	March	April	May	June	Total
FY14	\$940,630.75	\$733,281.46	\$507,049.86	\$986,271.23	\$721,459.99	\$1,001,968.38	\$1,267,781.90	\$936,155.72	\$1,396,136.16	\$1,284,671.82			\$9,775,407.27
FY13	\$1,374,205.71	\$704,711.35	\$1,379,079.25	\$552,800.11	\$629,880.76	\$296,437.50	\$605,468.31	\$2,270,548.64	\$2,375,525.78	\$683,800.69	\$85,674.32	\$1,092,589.72	\$12,050,722.14
FY12	\$342,791.47	\$644,854.74	\$324,936.80	\$365,875.32	\$214,115.09	\$524,767.66	\$595,744.55	\$1,161,977.48	\$2,969,689.16	\$1,411,496.60	\$451,715.25	\$548,210.65	\$9,556,174.77
FY11	\$353,433.87	\$760,489.37	\$523,100.55	\$867,595.54	\$410,540.20	\$558,302.03	\$524,465.52	\$382,351.13	\$1,049,620.11	\$584,041.66	\$321,465.40	\$448,558.67	\$6,783,964.05

Number of New CVISN Accounts at DHSMV



Total Number of New CVISN Accounts													
	Jan	Feb	Mar	Apr	May	Jun	Jul	Aug	Sep	Oct	Nov	Dec	Yearly Total
2006	0	0	0	0	0	0	0	0	17	35	11	5	68
2007	12	10	11	251	224	26	34	30	63	45	56	87	849
2008	39	266	30	37	25	35	35	52	112	165	72	64	932
2009	69	75	65	88	81	426	149	119	129	125	95	169	1590
2010	77	153	273	382	202	205	234	256	304	347	346	364	3143
2011	295	278	388	177	114	170	194	208	309	233	204	234	2804
2012	356	313	295	256	345	281	300	279	238	544	235	248	3690
2013	469	374	406	402	383	390	452	376	410	683	753	887	5985
2014	779	632	577	415									2403

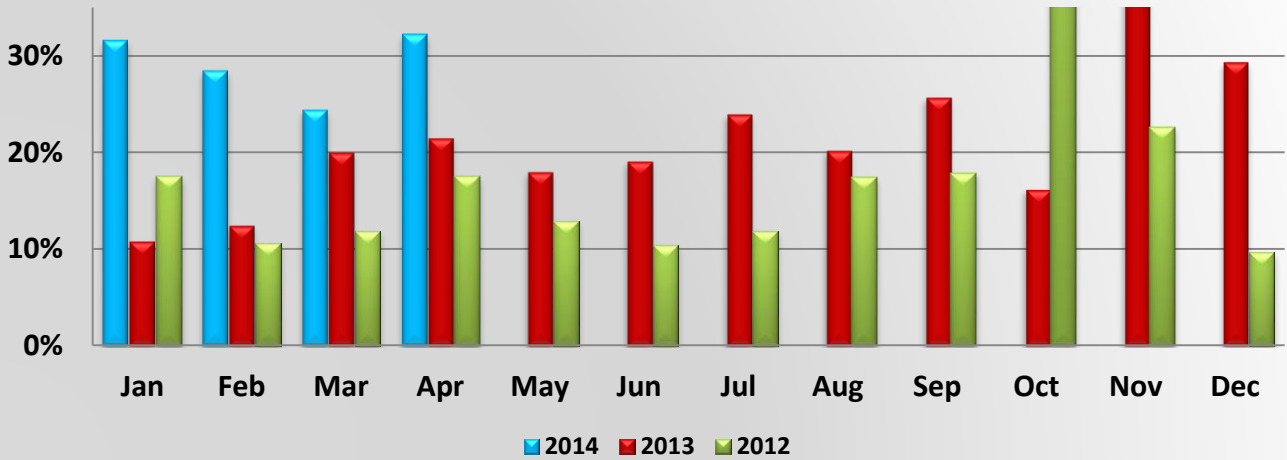
Percent of Total IFTA Tax Returns



Percent of Total IFTA Tax Returns

	Jan	Feb	Mar	Apr	May	Jun	Jul	Aug	Sep	Oct	Nov	Dec	Year End
2014	39.357%	8.825%	25.951%	37.475%									26.919%
2013	48.185%	9.119%	5.855%	29.998%	5.363%	23.142%	28.794%	4.578%	27.943%	33.309%	6.602%	18.038%	17.822%
2012	23.169%	3.626%	11.530%	20.826%	4.018%	16.605%	20.591%	2.972%	10.330%	28.596%	2.744%	17.030%	11.354%

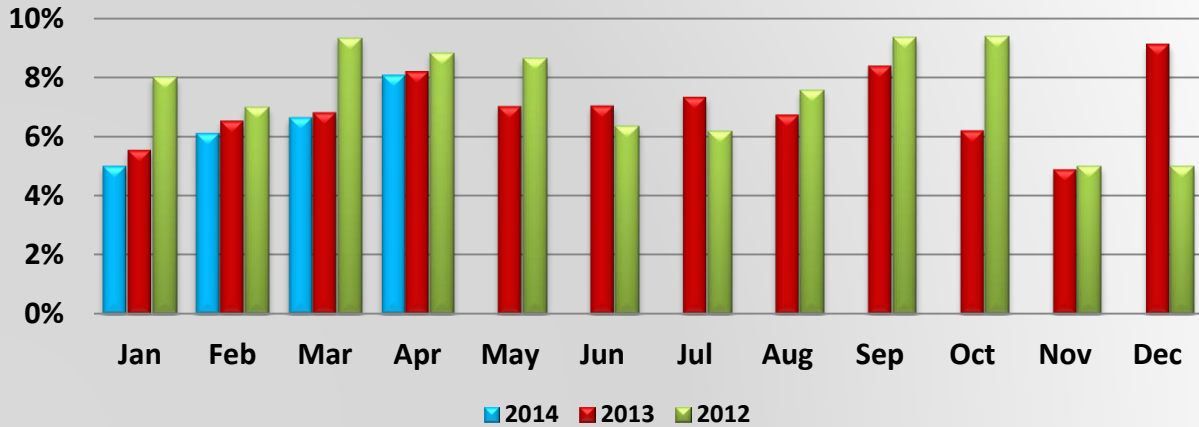
Percent of Total IFTA Decals Issued



Percent of Total IFTA Decals Issued

	Jan	Feb	Mar	Apr	May	Jun	Jul	Aug	Sep	Oct	Nov	Dec	Year End
2014	31.573%	28.433%	24.386%	32.205%									29.651%
2013	10.848%	12.465%	20.043%	21.497%	18.017%	19.105%	23.945%	20.212%	25.695%	16.208%	41.063%	29.335%	24.086%
2012	17.460%	10.542%	11.796%	17.484%	12.882%	10.373%	11.840%	17.450%	17.866%	65.640%	22.642%	9.600%	17.987%

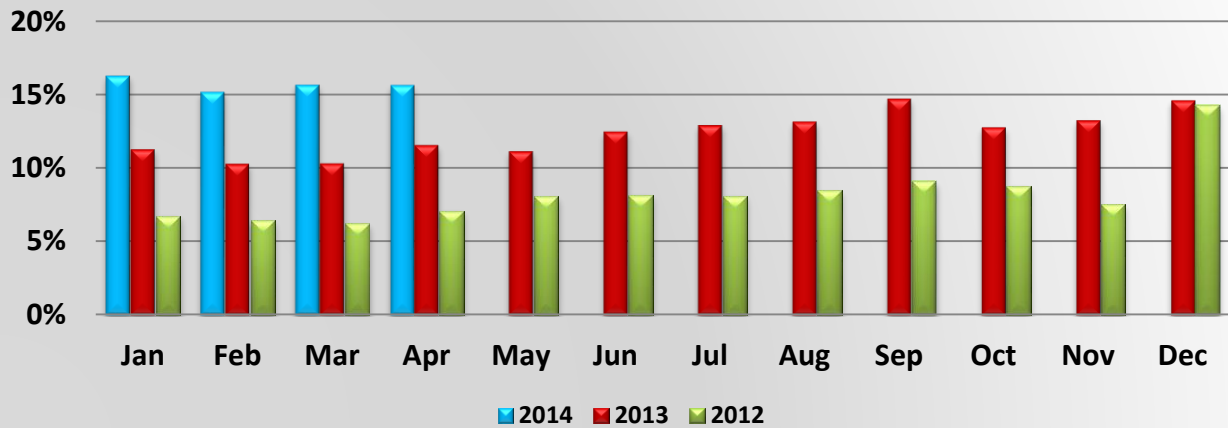
Percent of Total IRP Supplements Billed thru the web



Percent of Total IRP Supplements Billed thru the web

	Jan	Feb	Mar	Apr	May	Jun	Jul	Aug	Sep	Oct	Nov	Dec	Year End
2014	5.004%	6.119%	6.642%	8.076%									6.484%
2013	5.543%	6.529%	6.898%	8.192%	7.059%	7.032%	7.320%	6.700%	8.434%	6.853%	4.891%	9.114%	6.964%
2012	8.015%	6.992%	9.332%	8.836%	8.648%	6.351%	6.163%	7.551%	9.370%	9.393%	4.979%	4.977%	7.769%

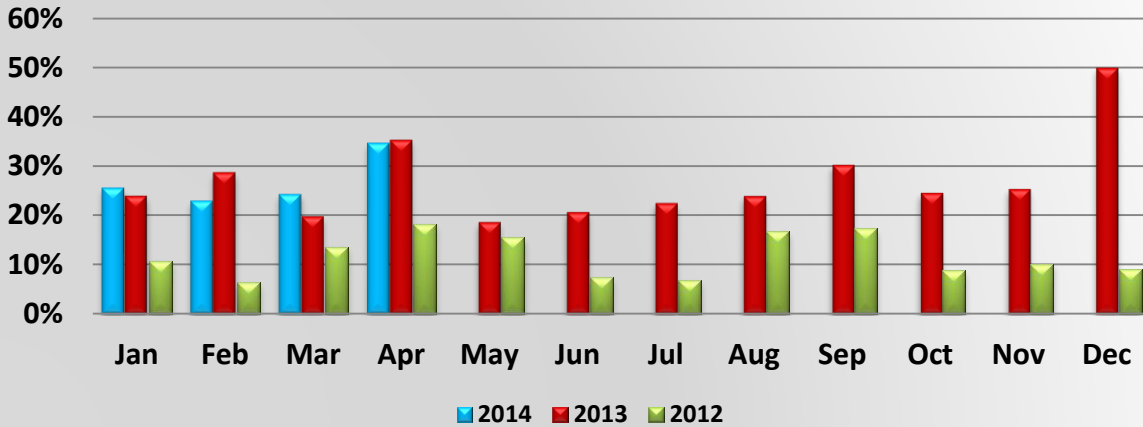
Percent of Total IRP Supplements paid thru the web



Percent of Total IRP Supplements paid thru the web

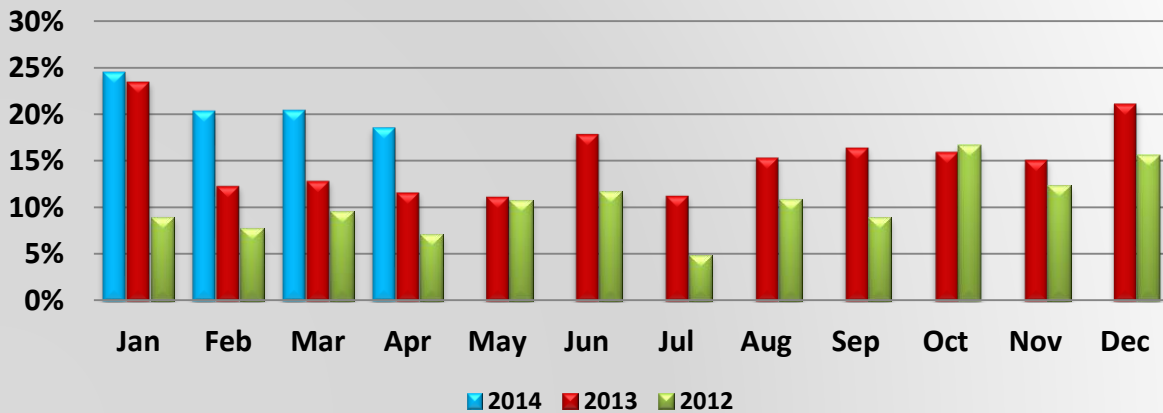
	Jan	Feb	Mar	Apr	May	Jun	Jul	Aug	Sep	Oct	Nov	Dec	Year End
2014	16.286%	15.201%	15.687%	15.660%									15.705%
2013	11.273%	10.294%	10.311%	11.553%	11.131%	12.482%	12.908%	13.151%	14.691%	12.749%	13.242%	14.600%	12.216%
2012	6.706%	6.393%	6.227%	7.072%	8.056%	8.163%	8.085%	8.455%	9.051%	8.763%	7.490%	14.267%	7.906%

Percent of Total IRP Registrations billed thru the web



Percent of Total IRP Registrations billed thru the web													
	Jan	Feb	Mar	Apr	May	Jun	Jul	Aug	Sep	Oct	Nov	Dec	Year End
2014	25.556%	22.939%	24.273%	34.583%									27.016%
2013	23.980%	28.774%	19.883%	35.324%	18.700%	20.645%	22.479%	23.873%	30.301%	24.568%	25.387%	49.882%	25.953%
2012	10.699%	6.235%	13.499%	18.173%	15.528%	7.329%	6.737%	16.700%	17.328%	8.720%	10.069%	8.967%	11.395%

Percent of Total IRP Registrations paid thru the web



Percent of Total IRP Registrations paid thru the web													
	Jan	Feb	Mar	Apr	May	Jun	Jul	Aug	Sep	Oct	Nov	Dec	Year End
2014	24.517%	20.365%	20.448%	18.585%									21.112%
2013	23.493%	12.356%	12.898%	11.666%	11.245%	17.905%	11.341%	15.383%	16.443%	16.012%	15.134%	21.134%	15.264%
2012	8.946%	7.756%	9.534%	7.097%	10.757%	11.714%	4.858%	10.915%	8.888%	16.638%	12.307%	15.586%	10.065%

Permit Application System (PAS)



What's New

- ✓ System Registration
- ✓ Account Profile
- ✓ GIS Routing
- ✓ Attachments Options
- ✓ Self - Issuance of Permits
- ✓ Storage of Permit Applications and Permits
- ✓ Search Engine

PAS STATS

- ✓ Deployed to Permit Office Users August 2013
- ✓ Deployed to Industry December 2013
- ✓ 2,599 Users Registered to use PAS
- ✓ 1,000 Account Profiles set up in PAS
- ✓ 22,137 Applications submitted by Industry
- ✓ 36,523 Applications processed by the Permit Office
- ✓ 64,884 Permits issued using PAS
- ✓ Between 65% and 70% utilization by Industry

THANK YOU
CVISN



CVO Online Portal

Pulaski Skyway

Pulaski Skyway – NJ and NY Long-term Major Construction Project. Click [here](#) for more details.

Watch this video that video provides an overview of the project, with an emphasis on helping motorists learn about travel options once the Pulaski Skyway northbound lanes are closed: <http://youtu.be/MRjXduiVkwY>

Read [NY Times article](#) called 'Drivers in New Jersey to Lose Link as Pulaski Skyway Route Close'.

COMMERCIAL VEHICLE OPERATIONS ONLINE PORTAL

Click on a state for links for Motor Carrier Services (Registration, Regulation, Credentialing), Traveler Information, Truck Parking and Rest Stops, and other information.

- [Connecticut](#) | [Delaware](#) | [Florida](#) | [Georgia](#) | [Maine](#) | [Maryland](#) | [Massachusetts](#) | [Pennsylvania](#) | [New Hampshire](#) | [New Jersey](#) | [New York](#) | [North Carolina](#) | [Rhode Island](#) | [South Carolina](#) | [Vermont](#) | [Virginia](#) | [Washington, DC](#) | [Federal](#)

Maine

- Motor Carrier Services** [View](#)
- Unified Carrier Registration** [View](#)
- IRP Registration** [View](#)
- Fuel Tax** [View](#)
- Permits – OS/OW** [View](#)
- Compliance** [View](#)
- E-ZPass/Electronic Tolling** [View](#)
- Commercial Driver Licensing** [View](#)
- Rest Areas (ME Turnpike)** [View](#)
- Real-Time Traveler/Traffic Information** [View](#)
- Maine Motor Transport Association** [View](#)

[Go to Top](#)

New Hampshire

- IRP Registration** [View](#)
- Unified Carrier Registration** [View](#)
- Oversize Permits** [View](#)
- Commercial Driver Licensing** [View](#)



Browser window showing the I-95 Corridor Coalition website. The address bar displays: <http://i95coalition.org/i95/CommercialVehicleOperationsPortal/tabid/127/Default.asp>

Navigation menu: File Edit View Favorites Tools Help

South Carolina Trucking Association [View](#)

[Go to Top](#)

Georgia

- Motor Carrier Services** [View](#)
- General Information** [View](#)
- Unified Carrier Registration** [View](#)
- Permits - Temporary** [View](#)
- Oversize Permitting** [View](#)
- Compliance** [View](#)
- PeachPass/Electronic Tolling** [View](#)
- Commercial Driver Licensing** [View](#)
- Real-Time Traveler/Traffic Information** [View](#)
- Rest Areas** [View](#)
- Georgia Motor Trucking Association** [View](#)

[Go to Top](#)

Florida

- Motor Carrier Services** [View](#)
- IRP Registration** [View](#)
- Fuel Tax** [View](#)
- Permits – OS/OW** [View](#)
- Weigh Stations** [View](#)
- Compliance** [View](#)
- SunPass/Electronic Tolling** [View](#)
- Commercial Driver Licensing** [View](#)
- Real-Time Traveler/Traffic Information** [View](#)
- Road Construction** [View](#)
- Rest Areas** [View](#)
- Florida Trucking Association** [View](#)

[Go to Top](#)

Federal

- Federal Requirements** [View](#)
- Permits - Special** [View](#)

Copyright 2013 by I-95 Corridor Coalition