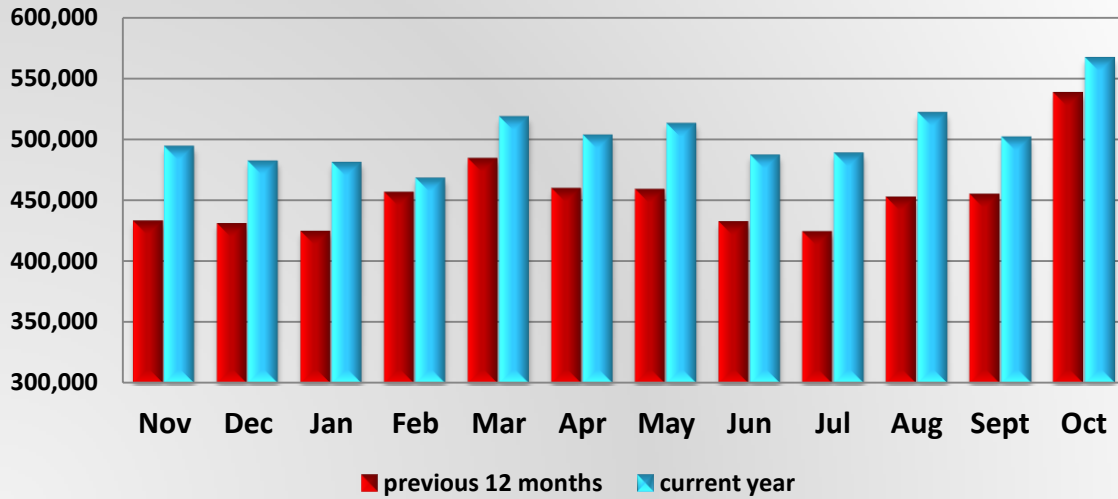
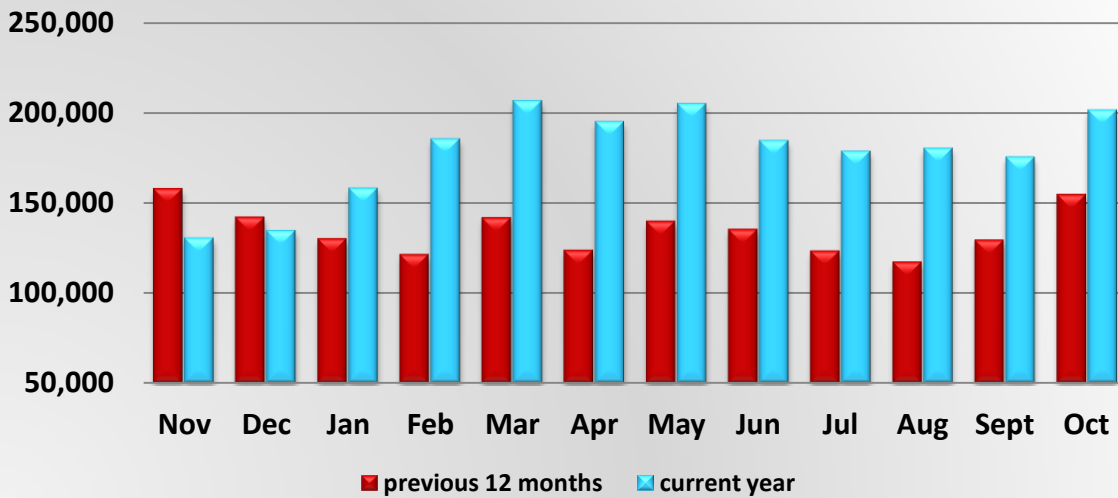


MCSAW Prepass Bypass Activity



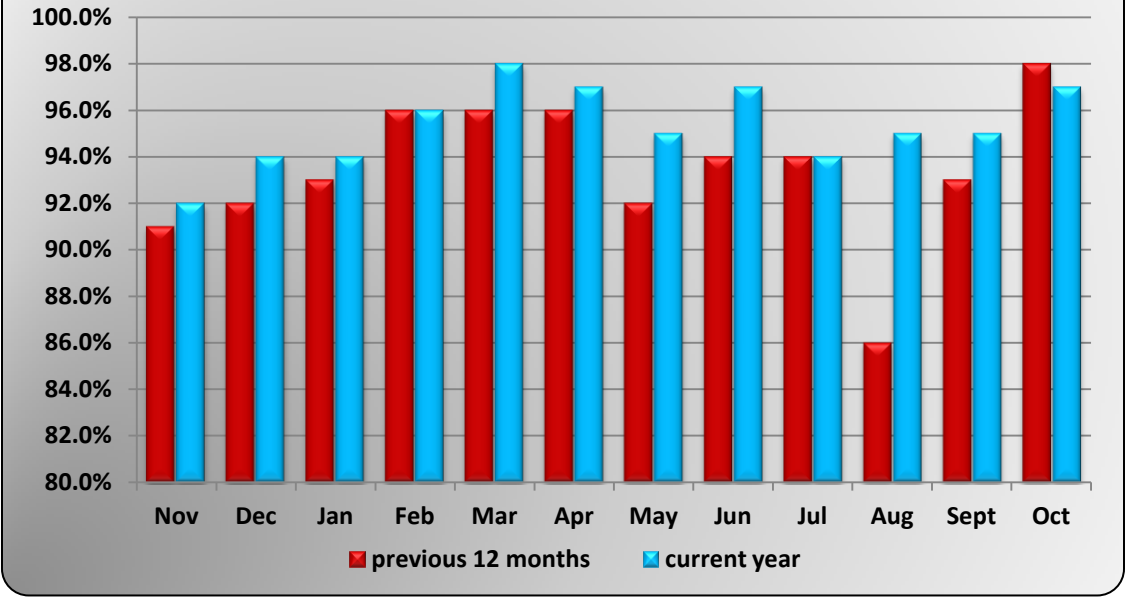
MCSAW PrePass Pull-in Activity												
	Nov	Dec	Jan	Feb	Mar	Apr	May	Jun	Jul	Aug	Sept	Oct
Nov 11 - Oct 12	432,560	430,506	424,196	456,051	483,690	459,015	458,436	431,981	423,953	451,909	454,295	537,351
Nov 12 - Oct 13	494,032	482,138	481,110	468,032	518,283	503,421	512,925	486,938	488,481	521,777	501,856	566,823

MCSAW PrePass Pull-in Activity



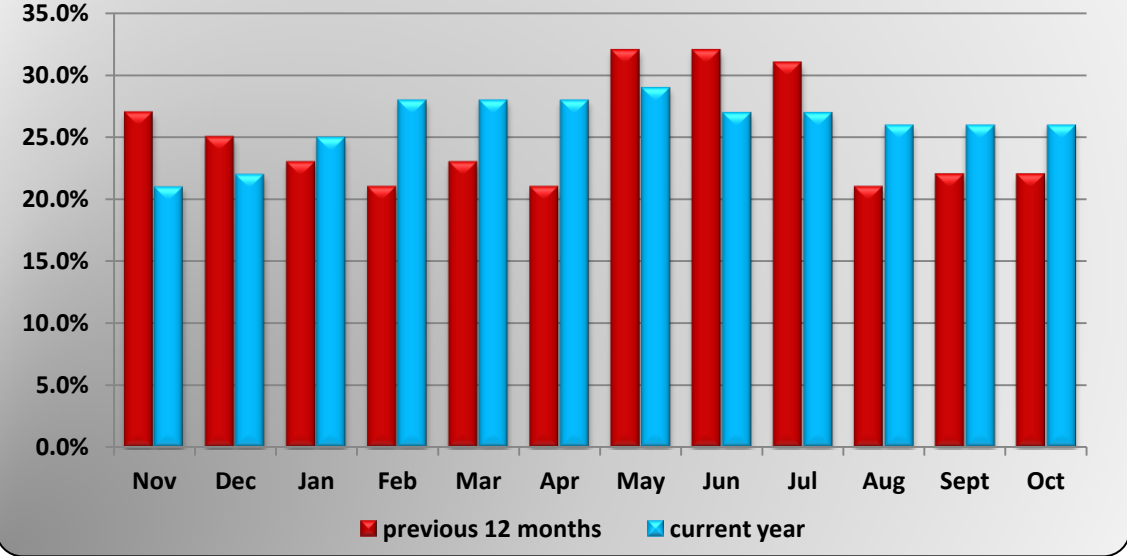
MCSAW PrePass Pull-in Activity												
	Nov	Dec	Jan	Feb	Mar	Apr	May	Jun	Jul	Aug	Sept	Oct
Nov 11 - Oct 12	157,459	141,781	129,843	121,142	141,359	123,383	139,364	134,974	123,015	117,066	129,105	154,280
Nov 12 - Oct 13	130,476	134,601	158,085	185,311	206,531	195,048	204,885	184,494	178,569	180,271	175,445	201,384

MCSAW Bypass Open Percentage



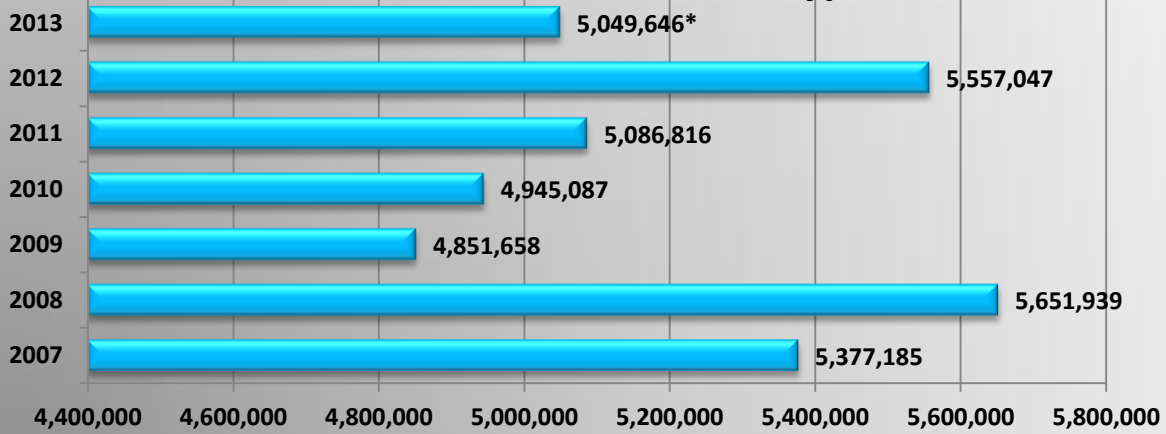
MCSAW Bypass Open Percentage												
	Nov	Dec	Jan	Feb	Mar	Apr	May	Jun	Jul	Aug	Sept	Oct
Nov 11 - Oct 12	91.0%	92.0%	93.0%	96.0%	96.0%	96.0%	92.0%	94.0%	94.0%	86.0%	93.0%	98.0%
Nov 12 - Oct 13	92.0%	94.0%	94.0%	96.0%	98.0%	97.0%	95.0%	97.0%	94.0%	95.0%	95.0%	97.0%

MCSAW Pull-in Percentage



MCSAW Pull-in Percentage												
	Nov	Dec	Jan	Feb	Mar	Apr	May	Jun	Jul	Aug	Sept	Oct
Nov 11 - Oct 12	27.0%	25.0%	23.0%	21.0%	23.0%	21.0%	32.0%	32.0%	31.0%	21.0%	22.0%	22.0%
Nov 12 - Oct 13	21.0%	22.0%	25.0%	28.0%	28.0%	28.0%	29.0%	27.0%	27.0%	26.0%	26.0%	26.0%

MCSAW Annual Number of Bypasses

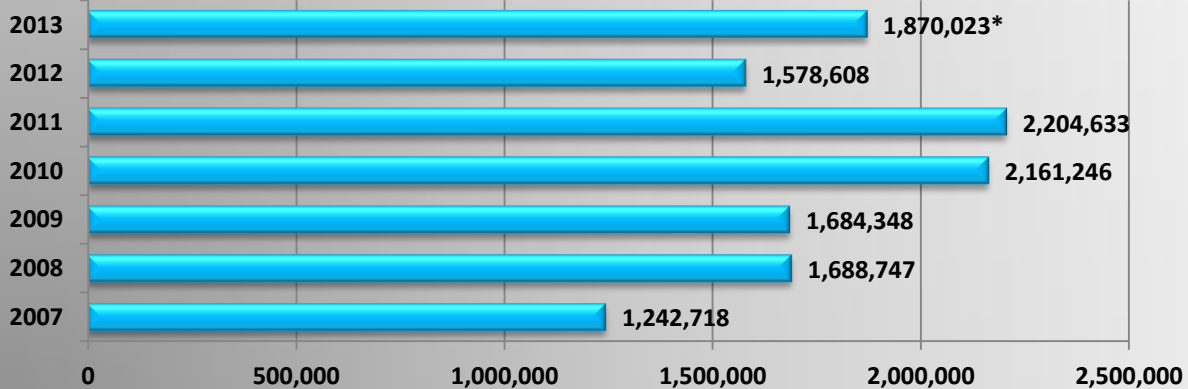


*as of 10/2013

MCSAW Pull-in Percentage

	Jan	Feb	Mar	Apr	May	Jun	Jul	Aug	Sept	Oct	Nov	Dec	Annual Total
2013	481,110	468,032	518,283	503,421	512,925	486,938	488,481	521,777	501,856	566,823			5,049,646
2012	424,196	456,051	483,690	459,015	458,436	431,981	423,953	451,909	454,295	537,351	494,032	482,138	5,557,047
2011	411,467	425,841	468,434	407,752	397,792	415,044	397,423	453,237	403,656	443,104	432,560	430,506	5,086,816
2010	361,417	408,853	468,558	432,933	426,150	404,527	380,849	433,326	388,358	440,847	386,897	412,372	4,945,087
2009	411,421	420,864	469,064	449,240	431,090	413,693	415,841	403,031	363,993	401,315	340,588	331,518	4,851,658
2008	489,394	484,542	532,791	525,044	490,390	457,809	455,435	459,515	456,681	475,878	403,221	421,239	5,651,939
2007	434,899	397,084	434,543	430,912	486,536	425,364	419,389	467,265	447,173	527,342	453,986	452,692	5,377,185

MCSAW Annual Number of Pull-ins



*as of 10/2013

MCSAW Pull-in Percentage

	Jan	Feb	Mar	Apr	May	Jun	Jul	Aug	Sept	Oct	Nov	Dec	Annual Total
2013	158,085	185,311	206,531	195,048	204,885	184,494	178,569	180,271	175,445	201,384			1,870,023
2012	129,843	121,142	141,359	123,383	139,364	134,974	123,015	117,066	129,105	154,280	130,476	134,601	1,578,608
2011	208,712	184,650	216,792	169,025	190,175	193,057	178,712	188,433	192,475	183,362	157,459	141,781	2,204,633
2010	163,055	171,638	193,256	183,865	186,093	188,705	180,795	192,924	167,170	179,350	157,545	196,850	2,161,246
2009	120,236	122,907	120,595	107,865	103,045	129,064	115,358	136,281	211,640	183,764	166,996	166,597	1,684,348
2008	138,519	139,299	142,793	146,229	135,479	152,715	142,529	136,499	142,438	163,563	128,318	120,366	1,688,747
2007	91,735	88,375	92,004	98,699	101,536	117,960	105,135	109,083	100,566	116,166	110,385	111,074	1,242,718

FY 13-14 AgPass Applications

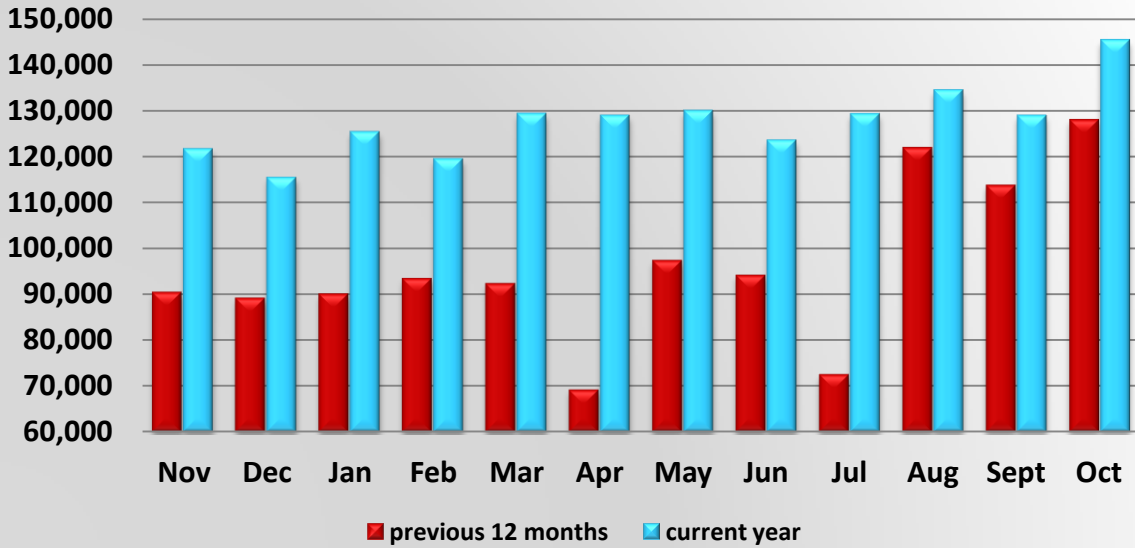


FY 13-14 AgPass Applications													
	July	Aug	Sept	Oct	Nov	Dec	Jan	Feb	Mar	Apr	May	June	Total
Approved	19	13	21	21									74
Denied	2	6	7	1									16
Other	0	0	0	3									3

Total Applications Received for FY: **93**
 Total Number of Approvals for FY: **74**
 Total Number of Denials for FY: **16**
 Total Number of Other for FY: **3**

Total Number of Applications Received Since June 2002 to Date: **5,144**
 Total Number of Approvals Since June 2002 to Date: **3,549**
 Total Number of Denials Since June 2002 to Date: **1,227**
 Total Number of Other since June 2002 to Date: **368**

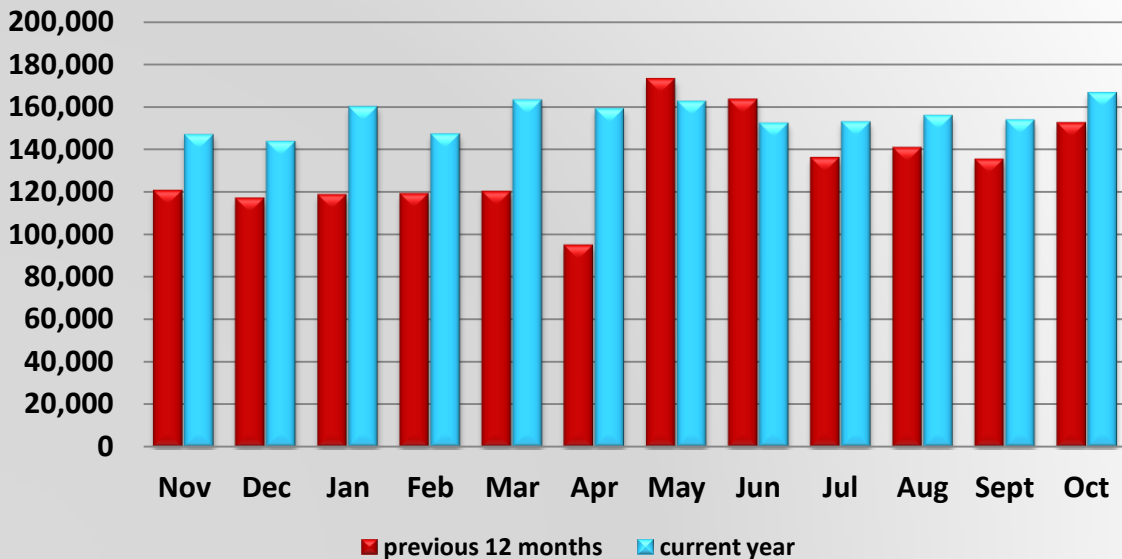
AgPass Bypass Activity at DACS Agricultural Interdiction Stations



DACS Bypass Activity

	Nov	Dec	Jan	Feb	Mar	Apr	May	Jun	Jul	Aug	Sept	Oct
Nov 11 - Oct 12	90,492	89,218	90,143	93,478	92,337	69,258	97,393	94,157	72,569	121,869	113,762	127,956
Nov 12 - Oct 13	121,621	115,424	125,347	119,427	129,325	128,913	129,938	123,523	129,262	134,393	128,906	145,286

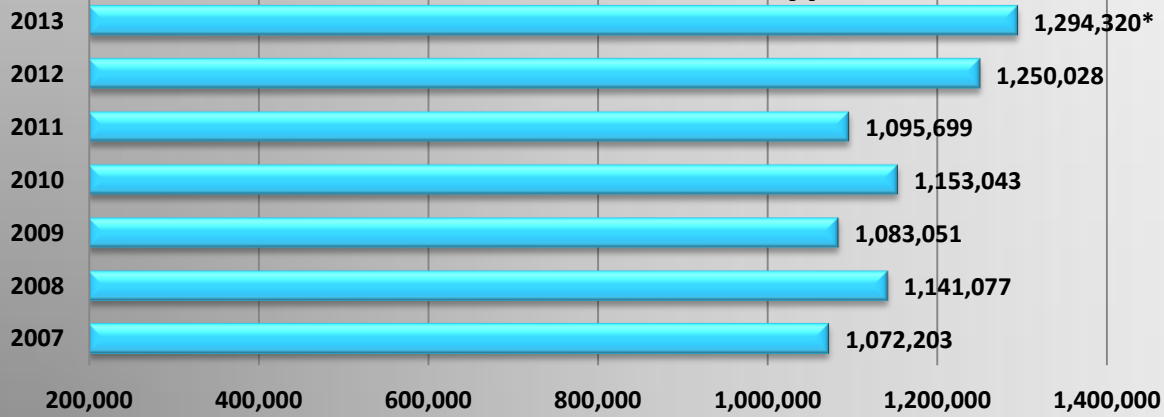
AgPass Pullin Activity at DACS Agricultural Interdiction Stations



DACS Pull-in Activity

	Nov	Dec	Jan	Feb	Mar	Apr	May	Jun	Jul	Aug	Sept	Oct
Nov 11 - Oct 12	120,422	116,852	118,560	118,906	120,054	94,777	172,769	163,159	135,800	140,553	135,022	152,085
Nov 12 - Oct 13	146,999	143,781	160,122	147,237	163,225	159,243	162,726	152,414	153,050	156,079	153,937	166,691

Annual Number of DACS Bypasses

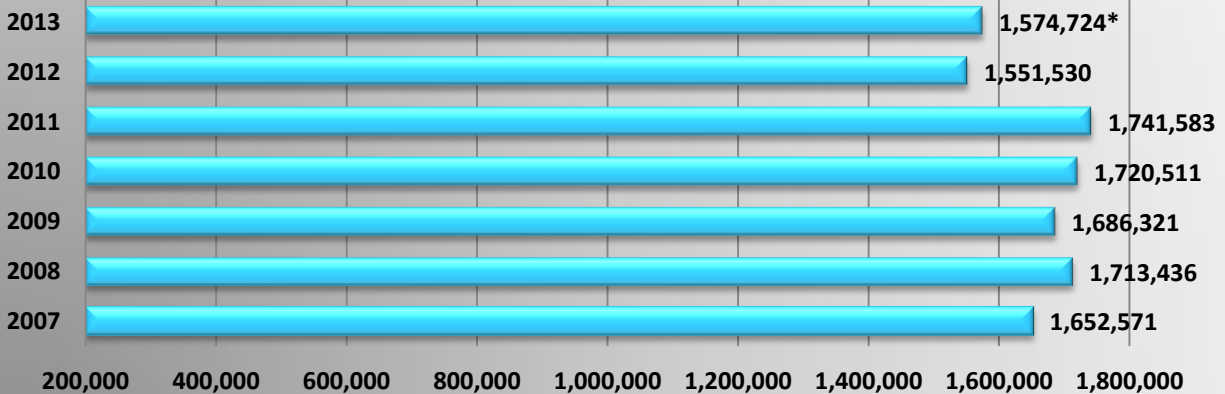


*as of 10/2013

Annual Number of DACS Bypasses

	Jan	Feb	Mar	Apr	May	Jun	Jul	Aug	Sept	Oct	Nov	Dec	Annual Total
2013	125,347	119,427	129,325	128,913	129,938	123,523	129,262	134,393	128,906	145,286			1,294,320
2012	90,143	93,478	92,337	69,258	92,252	94,754	117,174	121,869	113,762	127,956	121,621	115,424	1,250,028
2011	87,027	100,254	118,092	102,374	97,939	94,157	72,569	79,421	76,843	87,313	90,492	89,218	1,095,699
2010	91,125	87,391	100,842	94,969	101,303	100,963	98,428	89,895	91,337	101,814	105,535	89,441	1,153,043
2009	90,602	86,245	95,185	94,608	87,595	90,735	93,224	91,820	91,337	88,385	84,581	88,734	1,083,051
2008	96,240	93,649	97,911	96,915	98,420	95,559	97,641	92,288	96,633	98,665	88,397	88,759	1,141,077
2007	86,873	84,088	94,972	87,789	90,224	87,433	79,729	95,603	86,997	101,657	90,637	86,201	1,072,203

Annual Number of DACS Pullins

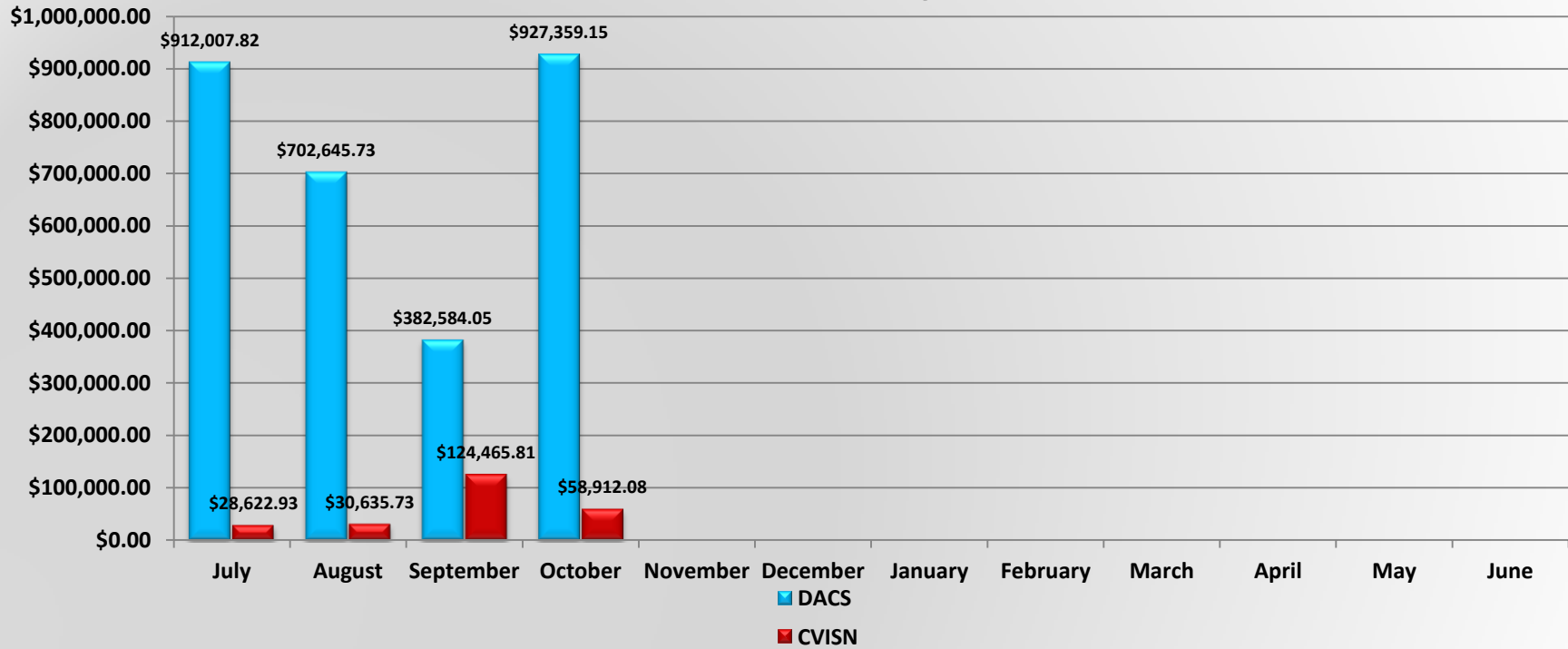


*as of 10/2013

Annual Number of DACS Pull-ins

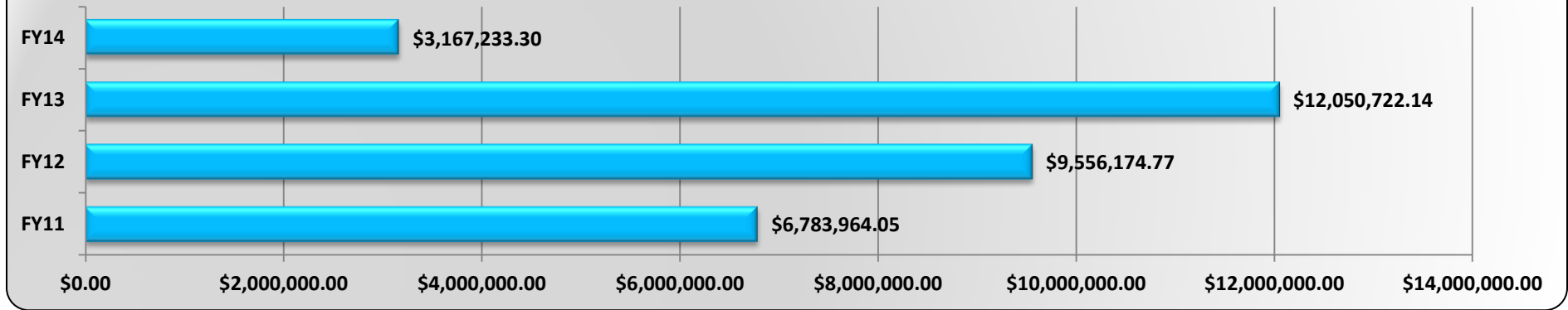
	Jan	Feb	Mar	Apr	May	Jun	Jul	Aug	Sept	Oct	Nov	Dec	Annual Total
2013	160,122	147,237	163,225	159,243	162,726	152,414	153,050	156,079	153,937	166,691			1,574,724
2012	118,560	118,906	120,054	94,777	123,375	118,655	138,763	140,553	135,022	152,085	146,999	143,781	1,551,530
2011	135,389	150,625	178,508	164,130	172,769	163,159	135,800	143,144	132,353	128,432	120,422	116,852	1,741,583
2010	140,006	134,375	153,339	142,969	158,681	157,905	150,122	142,774	132,861	138,138	133,597	135,744	1,720,511
2009	141,245	133,916	150,454	144,069	139,298	141,052	137,679	136,753	135,172	143,574	138,080	145,029	1,686,321
2008	146,630	141,316	149,368	145,574	147,638	147,834	143,733	135,975	141,134	146,775	131,546	135,913	1,713,436
2007	134,236	121,120	142,237	138,935	142,799	140,674	133,442	145,725	134,935	146,289	138,235	133,944	1,652,571

DACS/CVISN Recovery 2013-2014



	July	August	September	October	November	December	January	February	March	April	May	June
DACS	\$912,007.82	\$702,645.73	\$382,584.05	\$927,359.15								
CVISN	\$28,622.93	\$30,635.73	\$124,465.81	\$58,912.08								
TOTAL	\$940,630.75	\$733,281.46	\$507,049.86	\$986,271.23	\$0.00	\$0.00	\$0.00	\$0.00	\$0.00	\$0.00	\$0.00	\$0.00

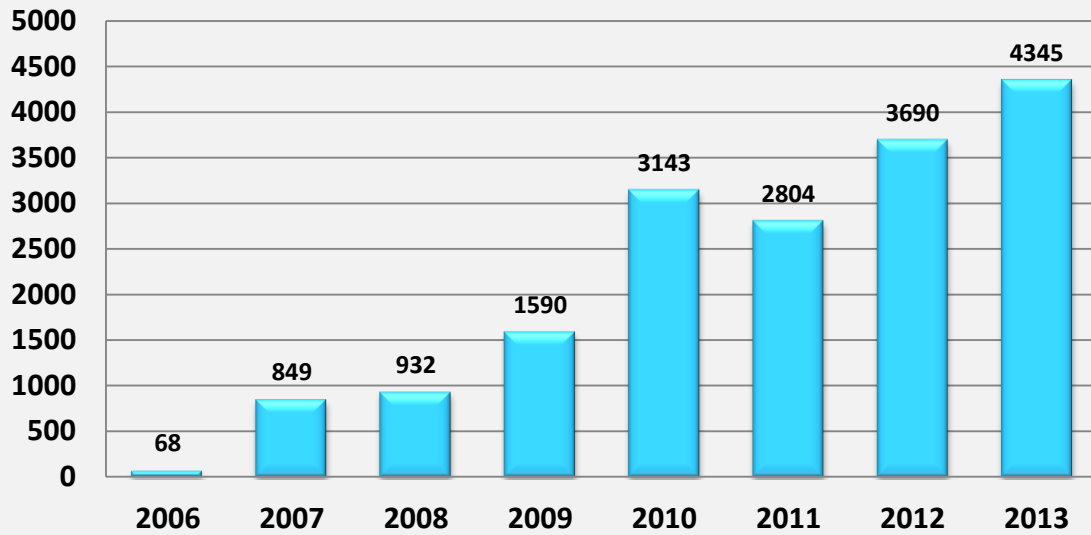
DACs/CVISN Recovery Fiscal Year Comparison



DACS/CVISN Recovery Fiscal Year Comparison

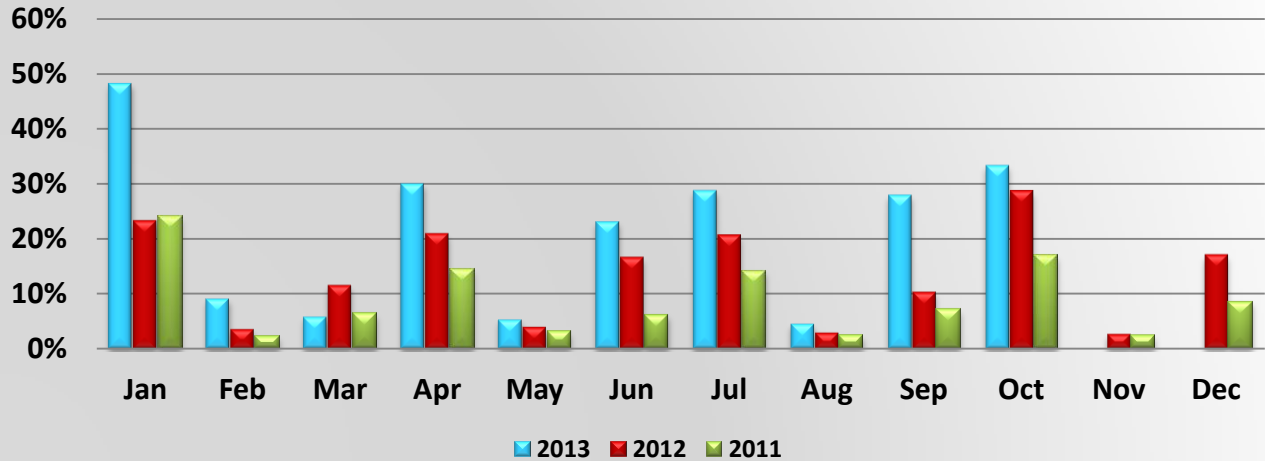
	July	August	September	October	November	December	January	February	March	April	May	June	Total
FY14	\$940,630.75	\$733,281.46	\$507,049.86	\$986,271.23									\$3,167,233.30
FY13	\$1,374,205.71	\$704,711.35	\$1,379,079.25	\$552,800.11	\$629,880.76	\$296,437.50	\$605,468.31	\$2,270,548.64	\$2,375,525.78	\$683,800.69	\$85,674.32	\$1,092,589.72	\$12,050,722.14
FY12	\$342,791.47	\$644,854.74	\$324,936.80	\$365,875.32	\$214,115.09	\$524,767.66	\$595,744.55	\$1,161,977.48	\$2,969,689.16	\$1,411,496.60	\$451,715.25	\$548,210.65	\$9,556,174.77
FY11	\$353,433.87	\$760,489.37	\$523,100.55	\$867,595.54	\$410,540.20	\$558,302.03	\$524,465.52	\$382,351.13	\$1,049,620.11	\$584,041.66	\$321,465.40	\$448,558.67	\$6,783,964.05

Number of New CVISN Accounts at DHSMV



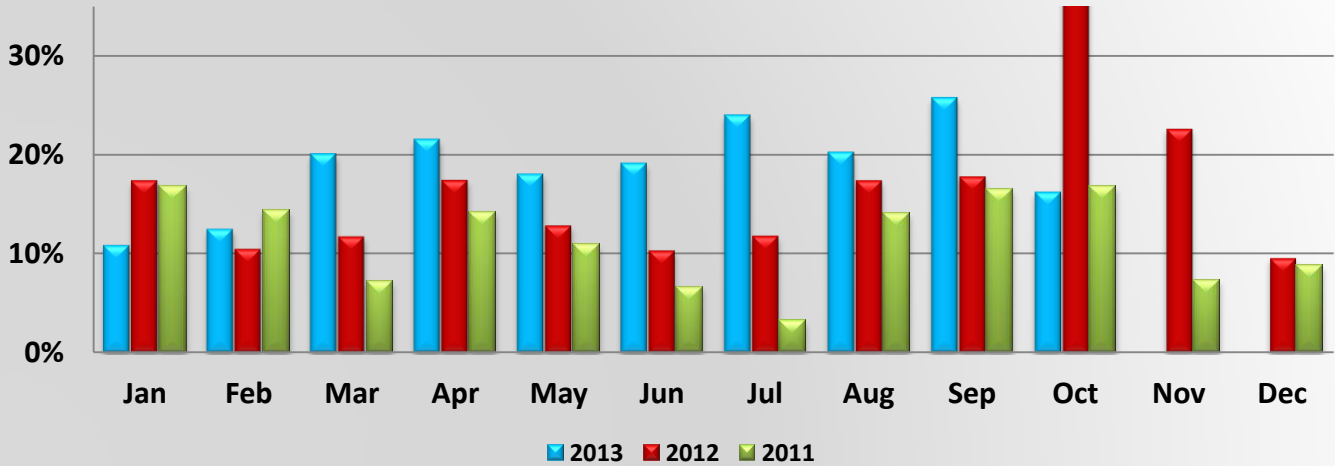
Total Number of New CVISN Accounts													
	Jan	Feb	Mar	Apr	May	Jun	Jul	Aug	Sep	Oct	Nov	Dec	Yearly Total
2006	0	0	0	0	0	0	0	0	17	35	11	5	68
2007	12	10	11	251	224	26	34	30	63	45	56	87	849
2008	39	266	30	37	25	35	35	52	112	165	72	64	932
2009	69	75	65	88	81	426	149	119	129	125	95	169	1590
2010	77	153	273	382	202	205	234	256	304	347	346	364	3143
2011	295	278	388	177	114	170	194	208	309	233	204	234	2804
2012	356	313	295	256	345	281	300	279	238	544	235	248	3690
2013	469	374	406	402	383	390	452	376	410	683			4345

Percent of Total IFTA Tax Returns



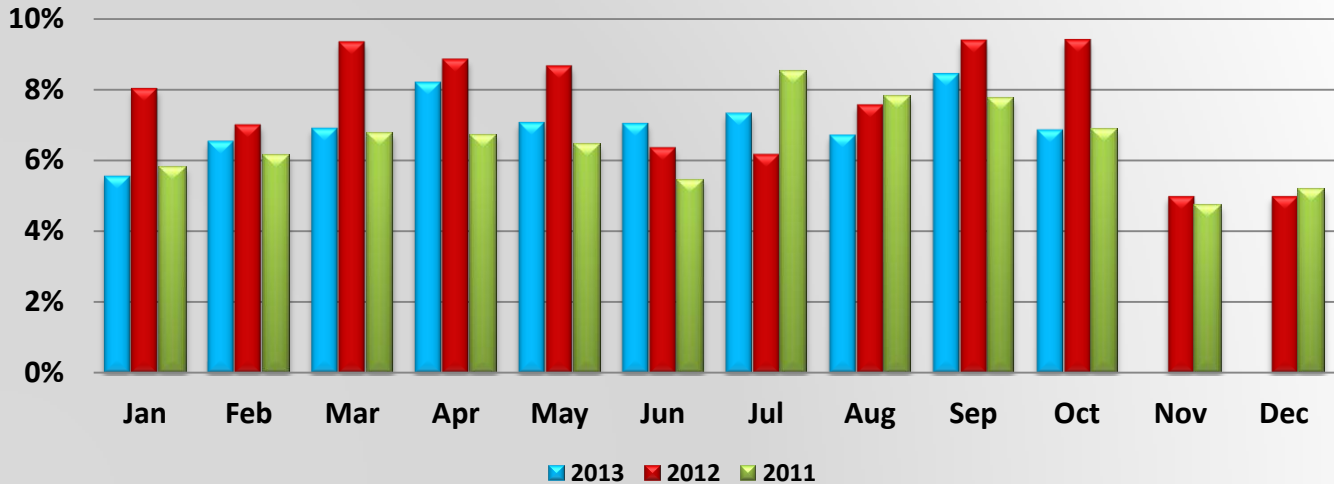
Percent of Total IFTA Tax Returns													
	Jan	Feb	Mar	Apr	May	Jun	Jul	Aug	Sep	Oct	Nov	Dec	Year End
2013	48.185%	9.119%	5.855%	29.998%	5.363%	23.142%	28.794%	4.578%	27.943%	33.309%			19.158%
2012	23.169%	3.626%	11.530%	20.826%	4.018%	16.605%	20.591%	2.972%	10.330%	28.596%	2.744%	17.030%	11.354%
2011	23.963%	2.272%	6.328%	14.413%	3.116%	6.117%	14.136%	2.440%	7.090%	16.900%	2.332%	8.517%	7.561%

Percent of Total IFTA Decals Issued



Percent of Total IFTA Decals Issued													
	Jan	Feb	Mar	Apr	May	Jun	Jul	Aug	Sep	Oct	Nov	Dec	Year End
2013	10.848%	12.465%	20.043%	21.497%	18.017%	19.105%	23.945%	20.212%	25.695%	16.208%			15.748%
2012	17.460%	10.542%	11.796%	17.484%	12.882%	10.373%	11.840%	17.450%	17.866%	65.640%	22.642%	9.600%	17.987%
2011	16.821%	14.395%	7.163%	14.186%	10.847%	6.631%	3.218%	14.080%	16.530%	16.820%	7.310%	8.797%	13.309%

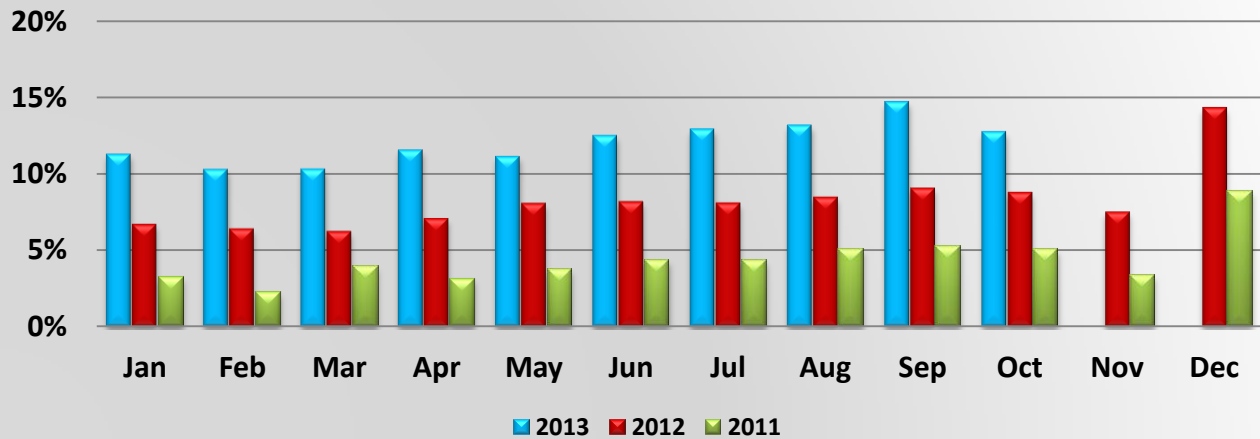
Percent of Total IRP Supplements Billed thru the web



Percent of Total IRP Supplements Billed thru the web

	Jan	Feb	Mar	Apr	May	Jun	Jul	Aug	Sep	Oct	Nov	Dec	Year End
2013	5.543%	6.529%	6.898%	8.192%	7.059%	7.032%	7.320%	6.700%	8.434%	6.853%			7.118%
2012	8.015%	6.992%	9.332%	8.836%	8.648%	6.351%	6.163%	7.551%	9.370%	9.393%	4.979%	4.977%	7.769%
2011	5.791%	6.163%	6.768%	6.720%	6.449%	5.458%	8.508%	7.800%	7.750%	6.880%	4.732%	5.174%	6.276%

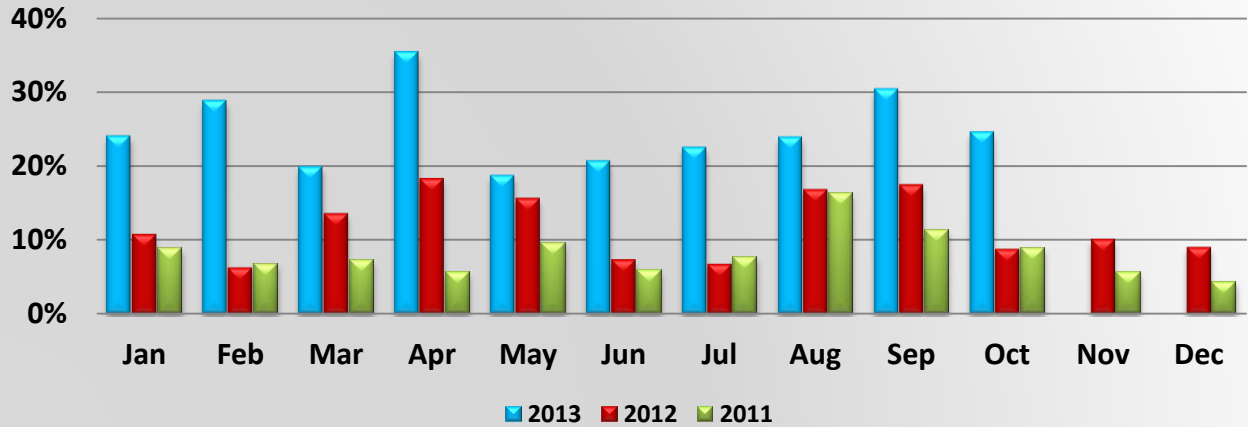
Percent of Total IRP Supplements paid thru the web



Percent of Total IRP Supplements paid thru the web

	Jan	Feb	Mar	Apr	May	Jun	Jul	Aug	Sep	Oct	Nov	Dec	Year End
2013	11.273%	10.294%	10.311%	11.553%	11.131%	12.482%	12.908%	13.151%	14.691%	12.749%			12.054%
2012	6.706%	6.393%	6.227%	7.072%	8.056%	8.163%	8.085%	8.455%	9.051%	8.763%	7.490%	14.267%	7.906%
2011	3.192%	2.199%	3.937%	3.112%	3.731%	4.344%	4.324%	5.040%	5.230%	5.050%	3.359%	8.854%	4.203%

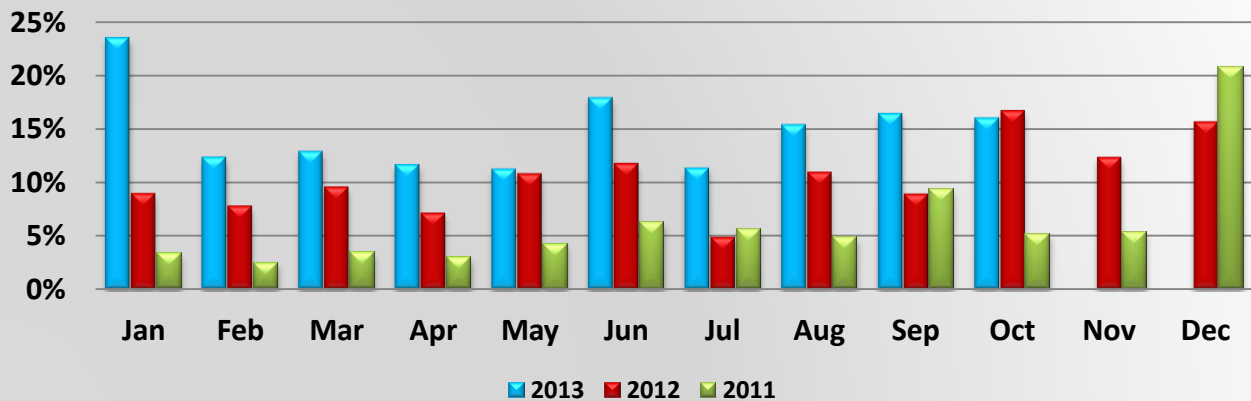
Percent of Total IRP Registrations billed thru the web



Percent of Total IRP Registrations billed thru the web

	Jan	Feb	Mar	Apr	May	Jun	Jul	Aug	Sep	Oct	Nov	Dec	Year End
2013	23.980%	28.774%	19.883%	35.324%	18.700%	20.645%	22.479%	23.873%	30.301%	24.568%			24.651%
2012	10.699%	6.235%	13.499%	18.173%	15.528%	7.329%	6.737%	16.700%	17.328%	8.720%	10.069%	8.967%	11.395%
2011	8.851%	6.720%	7.233%	5.590%	9.558%	5.777%	7.585%	16.310%	11.300%	8.830%	5.534%	4.278%	8.154%

Percent of Total IRP Registrations paid thru the web



Percent of Total IRP Registrations paid thru the web

	Jan	Feb	Mar	Apr	May	Jun	Jul	Aug	Sep	Oct	Nov	Dec	Year End
2013	23.493%	12.356%	12.898%	11.666%	11.245%	17.905%	11.341%	15.383%	16.443%	16.012%			14.997%
2012	8.946%	7.756%	9.534%	7.097%	10.757%	11.714%	4.858%	10.915%	8.888%	16.638%	12.307%	15.586%	10.065%
2011	3.341%	2.448%	3.432%	2.966%	4.268%	6.195%	5.610%	4.860%	9.340%	5.110%	5.315%	20.793%	5.529%



FTA 2014 Calendar of Events

Rev 12/3/13

(dates/events subject to change; check website for details)

Jan 21	NZ Blitz organizational meeting (Road Team, FHP CVE) 6:30 pm; Sheraton Tampa East Hotel	Mar 27	Truckers Day at the Capitol (FTA, Road Team, FHP CVE) 7 am – 3 pm; Tallahassee
Jan 22	FTA No Zone Blitz (Road Team, FHP CVE) 7 am – 4 pm; Tampa/Hillsborough area schools	Apr 10	Voluntary Vehicle Inspection (SMC, FHP) 7 – 11 am; I-95 South Yulee/Jax
Jan 23	Florida Road Team Selection (Road Team, Selection Committee) 7 am – 4 pm; Sheraton Tampa East Hotel	Apr 11	Council Meetings & Training (SMC, TMC, others) 8 am – 12 pm; J-Tech in Jacksonville
Jan 24	Tech Training (TMC) 8 am – 12 pm; Tampa location TBD	Apr 11	Fauss Scholarship applications due
	Road Team 101 (Road Team) 8 – 11 am; Tampa Sheraton East	May 22-24	Florida Truck Driving Championships (SMC, FTA, TMC, FHP CVE) Florida State Fairgrounds & Tampa Marriott Waterside Hotel
	Voluntary Vehicle Inspection (SMC) 7 – 11 am; FDOT Scale on I-4, Tampa	May 24	FTA Safety Management Awards (FTA, SMC) 7 pm; Tampa Marriott Waterside Hotel
Feb 6-7	TACT Wave #2 (Road Team, FHP) Jacksonville/Duval area schools	Jun 3-5	FHP Roadcheck Inspections (Road Team, SMC, TMC, FHP CVE) 6 am – 2 pm or 2 – 10 pm; Multiple scales across state
Feb 11	TACT Wave #2 Press Conference (Road Team, FHP) Yulee/Jax	Jun 5	Tech Training (TMC) 8 am – 12 pm; Mid-Florida Tech Orlando
Mar 7	Fauss Scholarship applications available	Jun 12-14	TACT Wave #3 (Road Team, FHP) Miami-Dade area schools
Mar 10	ATA TMC Annual Meeting Nashville TN	Jun 16-18	ATA ITLC/NAVC Annual Conference Lincolnshire IL
Mar 19	FTA TMC SuperTech 2014 (TMC) 7 am – 2 pm; Mid-Florida Tech Orlando	Jun 17	TACT Wave #3 Press Conference (Road Team, FHP) Miami TBD
Mar 23-26	Truckload Carriers annual convention Las Vegas NV	Jul 18-19	TACT Wave #4 (Road Team, FHP) Deland/Orlando/Daytona Bch schools
Mar 25	NZ Blitz organizational meeting (Road Team, FHP CVE) 6:30 pm; Tallahassee TBD		
Mar 26	FTA No Zone Blitz (Road Team, FHP CVE) 7 am – 4 pm; Tallahassee/Leon area schools		

Jul 29 **TACT Wave #4 Press Conference**
(Road Team, FHP)
I-4 TBD

Jul 31 – Aug 2 **FTA Annual Membership Conference**
Ritz-Carlton Orlando Grande Lakes

Aug 12-16 **ATA National TDC**
Pittsburgh PA

TBD ATA TMC Fall Meeting & Competition
Pittsburgh PA

Sep 14-20 **National Truck Driver Appreciation Week**
(SMC, Road Team, FTA)

TBD ATA SMC & HR National Conference
Reno NV

Sep 7-13 **Brake Safety Awareness Week Inspections**
(Road Team, SMC, FHP CVE, TMC)
6 am – 2 pm or 2 – 10 pm; Multiple scales across state

Oct 4-7 ATA MC&E Annual Conference
San Diego CA

Oct 21 **NZ Blitz organizational meeting**
(Road Team, FHP CVE)
6:30 pm; Gainesville TBD

Oct 22 **FTA No Zone Blitz**
(Road Team, FHP CVE)
Gainesville/Alachua county schools

Oct. 23 **FTA Educational Institute 2014**
9 am – 1 pm; J-Tech Jacksonville