

Florida CVISN Team Meeting
Tuesday, May 14, 1:30 pm to 3:30 pm

Conference Room 330
3rd Floor in the Rhyne Building
2740 Centerview Drive, Tallahassee, FL 32301

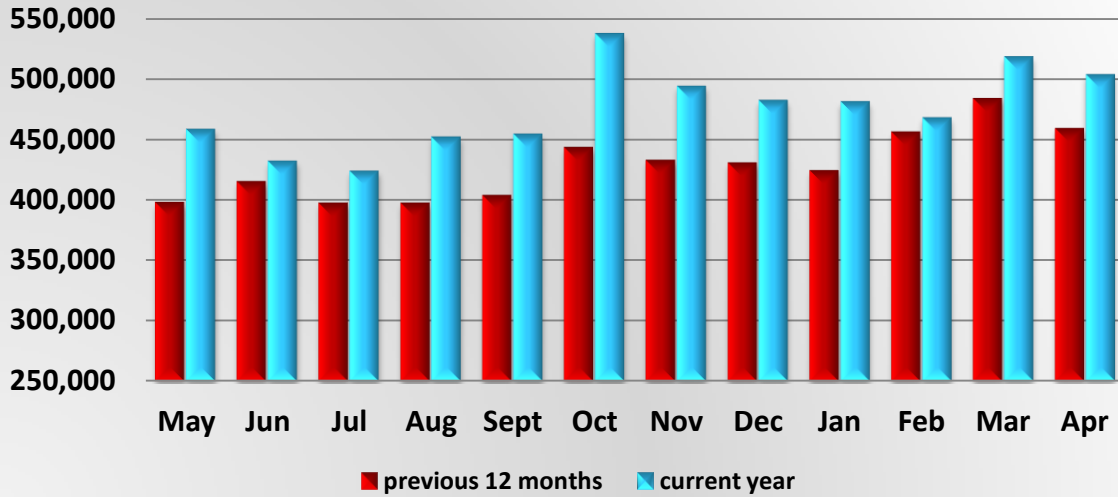
Teleconference: 850-410-5667; Toll Free: 866-374-3368 ext. 5667



AGENDA

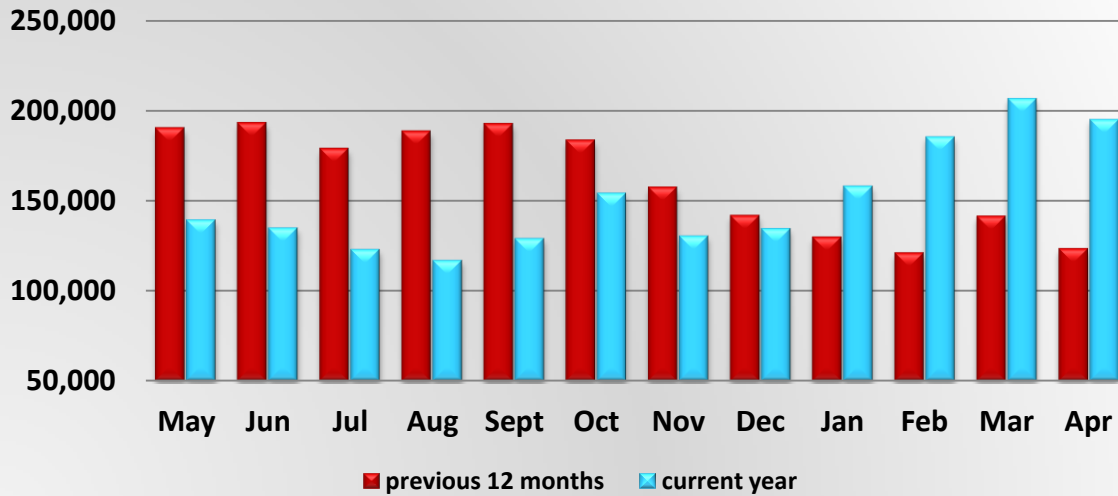
1. Welcome and Introductions *Paul Clark*
2. Current Project updates and/or discussion
 - a. Pre-Clearance at Motor Carrier Compliance Weigh Stations *Keith Westphal*
 - b. Pre-clearance at Ag. Sites *Tim Rutherford*
 - c. Permitting System Enhancements Project *Bryan Hubbard*
 - FY2007 project update
 - FY2011 project update
 - d. Automated Permitting System Utilization *Veronica Martin*
 - e. BOL Program *Lynn McElroy*
 - Use tax collections (Total and CVISN-BOL)
 - Automated BOL processing system
 - Other activities
 - f. E-Credentialing System Usage Stats *David Helton*
 - g. VWS deployment *Craig Wilson*
 - h. Port of Entry Study *Paul Clark*
 - i. Container Number Database & LPR System Hosting (O&M) Update *Paul Clark/Clay Packard*
 - j. LPR/PRISM Project (MCSAW) *Paul Clark/Clay Packard*
 - k. LPR/PRISM Project (DACs) *Jeff Jordan*
 - l. Florida Expanded CVISN Program Plan/ Top Level Design Document Update *Marie Tucker*
3. Trucking Industry Update *Mary Lou Rajchel/Dianna White*
4. CVISN Grants *Paul Clark/Group*
 - a. FY2011 grant - \$280K reallocation of funds (amendment)
5. Weigh Station Equipment utilization *Mickey Davis*
6. Other items *Group*
7. Next CVISN meeting – August 22, 2013 *Group*

MCSAW Prepass Bypass Activity



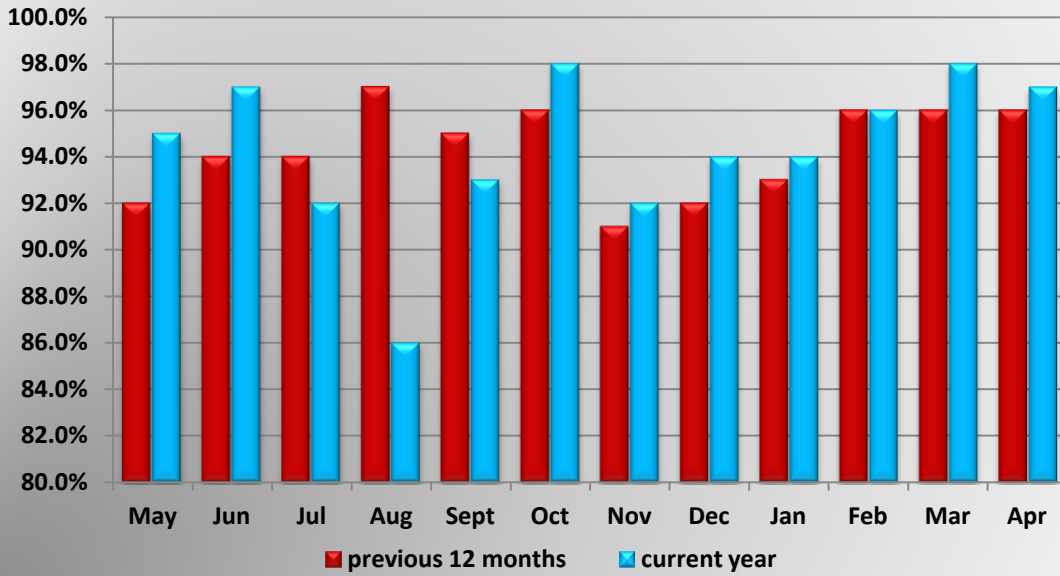
| MCSAW PrePass Pull-in Activity | | | | | | | | | | | | |
|--------------------------------|---------|---------|---------|---------|---------|---------|---------|---------|---------|---------|---------|---------|
| | May | Jun | Jul | Aug | Sept | Oct | Nov | Dec | Jan | Feb | Mar | Apr |
| May 11 - Apr 12 | 397,792 | 415,044 | 397,423 | 397,423 | 403,656 | 443,104 | 432,560 | 430,506 | 424,196 | 456,051 | 483,690 | 459,015 |
| May 12 - Apr 13 | 458,436 | 431,981 | 423,953 | 451,909 | 454,295 | 537,351 | 494,032 | 482,138 | 481,110 | 468,032 | 518,283 | 503,421 |

MCSAW PrePass Pull-in Activity



| MCSAW PrePass Pull-in Activity | | | | | | | | | | | | |
|--------------------------------|---------|---------|---------|---------|---------|---------|---------|---------|---------|---------|---------|---------|
| | May | Jun | Jul | Aug | Sept | Oct | Nov | Dec | Jan | Feb | Mar | Apr |
| May 11 - Apr 12 | 190,175 | 193,057 | 178,712 | 188,443 | 192,475 | 183,362 | 157,459 | 141,781 | 129,843 | 121,142 | 141,359 | 123,383 |
| May 12 - Apr 13 | 139,364 | 134,974 | 123,015 | 117,066 | 129,105 | 154,280 | 130,476 | 134,601 | 158,085 | 185,311 | 206,531 | 195,048 |

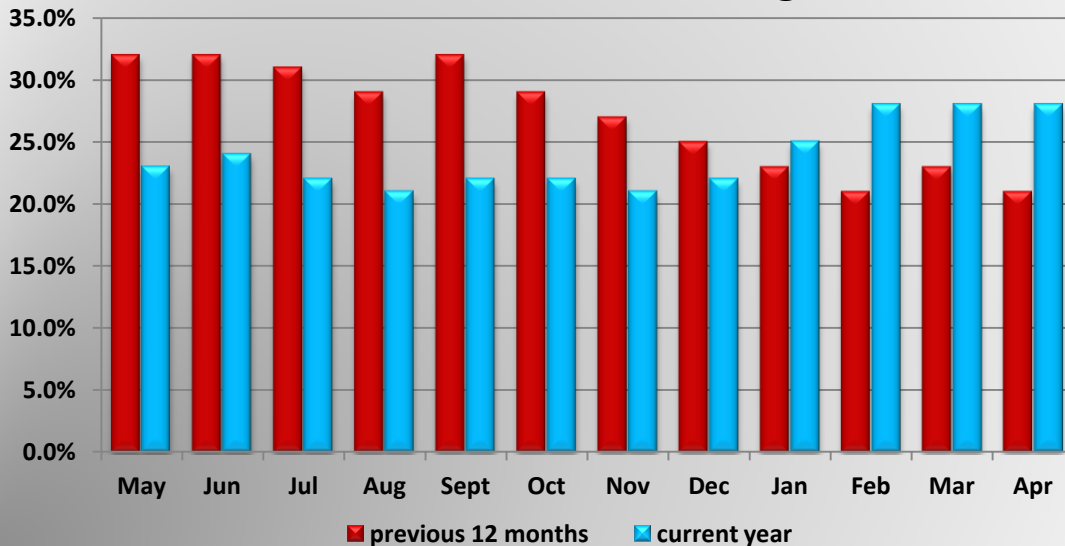
MCSAW Bypass Open Percentage



MCSAW Bypass Open Percentage

| | May | Jun | Jul | Aug | Sept | Oct | Nov | Dec | Jan | Feb | Mar | Apr |
|------------------------|-------|-------|-------|-------|-------|-------|-------|-------|-------|-------|-------|-------|
| May 11 - Apr 12 | 92.0% | 94.0% | 94.0% | 97.0% | 95.0% | 96.0% | 91.0% | 92.0% | 93.0% | 96.0% | 96.0% | 96.0% |
| May 12 - Apr 13 | 95.0% | 97.0% | 92.0% | 86.0% | 93.0% | 98.0% | 92.0% | 94.0% | 94.0% | 96.0% | 98.0% | 97.0% |

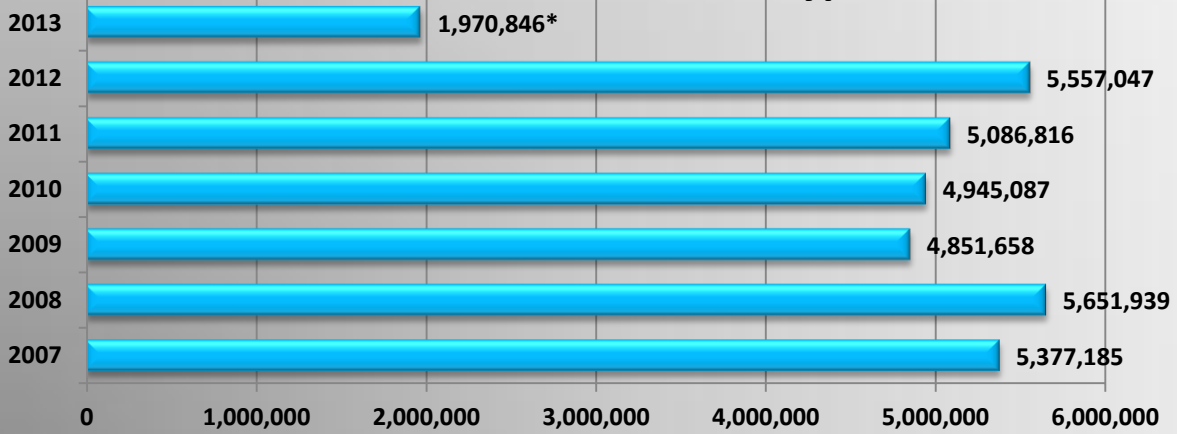
MCSAW Pull-in Percentage



MCSAW Pull-in Percentage

| | May | Jun | Jul | Aug | Sept | Oct | Nov | Dec | Jan | Feb | Mar | Apr |
|------------------------|-------|-------|-------|-------|-------|-------|-------|-------|-------|-------|-------|-------|
| May 11 - Apr 12 | 32.0% | 32.0% | 31.0% | 29.0% | 32.0% | 29.0% | 27.0% | 25.0% | 23.0% | 21.0% | 23.0% | 21.0% |
| May 12 - Apr 13 | 23.0% | 24.0% | 22.0% | 21.0% | 22.0% | 22.0% | 21.0% | 22.0% | 25.0% | 28.0% | 28.0% | 28.0% |

MCSAW Annual Number of Bypasses

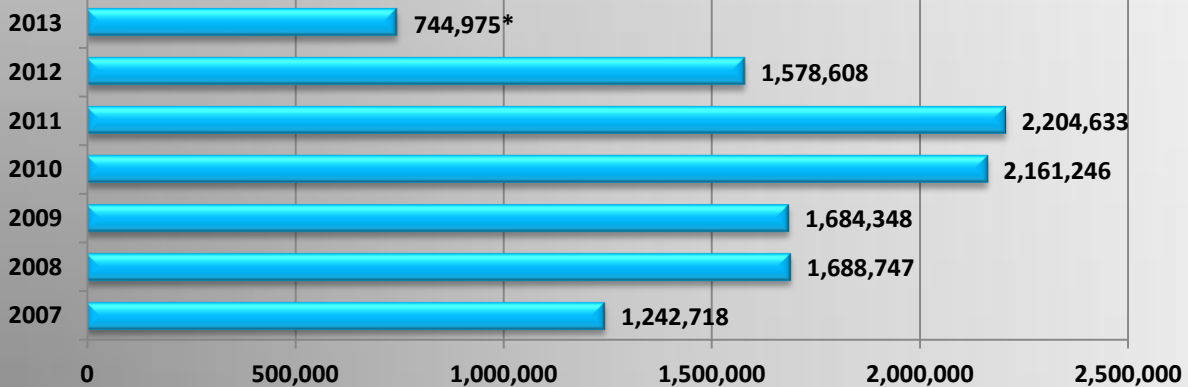


*as of 4/2013

MCSAW Pull-in Percentage

| | Jan | Feb | Mar | Apr | May | Jun | Jul | Aug | Sept | Oct | Nov | Dec | Annual Total |
|------|---------|---------|---------|---------|---------|---------|---------|---------|---------|---------|---------|---------|--------------|
| 2013 | 481,110 | 468,032 | 518,283 | 503,421 | | | | | | | | | 1,970,846 |
| 2012 | 424,196 | 456,051 | 483,690 | 459,015 | 458,436 | 431,981 | 423,953 | 451,909 | 454,295 | 537,351 | 494,032 | 482,138 | 5,557,047 |
| 2011 | 411,467 | 425,841 | 468,434 | 407,752 | 397,792 | 415,044 | 397,423 | 453,237 | 403,656 | 443,104 | 432,560 | 430,506 | 5,086,816 |
| 2010 | 361,417 | 408,853 | 468,558 | 432,933 | 426,150 | 404,527 | 380,849 | 433,326 | 388,358 | 440,847 | 386,897 | 412,372 | 4,945,087 |
| 2009 | 411,421 | 420,864 | 469,064 | 449,240 | 431,090 | 413,693 | 415,841 | 403,031 | 363,993 | 401,315 | 340,588 | 331,518 | 4,851,658 |
| 2008 | 489,394 | 484,542 | 532,791 | 525,044 | 490,390 | 457,809 | 455,435 | 459,515 | 456,681 | 475,878 | 403,221 | 421,239 | 5,651,939 |
| 2007 | 434,899 | 397,084 | 434,543 | 430,912 | 486,536 | 425,364 | 419,389 | 467,265 | 447,173 | 527,342 | 453,986 | 452,692 | 5,377,185 |

MCSAW Annual Number of Pull-ins

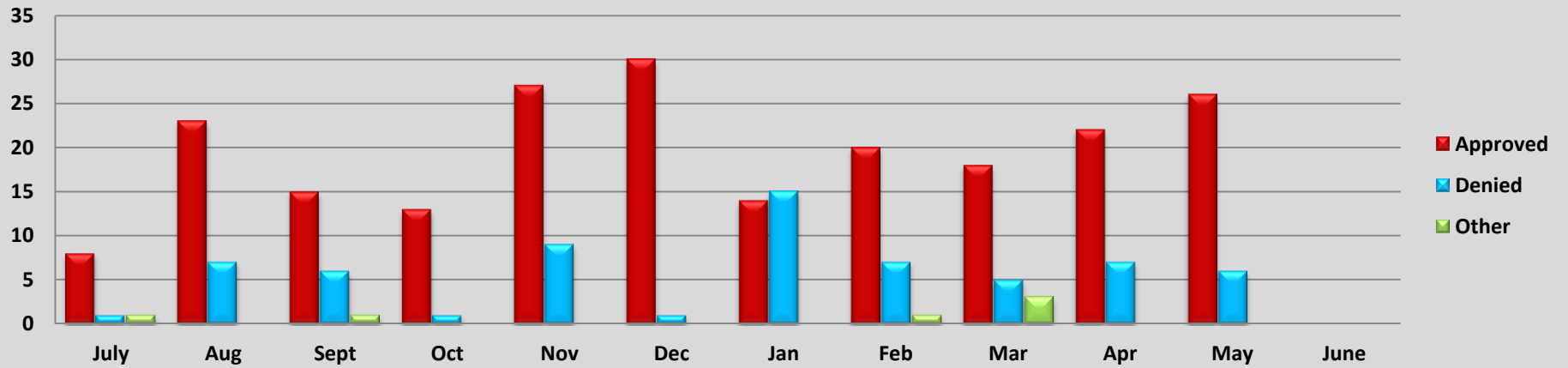


*as of 4/2013

MCSAW Pull-in Percentage

| | Jan | Feb | Mar | Apr | May | Jun | Jul | Aug | Sept | Oct | Nov | Dec | Annual Total |
|------|---------|---------|---------|---------|---------|---------|---------|---------|---------|---------|---------|---------|--------------|
| 2013 | 158,085 | 185,311 | 206,531 | 195,048 | | | | | | | | | 744,975 |
| 2012 | 129,843 | 121,142 | 141,359 | 123,383 | 139,364 | 134,974 | 123,015 | 117,066 | 129,105 | 154,280 | 130,476 | 134,601 | 1,578,608 |
| 2011 | 208,712 | 184,650 | 216,792 | 169,025 | 190,175 | 193,057 | 178,712 | 188,433 | 192,475 | 183,362 | 157,459 | 141,781 | 2,204,633 |
| 2010 | 163,055 | 171,638 | 193,256 | 183,865 | 186,093 | 188,705 | 180,795 | 192,924 | 167,170 | 179,350 | 157,545 | 196,850 | 2,161,246 |
| 2009 | 120,236 | 122,907 | 120,595 | 107,865 | 103,045 | 129,064 | 115,358 | 136,281 | 211,640 | 183,764 | 166,996 | 166,597 | 1,684,348 |
| 2008 | 138,519 | 139,299 | 142,793 | 146,229 | 135,479 | 152,715 | 142,529 | 136,499 | 142,438 | 163,563 | 128,318 | 120,366 | 1,688,747 |
| 2007 | 91,735 | 88,375 | 92,004 | 98,699 | 101,536 | 117,960 | 105,135 | 109,083 | 100,566 | 116,166 | 110,385 | 111,074 | 1,242,718 |

FY 12-13 AgPass Applications

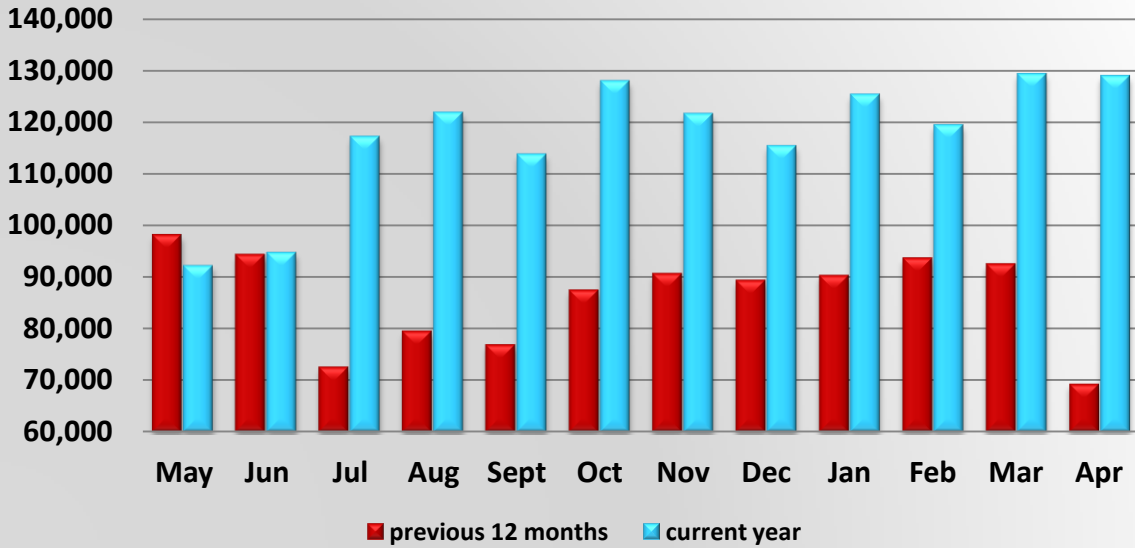


| FY 12-13 AgPass Applications | | | | | | | | | | | | | |
|------------------------------|------|-----|------|-----|-----|-----|-----|-----|-----|-----|-----|------|------------|
| | July | Aug | Sept | Oct | Nov | Dec | Jan | Feb | Mar | Apr | May | June | Total |
| Approved | 8 | 23 | 15 | 13 | 27 | 30 | 14 | 20 | 18 | 22 | 26 | | 216 |
| Denied | 1 | 7 | 6 | 1 | 9 | 1 | 15 | 7 | 5 | 7 | 6 | | 65 |
| Other | 1 | 0 | 1 | 0 | 0 | 0 | 0 | 1 | 3 | 0 | 0 | | 6 |

Total Applications Received for FY: **277**
 Total Number of Approvals for FY: **216**
 Total Number of Denials for FY: **65**
 Total Number of Other for FY: **6**

Total Number of Applications Received Since June 2002 to Date: **5,003**
 Total Number of Approvals Since June 2002 to Date: **3,447**
 Total Number of Denials Since June 2002 to Date: **1,215**
 Total Number of Other since June 2002 to Date: **351**

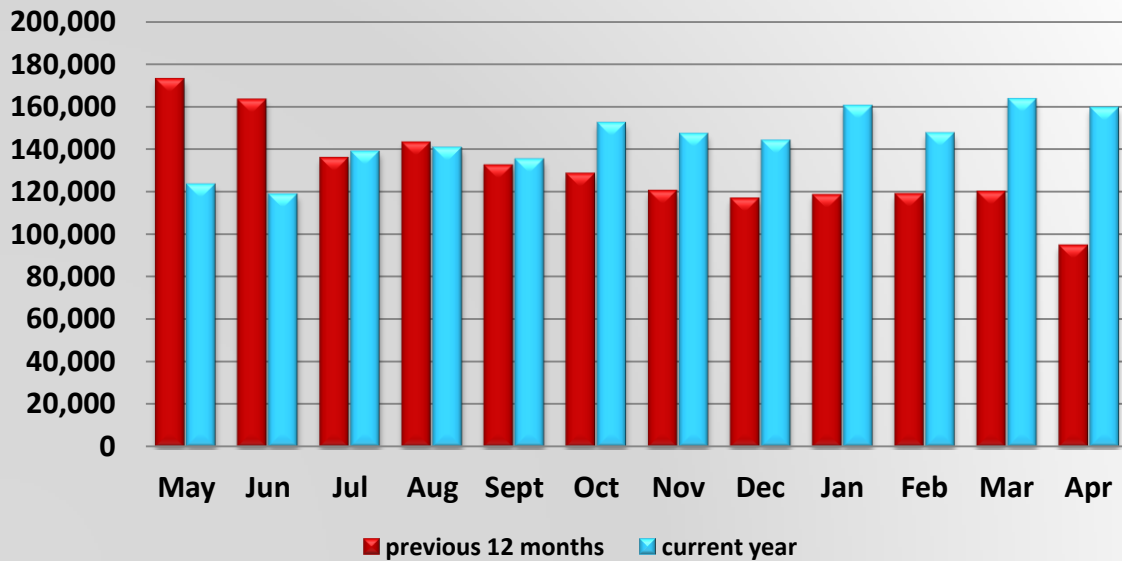
AgPass Bypass Activity at DACS Agricultural Interdiction Stations



DACS Bypass Activity

| | May | Jun | Jul | Aug | Sept | Oct | Nov | Dec | Jan | Feb | Mar | Apr |
|-----------------|--------|--------|---------|---------|---------|---------|---------|---------|---------|---------|---------|---------|
| May 11 - Apr 12 | 97,939 | 94,157 | 72,569 | 79,421 | 76,843 | 87,313 | 90,492 | 89,218 | 90,143 | 93,478 | 92,337 | 69,258 |
| May 12 - Apr 13 | 92,252 | 94,754 | 117,174 | 121,869 | 113,762 | 127,956 | 121,621 | 115,424 | 125,347 | 119,427 | 129,325 | 128,913 |

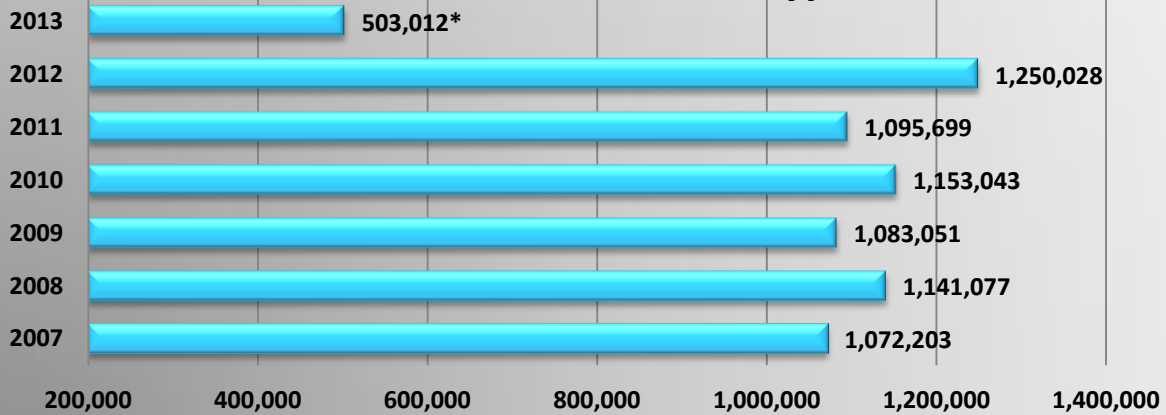
AgPass Pullin Activity at DACS Agricultural Interdiction Stations



DACS Pull-in Activity

| | May | Jun | Jul | Aug | Sept | Oct | Nov | Dec | Jan | Feb | Mar | Apr |
|-----------------|---------|---------|---------|---------|---------|---------|---------|---------|---------|---------|---------|---------|
| May 11 - Apr 12 | 172,769 | 163,159 | 135,800 | 143,144 | 132,353 | 128,432 | 120,422 | 116,852 | 118,560 | 118,906 | 120,054 | 94,777 |
| May 12 - Apr 13 | 123,375 | 118,655 | 138,763 | 140,553 | 135,022 | 152,085 | 146,999 | 143,781 | 160,122 | 147,237 | 163,225 | 159,243 |

Annual Number of DACS Bypasses

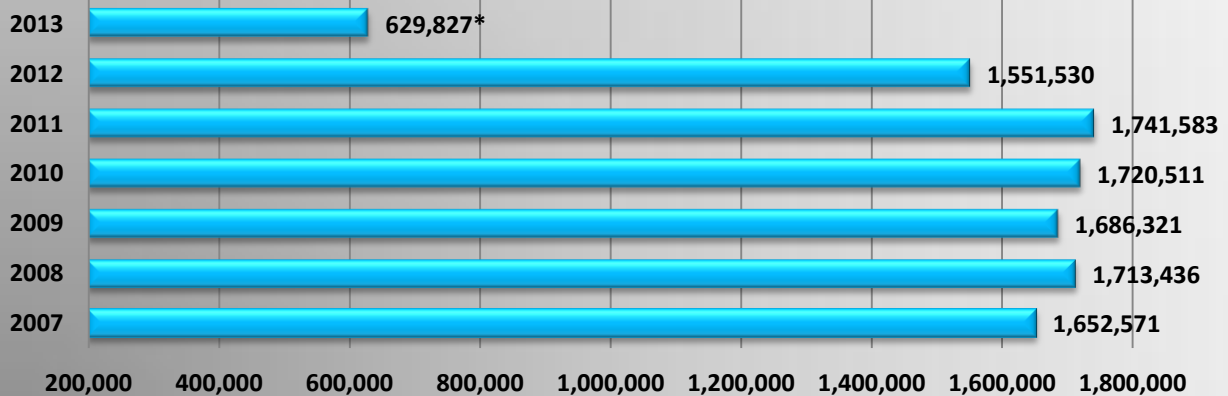


*as of 4/2013

Annual Number of DACS Bypasses

| | Jan | Feb | Mar | Apr | May | Jun | Jul | Aug | Sept | Oct | Nov | Dec | Annual Total |
|------|---------|---------|---------|---------|---------|---------|---------|---------|---------|---------|---------|---------|--------------|
| 2013 | 125,347 | 119,427 | 129,325 | 128,913 | | | | | | | | | 503,012 |
| 2012 | 90,143 | 93,478 | 92,337 | 69,258 | 92,252 | 94,754 | 117,174 | 121,869 | 113,762 | 127,956 | 121,621 | 115,424 | 1,250,028 |
| 2011 | 87,027 | 100,254 | 118,092 | 102,374 | 97,939 | 94,157 | 72,569 | 79,421 | 76,843 | 87,313 | 90,492 | 89,218 | 1,095,699 |
| 2010 | 91,125 | 87,391 | 100,842 | 94,969 | 101,303 | 100,963 | 98,428 | 89,895 | 91,337 | 101,814 | 105,535 | 89,441 | 1,153,043 |
| 2009 | 90,602 | 86,245 | 95,185 | 94,608 | 87,595 | 90,735 | 93,224 | 91,820 | 91,337 | 88,385 | 84,581 | 88,734 | 1,083,051 |
| 2008 | 96,240 | 93,649 | 97,911 | 96,915 | 98,420 | 95,559 | 97,641 | 92,288 | 96,633 | 98,665 | 88,397 | 88,759 | 1,141,077 |
| 2007 | 86,873 | 84,088 | 94,972 | 87,789 | 90,224 | 87,433 | 79,729 | 95,603 | 86,997 | 101,657 | 90,637 | 86,201 | 1,072,203 |

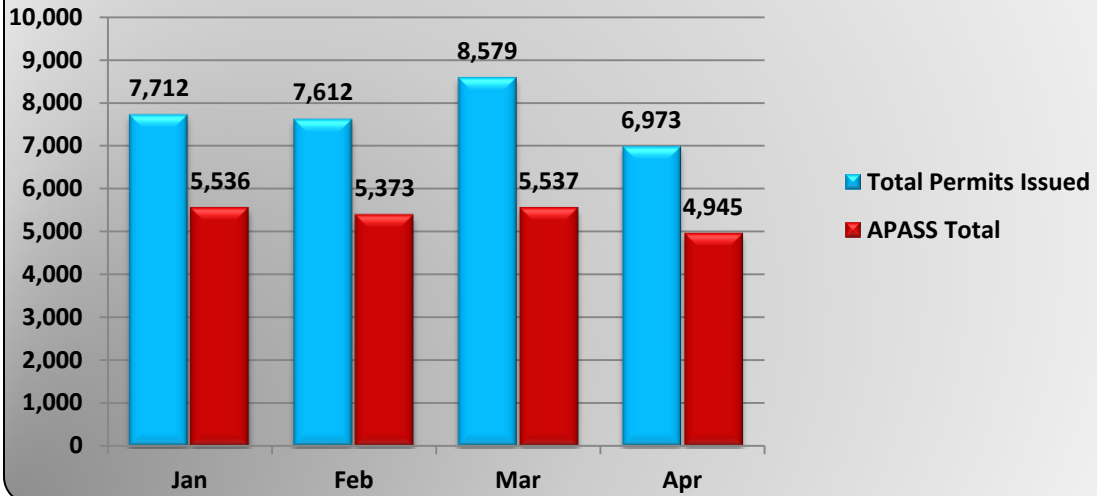
Annual Number of DACS Pullins



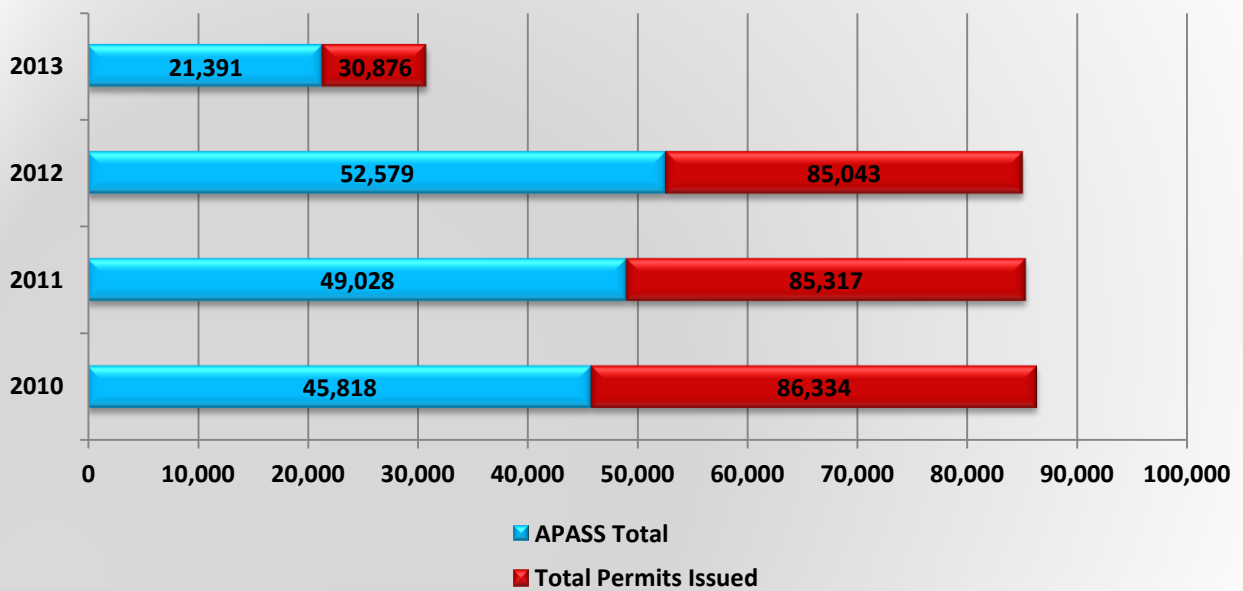
Annual Number of DACS Pull-ins

| | Jan | Feb | Mar | Apr | May | Jun | Jul | Aug | Sept | Oct | Nov | Dec | Annual Total |
|------|---------|---------|---------|---------|---------|---------|---------|---------|---------|---------|---------|---------|--------------|
| 2013 | 160,122 | 147,237 | 163,225 | 159,243 | | | | | | | | | 629,827 |
| 2012 | 118,560 | 118,906 | 120,054 | 94,777 | 123,375 | 118,655 | 138,763 | 140,553 | 135,022 | 152,085 | 146,999 | 143,781 | 1,551,530 |
| 2011 | 135,389 | 150,625 | 178,508 | 164,130 | 172,769 | 163,159 | 135,800 | 143,144 | 132,353 | 128,432 | 120,422 | 116,852 | 1,741,583 |
| 2010 | 140,006 | 134,375 | 153,339 | 142,969 | 158,681 | 157,905 | 150,122 | 142,774 | 132,861 | 138,138 | 133,597 | 135,744 | 1,720,511 |
| 2009 | 141,245 | 133,916 | 150,454 | 144,069 | 139,298 | 141,052 | 137,679 | 136,753 | 135,172 | 143,574 | 138,080 | 145,029 | 1,686,321 |
| 2008 | 146,630 | 141,316 | 149,368 | 145,574 | 147,638 | 147,834 | 143,733 | 135,975 | 141,134 | 146,775 | 131,546 | 135,913 | 1,713,436 |
| 2007 | 134,236 | 121,120 | 142,237 | 138,935 | 142,799 | 140,674 | 133,442 | 145,725 | 134,935 | 146,289 | 138,235 | 133,944 | 1,652,571 |

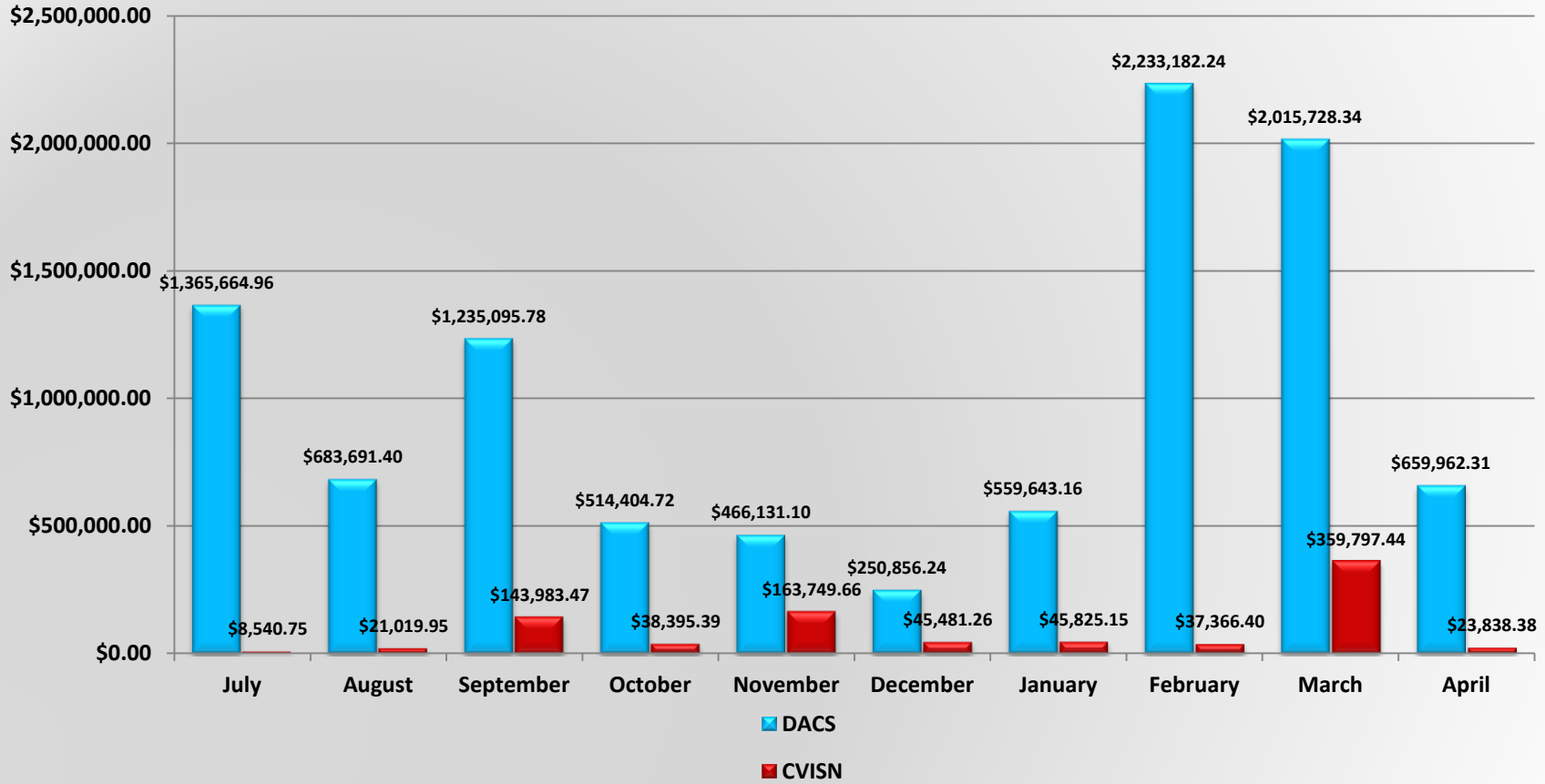
2013 Permit Activity (APASS)



Annual Permit Activity (APASS)



DACS/CVISN Recovery 2012-2013



| | July | August | September | October | November | December | January | February | March | April |
|--------------|-----------------------|---------------------|-----------------------|---------------------|---------------------|---------------------|---------------------|-----------------------|-----------------------|---------------------|
| DACS | \$1,365,664.96 | \$683,691.40 | \$1,235,095.78 | \$514,404.72 | \$466,131.10 | \$250,856.24 | \$559,643.16 | \$2,233,182.24 | \$2,015,728.34 | \$659,962.31 |
| CVISN | \$8,540.75 | \$21,019.95 | \$143,983.47 | \$38,395.39 | \$163,749.66 | \$45,481.26 | \$45,825.15 | \$37,366.40 | \$359,797.44 | \$23,838.38 |
| TOTAL | \$1,374,205.71 | \$704,711.35 | \$1,379,079.25 | \$552,800.11 | \$629,880.76 | \$296,337.50 | \$605,468.31 | \$2,270,548.64 | \$2,375,525.78 | \$683,800.69 |

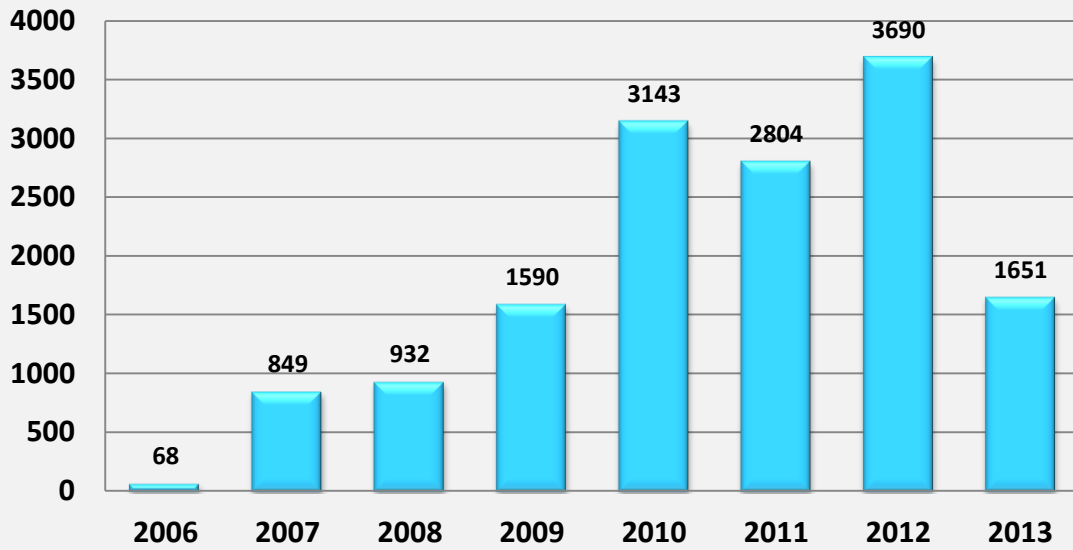
DACS/CVISN Recovery Fiscal Year Comparison



DACS/CVISN Recovery Fiscal Year Comparison

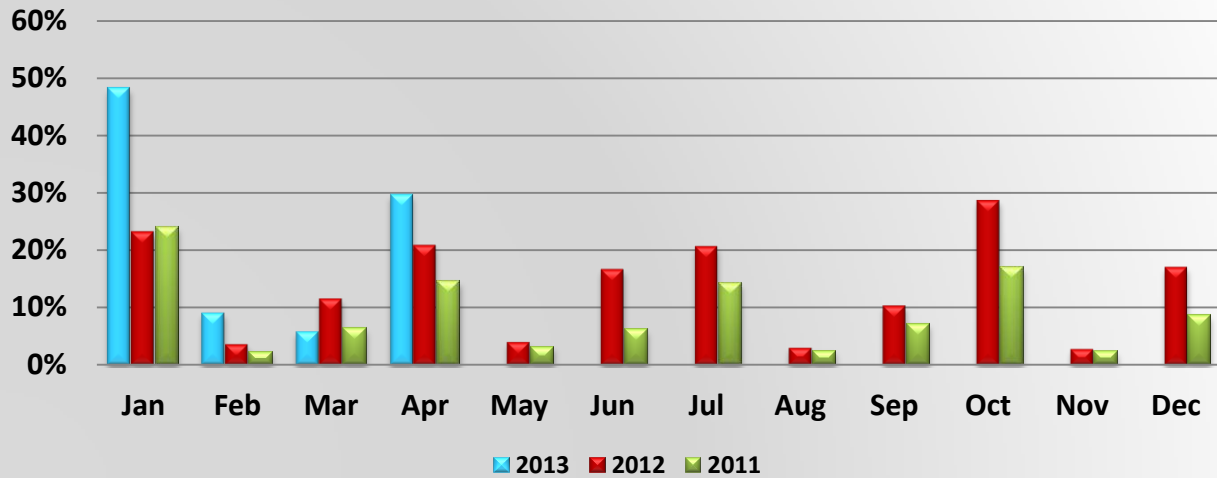
| | July | August | September | October | November | December | January | February | March | April | May | June | Total |
|-------------|----------------|--------------|----------------|--------------|--------------|--------------|--------------|----------------|----------------|----------------|--------------|--------------|------------------------|
| FY13 | \$1,374,205.71 | \$704,711.35 | \$1,379,079.25 | \$552,800.11 | \$629,880.76 | \$296,437.50 | \$605,468.31 | \$2,270,548.64 | \$2,375,525.78 | \$683,800.69 | | | \$10,872,458.10 |
| FY12 | \$342,791.47 | \$644,854.74 | \$324,936.80 | \$365,875.32 | \$214,115.09 | \$524,767.66 | \$595,744.55 | \$1,161,977.48 | \$2,969,689.16 | \$1,411,496.60 | \$451,715.25 | \$548,210.65 | \$9,556,174.77 |
| FY11 | \$353,433.87 | \$760,489.37 | \$523,100.55 | \$867,595.54 | \$410,540.20 | \$558,302.03 | \$524,465.52 | \$382,351.13 | \$1,049,620.11 | \$584,041.66 | \$321,465.40 | \$448,558.67 | \$6,783,964.05 |

Number of New CVISN Accounts at DHSMV



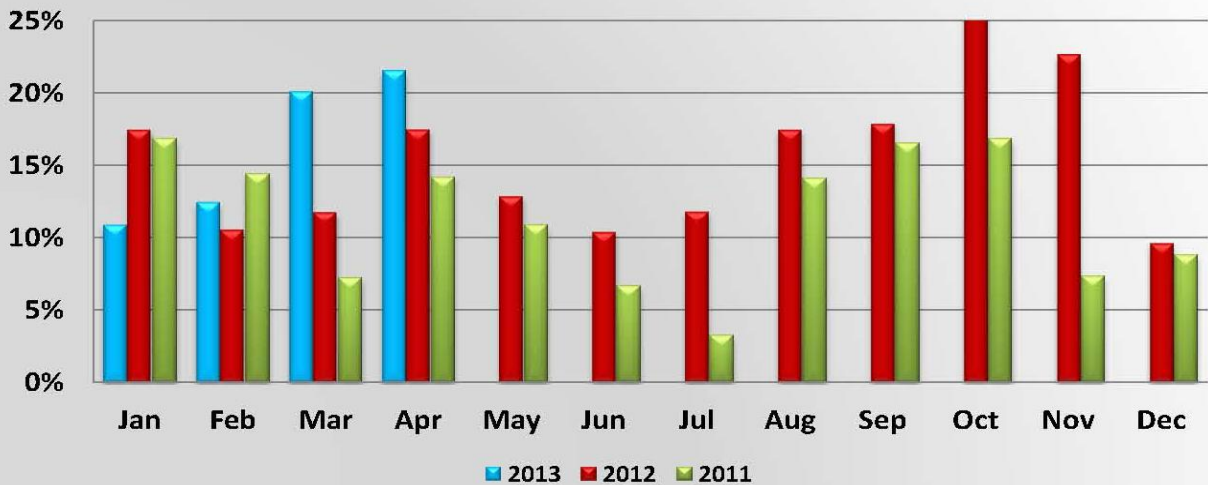
| Total Number of New CVISN Accounts | | | | | | | | | | | | | |
|------------------------------------|-----|-----|-----|-----|-----|-----|-----|-----|-----|-----|-----|-----|--------------|
| | Jan | Feb | Mar | Apr | May | Jun | Jul | Aug | Sep | Oct | Nov | Dec | Yearly Total |
| 2006 | 0 | 0 | 0 | 0 | 0 | 0 | 0 | 0 | 17 | 35 | 11 | 5 | 68 |
| 2007 | 12 | 10 | 11 | 251 | 224 | 26 | 34 | 30 | 63 | 45 | 56 | 87 | 849 |
| 2008 | 39 | 266 | 30 | 37 | 25 | 35 | 35 | 52 | 112 | 165 | 72 | 64 | 932 |
| 2009 | 69 | 75 | 65 | 88 | 81 | 426 | 149 | 119 | 129 | 125 | 95 | 169 | 1590 |
| 2010 | 77 | 153 | 273 | 382 | 202 | 205 | 234 | 256 | 304 | 347 | 346 | 364 | 3143 |
| 2011 | 295 | 278 | 388 | 177 | 114 | 170 | 194 | 208 | 309 | 233 | 204 | 234 | 2804 |
| 2012 | 356 | 313 | 295 | 256 | 345 | 281 | 300 | 279 | 238 | 544 | 235 | 248 | 3690 |
| 2013 | 469 | 374 | 406 | 402 | | | | | | | | | 1651 |

Percent of Total IFTA Tax Returns



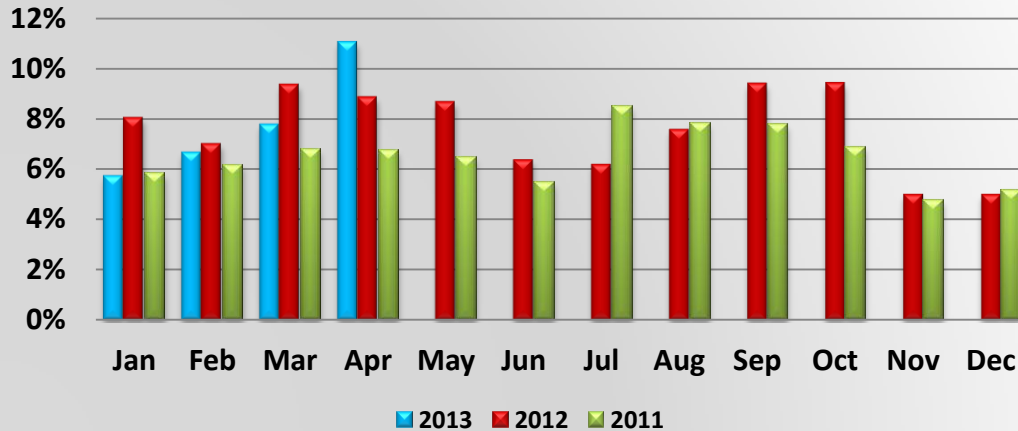
| Percent of Total IFTA Tax Returns | | | | | | | | | | | | | |
|-----------------------------------|---------|--------|---------|---------|--------|---------|---------|--------|---------|---------|--------|---------|----------|
| | Jan | Feb | Mar | Apr | May | Jun | Jul | Aug | Sep | Oct | Nov | Dec | Year End |
| 2013 | 48.125% | 9.090% | 5.818% | 29.644% | | | | | | | | | 20.571% |
| 2012 | 23.169% | 3.626% | 11.530% | 20.826% | 4.018% | 16.605% | 20.591% | 2.972% | 10.330% | 28.596% | 2.744% | 17.030% | 11.354% |
| 2011 | 23.963% | 2.272% | 6.328% | 14.413% | 3.116% | 6.117% | 14.136% | 2.440% | 7.090% | 16.900% | 2.332% | 8.517% | 7.561% |

Percent of Total IFTA Decals Issued



| Percent of Total IRP Supplements Billed thru the web | | | | | | | | | | | | | |
|--|--------|--------|--------|---------|--------|--------|--------|--------|--------|--------|--------|--------|----------|
| | Jan | Feb | Mar | Apr | May | Jun | Jul | Aug | Sep | Oct | Nov | Dec | Year End |
| 2013 | 5.732% | 6.673% | 7.778% | 11.049% | | | | | | | | | 7.792% |
| 2012 | 8.015% | 6.992% | 9.332% | 8.836% | 8.648% | 6.351% | 6.163% | 7.551% | 9.370% | 9.393% | 4.979% | 4.977% | 7.769% |
| 2011 | 5.791% | 6.163% | 6.768% | 6.720% | 6.449% | 5.458% | 8.508% | 7.800% | 7.750% | 6.880% | 4.732% | 5.174% | 6.276% |

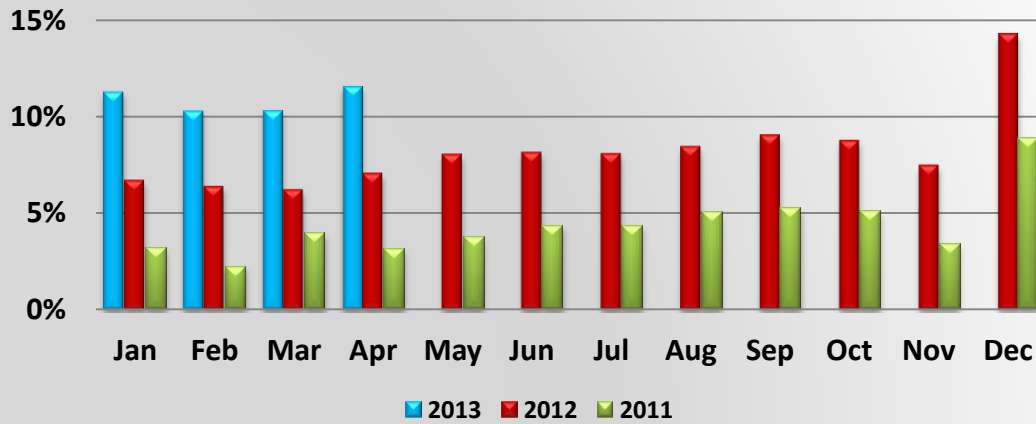
Percent of Total IRP Supplements Billed thru the web



Percent of Total IRP Supplements Billed thru the web

| | Jan | Feb | Mar | Apr | May | Jun | Jul | Aug | Sep | Oct | Nov | Dec | Year End |
|-------------|--------|--------|--------|---------|--------|--------|--------|--------|--------|--------|--------|--------|----------|
| 2013 | 5.732% | 6.673% | 7.778% | 11.049% | | | | | | | | | 7.792% |
| 2012 | 8.015% | 6.992% | 9.332% | 8.836% | 8.648% | 6.351% | 6.163% | 7.551% | 9.370% | 9.393% | 4.979% | 4.977% | 7.769% |
| 2011 | 5.791% | 6.163% | 6.768% | 6.720% | 6.449% | 5.458% | 8.508% | 7.800% | 7.750% | 6.880% | 4.732% | 5.174% | 6.276% |

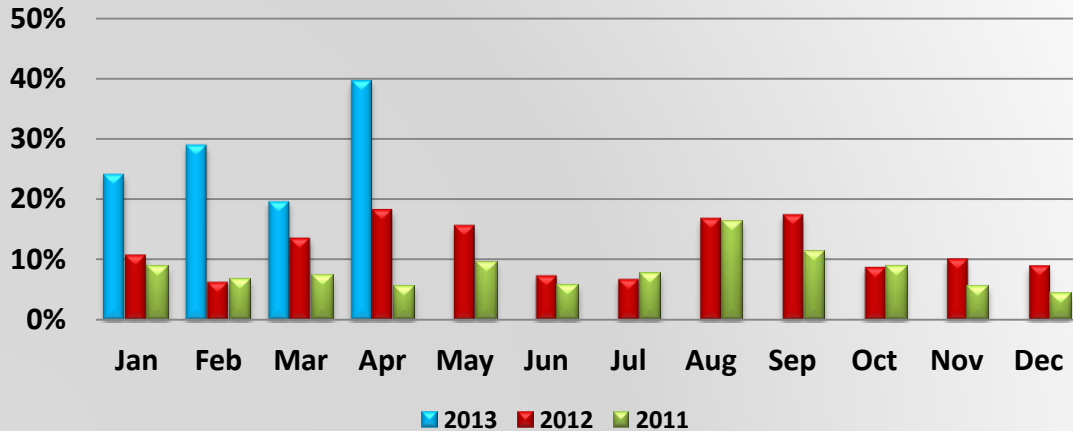
Percent of Total IRP Supplements paid thru the web



Percent of Total IRP Supplements paid thru the web

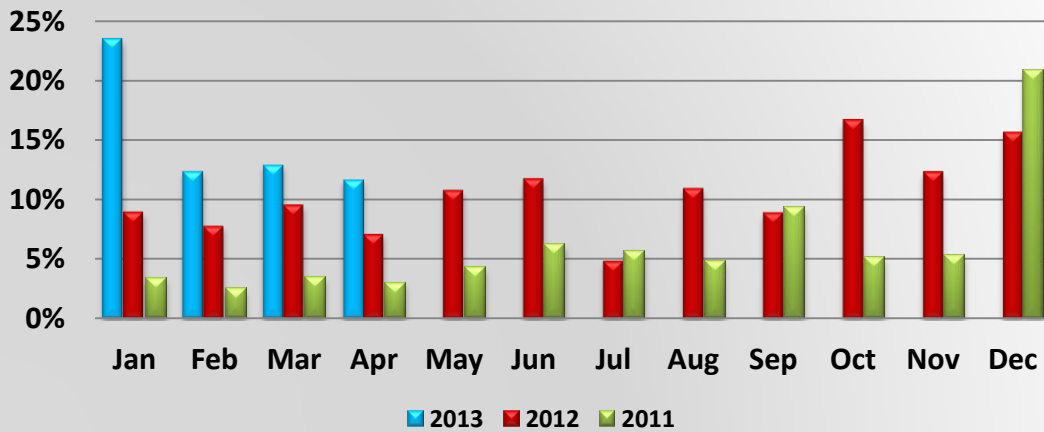
| | Jan | Feb | Mar | Apr | May | Jun | Jul | Aug | Sep | Oct | Nov | Dec | Year End |
|-------------|---------|---------|---------|---------|--------|--------|--------|--------|--------|--------|--------|---------|----------|
| 2013 | 11.273% | 10.294% | 10.311% | 11.553% | | | | | | | | | 10.870% |
| 2012 | 6.706% | 6.393% | 6.227% | 7.072% | 8.056% | 8.163% | 8.085% | 8.455% | 9.051% | 8.763% | 7.490% | 14.267% | 7.906% |
| 2011 | 3.192% | 2.199% | 3.937% | 3.112% | 3.731% | 4.344% | 4.324% | 5.040% | 5.230% | 5.050% | 3.359% | 8.854% | 4.203% |

Percent of Total IRP Registrations billed thru the web



| Percent of Total IRP Registrations billed thru the web | | | | | | | | | | | | | |
|--|---------|---------|---------|---------|---------|--------|--------|---------|---------|--------|---------|--------|----------|
| | Jan | Feb | Mar | Apr | May | Jun | Jul | Aug | Sep | Oct | Nov | Dec | Year End |
| 2013 | 24.133% | 28.933% | 19.583% | 39.600% | | | | | | | | | 27.815% |
| 2012 | 10.699% | 6.235% | 13.499% | 18.173% | 15.528% | 7.329% | 6.737% | 16.700% | 17.328% | 8.720% | 10.069% | 8.967% | 11.395% |
| 2011 | 8.851% | 6.720% | 7.233% | 5.590% | 9.558% | 5.777% | 7.585% | 16.310% | 11.300% | 8.830% | 5.534% | 4.278% | 8.154% |

Percent of Total IRP Registrations paid thru the web



| Percent of Total IRP Registrations paid thru the web | | | | | | | | | | | | | |
|--|---------|---------|---------|---------|---------|---------|--------|---------|--------|---------|---------|---------|----------|
| | Jan | Feb | Mar | Apr | May | Jun | Jul | Aug | Sep | Oct | Nov | Dec | Year End |
| 2013 | 23.493% | 12.356% | 12.898% | 11.666% | | | | | | | | | 15.692% |
| 2012 | 8.946% | 7.756% | 9.534% | 7.097% | 10.757% | 11.714% | 4.858% | 10.915% | 8.888% | 16.638% | 12.307% | 15.586% | 10.065% |
| 2011 | 3.341% | 2.448% | 3.432% | 2.966% | 4.268% | 6.195% | 5.610% | 4.860% | 9.340% | 5.110% | 5.315% | 20.793% | 5.529% |

Total Number of IRP Registrations Billed thru the Web



| | CVISN | | | | |
|------|--------------|---------|-------------------|---------|-----------------------|
| | Jurisdiction | Vehicle | Duplicate Cabcard | Renewal | Transfer Registration |
| 2008 | 3 | 38 | 2 | 492 | 4 |
| 2009 | 212 | 89 | 29 | 1487 | 33 |
| 2010 | 312 | 495 | 27 | 3311 | 214 |
| 2011 | 204 | 400 | 15 | 3396 | 113 |
| 2012 | 504 | 427 | 7 | 5067 | 168 |
| 2013 | 94 | 236 | 10 | 1657 | 124 |

| TOTAL CVISN transactions | Legacy transactions | % of CVISN transactions |
|--------------------------|---------------------|-------------------------|
| 539 | 52707 | 1.01% |
| 1850 | 44998 | 3.95% |
| 4359 | 42780 | 9.25% |
| 4128 | 46500 | 8.15% |
| 5769 | 44860 | 11.39% |
| 4360 | 11315 | 27.81% |