

Florida CVISN Team Meeting
Wednesday, March 13, 10:00 am to 12:00 pm

Conference Room 308
3rd Floor in the Rhyne Building
2740 Centerview Drive, Tallahassee, FL 32399

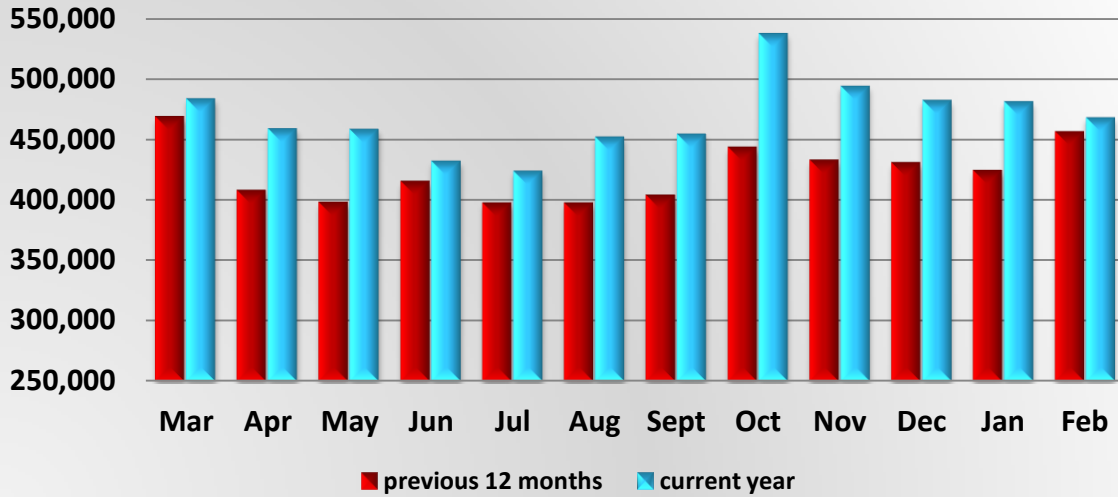
Teleconference: 850-414-4973; Toll Free: 866-374-3368 ext. 4973



AGENDA

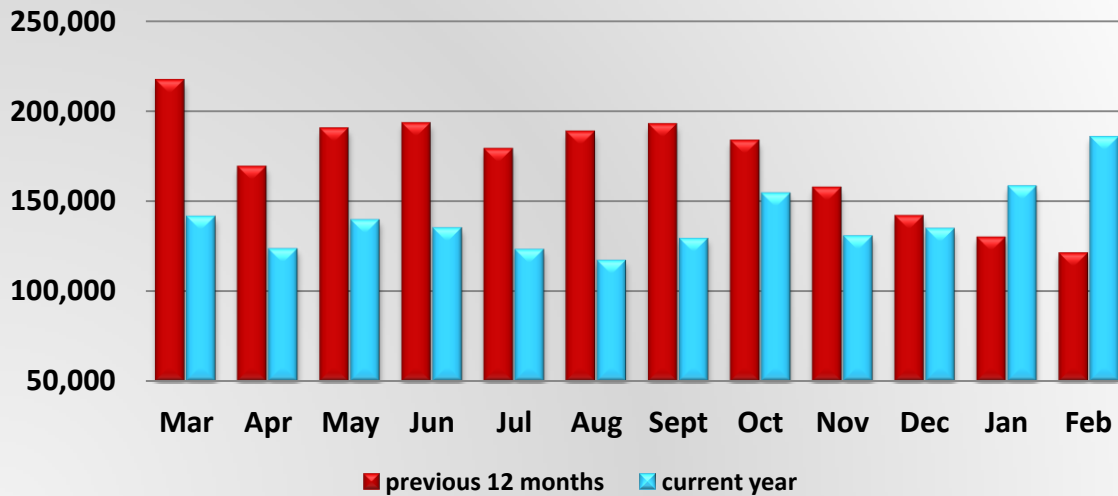
1. Welcome and Introductions *Paul Clark*
2. Current Project updates and/or discussion
 - a. Pre-Clearance at Motor Carrier Compliance Weigh Stations *Keith Westphal*
 - b. Pre-clearance at Ag. Sites *Tim Rutherford*
 - c. Permitting System Enhancements Project *Bryan Hubbard*
 - FY2007 project update
 - FY2011 project update
 - d. Automated Permitting System Utilization *Veronica Martin*
 - e. BOL Program *Lynn McElroy*
 - Use tax collections (Total and CVISN-BOL)
 - Automated BOL processing system
 - Other activities
 - f. E-Credentialing System Usage Stats *David Helton*
 - g. VWS deployment (Palm Coast Pkwy & CR484 projects) *Craig Wilson*
 - h. Port of Entry Study *Paul Clark*
 - i. Container Number Database & LPR System Hosting (O&M) Update *Paul Clark/Clay Packard*
 - j. LPR/PRISM Project (MCSAW) *Paul Clark/Clay Packard*
 - k. LPR/PRISM Project (DACs) *Pati Lytle*
 - l. Florida Expanded CVISN Program/
Top Level Design Document Update *Paul Clark*
3. Trucking Industry Update *Mary Lou Rajchel/Dianna White*
4. CVISN Grants *Paul Clark/Group*
 - a. FY2011 and FY2012 grant project schedule updates
 - b. FY2011 grant - \$280K reallocation of funds (amendment)
 - c. FY2007 grant Time extension grant amendment status
 - d. Florida FY2011 CVISN Grant Amendment – Reallocation of \$280,000
5. Website Modifications *Paul Clark*
6. Other items *Group*
7. Next CVISN meeting *Group*

MCSAW Prepass Bypass Activity



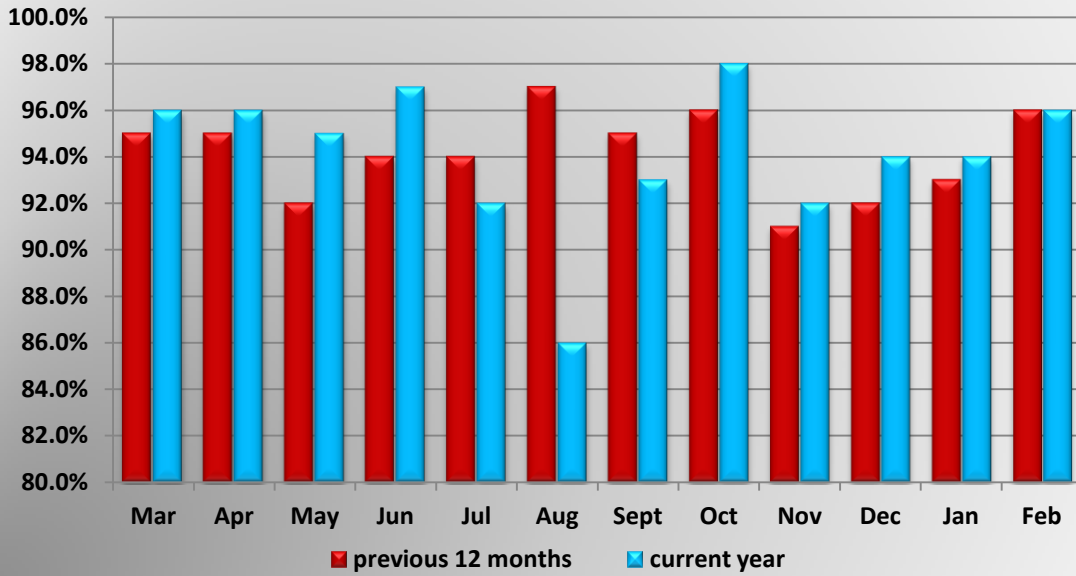
MCSAW Prepass Bypass Activity												
	Mar	Apr	May	Jun	Jul	Aug	Sept	Oct	Nov	Dec	Jan	Feb
Mar 11 - Feb 12	468,434	407,752	397,792	415,044	397,423	397,423	403,656	443,104	432,560	430,506	424,196	456,051
Mar 12 - Feb 13	483,690	459,015	458,436	431,981	423,953	451,909	454,295	537,351	494,032	482,138	481,110	468,032

MCSAW PrePass Pull-in Activity



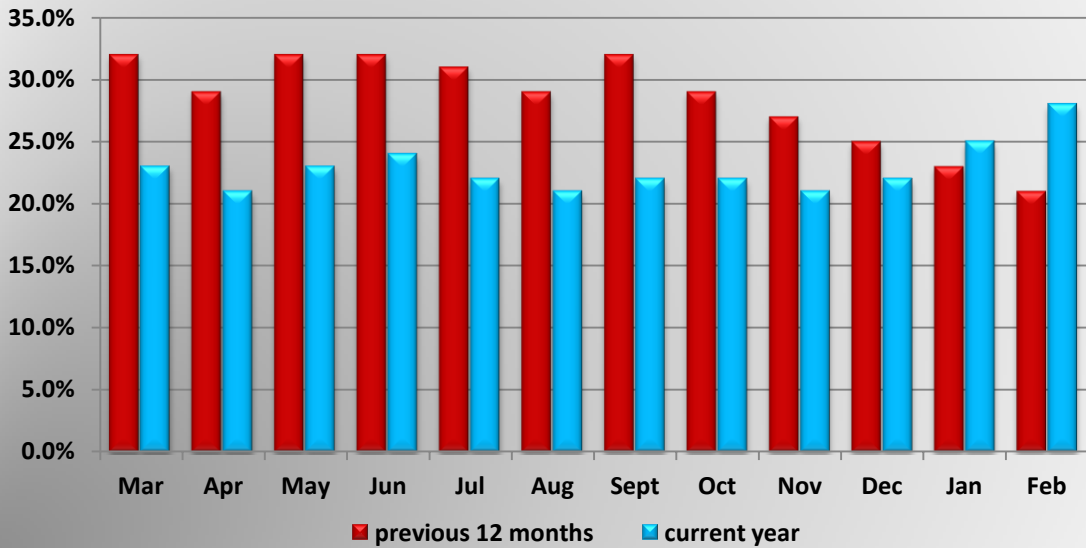
MCSAW PrePass Pull-in Activity												
	Mar	Apr	May	Jun	Jul	Aug	Sept	Oct	Nov	Dec	Jan	Feb
Mar 11 - Feb 12	216,792	169,029	190,175	193,057	178,712	188,443	192,475	183,362	157,459	141,781	129,843	121,142
Mar 12 - Feb 13	141,359	123,383	139,364	134,974	123,015	117,066	129,105	154,280	130,476	134,601	158,085	185,311

MCSAW Bypass Open Percentage



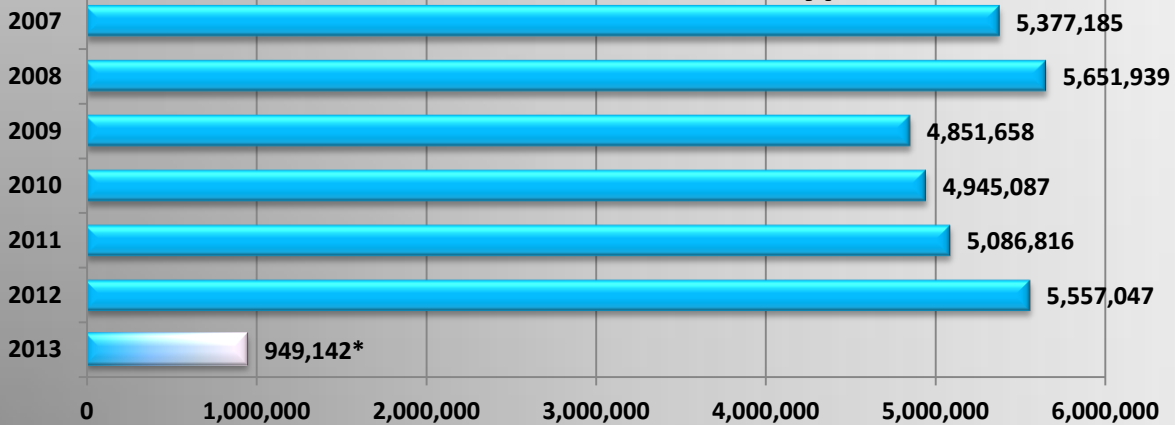
MCSAW Bypass Open Percentage												
	Mar	Apr	May	Jun	Jul	Aug	Sept	Oct	Nov	Dec	Jan	Feb
Mar 11 - Feb 12	95.0%	95.0%	92.0%	94.0%	94.0%	97.0%	95.0%	96.0%	91.0%	92.0%	93.0%	96.0%
Mar 12 - Feb 13	96.0%	96.0%	95.0%	97.0%	92.0%	86.0%	93.0%	98.0%	92.0%	94.0%	94.0%	96.0%

MCSAW Pull-in Percentage



MCSAW Pull-in Percentage												
	Mar	Apr	May	Jun	Jul	Aug	Sept	Oct	Nov	Dec	Jan	Feb
Mar 11 - Feb 12	32.0%	29.0%	32.0%	32.0%	31.0%	29.0%	32.0%	29.0%	27.0%	25.0%	23.0%	21.0%
Mar 12 - Feb 13	23.0%	21.0%	23.0%	24.0%	22.0%	21.0%	22.0%	22.0%	21.0%	22.0%	25.0%	28.0%

MCSAW Annual Number of Bypasses

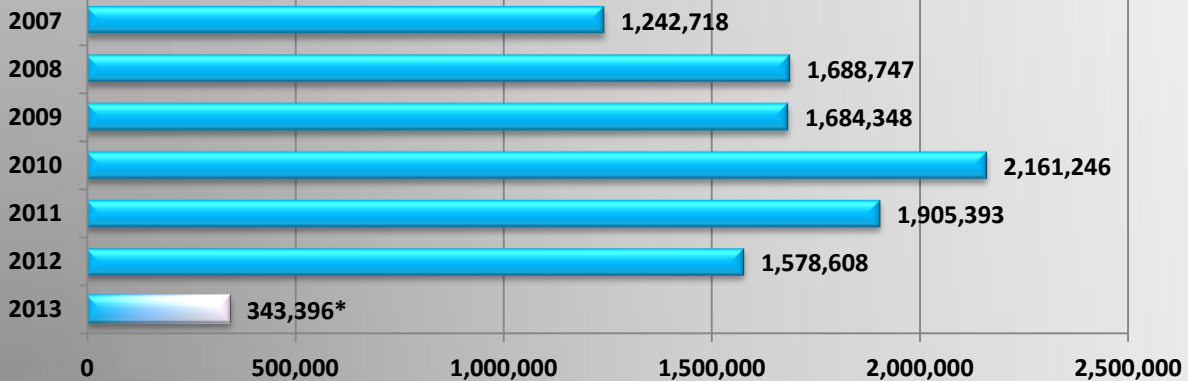


*as of 2/2013

MCSAW Pull-in Percentage

	Jan	Feb	Mar	Apr	May	Jun	Jul	Aug	Sept	Oct	Nov	Dec	Annual Total
2007	434,899	397,084	434,543	430,912	486,536	425,364	419,389	467,265	447,173	527,342	453,986	452,692	5,377,185
2008	489,394	484,542	532,791	525,044	490,390	457,809	455,435	459,515	456,681	475,878	403,221	421,239	5,651,939
2009	411,421	420,864	469,064	449,240	431,090	413,693	415,841	403,031	363,993	401,315	340,588	331,518	4,851,658
2010	361,417	408,853	468,558	432,933	426,150	404,527	380,849	433,326	388,358	440,847	386,897	412,372	4,945,087
2011	411,467	425,841	468,434	407,752	397,792	415,044	397,423	453,237	403,656	443,104	432,560	430,506	5,086,816
2012	424,196	456,051	483,690	459,015	458,436	431,981	423,953	451,909	454,295	537,351	494,032	482,138	5,557,047
2013	481,110	468,032											949,142

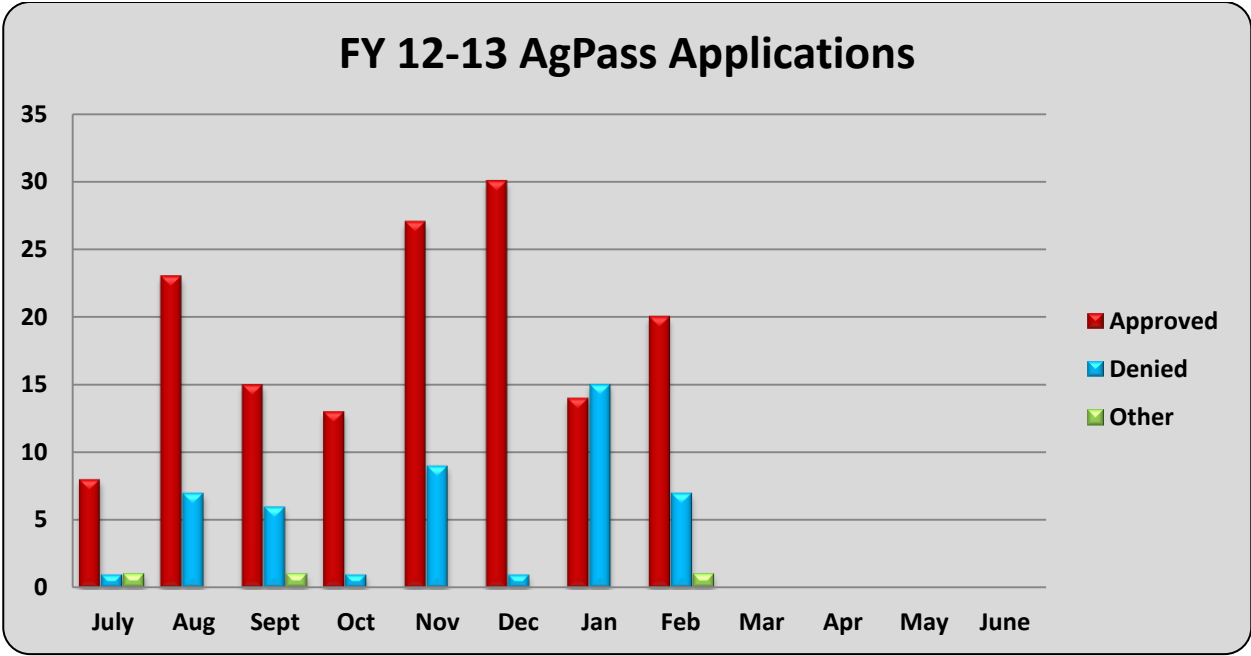
MCSAW Annual Number of Pull-ins



*as of 2/2013

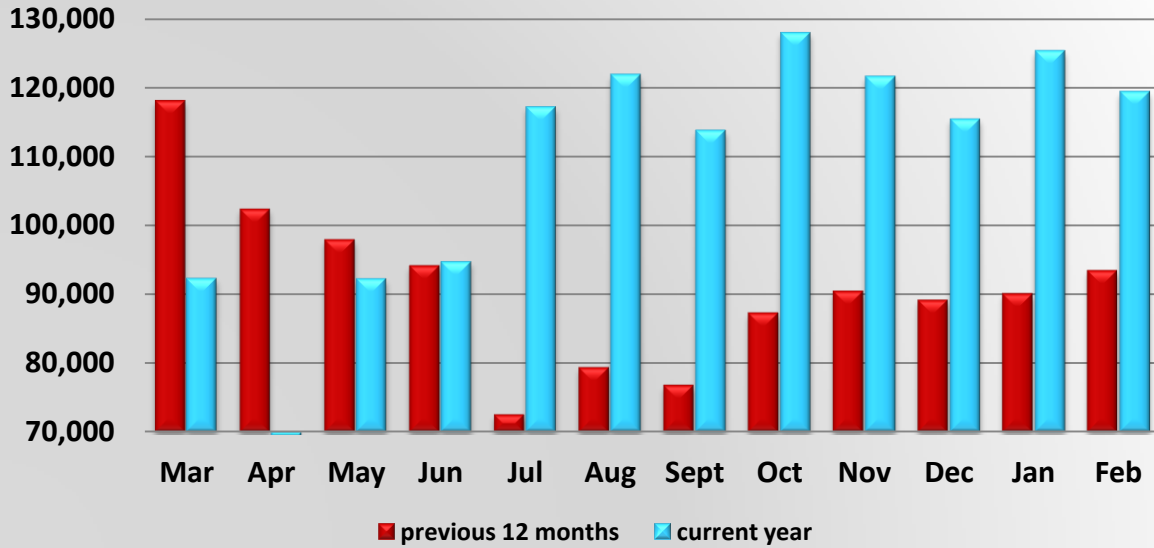
MCSAW Pull-in Percentage

	Jan	Feb	Mar	Apr	May	Jun	Jul	Aug	Sept	Oct	Nov	Dec	Annual Total
2007	91,735	88,375	92,004	98,699	101,536	117,960	105,135	109,083	100,566	116,166	110,385	111,074	1,242,718
2008	138,519	139,299	142,793	146,229	135,479	152,715	142,529	136,499	142,438	163,563	128,318	120,366	1,688,747
2009	120,236	122,907	120,595	107,865	103,045	129,064	115,358	136,281	211,640	183,764	166,996	166,597	1,684,348
2010	163,055	171,638	193,256	183,865	186,093	188,705	180,795	192,924	167,170	179,350	157,545	196,850	2,161,246
2011	208,712	184,650	216,792	169,025	190,175	193,057	178,712	188,433	192,475	183,362	157,459	141,781	2,204,633
2012	129,843	121,142	141,359	123,383	139,364	134,974	123,015	117,066	129,105	154,280	130,476	134,601	1,578,608
2013	158,085	185,311											343,396



FY 12-13 AgPass Applications													
	July	Aug	Sept	Oct	Nov	Dec	Jan	Feb	Mar	Apr	May	June	Total
Approved	8	23	15	13	27	30	14	20					150
Denied	1	7	6	1	9	1	15	7					47
Other	1	0	1	0	0	0	0	1					3

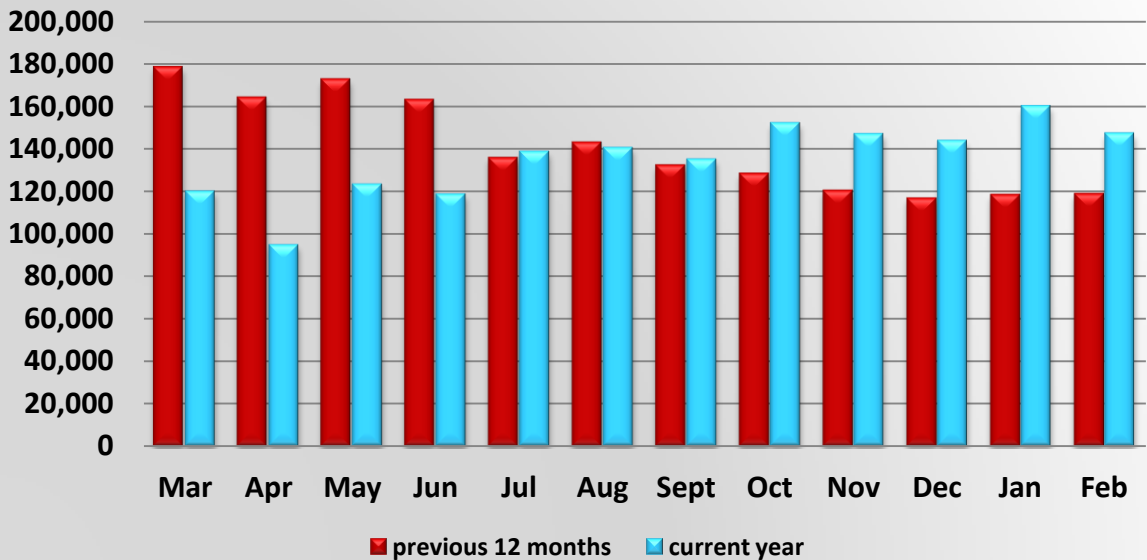
AgPass Bypass Activity at DACS Agricultural Interdiction Stations



DACS Bypass Activity

	Mar	Apr	May	Jun	Jul	Aug	Sept	Oct	Nov	Dec	Jan	Feb
Mar 11 - Feb 12	118,092	102,374	97,939	94,157	72,569	79,421	76,843	87,313	90,492	89,218	90,143	93,478
Mar 12 - Feb 13	92,337	69,258	92,252	94,754	117,174	121,869	113,762	127,956	121,621	115,424	125,347	119,427

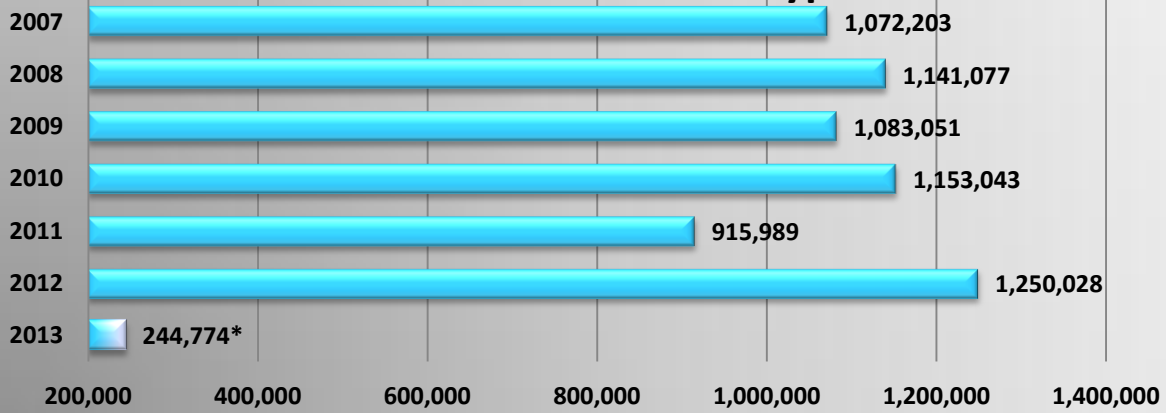
AgPass Pullin Activity at DACS Agricultural Interdiction Stations



DACS Pull-in Activity

	Mar	Apr	May	Jun	Jul	Aug	Sept	Oct	Nov	Dec	Jan	Feb
Mar 11 - Feb 12	178,508	164,130	172,769	163,159	135,800	143,144	132,353	128,432	120,422	116,852	118,560	118,906
Mar 12 - Feb 13	120,054	94,777	123,375	118,655	138,763	140,553	135,022	152,085	146,999	143,781	160,122	147,237

Annual Number of DACS Bypasses

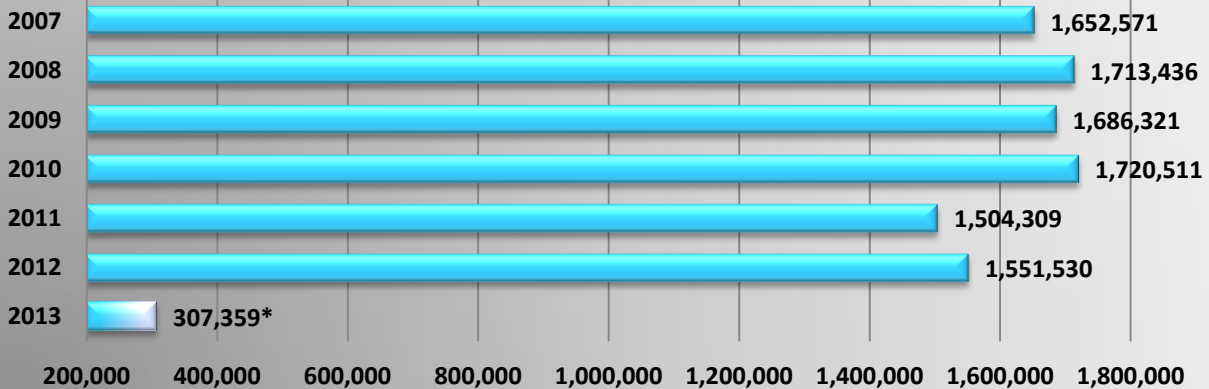


*as of 2/2013

Annual Number of DACS Bypasses

	Jan	Feb	Mar	Apr	May	Jun	Jul	Aug	Sept	Oct	Nov	Dec	Annual Total
2007	86,873	84,088	94,972	87,789	90,224	87,433	79,729	95,603	86,997	101,657	90,637	86,201	1,072,203
2008	96,240	93,649	97,911	96,915	98,420	95,559	97,641	92,288	96,633	98,665	88,397	88,759	1,141,077
2009	90,602	86,245	95,185	94,608	87,595	90,735	93,224	91,820	91,337	88,385	84,581	88,734	1,083,051
2010	91,125	87,391	100,842	94,969	101,303	100,963	98,428	89,895	91,337	101,814	105,535	89,441	1,153,043
2011	87,027	100,254	118,092	102,374	97,939	94,157	72,569	79,421	76,843	87,313	90,492	89,218	1,095,699
2012	90,143	93,478	92,337	69,258	92,252	94,754	117,174	121,869	113,762	127,956	121,621	115,424	1,250,028
2013	125,347	119,427											244,774

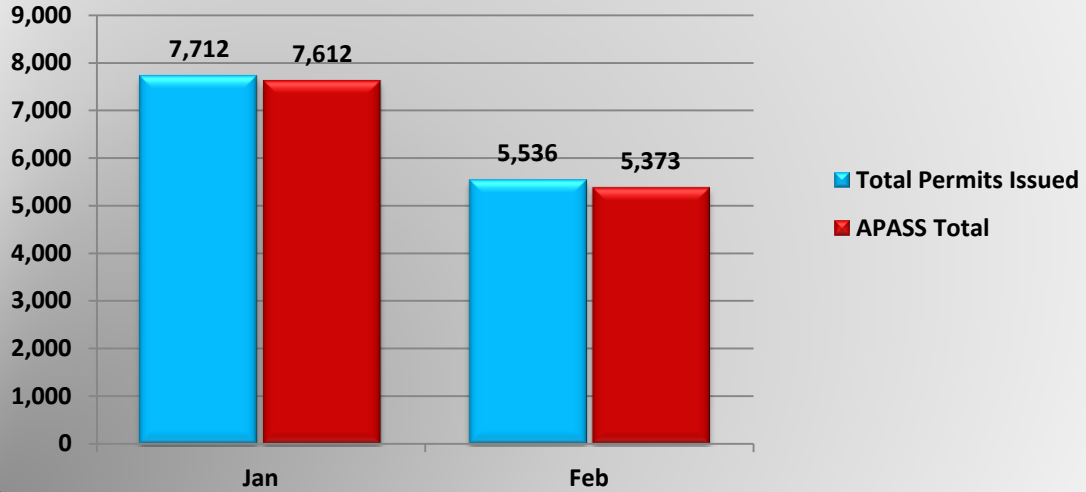
Annual Number of DACS Pull-ins



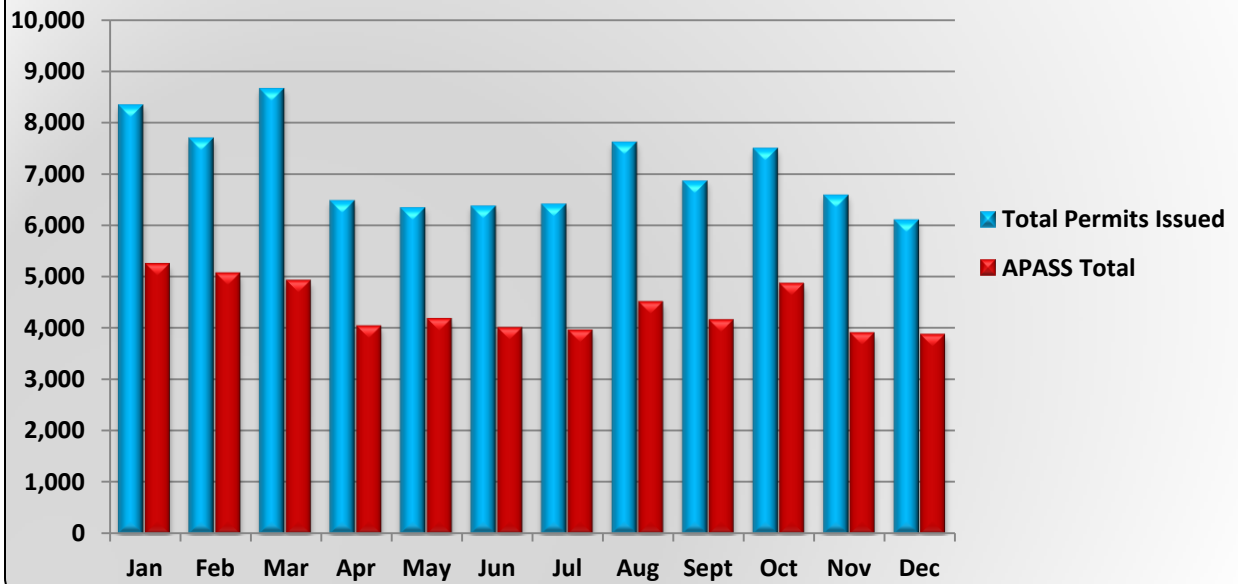
Annual Number of DACS Pull-ins

	Jan	Feb	Mar	Apr	May	Jun	Jul	Aug	Sept	Oct	Nov	Dec	Annual Total
2007	134,236	121,120	142,237	138,935	142,799	140,674	133,442	145,725	134,935	146,289	138,235	133,944	1,652,571
2008	146,630	141,316	149,368	145,574	147,638	147,834	143,733	135,975	141,134	146,775	131,546	135,913	1,713,436
2009	141,245	133,916	150,454	144,069	139,298	141,052	137,679	136,753	135,172	143,574	138,080	145,029	1,686,321
2010	140,006	134,375	153,339	142,969	158,681	157,905	150,122	142,774	132,861	138,138	133,597	135,744	1,720,511
2011	135,389	150,625	178,508	164,130	172,769	163,159	135,800	143,144	132,353	128,432	120,422	116,852	1,741,583
2012	118,560	118,906	120,054	94,777	123,375	118,655	138,763	140,553	135,022	152,085	146,999	143,781	1,551,530
2013	160,122	147,237											307,359

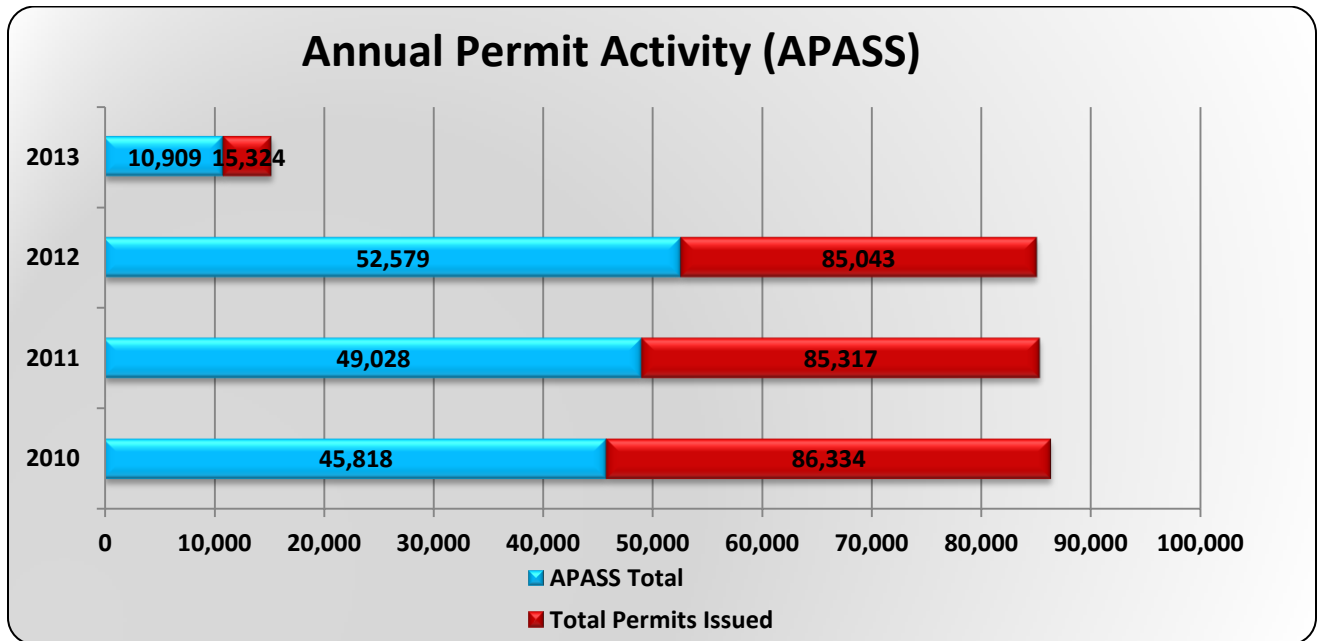
2013 Permit Activity (APASS)



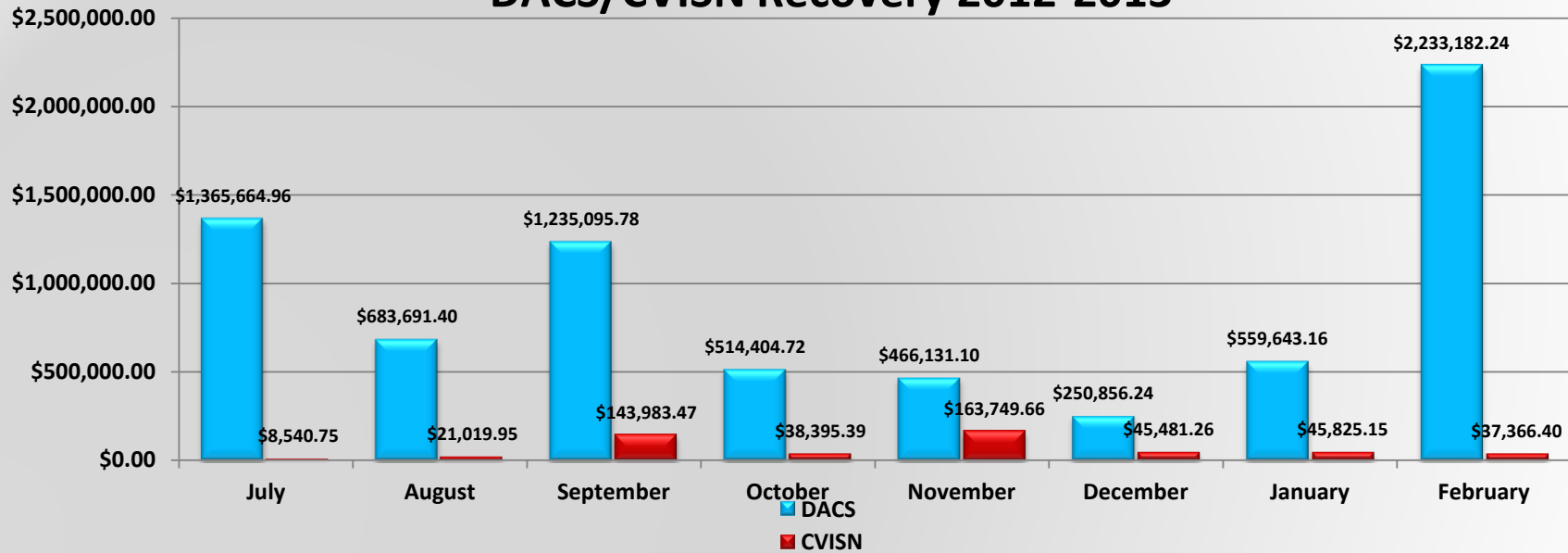
2012 Permit Activity (APASS)



2012 PERMIT ACTIVITY (APASS)			
Month	Total Permits Issued	APASS Total	% APASS
Jan	8,347	5,232	62.7%
Feb	7,701	5,053	65.6%
Mar	8,665	4,905	56.6%
Apr	6,486	4,026	62.1%
May	6,350	4,168	65.6%
Jun	6,380	3,996	62.6%
Jul	6,417	3,946	61.5%
Aug	7,622	4,494	59.0%
Sept	6,869	4,149	60.4%
Oct	7,501	4,852	64.7%
Nov	6,593	3,894	59.1%
Dec	6,112	3,864	63.2%
TOTALS	85,043	52,579	61.8%

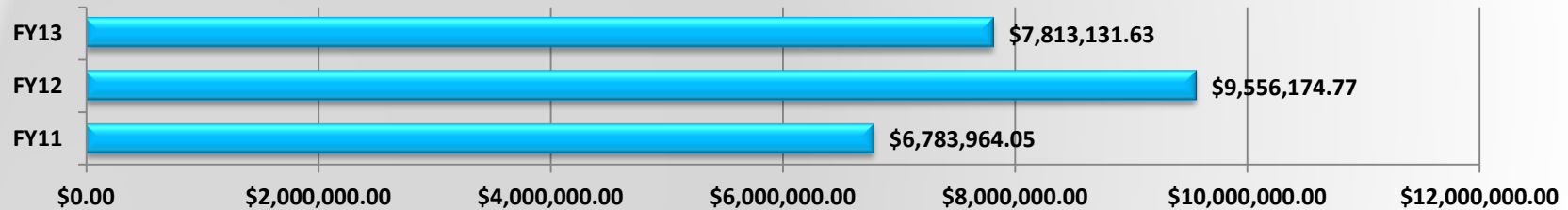


DACS/CVISN Recovery 2012-2013



	July	August	September	October	November	December	January	February
DACS	\$1,365,664.96	\$683,691.40	\$1,235,095.78	\$514,404.72	\$466,131.10	\$250,856.24	\$559,643.16	\$2,233,182.24
CVISN	\$8,540.75	\$21,019.95	\$143,983.47	\$38,395.39	\$163,749.66	\$45,481.26	\$45,825.15	\$37,366.40
TOTAL	\$1,374,205.71	\$704,711.35	\$1,379,079.25	\$552,800.11	\$629,880.76	\$296,337.50	\$605,468.31	\$2,270,548.64

DACS/CVISN Recovery Fiscal Year Comparison



DACS/CVISN Recovery Fiscal Year Comparison

	July	August	September	October	November	December	January	February	March	April	May	June	Total
FY11	\$353,433.87	\$760,489.37	\$523,100.55	\$867,595.54	\$410,540.20	\$558,302.03	\$524,465.52	\$382,351.13	\$1,049,620.11	\$584,041.66	\$321,465.40	\$448,558.67	\$6,783,964.05
FY12	\$342,791.47	\$644,854.74	\$324,936.80	\$365,875.32	\$214,115.09	\$524,767.66	\$595,744.55	\$1,161,977.48	\$2,969,689.16	\$1,411,496.60	\$451,715.25	\$548,210.65	\$9,556,174.77
FY13	\$1,374,205.71	\$704,711.35	\$1,379,079.25	\$552,800.11	\$629,880.76	\$296,437.50	\$605,468.31	\$2,270,548.64					\$7,813,131.63