

Florida CVISN Team Meeting
Thursday, October 27, 2011, 10:00am to noon
Conference Room #330, 3rd Floor in the Rhyne Building
2740 Centerview Drive, Tallahassee, FL 32399



Meeting Call in: Local: 850-410-5666; Toll Free: 866-374-3368 ext 5666

AGENDA

- | | |
|--|--------------------------------------|
| 1. Welcome and Introductions | <i>Paul Clark</i> |
| 2. Current Project updates and/or discussion | |
| a. Pre-Clearance at Motor Carrier Compliance Weigh Stations | <i>Clayton Tyson</i> |
| b. Pre-clearance at Ag. Sites | <i>Tim Rutherford</i> |
| c. Permitting System Enhancements Project | <i>Bryan Hubbard</i> |
| d. Automated Permitting System Utilization | <i>Veronica Martin</i> |
| e. BOL Program | <i>Lynn McElroy</i> |
| - Use tax collections (Total and CVISN-BOL) | |
| - Automated BOL processing system | |
| - Other activities | |
| f. E-Credentialing System Usage Stats | <i>Clem Novenario/Heather Nelson</i> |
| g. PRISM Implementation | <i>David Helton/Clem Novenario</i> |
| h. OMCC VWS deployment | <i>Craig Wilson</i> |
| i. EFTMS Upgrade Project | <i>Paul Clark</i> |
| j. Florida Trucking Info Help Desk Phone Activity | <i>Sharon Easley</i> |
| k. Port of Entry Study | <i>Richard Easley</i> |
| 3. Trucking Industry Update | <i>Mary Lou Rajchel/Dianna White</i> |
| 4. Other items | <i>Group</i> |
| a. ITS World Congress demonstrations Debrief | <i>Craig Wilson/Paul Clark</i> |
| 5. Work session – FFY 2012 CVISN Grant project prioritization | |
| a. Listing of CVISN team member proposed projects | |
| b. Prioritization of proposed projects | |
| c. Selection of 2012 CVISN Grant Application projects | <i>Group</i> |
| 6. Scheduled CVISN meetings (Next Quarterly Meeting Date/Time TBD) | <i>Group</i> |

January 2012						
Su	Mo	Tu	We	Th	Fr	Sa
1	2	3	4	5	6	7
8	9	10	11	12	13	14
15	16	17	18	19	20	21
22	23	24	25	26	27	28
29	30	31	1	2	3	4

NOTE: TRB conf 1/22-1/26/2012

Monthly PrePass Update

FY: **2011/2012**

	July	Aug	Sept	Oct	Nov	Dec	Jan	Feb	Mar	Apr	May	June
Received Applications:	27	25										
Approved Applications:	25	21										
Denied Applications:	2	3										
Other Applications:	0	1										

Total Applications Received for FY:	52
Total Number of Approvals for FY:	46
Total Number of Denials for FY:	5
Total Number of Other for FY:	1

Total Number of Applications Received Since June 2002 to Date:	4,476
Total Number of Approvals Since June 2002 to Date:	3,011
Total Number of Denials Since June 2002 to Date:	1110
Total Number of Other since June 2002 to Date:	335

	July	Aug	Sept	Oct	Nov	Dec	Jan	Feb	Mar	Apr	May	June
PrePass Trucks ByPassed Station:	72,569	79,421	76,843	87,313	90,492	89,218						
Total PrePass ByPassed Sta for FY:	495,856											

*** **Other** category is applications that have been requested discarded, no signatures, unable to contact, being worked...

CVISN

Quarterly Report

October 27, 2011

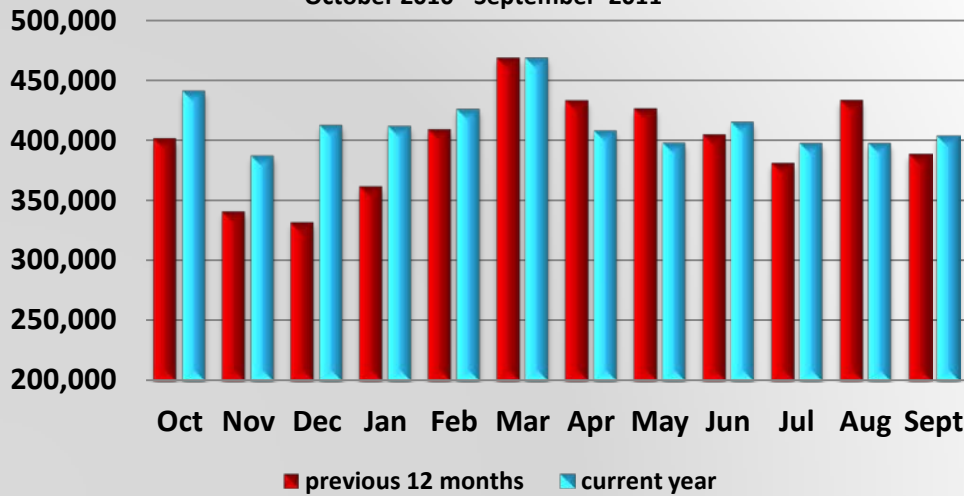


Publication of:

*Florida Department of Transportation
Commercial Vehicle Operations and Traffic Incident Management Program
605 Suwannee Street, MS 90
Tallahassee, Florida 32399*

OMCC Prepass Bypass Activity

October 2010 - September 2011



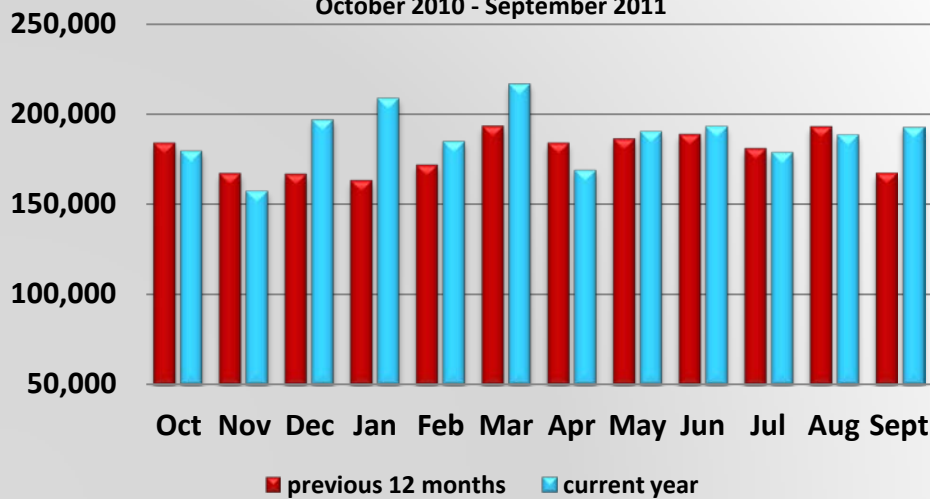
Description -

OMCC Prepass Bypass Activity

	Oct	Nov	Dec	Jan	Feb	Mar	Apr	May	Jun	Jul	Aug	Sept
Oct 09 - Sept 10	401,315	340,588	331,518	361,417	408,853	468,558	432,933	426,150	404,527	380,849	433,326	388,358
Oct 10 - Sept 11	440,847	386,897	412,372	411,467	425,841	468,434	407,752	397,792	415,044	397,423	397,423	403,656

OMCC PrePass Pull-in Activity

October 2010 - September 2011

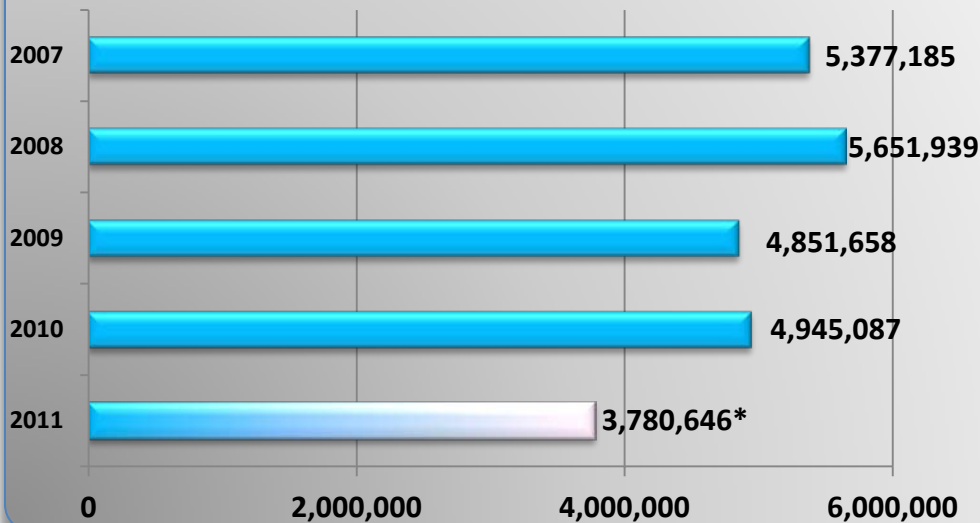


Description -

PrePass Pull-in Activity

	Oct	Nov	Dec	Jan	Feb	Mar	Apr	May	Jun	Jul	Aug	Sept
Oct 09 - Sept 10	183,764	166,996	166,597	163,055	171,638	193,256	183,865	186,093	188,705	180,795	192,924	167,170
Oct 10 - Sept 11	179,350	157,545	196,850	208,712	184,650	216,792	169,029	190,175	193,057	178,712	188,443	192,475

Annual Number of Bypasses



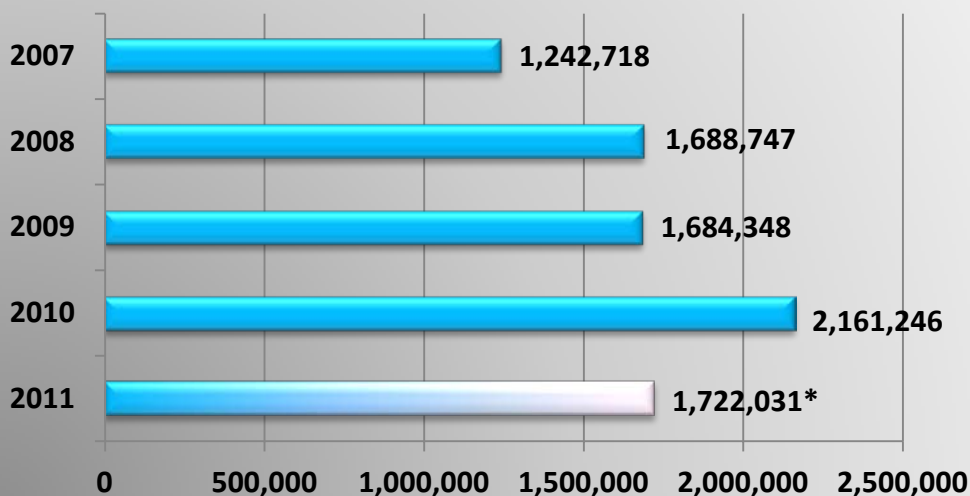
Description -

Annual Number of Bypasses at FDOT Weigh Stations

	Jan	Feb	Mar	Apr	May	Jun	Jul	Aug	Sep	Oct	Nov	Dec	Annual Total
2007	434,899	397,084	434,543	430,912	486,536	425,364	419,389	467,265	447,173	527,342	453,986	452,692	5,377,185
2008	489,394	484,542	532,791	525,044	490,390	457,809	455,435	459,515	456,681	475,878	403,221	421,239	5,651,939
2009	411,421	420,864	469,064	449,240	431,090	413,693	415,841	403,031	363,993	401,315	340,588	331,518	4,851,658
2010	361,417	408,853	468,558	432,933	426,150	404,527	380,849	433,326	388,358	440,847	386,897	412,372	4,945,087
2011	411,467	425,841	468,434	407,752	397,792	415,044	397,423	453,237	403,656				3,780,646*

*Annual total through September 30, 2011

Annual Number of Pull-ins



Description -

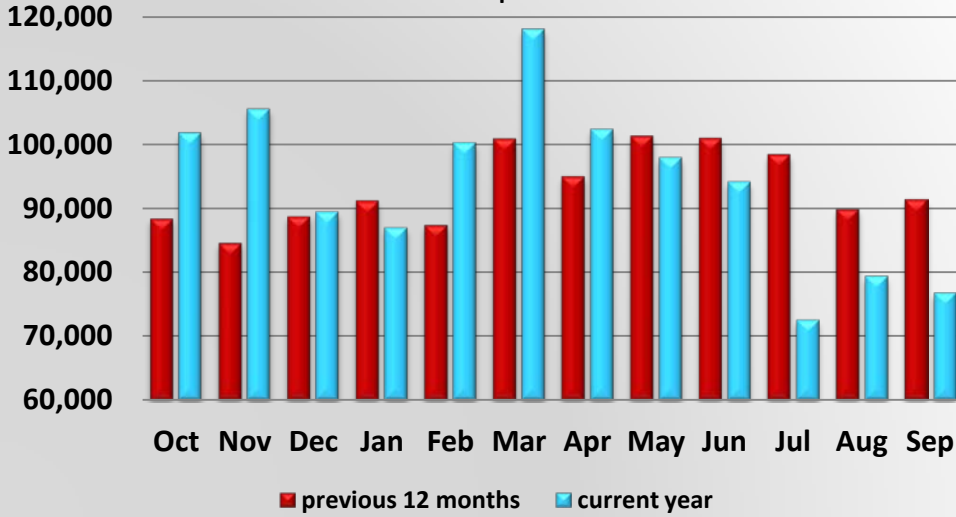
Annual Number of Pull-ins at FDOT Weigh Stations

	Jan	Feb	Mar	Apr	May	Jun	Jul	Aug	Sep	Oct	Nov	Dec	Annual Total
2007	91,735	88,375	92,004	98,699	101,536	117,960	105,135	109,083	100,566	116,166	110,385	111,074	1,242,718
2008	138,519	139,299	142,793	146,229	135,479	152,715	142,529	136,499	142,438	163,563	128,318	120,366	1,688,747
2009	120,236	122,907	120,595	107,865	103,045	129,064	115,358	136,281	211,640	183,764	166,996	166,597	1,684,348
2010	163,055	171,638	193,256	183,865	186,093	188,705	180,795	192,924	167,170	179,350	157,545	196,850	2,161,246
2011	208,712	184,650	216,792	169,025	190,175	193,057	178,712	188,433	192,475				1,722,031*

*Annual total through September 30, 2011

AgPass Bypass Activity at DACS Agricultural Interdiction Stations

October 2010 - September 2011

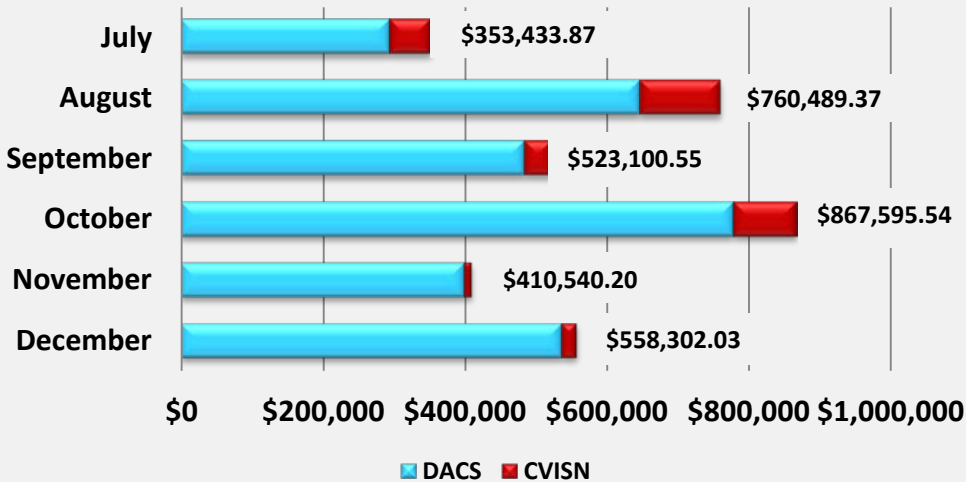


Description -

Department of Agriculture Bypass Activity

	Oct	Nov	Dec	Jan	Feb	Mar	Apr	May	Jun	Jul	Aug	Sept
Oct 09 - Sept 10	88,385	84,581	88,734	91,125	87,391	100,842	94,969	101,303	100,963	98,428	89,895	91,337
Oct 10 - Sept 11	101,814	105,535	89,441	87,027	100,254	118,092	102,374	97,939	94,157	72,569	79,421	76,843

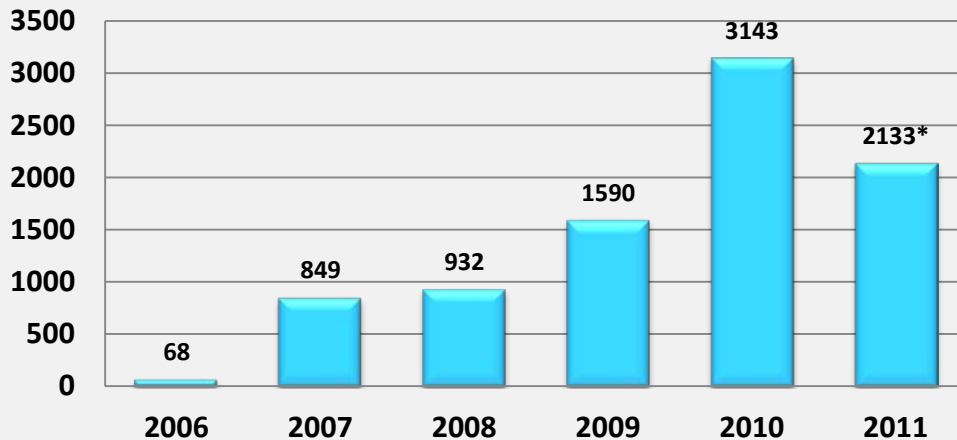
DACS/CVISN Recovery 2010-2011



Description -

	July	August	September	October	November	December
DACS	\$294,848.88	\$646,768.98	\$484,459.36	\$778,626.36	\$400,185.25	\$536,954.44
CVISN	\$58,584.99	\$113,720.39	\$38,641.19	\$88,969.18	\$10,354.95	\$21,347.59
TOTAL	\$353,433.87	\$760,489.37	\$523,100.55	\$867,595.54	\$410,540.20	\$558,302.03

Number of New CVISN Accounts at DHSMV



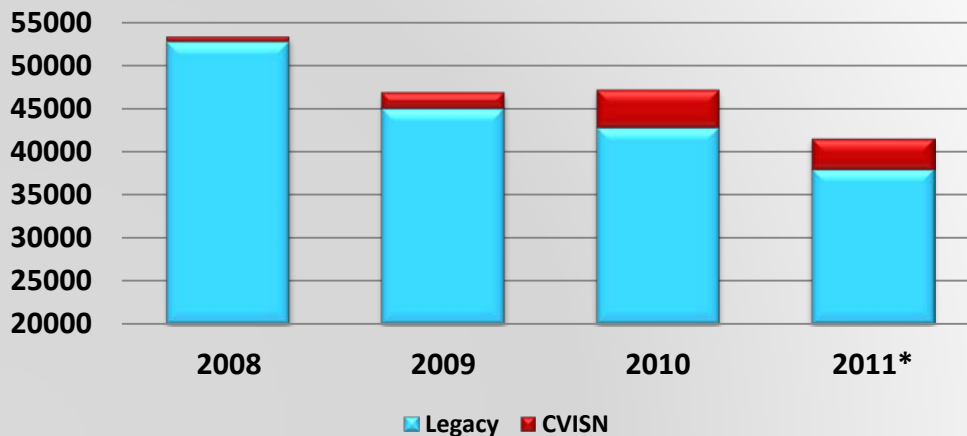
Description -

Percentage of total vehicle registrations that were paid for online (by IRP supplements being paid online).

Total Number of New CVISN Accounts													
	Jan	Feb	Mar	Apr	May	Jun	Jul	Aug	Sep	Oct	Nov	Dec	Yearly Total
2006	0	0	0	0	0	0	0	0	17	35	11	5	68
2007	12	10	11	251	224	26	34	30	63	45	56	87	849
2008	39	266	30	37	25	35	35	52	112	165	72	64	932
2009	69	75	65	88	81	426	149	119	129	125	95	169	1590
2010	77	153	273	382	202	205	234	256	304	347	346	364	3143
2011	295	278	388	177	114	170	194	208	309				2133*

*As of September 30, 2011

Total Number of IRP Registrations Billed thru the Web

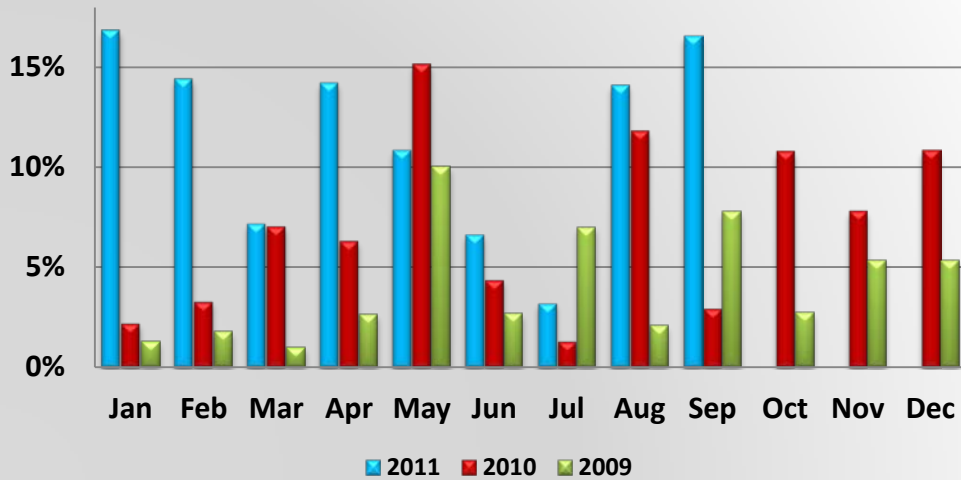


Description -

	CVISN					TOTAL CVISN transactions	Legacy transactions	% of CVISN transactions
	Jurisdiction	Vehicle	Duplicate Cabcard	Renewal	Transfer Registration			
2008	3	38	2	492	4	539	52706	1.02%
2009	212	89	29	1487	33	1850	44997	4.11%
2010	314	495	27	3314	214	4364	42777	10.20%
2011*	183	327	11	3007	76	3604	37959	9.49%

*Annual total through September 30, 2011

Percent of Total IFTA Decals Issued



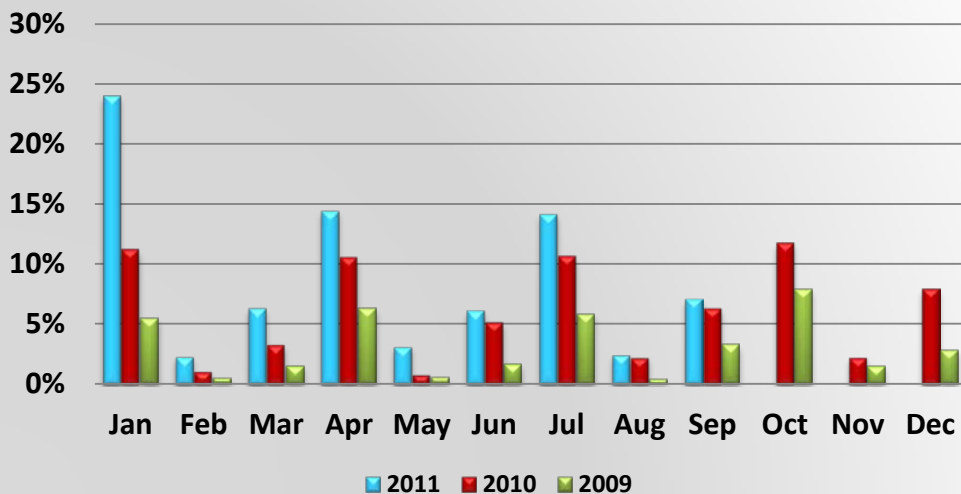
Description –

Percentage of total decals issued that were processed through the electronic credentialing system.

Percent of Total IFTA Decals from 01/01/2009 thru 9/30/2011

	Jan	Feb	Mar	Apr	May	Jun	Jul	Aug	Sep	Oct	Nov	Dec	Year End
2011	16.82%	14.40%	7.16%	14.19%	10.85%	6.63%	3.22%	14.08%	16.53%				12.56%
2010	2.20%	3.30%	7.04%	6.32%	15.12%	4.37%	1.31%	11.78%	2.93%	10.77%	7.79%	10.82%	6.98%
2009	1.29%	1.75%	0.97%	2.62%	10.04%	2.65%	7.00%	2.05%	7.79%	2.71%	5.37%	5.37%	4.13%

Percent of Total IFTA Tax Returns



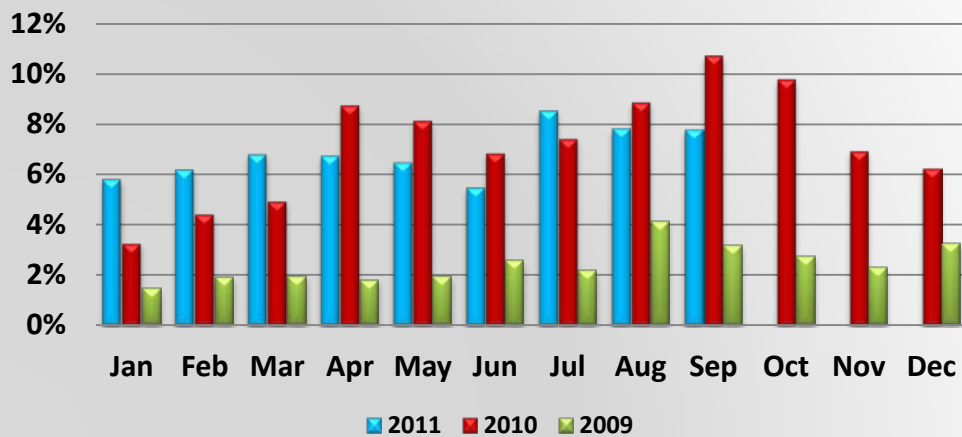
Description –

Percentage of the total IFTA Tax Returns that were processed through the electronic credentialing system.

Percent of Total IFTA Tax Returns from 01/01/2009 thru 9/30/2011

	Jan	Feb	Mar	Apr	May	Jun	Jul	Aug	Sep	Oct	Nov	Dec	Year End
2011	23.96%	2.27%	6.33%	14.41%	3.12%	6.12%	14.14%	2.44%	7.09%				8.88%
2010	11.12%	1.06%	3.25%	10.45%	0.79%	5.12%	10.57%	2.20%	6.25%	11.66%	2.23%	7.89%	6.05%
2009	5.41%	0.46%	1.45%	6.29%	0.50%	1.65%	5.79%	0.37%	3.25%	7.86%	1.45%	2.84%	3.11%

Percent of Total IRP Supplements Billed thru the Web



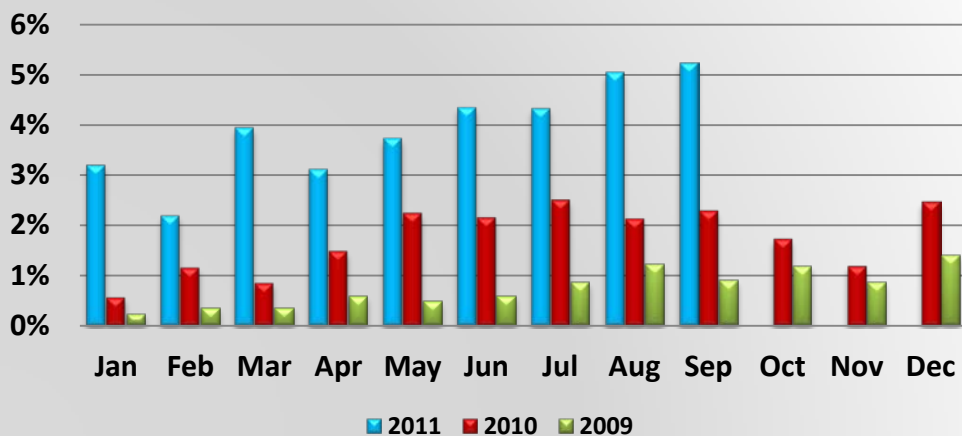
Description -

Percentage of IRP supplement bills that were calculated, estimated online. Companies enter their information and a bill is produced for what they owe for their IRP supplement transaction(s).

Percent of Total IRP Supplements Billed thru the web

	Jan	Feb	Mar	Apr	May	Jun	Jul	Aug	Sep	Oct	Nov	Dec	Year End
2011	5.79%	6.16%	6.77%	6.72%	6.45%	5.46%	8.51%	7.80%	7.75%				6.82%
2010	3.26%	4.43%	4.93%	8.73%	8.12%	6.82%	7.39%	8.85%	10.71%	9.76%	6.91%	6.22%	7.18%
2019	1.44%	1.90%	1.93%	1.78%	1.94%	2.56%	2.16%	4.14%	3.18%	2.75%	2.30%	3.27%	2.44%

Percent of Total IRP Supplements paid thru the Web



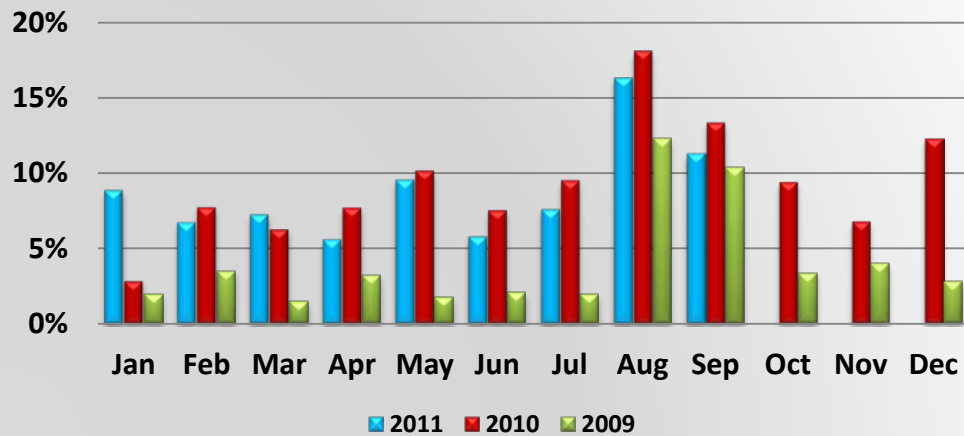
Description -

Percentage of IRP supplements paid using the online payment option after an online bill is produced.

Percent of Total IRP Supplements paid thru the web

	Jan	Feb	Mar	Apr	May	Jun	Jul	Aug	Sep	Oct	Nov	Dec	Year End
2011	3.19%	2.20%	3.94%	3.11%	3.73%	4.34%	4.32%	5.04%	5.23%				3.90%
2010	0.56%	1.16%	0.85%	1.48%	2.23%	2.15%	2.50%	2.12%	2.28%	1.72%	1.19%	2.46%	1.73%
2019	0.23%	0.35%	0.35%	0.59%	0.48%	0.59%	0.86%	1.22%	0.89%	1.17%	0.86%	1.40%	0.75%

Percent of Total IRP Registrations billed thru the Web



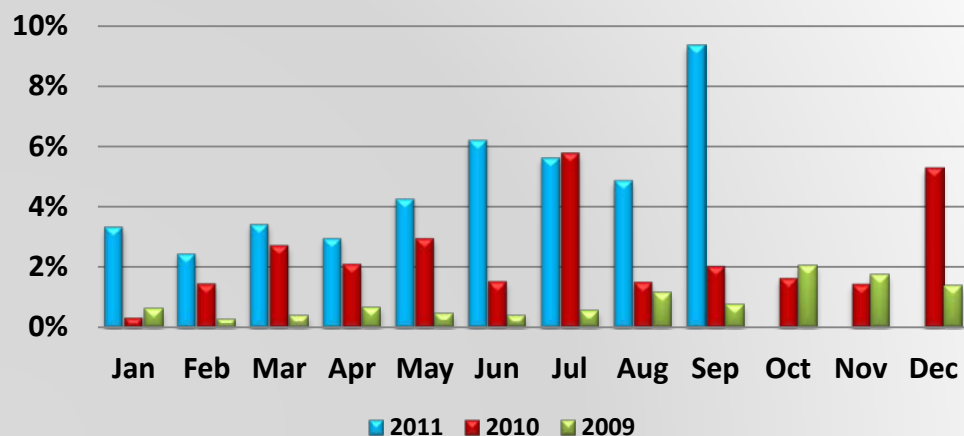
Description –

Percentage of the total vehicle registrations that had an online bill produced (by the IRP supplement transaction(s) being calculated/produced online).

Percent of Total IRP Registrations billed thru the web

	Jan	Feb	Mar	Apr	May	Jun	Jul	Aug	Sep	Oct	Nov	Dec	Year End
2011	8.85%	6.72%	7.23%	5.59%	9.56%	5.78%	7.59%	16.31%	11.30%				8.77%
2010	2.84%	7.71%	6.24%	7.69%	10.15%	7.53%	9.52%	18.08%	13.35%	9.40%	6.78%	12.28%	9.30%
2009	1.98%	3.47%	1.47%	3.20%	1.75%	2.06%	1.97%	12.29%	10.40%	3.38%	4.03%	2.83%	4.07%

Percent of Total IRP Registrations paid thru the web



Description –

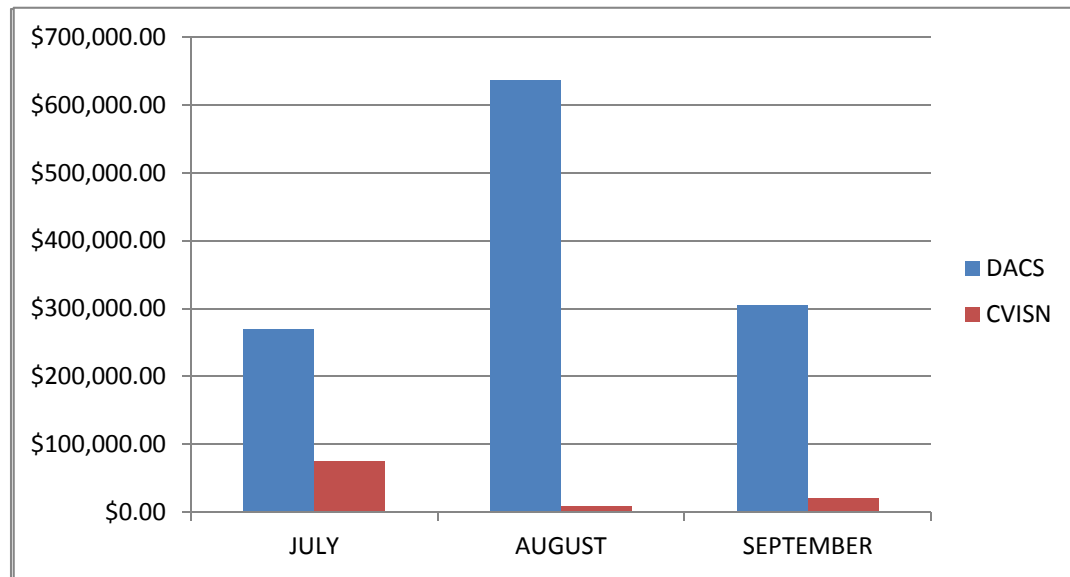
Percentage of total vehicle registrations that were paid for online (by IRP supplements being paid online).

Percent of Total IRP Registrations paid thru the web

	Jan	Feb	Mar	Apr	May	Jun	Jul	Aug	Sep	Oct	Nov	Dec	Year End
2011	3.34%	2.45%	3.43%	2.97%	4.27%	6.20%	5.61%	4.86%	9.34%				4.72%
2010	0.33%	1.46%	2.72%	2.10%	2.96%	1.52%	5.75%	1.50%	2.02%	1.64%	1.44%	5.27%	2.39%
2009	0.61%	0.27%	0.37%	0.66%	0.44%	0.38%	0.54%	1.16%	0.74%	2.05%	1.74%	1.37%	0.86%

	JULY	AUGUST	SEPTEMBER	TOTAL
DACS	\$268,772.71	\$637,134.98	\$304,718.53	\$1,210,626.22
CVISN	\$74,018.76	\$7,719.76	\$20,218.27	\$101,956.79
	\$342,791.47	\$644,854.74	\$324,936.80	\$1,312,583.01

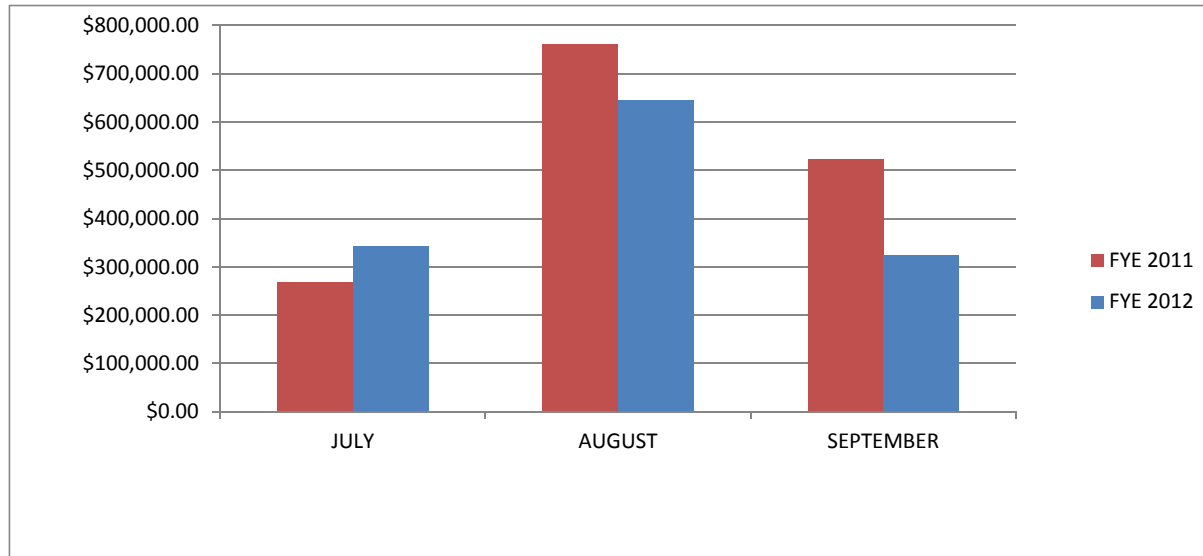
DACS/CVISN 2011-2012



	JULY	AUGUST	SEPTEMBER	TOTAL
FYE 2011	\$268,772.71	\$760,489.37	\$523,100.55	\$1,552,362.63
FYE 2012	\$342,791.47	\$644,854.74	\$324,936.80	\$1,312,583.01

TOTAL
\$3,104,725.26

COMPARISON of 2011-2012



Florida CVISN Team Meeting Florida Port of Entry Feasibility Study



October , 2011

1

Port of Entry Research



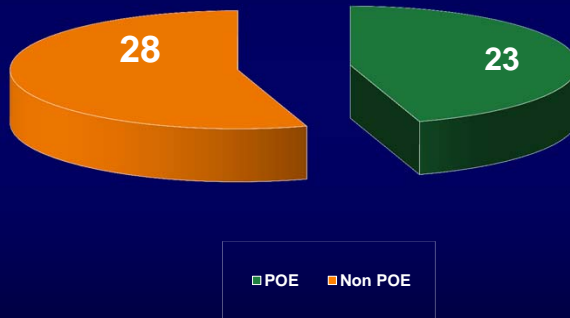
1. **Wanted to see what other states do**
2. **Questions we asked**
 - a. **Are permits/operating credentials issued at the POE stations?**
 - b. **If not issued @ weigh station, how to get permit?**
 - c. **Penalties/fines for not having permit/credentials**
3. **Results**

2

U.S. Port of Entry Distribution*



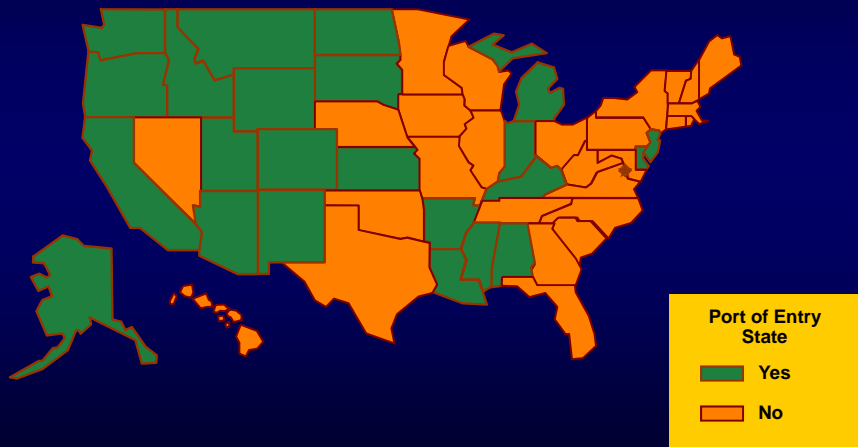
50 U.S. States & DC



*Rand McNally 2012 Truckers Atlas

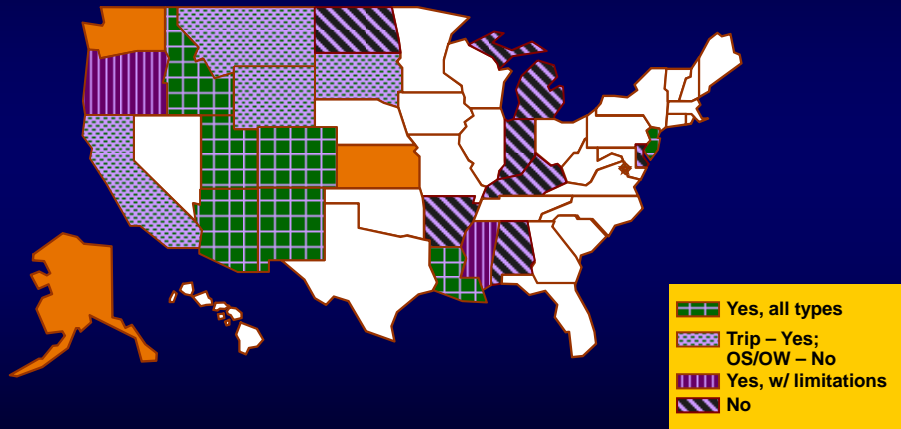
3

U.S. Ports of Entry Status by State



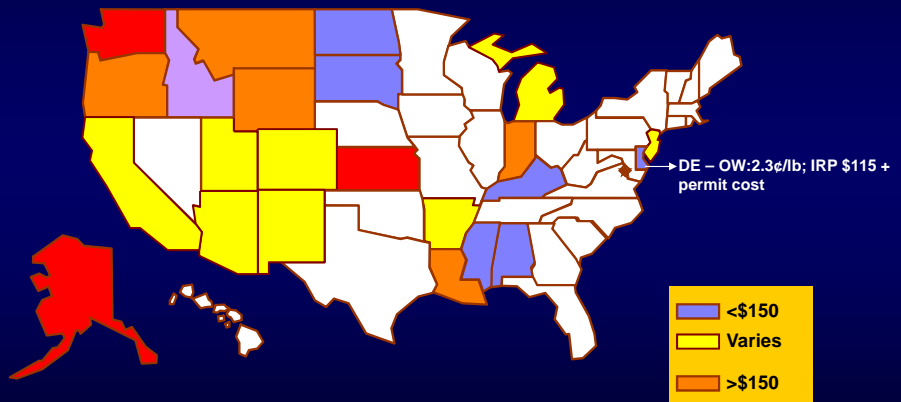
4

Permits issued at POE Weigh Stations



5

Fines



6

Report Outline

*7 Chapters in the report – holistic view
with long term impacts identified*

- 1) Port of Entry Project Introduction
 - 1) Genesis of this project and how it fits with objectives of the Florida CVISN Program
- 2) Florida POE History/Background
 - 1) How and when FL became a non-POE state and why

7

Report Outline

- 3) National Port of Entry Status
 - 1) The national picture of POE status - which (if any) states have changed their status and when, why and how
 - 2) Fees assessed by other states for violating POE requirements (in comparison to what Florida assesses)
- 4) Financial/Revenue Implications of Florida Non-Port of Entry Status
 - 1) What revenues are derived from Florida POE violation status and estimated impacts to revenue should this status change from non-POE to POE

8

Report Outline

- 5) Legislative Requirements to Change FL POE Status
 - 1) Legislative wording for non-POE status and what is required to change to POE status
- 6) Potential POE Strategies and Tools
 - 1) With POE change, the typical scenarios for obtaining the appropriate credentials for operating in Florida
 - 1) Identification of ITS tools and strategies for deployment and operations

9

Report Outline

- 7) Strategic Port of Entry Locations
 - 1) Which locations would be cost effective for managing POE requirements
- 8) Costs and timelines for POE Status Change
- 9) Florida POE status change recommendations
 - 1) Recommendations based on briefings and input from industry and affected agencies

10

**Florida CVISN Team Meeting
Florida Port of Entry Feasibility Study**



October , 2011