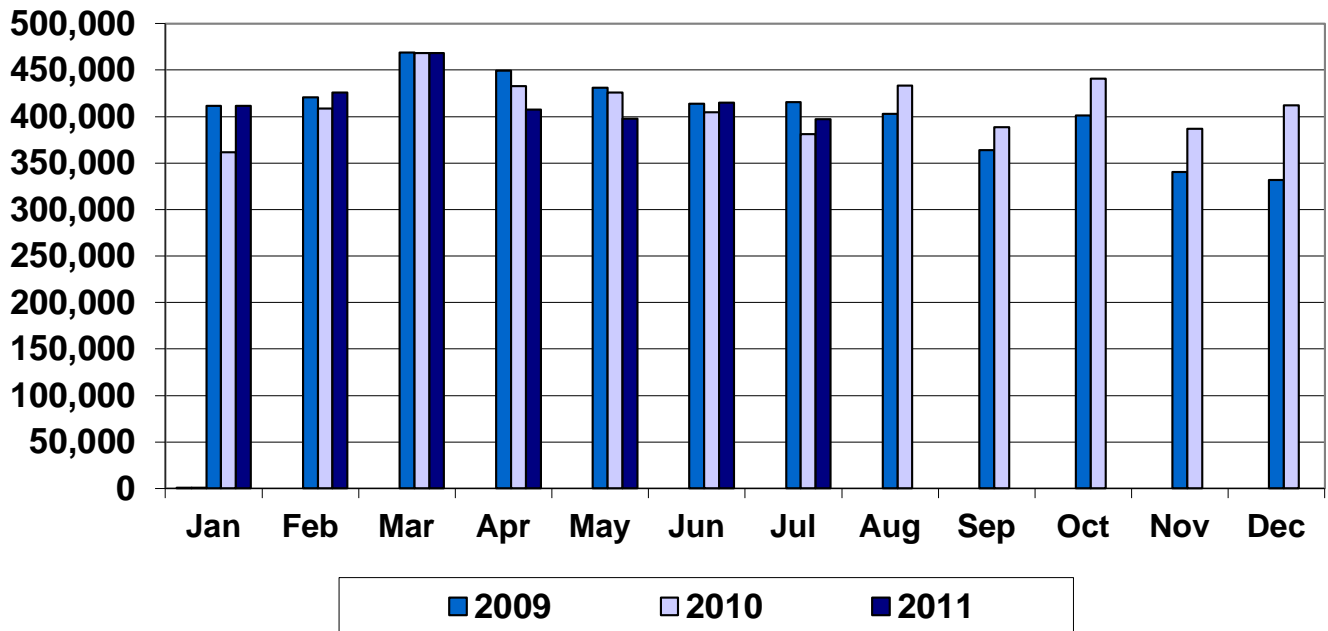
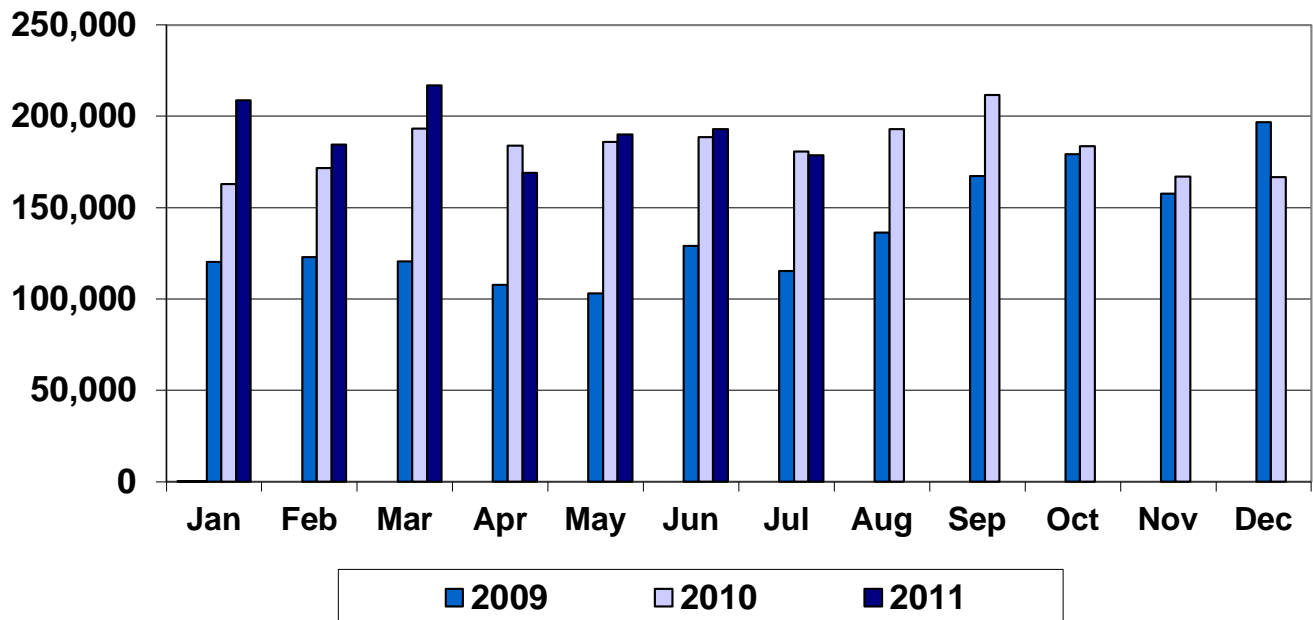


Appendices

OMCC PrePass Bypass Activity

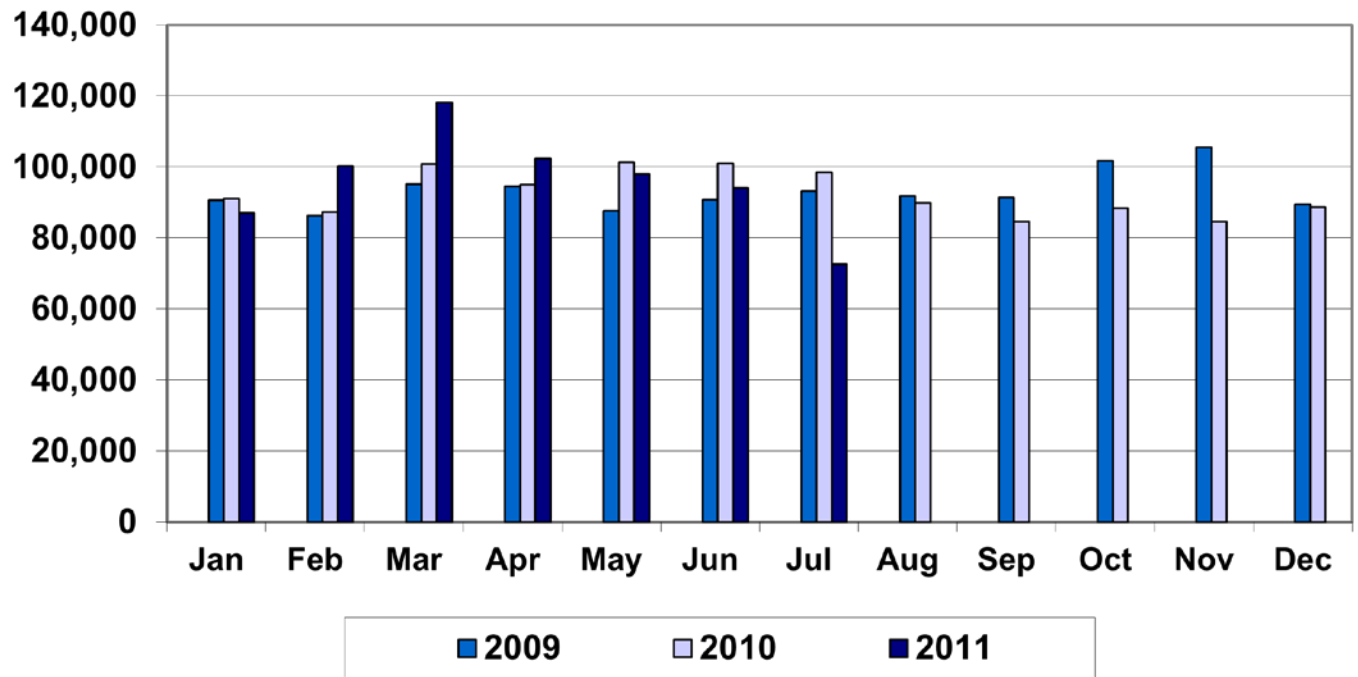


OMCC PrePass Pull-in Activity



OMCC YTD 2011
 Bypasses = 2,923,753
 Pull-ins = 1,341,127

Dept. of Agriculture Bypass Activity



DACS YTD 2011
Bypasses = 672,412

	Yearly Total Bypasses		
	2009	2010	YTD 2011
OMCC	4,851,658	4,945,087	2,923,753
Agriculture	1,118,141	1,111,240	672,412
TOTAL	5,969,799	6,056,327	3,596,165

Office of Motor Carrier Compliance (OMCC)

Time Period	Jan-11	Feb-11	Mar-11	Apr-11	May-11	Jun-11	Jul-11	Aug-11	Sep-11	Oct-11	Nov-11	Dec-11
# sites	19	19	19	18	19	19	19					
Bypasses	411,467	425,841	468,434	407,752	397,792	415,044	397,423					
Pullins	208,712	184,650	216,792	169,029	190,175	193,057	178,712					

Time Period	Jan-10	Feb-10	Mar-10	Apr-10	May-10	Jun-10	Jul-10	Aug-10	Sep-10	Oct-10	Nov-10	Dec-10
# sites	16	18	18	18	18	18	18	19	19	19	19	19
Bypasses	361,417	408,853	468,558	432,933	426,150	404,527	380,849	433,326	388,358	440,847	386,897	412,372
Pullins	163,055	171,638	193,256	183,865	186,093	188,705	180,795	192,924	211,640	183,764	166,996	166,597

Time Period	Jan-09	Feb-09	Mar-09	Apr-09	May-09	Jun-09	Jul-09	Aug-09	Sep-09	Oct-09	Nov-09	Dec-09
# sites	17	16	16	16	16	16	16	16	16	16	16	16
Bypasses	411,421	420,864	469,064	449,240	431,090	413,693	415,841	403,031	363,993	401,315	340,588	331,518
Pullins	120,236	122,907	120,595	107,865	103,045	129,064	115,358	136,281	167,170	179,350	157,545	196,850

OMCC Notes:

Plant City WB closed 7/2008 – 1/2010

Plant City EB closed 2/2009 – 12/2009

Punta Gorda NB closed 01/2010, 07/2010

Wildwood NB closed 4/2011

Department of Agriculture

Time Period	Jan-11	Feb-11	Mar-11	Apr-11	May-11	Jun-11	Jul-11	Aug-11	Sep-11	Oct-11	Nov-11	Dec-11
# sites	7	7	7	7	7	7	6					
Bypasses	87,027	100,254	118,092	102,374	97,939	94,157	72,569					

Time Period	Jan-10	Feb-10	Mar-10	Apr-10	May-10	Jun-10	Jul-10	Aug-10	Sep-10	Oct-10	Nov-10	Dec-10
# sites	6	6	6	6	7	7	7	7	6	6	6	6
Bypasses	91,125	87,391	100,842	94,969	101,303	100,963	98,428	89,895	84,624	88,385	84,581	88,734

Time Period	Jan-09	Feb-09	Mar-09	Apr-09	May-09	Jun-09	Jul-09	Aug-09	Sep-09	Oct-09	Nov-09	Dec-09
# sites	6	6	6	6	6	6	6	6	6	6	6	6
Bypasses	90,602	86,245	95,185	94,608	87,595	90,735	93,224	91,820	91,337	101,814	105,535	89,441

Dept of Agriculture Notes: *Ag White Spring 9B SB closed 7/2011*

Total Number of IFTA Decals from 01/01/2008 thru 7/31/2011													
	Jan	Feb	Mar	Apr	May	Jun	Jul	Aug	Sep	Oct	Nov	Dec	Year End
	2011	2011	2011	2011	2011	2011	2011	2011	2011	2011	2011	2011	2011
Legacy + CVISN	5,089	3,015	2,485	1,001	1,051	935	870						14,446
CVISN	856	434	178	142	114	62	28						1,814
CVISN %	16.821%	14.395%	7.163%	14.186%	10.847%	6.631%	3.218%						12.557%
	2010	2010	2010	2010	2010	2010	2010	2010	2010	2010	2010	2010	2010
Legacy + CVISN	5,541	3,151	2,059	1,662	1,184	1,006	1,600	976	4,602	11,195	9,648	9,122	51,746
CVISN	122	104	145	105	179	44	21	115	135	1,206	752	987	3,915
CVISN %	2.202%	3.301%	7.042%	6.318%	15.118%	4.374%	1.313%	11.783%	2.934%	10.773%	7.794%	10.820%	7.566%
	2009	2009	2009	2009	2009	2009	2009	2009	2009	2009	2009	2009	2009
Legacy + CVISN	4,875	2,512	3,189	1,032	827	868	1,100	782	4,107	12,402	8,872	7,680	48,246
CVISN	63	44	31	27	83	23	77	16	320	336	476	207	1,703
CVISN %	1.292%	1.752%	0.972%	2.616%	10.036%	2.650%	7.000%	2.046%	7.792%	2.709%	5.365%	5.365%	3.530%
	2008	2008	2008	2008	2008	2008	2008	2008	2008	2008	2008	2008	2008
Legacy + CVISN	5,701	3,752	2,470	1,279	1,184	1,014	1,095	3,730	1,2034	7,549	6,470	8,710	54,988
CVISN	49	16	29	22	2	19	4	39	99	79	84	145	588
CVISN%	0.859%	0.426%	1.174%	1.720%	0.253%	1.874%	0.365%	1.046%	0.823%	1.046%	1.298%	1.665%	1.069%

From 2008 – Present: Legacy + CVISN = 169,426; CVISN = 8,020; CVISN Percentage = 4.734%

Total Number of IFTA Tax Returns from 01/01/2008 thru 7/31/2011													
	Jan	Feb	Mar	Apr	May	Jun	Jul	Aug	Sep	Oct	Nov	Dec	Year End
	2011	2011	2011	2011	2011	2011	2011	2011	2011	2011	2011	2011	2011
Legacy + CVISN	2,604	7,305	2,497	3,691	6,161	1,553	3,905						27,716
CVISN	624	166	158	532	192	95	552						2,319
CVISN %	23.963%	2.272%	6.328%	14.413%	3.116%	6.117%	14.136%						8.367%
	2010	2010	2010	2010	2010	2010	2010	2010	2010	2010	2010	2010	2010
Legacy + CVISN	3,021	6,501	2,461	4,091	5,966	1,640	3,472	5,739	1,440	3,798	5,607	1,481	45,217
CVISN	336	69	80	428	47	84	367	126	90	443	125	117	2,312
CVISN %	11.122%	1.061%	3.251%	10.462%	0.788%	5.122%	10.570%	2.196%	6.250%	11.664%	2.229%	7.900%	5.113%
	2009	2009	2009	2009	2009	2009	2009	2009	2009	2009	2009	2009	2009
Legacy + CVISN	3,271	6,271	1,868	3,468	5,565	1,572	4,145	4,834	1,260	3,715	5,244	1,655	42,868
CVISN	177	29	27	218	28	26	240	18	41	292	76	47	1,219
CVISN %	5.411%	0.462%	1.445%	6.286%	0.503%	1.654%	5.790%	0.372%	3.254%	7.860%	1.449%	2.840%	2.844%
	2008	2008	2008	2008	2008	2008	2008	2008	2008	2008	2008	2008	2008
Legacy + CVISN	3,154	6,614	2,013	3,901	5,398	1,704	3,729	4,907	1,539	4,322	5,204	1,975	44,460
CVISN	139	17	24	157	15	23	157	18	16	173	10	26	774
CVISN%	4.375%	0.257%	1.192%	4.025%	0.278%	1.350%	4.210%	0.367%	1.040%	4.003%	0.192%	1.316%	1.741%

From 2008 – Present: Legacy + CVISN = 160,261; CVISN = 6,624; CVISN Percentage = 4.133%

Total Number of IFTA Tax Returns Refund from 01/01/2008 thru 7/31/2011													
	Jan	Feb	Mar	Apr	May	Jun	Jul	Aug	Sep	Oct	Nov	Dec	Year End
	2011	2011	2011	2011	2011	2011	2011	2011	2011	2011	2011	2011	2011
Legacy + CVISN	37	1	2	26	7	4	18						95
CVISN	37	1	2	26	7	1	17						91
CVISN %	100%	100%	100%	100%	100%	25%	94.444%						95.789%
	2010	2010	2010	2010	2010	2010	2010	2010	2010	2010	2010	2010	2010
Legacy + CVISN	24	1	3	27	2	3	30	2	1	34	1	5	133
CVISN	23	1	2	23	0	3	30	2	1	34	1	3	121
CVISN %	95.833%	100%	66.667%	77.778%	0%	100%	100%	100%	100%	100%	100%	60.000%	90.977%
	2009	2009	2009	2009	2009	2009	2009	2009	2009	2009	2009	2009	2009
Legacy + CVISN	23	1	3	18	0	1	15	1	3	18	5	1	89
CVISN	23	1	3	18	0	1	15	1	2	18	2	1	85
CVISN %	100%	100%	100%	100%	0.000%	100%	100%	100%	66.667%	100%	40.000%	100%	95.506%
	2008	2008	2008	2008	2008	2008	2008	2008	2008	2008	2008	2008	2008
Legacy + CVISN	19	1	1	22	1	4	20	0	3	20	2	0	93
CVISN	17	0	1	21	1	4	20	0	3	19	1	0	87
CVISN%	89.474%	0.000%	100%	95.455%	100%	100%	100%	0.000%	100%	95.000%	50.000%	0.000%	93.548%

From 2008 – Present: Legacy + CVISN = 410; CVISN = 384; CVISN Percentage = 93.659%

Total Number of IRP Supplements paid thru the web from 01/01/2008 thru 7/31/2011													
	Jan	Feb	Mar	Apr	May	Jun	Jul	Aug	Sep	Oct	Nov	Dec	Year End
	2011	2011	2011	2011	2011	2011	2011	2011	2011	2011	2011	2011	2011
Legacy + CVISN	1,535	2,001	2,108	1,960	2010	2,141	1,827						13,582
CVISN	49	44	83	61	75	93	79						484
CVISN %	3.192%	2.199%	3.937%	3.112%	3.731%	4.344%	4.324%						3.564%
	2010	2010	2010	2010	2010	2010	2010	2010	2010	2010	2010	2010	2010
Legacy + CVISN	1,419	1,640	1,993	1,964	1,880	2,094	1,921	1,838	1,885	2,091	1,348	894	20,967
CVISN	8	19	17	29	42	45	48	39	43	36	16	22	364
CVISN %	0.564%	1.159%	0.853%	1.477%	2.234%	2.149%	2.499%	2.122%	2.281%	1.722%	1.187%	2.461%	1.736%
	2009	2009	2009	2009	2009	2009	2009	2009	2009	2009	2009	2009	2009
Legacy + CVISN	1,734	1,741	1,996	1,869	1,679	2,029	1,739	1,723	1,683	1,874	1,165	929	20,161
CVISN	4	6	7	11	8	12	15	21	15	22	10	13	144
CVISN %	0.231%	0.345%	0.351%	0.589%	0.476%	0.591%	0.863%	1.219%	0.891%	1.174%	0.858%	1.399%	0.714%
	2008	2008	2008	2008	2008	2008	2008	2008	2008	2008	2008	2008	2008
Legacy + CVISN	1,857	1,893	1,810	1,971	1,855	1,887	1,991	1,789	1,921	2,283	1,071	1,058	21,386
CVISN	0	0	2	1	1	2	2	2	4	3	2	3	22
CVISN%	0.000%	0.000%	0.110%	0.051%	0.054%	0.106%	0.100%	0.112%	0.208%	0.131%	0.187%	0.284%	0.103%

From 2008 – Present: Legacy + CVISN = 76,096; CVISN = 1,014; CVISN Percentage = 1.333%

Total Number of IRP Registrations paid thru the web from 01/01/2008 thru 7/31/2011													
	Jan	Feb	Mar	Apr	May	Jun	Jul	Aug	Sep	Oct	Nov	Dec	Year End
	2011	2011	2011	2011	2011	2011	2011	2011	2011	2011	2011	2011	2011
Legacy + CVISN	4,609	3,023	3,934	3,742	4,217	6,247	3,244						29,016
CVISN	154	74	135	111	180	387	182						1,223
CVISN %	3.341%	2.448%	3.432%	2.966%	4.268%	6.195%	5.610%						4.215%
	2010	2010	2010	2010	2010	2010	2010	2010	2010	2010	2010	2010	2010
Legacy + CVISN	4,206	2,885	3,347	3,997	3,518	5,915	3,389	4,921	4,058	4,091	1,664	1,253	43,244
CVISN	14	42	91	84	104	90	195	74	82	67	24	66	933
CVISN %	0.333%	1.456%	2.719%	2.102%	2.956%	1.522%	5.754%	1.504%	2.021%	1.638%	1.442%	5.267%	2.158%
	2009	2009	2009	2009	2009	2009	2009	2009	2009	2009	2009	2009	2009
Legacy + CVISN	3,793	2,976	4,593	3,966	2,701	4,942	5,029	4,501	4,201	3,410	1,550	1,612	43,274
CVISN	23	8	17	26	12	19	27	52	31	70	27	22	334
CVISN %	0.606%	0.269%	0.370%	0.656%	0.444%	0.384%	0.537%	1.155%	0.738%	2.053%	1.742%	1.365%	0.772%
	2008	2008	2008	2008	2008	2008	2008	2008	2008	2008	2008	2008	2008
Legacy + CVISN	4,196	3,479	3,692	4,608	3,637	6,313	3,981	4,724	5,153	6,369	1,750	2,501	50,403
CVISN	0	0	3	1	1	2	2	2	4	13	2	7	37
CVISN%	0.000%	0.000%	0.081%	0.022%	0.027%	0.032%	0.050%	0.042%	0.078%	0.204%	0.114%	0.280%	0.073%

From 2008 – Present: Legacy + CVISN = 165,937; CVISN = 2,527; CVISN Percentage = 1.523%

Total Number of IRP Supplements Billed thru the web from 01/01/2008 thru 7/31/2011													
	Jan	Feb	Mar	Apr	May	Jun	Jul	Aug	Sep	Oct	Nov	Dec	Year End
	2011	2011	2011	2011	2011	2011	2011	2011	2011	2011	2011	2011	2011
Legacy + CVISN	2,003	2,239	2,364	2,247	2,202	2,455	2,057						15,567
CVISN	117	138	160	151	142	134	175						1,016
CVISN %	5.791%	6.163%	6.768%	6.720%	6.449%	5.458%	8.508%						6.527%
	2010	2010	2010	2010	2010	2010	2010	2010	2010	2010	2010	2010	2010
Legacy + CVISN	1,810	1,808	2,351	2,283	2,090	2,414	2,205	2,180	2,092	2,117	1,343	1,076	23,769
CVISN	59	80	116	199	170	163	163	192	222	206	93	67	1,730
CVISN %	3.260%	4.425%	4.934%	8.717%	8.134%	6.752%	7.392%	8.807%	10.612%	9.731%	6.925%	6.227%	7.278%
	2009	2009	2009	2009	2009	2009	2009	2009	2009	2009	2009	2009	2009
Legacy + CVISN	2,011	1,943	2,278	2,018	2,009	2,345	1,900	2,031	1,763	1,894	1,394	1,164	22,750
CVISN	29	37	44	36	39	59	41	84	56	52	32	38	547
CVISN %	1.442%	1.904%	1.932%	1.784%	1.941%	2.516%	2.158%	4.136%	3.176%	2.746%	2.296%	3.265%	2.404%
	2008	2008	2008	2008	2008	2008	2008	2008	2008	2008	2008	2008	2008
Legacy + CVISN	2,108	1,993	2,051	2,021	2,025	2,128	2,284	2,099	2,116	2,183	1,291	1,331	23,630
CVISN	3	7	24	15	20	24	19	36	29	13	17	31	238
CVISN%	0.142%	0.351%	1.170%	0.742%	0.988%	1.128%	0.832%	1.715%	1.371%	0.596%	1.317%	2.329%	1.007%

From 2008 – Present: Legacy + CVISN = 85,716; CVISN = 3,531; CVISN Percentage = 4.119%

Total Number of IRP Registrations billed thru the web from 01/01/2008 thru 7/31/2011													
	Jan	Feb	Mar	Apr	May	Jun	Jul	Aug	Sep	Oct	Nov	Dec	Year End
	2011	2011	2011	2011	2011	2011	2011	2011	2011	2011	2011	2011	2011
Legacy + CVISN	4,214	3,378	5,129	4,347	3,798	6,058	4,891						31,815
CVISN	373	227	371	243	363	350	371						2,298
CVISN %	8.851%	6.720%	7.233%	5.590%	9.558%	5.777%	7.585%						7.223%
	2010	2010	2010	2010	2010	2010	2010	2010	2010	2010	2010	2010	2010
Legacy + CVISN	3,978	3,060	4,838	4,231	3,891	5,618	4,956	4,254	4,325	3,488	1,914	2,588	47,141
CVISN	113	236	302	325	397	421	474	768	553	327	130	318	4,364
CVISN %	2.841%	7.712%	6.242%	7.681%	10.203%	7.494%	9.564%	18.054%	12.786%	9.375%	6.792%	12.287%	9.257%
	2009	2009	2009	2009	2009	2009	2009	2009	2009	2009	2009	2009	2009
Legacy + CVISN	3,644	4,036	4,498	4,058	4,174	6,115	4,581	4,118	3,636	3,049	2,283	2,655	46,847
CVISN	72	140	66	130	73	125	90	506	378	103	92	75	1,850
CVISN %	1.976%	3.469%	1.467%	3.204%	1.749%	2.044%	1.965%	12.288%	10.396%	3.378%	4.030%	2.825%	3.949%
	2008	2008	2008	2008	2008	2008	2008	2008	2008	2008	2008	2008	2008
Legacy + CVISN	4,241	3,874	4,134	4,578	3,819	6,359	5,323	4,715	6,527	4,141	2,457	3,077	53,245
CVISN	5	7	28	38	40	52	29	106	65	44	27	98	539
CVISN%	0.118%	0.181%	0.677%	0.830%	1.047%	0.818%	0.545%	2.248%	0.996%	1.063%	1.099%	3.185%	1.012%

From 2008 – Present: Legacy + CVISN = 179,048; CVISN = 9,051; CVISN Percentage = 5.055%

Total Number of IRP Registrations per month per supplement type entered thru the web from 01/01/2008 thru 7/31/2011													
	Jan	Feb	Mar	Apr	May	Jun	Jul	Aug	Sep	Oct	Nov	Dec	Year End
	2011	2011	2011	2011	2011	2011	2011	2011	2011	2011	2011	2011	2011
Add Juris	20	16	9	34	14	15	33						141
Add Veh	19	19	37	31	24	63	42						235
Dup C. C.	0	2	2	1	4	0							9
Renewal	333	185	319	169	311	257	285						1,859
Transfer	1	5	4	8	10	15	11						54
	2010	2010	2010	2010	2010	2010	2010	2010	2010	2010	2010	2010	2010
Add Juris	2	18	9	32	50	28	57	29	23	20	15	31	314
Add Veh	15	14	53	58	48	32	92	50	45	18	50	20	495
Dup C. C.	1	0	0	2	4	2	1	3	2	4	6	2	27
Renewal	90	201	233	170	256	349	287	678	475	274	45	256	3,314
Transfer	5	3	7	63	39	10	37	8	8	11	14	9	214
	2009	2009	2009	2009	2009	2009	2009	2009	2009	2009	2009	2009	2009
Add Juris	8	4	8	6	7	17	3	32	59	42	14	12	212
Add Veh	4	0	13	2	11	5	5	14	10	12	4	9	89
Dup C. C.	0	2	3	2	2	1	1	1	2	1	11	3	29
Renewal	58	132	39	119	50	100	80	458	304	41	59	47	1,487
Transfer	2	2	3	1	3	2	1	1	3	7	4	4	33
	2008	2008	2008	2008	2008	2008	2008	2008	2008	2008	2008	2008	2008
Add Juris	0	0	0	0	0	0	0	0	0	0	1	2	3
Add Veh	0	1	1	2	3	4	4	8	2	6	0	7	38
Dup C. C.	1	0	0	0	1	0	0	0	0	0	0	0	2
Renewal	4	6	27	36	36	48	25	98	63	35	25	89	492
Transfer	0	0	0	0	0	0	0	0	0	3	1	0	4

IRP: Original and Renewal Transactions												
Reg Yr	2009			2010			2011			2012		
	Legacy & CVISN	CVISN	CVISN %	Legacy & CVISN	CVISN	CVISN %	Legacy & CVISN	CVISN	CVISN %	Legacy & CVISN	CVISN	CVISN %
	14,697	145	0.987%	14,368	345	2.401%	14,713	1,125	7.646%	8,734	685	7.843%
IRP: Total Transactions												
Reg Yr	2009			2010			2011			2012		
	Legacy & CVISN	CVISN	CVISN %	Legacy & CVISN	CVISN	CVISN %	Legacy & CVISN	CVISN	CVISN %	Legacy & CVISN	CVISN	CVISN %
	20,735	229	1.104%	20,272	615	3.034%	21,165	1,653	7.813%	10,479	831	7.930%
IFTA Transactions												
Tax Returns				Decals Ordered								
	Legacy & CVISN	CVISN	CVISN %	Legacy & CVISN	CVISN	CVISN %						
	160,261	6,624	4.133%	169,426	8,020	4.734%						

Total Number of CVISN Accounts													
	Jan	Feb	Mar	Apr	May	Jun	Jul	Aug	Sep	Oct	Nov	Dec	Created in Year
	2011	2011	2011	2011	2011	2011	2011	2011	2011	2011	2011	2011	2011
New per Month	295	278	388	177	114	170	194						1,616
Running total	6,877	7,155	7,543	7,720	7,834	8,004	8,198						
	2010	2010	2010	2010	2010	2010	2010	2010	2010	2010	2010	2010	2010
New per Month	77	153	273	382	202	205	234	256	304	347	346	364	3,143
Running total	3,516	3,669	3,942	4,324	4,526	4,731	4,965	5,221	5,525	5,872	6,218	6,582	
	2009	2009	2009	2009	2009	2009	2009	2009	2009	2009	2009	2009	2009
New per Month	69	75	65	88	81	426	149	119	129	125	95	169	1,590
Running total	1,918	1,993	2,058	2,146	2,227	2,653	2,802	2,921	3,050	3,175	3,270	3,439	
	2008	2008	2008	2008	2008	2008	2008	2008	2008	2008	2008	2008	2008
New per Month	39	266	30	37	25	35	35	52	112	165	72	64	932
Running total	956	1,222	1,252	1,289	1,314	1,349	1,384	1,436	1,548	1,713	1,785	1,849	
	2007	2007	2007	2007	2007	2007	2007	2007	2007	2007	2007	2007	2007
New per Month	12	10	11	251	224	26	34	30	63	45	56	87	849
Running total	80	90	101	352	576	602	636	666	729	774	830	917	
	2006	2006	2006	2006	2006	2006	2006	2006	2006	2006	2006	2006	2006
New per Month	0	0	0	0	0	0	0	0	17	35	11	5	68
Running total	0	0	0	0	0	0	0	0	17	52	63	68	

