

Date: _____

Inspector: _____

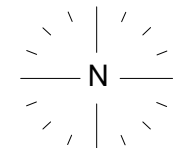
Financial Project ID: _____

As-Built Drawing No: _____

District: _____ County: _____

Site Identification Name: _____

PULLBOX ATTRIBUTES



ACCESS POINT DIMENSIONS: _____ (L) X _____ (W) X _____ (H)

STATE PLANE COORDINATE: N = _____

E = _____

LATITUDE/LONGITUDE: N = _____

W = _____

YEAR OF INSTALLATION: _____

DISTANCE TO TRAVEL LANE: _____

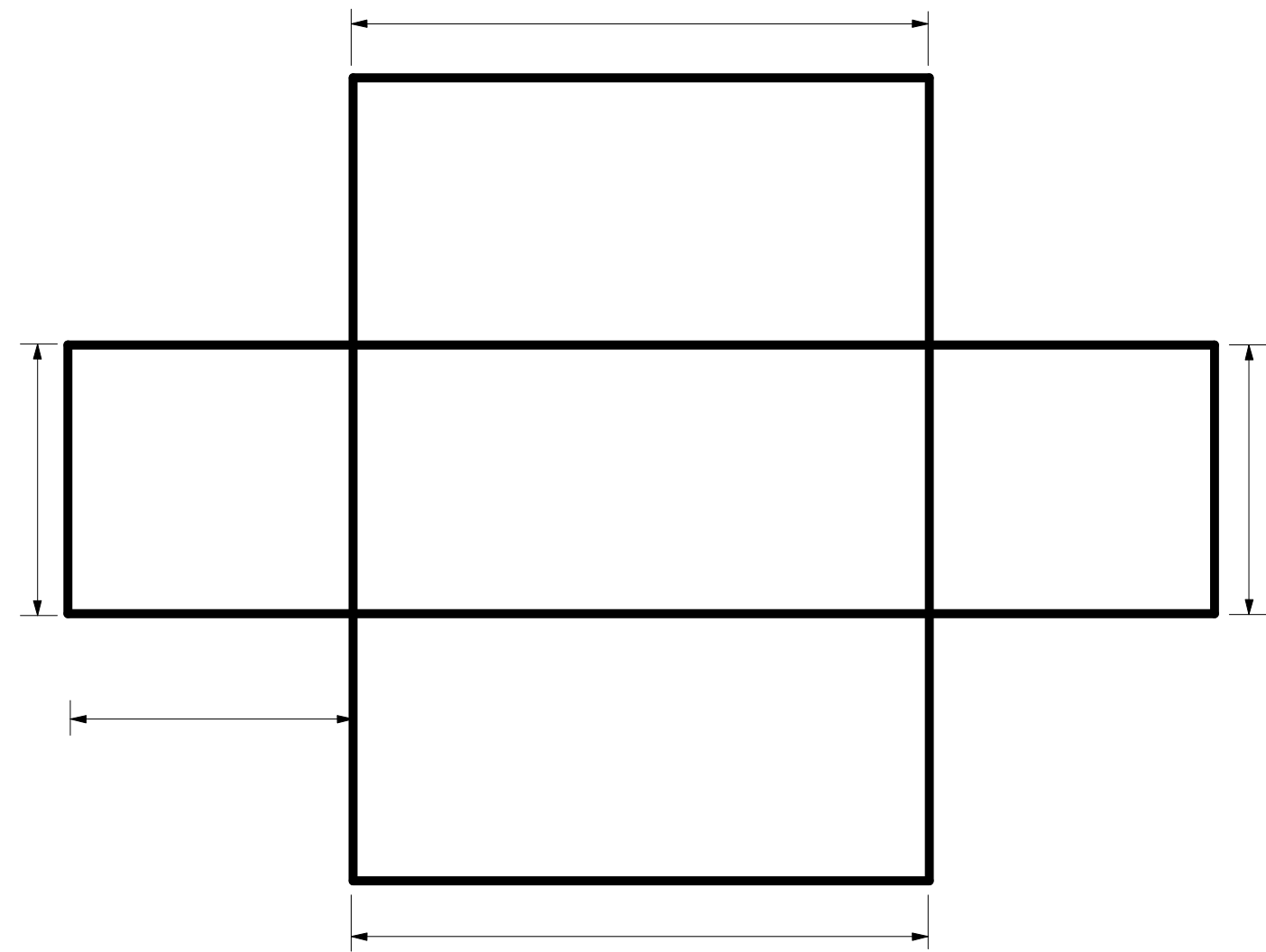
LOCATED IN CLEAR ZONE: YES NO

LANE CLOSURE REQUIRED: YES NO

GROUND ROD INSTALLED: YES NO

LOCK INDICATOR: YES NO

BOLT SIZE: _____



LEGEND

- FIBER OPTIC CABLE
- - - - - TONE WIRE
- SPLICE FIBER OPTIC SPLICE CLOSURE
- V CABLE PULLING EYE
- CONDUIT ENTRANCE
- (P) CONDUIT EQUIPPED WITH DUCT PLUG
- ===== WALL MOUNT CABLE RACK
- SUMP SUMP HOLE

NOTES

1. THE INSPECTOR SHALL INDICATE THE LOCATION OF CONDUIT(S) PENETRATION, CONDUIT PLUGS, CABLE RACKS, PULL -EYES AND CABLE ROUTING WITHIN THE ACCESS POINT ON THIS DRAWING.
2. ALL ACCESS POINT MEASUREMENTS ARE INSIDE DIMENSIONS.
3. ALL CABLES SHALL BE ANNOTATED TO SHOW THE CABLE TYPE, THE NUMBER OF STRANDS AND CABLE SEQUENTIAL MEASUREMENTS AT THE ACCESS POINT WALLS AND EACH SIDE OF A SPLICE.
4. THE TONE WIRE ROUTINGS AND TERMINATIONS SHALL BE SHOWN ON THIS DRAWING.
5. ALL COORDINATES SHALL BE SUBMETER ACCURATE.

Box Material: _____

Lid Type (one piece, round, two piece) _____

Lid Material: _____

Lock Indicator: Yes _____ No _____

Lock Type (9/16", 3/4 "Penta bolt): _____