



Events Using Polylines

Tucker Brown

- Current Events using a single point for the events location
 - Can enter a head and tail but are reported separately
- This enhancement would allow users to specify a polyline as the location of event
 - Mostly used for road closures such as flooding or constructions



- How should this be implemented?
 - What points of the polyline, should be EM Locations?
 - Start Point?
 - Start Point and End Point?
 - All Points (including midpoints)?
 - How should the user select Midpoints?
 - Manually
 - Possible integration with GIS to try to follow the roadway closely?
 - Should Lane blockage be allowed?
 - Or only Closures?
 - What should the description of this say?
 - X Lanes Blocked (or Closed) from A to B
- Other Ideas? Other areas you might like to discuss this changing?



QUESTIONS?



Bridge Preemption

Mark Laird

Bridge Preemption

- Purpose
 - Provide FL-ATIS notifications when drawbridges open and close
 - Log events in SunGuide for tracking
 - Minimize operator involvement
- Overview
 - Data from traffic controller is published via a web service by the managing agency
 - EM consumes data, creates event, publishes and closes event without operator involvement

Data Source

- Miami-Dade County Web Service

- <IntersectionStatusList>

- <IntersectionStatus>

```
<assetnumber>3421</assetnumber>  
<end_date_time>2018-03-07T09:14:08</end_date_time>  
<id>TS342120180307090408</id>  
<intersection_name>SE 2 Av&SE 3 St</intersection_name>  
<latitude>25.7717045447</latitude>  
<longitude>-80.1901146177</longitude>  
<start_date_time>2018-03-07T09:04:08</start_date_time>  
<status_name>BRIDGE PREEMPTION</status_name>
```

</IntersectionStatus>

- </IntersectionStatusList>

ID contains intersection ID and timestamp. SG stores in Waze ID field.

Longitude and Latitude must match an EM Location

Only elements with <status_name> set to BRIDGE PREEMPTION are processed by SG.



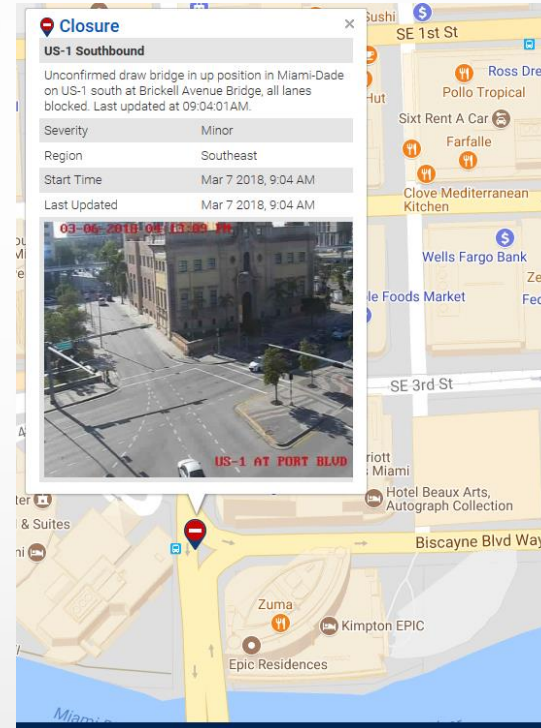
SunGuide



- EM polls a RESTful web service at configurable interval (https)
- When a BRIDGE PREEMPTION record is found, searches for EM location with matching long/lat.
- If location found, checks for existing event.
 - If found, updates the ending date/time. (not yet implemented?)
 - If not found:
 - Creates new unconfirmed event of type Bridge Up with all lanes blocked
 - Creates and activates response plan with FL-ATIS Publish item
- Checks active Bridge Up events.
 - If associated ID is no longer in feed, terminates response plan and closes the event
 - Will not create a duplicate event (with same Intersection Status ID)
- SG closes events automatically at the specified ending time if the data feed is unavailable
- Operators can close events

FL-ATIS

- Must create two EM locations to cover both directions of travel
- May associate with one intersection or may choose upstream intersection in each direction
- Appear on maps at intersection





FL-ATIS – New Event Alert

Closure - New

US-1 Southbound

Unconfirmed draw bridge in up position in Miami-Dade on US-1 south at Brickell Avenue Bridge, all lanes blocked. Last updated at 09:04:01AM.

Start Time Mar 7 2018, 9:04 AM

<http://fl511.com/EventDetails/District%206/674501>



Route Brickell Avenue Bridge SB

Current Travel Time 2 min

Normal Travel Time 1 min

Distance 0.4 miles



FL-ATIS – Cleared Event Alert

Closure - Cleared

US-1 Northbound

Unconfirmed draw bridge in up position in Miami-Dade on US-1 north at Brickell Avenue Bridge, all lanes blocked. Last updated at 09:04:01AM.

Start Time Mar 7 2018, 9:04 AM

<http://fl511.com/EventDetails/District%206/674500>



Route **Brickell Ave Br NB**

Current Travel Time **2 min**

Normal Travel Time **1 min**

Distance **0.5 miles**



Configuration

- List of sources
- Source
 - URL of web service
 - Description, e.g. Miami Dade County
 - Polling interval (secs)
 - Retry limit
 - SunGuide Agency, e.g. MDC
 - SunGuide Contact, e.g. MDC Website
 - SunGuide mailing list



Web.Config

```
<em  
  <bridgePreemption>  
  <webServices>  
    <webService>  
      <url>https://mdcware.miamidade.gov/api/IntersectionStatus?type=xml</url>  
      <sourceDescription>Miami-Dade County</sourceDescription>  
      <pollInterval>30</pollInterval>  
      <retryLimit>2</retryLimit>  
      <notifyingAgencyShortName>MDC</notifyingAgencyShortName>  
      <notifyingContactShortName>MDC Website</notifyingContactShortName>  
      <mailingListShortName>Bridge Events</mailingListShortName>  
    </webService>  
  </webServices>  
</bridgePreemption>  
</em>
```

Issues

- Data issues in web service data
 - Bouncing
 - Duplication
 - Delays
- Issue with unpublishing from FL-ATIS
 - Blockage is not updated before closing event
 - “Clearance” message says all lanes blocked
- Issue with event type
 - Clearance message says “... draw bridge in up position...”