



# Change Management Board

July 20, 2021



# New CMB Chairman

Amy DiRusso, P.E., FDOT D3



# Welcome and Call for Quorum

Amy DiRusso, P.E., FDOT D3  
CMB Chairman



# Agenda



Time	Item	Lead
1:00 – 1:05	Welcome and Call for Quorum	Amy DiRusso
1:05 – 1:15	Voting Membership	Amy DiRusso
1:15 – 1:20	Previous Meeting Action Items	Amy DiRusso
1:20 – 1:30	SunGuide Software Update	Christine Shafik
1:30 – 1:40	SG-5300 - Access to district SunGuide data from the Central Office	Mark Dunthorn
1:40 – 1:50	Supported Microsoft Products	Mark Dunthorn
1:50 – 2:00	SG-5585 - CV Connected Vehicle App SunGuide Support Request (I-4 Frame)	Mark Dunthorn



# Agenda



Time	Item	Lead
2:00 – 2:10	<u><a href="#">Enhancement #1</a></u> SG-5782/5660 - RISC Module Enhancements ( <b>VOTE</b> )	Tucker Brown
2:10 – 2:20	<u><a href="#">Enhancement #2</a></u> SG-4968 - Wrong Way Detection Pop-Up Alerts ( <b>VOTE</b> )	Tucker Brown
2:20 – 2:30	<u><a href="#">Enhancement #3</a></u> SG-5865 - Improve EM DMS suggestions if message does not fit ( <b>VOTE</b> )	Tucker Brown
2:30 – 2:40	<u><a href="#">Enhancement #4</a></u> SG-5282 - Change "Terminate Schedule" in SAS to also remove DMS from device queue ( <b>VOTE</b> )	Tucker Brown
2:40 – 2:50	<u><a href="#">Enhancement #5</a></u> SG-5706 - Add timestamp in SunGuide incident when Executive Notification Emails are sent ( <b>VOTE</b> )	Tucker Brown
2:50 – 3:00	<u><a href="#">Enhancement #6</a></u> SG-5668 - WWD Detection on Mainlines using MVDS ( <b>VOTE</b> )	Tucker Brown



# Agenda



Time	Item	Lead
3:00 – 3:10	<b><u>Enhancement #7</u></b> SG-4806 - Response Plan "511 ATIS" preview section does not match what is posted to FLATIS ( <b>VOTE</b> )	Tucker Brown
3:10 – 3:20	<b><u>Enhancement #8</u></b> SG-5533 - Operator Map OneClick Installation Security Issue ( <b>VOTE</b> )	Tucker Brown
3:20 – 3:30	<b><u>Enhancement #9</u></b> SG-5372 - Email Template Enhancement Request ( <b>VOTE</b> )	Tucker Brown
3:30 – 3:40	<b><u>Enhancement #10</u></b> SG-5396 - Associate Event with Managed Lanes Action List Execution ( <b>VOTE</b> )	Tucker Brown
3:40 – 3:55	Open Discussion	Amy DiRusso
3:55 – 4:00	Review Action Items	Amy DiRusso



# Voting Membership

Amy DiRusso, P.E., FDOT D3



# Voting Membership

Agency	Primary Voting Member	Secondary Voting Member
FDOT CO	Christine Shafik	Carla Holmes
FDOT D1	Mark Mathes	Robbie Brown
FDOT D2	Alex Varela	Dee Dee Johnson
FDOT D3	Greg Reynolds	Mark Nallick
FDOT D4	Hossam AbdelAll	Alexandra Lopez
FDOT D5	Jeremy Dilmore	Jay Williams
FDOT D6	Javier Rodriguez	Alejandro Motta
FDOT D7	Romona Burke	Daniel Buidens
FTE	Eric Gordin	John Easterling
CFX	Bryan Homayouni	Brent Poole
MDX	Wang Lee	Gary Lau





# Previous Meeting Action Items

Amy DiRusso, P.E., FDOT D3



# Previous Meeting Action Items

Owner	Action Item
FDOT CO / D2	Add Camera Control Status to Allow Filtering of Static Cameras
FDOT CO / D7	Discuss Blocking Cameras from View in DIVAS with ITS Working Group



# SunGuide Software Update

Christine Shafik, P.E., FDOT

## Release 8.0

- Released to districts - 12/17/2020
- All districts have deployed, or are scheduled to deploy, by the end of August!



Time to Celebrate



# Release 8.0 Hotfixes

- Hotfix 1 released to districts – 1/22/2021
- Hotfix 2 released to districts – 3/3/2021
- Hotfix 3 released to districts – 4/9/2021
- Hotfix 4 released to districts – 5/6/2021



# Release 8.0 Hotfixes

- Hotfix 5 is planned for release in August.
  - Many fixes included relating to:
    - SunGuide Performance
    - Reporting
    - Response Plans
    - FHP Alerts
    - RISC configuration
  - Hotfix 5 may also include a few enhancements.

## Release 8.1

- On schedule for release later this year.
- Enhancements include:
  - SG-3335 Alert the operator when a travel time is higher than normal
  - SG-4209 Use polyline instead of a single point for road closures
  - SG-4985 Ability to configure response plan search radius by event type
  - SG-5065 Add support for authentication via Active Directory
  - SG-3338 Allow floodgates to be scheduled through SAS
  - G-5278 Blank Out Signs and Over Height Vehicle Detection Devices Integration
  - SG-5236 TPS Alarm when a Space has been Occupied for an Extended Time
  - Integration of various WWD detection devices



# District Reps for 8.1 IV&V Testing

- CO will coordinate schedule and logistics for districts who would like to participate.



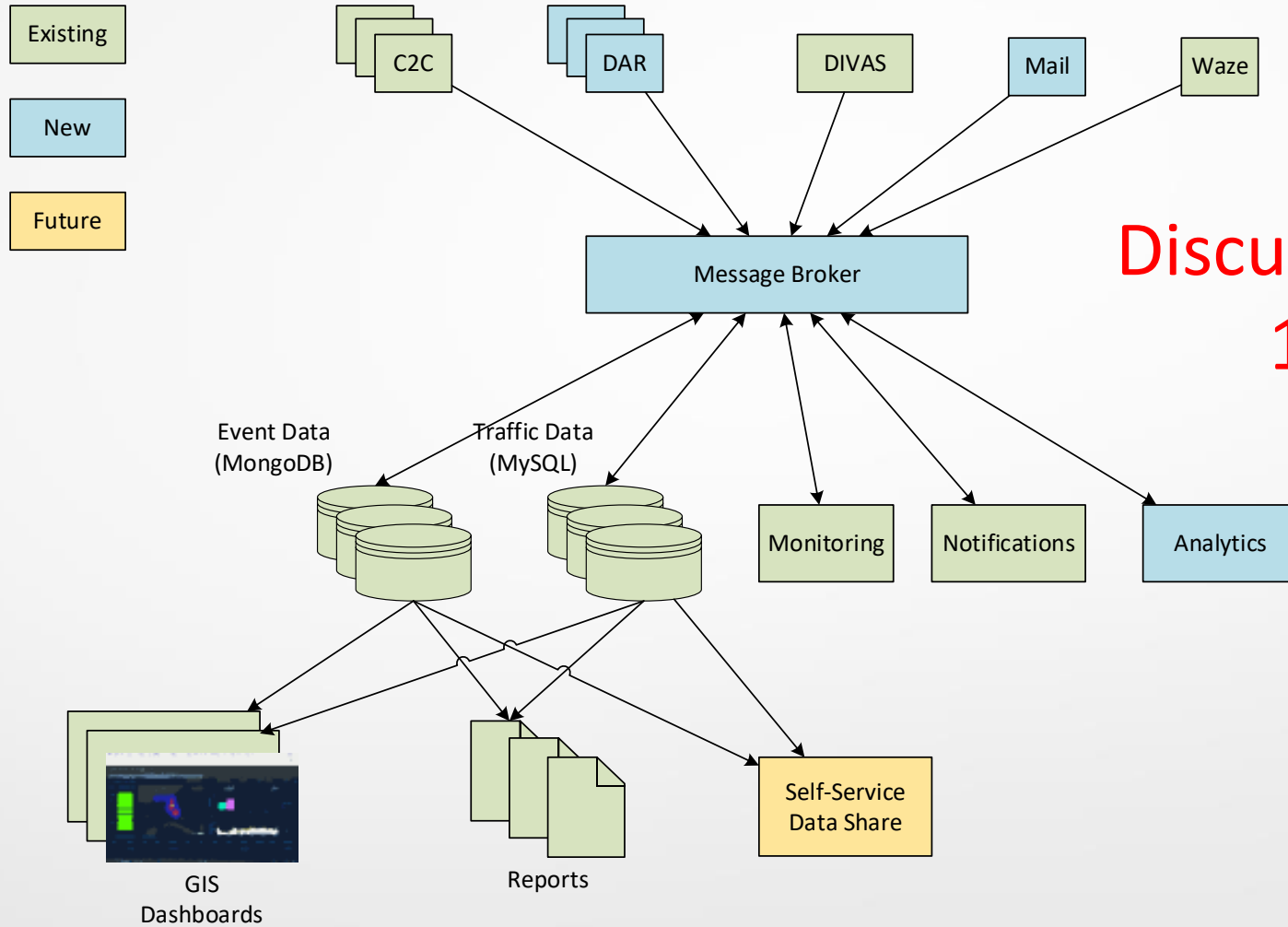


## Update

# SG-5300 - Access to district SunGuide data from the Central Office

Mark Dunthorn, HNTB

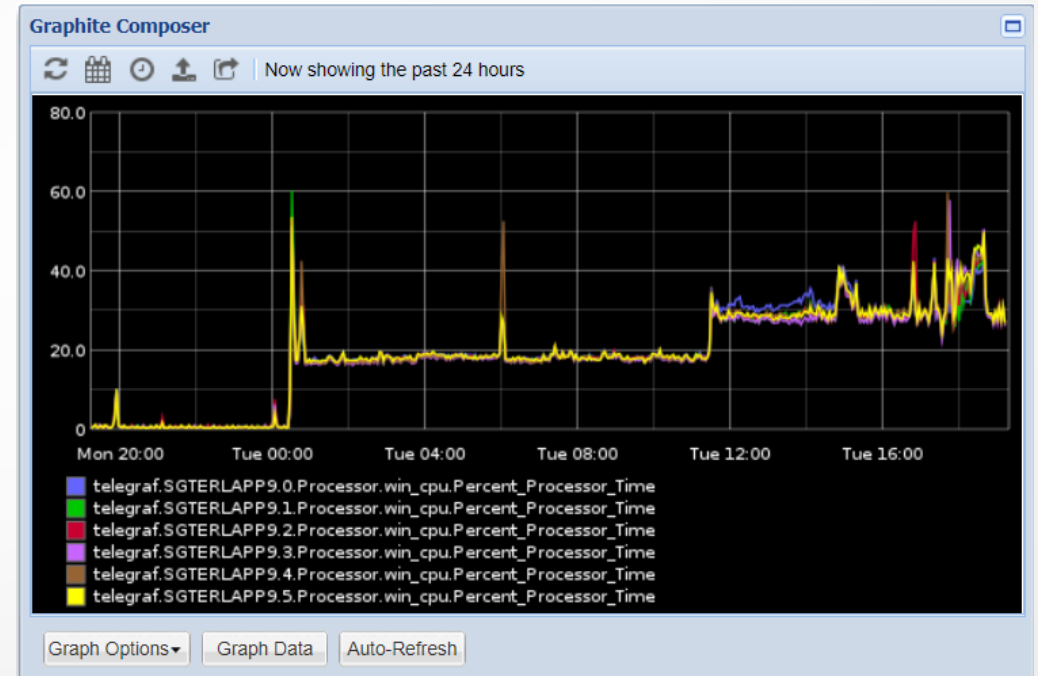
# TERL Data Infrastructure



Discussed at CMB  
1/28/21

# DAR Performance

- DAR zips TSS and EM updates every 30 seconds, transfers via FTP to RITIS
- Typically takes about 15 seconds (500 simulated detectors; writing locally)



Measurable impact but not unmanageable.



# Next Steps

Task	Date
Prep and test infrastructure	April/May
Support districts in deploying 2 <sup>nd</sup> DAR instance	<del>June/July</del> August/September
Enhance ingesters	June - August
Cutover dashboard pipelines	<del>September</del> October



QUESTIONS?

COMMENTS?

Mark Dunthorn, HNTB

[Mark.Dunthorn@dot.state.fl.us](mailto:Mark.Dunthorn@dot.state.fl.us)



# Supported Microsoft Products

Mark Dunthorn, HNTB



# Supported Microsoft Products

- Server: Windows Server 2016, 2019
- Database: SQL Server 2016, 2017, 2019
  - We're only going to test MSSQL 2016, 2019 installed on Windows Server 2016
- Operator Workstation: Windows 10



QUESTIONS?

COMMENTS?





**FYI**

# SG-5585 - CV Connected Vehicle App SunGuide Support Request (I-4 Frame)

Mark Dunthorn, HNTB

# TIM Categories

- Current State
  - Traveler Incident Messages (TIM) are all freeform messages and users have to input them each time (unless suggested by EM).
  - All messages are treated the same way (PSA, EM, TVT, etc.).

# TIM Categories

- Requested Enhancements
  - Allow the user to select a category for the TIM message that would be saved in the database along with the message.
  - Create a message library specifically for TIMs.
    - Nested Folder structure similar to DMS message library.
    - Category would be selectable as part of the saved message.



QUESTIONS?

COMMENTS?

Mark Dunthorn, HNTB

[Mark.Dunthorn@dot.state.fl.us](mailto:Mark.Dunthorn@dot.state.fl.us)



# Enhancement #1:

## SG-5782/5660 - RISC Module Enhancements

Tucker Brown

# Enhancement Ideas

- Generate and send an email to a predetermined group for a RISC activation (configurable).
- When a contact is specified, add the contact information into the RISC chronology.
- When a comment is entered by the user, add the entry into the RISC chronology.

# Enhancement Ideas

- Rename “All Lanes Cleared” to “RISC Complete”.
  - Intent is to signify the end of the RISC which may extend past any lane blockage.
- The rename requested above also corrects an issue about arriving equipment after the lanes are cleared. By indicating the RISC is complete, no more equipment should be arriving.



LOE



- Estimate: \$9k





QUESTIONS?

COMMENTS?



# VOTE NOW

Select the link for: <https://www.questionpro.com/t/ABslzZnkat>

**Enhancement #1:** SG-5782/5660 - RISC Module Enhancements




## Enhancement #2:

# SG-4968 - Wrong Way Detection

# Pop-Up Alerts

Tucker Brown

# Current State








Detection...	Speed	Location	Notification Device	Associated Event	Snapshot(s)	Direction
09/17/2019 1...		Northbound Floridas Turnpike [25972629, -8024...	TAPCO Wrong Way Demo			

- Location information shows Roadway, Direction and Lat/Lon

# Enhancement

- Separate the fields and add the location description for the device configurations.
- Name of the device is already shown in the alert.

Wrong Way Device Configuration

Name	el Dir.	Manufacturer	Detector	Roadway	Direction	Location Desc.	Latitude	Longitude	DMS Search Distan...	Response Plan
821-033_4-SB-VDS...		Wavetronix	821-033_4-SB-VDS...	Floridas Turnpike	Southbound	821-033.4-SB	25883550	-80388593	10	No Plan Activation...
821-034_6-SB-VDS...		Wavetronix	821-034_6-SB-VDS...	Floridas Turnpike	Southbound	821-034.6-SB	25894592	-80387821	10	No Plan Activation...
821-035_2-NB-RM...		Tapco		SR-821	Northbound	821-035.2-NB	25902362	-80383387	10	No Plan Activation...
821-035_2-SB-RMP...		Tapco		SR-821	Southbound	821-035.2-SB	25904018	-80385528	10	No Plan Activation...
821-035_9-SB-VDS...		Wavetronix	821-039_9-SB-VDS...	Floridas Turnpike	Southbound	821-035.9-SB	25910883	-80381555	10	No Plan Activation...
821-042_6-SB-VDS...		Wavetronix	821-042_6-SB-VDS...	Floridas Turnpike	Southbound	821-042.6-SB	25970931	-80303621	10	No Plan Activation...



LOE



- Estimate: \$2k



QUESTIONS?

COMMENTS?



# VOTE NOW

Select the link for: <https://www.questionpro.com/t/ABslzZnkai>

**Enhancement #2:** SG-4968 - Wrong Way Detection Pop-Up Alerts





## Enhancement #3:

SG-5865 - Improve EM DMS suggestions if message does not fit

Tucker Brown



# Current State and Enhancement



- Current State

- In response plans, when a message is too long for a sign, the sign is returned as part of the plan, but the message is blank.
  - Operators have to add a message or remove the sign to activate the plan.

- Enhancement

- Add the error message (ex. "Message too long") and the originally generated message to the response plan item so it can be used by the user to create the message on the sign.



LOE



- Estimate: \$10k



QUESTIONS?

COMMENTS?



# VOTE NOW

Select the link for: <https://www.questionpro.com/t/ABslzZnkY2>

**Enhancement #3:** SG-5865 - Improve EM DMS suggestions if message does not fit



## Enhancement #4:

SG-5282 - Change "Terminate Schedule" in SAS to also remove DMS from device queue

Tucker Brown



# Current State and Enhancement



- Current State

- When disabling a schedule that contains Scheduled Items that are DMS messages, the message remains on the sign and no ending action is performed.

- Enhancement

- When schedules are disabled, the active scheduled actions in the schedule perform the ending action.
  - Ex. Sign messaging is removed from the signs.



LOE



- Estimate: \$3k





QUESTIONS?

COMMENTS?

# VOTE NOW

Select the link for: <https://www.questionpro.com/t/ABslzZnkaz>

**Enhancement #4:** SG-5282 - Change "Terminate Schedule" in SAS to also remove DMS from device queue



**Enhancement #5:**  
**SG-5706 - Add timestamp in**  
**SunGuide incident when**  
**Executive Notification**  
**Emails are sent**  
**Tucker Brown**



# Current State and Enhancement



- Current State
  - Executive Notifications are logged in the event when the notification is GENERATED, but nothing is logged when the notification is sent.
- Enhancement
  - Add a chronology entry when the Executive Notification is sent.



LOE



- Estimate: \$2k



QUESTIONS?

COMMENTS?



# VOTE NOW

Select the link for: <https://www.questionpro.com/t/ABslzZnka4>

**Enhancement #5:** SG-5706 - Add timestamp in SunGuide incident when Executive Notification Emails are sent



# Enhancement #6: SG-5668 - WWD Detection on Mainlines using MVDS Tucker Brown





# Background



- Mainline detection of WWD events using the directional bin has already been implemented as a test for D4.
  - These are not currently hooked into the WWD module.
- D4 has gathered the data and written a full ConOps for this effort.

# Enhancement

- Create an association between mainline MVDS links that allows detection of consecutive links.
- Trigger WWD detection based on the directional bin of consecutive MVDS.
  - Configurable number of consecutive links
  - Time constraints for consecutive detections
  - Same alert functionality as ramp WWD detection
- Allow association of mainline WWD detections to existing WWD events for tracking

# Enhancement

- Links on the map should flash when mainline detection is triggered.
  - Consecutive detections should flash but suppress alerts.
  - Smart enough to link Out-of-Service or Failed detectors with downstream detectors.
- Disable WWD detection on some mainline MVDS as needed (Construction, etc.).



LOE



- Estimate: \$50k



QUESTIONS?

COMMENTS?



# VOTE NOW

Select the link for: <https://www.questionpro.com/t/ABslzZnka8>

**Enhancement #6:** SG-5668 - WWD Detection on Mainlines using MVDS



## Enhancement #7:

SG-4806 - Response Plan "511 ATIS"  
preview section does not match  
what is posted to FLATIS

Tucker Brown



# Current State



- The preview of the 511 item in the response plan does not match the output at 511.
  - Response Plan Generation "511 ATIS" Preview window, at the top of a suggested response plan.
    - Location Long Name (As part of Location Config)





# Current State



- The actual event location that a DMS will display, as populated by the Response Plan
  - Reference Point (Name in Location Config) (Field populated from Reference Point Long name, in Reference Point config)
- The location that FLATIS displays on the actual site.
  - Reference Point (Name in Location Config) (Field populated from Reference Point Long name, in Reference Point config)



# Enhancement



- Proposed Change
  - Change the Preview window of the response plan to:
    - Reference Point (Name in Location Config) (Field populated from Reference Point Long name, in Reference Point Config)
  - Would make them consistent across all views.



LOE



- Estimate: \$2k



QUESTIONS?

COMMENTS?

# VOTE NOW

Select the link for: <https://www.questionpro.com/t/ABslzZnkbH>

**Enhancement #7:** SG-4806 - Response Plan "511 ATIS" preview section does not match what is posted to FLATIS



# Enhancement #8: SG-5533 - Operator Map OneClick Installation Security Issue Tucker Brown

# Current State and Enhancement

- Current State
  - The Operator Map is installed in a user folder and the path changes with every map update.
  - For districts using firewall rules, this means they have to update the firewall rules for every map update.
- Enhancement
  - Build a regular application installer for the map.
    - Would allow specifying the installation path
    - Map would still check for updates and provide self-updating behavior



LOE



- Estimate: \$50k





QUESTIONS?

COMMENTS?



# VOTE NOW

Select the link for: <https://www.questionpro.com/t/ABslzZnkbS>

**Enhancement #8:** SG-5533 - Operator Map OneClick Installation  
Security Issue



# Enhancement #9: SG-5372 - Email Template Enhancement Request Tucker Brown



# Proposed Change



- Response Plans will now include a template for creating emails.
- Add templated fields to put in the Operator's first and last name with an email address.
  - Might also need an option to pull from config file if we need a common name/email.
- Add templated field to list Notified and On-Scene Core Responder.
  - Responders would be removed after they depart.



LOE



- Estimate: \$5k



QUESTIONS?

COMMENTS?



# VOTE NOW

Select the link for: <https://www.questionpro.com/t/ABslzZnkbc>

**Enhancement #9:** SG-5372 - Email Template Enhancement Request



# Enhancement #10:

## SG-5396 - Associate Event with Managed Lanes Action List Execution Tucker Brown





# Current State and Enhancement



- Current State
  - Current MLS Action Lists are initiated by a user and do not allow association with an event nor audit.
- Enhancement
  - Add the optional ability to select an open event to associate to list being run by the user.
  - Event would be logged with the history of the execution of the list.
  - Add an event chronology entry indicating the action was started.
  - Add an event chronology entry indicating the results of the list execution.
  - Ability to audit and event to add an Action List execution.
    - Add to event chronology and Action List execution archive.



LOE



- Estimate: \$33k



QUESTIONS?

COMMENTS?



# VOTE NOW

Select the link for: <https://www.questionpro.com/t/ABslzZnkbj>

**Enhancement #10:** SG-5396 - Associate Event with Managed Lanes  
Action List Execution



# Open Discussion

Amy DiRusso, P.E., FDOT D3  
CMB Chairman



# Review Action Items

Amy DiRusso, P.E., FDOT D3  
CMB Chairman