



# Change Management Board

February 8, 2022



# Welcome and Call for Quorum

Amy DiRusso, P.E., FDOT D3  
CMB Chairman



# Agenda



Time	Item	Lead
1:00 – 1:05	Welcome and Call for Quorum	Amy DiRusso
1:05 – 1:10	Previous Meeting Action Items	Amy DiRusso
1:10 – 1:20	SunGuide Software Update	Christine Shafik
1:20 – 1:30	<b><u>Enhancement #1</u></b> SG-6120 - Allow Saving Configuration of Items without Errors Despite Errors in Other Items of the Same Type ( <b>VOTE</b> )	Tucker Brown
1:30 – 1:40	<b><u>Enhancement #2</u></b> SG-5456 - "TMC Notified" for all notified times regardless of whether notified box is checked ( <b>VOTE</b> )	Tucker Brown
1:40 – 1:50	<b><u>Enhancement #3</u></b> SG-6072 - Vehicle Alert dialog does not pop up when minimized ( <b>VOTE</b> )	Tucker Brown
1:50 – 2:00	<b><u>Enhancement #4</u></b> SG-6036 - EM selects predefined group of event attributes based on event type ( <b>VOTE</b> )	Tucker Brown



# Agenda



Time	Item	Lead
2:00 – 2:10	<b><u>Enhancement #5</u></b> SG-5810 - Copy a SAS Plan ( <b>VOTE</b> )	Tucker Brown
2:10 – 2:20	<b><u>Enhancement #6</u></b> SG-5215 - SAS Missing Merge with Travel Time Option ( <b>VOTE</b> )	Tucker Brown
2:20 – 2:30	<b><u>Enhancement #7</u></b> SG-6142 - Add a "Submit Crash Report" option for Operator Map Failures ( <b>VOTE</b> )	Tucker Brown
2:30 – 2:40	<b><u>Enhancement #8</u></b> SG-6073 - Make SunGuide usernames case insensitive ( <b>VOTE</b> )	Tucker Brown
2:40 – 2:50	<b><u>Enhancement #9</u></b> SG-6039 - Temporary "Allowed Word" option for authorized users ( <b>VOTE</b> )	Tucker Brown
2:50 – 3:00	<b><u>Enhancement #10</u></b> SG-6015 - TPAS prompt for verifying available spaces for CO reporting ( <b>VOTE</b> )	Tucker Brown



# Agenda



Time	Item	Lead
3:00 – 3:10	<u><a href="#">Enhancement #11</a></u> SG-5386 - RPG Email Contains Incompatible Line Returns (VOTE)	Tucker Brown
3:10 – 3:20	<u><a href="#">Enhancement #12</a></u> SG-4941 - Emails for Device Issues (VOTE)	Tucker Brown
3:20 – 3:30	<u><a href="#">Enhancement #13</a></u> SG-5849 - New Report – Cameras that haven't been used (VOTE)	Tucker Brown
3:30 – 3:40	SG-5143 - Make Chronology report be able to be generated entirely or only in sections of interest (Non-Voting Item)	Tucker Brown
3:40 – 3:55	Open Discussion	Amy DiRusso
3:55 – 4:00	Review Action Items	Amy DiRusso



# Previous Meeting Action Items

Amy DiRusso, P.E., FDOT D3

CMB Chairman



# Previous Meeting Action Items

Owner	Action Item
FDOT CO / All Districts	Derek Vollmer asked districts for input on what functionality in the districts' WWD systems not currently in SunGuide or not following specs.
FDOT CO	John Hope asked for a list of supported products to be provided with each release.
SwRI	Revisit EM response plans and messaging related to one of the presented Jira issues and present details at the design review.
District 1	Update voting members and send to Amy.
District 5	Update voting members and send to Amy.
FDOT CO / SwRI	Revisit SG-5849 - New Report – Cameras that haven't been used at SSUG for further investigation of additional functionality.



# Previous Meeting Action Items

Owner	Action Item
SwRI	Update scope and LOE for SG-5143 - Make Chronology report be able to be generated entirely or only in sections of interest
All Districts	Send Christine Shafik their input on any lessons learned during configuration and deployment of SunGuide 8.0.
All Districts	Create Jira tickets and send Christine Shafik any priorities to be scheduled for SSUG for consideration to be included in next major release.





# SunGuide Software Update

Christine Shafik, PE, PMP, CPM, FCCM, FCCN, CGB  
FDOT State TSM&O Software Engineer



# Recent SunGuide Releases

- R8.1 was sent to the districts on 11/10/2021 for installation in test environments.
- D6 installed the R8.1 Pilot Deployment in production on 11/16/2021.
- CO gave the go-ahead for statewide deployment of R8.1 in production on 12/16/2021.
- R8.1 HF1 was released to districts on 1/11/2022.
- R8.0 HF6 was released to districts on 1/14/2022.



# SunGuide R8.1 HF2

## ○ Enhancements

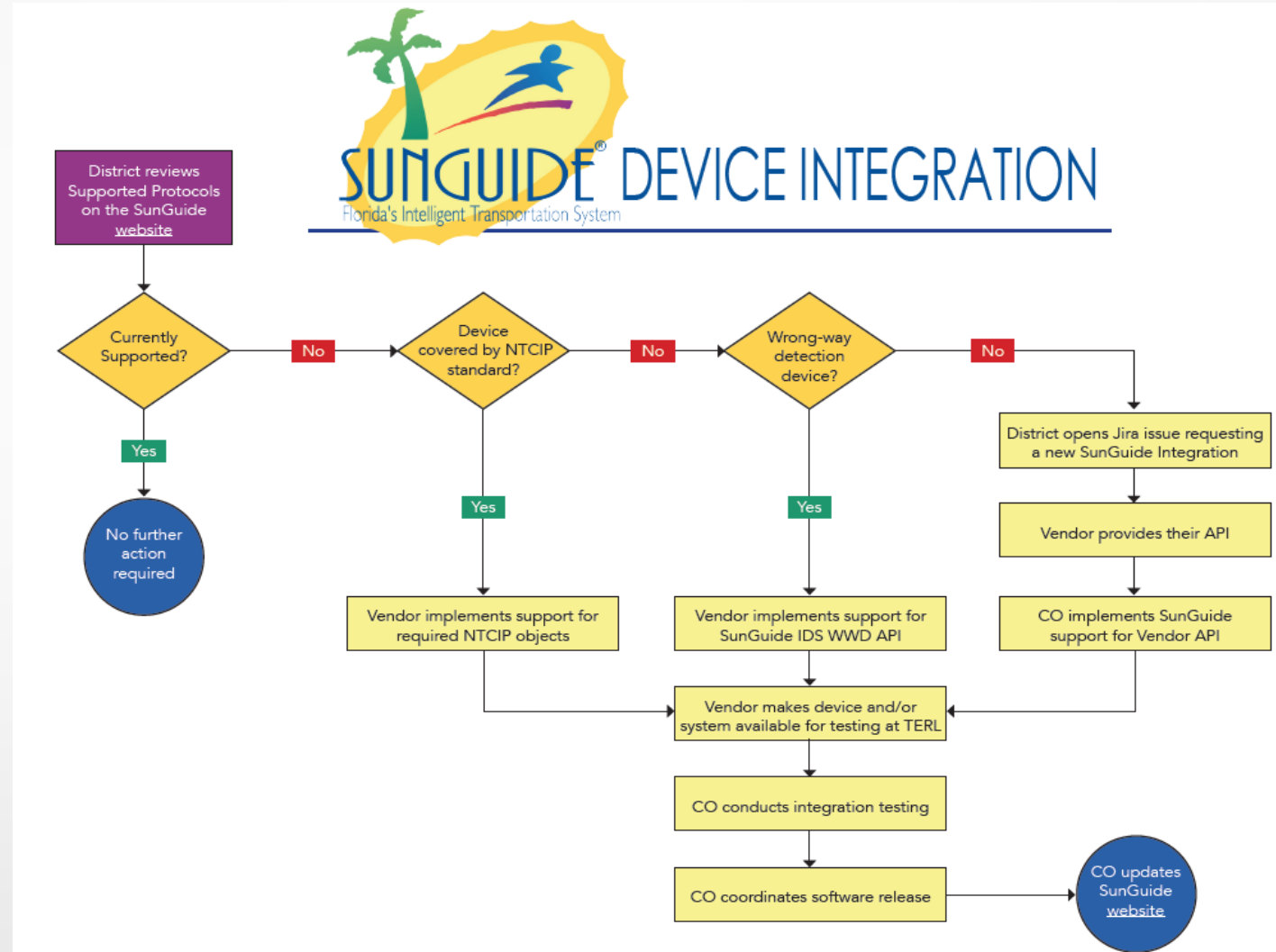
- SG-5585 - CV Connected Vehicle App SunGuide Support Request (I-4 FRAME)
- SG-6187 - CV Connected Vehicle App SunGuide Support Request (I-75 FRAME)
- SG-5994 - Update J2735Driver from "polygon(oldRegion)" to circle or lane?
- SG-5464 - Blue Band Integration – TPS
- SG-5774 - Integrate TAPCO/Blinklink Overheight Sensors into SunGuide
- SG-5487 - Develop Standard WWD Alert Input Interface
- SG-6105 - Replace SAE codes in SunGuide C2C events

# SunGuide R8.1 HF2

- Bug Fixes
  - SG-6157 - Change of reference point causes EM to fail authentication
  - SG-6147 - Predefined Plans Not Saving DMS Template Tags
  - SG-6141 - C2C Subscriber Fails to Update a Few Minutes After Restart
  - SG-6136 - Bridge Preemption not Showing in FL-ATIS
  - SG-6060 - SunGuide Playing Alert Sounds When Configured Not To
- The list of Bug Fixes included in the Hot Fix will continue to grow as more development is completed.

# SunGuide Device Integration

- SunGuide Device Integration Process Flowchart and Guidance Document
- Now available on SunGuide Software website





# SunGuide Device Integration

The screenshot shows a web browser window with the URL `sunguidesoftware.com/about-hub/supported-protocols`. The page header includes the SunGuide logo and the text "SunGuide® Software Florida's Advanced Traffic Management Systems Software Empowering Florida's Intelligent Transportation Systems Program". A navigation menu contains links for Home, About, Releases, Documents, Reports, Calendar, Contact Us, and Login. The main content area is titled "Protocols Supported by SunGuide (8.1 Release)". A red box highlights the "SunGuide® Software Device Integration Process" section, which contains the following text: "For information on the process to integrate new devices, systems, and functionalities with SunGuide Software, please reference the SunGuide® Software Device Integration Process document, which can be found [here](#). A companion infographic, the SunGuide® Software Device Integration Process Flowchart, can be found [here](#). Please consult these documents when seeking to interface new elements with SunGuide Software." Below this, there are two columns of supported protocols: "Dynamic Message Signs (DMS)" and "Traffic Detection (Point-based Detectors)".

**Protocols Supported by SunGuide (8.1 Release)**

*SunGuide® Software Device Integration Process*

For information on the process to integrate new devices, systems, and functionalities with SunGuide Software, please reference the SunGuide® Software Device Integration Process document, which can be found [here](#). A companion infographic, the SunGuide® Software Device Integration Process Flowchart, can be found [here](#). Please consult these documents when seeking to interface new elements with SunGuide Software.

**Dynamic Message Signs (DMS)**

- NTCIP 1203, FDOT MIB (Sep 2001)
- NTCIP 1203 v02.39b (Nov 2010)
- Mark IV - I95: Document Number A316111-102 REV. A8 (June 26, 2001)
- Mark IV - Turnpike: Document Number A316111-145 Rev.A2 (Sept 26, 2000)
- SunGuide Trailblazer - Kimley-Horn, 2000

**Traffic Detection (Point-based Detectors)**

- BiTrans B238-I4
- EIS RTMS, Issue 2 (April 2003)
- IIS G4
- Wavetronix RTMS: SS105 SmartSensor Data Protocol V2.02
- Canoga Microloops, TM-2003-8 (June 2003)
- Wavetronix HD: Z1 SmartSensor Data Protocol
- Peek Traffic

○ <http://sunguidesoftware.com/about-hub/supported-protocols>



# Announcements



- Updated map tiles, based on the 4th quarter 2021 shape files, are available on the Statewide Share. There's a README file with installation instructions included.



## Enhancement #1:

SG-6120 - Allow Saving  
Configuration of Items without  
Errors Despite Errors in Other  
Items of the Same Type

Tucker Brown



# Issue and Proposed Enhancement

- Issue
  - When configuring items in the system, ANY validation issue prevents the user from saving.
    - Error does not need to be related to the line attempting to be saved.
- Proposed Enhancement
  - 2 Levels of Validation
    - Level 1 – Can the Added/Modified/Deleted row be saved?
      - Allow Saving
    - Level 2 – Are there other validation issues?
      - Show an error but do not prevent saving



LOE



- Estimate: \$78k



QUESTIONS?

COMMENTS?



# VOTE NOW

Select the link for: <https://www.questionpro.com/t/ABslzZrDCD>  
**Enhancement #1:** SG-6120 - Allow Saving Configuration of Items without Errors Despite Errors in Other Items of the Same Type



## Enhancement #2:

SG-5456 - "TMC Notified" for all notified times regardless of whether notified box is checked

Tucker Brown

# Issue

- When the notified timestamp is entered for an event, the chronology lists it as “TMC Notified” and the responder.
- If the “Notified by TMC” box is checked to the left of the timestamp, the chronology entry looks the same.

▲ Group: Core Responders				
D2 Road Rangers	<input type="checkbox"/>	09/15 18:53:21 ▼	09/15 19:27:03 ▼	09/15 19:44:00 ▼
FHP	<input type="checkbox"/>	09/15 18:51:54 ▼	09/15 19:00:16 ▼	09/15 19:45:11 ▼
Maintenance Asset Mgr	<input type="checkbox"/>	09/15 19:28:41 ▼	No date/time ▼	No date/time ▼
JSO	<input type="checkbox"/>	No date/time ▼	No date/time ▼	No date/time ▼
Emergency Medical (EMS)	<input type="checkbox"/>	No date/time ▼	No date/time ▼	No date/time ▼
Fire Department	<input type="checkbox"/>	No date/time ▼	09/15 19:12:39 ▼	09/15 19:39:54 ▼
Wrecker Driver	<input checked="" type="checkbox"/>	09/15 19:10:49 ▼	09/15 19:28:43 ▼	09/15 19:39:52 ▼



# Proposed Enhancement



- Propose changing the chronology entry to match the situation.
- Entry will read “TMC Notified \*Agency\*” if the box is checked.
- Entry will read “\*Agency\* Notified TMC” if the timestamp is entered without the checkbox checked.



LOE



- Estimate: \$3k





QUESTIONS?

COMMENTS?



# VOTE NOW

Select the link for: <https://www.questionpro.com/t/ABslzZrDDa>  
**Enhancement #2:** SG-5456 - "TMC Notified" for all notified times  
regardless of whether notified box is checked



## Enhancement #3:

SG-6072 - Vehicle Alert dialog  
does not pop up  
when minimized

Tucker Brown



# Issue and Proposed Enhancement



## ○ Issue

- If the Vehicle Alert dialog box is closed, the window will recapture focus for a new alert.
- If the Vehicle alert dialog box is not closed (i.e., if it is minimized or becomes hidden behind other windows), the window does not recapture focus for a new alert.

## ○ Proposed Enhancement

- Re-focus the dialog for any vehicle alert.
- Other popups in the system would keep their current behavior.



LOE



- Estimate: \$2k



QUESTIONS?

COMMENTS?



# VOTE NOW

Select the link for: <https://www.questionpro.com/t/ABslzZrDDk>  
**Enhancement #3:** SG-6072 - Vehicle Alert dialog does not pop up  
when minimized



## Enhancement #4:

SG-6036 - EM selects predefined group of event attributes based on event type

Tucker Brown



# Issue and Proposed Enhancement

## ○ Issue

- Release 8.0 introduced the concept of attributes.
  - System-specified and custom attributes are supported.

## ○ Proposed Enhancement

- Add the ability to configure certain attributes that would automatically be set based on the event type selected.
  - Ex) Wrong Way Driver attribute would automatically be set for event with the type Wrong Way Driver.
    - Wrong Way Driver attribute would be converted to be configured as automatically set by default (as opposed to hard-coded).



LOE



- Estimate: \$16k



QUESTIONS?

COMMENTS?



# VOTE NOW

Select the link for: <https://www.questionpro.com/t/ABslzZrDDp>  
**Enhancement #4:** SG-6036 - EM selects predefined group of event attributes based on event type



# Enhancement #5: SG-5810 - Copy a SAS Plan

Tucker Brown



# Proposed Enhancement



- Allow a user to make a copy of a SAS Plan Item.
  - Name would change for uniqueness, but the devices or type would remain the same, with the same configuration.
  
- Allow a user to make a copy of a SAS schedule.
  - Schedule name and names of the scheduled items would change for uniqueness.



LOE



- Estimate: \$5k



QUESTIONS?

COMMENTS?





# VOTE NOW

Select the link for: <https://www.questionpro.com/t/ABslzZrDF8>

**Enhancement #5:** SG-5810 - Copy a SAS Plan

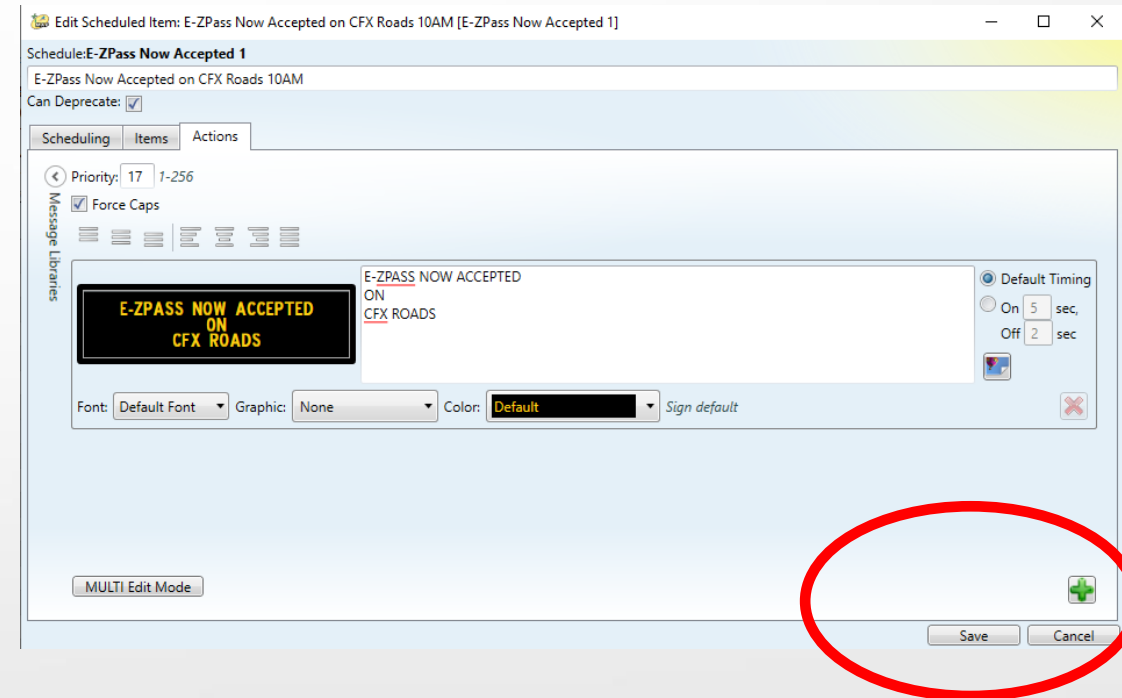
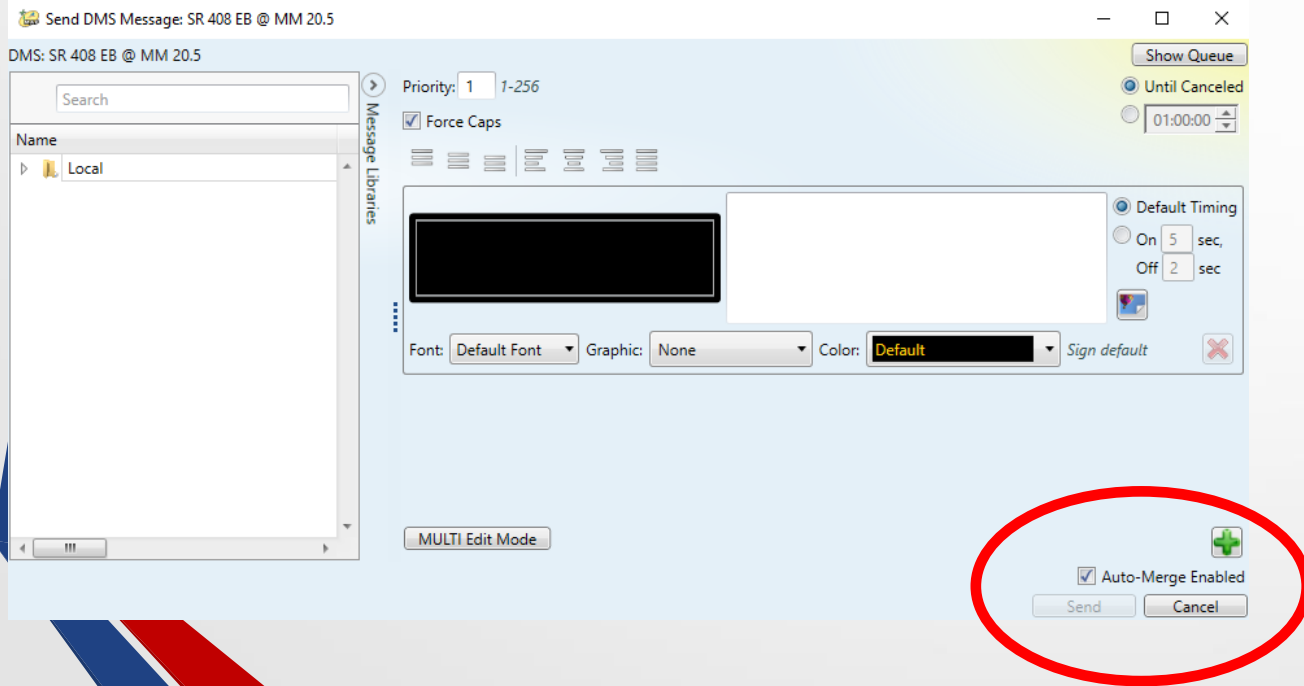


# Enhancement #6: SG-5215 - SAS Missing Merge with Travel Time Option

Tucker Brown

# Issue

- When scheduling DMS messages via SAS, there is no “Auto-Merge Enabled” checkbox.





# Proposed Enhancement



- Add “Auto-Merge Enabled” checkbox to SAS Action for DMS so that scheduled messages can be automatically merged with travel time messages.



LOE



- Estimate: \$2k



QUESTIONS?

COMMENTS?



# VOTE NOW

Select the link for: <https://www.questionpro.com/t/ABslzZrDG>

**Enhancement #6:** SG-5215 - SAS Missing Merge with Travel Time Option



# Enhancement #7:

## SG-6142 - Add a "Submit Crash Report" option for Operator Map Failures

Tucker Brown





# Issue



- When a map crashes, the user normally restarts the Map and continues on; may report the event later.
- When trying to gather information for specifics, it would be helpful to have information from the system and the operator where the crash occurred.



# Proposed Enhancement



- Add a “Report Crash” behavior for users which would show up when a Map has crashed.
- It would contain the operator, machine name, time, and specific comment from the user (if they need to add anything specific).
  - If a crash dump is programmatically possible, we would generate one, and notify of its location on the system.
- Can add these as direct reports to a separate JIRA system for evaluation by SwRI.



LOE



- Estimate: \$50k



QUESTIONS?

COMMENTS?



# VOTE NOW

Select the link for: <https://www.questionpro.com/t/ABslzZrDGM>  
**Enhancement #7:** SG-6142 - Add a "Submit Crash Report" option for  
Operator Map Failures



# Enhancement #8:

## SG-6073 - Make SunGuide usernames case insensitive

Tucker Brown



# Issue and Proposed Enhancement



- Issue
  - SunGuide usernames have traditionally been case sensitive.
  
- Proposed Enhancement
  - With the addition of Active Directory as a source for users, it was required to have case insensitivity for AD users.
  - This would also make SG-only usernames case insensitive.



LOE



- Estimate: \$6k





QUESTIONS?

COMMENTS?



# VOTE NOW

Select the link for: <https://www.questionpro.com/t/ABslzZrDGQ>  
**Enhancement #8:** SG-6073 - Make SunGuide usernames case insensitive



## Enhancement #9:

SG-6039 - Temporary "Allowed Word" option for authorized users

Tucker Brown



# Issue and Proposed Enhancement



## ○ Issue

- When sending DMS messages that might intentionally contain non-approved words, users may have to approve the words multiple times as they get pushed to the sign.
  - Ex) License plate numbers

## ○ Proposed Enhancement

- Approve the words for the lifetime of the message.
  - As long as the message stays in the queue (without any change in content), the message would NOT require re-approval.
- Start archiving the user who approved the messages.



LOE



- Estimate: \$16k



QUESTIONS?

COMMENTS?



# VOTE NOW

Select the link for: <https://www.questionpro.com/t/ABslzZrDGg>  
**Enhancement #9:** SG-6039 - Temporary "Allowed Word" option for authorized users



## Enhancement #10:

SG-6015 - TPAS prompt for  
verifying available spaces  
for CO reporting

Tucker Brown





# Issue and Proposed Enhancement



- Issue
  - The TPAS system runs independently of operations.
  - It is up to operations to manually verify counts at set intervals.
  
- Proposed Enhancement
  - An optional process would be created to have operations verify the counts of the TPAS sites.
  - At a configured interval, an IDS alert would appear to users with permission.
    - The window would bring up each TPAS site with associated cameras.



# Proposed Enhancement



## ○ TPAS Count Dialog

- Verify the count of spaces.
  - Option to change if incorrect.
- Operators would manually verify the count is correct on FL-511.
- Log the operator who made the check, date, facility, reported number of spaces, CCTV verification amount, if the count was accurate, and any offset amount.
  - Additional information will be gathered in Design Review.
- If site is Out of Service (or under construction?), an option would exist to mark it and move to the next site.



# Proposed Enhancement



- TPAS Count Dialog
  - Add a sleep or snooze that would cause the dialog to disappear but return at a specified interval.
  - Scheduled times the popup would appear would be configurable by time of day.
    - Potentially more checks are done during certain times of the day
- Reports may be generated to capture this information for output to a manager
- TPAS counts can be manually triggered, as well, to run on demand.



LOE



- Estimate: \$50k



QUESTIONS?

COMMENTS?



# VOTE NOW

Select the link for: <https://www.questionpro.com/t/ABslzZrDG4>

**Enhancement #10:** SG-6015 - Temporary "Allowed Word" option for authorized users



# Enhancement #11:

## SG-5386 - RPG Email Contains Incompatible Line Returns

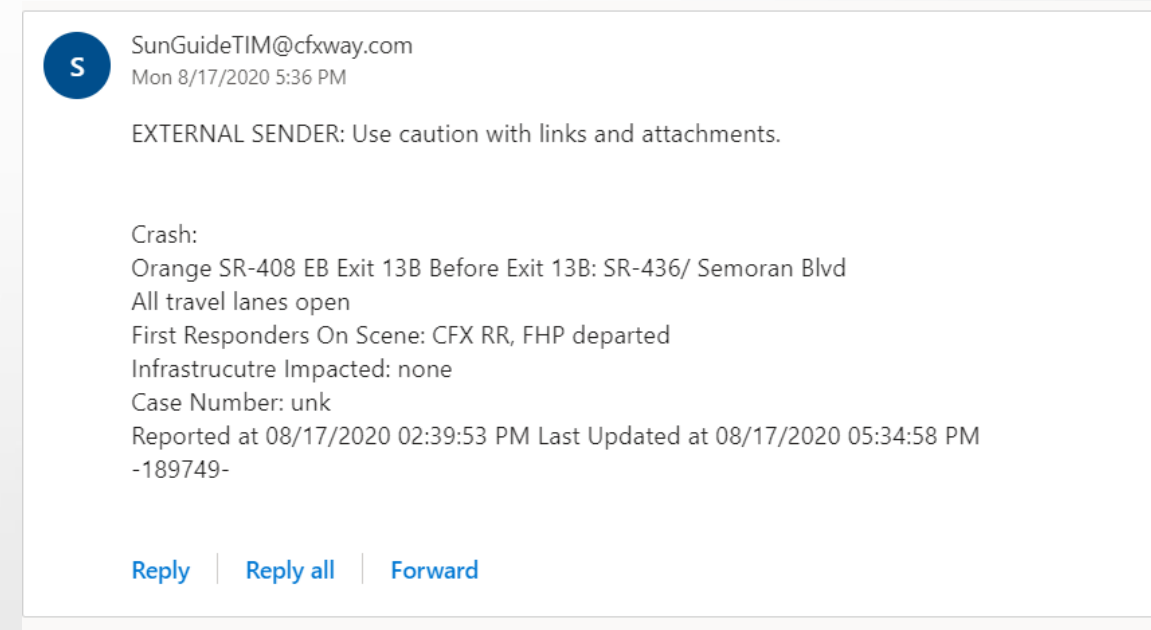
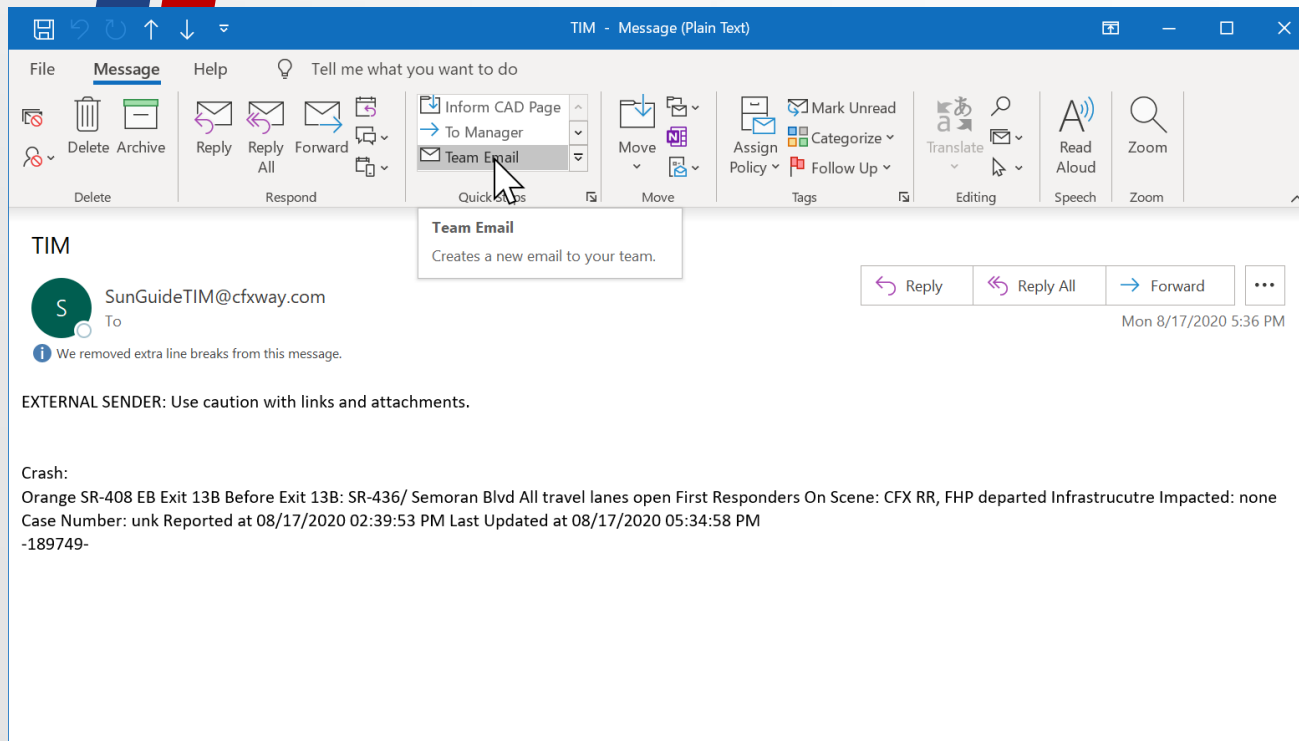
Tucker Brown



# Issue and Proposed Enhancement



- RPG email formats could potentially be displayed differently depending on Outlook or email viewing software:







# Proposed Enhancement



- SG Email Template could be modified to use HTML.
  - Still would be able to set the default template, as well as by event type.
  - This would look similar to the Executive Notification editor in a “Word-like” Rich Text Editor.

### Current Format

Crash:  
 Orange SR-408 EB Exit 13B Before Exit 13B: SR-436/ Semoran Blvd  
 All travel lanes open  
 First Responders On Scene: CFX RR, FHP departed  
 Infrastructure Impacted: none  
 Case Number: unk  
 Reported at 08/17/2020 02:39:53 PM Last Updated at 08/17/2020 05:34:58 PM  
 -189749-

### Example Format

<b>Crash</b>		
<b><u>#189749</u></b>		
<b>All travel lanes open</b>		
Orange County	SR-408 EB	Before Exit 13B: SR-436/ Semoran Blvd
First Responders On Scene	Infrastructure Impacted	Case Number
CFX RR FHP Departed	None	Unknown
Reported		Last Updated
08/17/2020 02:39:53 PM		08/17/2020 05:34:58 PM



LOE



- Estimate: \$29k



QUESTIONS?

COMMENTS?



# VOTE NOW

Select the link for: <https://www.questionpro.com/t/ABslzZrDHB>  
**Enhancement #11:** SG-5386 - RPG Email Contains Incompatible Line Returns



# Enhancement #12:

## SG-4941 - Emails for Device Issues

Tucker Brown



# Proposed Enhancement



- Allow the system to detect large system outages.
- Allow the user to define device groups (of any device type) and assign that device group to one or more email groups.
- Allow the user to define a percentage threshold for number of devices entering an Error or Failed state.
  - Add a potential option for adding an alarm for this condition to be sent to operators.
- Can turn the individual group's notifications on/off dynamically.



LOE



- Estimate: \$50k



QUESTIONS?

COMMENTS?





# VOTE NOW

Select the link for: <https://www.questionpro.com/t/ABslzZrDHG>  
**Enhancement #12:** SG-4941 - Emails for Device Issues



# Enhancement #13: SG-5849 - New Report – Cameras that haven't been used (Tabled from last CMB)

Tucker Brown

# Proposed Enhancement

## ○ Real Time Check

- A need was identified to track the operators' use of cameras.
  - Each camera will include a flag to indicate if the system should monitor it for use.
- A real time check would be done on a configurable interval to check that an operator has PTZ'ed a camera within a configurable time period.
  - **Interval would be set on a time-of-day basis with a list of cameras included to check for compliance.**
  - **Actions done by the SAS system (scheduled camera movements) would not be counted.**



# Proposed Enhancement



- Real Time Check (cont'd)
  - If cameras were found to be untouched, a pop-up notification would be sent to the Operator Map of users with permission.
    - List of cameras would be sent in the pop-up.
- Historical Reporting
  - A report would also be generated so that the same information could be reported in report form over a given time period.
    - **Interval and group of cameras to check would be parameters for the report.**
    - Actions done by the SAS system would be excluded from the report.



LOE



- Estimate: \$36k



QUESTIONS?

COMMENTS?



# VOTE NOW

Select the link for: <https://www.questionpro.com/t/ABslzZrDHL>  
**Enhancement #13:** SG-5849 - New Report – Cameras that haven't been used



**FYI:**

**SG-5143 - Make Chronology report  
be able to be generated entirely  
or only in sections of interest.**

Tucker Brown





# Proposed Enhancement



- Issue passed at last CMB, however additional functionality was proposed.
- Proposed Enhancement
  - Allow the user to generate the Chronology Report for an event but filter down to specific chronology items.
  - Example – Filter down to only the DMS items of the event to run a report on the DMS messages posted for the event.
  - Add same functionality to a RISC Chronology Report.
  - **Whitelist Report for types, as well as a Blacklist Report for types.**
- Updated Estimate: \$15k



QUESTIONS?

COMMENTS?



# Open Discussion

Amy DiRusso, P.E., FDOT D3  
CMB Chairman



# Review of Action Items

Amy DiRusso, P.E., FDOT D3

CMB Chairman

Have a Nice Day

