



# Change Management Board Meeting

Monday, May 11, 2015

Video Conference: CO-Burns Video Bridge 2

Audio Only: 850-414-3102

**Do NOT Put On Hold      Call is Being Recorded**

GoToMeeting:

<https://www2.gotomeeting.com/join/371021466>



# Welcome and Call for Quorum

Derek Vollmer, P.E., CMB Chairman



# Agenda



| Time        | Item  | Lead                       |
|-------------|---|----------------------------|
| 1:30 – 1:35 | Welcome and Call for Quorum                 | Derek Vollmer              |
| 1:35 – 1:40 | Previous Meeting Recap & Action Item Review | Derek Vollmer              |
| 1:40 – 1:50 | ITS WAN Update                              | Randy Pierce & Frank Deasy |
| 1:50 – 2:05 | SunGuide Software Update                    | Derek Vollmer              |
| 2:05 – 2:10 | RITIS Update                                | Derek Vollmer              |
| 2:10 – 2:20 | FL 511 DTN Weather Data Feed <i>(vote)</i>  | Russell Allen              |
| 2:20 – 2:40 | Waze Phase 2 <i>(vote)</i>                  | Clay Packard               |
| 2:40 – 3:00 | Wrong Way Driving <i>(vote)</i>             | Clay Packard               |



# Agenda



| Time        | Item   | Lead          |
|-------------|--|---------------|
| 3:00 – 3:10 | Break  |               |
| 3:10 – 3:40 | SSUG Small Enhancements <i>(vote)</i>  | Clay Packard  |
| 3:40 – 3:45 | Statewide ITS Architecture Update  | Derek Vollmer |
| 3:45 – 3:55 | Auto-Dismiss Already Detected Alerts <b>Upstream</b> (FP 2845) <i>(vote)</i> | Clay Packard  |
| 3:55 – 4:10 | Road Ranger GUI Improvements (FP 2661/3040) <i>(vote)</i>                    | Mark Laird    |
| 4:10 – 4:25 | Open Discussion  | Derek Vollmer |
| 4:25 – 4:30 | Review Action Items  | Derek Vollmer |

CMB agenda, slides, and attachments posted here:

[http://www.dot.state.fl.us/trafficoperations/ITS/Projects\\_Deploy/CMB.shtm](http://www.dot.state.fl.us/trafficoperations/ITS/Projects_Deploy/CMB.shtm)



# Previous Meetings Recap and Action Items Review

Derek Vollmer, P.E., CMB Chairman



# Previous Meeting Action Items



1. FTE to prepare white paper to document their efforts and findings on WWD and send out draft by next CMB. (Open Action Item)
2. CO to look into getting C2C connection data into RITIS. (Open Action Item)
3. CO to follow-up on Google Traffic data possibilities. (Open Action Item)



# Previous Meeting Action Items



4. ITS WAN to send IP Allocation Plan to all the Districts by the next CMB meeting. (Open Action Item)
5. CO to verify with Cambridge that HERE data won't be used for the annual report. (Open Action Item)
6. CO to distribute the SunGuide software GUI update schedule once they are received. (Open Action Item)



# ITS Telecommunications Update

Randy Pierce & Frank Deasy, P.E.





# ITS WAN Update



- FTE Tolls Middleware Application
  - FTE Tolls has requested a consolidated connection over the ITS WAN for all Districts
    - D6 has a Layer 3 Connection via ITS WAN
    - D4 still on separate Layer 2 Connection via separate FDOT fiber
  - FTE Tolls connection to the ITS WAN being upgraded to a Layer 3 connection with routing to support the 95Express project and future Managed Lanes projects
    - Southeast Fiber re-routing
      - D4 work is completed
      - Waiting for FTE approval to access splice enclosures
  - D5 to Turkey Lake – Redundancy connection
    - D5 work is completed
    - FTE fiber allocation along SR-528 is Green Buffer 33, 34, 35, and 36.



# ITS WAN Update



- FL-ATIS & VAS
  - Complete
- Tallahassee Fiber Ring
  - Installation scheduled to begin on the week of May 11<sup>th</sup>, 2015
- FTE RTMC Pompano
  - No connectivity beyond FL-ATIS
- Multicast Re-Addressing
  - Districts should re-address their multicast devices now to resolve any overlapping addresses
  - D3, D4 & D6 completed their multicast addressing
  - D1, D5, D7 & MDX are in process
  - D2 and FTE not implemented at Layer 3 at this time
  - Multicast video can then be shared statewide



# ITS WAN Update



- ITS WAN – District IP Re-allocation Effort
  - District 5 is actively migrating to assigned CIDR blocks and this step must be completed prior to statewide adoption.
  - District 6 and MDX are using new CIDR blocks for new deployments
- FTE Fiber Use Memorandum of Understanding Projects
  - Southeast Florida Fiber Deployment
  - Everglades Academy
  - District 5, Turkey Lake Redundancy Project
  - Managed Lanes / Tolls L3 redundancy Project



# ITS WAN Update



- ITS WAN – D5 to D7 Backbone Upgrade
  - Prepare for the D5 – Turkey Lake Redundancy Project
  - Upgrade to 10Gig
  - Reallocate existing equipment to spare inventory
- ITS WAN's new nomenclature
  - Statewide ITS Network (SITSN)
  - Will encompass the 10 Gigabit fiber backbone and Upgraded Statewide Microwave



# QUESTIONS?

Randy Pierce & Frank Deasy, P.E.

[Randy.Pierce@dot.state.fl.us](mailto:Randy.Pierce@dot.state.fl.us)

[Frank.Deasy@dot.state.fl.us](mailto:Frank.Deasy@dot.state.fl.us)



# SunGuide Software Update

Derek Vollmer, P.E., FDOT



# New Release 6.0 Hotfixes



- Hotfix 08 – FP 3119 – Nokia version 3.1.2 Support
- Hotfix 06 – FP 3018 – Response Plan Times in Database
- Hotfix 05 – FP 2912 – Add Filtering by C2C Network Id to DAR
- Hotfix 04 – FP 2922 – Wrong Way Driving



# Release 6.1



- Schedule:
  - FAT completed week of September 22
  - IV&V began November 2014
  - IV&V Phase 2 completed March 2015
  - IV&V Phase 3 expected May 2015
  - Release expected 2<sup>nd</sup> Quarter 2015
- Changes Impacting Other Systems
  - C2C
  - Permissions via SAA





# Release 6.2 Scope



- **Planned:**

- Map out of Internet Explorer
- Response Plan Enhancements
- DMS Force Caps and Force Blank on Failure
- Dismiss Redundant TSS Alerts
- Arterial Probe Algorithm
- Auto-Dismiss Already Detected Alerts (FP 2845)  
(Upstream Only modification pending approval)
- Discontinuous Lane Blockage
- Removal of Non-TSS Links (FP 2391)

- **Pending Approval:**

- Wrong Way Driving
- Waze Phase 2
- Road Ranger GUI Enhancements
- SSUG Small Enhancements



# Status 6.0 Upgrades



- District 6 Upgraded to Release 6.0 on April 30
- MDX to schedule upgrade



# QUESTIONS?

Derek Vollmer, P.E., FDOT

[Derek.Vollmer@dot.state.fl.us](mailto:Derek.Vollmer@dot.state.fl.us)



# RITIS Update

Derek Vollmer, P.E., FDOT



# HERE Real-Time Data on Traffic Map



Rttis Transportation System Status

Welcome [User] [Settings]

Incident List | **Traffic Map** | Incident Overview | Traffic Cameras | RSS Feed | VWS

Set Filters Use Night Colors Fullscreen

Applied Filters: Data Source is equal to FDOT. Incident Type is not equal to roadwork.

**Hide Layer List**

- Incidents and Events
- Dynamic Message Signs
- Traffic Detectors
- Traffic Cameras
- Road Weather
- Radio Scanners
- FITM Plans
- Evacuation Support
- Public Transit
- Points of Interest
- Metro Routes
- Probe Speed Data**
- Weather Radar
- Weather Alerts

**Probe Speed Data Sub-Layers**

- INRIX Speed Data Congestion
- HERE Speed Data Congestion**



# HERE Real-Time Data in Florida Analytics



RITIS Data Archive

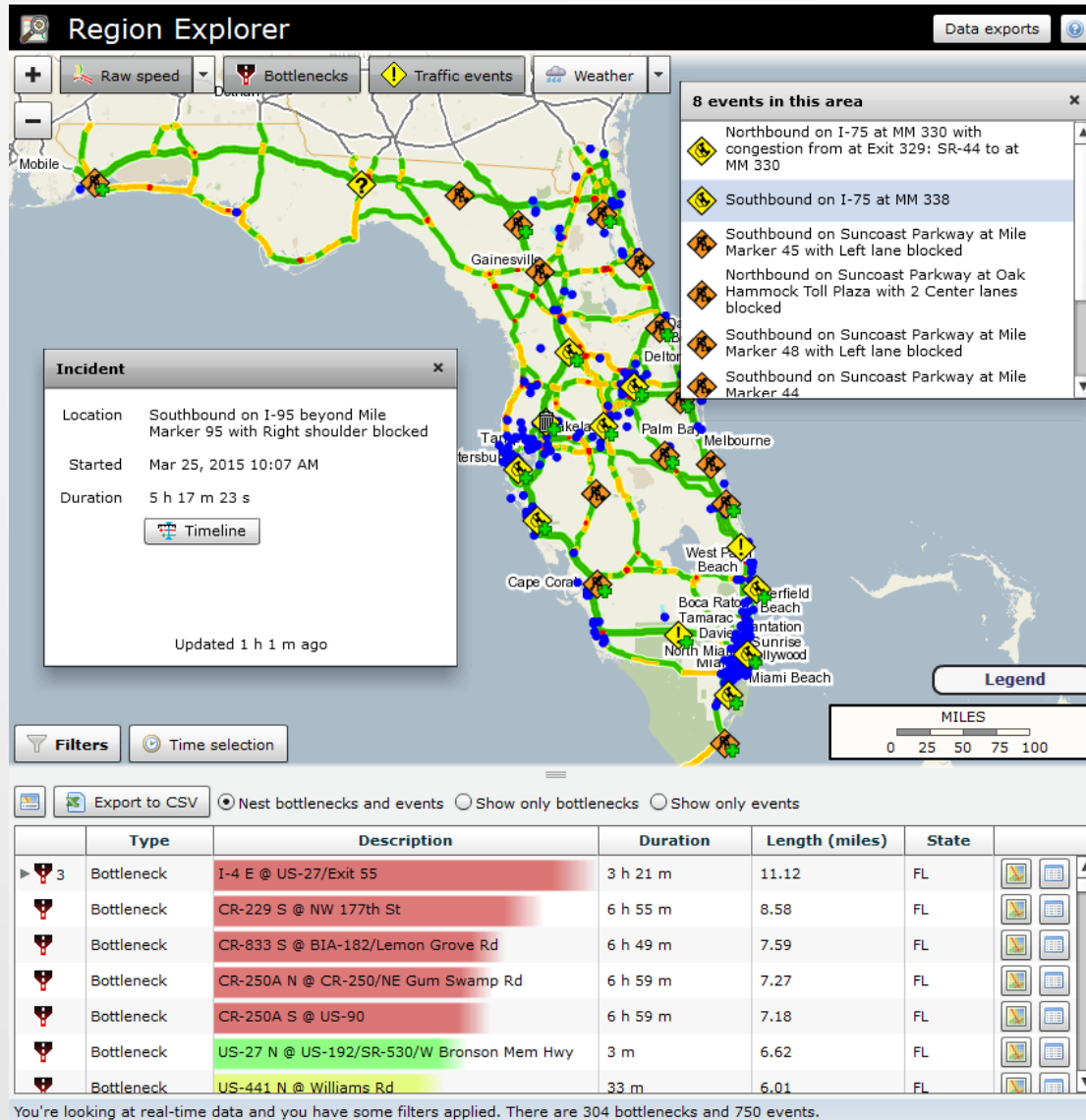
Event Query Tool | Detector Tools | Vehicle Probe Project Suite | **Florida Analytics**

## Florida Analytics Tools

|  |  |
|--|--|
| <b>NEW</b>   |  |
| <p><b>Region Explorer</b><br/>Explore the relationships between bottlenecks and traffic events in real-time and in the past.</p> | <p><b>Massive Raw Data Downloader</b><br/>Download raw probe data from our archive for offline analysis.</p>             |
| <p><b>Congestion Scan</b><br/>Analyze the rise and fall of congested conditions on a stretch of road.</p>                        | <p><b>Trend Map</b><br/>Create animated maps of roadway conditions.</p>  |
| <p><b>Performance Charts</b><br/>Chart performance metrics over time.</p>  | <p><b>Performance Summaries</b><br/>Report on Buffer Time Index, Planning Time Index, and other performance metrics.</p> |
| <p><b>Bottleneck Ranking</b><br/>Rank bottlenecks and discover which ones have the greatest impact.</p>                          | <p><b>Dashboard</b><br/>Create your own personal dashboards to monitor corridor performance in regions of interest.</p>  |
| <b>IMPROVED</b>  |  |



# Region Explorer in Florida Analytics



- Newly added tool in Florida Analytics
- Provides multiple layer view with filter and export ability
- View Timeline and other traffic event information from the map

You're looking at real-time data and you have some filters applied. There are 304 bottlenecks and 750 events.



# Dashboard in Florida Analytics



+ Add widget

### I-75 Speed and Travel Time Table

| Corridor        | Average Speed |         |          | Travel Time  |             |          |
|-----------------|---------------|---------|----------|--------------|-------------|----------|
|                 | Differential  | Current | Historic | Differential | Current     | Historic |
| I-75 Northbound | ↓ 1           | 68 mph  | 69 mph   | -            | 6 hr 40 min | -        |
| I-75 Southbound | 0             | 69 mph  | 69 mph   | -            | 6 hr 48 min | -        |

Updated Mar 25, 2015 3:40 PM (57s ago)

### I-10 Speed and Travel Time Table

| Corridor       | Average Speed |         |          | Travel Time  |             |             |
|----------------|---------------|---------|----------|--------------|-------------|-------------|
|                | Differential  | Current | Historic | Differential | Current     | Historic    |
| I-10 Eastbound | ↓ 1           | 67 mph  | 68 mph   | ↑ 1          | 3 hr 00 min | 2 hr 59 min |
| I-10 Westbound | 0             | 68 mph  | 68 mph   | 0            | 2 hr 55 min | 2 hr 55 min |

Loading... Updated Mar 25, 2015 3:40 PM (1m ago)

### I-95 Ranked Bottleneck Table

| Location                                  | Length(miles) | Duration    |
|---|---------------|-------------|
| 1 I-95 N @ SR-870/Commercial Blvd/Exit 32 | 3.68          | 53 min      |
| 2 I-95 N @ SR-822/Sheridan St/Exit 21     | 3.43          | 17 min      |
| 3 I-95 S @ SR-822/Sheridan St/Exit 21     | 3.42          | 23 min      |
| 4 I-95 S @ I-95 Hov Ln (South)            | 2.53          | 6 hr 15 min |
| 5 I-95 N @ 103rd St/SR-932/Exit 8         | 0.59          | 03 min      |

Updated Mar 25, 2015 3:40 PM (26s ago)

### I-95 Speed and Travel Time Table

| Corridor        | Average Speed |         |          | Travel Time  |             |          |
|-----------------|---------------|---------|----------|--------------|-------------|----------|
|                 | Differential  | Current | Historic | Differential | Current     | Historic |
| I-95 Northbound | ↓ 3           | 63 mph  | 66 mph   | -            | 6 hr 03 min | -        |
| I-95 Southbound | ↓ 4           | 62 mph  | 66 mph   | -            | 6 hr 11 min | -        |

Updated Mar 25, 2015 3:40 PM (29s ago)

### US-1 Speed and Travel Time Table

| Corridor         | Average Speed |         |          | Travel Time  |              |          |
|------------------|---------------|---------|----------|--------------|--------------|----------|
|                  | Differential  | Current | Historic | Differential | Current      | Historic |
| US-1 Northbou... | ↓ 5           | 34 mph  | 39 mph   | -            | 14 hr 27 min | -        |
| US-1 Southbo...  | ↓ 5           | 35 mph  | 40 mph   | -            | 14 hr 44 min | -        |

Loading... Updated Mar 25, 2015 3:39 PM (1m ago)

### US-1 Ranked Bottleneck Table

| State | Location                                   | Length(miles) | Duration    |
|-------|--|---------------|-------------|
| 1 FL  | US-1 S @ SR-9/27th Ave/Unity Blvd          | 1.85          | 4 hr 07 min |
| 2 FL  | US-1 N @ SR-858/Hallandale Beach Blvd      | 1.57          | 19 min      |
| 3 FL  | US-1 S @ I-595                             | 1.36          | 2 hr 13 min |
| 4 FL  | US-1 N @ 151st St                          | 1.08          | 2 hr 27 min |
| 5 FL  | US-1 N @ SR-860/186th St/Miami Gardens Dr  | 0.90          | 55 min      |
| 6 FL  | US-1 N @ SR-9/27th Ave/Unity Blvd          | 0.82          | 5 hr 39 min |
| 7 FL  | US-1 N @ Caribbean Blvd/200th St           | 0.74          | 05 min      |
| 8 FL  | US-1 S @ Davis Rd/80th St                  | 0.70          | 53 min      |
| 9 FL  | US-1 S @ SW 70th St/SW 58th Ave            | 0.70          | 45 min      |
| 10 FL | US-1 S @ SR-76/S Kanner Hwy/S Colorado Ave | 0.69          | 03 min      |

Updated Mar 25, 2015 3:40 PM (26s ago)

- Improved tool in Florida Analytics
- Save via Excel file or Screenshot
- Customization of regions of interest
- One Click Speed and Travel Time Table
- Data interaction from Dashboard
- Current, Historic and Differential Information Available





# RITIS Issues Update



- Old Info on Live Traffic Map – Resolved
- Zone Volume and Lanes Volume Sum Not Equal – Resolved
  - A filter was applied only to zones which has been removed.
- Organizational Issues and Detector Names – Resolved
  - Detector name is now showing the link name.
- Data Missing Temporarily – Resolved
  - Delay in data being available.
- Odd Detector Name Changes – Resolved
- Data Missing for I-275 between 54th Ave N and SR 60 – Resolved



# RITIS Issues



- Please send RITIS issues with detailed information to:  
[Derek.Vollmer@dot.state.fl.us](mailto:Derek.Vollmer@dot.state.fl.us), [Clay.Packard@dot.state.fl.us](mailto:Clay.Packard@dot.state.fl.us), and  
[Kelli.Moser@dot.state.fl.us](mailto:Kelli.Moser@dot.state.fl.us)



# QUESTIONS?

Derek Vollmer, P.E., FDOT

[Derek.Vollmer@dot.state.fl.us](mailto:Derek.Vollmer@dot.state.fl.us)



# FL 511 DTN Weather Data Feed *(with vote)*

Russell Allen, P.E., FDOT



# FL 511 DTN Weather Data Feed



| Weather Event                   | DTN | NWS/NOAA | Weather Event               | DTN | NWS/NOAA |
|---------------------------------|-----|----------|-----------------------------|-----|----------|
| Blizzard Warning                |     | ✓        | Mixed Precipitation         | ✓   | ✓        |
| Coastal Flood Watch             |     | ✓        | Rain                        | ✓   | ✓        |
| Costal Flood Warning            |     | ✓        | Severe Hail                 | ✓   | ✓        |
| Dust Storm Warning              |     | ✓        | Severe Thunderstorm         | ✓   | ✓        |
| Flash Flood Statement           |     | ✓        | Severe Thunderstorm Warning | ✓   | ✓        |
| Flash Flood Watch               |     | ✓        | Severe Thunderstorm Watch   | ✓   | ✓        |
| Flash Flood Warning             | ✓   | ✓        | Severe Weather Statement    |     | ✓        |
| Flood Advisory                  | ✓   | ✓        | Special Marine Warning      |     | ✓        |
| Flood Statement                 |     | ✓        | Special Weather Statement   |     | ✓        |
| Flood Warning                   | ✓   | ✓        | Strong Wind                 | ✓   | ✓        |
| Flood Watch                     | ✓   | ✓        | Strong Wind Gusts           | ✓   | ✓        |
| Fog                             | ✓   | ✓        | Tornado                     | ✓   | ✓        |
| Fog Advisory                    | ✓   | ✓        | Tornado Warning             | ✓   | ✓        |
| Freezing Precipitation Advisory | ✓   | ✓        | Tornado Watch               | ✓   | ✓        |
| Freezing Rain                   | ✓   | ✓        | Tropical Depression         | ✓   | ✓        |
| Heavy Rain                      | ✓   | ✓        | Tropical Storm              | ✓   | ✓        |
| High Wind Warning               | ✓   | ✓        | Tropical Storm Watch        |     | ✓        |
| High Wind Watch                 |     | ✓        | Tropical Storm Warning      |     | ✓        |
| Hurricane                       | ✓   | ✓        | Tsunami Watch               |     | ✓        |
| Hurricane Watch                 |     | ✓        | Tsunami Warning             |     | ✓        |
| Hurricane Warning               |     | ✓        | Wind Advisory               | ✓   | ✓        |
| Hurricane Statement             |     | ✓        | Winter Storm Watch          |     | ✓        |
| Light Rain                      | ✓   | ✓        | Winter Storm Warning        |     | ✓        |
| Light Snow                      | ✓   | ✓        |                             |     |          |



# FL 511 DTN Weather Data Feed



- Current: DTN Weather Data Feed used by FL 511
- Proposed: Use National Weather Service Feed or other free source for FL 511

Cost: Savings of \$89,000/year



# QUESTIONS?

*(VOTE)*

Russell Allen, P.E., FDOT

[Russell.Allen@dot.state.fl.us](mailto:Russell.Allen@dot.state.fl.us)



# Waze Phase 2

Clay Packard, P.E., Atkins/FDOT

Brian Ritchson, Atkins/FDOT



# Overview

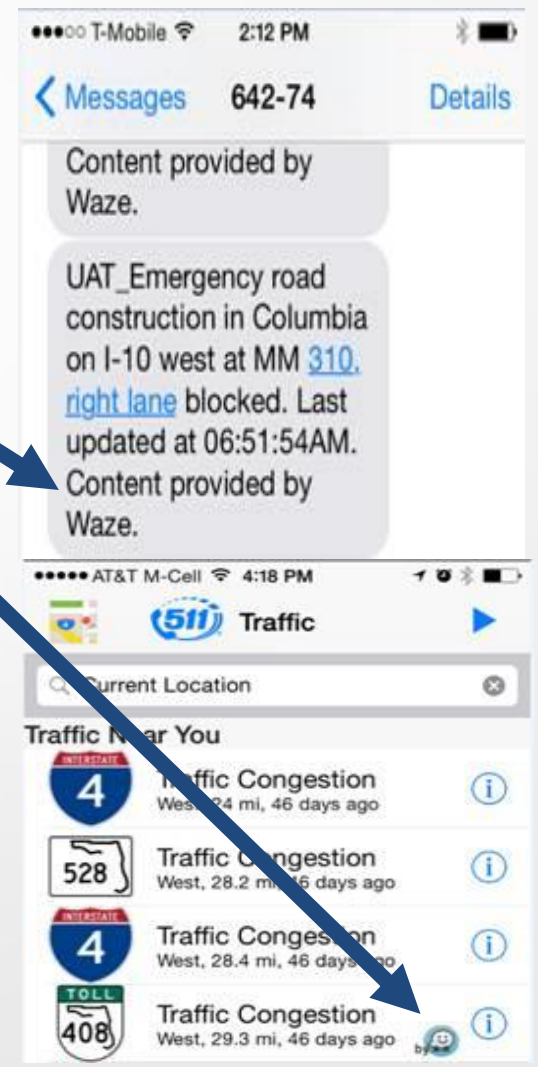
- Phase 2 Goal: Integrate Waze incidents into IDS for operator efficiency
- Waze Phase 2 ConOps presentation presented to CMB on 1/26
- Waze Phase 2 ConOps document distributed for review on 1/30
- Comments addressed and document updated
- Presenting modifications and proposing for CMB approval today



# Comments → Clarifications



- FL-ATIS attribution: “Content provided by Waze”
- Set unconfirmed events on instrumented roadways to False Alarm if unable to confirm
- Waze (or any) incident updates never close a SunGuide event
- For operators – same responsibility, less manual work (see next slide)
- Non-Instrumented State Roads: Post Floodgate for complete closures only





# Improved WazeReader and Filtering



Brian Ritchson, Atkins / FDOT

- Remote C2C Events replaced with FHP CAD style IDS Interface
- Filtering on reliability (1-10) replaces previous User Rating filter
  - Removing user rating filter will result in higher volume of alerts
  - Accident alerts will have no reliability filter
  - Hazard on Shoulder Car Stopped alerts with a reliability of 7 or less will be filtered out
  - All other alerts with a reliability of 5 or less will be filtered out
- Existing filters not changed
  - Alerts with irrelevant types will be filtered out  
i.e. Police, Jam, Chit Chat, Misc, most Weather subtypes except Fog
  - Locations 30 meters away from state roads



# Operation and Automation



- *What SunGuide operators WON'T have to do!*
  - Monitor the operator map for new Waze events
  - Determine if the Waze event is a duplicate
  - Determine if the Waze event is on a US or state road
  - Create an event from scratch (either from the map or from the Add Event button)
  - Update the event information with the Waze alert information
  - Monitor the C2C event details dialog for a status change
  - Ignore Waze C2C events icons already processed
  - Provide attribution to Waze events on an event by event basis



# Schedule and Cost



- Part of Release 6.2
- Cost: \$41,700



# QUESTIONS?

*(VOTE)*

Derek Vollmer, P.E., FDOT

[Derek.Vollmer@dot.state.fl.us](mailto:Derek.Vollmer@dot.state.fl.us)

Clay Packard, P.E., Atkins/FDOT

[Clay.Packard@dot.state.fl.us](mailto:Clay.Packard@dot.state.fl.us)



# Wrong Way Driving

Clay Packard, P.E., Atkins/FDOT



# Overview



- Goal: Integrate Wrong Way Driving (WWD) Detection incidents into IDS for system performance
- WWD Full ConOps presentation presented to CMB on 01/27/2015
- WWD partial implementation hotfix provided 1/9
  - Included Wavetronix, operator pop-up, and preconfigured emails.
- WWD Standard Operating Guidelines document finalized on 3/26/2015
- ConOps comments addressed and document updated
- Presenting modifications and proposing for CMB approval today





# Clarifications and Changes



- Device support is not limited by Concept of Operation
  - Additional devices are under evaluation (TAPCO sign)
    - Please let us know of more you are interested in having supported
- Automation is Configurable
  - Allows for testing, simulating, and evaluating false positives before automating
- Video on Desktop Window containing alert and video
- Directionality for DMS inclusion is configurable and selectable
- Messages will be posted at priority 1

# Directionality

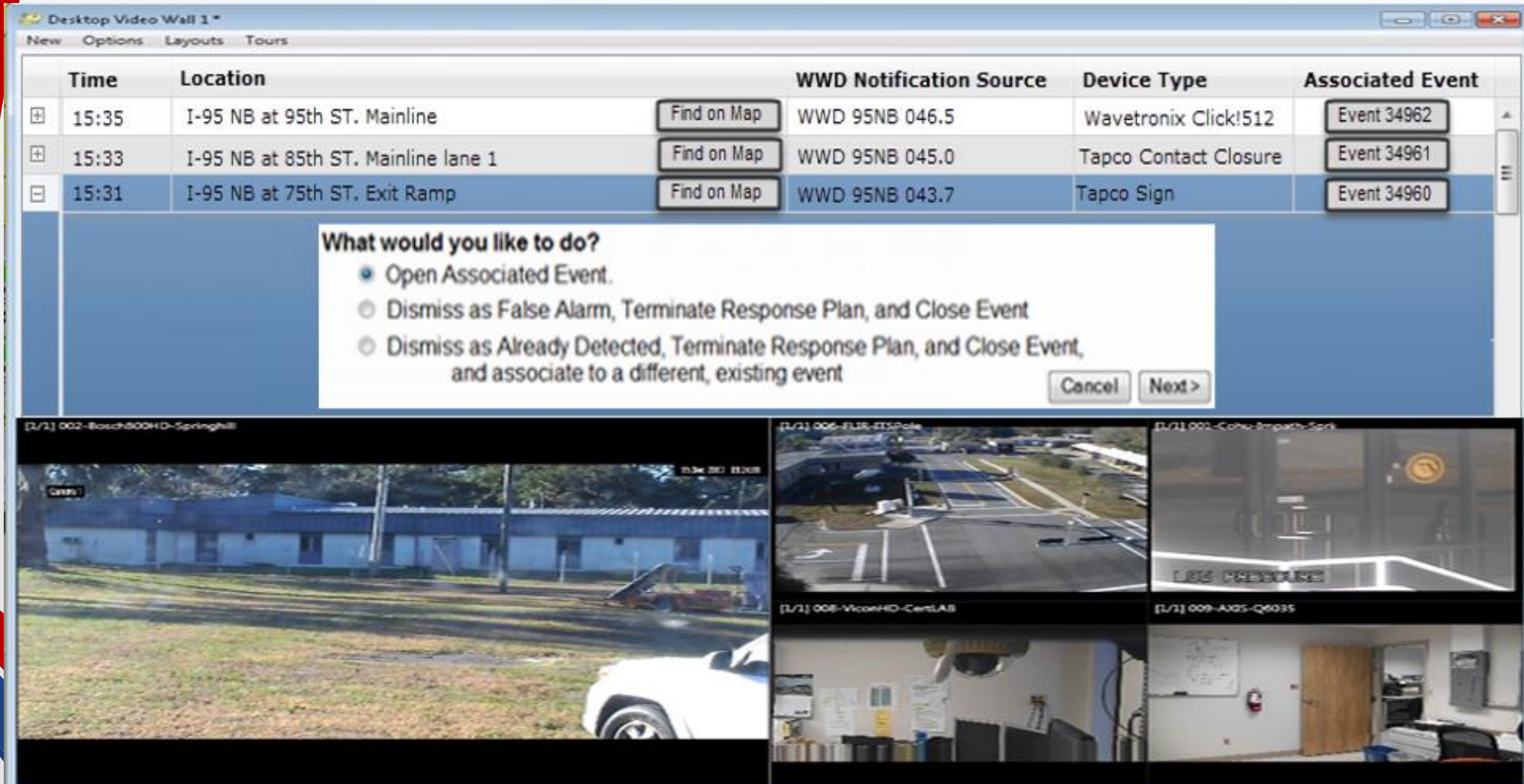
- Notification Scenarios – how to handle direction for operator created events
  - Motorist Phone Call - low confidence in direction provided
  - WWD Detection Device external to SunGuide - accurate direction provided to operator
  - IDS WWD Detection Device while system is not configured for automatic activation
    - accurate direction provided to event
- Operator will confirm location and select directions for DMS inclusion
  - Prior to generating response plan suggestion for non-automated activations and revisions
  - Specific design on how operator will confirm the location and which direction to be fleshed out in design review with stakeholders

# Create WWD Event from Map Shortcut

- Scenario: Notification to Operator (not IDS device)
- Existing Option 1: “Create New Event” as usual
  - Operator right clicks map at location, “Create Event”, generate response plan, activate
- New Option 2: Shortcut for automation
  - Right click the map at the location
  - Use new context menu item: “Create new WWD event with activated response plan”
  - Operator confirms location and directionality of DMS inclusion in response plan
  - If not configured to be automated, menu item will not be available

# Operator Popup with Alert and Video

- Only the alert handling expansion disappears when ownership is taken



The screenshot shows a software window titled "Desktop Video Wall 1\*" with a menu bar containing "New", "Options", "Layouts", and "Tours". Below the menu is a table with the following data:

| Time  | Location                            | WWD Notification Source | Device Type           | Associated Event |
|-------|-------------------------------------|-------------------------|-----------------------|------------------|
| 15:35 | I-95 NB at 95th ST. Mainline        | WWD 95NB 046.5          | Wavetronix Click!512  | Event 34962      |
| 15:33 | I-95 NB at 85th ST. Mainline lane 1 | WWD 95NB 045.0          | Tapco Contact Closure | Event 34961      |
| 15:31 | I-95 NB at 75th ST. Exit Ramp       | WWD 95NB 043.7          | Tapco Sign            | Event 34960      |

Each row in the table has a "Find on Map" button. A modal dialog box is overlaid on the table with the following content:

**What would you like to do?**

- Open Associated Event.
- Dismiss as False Alarm, Terminate Response Plan, and Close Event
- Dismiss as Already Detected, Terminate Response Plan, and Close Event, and associate to a different, existing event

Buttons for "Cancel" and "Next >" are at the bottom right of the dialog.

Below the dialog is a video wall grid with six panels:

- Top-left: [L/1] 002-Bosch900HD-Springhill (shows a blue building)
- Top-middle: [L/1] 006-FLIR-RTSPole (shows an aerial view of a road)
- Top-right: [L/1] 001-Cohu-Impath-Soft (shows a close-up of a sign)
- Bottom-left: [L/1] 008-ViconHD-CentLAS (shows a white car)
- Bottom-middle: [L/1] 009-Axis-Q6035 (shows an interior room)
- Bottom-right: [L/1] 009-Axis-Q6035 (shows another interior room)



# Future Considerations



- Connected Vehicle Traveler Advisory Messages
- Ramp Meter Shutoff
- Communication Standard for WWD Detection Devices
- Auto-Dismiss redundant upstream alerts (similar to TSS alarms)
- Format email messages destined for SMS devices



# Schedule and Cost



- Part of Release 6.2
- Cost: \$70,300



# QUESTIONS?

*(VOTE)*

Derek Vollmer, P.E., FDOT

[Derek.Vollmer@dot.state.fl.us](mailto:Derek.Vollmer@dot.state.fl.us)

Clay Packard, P.E., Atkins/FDOT

[Clay.Packard@dot.state.fl.us](mailto:Clay.Packard@dot.state.fl.us)



# Break – 10 min

<http://ipadstopwatch.com/timer.html>





# SSUG Small Enhancements *(with vote)*

Clay Packard, P.E., Atkins/FDOT



# Overview



- Districts prioritized their Footprint (FP) enhancement requests
  - D2 and D6 were major proponents
- Several are minor, helpful, and inexpensive
- Several make sense to do when migrating the GUIs to WPF
- These enhancements are being presented to SSUG on 4/27

# FP 448: Add Sort Order to Roadway

Select  
apostrophe's test  
Barnstable Drive  
**I-10**  
Nash Road  
PsuedoExpress for IV&V 4.3  
Royal palm Way  
Southwood Dr  
Springhill Road  
SR-27  
testtest11  
US-19  
US-27  
US-319

Expands to unsorted  
Roadway List

EM Event# 1929 - Internet Explorer

**Event # 1929**

**Administrative Details**

Operator: lbijelic  
Date/Time Added: 4/22/2013 7:54  
Status: Active Terminate  
Status Last Updated: 4/22/2013 8:06

**Contacts**  
There are currently no contacts.

**Impact on Roadways**

**Event Location / Congestion**  
Leon on I-10 Eastbound, 10000 ft Before Gadsden County Line

**Event Location**

County: Leon Distance From Exit (ft): 10000

Road: I-10

Direction: Eastbound

Reference Point: MM 194

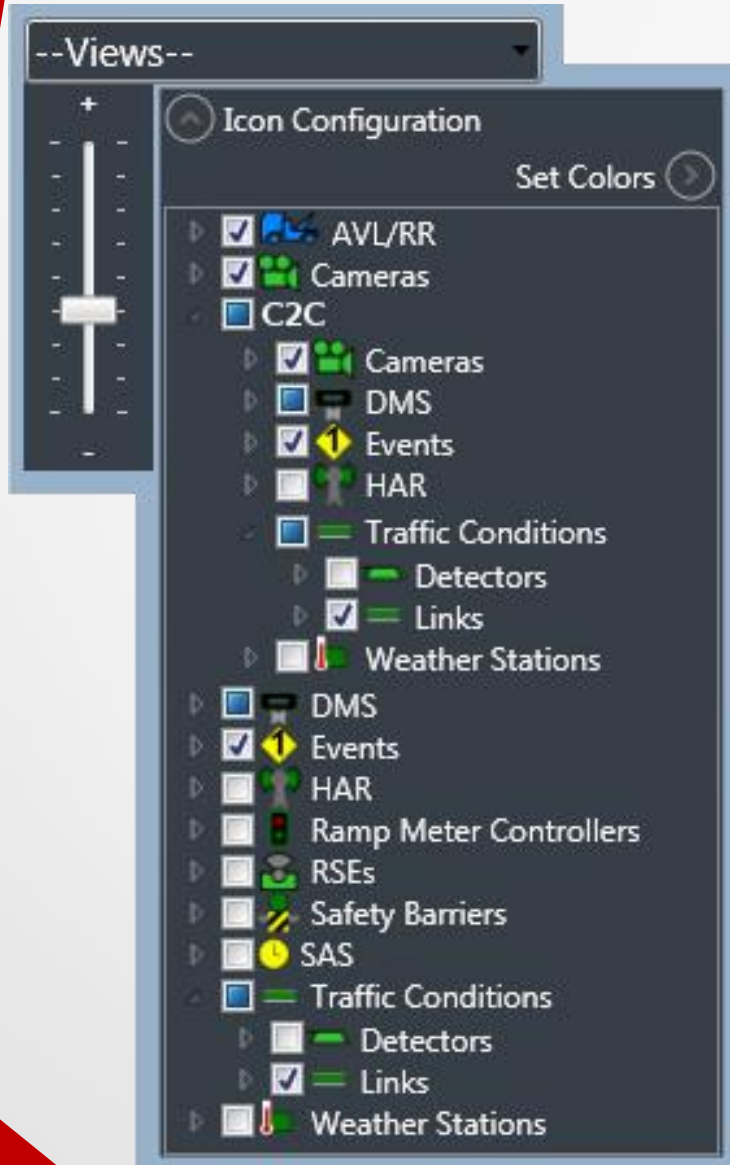
Relationship To Exit: before: Gadsden County Line

Congestion

|   |   |   |   |   |
|---|---|---|---|---|
| 0 | 0 | 0 | 0 | 0 |
| 1 | 1 | 1 | 1 | 1 |
| 2 | 2 | 2 | 2 | 2 |
| 3 | 3 | 3 | 3 | 3 |
| 4 | 4 | 4 | 4 | 4 |
| 5 | 5 | 5 | 5 | 5 |
| 6 | 6 | 6 | 6 | 6 |
| 7 | 7 | 7 | 7 | 7 |
| 8 | 8 | 8 | 8 | 8 |
| 9 | 9 | 9 | 9 | 9 |

Mile Marker:

- All other EM Location objects have sort order
- Roadway needs it
  - Consistency
  - Put most used roads at top (or whatever order is most helpful to TMC operators)
  - Used most often in EM Dialog



## FP 2587: Independent Toggle for Local/C2C link display

- Issue: No way to turn off local TSS links and leave remote TSS links on the map
- Solution: Add a remote C2C section with all C2C icon types

# FP 2570: Add comments to closed events via audit

- New Audit section for adding comments
- Does not modify: event last updated timestamp
- Record will appear as an AUDIT record with an audit trail (you can't modify an event without the event being active)



# FP 2656 – Ignore spaces in EM Tag Lookup

- Used for tracking “repeat customers” of amber alerts, out of gas, etc. as just an FYI to operators/responders
- Tags are not issued that are only different because of spaces
- Sometimes operators may enter spaces, sometimes not
- Tags will be matched while ignoring spaces in the tag



# FP 2073: Generate TSS-like alerts from C2C data sources



- Enable / Disable per C2C network name
- Re-use speed limit % thresholds (global)
- Distinguish Alert from C2C network name and link name

C2C Network Selection

Select below which remote data items should be displayed on your map.

| Center                    | Traffic Conditions                  | Enable C2C TSS Alerts               |
|---------------------------|-------------------------------------|-------------------------------------|
| BlueTOAD                  | <input type="checkbox"/>            | <input type="checkbox"/>            |
| District 9 Inrix          | <input type="checkbox"/>            | <input type="checkbox"/>            |
| District 9 Nokia          | <input type="checkbox"/>            | <input type="checkbox"/>            |
| [Default for new centers] | <input checked="" type="checkbox"/> | <input checked="" type="checkbox"/> |

Revert Save

SunGuide Operator Map System Settings

Events DMS C2C CCTV

75 Recovery Threshold / Percent of speed limit below which to consider C2C links near congested (typically colored yellow).

50 Alarm Threshold / Percent of speed limit below which to consider C2C links congested (typically colored red).

Revert Save

| Alert  | Time ▼                   |
|--|--------------------------|
| Incident detected by TSS link RTMS-01-link1: Speed                                 | 0 min ago<br>Find On Map |
| Incident detected by C2C TSS link (District 9 Nokia): I-10 EB near Biscayne: Speed | 2 min ago<br>Find On Map |



# FP 2073: Generate TSS-like alerts from C2C data sources



- Enable / Disable per C2C network name
- Re-use speed limit % thresholds (global)
- Distinguish Alert from C2C network name and link name

SunGuide Operator Map System Settings

Events DMS C2C CCTV

75 Recovery Threshold / Percent of speed limit below which to consider C2C links near congested (typically colored yellow).

50 Alarm Threshold / Percent of speed limit below which to consider C2C links congested (typically colored red).

| Center                    | Enable C2C TSS Alerts               |
|---------------------------|-------------------------------------|
| BlueTOAD                  | <input type="checkbox"/>            |
| District 9 Inrix          | <input type="checkbox"/>            |
| District 9 Nokia          | <input type="checkbox"/>            |
| [Default for new centers] | <input checked="" type="checkbox"/> |

Revert Save

| Alert  | Time ▼                   |
|--|--------------------------|
| Incident detected by TSS link RTMS-01-link1: Speed                                 | 0 min ago<br>Find On Map |
| Incident detected by C2C TSS link (District 9 Nokia): I-10 EB near Biscayne: Speed | 2 min ago<br>Find On Map |

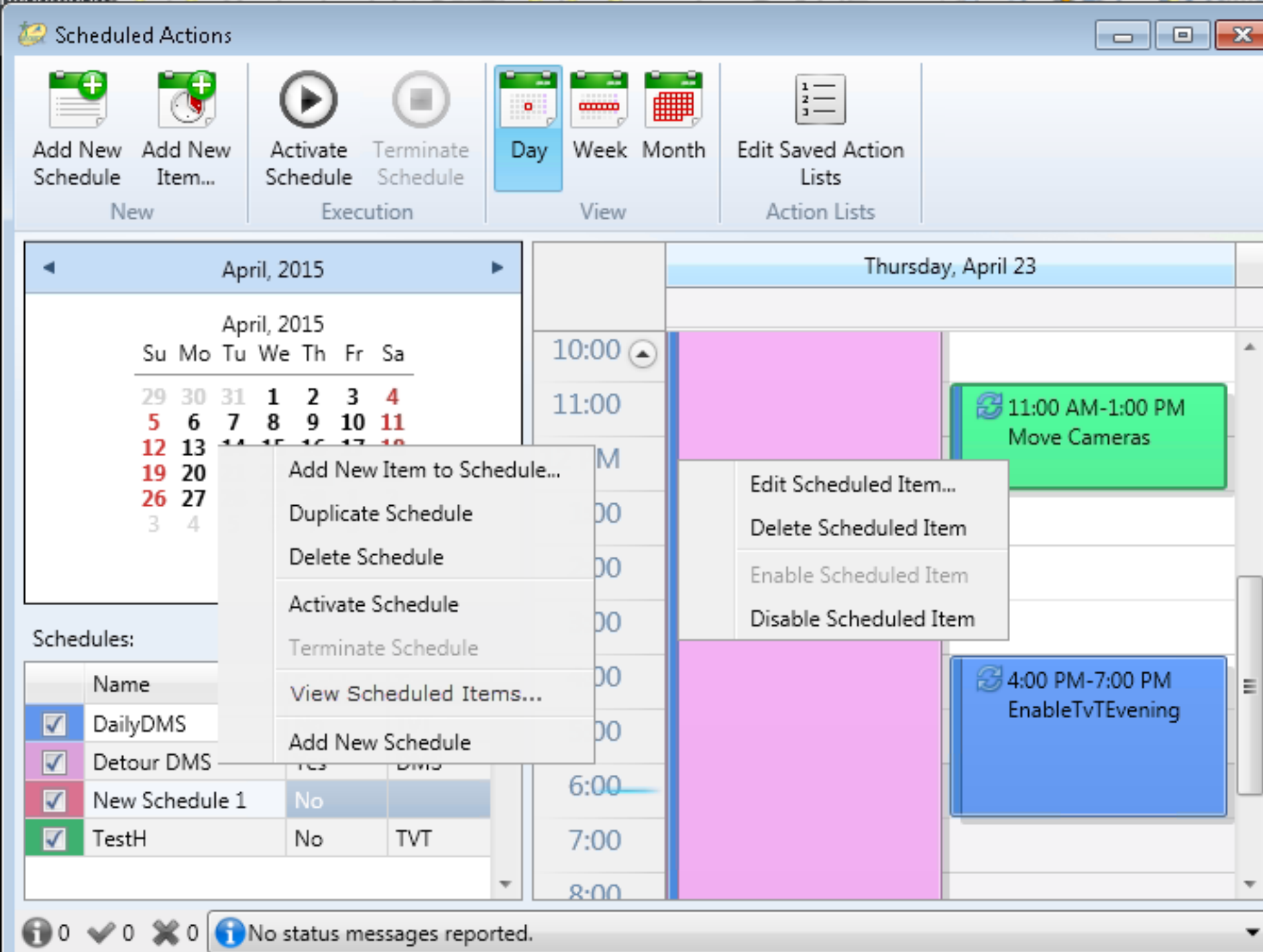


# Footprint 2629:

## View Scheduled Items from a Schedule

- Hassle to find all items in a schedule
- Add “View Scheduled Items...” context menu item
- Opens Dialog containing scheduled items
  - Title of Dialog: “Schedule X: Scheduled Items”
  - Content = List view with Item information in columns
  - Context menu for each item same as from calendar view

# View Scheduled Items Context Menus



**Scheduled Actions**

Add New Schedule    Add New Item...    Activate Schedule    Terminate Schedule    Day    Week    Month    Edit Saved Action Lists

New    Execution    View    Action Lists

April, 2015    Thursday, April 23

10:00    11:00 AM-1:00 PM Move Cameras  
 11:00    4:00 PM-7:00 PM EnableTvTEvening

Add New Item to Schedule...  
 Duplicate Schedule  
 Delete Schedule  
 Activate Schedule  
 Terminate Schedule  
 View Scheduled Items...  
 Add New Schedule

Edit Scheduled Item...  
 Delete Scheduled Item  
 Enable Scheduled Item  
 Disable Scheduled Item

**Schedules:**

| Name   | Yes | No | DMS | TVT |
|--|-----|----|-----|-----|
| <input checked="" type="checkbox"/> DailyDMS       |     |    |     |     |
| <input checked="" type="checkbox"/> Detour DMS     |     |    |     |     |
| <input checked="" type="checkbox"/> New Schedule 1 | No  |    |     |     |
| <input checked="" type="checkbox"/> TestH          | No  |    |     | TVT |

0    0    0    No status messages reported.

SunGuide - Event List - Internet Explorer

**Error from DMS: TERL-TOLL-Sim5.Abandoning DMS message, max attempts reached: Request timed out without response from DMS subsystem.** **Middleware failure on express lane I-10 EB: Unable to connect to Middleware**

**Event List | CCTV | AVL/RR | VSL | Express Lanes | Reports | Audit** 15:47:50

Event ID Filter Open Panel on Startup Save Preferences Printable List Add Event

| ID  | Event   | Primary Vehicle                | Event Type          | Blockage  | RR | Org      | Operator     | Date Added       | Date Last Updated |   |
|---|---|--------------------------------|---------------------|---|----|----------|--------------|------------------|-------------------|---|
| <b>Active Events with Travel Lane Blockage</b>    |   |                                |                     |   |    |          |              |                  |                   |   |
| 1929  | Leon on I-10 Eastbound, 10000 ft Before Gadsden County Line       | Brown                          | PSA                 | 1 Right Lane (of 2 Lanes) Blocked                           |    | TERL TMC | Ibijelic     | 04/22/2013 07:54 | 04/22/2013 11:54  | Response Plan<br>Nearest Camera<br>Find On Map<br>Audit |
| 1932  | Leon on I-10 Westbound, At MM 194                                 |                                | Scheduled Road Work | 1 Center Lane (of 2 Lanes) Blocked., Right Shoulder Blocked |    | TERL TMC | britchson    | 07/05/2013 14:00 | 11/01/2013 15:20  | Response Plan<br>Nearest Camera<br>Find On Map<br>Audit |
| 1933  | Leon on I-10 Westbound, At MM 194                                 |                                | Scheduled Road Work | 1 Center Lane (of 2 Lanes) Blocked.                         |    | TERL TMC | britchson    | 07/05/2013 14:37 | 08/08/2013 11:27  | Response Plan<br>Nearest Camera<br>Find On Map<br>Audit |
| 1944  | Hamilton on Nash Road Eastbound, At SR-528 at International Drive |                                | Abandoned Vehicle   | Closed.   |    | TERL TMC | opackard     | 11/07/2013 13:30 | 11/07/2013 14:06  | Response Plan<br>Nearest Camera<br>Find On Map<br>Audit |
| 1946  | Leon Long Name on I-10 Eastbound, Before Gadsden County Line      |                                | Crash               | Closed.   |    | TERL TMC | vjohnson     | 12/05/2013 13:47 | 12/05/2013 13:49  | Response Plan<br>Nearest Camera<br>Find On Map<br>Audit |
| 1947  | Leon Long Name on I-10 Eastbound, Before Gadsden County Line      |                                | Crash               | Closed.   |    | TERL TMC | vjohnson     | 12/19/2013 09:22 | 12/19/2013 09:23  | Response Plan<br>Nearest Camera<br>Find On Map<br>Audit |
| 1983  | Leon on I-10 Eastbound, Beyond MM 204                             |                                | Crash               | 2 Left Lanes (of 3 Lanes) Blocked                           |    | TERL TMC | dvollmer     | 10/30/2014 10:26 | 11/24/2014 09:48  | Response Plan<br>Nearest Camera<br>Find On Map<br>Audit |
| <b>Active Events without Travel Lane Blockage</b> |   |                                |                     |   |    |          |              |                  |                   |   |
| 1874  | Leon on I-10 Eastbound, Beyond MM 197                             |                                | Crash               | No lanes blocked.   |    | TERL TMC | britchson    | 02/08/2012 11:53 | 09/07/2012 09:57  | Response Plan<br>Nearest Camera<br>Find On Map<br>Audit |
| 1876  | Leon on I-10 Eastbound, At Rest Area (MM 194)                     |                                | Crash               | Left Shoulder Blocked, Right Shoulder Blocked               |    | TERL TMC | britchson    | 02/15/2012 15:14 | 09/20/2013 17:05  | Response Plan<br>Nearest Camera<br>Find On Map<br>Audit |
| 1877  | Leon on Springhill Road Southbound, Beyond TERL SB                | Brown ACURA MDX TAG# FL-TAG123 | Abandoned Vehicle   | No lanes blocked.   |    | TERL TMC | avlrrssystem | 02/17/2012 14:14 | 02/17/2012 14:18  | Response Plan<br>Nearest Camera<br>Find On Map<br>Audit |
| 1878  | Leon on I-10 Eastbound, At SR-283 (Capital Cir) Exit 196          |                                | Crash               | No lanes blocked.   |    | TERL TMC | arunk        | 03/26/2012 09:58 | 03/26/2012 10:05  | Response Plan<br>Nearest Camera<br>Find On Map<br>Audit |

**Alert**

Error from DMS: TERL-TOLL-Sim5.Abandoning DMS message, max attempts reached: Request timed out without response from DMS subsystem. 130

Middleware failure on express lane I-10 EB: Unable to connect to Middleware. 70

Error from DMS: 61.Abandoning DMS message, max attempts reached: Device has been placed out. 23

Error from DMS: 60.Abandoning DMS message, max attempts reached: Device has been placed out. 21

Error from DMS: 59.Abandoning DMS message, max attempts reached: Device has been placed out. 21

Error from DMS: 58.Abandoning DMS message, max attempts reached: Device has been placed out. 21

Error from DMS: 73.Abandoning DMS message, max attempts reached: Device has been placed out. 21

AVL/RR Alerts

VSL Updates

Express Lane Alerts

Weather Alerts

External Incidents

FHP Incidents

Citilog Alarms

TSS Alarms

Safety Barrier Alerts

Show all Show none

Group alerts by category



# FP 1910: Highlight events owned by operator

- Alternating yellow colors (or more aesthetic colors during design phase :)

## FP 2418: Deletion of TSS links used by TVT

- In Edit TSS Link Configuration:

Prevent deletion of local TSS links if used by TVT (or VSL or other configuration usages for that matter) and inform the user where the links are referenced with an error message.

## FP 2989: Stale Remote/C2C TSS Links Gray on Map

- Operator map should show stale C2C TSS links as grey
- Stale C2C links are links included in C2C network data without an update within a configurable amount of time
- Single, global C2C Settings variable, defaulting to 10 minutes
- GUI will implement with a timer
  - Will check all links for staleness at a frequency that is the same as the global variable
  - Will check at an interval using the same configuration variable
  - Will set the status of the C2C link to “no data”, (which appears grey by default)



# FP 2223: Add Year Field to Involved Vehicle and to Response Plan

- Originally CMB said this was not needed, but FHP template was provided requiring it.
- District 3 – City of Tallahassee has to manually edit vehicle alert response plan messages to add year
- SSUG Input – do we want to recommend this be included? As optional field?

▼ **Vehicles Involved**      Brown, Blue BMW 330XI TAG# CT-abc123

| Color                              | Make                               | Model                              | Year                              | Tag                  | State                              | Match |   |
|------------------------------------|------------------------------------|------------------------------------|-----------------------------------|----------------------|------------------------------------|-------|---|
| Brown                              | N/A                                | N/A                                |                                   |                      | N/A                                |       | <input type="button" value="Modify"/> <input type="button" value="Delete"/> |
| Blue                               | BMW                                | 330XI                              | 2005                              | abc123               | CT                                 |       | <input type="button" value="Modify"/> <input type="button" value="Delete"/> |
| <input type="text" value="N/A"/> ▼ | <input type="text" value="N/A"/> ▼ | <input type="text" value="N/A"/> ▼ | <input type="text" value="2010"/> | <input type="text"/> | <input type="text" value="N/A"/> ▼ |       | <input type="button" value="Add"/>  |



**STATE OF FLORIDA**  
**SILVER ALERT (Dynamic Message Systems)**



**FROM:** FLORIDA DEPARTMENT OF LAW ENFORCEMENT, TALLAHASSEE

**SENT BY:** VICKIE JOHNSON

**SILVER ALERT NAME:** Alfred Monte

**TO: ORLANDO RTMC**    **Area(s) for primary activation:** 1, 4, 5, 6, 7, Turnpike  
**Area(s) for secondary activation: Remaining districts**

**FAX NUMBER:** (FHP) 407-737-2217 (DOT) 407-736-1918    **DATE:** 3/30/2015

**URGENT**                      **URGENT**                      **URGENT**                      **URGENT**                      **URGENT**

**REQUIRED MESSAGE**

|  |  |   |   |   |   |   |   |  |   |   |   |   |   |  |  |
|--|--|---|---|---|---|---|---|--|---|---|---|---|---|--|--|
|  |  | S | I | L | V | E | R |  | A | L | E | R | T |  |  |
|  |  |   |   |   |   |   |   |  |   |   |   |   |   |  |  |
|  |  |   | C | A | L | L |   |  | * | 3 | 4 | 7 |   |  |  |

|   |   |   |   |   |   |   |   |   |   |   |   |   |   |   |  |
|---|---|---|---|---|---|---|---|---|---|---|---|---|---|---|--|
| P | U | R | P | L | E |   | 2 | 0 | 0 | 9 |   |   |   |   |  |
| H | Y | U | N | D | A | I |   | E | L | A | N | T | R | A |  |
| F | L |   | T | A | G |   | 8 | 8 | 6 | L | I | I |   |   |  |



# FP 1734: Use FHP CAD direction to filter locations

Event Location / Congestion: Leon on I-10 Eastbound, 10000 ft Before Gadsden County Line

**Event Location**

County: Leon

Road: I-10

Direction: Eastbound

Reference Point: MM 194

Relationship To Exit: before: Gadsden County Line

Distance From Exit (ft): 10000

|   |   |   |   |   |
|---|---|---|---|---|
| 0 | 0 | 0 | 0 | 0 |
| 1 | 1 | 1 | 1 | 1 |
| 2 | 2 | 2 | 2 | 2 |
| 3 | 3 | 3 | 3 | 3 |
| 4 | 4 | 4 | 4 | 4 |
| 5 | 5 | 5 | 5 | 5 |
| 6 | 6 | 6 | 6 | 6 |
| 7 | 7 | 7 | 7 | 7 |
| 8 | 8 | 8 | 8 | 8 |
| 9 | 9 | 9 | 9 | 9 |

Mile Marker:

- When changing direction,
  - Issue: Ref pt & offset are unselected a pain to hunt through a long list
  - Solution: ref pt & offset will be autoselected to closest lat/long of previous selected location (does not have to be saved)
- Not specific to event type
- All locations & offsets need distinct lat/long



## FP 1734: Use FHP CAD direction to filter locations

- I have discussed this over the last couple of years with SwRI, FHP, and others.
- Originally, the ideal solution would have been for FHP CAD to have a separate direction field. However, we have been unsuccessful in getting that change made to the feed.
- Currently, SunGuide does its best to identify the correct direction if it is in the location text; but this is not 100%.
- I believe I have heard that the most painful impact is to the operator because when you choose a different direction (or choose a different county or roadway for that matter), the reference point and offset (or whatever the lesser significant fields are) all reset to unselected values, causing the operator to have to search through the list to find each one when the location may have been right on – just in the wrong direction.
- What I will propose as the next step to mitigate this impact is when the direction (or any location field) is changed, to have SunGuide automatically select the remaining values for these lesser significant fields which are the closest to the prior selected location. For example, if you create an event from an FHP CAD alert, change the direction, then the software will set the ref. pt. and offset to the new location having the newly selected direction and that is the closest to the prior location. I will present this to SSUG for comment and if we all concur, I will present this to the CMB along with several other small enhancements.
- Feel free to chime in, but if this would help, let's give it a try and see how well it helps out since it is the most cost-feasible solution we have come up to further improve this situation.



# Schedule and Cost



- Release 6.2 and 7.0
- Cost: \$108,000



# QUESTIONS?

*(VOTE)*

Derek Vollmer, P.E., FDOT

[Derek.Vollmer@dot.state.fl.us](mailto:Derek.Vollmer@dot.state.fl.us)

Clay Packard, P.E., Atkins/FDOT

[Clay.Packard@dot.state.fl.us](mailto:Clay.Packard@dot.state.fl.us)



# Statewide ITS Architecture Update

Derek Vollmer, P.E., FDOT



# ITS Architecture Updates



- District 1 and 7 ITS Architecture updates were completed 01/09/2015
- District 5 and Turnpike ITS Architecture were completed 04/08/2015
- Remaining Districts ITS Architecture updates will be completed by 12/31/2015
- Statewide, Districts 2 & 3 Updates Started 04/15/2015 and End 08/27/2015
- Districts 4 & 6 Updates Start 08/09/2015 and End 11/28/2015



# ITS Architecture Events



- Project Kickoff Meeting – 09/05/2014
- Eight Architecture Kickoff Meetings (Only 1 & 6 Remain)
- Stakeholder Interviews (1, 5, 7 & FTE Completed)
- Stakeholder Workshops (1, 5, 7 & FTE Completed)
- Final Architecture Meeting



# QUESTIONS?

Derek Vollmer, P.E., FDOT

[Derek.Vollmer@dot.state.fl.us](mailto:Derek.Vollmer@dot.state.fl.us)



# Auto-Dismiss Already Detected Alerts Upstream (FP 2845) *(with vote)*

Clay Packard, P.E., Atkins/FDOT





# Summary



- Original concept approved at CMB 10/17/2015
  - Upstream only concept modification requested
- Upstream only concept modification presented at CMB 1/27/2015
  - No cost / No schedule for modification (\$28,500 / after 6.1)
  - Corner Case: Secondary Incident in Queue raised
  - Vote postponed
- Secondary Incident in Queue presented here
  - Vote on Upstream only concept modification

- Secondary Incident happens inside queue of first incident
  - TSS Alarms would not catch this operationally
    - Operators are currently manually dismissing upstream alerts already
      - Thus, no change in ability to detect for better or worse
  - Operators are more closely monitoring the queue with the incident
    - Thus it is already being addressed operationally



# Budget/Schedule



- No change for “Upstream-Only” revision
- Original Cost: \$28,500
- Schedule : After Release 6.1



# QUESTIONS?

*(VOTE)*

Derek Vollmer, P.E., FDOT

[Derek.Vollmer@dot.state.fl.us](mailto:Derek.Vollmer@dot.state.fl.us)

Clay Packard, P.E., Atkins/FDOT

[Clay.Packard@dot.state.fl.us](mailto:Clay.Packard@dot.state.fl.us)



# Road Ranger GUI Improvements (FP 2661/3040) *(with vote)*

Mark Laird, AECOM/FDOT

| Add New Event  |             |
|--|-------------|
| Event Type:  | Crash       |
| Notifying Agency:  | Road Ranger |
| Notifying Contact:   | 605         |
| Status:  | Active      |
| <input type="button" value="Add Event"/> <input type="button" value="Cancel"/> |             |

When a RR is selected as the Notifying Contact in the Create New Event dialog and that RR's status is Patrolling:

- The RR status is changed to Arrived
- The notified and on-scene times are set
- The event shows that the RR is participating in that event

# RR as Notifier When Not Patrolling

RR's status is anything other than Patrolling:

- The status is not changed to Arrived
- The responders table shows the RR as Notified and On-Scene

| Notified by TMC          | Responders      | Notified   | On Scene   | Departed |
|--------------------------|-----------------|------------|------------|----------|
| <input type="checkbox"/> | Road Ranger ▶   | 4/21 12:04 | 4/21 12:04 |          |
| <input type="checkbox"/> | Express Lanes ▶ |            |            |          |
| <input type="checkbox"/> | FHP ▶           |            |            |          |
| <input type="checkbox"/> | Fire Rescue ▶   |            |            |          |

# RR as Notifier When Not Patrolling

- The Event Details form shows:
  - RR 605 status is END SHIFT
  - RR 605 dispatched (but not ARRIVED)
  - Event not associated
  - Permits assigning activities, even though not arrived
  - RR 605 not available to be dispatched (already dispatched to this event)

|                     |             |
|---------------------|-------------|
| Notifying Agency:   | Road Ranger |
| Notifier Contact:   | 605 605     |
| Vehicle(s) Dispatch | 605         |

| Vehicle | Status           | Status Time | Activity         | Dispatch Time | Arrival Time | Departure Time | Cancel Time |
|---------|------------------|-------------|------------------|---------------|--------------|----------------|-------------|
| 600     |                  |             |                  | Dispatch      |              |                |             |
| 601     |                  |             |                  |               |              |                |             |
| 602     | END SHIFT        | 4/21 12:05  | MOT non-specific | 4/21 12:04    | 4/21 12:04   | Depart         |             |
| 603     | ARRIVED          |             | Delete           |               |              |                |             |
| 604     |                  |             | MOT non-specific |               |              |                |             |
| 606     |                  |             |                  |               |              |                |             |
| 607     |                  |             |                  |               |              |                |             |
| 608     |                  |             |                  |               |              |                |             |
| 619     |                  |             |                  |               |              |                |             |
| 630     |                  |             |                  |               |              |                |             |
| 633     |                  |             |                  |               |              |                |             |
| 634     |                  |             |                  |               |              |                |             |
| 655     |                  |             |                  |               |              |                |             |
| 660     |                  |             |                  |               |              |                |             |
| 661     |                  |             |                  |               |              |                |             |
| 601     | BREAK (RESTROOM) |             |                  |               |              |                |             |
| 601     | PATROLLING       |             |                  |               |              |                |             |
| 602     | PATROLLING       |             |                  |               |              |                |             |
| 603     | PATROLLING       |             |                  |               |              |                |             |
| 604     | ARRIVED          | 411598      |                  |               |              |                |             |
| 604     |                  |             |                  |               |              |                |             |
| 605     | END SHIFT        |             |                  |               |              |                |             |

| Availability Status | Event Id | Beat | Driver           | Radio | Phone |
|---------------------|----------|------|------------------|-------|-------|
| BREAK (RESTROOM)    |          | 104  | Manuel Perez     |       |       |
| PATROLLING          |          | 8263 | Augusto Prieto   |       |       |
| PATROLLING          |          | 8264 | Michael Rainford |       |       |
| PATROLLING          |          | 954  | Romano Quant     |       |       |
| ARRIVED             | 411598   | 955  | Jorge Giralt     |       |       |
| END SHIFT           |          |      |                  |       |       |



# RR as Notifier When Not Patrolling

- The event history and chronology report show RR 605 as Notified and Arrived

| Date                | Category      | Details                           |
|---------------------|---------------|-----------------------------------|
| 04/21/2015 12:05:02 | ACTIVITY      | Road Ranger: 605 MOT non-specific |
| 04/21/2015 12:04:25 | ARRIVED       | Road Ranger: 605                  |
| 04/21/2015 12:04:25 | NOTIFIED      | Road Ranger: 605                  |
| 04/21/2015 12:04:25 | ATIS SEVERITY | minor                             |

| <b>Event #:</b> 411604                       | <b>Event Type:</b> Crash | <b>Report Date:</b> 04/21/2015 12:04:25              |
|--|--------------------------|--|
| <b>Status:</b> Active                        | <b>County:</b>           | <b>Organization:</b> FDOT D8 SunGuide TMC            |
| <b>Last Status Time:</b> 04/21/2015 12:04:25 | <b>Road:</b>             | <b>Notifier:</b> Road Ranger                         |
| <b>Duration (mnt):</b>                       | <b>Location:</b>         | <b>Agency:</b>                                       |
| <b>First Notified:</b> 04/21/2015 12:04:25   |                          | <b>Notifier:</b> 605, 605                            |
| <b>Confirmed:</b>                            |                          | <b>Contact:</b>                                      |
| <b>First Closed:</b>                         | <b>Rollover:</b> False   | <b>Conditions:</b> All Other, All Other (W), Unknown |
| <b>Secondary to:</b>                         | <b>Fire:</b> False       | <b>CCTV ID:</b>                                      |
| <b>FHP Incident Number:</b>                  | <b>HAZMAT:</b> False     | <b>CCTV Preset:</b>                                  |
| <b>Injury:</b>                               |                          |  |
| <b>Contacts:</b>                             |                          |  |
| <b>Involved Vehicles</b>                     |                          |  |
| Date   | Type                     | Description  |
| 04/21/2015 12:04:25                          | NOTIFIED                 | Road Ranger: 605                                     |
| 04/21/2015 12:04:25                          | EVENT TYPE               | Crash  |
| 04/21/2015 12:04:25                          | ATIS SEVERITY            | minor  |
| 04/21/2015 12:04:25                          | OWNER                    | lairdm   |
| 04/21/2015 12:04:25                          | STATUS                   | Active   |
| 04/21/2015 12:04:25                          | ARRIVED                  | Road Ranger: 605                                     |
| 04/21/2015 12:05:02                          | ACTIVITY                 | Road Ranger: 605 MOT non-specific                    |



# RR as Notifier When Not Patrolling



- The AVL/RR page shows:
  - Status = END SHIFT
  - No event associated
  - Change Vehicle State shows no Status when 605 is selected and the only options are START SHIFT and END SHIFT

| Vehicle | Status           | Beat      | Driver           | Radio      | Phone                  | Speed | Location | Event ID | Tracks | Violation? |
|---------|------------------|-----------|------------------|------------|------------------------|-------|----------|----------|--------|------------|
| 600     | BREAK (RESTROOM) | 104       | Manuel Perez     |            |                        |       |          |          | Hidden | No         |
| 601     | PATROLLING       | 8263      | Augusto Prieto   |            |                        |       |          |          | Hidden | No         |
| 602     | PATROLLING       | 8264      | Michael Rainford |            |                        |       |          |          | Hidden | No         |
| 603     | PATROLLING       | 954       | Romano Quant     |            |                        |       |          |          | Hidden | No         |
| 604     | ARRIVED          | 955       | Jorge Giralt     |            |                        |       |          | 411598   | Hidden | No         |
| 605     | END SHIFT        |           |                  |            |                        |       |          |          | Hidden | No         |
| 606     | PATROLLING       | 100       | Adrian Morales   | IRV 1      | RR# 608 (786) 566-8307 |       |          |          | Hidden | No         |
| 607     | PATROLLING       | Test Beat | Test Test        | Test Radio |                        |       |          |          | Hidden | No         |
| 608     | BASE             | 100       | Agustin Diaz     | RR #608    | RR#608 (786) 566-2935  |       |          |          | Hidden | No         |
| 609     | END SHIFT        |           |                  |            |                        |       |          |          | Hidden | No         |
| 610     | END SHIFT        |           |                  |            |                        |       |          |          | Hidden | No         |
| 611     | END SHIFT        |           |                  |            |                        |       |          |          | Hidden | No         |
| 612     | END SHIFT        |           |                  | RR #601    | RR#604 (786) 566-1630  |       |          |          | Hidden | No         |
| 613     | END SHIFT        |           |                  |            |                        |       |          |          | Hidden | No         |
| 614     | END SHIFT        |           |                  |            |                        |       |          |          | Hidden | No         |
| 615     | END SHIFT        |           |                  |            |                        |       |          |          | Hidden | No         |
| 616     | END SHIFT        |           |                  |            |                        |       |          |          | Hidden | No         |
| 617     | END SHIFT        |           |                  |            |                        |       |          |          | Hidden | No         |
| 618     | END SHIFT        |           |                  |            |                        |       |          |          | Hidden | No         |
| 619     | PATROLLING       | 82612     | Adrian Ortiz     |            |                        |       |          |          | Hidden | No         |
| 620     | END SHIFT        |           |                  |            |                        |       |          |          | Hidden | No         |
| 625     | END SHIFT        |           |                  |            |                        |       |          |          | Hidden | No         |
| 626     | END SHIFT        |           |                  |            |                        |       |          |          | Hidden | No         |
| 627     | END SHIFT        |           |                  |            |                        |       |          |          | Hidden | No         |
| 628     | END SHIFT        |           |                  |            |                        |       |          |          | Hidden | No         |

### Vehicle Details

#### Change Vehicle State

Status:

Driver:

Beat:

Radio:

Telephone:

#### General Settings

Number of Live Track Points for All Vehicles:



# RR as Notifier When Not Patrolling



- AVL/RR Vehicle Details shows:

|                           |             |
|---------------------------|-------------|
| <b>Vehicle ID:</b>        | 605         |
| <b>Vehicle Type:</b>      | Pickup      |
| <b>Vehicle Agency:</b>    | Road Ranger |
| <b>Speed:</b>             |             |
| <b>Heading:</b>           |             |
| <b>Location:</b>          |             |
| <b>Destination:</b>       |             |
| <b>Distance to Dest.:</b> |             |
| <b>Status:</b>            | END SHIFT   |



# RR as Notifier When Not Patrolling



- Details report shows 605 has an activity assigned

|  |                            |  |
|--|----------------------------|--|
| <b>Event #:</b> 411604                       | <b>Event Type:</b> Crash   | <b>Report Date:</b> 04/21/2015 12:04:25              |
| <b>Status:</b> Active                        | <b>County:</b>             | <b>Organization:</b> FDOT D6 SunGuide TMC            |
| <b>Last Status Time:</b> 04/21/2015 12:04:25 | <b>Road:</b>               |  |
| <b>Duration (min):</b>                       | <b>Direction:</b>          | <b>Contact:</b> 154                                  |
| <b>First Notified:</b> 04/21/2015 12:04:25   | <b>Location:</b>           | <b>Conditions:</b> All Other, All Other (W), Unknown |
| <b>Confirmed:</b>                            |                            |  |
| <b>First Closed:</b>                         | <b>Rollover:</b> False     |  |
| <b>Secondary to:</b>                         | <b>Fire:</b> False         |  |
| <b>FHP Incident Number:</b>                  | <b>HAZMAT:</b> False       |  |
| <b>Contacts:</b>                             |                            |  |
| <b>Involved Vehicles:</b>                    |                            |  |
| <b>Vehicles Involved</b>                     |                            |  |
| <b>Vehicle Count:</b> 0                      |                            |  |
| <b>Involved Vehicles:</b>                    |                            |  |
| <b>Road Ranger</b>                           |                            |  |
| <b>Time</b>                                  | <b>Road Ranger Vehicle</b> | <b>Activity</b>                                      |
| 04/21/2015 12:05:02                          | 605                        | MOT non-specific                                     |
| <b>Agency Response</b>                       |                            |  |
| <b>Agency</b>                                | <b>Response (min)</b>      | <b>Duration (min)</b>                                |
| Road Ranger                                  | 0                          |  |
| <b>Lane Blockage(s)</b>                      |                            |  |



# Handling Notifying RR Unable to Respond/Delayed Arrival



- A Road Ranger may report an event, but be unable to respond, e.g.
  - Has a mechanical problem and is going to get it fixed
  - Is on the way to a higher priority event
- A Road Ranger may report an event and be able to respond, but will not be on-scene for several minutes
  - Traveling in the wrong direction with not immediate opportunity to reverse direction
  - Affects performance metrics

# RR as Notifier Proposal

- SunGuide will no longer do anything completely automatically.
- In the “New Event” dialog, if an agency is selected for which IS\_ROADRANGER or IS\_SIRV is true, additional options will be provided to indicate the dispatching actions to take, if any
- The options will be:
  - NO ACTION - Do not notify this RR/SIRV, do not arrive this RR, do not show agency notified or on-scene, do not associate event in AVL/RR.
  - NOTIFY - Notify this RR/SIRV and show agency as notified and not on-scene, associate event in AVL/RR.
  - NOTIFY AND ARRIVE - Show this RR/SIRV as notified and arrived, show agency as notified and on-scene, associate event in AVL/RR.
- Ensure consistency of all event and AVLRR data
- Does not affect external RR apps (i.e. SPARR, Locate, or RRMA)



# Road Ranger List Sorting (FP2661)



Filter and sort trucks in the Create New Event “Notified by” list and Event Details Vehicle(s) Dispatch drop-down list.

- Filter to show only “CAN\_BE\_DISPATCHED” trucks
- Sort :
  - Trucks with status attribute “Default\_Patrolling” = 1 first
  - Trucks with Classification = “Busy” after “In Service”
  - Trucks with status attribute “Assisting” = 1 to last in Busy group
  - By Truck Name within each group
- Separate groups
  - Ideally, use headings similar to the Event List. Suggested headings:
    - PATROLLING
    - IN SERVICE
    - BUSY
  - A different background or text color for each group would help when seeing only part of the list

# RR Statuses (D6 choices)

1. Show only  
CAN\_BE\_DISPATCHED

2. DEFAULT\_PATROLLING  
first

| REF ID            | NAME             | CLASSIFICATION | IN_SERVICE | ASSISTING | CAN_BE_DISPATCHED | IS_BILLABLE | DEFAULT_ASSISTING | DEFAULT_PATROLLING | DEFAULT_START_SHIFT | DEFAULT_END_SHIFT |
|-------------------|------------------|----------------|------------|-----------|-------------------|-------------|-------------------|--------------------|---------------------|-------------------|
| <b>PATROLLING</b> |                  |                |            |           |                   |             |                   |                    |                     |                   |
| 1                 | PATROLLING       | InService      | 1          | 0         | 1                 | 1           | 0                 | 1                  | 0                   | 0                 |
| <b>IN SERVICE</b> |                  |                |            |           |                   |             |                   |                    |                     |                   |
| 15                | BASE             | InService      | 1          | 0         | 1                 | 1           | 0                 | 0                  | 0                   | 0                 |
| 9                 | BREAK            | InService      | 1          | 0         | 1                 | 1           | 0                 | 0                  | 0                   | 0                 |
| 11                | BREAK (RESTROOM) | InService      | 1          | 0         | 1                 | 1           | 0                 | 0                  | 0                   | 0                 |
| 16                | DEPARTED         | InService      | 1          | 0         | 1                 | 1           | 0                 | 0                  | 0                   | 0                 |
| 12                | FUEL             | InService      | 1          | 0         | 1                 | 1           | 0                 | 0                  | 0                   | 0                 |
| 7                 | INSPECTION       | InService      | 1          | 0         | 1                 | 1           | 0                 | 0                  | 0                   | 0                 |
| 4                 | MEAL             | InService      | 1          | 0         | 1                 | 1           | 0                 | 0                  | 0                   | 0                 |
| 17                | STAGING          | InService      | 1          | 0         | 1                 | 1           | 0                 | 0                  | 0                   | 0                 |
| 8                 | START SHIFT      | InService      | 1          | 0         | 1                 | 1           | 0                 | 0                  | 1                   | 0                 |
| <b>BUSY</b>       |                  |                |            |           |                   |             |                   |                    |                     |                   |
| 14                | MECHANICAL       | Busy           | 1          | 0         | 1                 | 1           | 0                 | 0                  | 0                   | 0                 |
| 5                 | SERVICE          | Busy           | 1          | 0         | 1                 | 1           | 0                 | 0                  | 0                   | 0                 |
| 2                 | ARRIVED          | Busy           | 1          | 1         | 1                 | 1           | 1                 | 0                  | 0                   | 0                 |

3. Busy below InService

4. Assisting last





# Budget/Schedule



- Cost: \$17,000
- Schedule: Release 6.2



# QUESTIONS? *(VOTE)*

Derek Vollmer, P.E., FDOT

[Derek.Vollmer@dot.state.fl.us](mailto:Derek.Vollmer@dot.state.fl.us)

Mark Laird, AECOM

[Mark.Laird@sunguide.info](mailto:Mark.Laird@sunguide.info)



# Open Discussion

Derek Vollmer, P.E., FDOT



# Review Action Items

Derek Vollmer, P.E., FDOT