



# Change Management Board Meeting

Monday, January 27, 2020

Audio: 1 (866) 692-3580,

Access Code: 595-410-435

**Do NOT Put On Hold Call is Being Recorded**

WebEx Link:

<https://aecom.webex.com/ccsgss/j.php?MTID=mbaec2b0796ecf3f80b732e46c00efba0>



# Welcome and Call for Quorum

John Hope, Assistant CMB Chairman



# Agenda



Time	Item	Lead
1:00 – 1:05	Welcome and Call for Quorum	John Hope
1:05 – 1:10	Previous Meeting Recap & Action Item Review	John Hope
1:10 – 1:25	SunGuide Software Update	Christine Shafik
1:25 – 1:30	AVL/RR Map Display at SEOC	Mark Dunthorn
1:30 – 1:35	<b>#1:</b> SG-4681: Region Based Actions ( <b>VOTE</b> )	Tucker Brown
1:35 – 1:40	<b>#2:</b> SG-3444: Non-Standard DMS Messages for Color DMS Do Not Display Well on Map ( <b>VOTE</b> )	Tucker Brown
1:40 – 1:45	<b>#3:</b> SG-4801: Partial Lane Blockage as a Lane Configuration ( <b>VOTE</b> )	Tucker Brown
1:45 – 1:50	<b>#4:</b> SG-4776: Ignore Out of Service Cameras when Finding Closest Camera to an Event ( <b>VOTE</b> )	Tucker Brown
1:50 – 1:55	<b>#5:</b> SG-1957: Incorrect "Last Updated" in Email Response Plan Items ( <b>VOTE</b> )	Tucker Brown



# Agenda



Time	Item	Lead
1:55 – 2:00	<b>#6:</b> SG-4635: Cloning Events and Injury Data Transferred ( <b>VOTE</b> )	Tucker Brown
2:00 – 2:05	<b>#7:</b> SG-4682: Email Template for Response Plans ( <b>VOTE</b> )	Tucker Brown
2:05 – 2:10	<b>#8:</b> SG-1586: Additions to the Event Details Dialog ( <b>VOTE</b> )	Tucker Brown
2:10 – 2:15	<b>#9:</b> SG-4949: Device Sequencing Loop Handling ( <b>VOTE</b> )	Tucker Brown
2:15 – 2:20	<b>#10:</b> SG-5077: RPG DMS Suggested Priorities Based on Event Type ( <b>VOTE</b> )	Tucker Brown
2:20 – 2:25	<b>#11:</b> SG-1713: EM Window Title Bar ( <b>VOTE</b> )	Tucker Brown
2:25 – 2:30	<b>#12:</b> SG-4966: Audit on Injuries ( <b>VOTE</b> )	Tucker Brown
2:30 – 2:35	<b>#13:</b> SG-3749: Events will be Highlighted That Haven't Been Updated in a Configured Amount of Time ( <b>VOTE</b> )	Tucker Brown



# Agenda



Time	Item	Lead
2:35 – 2:40	<b>#14:</b> SG-4761: Allow DMS Graphics to be Defined in EM Template ( <b>VOTE</b> )	Tucker Brown
2:40 – 2:45	<b>#15:</b> SG-3949: Alert Operator when an Event is Created through the SPARR App ( <b>VOTE</b> )	Tucker Brown
2:45 – 2:50	<b>#16:</b> SG-3123: Alert Users When C2C Missing for TvT Generation ( <b>VOTE</b> )	Tucker Brown
2:50 – 2:55	<b>#17:</b> SG-4948: Auto-Merge and Manual Merge with Travel Time are Inconsistent ( <b>VOTE</b> )	Tucker Brown
2:55 – 3:00	<b>#18:</b> SG-4870: For NTCIP Cameras, Set into Manual Mode Before Sending Manual Command ( <b>VOTE</b> )	AJ Skillern
3:00 – 3:55	Open Discussion	John Hope
3:55 – 4:00	Review Action Items	John Hope

CMB Agenda, slides, and attachments posted here:

[http://www.dot.state.fl.us/trafficoperations/ITS/Projects\\_Deploy/CMB.shtm](http://www.dot.state.fl.us/trafficoperations/ITS/Projects_Deploy/CMB.shtm)



# Previous Meetings Recap and Action Items Review

John Hope, Assistant CMB Chairman



# Previous Meeting Action Items

Owner	Action Item
Dan Smith	Wrong Way Driving Wavetronix – Test using WavetronixHD data to detect and track WWD events.
Christine Shafik	Send the RITSA/SITSA schedule slide.
Christine Shafik	Send list of future CMB items for the Districts to prioritize.
Christine Shafik	Send email reminder to the districts about responding to the pending JIRA tickets. Include the statistics of how many items are still pending.



# SunGuide Software Update

Christine Shafik, P.E., FDOT





## Release 7.2

- Released 10/5/19
- Currently deployed in CFX and District 1
- Hotfix 1 (fixes for 9 issues) currently being tested at TERL



## Release 7.2

- Hotfixes also being tested for Releases 7.1.1 and 7.1.2
- Starting with the next set, we'll only be providing hotfixes for the two most recent releases
  - 7.1.2 and 7.2



# Release 8.0

- 16 issues approved for this release in previous CMB meetings.
- 49 issues sent to CMB members for prioritization 1/10/20
- Results forwarded to districts 1/27/20



# Release 8.0

- 49 issues reviewed by districts – 20 issues prioritized
- 19 issues received 4 or more votes out of 8 responding districts and will be discussed today
- 30 issues received 3 votes or less
  - SwRI to provide cost estimates
  - Central Office to evaluate



## Release 8.0

- District comments for the RISC and RCA ConOps – under review at Central Office
- Release planned for October 2020



# QUESTIONS?

Christine Shafik, P.E., FDOT

[Christine.shafik@dot.state.fl.us](mailto:Christine.shafik@dot.state.fl.us)

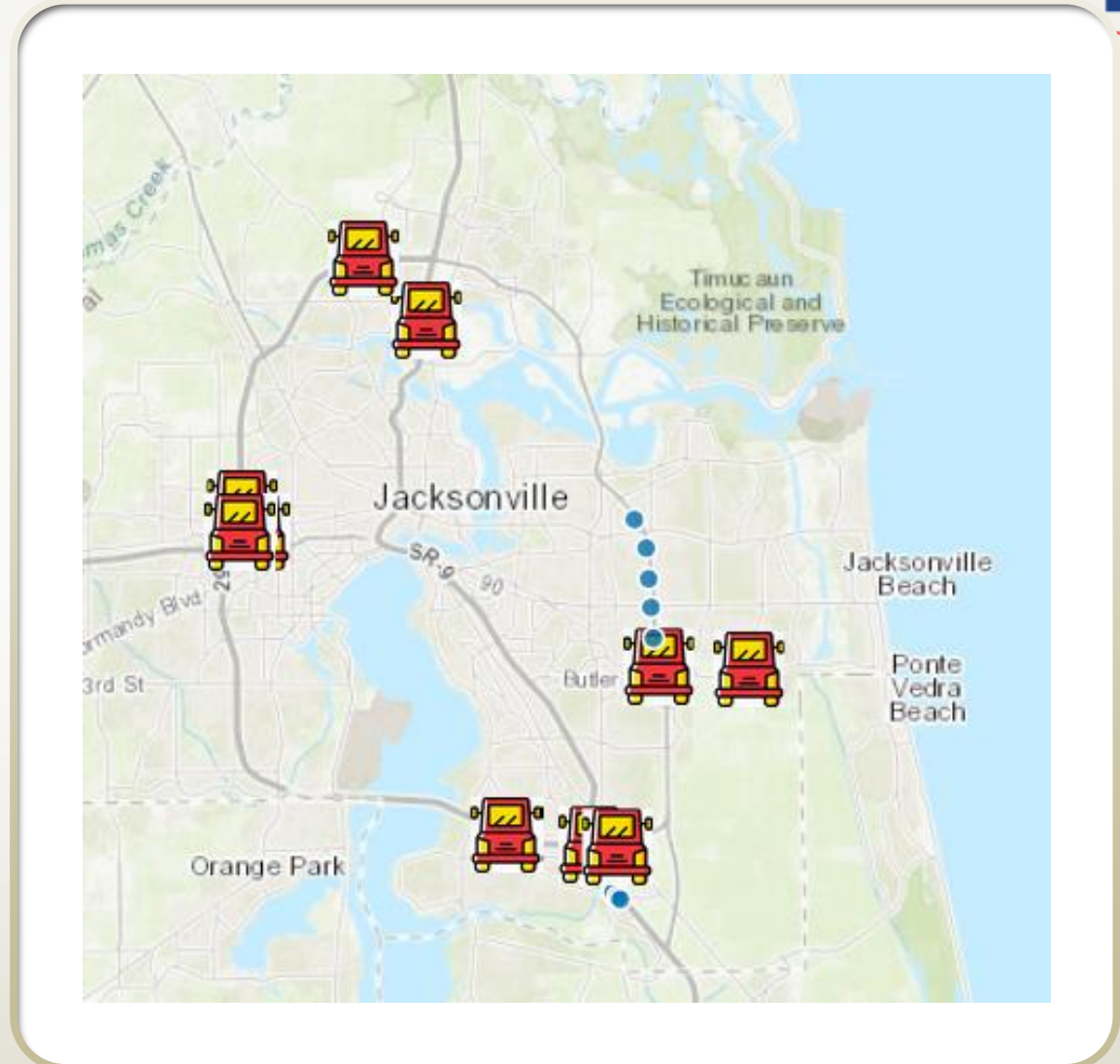


# AVL/RR Map Display at SEOC

Mark Dunthorn, HNTB

# AVL/RR Map

- Real-time Road Ranger locations displayed at the State Emergency Operations Center
- Location data sent from SunGuide via C2C
- Central Office to send instructions on how to configure this in SunGuide
- SEOC would like this to be available by end of February.







# QUESTIONS?

Christine Shafik, P.E., FDOT

[Christine.shafik@dot.state.fl.us](mailto:Christine.shafik@dot.state.fl.us)



# #1: SG-4681

## Region Based Actions

Tucker Brown, SwRI

# Defining Regions

- Situations have been brought up where it would be useful to dictate the actions of system based on the region where something occurred
  - IDS Alerts for users concentrating on a specific area
  - Changing the default mailing list for a response plan based on the event location
  - RISC responder lists
  - Easier way to define device permissions

# Defining Regions

- Users would define “regions”.
  - Use polygon based drawings on a map
- Regions could then be used throughout the system
  - **Assign email addresses to a region**
    - **EM would automatically put those addresses in as a the default for an event in that region**
  - Future possible uses
    - Assign RISC responders to a region
      - Narrow down the list of possible responders
    - Assign users to a region (or regions)
      - IDS would only send alerts to users who are assigned to that region
      - Could apply device permissions to only devices in that region



# TxDOT Contact Notification



- Port the application from TxDOT
- Will need to develop config dialogs as these are not currently WPF
- EM will still maintain Agencies
- Agency Contacts will be ported to the new Contact Notification
- AVL and IDS would be updated to use the new Agency Contacts



- Cost: \$54k
- Schedule: 8.0
- **VOTE – Using WebEx**



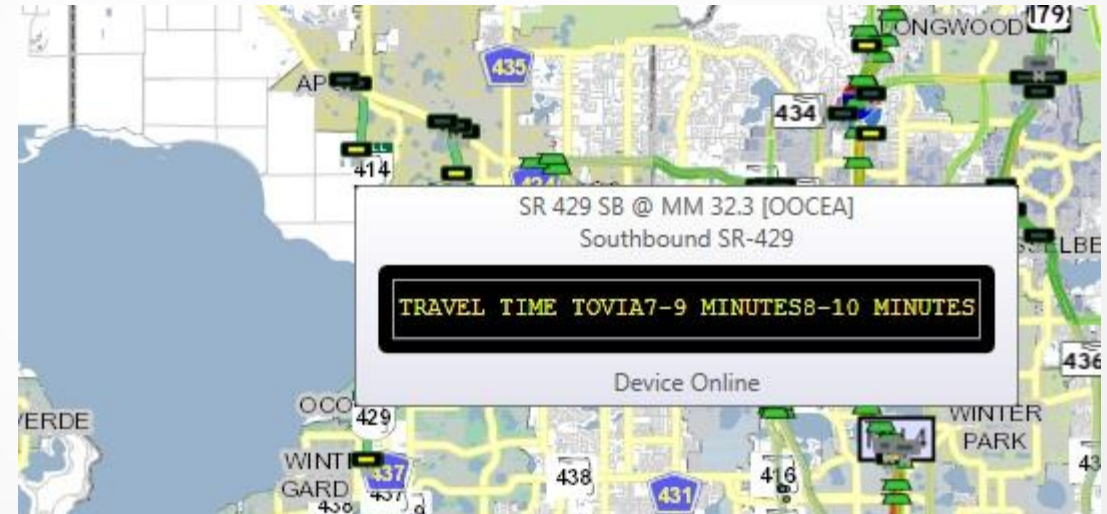
#2: SG-3444

# Non-Standard DMS Messages for Color DMS Do Not Display Well on Map

Tucker Brown, SwRI

# Display Issue

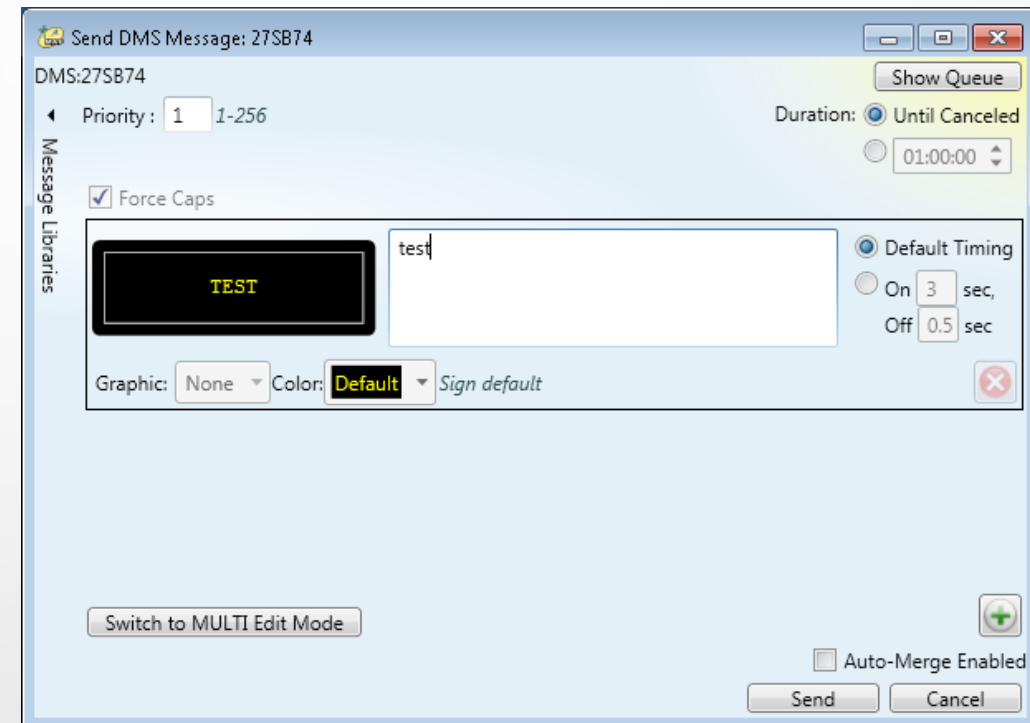
- Messages posted using MULTI composed in external (non-SunGuide) system
- Looks fine on sign but not in the Operator Map
- There are limitations to how MULTI is rendered in the OM regardless of the source.





# Proposed Solution

- Add additional functionality to Add Message control
  - Text alignment
  - Graphic positioning





- Cost: \$18k
- Schedule: 8.0
- **VOTE – Using WebEx**



# #3: SG-4801

## Partial Lane Blockage as a Lane Configuration

Tucker Brown, SwRI



# Issue and Proposed Enhancement



- Issue: Lane status currently includes Open, Blocked, and Unconfirmed.
- Proposed Enhancement
  - Add a “Partial Blockage” type
  - Make it configurable at the installation level so districts can choose if they want to use it.
  - This has implications on Lane Blockage descriptions on the UI, DMS, HAR, Reporting, and 511.



- Cost: \$15k
- Schedule: 8.0
- **VOTE – Using WebEx**



## #4: SG-4776

# Ignore Out of Service Cameras when Finding Closest Camera to an Event

Tucker Brown, SwRI



# Issue and Proposed Solution

- When searching for the nearest camera, device status is not taken into account.
- Proposed Solution
  - Disregard cameras that are currently “Out of Service” when searching for the nearest camera.



- Cost: \$1k
- Schedule: 8.0
- **VOTE – Using WebEx**





# #5: SG-1957

## Incorrect "Last Updated" in Email Response Plan Items

Tucker Brown , SwRI



# Issue



- The Email response plan item is populated when the response plan is generated
- This may be out of date by the time the response plan is activated, particularly if the response plan is reactivated more than once



# Proposed Solution



- Alert the operator if they activate the plan without regenerating the email item
  - Operator can choose to cancel the activation (so they can regenerate the email) or continue to activate the response plan.



- Cost: \$2k
- Schedule: 8.0
- **VOTE – Using WebEx**



# #6: SG-4635

## Cloning Events and Injury Data Transferred

Tucker Brown, SwRI



# Issue and Proposed Solution



- When an event is cloned, the Injuries selection is carried over to the new event.
- Enhancement
  - Injury information would not be carried over to the new event.

# Proposed Changes

- Is there any other information that should be carried over to a cloned event?
- Can we safely exclude anything (such as injuries) that is not included here?



- Cost: \$1k
- Schedule: 8.0
- **VOTE – Using WebEx**





# #7: SG-4682

## Email Template for Response Plans

Tucker Brown, SwRI



# Issue and Proposed Solution

- There is currently a single template for email generation in response plans. This is not flexible for operational needs.
- Proposed Solution
  - Allow for a default email template as well as the ability to configure event type specific templates.



- Cost: \$8k
- Schedule: 8.0
- **VOTE – Using WebEx**



# #8: SG-1586

## Additions to the Event Details Dialog

Tucker Brown, SwRI

- Issue: The “FHP Incident #” is the only field for FHP information
- Proposed Enhancement
  - Rename the “FHP Incident #” to “FHP CAD #”
  - Add a field for “FHP Case #”
    - This needs to be made auditable as this is rarely known while the event is open.



- Cost: \$3k
- Schedule: 8.0
- **VOTE – Using WebEx**



# #9: SG-4949

## Device Sequencing Loop Handling

Tucker Brown, SwRI

- Issue: When a loop occurs in the device linking file, it is possible to get incorrect DMS (downstream or on opposite direction).
- Proposed Enhancement
  - Once the search leaves a roadway, it can never return to that roadway.
  - Devices on the same roadway but in the opposite direction would be excluded.





- Cost: \$5k
- Schedule: 8.0
- **VOTE – Using WebEx**



# #10: SG-5077

## RPG DMS Suggested Priorities Based on Event Type

Tucker Brown, SwRI

# Issue and Proposed Enhancement

- Issue: D5 operations follows rules for prioritizing DMS messages based on event type. This is not aligned with how SunGuide suggests DMS priorities in RPG, which is only based on event severity and distance from the event.
- Proposed Enhancement
  - 1) Allow configuring a static range of priorities based on event types. For example, a Crash event in D5 will utilize priorities 1-10 based on distance from the event and event severity. While a Scheduled Road Work event would utilize priorities 11-20.
  - 2) Have a default range of priorities that would be used for all event types that are not specifically configured for a range of priorities.
  - If unwanted, default range 1-255 and not specify any event type ranges.



- Cost: \$6k
- Schedule: 8.0
- **VOTE – Using WebEx**



# #11: SG-1713

## EM Window Title Bar

Tucker Brown, SwRI



# Issue and Proposed Enhancement



- Issue: Current EM event dialog list the event number in the dialog title bar.
- Proposed Enhancement
  - In addition to the event number, the event type and location would be available in the title bar.



- Cost: \$1k
- Schedule: 8.0
- **VOTE – Using WebEx**



# #12: SG-4966

## Audit on Injuries

### Tucker Brown, SwRI





# Issue and Proposed Enhancement



- Issue: There is no current way to audit the Injury Type. A need has been identified where a fatality may be identified later and the event needs to be updated.
- Proposed Enhancement
  - Allow the modification of the Injury Type through audit.



- Cost: \$11k
- Schedule: 8.0
- **VOTE – Using WebEx**



# #13: SG-3749

Events will be Highlighted That  
Haven't Been Updated in a  
Configured Amount of Time

Tucker Brown, SwRI



# Issue and Proposed Enhancement



- Without looking at each event, it is difficult to tell how long its been since the event was last updated
- Enhancement:
  - A configurable value will set the amount of time an event should go without being updated
  - The event will be highlighted in the event list if it hasn't been updated in the configured amount of time.



- Cost: \$3k
- Schedule: 8.0
- **VOTE – Using WebEx**



# #14: SG-4761

## Allow DMS Graphics to be Defined in EM Template

Tucker Brown, SwRI



# Issue



- Currently, DMS graphics are applied in response plans if the following is true:
  - DMS sign supports Graphics
  - Graphic is defined for the event type
- There is no way to tell the software to exclude the graphic.

# Proposed Solution

- Allow a template to define whether or not to allow a graphic to be added.
  - Even if the template allows the graphics, previous conditions still must be true.
  - Allows a default template to be set for all DMS (include or not).
  - Allows a specific device template to override the functionality with a different template that may have a different setting to include (or not include) the graphic.





- Cost: \$11k
- Schedule: 8.0
- **VOTE – Using WebEx**



# #15: SG-3949

## Alert Operator when an Event is Created through the SPARR App

Tucker Brown, SwRI

- Issue: When SPARR users create an event, it is silently added to the list of events in the UI. If not in communication, operators may miss actions they need to complete against those events.
- Proposed Enhancement
  - Have a pop-up or other notification to users that a SPARR user created an event
  - Implement a permission to receive these so administrators can configure how they get the notification



- Cost: \$3k
- Schedule: 8.0
- **VOTE – Using WebEx**



# #16: SG-3123

## Alert Users When C2C Missing for TvT Generation

Tucker Brown, SwRI

- Issue: When a link is deleted from C2C, there is no way for a remote district to know that link is no longer available.
- Proposed Enhancement
  - If a link is not in the TvT status cache, check to see if there are other links available from the same network. If none are available, the data source is probably not available and no notification should be sent. If there are links from that source available, send a notification to an email set in the config file and specify the link is no longer in the configuration. Resend at a configurable interval while the condition persists.



- Cost: \$3k
- Schedule: 8.0
- **VOTE – Using WebEx**



#17: SG-4948

# Auto-Merge and Manual Merge with Travel Time are Inconsistent

Tucker Brown, SwRI





# Issue and Proposed Enhancement



- Issue:

- When auto-merging, the software limits the phases to a maximum of 2 phases.
- When manually merging, there is no maximum number of phases and this can result in messages of 3 or 4 phases.

- Proposed Enhancement

- Allow districts to configure the maximum number of phases
- Change manually and auto merged messages to follow the maximum number of phases to be consistent with each other



- Cost: \$9k
- Schedule: 8.0
- **VOTE – Using WebEx**



#18: SG-4870

# For NTCIP Cameras, Set into Manual Mode Before Sending Manual Command

AJ Skillern, SwRI

# Issue and Proposed Enhancement

- Issue: Using NTCIP, if a camera is in automatic focus/iris mode and the user sends a command to change the focus/iris, the system does not send a command to change the camera to manual focus/iris mode.
  - Some cameras will accept this but some interpret this as a command to send the camera to a manual focus/iris mode. It then requires the user to click the focus/iris command again to start the focus/iris action.
- Proposed Enhancement
  - If the camera is in automatic mode, send a command to change the camera to manual mode before sending the requested focus/iris action.



- Cost: \$3k
- Schedule: 8.0
- **VOTE – Using WebEx**



# Open Discussion

John Hope, Assistant CMB Chairman



# Review Action Items

John Hope, Assistant CMB Chairman