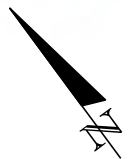


BEELINE HIGHWAY

BEELINE HIGHWAY

NORHLAKE BOULEVARD

NORHLAKE BOULEVARD

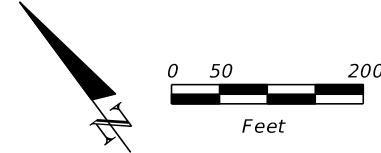


0 40 200
Feet

— PARCEL LINE

FOR ILLUSTRATIVE PURPOSES ONLY
AERIAL PHOTO ACQUIRED 2015

REVISIONS				STATE OF FLORIDA DEPARTMENT OF TRANSPORTATION			SR 710 / BEELINE HIGHWAY EXISTING AERIAL	SHEET NO. 1
DATE	DESCRIPTION	DATE	DESCRIPTION	ROAD NO.	COUNTY	FINANCIAL PROJECT ID		
				SR 710	PALM BEACH	18956		



— PARCEL LINE

FOR ILLUSTRATIVE PURPOSES ONLY
AERIAL PHOTO ACQUIRED 2015

REVISIONS				STATE OF FLORIDA DEPARTMENT OF TRANSPORTATION			SR 710 / NORTHLAKE BOULEVARD PDLT	SHEET NO.
DATE	DESCRIPTION	DATE	DESCRIPTION	ROAD NO.	COUNTY	FINANCIAL PROJECT ID		
				SR 710	PALM BEACH	18956		1

SUSERS SDATES STIMES SFILES



BEELINE HIGHWAY

MATCHLINE



PARCEL LINE

FOR ILLUSTRATIVE PURPOSES ONLY
AERIAL PHOTO ACQUIRED 2015

REVISIONS				STATE OF FLORIDA DEPARTMENT OF TRANSPORTATION			SR 710 / NORTHLAKE BOULEVARD PDLT	SHEET NO.
DATE	DESCRIPTION	DATE	DESCRIPTION	ROAD NO.	COUNTY	FINANCIAL PROJECT ID		
				SR 710	PALM BEACH	18956		2

SUSERS SDATES STIMES SFILES



REVISIONS		REVISIONS		STATE OF FLORIDA DEPARTMENT OF TRANSPORTATION			SR 710/ BEELINE HIGHWAY S-E QUAD	SHEET NO. 4
DATE	DESCRIPTION	DATE	DESCRIPTION	ROAD NO.	COUNTY	FINANCIAL PROJECT ID		
				SR 710	PALM BEACH	18956		



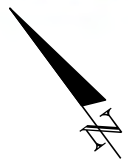
710

BEELINE HIGHWAY

NORHLAKE BOULEVARD

BEELINE HIGHWAY

NORHLAKE BOULEVARD



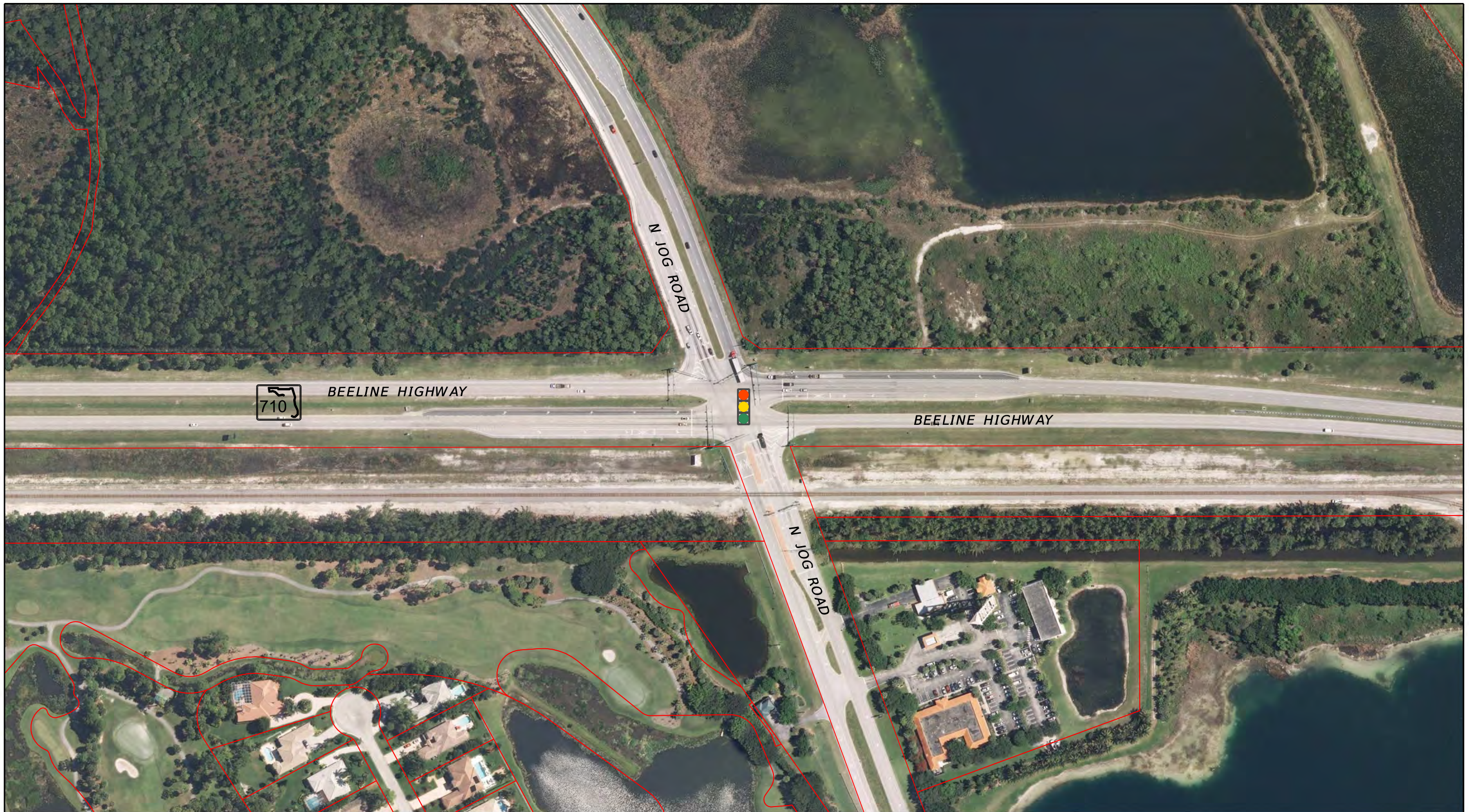
0 50 200
Feet

— PARCEL LINE

FOR ILLUSTRATIVE PURPOSES ONLY
AERIAL PHOTO ACQUIRED 2015

REVISIONS				STATE OF FLORIDA DEPARTMENT OF TRANSPORTATION			SR 710/ BEELINE HIGHWAY S-E QUAD ZONE 1	SHEET NO. 4A
DATE	DESCRIPTION	DATE	DESCRIPTION	ROAD NO.	COUNTY	FINANCIAL PROJECT ID		
				SR 710	PALM BEACH	18956		

SUSERS SDATES STIMES SFILES

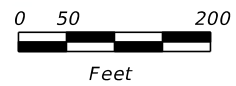


BEELINE HIGHWAY

BEELINE HIGHWAY

N JOG ROAD

N JOG ROAD

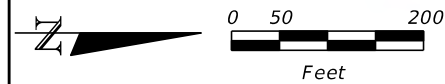
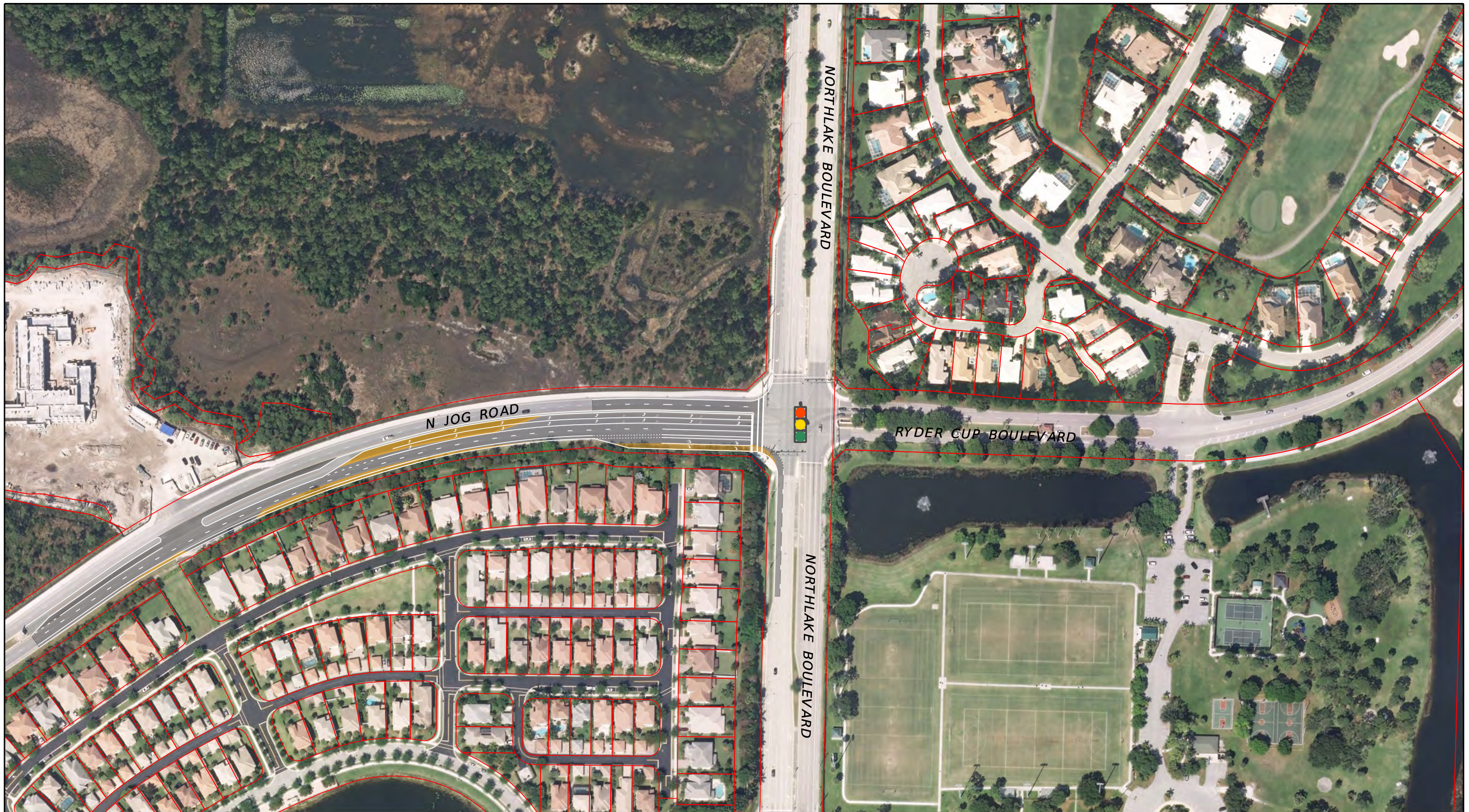


— PARCEL LINE

FOR ILLUSTRATIVE PURPOSES ONLY
AERIAL PHOTO ACQUIRED 2015

REVISIONS				STATE OF FLORIDA DEPARTMENT OF TRANSPORTATION			SR 710/ BEELINE HIGHWAY S-E QUAD ZONE 2	SHEET NO. 4B
DATE	DESCRIPTION	DATE	DESCRIPTION	ROAD NO.	COUNTY	FINANCIAL PROJECT ID		
				SR 710	PALM BEACH	18956		

SUSERS SDATES STIMES SFILES



— PARCEL LINE

FOR ILLUSTRATIVE PURPOSES ONLY
AERIAL PHOTO ACQUIRED 2015

REVISIONS			
DATE	DESCRIPTION	DATE	DESCRIPTION

--

STATE OF FLORIDA DEPARTMENT OF TRANSPORTATION		
ROAD NO.	COUNTY	FINANCIAL PROJECT ID
SR 710	PALM BEACH	18956

SR 710/ BEELINE HIGHWAY S-E QUAD ZONE 3
--

SHEET NO.
4C