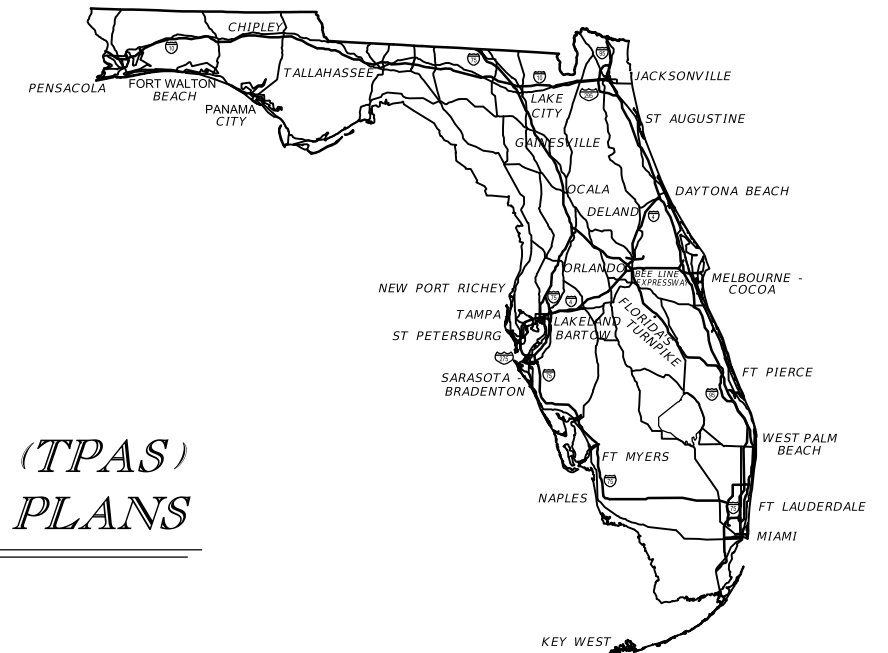


STATE OF FLORIDA  
DEPARTMENT OF TRANSPORTATION

CONTRACT PLANS

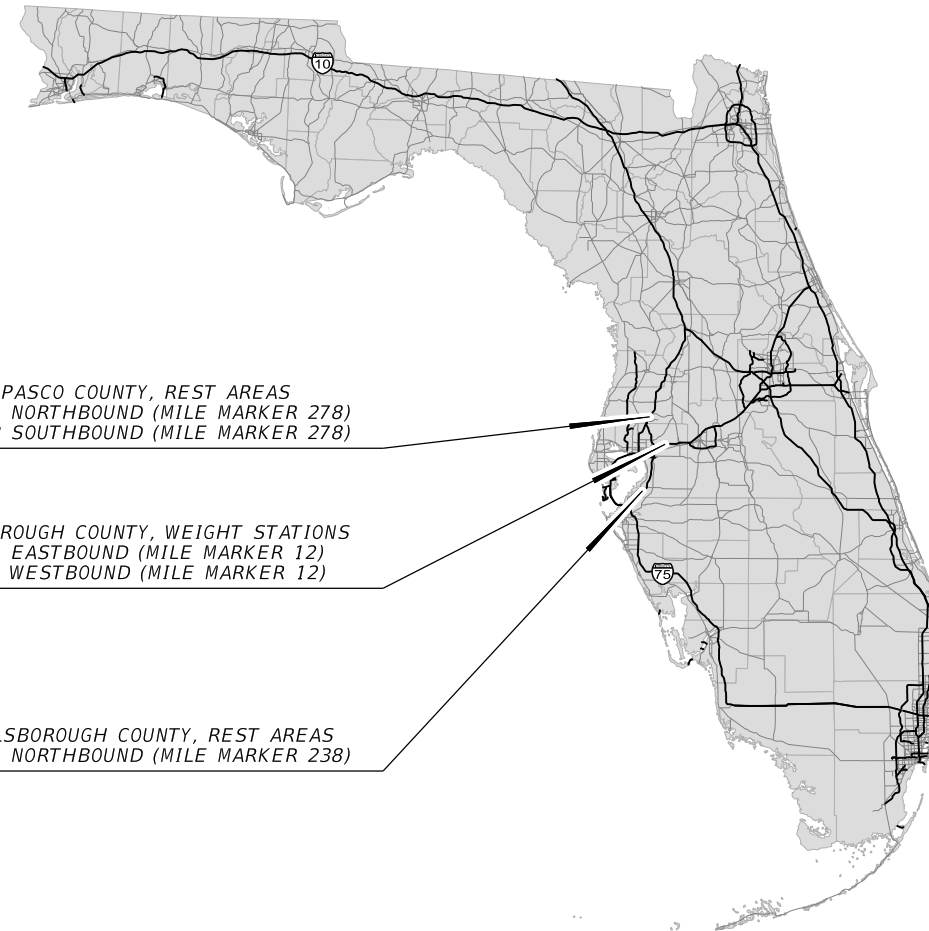
FINANCIAL PROJECT ID 440089-1-52-01  
(FEDERAL FUNDS)

TRUCK PARKING AVAILABILITY SYSTEMS (TPAS)  
INTELLIGENT TRANSPORTATION SYSTEM PLANS



INDEX OF TPAS PLANS

SHEET NO.	SHEET DESCRIPTION
1	KEY SHEET
2	GENERAL NOTES
3	GUIDESIGN WORKSHEET
IT-01 TO IT-05A	ITS PLAN SHEETS



ITS SHOP DRAWINGS  
TO BE SUBMITTED TO:

30% PLANS PREPARED BY:

NOTE: THE SCALE OF THESE PLANS MAY  
HAVE CHANGED DUE TO REPRODUCTION.

**GOVERNING STANDARDS AND SPECIFICATIONS:**  
Florida Department of Transportation, 2016 Design Standards and revised Index Drawings as appended herein, and 2016 Standard Specifications for Road and Bridge Construction, as amended by Contract Documents.

For Design Standards click on the "Design Standards" link at the following web site:  
<http://www.dot.state.fl.us/rddesign/DesignStandards>

For the Standard Specifications for Road and Bridge Construction click on the "Specifications" link at the following web site:  
<http://www.dot.state.fl.us/specificationsoffice/StandardSpecifications>

KEY SHEET REVISIONS	
DATE	DESCRIPTION
ILLUSTRATION PURPOSE ONLY	

TRUCK PARKING AVAILABILITY  
SYSTEMS (TPAS) PLANS  
ENGINEER OF RECORD: \_\_\_\_\_

P.E. NO.: \_\_\_\_\_

FISCAL YEAR	SHEET NO.
16	1

FDOT PROJECT MANAGER:

GENERAL NOTES

1. THE LOCATION(S) OF THE UTILITIES SHOWN IN THE PLANS ARE BASED ON LIMITED INVESTIGATION TECHNIQUES, AND MARK-UPS FROM UTILITY OWNERS. ALL UTILITIES SHOULD BE CONSIDERED APPROXIMATE ONLY.
2. THE CONTRACTOR SHALL NOTIFY NON SUNSHINE SUBSCRIBERS AND UTILITY OWNERS LISTED THROUGH SUNSHINE STATE ONE CALL OF FLORIDA (811) TWO BUSINESS DAYS IN ADVANCE OF BEGINNING CONSTRUCTION ON THE JOB SITE.
3. FIBER OPTIC AND POWER PULL BOXES AND CONDUIT SHALL BE LOCATED WITHIN 100 FEET OF THE DEVICE THEY SUPPORT. ITS DEVICE LOCATIONS ARE APPROXIMATE AND MAY REQUIRE RELOCATION BY THE PROJECT ENGINEER. IF DEVICE RELOCATIONS OCCUR FOR ANY REASON, THE PULL BOXES AND CONDUIT SUPPORTING THAT DEVICE SHALL BE RELOCATED AND/OR EXTENDED.
4. INSTALL FIBER OPTIC CONDUIT FOR COMMUNICATION TO DEVICES AS SHOWN IN THE PLANS AND IN ACCORDANCE WITH ALL FDOT STANDARDS FOR CONDUIT INSTALLATION.
5. THE CONTRACTOR SHALL BE RESPONSIBLE FOR FURNISHING AND INSTALLING ABOVE GROUND TUBULAR ROUTE MARKERS PER SECTION 630 OF THE FDOT STANDARD SPECIFICATIONS. MARKERS SHALL BE PLACED AT A MAXIMUM OF 500 FEET AND AT EVERY PULL AND SPLICE BOX LOCATION. A MARKER LABEL TEMPLATE SHALL BE PROVIDED FOR REVIEW.
6. THE CONDUIT SHALL BE SEALED WITH THE SPECIFIED DUCT PLUG AT THE TIME OF CONDUIT INSTALLATION AND AFTER FINAL FIBER INSTALLATION.
7. ELECTRICAL POWER SERVICE METERS SHALL HAVE A SEPARATE BREAKER FOR EACH ITS CIRCUIT.
8. THE CONTRACTOR SHALL HAND DIG (SOFT DIG) TO A DEPTH OF FOUR (4) FEET WHERE UTILITIES ARE IN CONFLICT PRIOR TO USE OF A MECHANICAL AUGER. ANY POTENTIAL CONFLICTS SHALL BE REPORTED TO THE PROJECT ENGINEER IMMEDIATELY.

UTILITY OWNERS

Bright House Networks  
Marvin Usry Jr.  
407-532-8509

Hillsborough County Water  
813-272-5977

Pasco County Utilities  
727-847-8131

Spectrum  
Thomas Sansing  
813-862-0522

Spectrum  
Ron Connor  
727-656-8365

Tampa Bay Water  
Danielle Keirsey  
813-929-4552

Tampa Electric Company  
Marilyn Aloj  
813-223-0800

TECO Peoples Gas Transmission  
Luis Castellanos  
813-275-3743

Frontier Communications  
David Reed  
352-345-2348

Withlacoochee River Electric  
Corey Littlefield  
352-588-5115

LEGEND

EXISTING	PROPOSED	
		IN-GROUND SENSORS
		REPEATER
		ACCESS POINT
		DETECTION ZONE
		CCTV WITH POLE
		MVDS
		MULTI-POST STATIC SIGN W/ ELECTRICAL DISPLAY SIGN
		BASE MOUNT CABINET
		POLE MOUNT CABINET
		PULL BOX
		FIBER OPTIC PULL BOX
		SPLICE VAULT
		POWER SERVICE
		POLE
		DMS
		CONDUIT, OPEN TRENCH
		CONDUIT, DIRECTIONAL BORE
		FIBER OPTIC RUN
		POWER RUN
		WIRELESS ANTENNA

REVISIONS				STATE OF FLORIDA DEPARTMENT OF TRANSPORTATION			<i>GENERAL NOTES</i>	SHEET NO.
DATE	DESCRIPTION	DATE	DESCRIPTION	ROAD NO.	COUNTY	FINANCIAL PROJECT ID		2
	<b>ILLUSTRATION PURPOSE ONLY</b>			VARIES	VARIES	440089-1-52-01		

SIGN NAME	REST	QTY	SIGN NUMBER	STATION(S)	
PANEL	BORDER			none	
WIDTH	15'-6"	WIDTH	2"		
HEIGHT	8'-6"	RADII	12"		
LEGEND	White	COLOR	White		
COLOR	Blue				
SYMBOL(S)	ANGLE	X	Y	WID	HT
DMS	0	72.7	29	44	22
SIGN NUMBER	NUMBER OF POSTS	CLEARANCE Edge Of Lane	COLUMN SIZE	AVERAGE LENGTH	



NO. OF LIGHT FIXTURES	FIXTURE SPACING	PHOTOMETRIC CURVE	WATT	VOLTAGE

COPY		R	E	S	T	A	R	E	A	L									
SPACE	40.7	12.2	11	11.5	8.9	12	14.3	12.2	10.2	12.1	40.7	104.5							
COPY		T	R	U	C	K	P	A	R	K	I	N	G	L					
SPACE	19.4	11	12.2	12.6	12.4	9.8	12	10.7	14.3	12.2	11.8	5.8	12.6	9.7	19.4	147.1			
COPY		S	P	A	C	E	S	A	V	A	I	L	A	B	L	E	L		
SPACE	15.5	10.2	8.9	11.8	10.8	8.6	8.2	12	10.9	9.8	12	4.8	8.2	12	10.2	9.2	7.4	15.5	155
COPY																			
SPACE																			
COPY																			
SPACE																			
COPY																			
SPACE																			

SIGN NAME	WEIGH	QTY	SIGN NUMBER	STATION(S)	
PANEL	BORDER			none	
WIDTH	15'-6"	WIDTH	2"		
HEIGHT	8'-6"	RADII	12"		
LEGEND	White	COLOR	White		
COLOR	Blue				
SYMBOL(S)	ANGLE	X	Y	WID	HT
DMS	0	72.7	29	44	22
SIGN NUMBER	NUMBER OF POSTS	CLEARANCE Edge Of Lane	COLUMN SIZE	AVERAGE LENGTH	



NO. OF LIGHT FIXTURES	FIXTURE SPACING	PHOTOMETRIC CURVE	WATT	VOLTAGE

COPY		W	E	I	G	H	S	T	A	T	I	O	N	L					
SPACE	23.3	14.9	11.4	5.3	12.6	9.7	12	11.5	9.8	13.1	11	5.3	13	9.7	23.3	139.3			
COPY		T	R	U	C	K	P	A	R	K	I	N	G	L					
SPACE	19.4	11	12.2	12.6	12.4	9.8	12	10.7	14.3	12.2	11.8	5.8	12.6	9.7	19.4	147.1			
COPY		S	P	A	C	E	S	A	V	A	I	L	A	B	L	E	L		
SPACE	15.5	10.2	8.9	11.8	10.8	8.6	8.2	12	10.9	9.8	12	4.8	8.2	12	10.2	9.2	7.4	15.5	155
COPY																			
SPACE																			
COPY																			
SPACE																			
COPY																			
SPACE																			

SIGN NAME		QTY	SIGN NUMBER	STATION(S)	
PANEL	BORDER				
WIDTH	WIDTH				
HEIGHT	RADII				
LEGEND	COLOR				
COLOR					
SYMBOL(S)	ANGLE	X	Y	WID	HT
SIGN NUMBER	NUMBER OF POSTS	CLEARANCE Edge Of Lane	COLUMN SIZE	AVERAGE LENGTH	

NO. OF LIGHT FIXTURES	FIXTURE SPACING	PHOTOMETRIC CURVE	WATT	VOLTAGE

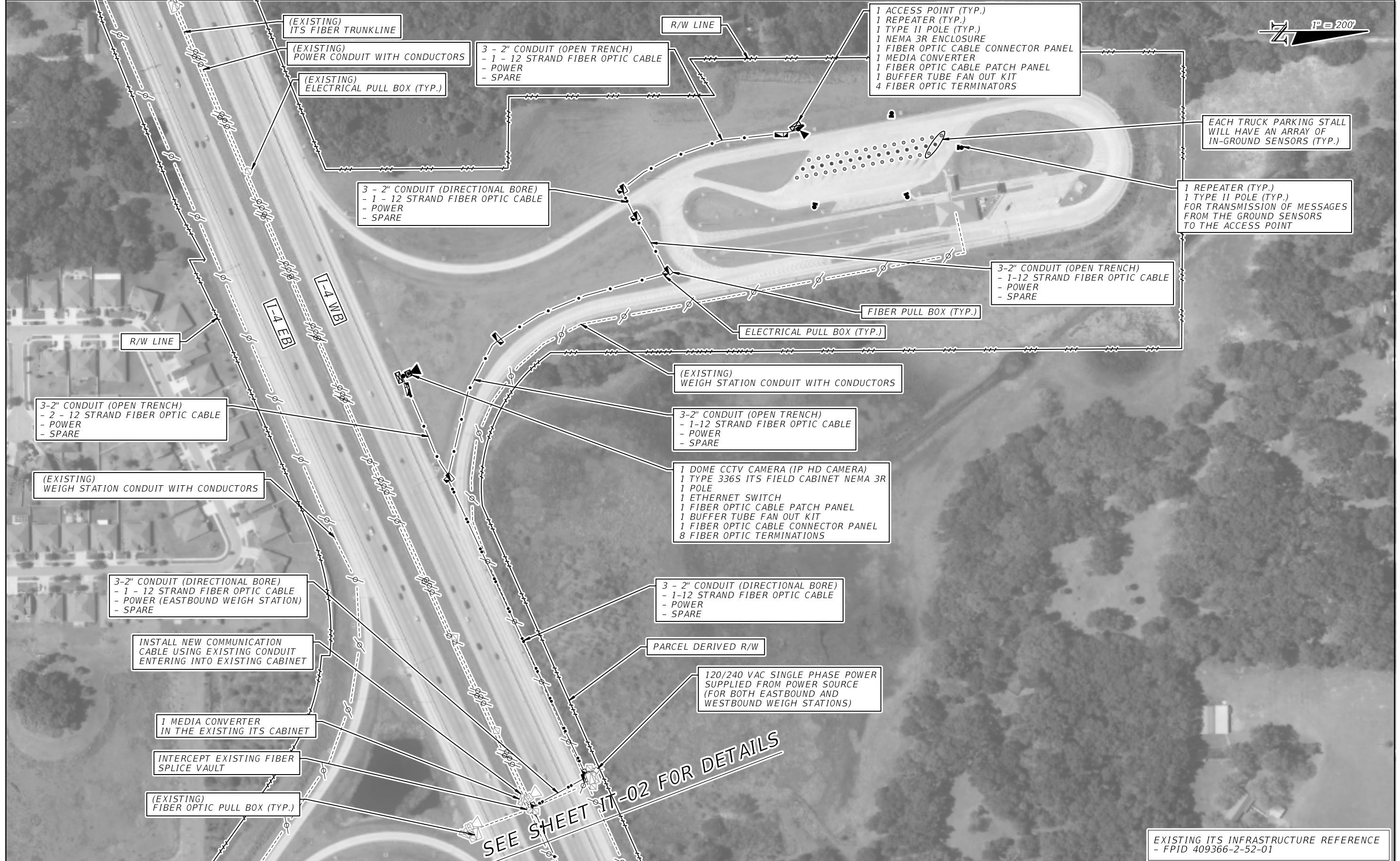
COPY																			
SPACE																			
COPY																			
SPACE																			
COPY																			
SPACE																			
COPY																			
SPACE																			
COPY																			
SPACE																			

SIGN NAME		QTY	SIGN NUMBER	STATION(S)	
PANEL	BORDER				
WIDTH	WIDTH				
HEIGHT	RADII				
LEGEND	COLOR				
COLOR					
SYMBOL(S)	ANGLE	X	Y	WID	HT
SIGN NUMBER	NUMBER OF POSTS	CLEARANCE Edge Of Lane	COLUMN SIZE	AVERAGE LENGTH	

NO. OF LIGHT FIXTURES	FIXTURE SPACING	PHOTOMETRIC CURVE	WATT	VOLTAGE

COPY																			
SPACE																			
COPY																			
SPACE																			
COPY																			
SPACE																			
COPY																			
SPACE																			
COPY																			
SPACE																			

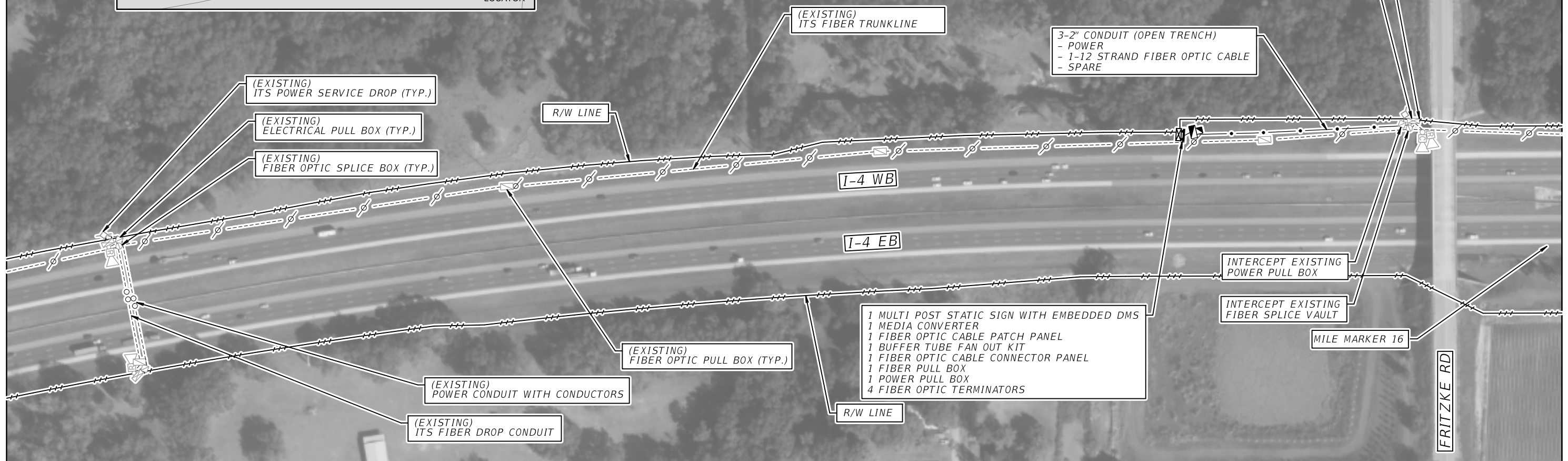
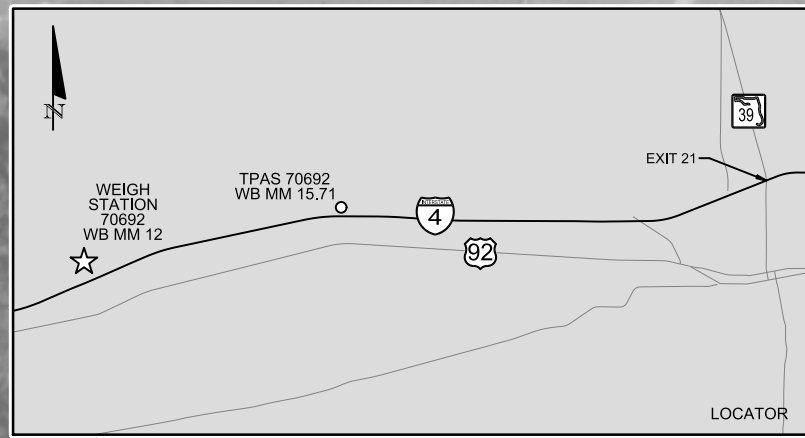
DATE		DESCRIPTION		DATE		DESCRIPTION		STATE OF FLORIDA DEPARTMENT OF TRANSPORTATION			GUIDESIGN WORKSHEET		SHEET NO. 3
		ILLUSTRATION PURPOSE ONLY						ROAD NO.	COUNTY	FINANCIAL PROJECT ID			
								VARIES	VARIES	440089-1-52-01			



SEE SHEET IT-02 FOR DETAILS

EXISTING ITS INFRASTRUCTURE REFERENCE  
- FPID 409366-2-52-01

REVISIONS		DESCRIPTION		STATE OF FLORIDA DEPARTMENT OF TRANSPORTATION			TRUCK PARKING AVAILABILITY SYSTEM HILLSBOROUGH COUNTY, FDOT DISTRICT 7 WEIGH STATION 70692 (16 SPACES) WESTBOUND MILE MARKER 12	SHEET NO.  IT-01
DATE	DESCRIPTION	DATE	DESCRIPTION	ROAD NO.	COUNTY	FINANCIAL PROJECT ID		
			ILLUSTRATION PURPOSE ONLY	I-4	HILLSBOROUGH	440089-1-52-01		



WEIGH STATION  
TRUCK PARKING  
XXX  
SPACES AVAILABLE

TRUCK PARKING AVAILABILITY SIGN WITH 3-DIGIT EMBEDDED DMS AT WB MM 15.71 EAST OF WEIGH STATION (MM 12) (ADJUST SIGN LOCATION PER MUTCD SIGN SPACING REQUIREMENTS)  
- 3-DIGIT EMBEDDED DMS  
- POWER FROM NEAREST ITS CABINET  
- POLE MOUNTED NEMA CABINET  
- COMMUNICATION FROM NEAREST ITS CABINET

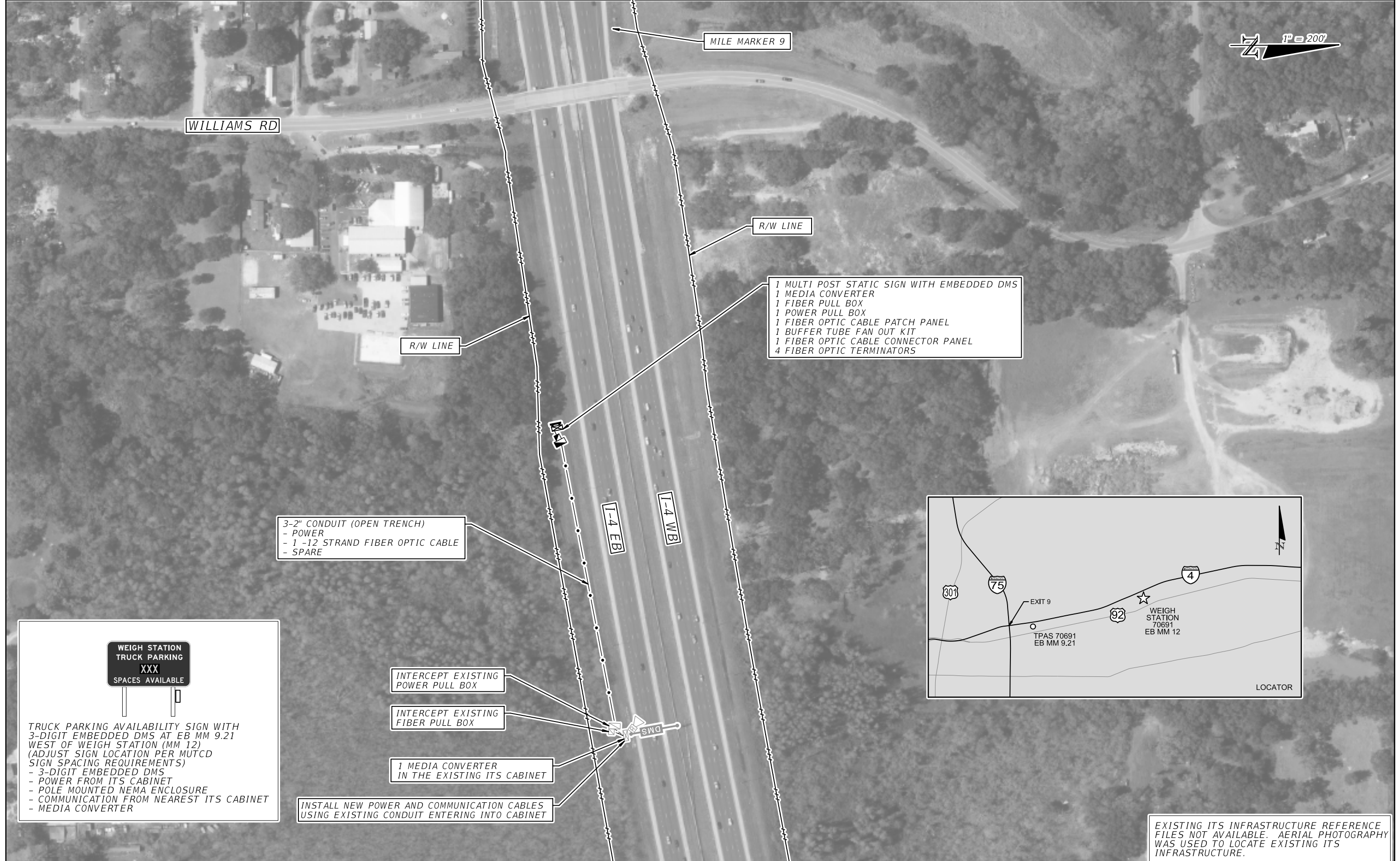
EXISTING ITS INFRASTRUCTURE REFERENCE  
- FPID 409366-2-52-01

REVISIONS		DESCRIPTION		STATE OF FLORIDA DEPARTMENT OF TRANSPORTATION			TRUCK PARKING AVAILABILITY SYSTEM HILLSBOROUGH COUNTY, FDOT DISTRICT 7 TPAS SIGN 70692 WESTBOUND MILE MARKER 15.71	SHEET NO.  IT-01A
DATE	DESCRIPTION	DATE	DESCRIPTION	ROAD NO.	COUNTY	FINANCIAL PROJECT ID		
			<b>ILLUSTRATION PURPOSE ONLY</b>	I-4	HILLSBOROUGH	440089-1-52-01		



EXISTING ITS INFRASTRUCTURE REFERENCE  
- FPID 409366-2-52-01

REVISIONS		DESCRIPTION		STATE OF FLORIDA DEPARTMENT OF TRANSPORTATION			TRUCK PARKING AVAILABILITY SYSTEM HILLSBOROUGH COUNTY, FDOT DISTRICT 7 WEIGH STATION 70691 (16 SPACES) EASTBOUND MILE MARKER 12	SHEET NO.  IT-02
DATE	DESCRIPTION	DATE	DESCRIPTION	ROAD NO.	COUNTY	FINANCIAL PROJECT ID		
			<b>ILLUSTRATION PURPOSE ONLY</b>	I-4	HILLSBOROUGH	440089-1-52-01		



3-2" CONDUIT (OPEN TRENCH)  
 - POWER  
 - 1 -12 STRAND FIBER OPTIC CABLE  
 - SPARE

1 MULTI POST STATIC SIGN WITH EMBEDDED DMS  
 1 MEDIA CONVERTER  
 1 FIBER PULL BOX  
 1 POWER PULL BOX  
 1 FIBER OPTIC CABLE PATCH PANEL  
 1 BUFFER TUBE FAN OUT KIT  
 1 FIBER OPTIC CABLE CONNECTOR PANEL  
 4 FIBER OPTIC TERMINATORS

INTERCEPT EXISTING  
 POWER PULL BOX

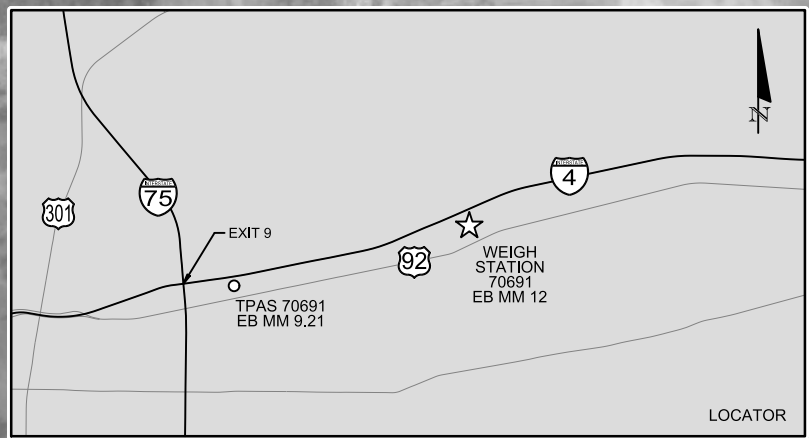
INTERCEPT EXISTING  
 FIBER PULL BOX

1 MEDIA CONVERTER  
 IN THE EXISTING ITS CABINET

INSTALL NEW POWER AND COMMUNICATION CABLES  
 USING EXISTING CONDUIT ENTERING INTO CABINET

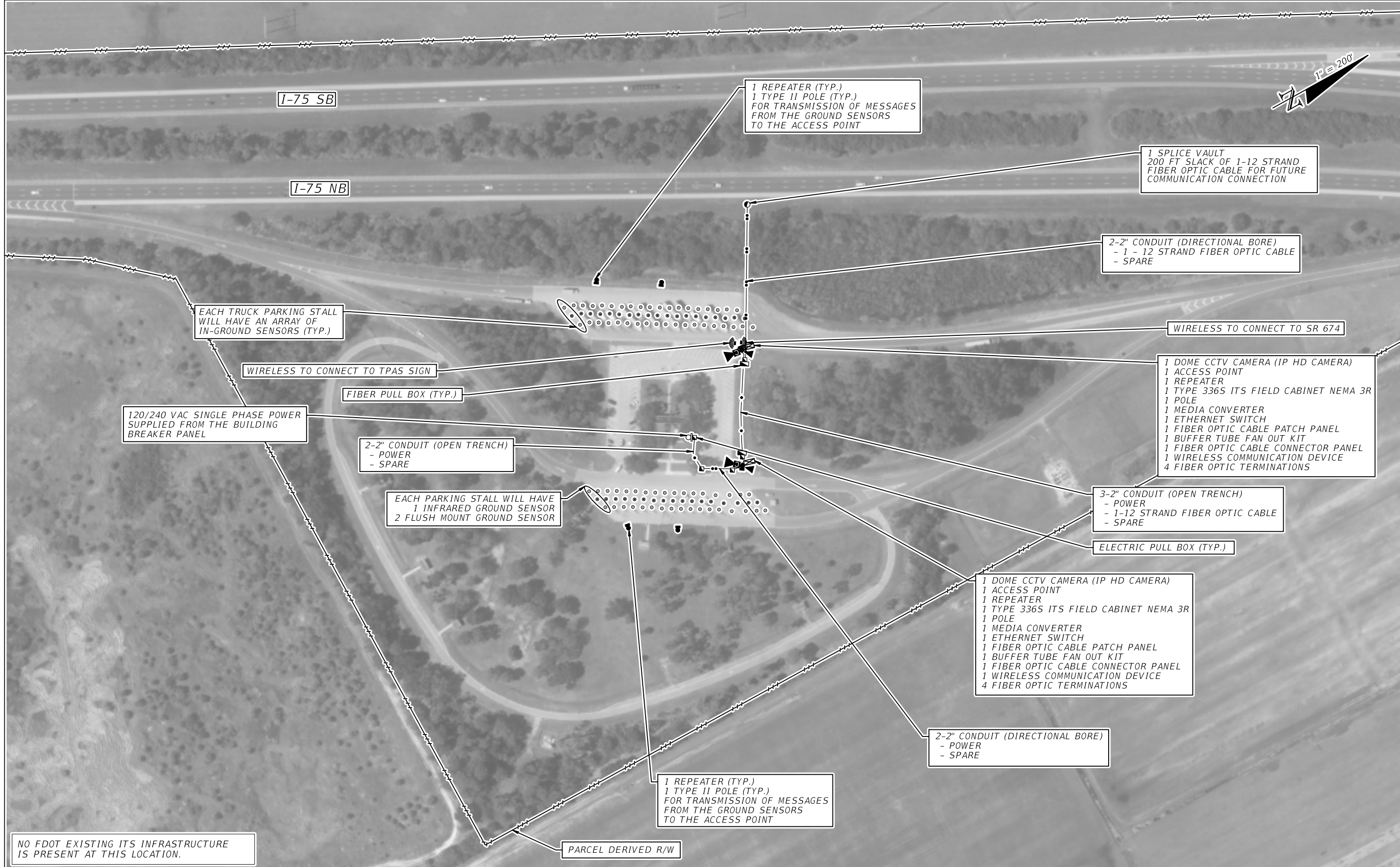
**WEIGH STATION  
 TRUCK PARKING  
 XXX  
 SPACES AVAILABLE**

TRUCK PARKING AVAILABILITY SIGN WITH  
 3-DIGIT EMBEDDED DMS AT EB MM 9.21  
 WEST OF WEIGH STATION (MM 12)  
 (ADJUST SIGN LOCATION PER MUTCD  
 SIGN SPACING REQUIREMENTS)  
 - 3-DIGIT EMBEDDED DMS  
 - POWER FROM ITS CABINET  
 - POLE MOUNTED NEMA ENCLOSURE  
 - COMMUNICATION FROM NEAREST ITS CABINET  
 - MEDIA CONVERTER



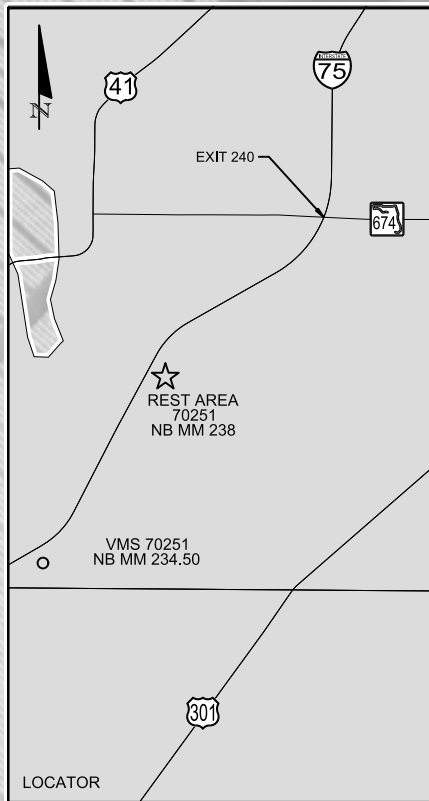
EXISTING ITS INFRASTRUCTURE REFERENCE  
 FILES NOT AVAILABLE. AERIAL PHOTOGRAPHY  
 WAS USED TO LOCATE EXISTING ITS  
 INFRASTRUCTURE.

REVISIONS		DESCRIPTION		STATE OF FLORIDA DEPARTMENT OF TRANSPORTATION			TRUCK PARKING AVAILABILITY SYSTEM HILLSBOROUGH COUNTY, FDOT DISTRICT 7 TPAS SIGN 70691 EASTBOUND MILE MARKER 9.21	SHEET NO.  IT-02A
DATE	DESCRIPTION	DATE	DESCRIPTION	ROAD NO.	COUNTY	FINANCIAL PROJECT ID		
			<b>ILLUSTRATION PURPOSE ONLY</b>	I-4	HILLSBOROUGH	440089-1-52-01		



REVISIONS				STATE OF FLORIDA DEPARTMENT OF TRANSPORTATION			TRUCK PARKING AVAILABILITY SYSTEM HILLSBOROUGH COUNTY, FDOT DISTRICT 7 REST AREA 70251 (34 SPACES) NORTHBOUND MILE MARKER 238	SHEET NO.  IT-03
DATE	DESCRIPTION	DATE	DESCRIPTION	ROAD NO.	COUNTY	FINANCIAL PROJECT ID		
			<b>ILLUSTRATION PURPOSE ONLY</b>	1-75	HILLSBOROUGH	440089-1-52-01		





PARCEL DERIVED R/W LINE

PARCEL DERIVED R/W LINE

I-75 SB

I-75 NB

1 WIRELESS COMMUNICATION DEVICE  
1 ETHERNET SWITCH

1 MULTI POST STATIC SIGN WITH EMBEDDED DMS  
1 MEDIA CONVERTER  
1 POWER PULL BOX

FIBER SPLICE VAULT

- WIRELESS COMMUNICATION TO CONNECT TO REST AREA  
- 200 FT SLACK OF 1-12 STRAND FIBER OPTIC CABLE FOR FUTURE COMMUNICATION CONNECTION

ELECTRIC PULL BOX (TYP.)

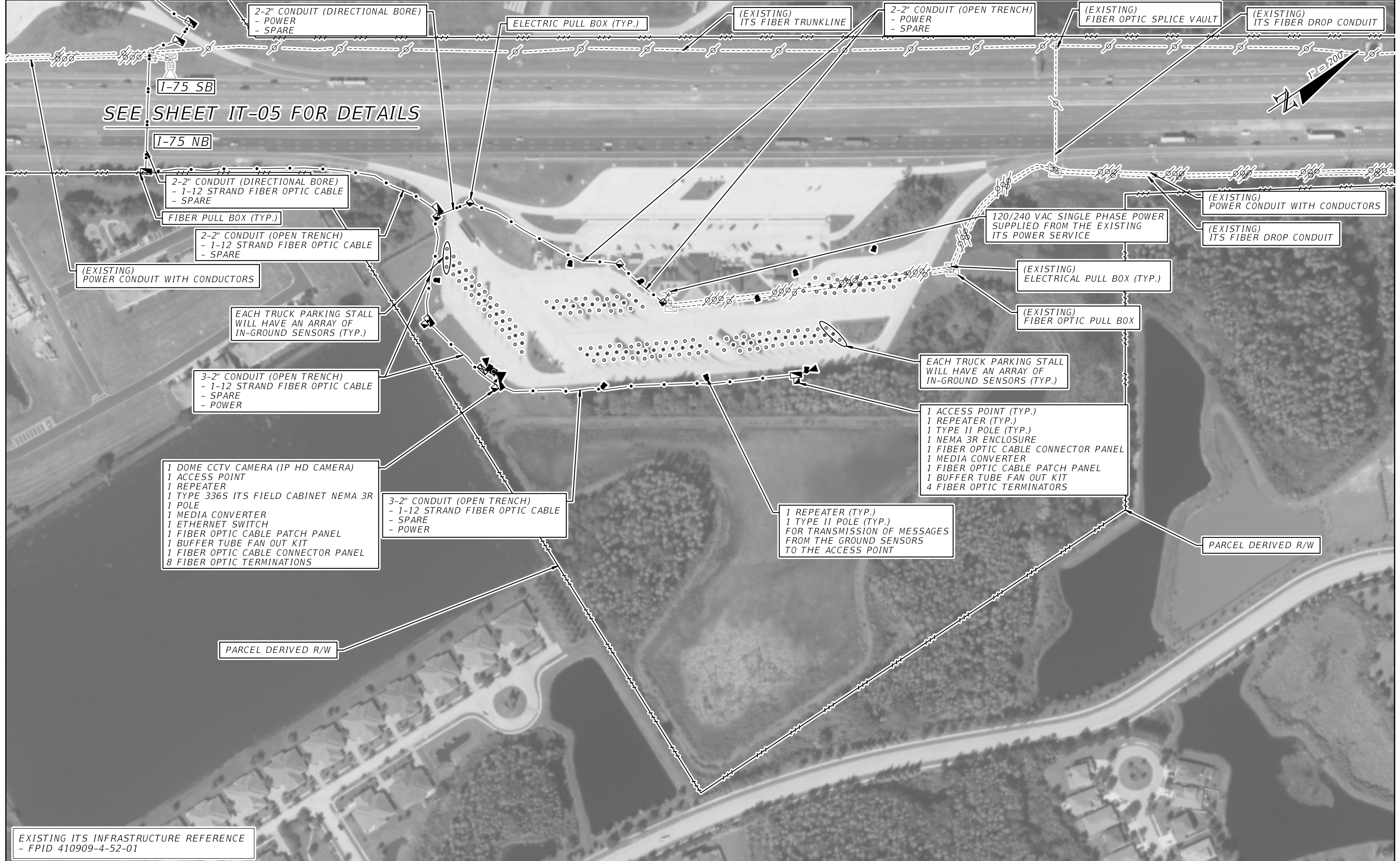
NO FDOT EXISTING ITS INFRASTRUCTURE IS PRESENT AT THIS LOCATION.



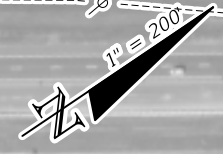
TRUCK PARKING AVAILABILITY SIGN WITH 3-DIGIT EMBEDDED DMS AT NB MM 234.50 SOUTH OF REST AREA 70251 (MM 238) (ADJUST SIGN LOCATION PER MUTCD SIGN SPACING REQUIREMENTS)

- 3-DIGIT EMBEDDED DMS
- SOLAR POWER FOR EMBEDDED DMS
- POLE MOUNTED NEMA CABINET
- WIRELESS COMMUNICATION EQUIPMENT

REVISIONS				STATE OF FLORIDA DEPARTMENT OF TRANSPORTATION			TRUCK PARKING AVAILABILITY SYSTEM HILLSBOROUGH COUNTY, FDOT DISTRICT 7 TPAS SIGN 70251 NORTHBOUND MILE MARKER 234.50		SHEET NO.
DATE	DESCRIPTION	DATE	DESCRIPTION	ROAD NO.	COUNTY	FINANCIAL PROJECT ID			
			<b>ILLUSTRATION PURPOSE ONLY</b>	I-75	HILLSBOROUGH	440089-1-52-01			IT-03A

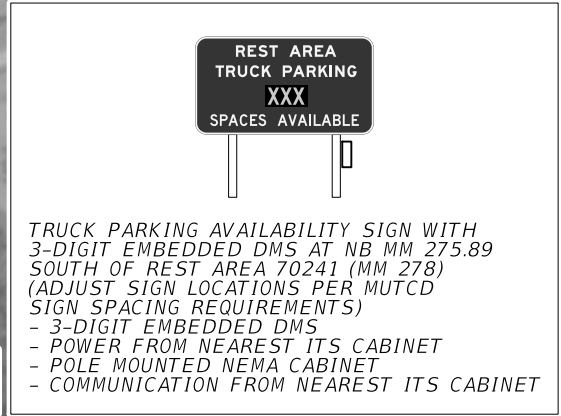


SEE SHEET IT-05 FOR DETAILS

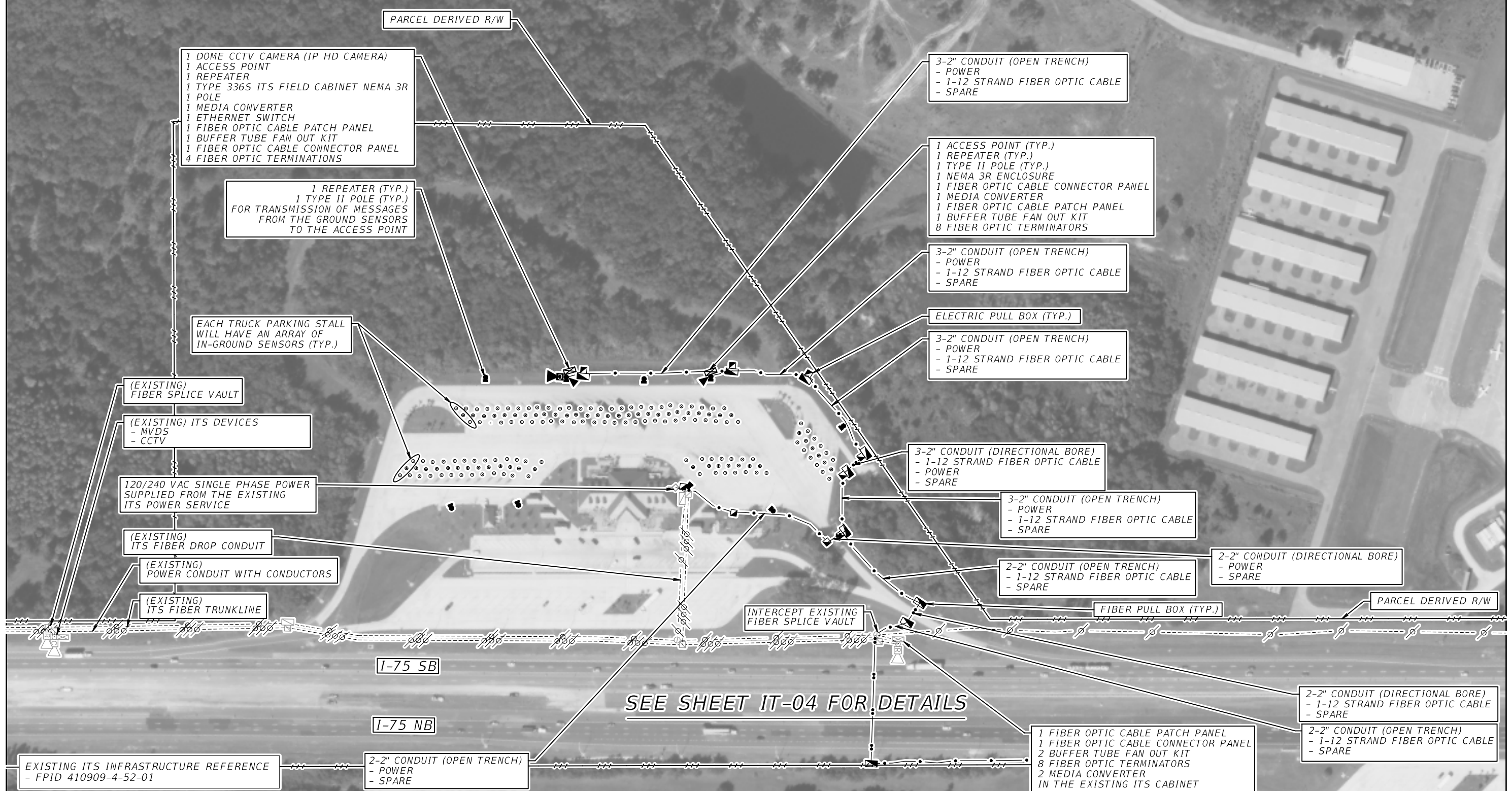


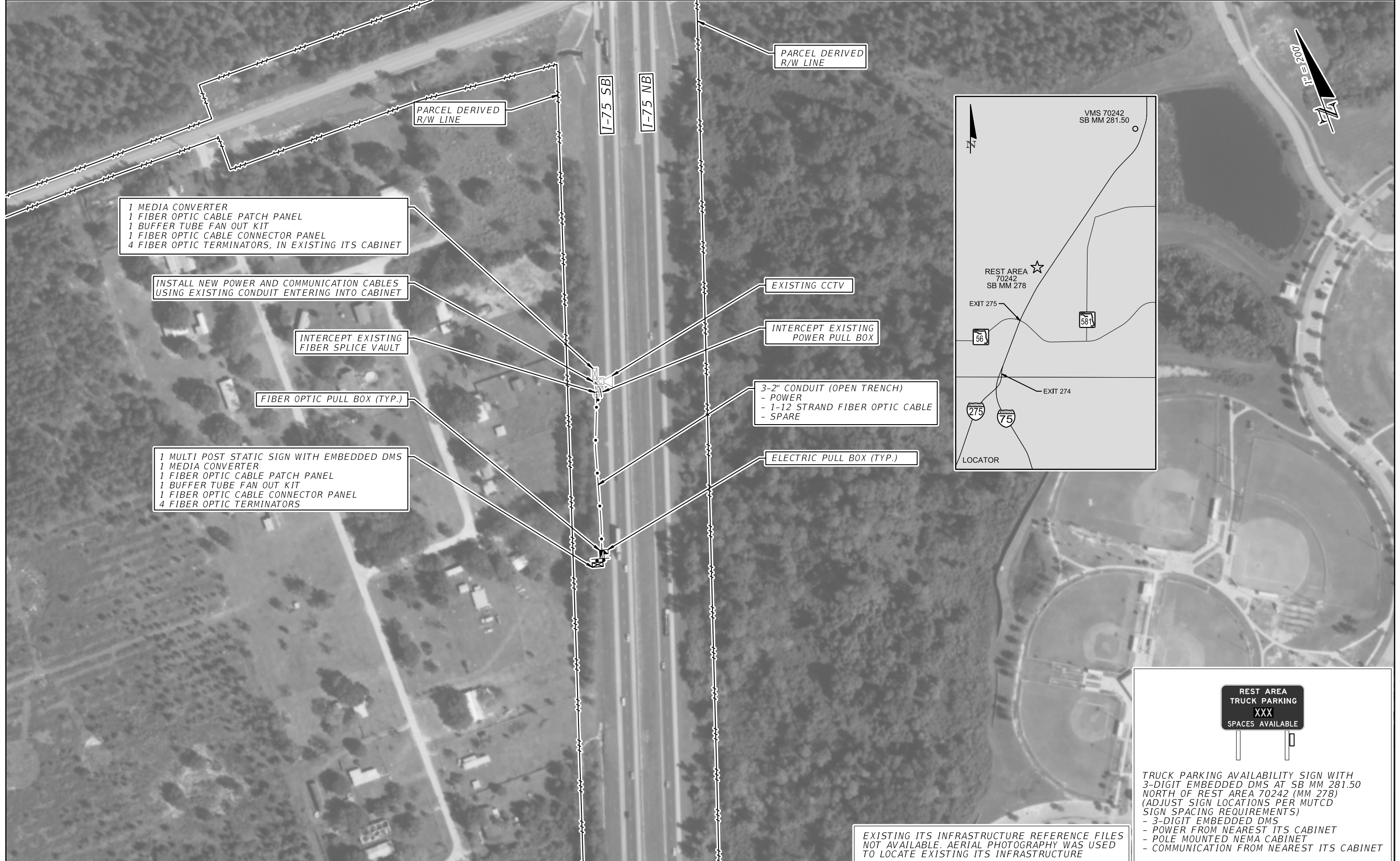
EXISTING ITS INFRASTRUCTURE REFERENCE  
- FPID 410909-4-52-01

REVISIONS				ILLUSTRATION PURPOSE ONLY	STATE OF FLORIDA DEPARTMENT OF TRANSPORTATION			TRUCK PARKING AVAILABILITY SYSTEM PASCO COUNTY, FDOT DISTRICT 7 REST AREA 70241 (57 SPACES) NORTHBOUND MILE MARKER 278	SHEET NO.
DATE	DESCRIPTION	DATE	DESCRIPTION		ROAD NO.	COUNTY	FINANCIAL PROJECT ID		IT-04
						I-75	PASCO		440089-1-52-01



REVISIONS				STATE OF FLORIDA DEPARTMENT OF TRANSPORTATION			TRUCK PARKING AVAILABILITY SYSTEM PASCO COUNTY, FDOT DISTRICT 7 TPAS SIGN 70241 NORTHBOUND MILE MARKER 275.89	SHEET NO.  IT-04A
DATE	DESCRIPTION	DATE	DESCRIPTION	ROAD NO.	COUNTY	FINANCIAL PROJECT ID		
			<b>ILLUSTRATION PURPOSE ONLY</b>	I-75	PASCO	440089-1-52-01		





1 MEDIA CONVERTER  
 1 FIBER OPTIC CABLE PATCH PANEL  
 1 BUFFER TUBE FAN OUT KIT  
 1 FIBER OPTIC CABLE CONNECTOR PANEL  
 4 FIBER OPTIC TERMINATORS, IN EXISTING ITS CABINET

INSTALL NEW POWER AND COMMUNICATION CABLES USING EXISTING CONDUIT ENTERING INTO CABINET

INTERCEPT EXISTING FIBER SPLICE VAULT

FIBER OPTIC PULL BOX (TYP.)

1 MULTI POST STATIC SIGN WITH EMBEDDED DMS  
 1 MEDIA CONVERTER  
 1 FIBER OPTIC CABLE PATCH PANEL  
 1 BUFFER TUBE FAN OUT KIT  
 1 FIBER OPTIC CABLE CONNECTOR PANEL  
 4 FIBER OPTIC TERMINATORS

PARCEL DERIVED R/W LINE

PARCEL DERIVED R/W LINE

I-75 SB

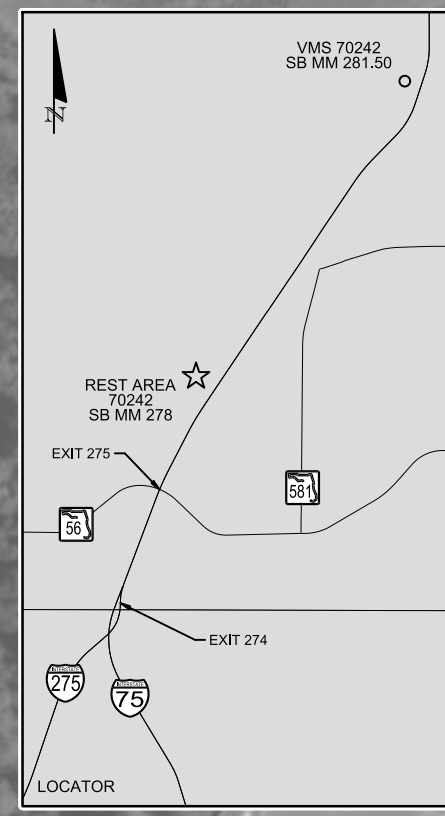
I-75 NB

EXISTING CCTV

INTERCEPT EXISTING POWER PULL BOX

3-2" CONDUIT (OPEN TRENCH)  
 - POWER  
 - 1-12 STRAND FIBER OPTIC CABLE  
 - SPARE

ELECTRIC PULL BOX (TYP.)



TRUCK PARKING AVAILABILITY SIGN WITH 3-DIGIT EMBEDDED DMS AT SB MM 281.50 NORTH OF REST AREA 70242 (MM 278) (ADJUST SIGN LOCATIONS PER MUTCD SIGN SPACING REQUIREMENTS)  
 - 3-DIGIT EMBEDDED DMS  
 - POWER FROM NEAREST ITS CABINET  
 - POLE MOUNTED NEMA CABINET  
 - COMMUNICATION FROM NEAREST ITS CABINET

EXISTING ITS INFRASTRUCTURE REFERENCE FILES NOT AVAILABLE. AERIAL PHOTOGRAPHY WAS USED TO LOCATE EXISTING ITS INFRASTRUCTURE

REVISIONS				STATE OF FLORIDA DEPARTMENT OF TRANSPORTATION			TRUCK PARKING AVAILABILITY SYSTEM PASCO COUNTY, FDOT DISTRICT 7 TPAS SIGN 70242 SOUTHBOUND MILE MARKER 281.50	SHEET NO.  IT-05A
DATE	DESCRIPTION	DATE	DESCRIPTION	ROAD NO.	COUNTY	FINANCIAL PROJECT ID		
			<b>ILLUSTRATION PURPOSE ONLY</b>	I-75	PASCO	440089-1-52-01		