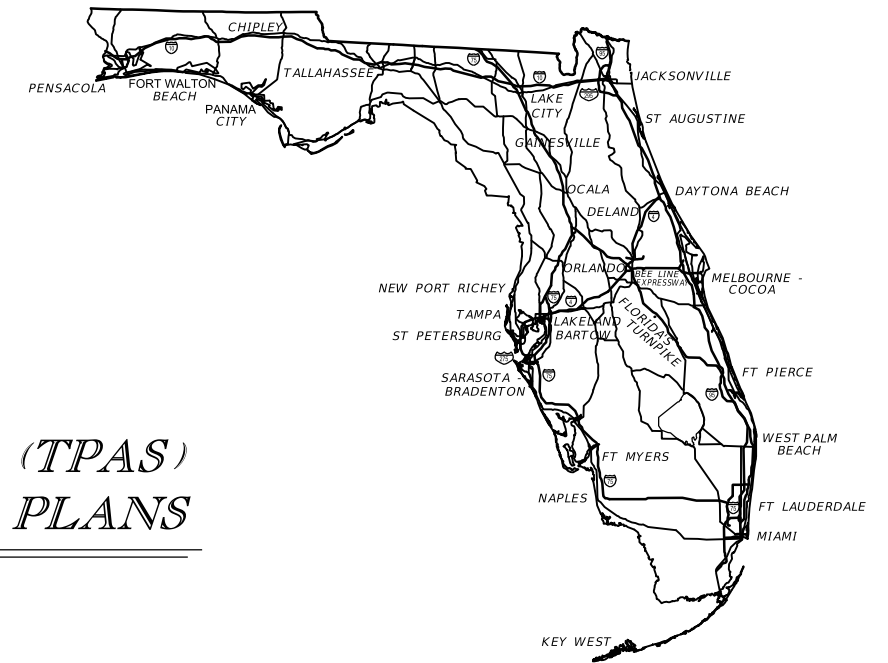


STATE OF FLORIDA
DEPARTMENT OF TRANSPORTATION

CONTRACT PLANS

FINANCIAL PROJECT ID 438096-1-52-01
(FEDERAL FUNDS)



INDEX OF TPAS PLANS

SHEET NO.	SHEET DESCRIPTION
1	KEY SHEET
2	GENERAL NOTES
3	GUIDESIGN WORKSHEET
IT-01 TO IT-06A	ITS PLAN SHEETS

TRUCK PARKING AVAILABILITY SYSTEMS (TPAS)
INTELLIGENT TRANSPORTATION SYSTEM PLANS



GOVERNING STANDARDS AND SPECIFICATIONS:
Florida Department of Transportation, 2016 Design Standards and revised Index Drawings as appended herein, and 2016 Standard Specifications for Road and Bridge Construction, as amended by Contract Documents.

For Design Standards click on the "Design Standards" link at the following web site:
<http://www.dot.state.fl.us/rddesign/DesignStandards>

For the Standard Specifications for Road and Bridge Construction click on the "Specifications" link at the following web site:
<http://www.dot.state.fl.us/specificationsoffice/StandardSpecifications>

NOTE: THE SCALE OF THESE PLANS MAY HAVE CHANGED DUE TO REPRODUCTION.

KEY SHEET REVISIONS	
DATE	DESCRIPTION

FISCAL YEAR	SHEET NO.
15	1

GENERAL NOTES

1. THE LOCATION(S) OF THE UTILITIES SHOWN IN THE PLANS ARE BASED ON LIMITED INVESTIGATION TECHNIQUES, AND MARK-UPS FROM UTILITY OWNERS. ALL UTILITIES SHOULD BE CONSIDERED APPROXIMATE ONLY.
2. THE CONTRACTOR SHALL NOTIFY UTILITY OWNERS LISTED THROUGH SUNSHINE STATE ONE CALL OF FLORIDA (811) TWO BUSINESS DAYS IN ADVANCE OF BEGINNING CONSTRUCTION ON THE JOB SITE.
3. FIBER OPTIC AND POWER PULL BOXES AND CONDUIT SHALL BE LOCATED WITHIN 100 FEET OF THE DEVICE THEY SUPPORT. ITS DEVICE LOCATIONS ARE APPROXIMATE AND MAY REQUIRE RELOCATION BY THE PROJECT ENGINEER. IF DEVICE RELOCATIONS OCCUR FOR ANY REASON, THE PULL BOXES AND CONDUIT SUPPORTING THAT DEVICE SHALL BE RELOCATED AND/OR EXTENDED.
4. INSTALL FIBER OPTIC CONDUIT FOR COMMUNICATION TO DEVICES AS SHOWN IN THE PLANS AND IN ACCORDANCE WITH ALL FDOT STANDARDS FOR CONDUIT INSTALLATION.
5. THE CONTRACTOR SHALL BE RESPONSIBLE FOR FURNISHING AND INSTALLING ABOVE GROUND TUBULAR ROUTE MARKERS PER SECTION 630 OF THE FDOT STANDARD SPECIFICATIONS. MARKERS SHALL BE PLACED AT A MAXIMUM OF 500 FEET AND AT EVERY PULL AND SPLICE BOX. A MARKER LABEL TEMPLATE SHALL BE PROVIDED FOR REVIEW.
6. THE CONDUIT SHALL BE SEALED WITH THE SPECIFIED DUCT PLUG AT THE TIME OF CONDUIT INSTALLATION AND AFTER FINAL FIBER INSTALLATION.
7. ELECTRICAL POWER SERVICE METERS SHALL HAVE A SEPARATE BREAKER FOR EACH ITS CIRCUIT.
8. THE CONTRACTOR SHALL HAND DIG (SOFT DIG) TO A DEPTH OF FOUR (4) FEET WHERE UTILITIES ARE IN CONFLICT PRIOR TO USE OF A MECHANICAL AUGER. ANY POTENTIAL CONFLICTS SHALL BE REPORTED TO THE PROJECT ENGINEER IMMEDIATELY.

UTILITY OWNERS

AT&T Distribution
DINO FARRUGGIO
561-997-0240
df@att.com

AT&T
GREG JACOBSON
813-342-0512
gj1529@att.com

BREVARD COUNTY
ROY HAWTHORNE
roy.hawthorne@brevardcounty.us

BRIGHT HOUSE
MARVIN USRY JR
407-532-8509
marvin.usry@mybriighthouse.com

CENTURY LINK
MARLON BROWN
407-830-3359
marlon.n.brown@centurylink.com

CITY OF ALTAMONTE SPRINGS
FRANKLIN CABRERA
407-571-8044
frcabrera@altamonte.org

CITY OF LAKE MARY
TOM CONNELLY/Daniel Koury
407-585-1412
dkoury@lakemaryfl.com

CITY OF PALM BAY UTILITIES
EMANUEL ODIES
321-952-3410 X7010
emanuel.odes@palmabayflorida.org

CITY OF PALM COAST UTILITY DEPT
CHRIS JOHNSON
386-986-2354
cjohnson@palmcoastgov.com

COMCAST CABLE COMMUNICATIONS INC
LIAM MCKENNA
904-380-7574
liam_mckenna@cable.comcast.com

DUKE ENERGY
SHARON DEAR
407-905-3321
sharon.dear@duke-energy.com

FL GAS TRANS MELBOURNE
JOSEPH SANCHEZ
321-243-4073
joseph.e.sanchez@energytransfer.com

FLORIDA GAS TRANSMISSION - FT PIERCE
JOSEPH SANCHEZ
2405 LUCIEN WAY SUITE 200 MAITLAND, FL 32751
407-838-7171
joseph.e.sanchez@energytransfer.com

FLORIDA POWER & LIGHT - ST JOHNS/NASSAU
/MARTIN/ST LUCIE/BREVARD/FLAGLER
TRACY STERN
386-329-5152
tracy.stern@fpl.com

FPL FIBERNET
DANNY HASKETT
9250 W. FLAGLER STREET, FN/GO MIAMI, FL 33174
786-246-7827
305-552-2931
danny.haskett@fpl.com

SEMINOLE COUNTY
KYLE BECHTELHEIMER
407-665-2021
kbechtelheimer@seminolecountyfl.gov

TRANSCORE
TUSHAR PATEL
386-943-5315
tushar.patel@dot.state.fl.us

FDOT District 5
SCOTT KIRTS
2400 Camp Road M.S. 593 Oviedo, FL 32765
407-249-4275
scott.kirts@dot.state.fl.us

AL NEUMANN
386-740-3466

UTILITY OWNERS (CONTINUED)

HOTWIRE COMMUNICATION
WALTER SANCHO-DAVILA
954-248-7396
walter.sancho-davila@hotwirecommunication.com

QWEST
GEORGE MCELVAIN
1801 CALIFORNIA STREET,
FL 26 DENVER, CO 80202-2642
800-283-4237
george.mcelvain@qwest.com

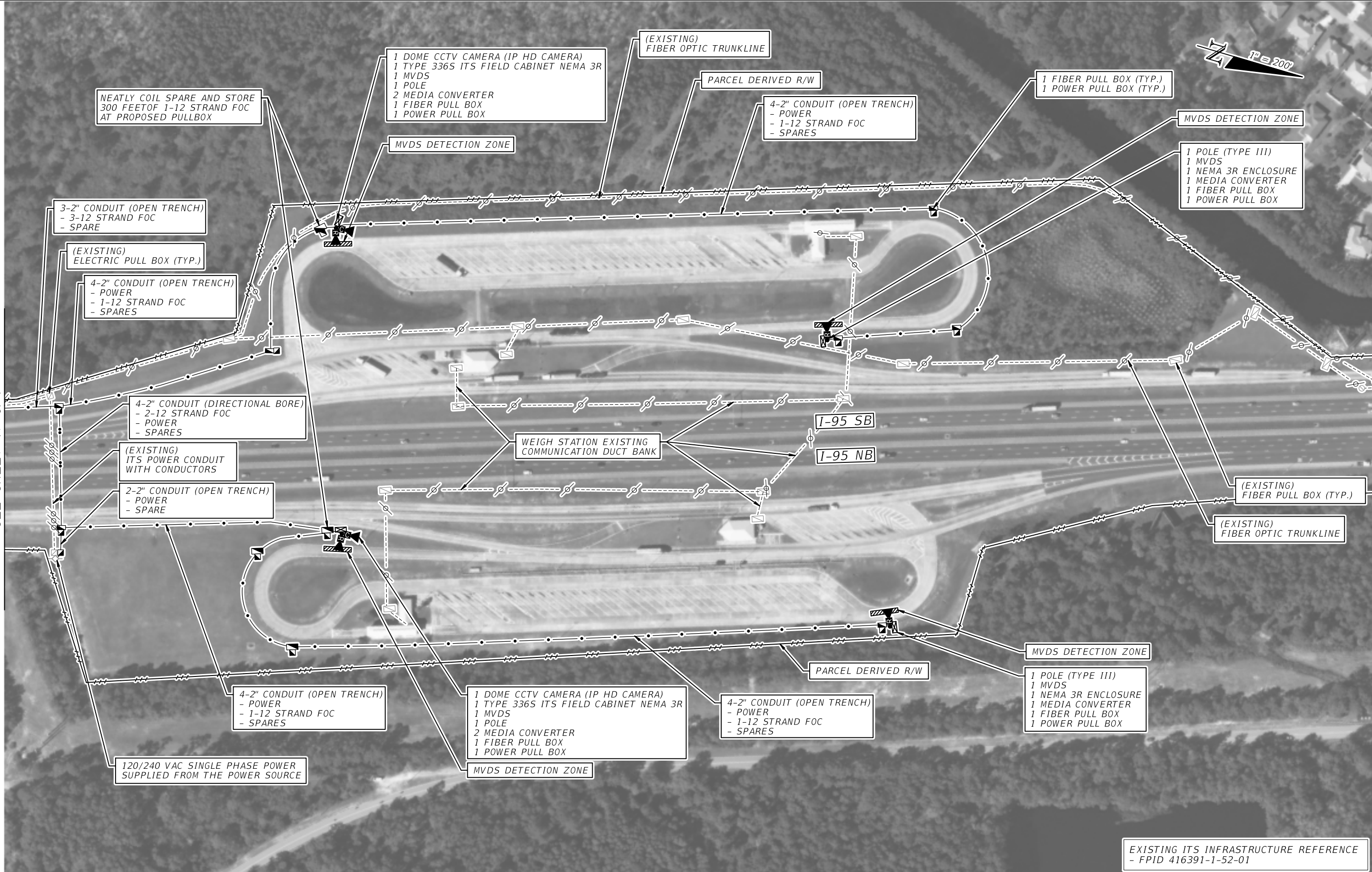
SANLANDO UTILITY INC
800-272-1919
sawatler@uiwater.com

LEGEND

EXISTING	PROPOSED	
	⊙ ⊙ ⊙	GROUND SENSORS
	■	REPEATER
	◀	ACCESS POINT
	▨	DETECTION ZONE
		CCTV WITH POLE
		MVDS
		MULTI-POST STATIC SIGN WITH EMBEDDED DMS
		BASE MOUNT CABINET
		POLE MOUNT CABINET
		PULL BOX
		FIBER OPTIC PULL BOX
		SPLICE VAULT
		POWER SERVICE
	●	POLE
		DMS
	— ● —	CONDUIT, OPEN TRENCH
	— ●● —	CONDUIT, DIRECTIONAL BORE
	--- ∅ ---	FIBER OPTIC RUN
	--- ∅∅ ---	POWER RUN

REVISIONS				STATE OF FLORIDA DEPARTMENT OF TRANSPORTATION	SHEET NO.
DATE	DESCRIPTION	DATE	DESCRIPTION		
				VARIES VARIES 438096-1-52-01	2

MATCH LINE
SEE SHEET IT-01-1



NEATLY COIL SPARE AND STORE
300 FEET OF 1-12 STRAND FOC
AT PROPOSED PULLBOX

1 DOME CCTV CAMERA (IP HD CAMERA)
1 TYPE 336S ITS FIELD CABINET NEMA 3R
1 MVDS
1 POLE
2 MEDIA CONVERTER
1 FIBER PULL BOX
1 POWER PULL BOX

(EXISTING)
FIBER OPTIC TRUNKLINE

PARCEL DERIVED R/W

4-2" CONDUIT (OPEN TRENCH)
- POWER
- 1-12 STRAND FOC
- SPARES

1 FIBER PULL BOX (TYP.)
1 POWER PULL BOX (TYP.)

MVDS DETECTION ZONE

1 POLE (TYPE III)
1 MVDS
1 NEMA 3R ENCLOSURE
1 MEDIA CONVERTER
1 FIBER PULL BOX
1 POWER PULL BOX

3-2" CONDUIT (OPEN TRENCH)
- 3-12 STRAND FOC
- SPARE

(EXISTING)
ELECTRIC PULL BOX (TYP.)

4-2" CONDUIT (OPEN TRENCH)
- POWER
- 1-12 STRAND FOC
- SPARES

4-2" CONDUIT (DIRECTIONAL BORE)
- 2-12 STRAND FOC
- POWER
- SPARES

(EXISTING)
ITS POWER CONDUIT
WITH CONDUCTORS

2-2" CONDUIT (OPEN TRENCH)
- POWER
- SPARE

WEIGH STATION EXISTING
COMMUNICATION DUCT BANK

I-95 SB

I-95 NB

(EXISTING)
FIBER PULL BOX (TYP.)

(EXISTING)
FIBER OPTIC TRUNKLINE

MVDS DETECTION ZONE

PARCEL DERIVED R/W

4-2" CONDUIT (OPEN TRENCH)
- POWER
- 1-12 STRAND FOC
- SPARES

1 DOME CCTV CAMERA (IP HD CAMERA)
1 TYPE 336S ITS FIELD CABINET NEMA 3R
1 MVDS
1 POLE
2 MEDIA CONVERTER
1 FIBER PULL BOX
1 POWER PULL BOX

4-2" CONDUIT (OPEN TRENCH)
- POWER
- 1-12 STRAND FOC
- SPARES

1 POLE (TYPE III)
1 MVDS
1 NEMA 3R ENCLOSURE
1 MEDIA CONVERTER
1 FIBER PULL BOX
1 POWER PULL BOX

120/240 VAC SINGLE PHASE POWER
SUPPLIED FROM THE POWER SOURCE

MVDS DETECTION ZONE

EXISTING ITS INFRASTRUCTURE REFERENCE
- FPID 416391-1-52-01

REVISIONS				STATE OF FLORIDA DEPARTMENT OF TRANSPORTATION	TRUCK PARKING AVAILABILITY SYSTEM FLAGLER COUNTY, FDOT DISTRICT 5 WEIGH STATION 50671 (33 SPACES) NORTHBOUND MILE MARKER 286 WEIGH STATION 50672 (33 SPACES) SOUTHBOUND MILE MARKER 286	SHEET NO. IT-01
DATE	DESCRIPTION	DATE	DESCRIPTION			



NEATLY COIL AND STORE 2- 12 STRAND FOC (100 FT EACH) AT EXISTING SPLICE VAULT ORIGINATING FROM PULL BOX NEAR EACH PROPOSED CCTV

INTERCEPT EXISTING FIBER SPLICE VAULT

INSTALL NEW COMMUNICATION CABLE USING EXISTING CONDUIT ENTERING INTO EXISTING CABINET

1 MEDIA CONVERTER IN THE EXISTING ITS CABINET

(EXISTING) FIBER SPLICE VAULT

PARCEL DERIVED R/W

FIBER PULL BOX (TYP)

3 -2" CONDUIT (OPEN TRENCH)
3 - 12 STRAND FOC
SPARE

(EXISTING) ELECTRICAL PULL BOX (TYP.)

I-95 SB

I-95 NB

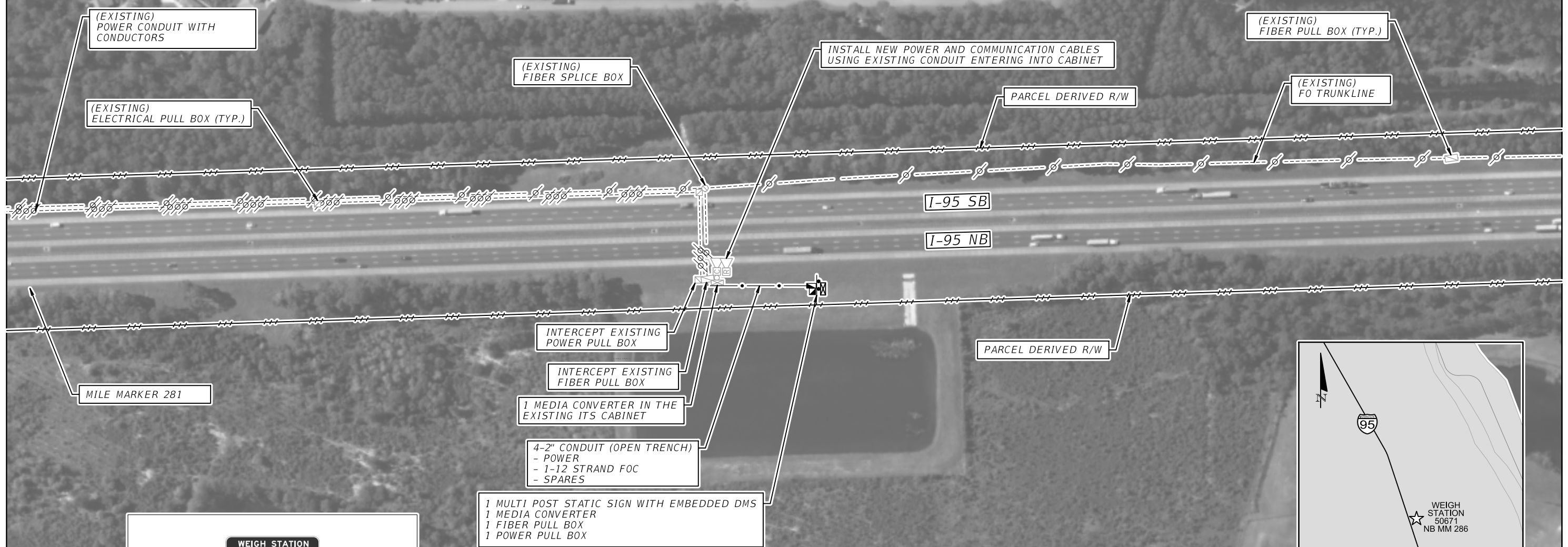
PARCEL DERIVED R/W

(EXISTING) ITS DEVICES
- MVDS
- CCTV

MATCH LINE
SEE SHEET IT-01

EXISTING ITS INFRASTRUCTURE REFERENCE
- FPID 416391-1-52-01

REVISIONS				STATE OF FLORIDA DEPARTMENT OF TRANSPORTATION			TRUCK PARKING AVAILABILITY SYSTEM FLAGLER COUNTY, FDOT DISTRICT 5 WEIGH STATION 50671 (33 SPACES) NORTHBOUND MILE MARKER 286 WEIGH STATION 50672 (33 SPACES) SOUTHBOUND MILE MARKER 286	SHEET NO. IT-01-1
DATE	DESCRIPTION	DATE	DESCRIPTION	ROAD NO.	COUNTY	FINANCIAL PROJECT ID		
				I-95	FLAGLER	438096-1-52-01		



MILE MARKER 281

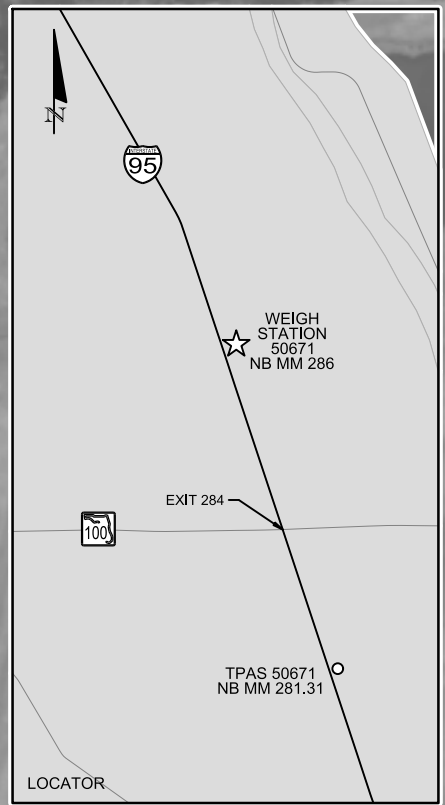
TRUCK PARKING AVAILABILITY SIGN WITH 3-DIGIT EMBEDDED DMS AT NB MM 281.31 SOUTH OF WEIGH STATION (MM 286) (ADJUST SIGN LOCATIONS PER MUTCD SIGN SPACING REQUIREMENTS)

- 3-DIGIT EMBEDDED DMS
- POWER FROM NEAREST ITS CABINET
- POLE MOUNTED NEMA CABINET
- COMMUNICATION FROM NEAREST ITS CABINET

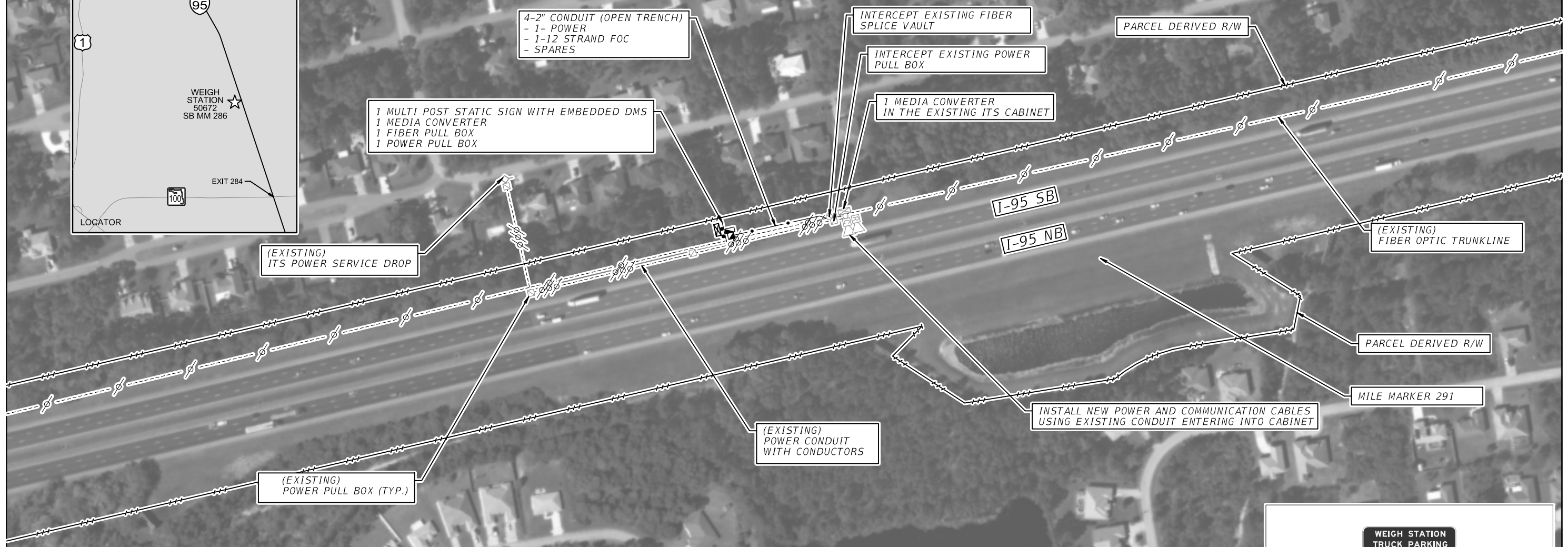
- 1 MULTI POST STATIC SIGN WITH EMBEDDED DMS
- 1 MEDIA CONVERTER
- 1 FIBER PULL BOX
- 1 POWER PULL BOX

PARCEL DERIVED R/W

EXISTING ITS INFRASTRUCTURE REFERENCE
- FPID 416391-1-52-01



REVISIONS				STATE OF FLORIDA DEPARTMENT OF TRANSPORTATION			TRUCK PARKING AVAILABILITY SYSTEM FLAGLER COUNTY, FDOT DISTRICT 5 TPAS SIGN 50671 NORTHBOUND MILE MARKER 281.31	SHEET NO.
DATE	DESCRIPTION	DATE	DESCRIPTION	ROAD NO.	COUNTY	FINANCIAL PROJECT ID		IT-01A
				I-95	FLAGLER	438096-1-52-01		

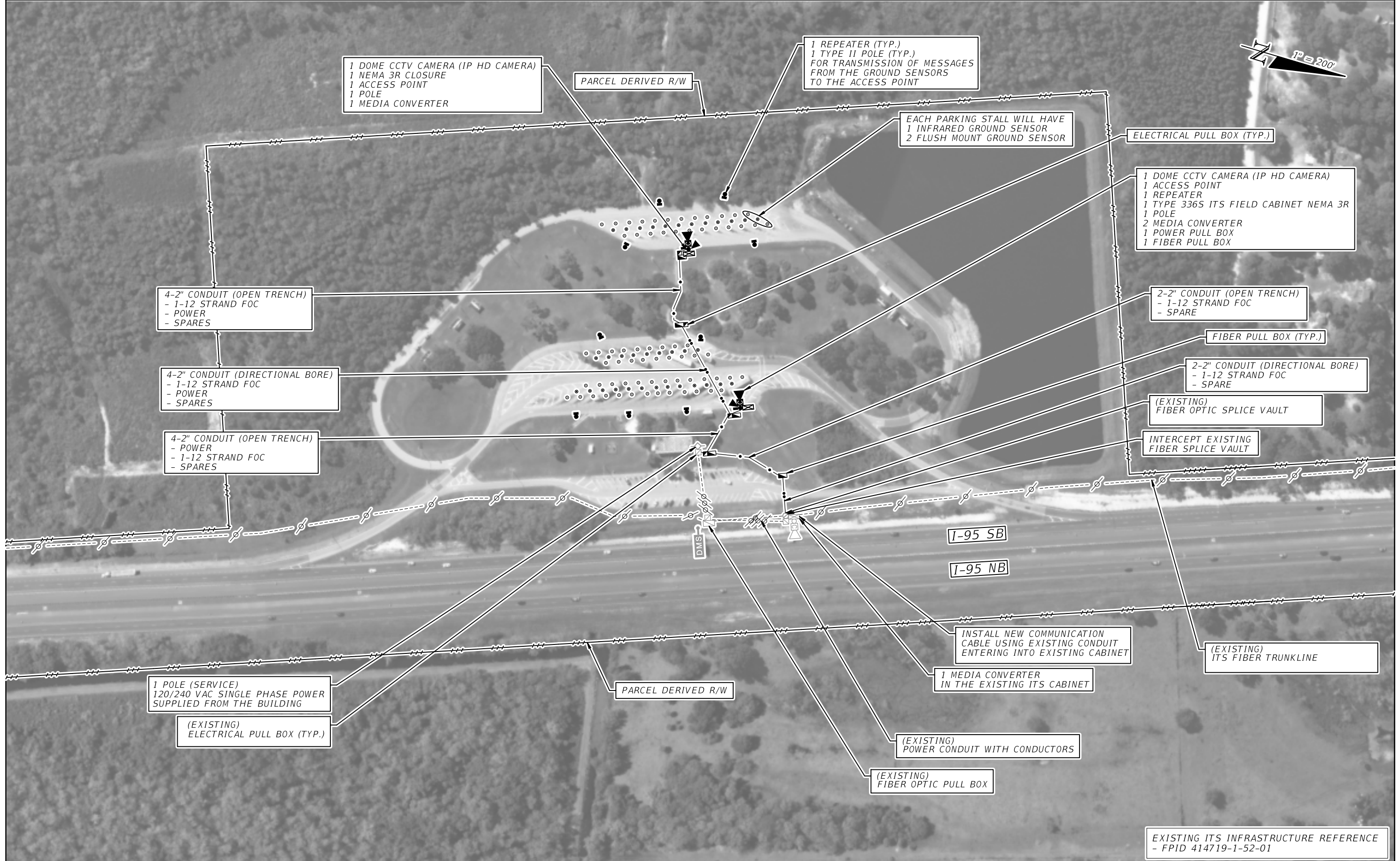


TRUCK PARKING AVAILABILITY SIGN WITH 3-DIGIT EMBEDDED DMS AT SB MM 290.87 NORTH OF WEIGH STATION (MM 286) (ADJUST SIGN LOCATIONS PER MUTCD SIGN SPACING REQUIREMENTS)

- 3-DIGIT EMBEDDED DMS
- POWER FROM NEAREST ITS CABINET
- POLE MOUNTED NEMA CABINET
- COMMUNICATION FROM NEAREST ITS CABINET

EXISTING ITS INFRASTRUCTURE REFERENCE - FPID 416391-1-52-01

REVISIONS				STATE OF FLORIDA DEPARTMENT OF TRANSPORTATION	TRUCK PARKING AVAILABILITY SYSTEM FLAGLER COUNTY, FDOT DISTRICT 5 TPAS SIGN 50672 SOUTHBOUND MILE MARKER 290.87	SHEET NO. IT-01B
DATE	DESCRIPTION	DATE	DESCRIPTION			
				I-95 FLAGLER 438096-1-52-01		



1 DOME CCTV CAMERA (IP HD CAMERA)
 1 NEMA 3R CLOSURE
 1 ACCESS POINT
 1 POLE
 1 MEDIA CONVERTER

PARCEL DERIVED R/W

1 REPEATER (TYP.)
 1 TYPE II POLE (TYP.)
 FOR TRANSMISSION OF MESSAGES
 FROM THE GROUND SENSORS
 TO THE ACCESS POINT

EACH PARKING STALL WILL HAVE
 1 INFRARED GROUND SENSOR
 2 FLUSH MOUNT GROUND SENSOR

ELECTRICAL PULL BOX (TYP.)

1 DOME CCTV CAMERA (IP HD CAMERA)
 1 ACCESS POINT
 1 REPEATER
 1 TYPE 336S ITS FIELD CABINET NEMA 3R
 1 POLE
 2 MEDIA CONVERTER
 1 POWER PULL BOX
 1 FIBER PULL BOX

4-2" CONDUIT (OPEN TRENCH)
 - 1-12 STRAND FOC
 - POWER
 - SPARES

2-2" CONDUIT (OPEN TRENCH)
 - 1-12 STRAND FOC
 - SPARE

4-2" CONDUIT (DIRECTIONAL BORE)
 - 1-12 STRAND FOC
 - POWER
 - SPARES

FIBER PULL BOX (TYP.)

2-2" CONDUIT (DIRECTIONAL BORE)
 - 1-12 STRAND FOC
 - SPARE

4-2" CONDUIT (OPEN TRENCH)
 - POWER
 - 1-12 STRAND FOC
 - SPARES

(EXISTING)
 FIBER OPTIC SPLICE VAULT

INTERCEPT EXISTING
 FIBER SPLICE VAULT

I-95 SB

I-95 NB

INSTALL NEW COMMUNICATION
 CABLE USING EXISTING CONDUIT
 ENTERING INTO EXISTING CABINET

(EXISTING)
 ITS FIBER TRUNKLINE

1 POLE (SERVICE)
 120/240 VAC SINGLE PHASE POWER
 SUPPLIED FROM THE BUILDING

PARCEL DERIVED R/W

1 MEDIA CONVERTER
 IN THE EXISTING ITS CABINET

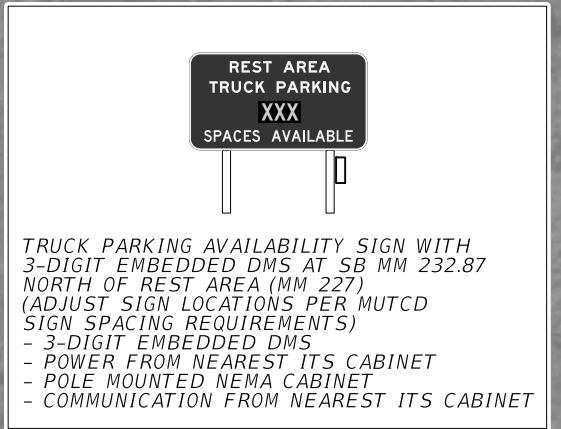
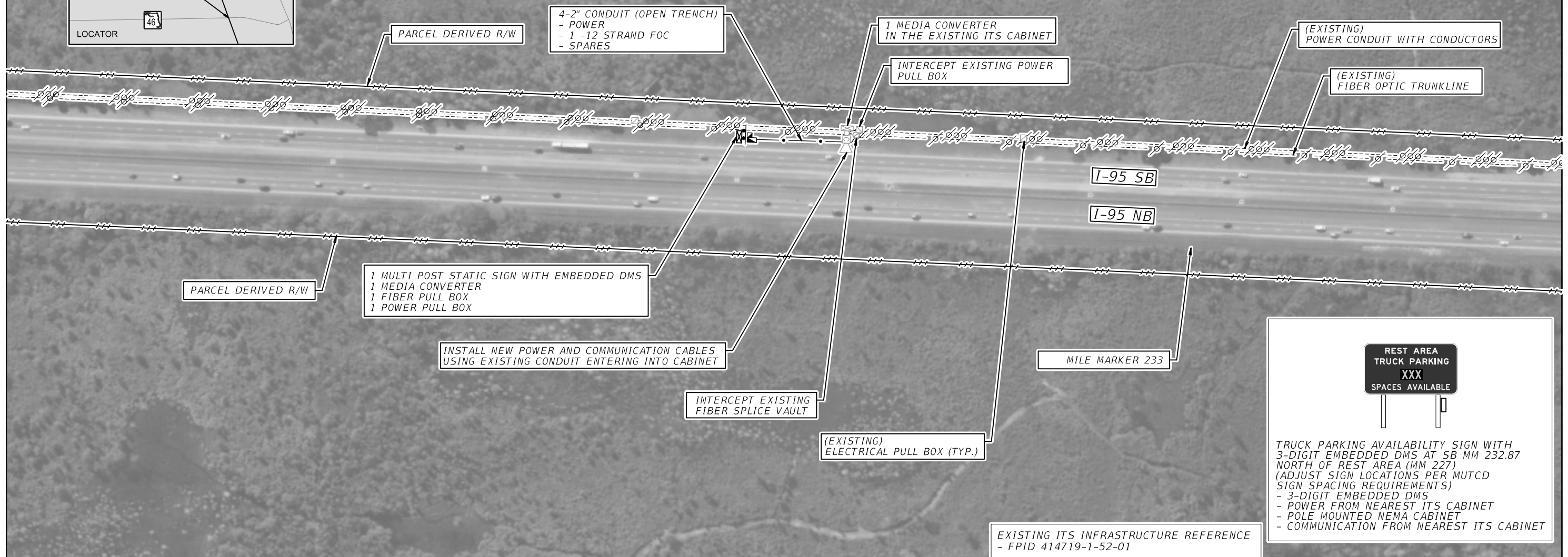
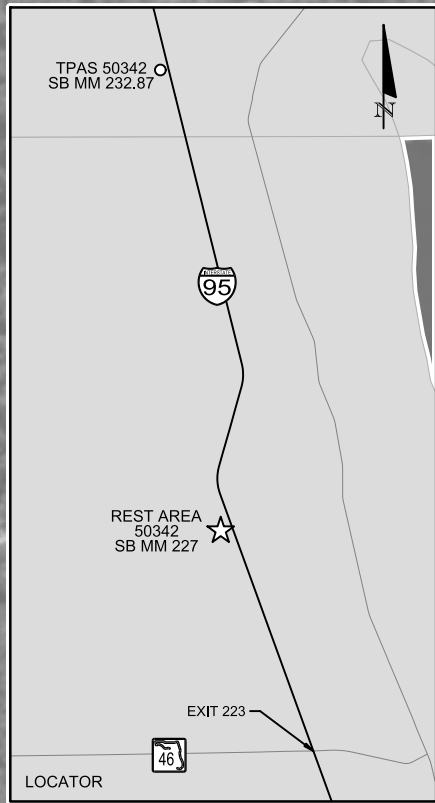
(EXISTING)
 ELECTRICAL PULL BOX (TYP.)

(EXISTING)
 POWER CONDUIT WITH CONDUCTORS

(EXISTING)
 FIBER OPTIC PULL BOX

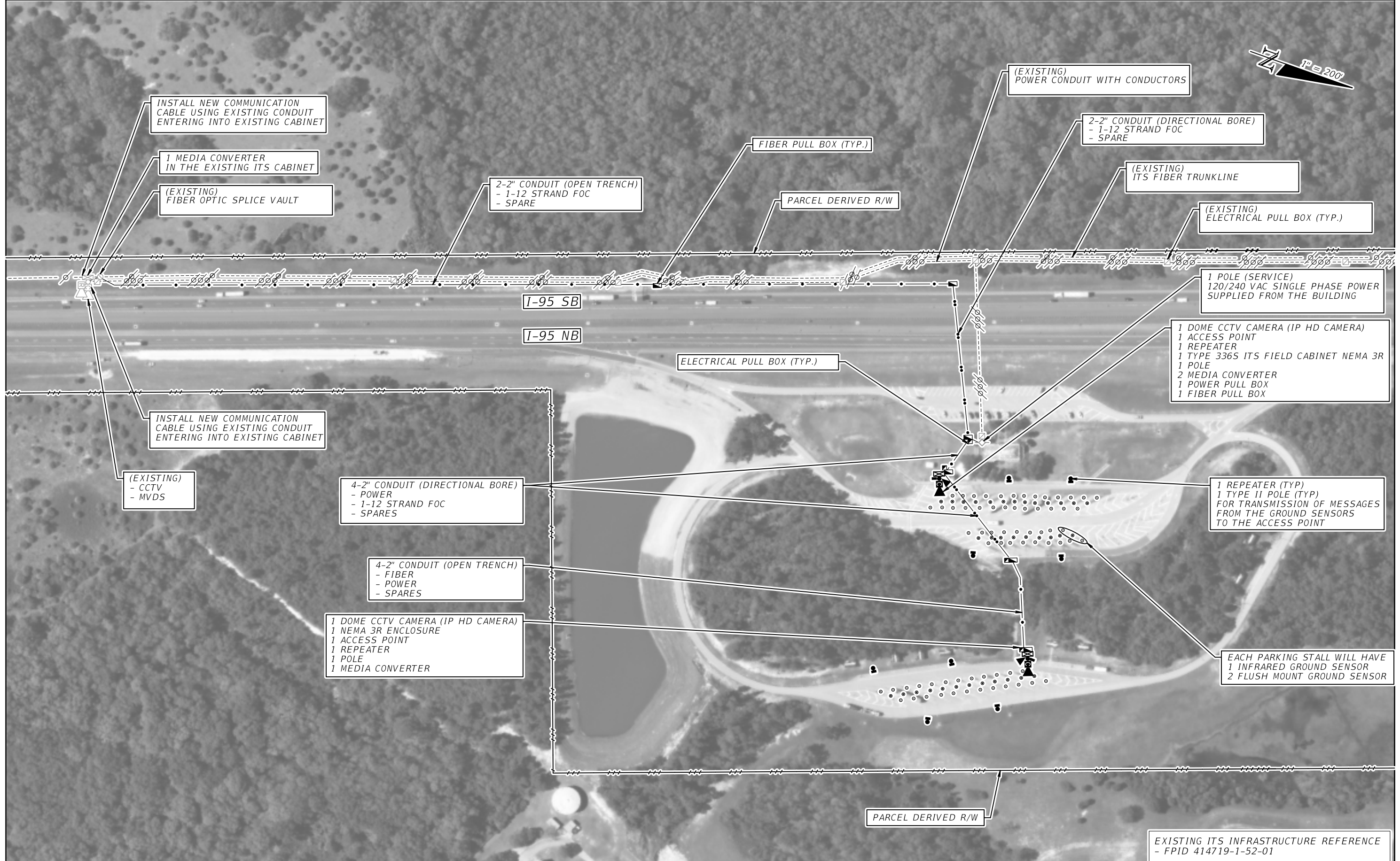
EXISTING ITS INFRASTRUCTURE REFERENCE
 - FPID 414719-1-52-01

REVISIONS				STATE OF FLORIDA DEPARTMENT OF TRANSPORTATION	TRUCK PARKING AVAILABILITY SYSTEM BREVARD COUNTY, FDOT DISTRICT 5 REST AREA 50342 (34 SPACES) SOUTHBOUND MILE MARKER 227	SHEET NO. IT-02
DATE	DESCRIPTION	DATE	DESCRIPTION			

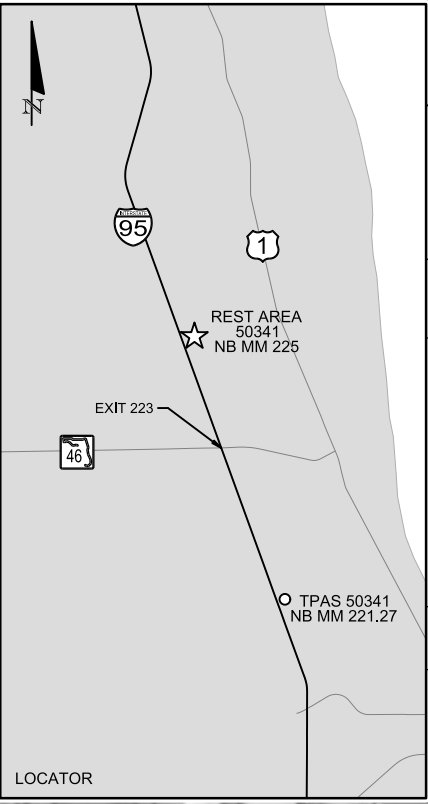


EXISTING ITS INFRASTRUCTURE REFERENCE
- FPID 414719-1-52-01

REVISIONS				STATE OF FLORIDA DEPARTMENT OF TRANSPORTATION	TRUCK PARKING AVAILABILITY SYSTEM VOLUSIA COUNTY, FDOT DISTRICT 5 TPAS SIGN 50342 SOUTHBOUND MILE MARKER 232.87	SHEET NO. IT-02A
DATE	DESCRIPTION	DATE	DESCRIPTION			



REVISIONS				STATE OF FLORIDA DEPARTMENT OF TRANSPORTATION	TRUCK PARKING AVAILABILITY SYSTEM BREVARD COUNTY, FDOT DISTRICT 5 REST AREA 50341 (33 SPACES) NORTHBOUND MILE MARKER 225	SHEET NO. IT-03
DATE	DESCRIPTION	DATE	DESCRIPTION			



REST AREA TRUCK PARKING XXX SPACES AVAILABLE

TRUCK PARKING AVAILABILITY SIGN WITH 3-DIGIT EMBEDDED DMS AT NB MM 221.27 SOUTH OF REST AREA (MM 225) (ADJUST SIGN LOCATION PER MUTCD SIGN SPACING REQUIREMENTS)

- 3-DIGIT EMBEDDED DMS
- POWER FROM NEAREST ITS CABINET
- POLE MOUNTED NEMA CABINET
- COMMUNICATION FROM NEAREST ITS CABINET

REVISIONS			
DATE	DESCRIPTION	DATE	DESCRIPTION

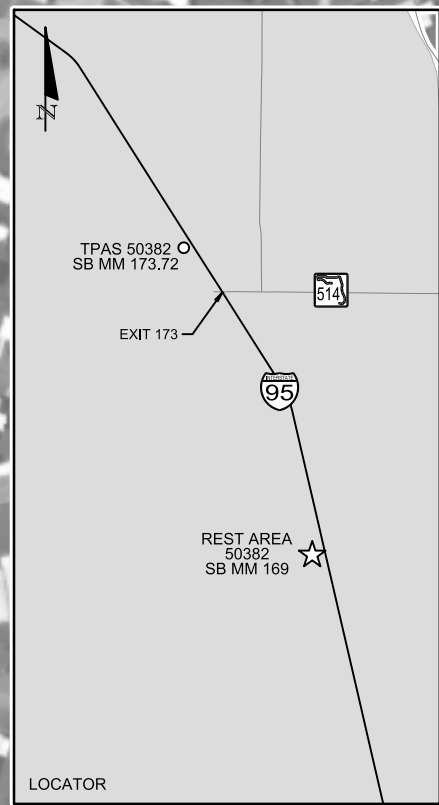
STATE OF FLORIDA DEPARTMENT OF TRANSPORTATION		
ROAD NO.	COUNTY	FINANCIAL PROJECT ID
1-95	BREVARD	438096-1-52-01

TRUCK PARKING AVAILABILITY SYSTEM
BREVARD COUNTY, FDOT DISTRICT 5
TPAS SIGN 50341
NORTHBOUND MILE MARKER 221.27

SHEET NO.
IT-03A



REVISIONS					STATE OF FLORIDA DEPARTMENT OF TRANSPORTATION			TRUCK PARKING AVAILABILITY SYSTEM BREVARD COUNTY, FDOT DISTRICT 5 REST AREA 50382 (68 SPACES) SOUTHBOUND MILE MARKER 169	SHEET NO. IT-04
DATE	DESCRIPTION	DATE	DESCRIPTION		ROAD NO.	COUNTY	FINANCIAL PROJECT ID		
					I-95	BREVARD	438096-1-52-01		

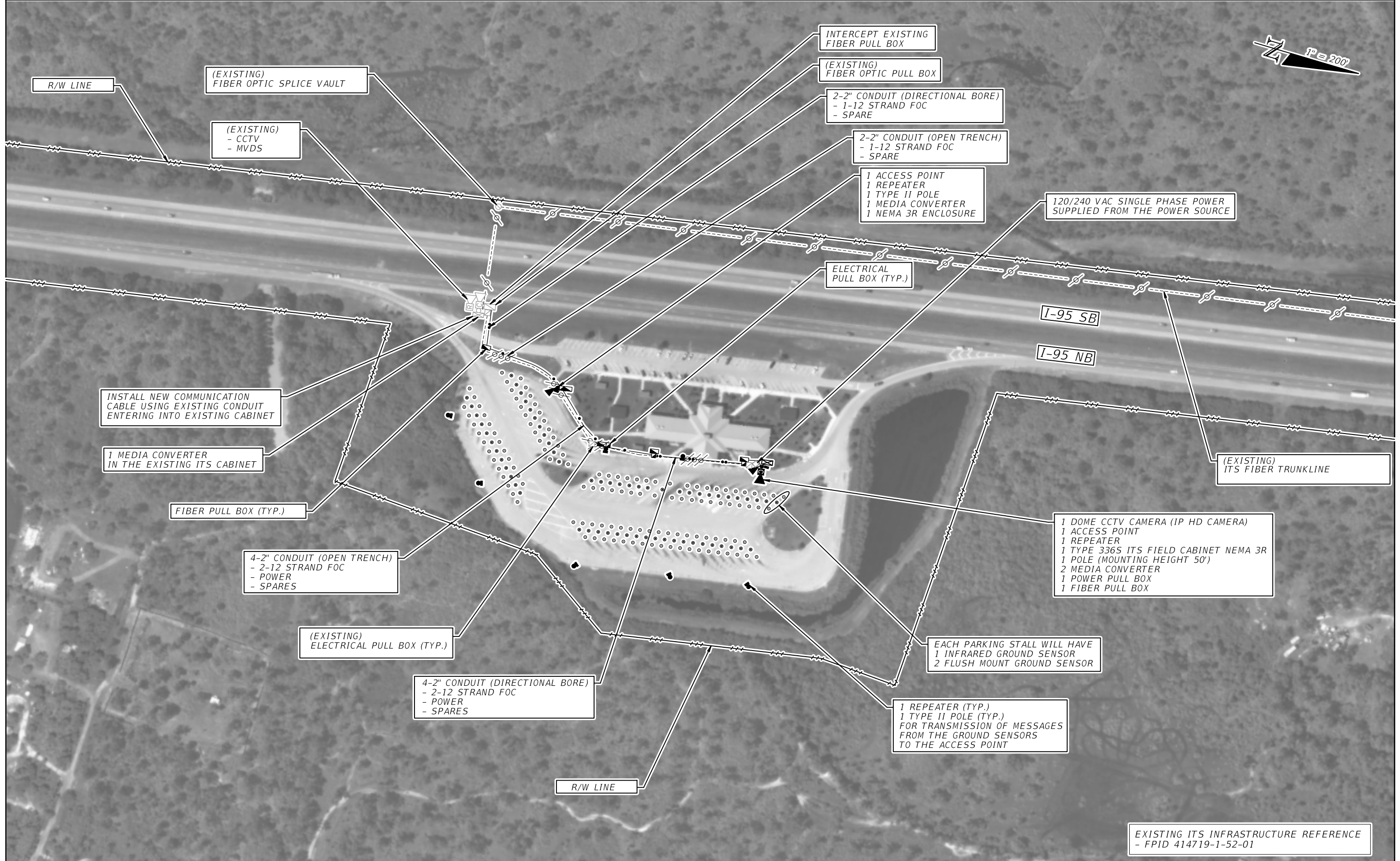


TRUCK PARKING AVAILABILITY SIGN WITH 3-DIGIT EMBEDDED DMS AT SB MM 173.72 NORTH OF REST AREA (MM 169) (ADJUST SIGN LOCATION PER MUTCD SIGN SPACING REQUIREMENTS)

- 3-DIGIT EMBEDDED DMS
- POWER FROM NEAREST ITS CABINET
- POLE MOUNTED NEMA CABINET
- COMMUNICATION FROM NEAREST ITS CABINET

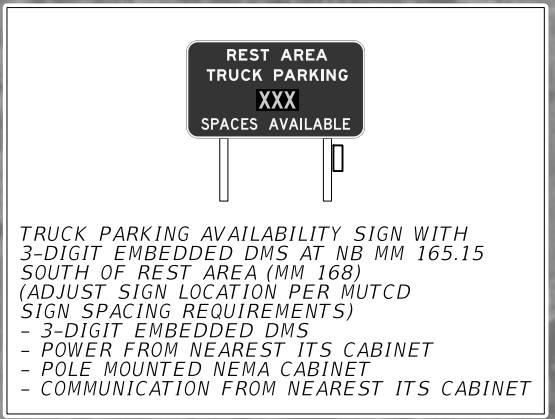
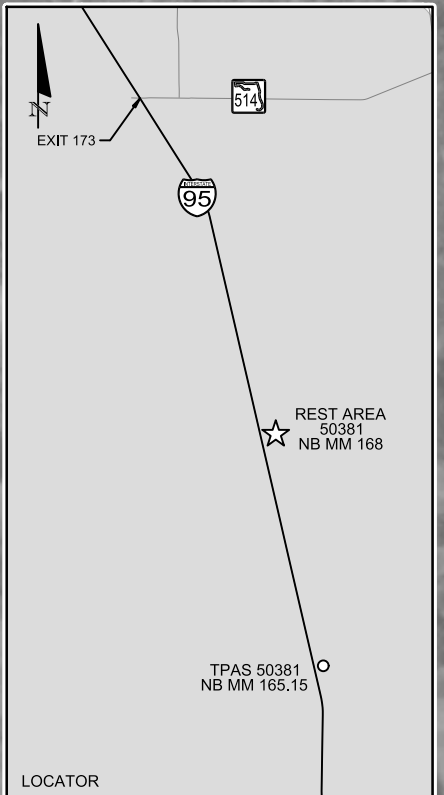
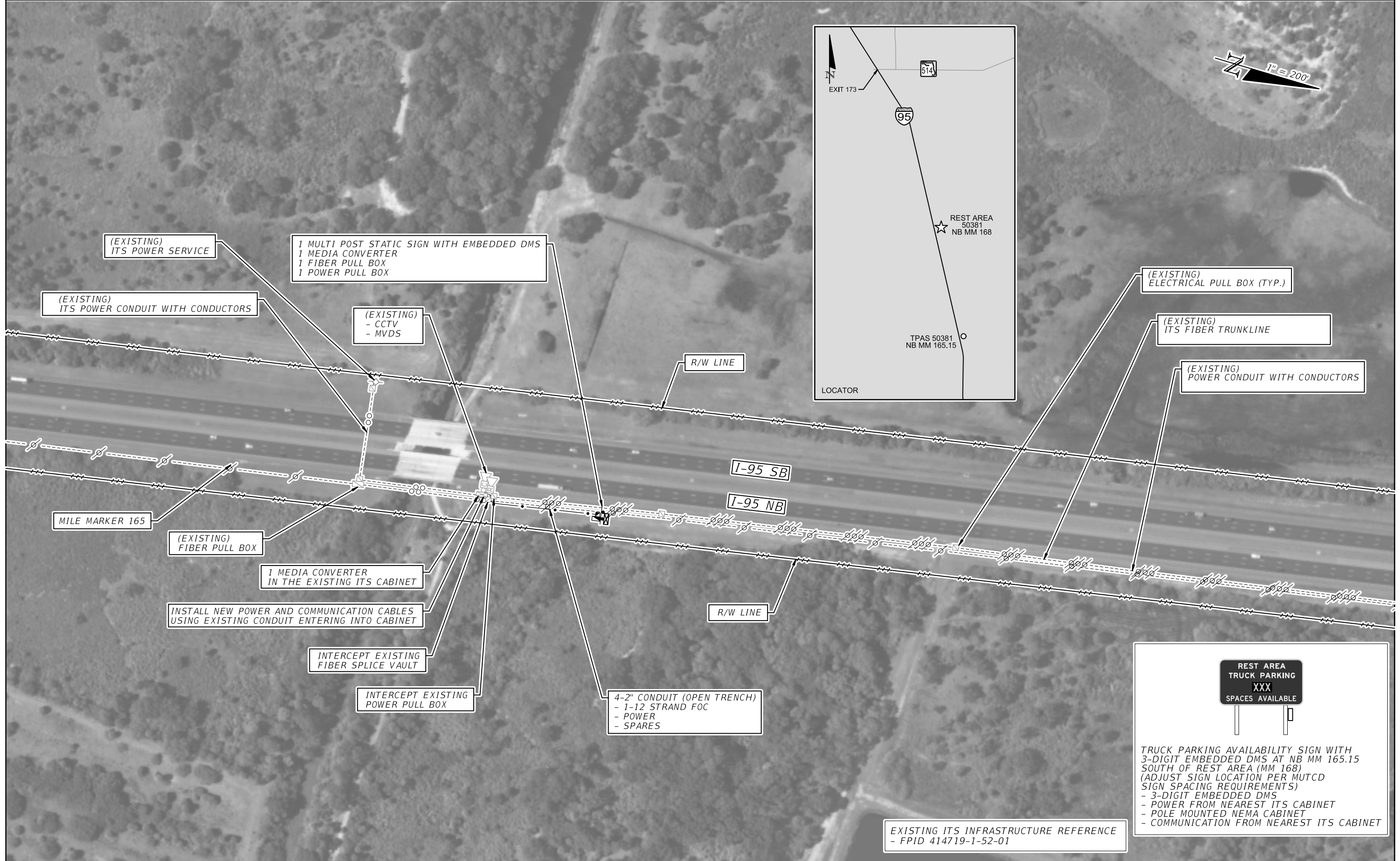
EXISTING ITS INFRASTRUCTURE REFERENCE - FPID 414719-1-52-01

REVISIONS				STATE OF FLORIDA DEPARTMENT OF TRANSPORTATION			TRUCK PARKING AVAILABILITY SYSTEM BREVARD COUNTY, FDOT DISTRICT 5 TPAS SIGN 50382 SOUTHBOUND MILE MARKER 173.72	SHEET NO.
DATE	DESCRIPTION	DATE	DESCRIPTION	ROAD NO.	COUNTY	FINANCIAL PROJECT ID		
				I-95	BREVARD	438096-1-52-01		IT-04A



EXISTING ITS INFRASTRUCTURE REFERENCE
- FPID 414719-1-52-01

REVISIONS				STATE OF FLORIDA DEPARTMENT OF TRANSPORTATION	TRUCK PARKING AVAILABILITY SYSTEM BREVARD COUNTY, FDOT DISTRICT 5 REST AREA 50381 (61 SPACES) NORTHBOUND MILE MARKER 168	SHEET NO. IT-05
DATE	DESCRIPTION	DATE	DESCRIPTION			



EXISTING ITS INFRASTRUCTURE REFERENCE
- FPID 414719-1-52-01

REVISIONS				STATE OF FLORIDA DEPARTMENT OF TRANSPORTATION	TRUCK PARKING AVAILABILITY SYSTEM BREVARD COUNTY, FDOT DISTRICT 5 TPAS SIGN 50381 NORTHBOUND MILE MARKER 165.15	SHEET NO. IT-05A
DATE	DESCRIPTION	DATE	DESCRIPTION			




EXISTING ITS INFRASTRUCTURE REFERENCE
 BASED ON FDOT OSP LINK
[-http://www.acstraffic.net/GE/FDOT OSPInsight Export for Google Earth.kmz](http://www.acstraffic.net/GE/FDOT%20OSPInsight%20Export%20for%20Google%20Earth.kmz)

REVISIONS					STATE OF FLORIDA DEPARTMENT OF TRANSPORTATION			TRUCK PARKING AVAILABILITY SYSTEM SEMINOLE COUNTY, FDOT DISTRICT 5 REST AREA 50221 (17 SPACES) EASTBOUND MILE MARKER 96	SHEET NO.
DATE	DESCRIPTION	DATE	DESCRIPTION		ROAD NO.	COUNTY	FINANCIAL PROJECT ID		IT-06
						I-4	SEMINOLE		438096-1-52-01



1 MULTI POST STATIC SIGN WITH EMBEDDED DMS
 1 MEDIA CONVERTER
 1 FIBER PULL BOX
 1 POWER PULL BOX

4 - 2" CONDUIT (OPEN TRENCH)
 - 1-12 STRAND FOC
 - POWER
 - SPARES



TRUCK PARKING AVAILABILITY SIGN WITH 3-DIGIT EMBEDDED DMS AT EB MM 92.84 WEST OF REST AREA (MM 96) (ADJUST SIGN LOCATION PER MUTCD SIGN SPACING REQUIREMENTS)
 - 3-DIGIT EMBEDDED DMS
 - POWER FROM NEAREST ITS CABINET
 - POLE MOUNTED NEMA CABINET
 - COMMUNICATION FROM NEAREST ITS CABINET

EXISTING ITS INFRASTRUCTURE REFERENCE
 BASED ON FDOT OSP LINK
 -[http://www.acstraffic.net/GE/FDOT OSPInsight Export for Google Earth.kmz](http://www.acstraffic.net/GE/FDOT%20OSPInsight%20Export%20for%20Google%20Earth.kmz)

REVISIONS				STATE OF FLORIDA DEPARTMENT OF TRANSPORTATION			TRUCK PARKING AVAILABILITY SYSTEM SEMINOLE COUNTY, FDOT DISTRICT 5 TPAS SIGN 50221 EASTBOUND MILE MARKER 92.84	SHEET NO. IT-06A
DATE	DESCRIPTION	DATE	DESCRIPTION	ROAD NO.	COUNTY	FINANCIAL PROJECT ID		
				I-4	SEMINOLE	438096-1-52-01		