

GENERAL NOTES

1. THE LOCATION(S) OF THE UTILITIES SHOWN IN THE PLANS ARE BASED ON LIMITED INVESTIGATION TECHNIQUES, AND MARK-UPS FROM UTILITY OWNERS. ALL UTILITIES SHOULD BE CONSIDERED APPROXIMATE ONLY.
2. THE CONTRACTOR SHALL NOTIFY UTILITY OWNERS LISTED THROUGH SUNSHINE STATE ONE CALL OF FLORIDA (811) TWO BUSINESS DAYS IN ADVANCE OF BEGINNING CONSTRUCTION ON THE JOB SITE.
3. FIBER OPTIC AND POWER PULL BOXES AND CONDUIT SHALL BE LOCATED WITHIN 100 FEET OF THE DEVICE THEY SUPPORT. ITS DEVICE LOCATIONS ARE APPROXIMATE AND MAY REQUIRE RELOCATION BY THE PROJECT ENGINEER. IF DEVICE RELOCATIONS OCCUR FOR ANY REASON, THE PULL BOXES AND CONDUIT SUPPORTING THAT DEVICE SHALL BE RELOCATED AND/OR EXTENDED.
4. INSTALL FIBER OPTIC CONDUIT FOR COMMUNICATION TO DEVICES AS SHOWN IN THE PLANS AND IN ACCORDANCE WITH ALL FDOT STANDARDS FOR CONDUIT INSTALLATION.
5. THE CONTRACTOR SHALL BE RESPONSIBLE FOR FURNISHING AND INSTALLING ABOVE GROUND TUBULAR ROUTE MARKERS PER FDOT STANDARDS. MARKERS SHALL BE PLACED AT A MAXIMUM OF 500 FEET AND AT EVERY PULL AND SPLICE BOX. A MARKER LABEL TEMPLATE SHALL BE PROVIDED FOR REVIEW.
6. THE CONDUIT SHALL BE SEALED WITH THE SPECIFIED DUCT PLUG AT THE TIME OF CONDUIT INSTALLATION AND AFTER FINAL FIBER INSTALLATION.
7. ELECTRICAL POWER SERVICE METERS SHALL HAVE A SEPARATE BREAKER FOR EACH ITS CIRCUIT.
8. THE CONTRACTOR SHALL HAND DIG (SOFT DIG) TO A DEPTH OF FOUR (4) FEET WHERE UTILITIES ARE IN CONFLICT PRIOR TO USE OF A MECHANICAL AUGER. ANY POTENTIAL CONFLICTS SHALL BE REPORTED TO THE PROJECT ENGINEER IMMEDIATELY.

UTILITY OWNERS

- AT&T Distribution
Otis Keeve
954-723-2540
- Broward County
Robert Blount
954-847-2701
- Comcast Cable Communications, Inc
Liam McKenna
904-380-7574
- Comcast Cable - St. Lucie
Tony Springsteel
772-321-3425
- Florida Gas Transmission
Joseph Sanchez
407-838-7171
- Florida Power & Light
Tracy Stern
386-329-5152
- Fort Pierce Utilities
James Carnes
772-466-1600
- Indiantown Telephone System
Larry Luston
772-597-2111
- Lee County Electric
Tom Bailey
239-656-2414

LEGEND

EXISTING	PROPOSED	
		GROUND SENSORS
		REPEATER
		ACCESS POINT
		DETECTION ZONE
		CCTV WITH POLE
		MVDS
		MULTI-POST STATIC SIGN W/ ELECTRICAL DISPLAY SIGN
		BASE MOUNT CABINET
		POLE MOUNT CABINET
		ELECTRICAL PULL BOX
		FIBER OPTIC PULL BOX
		SPLICE VAULT
		POWER SERVICE
		POLE
		DMS
		CONDUIT, OPEN TRENCH
		CONDUIT, DIRECTIONAL BORE
		FIBER OPTIC RUN
		POWER RUN

REVISIONS				STATE OF FLORIDA DEPARTMENT OF TRANSPORTATION			<i>GENERAL NOTES</i>	SHEET NO.
DATE	DESCRIPTION	DATE	DESCRIPTION	ROAD NO.	COUNTY	FINANCIAL PROJECT ID		2
				VARIES	VARIES	440090-1-52-01		

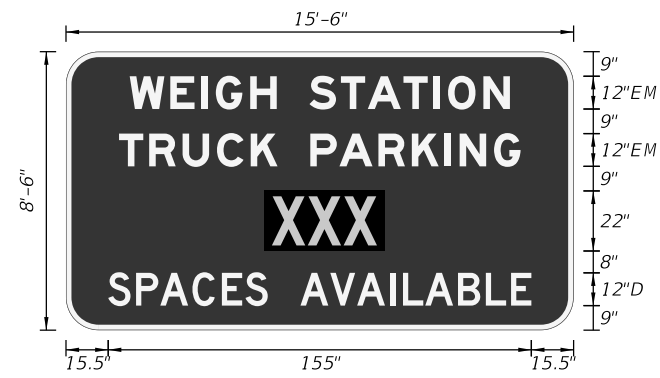
SIGN NAME	REST	QTY	SIGN NUMBER	STATION(S)	
PANEL	BORDER			none	
WIDTH	15'-6"	WIDTH	2"		
HEIGHT	8'-6"	RADII	12"		
LEGEND	White	COLOR	White		
COLOR	Blue				
SYMBOL(S)	ANGLE	X	Y	WID	HT
DMS	0	72.7	29	44	22
SIGN NUMBER	NUMBER OF POSTS	CLEARANCE Edge Of Lane	COLUMN SIZE	AVERAGE LENGTH	



NO. OF LIGHT FIXTURES	FIXTURE SPACING	PHOTOMETRIC CURVE	WATT	VOLTAGE

COPY		R	E	S	T	A	R	E	A	L										
SPACE	40.7	12.2	11	11.5	8.9	12	14.3	12.2	10.2	12.1	40.7	104.5								
COPY		T	R	U	C	K	P	A	R	K	I	N	G	L						
SPACE	19.4	11	12.2	12.6	12.4	9.8	12	10.7	14.3	12.2	11.8	5.8	12.6	9.7	19.4	147.1				
COPY		S	P	A	C	E	S	A	V	A	I	L	A	B	L	E	L			
SPACE	15.5	10.2	8.9	11.8	10.8	8.6	8.2	12	10.9	9.8	12	4.8	8.2	12	10.2	9.2	7.4	15.5	155	
COPY																				
SPACE																				
COPY																				
SPACE																				
COPY																				
SPACE																				

SIGN NAME	WEIGH	QTY	SIGN NUMBER	STATION(S)	
PANEL	BORDER			none	
WIDTH	15'-6"	WIDTH	2"		
HEIGHT	8'-6"	RADII	12"		
LEGEND	White	COLOR	White		
COLOR	Blue				
SYMBOL(S)	ANGLE	X	Y	WID	HT
DMS	0	72.7	29	44	22
SIGN NUMBER	NUMBER OF POSTS	CLEARANCE Edge Of Lane	COLUMN SIZE	AVERAGE LENGTH	



NO. OF LIGHT FIXTURES	FIXTURE SPACING	PHOTOMETRIC CURVE	WATT	VOLTAGE

COPY		W	E	I	G	H	S	T	A	T	I	O	N	L						
SPACE	23.3	14.9	11.4	5.3	12.6	9.7	12	11.5	9.8	13.1	11	5.3	13	9.7	23.3	139.3				
COPY		T	R	U	C	K	P	A	R	K	I	N	G	L						
SPACE	19.4	11	12.2	12.6	12.4	9.8	12	10.7	14.3	12.2	11.8	5.8	12.6	9.7	19.4	147.1				
COPY		S	P	A	C	E	S	A	V	A	I	L	A	B	L	E	L			
SPACE	15.5	10.2	8.9	11.8	10.8	8.6	8.2	12	10.9	9.8	12	4.8	8.2	12	10.2	9.2	7.4	15.5	155	
COPY																				
SPACE																				
COPY																				
SPACE																				
COPY																				
SPACE																				

SIGN NAME		QTY	SIGN NUMBER	STATION(S)	
PANEL	BORDER				
WIDTH	WIDTH				
HEIGHT	RADII				
LEGEND	COLOR				
COLOR					
SYMBOL(S)	ANGLE	X	Y	WID	HT
SIGN NUMBER	NUMBER OF POSTS	CLEARANCE Edge Of Lane	COLUMN SIZE	AVERAGE LENGTH	

NO. OF LIGHT FIXTURES	FIXTURE SPACING	PHOTOMETRIC CURVE	WATT	VOLTAGE

COPY																				
SPACE																				
COPY																				
SPACE																				
COPY																				
SPACE																				
COPY																				
SPACE																				
COPY																				
SPACE																				

SIGN NAME		QTY	SIGN NUMBER	STATION(S)	
PANEL	BORDER				
WIDTH	WIDTH				
HEIGHT	RADII				
LEGEND	COLOR				
COLOR					
SYMBOL(S)	ANGLE	X	Y	WID	HT
SIGN NUMBER	NUMBER OF POSTS	CLEARANCE Edge Of Lane	COLUMN SIZE	AVERAGE LENGTH	

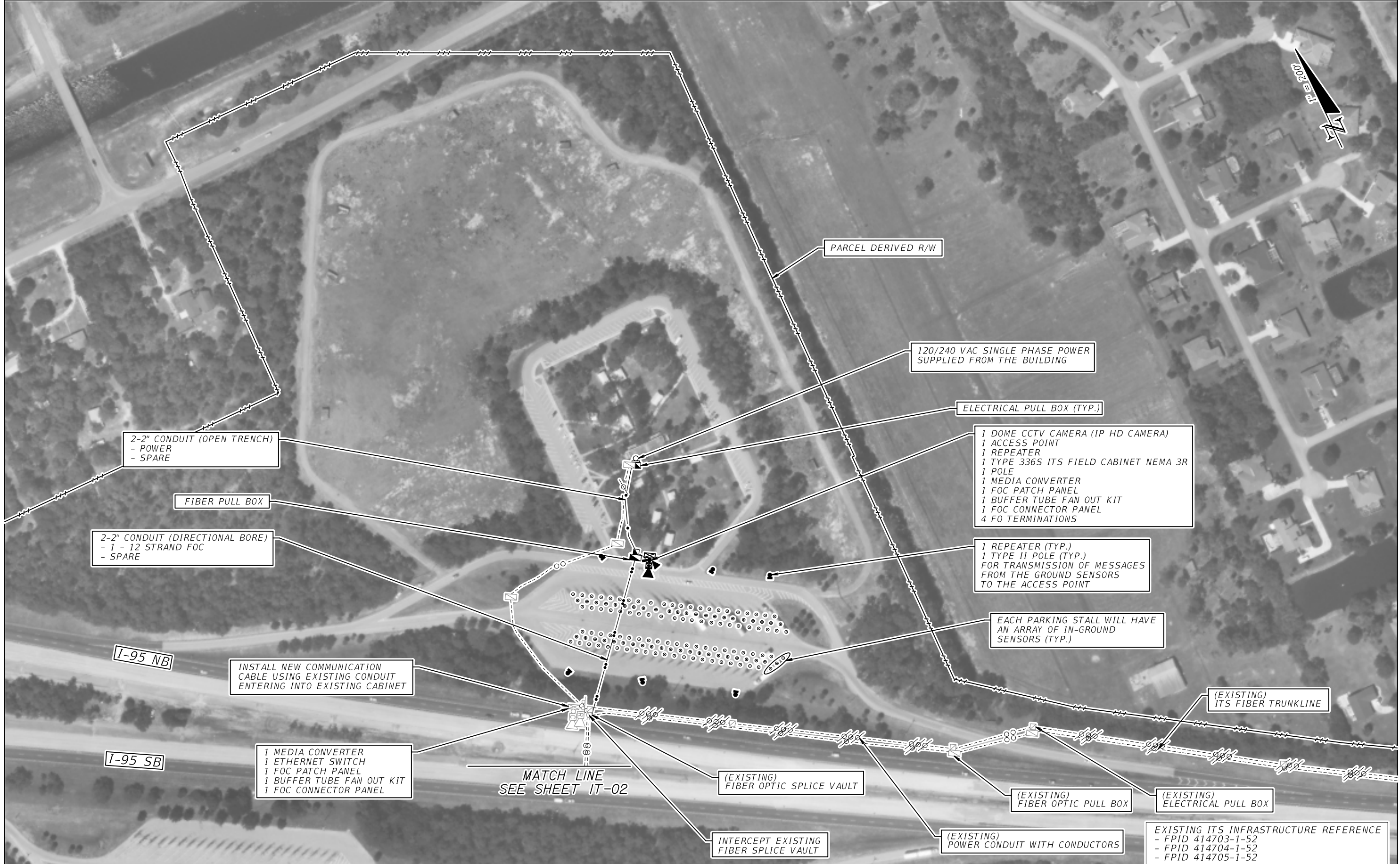
NO. OF LIGHT FIXTURES	FIXTURE SPACING	PHOTOMETRIC CURVE	WATT	VOLTAGE

COPY																				
SPACE																				
COPY																				
SPACE																				
COPY																				
SPACE																				
COPY																				
SPACE																				
COPY																				
SPACE																				

REVISIONS			
DATE	DESCRIPTION	DATE	DESCRIPTION

STATE OF FLORIDA DEPARTMENT OF TRANSPORTATION		
ROAD NO.	COUNTY	FINANCIAL PROJECT ID
VARIES	VARIES	440090-1-52-01

GUIDESIGN WORKSHEET	SHEET NO. 3
----------------------------	-----------------------



2-2" CONDUIT (OPEN TRENCH)
- POWER
- SPARE

FIBER PULL BOX

2-2" CONDUIT (DIRECTIONAL BORE)
- 1 - 12 STRAND FOC
- SPARE

I-95 NB

INSTALL NEW COMMUNICATION
CABLE USING EXISTING CONDUIT
ENTERING INTO EXISTING CABINET

I-95 SB

1 MEDIA CONVERTER
1 ETHERNET SWITCH
1 FOC PATCH PANEL
1 BUFFER TUBE FAN OUT KIT
1 FOC CONNECTOR PANEL

MATCH LINE
SEE SHEET IT-02

PARCEL DERIVED R/W

120/240 VAC SINGLE PHASE POWER
SUPPLIED FROM THE BUILDING

ELECTRICAL PULL BOX (TYP.)

1 DOME CCTV CAMERA (IP HD CAMERA)
1 ACCESS POINT
1 REPEATER
1 TYPE 336S ITS FIELD CABINET NEMA 3R
1 POLE
1 MEDIA CONVERTER
1 FOC PATCH PANEL
1 BUFFER TUBE FAN OUT KIT
1 FOC CONNECTOR PANEL
4 FO TERMINATIONS

1 REPEATER (TYP.)
1 TYPE II POLE (TYP.)
FOR TRANSMISSION OF MESSAGES
FROM THE GROUND SENSORS
TO THE ACCESS POINT

EACH PARKING STALL WILL HAVE
AN ARRAY OF IN-GROUND
SENSORS (TYP.)

(EXISTING)
ITS FIBER TRUNKLINE

(EXISTING)
FIBER OPTIC SPLICE VAULT

(EXISTING)
FIBER OPTIC PULL BOX

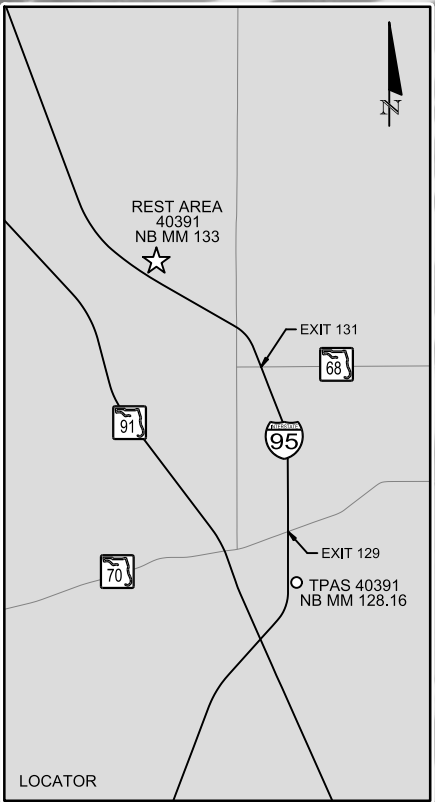
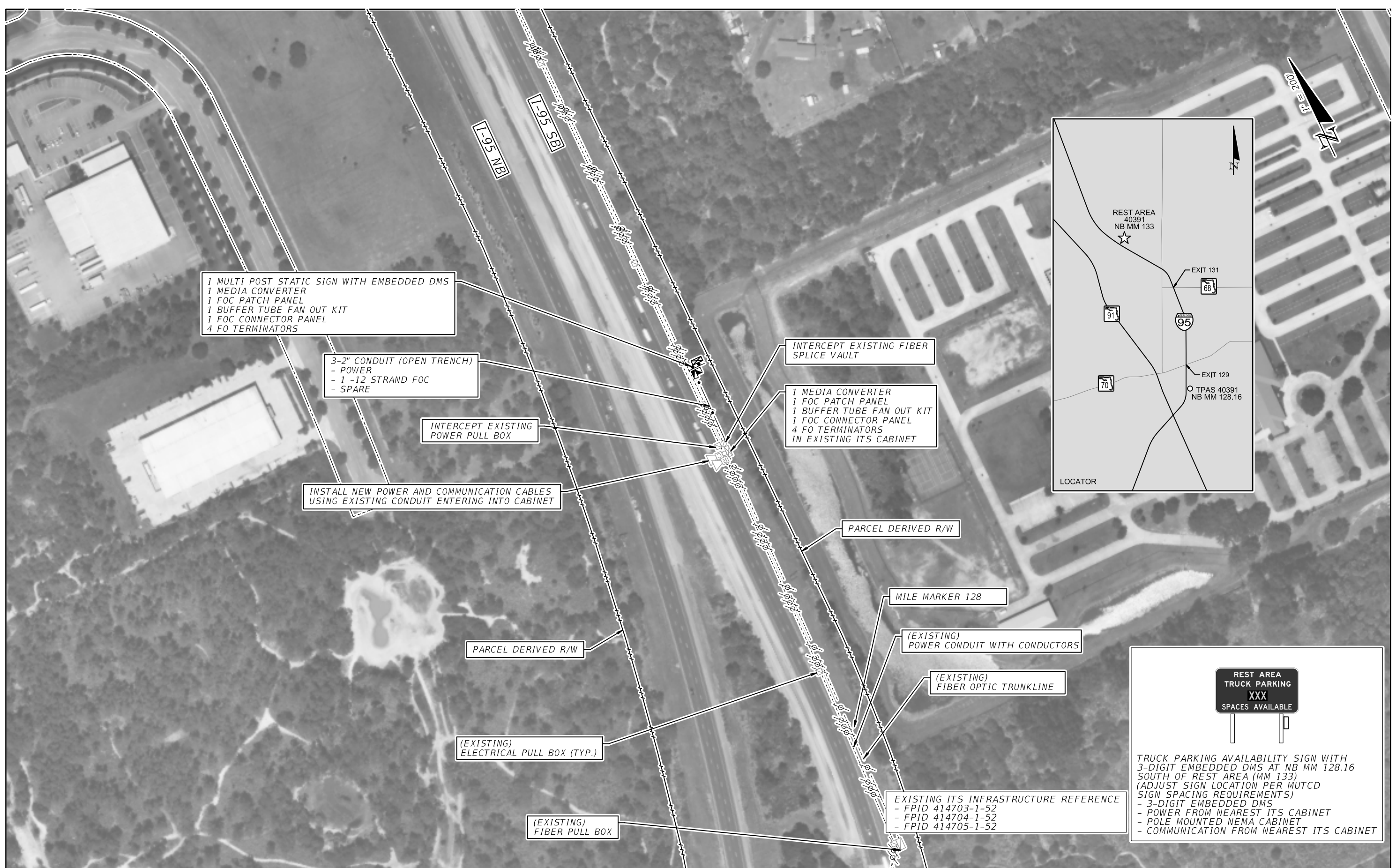
(EXISTING)
ELECTRICAL PULL BOX

INTERCEPT EXISTING
FIBER SPLICE VAULT

(EXISTING)
POWER CONDUIT WITH CONDUCTORS

EXISTING ITS INFRASTRUCTURE REFERENCE
- FPID 414703-1-52
- FPID 414704-1-52
- FPID 414705-1-52

REVISIONS				STATE OF FLORIDA DEPARTMENT OF TRANSPORTATION			TRUCK PARKING AVAILABILITY SYSTEM ST. LUCIE COUNTY, FDOT DISTRICT 4 REST AREA 40391 (44 SPACES) NORTHBOUND MILE MARKER 133	SHEET NO. IT-01
DATE	DESCRIPTION	DATE	DESCRIPTION	ROAD NO.	COUNTY	FINANCIAL PROJECT ID		
				I-95	ST. LUCIE	440090-1-52-01		



REST AREA
TRUCK PARKING
XXX
SPACES AVAILABLE

TRUCK PARKING AVAILABILITY SIGN WITH 3-DIGIT EMBEDDED DMS AT NB MM 128.16 SOUTH OF REST AREA (MM 133) (ADJUST SIGN LOCATION PER MUTCD SIGN SPACING REQUIREMENTS)
 - 3-DIGIT EMBEDDED DMS
 - POWER FROM NEAREST ITS CABINET
 - POLE MOUNTED NEMA CABINET
 - COMMUNICATION FROM NEAREST ITS CABINET

REVISIONS			
DATE	DESCRIPTION	DATE	DESCRIPTION

STATE OF FLORIDA DEPARTMENT OF TRANSPORTATION		
ROAD NO.	COUNTY	FINANCIAL PROJECT ID
I-95	ST. LUCIE	440090-1-52-01

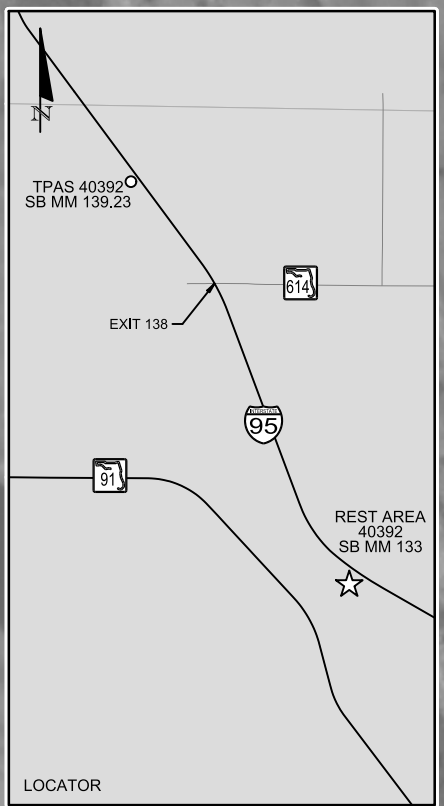
TRUCK PARKING AVAILABILITY SYSTEM
ST. LUCIE COUNTY, FDOT DISTRICT 4
TPAS SIGN 40391
NORTHBOUND MILE MARKER 128.16

SHEET NO.
IT-01A



EXISTING ITS INFRASTRUCTURE REFERENCE
 - FPID 414703-1-52
 - FPID 414704-1-52
 - FPID 414705-1-52

REVISIONS				STATE OF FLORIDA DEPARTMENT OF TRANSPORTATION	TRUCK PARKING AVAILABILITY SYSTEM ST. LUCIE COUNTY, FDOT DISTRICT 4 REST AREA 40392 (43 SPACES) SOUTHBOUND MILE MARKER 133	SHEET NO. IT-02
DATE	DESCRIPTION	DATE	DESCRIPTION			



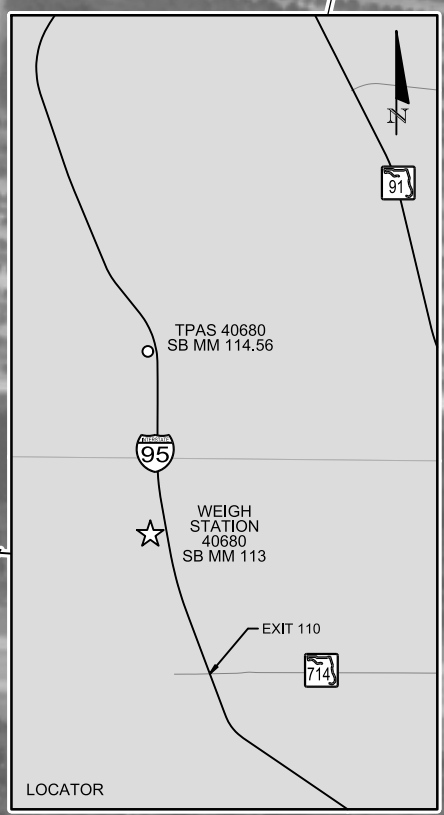
REST AREA TRUCK PARKING XXX SPACES AVAILABLE

TRUCK PARKING AVAILABILITY SIGN WITH 3-DIGIT EMBEDDED DMS AT SB MM 139.23 NORTH OF REST AREA (MM 133) (ADJUST SIGN LOCATION PER MUTCD SIGN SPACING REQUIREMENTS)
 - 3-DIGIT EMBEDDED DMS
 - POWER FROM NEAREST ITS CABINET
 - POLE MOUNTED NEMA CABINET
 - COMMUNICATION FROM NEAREST ITS CABINET

REVISIONS			
DATE	DESCRIPTION	DATE	DESCRIPTION

STATE OF FLORIDA DEPARTMENT OF TRANSPORTATION		
ROAD NO.	COUNTY	FINANCIAL PROJECT ID
1-95	ST. LUCIE	440090-1-52-01

TRUCK PARKING AVAILABILITY SYSTEM ST. LUCIE COUNTY, FDOT DISTRICT 4 TPAS SIGN 40392 SOUTHBOUND MILE MARKER 139.23	SHEET NO. IT-02A
--	-------------------------



1 MULTI POST STATIC SIGN WITH EMBEDDED DMS
 1 MEDIA CONVERTER
 1 FIBER PULL BOX
 1 POWER PULL BOX
 1 FOC PATCH PANEL
 1 FOC CONNECTOR PANEL
 1 BUFFER TUBE FAN OUT KIT
 4 FO TERMINATORS

3-2" CONDUIT (DIRECTIONAL BORE)
 - 1-12 STRAND FOC
 - POWER
 - SPARE

PARCEL DERIVED R/W

MILE MARKER 115

I-95 SB

INTERCEPT EXISTING FIBER PULL BOX

INTERCEPT EXISTING POWER PULL BOX

1 MEDIA CONVERTER
 1 FOC PATCH PANEL
 1 BUFFER TUBE FAN OUT KIT
 1 FOC CONNECTOR PANEL
 4 FO TERMINATORS
 IN EXISTING ITS CABINET

(EXISTING) POWER CONDUIT WITH CONDUCTORS

(EXISTING) ITS FIBER TRUNKLINE

INSTALL NEW POWER AND COMMUNICATION CABLES USING EXISTING CONDUIT ENTERING INTO CABINET

I-95 NB

(EXISTING) ELECTRICAL PULL BOX (TYP.)

PARCEL DERIVED R/W

WEIGH STATION
 TRUCK PARKING
 XXX
 SPACES AVAILABLE

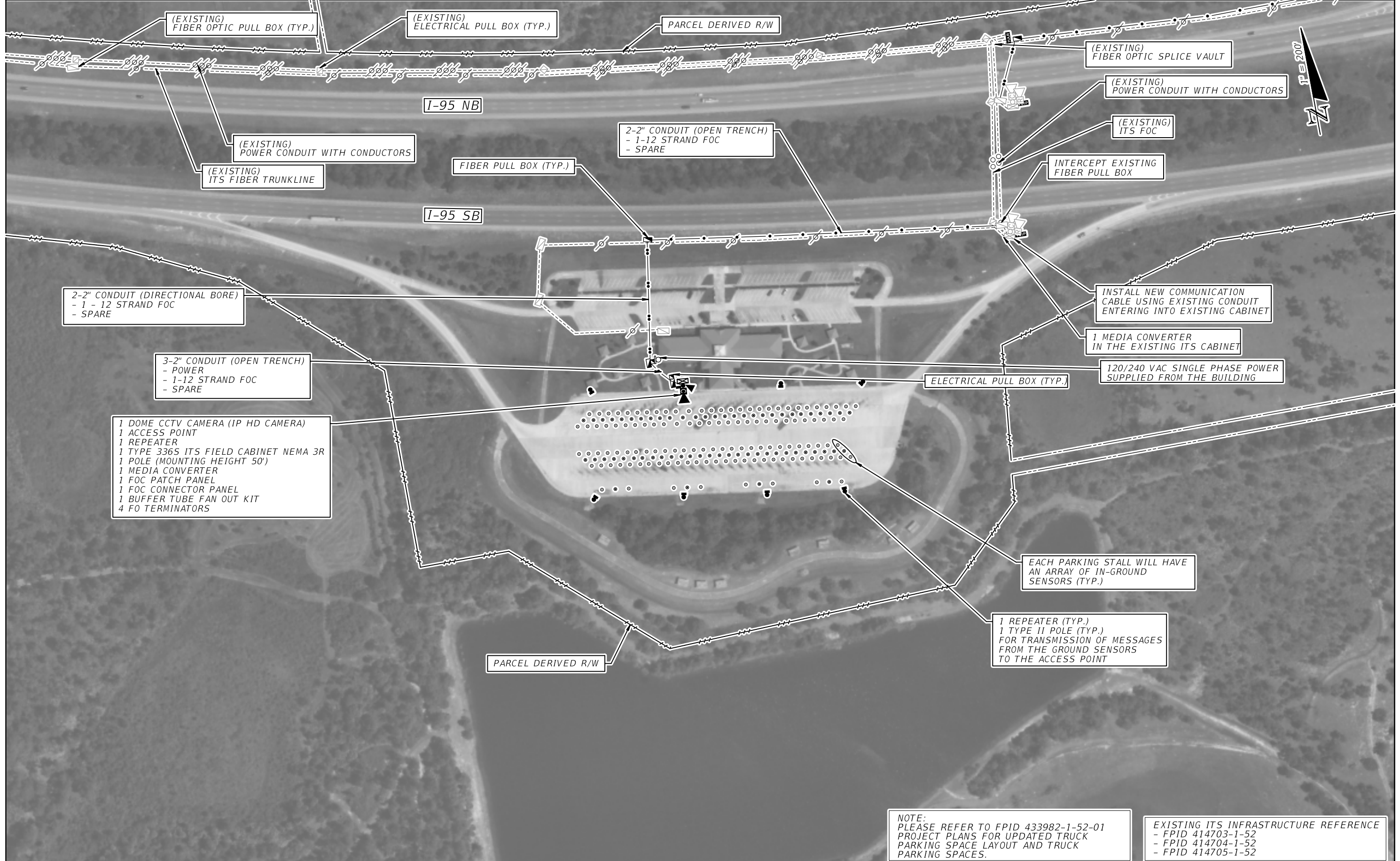
TRUCK PARKING AVAILABILITY SIGN WITH 3-DIGIT EMBEDDED DMS AT SB MM 114.56 NORTH OF WEIGH STATION (MM 113) (ADJUST SIGN LOCATION PER MUTCD SIGN SPACING REQUIREMENTS)
 - 3-DIGIT EMBEDDED DMS
 - POWER FROM NEAREST ITS CABINET
 - POLE MOUNTED NEMA CABINET
 - COMMUNICATION FROM NEAREST ITS CABINET

(EXISTING) - CCTV

(EXISTING) FIBER OPTIC SPLICE VAULT

EXISTING ITS INFRASTRUCTURE REFERENCE
 - FPID 414703-1-52
 - FPID 414704-1-52
 - FPID 414705-1-52

REVISIONS				STATE OF FLORIDA DEPARTMENT OF TRANSPORTATION			TRUCK PARKING AVAILABILITY SYSTEM ST. LUCIE COUNTY, FDOT DISTRICT 4 TPAS SIGN 40680 SOUTHBOUND MILE MARKER 114.56	SHEET NO. IT-03A
DATE	DESCRIPTION	DATE	DESCRIPTION	ROAD NO.	COUNTY	FINANCIAL PROJECT ID		
				I-95	ST. LUCIE	440090-1-52-01		

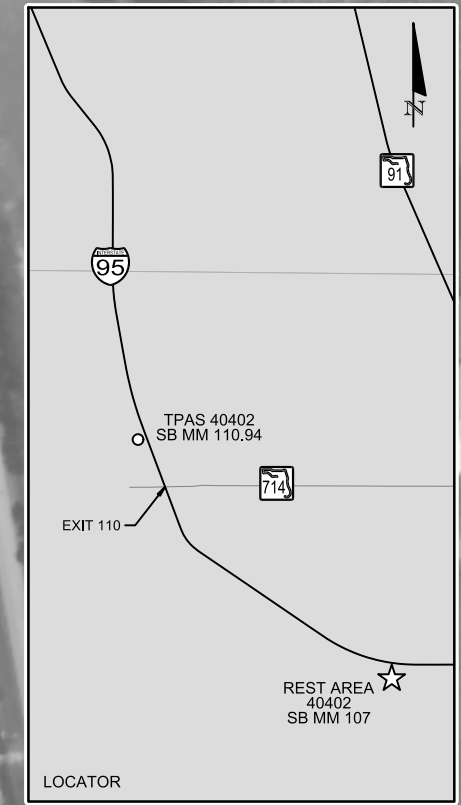


- 1 DOME CCTV CAMERA (IP HD CAMERA)
- 1 ACCESS POINT
- 1 REPEATER
- 1 TYPE 336S ITS FIELD CABINET NEMA 3R
- 1 POLE (MOUNTING HEIGHT 50')
- 1 MEDIA CONVERTER
- 1 FOC PATCH PANEL
- 1 FOC CONNECTOR PANEL
- 1 BUFFER TUBE FAN OUT KIT
- 4 FO TERMINATORS

NOTE:
PLEASE REFER TO FPID 433982-1-52-01
PROJECT PLANS FOR UPDATED TRUCK
PARKING SPACE LAYOUT AND TRUCK
PARKING SPACES.

EXISTING ITS INFRASTRUCTURE REFERENCE
- FPID 414703-1-52
- FPID 414704-1-52
- FPID 414705-1-52

REVISIONS					STATE OF FLORIDA DEPARTMENT OF TRANSPORTATION			TRUCK PARKING AVAILABILITY SYSTEM MARTIN COUNTY, FDOT DISTRICT 4 REST AREA 40402 (88 SPACES) SOUTHBOUND MILE MARKER 107	SHEET NO.
DATE	DESCRIPTION	DATE	DESCRIPTION		ROAD NO.	COUNTY	FINANCIAL PROJECT ID		IT-04
					I-95	MARTIN	440090-1-52-01		

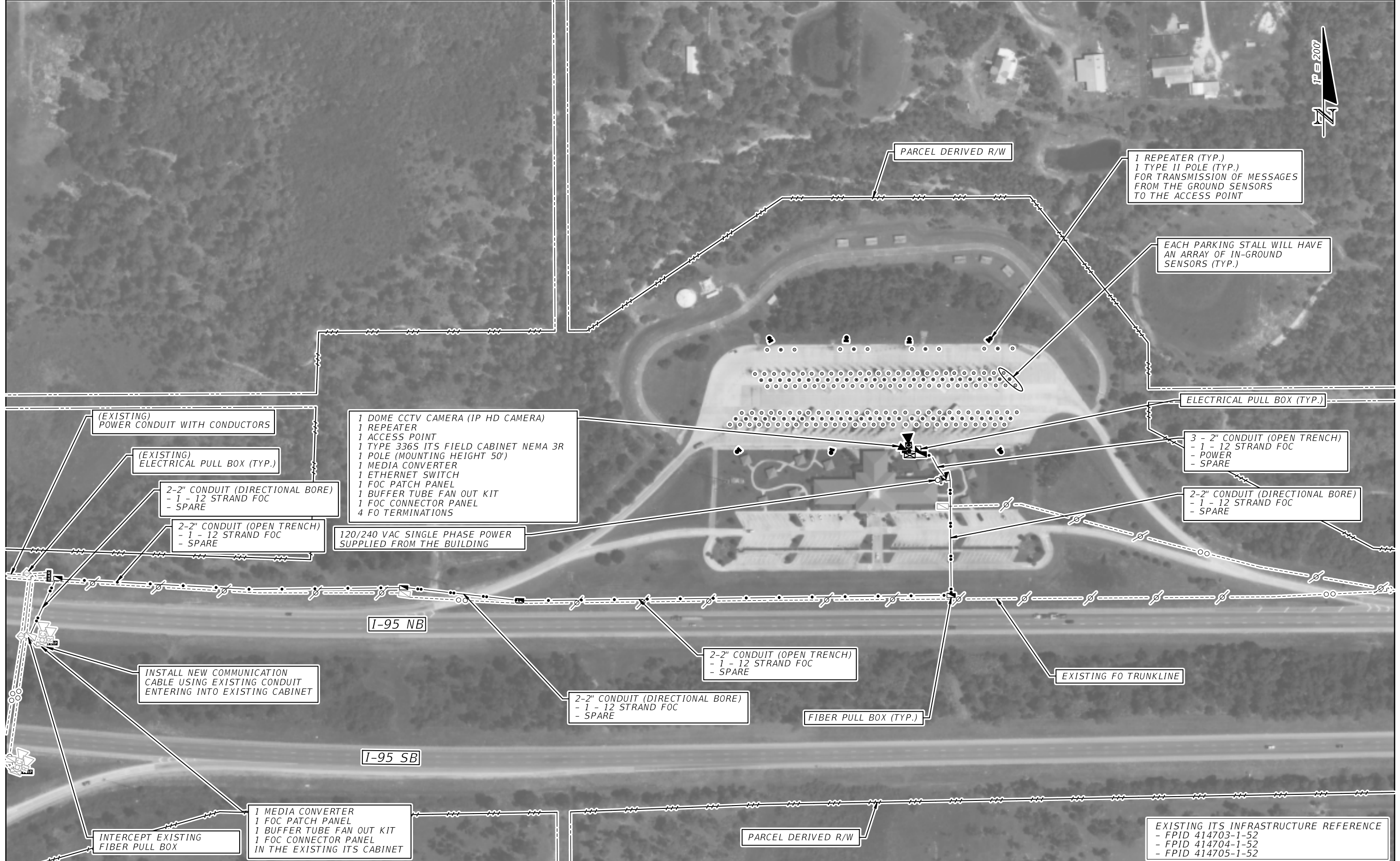


TRUCK PARKING AVAILABILITY SIGN WITH 3-DIGIT EMBEDDED DMS AT SB MM 110.94 NORTH OF REST AREA (MM 107) (ADJUST SIGN LOCATION PER MUTCD SIGN SPACING REQUIREMENTS)

- 3-DIGIT EMBEDDED DMS
- POWER FROM NEAREST ITS CABINET
- POLE MOUNTED NEMA CABINET
- COMMUNICATION FROM NEAREST ITS CABINET

EXISTING ITS INFRASTRUCTURE REFERENCE
 - FPID 414703-1-52
 - FPID 414704-1-52
 - FPID 414705-1-52

REVISIONS				STATE OF FLORIDA DEPARTMENT OF TRANSPORTATION			TRUCK PARKING AVAILABILITY SYSTEM MARTIN COUNTY, FDOT DISTRICT 4 TPAS SIGN 40402 SOUTHBOUND MILE MARKER 110.94	SHEET NO.
DATE	DESCRIPTION	DATE	DESCRIPTION	ROAD NO.	COUNTY	FINANCIAL PROJECT ID		IT-04A
				I-95	MARTIN	440090-1-52-01		



1 DOME CCTV CAMERA (IP HD CAMERA)
 1 REPEATER
 1 ACCESS POINT
 1 TYPE 336S ITS FIELD CABINET NEMA 3R
 1 POLE (MOUNTING HEIGHT 50')
 1 MEDIA CONVERTER
 1 ETHERNET SWITCH
 1 FOC PATCH PANEL
 1 BUFFER TUBE FAN OUT KIT
 1 FOC CONNECTOR PANEL
 4 FO TERMINATIONS

120/240 VAC SINGLE PHASE POWER
 SUPPLIED FROM THE BUILDING

1 REPEATER (TYP.)
 1 TYPE II POLE (TYP.)
 FOR TRANSMISSION OF MESSAGES
 FROM THE GROUND SENSORS
 TO THE ACCESS POINT

EACH PARKING STALL WILL HAVE
 AN ARRAY OF IN-GROUND
 SENSORS (TYP.)

ELECTRICAL PULL BOX (TYP.)

3 - 2" CONDUIT (OPEN TRENCH)
 - 1 - 12 STRAND FOC
 - POWER
 - SPARE

2-2" CONDUIT (DIRECTIONAL BORE)
 - 1 - 12 STRAND FOC
 - SPARE

2-2" CONDUIT (OPEN TRENCH)
 - 1 - 12 STRAND FOC
 - SPARE

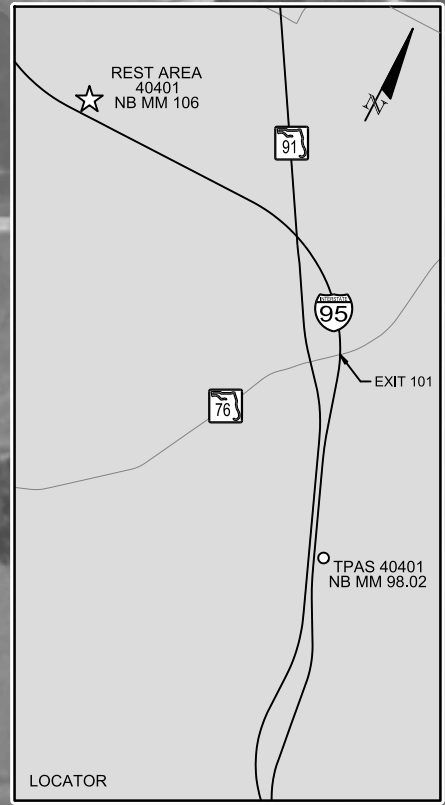
2-2" CONDUIT (DIRECTIONAL BORE)
 - 1 - 12 STRAND FOC
 - SPARE

FIBER PULL BOX (TYP.)

1 MEDIA CONVERTER
 1 FOC PATCH PANEL
 1 BUFFER TUBE FAN OUT KIT
 1 FOC CONNECTOR PANEL
 IN THE EXISTING ITS CABINET

EXISTING ITS INFRASTRUCTURE REFERENCE
 - FPID 414703-1-52
 - FPID 414704-1-52
 - FPID 414705-1-52

REVISIONS				STATE OF FLORIDA DEPARTMENT OF TRANSPORTATION	ROAD NO.	COUNTY	FINANCIAL PROJECT ID	TRUCK PARKING AVAILABILITY SYSTEM MARTIN COUNTY, FDOT DISTRICT 4 REST AREA 40401 (60 SPACES) NORTHBOUND MILE MARKER 106	SHEET NO.
DATE	DESCRIPTION	DATE	DESCRIPTION						



**REST AREA
TRUCK PARKING
XXX
SPACES AVAILABLE**

TRUCK PARKING AVAILABILITY SIGN WITH 3-DIGIT EMBEDDED DMS AT NB MM 98.02 SOUTH OF REST AREA (MM 106) (ADJUST SIGN LOCATION PER MUTCD SIGN SPACING REQUIREMENTS)

- 3-DIGIT EMBEDDED DMS
- POWER FROM NEAREST ITS CABINET
- POLE MOUNTED NEMA CABINET
- COMMUNICATION FROM NEAREST ITS CABINET

PARCEL DERIVED R/W

3-2" CONDUIT (OPEN TRENCH)
- POWER
- 1 -12 STRAND FOC
- SPARE

(EXISTING)
ELECTRICAL PULL BOX (TYP.)

(EXISTING)
FIBER OPTIC TRUNKLINE

PARCEL DERIVED R/W

1 MULTI POST STATIC SIGN WITH EMBEDDED DMS
1 MEDIA CONVERTER
1 FIBER PULL BOX
1 POWER PULL BOX
1 FOC PATCH PANEL
1 BUFFER TUBE FAN OUT KIT
1 FOC CONNECTOR PANEL
4 FO TERMINATORS

MILE MARKER 98

INTERCEPT EXISTING
POWER PULL BOX

INTERCEPT EXISTING
FIBER SPLICE VAULT

1 MEDIA CONVERTER
1 FOC PATCH PANEL
1 BUFFER TUBE FAN OUT KIT
1 FOC CONNECTOR PANEL
4 FO TERMINATORS
IN THE EXISTING ITS CABINET

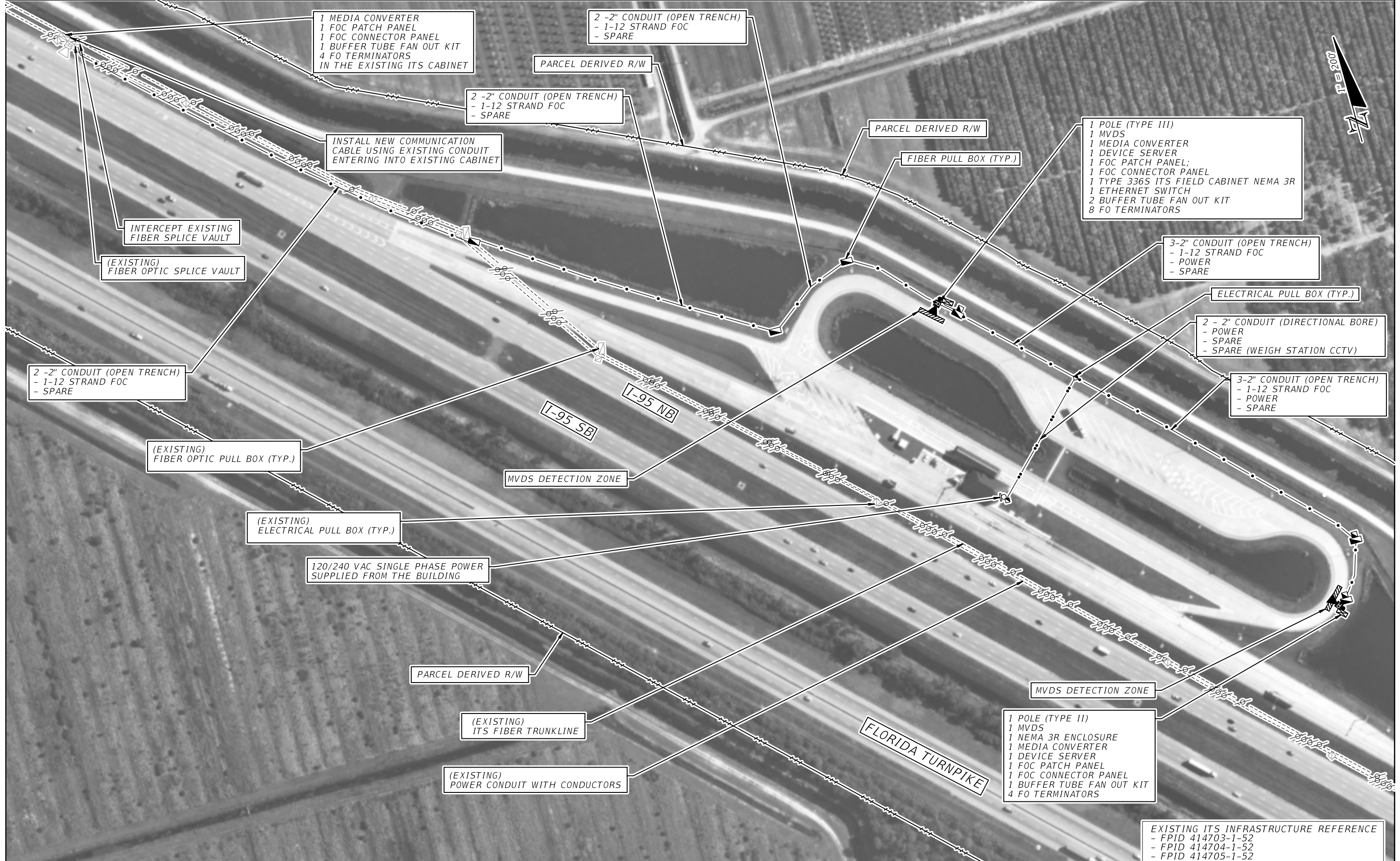
INSTALL NEW POWER AND COMMUNICATION CABLES
USING EXISTING CONDUIT ENTERING INTO CABINET

(EXISTING)
POWER CONDUIT WITH CONDUCTORS

(EXISTING)
FIBER OPTIC TRUNKLINE

EXISTING ITS INFRASTRUCTURE REFERENCE
- FPID 414703-1-52
- FPID 414704-1-52
- FPID 414705-1-52

REVISIONS				STATE OF FLORIDA DEPARTMENT OF TRANSPORTATION			TRUCK PARKING AVAILABILITY SYSTEM MARTIN COUNTY, FDOT DISTRICT 4 TPAS SIGN 40401 NORTHBOUND MILE MARKER 98.02	SHEET NO. IT-05A
DATE	DESCRIPTION	DATE	DESCRIPTION	ROAD NO.	COUNTY	FINANCIAL PROJECT ID		
				I-95	MARTIN	440090-1-52-01		



1 MEDIA CONVERTER
 1 FOC PATCH PANEL
 1 FOC CONNECTOR PANEL
 1 BUFFER TUBE FAN OUT KIT
 4 FO TERMINATORS
 IN THE EXISTING ITS CABINET

2 -2" CONDUIT (OPEN TRENCH)
 - 1-12 STRAND FOC
 - SPARE

2 -2" CONDUIT (OPEN TRENCH)
 - 1-12 STRAND FOC
 - SPARE

INSTALL NEW COMMUNICATION
 CABLE USING EXISTING CONDUIT
 ENTERING INTO EXISTING CABINET

INTERCEPT EXISTING
 FIBER SPLICE VAULT

(EXISTING)
 FIBER OPTIC SPLICE VAULT

2 -2" CONDUIT (OPEN TRENCH)
 - 1-12 STRAND FOC
 - SPARE

(EXISTING)
 FIBER OPTIC PULL BOX (TYP.)

(EXISTING)
 ELECTRICAL PULL BOX (TYP.)

120/240 VAC SINGLE PHASE POWER
 SUPPLIED FROM THE BUILDING

PARCEL DERIVED R/W

(EXISTING)
 ITS FIBER TRUNKLINE

(EXISTING)
 POWER CONDUIT WITH CONDUCTORS

PARCEL DERIVED R/W

PARCEL DERIVED R/W

FIBER PULL BOX (TYP.)

1 POLE (TYPE III)
 1 MVDS
 1 MEDIA CONVERTER
 1 DEVICE SERVER
 1 FOC PATCH PANEL;
 1 FOC CONNECTOR PANEL
 1 TYPE 336S ITS FIELD CABINET NEMA 3R
 1 ETHERNET SWITCH
 2 BUFFER TUBE FAN OUT KIT
 8 FO TERMINATORS

3-2" CONDUIT (OPEN TRENCH)
 - 1-12 STRAND FOC
 - POWER
 - SPARE

ELECTRICAL PULL BOX (TYP.)

2 - 2" CONDUIT (DIRECTIONAL BORE)
 - POWER
 - SPARE
 - SPARE (WEIGH STATION CCTV)

3-2" CONDUIT (OPEN TRENCH)
 - 1-12 STRAND FOC
 - POWER
 - SPARE

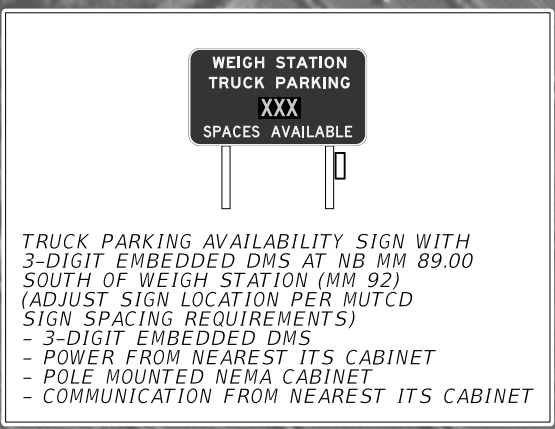
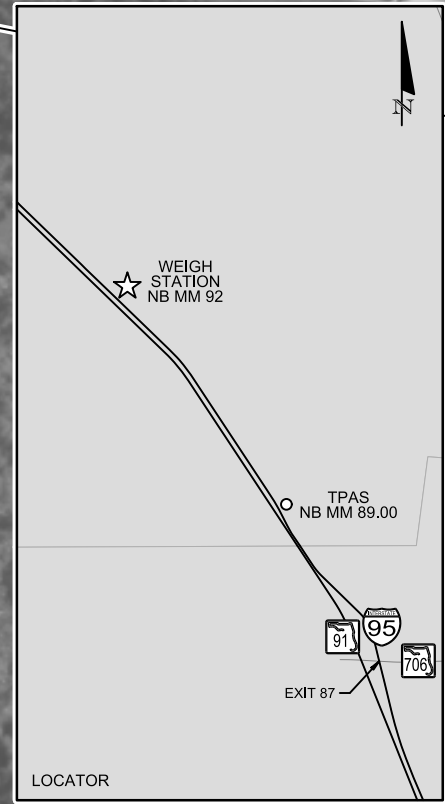
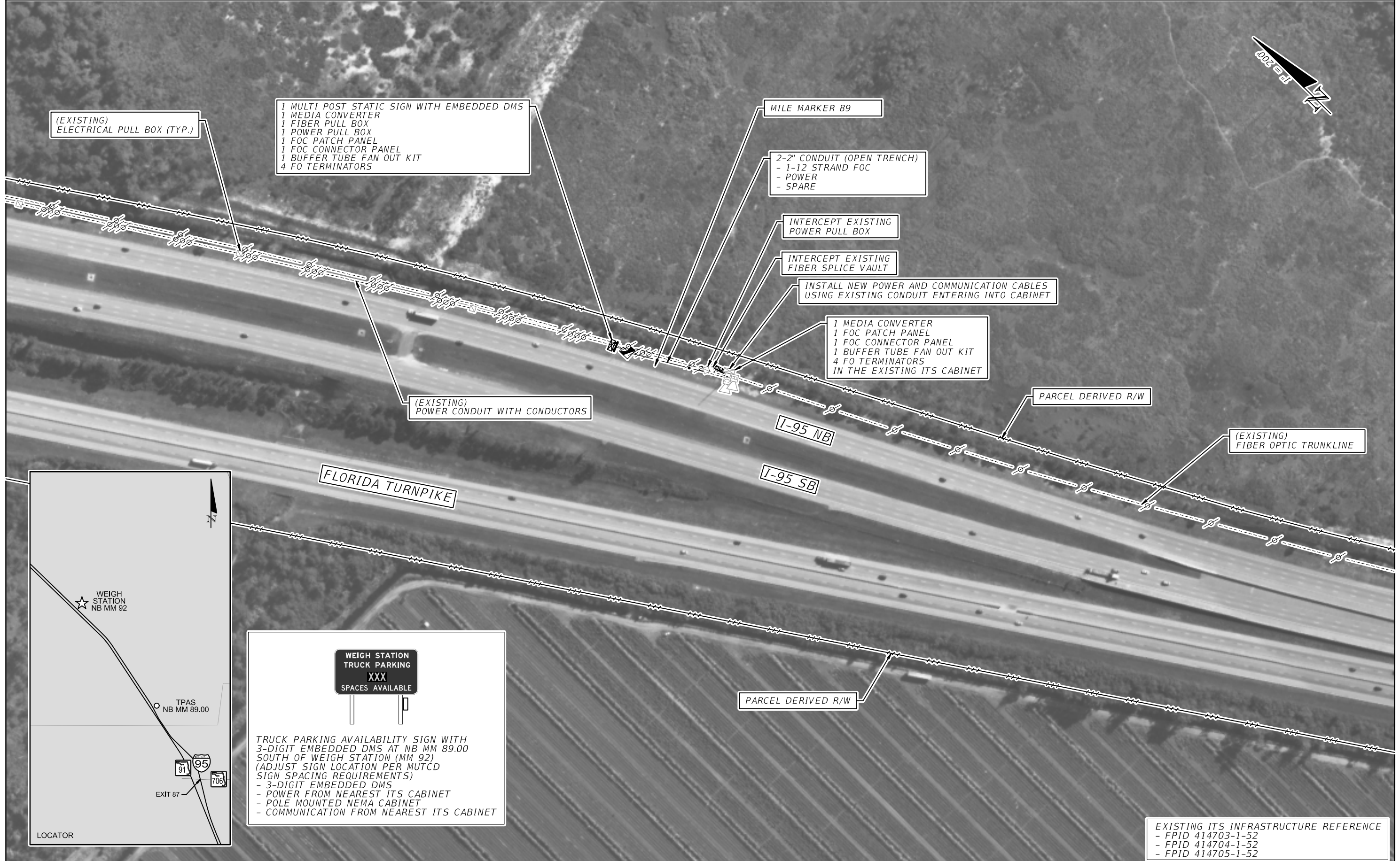
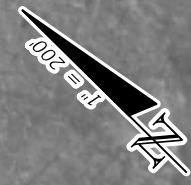
MVDS DETECTION ZONE

MVDS DETECTION ZONE

1 POLE (TYPE II)
 1 MVDS
 1 NEMA 3R ENCLOSURE
 1 MEDIA CONVERTER
 1 DEVICE SERVER
 1 FOC PATCH PANEL
 1 FOC CONNECTOR PANEL
 1 BUFFER TUBE FAN OUT KIT
 4 FO TERMINATORS

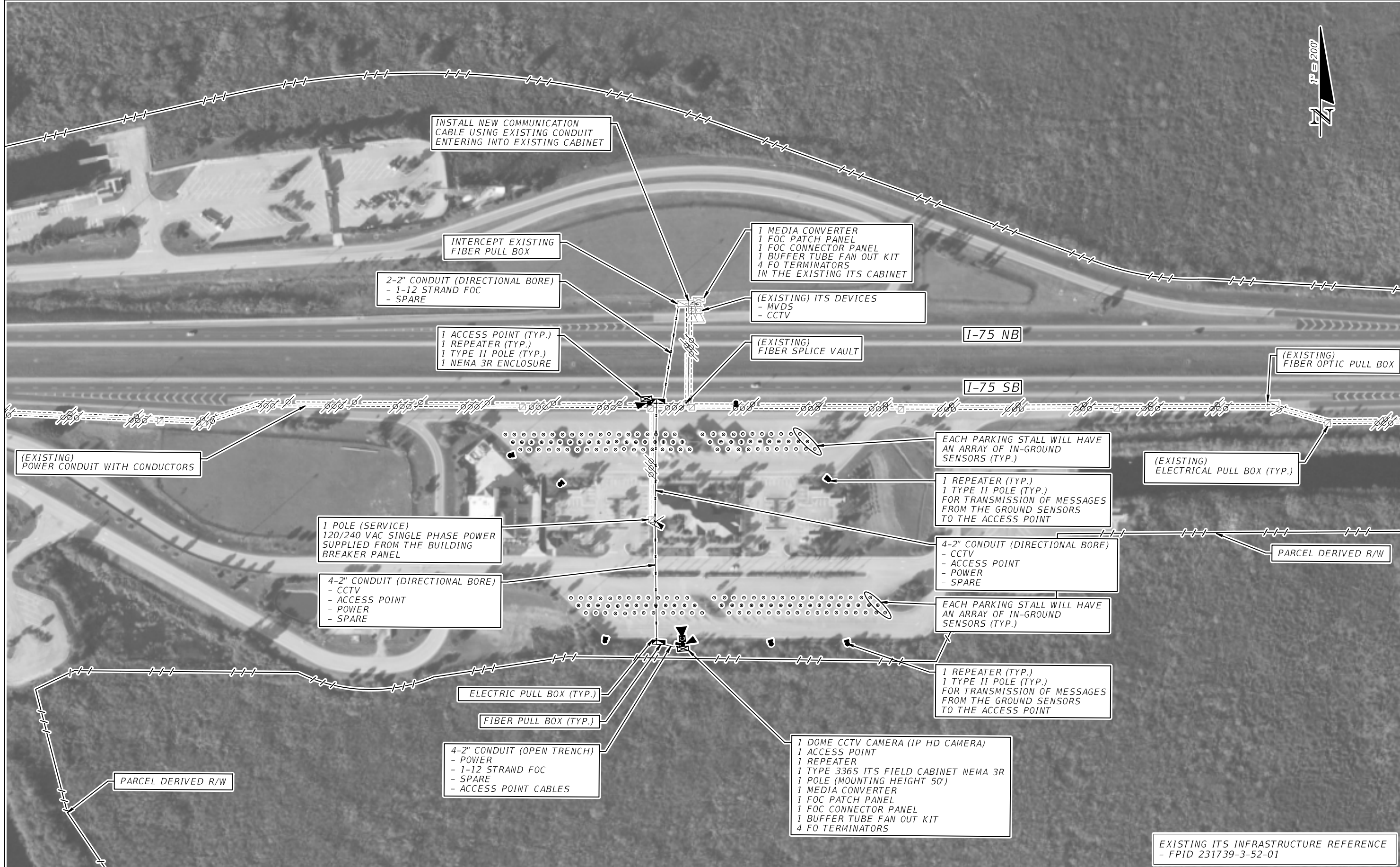
EXISTING ITS INFRASTRUCTURE REFERENCE
 - FPID 414703-1-52
 - FPID 414704-1-52
 - FPID 414705-1-52

REVISIONS				STATE OF FLORIDA DEPARTMENT OF TRANSPORTATION	TRUCK PARKING AVAILABILITY SYSTEM MARTIN COUNTY, FDOT DISTRICT 4 MARTIN COUNTY WEIGH STATION (13 SPACES) NORTHBOUND MILE MARKER 92	SHEET NO. IT-06
DATE	DESCRIPTION	DATE	DESCRIPTION			
				I-95 MARTIN 440090-1-52-01		



EXISTING ITS INFRASTRUCTURE REFERENCE
 - FPID 414703-1-52
 - FPID 414704-1-52
 - FPID 414705-1-52

REVISIONS				STATE OF FLORIDA DEPARTMENT OF TRANSPORTATION	TRUCK PARKING AVAILABILITY SYSTEM MARTIN COUNTY, FDOT DISTRICT 5 MARTIN COUNTY TPAS SIGN NORTHBOUND MILE MARKER 89.00	SHEET NO. IT-06A
DATE	DESCRIPTION	DATE	DESCRIPTION			



INSTALL NEW COMMUNICATION CABLE USING EXISTING CONDUIT ENTERING INTO EXISTING CABINET

INTERCEPT EXISTING FIBER PULL BOX

2-2" CONDUIT (DIRECTIONAL BORE)
- 1-12 STRAND FOC
- SPARE

1 ACCESS POINT (TYP.)
1 REPEATER (TYP.)
1 TYPE II POLE (TYP.)
1 NEMA 3R ENCLOSURE

1 MEDIA CONVERTER
1 FOC PATCH PANEL
1 FOC CONNECTOR PANEL
1 BUFFER TUBE FAN OUT KIT
4 FO TERMINATORS
IN THE EXISTING ITS CABINET

(EXISTING) ITS DEVICES
- MVDS
- CCTV

(EXISTING) FIBER SPLICE VAULT

I-75 NB

I-75 SB

(EXISTING) FIBER OPTIC PULL BOX

(EXISTING) POWER CONDUIT WITH CONDUCTORS

EACH PARKING STALL WILL HAVE AN ARRAY OF IN-GROUND SENSORS (TYP.)

(EXISTING) ELECTRICAL PULL BOX (TYP.)

1 REPEATER (TYP.)
1 TYPE II POLE (TYP.)
FOR TRANSMISSION OF MESSAGES FROM THE GROUND SENSORS TO THE ACCESS POINT

1 POLE (SERVICE)
120/240 VAC SINGLE PHASE POWER SUPPLIED FROM THE BUILDING BREAKER PANEL

4-2" CONDUIT (DIRECTIONAL BORE)
- CCTV
- ACCESS POINT
- POWER
- SPARE

4-2" CONDUIT (DIRECTIONAL BORE)
- CCTV
- ACCESS POINT
- POWER
- SPARE

PARCEL DERIVED R/W

EACH PARKING STALL WILL HAVE AN ARRAY OF IN-GROUND SENSORS (TYP.)

1 REPEATER (TYP.)
1 TYPE II POLE (TYP.)
FOR TRANSMISSION OF MESSAGES FROM THE GROUND SENSORS TO THE ACCESS POINT

ELECTRIC PULL BOX (TYP.)

FIBER PULL BOX (TYP.)

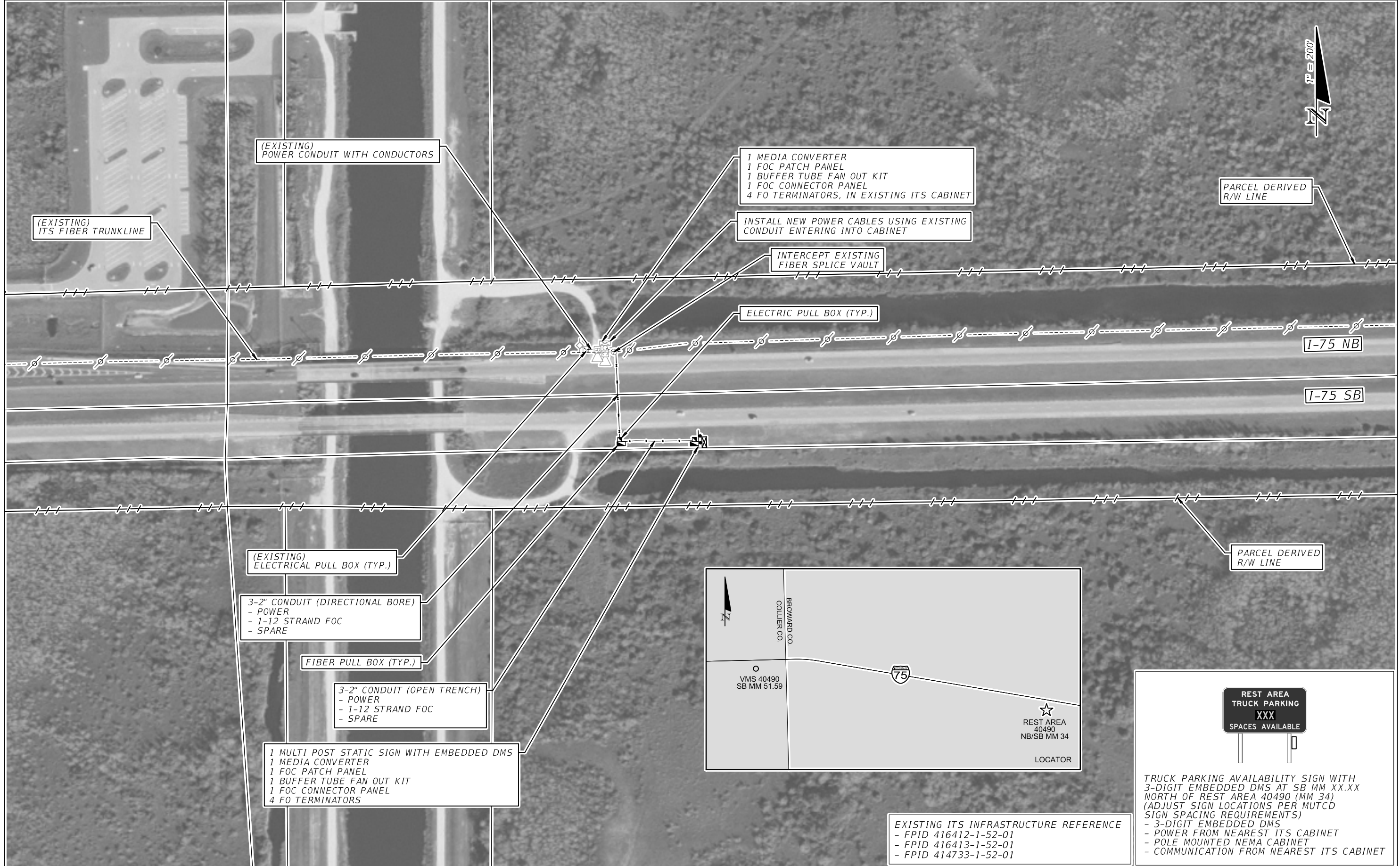
4-2" CONDUIT (OPEN TRENCH)
- POWER
- 1-12 STRAND FOC
- SPARE
- ACCESS POINT CABLES

1 DOME CCTV CAMERA (IP HD CAMERA)
1 ACCESS POINT
1 REPEATER
1 TYPE 336S ITS FIELD CABINET NEMA 3R
1 POLE (MOUNTING HEIGHT 50')
1 MEDIA CONVERTER
1 FOC PATCH PANEL
1 FOC CONNECTOR PANEL
1 BUFFER TUBE FAN OUT KIT
4 FO TERMINATORS

PARCEL DERIVED R/W

EXISTING ITS INFRASTRUCTURE REFERENCE
- FPID 231739-3-52-01

REVISIONS				STATE OF FLORIDA DEPARTMENT OF TRANSPORTATION	TRUCK PARKING AVAILABILITY SYSTEM BROWARD COUNTY, FDOT DISTRICT 4 REST AREA 40490 (60 SPACES) NORTH/SOUTH MILE MARKER 34	SHEET NO. IT-07
DATE	DESCRIPTION	DATE	DESCRIPTION			



REVISIONS			
DATE	DESCRIPTION	DATE	DESCRIPTION

STATE OF FLORIDA DEPARTMENT OF TRANSPORTATION		
ROAD NO.	COUNTY	FINANCIAL PROJECT ID
1-75	COLLIER	440090-1-52-01

TRUCK PARKING AVAILABILITY SYSTEM
BROWARD COUNTY, FDOT DISTRICT 4
TPAS SIGN 40490
SOUTHBOUND MILE MARKER 51.59

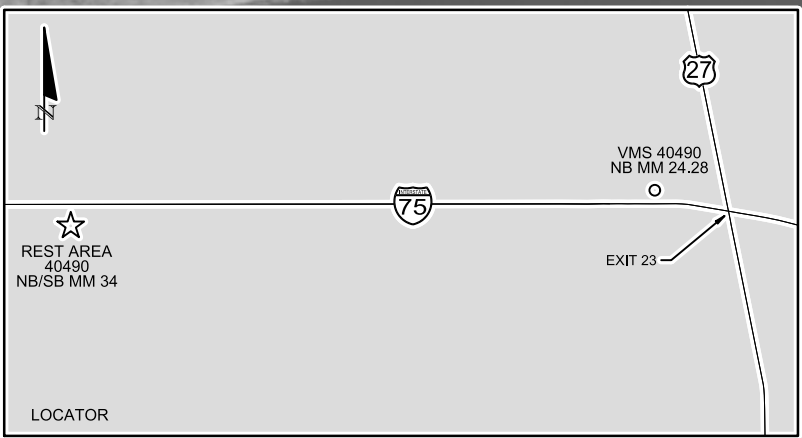
SHEET
NO.

IT-07A

FIBER OPTIC PULL BOX (TYP.)

3-2" CONDUIT (OPEN TRENCH)
 - POWER
 - 1-12 STRAND FOC
 - SPARE

1 MULTI POST STATIC SIGN WITH EMBEDDED DMS
 1 MEDIA CONVERTER
 1 FOC PATCH PANEL
 1 BUFFER TUBE FAN OUT KIT
 1 FOC CONNECTOR PANEL
 4 FO TERMINATORS



PARCEL DERIVED R/W LINE

PARCEL DERIVED R/W LINE

I-75 NB

I-75 SB

3-2" CONDUIT (DIRECTIONAL BORE)
 - POWER
 - 1-12 STRAND FOC
 - SPARE

1 MEDIA CONVERTER
 1 FOC PATCH PANEL
 1 BUFFER TUBE FAN OUT KIT
 1 FOC CONNECTOR PANEL
 4 FO TERMINATORS, IN EXISTING ITS CABINET

INTERCEPT EXISTING FIBER SPLICE VAULT

INSTALL NEW POWER CABLES USING EXISTING CONDUIT ENTERING INTO CABINET

(EXISTING) POWER CONDUIT WITH CONDUCTORS

(EXISTING) ITS FIBER TRUNKLINE

PARCEL DERIVED R/W LINE



TRUCK PARKING AVAILABILITY SIGN WITH 3-DIGIT EMBEDDED DMS AT NB MM 24.28 SOUTH OF REST AREA 40490 (MM 34) (ADJUST SIGN LOCATIONS PER MUTCD SIGN SPACING REQUIREMENTS)
 - 3-DIGIT EMBEDDED DMS
 - POWER FROM NEAREST ITS CABINET
 - POLE MOUNTED NEMA CABINET
 - COMMUNICATION FROM NEAREST ITS CABINET

EXISTING ITS INFRASTRUCTURE REFERENCE - FPID 231739-3-52-01

REVISIONS				STATE OF FLORIDA DEPARTMENT OF TRANSPORTATION			TRUCK PARKING AVAILABILITY SYSTEM BROWARD COUNTY, FDOT DISTRICT 4 TPAS SIGN 40490 NORTHBOUND MILE MARKER 29.68	SHEET NO. IT-07B
DATE	DESCRIPTION	DATE	DESCRIPTION	ROAD NO.	COUNTY	FINANCIAL PROJECT ID		
				I-75	BROWARD	440090-1-52-01		