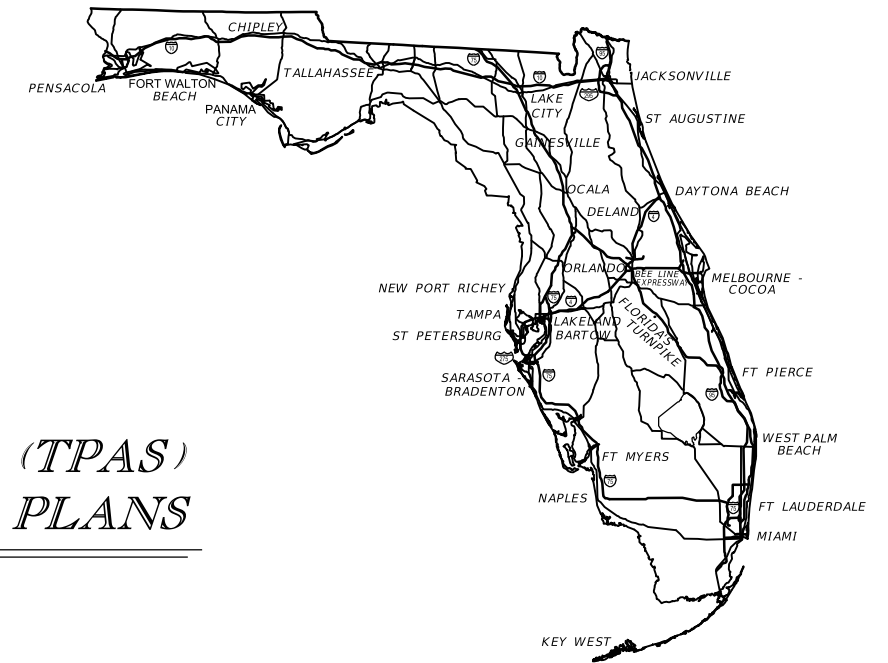


STATE OF FLORIDA  
DEPARTMENT OF TRANSPORTATION

CONTRACT PLANS

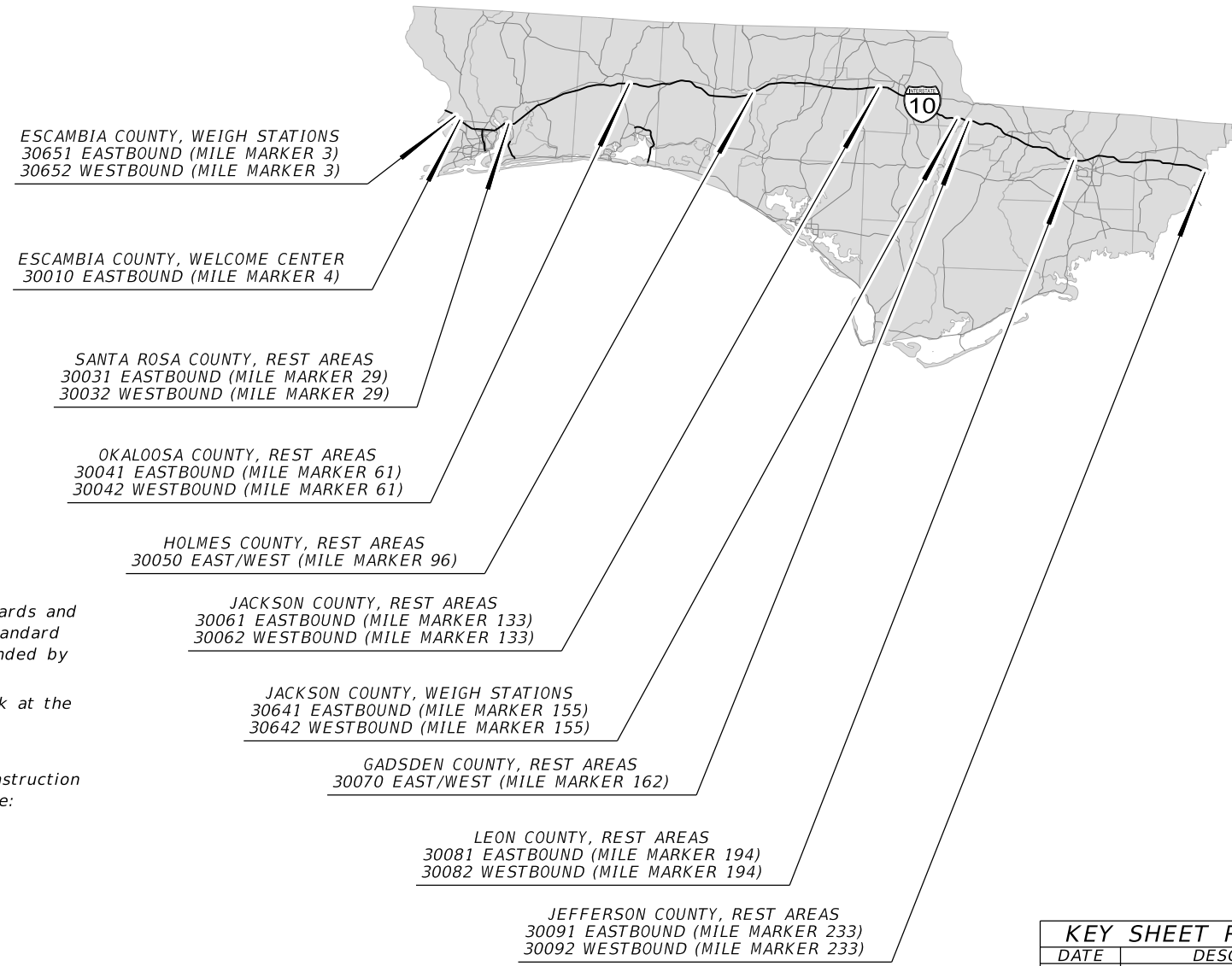
FINANCIAL PROJECT ID 440096-1-52-01  
(FEDERAL FUNDS)



INDEX OF TPAS PLANS

SHEET NO.	SHEET DESCRIPTION
1	KEY SHEET
2	GENERAL NOTES
3	GUIDESIGN WORKSHEET
IT-01 TO IT-15A	ITS PLAN SHEETS

*TRUCK PARKING AVAILABILITY SYSTEMS (TPAS)  
INTELLIGENT TRANSPORTATION SYSTEM PLANS*



ITS SHOP DRAWINGS  
TO BE SUBMITTED TO:

30% PLANS PREPARED BY:

NOTE: THE SCALE OF THESE PLANS MAY  
HAVE CHANGED DUE TO REPRODUCTION.

**GOVERNING STANDARDS AND SPECIFICATIONS:**  
Florida Department of Transportation, 2016 Design Standards and revised Index Drawings as appended herein, and 2016 Standard Specifications for Road and Bridge Construction, as amended by Contract Documents.

For Design Standards click on the "Design Standards" link at the following web site:  
<http://www.dot.state.fl.us/rddesign/DesignStandards>

For the Standard Specifications for Road and Bridge Construction click on the "Specifications" link at the following web site:  
<http://www.dot.state.fl.us/specificationsoffice/StandardSpecifications>

KEY SHEET REVISIONS	
DATE	DESCRIPTION
FOR ILLUSTRATION PURPOSE ONLY	

TRUCK PARKING AVAILABILITY  
SYSTEMS (TPAS) PLANS  
ENGINEER OF RECORD: \_\_\_\_\_

P.E. NO.: \_\_\_\_\_

FDOT PROJECT MANAGER:

FISCAL YEAR	SHEET NO.
16	1

GENERAL NOTES

1. THE LOCATION(S) OF THE UTILITIES SHOWN IN THE PLANS ARE BASED ON LIMITED INVESTIGATION TECHNIQUES, AND MARK-UPS FROM UTILITY OWNERS. ALL UTILITIES SHOULD BE CONSIDERED APPROXIMATE ONLY.
2. THE CONTRACTOR SHALL NOTIFY UTILITY OWNERS LISTED THROUGH SUNSHINE STATE ONE CALL OF FLORIDA (811) TWO BUSINESS DAYS IN ADVANCE OF BEGINNING CONSTRUCTION ON THE JOB SITE.
3. FIBER OPTIC AND POWER PULL BOXES AND CONDUIT SHALL BE LOCATED WITHIN 100 FEET OF THE DEVICE THEY SUPPORT. ITS DEVICE LOCATIONS ARE APPROXIMATE AND MAY REQUIRE RELOCATION BY THE PROJECT ENGINEER. IF DEVICE RELOCATIONS OCCUR FOR ANY REASON, THE PULL BOXES AND CONDUIT SUPPORTING THAT DEVICE SHALL BE RELOCATED AND/OR EXTENDED.
4. INSTALL FIBER OPTIC CONDUIT FOR COMMUNICATION TO DEVICES AS SHOWN IN THE PLANS AND IN ACCORDANCE WITH ALL FDOT STANDARDS FOR CONDUIT INSTALLATION.
5. THE CONTRACTOR SHALL BE RESPONSIBLE FOR FURNISHING AND INSTALLING ABOVE GROUND TUBULAR ROUTE MARKERS PER SECTION 630 OF THE FDOT STANDARD SPECIFICATIONS. MARKERS SHALL BE PLACED AT A MAXIMUM OF 500 FEET AND AT EVERY PULL AND SPLICE BOX. A MARKER LABEL TEMPLATE SHALL BE PROVIDED FOR REVIEW.
6. THE CONDUIT SHALL BE SEALED WITH THE SPECIFIED DUCT PLUG AT THE TIME OF CONDUIT INSTALLATION AND AFTER FINAL FIBER INSTALLATION.
7. ELECTRICAL POWER SERVICE METERS SHALL HAVE A SEPARATE BREAKER FOR EACH ITS CIRCUIT.
8. THE CONTRACTOR SHALL HAND DIG (SOFT DIG) TO A DEPTH OF FOUR (4) FEET WHERE UTILITIES ARE IN CONFLICT PRIOR TO USE OF A MECHANICAL AUGER. ANY POTENTIAL CONFLICTS SHALL BE REPORTED TO THE PROJECT ENGINEER IMMEDIATELY.

UTILITY OWNERS

- AT&T Florida  
Hal Hinote  
850-913-3709
- AT&T Florida  
Steven Kennington  
850-623-3811
- Bright House Network  
Ray Lepley  
850-968-0399
- Bright House Network  
Lynn Miller  
850-892-1318
- Chelco Inc  
Bill Cassenti  
850-307-1230
- Century Link  
Bobby Wiedeman  
850-664-3446
- Century Link - Holmes  
Greg Stevens  
334-677-1393
- City of Milton  
Jerald Ward  
850-983-5400
- East Milton Water System  
Uwe Rogers  
850-623-8750
- Emerald Coast Utility Authority  
Brandon Knight  
850-969-6562
- Farm Hill Utilities  
Mike Gunn  
850-968-2573
- Gulf Power Northern  
Chad Swails  
850-429-2446
- Mediacom Southeast  
Mike Blankinship  
850-698-2386
- Okaloosa Gas  
Essa Rhebi  
850-729-4870
- Pensacola Energy  
Diane Moore  
850-474-5319
- Talquin Electric Company  
Ted Lee  
850-893-6854
- TDS Telecom  
David Parrish  
850-875-5217
- TransCore  
Jonathan Bailey  
850-544-8929
- TransCore  
Valarian Couch  
850-330-1784
- Tri-County Electric Co-op  
Trey Barrs  
850-973-2285
- West Florida Electric Co-op  
Keith Varnum  
850-263-3231

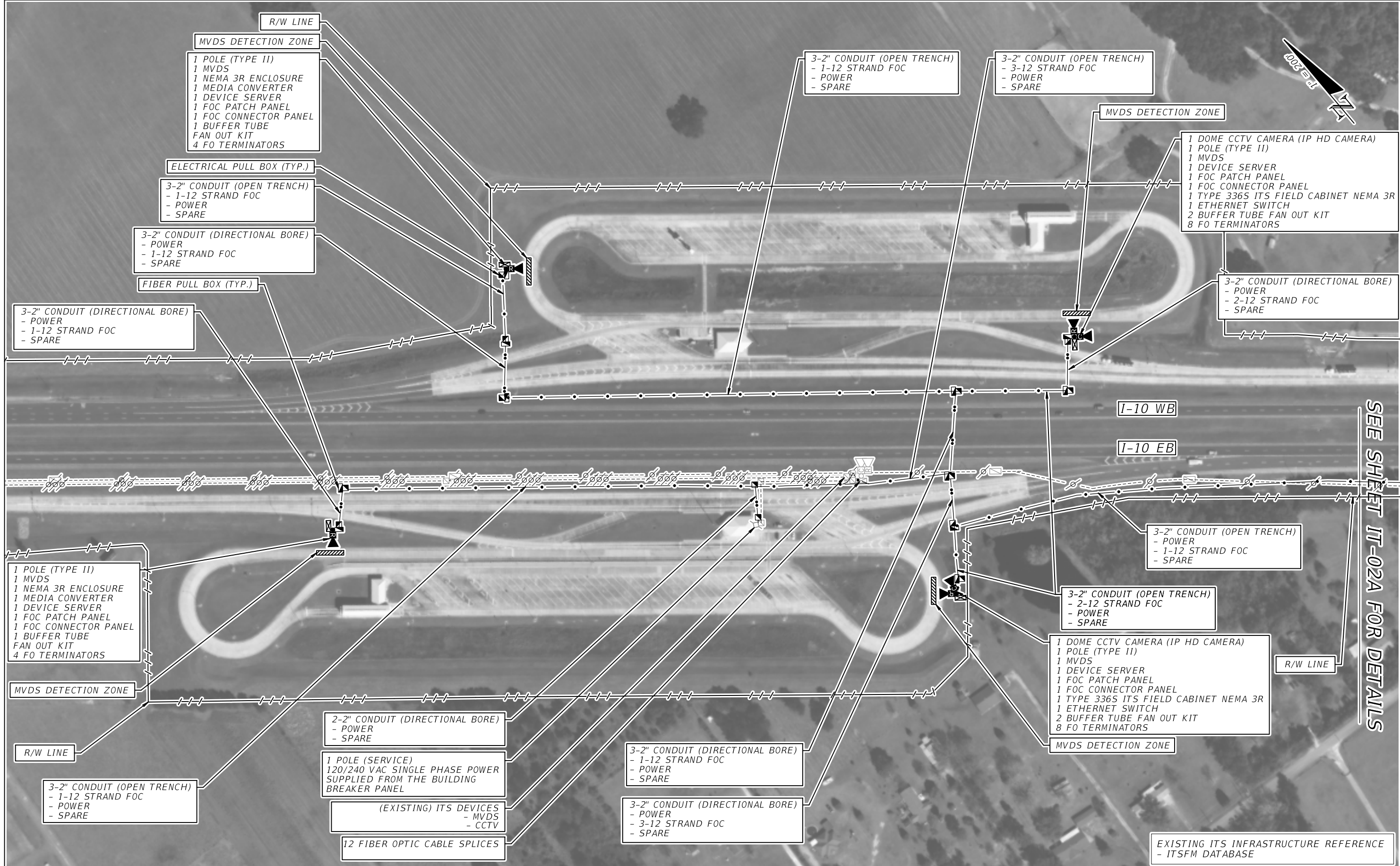
LEGEND

EXISTING	PROPOSED	
		GROUND SENSORS
		REPEATER
		ACCESS POINT
		DETECTION ZONE
		CCTV WITH POLE
		MVDS
		MULTI-POST STATIC SIGN W/ ELECTRICAL DISPLAY SIGN
		BASE MOUNT CABINET
		POLE MOUNT CABINET
		PULL BOX
		FIBER OPTIC PULL BOX
		SPLICE VAULT
		POWER SERVICE
		POLE
		DMS
		CONDUIT, OPEN TRENCH
		CONDUIT, DIRECTIONAL BORE
		FIBER OPTIC RUN
		POWER RUN

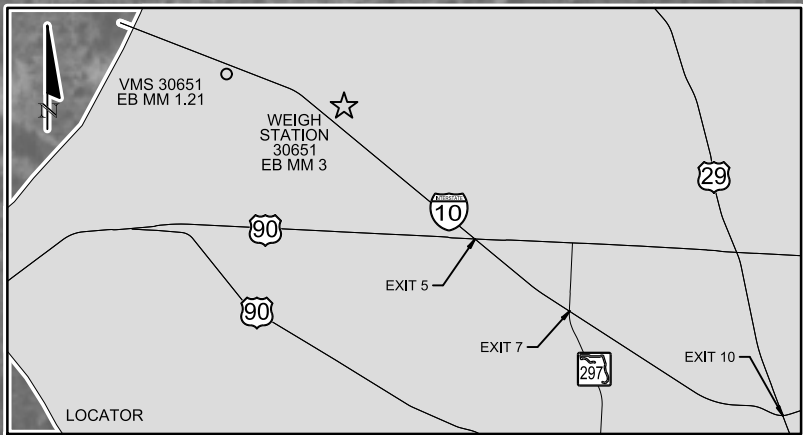
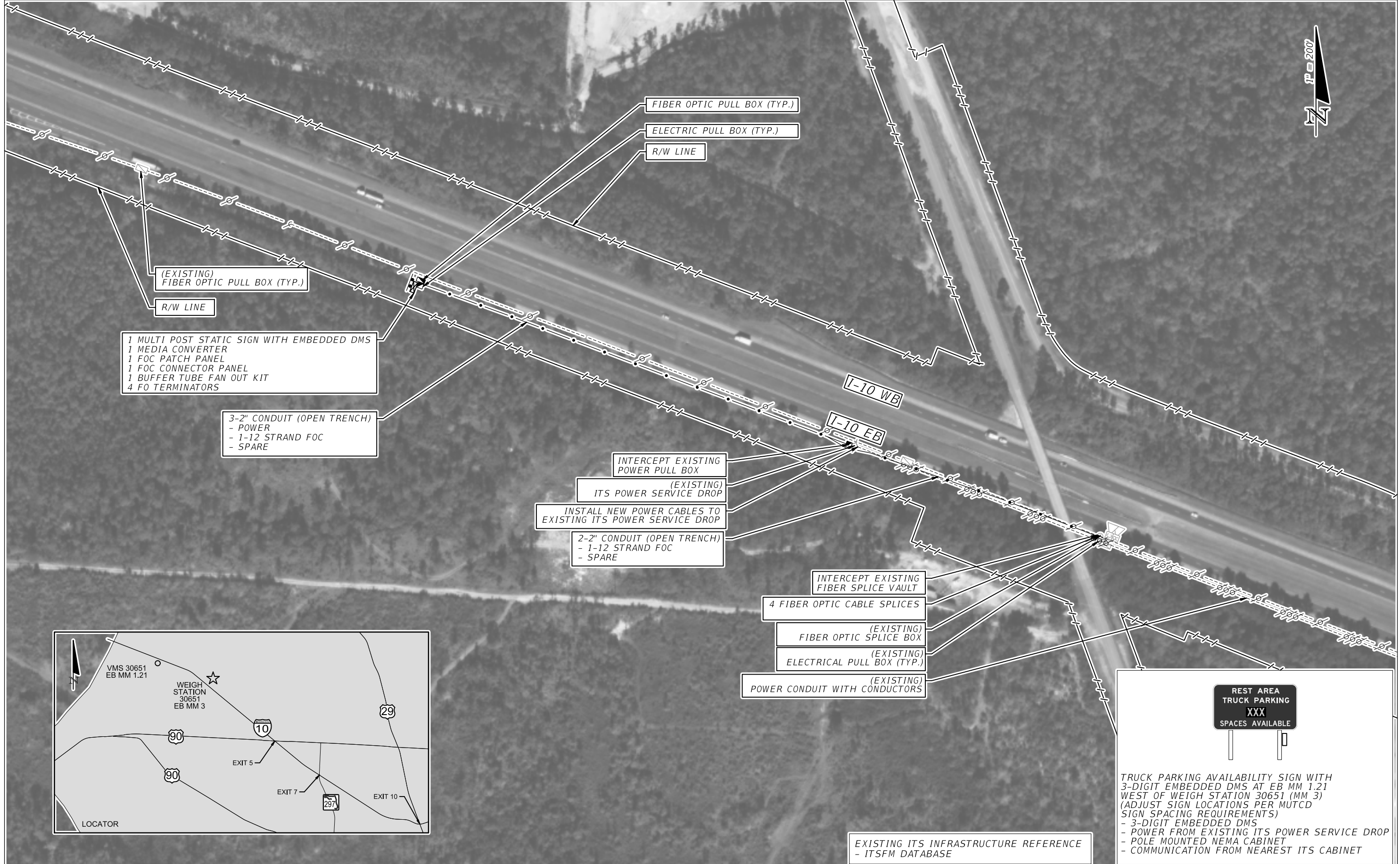
REVISIONS				FOR ILLUSTRATION PURPOSE ONLY	STATE OF FLORIDA DEPARTMENT OF TRANSPORTATION			GENERAL NOTES	SHEET NO.
DATE	DESCRIPTION	DATE	DESCRIPTION		ROAD NO.	COUNTY	FINANCIAL PROJECT ID		2
					VARIES	VARIES	440096-1-52-01		







REVISIONS		DESCRIPTION		STATE OF FLORIDA DEPARTMENT OF TRANSPORTATION			TRUCK PARKING AVAILABILITY SYSTEM ESCAMBIA COUNTY, FDOT DISTRICT 3 WEIGH STATION 30651 (38 SPACES) EASTBOUND MILE MARKER 3 WEIGH STATION 30652 (37 SPACES) WESTBOUND MILE MARKER 3	SHEET NO.  IT-01
DATE	DESCRIPTION	DATE	DESCRIPTION	ROAD NO.	COUNTY	FINANCIAL PROJECT ID		
			FOR ILLUSTRATION PURPOSE ONLY	I-10	ESCAMBIA	440096-1-52-01		



**REST AREA  
TRUCK PARKING  
XXX  
SPACES AVAILABLE**

**TRUCK PARKING AVAILABILITY SIGN WITH 3-DIGIT EMBEDDED DMS AT EB MM 1.21 WEST OF WEIGH STATION 30651 (MM 3) (ADJUST SIGN LOCATIONS PER MUTCD SIGN SPACING REQUIREMENTS)**  
 - 3-DIGIT EMBEDDED DMS  
 - POWER FROM EXISTING ITS POWER SERVICE DROP  
 - POLE MOUNTED NEMA CABINET  
 - COMMUNICATION FROM NEAREST ITS CABINET

EXISTING ITS INFRASTRUCTURE REFERENCE  
- ITSFM DATABASE

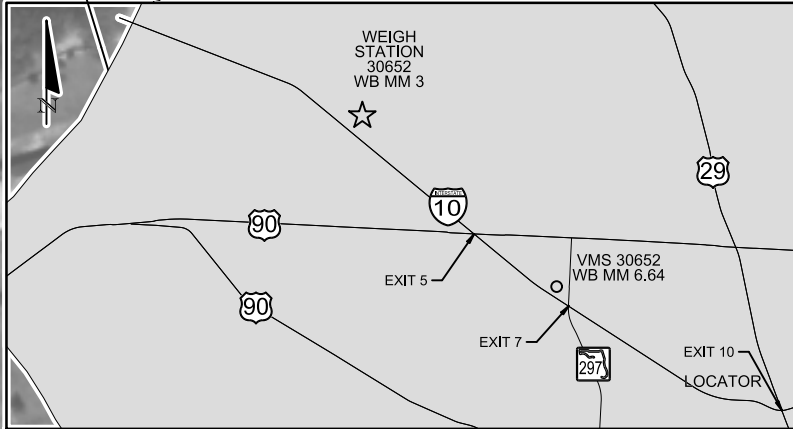
REVISIONS	
DATE	DESCRIPTION
FOR ILLUSTRATION PURPOSE ONLY	

STATE OF FLORIDA DEPARTMENT OF TRANSPORTATION		
ROAD NO.	COUNTY	FINANCIAL PROJECT ID
I-10	ESCAMBIA	440096-1-52-01

**TRUCK PARKING AVAILABILITY SYSTEM**  
 ESCAMBIA COUNTY, FDOT DISTRICT 3  
 TPAS SIGN 30651  
 EASTBOUND MILE MARKER 1.21

**SHEET NO.**  
 IT-01A





EXISTING ITS INFRASTRUCTURE REFERENCE  
- ITSFM DATABASE

REST AREA  
TRUCK PARKING  
XXX  
SPACES AVAILABLE

TRUCK PARKING AVAILABILITY SIGN WITH 3-DIGIT EMBEDDED DMS AT WB MM 6.64 EAST OF WEIGH STATION 30652 (MM 3) (ADJUST SIGN LOCATIONS PER MUTCD SIGN SPACING REQUIREMENTS)

- 3-DIGIT EMBEDDED DMS
- POWER FROM NEAREST ITS CABINET
- POLE MOUNTED NEMA CABINET
- COMMUNICATION FROM NEAREST ITS CABINET

- (EXISTING) ITS FIBER DROP CONDUIT
- (EXISTING) ITS POWER SERVICE DROP
- (EXISTING) FIBER OPTIC SPLICE BOX (TYP.)
- (EXISTING) ELECTRICAL PULL BOX (TYP.)

REVISIONS			
DATE	DESCRIPTION	DATE	DESCRIPTION
FOR ILLUSTRATION PURPOSE ONLY			

STATE OF FLORIDA DEPARTMENT OF TRANSPORTATION		
ROAD NO.	COUNTY	FINANCIAL PROJECT ID
I-10	ESCAMBIA	440096-1-52-01

TRUCK PARKING AVAILABILITY SYSTEM ESCAMBIA COUNTY, FDOT DISTRICT 3 TPAS SIGN 30652 WESTBOUND MILE MARKER 6.64	SHEET NO.  IT-01B
--	-------------------------







(EXISTING)  
FIBER OPTIC PULL BOX (TYP.)

3-2" CONDUIT (OPEN TRENCH)  
- POWER  
- 1-12 STRAND FOC  
- SPARE

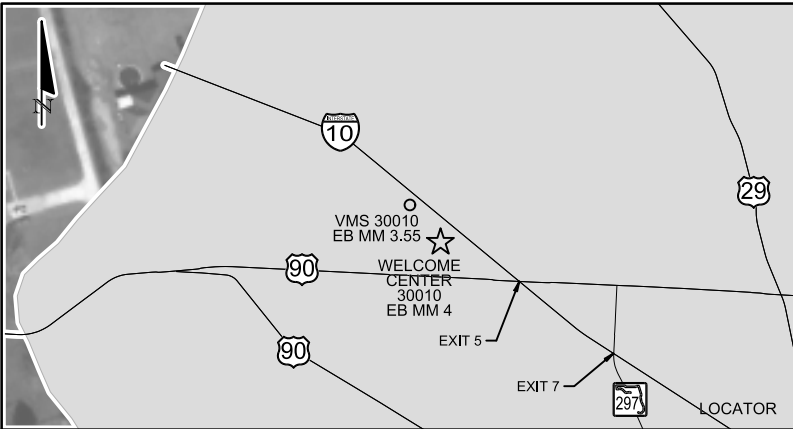
TRUCK PARKING AVAILABILITY SIGN WITH 3-DIGIT EMBEDDED DMS AT EB MM 3.55 WEST OF WELCOME CENTER 30010 (MM 4) (ADJUST SIGN LOCATIONS PER MUTCD SIGN SPACING REQUIREMENTS)

- 3-DIGIT EMBEDDED DMS
- POWER FROM NEAREST ITS CABINET
- POLE MOUNTED NEMA CABINET
- COMMUNICATION FROM NEAREST ITS CABINET

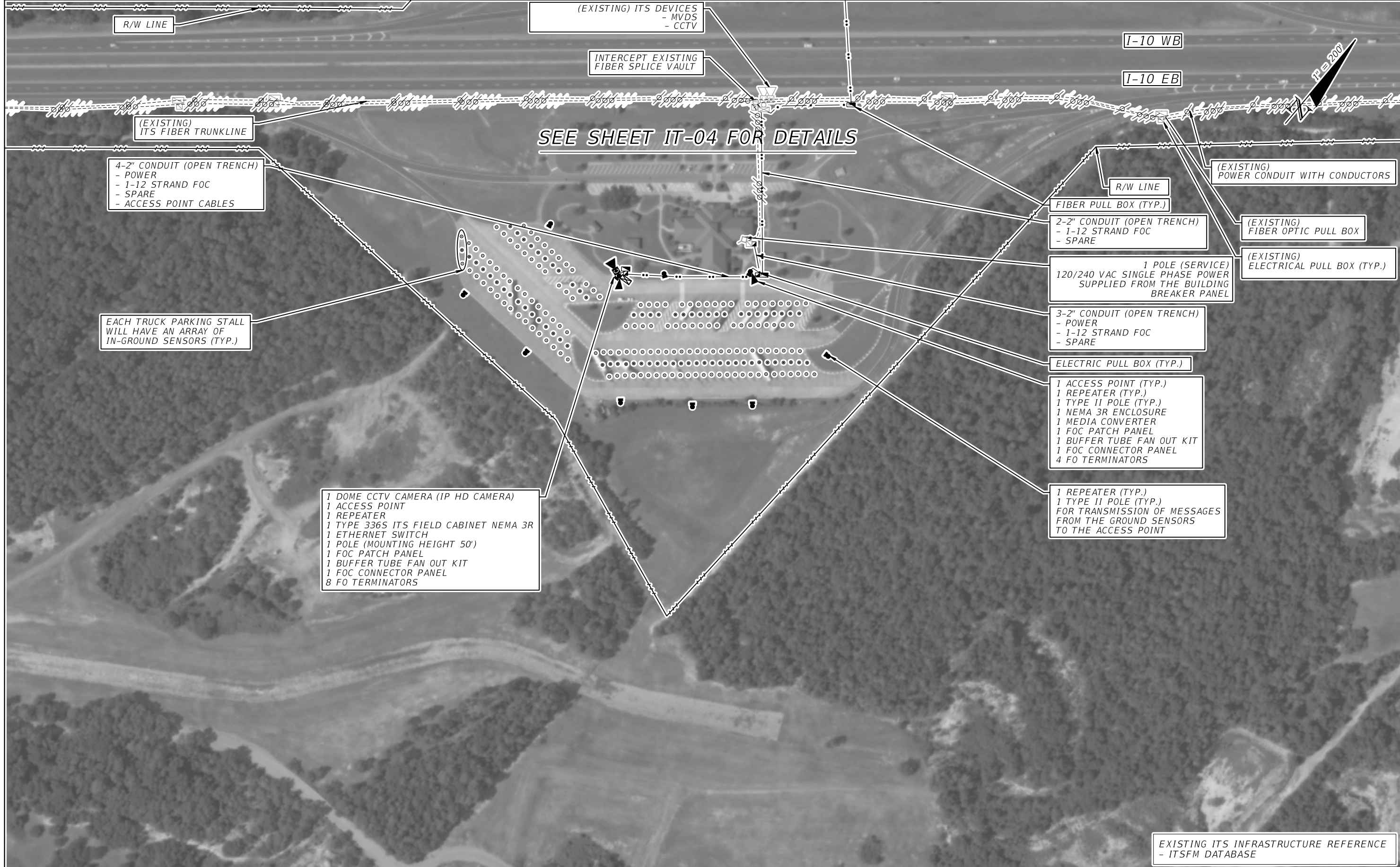
1 MULTI POST STATIC SIGN WITH EMBEDDED DMS  
1 MEDIA CONVERTER  
1 ETHERNET SWITCH  
1 FOC PATCH PANEL  
1 FOC CONNECTOR PANEL  
2 BUFFER TUBE FAN OUT KIT  
4 FO TERMINATORS

EXISTING ITS INFRASTRUCTURE REFERENCE  
- ITSFM DATABASE

(EXISTING)  
ITS FIBER TRUNKLINE



REVISIONS				STATE OF FLORIDA DEPARTMENT OF TRANSPORTATION			TRUCK PARKING AVAILABILITY SYSTEM ESCAMBIA COUNTY, FDOT DISTRICT 3 TPAS SIGN 30010 EASTBOUND MILE MARKER 3.55	SHEET NO.  IT-02A
DATE	DESCRIPTION	DATE	DESCRIPTION	ROAD NO.	COUNTY	FINANCIAL PROJECT ID		
			<b>FOR ILLUSTRATION PURPOSE ONLY</b>	I-10	ESCAMBIA	440096-1-52-01		



4-2" CONDUIT (OPEN TRENCH)  
 - POWER  
 - 1-12 STRAND FOC  
 - SPARE  
 - ACCESS POINT CABLES

EACH TRUCK PARKING STALL  
 WILL HAVE AN ARRAY OF  
 IN-GROUND SENSORS (TYP.)

1 DOME CCTV CAMERA (IP HD CAMERA)  
 1 ACCESS POINT  
 1 REPEATER  
 1 TYPE 336S ITS FIELD CABINET NEMA 3R  
 1 ETHERNET SWITCH  
 1 POLE (MOUNTING HEIGHT 50')  
 1 FOC PATCH PANEL  
 1 BUFFER TUBE FAN OUT KIT  
 1 FOC CONNECTOR PANEL  
 8 FO TERMINATORS

SEE SHEET IT-04 FOR DETAILS

2-2" CONDUIT (OPEN TRENCH)  
 - 1-12 STRAND FOC  
 - SPARE

1 POLE (SERVICE)  
 120/240 VAC SINGLE PHASE POWER  
 SUPPLIED FROM THE BUILDING  
 BREAKER PANEL

3-2" CONDUIT (OPEN TRENCH)  
 - POWER  
 - 1-12 STRAND FOC  
 - SPARE

ELECTRIC PULL BOX (TYP.)

1 ACCESS POINT (TYP.)  
 1 REPEATER (TYP.)  
 1 TYPE II POLE (TYP.)  
 1 NEMA 3R ENCLOSURE  
 1 MEDIA CONVERTER  
 1 FOC PATCH PANEL  
 1 BUFFER TUBE FAN OUT KIT  
 1 FOC CONNECTOR PANEL  
 4 FO TERMINATORS

1 REPEATER (TYP.)  
 1 TYPE II POLE (TYP.)  
 FOR TRANSMISSION OF MESSAGES  
 FROM THE GROUND SENSORS  
 TO THE ACCESS POINT

EXISTING ITS INFRASTRUCTURE REFERENCE  
 - ITSFM DATABASE

REVISIONS			
DATE	DESCRIPTION	DATE	DESCRIPTION
FOR ILLUSTRATION PURPOSE ONLY			

STATE OF FLORIDA DEPARTMENT OF TRANSPORTATION		
ROAD NO.	COUNTY	FINANCIAL PROJECT ID
I-10	SANTA ROSA	440096-1-52-01

TRUCK PARKING AVAILABILITY SYSTEM  
 SANTA ROSA COUNTY, FDOT DISTRICT 3  
 REST AREA 30031 (65 SPACES)  
 EASTBOUND MILE MARKER 29

SHEET NO.  
IT-03





1 MULTI POST STATIC SIGN WITH EMBEDDED DMS  
 1 FIBER PATCH PANEL  
 1 MEDIA CONVERTER  
 1 BUFFER TUBE FAN OUT KIT  
 1 FOC CONNECTOR PANEL  
 4 FO TERMINATORS

3-2" CONDUIT (OPEN TRENCH)  
 - POWER  
 - 1-12 STRAND FOC  
 - SPARE

(EXISTING)  
 POWER CONDUIT WITH  
 CONDUCTOR CABLES

(EXISTING)  
 FIBER OPTIC TRUNKLINE

ELECTRIC PULL BOX (TYP.)

FIBER OPTIC PULL BOX (TYP.)

INTERCEPT EXISTING  
 FIBER SPLICE VAULT

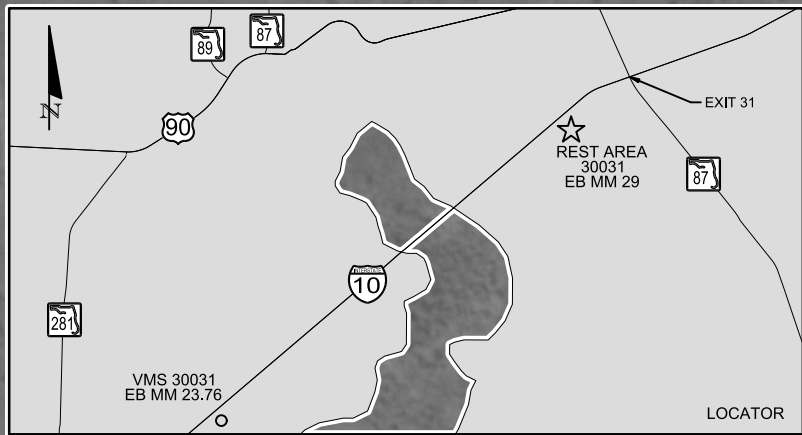
INTERCEPT EXISTING  
 ELECTRICAL PULL BOX

1 MEDIA CONVERTER  
 1 FOC PATCH PANEL  
 1 BUFFER TUBE FAN OUT KIT  
 1 FOC CONNECTOR PANEL  
 4 FO TERMINATORS, IN EXISTING ITS CABINET

INSTALL NEW POWER AND COMMUNICATION CABLES  
 USING EXISTING CONDUIT ENTERING INTO CABINET

R/W LINE

R/W LINE



REST AREA  
 TRUCK PARKING  
 XXX  
 SPACES AVAILABLE

TRUCK PARKING AVAILABILITY SIGN WITH  
 3-DIGIT EMBEDDED DMS AT EB MM 23.76  
 WEST OF REST AREA 30031 (MM 29)  
 (ADJUST SIGN LOCATIONS PER MUTCD  
 SIGN SPACING REQUIREMENTS)  
 - 3-DIGIT EMBEDDED DMS  
 - POWER FROM NEAREST ITS CABINET  
 - POLE MOUNTED NEMA CABINET  
 - COMMUNICATION FROM NEAREST ITS CABINET

EXISTING ITS INFRASTRUCTURE REFERENCE  
 - ITSFM DATABASE

REVISIONS				STATE OF FLORIDA DEPARTMENT OF TRANSPORTATION			TRUCK PARKING AVAILABILITY SYSTEM SANTA ROSA COUNTY, FDOT DISTRICT 3 TPAS SIGN 30031 EASTBOUND MILE MARKER 23.76	SHEET NO.  IT-03A
DATE	DESCRIPTION	DATE	DESCRIPTION	ROAD NO.	COUNTY	FINANCIAL PROJECT ID		
				1-10	SANTA ROSA	440096-1-52-01		

FOR ILLUSTRATION  
 PURPOSE ONLY



EXISTING ITS INFRASTRUCTURE REFERENCE  
- FPID ITSFM DATABASE



4-2" CONDUIT (OPEN TRENCH)  
- POWER  
- 2-12 STRAND FOC  
- SPARE  
- ACCESS POINT CABLES

1 DOME CCTV CAMERA (IP HD CAMERA)  
1 ACCESS POINT  
1 REPEATER  
1 TYPE 336S ITS FIELD CABINET NEMA 3R  
1 POLE (MOUNTING HEIGHT 50')  
1 ETHERNET SWITCH  
1 FOC PATCH PANEL  
1 BUFFER TUBE FAN OUT KIT  
1 FOC CONNECTOR PANEL  
8 FO TERMINATORS

1 REPEATER (TYP.)  
1 TYPE II POLE (TYP.)  
FOR TRANSMISSION OF MESSAGES  
FROM THE GROUND SENSORS  
TO THE ACCESS POINT

EACH TRUCK PARKING STALL  
WILL HAVE AN ARRAY OF  
IN-GROUND SENSORS (TYP.)

1 ACCESS POINT (TYP.)  
1 REPEATER (TYP.)  
1 TYPE II POLE (TYP.)  
1 NEMA 3R ENCLOSURE  
1 MEDIA CONVERTER  
1 FOC PATCH PANEL  
1 BUFFER TUBE FAN OUT KIT  
1 FOC CONNECTOR PANEL  
4 FO TERMINATORS

3-2" CONDUIT (OPEN TRENCH)  
- POWER  
- 1-12 STRAND FOC  
- SPARE

ELECTRIC PULL BOX (TYP.)

2-2" CONDUIT (OPEN TRENCH)  
- 1-12 STRAND FOC  
- SPARE

(EXISTING) ITS DEVICES  
- MVDS  
- CCTV

8 FIBER OPTIC CABLE SPLICES

INTERCEPT EXISTING  
FIBER SPLICE VAULT

R/W LINE

(EXISTING)  
ITS FIBER TRUNKLINE

I-10 WB

I-10 EB

SEE SHEET IT-03 FOR DETAILS

FIBER PULL BOX (TYP.)

2-2" CONDUIT (OPEN TRENCH)  
- 1-12 STRAND FOC  
- SPARE

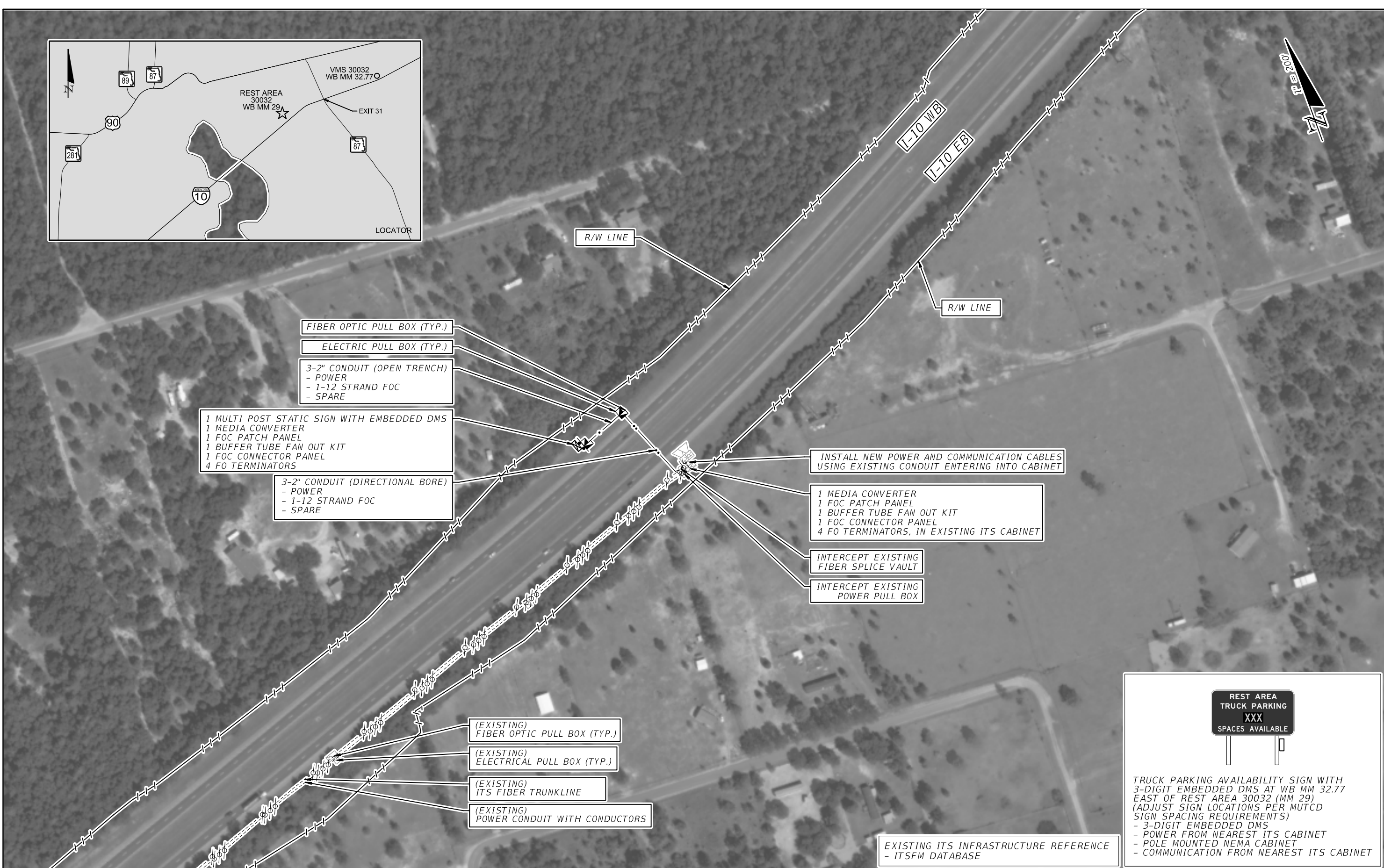
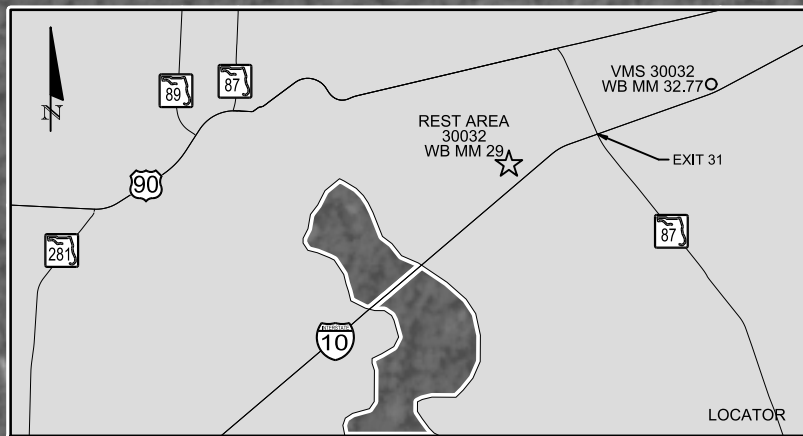
(EXISTING)  
POWER CONDUIT WITH CONDUCTORS

1 POLE (SERVICE)  
120/240 VAC SINGLE PHASE POWER  
SUPPLIED FROM THE BUILDING  
BREAKER PANEL

2-2" CONDUIT (DIRECTIONAL BORE)  
- 1-12 STRAND FOC  
- SPARE

R/W LINE

DATE		DESCRIPTION		REVISIONS		STATE OF FLORIDA DEPARTMENT OF TRANSPORTATION			TRUCK PARKING AVAILABILITY SYSTEM SANTA ROSA COUNTY, FDOT DISTRICT 3 REST AREA 30032 (67 SPACES) WESTBOUND MILE MARKER 29	SHEET NO.
DATE	DESCRIPTION	DATE	DESCRIPTION	ROAD NO.	COUNTY	FINANCIAL PROJECT ID				
										IT-04
FOR ILLUSTRATION PURPOSE ONLY										



**REST AREA  
TRUCK PARKING  
XXX  
SPACES AVAILABLE**

TRUCK PARKING AVAILABILITY SIGN WITH  
 3-DIGIT EMBEDDED DMS AT WB MM 32.77  
 EAST OF REST AREA 30032 (MM 29)  
 (ADJUST SIGN LOCATIONS PER MUTCD  
 SIGN SPACING REQUIREMENTS)  
 - 3-DIGIT EMBEDDED DMS  
 - POWER FROM NEAREST ITS CABINET  
 - POLE MOUNTED NEMA CABINET  
 - COMMUNICATION FROM NEAREST ITS CABINET

EXISTING ITS INFRASTRUCTURE REFERENCE  
- ITSFM DATABASE

REVISIONS				STATE OF FLORIDA DEPARTMENT OF TRANSPORTATION			TRUCK PARKING AVAILABILITY SYSTEM SANTA ROSA COUNTY, FDOT DISTRICT 3 TPAS SIGN 30032 WESTBOUND MILE MARKER 32.77		SHEET NO.
DATE	DESCRIPTION	DATE	DESCRIPTION	ROAD NO.	COUNTY	FINANCIAL PROJECT ID			
			<b>FOR ILLUSTRATION PURPOSE ONLY</b>	I-10	SANTA ROSA	440096-1-52-01			IT-04A



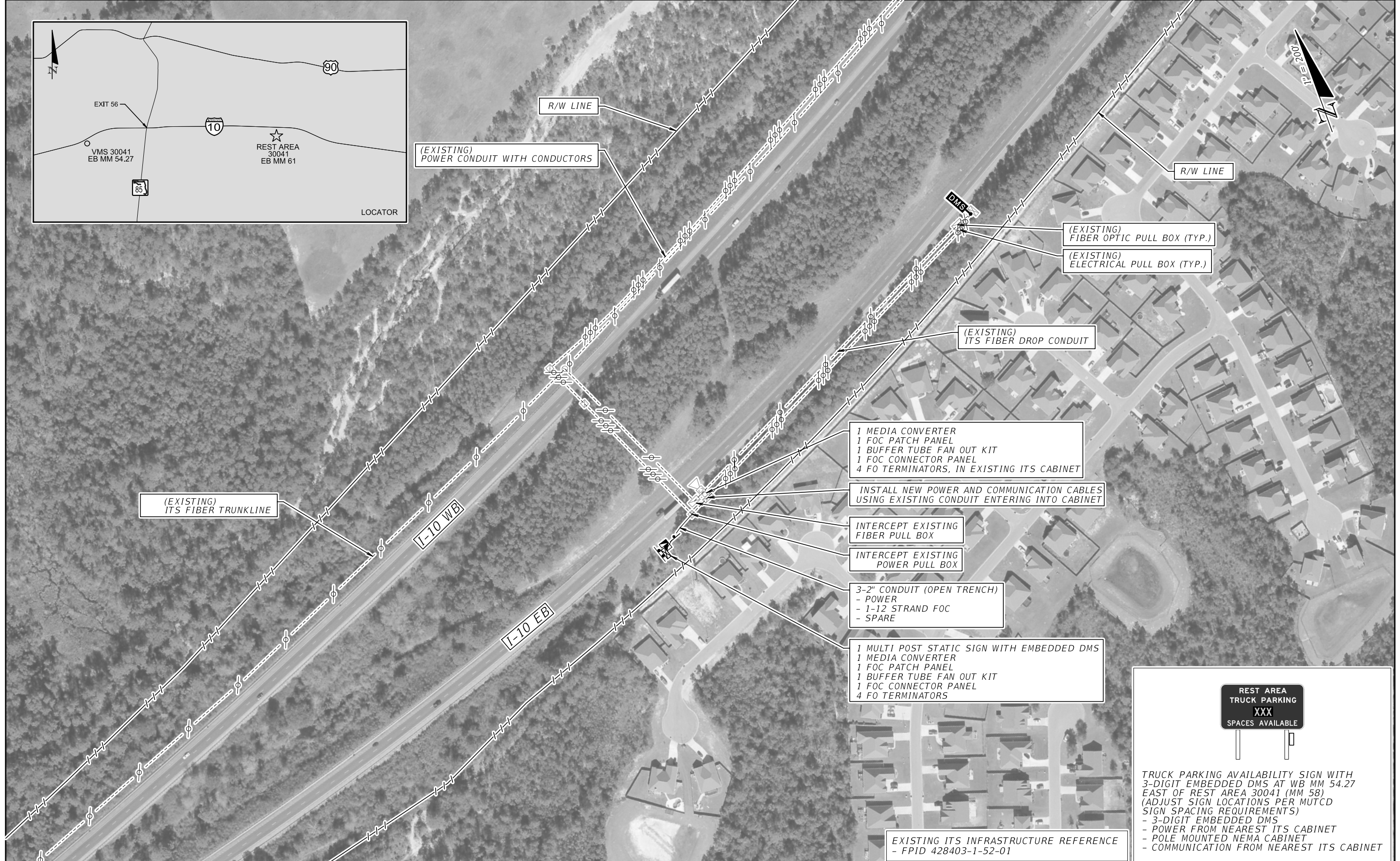
SEE SHEET IT-06 FOR DETAILS



EXISTING ITS INFRASTRUCTURE REFERENCE  
- FPID 428403-1-52-01

REVISIONS				STATE OF FLORIDA DEPARTMENT OF TRANSPORTATION			TRUCK PARKING AVAILABILITY SYSTEM OKALOOSA COUNTY, FDOT DISTRICT 3 REST AREA 30041 (48 SPACES) EASTBOUND MILE MARKER 61	SHEET NO.  IT-05
DATE	DESCRIPTION	DATE	DESCRIPTION	ROAD NO.	COUNTY	FINANCIAL PROJECT ID		
			FOR ILLUSTRATION PURPOSE ONLY	I-10	OKALOOSA	440096-1-52-01		





**REST AREA  
TRUCK PARKING  
XXX  
SPACES AVAILABLE**

**TRUCK PARKING AVAILABILITY SIGN WITH 3-DIGIT EMBEDDED DMS AT WB MM 54.27 EAST OF REST AREA 30041 (MM 58) (ADJUST SIGN LOCATIONS PER MUTCD SIGN SPACING REQUIREMENTS)**  
 - 3-DIGIT EMBEDDED DMS  
 - POWER FROM NEAREST ITS CABINET  
 - POLE MOUNTED NEMA CABINET  
 - COMMUNICATION FROM NEAREST ITS CABINET

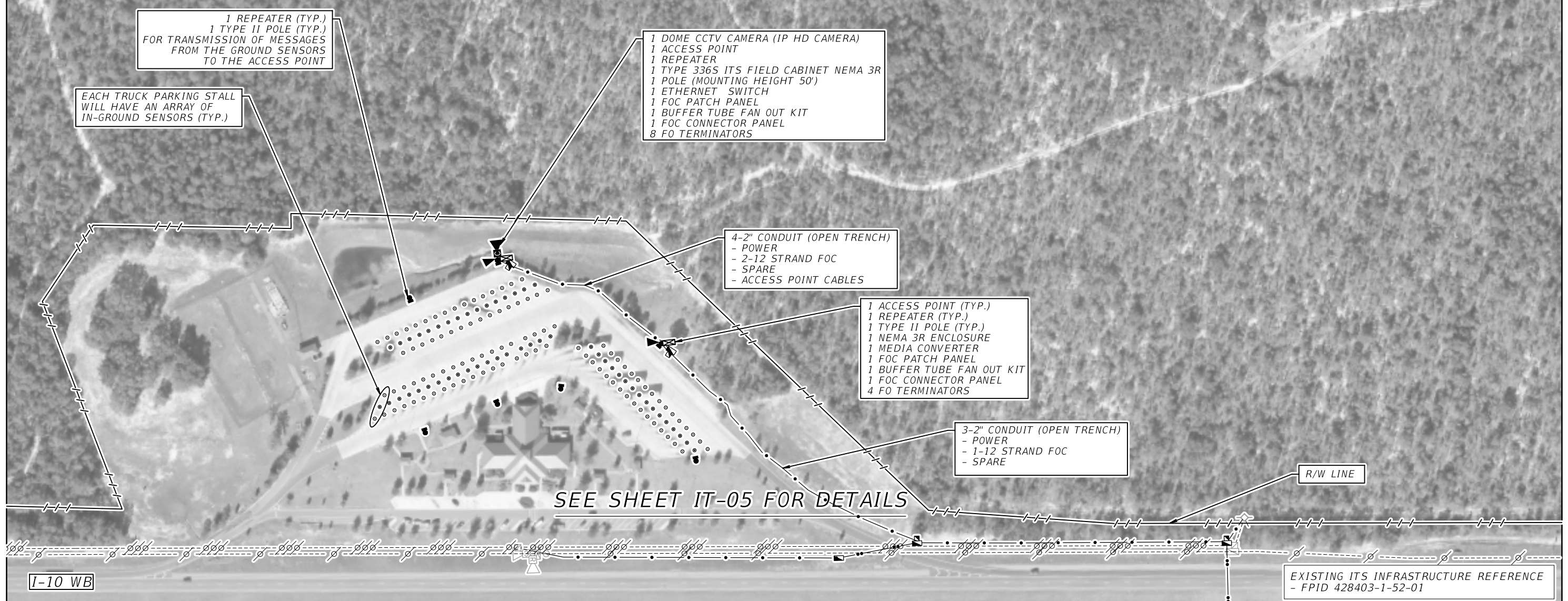
**EXISTING ITS INFRASTRUCTURE REFERENCE**  
 - FPID 428403-1-52-01

REVISIONS	
DATE	DESCRIPTION
FOR ILLUSTRATION PURPOSE ONLY	

<b>STATE OF FLORIDA DEPARTMENT OF TRANSPORTATION</b>		
ROAD NO.	COUNTY	FINANCIAL PROJECT ID
I-10	OKALOOSA	440096-1-52-01

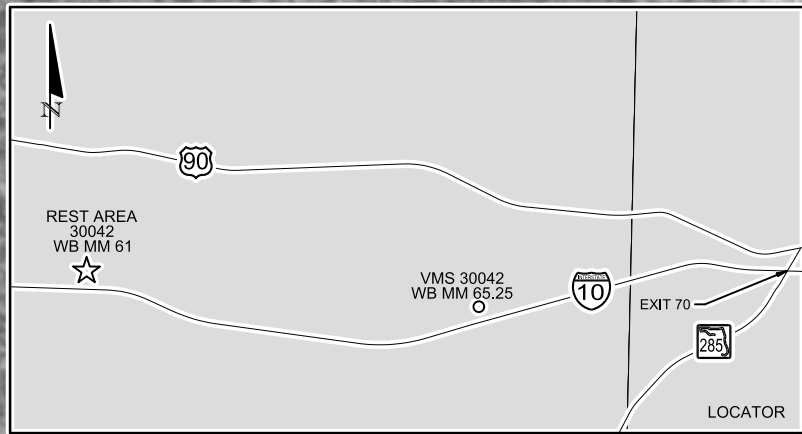
<b>TRUCK PARKING AVAILABILITY SYSTEM</b> OKALOOSA COUNTY, FDOT DISTRICT 3 TPAS SIGN 30041 EASTBOUND MILE MARKER 54.27	<b>SHEET NO.</b>  IT-05A
--	--------------------------------





REVISIONS				STATE OF FLORIDA DEPARTMENT OF TRANSPORTATION			TRUCK PARKING AVAILABILITY SYSTEM OKALOOSA COUNTY, FDOT DISTRICT 3 REST AREA 30042 (52 SPACES) WESTBOUND MILE MARKER 61	SHEET NO.
DATE	DESCRIPTION	DATE	DESCRIPTION	ROAD NO.	COUNTY	FINANCIAL PROJECT ID		IT-06
			<b>FOR ILLUSTRATION PURPOSE ONLY</b>	I-10	OKALOOSA	440096-1-52-01		





INTERCEPT EXISTING FIBER SPLICE VAULT

1 MEDIA CONVERTER  
1 FOC PATCH PANEL  
1 BUFFER TUBE FAN OUT KIT  
1 FOC CONNECTOR PANEL  
4 FO TERMINATORS, IN EXISTING ITS CABINET

INSTALL NEW COMMUNICATION CABLES USING EXISTING CONDUIT ENTERING INTO CABINET

2-2" CONDUIT (OPEN TRENCH)  
- 1-12 STRAND FOC  
- SPARE

FIBER OPTIC PULL BOX (TYP.)

1 MULTI POST STATIC SIGN WITH EMBEDDED DMS  
1 MEDIA CONVERTER  
1 FOC PATCH PANEL  
1 BUFFER TUBE FAN OUT KIT  
1 FOC CONNECTOR PANEL  
4 FO TERMINATORS

R/W LINE

R/W LINE

(EXISTING) ITS FIBER TRUNKLINE

I-10 WB

I-10 EB

(EXISTING) ITS FIBER DROP CONDUIT

(EXISTING) POWER CONDUIT WITH CONDUCTORS

(EXISTING) FIBER OPTIC SPLICE BOX (TYP.)

(EXISTING) ELECTRICAL PULL BOX (TYP.)

WEIGH STATION  
TRUCK PARKING  
XXX  
SPACES AVAILABLE

TRUCK PARKING AVAILABILITY SIGN WITH 3-DIGIT EMBEDDED DMS AT WB MM 65.25 EAST OF REST AREA 30042 (MM 61) (ADJUST SIGN LOCATIONS PER MUTCD SIGN SPACING REQUIREMENTS)  
- 3-DIGIT EMBEDDED DMS  
- SOLAR POWER FOR EMBEDDED DMS  
- POLE MOUNTED NEMA CABINET  
- COMMUNICATION FROM NEAREST ITS CABINET

EXISTING ITS INFRASTRUCTURE REFERENCE  
- FPID 428403-1-52-01

REVISIONS		DESCRIPTION		STATE OF FLORIDA DEPARTMENT OF TRANSPORTATION			TRUCK PARKING AVAILABILITY SYSTEM OKALOOSA COUNTY, FDOT DISTRICT 3 TPAS SIGN 30042 WESTBOUND MILE MARKER 65.25	SHEET NO. IT-06A
DATE	DESCRIPTION	DATE	DESCRIPTION	ROAD NO.	COUNTY	FINANCIAL PROJECT ID		
			FOR ILLUSTRATION PURPOSE ONLY	I-10	OKALOOSA	440096-1-52-01		





- 1 DOME CCTV CAMERA (IP HD CAMERA)
- 1 ACCESS POINT
- 1 REPEATER
- 1 TYPE 336S ITS FIELD CABINET NEMA 3R
- 1 POLE (MOUNTING HEIGHT 50')
- 1 ETHERNET SWITCH
- 1 FOC PATCH PANEL
- 1 BUFFER TUBE FAN OUT KIT
- 1 FOC CONNECTOR PANEL
- 4 FO TERMINATORS

1 REPEATER (TYP.)  
 1 TYPE II POLE (TYP.)  
 FOR TRANSMISSION OF MESSAGES  
 FROM THE GROUND SENSORS  
 TO THE ACCESS POINT

EACH TRUCK PARKING STALL  
 WILL HAVE AN ARRAY OF  
 IN-GROUND SENSORS (TYP.)

REVISIONS		DESCRIPTION	
DATE	DESCRIPTION	DATE	DESCRIPTION
FOR ILLUSTRATION PURPOSE ONLY			

STATE OF FLORIDA DEPARTMENT OF TRANSPORTATION		
ROAD NO.	COUNTY	FINANCIAL PROJECT ID
I-10	HOLMES	440096-1-52-01

TRUCK PARKING AVAILABILITY SYSTEM HOLMES COUNTY, FDOT DISTRICT 3 REST AREA 30050 (14 SPACES) EAST/WEST MILE MARKER 96	SHEET NO.  IT-07
--	------------------------





EXISTING ITS INFRASTRUCTURE REFERENCE  
- FPID 428403-1-52-01

**REST AREA TRUCK PARKING**  
XXX  
SPACES AVAILABLE

TRUCK PARKING AVAILABILITY SIGN WITH 3-DIGIT EMBEDDED DMS AT WB MM 92.22 WEST OF REST AREA 30050 (MM 96) (ADJUST SIGN LOCATIONS PER MUTCD SIGN SPACING REQUIREMENTS)  
- 3-DIGIT EMBEDDED DMS  
- POWER FROM NEAREST ITS CABINET  
- POLE MOUNTED NEMA CABINET  
- COMMUNICATION FROM NEAREST ITS CABINET

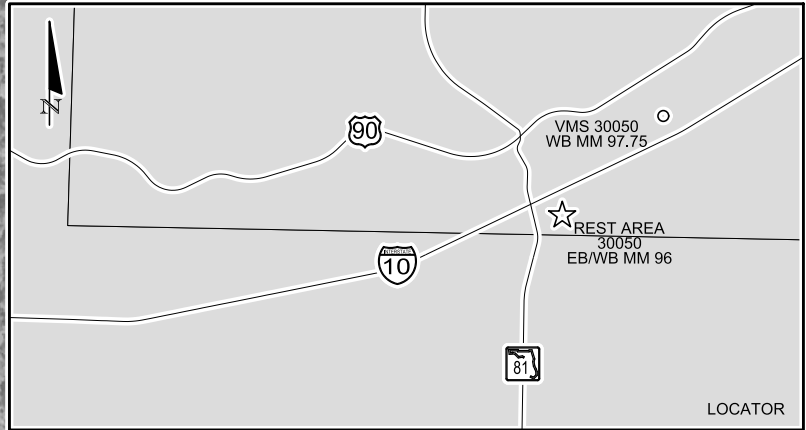
REVISIONS			
DATE	DESCRIPTION	DATE	DESCRIPTION
<b>FOR ILLUSTRATION PURPOSE ONLY</b>			

<b>STATE OF FLORIDA DEPARTMENT OF TRANSPORTATION</b>		
ROAD NO.	COUNTY	FINANCIAL PROJECT ID
I-10	WALTON	440096-1-52-01

TRUCK PARKING AVAILABILITY SYSTEM  
WALTON COUNTY, FDOT DISTRICT 3  
TPAS SIGN 30050  
EASTBOUND MILE MARKER 92.22

SHEET NO.  
IT-07A





**REST AREA  
TRUCK PARKING  
XXX  
SPACES AVAILABLE**

TRUCK PARKING AVAILABILITY SIGN WITH  
 3-DIGIT EMBEDDED DMS AT WB MM 97.75  
 EAST OF REST AREA 30050 (MM 96)  
 (ADJUST SIGN LOCATIONS PER MUTCD  
 SIGN SPACING REQUIREMENTS)  
 - 3-DIGIT EMBEDDED DMS  
 - POWER FROM NEAREST ITS POWER SERVICE DROP  
 - POLE MOUNTED NEMA CABINET  
 - COMMUNICATION FROM NEAREST SPLICE VAULT

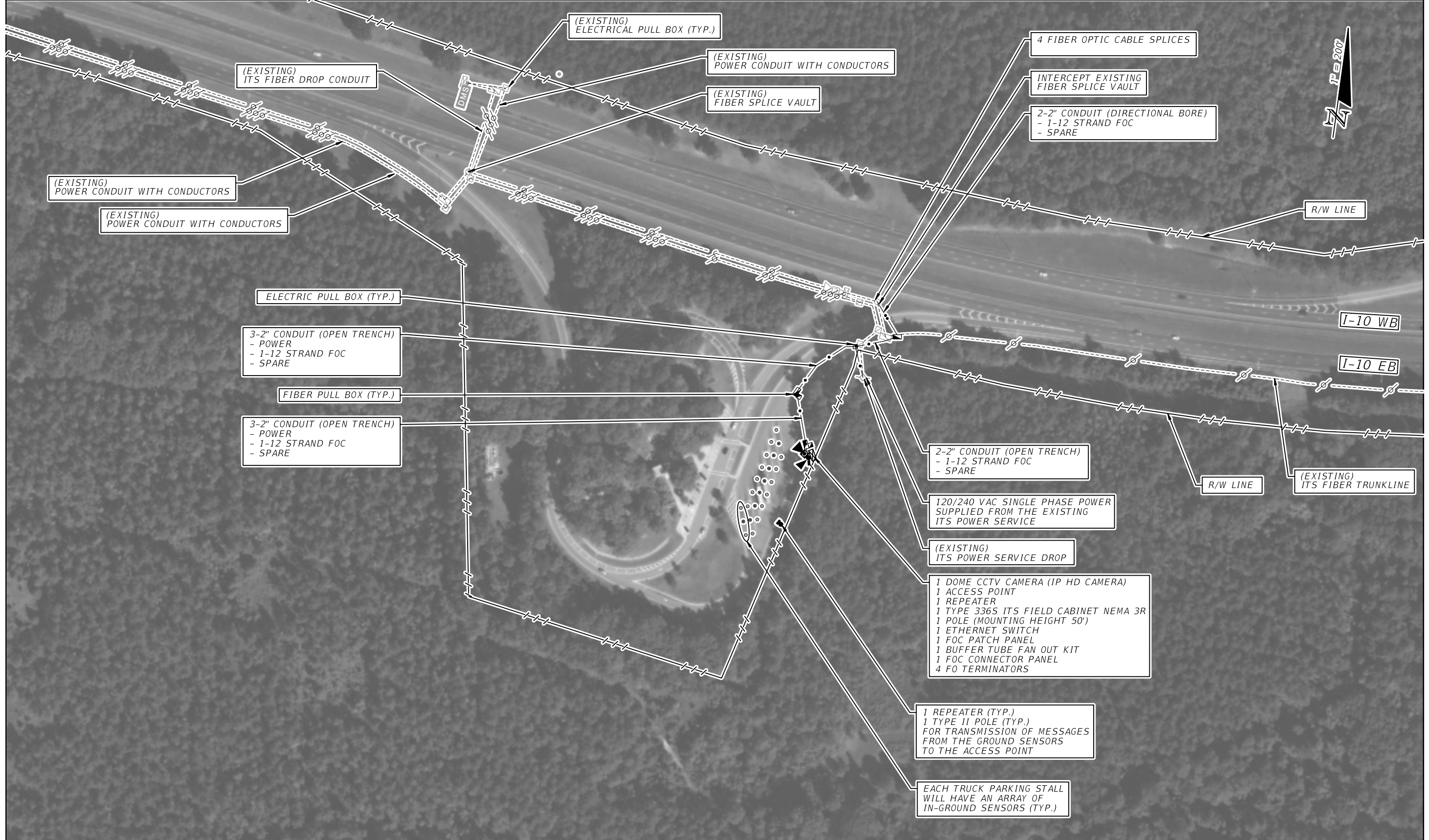
EXISTING ITS INFRASTRUCTURE REFERENCE  
- FPID 428403-1-52-01

REVISIONS			
DATE	DESCRIPTION	DATE	DESCRIPTION
FOR ILLUSTRATION PURPOSE ONLY			

STATE OF FLORIDA DEPARTMENT OF TRANSPORTATION		
ROAD NO.	COUNTY	FINANCIAL PROJECT ID
I-10	HOLMES	440096-1-52-01

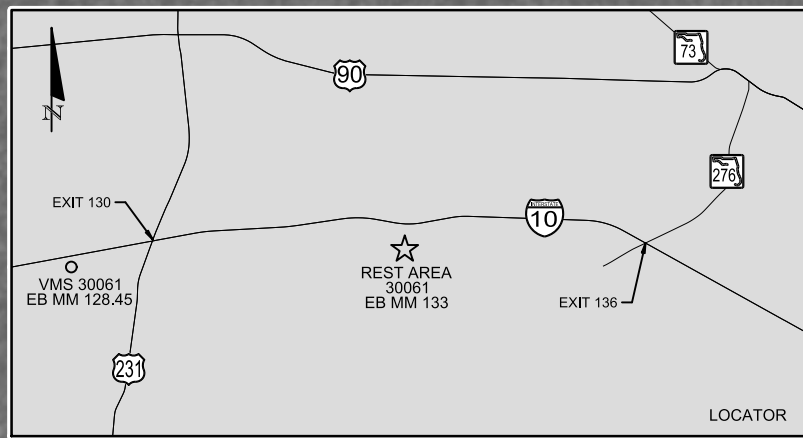
TRUCK PARKING AVAILABILITY SYSTEM HOLMES COUNTY, FDOT DISTRICT 3 TPAS SIGN 30050 WESTBOUND MILE MARKER 97.75	SHEET NO.  IT-07B
---	----------------------------





EXISTING ITS INFRASTRUCTURE REFERENCE  
- FPID 428403-1-52-01

REVISIONS				STATE OF FLORIDA DEPARTMENT OF TRANSPORTATION	TRUCK PARKING AVAILABILITY SYSTEM JACKSON COUNTY, FDOT DISTRICT 3 REST AREA 30061 (8 SPACES) EASTBOUND MILE MARKER 133	SHEET NO.  IT-08
DATE	DESCRIPTION	DATE	DESCRIPTION			
			FOR ILLUSTRATION PURPOSE ONLY			



(EXISTING)  
ELECTRICAL PULL BOX (TYP.)

(EXISTING)  
ITS POWER SERVICE DROP

FIBER OPTIC PULL BOX (TYP.)

ELECTRIC PULL BOX (TYP.)

1 MULTI POST STATIC SIGN WITH EMBEDDED DMS  
1 MEDIA CONVERTER  
1 FOC PATCH PANEL  
1 BUFFER TUBE FAN OUT KIT  
1 FOC CONNECTOR PANEL  
4 FO TERMINATORS

(EXISTING)  
POWER CONDUIT WITH CONDUCTORS

3-2" CONDUIT (OPEN TRENCH)  
- POWER  
- 1-12 STRAND FOC  
- SPARE

INTERCEPT EXISTING  
FIBER SPLICE VAULT

INTERCEPT EXISTING  
POWER PULL BOX

INSTALL NEW POWER AND COMMUNICATION CABLES  
USING EXISTING CONDUIT ENTERING INTO CABINET

1 MEDIA CONVERTER  
1 FOC PATCH PANEL  
1 BUFFER TUBE FAN OUT KIT  
1 FOC CONNECTOR PANEL  
4 FO TERMINATORS, IN EXISTING ITS CABINET

(EXISTING)  
ITS FIBER TRUNKLINE

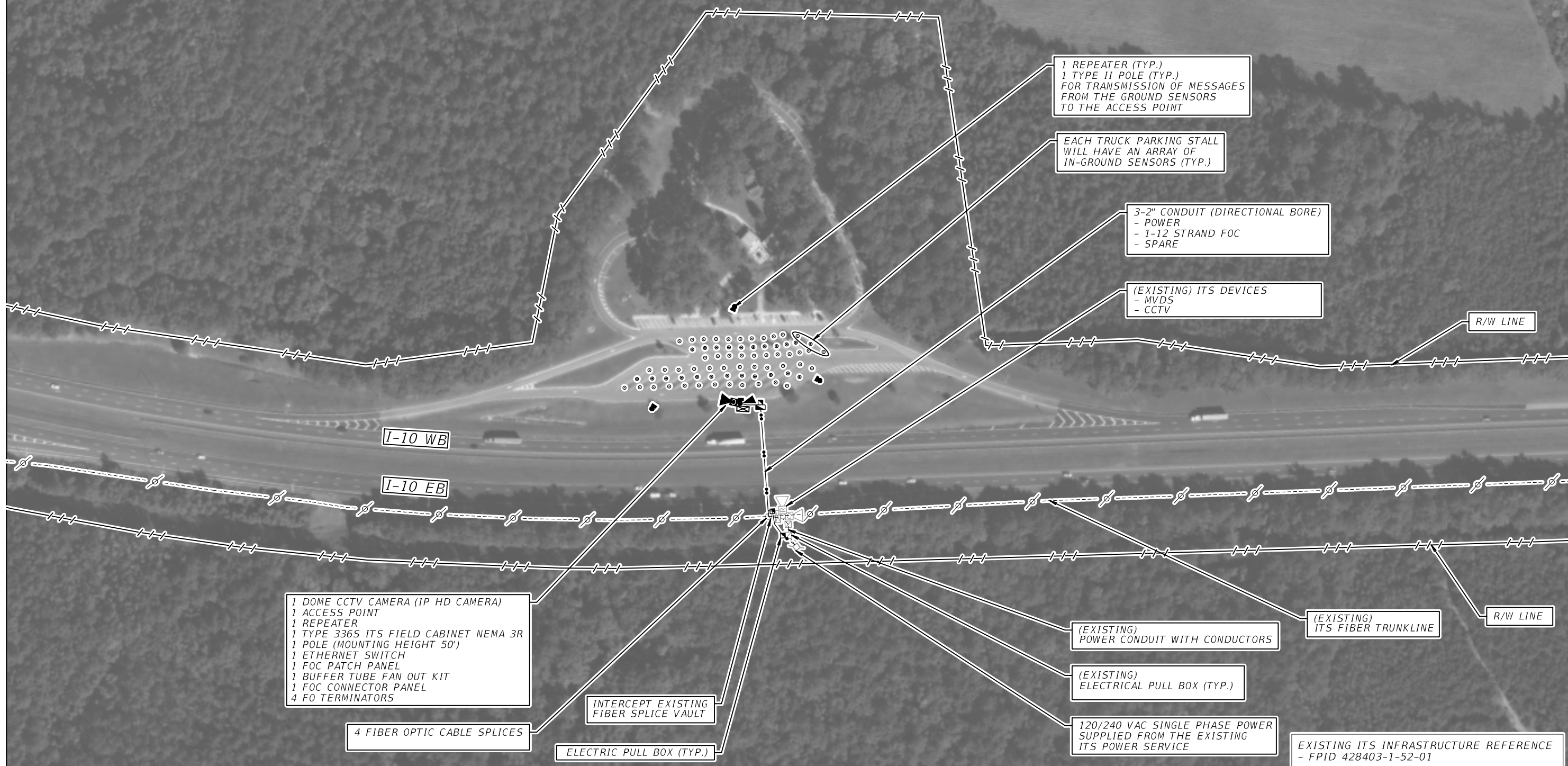
EXISTING ITS INFRASTRUCTURE REFERENCE  
- FPID 428403-1-52-01

TRUCK PARKING AVAILABILITY SIGN WITH 3-DIGIT EMBEDDED DMS AT WB MM 128.45 WEST OF REST AREA 30061 (MM 133) (ADJUST SIGN LOCATIONS PER MUTCD SIGN SPACING REQUIREMENTS)

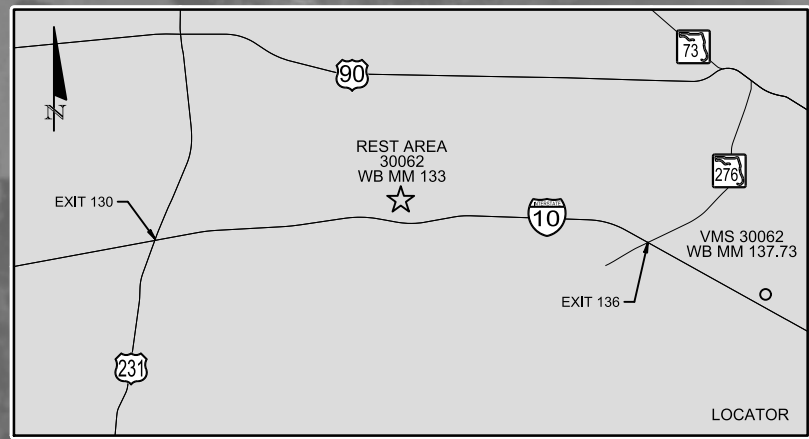
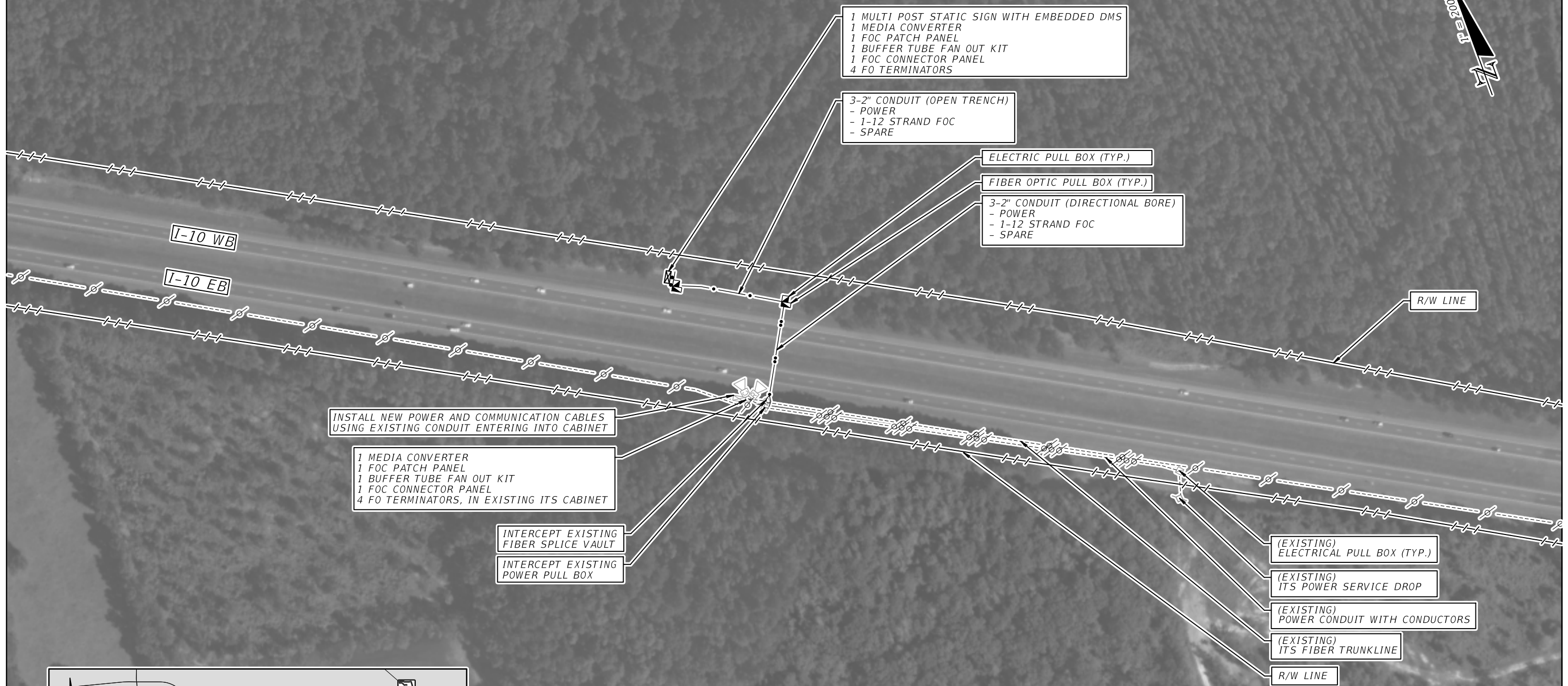
- 3-DIGIT EMBEDDED DMS
- POWER FROM NEAREST ITS CABINET
- POLE MOUNTED NEMA CABINET
- COMMUNICATION FROM NEAREST ITS CABINET

REVISIONS				STATE OF FLORIDA DEPARTMENT OF TRANSPORTATION			TRUCK PARKING AVAILABILITY SYSTEM JACKSON COUNTY, FDOT DISTRICT 3 TPAS SIGN 30061 EASTBOUND MILE MARKER 128.45	SHEET NO.  IT-08A
DATE	DESCRIPTION	DATE	DESCRIPTION	ROAD NO.	COUNTY	FINANCIAL PROJECT ID		
			<b>FOR ILLUSTRATION PURPOSE ONLY</b>	I-10	JACKSON	440096-1-52-01		





REVISIONS				STATE OF FLORIDA DEPARTMENT OF TRANSPORTATION			TRUCK PARKING AVAILABILITY SYSTEM JACKSON COUNTY, FDOT DISTRICT 3 REST AREA 30062 (23 SPACES) WESTBOUND MILE MARKER 133	SHEET NO.
DATE	DESCRIPTION	DATE	DESCRIPTION	ROAD NO.	COUNTY	FINANCIAL PROJECT ID		IT-09
			<b>FOR ILLUSTRATION PURPOSE ONLY</b>	I-10	JACKSON	440096-1-52-01		



**REST AREA TRUCK PARKING XXX SPACES AVAILABLE**

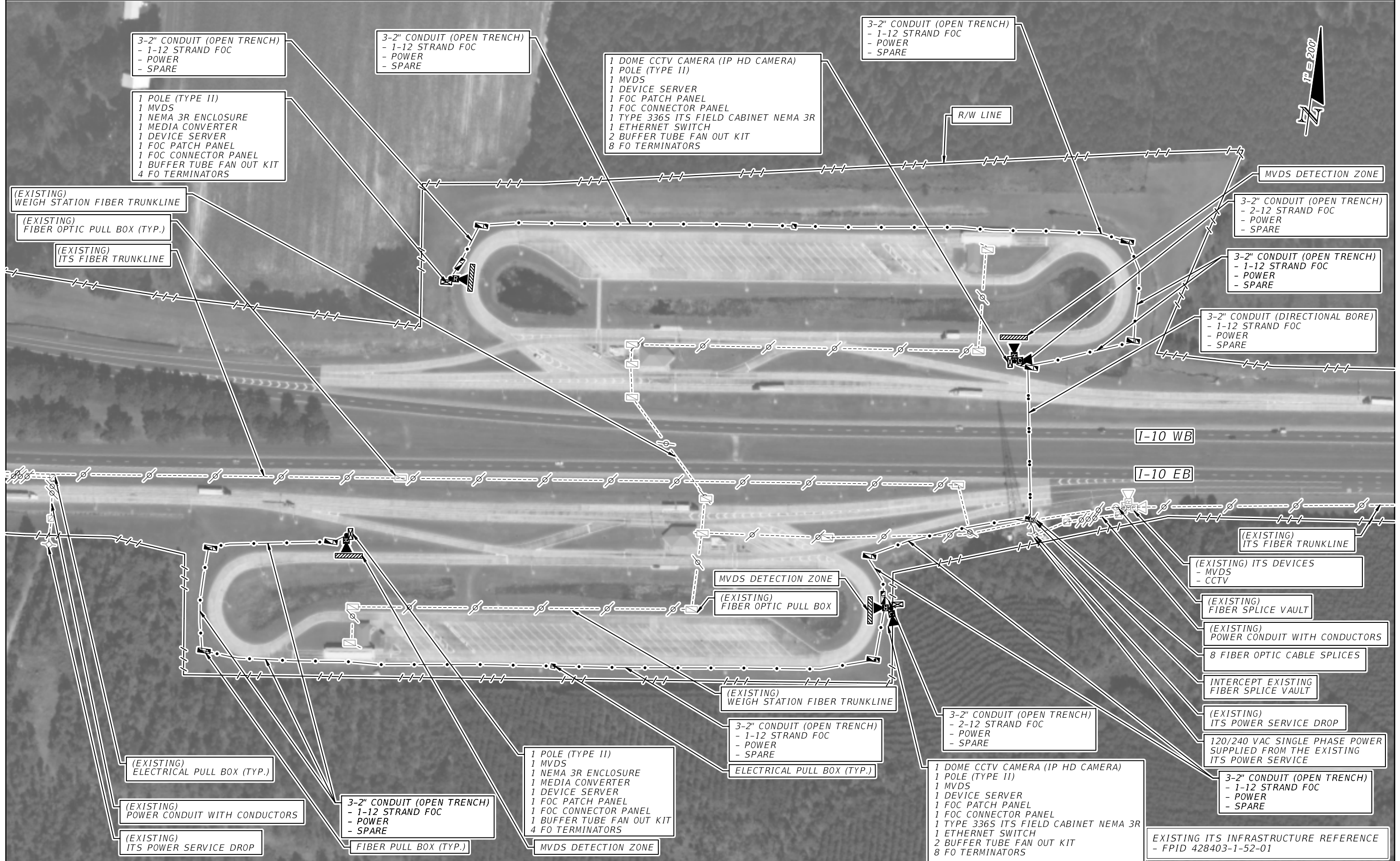
TRUCK PARKING AVAILABILITY SIGN WITH 3-DIGIT EMBEDDED DMS AT WB MM 137.73 EAST OF REST AREA 30062 (MM 133) (ADJUST SIGN LOCATIONS PER MUTCD SIGN SPACING REQUIREMENTS)

- 3-DIGIT EMBEDDED DMS
- POWER FROM NEAREST ITS CABINET
- POLE MOUNTED NEMA CABINET
- COMMUNICATION FROM NEAREST ITS CABINET

EXISTING ITS INFRASTRUCTURE REFERENCE - FPID 428403-1-52-01

REVISIONS				FOR ILLUSTRATION PURPOSE ONLY	STATE OF FLORIDA DEPARTMENT OF TRANSPORTATION			TRUCK PARKING AVAILABILITY SYSTEM JACKSON COUNTY, FDOT DISTRICT 3 TPAS SIGN 30062 WESTBOUND MILE MARKER 137.73	SHEET NO.  IT-09A
DATE	DESCRIPTION	DATE	DESCRIPTION		ROAD NO.	COUNTY	FINANCIAL PROJECT ID		
						I-10	JACKSON		





3-2" CONDUIT (OPEN TRENCH)  
- 1-12 STRAND FOC  
- POWER  
- SPARE

3-2" CONDUIT (OPEN TRENCH)  
- 1-12 STRAND FOC  
- POWER  
- SPARE

1 DOME CCTV CAMERA (IP HD CAMERA)  
1 POLE (TYPE II)  
1 MVDS  
1 DEVICE SERVER  
1 FOC PATCH PANEL  
1 FOC CONNECTOR PANEL  
1 TYPE 336S ITS FIELD CABINET NEMA 3R  
1 ETHERNET SWITCH  
2 BUFFER TUBE FAN OUT KIT  
8 FO TERMINATORS

3-2" CONDUIT (OPEN TRENCH)  
- 1-12 STRAND FOC  
- POWER  
- SPARE

1 POLE (TYPE II)  
1 MVDS  
1 NEMA 3R ENCLOSURE  
1 MEDIA CONVERTER  
1 DEVICE SERVER  
1 FOC PATCH PANEL  
1 FOC CONNECTOR PANEL  
1 BUFFER TUBE FAN OUT KIT  
4 FO TERMINATORS

(EXISTING)  
WEIGH STATION FIBER TRUNKLINE

(EXISTING)  
FIBER OPTIC PULL BOX (TYP.)

(EXISTING)  
ITS FIBER TRUNKLINE

MVDS DETECTION ZONE

3-2" CONDUIT (OPEN TRENCH)  
- 2-12 STRAND FOC  
- POWER  
- SPARE

3-2" CONDUIT (OPEN TRENCH)  
- 1-12 STRAND FOC  
- POWER  
- SPARE

3-2" CONDUIT (DIRECTIONAL BORE)  
- 1-12 STRAND FOC  
- POWER  
- SPARE

I-10 WB

I-10 EB

(EXISTING)  
ITS FIBER TRUNKLINE

(EXISTING) ITS DEVICES  
- MVDS  
- CCTV

(EXISTING)  
FIBER SPLICE VAULT

(EXISTING)  
POWER CONDUIT WITH CONDUCTORS  
8 FIBER OPTIC CABLE SPLICES

INTERCEPT EXISTING  
FIBER SPLICE VAULT

(EXISTING)  
ITS POWER SERVICE DROP

120/240 VAC SINGLE PHASE POWER  
SUPPLIED FROM THE EXISTING  
ITS POWER SERVICE

3-2" CONDUIT (OPEN TRENCH)  
- 1-12 STRAND FOC  
- POWER  
- SPARE

MVDS DETECTION ZONE

(EXISTING)  
FIBER OPTIC PULL BOX

(EXISTING)  
WEIGH STATION FIBER TRUNKLINE

3-2" CONDUIT (OPEN TRENCH)  
- 1-12 STRAND FOC  
- POWER  
- SPARE

ELECTRICAL PULL BOX (TYP.)

3-2" CONDUIT (OPEN TRENCH)  
- 2-12 STRAND FOC  
- POWER  
- SPARE

1 DOME CCTV CAMERA (IP HD CAMERA)  
1 POLE (TYPE II)  
1 MVDS  
1 DEVICE SERVER  
1 FOC PATCH PANEL  
1 FOC CONNECTOR PANEL  
1 TYPE 336S ITS FIELD CABINET NEMA 3R  
1 ETHERNET SWITCH  
2 BUFFER TUBE FAN OUT KIT  
8 FO TERMINATORS

(EXISTING)  
ELECTRICAL PULL BOX (TYP.)

(EXISTING)  
POWER CONDUIT WITH CONDUCTORS

(EXISTING)  
ITS POWER SERVICE DROP

3-2" CONDUIT (OPEN TRENCH)  
- 1-12 STRAND FOC  
- POWER  
- SPARE

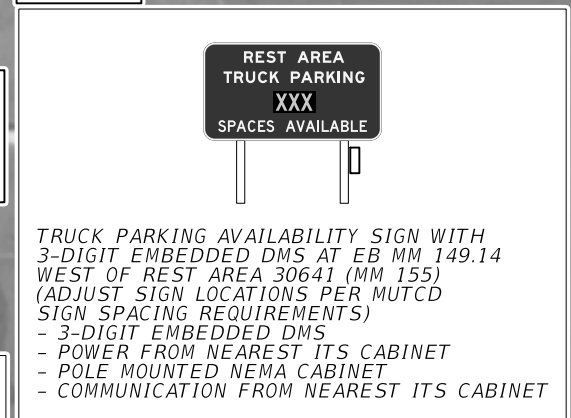
FIBER PULL BOX (TYP.)

1 POLE (TYPE II)  
1 MVDS  
1 NEMA 3R ENCLOSURE  
1 MEDIA CONVERTER  
1 DEVICE SERVER  
1 FOC PATCH PANEL  
1 FOC CONNECTOR PANEL  
1 BUFFER TUBE FAN OUT KIT  
4 FO TERMINATORS

MVDS DETECTION ZONE

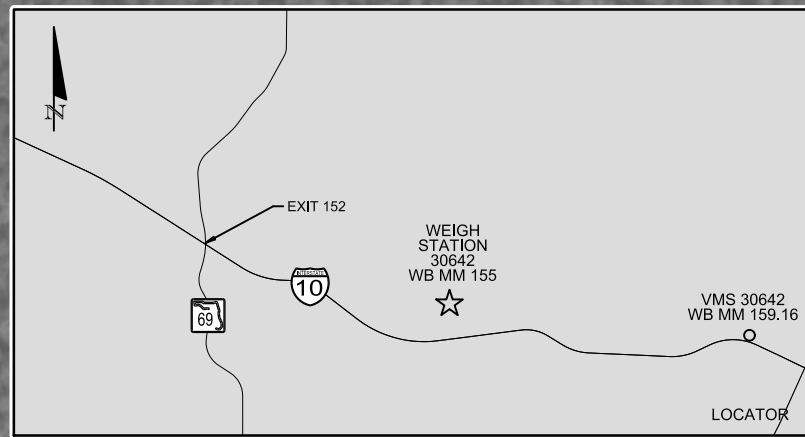
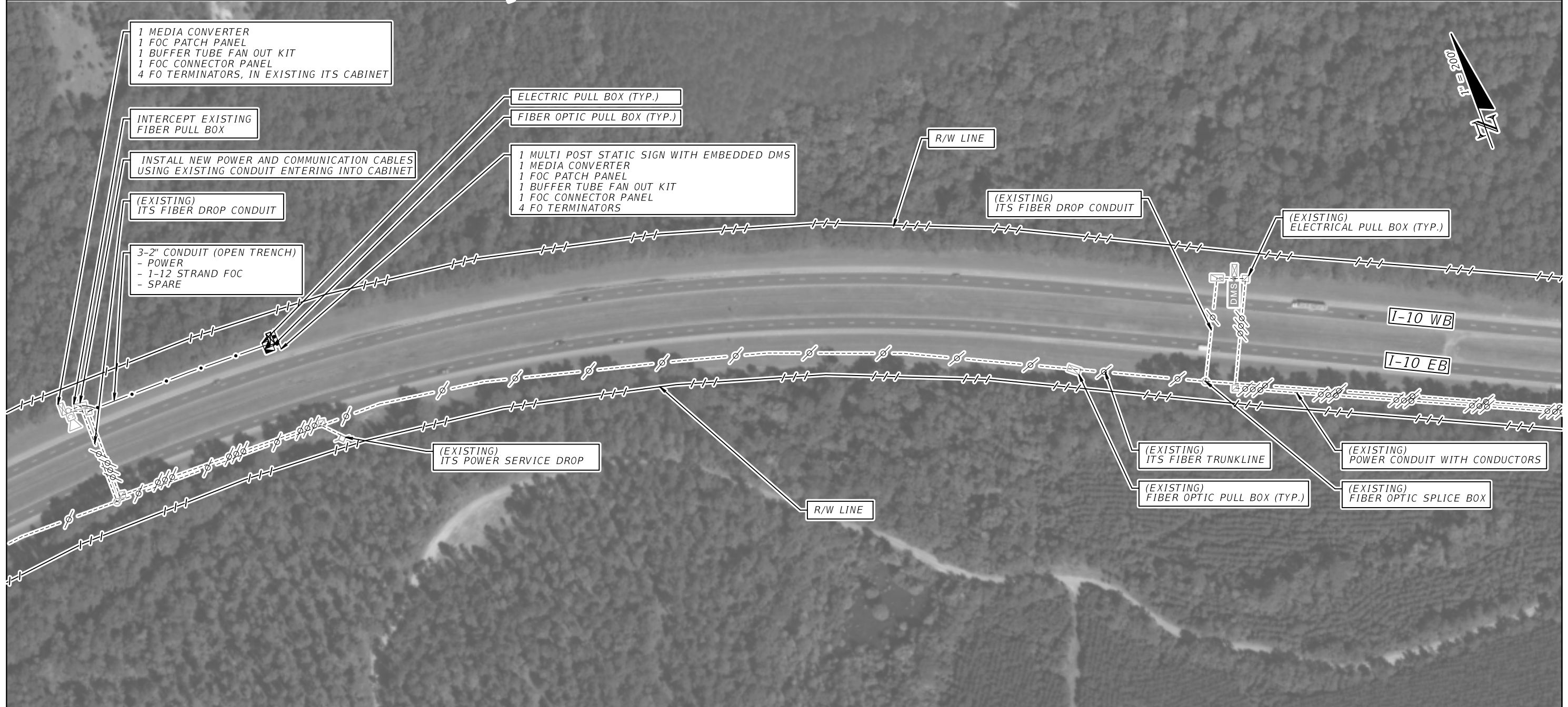
EXISTING ITS INFRASTRUCTURE REFERENCE  
- FPID 428403-1-52-01

REVISIONS		DESCRIPTION		STATE OF FLORIDA DEPARTMENT OF TRANSPORTATION			TRUCK PARKING AVAILABILITY SYSTEM JACKSON COUNTY, FDOT DISTRICT 3 WEIGH STATION 30641 (37 SPACES) EASTBOUND MILE MARKER 155 WEIGH STATION 30642 (36 SPACES) WESTBOUND MILE MARKER 155	SHEET NO.  IT-10
DATE	DESCRIPTION	DATE	DESCRIPTION	ROAD NO.	COUNTY	FINANCIAL PROJECT ID		
			FOR ILLUSTRATION PURPOSE ONLY	I-10	JACKSON	440096-1-52-01		



REVISIONS		DESCRIPTION	STATE OF FLORIDA DEPARTMENT OF TRANSPORTATION			TRUCK PARKING AVAILABILITY SYSTEM JACKSON COUNTY, FDOT DISTRICT 3 TPAS SIGN 30641 EASTBOUND MILE MARKER 149.14	SHEET NO.  IT-10A
DATE	DESCRIPTION		ROAD NO.	COUNTY	FINANCIAL PROJECT ID		
			I-10	JACKSON	440096-1-52-01		
FOR ILLUSTRATION PURPOSE ONLY							





**REST AREA  
TRUCK PARKING  
XXX  
SPACES AVAILABLE**

**TRUCK PARKING AVAILABILITY SIGN WITH 3-DIGIT EMBEDDED DMS AT WB MM 159.16 EAST OF REST AREA 30642 (MM 155) (ADJUST SIGN LOCATIONS PER MUTCD SIGN SPACING REQUIREMENTS)**  
 - 3-DIGIT EMBEDDED DMS  
 - POWER FROM NEAREST ITS CABINET  
 - POLE MOUNTED NEMA CABINET  
 - COMMUNICATION FROM NEAREST ITS CABINET

EXISTING ITS INFRASTRUCTURE REFERENCE - FPID 428403-1-52-01

REVISIONS		FOR ILLUSTRATION PURPOSE ONLY	STATE OF FLORIDA DEPARTMENT OF TRANSPORTATION			TRUCK PARKING AVAILABILITY SYSTEM JACKSON COUNTY, FDOT DISTRICT 3 TPAS SIGN 30642 WESTBOUND MILE MARKER 159.16	SHEET NO.  IT-10B
DATE	DESCRIPTION		DATE	DESCRIPTION	FINANCIAL PROJECT ID		
					ROAD NO. COUNTY		
				I-10 JACKSON	440096-1-52-01		

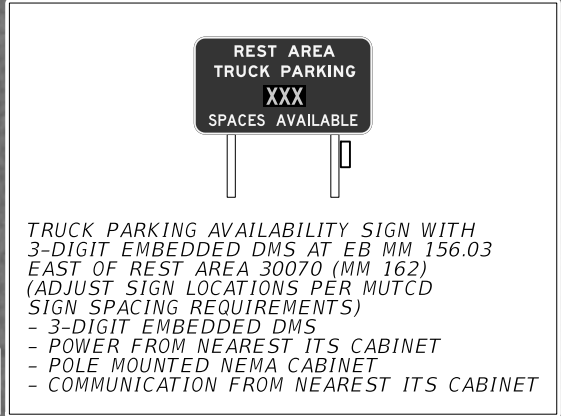
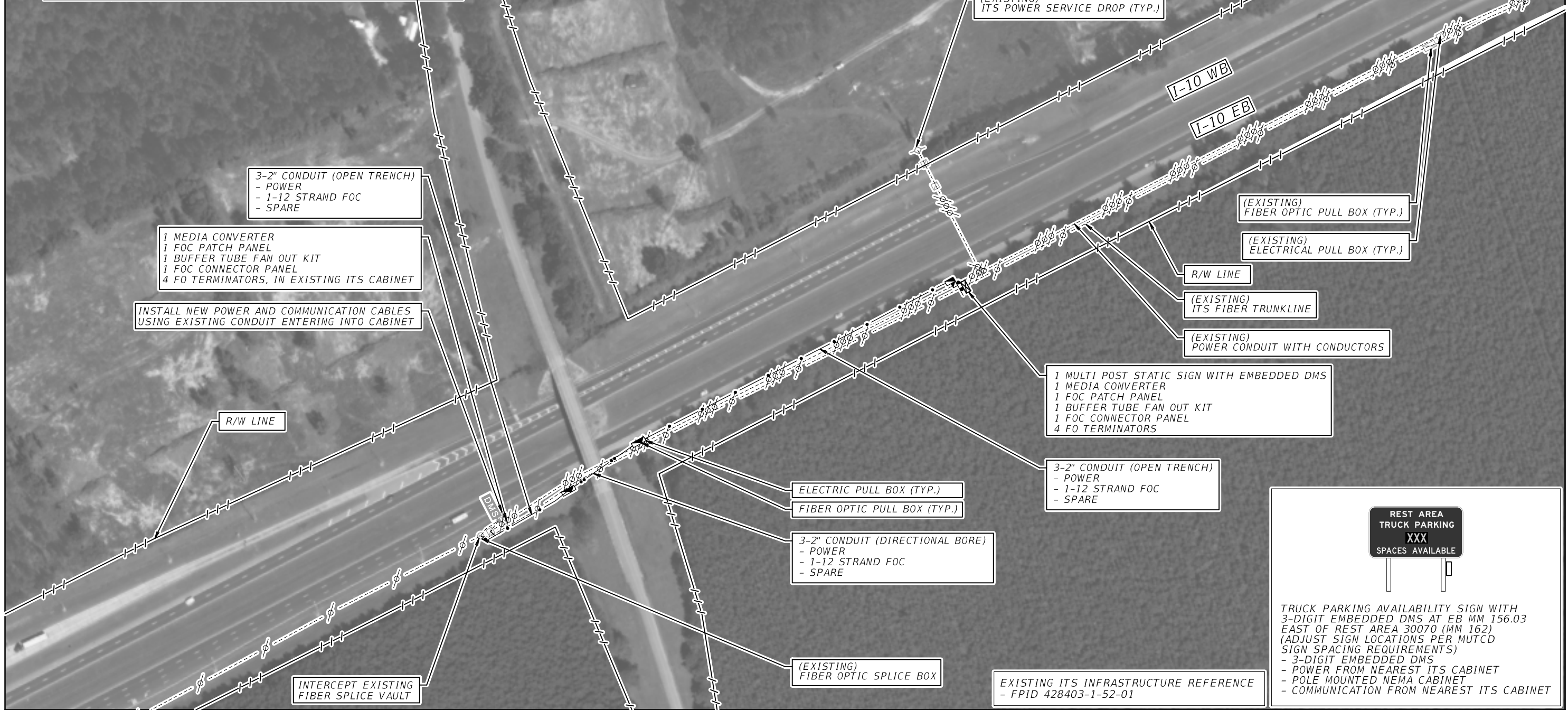
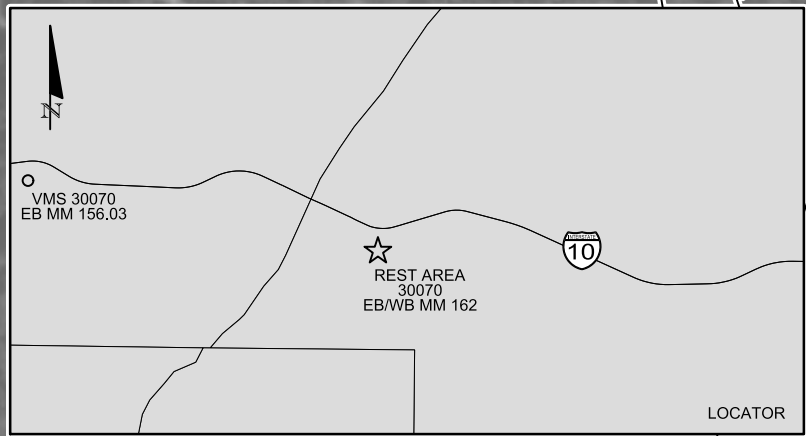




EXISTING ITS INFRASTRUCTURE REFERENCE  
- FPID 428403-1-52-01

REVISIONS				STATE OF FLORIDA DEPARTMENT OF TRANSPORTATION			TRUCK PARKING AVAILABILITY SYSTEM GADSDEN COUNTY, FDOT DISTRICT 3 REST AREA 30070 (42 SPACES) EAST/WEST MILE MARKER 162	SHEET NO.  IT-11
DATE	DESCRIPTION	DATE	DESCRIPTION	ROAD NO.	COUNTY	FINANCIAL PROJECT ID		
				I-10	GADSDEN	440096-1-52-01		

**FOR ILLUSTRATION  
PURPOSE ONLY**



REVISIONS			
DATE	DESCRIPTION	DATE	DESCRIPTION
<b>FOR ILLUSTRATION PURPOSE ONLY</b>			

<b>STATE OF FLORIDA DEPARTMENT OF TRANSPORTATION</b>		
ROAD NO.	COUNTY	FINANCIAL PROJECT ID
I-10	JACKSON	440096-1-52-01

TRUCK PARKING AVAILABILITY SYSTEM  
JACKSON COUNTY, FDOT DISTRICT 3  
TPAS SIGN 30070  
EASTBOUND MILE MARKER 156.03

SHEET NO.  
  
IT-11A





- 1 MULTI POST STATIC SIGN WITH EMBEDDED DMS
- 1 MEDIA CONVERTER
- 1 FOC PATCH PANEL
- 1 BUFFER TUBE FAN OUT KIT
- 1 FOC CONNECTOR PANEL
- 4 FO TERMINATORS

FIBER OPTIC PULL BOX (TYP.)

- 3-2" CONDUIT (OPEN TRENCH)
- POWER
- 1-12 STRAND FOC
- SPARE

ELECTRIC PULL BOX (TYP.)

- 1 MEDIA CONVERTER
- 1 FOC PATCH PANEL
- 1 BUFFER TUBE FAN OUT KIT
- 1 FOC CONNECTOR PANEL
- 4 FO TERMINATORS, IN EXISTING ITS CABINET

INSTALL NEW POWER AND COMMUNICATION CABLES USING EXISTING CONDUIT ENTERING INTO CABINET

INTERCEPT EXISTING POWER PULL BOX

INTERCEPT EXISTING FIBER PULL BOX

(EXISTING) FIBER OPTIC PULL BOX (TYP.)

(EXISTING) ITS FIBER TRUNKLINE

(EXISTING) ITS FIBER DROP CONDUIT

(EXISTING) POWER CONDUIT WITH CONDUCTORS

(EXISTING) ELECTRICAL PULL BOX (TYP.)

(EXISTING) FIBER OPTIC SPLICE BOX (TYP.)

EXISTING ITS INFRASTRUCTURE REFERENCE - FPID 428403-1-52-01

REST AREA  
TRUCK PARKING  
XXX  
SPACES AVAILABLE

TRUCK PARKING AVAILABILITY SIGN WITH 3-DIGIT EMBEDDED DMS AT EB MM 166.90 EAST OF REST AREA 30070 (MM 162) (ADJUST SIGN LOCATIONS PER MUTCD SIGN SPACING REQUIREMENTS)

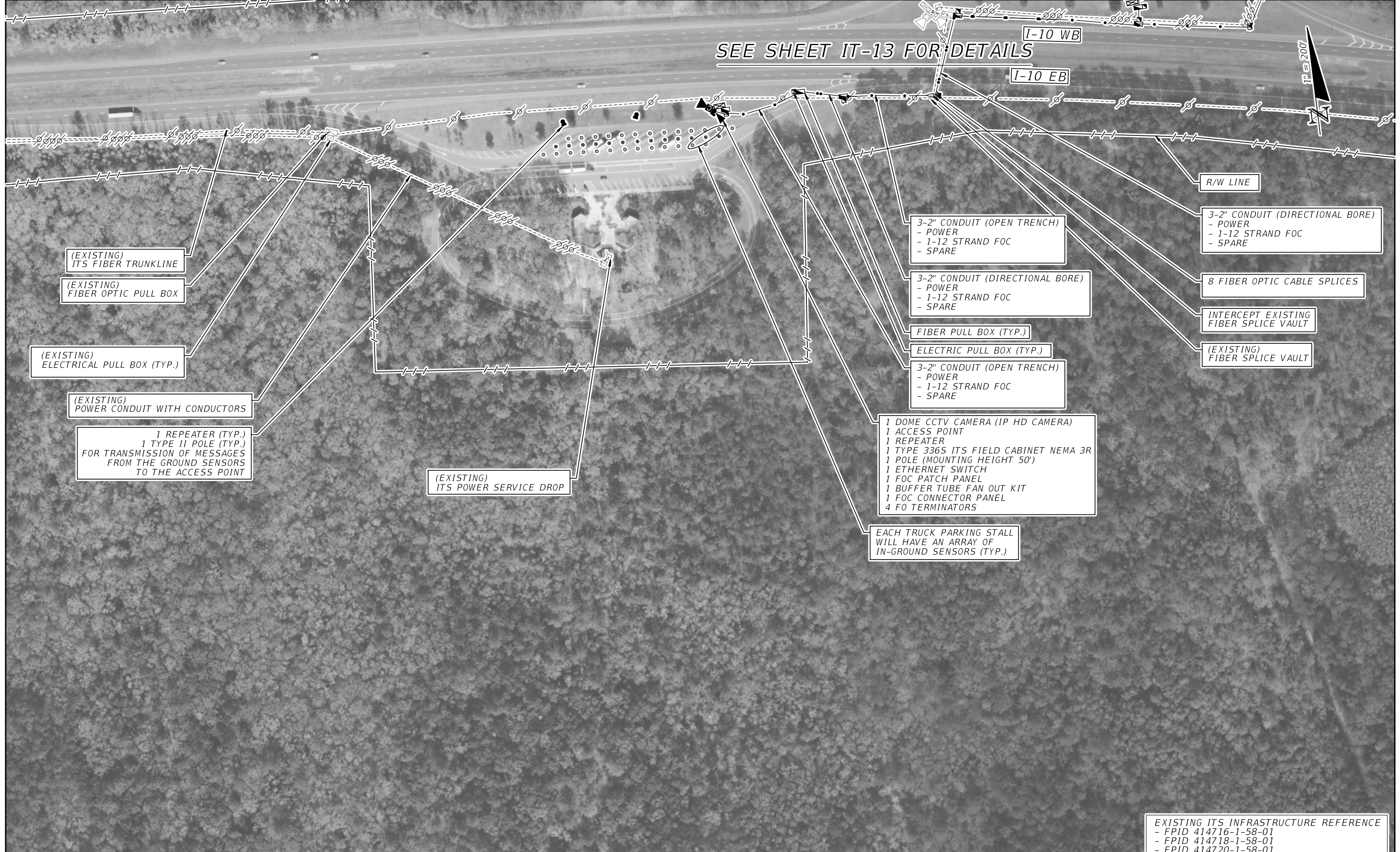
- 3-DIGIT EMBEDDED DMS
- POWER FROM NEAREST ITS CABINET
- POLE MOUNTED NEMA CABINET
- COMMUNICATION FROM NEAREST ITS CABINET

REVISIONS				STATE OF FLORIDA DEPARTMENT OF TRANSPORTATION			TRUCK PARKING AVAILABILITY SYSTEM GADSDEN COUNTY, FDOT DISTRICT 3 TPAS SIGN 30070 WESTBOUND MILE MARKER 166.90	SHEET NO.  IT-11B
DATE	DESCRIPTION	DATE	DESCRIPTION	ROAD NO.	COUNTY	FINANCIAL PROJECT ID		
				1-10	GADSDEN	440096-1-52-01		

FOR ILLUSTRATION  
PURPOSE ONLY



SEE SHEET IT-13 FOR DETAILS



(EXISTING)  
ITS FIBER TRUNKLINE

(EXISTING)  
FIBER OPTIC PULL BOX

(EXISTING)  
ELECTRICAL PULL BOX (TYP.)

(EXISTING)  
POWER CONDUIT WITH CONDUCTORS

1 REPEATER (TYP.)  
1 TYPE II POLE (TYP.)  
FOR TRANSMISSION OF MESSAGES  
FROM THE GROUND SENSORS  
TO THE ACCESS POINT

(EXISTING)  
ITS POWER SERVICE DROP

3-2" CONDUIT (OPEN TRENCH)  
- POWER  
- 1-12 STRAND FOC  
- SPARE

3-2" CONDUIT (DIRECTIONAL BORE)  
- POWER  
- 1-12 STRAND FOC  
- SPARE

FIBER PULL BOX (TYP.)

ELECTRIC PULL BOX (TYP.)

3-2" CONDUIT (OPEN TRENCH)  
- POWER  
- 1-12 STRAND FOC  
- SPARE

1 DOME CCTV CAMERA (IP HD CAMERA)  
1 ACCESS POINT  
1 REPEATER  
1 TYPE 336S ITS FIELD CABINET NEMA 3R  
1 POLE (MOUNTING HEIGHT 50')  
1 ETHERNET SWITCH  
1 FOC PATCH PANEL  
1 BUFFER TUBE FAN OUT KIT  
1 FOC CONNECTOR PANEL  
4 FO TERMINATORS

EACH TRUCK PARKING STALL  
WILL HAVE AN ARRAY OF  
IN-GROUND SENSORS (TYP.)

R/W LINE

3-2" CONDUIT (DIRECTIONAL BORE)  
- POWER  
- 1-12 STRAND FOC  
- SPARE

8 FIBER OPTIC CABLE SPLICES

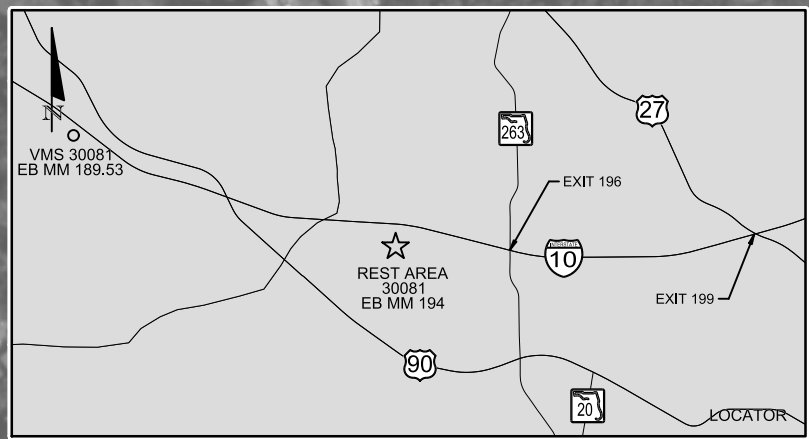
INTERCEPT EXISTING  
FIBER SPLICE VAULT

(EXISTING)  
FIBER SPLICE VAULT

EXISTING ITS INFRASTRUCTURE REFERENCE  
- FPID 414716-1-58-01  
- FPID 414718-1-58-01  
- FPID 414720-1-58-01

REVISIONS				STATE OF FLORIDA DEPARTMENT OF TRANSPORTATION			TRUCK PARKING AVAILABILITY SYSTEM LEON COUNTY, FDOT DISTRICT 3 REST AREA 30081 (14 SPACES) EASTBOUND MILE MARKER 194	SHEET NO.  IT-12
DATE	DESCRIPTION	DATE	DESCRIPTION	ROAD NO.	COUNTY	FINANCIAL PROJECT ID		
			FOR ILLUSTRATION PURPOSE ONLY	I-10	LEON	440096-1-52-01		





EXISTING ITS INFRASTRUCTURE REFERENCE  
 - FPID 414716-1-58-01  
 - FPID 414718-1-58-01  
 - FPID 414720-1-58-01

REST AREA  
 TRUCK PARKING  
 XXX  
 SPACES AVAILABLE

TRUCK PARKING AVAILABILITY SIGN WITH  
 3-DIGIT EMBEDDED DMS AT EB MM 189.53  
 WEST OF REST AREA 30081 (MM 194)  
 (ADJUST SIGN LOCATIONS PER MUTCD  
 SIGN SPACING REQUIREMENTS)  
 - 3-DIGIT EMBEDDED DMS  
 - POWER FROM NEAREST ITS CABINET  
 - POLE MOUNTED NEMA CABINET  
 - COMMUNICATION FROM NEAREST ITS CABINET

REVISIONS		DESCRIPTION	STATE OF FLORIDA DEPARTMENT OF TRANSPORTATION			TRUCK PARKING AVAILABILITY SYSTEM GADSDEN COUNTY, FDOT DISTRICT 3 TPAS SIGN 30081 EASTBOUND MILE MARKER 189.53	SHEET NO.  IT-12A
DATE	DESCRIPTION		ROAD NO.	COUNTY	FINANCIAL PROJECT ID		
		FOR ILLUSTRATION PURPOSE ONLY	I-10	GADSDEN	440096-1-52-01		





3-2" CONDUIT (OPEN TRENCH)  
- POWER  
- 1-12 STRAND FOC  
- SPARE

1 REPEATER (TYP.)  
1 TYPE II POLE (TYP.)  
FOR TRANSMISSION OF MESSAGES  
FROM THE GROUND SENSORS  
TO THE ACCESS POINT

FIBER PULL BOX (TYP.)

(EXISTING) ITS DEVICES  
- MVDS  
- CCTV

(EXISTING)  
ITS FIBER DROP CONDUIT

3-2" CONDUIT (DIRECTIONAL BORE)  
- POWER  
- 1-12 STRAND FOC  
- SPARE

R/W LINE

(EXISTING)  
ITS FIBER TRUNKLINE

EACH TRUCK PARKING STALL  
WILL HAVE AN ARRAY OF  
IN-GROUND SENSORS (TYP.)

1 DOME CCTV CAMERA (IP HD CAMERA)  
1 ACCESS POINT  
1 REPEATER  
1 TYPE 336S ITS FIELD CABINET NEMA 3R  
1 POLE (MOUNTING HEIGHT 50')  
1 ETHERNET SWITCH  
1 FOC PATCH PANEL  
1 BUFFER TUBE FAN OUT KIT  
1 FOC CONNECTOR PANEL  
4 FO TERMINATORS

2-2" CONDUIT (OPEN TRENCH)  
- POWER  
- SPARE

(EXISTING)  
ITS POWER SERVICE DROP

120/240 VAC SINGLE PHASE POWER  
SUPPLIED FROM THE EXISTING  
ITS POWER SERVICE

2-2" CONDUIT (DIRECTIONAL BORE)  
- POWER  
- SPARE

2-2" CONDUIT (OPEN TRENCH)  
- POWER  
- SPARE

ELECTRIC PULL BOX (TYP.)

SEE SHEET IT-12 FOR DETAILS

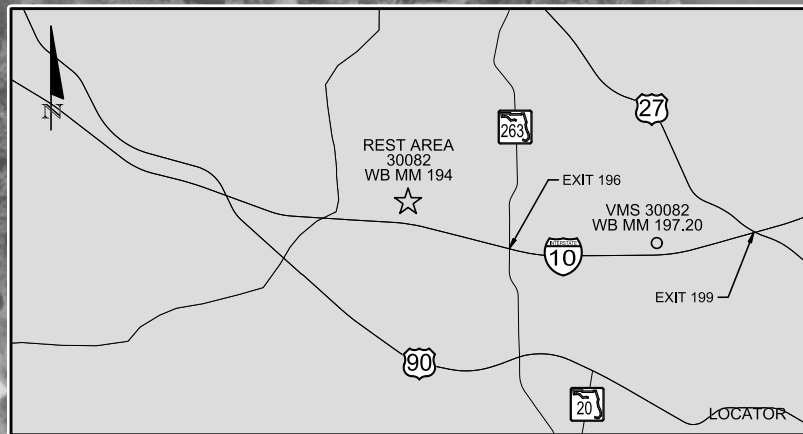
I-10 WB

I-10 EB

EXISTING ITS INFRASTRUCTURE REFERENCE  
- FPID 414716-1-58-01  
- FPID 414718-1-58-01  
- FPID 414720-1-58-01

DATE		DESCRIPTION		REVISIONS		DATE		DESCRIPTION	
FOR ILLUSTRATION PURPOSE ONLY									
STATE OF FLORIDA DEPARTMENT OF TRANSPORTATION									
ROAD NO.		COUNTY		FINANCIAL PROJECT ID					
I-10		LEON		440096-1-52-01					
TRUCK PARKING AVAILABILITY SYSTEM LEON COUNTY, FDOT DISTRICT 3 REST AREA 30082 (14 SPACES) WESTBOUND MILE MARKER 194								SHEET NO. IT-13	





1 MULTI POST STATIC SIGN WITH EMBEDDED DMS  
 1 MEDIA CONVERTER  
 1 FOC PATCH PANEL  
 1 BUFFER TUBE FAN OUT KIT  
 1 FOC CONNECTOR PANEL  
 4 FO TERMINATORS

3-2" CONDUIT (DIRECTIONAL BORE)  
 - POWER  
 - 1-12 STRAND FOC  
 - SPARE

I-10 WB  
 I-10 EB

(EXISTING)  
 ITS FIBER TRUNKLINE

1 MEDIA CONVERTER  
 1 FOC PATCH PANEL  
 1 BUFFER TUBE FAN OUT KIT  
 1 FOC CONNECTOR PANEL  
 4 FO TERMINATORS, IN EXISTING ITS CABINET

INSTALL NEW POWER AND COMMUNICATION CABLES  
 USING EXISTING CONDUIT ENTERING INTO CABINET

INTERCEPT EXISTING  
 POWER PULL BOX

3-2" CONDUIT (OPEN TRENCH)  
 - POWER  
 - 1-12 STRAND FOC

(EXISTING)  
 ITS POWER SERVICE DROP (TYP.)

FIBER OPTIC PULL BOX (TYP.)

ELECTRIC PULL BOX (TYP.)

R/W LINE

(EXISTING)  
 POWER CONDUIT WITH CONDUCTORS

(EXISTING)  
 FIBER OPTIC PULL BOX (TYP.)

(EXISTING)  
 ITS FIBER DROP CONDUIT

(EXISTING)  
 ELECTRICAL PULL BOX (TYP.)

(EXISTING)  
 FIBER OPTIC SPLICE BOX (TYP.)

REST AREA  
 TRUCK PARKING  
 XXX  
 SPACES AVAILABLE

TRUCK PARKING AVAILABILITY SIGN WITH  
 3-DIGIT EMBEDDED DMS AT WB MM 197.20  
 EAST OF REST AREA 30082 (MM 194)  
 (ADJUST SIGN LOCATIONS PER MUTCD  
 SIGN SPACING REQUIREMENTS)  
 - 3-DIGIT EMBEDDED DMS  
 - POWER FROM NEAREST ITS CABINET  
 - POLE MOUNTED NEMA CABINET  
 - COMMUNICATION FROM NEAREST ITS CABINET

EXISTING ITS INFRASTRUCTURE REFERENCE  
 - FPID 414716-1-58-01  
 - FPID 414718-1-58-01  
 - FPID 414720-1-58-01

REVISIONS		DESCRIPTION	
DATE	DESCRIPTION	DATE	DESCRIPTION
<b>FOR ILLUSTRATION PURPOSE ONLY</b>			

STATE OF FLORIDA DEPARTMENT OF TRANSPORTATION		
ROAD NO.	COUNTY	FINANCIAL PROJECT ID
I-10	LEON	440096-1-52-01

TRUCK PARKING AVAILABILITY SYSTEM  
 LEON COUNTY, FDOT DISTRICT 3  
 TPAS SIGN 30082  
 WESTBOUND MILE MARKER 197.20

SHEET  
 NO.  
 IT-13A

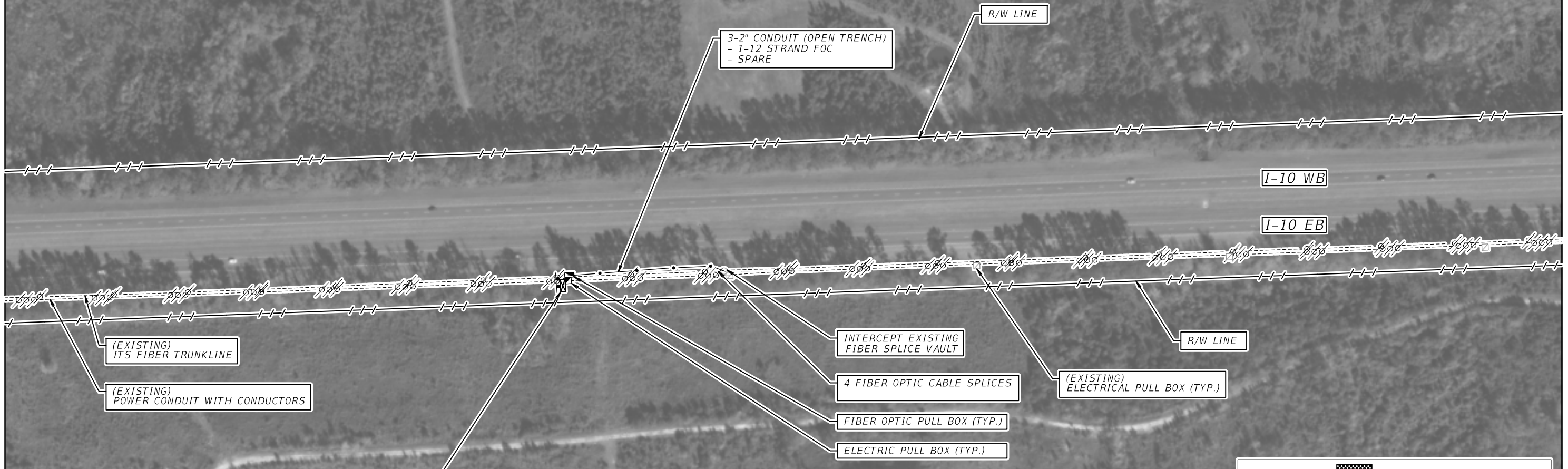




EXISTING ITS INFRASTRUCTURE REFERENCE  
 - FPID 213272-8-52-01

REVISIONS		DESCRIPTION		STATE OF FLORIDA DEPARTMENT OF TRANSPORTATION			TRUCK PARKING AVAILABILITY SYSTEM JEFFERSON COUNTY, FDOT DISTRICT 3 REST AREA 30091 (10 SPACES) EASTBOUND MILE MARKER 233	SHEET NO. IT-14
DATE	DESCRIPTION	DATE	DESCRIPTION	ROAD NO.	COUNTY	FINANCIAL PROJECT ID		
			FOR ILLUSTRATION PURPOSE ONLY	I-10	JEFFERSON	440096-1-52-01		





- 1 MULTI POST STATIC SIGN WITH EMBEDDED DMS
- 1 MEDIA CONVERTER
- 1 FOC PATCH PANEL
- 1 BUFFER TUBE FAN OUT KIT
- 1 FOC CONNECTOR PANEL
- 4 FO TERMINATORS



TRUCK PARKING AVAILABILITY SIGN WITH 3-DIGIT EMBEDDED DMS AT EB MM 230.98 WEST OF REST AREA 30091 (MM 233) (ADJUST SIGN LOCATIONS PER MUTCD SIGN SPACING REQUIREMENTS)

- 3-DIGIT EMBEDDED DMS
- POWER FROM SOLAR PANEL
- POLE MOUNTED NEMA CABINET
- COMMUNICATION FROM NEAREST ITS SPLICE VAULT

EXISTING ITS INFRASTRUCTURE REFERENCE  
- FPID 213272-8-52-01

REVISIONS				STATE OF FLORIDA DEPARTMENT OF TRANSPORTATION	TRUCK PARKING AVAILABILITY SYSTEM JEFFERSON COUNTY, FDOT DISTRICT 3 TPAS SIGN 30091 EASTBOUND MILE MARKER 230.98	SHEET NO.  IT-14A
DATE	DESCRIPTION	DATE	DESCRIPTION			
			FOR ILLUSTRATION PURPOSE ONLY			

EXISTING ITS INFRASTRUCTURE REFERENCE  
- FPID XXXXXX-X-XX-XX



1 DOME CCTV CAMERA (IP HD CAMERA)  
1 ACCESS POINT  
1 REPEATER  
1 TYPE 336S ITS FIELD CABINET NEMA 3R  
1 POLE (MOUNTING HEIGHT 50')  
1 ETHERNET SWITCH  
1 FOC PATCH PANEL  
1 BUFFER TUBE FAN OUT KIT  
1 FOC CONNECTOR PANEL  
4 FO TERMINATORS

3-2" CONDUIT (OPEN TRENCH)  
- POWER  
- 1-12 STRAND FOC  
- SPARE

3-2" CONDUIT (OPEN TRENCH)  
- POWER  
- 1-12 STRAND FOC  
- SPARE

ELECTRIC PULL BOX (TYP.)

FIBER PULL BOX (TYP.)

3-2" CONDUIT (DIRECTIONAL BORE)  
- POWER  
- 1-12 STRAND FOC  
- SPARE

1 REPEATER (TYP.)  
1 TYPE II POLE (TYP.)  
FOR TRANSMISSION OF MESSAGES  
FROM THE GROUND SENSORS  
TO THE ACCESS POINT

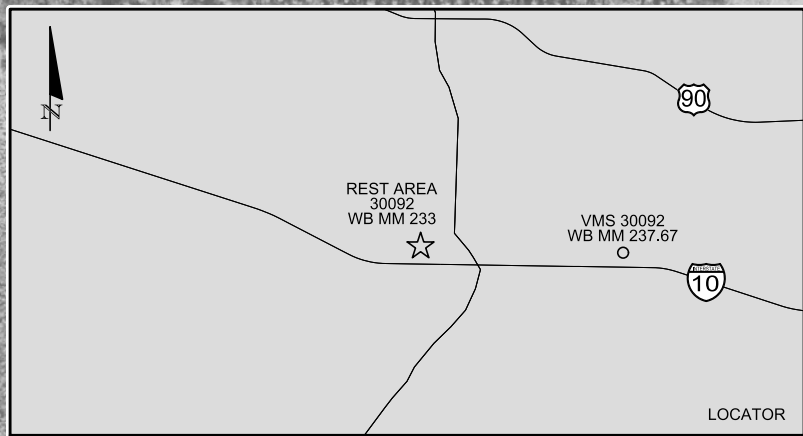
EACH TRUCK PARKING STALL  
WILL HAVE AN ARRAY OF  
IN-GROUND SENSORS (TYP.)

SEE SHEET IT-14 FOR DETAILS

EXISTING ITS INFRASTRUCTURE REFERENCE  
- FPID 213272-8-52-01

DATE		DESCRIPTION		REVISIONS		DATE		DESCRIPTION	
FOR ILLUSTRATION PURPOSE ONLY									
					STATE OF FLORIDA DEPARTMENT OF TRANSPORTATION				
ROAD NO.		COUNTY		FINANCIAL PROJECT ID					
I-10		JEFFERSON		440096-1-52-01					
								TRUCK PARKING AVAILABILITY SYSTEM JEFFERSON COUNTY, FDOT DISTRICT 3 REST AREA 30092 (11 SPACES) WESTBOUND MILE MARKER 233	
								SHEET NO. IT-15	





1 MULTI POST STATIC SIGN WITH EMBEDDED DMS  
 1 MEDIA CONVERTER  
 1 FOC PATCH PANEL  
 1 BUFFER TUBE FAN OUT KIT  
 1 FOC CONNECTOR PANEL  
 4 FO TERMINATORS

2-2" CONDUIT (DIRECTIONAL BORE)  
 - 1-12 STRAND FOC  
 - SPARE

4 FIBER OPTIC CABLE SPLICES

INTERCEPT EXISTING FIBER SPLICE VAULT

(EXISTING) ELECTRICAL PULL BOX (TYP.)

R/W LINE

R/W LINE

(EXISTING) ITS FIBER TRUNKLINE

(EXISTING) POWER CONDUIT WITH CONDUCTORS

(EXISTING) FIBER OPTIC SPLICE BOX (TYP.)



TRUCK PARKING AVAILABILITY SIGN WITH 3-DIGIT EMBEDDED DMS AT WB MM 237.67 WEST OF REST AREA 30092 (MM 233) (ADJUST SIGN LOCATIONS PER MUTCD SIGN SPACING REQUIREMENTS)  
 - 3-DIGIT EMBEDDED DMS  
 - POWER FROM SOLAR PANEL  
 - POLE MOUNTED NEMA CABINET  
 - COMMUNICATION FROM NEAREST ITS SPLICE VAULT

EXISTING ITS INFRASTRUCTURE REFERENCE - FPID 213272-8-52-01

REVISIONS		DESCRIPTION		STATE OF FLORIDA DEPARTMENT OF TRANSPORTATION			TRUCK PARKING AVAILABILITY SYSTEM MADISON COUNTY, FDOT DISTRICT 2 TPAS SIGN 30092 WESTBOUND MILE MARKER 237.67	SHEET NO. IT-15A
DATE	DESCRIPTION	DATE	DESCRIPTION	ROAD NO.	COUNTY	FINANCIAL PROJECT ID		
			FOR ILLUSTRATION PURPOSE ONLY	I-10	MADISON	440096-1-52-01		