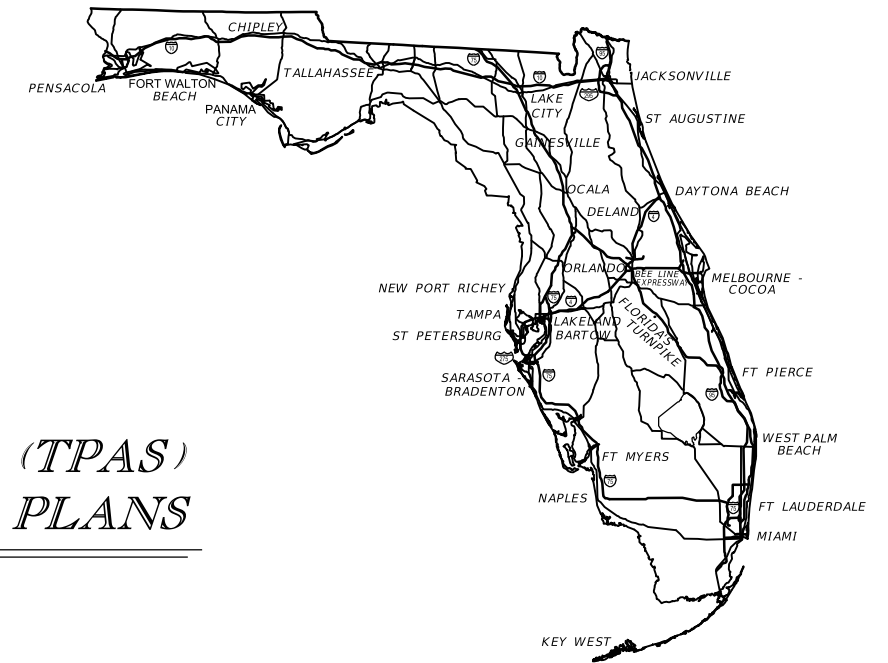


STATE OF FLORIDA
DEPARTMENT OF TRANSPORTATION

CONTRACT PLANS

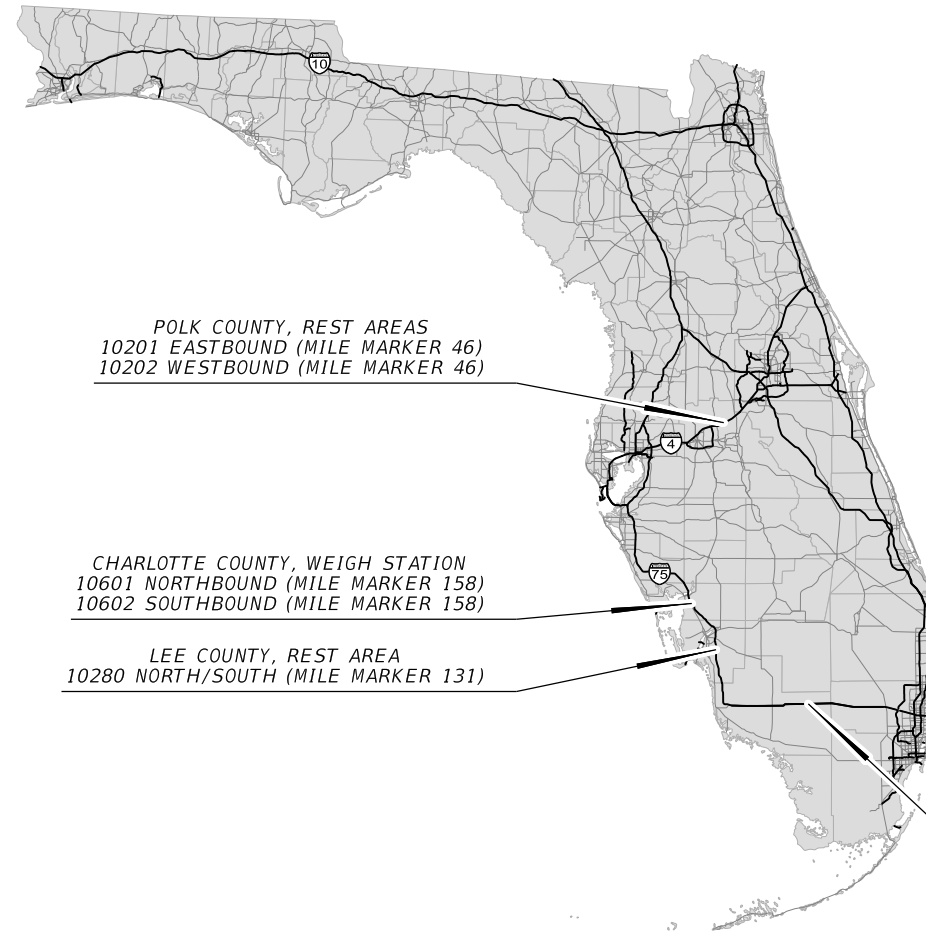
FINANCIAL PROJECT ID 440212-1-52-01
(FEDERAL FUNDS)



INDEX OF TPAS PLANS

SHEET NO.	SHEET DESCRIPTION
1	KEY SHEET
2	GENERAL NOTES
3	GUIDESIGN WORKSHEET
IT-01 TO IT-05B	ITS PLAN SHEETS

TRUCK PARKING AVAILABILITY SYSTEMS (TPAS)
INTELLIGENT TRANSPORTATION SYSTEM PLANS



ITS SHOP DRAWINGS
TO BE SUBMITTED TO:

50% PLANS PREPARED BY:

NOTE: THE SCALE OF THESE PLANS MAY
HAVE CHANGED DUE TO REPRODUCTION.

GOVERNING STANDARDS AND SPECIFICATIONS:

Florida Department of Transportation, 2016 Design Standards and revised Index Drawings as appended herein, and 2016 Standard Specifications for Road and Bridge Construction, as amended by Contract Documents.

For Design Standards click on the "Design Standards" link at the following web site:

<http://www.dot.state.fl.us/rddesign/DesignStandards>

For the Standard Specifications for Road and Bridge Construction click on the "Specifications" link at the following web site:

<http://www.dot.state.fl.us/specificationsoffice/StandardSpecifications>

KEY SHEET REVISIONS	
DATE	DESCRIPTION
FOR ILLUSTRATION PURPOSE ONLY	

TRUCK PARKING AVAILABILITY
SYSTEMS (TPAS) PLANS
ENGINEER OF RECORD: _____

P.E. NO.: _____

FISCAL YEAR	SHEET NO.
16	1

FDOT PROJECT MANAGER:

GENERAL NOTES

1. THE LOCATION(S) OF THE UTILITIES SHOWN IN THE PLANS ARE BASED ON LIMITED INVESTIGATION TECHNIQUES, AND MARK-UPS FROM UTILITY OWNERS. ALL UTILITIES SHOULD BE CONSIDERED APPROXIMATE ONLY.
2. THE CONTRACTOR SHALL NOTIFY UTILITY OWNERS LISTED THROUGH SUNSHINE STATE ONE CALL OF FLORIDA (811) TWO BUSINESS DAYS IN ADVANCE OF BEGINNING CONSTRUCTION ON THE JOB SITE.
3. FIBER OPTIC AND POWER PULL BOXES AND CONDUIT SHALL BE LOCATED WITHIN 100 FEET OF THE DEVICE THEY SUPPORT. ITS DEVICE LOCATIONS ARE APPROXIMATE AND MAY REQUIRE RELOCATION BY THE PROJECT ENGINEER. IF DEVICE RELOCATIONS OCCUR FOR ANY REASON, THE PULL BOXES AND CONDUIT SUPPORTING THAT DEVICE SHALL BE RELOCATED AND/OR EXTENDED.
4. INSTALL FIBER OPTIC CONDUIT FOR COMMUNICATION TO DEVICES AS SHOWN IN THE PLANS AND IN ACCORDANCE WITH ALL FDOT STANDARDS FOR CONDUIT INSTALLATION.
5. THE CONTRACTOR SHALL BE RESPONSIBLE FOR FURNISHING AND INSTALLING ABOVE GROUND TUBULAR ROUTE MARKERS PER SECTION 630 OF THE FDOT STANDARD SPECIFICATIONS. MARKERS SHALL BE PLACED AT A MAXIMUM OF 500 FEET AND AT EVERY PULL AND SPLICE BOX. A MARKER LABEL TEMPLATE SHALL BE PROVIDED FOR REVIEW.
6. THE CONDUIT SHALL BE SEALED WITH THE SPECIFIED DUCT PLUG AT THE TIME OF CONDUIT INSTALLATION AND AFTER FINAL FIBER INSTALLATION.
7. ELECTRICAL POWER SERVICE METERS SHALL HAVE A SEPARATE BREAKER FOR EACH ITS CIRCUIT.
8. THE CONTRACTOR SHALL HAND DIG (SOFT DIG) TO A DEPTH OF FOUR (4) FEET WHERE UTILITIES ARE IN CONFLICT PRIOR TO USE OF A MECHANICAL AUGER. ANY POTENTIAL CONFLICTS SHALL BE REPORTED TO THE PROJECT ENGINEER IMMEDIATELY.

UTILITY OWNERS

AT&T Distribution
Otis Keeve
954-723-2540

Century Link
Craig Clark
239-336-2003

City of Auburndale
John Dickson
863-965-5511

City of Punta Gorda
Steve Adams
941-575-3339

Comcast Cable
Mark Cook
215-286-1700

Duke Energy
Sharon Dear
407-905-3321

Fibernet Direct
Danny Haskett
305-552-2931

Florida Power & Light
Tracy Stern
386-329-5152

Frontier
David Reed
352-345-2348

Gulfstream Natural Gas
Fred DeLoach
941-723-7108

Lee County Electric Co-op
Tom Bailey
239-656-2414

Lee County Signal Department
Mike Padgett
239-533-9500

Lee County Irrigation
Richard M. Calkins Jr.
239-533-9400

Lee County Utilities
Terry Kelley
238-479-8181

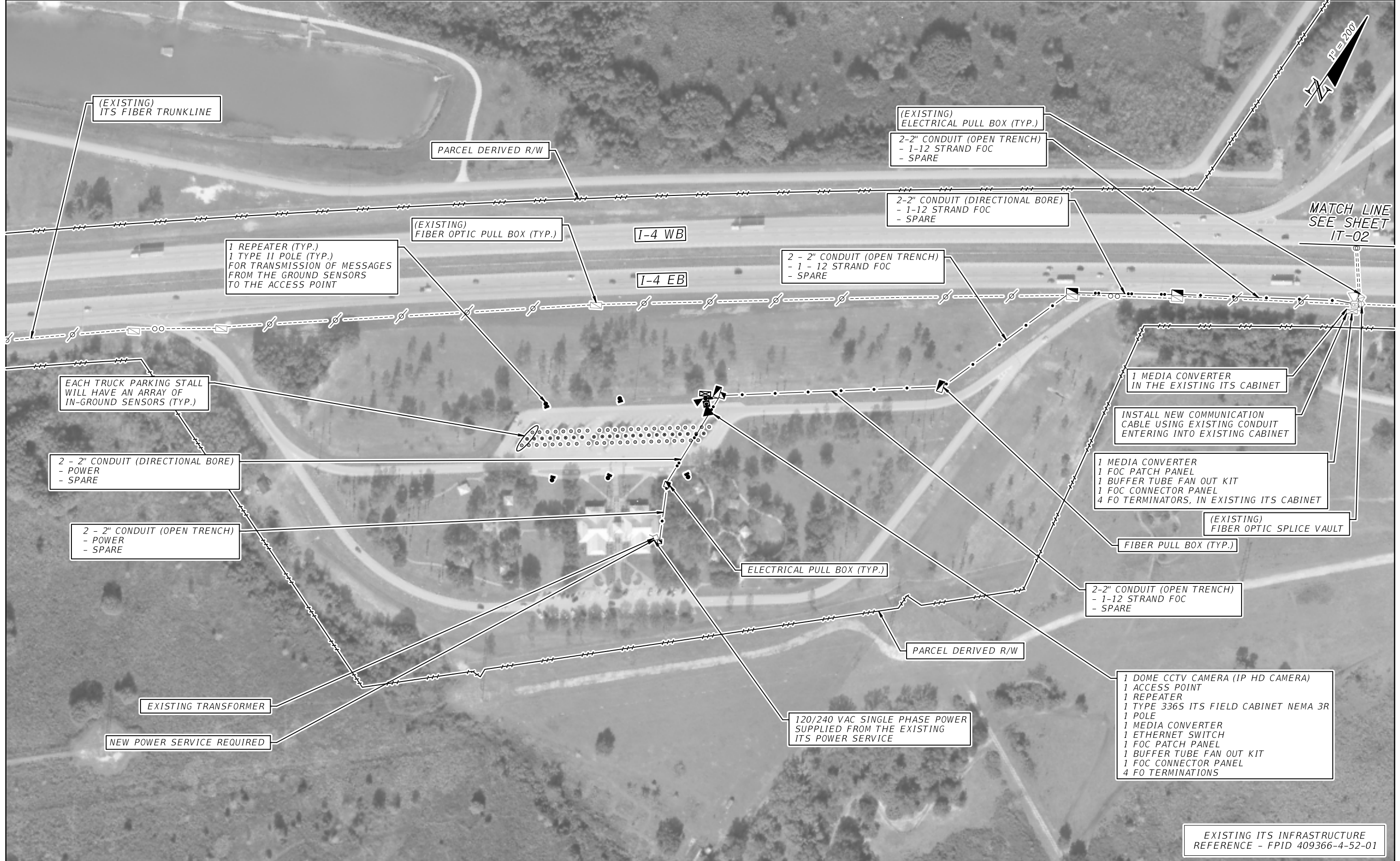
Manatee County Utilities
Keith McMahan
941-792-8811

TECO Peoples Gas
Marilyn Aloj
239-690-5517

LEGEND

EXISTING	PROPOSED	
		GROUND SENSORS
		REPEATER
		ACCESS POINT
		DETECTION ZONE
		CCTV WITH POLE
		MVDS
		MULTI-POST STATIC SIGN W/ ELECTRICAL DISPLAY SIGN
		BASE MOUNT CABINET
		POLE MOUNT CABINET
		PULL BOX
		FIBER OPTIC PULL BOX
		SPLICE VAULT
		POWER SERVICE
		POLE
		DMS
		CONDUIT, OPEN TRENCH
		CONDUIT, DIRECTIONAL BORE
		FIBER OPTIC RUN
		POWER RUN

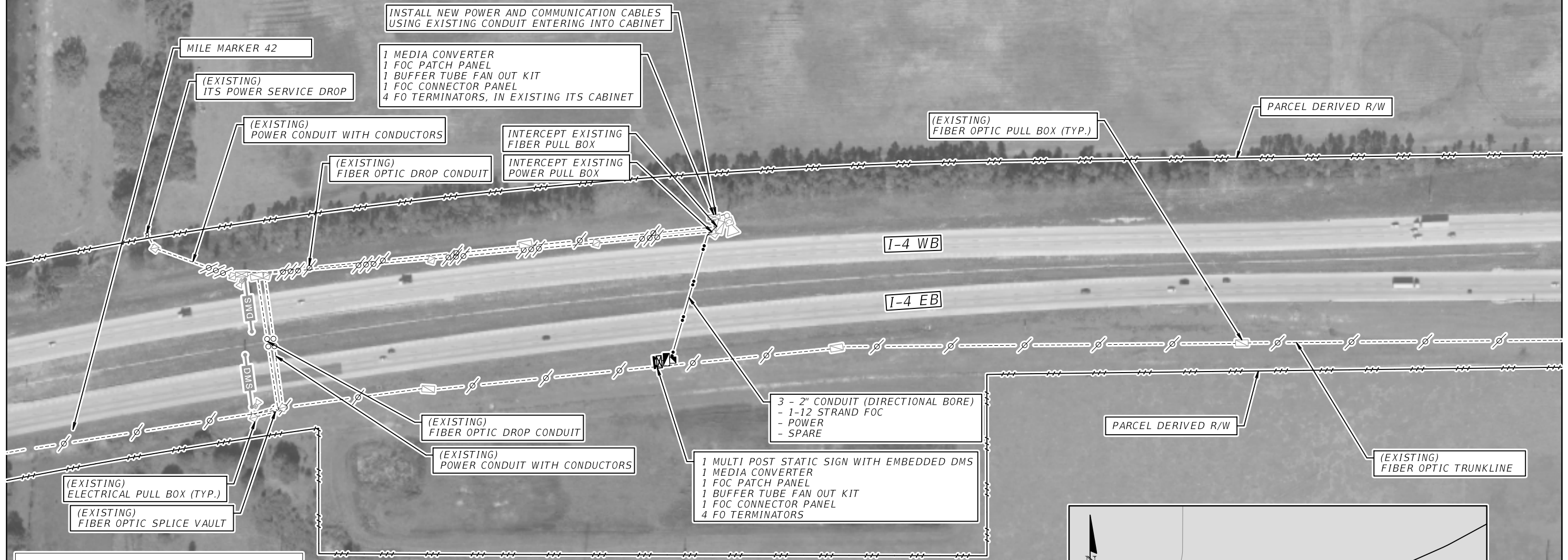
REVISIONS				STATE OF FLORIDA DEPARTMENT OF TRANSPORTATION			<i>GENERAL NOTES</i>	SHEET NO.
DATE	DESCRIPTION	DATE	DESCRIPTION	ROAD NO.	COUNTY	FINANCIAL PROJECT ID		2
	FOR ILLUSTRATION PURPOSE ONLY			VARIES	VARIES	440212-1-52-01		



EXISTING ITS INFRASTRUCTURE
REFERENCE - FPID 409366-4-52-01

REVISIONS				STATE OF FLORIDA DEPARTMENT OF TRANSPORTATION			TRUCK PARKING AVAILABILITY SYSTEM POLK COUNTY, FDOT DISTRICT 1 REST AREA 10201 (23 SPACES) EASTBOUND MILE MARKER 46	SHEET NO. IT-01
DATE	DESCRIPTION	DATE	DESCRIPTION	ROAD NO.	COUNTY	FINANCIAL PROJECT ID		
				I-4	POLK	440212-1-52-01		

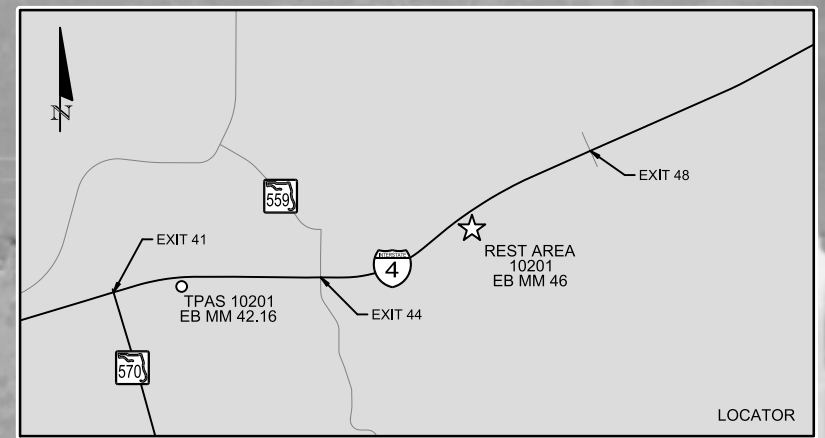
**FOR ILLUSTRATION
PURPOSE ONLY**



**REST AREA
TRUCK PARKING
XXX
SPACES AVAILABLE**

TRUCK PARKING AVAILABILITY SIGN WITH 3-DIGIT EMBEDDED DMS AT EB MM 42.16 WEST OF REST AREA (MM 46) (ADJUST SIGN LOCATION PER MUTCD SIGN SPACING REQUIREMENTS)

- 3-DIGIT EMBEDDED DMS
- POWER FROM NEAREST ITS CABINET
- POLE MOUNTED NEMA CABINET
- COMMUNICATION FROM NEAREST ITS CABINET

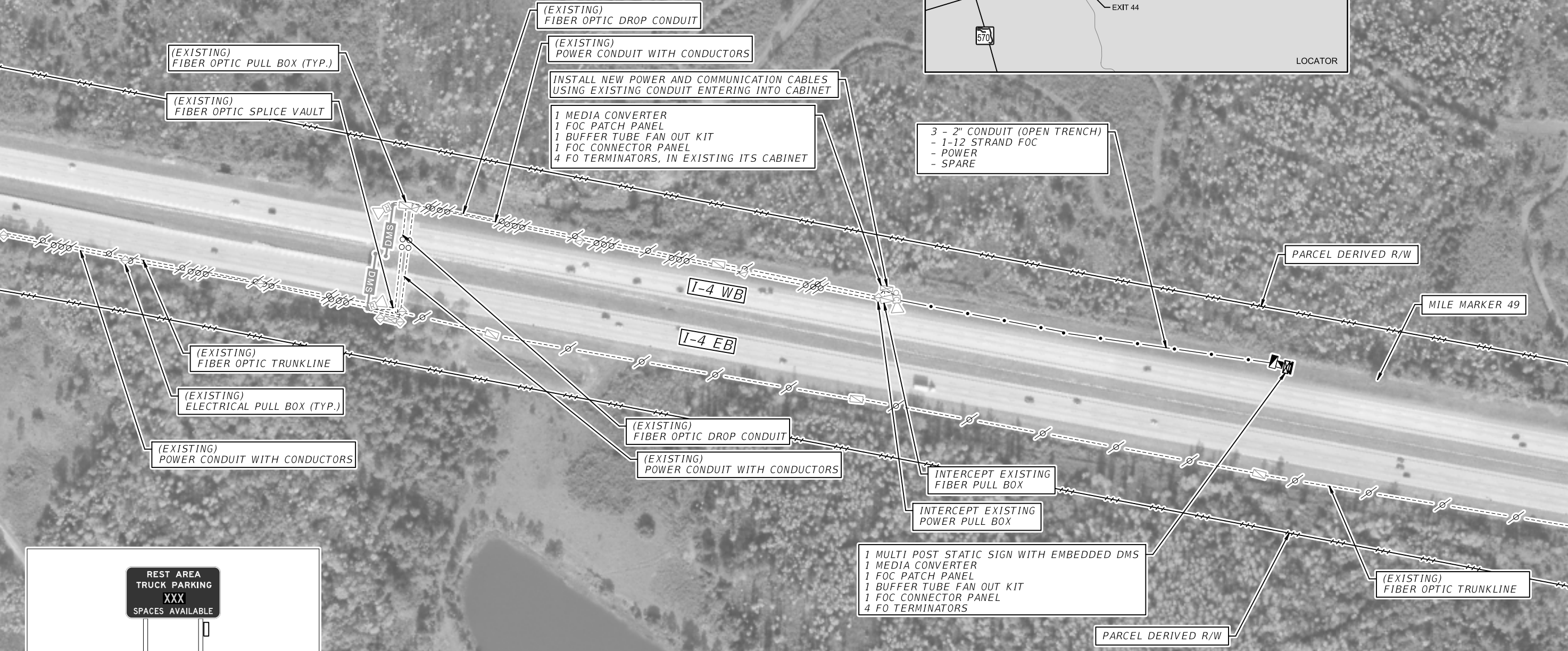
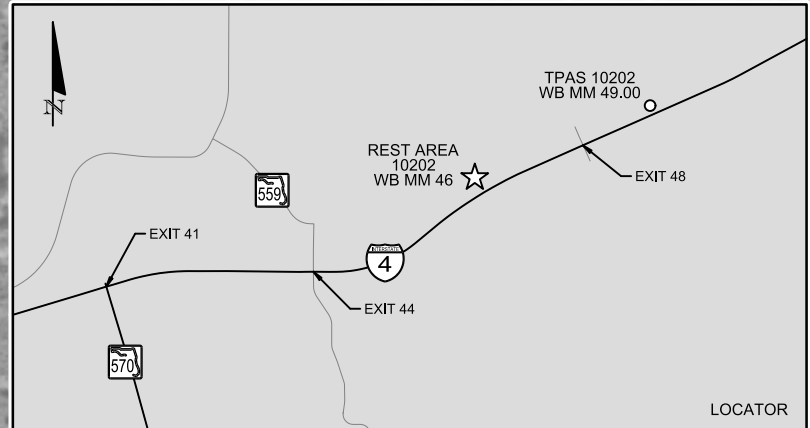


EXISTING ITS INFRASTRUCTURE REFERENCE
- FPID 409366-4-52-01

REVISIONS				STATE OF FLORIDA DEPARTMENT OF TRANSPORTATION			TRUCK PARKING AVAILABILITY SYSTEM POLK COUNTY, FDOT DISTRICT 1 TPAS SIGN 10201 EASTBOUND MILE MARKER 42.16	SHEET NO. IT-01A
DATE	DESCRIPTION	DATE	DESCRIPTION	ROAD NO.	COUNTY	FINANCIAL PROJECT ID		
			FOR ILLUSTRATION PURPOSE ONLY	I-4	POLK	440212-1-52-01		



REVISIONS				FOR ILLUSTRATION PURPOSE ONLY	STATE OF FLORIDA DEPARTMENT OF TRANSPORTATION			TRUCK PARKING AVAILABILITY SYSTEM POLK COUNTY, FDOT DISTRICT 1 REST AREA 10202 (24 SPACES) WESTBOUND MILE MARKER 46	SHEET NO. IT-02
DATE	DESCRIPTION	DATE	DESCRIPTION		ROAD NO.	COUNTY	FINANCIAL PROJECT ID		
					I-4	POLK	440212-1-52-01		




REST AREA
TRUCK PARKING
XXX
SPACES AVAILABLE

TRUCK PARKING AVAILABILITY SIGN WITH 3-DIGIT EMBEDDED DMS AT WB MM 49.00 EAST OF REST AREA (MM 46) (ADJUST SIGN LOCATION PER MUTCD SIGN SPACING REQUIREMENTS)
- 3-DIGIT EMBEDDED DMS
- POWER FROM NEAREST ITS CABINET
- POLE MOUNTED NEMA CABINET
- COMMUNICATION FROM NEAREST ITS CABINET

EXISTING ITS INFRASTRUCTURE REFERENCE
- FPID 409366-4-52-01

REVISIONS		DESCRIPTION		STATE OF FLORIDA DEPARTMENT OF TRANSPORTATION			TRUCK PARKING AVAILABILITY SYSTEM POLK COUNTY, FDOT DISTRICT 1 TPAS SIGN 10202 WESTBOUND MILE MARKER 49.00	SHEET NO. IT-02A
DATE	DESCRIPTION	DATE	DESCRIPTION	ROAD NO.	COUNTY	FINANCIAL PROJECT ID		
			FOR ILLUSTRATION PURPOSE ONLY	I-4	POLK	440212-1-52-01		




VMS 10290
SB MM 66.74

★
REST AREA
10290
NB/SB MM 63

75

LOCATOR

TRUCK PARKING AVAILABILITY SIGN WITH 3-DIGIT EMBEDDED DMS AT SB MM 66.74 NORTH OF REST AREA 10290 (MM 63) (ADJUST SIGN LOCATIONS PER MUTCD SIGN SPACING REQUIREMENTS)

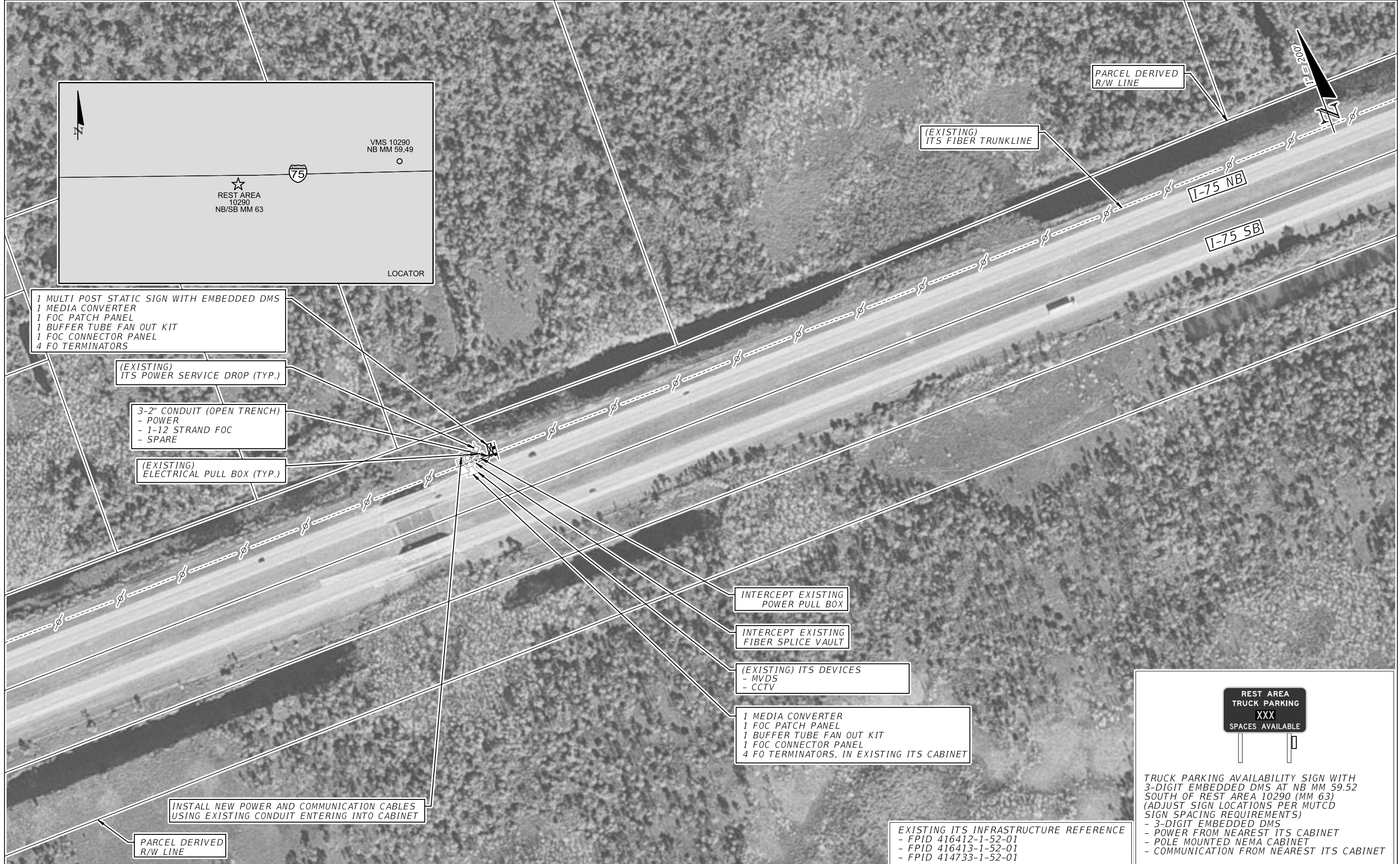
- 3-DIGIT EMBEDDED DMS
- POWER FROM NEAREST ITS CABINET
- POLE MOUNTED NEMA CABINET
- COMMUNICATION FROM NEAREST ITS CABINET

EXISTING ITS INFRASTRUCTURE REFERENCE

- FPID 416412-1-52-01
- FPID 416413-1-52-01
- FPID 414733-1-52-01

REVISIONS				STATE OF FLORIDA DEPARTMENT OF TRANSPORTATION			TRUCK PARKING AVAILABILITY SYSTEM COLLIER COUNTY, FDOT DISTRICT 1 TPAS SIGN 10290 SOUTHBOUND MILE MARKER 66.74	SHEET NO. IT-03A
DATE	DESCRIPTION	DATE	DESCRIPTION	ROAD NO.	COUNTY	FINANCIAL PROJECT ID		
				1-75	COLLIER	440212-1-52-01		

FOR ILLUSTRATION
PURPOSE ONLY



INSTALL NEW POWER AND COMMUNICATION CABLES USING EXISTING CONDUIT ENTERING INTO CABINET

PARCEL DERIVED R/W LINE

INTERCEPT EXISTING POWER PULL BOX

INTERCEPT EXISTING FIBER SPLICE VAULT

(EXISTING) ITS DEVICES
- MVDS
- CCTV

1 MEDIA CONVERTER
1 FOC PATCH PANEL
1 BUFFER TUBE FAN OUT KIT
1 FOC CONNECTOR PANEL
4 FO TERMINATORS, IN EXISTING ITS CABINET

EXISTING ITS INFRASTRUCTURE REFERENCE
- FPID 416412-1-52-01
- FPID 416413-1-52-01
- FPID 414733-1-52-01

REST AREA TRUCK PARKING
XXX
SPACES AVAILABLE

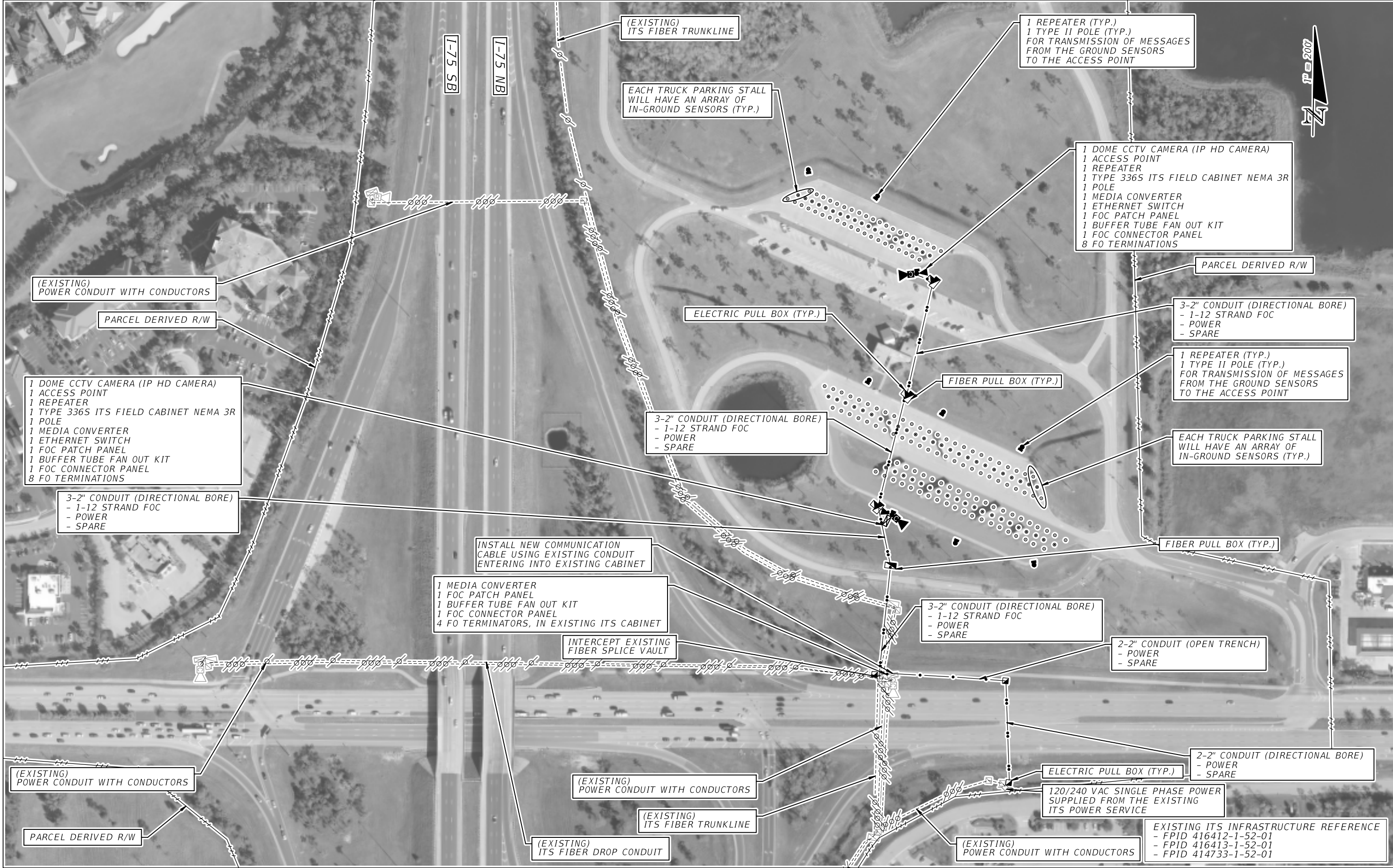
TRUCK PARKING AVAILABILITY SIGN WITH 3-DIGIT EMBEDDED DMS AT NB MM 59.52 SOUTH OF REST AREA 10290 (MM 63) (ADJUST SIGN LOCATIONS PER MUTCD SIGN SPACING REQUIREMENTS)
- 3-DIGIT EMBEDDED DMS
- POWER FROM NEAREST ITS CABINET
- POLE MOUNTED NEMA CABINET
- COMMUNICATION FROM NEAREST ITS CABINET

REVISIONS		DESCRIPTION	
DATE	DESCRIPTION	DATE	DESCRIPTION
FOR ILLUSTRATION PURPOSE ONLY			

STATE OF FLORIDA DEPARTMENT OF TRANSPORTATION		
ROAD NO.	COUNTY	FINANCIAL PROJECT ID
1-75	COLLIER	440212-1-52-01

TRUCK PARKING AVAILABILITY SYSTEM
COLLIER COUNTY, FDOT DISTRICT 1
TPAS SIGN 10290
NORTHBOUND MILE MARKER 59.52

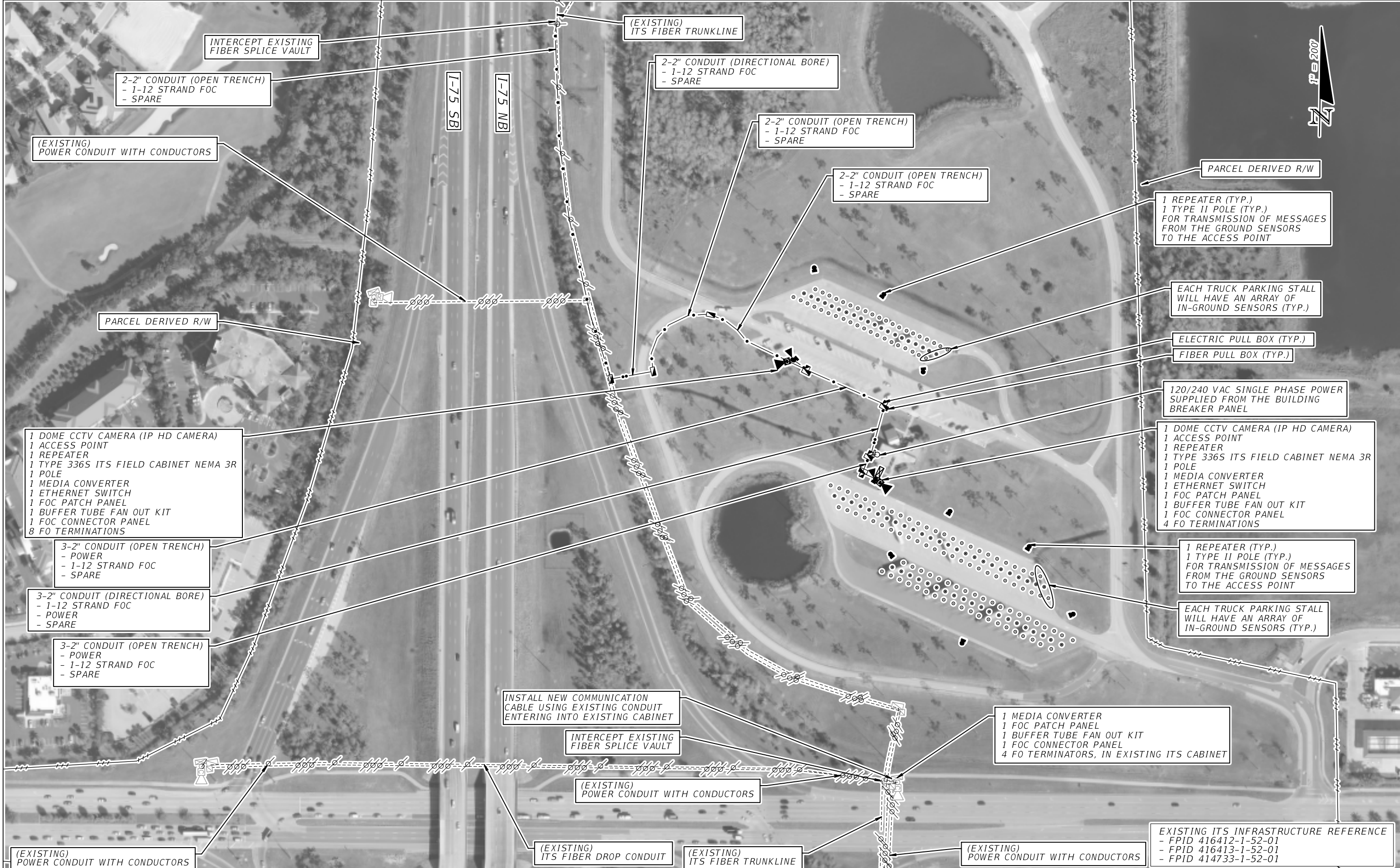
SHEET NO.
IT-03B



REVISIONS				STATE OF FLORIDA DEPARTMENT OF TRANSPORTATION			TRUCK PARKING AVAILABILITY SYSTEM LEE COUNTY, FDOT DISTRICT 1 REST AREA 10280 (64 SPACES) NORTH/SOUTH MILE MARKER 131	SHEET NO. IT-04
DATE	DESCRIPTION	DATE	DESCRIPTION	ROAD NO.	COUNTY	FINANCIAL PROJECT ID		
				I-75	LEE	440212-1-52-01		

**FOR ILLUSTRATION
PURPOSE ONLY**

EXISTING ITS INFRASTRUCTURE REFERENCE
 - FPID 416412-1-52-01
 - FPID 416413-1-52-01
 - FPID 414733-1-52-01



(EXISTING)
POWER CONDUIT WITH CONDUCTORS

2-2" CONDUIT (OPEN TRENCH)
- 1-12 STRAND FOC
- SPARE

INTERCEPT EXISTING
FIBER SPLICE VAULT

(EXISTING)
ITS FIBER TRUNKLINE

2-2" CONDUIT (DIRECTIONAL BORE)
- 1-12 STRAND FOC
- SPARE

2-2" CONDUIT (OPEN TRENCH)
- 1-12 STRAND FOC
- SPARE

2-2" CONDUIT (OPEN TRENCH)
- 1-12 STRAND FOC
- SPARE

PARCEL DERIVED R/W

1 REPEATER (TYP.)
1 TYPE II POLE (TYP.)
FOR TRANSMISSION OF MESSAGES
FROM THE GROUND SENSORS
TO THE ACCESS POINT

EACH TRUCK PARKING STALL
WILL HAVE AN ARRAY OF
IN-GROUND SENSORS (TYP.)

ELECTRIC PULL BOX (TYP.)
FIBER PULL BOX (TYP.)

120/240 VAC SINGLE PHASE POWER
SUPPLIED FROM THE BUILDING
BREAKER PANEL

1 DOME CCTV CAMERA (IP HD CAMERA)
1 ACCESS POINT
1 REPEATER
1 TYPE 336S ITS FIELD CABINET NEMA 3R
1 POLE
1 MEDIA CONVERTER
1 ETHERNET SWITCH
1 FOC PATCH PANEL
1 BUFFER TUBE FAN OUT KIT
1 FOC CONNECTOR PANEL
4 FO TERMINATIONS

1 REPEATER (TYP.)
1 TYPE II POLE (TYP.)
FOR TRANSMISSION OF MESSAGES
FROM THE GROUND SENSORS
TO THE ACCESS POINT

EACH TRUCK PARKING STALL
WILL HAVE AN ARRAY OF
IN-GROUND SENSORS (TYP.)

1 MEDIA CONVERTER
1 FOC PATCH PANEL
1 BUFFER TUBE FAN OUT KIT
1 FOC CONNECTOR PANEL
4 FO TERMINATORS, IN EXISTING ITS CABINET

INSTALL NEW COMMUNICATION
CABLE USING EXISTING CONDUIT
ENTERING INTO EXISTING CABINET

INTERCEPT EXISTING
FIBER SPLICE VAULT

(EXISTING)
POWER CONDUIT WITH CONDUCTORS

(EXISTING)
ITS FIBER DROP CONDUIT

(EXISTING)
ITS FIBER TRUNKLINE

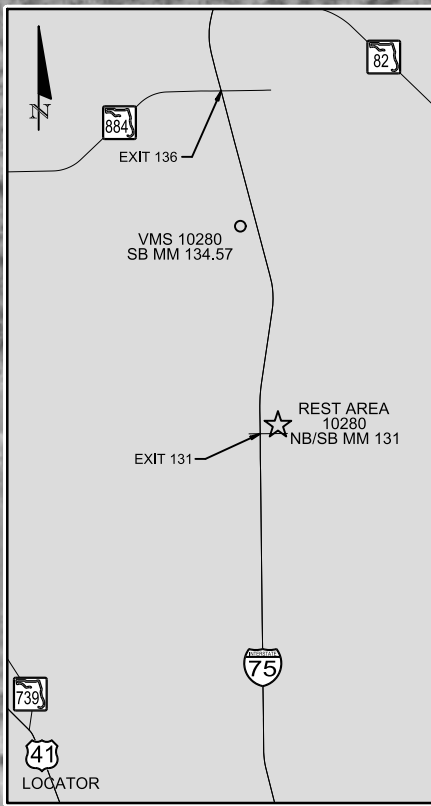
(EXISTING)
POWER CONDUIT WITH CONDUCTORS

EXISTING ITS INFRASTRUCTURE REFERENCE
- FPID 416412-1-52-01
- FPID 416413-1-52-01
- FPID 414733-1-52-01

REVISIONS	
DATE	DESCRIPTION
	OPTION 2
	FOR ILLUSTRATION PURPOSE ONLY

STATE OF FLORIDA DEPARTMENT OF TRANSPORTATION		
ROAD NO.	COUNTY	FINANCIAL PROJECT ID
I-75	LEE	440212-1-52-01

TRUCK PARKING AVAILABILITY SYSTEM LEE COUNTY, FDOT DISTRICT 1 REST AREA 10280 (64 SPACES) NORTH/SOUTH MILE MARKER 131	SHEET NO. IT-04
--	------------------------



TRUCK PARKING AVAILABILITY SIGN WITH 3-DIGIT EMBEDDED DMS AT SB MM 134.57 NORTH OF REST AREA 10280 (MM 131) (ADJUST SIGN LOCATIONS PER MUTCD SIGN SPACING REQUIREMENTS)

- 3-DIGIT EMBEDDED DMS
- POWER FROM NEAREST ITS CABINET
- POLE MOUNTED NEMA CABINET
- COMMUNICATION FROM NEAREST ITS CABINET

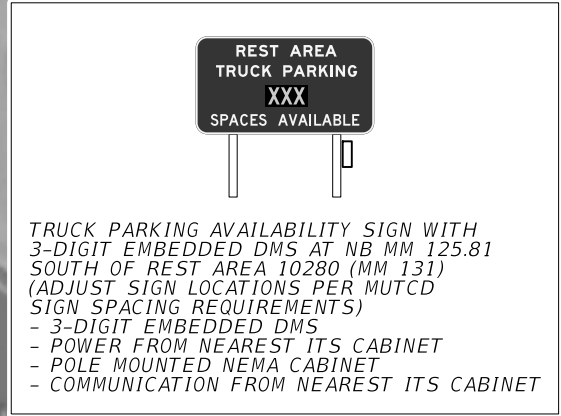
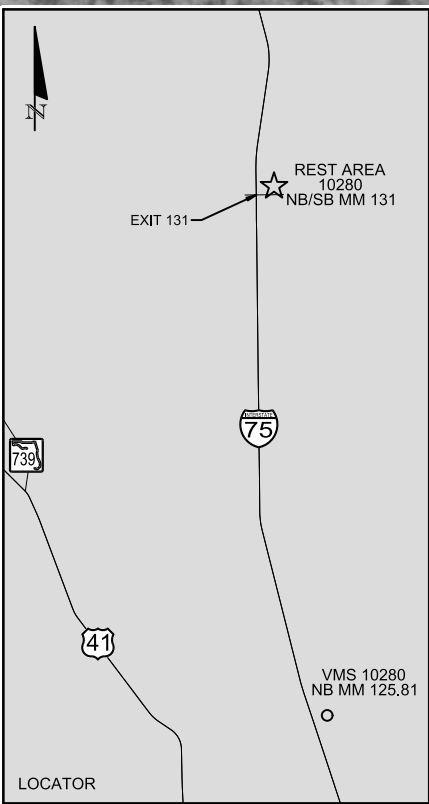
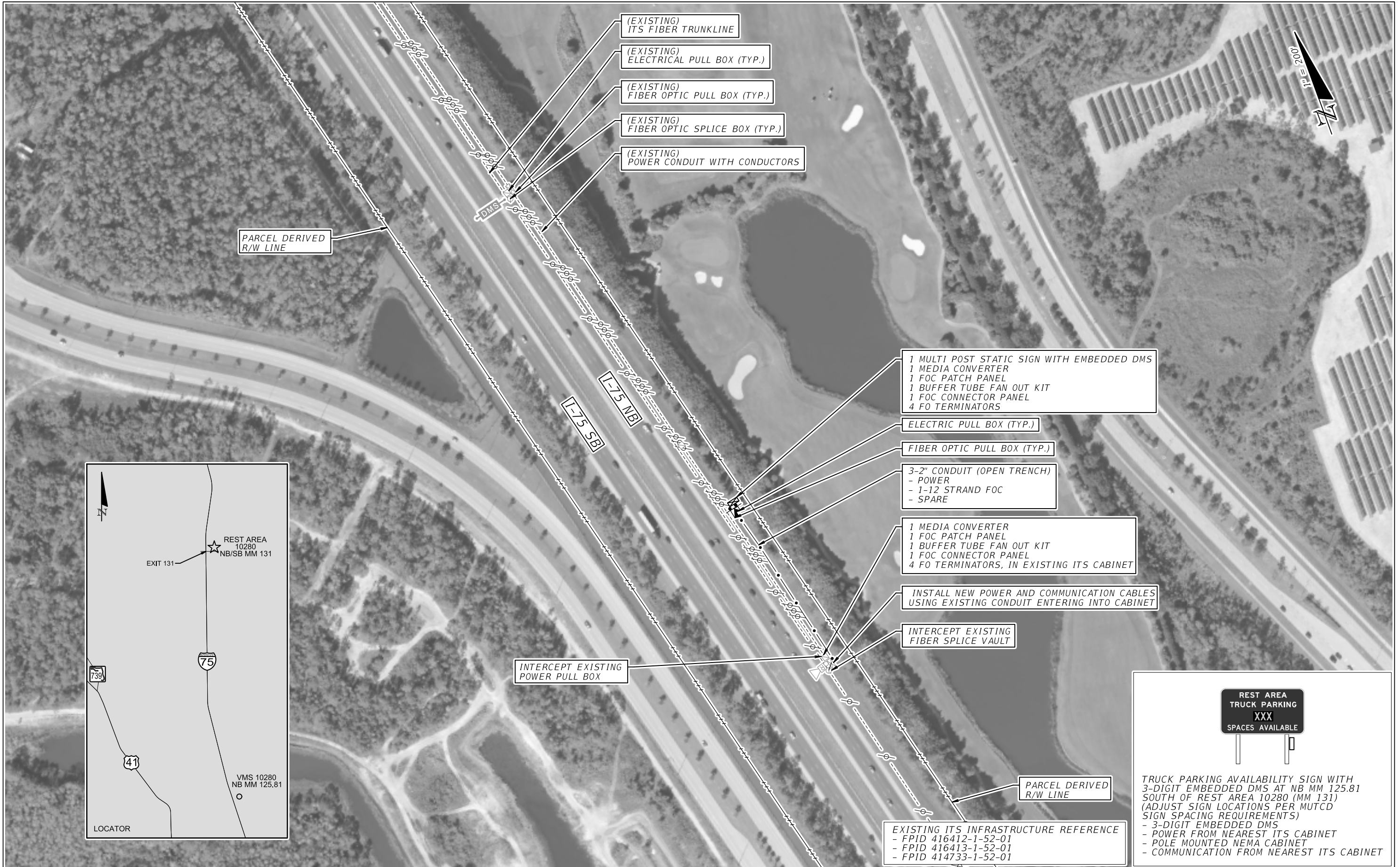
REVISIONS	
DATE	DESCRIPTION

FOR ILLUSTRATION PURPOSE ONLY

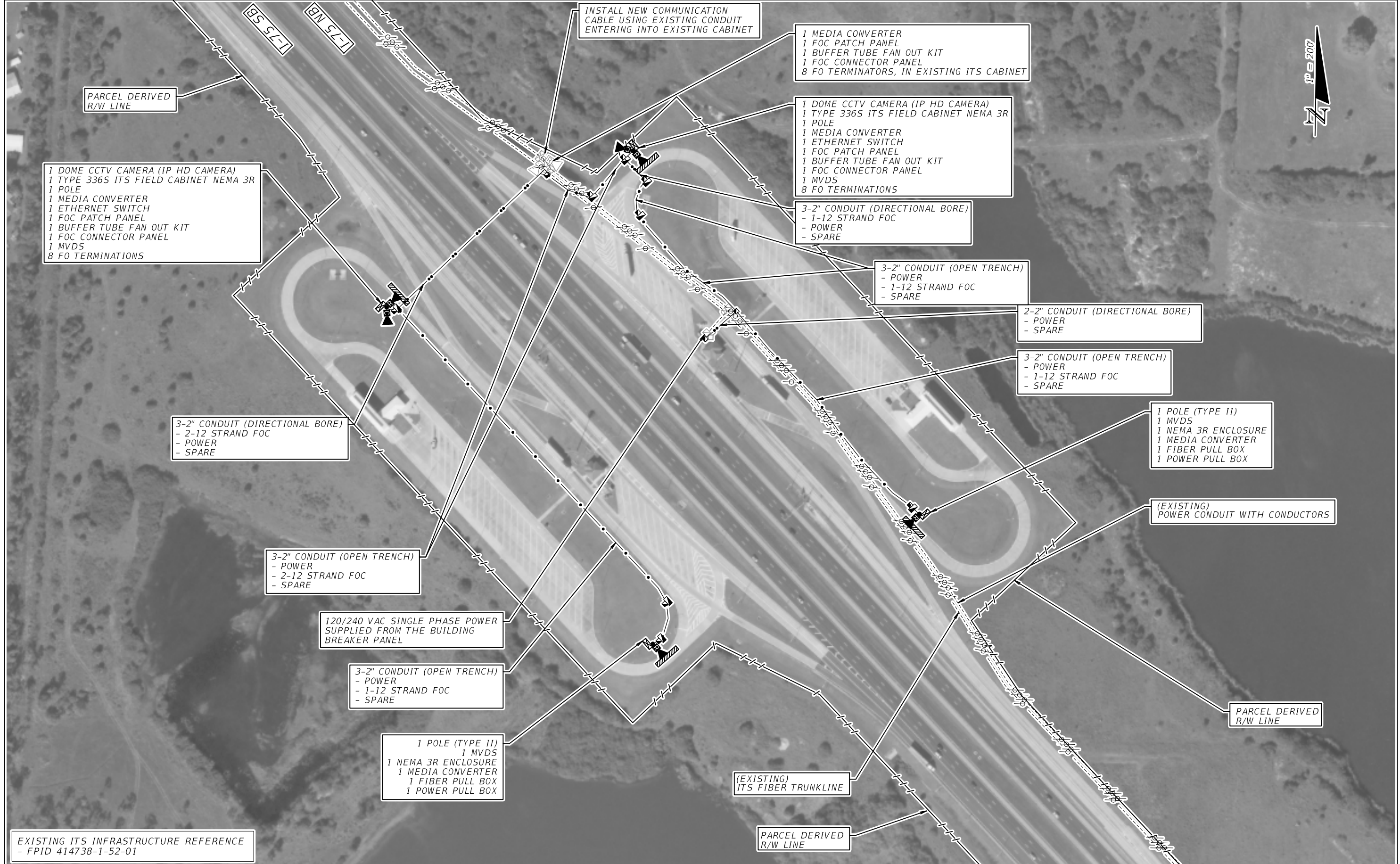
STATE OF FLORIDA DEPARTMENT OF TRANSPORTATION		
ROAD NO.	COUNTY	FINANCIAL PROJECT ID
I-75	LEE	440212-1-52-01

TRUCK PARKING AVAILABILITY SYSTEM
LEE COUNTY, FDOT DISTRICT 1
TPAS SIGN 10280
SOUTHBOUND MILE MARKER 134.57

SHEET NO.
IT-04A



REVISIONS		DESCRIPTION	STATE OF FLORIDA DEPARTMENT OF TRANSPORTATION			TRUCK PARKING AVAILABILITY SYSTEM LEE COUNTY, FDOT DISTRICT 1 TPAS SIGN 10280 NORTHBOUND MILE MARKER 125.81	SHEET NO. IT-04B
DATE	DESCRIPTION		ROAD NO.	COUNTY	FINANCIAL PROJECT ID		
		FOR ILLUSTRATION PURPOSE ONLY	I-75	LEE	440212-1-52-01		



DATE		DESCRIPTION		DATE	DESCRIPTION
FOR ILLUSTRATION PURPOSE ONLY					
REVISIONS					

STATE OF FLORIDA DEPARTMENT OF TRANSPORTATION			TRUCK PARKING AVAILABILITY SYSTEM CHARLOTTE COUNTY, FDOT DISTRICT 1 WEIGH STATION 10601 (23 SPACES) NORTHBOUND MILE MARKER 158 WEIGH STATION 10602 (23 SPACES) SOUTHBOUND MILE MARKER 158	SHEET NO. IT-05
ROAD NO.	COUNTY	FINANCIAL PROJECT ID		
I-75	CHARLOTTE	440212-1-52-01		

tsheppard 1/24/2017 1:09:55 PM \\tmaw00\jobs\63045\CADD\TW07\its\District 1\PLANIT26.DGN

PARCEL DERIVED R/W LINE

(EXISTING) ELECTRICAL PULL BOX (TYP.)

(EXISTING) ITS FIBER TRUNKLINE

(EXISTING) POWER CONDUIT WITH CONDUCTORS



1 MULTI POST STATIC SIGN WITH EMBEDDED DMS
 1 MEDIA CONVERTER
 1 FOC PATCH PANEL
 1 BUFFER TUBE FAN OUT KIT
 1 FOC CONNECTOR PANEL
 4 FO TERMINATORS

3-2" CONDUIT (OPEN TRENCH)
 - POWER
 - 1-12 STRAND FOC
 - SPARE

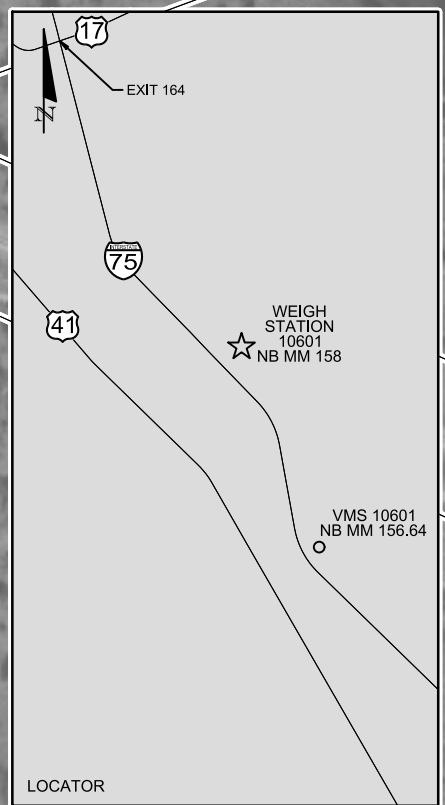
1 MEDIA CONVERTER
 1 FOC PATCH PANEL
 1 BUFFER TUBE FAN OUT KIT
 1 FOC CONNECTOR PANEL
 4 FO TERMINATORS, IN EXISTING ITS CABINET

INSTALL NEW POWER AND COMMUNICATION CABLES USING EXISTING CONDUIT ENTERING INTO CABINET

INTERCEPT EXISTING FIBER SPLICE VAULT

(EXISTING) ITS FIBER DROP CONDUIT

PARCEL DERIVED R/W LINE



I-75 NB

I-75 SB

INTERCEPT EXISTING POWER PULL BOX

(EXISTING) FIBER OPTIC SPLICE BOX (TYP.)

(EXISTING) FIBER OPTIC PULL BOX (TYP.)

REST AREA
 TRUCK PARKING
 XXX
 SPACES AVAILABLE

TRUCK PARKING AVAILABILITY SIGN WITH 3-DIGIT EMBEDDED DMS AT NB MM 156.64 SOUTH OF WEIGH STATION 10601 (MM 158) (ADJUST SIGN LOCATIONS PER MUTCD SIGN SPACING REQUIREMENTS)
 - 3-DIGIT EMBEDDED DMS
 - POWER FROM NEAREST ITS CABINET
 - POLE MOUNTED NEMA CABINET
 - COMMUNICATION FROM NEAREST ITS CABINET

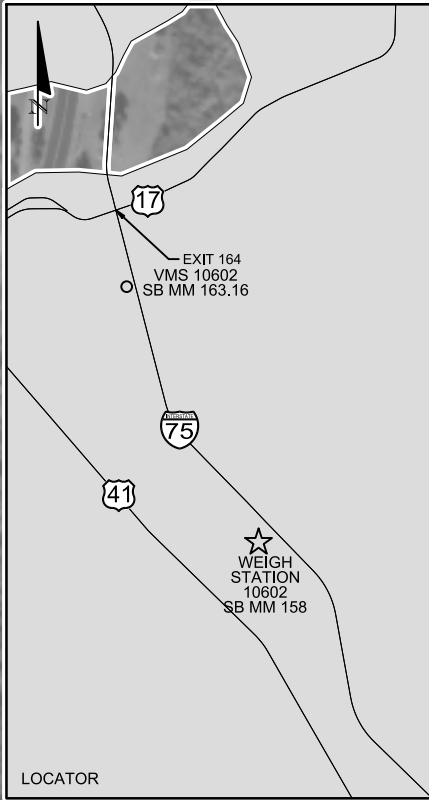
EXISTING ITS INFRASTRUCTURE REFERENCE - FPID 414738-1-52-01

REVISIONS		DESCRIPTION	
DATE	DESCRIPTION	DATE	DESCRIPTION
FOR ILLUSTRATION PURPOSE ONLY			

STATE OF FLORIDA DEPARTMENT OF TRANSPORTATION		
ROAD NO.	COUNTY	FINANCIAL PROJECT ID
I-75	CHARLOTTE	440212-1-52-01

TRUCK PARKING AVAILABILITY SYSTEM
 CHARLOTTE COUNTY, FDOT DISTRICT 1
 TPAS SIGN 10601
 NORTHBOUND MILE MARKER 156.64

SHEET NO.
 IT-05A



TRUCK PARKING AVAILABILITY SIGN WITH 3-DIGIT EMBEDDED DMS AT SB MM 163.16 NORTH OF WEIGH STATION 10602 (MM 158) (ADJUST SIGN LOCATIONS PER MUTCD SIGN SPACING REQUIREMENTS)

- 3-DIGIT EMBEDDED DMS
- POWER FROM NEAREST ITS CABINET
- POLE MOUNTED NEMA CABINET
- COMMUNICATION FROM NEAREST ITS CABINET

REVISIONS				STATE OF FLORIDA DEPARTMENT OF TRANSPORTATION			TRUCK PARKING AVAILABILITY SYSTEM CHARLOTTE COUNTY, FDOT DISTRICT 1 TPAS SIGN 10602 SOUTHBOUND MILE MARKER 163.16		SHEET NO.
DATE	DESCRIPTION	DATE	DESCRIPTION	ROAD NO.	COUNTY	FINANCIAL PROJECT ID			
				I-75	CHARLOTTE	440212-1-52-01			IT-05B
FOR ILLUSTRATION PURPOSE ONLY									