

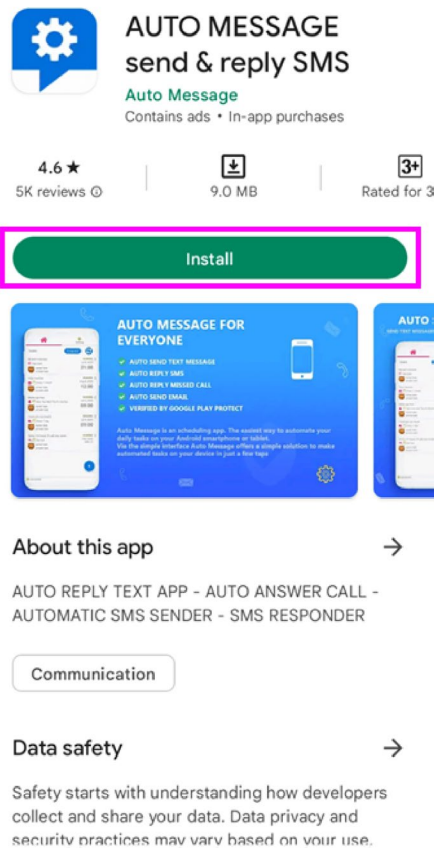
Auto-Reply Tutorial for Android Users

Intro

Currently, Android phones do not offer a universal, customized do not disturb auto-reply feature. There are third-party plugins that can be used. However, each Android phone is different, and you should find the plugin that works best for you. We had success with an app called “AUTO MESSAGE send & reply SMS”. Here are a few steps to guide you:

Step 1

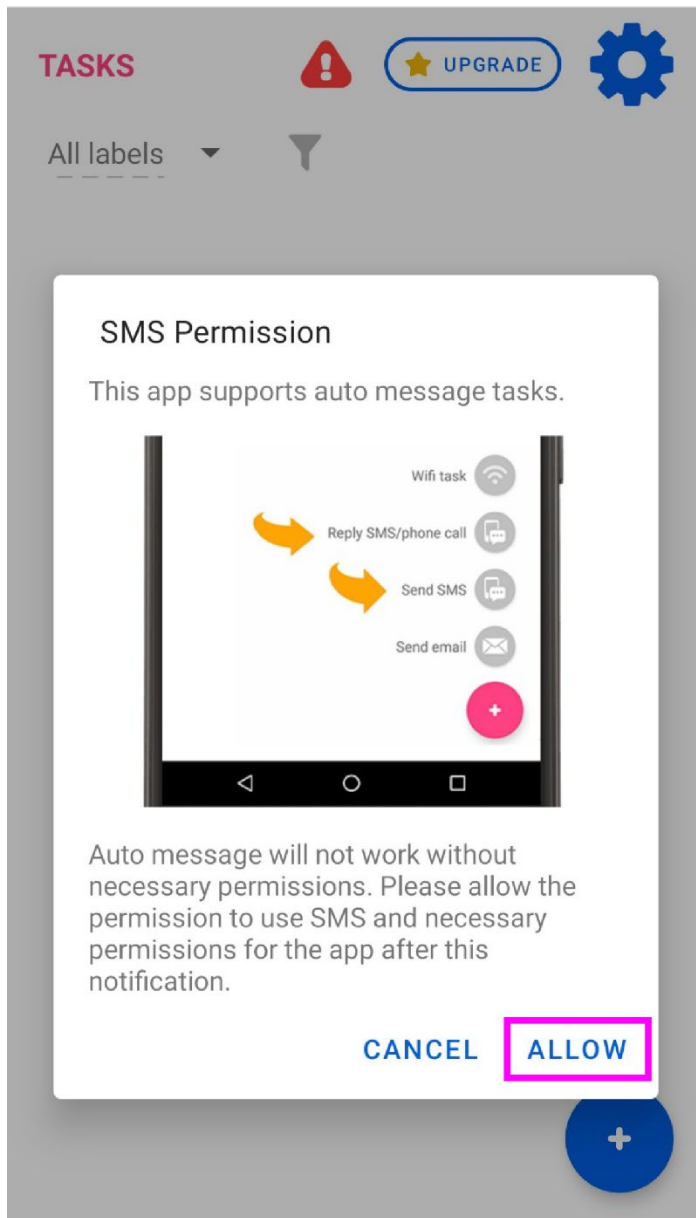
Install and open [AUTO MESSAGE send & reply SMS](#) from the Google Play Store.



Auto-Reply Tutorial for Android Users

Step 2

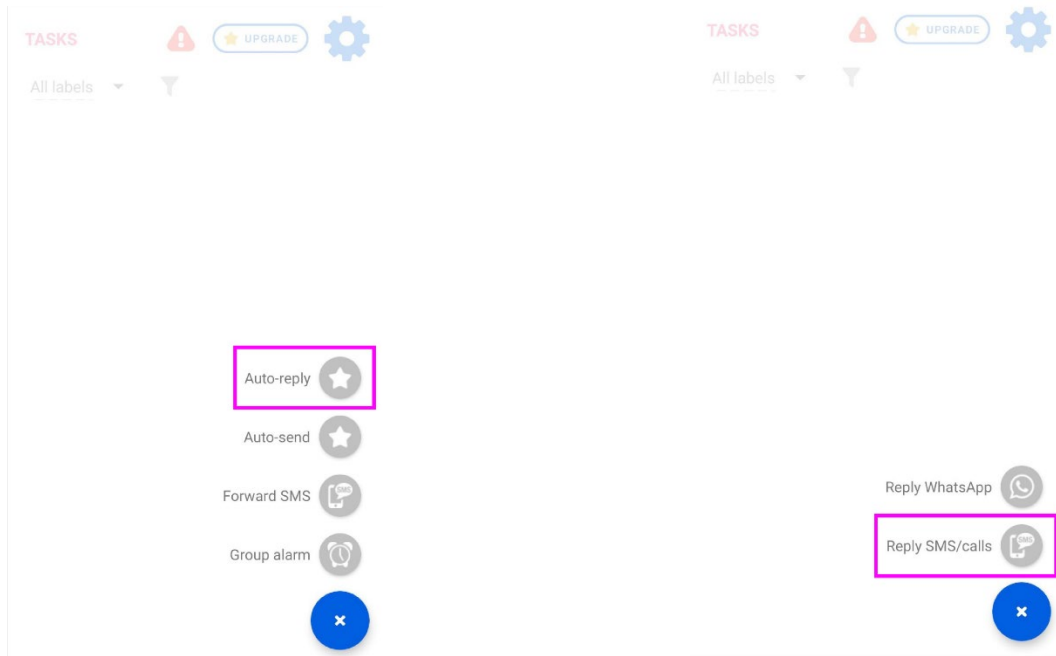
You'll immediately get a popup asking for certain permissions. Tap "Grant Permission," then "Allow" to give the app access to your text messages.



Auto-Reply Tutorial for Android Users

Step 3




Tap the blue plus button on the bottom right and select, "Auto-reply". Then select "Reply SMS/Phone Call" from the menu.



Auto-Reply Tutorial for Android Users

Step 4

Now, add a title to your auto-reply. Then, type your auto-reply message, or copy and paste one of our custom, Target Zero-branded options.

 **REPLY SMS/CALLS**  

MESSAGE CONTENT

Title
Test

Message content
Target Zero rules!

no label

TARGET

receive SMS

reject/ignore a call

End call

SIM All ▾

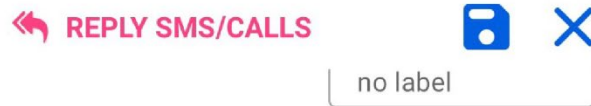
WHEN

MON TUE WED THU FRI

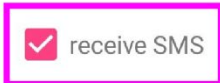
Auto-Reply Tutorial for Android Users

Step 5

Next, check the “receive SMS” option under the header “Target.” If you wish to auto-reply to phone calls as well, you can also select “reject/ignore a call”.



TARGET



reject/ignore a call

End call

SIM All ▾

WHEN

MON TUE WED THU FRI

SAT SUN

Start at _____ until _____

*Leave blank or enter the same for both time frames
if you want to run 24 hours/day*

Auto-Reply Tutorial for Android Users

Step 6

Schedule when you want the auto-reply to be active. Or select all dates to have the auto-reply active whenever you choose to activate it.

REPLY SMS/CALLS

no label

TARGET

receive SMS

reject/ignore a call

End call

SIM All

WHEN

MON TUE WED THU FRI

SAT SUN



Start at _____ until _____

Leave blank or enter the same for both time frames if you want to run 24 hours/day

Auto-Reply Tutorial for Android Users

Step 7

Adjust the Reply List if you want to customize who receives your auto-reply message.


⏪ **REPLY SMS/CALLS**  

Start at _____ until _____


Leave blank or enter the same for both time frames if you want to run 24 hours/day


Stop time: Not set _____


THE REPLY LIST

To everyone 

Do not accept short code (less than 9 digits)

 **ADDITIONAL CONDITIONS**




 **ADVANCED OPTIONS**

 **SAVE TO CLOUD**

Auto-Reply Tutorial for Android Users

Step 8

Hit the save button at the top of the screen, and your auto-reply message will be activated.

 **REPLY SMS/CALLS**  

Start at _____ until _____


Leave blank or enter the same for both time frames if you want to run 24 hours/day


Stop time: Not set _____


THE REPLY LIST

To everyone ▼

Do not accept short code (less than 9 digits)

 **ADDITIONAL CONDITIONS**

 **ADVANCED OPTIONS**

 **SAVE TO CLOUD**

Auto-Reply Tutorial for Android Users

Step 9

To deactivate and/or reactivate, click the auto-reply you've just set up. Then, scroll to the bottom to select or deselect the "Active" toggle. Then click the save icon at the top when complete. Use this method to easily toggle between activated and deactivated states before and after driving. Safe travels!

The screenshot displays the 'TASKS' section on the left and the 'REPLY SMS/CALLS' settings on the right. In the 'TASKS' list, a task named 'Test' is highlighted with a red border; it includes a red double-left arrow icon, the label '[ID-1]', a calendar icon, and the days 'Mon Tue Wed Thu Fri Sat Sun'. The status 'ACTIVATED' is shown in green text with a three-dot menu icon to its right. At the bottom of the tasks list is a blue circular button with a white plus sign. The 'REPLY SMS/CALLS' panel features a red double-left arrow icon and a red-bordered save icon with an 'X' at the top right. Below this is the instruction: 'Leave blank or enter the same for both time frames if you want to run 24 hours/day'. The 'Stop time' is set to 'Not set'. Under 'THE REPLY LIST', the recipient is 'To everyone' and there is an unchecked checkbox for 'Do not accept short code (less than 9 digits)'. Two blue buttons with white stars are labeled 'ADDITIONAL CONDITIONS' and 'ADVANCED OPTIONS'. A teal button with a cloud icon is labeled 'SAVE TO CLOUD'. At the bottom of the settings panel, there is a red trash icon, a red-bordered 'Active' toggle switch (which is currently turned on), and a 'LOG' button with a clock icon.