

THE CONNECTOR

SW 10TH STREET CONNECTOR PROJECT E-NEWSLETTER



THE CONNECTOR: SW 10th Street Connector Project E-Newsletter

Project Website: www.sw10street.com

Volume 1, Issue 2 | March 2024

This e-newsletter highlights the numerous benefits the SW 10th Street Connector Project will bring to both the region and the community and includes updates to help keep the community informed.

In this edition:

[Project Spotlight](#) • [Project Benefits and Features](#) •

[Project Status](#) • [Target Zero FL](#) • [Contact Us](#)

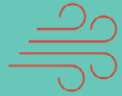
Project Spotlight

The SW 10th Street Connector Project will significantly relieve regional congestion by removing traffic from local SW 10th Street. To maximize usage and functionality, the project provides direct connections with I-95 and 95 Express for the SW 10th Street Connector with all northbound and southbound I-95 traffic. Watch the video below to see these new features and how the SW 10th Street Connector Project serves local residents and businesses more efficiently while offering full access to I-95.



Project Benefits and Features

Each newsletter will highlight different project benefits. Learn more about these benefits below.



IMPROVED AIR QUALITY

Less traffic congestion & delays
improve air quality.

Based on the results of FDOT's PD&E study, carbon monoxide emissions that may result from the SW 10th Street Connector project are expected to remain within national air quality standards. To mitigate impacts to the surrounding areas during the construction phase, FDOT will implement proactive mitigation measures – including watering construction zones to avoid dust from leaving work areas.



Green space and shared-use path to the south of local SW 10th Street near SW 28th Avenue



REDUCED CONGESTION

Alleviates the safety & operational issues
caused by the current level of congestion.

A major benefit from the SW 10th Street Connector project is lower drive time. With the current traffic conditions, the average commuter will sit in traffic for as much as 30 minutes every day during the evening rush hour, or up to 130 hours each year. The completed project will address the present safety and mobility challenges and provide that missing link in the region's limited access highway network – giving you back that extra time.



Local SW 10th Street with connector lanes elevated over Powerline Road: looking northwest

Project Status and Process

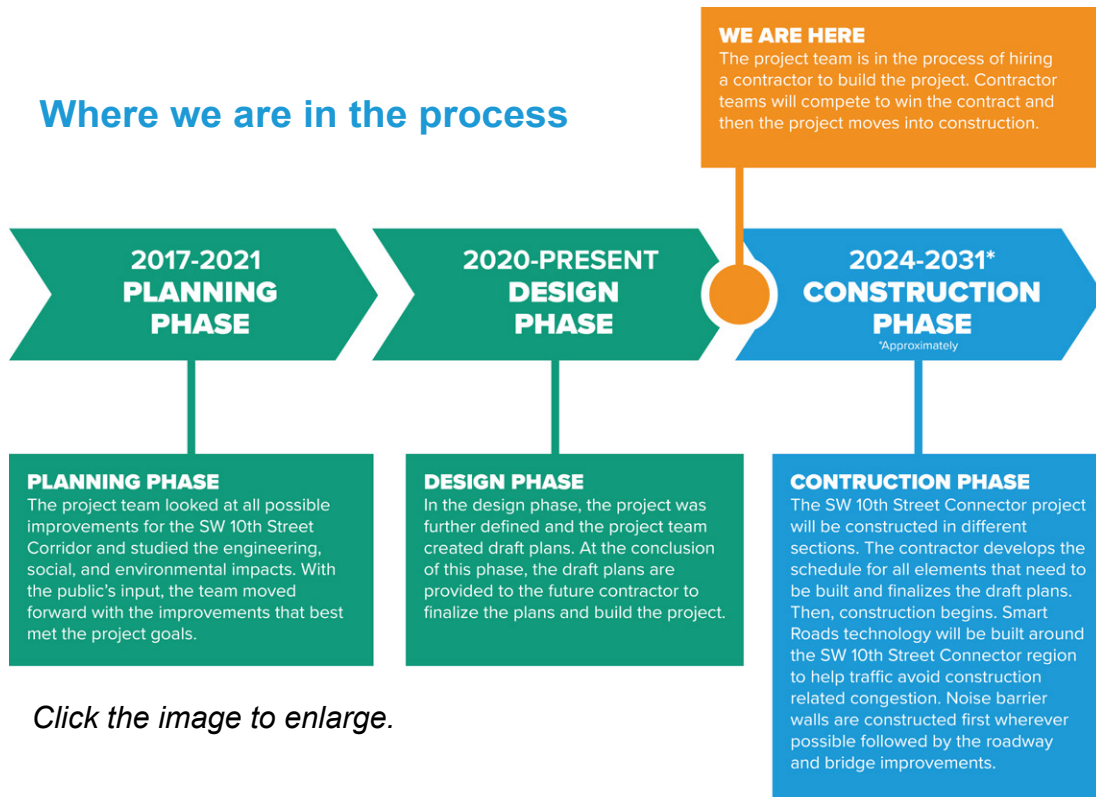
Project Status

The SW 10th Street Connector project is on track to select a Design-Build construction contractor by Summer 2024. Once FDOT selects the contractor team, they will begin to plan out all the construction activities, sequencing of work, and the entire project construction timeline. Their pre-construction planning analyzes the needs of the I-95 at SW 10th Street Interchange and the rest of the SW 10th Street corridor to the west and identifies which parts need to be constructed first for the most efficient work plan.

As the pre-construction planning continues, FDOT will implement advanced traffic management and optimization technology, also known as “Smart Roads,” on the state roads surrounding the construction area. These devices will support safe and efficient mobility in the area.

Current advance utility relocation field work is being performed on the north and south side of SW 10th Street, between Powerline Road and Military Trail. The existing transmission poles along the north side of SW 10th Street are being removed and replaced with lower height distribution poles as part of clearing the right of way to accommodate the proposed noise barrier wall along the north side of the roadway. In addition, the poles on the south side of SW 10th Street are being relocated to accommodate the SW 10th Street Connector lanes and reconstructed local SW 10th Street lanes.

Where we are in the process



Click the image to enlarge.

To learn more about the project and the estimated timeline - visit our [website](#) and sign up for email updates.

Turn on Do Not Disturb: Target Zero FL

We all know not to look at our phones while driving, but a text message notification can tempt you to take a quick glance. Help yourself make safe choices on the road by enabling an autoreply feature that sends a message to those trying to reach you while you're driving. The best part of the distraction-free feature? It's customizable!

The FDOT Target Zero Florida Initiative has created a plethora of "Do Not Disturb" messages for you to add to your phone. Join Target Zero's mission to bring traffic fatalities down to ZERO and check out some great options to spice up your DND message: [Aggressive \(fdot.gov\)](https://www.fl.gov/aggressive)



An average of eight people are killed every day on Florida roadways. Target Zero is a statewide initiative dedicated to bringing transportation-related injuries and deaths across Florida down to ZERO.

Be a part of the change – learn about Target Zero Florida.

[Learn More About Target Zero](#)

Contact Us

Community feedback is at the core of all we do. FDOT works with the public to balance their community vision with the community's transportation needs. This is routine on all of our projects to ensure that Florida's infrastructure is safe, resilient, and efficient for many years into the future.

If you would like to speak with a member of the SW 10th Street Connector Project team, please call (954) 777-4468, drop a comment on the project website, or email at Vanita.Saini@dot.state.fl.us.

[Contact Us](#)

More about the project:

As a key regional connection in Broward County, Florida, SW 10th Street currently serves as a critical transportation corridor for all types of traffic – including residential, commuter, commercial, truck, freight, bicycle, and pedestrian traffic. The SW 10th Street Connector Project will provide two roadways along SW 10th Street in Deerfield Beach, Florida. One roadway, the SW 10th Street Connector lanes, will improve regional connectivity by connecting the Sawgrass Expressway with I-95. The other roadway, local SW 10th Street, will become a "Complete Street" that will incorporate a shared-use path and provide connectivity to all existing local properties and the local roadway network.

