



# SW 10<sup>th</sup> Street Connector / I-95 Interchange

## Project Information Session

November 18, 2021

# Ground Rules

---

- Please mute microphone
- Hold all questions until the end of the presentation
- Raise hand for questions and wait to be recognized

# Presentation Outline

---

- SW 10<sup>th</sup> Connector Improvements- Achieving FDOT Priorities and Objectives
- DBE/SB Program
- SW 10<sup>th</sup> St Connector Overall Program Summary
- SW 10<sup>th</sup> St Connector/I-95 Interchange (436964-2) - Summary of Planned Improvements
- Risk Sharing Strategies
- Next Steps for Project Implementation

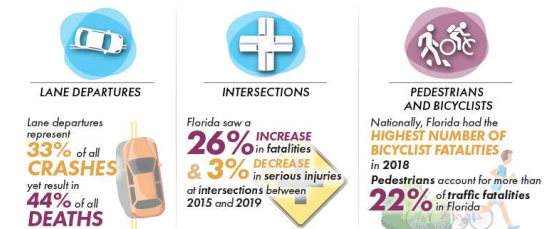
# SW 10th St Connector Improvements Achieving FDOT Priorities And Objectives

- Secretary Kevin Thibault's focus on the Vital Few
  - Improve Safety
  - Enhance Mobility
  - Inspire Innovation
- SW 10<sup>th</sup> Street Improvement Projects
  - Expand Mobility and Transportation Options
- Work Zone Safety – a focus area from Central Office to the District
  - Work zone Safety is one of the emphasis areas of the Florida Strategic Highway Safety Plan
  - Using ITS and CAV technologies in and around work zones has been a focus area identified by both CO and D4



## VITAL FEW

Top 3 Safety Emphasis Areas of Florida's Strategic Highway Safety Plan and FDOT's Vital Few Safety Focus



# DBE/SB Program

## Assisting Small and Disadvantaged Businesses

### FDOT Support Services Programs

*Thomas Huggins, DBE Coordinator*

*Moya Bailey, Field Consultant DBE Support Services Program*

*Mark Jackel, Field Consultant DBE Support Services Program*



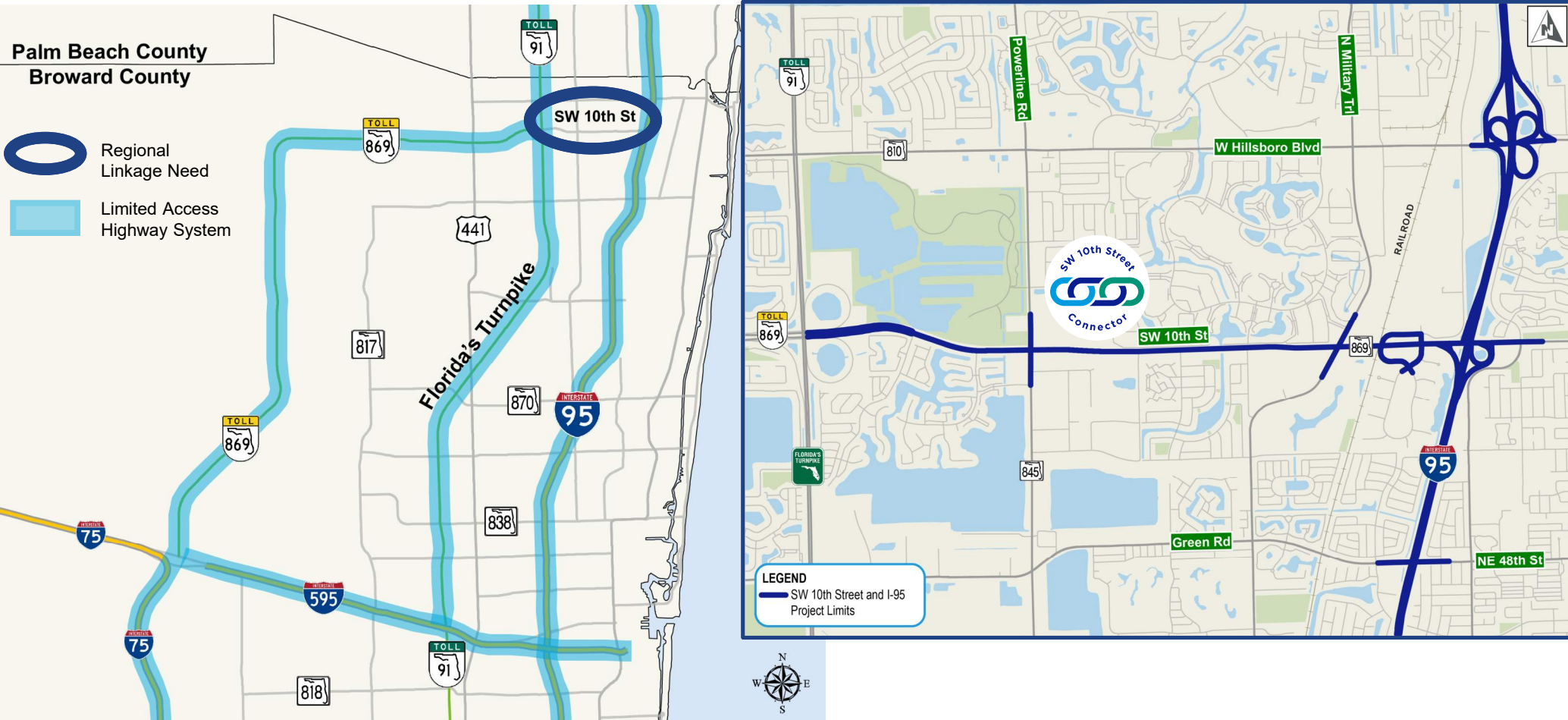


# SW 10th St Connector – Overall Program Summary

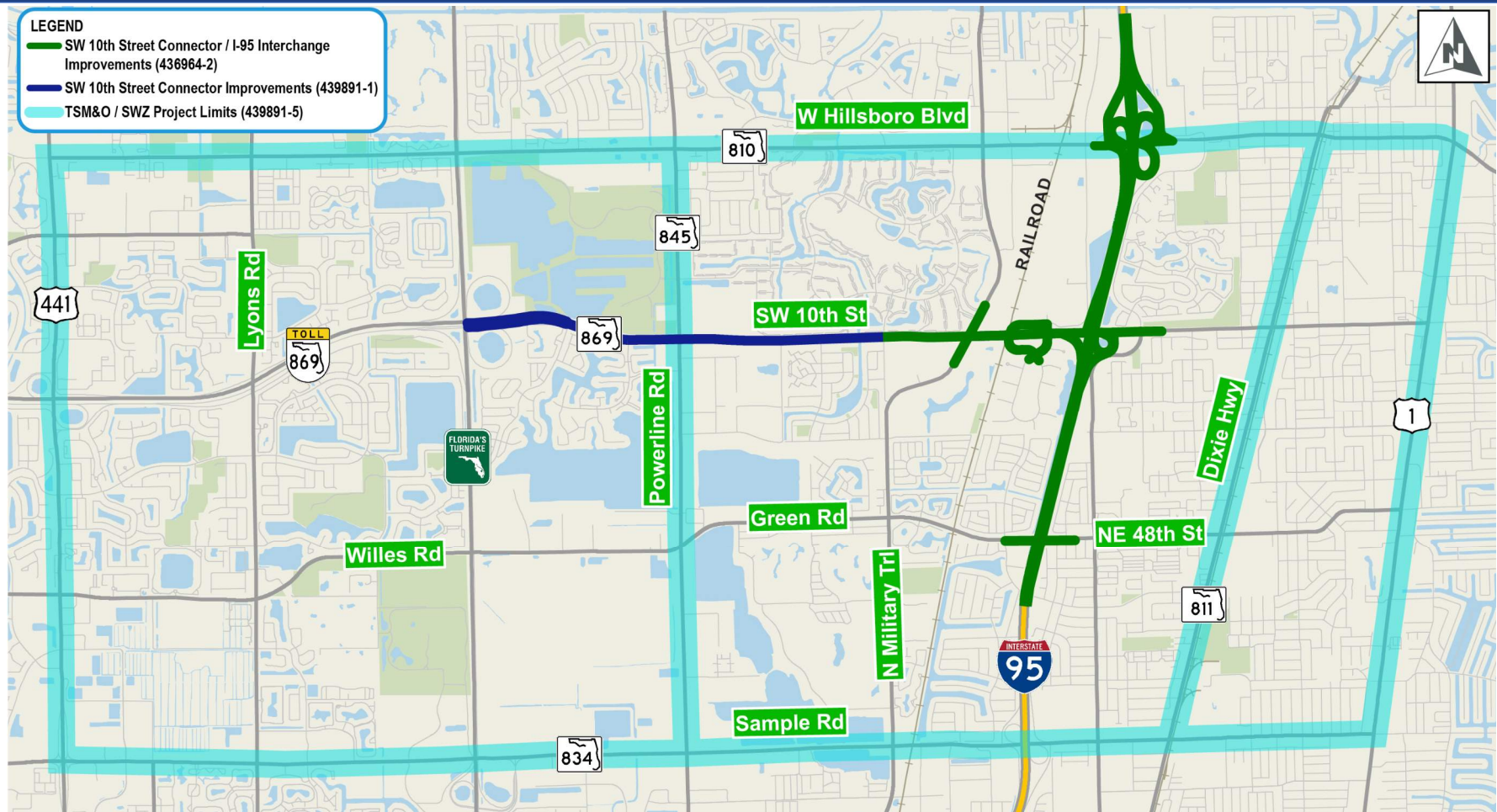
- Improve Connectivity of Strategic Intermodal System (SIS) and Limited Access Facilities (SR 869/Sawgrass Exp. with I-95)
- Address Local SW 10<sup>th</sup> Street Mobility Needs
- Enhance Social Demand, Intermodal and Economic Development
- Address Safety and Operational Issues Caused by Congestion
- Enhance Emergency Response Times and Evacuation Operations



# SW 10th St Connector – Overall Program Summary



# SW 10th St Connector – Overall Program Summary



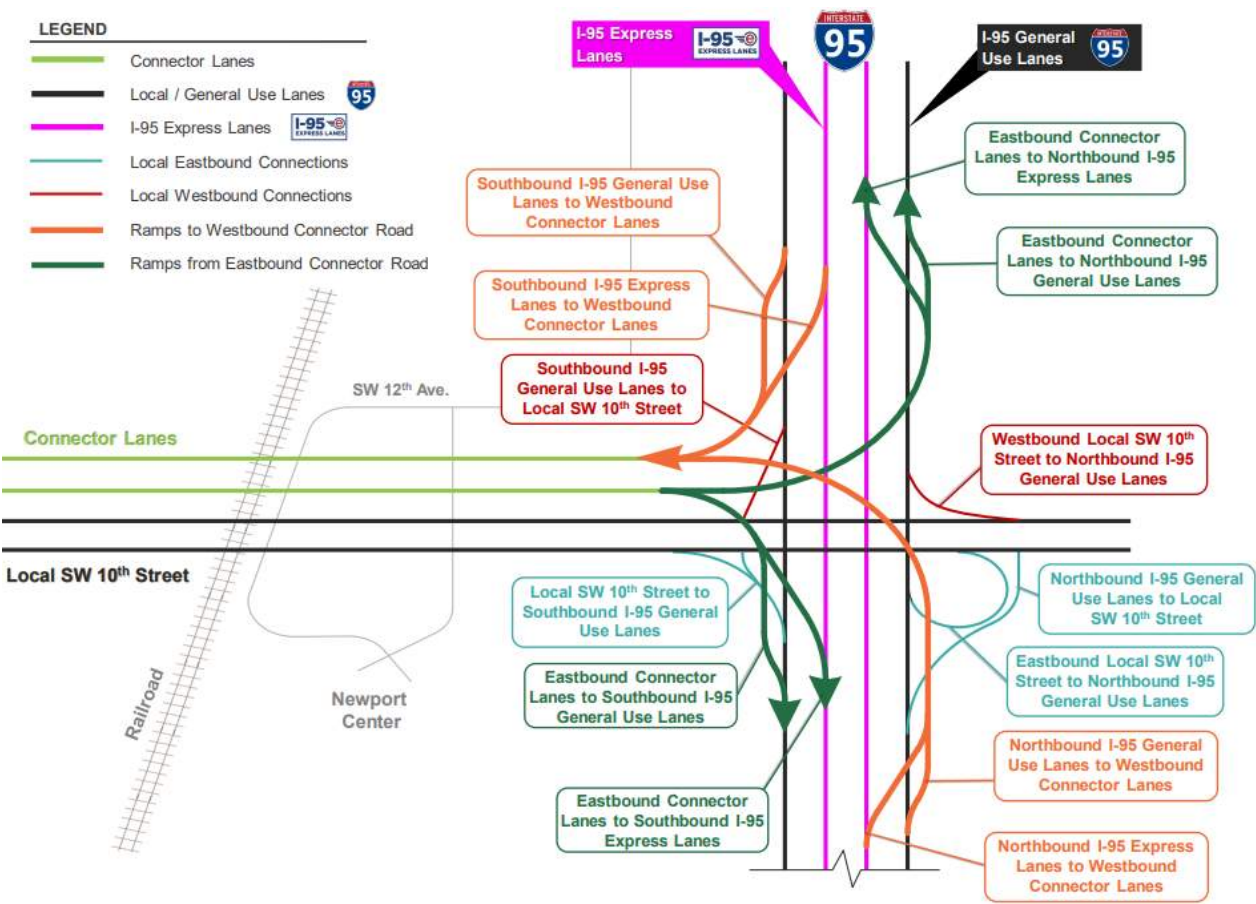


# SW 10th St Connector – Overall Program Summary



# Summary of Planned Improvements (436964-2)

- Roadway
- Drainage
- Structures
  - Bridges
  - Retaining Walls
  - Noise Walls
- ITS
- Utility Reconstruction Master Plan
- ROW Requirements





# SW 10<sup>th</sup> St Connector/I-95 Interchange – Looking South





# SW 10<sup>th</sup> St Connector/I-95 Interchange – Looking East





# SW 10<sup>th</sup> St Connector/I-95 Interchange – Looking North



# Roadway

- New four lane limited access SW 10<sup>th</sup> Street Connector lanes between Sawgrass Expressway and I-95
- Reconstructed local SW 10<sup>th</sup> Street with access accommodation for all existing properties and cross-streets
- Addition of second Northbound and Southbound 95 Express Lane between north of Sample Road and north of Hillsboro Boulevard
- Miscellaneous local roadway improvements to Military Trail, Newport Center Drive, and SW 12<sup>th</sup> Avenue

# Roadway

1

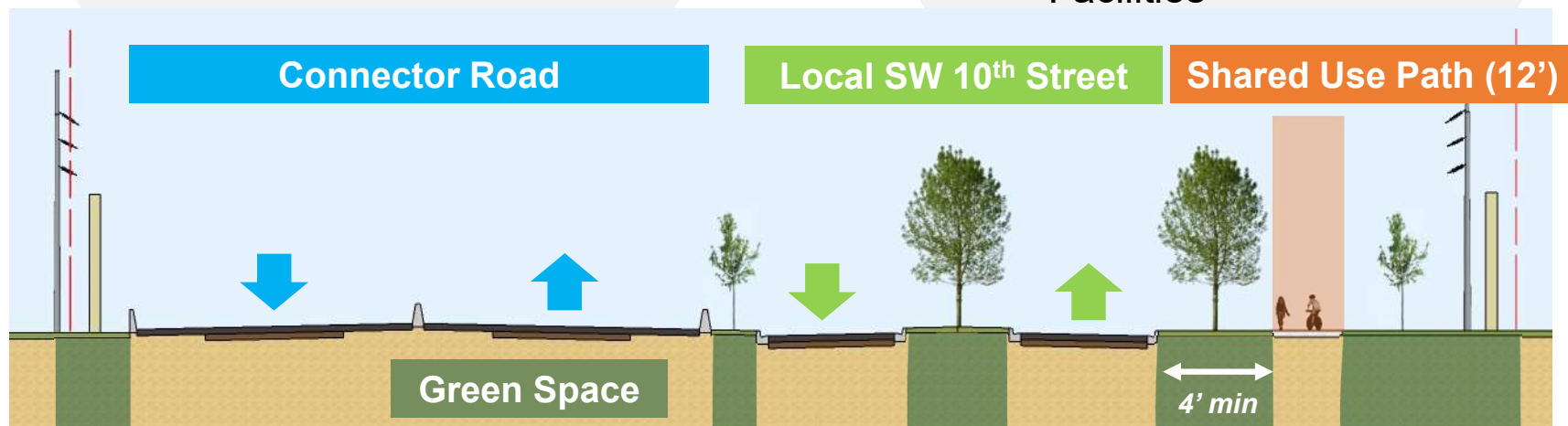
## Connector Road

- Regional Connection
- Higher Speed
  - (60 mph)
- Limited Access (No Tolls)
- Trucks Allowed

2

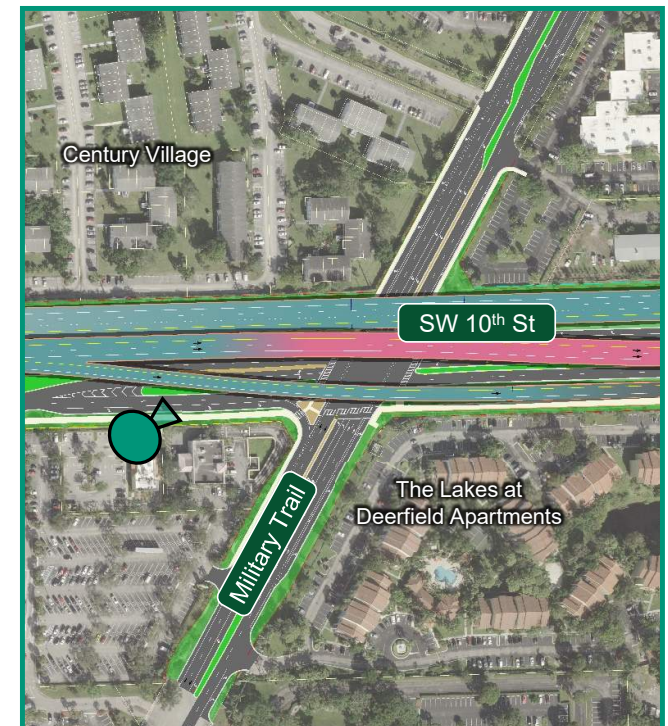
## Local Roadway

- Access for Businesses and Communities
- Lower Speed
  - (35 mph)
- Bicycle and Pedestrian Facilities





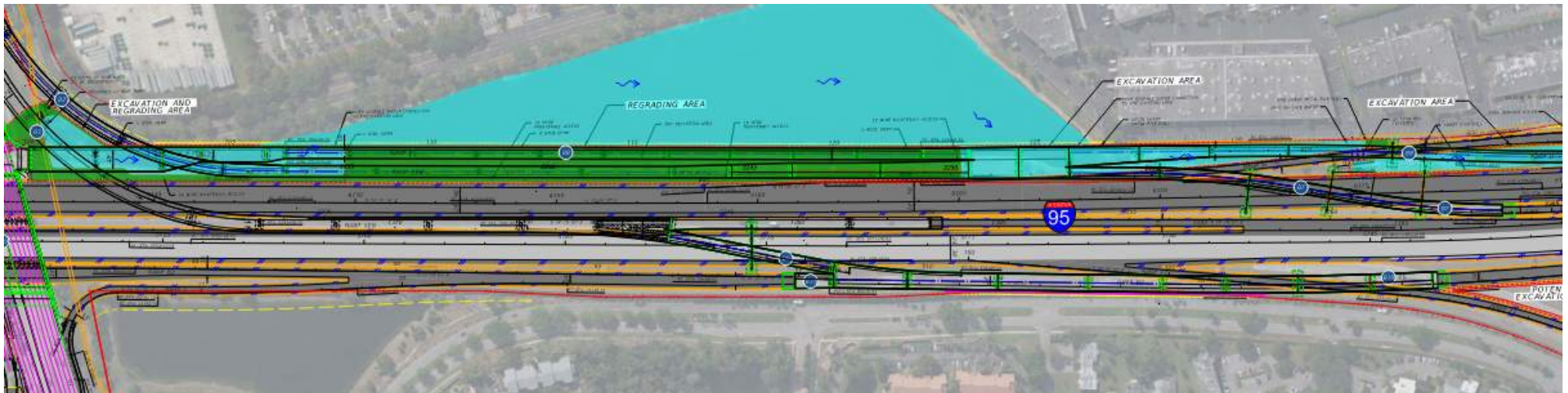
# Roadway





# Drainage

- Stormwater Management Facilities
  - Linear Dry Ponds (swales)
  - Dry and / or Wet Detention / Retention ponds
  - New or Modified Control Structures and Outfalls
  - Accommodate Landscape Opportunity Areas for Post-Construction Stand-Alone Landscape Project(s)

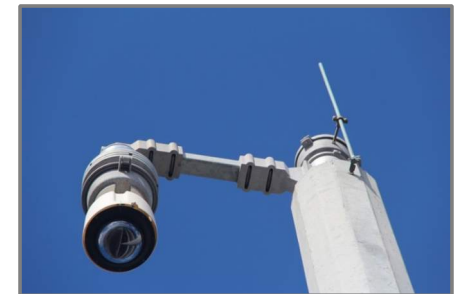
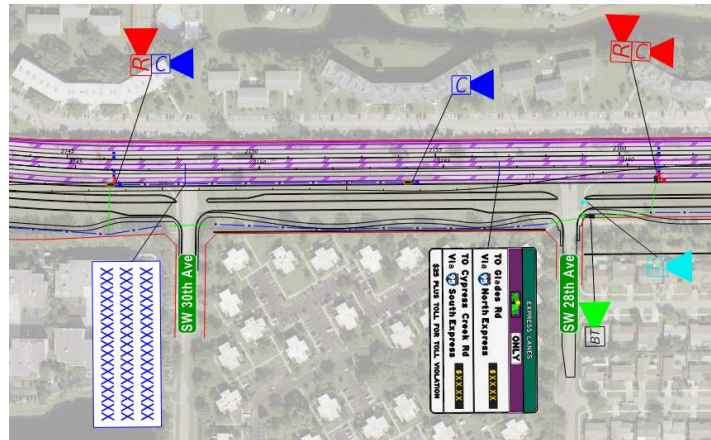


# Structures

- New Bridges
  - 15 Steel (approximately 25,000 lineal ft., 925,000 sq. ft.)
  - 2 Concrete Girder
- Bridge Replacements
  - 2 Steel (SW 10<sup>th</sup> St over SFRC)
  - 5 Concrete Girder
- Retaining Walls (approximately 325,000 sq. ft.)
- Noise Walls (Ground Mounted and Shoulder Mounted)
- Extensive OH Sign and ITS Structures

# ITS

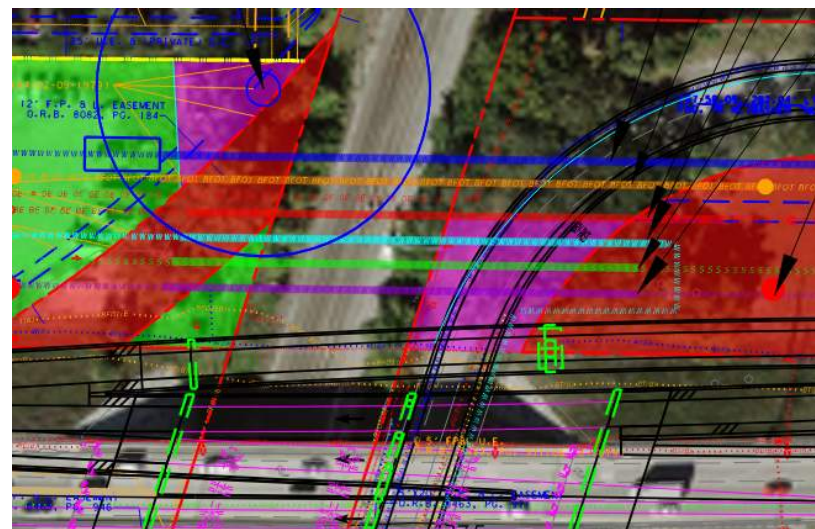
- ITS Maintenance of Communications (MOC) Plan
- Maintain and Upgrade Existing ITS Devices Throughout I-95 and SW 10th Street Connector Project Limits
- DMS Subsystem, Including Toll Amount and Lane Status DMS
- CCTV Camera Subsystem
- MVDS Subsystem
- Power Distribution Subsystem



# Utility Reconstruction Master Plan

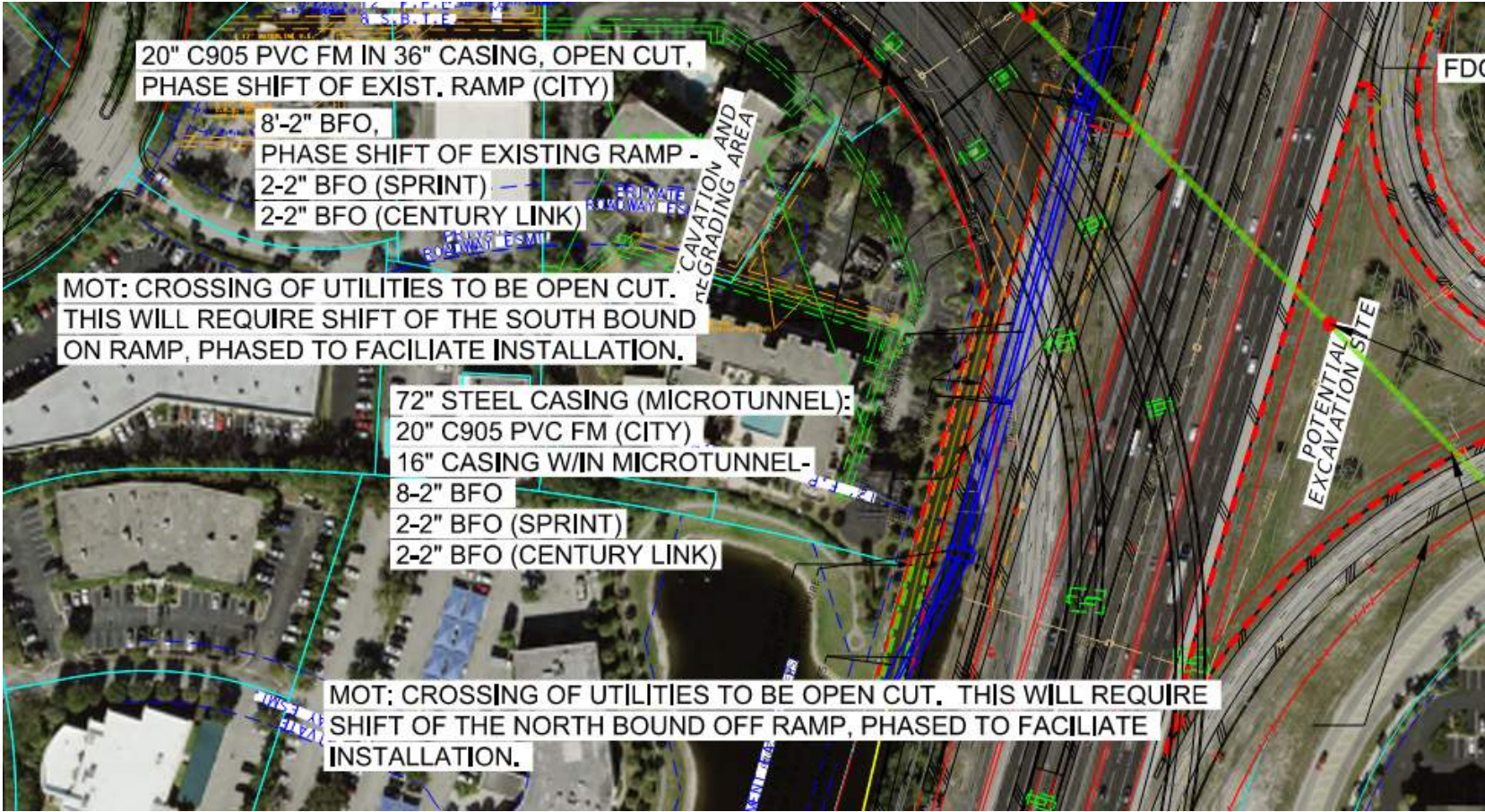
- City and County Wet Utilities
  - Reconstruct Force Mains (8,025 LF, up to 24")
  - Reconstruct Water Mains (7,130 LF, up to 48")
  - New Reclaimed Water (8,025 LF 12")
- Fiber Communications (AT&T, others)
- FPL Distribution
- Trenchless Utility Casing Construction
  - Railroad
    - 6 separate installations each approximately 300 ft. in length
  - I-95
    - 2 separate installations, one approximately 750 ft. and another approximately 400 ft. in length

- Detailed Draft Utility Master Plan at [www.sw10street.com](http://www.sw10street.com)



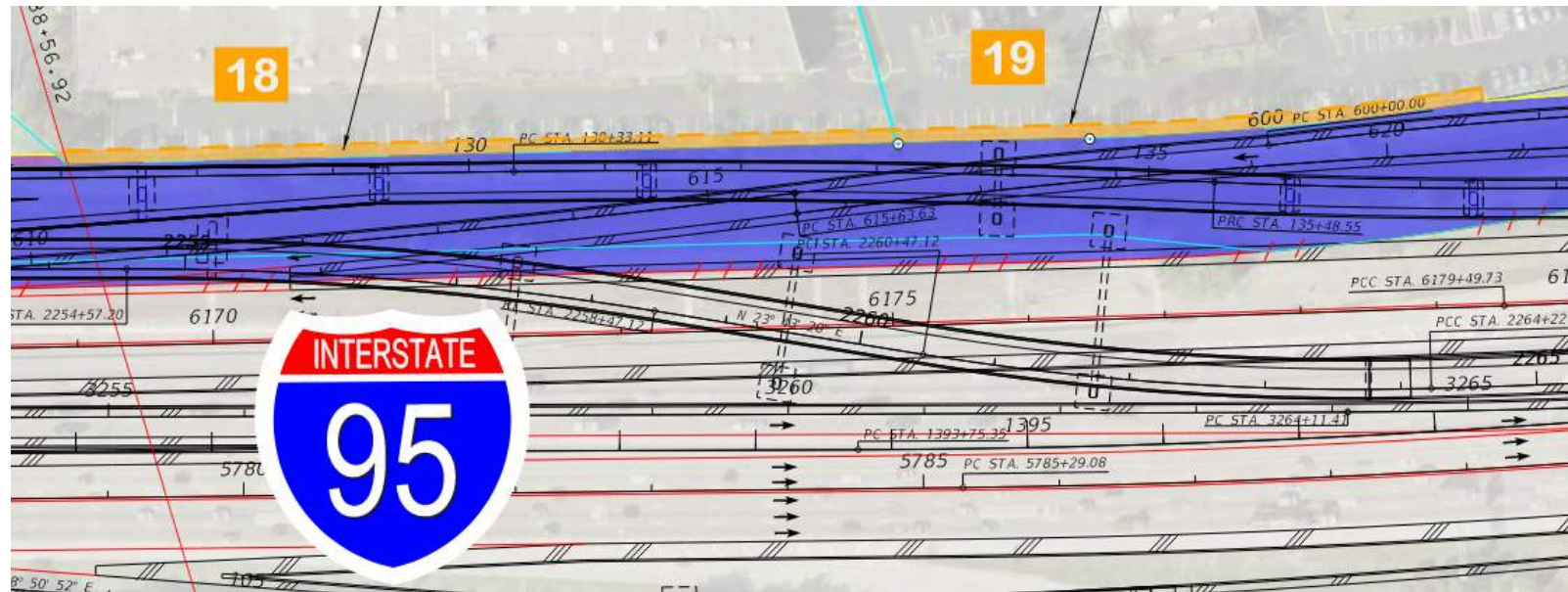


# Utility Reconstruction Master Plan



## Right of Way Requirements (436964-2 and 439891-1)

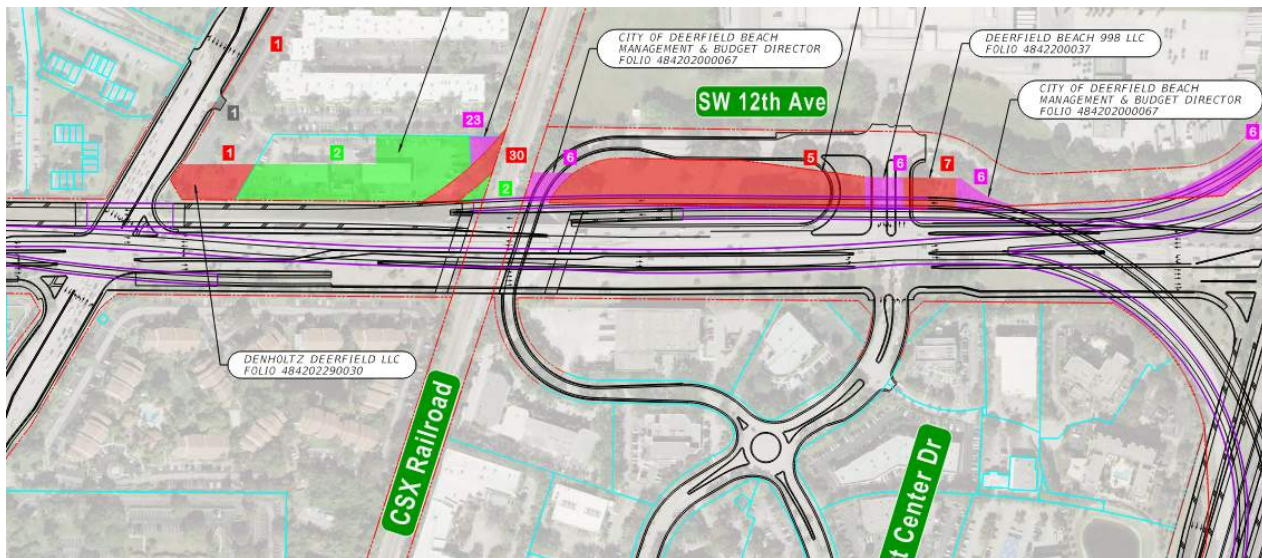
- Department Intent to Avoid / Minimize Construction Activities Outside the Existing Right of Way
    - 26 Permanent parcel impacts
    - 20 Temporary Construction Easements
  - AF4 Quadrant LLC, TCE's
- 
- An aerial photograph of a landscape with two orange boxes labeled '18' and '19'. Box 18 is on the left, and box 19 is on the right. The image shows a mix of green fields and some buildings. There are some faint lines and text on the map, including '38.56.92' near box 18 and '19' near box 19.



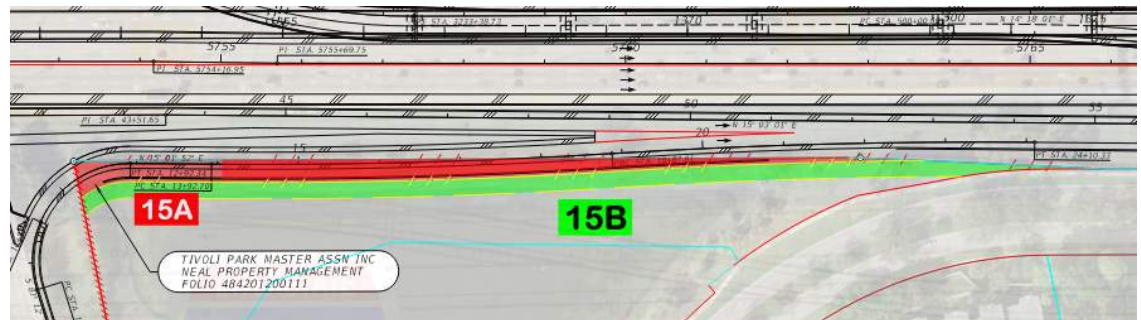


# Right of Way Requirements (436964-2)

- Utility Relocation Corridor



- Tivoli Park Stormwater Pond Encroachment



# Project Risk Sharing Strategies Summary

## **Risk Sharing Strategies to evaluate and develop**

- ATC Draft Submittals
- High-Risk Item Contingency Fund
- Scope Validation Phase
- Utility Coordination – District Utility Facilitator
- Utility Coordination – Review / Inspection Schedules
- Reference Documents
- Project Schedule and Municipal Partners
- Standard of Care
- Team Member Dispute Resolution Process



# Next Steps for Project Implementation

- SW 10<sup>th</sup> Street TSM&O Industry Forum
  - January 2022
- SW 10<sup>th</sup> Street Connector Industry Forum
  - May 2022
- TSM&O (439891-5)
  - Advertisement May 2022
  - Letting January 2023
- SW 10<sup>th</sup> St. Connector/I-95 Interchange (436964-2)
  - Advertisement August 2022
  - Letting July 2023
- SW 10<sup>th</sup> St Connector (west of SW 24<sup>th</sup> Ave) (439891-1)
  - Advertisement August 2023
  - Letting July 2024



---

**Vanita Saini, P.E.**  
*FDOT Project Manager*

Florida Department of Transportation, District Four  
3400 West Commercial Boulevard  
Ft. Lauderdale, Florida 33309

Phone: (954) 777-4468  
Toll Free: (866) 336-8435, ext. 4468

Email: [Vanita.Saini@dot.state.fl.us](mailto:Vanita.Saini@dot.state.fl.us)  
Project Website: [www.SW10Street.com](http://www.SW10Street.com)



# Questions