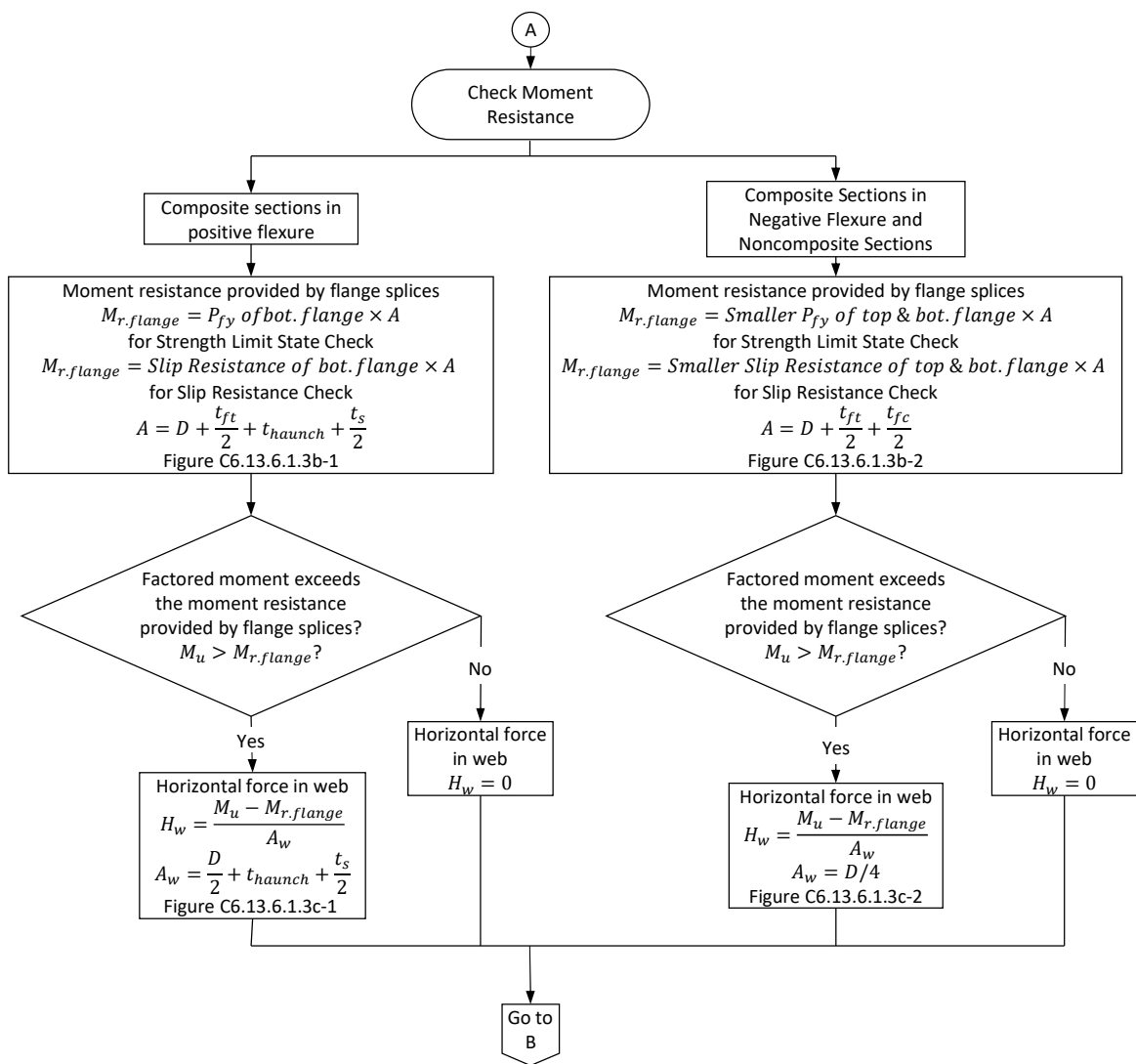
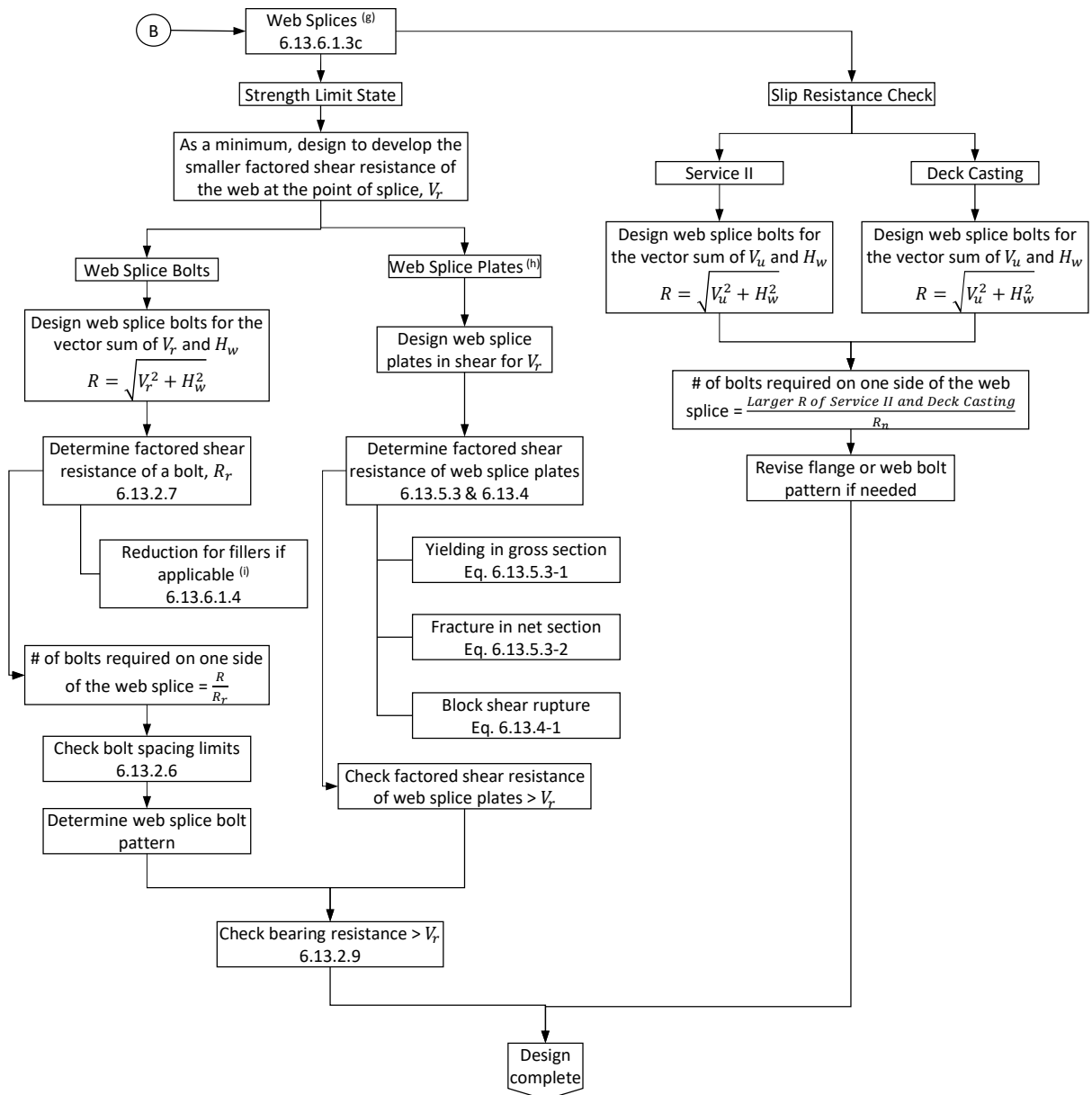


<sup>(a)</sup> Note: In continuous spans, splices should be made at or near points of dead load contraflexure.  
<sup>(b)</sup> Note: Web and flange splices in areas of stress reversal shall be investigated for both positive and negative flexure.  
<sup>(c)</sup> Note: In both web and flange splices, there shall not be less than two rows of bolts on each side of the joint.  
<sup>(d)</sup> Note: Oversize or slotted holes shall not be used in either the member or the splice plates at bolted splices.  
<sup>(e)</sup> Note: The areas of the flange and web splice plates shall equal or exceed the area of the flange and web to which they are attached. Otherwise, fatigue of the base metal adjacent to the slip-critical connections must be checked as specified in Table 6.6.1.2.3-1.  
<sup>(f)</sup> Note: The areas of inner and outer flange plates do not differ by more than 10%. Otherwise, see C6.13.6.1.3b.





(g) Note: Webs shall be spliced symmetrically by plates on each side.  
 (h) Note: The splice plates shall extend as near as practical for the full depth between flanges without impinging on bolt assembly clearances.  
 (i) Note: For bolted web splices with thickness differences of 0.0625 in. or less, filler plates should not be provided.