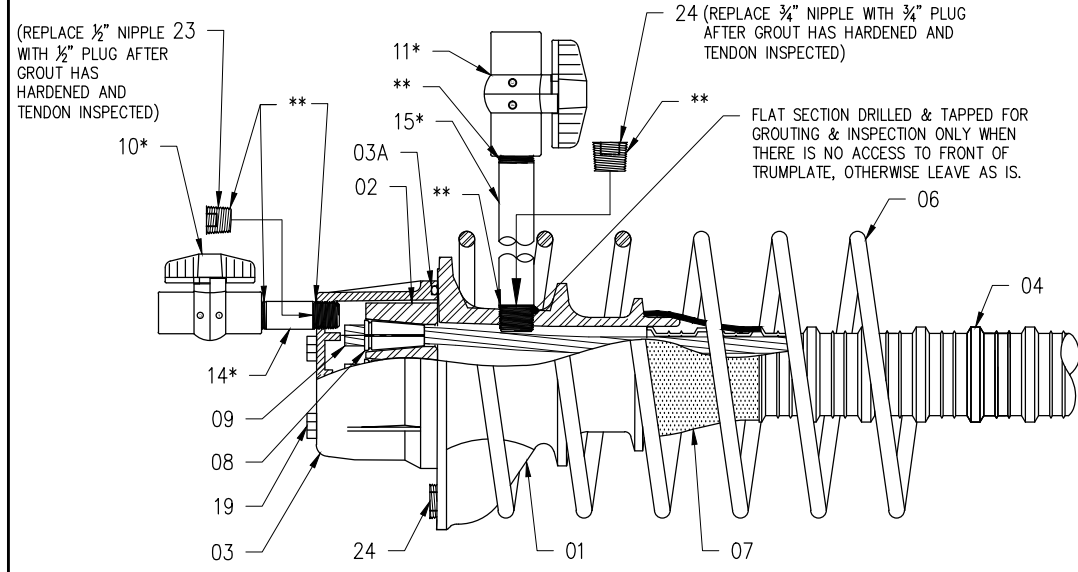


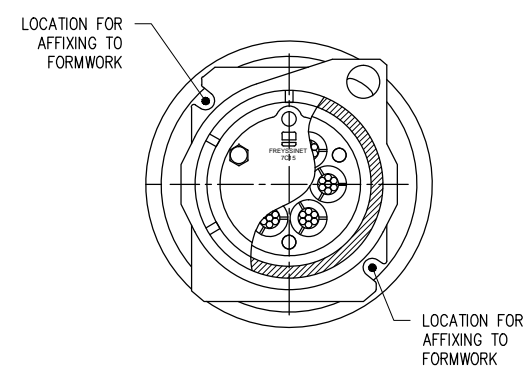
NOTE: HOLES THAT ARE LEFT AFTER REMOVAL OF TEMPORARY FITTINGS, TO BE FILLED WITH NON-SHRINK GROUT.

\*\* APPLY TEFLON TAPE OR THREAD SEAL PASTE AT ALL PORT/VALVE AND PLUG CONNECTIONS AS NEEDED.

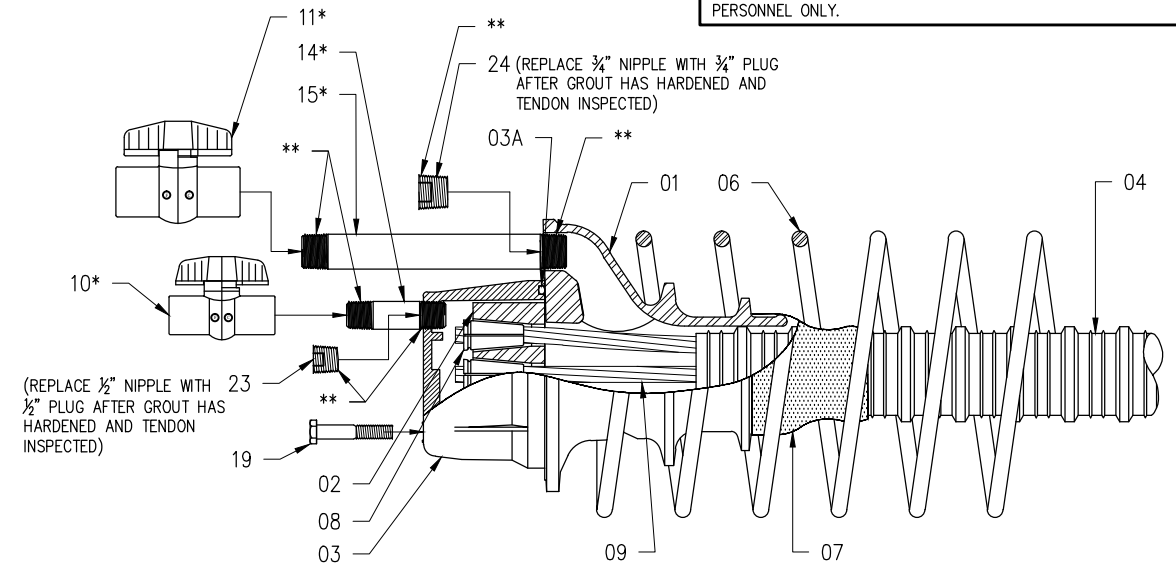
CAUTION: ASSEMBLY OF ANCHORAGE AND INSTALLATION OF TENDONS SHALL BE PERFORMED BY QUALIFIED POST-TENSIONING PERSONNEL ONLY.



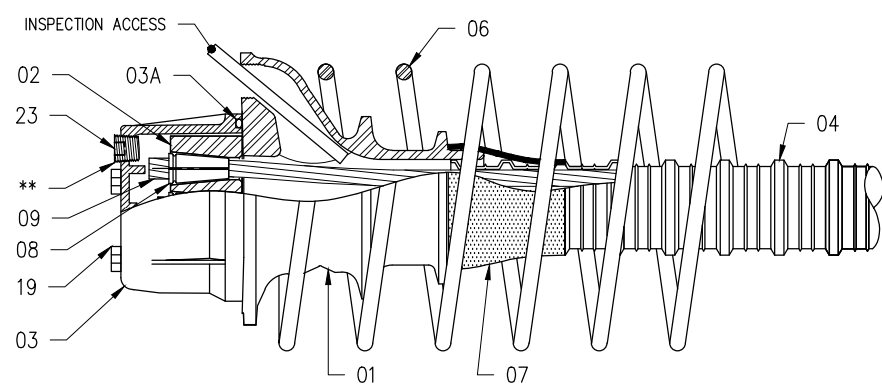
**7C15 ASSEMBLY PARTIAL SECTION**  
GROUTING & INSPECTION FROM TOP



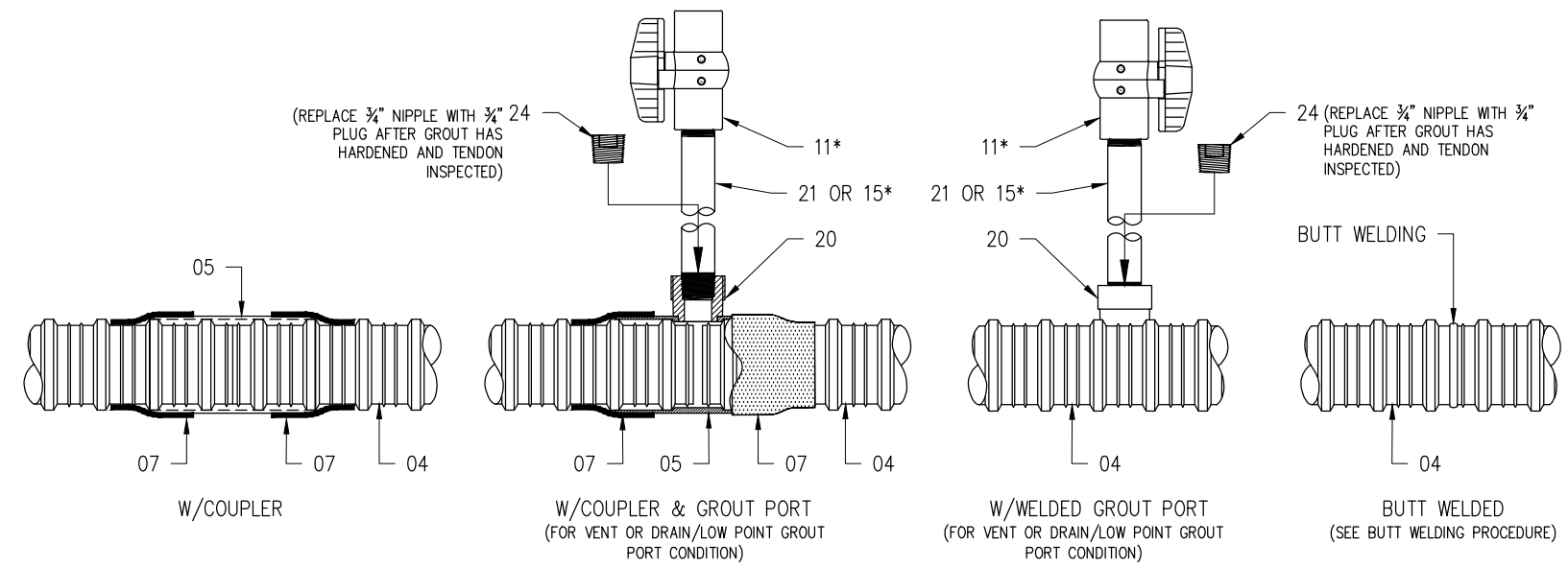
**END VIEW**



**7C15 ASSEMBLY PARTIAL SECTION**  
GROUT INLET/OUTLET



**7C15 ASSEMBLY PARTIAL SECTION**  
GROUT INSPECTION



**INTERMEDIATE CONNECTION DETAILS**  
SEE INSTALLATION PROCEDURE

- NOTE:
- COMPONENTS MARKED WITH "\*" ON THE DRAWING ARE TEMPORARY.
  - PORT AND HOSE ASSEMBLY MAY BE ORIENTED IN ANY REQUIRED DIRECTION TO CREATE A VENT OR A DRAIN.
  - EPOXY GROUT SHALL BE USED TO FILL RECESSSES: REFER TO FDOT STANDARD SPECIFICATIONS AND STANDARD INDEX 462-003.
  - CONCRETE COVER MUST MEET FDOT STRUCTURES DESIGN GUIDELINES.

7C15 ASSEMBLY COMPONENTS				
ITEM	DESCRIPTION	MATERIAL	PART # / LABEL	DRAWING
01	7C15 ANCHORAGE (TRUMPLATE)	ASTM A48, 35B GALV. ASTM A123	TP7C15G	FINC-7C15-02
02	7C15 ANCHOR BLOCK (WEDGE PLATE)	STEEL, 4140 HR	AB7C15	FINC-7C15-03
03	7C15 GROUT CAP	NYLON ASTM D5989	CAP7C15	FINC-7C15-04
03A	7C15 ANCHORAGE CAP O-RING	HNBR 70, AS PER TABLE 2.2.1.7-1 OF FDOT 960 SPECS	ORNG025X484	FINC-7C15-04
04	7C15 59mm GTI DUCT	POLYPROPYLENE ASTM D4101	PPD59ID	FINC-7C15-05
05	7C15 59mm GTI SLIP-ON COUPLER W/ OR W/O VENT	POLYPROPYLENE ASTM D4101	PCOUP59ID	FINC-7C15-06
06	7C15 SPIRAL REINFORCEMENT	STEEL, GR. 60ksi, ASTM A615	SP1R7C15	FINC-7C15-07
07	7C15 HEAT SHRINK SLEEVE (PLA-63-YE)	POLYOLEFIN BACKING W/ ADHESIVE	PLA63X90	FINC-7C15-08
08	C15 ANCHOR WEDGE	STEEL, 12L14 ASTM A240	WEDGE	FINC-7C15-09
09	0.6" DIA. STRAND	STEEL, LOW RELAX. GR 270 STRAND PER ASTM A416	STRAND	FINC-7C15-10
10*	1/2" NPT BALL VALVE	SCH. 80 PVC, ASTM 2467 (150 PSI RATED)	GBV12	FINC-7C15-11
11*	3/4" NPT BALL VALVE	SCH. 80 PVC, ASTM 2467 (150 PSI RATED)	GBV34	FINC-7C15-12
14*	1/2" NPT PIPE NIPPLE	SCH. 80 PVC OR SCH. 40 STEEL (150 PSI RATED)	GNP12	FINC-7C15-13
15*	3/4" NPT PIPE NIPPLE	SCH. 80 PVC OR SCH. 40 STEEL (150 PSI RATED)	GNP34	FINC-7C15-14
19	3/8"-16 HEX BOLT (2" LONG)	316 STAINLESS STEEL ASTM F593	BL38X200	FINC-7C15-15
20	3/4" NPT WELDABLE PORT	POLYPROPYLENE ASTM D4101	34NPTPORT	FINC-7C15-16
21	3/4" NPT PE TUBE	HIGH-DENSITY POLYETHYLENE PER ASTM D3350	RGCLP34X100	FINC-7C15-17
23	1/2" NPT PLUG	NYLON ASTM D5989	GPLG12	FINC-7C15-18
24	3/4" NPT PLUG	NYLON ASTM D5989	GPLG34	FINC-7C15-19

- 7C15 INSTALLATION PROCEDURE:**
- NOTE: INSTALLATION PROCEDURE IS GENERIC. FOLLOW SPECIFIC PROJECT REQUIREMENTS & FDOT SPECIFICATIONS.
- LAYOUT EACH TENDON ANCHORAGE AND DUCT LOCATION ACCORDING TO THE SPACING SHOWN ON THE TENDON LAYOUT PLANS.
  - BOLT THE ANCHORAGE TRUMPLATE SECURELY AND PERPENDICULAR TO THE BLOCK-OUT FORM.
  - INDIVIDUAL DUCT LENGTHS SHALL BE COUPLED TOGETHER TO OBTAIN THE CORRECT LENGTH FROM ANCHORAGE TO ANCHORAGE. INSTALL COUPLERS & WELDED GROUT PORTS AS SHOWN ON THESE DRAWINGS AND THE APPLICABLE CONTRACT PLANS.
  - USE HEAT SHRINK SLEEVES TO SEAL DUCT TO DUCT AND DUCT TO TRUMPLATE CONNECTIONS FOLLOWING THE MANUFACTURER'S RECOMMENDED PROCEDURE. CARE MUST BE TAKEN TO AVOID BURNS ON THE DUCT.
  - PLACE ALL REINFORCING STEEL AS SHOWN ON THESE DRAWINGS.
  - PROCEED WITH CONCRETING, TAKING CARE TO NOT DAMAGE OR DISPLACE THE DUCT.
  - PLACE THE CORRECT QUANTITY OF STRAND IN EACH DUCT LEAVING MINIMUM STRESSING TAILS AT EACH END FOR STRESSING EQUIPMENT. THIS CAN BE ACCOMPLISHED BY PUSHING OR PULLING THE STRAND THROUGH THE DUCT.
  - INSTALL THE ANCHOR BLOCK AT EACH END OF THE TRUMPLATE. INSERT THE WEDGES INTO THE ANCHOR BLOCK. MAKE SURE WEDGE CAVITIES ARE CLEAN & FREE OF RUST.
  - PER FDOT SPECIFICATION 462-8.2.1.1, AN AIR PRESSURE TEST IS REQUIRED PRIOR TO CONCRETE PLACEMENT.
  - STRESSING MAY PROCEED ONCE THE CONCRETE HAS REACHED THE REQUIRED COMPRESSIVE STRENGTH AS INDICATED IN THE PLANS AND AS CONFIRMED BY TESTS.

- ALL TENDONS SHALL BE STRESSED BY JACKING FROM ONE OR TWO ENDS IN THE APPROVED SEQUENCE. ONCE APPROVED, CUT STRAND TAILS TO 1.5" MAXIMUM LENGTH.
  - INSTALL GROUT CAPS, INLET AND OUTLET ACCESSORIES.
  - PERFORM DUCT PRESSURE FIELD TEST REQUIRED BY FDOT SPECIFICATIONS.
  - GROUTING SHALL BE PERFORMED IN ACCORDANCE WITH THE LATEST EDITION OF THE PTI GUIDE SPECIFICATIONS FOR GROUTING OF POST TENSIONING STRUCTURES OR APPLICABLE SPECIFICATION.
- VENDOR-SPECIFIC INSTALLATION PROCEDURE FOR WELDING PORT (ITEM #20) TO DUCT:**
- MARK GTI DUCT & DRILL 3/8" (22mm) HOLE IN THE GTI DUCT AND CLEAN HOLE AND GTI WELDED GROUT PORT. WELDED GROUT PORT HOLE REQUIRED TO BE BETWEEN RIBS OF DUCT.
- FOLLOW MANUFACTURER'S REQUIREMENTS FOR PREPARATION OF THE PORT WELDER.
- SIMULTANEOUSLY, INSERT MALE ADAPTER OF GTI GROUT PORT WELDER INTO DRILLED HOLE IN DUCT AND PLACE GTI WELDED GROUT PORT INTO FEMALE ADAPTER.
- APPLY LIGHT PRESSURE FOR 20-25 SECONDS BY PUSHING THE GTI WELDED GROUT PORT WITH THE PALM OF HAND.
- REMOVE THE PORT WELDER FROM THE DRILLED HOLE AND WITHIN 5 SECONDS, INSERT THE WELDED GROUT PORT UNTIL SHOULDER IS REACHED.
- ALLOW THE GTI DUCT AND GTI WELDED GROUT PORT TO COOL FOR A MINIMUM OF 4 MINUTES.
- AFTER THE COOLING TIME HAS FINISHED, THE ASSEMBLY CAN BE USED AS REQUIRED.

MEMBERS OF:

These drawings contain proprietary information restricted solely to this project and may not be reproduced in whole or part without the written expressed permission of FREYSSINET, INC.

REVISIONS:

REV.	DATE	BY	DESCRIPTION
1	02-24-20	JM	TC/SN
0	11-26-19	JM	TC/SN

SCALE: DIMENSIONS IN INCHES. DO NOT SCALE THIS DRAWING.

DRAWING TITLE: FREYSSINET 7C15 INTERNAL BONDED PT SYSTEM W/59mm ROUND CORRUGATED DUCT ASSEMBLY

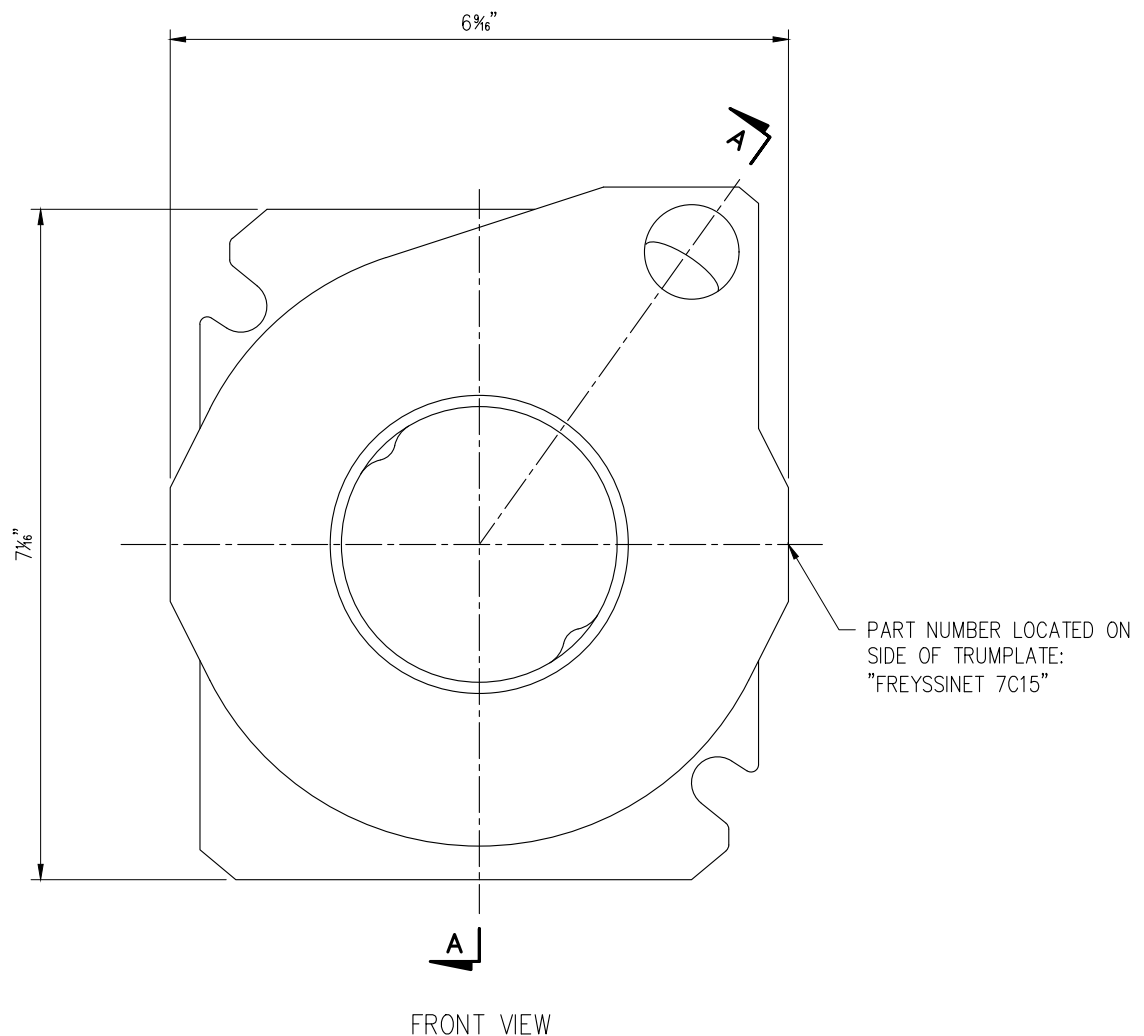
SHEET NO.: 1

REV: 1

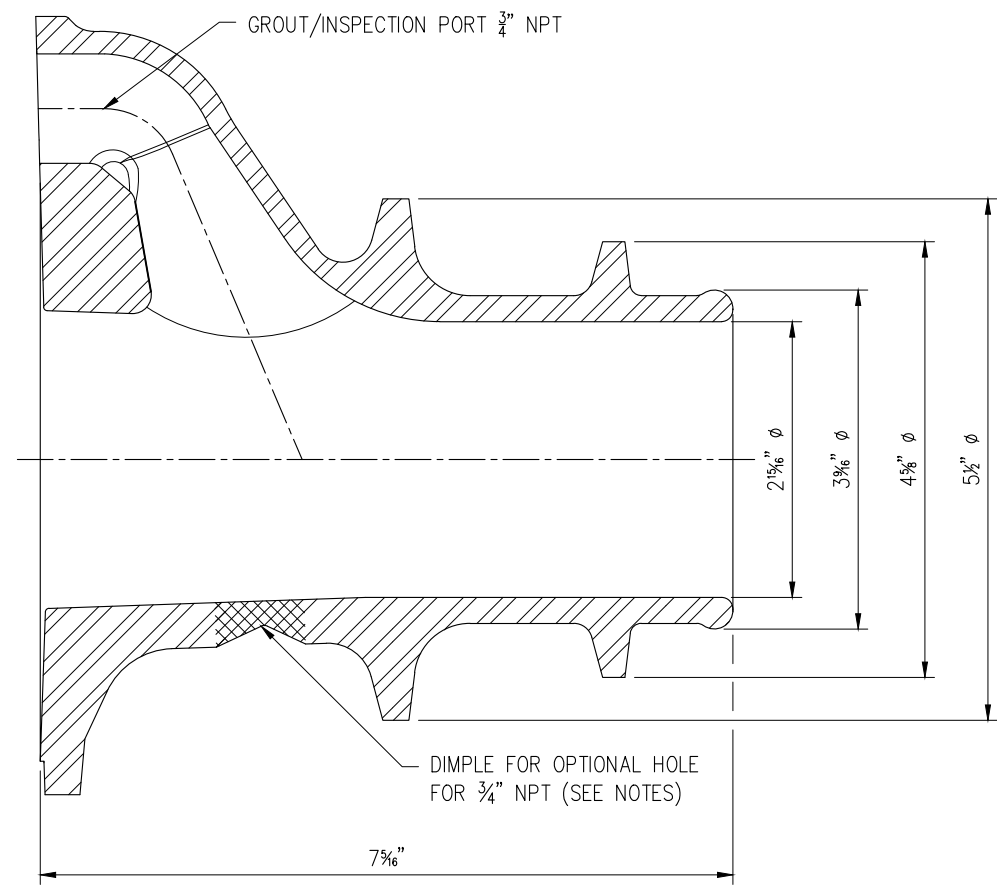
FINC-7C15-01

FOOT SPECIFICATION 960 REVIEW COMMENTS ORIGINAL

CHECKED APPROVED REVISION DESCRIPTION



FRONT VIEW



SECTION A-A

ITEM	DESCRIPTION	MATERIAL	PART # / LABEL
01	7C15 ANCHORAGE (TRUMPLATE)	ASTM A48, 35B GALV. ASTM A123	TP7C15G

- NOTES:
- FLAT SECTION DRILLED & TAPPED FOR GROUTING & INSPECTION ONLY WHEN THERE IS NO ACCESS TO FRONT OF TRUMPLATE. OTHERWISE LEAVE AS IS. DRILLING & TAPPING SHALL BE COMPLETED PRIOR TO SHIPMENT TO PROJECT.

REVISIONS:

REV.	DATE	BY	DESCRIPTION
1	02-24-20	JM	TC/SN
0	11-26-19	JM	TC/SN

MEMBERS OF:

**FREYSSINET, INC**  
SUSTAINABLE TECHNOLOGY  
PHONE: 703-378-2500  
WWW.FREYSSINETUSA.COM  
COPYRIGHT & MODIFICATION RESERVED

These drawings contain proprietary information restricted solely to this project and may not be reproduced in whole or part without the written expressed permission of FREYSSINET, INC

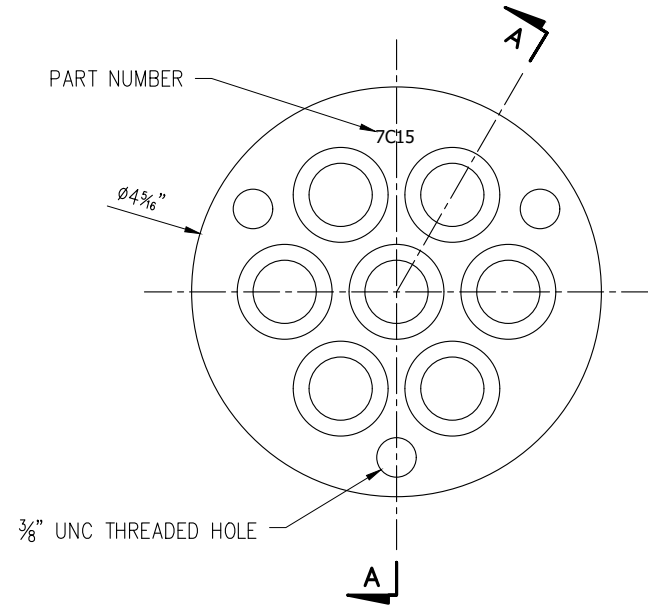
DRAWING TITLE: **FREYSSINET 7C15 ANCHORAGE (TRUMPLATE)**

SCALE: **DIMENSIONS IN INCHES. DO NOT SCALE THIS DRAWING.**

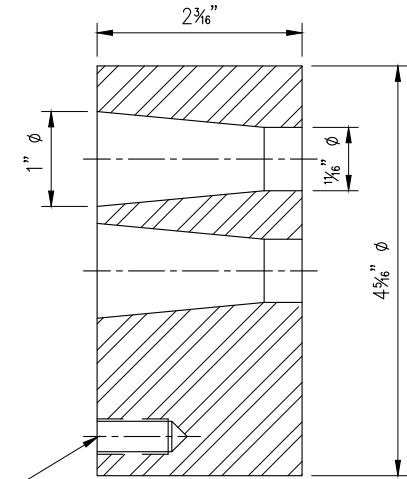
SHEET NO.: **1**

REV. **1**

FINC-7C15-02



FRONT VIEW



SECTION A-A

ITEM	DESCRIPTION	MATERIAL	PART # / LABEL
02	7C15 ANCHOR BLOCK (WEDGE PLATE)	STEEL, 4140 HR	AB7C15

REVISIONS:

REV.	DATE	BY	CHKD	APP'D	DESCRIPTION
0	11-26-19	JM	TC/SN	SN	ORIGINAL

MEMBERS OF:



**FREYSSINET**  
SUSTAINABLE TECHNOLOGY

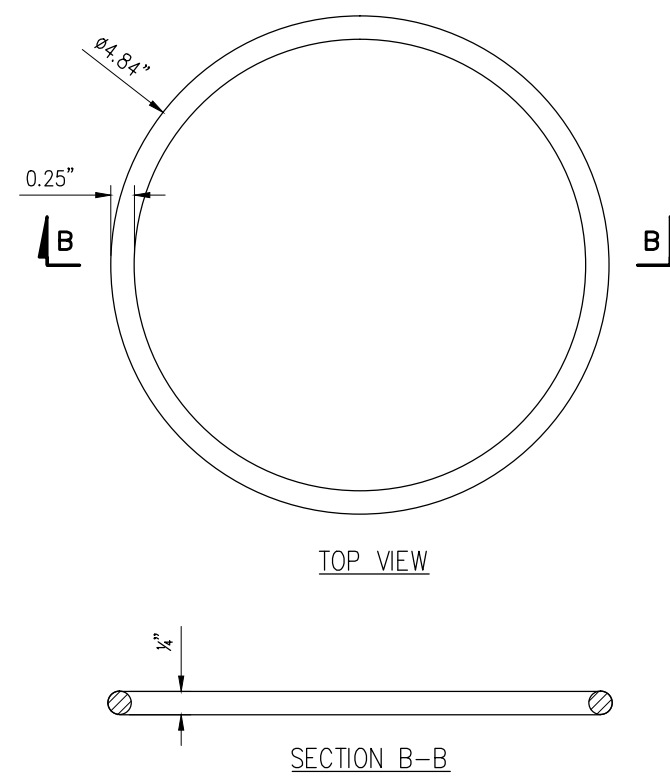
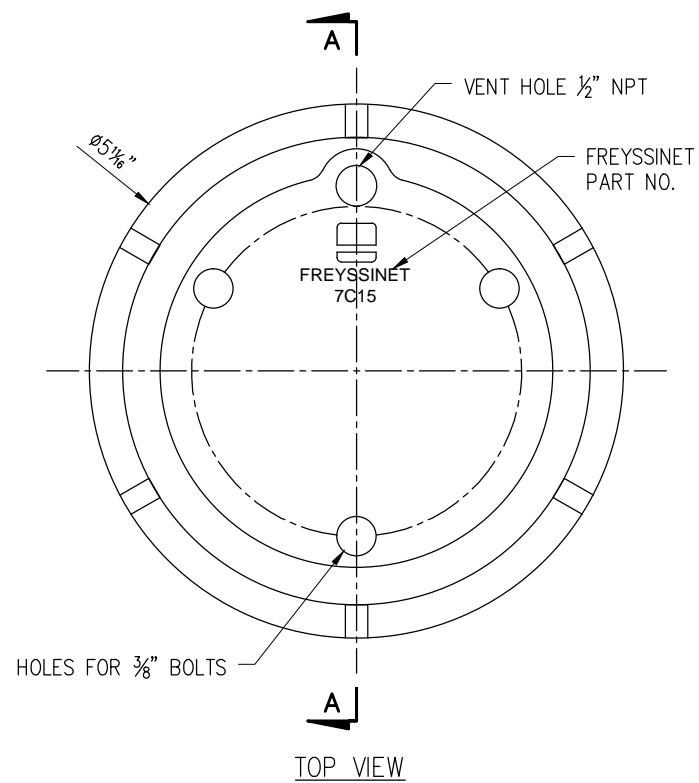
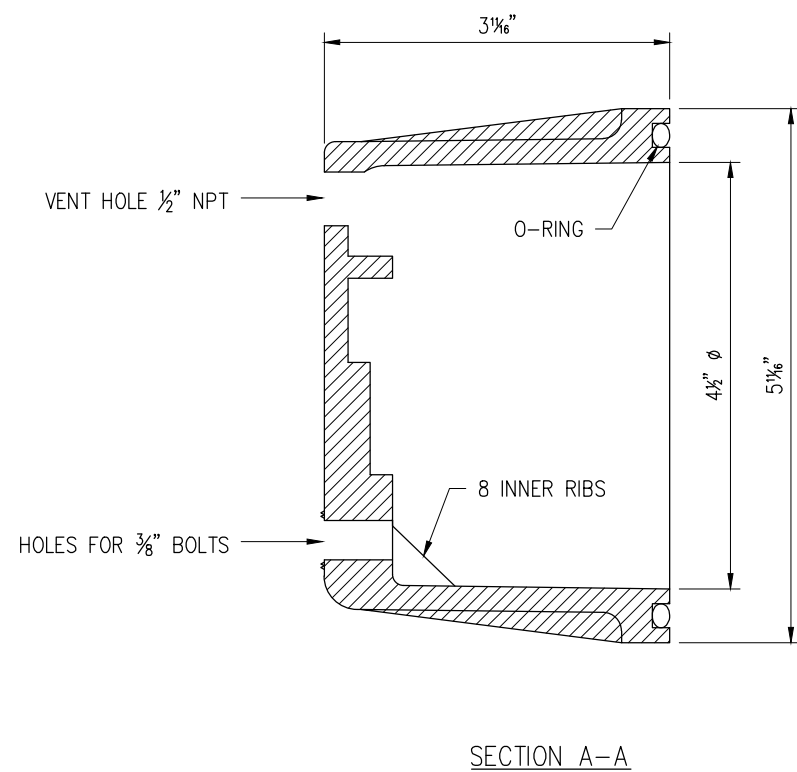
**FREYSSINET, INC**  
PHONE: 703-378-2500  
WWW.FREYSSINETUSA.COM  
COPYRIGHT & MODIFICATION RESERVED

These drawings contain proprietary information restricted solely to this project and may not be reproduced in whole or part without the written expressed permission of FREYSSINET, INC

DRAWING TITLE:  
FREYSSINET 7C15 ANCHOR BLOCK (WEDGE PLATE)

SCALE: DIMENSIONS IN INCHES. DO NOT SCALE THIS DRAWING.

REV: 0 SHEET NO.: 0 FINC-7C15-03



**GROUT CAP**

**O-RING**

ITEM	DESCRIPTION	MATERIAL	PART # / LABEL
03	7C15 GROUT CAP	NYLON ASTM D5989	CAP7C15
03A	7C15 ANCHORAGE CAP O-RING	HNBR 70, AS PER TABLE 2.2.1.7-1 OF FDOT 960 SPECS	ORNG025X484

- NOTE:
- USE O-RING IN GROOVE FOR SEALING AGAINST TRUMPLATE (DWG. FINC-7C15-01)
  - USE 3/8" S.S. BOLT ASTM F593
  - PRESSURE RATING = 150 psi
  - GROUT CAP & O-RING MEET OR EXCEEDS FDOT STANDARD SPECIFICATIONS, SECTION 960

REVISIONS:

REV.	DATE	DRWN	CHECKED	APPROVED	REVISION DESCRIPTION
0	11-26-19	JM		SN	ORIGINAL

MEMBERS OF:

**FREYSSINET**  
SUSTAINABLE TECHNOLOGY  
FREYSSINET, INC.  
PHONE: 703-578-2500  
WWW.FREYSSINETUSA.COM  
COPYRIGHT & MODIFICATION RESERVED

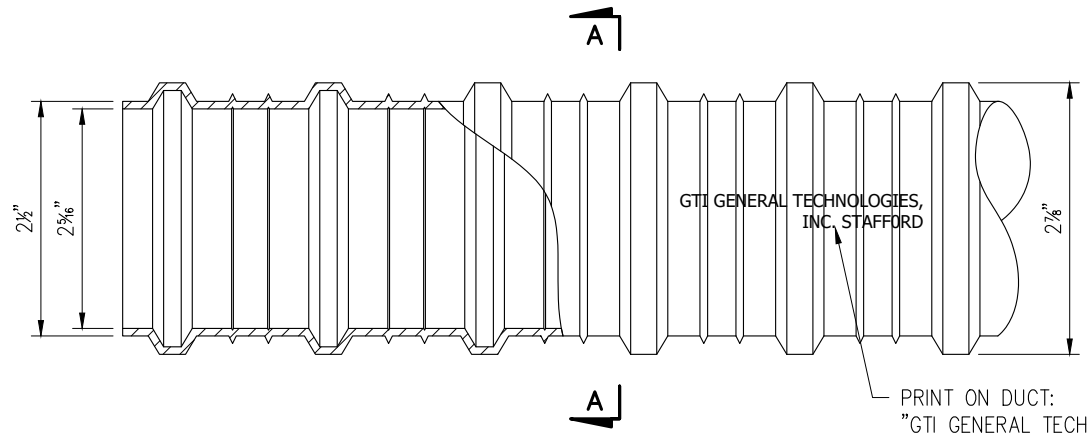
These drawings contain proprietary information restricted solely to this project and may not be reproduced in whole or part without the written expressed permission of FREYSSINET, INC.

DRAWING TITLE: **FREYSSINET 7C15 GROUT CAP & O-RING**

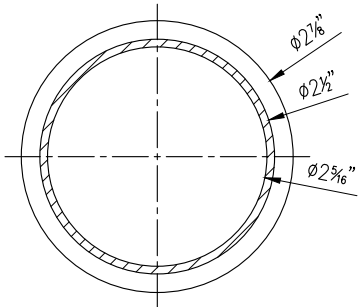
SCALE: DIMENSIONS IN INCHES. DO NOT SCALE THIS DRAWING.

REV: 0 SHEET NO.: 0

**FINC-7C15-04**



PRINT ON DUCT:  
 "GTI GENERAL TECHNOLOGIES, INC. STAFFORD,  
 TEXAS X3F U.S. & FOREIGN PATENT PENDING  
 P.N. 220200 59mm"



ELEVATION

SECTION A-A

ITEM	DESCRIPTION	MATERIAL	PART # / LABEL
04	7C15 59mm GTI DUCT	POLYPROPYLENE ASTM D4101	PPD59ID

- NOTE:
- STANDARD FIT FOR 7C15
  - DUCT IS DELIVERED IN STRAIGHT SECTIONS AND IS NOT INTENDED TO BE COILED.
  - DUCT MEETS OR EXCEEDS FDOT STANDARD SPECIFICATIONS, SECTION 960

MINIMUM RADII OF CURVATURE DETERMINED AS PER FIB BULLETIN 75, ANNEX A8			
STRAND NO.	5	6	7
Rmin [FT (m)]	10.9 (3.33)	12.3 (3.75)	13.6 (4.16)

REVISIONS:

REV.	DATE	BY	DESCRIPTION
1	02-24-20	JM	FDOT SPECIFICATION 960 REVIEW COMMENTS
0	11-26-19	JM	ORIGINAL

MEMBERS OF:

**FREYSSINET, INC**  
 SUSTAINABLE TECHNOLOGY  
 PHONE: 703-378-2500  
 WWW.FREYSSINETUSA.COM  
 COPYRIGHT & MODIFICATION RESERVED

These drawings contain proprietary information restricted solely to this project and may not be reproduced in whole or part without the written expressed permission of FREYSSINET, INC

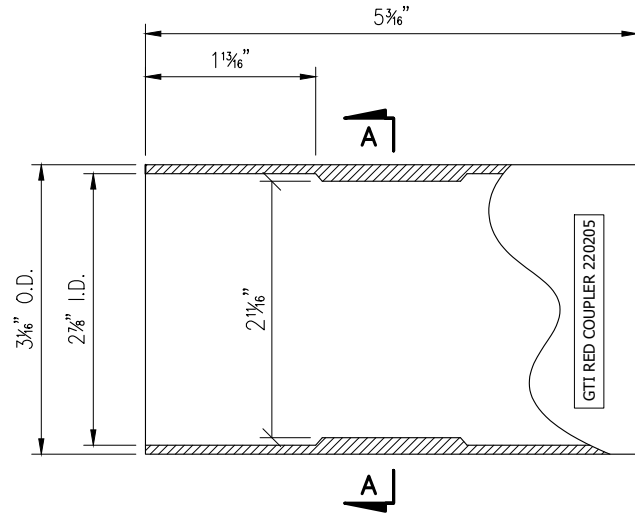
DRAWING TITLE:  
**7C15 59mm GTI DUCT**

SCALE:  
**DIMENSIONS IN INCHES. DO NOT SCALE THIS DRAWING.**

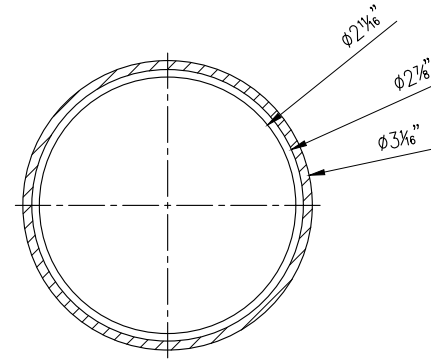
REV. **1**

SHEET NO.: **1**

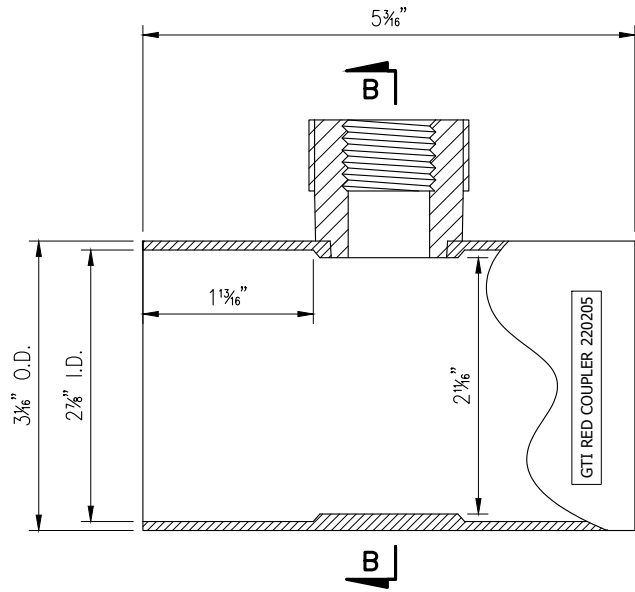
**FINC-7C15-05**



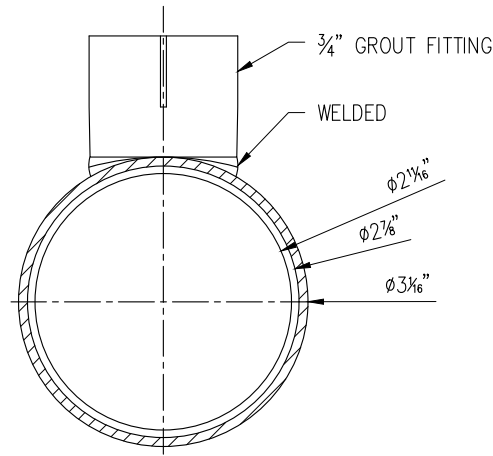
SECTION / ELEVATION COUPLER W/O VENT



SECTION A-A



SECTION / ELEVATION COUPLER W/VENT



SECTION B-B

ITEM	DESCRIPTION	MATERIAL	PART # / LABEL
05	7C15 59mm GTI SLIP-ON COUPLER W/ OR W/O VENT	POLYPROPYLENE ASTM D4101	PPCOUP59ID

NOTE:

- STANDARD FIT FOR 59mm DUCT
- COUPLER MEETS OR EXCEEDS FDOT STANDARD SPECIFICATIONS, SECTION 960

REVISIONS:

REV.	DATE	BY	CHKD	APP'D	DESCRIPTION
0	11-26-19	JM	TC/SN	SN	ORIGINAL

MEMBERS OF:

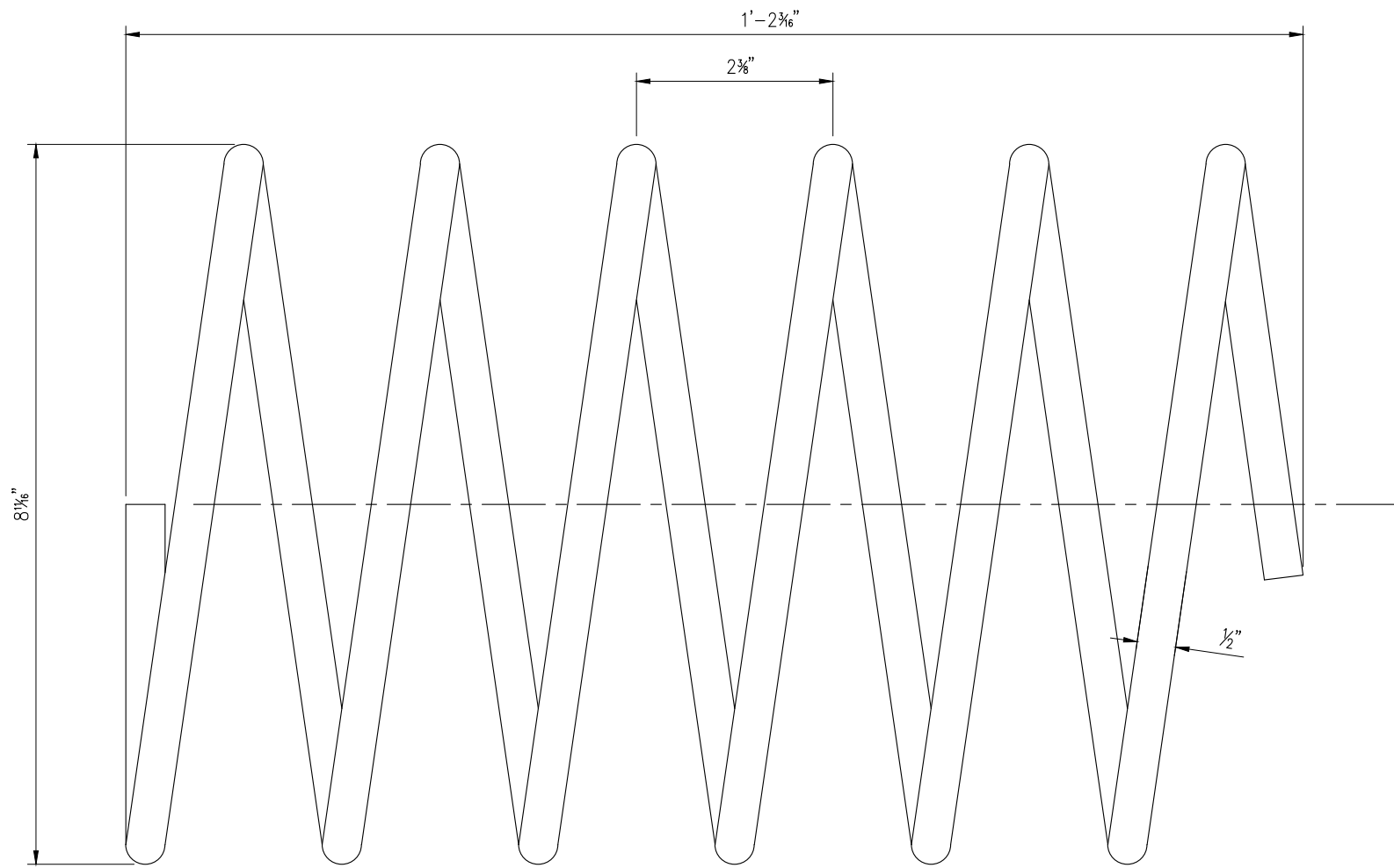


**FREYSSINET**  
SUSTAINABLE TECHNOLOGY  
FREYSSINET, INC  
PHONE: 703-378-2500  
WWW.FREYSSINETUSA.COM  
COPYRIGHT & MODIFICATION RESERVED

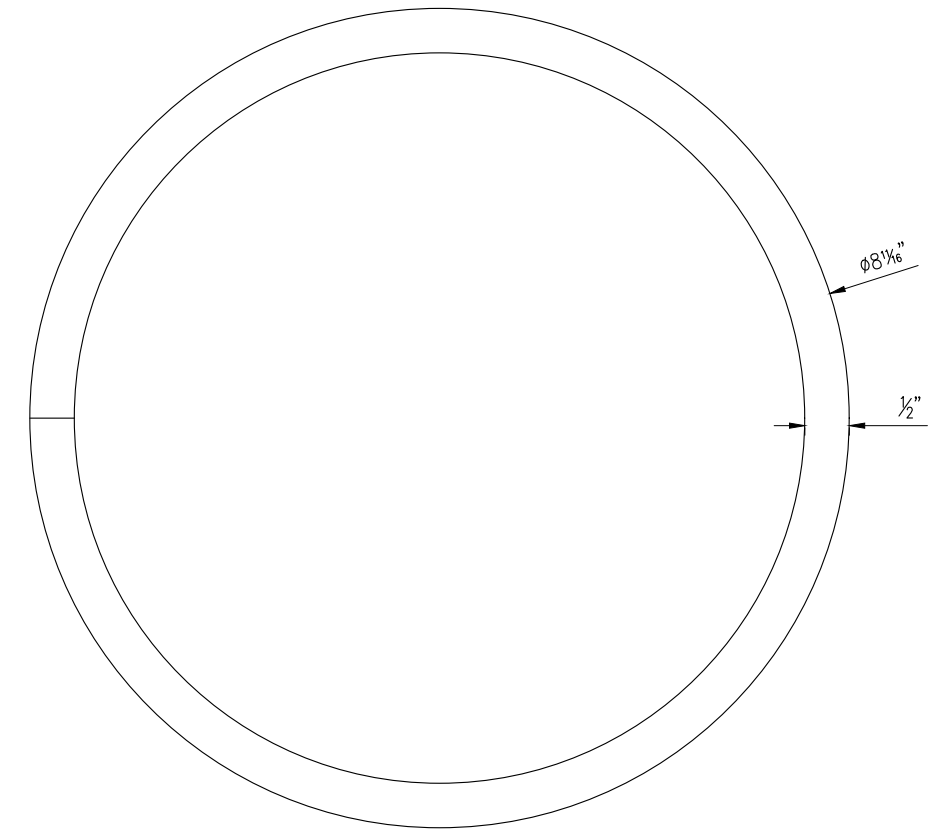
These drawings contain proprietary information restricted solely to this project and may not be reproduced in whole or part without the written expressed permission of FREYSSINET, INC

DRAWING TITLE:  
7C15 59mm DUCT COUPLER W/ OR W/O VENT

SCALE: DIMENSIONS IN INCHES. DO NOT SCALE THIS DRAWING.  
SHEET NO.: 0  
REV: 0  
FINC-7C15-06



ELEVATION



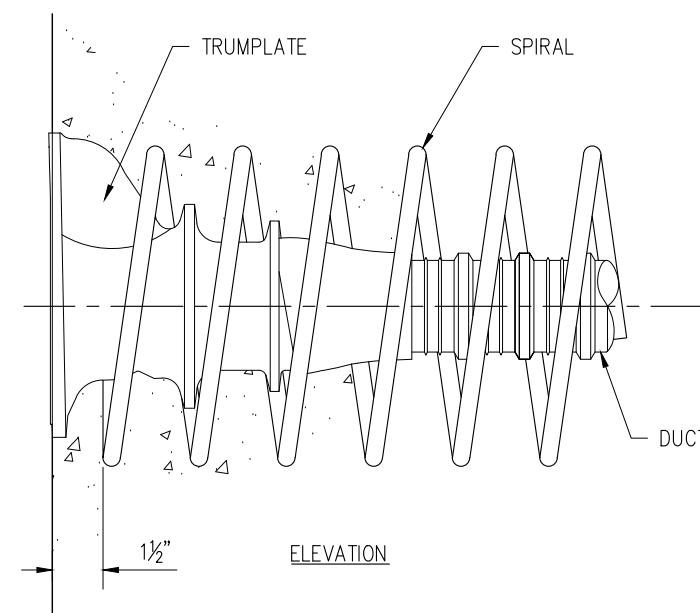
FRONT VIEW

ITEM	DESCRIPTION	MATERIAL	PART # / LABEL
06	7C15 SPIRAL REINFORCEMENT	STEEL GR. 60ksi; ASTM A615	SP1R7C15

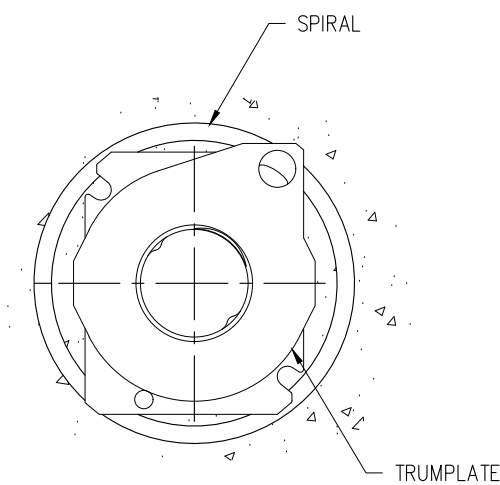
NOTE:

- #4 REBAR
- 6 TURNS
- 2.36" PITCH
- $\phi$  8.66"
- PROJECT SPECIFIC REQUIREMENTS MAY SUPERCEDE THESE DETAILS.

NOTE:  
SPIRAL SHALL BE TIED TO ADJACENT REBARS TO PREVENT ROTATION.



ELEVATION



FRONT VIEW

SPIRAL REINFORCEMENT POSITIONING  
(NOT TO SCALE)

REVISIONS:

REV.	DATE	DRAWN	CHECKED	APPROVED	REVISION DESCRIPTION
1	02-24-20	JM		SN	FDOT SPECIFICATION 960 REVIEW COMMENTS
0	11-26-19	JM		SN	ORIGINAL

MEMBERS OF:

**FREYSSINET**  
SUSTAINABLE TECHNOLOGY

**FREYSSINET, INC**  
PHONE: 703-378-2500  
WWW.FREYSSINETUSA.COM  
COPYRIGHT & MODIFICATION RESERVED

These drawings contain proprietary information restricted solely to this project and may not be reproduced in whole or part without the written expressed permission of FREYSSINET, INC

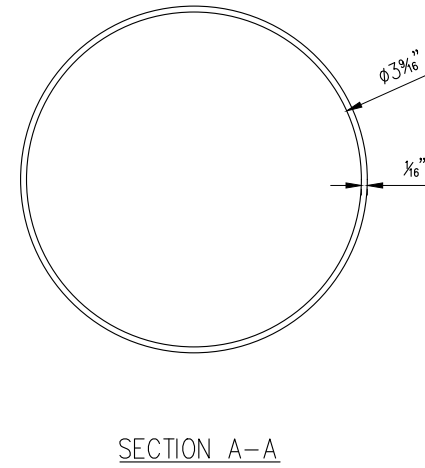
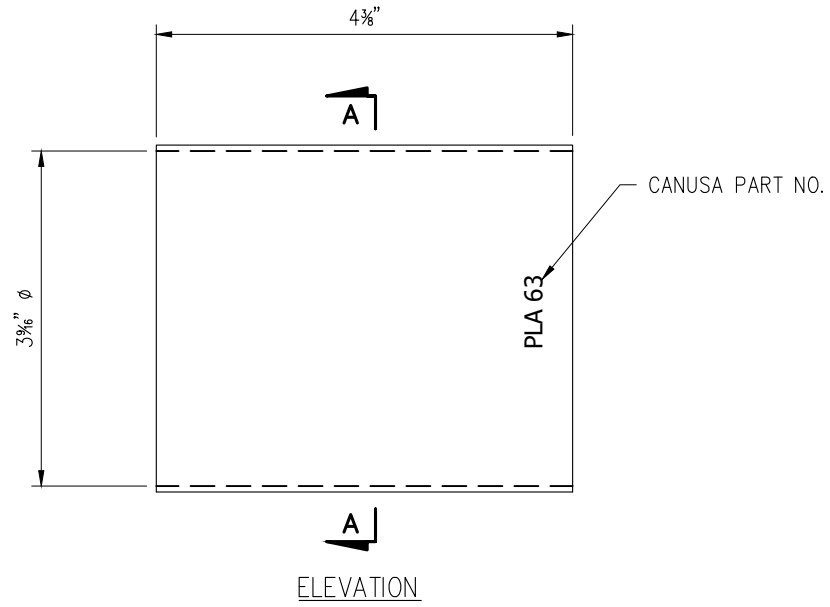
DRAWING TITLE:  
**7C15 SPIRAL REINFORCEMENT**

SCALE:  
DIMENSIONS IN INCHES. DO NOT SCALE THIS DRAWING.

REV. 1

SHEET NO.: 1

FINC-7C15-07



ITEM	DESCRIPTION	MATERIAL	PART # / LABEL
07	7C15 HEAT SHRINK SLEEVE (PLA-63-YE)	POLYOLEFIN BACKING W/ ADHESIVE	PLA63X90

NOTE:

- TUBULAR SLEEVE DIAMETER: 3 1/2" [90mm] AS SUPPLIED  
2 1/2" [63mm] FULLY RECOVERED
- HEAT SHRINK SLEEVE MEETS OR EXCEEDS FDOT STANDARD SPECIFICATIONS, SECTION 960
- INSTALLATION TO BE PERFORMED ACCORDING TO MANUFACTURER'S INSTRUCTIONS.

DRAWING TITLE:

7C15 HEAT SHRINK SLEEVE (PLA-63-YE)

SCALE:  
DIMENSIONS IN  
INCHES. DO NOT  
SCALE THIS DRAWING.

REV: 0

SHEET NO.:

0 FINC-7C15-08

These drawings contain  
proprietary information  
restricted solely to this  
project and may not be  
reproduced in whole or  
part without the written  
expressed permission of  
FREYSSINET, INC

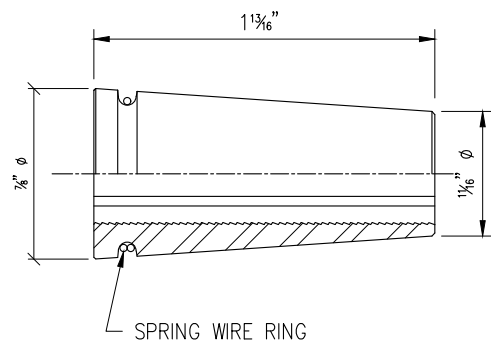
**FREYSSINET**  
SUSTAINABLE TECHNOLOGY  
FREYSSINET, INC  
PHONE: 703-378-2500  
WWW.FREYSSINETUSA.COM  
COPYRIGHT & MODIFICATION RESERVED

MEMBERS OF:  
**ASPI**  
**PAI**

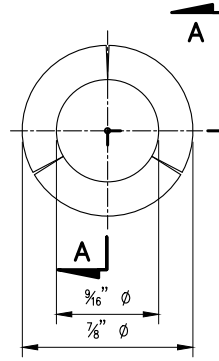
REVISIONS:

REV.	DATE	BY	DESCRIPTION
0	11-26-19	JM	TC/SN SN ORIGINAL





SECTION A-A/ ELEVATION



FRONT VIEW

ITEM	DESCRIPTION	MATERIAL	PART # / LABEL
08	C15 ANCHOR WEDGE	STEEL, 12L14 ASTM A240	WEDGE

- NOTES:
- NO STAMPED PART NUMBER

REVISIONS:

REV.	DATE	BY	DESCRIPTION
0	11-26-19	JM	TC/SN

MEMBERS OF:

**FREYSSINET, INC**  
SUSTAINABLE TECHNOLOGY  
PHONE: 703-378-2500  
WWW.FREYSSINETUSA.COM  
COPYRIGHT & MODIFICATION RESERVED

These drawings contain proprietary information restricted solely to this project and may not be reproduced in whole or part without the written expressed permission of FREYSSINET, INC

DRAWING TITLE: **3-PART WEDGE FOR 0.6" 7-WIRE STRAND**

SCALE: DIMENSIONS IN INCHES. DO NOT SCALE THIS DRAWING.

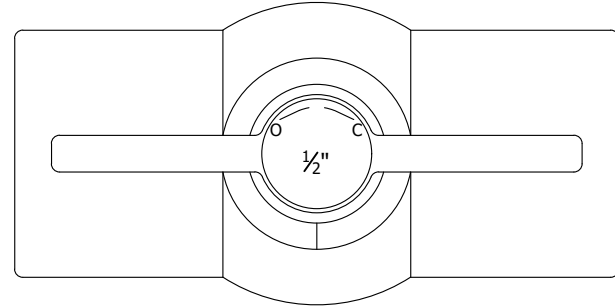
REV: **0** SHEET NO.: **0**

SCALE: DIMENSIONS IN INCHES. DO NOT SCALE THIS DRAWING.

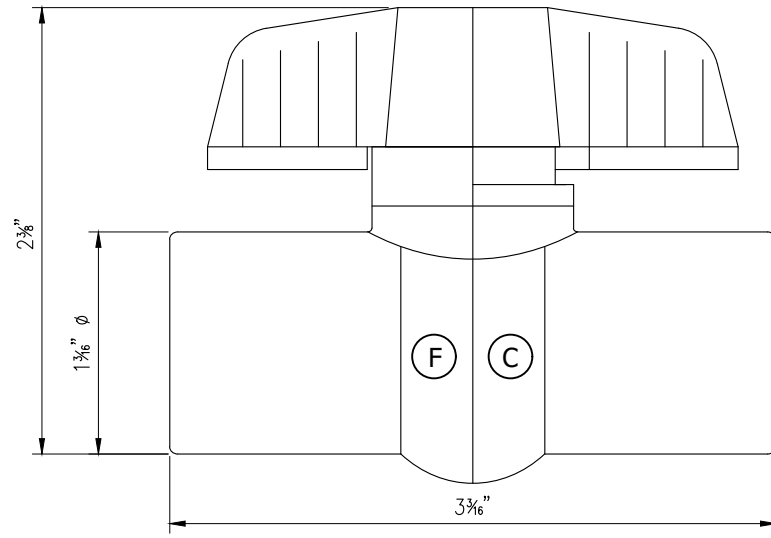
REV: **0** SHEET NO.: **0**

SCALE: DIMENSIONS IN INCHES. DO NOT SCALE THIS DRAWING.

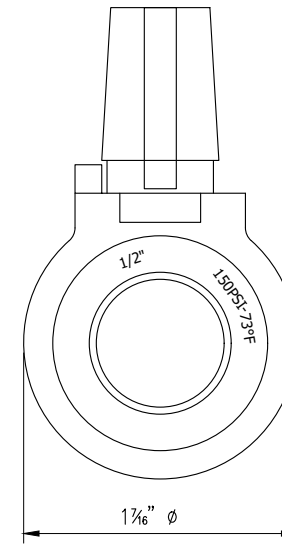




TOP VIEW



ELEVATION



FRONT VIEW

ITEM	DESCRIPTION	MATERIAL	PART # / LABEL
10*	1/2" NPT BALL VALVE	SCH. 80 PVC, ASTM 2467 (150 PSI RATED)	GBV12

NOTES:

- PRESSURE RATING  $\geq$ 150 psi
- 1/2" NPT
- NO STAMPED PART NUMBER
- EXTERNAL DIMENSIONS MAY VARY
- TEMPORARY FITTING

REVISIONS:

REV.	DATE	BY	CHKD.	APP'D.	DESCRIPTION
0	11-26-19	JM	TC/SN	SN	ORIGINAL

MEMBERS OF:



**FREYSSINET**  
SUSTAINABLE TECHNOLOGY

**FREYSSINET, INC**  
PHONE: 703-378-2500  
WWW.FREYSSINETUSA.COM  
COPYRIGHT & MODIFICATION RESERVED

These drawings contain proprietary information restricted solely to this project and may not be reproduced in whole or part without the written expressed permission of FREYSSINET, INC

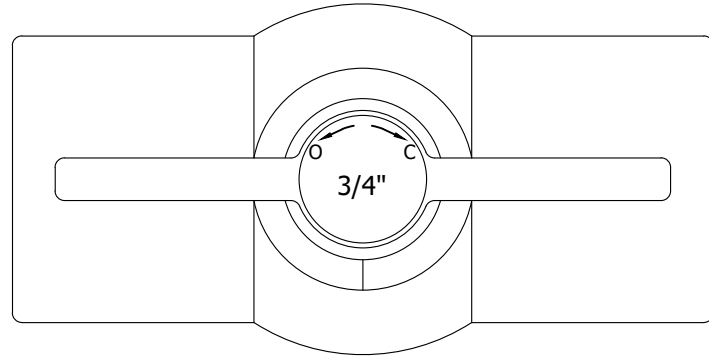
DRAWING TITLE:  
**1/2" NPT BALL VALVE (TEMPORARY FITTING)**

SCALE:  
DIMENSIONS IN INCHES. DO NOT SCALE THIS DRAWING.

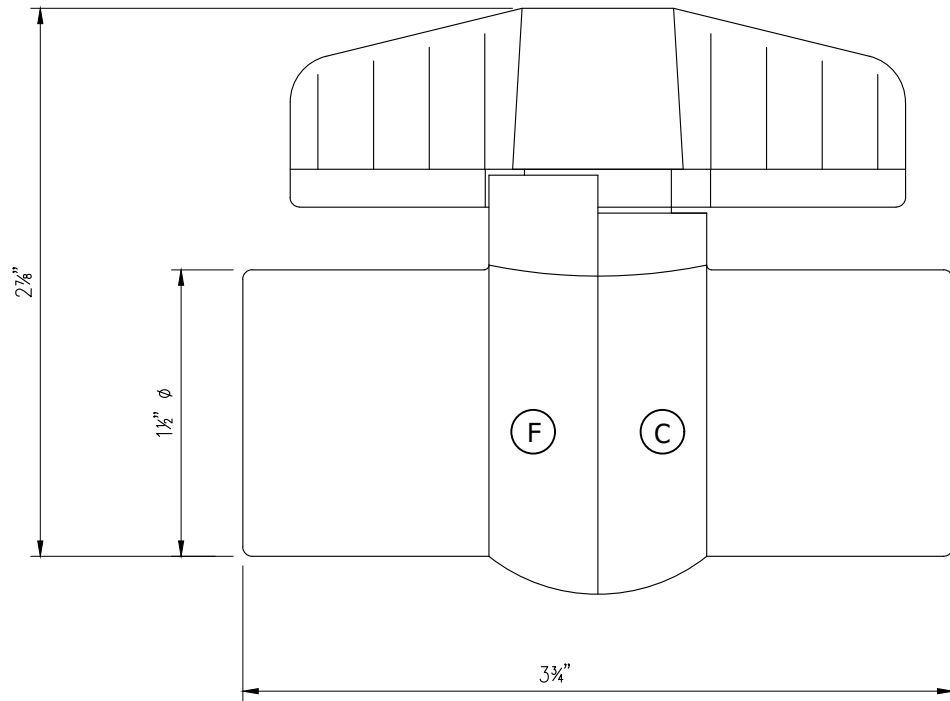
REV: 0

SHEET NO.: 0

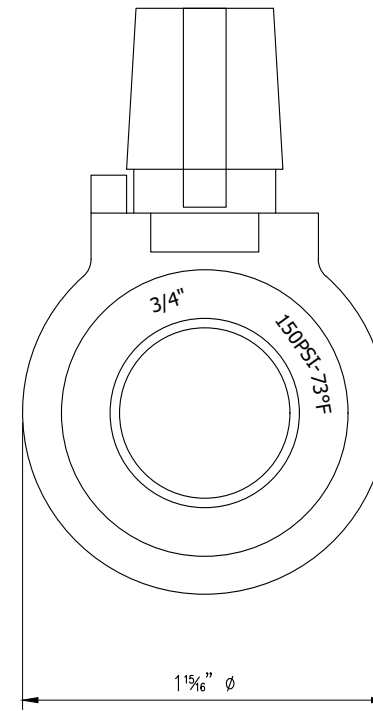
**FINC-7C15-11**



TOP VIEW



ELEVATION



FRONT VIEW

ITEM	DESCRIPTION	MATERIAL	PART # / LABEL
11*	3/4" NPT BALL VALVE	SCH. 80 PVC, ASTM 2467 (150 PSI RATED)	GBV34

NOTES:

- PRESSURE RATING  $\geq 150$  psi
- 3/4" NPT
- NO STAMPED PART NUMBER
- EXTERNAL DIMENSIONS MAY VARY
- TEMPORARY FITTING

REVISIONS:

REV.	DATE	BY	DESCRIPTION
0	11-26-19	JM	ORIGINAL

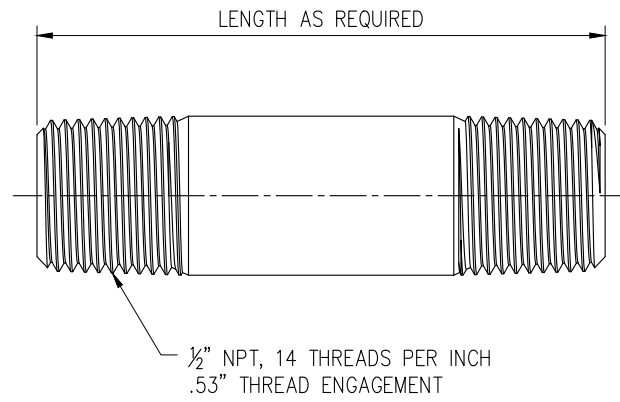
MEMBERS OF:



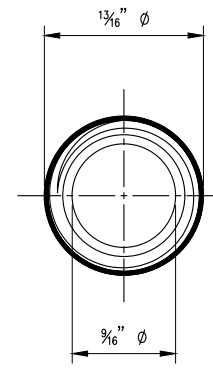
These drawings contain proprietary information restricted solely to this project and may not be reproduced in whole or part without the written expressed permission of FREYSSINET, INC.

DRAWING TITLE:  
3/4" NPT BALL VALVE (TEMPORARY FITTING)

SCALE: DIMENSIONS IN INCHES. DO NOT SCALE THIS DRAWING.  
SHEET NO.: 0  
REV: 0  
FINC-7C15-12



ELEVATION



FRONT VIEW

ITEM	DESCRIPTION	MATERIAL	PART # / LABEL
14*	1/2" NPT PIPE NIPPLE	SCH. 80 PVC OR SCH. 40 STEEL (150 PSI RATED)	GNP12

- NOTES:
- NO STAMPED PART NUMBER
  - PRESSURE RATING  $\geq$ 150 psi
  - 1/2" NPT
  - TEMPORARY FITTING

REVISIONS:

REV.	DATE	BY	CHKD.	APP'D.	DESCRIPTION
1	02-24-20	JM	TC/SN	SN	FDOT SPECIFICATION 960 REVIEW COMMENTS
0	11-26-19	JM	TC/SN	SN	ORIGINAL

MEMBERS OF:



**FREYSSINET, INC**  
 PHONE: 703-378-2500  
 WWW.FREYSSINETUSA.COM  
 COPYRIGHT & MODIFICATION RESERVED

These drawings contain proprietary information restricted solely to this project and may not be reproduced in whole or part without the written expressed permission of FREYSSINET, INC

DRAWING TITLE:

1/2" NPT PIPE NIPPLE (TEMPORARY FITTING)

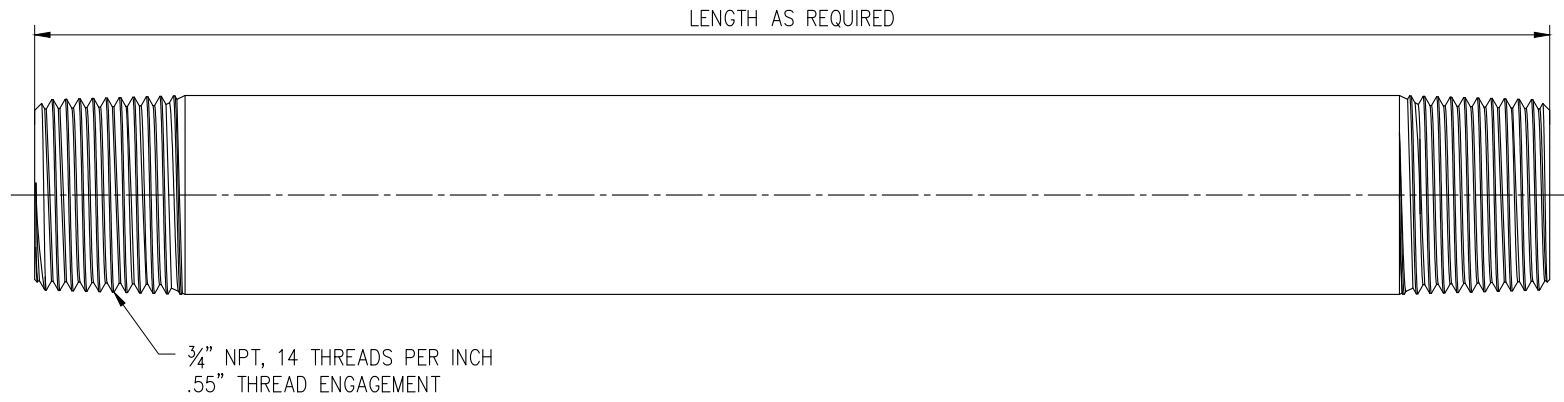
SCALE: DIMENSIONS IN INCHES. DO NOT SCALE THIS DRAWING.

REV:

1

SHEET NO.:

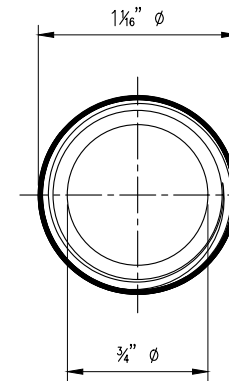
1 FINC-7C15-13



LENGTH AS REQUIRED

3/4" NPT, 14 THREADS PER INCH  
.55" THREAD ENGAGEMENT

ELEVATION



FRONT VIEW

ITEM	DESCRIPTION	MATERIAL	PART # / LABEL
15*	3/4" NPT PIPE NIPPLE	SCH. 80 PVC OR SCH. 40 STEEL (150 PSI RATED)	GNP34

NOTES:

- NO STAMPED PART NUMBER
- PRESSURE RATING ≥150 psi
- 3/4" NPT
- TEMPORARY FITTING

REVISIONS:

REV.	DATE	DRAWN	CHECKED	APPROVED	REVISION DESCRIPTION
1	02-24-20	JM	TC/SN	SN	FDOT SPECIFICATION 960 REVIEW COMMENTS
0	11-26-19	JM	TC/SN	SN	ORIGINAL

MEMBERS OF:



**FREYSSINET**  
SUSTAINABLE TECHNOLOGY

**FREYSSINET, INC**  
PHONE: 703-378-2900  
WWW.FREYSSINETUSA.COM  
COPYRIGHT & MODIFICATION RESERVED

These drawings contain proprietary information restricted solely to this project and may not be reproduced in whole or part without the written expressed permission of FREYSSINET, INC

DRAWING TITLE:  
**3/4" NPT PIPE NIPPLE (TEMPORARY FITTING)**

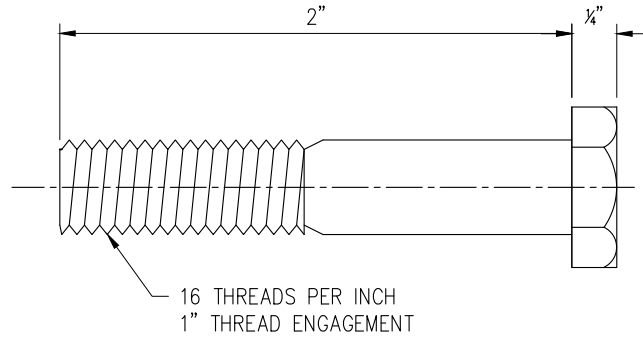
SCALE:  
DIMENSIONS IN INCHES. DO NOT SCALE THIS DRAWING.

REV: **1**

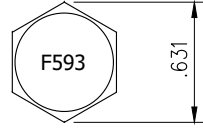
SHEET NO.: **1**

**FINC-7C15-14**

ITEM	DESCRIPTION	MATERIAL	PART # / LABEL
19	3/8"-16 HEX BOLT (2" LONG)	316 STAINLESS STEEL ASTM F593	BL38X200



ELEVATION



FRONT VIEW

DRAWING TITLE:  
3/8"-16 HEX BOLT

SCALE:  
DIMENSIONS IN INCHES. DO NOT SCALE THIS DRAWING.

REV. 0

SHEET NO.:  
FINC-7C15-15

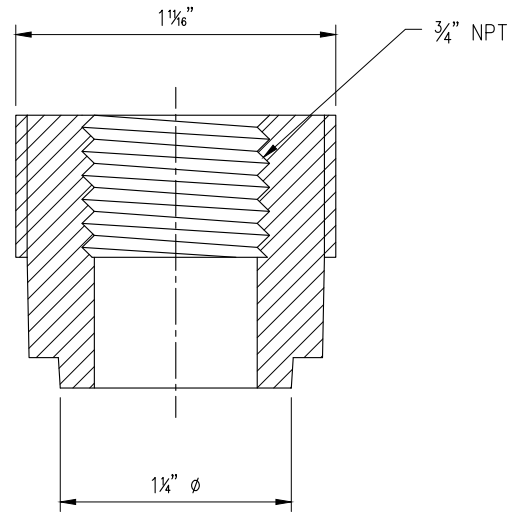
These drawings contain proprietary information restricted solely to this project and may not be reproduced in whole or part without the written expressed permission of FREYSSINET, INC.



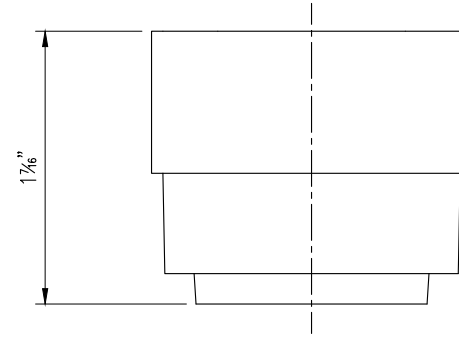
REVISIONS:

REV.	DATE	DATE	DATE	DATE	DATE	DATE	DATE	DATE	DATE
0	11-26-19								

REV. DATE DATE DATE DATE DATE DATE DATE DATE DATE



SECTION



FRONT VIEW

ITEM	DESCRIPTION	MATERIAL	PART # / LABEL
20	3/4" NPT WELDABLE PORT	POLYPROPYLENE ASTM D4101	34NPTPORT

NOTES:

- WELDED TO DUCT WALL

REVISIONS:

REV.	DATE	BY	DESCRIPTION
0	11-26-19	JM	TC/SN
			CHECKED
			APPROVED
			SN
			ORIGINAL

MEMBERS OF:

**FREYSSINET, INC**  
SUSTAINABLE TECHNOLOGY  
PHONE: 703-378-2500  
WWW.FREYSSINETUSA.COM  
COPYRIGHT & MODIFICATION RESERVED

These drawings contain proprietary information restricted solely to this project and may not be reproduced in whole or part without the written expressed permission of FREYSSINET, INC

DRAWING TITLE: **3/4" NPT WELDABLE PORT**

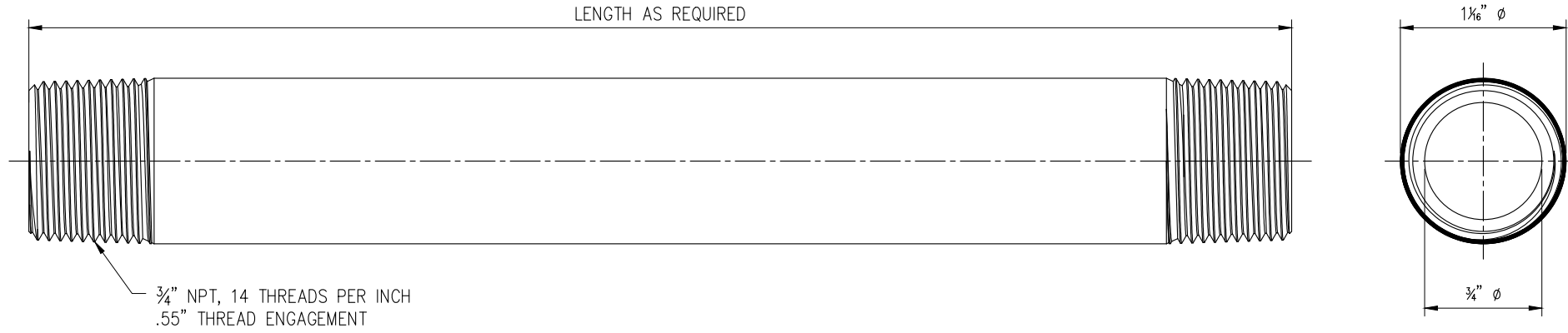
SCALE: DIMENSIONS IN INCHES. DO NOT SCALE THIS DRAWING.

REV: **0**

SHEET NO.: **0**

FINC-7C15-16





ITEM	DESCRIPTION	MATERIAL	PART # / LABEL
21	3/4" NPT PE TUBE	HIGH-DENSITY POLYETHYLENE PER ASTM D3350	RGCLP34X100

- NOTES:
- NO STAMPED PART NUMBER
  - PRESSURE RATING  $\geq 150$  psi
  - 3/4" NPT, MANUALLY THREADED

REVISIONS:

REV.	DATE	BY	CHKD	APP'D	DESCRIPTION
0	11-26-19	JM	TC/SN	SN	ORIGINAL

MEMBERS OF:

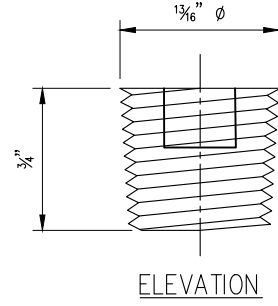
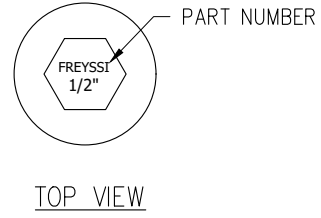


**FREYSSINET, INC**  
 PHONE: 703-378-2500  
 WWW.FREYSSINETUSA.COM  
 COPYRIGHT & MODIFICATION RESERVED

These drawings contain proprietary information restricted solely to this project and may not be reproduced in whole or part without the written expressed permission of FREYSSINET, INC

DRAWING TITLE:  
**3/4" NPT PE TUBE**

SCALE: DIMENSIONS IN INCHES. DO NOT SCALE THIS DRAWING.  
 REV: 0  
 SHEET NO.: 0  
**FINC-7C15-17**



ITEM	DESCRIPTION	MATERIAL	PART # / LABEL
23	1/2" NPT PLUG	NYLON ASTM D5989	GPLG12

- NOTES:
- PRESSURE RATING  $\geq$  150 psi
  - PLUG MEETS OR EXCEEDS FDOT STANDARD SPECIFICATIONS, SECTION 960

REVISIONS:

REV.	DATE	DRAWN	CHECKED	APPROVED	REVISION DESCRIPTION
0	11-26-19	JM	TC/SN	SN	ORIGINAL



**FREYSSINET, INC**  
 PHONE: 703-378-2500  
 WWW.FREYSSINETUSA.COM  
 COPYRIGHT & MODIFICATION RESERVED

These drawings contain proprietary information restricted solely to this project and may not be reproduced in whole or part without the written expressed permission of FREYSSINET, INC

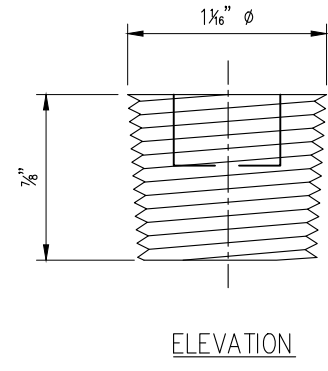
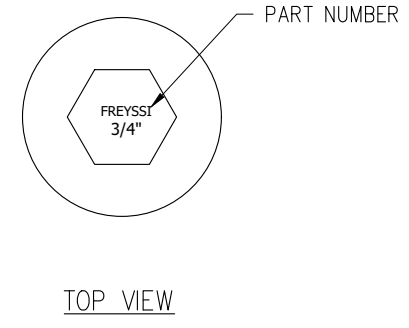
DRAWING TITLE: **1/2" NPT NYLON PLUG**

SCALE: DIMENSIONS IN INCHES. DO NOT SCALE THIS DRAWING.

REV: **0** SHEET NO.: **0** FINC-7C15-18

ITEM	DESCRIPTION	MATERIAL	PART # / LABEL
24	3/4" NPT PLUG	NYLON ASTM D5989	GPLG34

- NOTES:
- PRESSURE RATING  $\geq 150$  psi
  - PLUG MEETS OR EXCEEDS FDOT STANDARD SPECIFICATIONS, SECTION 960



<p>DRAWING TITLE: <b>3/4" NPT NYLON PLUG</b></p> <p>SCALE: DIMENSIONS IN INCHES. DO NOT SCALE THIS DRAWING.</p>	<p>REV: 0</p>	<p>SHEET NO.: 0</p>	<p>FINC-7C15-19</p>																				
<p>These drawings contain proprietary information restricted solely to this project and may not be reproduced in whole or part without the written expressed permission of FREYSSINET, INC</p>																							
<p><b>FREYSSINET, INC</b> SUSTAINABLE TECHNOLOGY PHONE: 703-378-2500 WWW.FREYSSINETUSA.COM COPYRIGHT &amp; MODIFICATION RESERVED</p>																							
<p>MEMBERS OF:</p>																							
<p>REVISIONS:</p> <table border="1" style="width: 100%; border-collapse: collapse;"> <thead> <tr> <th>REV.</th> <th>DATE</th> <th>DATE</th> <th>DATE</th> <th>DATE</th> <th>DATE</th> <th>DATE</th> <th>DATE</th> <th>DATE</th> <th>DATE</th> </tr> </thead> <tbody> <tr> <td>0</td> <td>11-26-19</td> <td>JM</td> <td>TC/SN</td> <td>SN</td> <td>ORIGINAL</td> <td></td> <td></td> <td></td> <td></td> </tr> </tbody> </table>				REV.	DATE	DATE	DATE	DATE	DATE	DATE	DATE	DATE	DATE	0	11-26-19	JM	TC/SN	SN	ORIGINAL				
REV.	DATE	DATE	DATE	DATE	DATE	DATE	DATE	DATE	DATE														
0	11-26-19	JM	TC/SN	SN	ORIGINAL																		