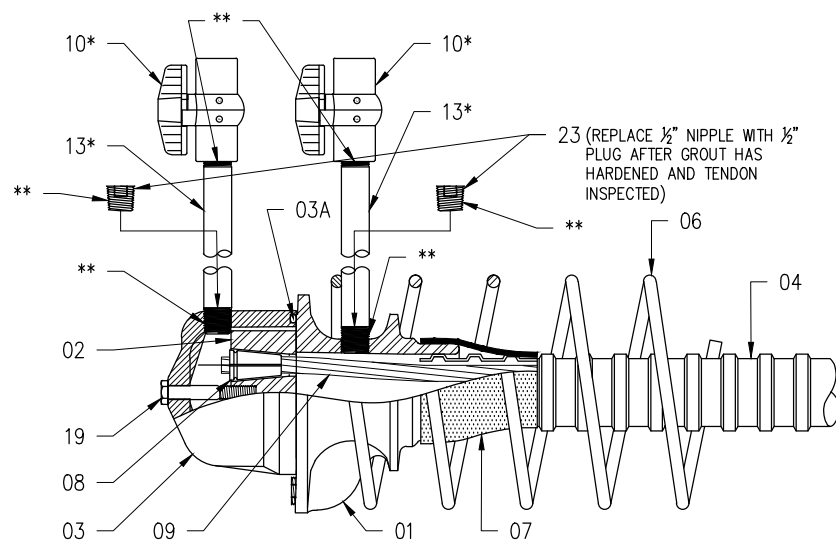


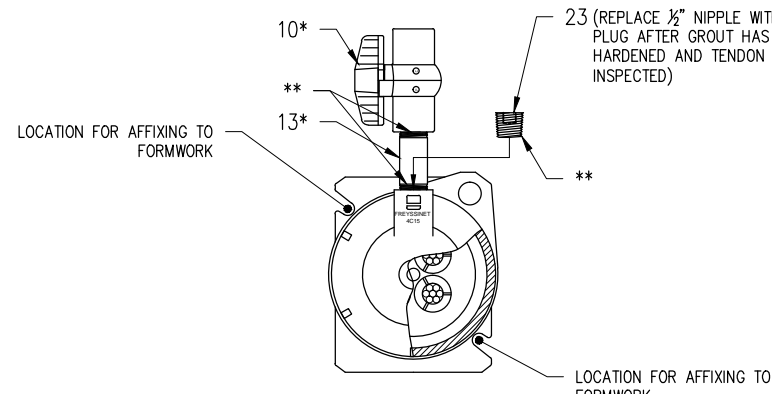
NOTE: HOLES THAT ARE LEFT AFTER REMOVAL OF TEMPORARY FITTINGS, TO BE FILLED WITH NON-SHRINK GROUT.

** APPLY TEFLON TAPE OR THREAD SEAL PASTE AT ALL PORT/VALVE AND PLUG CONNECTIONS AS NEEDED.

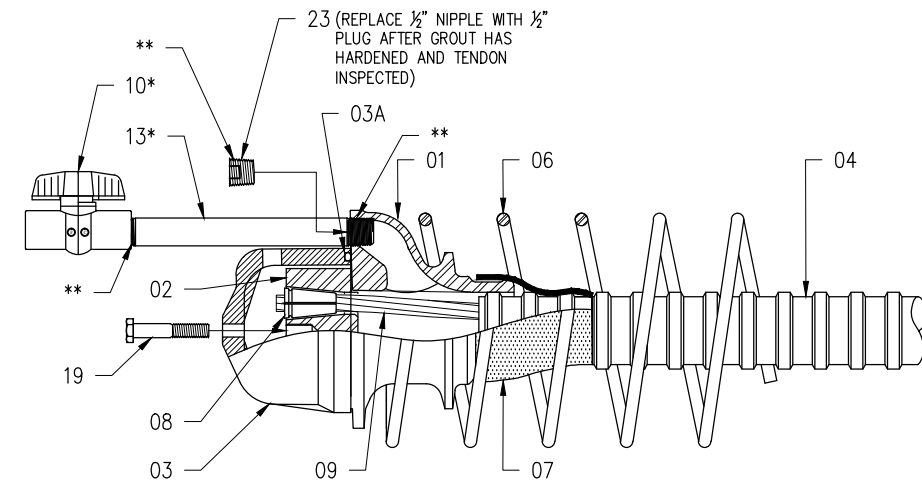
CAUTION: ASSEMBLY OF ANCHORAGE AND INSTALLATION OF TENDONS SHALL BE PERFORMED BY QUALIFIED POST-TENSIONING PERSONNEL ONLY.



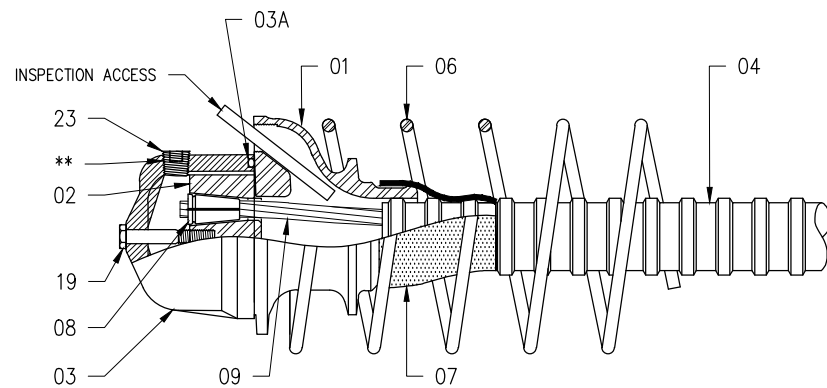
4C15 ASSEMBLY PARTIAL SECTION
GROUTING & INSPECTION FROM TOP



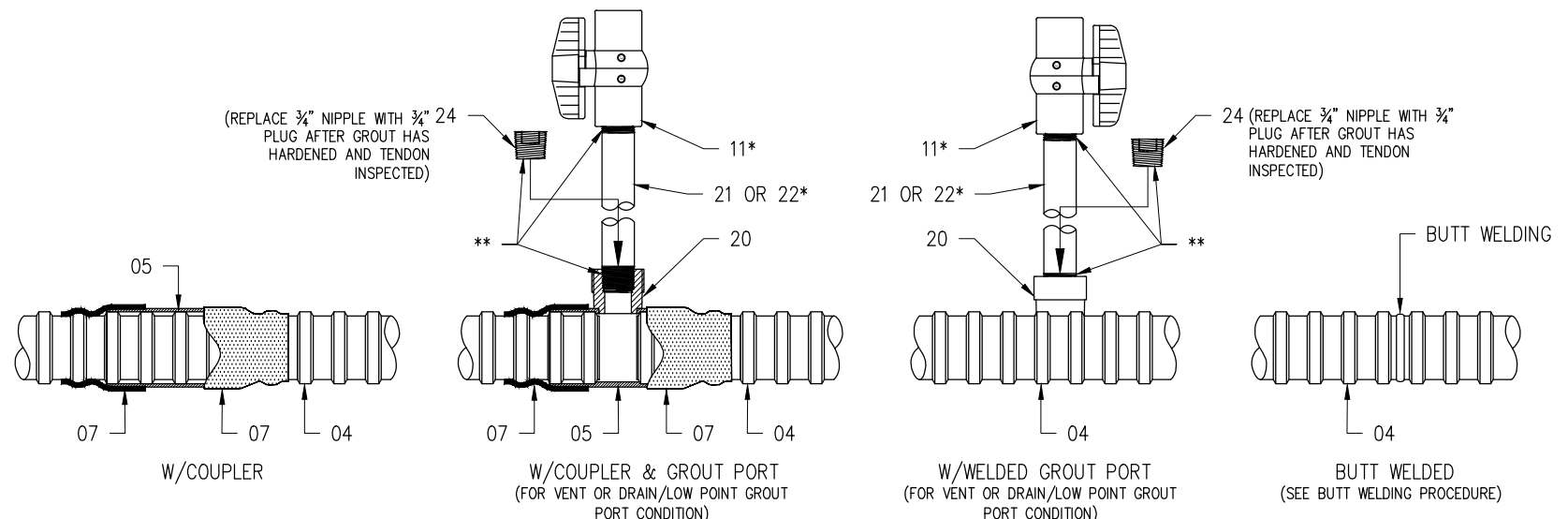
END VIEW



4C15 ASSEMBLY PARTIAL SECTION
GROUT INLET/OUTLET



4C15 ASSEMBLY PARTIAL SECTION
GROUT INSPECTION



INTERMEDIATE CONNECTION DETAILS
SEE INSTALLATION PROCEDURE

NOTE:

- COMPONENTS MARKED WITH "*" ON THE DRAWING ARE TEMPORARY.
- PORT AND HOSE ASSEMBLY MAY BE ORIENTED IN ANY REQUIRED DIRECTION TO CREATE A VENT OR A DRAIN.
- EPOXY GROUT SHALL BE USED TO FILL RECESSES: REFER TO FDOT STANDARD SPECIFICATIONS AND STANDARD INDEX 462-003.
- CONCRETE COVER MUST MEET FDOT STRUCTURES DESIGN GUIDELINES.

4C15 ASSEMBLY COMPONENTS

ITEM	DESCRIPTION	MATERIAL	PART # / LABEL	DRAWING
01	4C15 ANCHORAGE (TRUMPLATE)	ASTM A48, 35B GALV. ASTM A123	TP4C15G	FINC-4C15-02
02	4C15 ANCHOR BLOCK (WEDGE PLATE)	STEEL, 4140 QUENCHED AND TEMPERED	AB4C15	FINC-4C15-03
03	4C15 GROUT CAP	NYLON ASTM D5989	CAP4C15	FINC-4C15-04
03A	4C15 ANCHORAGE CAP O-RING	HNBR 70, AS PER TABLE 2.2.1.7-1 OF FDOT 960 SPECS	ORNG025X400	FINC-4C15-04
04	4C15 48mm GTI DUCT	POLYPROPYLENE ASTM D4101	PPD48ID	FINC-4C15-05
05	4C15 48mm GTI SLIP-ON COUPLER W/ OR W/O VENT	POLYPROPYLENE ASTM D4101	PPCOUP48ID	FINC-4C15-06
06	4C15 SPIRAL REINFORCEMENT	STEEL GR. 60ksi; ASTM A615	SPIR4C15	FINC-4C15-07
07	4C15 HEAT SHRINK SLEEVE (PLA 55-YE)	POLYOLEFIN BACKING W/ ADHESIVE	PLA55X90	FINC-4C15-08
08	C15 ANCHOR WEDGE	STEEL, 12L14 ASTM A240	WEDGE	FINC-4C15-09
09	0.6" DIA. STRAND	STEEL, LOW RELAX. GR 270 STRAND PER ASTM A416	STRAND	FINC-4C15-10
10*	1/2" NPT BALL VALVE	SCH. 80 PVC, ASTM 2467 (150 PSI RATED)	GBV12	FINC-4C15-11
11*	3/4" NPT BALL VALVE	SCH. 80 PVC, ASTM 2467 (150 PSI RATED)	GBV34	FINC-4C15-12
13*	1/2" NPT PIPE NIPPLE	SCH. 80 PVC OR SCH. 40 STEEL (150 PSI RATED)	GNP12	FINC-4C15-13
19	3/8"-16 HEX BOLT (2 1/2" LONG)	316 STAINLESS STEEL ASTM F593	BL38X250	FINC-4C15-14
20	3/4" NPT WELDABLE PORT	POLYPROPYLENE ASTM D4101	34NPTPORT	FINC-4C15-15
21	3/4" PE TUBE	HIGH-DENSITY POLYETHYLENE PER ASTM D3350	RGCLP34X100	FINC-4C15-16
22*	3/4" NPT PIPE NIPPLE	SCH. 80 PVC OR SCH. 40 STEEL (150 PSI RATED)	GNP34	FINC-4C15-17
23	1/2" NPT PLUG	NYLON ASTM D5989	GPLG12	FINC-4C15-18
24	3/4" NPT PLUG	NYLON ASTM D5989	GPLG34	FINC-4C15-19

4C15 INSTALLATION PROCEDURE:

NOTE: INSTALLATION PROCEDURE IS GENERIC. FOLLOW SPECIFIC PROJECT REQUIREMENTS & FDOT SPECIFICATIONS.

- LAYOUT EACH TENDON ANCHORAGE AND DUCT LOCATION ACCORDING TO THE SPACING SHOWN ON THE TENDON LAYOUT PLANS.
- BOLT THE ANCHORAGE TRUMPLATE SECURELY AND PERPENDICULAR TO THE BLOCK-OUT FORM.
- INDIVIDUAL DUCT LENGTHS SHALL BE COUPLED TOGETHER TO OBTAIN THE CORRECT LENGTH FROM ANCHORAGE TO ANCHORAGE. INSTALL COUPLERS & WELDED GROUT PORTS AS SHOWN ON THESE DRAWINGS AND THE APPLICABLE CONTRACT PLANS.
- USE HEAT SHRINK SLEEVES TO SEAL DUCT TO DUCT AND DUCT TO TRUMPLATE CONNECTIONS FOLLOWING THE MANUFACTURER'S RECOMMENDED PROCEDURE. CARE MUST BE TAKEN TO AVOID BURNS ON THE DUCT.
- PLACE ALL REINFORCING STEEL AS SHOWN ON THESE DRAWINGS.
- PROCEED WITH CONCRETING, TAKING CARE TO NOT DAMAGE OR DISPLACE THE DUCT.
- PLACE THE CORRECT QUANTITY OF STRAND IN EACH DUCT LEAVING MINIMUM STRESSING TAILS AT EACH END FOR STRESSING EQUIPMENT. THIS CAN BE ACCOMPLISHED BY PUSHING OR PULLING THE STRAND THROUGH THE DUCT.
- INSTALL THE ANCHOR BLOCK AT EACH END OF THE TRUMPLATE. INSERT THE WEDGES INTO THE ANCHOR BLOCK. MAKE SURE WEDGE CAVITIES ARE CLEAN & FREE OF RUST.
- PER FDOT SPECIFICATION 462-8.2.1.1, AN AIR PRESSURE TEST IS REQUIRED PRIOR TO CONCRETE PLACEMENT.
- STRESSING MAY PROCEED ONCE THE CONCRETE HAS REACHED THE REQUIRED COMPRESSIVE STRENGTH AS INDICATED IN THE PLANS AND AS CONFIRMED BY TESTS.

- ALL TENDONS SHALL BE STRESSED BY JACKING FROM ONE OR TWO ENDS IN THE APPROVED SEQUENCE. ONCE APPROVED, CUT STRAND TAILS TO 1.5" MAXIMUM LENGTH.
- INSTALL GROUT CAPS, INLET AND OUTLET ACCESSORIES.
- PERFORM DUCT PRESSURE FIELD TEST REQUIRED BY FDOT SPECIFICATIONS.
- GROUTING SHALL BE PERFORMED IN ACCORDANCE WITH THE LATEST EDITION OF THE PTI GUIDE SPECIFICATIONS FOR GROUTING OF POST TENSIONING STRUCTURES OR APPLICABLE SPECIFICATION.

VENDOR-SPECIFIC INSTALLATION PROCEDURE FOR WELDING PORT (ITEM #20) TO DUCT:

MARK GTI DUCT & DRILL 7/8" (22mm) HOLE IN THE GTI DUCT AND CLEAN HOLE AND GTI WELDED GROUT PORT. WELDED GROUT PORT HOLE REQUIRED TO BE BETWEEN RIBS OF DUCT.

FOLLOW MANUFACTURER'S REQUIREMENTS FOR PREPARATION OF THE PORT WELDER.

SIMULTANEOUSLY, INSERT MALE ADAPTER OF GTI GROUT PORT WELDER INTO DRILLED HOLE IN DUCT AND PLACE GTI WELDED GROUT PORT INTO FEMALE ADAPTER.

APPLY LIGHT PRESSURE FOR 20-25 SECONDS BY PUSHING THE GTI WELDED GROUT PORT WITH THE PALM OF HAND.

REMOVE THE PORT WELDER FROM THE DRILLED HOLE AND WITHIN 5 SECONDS, INSERT THE WELDED GROUT PORT UNTIL SHOULDER IS REACHED.

ALLOW THE GTI DUCT AND GTI WELDED GROUT PORT TO COOL FOR A MINIMUM OF 4 MINUTES.

AFTER THE COOLING TIME HAS FINISHED, THE ASSEMBLY CAN BE USED AS REQUIRED.

REVISIONS:

MEMBERS OF:



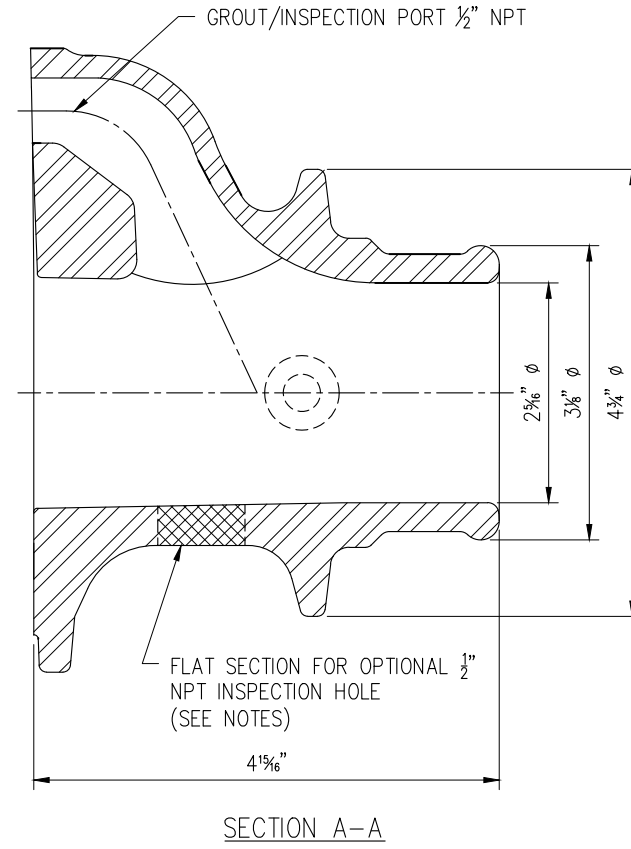
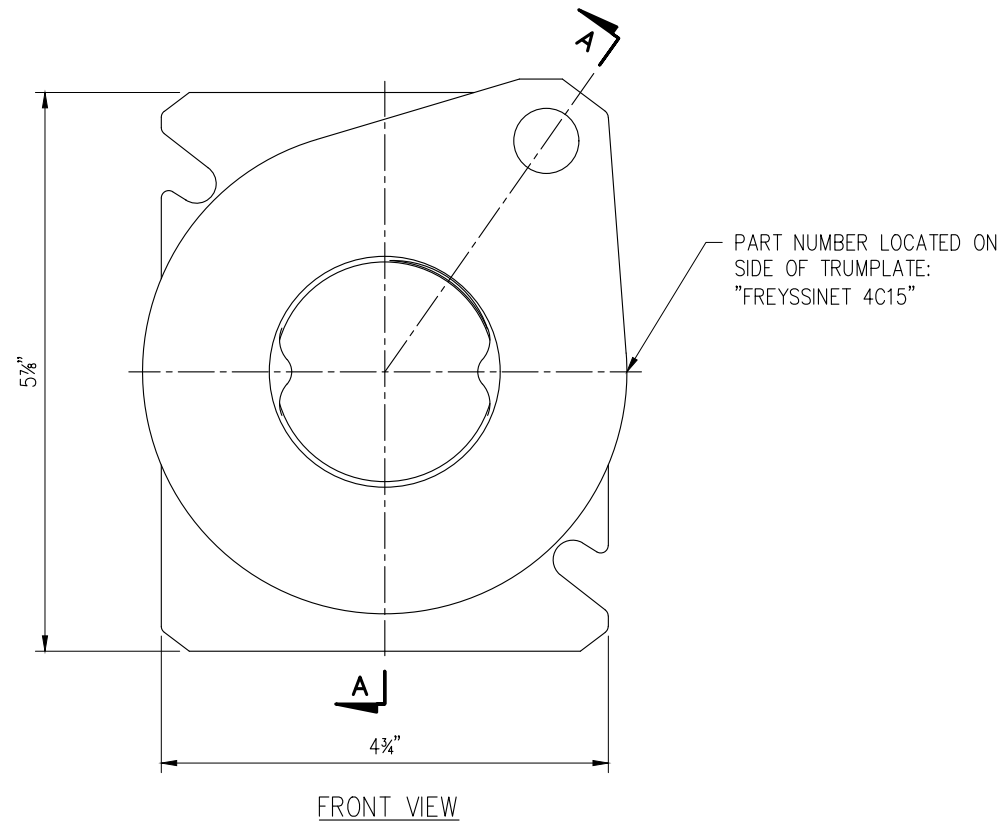
These drawings contain proprietary information restricted solely to this project and may not be reproduced in whole or part without the written expressed permission of FREYSSINET, INC

DRAWING TITLE:
**FREYSSINET 4C15 INTERNAL BONDED PT SYSTEM
W/48mm ROUND CORRUGATED DUCT ASSEMBLY**

SCALE:
DIMENSIONS IN INCHES. DO NOT SCALE THIS DRAWING.

REV: 1
SHEET NO.: 1
FINC-4C15-01

REV.	DATE	BY	CHKD	APP'D	REVISION DESCRIPTION
1	04-22-20	JM	JM	JM	FDOT SPECIFICATION 960 REVIEW COMMENTS ORIGINAL
0	11-26-19	JM	JM	JM	CHECKED APPROVED



ITEM	DESCRIPTION	MATERIAL	PART # / LABEL
01	4C15 ANCHORAGE (TRUMPLATE)	ASTM A48, 35B GALV. ASTM A123	TP4C15G

NOTES:

- FLAT SECTION DRILLED & TAPPED FOR GROUTING & INSPECTION ONLY WHEN THERE IS NO ACCESS TO FRONT OF TRUMPLATE. OTHERWISE LEAVE AS IS. DRILLING & TAPPING SHALL BE COMPLETED PRIOR TO SHIPMENT TO PROJECT.

DRAWING TITLE:

FREYSSINET 4C15 ANCHORAGE (TRUMPLATE)

SCALE:
DIMENSIONS IN
INCHES. DO NOT
SCALE THIS DRAWING.

REV:

1

SHEET NO.:

1 FINC-4C15-02

These drawings contain proprietary information restricted solely to this project and may not be reproduced in whole or part without the written expressed permission of FREYSSINET, INC.

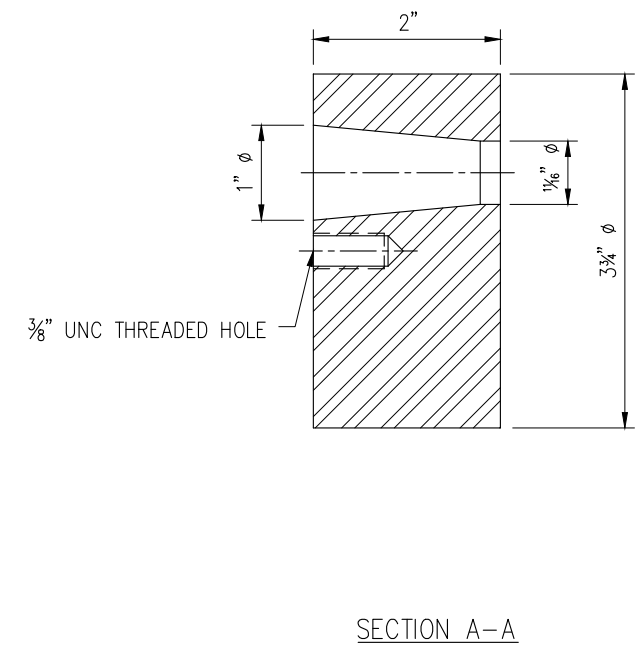
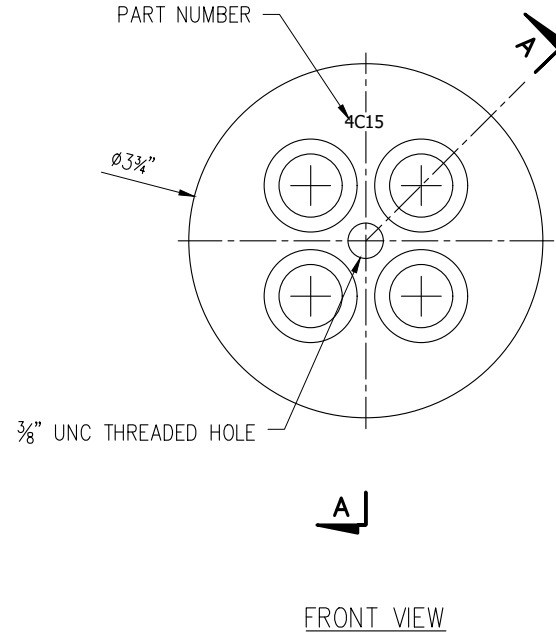
FREYSSINET, INC
SUSTAINABLE TECHNOLOGY
PHONE: 703-378-2500
WWW.FREYSSINETUSA.COM
COPYRIGHT & MODIFICATION RESERVED

MEMBERS OF:



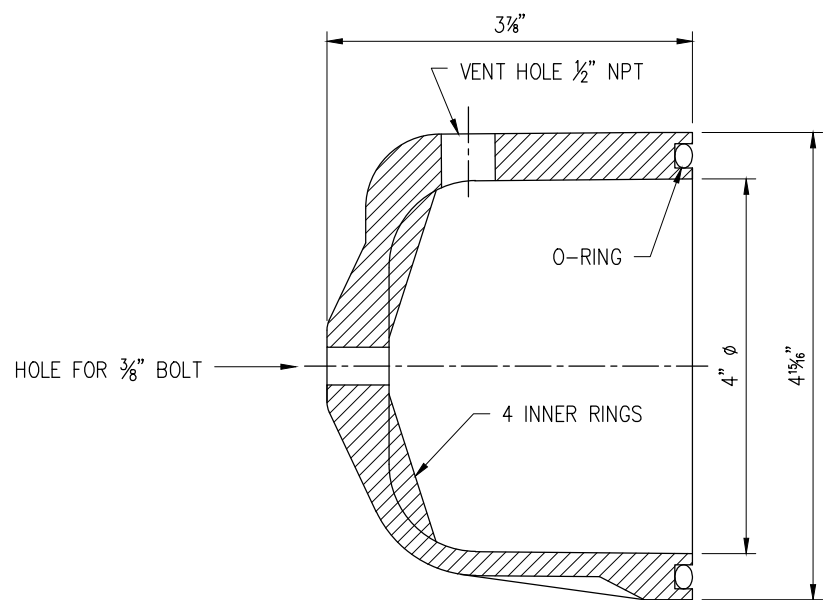
REVISIONS:

REV.	DATE	DRAWN	CHECKED	APPROVED	REVISION DESCRIPTION	
1	04-22-20	JM		TC/SN	SN	FDOT SPECIFICATION 960 REVIEW COMMENTS
0	11-26-19	JM		TC/SN	SN	ORIGINAL

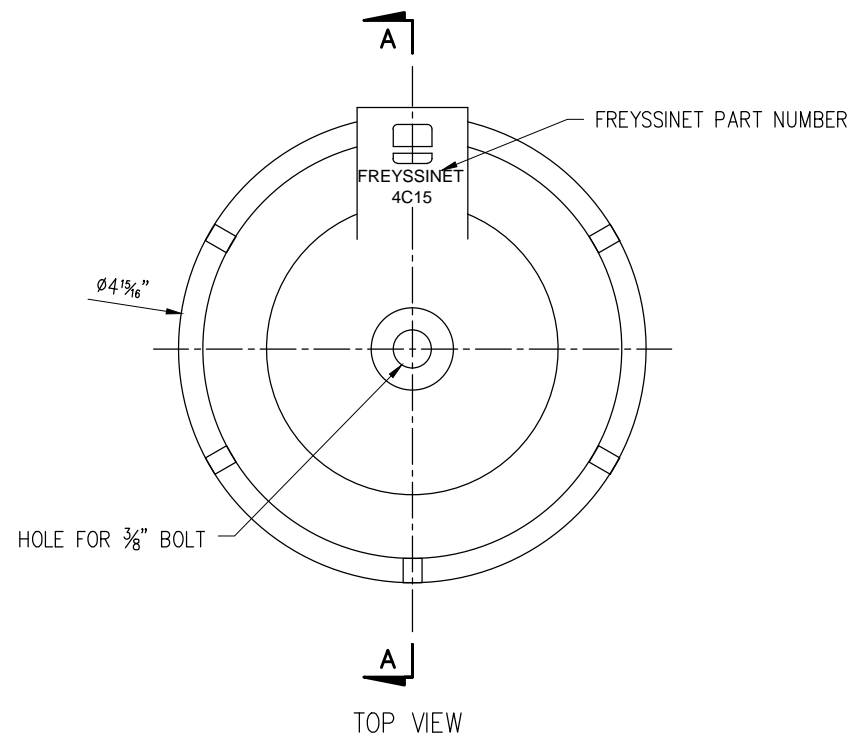


ITEM	DESCRIPTION	MATERIAL	PART # / LABEL
02	4C15 ANCHOR BLOCK (WEDGE PLATE)	STEEL, 4140 QUENCHED AND TEMPERED	AB4C15

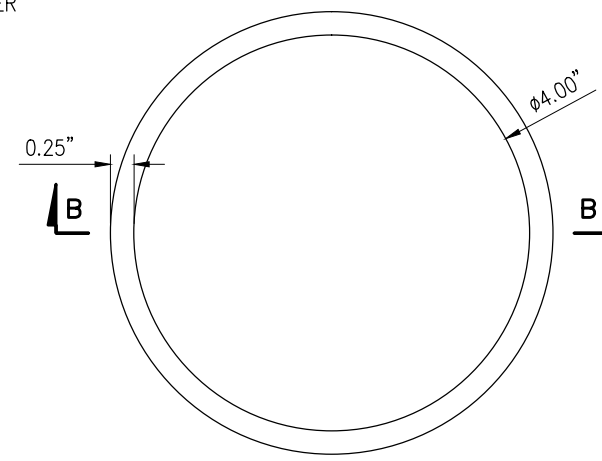
DRAWING TITLE: FREYSSINET 4C15 ANCHOR BLOCK (WEDGE PLATE)		REV: 0	SHEET NO.: 03												
SCALE: DIMENSIONS IN INCHES. DO NOT SCALE THIS DRAWING.		REV. DATE 0 11-26-19 JM TC/SN SN ORIGINAL													
<p>These drawings contain proprietary information restricted solely to this project and may not be reproduced in whole or part without the written expressed permission of FREYSSINET, INC</p> <p>FREYSSINET, INC SUSTAINABLE TECHNOLOGY PHONE: 703-378-2500 WWW.FREYSSINETUSA.COM COPYRIGHT & MODIFICATION RESERVED</p>		<p>MEMBERS OF:</p>													
<p>REVISIONS:</p> <table border="1"> <thead> <tr> <th>REV</th> <th>DATE</th> <th>DRAWN</th> <th>CHECKED</th> <th>APPROVED</th> <th>REVISION DESCRIPTION</th> </tr> </thead> <tbody> <tr> <td>0</td> <td>11-26-19</td> <td>JM</td> <td>TC/SN</td> <td>SN</td> <td>ORIGINAL</td> </tr> </tbody> </table>				REV	DATE	DRAWN	CHECKED	APPROVED	REVISION DESCRIPTION	0	11-26-19	JM	TC/SN	SN	ORIGINAL
REV	DATE	DRAWN	CHECKED	APPROVED	REVISION DESCRIPTION										
0	11-26-19	JM	TC/SN	SN	ORIGINAL										



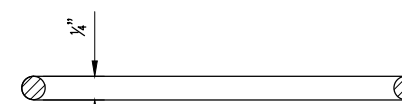
SECTION A-A



TOP VIEW



TOP VIEW



SECTION B-B

O-RING

GROUT CAP

ITEM	DESCRIPTION	MATERIAL	PART # / LABEL
03	4C15 GROUT CAP	NYLON ASTM D5989	CAP4C15
03A	4C15 ANCHORAGE CAP O-RING	HNBR 70, AS PER TABLE 2.2.1.7-1 OF FDOT 960 SPECS	ORNG025X400

NOTE:

- USE O-RING IN GROOVE FOR SEALING AGAINST TRUMPLATE (DWG. FINC-4C15-01)
- USE 3/8" S.S. BOLT ASTM F593
- PRESSURE RATING = 150 psi
- GROUT CAP & O-RING MEET OR EXCEEDS FDOT STANDARD SPECIFICATIONS, SECTION 960

REVISIONS:

REV.	DATE	DRAWN	CHECKED	APPROVED	REVISION DESCRIPTION
1	04-22-20	JM	TG/SN	SN	FDOT SPECIFICATION 960 REVIEW COMMENTS
0	11-26-19	JM	TG/SN	SN	ORIGINAL



FREYSSINET
SUSTAINABLE TECHNOLOGY

FREYSSINET, INC
PHONE: 703-378-2500
WWW.FREYSSINETUSA.COM

COPYRIGHT & MODIFICATION RESERVED

These drawings contain proprietary information restricted solely to this project and may not be reproduced in whole or part without the written expressed permission of FREYSSINET, INC

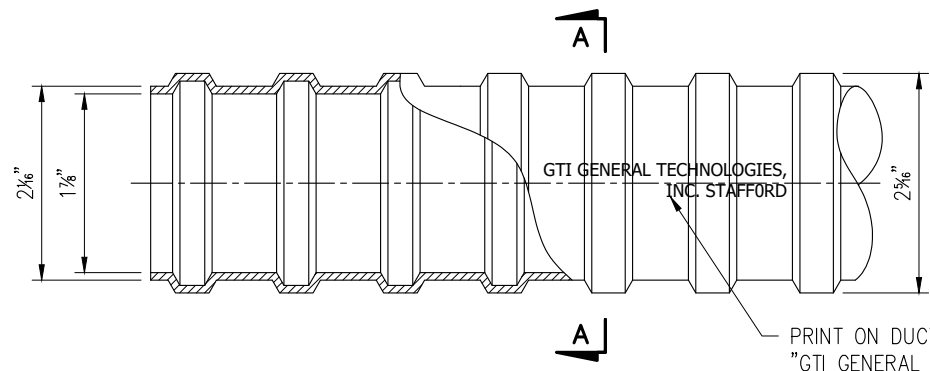
DRAWING TITLE:
FREYSSINET 4C15 GROUT CAP & O-RING

SCALE:
DIMENSIONS IN INCHES. DO NOT SCALE THIS DRAWING.

REV: 0

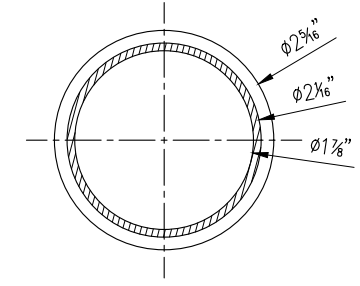
SHEET NO.: 0

FINC-4C15-04



ELEVATION

PRINT ON DUCT:
 "GTI GENERAL TECHNOLOGIES, INC.
 STAFFORD, TEXAS X3F E16 U.S. &
 FOREIGN PATENT PENDING P.N. 220150
 48mm"



SECTION A-A

ITEM	DESCRIPTION	MATERIAL	PART # / LABEL
04	4C15 48mm GTI DUCT	POLYPROPYLENE ASTM D4101	PPD48ID

- NOTE:
- STANDARD FIT FOR 4C15
 - DUCT IS DELIVERED IN STRAIGHT SECTIONS AND IS NOT INTENDED TO BE COILED.
 - DUCT MEETS OR EXCEEDS FDOT STANDARD SPECIFICATIONS, SECTION 960

MINIMUM RADII OF CURVATURE DETERMINED AS PER FIB BULLETIN 75, ANNEX A8			
STRAND NO.	2	3	4
Rmin [FT (m)]	6.6 (2.0)	7.9 (2.4)	9.2 (2.8)

REVISIONS:

REV.	DATE	DRAWN	CHECKED	APPROVED	REVISION DESCRIPTION
1	04-22-20	JM	TC/SN	SN	FDOT SPECIFICATION 960 REVIEW COMMENTS
0	11-26-19	JM	TC/SN	SN	ORIGINAL

MEMBERS OF:

FREYSSINET
 SUSTAINABLE TECHNOLOGY
FREYSSINET, INC
 PHONE: 703-378-2500
 WWW.FREYSSINETUSA.COM
 COPYRIGHT & MODIFICATION RESERVED

These drawings contain proprietary information restricted solely to this project and may not be reproduced in whole or part without the written expressed permission of FREYSSINET, INC

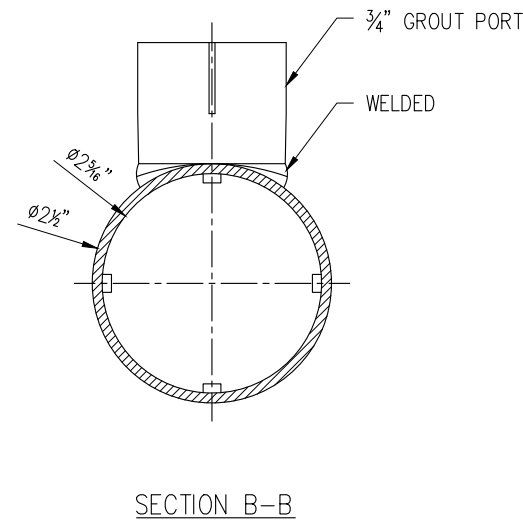
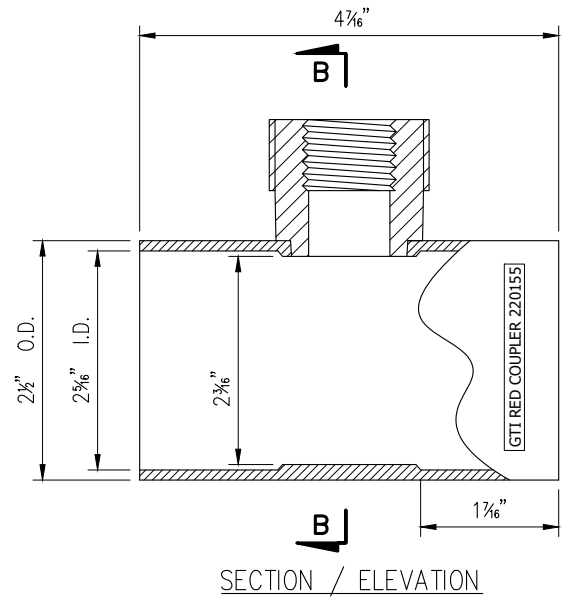
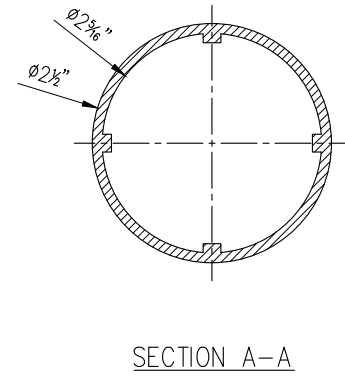
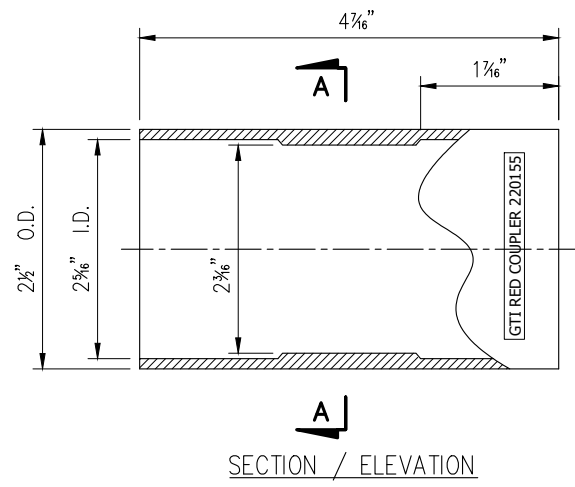
DRAWING TITLE:
4C15 48mm GTI DUCT

SCALE:
DIMENSIONS IN INCHES. DO NOT SCALE THIS DRAWING.

REV: **1**

SHEET NO.: **1**

FINC-4C15-05



ITEM	DESCRIPTION	MATERIAL	PART # / LABEL
05	4C15 48mm GTI SLIP-ON COUPLER W/ OR W/O VENT	POLYPROPYLENE ASTM D4101	PPCOUP48ID

- NOTE:
- STANDARD FIT FOR 48mm DUCT
 - COUPLER MEETS OR EXCEEDS FDOT STANDARD SPECIFICATIONS, SECTION 960

REVISIONS:

REV.	DATE	BY	DESCRIPTION
0	11-26-19	JM	TC/SN



FREYSSINET
SUSTAINABLE TECHNOLOGY
FREYSSINET, INC
PHONE: 703-378-2500
WWW.FREYSSINETUSA.COM
COPYRIGHT & MODIFICATION RESERVED

These drawings contain proprietary information restricted solely to this project and may not be reproduced in whole or part without the written expressed permission of FREYSSINET, INC

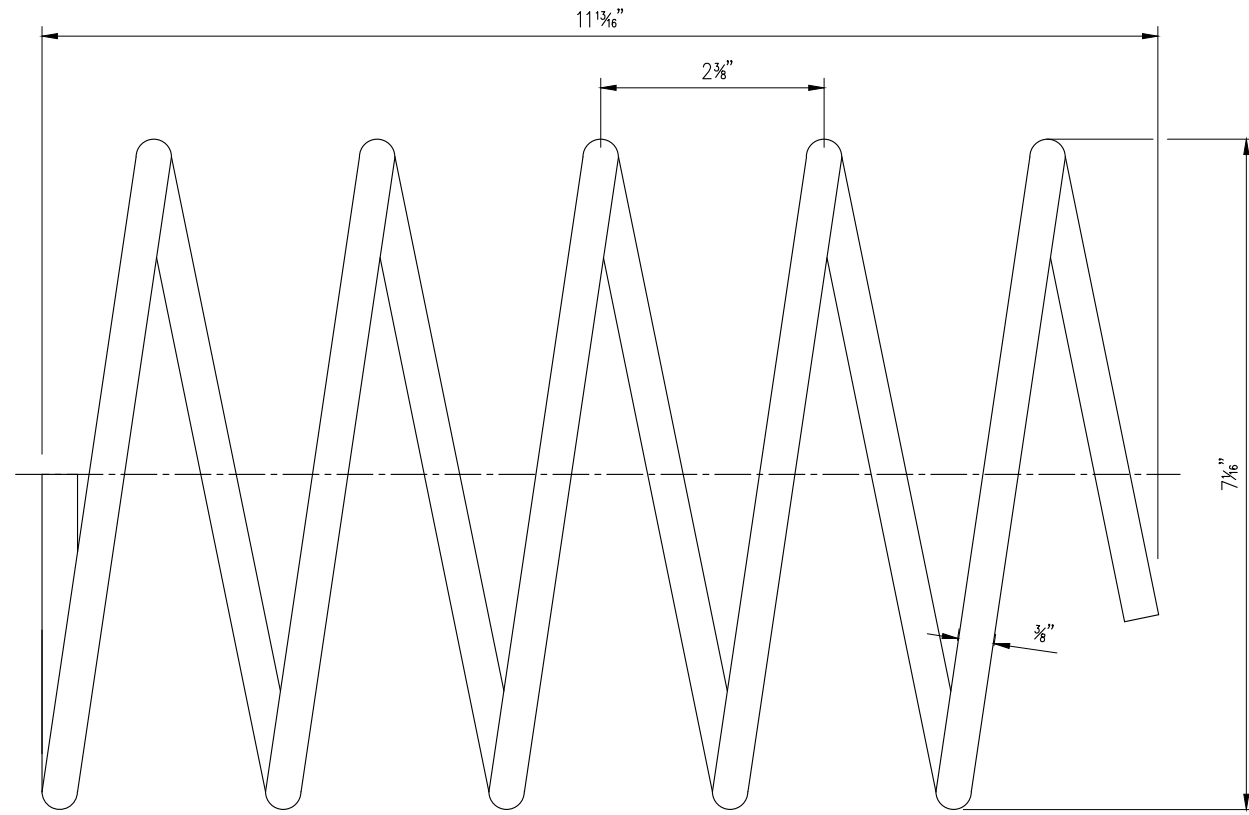
DRAWING TITLE:
4C15 48mm DUCT COUPLER W/ OR W/O VENT

SCALE:
DIMENSIONS IN INCHES. DO NOT SCALE THIS DRAWING.

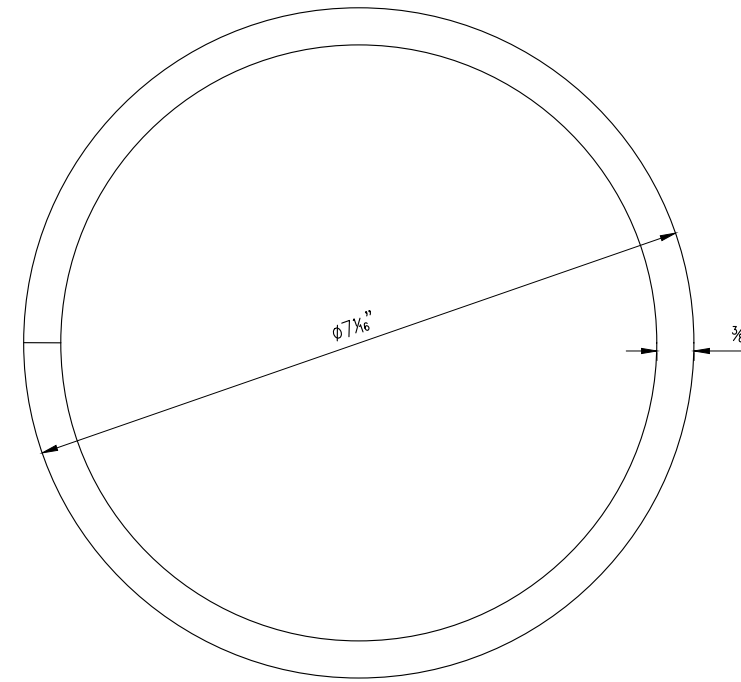
SHEET NO.:
0

REV. NO.:
0

PROJECT NO.:
FINC-4C15-06



ELEVATION

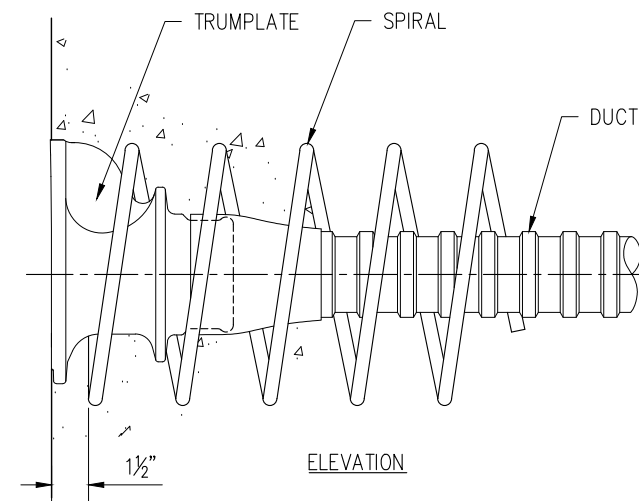


FRONT VIEW

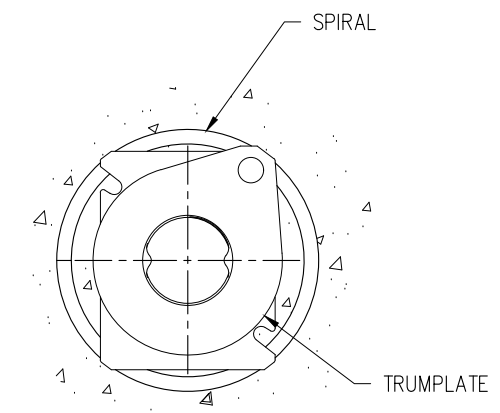
ITEM	DESCRIPTION	MATERIAL	PART # / LABEL
06	4C15 SPIRAL REINFORCEMENT	STEEL GR. 60ksi; ASTM A615	SPIR4C15

- NOTE:
- #3 REBAR
 - 5 TURNS
 - 2 3/8" PITCH
 - ϕ 7 1/16"
 - PROJECT SPECIFIC REQUIREMENTS MAY SUPERCEDE THESE DETAILS.

NOTE:
SPIRAL SHALL BE TIED TO ADJACENT REBARS TO PREVENT ROTATION.



ELEVATION



FRONT VIEW

SPIRAL REINFORCEMENT POSITIONING
(NOT TO SCALE)

REVISIONS:

REV.	DATE	DRAWN	CHECKED	APPROVED	REVISION DESCRIPTION
1	04-22-20	JM	TG/SN	SN	FDOT SPECIFICATION 960 REVIEW COMMENTS
0	11-26-19	JM	TG/SN	SN	ORIGINAL

MEMBERS OF:



FREYSSINET, INC
SUSTAINABLE TECHNOLOGY
FREYSSINET, INC
PHONE: 703-378-2500
WWW.FREYSSINETUSA.COM
COPYRIGHT & MODIFICATION RESERVED

These drawings contain proprietary information restricted solely to this project and may not be reproduced in whole or part without the written expressed permission of FREYSSINET, INC

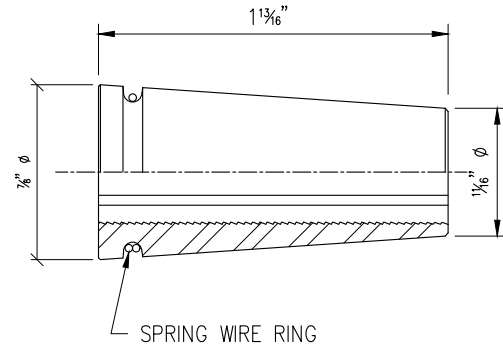
DRAWING TITLE:
4C15 SPIRAL REINFORCEMENT

SCALE:
DIMENSIONS IN INCHES. DO NOT SCALE THIS DRAWING.

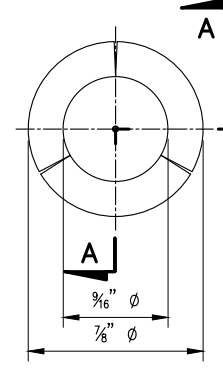
REV: **1**

SHEET NO.: **1**

FINC-4C15-07



SECTION A-A/ ELEVATION



FRONT VIEW

ITEM	DESCRIPTION	MATERIAL	PART # / LABEL
08	C15 ANCHOR WEDGE	STEEL, 12L14 ASTM A240	WEDGE

NOTES:

- NO STAMPED PART NUMBER

REVISIONS:

REV.	DATE	BY	CHKD.	APP'D.	DESCRIPTION
0	11-26-19	JM	TC/SN	SN	ORIGINAL

MEMBERS OF:



FREYSSINET, INC
 PHONE: 703-378-2500
 WWW.FREYSSINETUSA.COM
 COPYRIGHT & MODIFICATION RESERVED

These drawings contain proprietary information restricted solely to this project and may not be reproduced in whole or part without the written expressed permission of FREYSSINET, INC

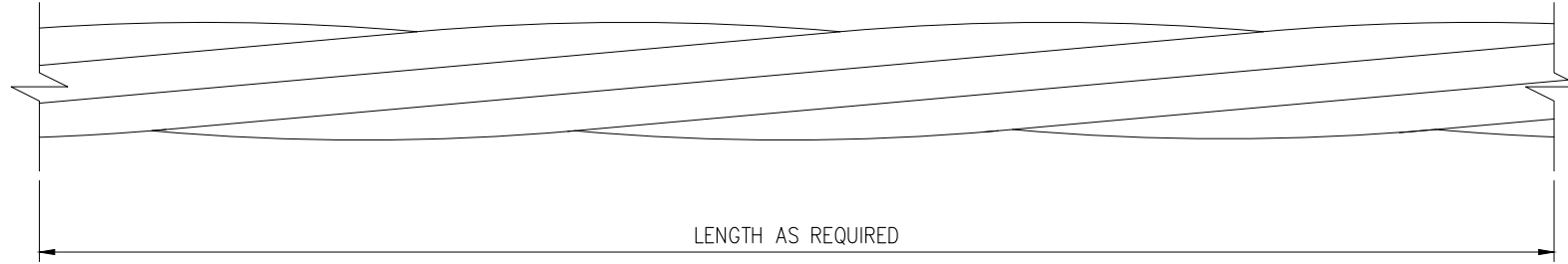
DRAWING TITLE:
3-PART WEDGE FOR 0.6" 7-WIRE STRAND

SCALE: DIMENSIONS IN INCHES. DO NOT SCALE THIS DRAWING.
 REV: 0 SHEET NO.: 0
FINC-4C15-09

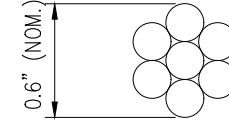
ITEM	DESCRIPTION	MATERIAL	PART # / LABEL
09	0.6" DIA. STRAND	STEEL, LOW RELAX. GR 270 STRAND PER ASTM A416	STRAND

NOTES:

- NO STAMPED PART NUMBER



ELEVATION



SECTION

DRAWING TITLE:

0.6" BARE 270 KSI 7-WIRE STRAND

SCALE:
DIMENSIONS IN
INCHES. DO NOT
SCALE THIS DRAWING.

REV: 0

SHEET NO.:

FINC-4C15-10

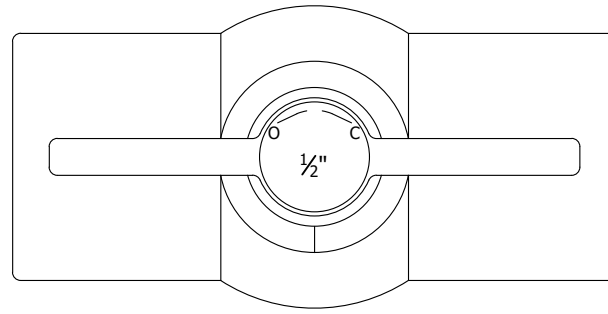
These drawings contain
proprietary information
restricted solely to this
project and may not be
reproduced in whole or
part without the written
expressed permission of
FREYSSINET, INC

FREYSSINET, INC
PHONE: 703-378-2500
WWW.FREYSSINETUSA.COM
COPYRIGHT & MODIFICATION RESERVED

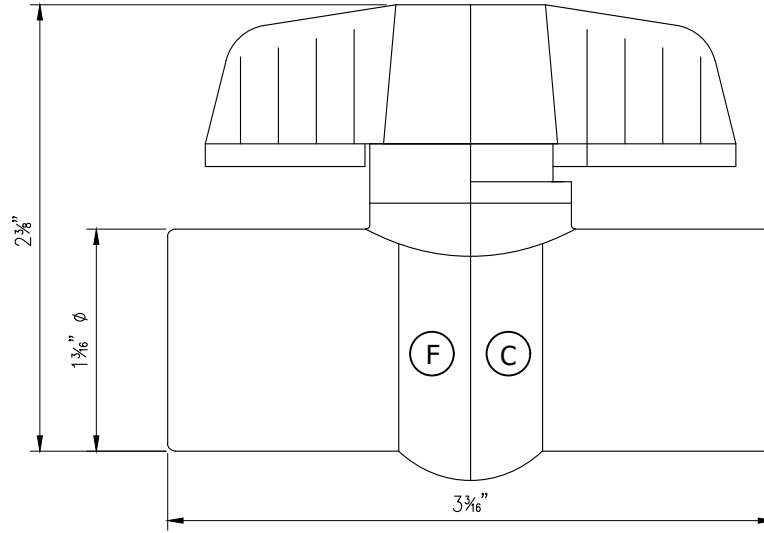
MEMBERS OF:

REVISIONS:

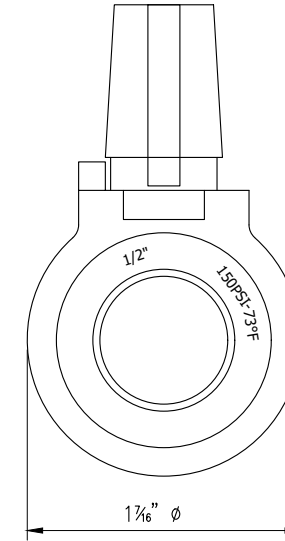
REV.	DATE	BY	CHKD	APP'D	DESCRIPTION
0	11-26-19	JM	TC/SN	SN	ORIGINAL



TOP VIEW



ELEVATION



FRONT VIEW

ITEM	DESCRIPTION	MATERIAL	PART # / LABEL
10*	1/2" NPT BALL VALVE	SCH. 80 PVC, ASTM 2467 (150 PSI RATED)	GBV12

NOTES:

- PRESSURE RATING \geq 150 psi
- 1/2" NPT
- NO STAMPED PART NUMBER
- EXTERNAL DIMENSIONS MAY VARY
- TEMPORARY FITTING

REVISIONS:

REV.	DATE	BY	CHKD.	APP'D.	DESCRIPTION
0	11-26-19	JM	TC/SN	SN	ORIGINAL

MEMBERS OF:



These drawings contain proprietary information restricted solely to this project and may not be reproduced in whole or part without the written expressed permission of FREYSSINET, INC.

DRAWING TITLE:

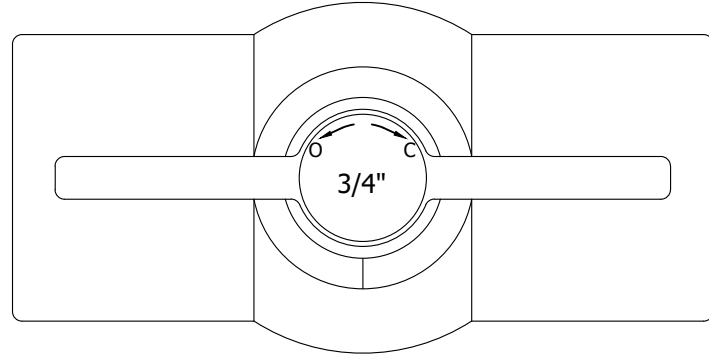
1/2" NPT BALL VALVE (TEMPORARY FITTING)

SCALE: DIMENSIONS IN INCHES. DO NOT SCALE THIS DRAWING.

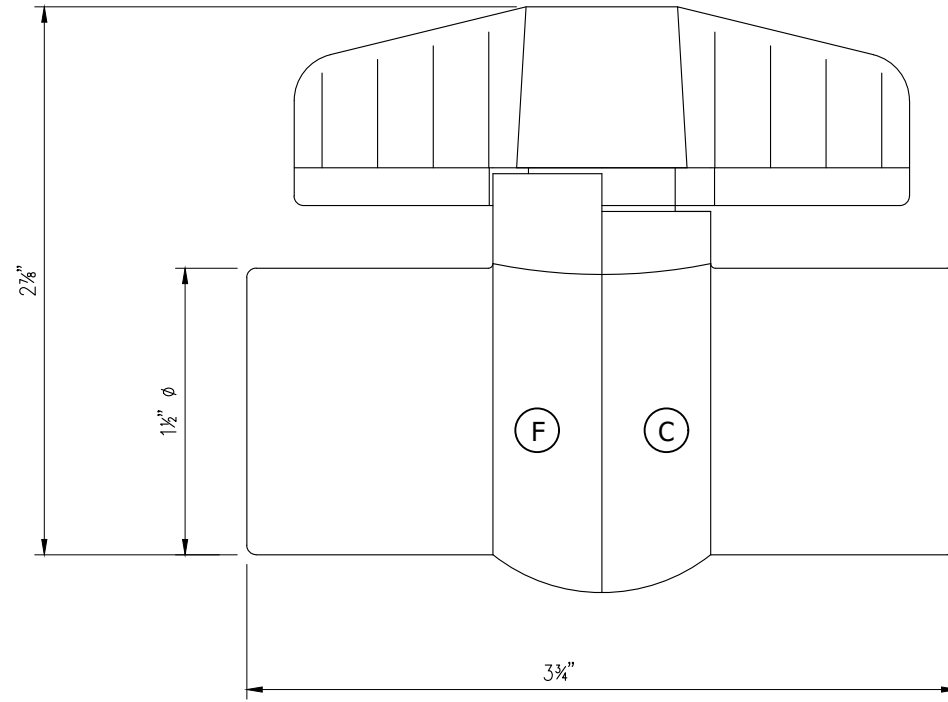
REV: 0

SHEET NO.: 0

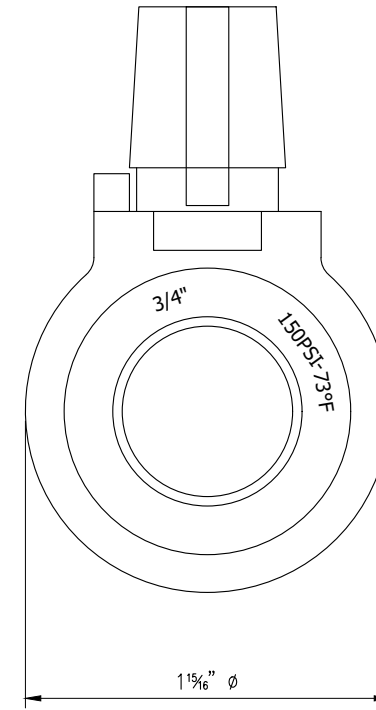
FINC-4C15-11



TOP VIEW



ELEVATION



FRONT VIEW

ITEM	DESCRIPTION	MATERIAL	PART # / LABEL
11*	3/4" NPT BALL VALVE	SCH. 80 PVC, ASTM 2467 (150 PSI RATED)	GBV34

NOTES:

- PRESSURE RATING ≥ 150 psi
- 3/4" NPT
- NO STAMPED PART NUMBER
- EXTERNAL DIMENSIONS MAY VARY
- TEMPORARY FITTING

REVISIONS:

REV.	DATE	BY	CHKD.	APP'D.	DESCRIPTION
0	11-26-19	JM	TC/SN	SN	ORIGINAL

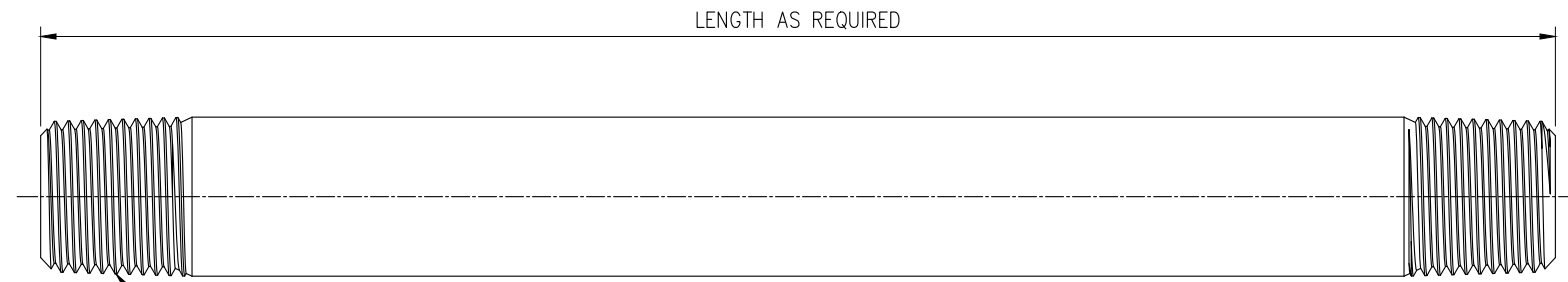
MEMBERS OF:



These drawings contain proprietary information restricted solely to this project and may not be reproduced in whole or part without the written expressed permission of FREYSSINET, INC.

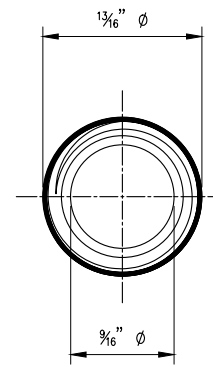
DRAWING TITLE:
3/4" NPT BALL VALVE (TEMPORARY FITTING)

SCALE: DIMENSIONS IN INCHES. DO NOT SCALE THIS DRAWING.
SHEET NO.: 0
FINC-4C15-12



1/2" NPT, 14 THREADS PER INCH
.53" THREAD ENGAGEMENT

ELEVATION



FRONT VIEW

ITEM	DESCRIPTION	MATERIAL	PART # / LABEL
13*	1/2" NPT PIPE NIPPLE	SCH. 80 PVC OR SCH. 40 STEEL (150 PSI RATED)	GNP12

NOTES:

- NO STAMPED PART NUMBER
- PRESSURE RATING ≥150 psi
- 1/2" NPT
- TEMPORARY FITTING

REVISIONS:

REV.	DATE	DRAWN	CHECKED	APPROVED	REVISION DESCRIPTION
1	02-24-20	JM	TC/SN	SN	FDOT SPECIFICATION 960 REVIEW COMMENTS
0	11-26-19	JM	TC/SN	SN	ORIGINAL

MEMBERS OF:



FREYSSINET
SUSTAINABLE TECHNOLOGY

FREYSSINET, INC
PHONE: 703-378-2500
WWW.FREYSSINETUSA.COM
COPYRIGHT & MODIFICATION RESERVED

These drawings contain proprietary information restricted solely to this project and may not be reproduced in whole or part without the written expressed permission of FREYSSINET, INC

DRAWING TITLE:
1/2" NPT PIPE NIPPLE (TEMPORARY FITTING)

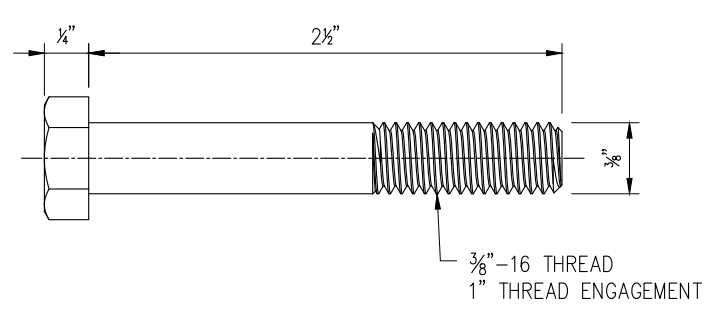
SCALE:
DIMENSIONS IN INCHES. DO NOT SCALE THIS DRAWING.

REV: **1**

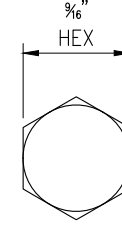
SHEET NO.: **1**

FINC-4C15-13

ITEM	DESCRIPTION	MATERIAL	PART # / LABEL
19	3/8"-16 HEX BOLT (2½" LONG)	316 STAINLESS STEEL ASTM F593	BL38X250



ELEVATION



FRONT VIEW

DRAWING TITLE:

3/8"-16 HEX BOLT

SCALE:
DIMENSIONS IN
INCHES. DO NOT
SCALE THIS DRAWING.

REV: 0

SHEET NO.:

FINC-4C15-14

These drawings contain
proprietary information
restricted solely to this
project and may not be
reproduced in whole or
part without the written
expressed permission of
FREYSSINET, INC

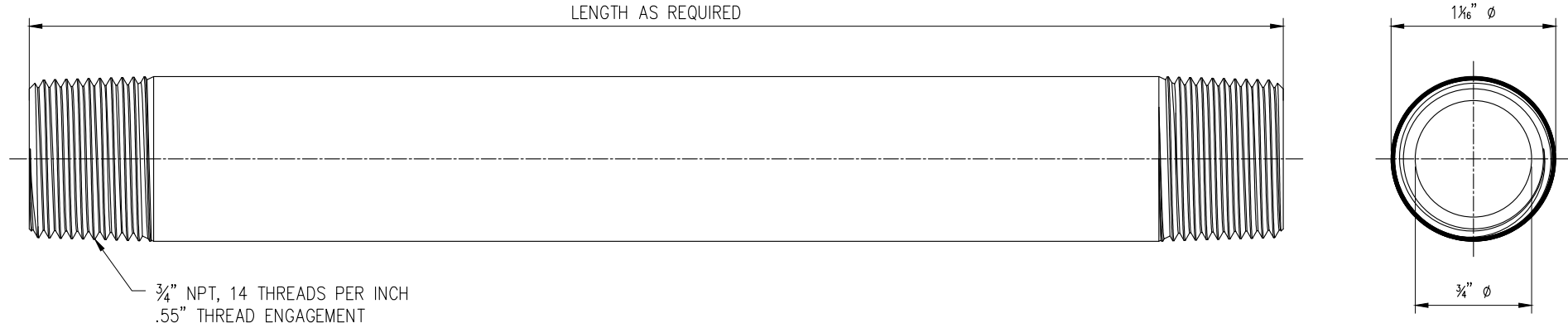

FREYSSINET, INC
 SUSTAINABLE TECHNOLOGY
 PHONE: 703-378-2500
 WWW.FREYSSINETUSA.COM
 COPYRIGHT & MODIFICATION RESERVED

MEMBERS OF:



REVISIONS:

REV.	DATE	DATE	DATE	DATE	DATE	DATE	DATE	DATE	DATE	DATE
0	11-26-19	JM	TC/SN	SN	ORIGINAL					



ITEM	DESCRIPTION	MATERIAL	PART # / LABEL
21	3/4" NPT PE TUBE	HIGH-DENSITY POLYETHYLENE PER ASTM D3350	RGCLP34X100

NOTES:

- NO STAMPED PART NUMBER
- PRESSURE RATING ≥ 150 psi
- 3/4" NPT, MANUALLY THREADED

REVISIONS:

REV.	DATE	BY	DESCRIPTION
0	11-26-19	JM	TC/SN
			CHECKED
			APPROVED
			ORIGINAL

MEMBERS OF:

FREYSSINET, INC
 SUSTAINABLE TECHNOLOGY
 PHONE: 703-378-2500
 WWW.FREYSSINETUSA.COM
 COPYRIGHT & MODIFICATION RESERVED

These drawings contain proprietary information restricted solely to this project and may not be reproduced in whole or part without the written expressed permission of FREYSSINET, INC

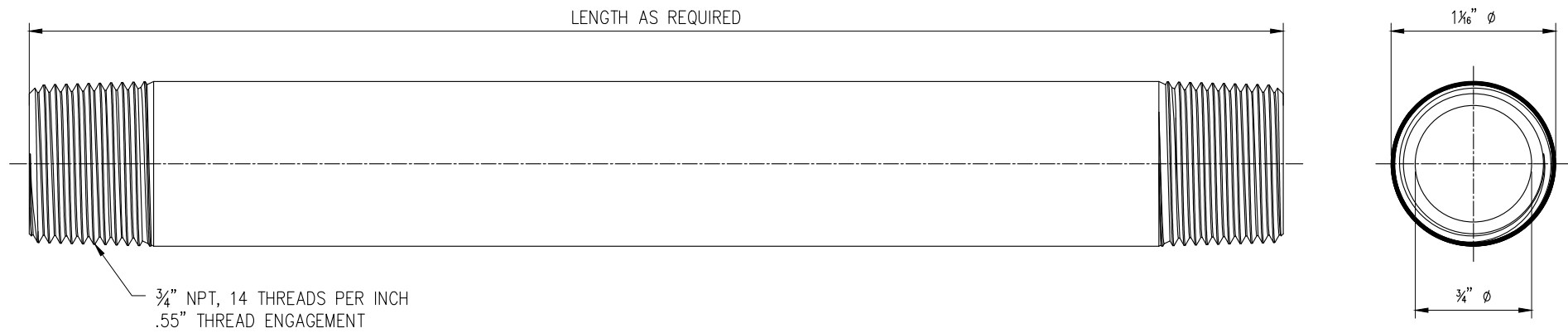
DRAWING TITLE: **3/4" NPT PE TUBE**

SCALE: DIMENSIONS IN INCHES. DO NOT SCALE THIS DRAWING.

REV: **0**

SHEET NO.: **0**

FINC-4C15-16



ITEM	DESCRIPTION	MATERIAL	PART # / LABEL
22*	3/4" NPT PIPE NIPPLE	SCH. 80 PVC OR SCH. 40 STEEL (150 PSI RATED)	GNP34

- NOTES:
- NO STAMPED PART NUMBER
 - PRESSURE RATING ≥150 psi
 - 3/4" NPT
 - TEMPORARY FITTING

REVISIONS:

REV.	DATE	BY	DESCRIPTION
0	11-26-19	JM	TC/SN
			SN
			CHECKED
			APPROVED
			REVISION DESCRIPTION



FREYSSINET, INC
 PHONE: 703-378-2500
 WWW.FREYSSINETUSA.COM
 COPYRIGHT & MODIFICATION RESERVED

These drawings contain proprietary information restricted solely to this project and may not be reproduced in whole or part without the written expressed permission of FREYSSINET, INC

DRAWING TITLE: **3/4" NPT PIPE NIPPLE (TEMPORARY FITTING)**

SCALE: DIMENSIONS IN INCHES. DO NOT SCALE THIS DRAWING.

REV: 0

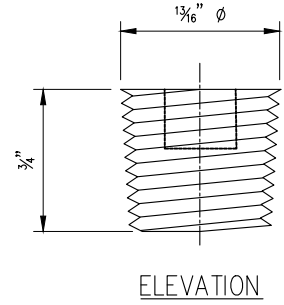
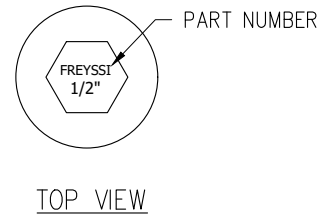
SHEET NO.: 0

FINC-4C15-17

ITEM	DESCRIPTION	MATERIAL	PART # / LABEL
23	1/2" NPT PLUG	NYLON ASTM D5989	GPLG12

NOTES:

- PRESSURE RATING ≥ 150 psi
- PLUG MEETS OR EXCEEDS FDOT STANDARD SPECIFICATIONS, SECTION 960



DRAWING TITLE:

1/2" NPT NYLON PLUG

SCALE:
DIMENSIONS IN
INCHES. DO NOT
SCALE THIS DRAWING.

REV: 0

SHEET NO.:

FINC-4C15-18

These drawings contain
proprietary information
restricted solely to this
project and may not be
reproduced in whole or
part without the written
expressed permission of
FREYSSINET, INC

FREYSSINET, INC
PHONE: 703-378-2500
WWW.FREYSSINETUSA.COM
COPYRIGHT & MODIFICATION RESERVED

MEMBERS OF:

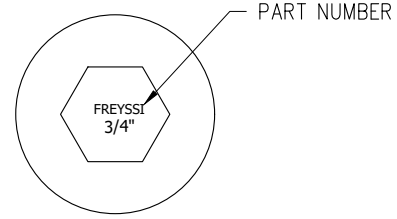
REVISIONS:

REV.	DATE	DRAWN	CHECKED	APPROVED	REVISION DESCRIPTION
0	11-26-19	JM	TC/SN	SN	ORIGINAL

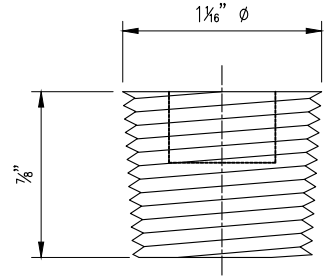
ITEM	DESCRIPTION	MATERIAL	PART # / LABEL
24	3/4" NPT PLUG	NYLON ASTM D5989	GPLG34

NOTES:

- PRESSURE RATING ≥150 psi
- PLUG MEETS OR EXCEEDS FDOT STANDARD SPECIFICATIONS, SECTION 960



TOP VIEW



ELEVATION

DRAWING TITLE:

3/4" NPT NYLON PLUG

SCALE:
DIMENSIONS IN
INCHES. DO NOT
SCALE THIS DRAWING.

REV: 0

SHEET NO.: 0
FINC-4C15-19

These drawings contain proprietary information restricted solely to this project and may not be reproduced in whole or part without the written expressed permission of FREYSSINET, INC



FREYSSINET, INC
SUSTAINABLE TECHNOLOGY
PHONE: 703-378-2500
WWW.FREYSSINETUSA.COM
COPYRIGHT & MODIFICATION RESERVED

MEMBERS OF:




REVISIONS:

REV.	DATE	DATE	DATE	DATE	DATE	DATE	DATE	DATE	DATE
0	11-26-19	JM	TC/SN	SN	ORIGINAL				