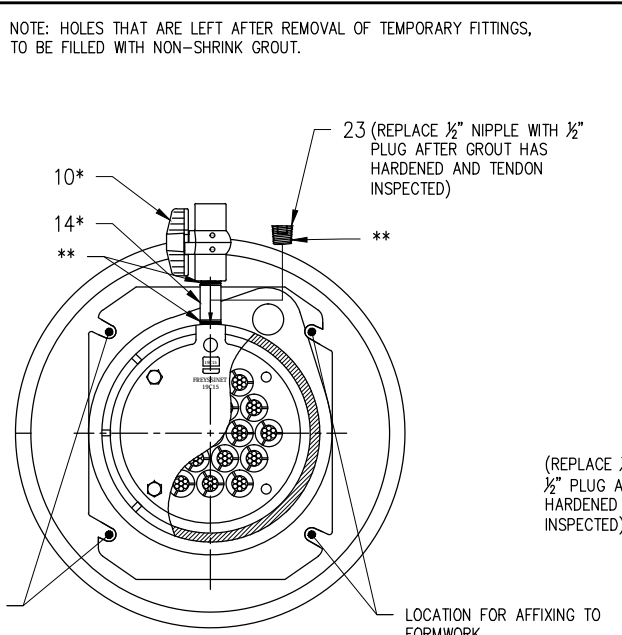
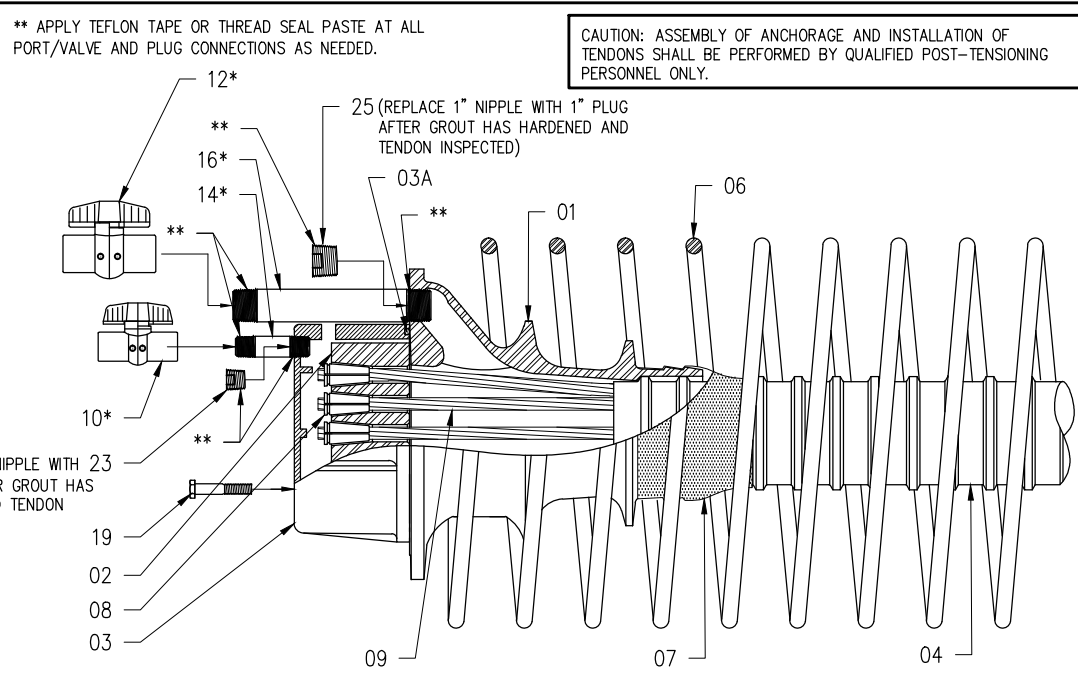


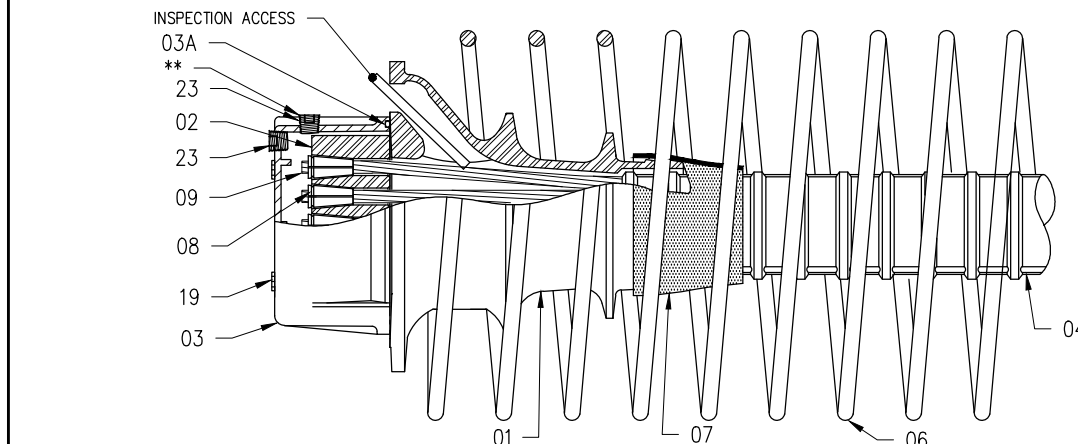
19C15 ASSEMBLY PARTIAL SECTION
GROUTING & INSPECTION FROM TOP



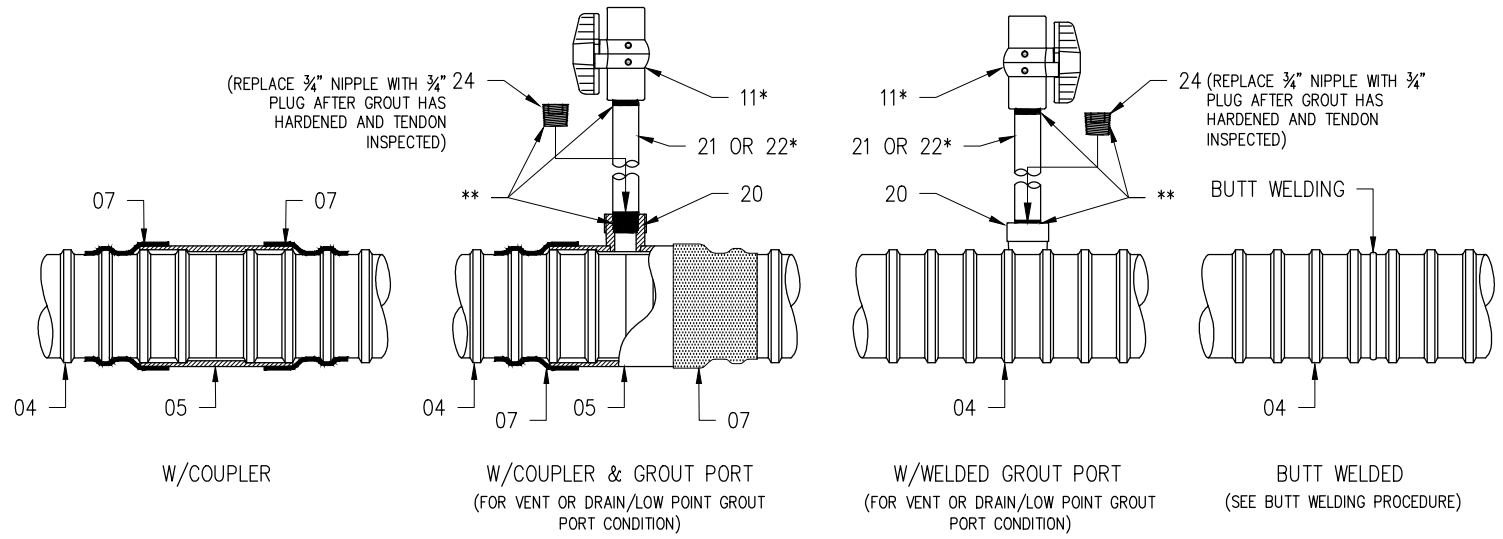
END VIEW



19C15 ASSEMBLY PARTIAL SECTION
GROUT INLET/OUTLET



19C15 ASSEMBLY PARTIAL SECTION
GROUT INSPECTION



INTERMEDIATE CONNECTION DETAILS
SEE INSTALLATION PROCEDURE

- NOTE:
- COMPONENTS MARKED WITH "*" ON THE DRAWING ARE TEMPORARY.
 - PORT AND HOSE ASSEMBLY MAY BE ORIENTED IN ANY REQUIRED DIRECTION TO CREATE A VENT OR A DRAIN.
 - EPOXY GROUT SHALL BE USED TO FILL RECESSES: REFER TO FDOT STANDARD SPECIFICATIONS AND STANDARD INDEX 462-003.
 - CONCRETE COVER MUST MEET FDOT STRUCTURES DESIGN GUIDELINES.

19C15 ASSEMBLY COMPONENTS				
ITEM	DESCRIPTION	MATERIAL	PART # / LABEL	DRAWING
01	19C15 ANCHORAGE (TRUMPLATE)	ASTM A536, GR. 80-55-06, GALV. ASTM A123	TP19C15G	FINC-19C15-02
02	19C15 ANCHOR BLOCK (WEDGE PLATE)	STEEL, 4140 HR	AB19C15	FINC-19C15-03
03	19C15 GROUT CAP	NYLON ASTM D5989	CAP19C15	FINC-19C15-04
03A	19C15 ANCHORAGE CAP O-RING	HNBR 70, AS PER TABLE 2.2.1.7-1 OF FDOT 960 SPECS	ORNGO25X790	FINC-19C15-04
04	19C15 100mm GTI DUCT	POLYPROPYLENE ASTM D4101	PPD100ID	FINC-19C15-05
05	19C15 100mm GTI SLIP-ON COUPLER W/ OR W/O VENT	POLYPROPYLENE ASTM D4101	PCOUP100ID	FINC-19C15-06
06	19C15 SPIRAL REINFORCEMENT	STEEL GR. 60ksi; ASTM A615	SPIR19C15	FINC-19C15-07
07	19C15 HEAT SHRINK SLEEVE (PLA-115-YE)	POLYOLEFIN BACKING W/ ADHESIVE	PLA115X112	FINC-19C15-08
08	C15 ANCHOR WEDGE	STEEL, 12L14 ASTM A240	WEDGE	FINC-19C15-09
09	0.6" DIA. STRAND	STEEL, LOW RELAX. GR 270 STRAND PER ASTM A416	STRAND	FINC-19C15-10
10*	1/2" NPT BALL VALVE	SCH. 80 PVC ASTM 2467 (150 PSI RATED)	GBV12	FINC-19C15-11
11*	3/4" NPT BALL VALVE	SCH. 80 PVC ASTM 2467 (150 PSI RATED)	GBV34	FINC-19C15-12
12*	1" NPT BALL VALVE	SCH. 80 PVC ASTM 2467 (150 PSI RATED)	GBV10	FINC-19C15-13
14*	1/2" NPT PIPE NIPPLE	SCH. 80 PVC OR SCH. 40 STEEL (150 PSI RATED)	GNP12	FINC-19C15-14
16*	1" NPT PIPE NIPPLE	SCH. 80 PVC OR SCH. 40 STEEL (150 PSI RATED)	GNP10	FINC-19C15-15
19	3/8"-16 HEX BOLT (2 1/4" LONG)	316 STAINLESS STEEL ASTM F593	BL38X225	FINC-19C15-16
20	3/4" NPT WELDABLE PORT	POLYPROPYLENE ASTM D4101	34NPTPORT	FINC-19C15-17
21	3/4" NPT PE TUBE	HIGH-DENSITY POLYETHYLENE PER ASTM D3350	RGCLP34X100	FINC-19C15-18
22*	3/4" NPT PIPE NIPPLE	SCH. 80 PVC OR SCH. 40 STEEL (150 PSI RATED)	GNP34	FINC-19C15-19
23	1/2" NPT PLUG	NYLON ASTM D5989	GPLG12	FINC-19C15-20
24	3/4" NPT PLUG	NYLON ASTM D5989	GPLG34	FINC-19C15-21
25	1" NPT PLUG	NYLON ASTM D5989	GPLG10	FINC-19C15-22

- 19C15 INSTALLATION PROCEDURE:**
- NOTE: INSTALLATION PROCEDURE IS GENERIC. FOLLOW SPECIFIC PROJECT REQUIREMENTS & FDOT SPECIFICATIONS.
- LAYOUT EACH TENDON ANCHORAGE AND DUCT LOCATION ACCORDING TO THE SPACING SHOWN ON THE TENDON LAYOUT PLANS.
 - BOLT THE ANCHORAGE TRUMPLATE SECURELY AND PERPENDICULAR TO THE BLOCK-OUT FORM.
 - INDIVIDUAL DUCT LENGTHS SHALL BE COUPLED TOGETHER TO OBTAIN THE CORRECT LENGTH FROM ANCHORAGE TO ANCHORAGE. INSTALL COUPLERS & WELDED GROUT PORTS AS SHOWN ON THESE DRAWINGS AND THE APPLICABLE CONTRACT PLANS.
 - USE HEAT SHRINK SLEEVES TO SEAL DUCT TO DUCT AND DUCT TO TRUMPLATE CONNECTIONS FOLLOWING THE MANUFACTURER'S RECOMMENDED PROCEDURE. CARE MUST BE TAKEN TO AVOID BURNS ON THE DUCT.
 - PLACE ALL REINFORCING STEEL AS SHOWN ON THESE DRAWINGS.
 - PROCEED WITH CONCRETING, TAKING CARE TO NOT DAMAGE OR DISPLACE THE DUCT.
 - PLACE THE CORRECT QUANTITY OF STRAND IN EACH DUCT LEAVING MINIMUM STRESSING TAILS AT EACH END FOR STRESSING EQUIPMENT. THIS CAN BE ACCOMPLISHED BY PUSHING OR PULLING THE STRAND THROUGH THE DUCT.
 - INSTALL THE ANCHOR BLOCK AT EACH END OF THE TRUMPLATE. INSERT THE WEDGES INTO THE ANCHOR BLOCK. MAKE SURE WEDGE CAVITIES ARE CLEAN & FREE OF RUST.
 - PER FDOT SPECIFICATION 462-8.2.1.1, AN AIR PRESSURE TEST IS REQUIRED PRIOR TO CONCRETE PLACEMENT.
 - STRESSING MAY PROCEED ONCE THE CONCRETE HAS REACHED THE REQUIRED COMPRESSIVE STRENGTH AS INDICATED IN THE PLANS AND AS CONFIRMED BY TESTS.

- ALL TENDONS SHALL BE STRESSED BY JACKING FROM ONE OR TWO ENDS IN THE APPROVED SEQUENCE. ONCE APPROVED, CUT STRAND TAILS TO 1.5" MAXIMUM LENGTH.
 - INSTALL GROUT CAPS, INLET AND OUTLET ACCESSORIES.
 - PERFORM DUCT PRESSURE FIELD TEST REQUIRED BY FDOT SPECIFICATIONS.
 - GROUTING SHALL BE PERFORMED IN ACCORDANCE WITH THE LATEST EDITION OF THE PTI GUIDE SPECIFICATIONS FOR GROUTING OF POST TENSIONING STRUCTURES OR APPLICABLE SPECIFICATION.
- VENDOR-SPECIFIC INSTALLATION PROCEDURE FOR WELDING PORT (ITEM #20) TO DUCT:**
- MARK GTI DUCT & DRILL 3/8" (22mm) HOLE IN THE GTI DUCT AND CLEAN HOLE AND GTI WELDED GROUT PORT. WELDED GROUT PORT HOLE REQUIRED TO BE BETWEEN RIBS OF DUCT.
- FOLLOW MANUFACTURER'S REQUIREMENTS FOR PREPARATION OF THE PORT WELDER. SIMULTANEOUSLY, INSERT MALE ADAPTER OF GTI GROUT PORT WELDER INTO DRILLED HOLE IN DUCT AND PLACE GTI WELDED GROUT PORT INTO FEMALE ADAPTER.
- APPLY LIGHT PRESSURE FOR 20-25 SECONDS BY PUSHING THE GTI WELDED GROUT PORT WITH THE PALM OF HAND.
- REMOVE THE PORT WELDER FROM THE DRILLED HOLE AND WITHIN 5 SECONDS, INSERT THE WELDED GROUT PORT UNTIL SHOULDER IS REACHED.
- ALLOW THE GTI DUCT AND GTI WELDED GROUT PORT TO COOL FOR A MINIMUM OF 4 MINUTES. AFTER THE COOLING TIME HAS FINISHED, THE ASSEMBLY CAN BE USED AS REQUIRED.

MEMBERS OF:

These drawings contain proprietary information restricted solely to this project and may not be reproduced in whole or part without the written expressed permission of FREYSSINET, INC.

DRAWING TITLE:
FREYSSINET 19C15 INTERNAL BONDED PT SYSTEM W/100mm ROUND CORRUGATED DUCT ASSEMBLY

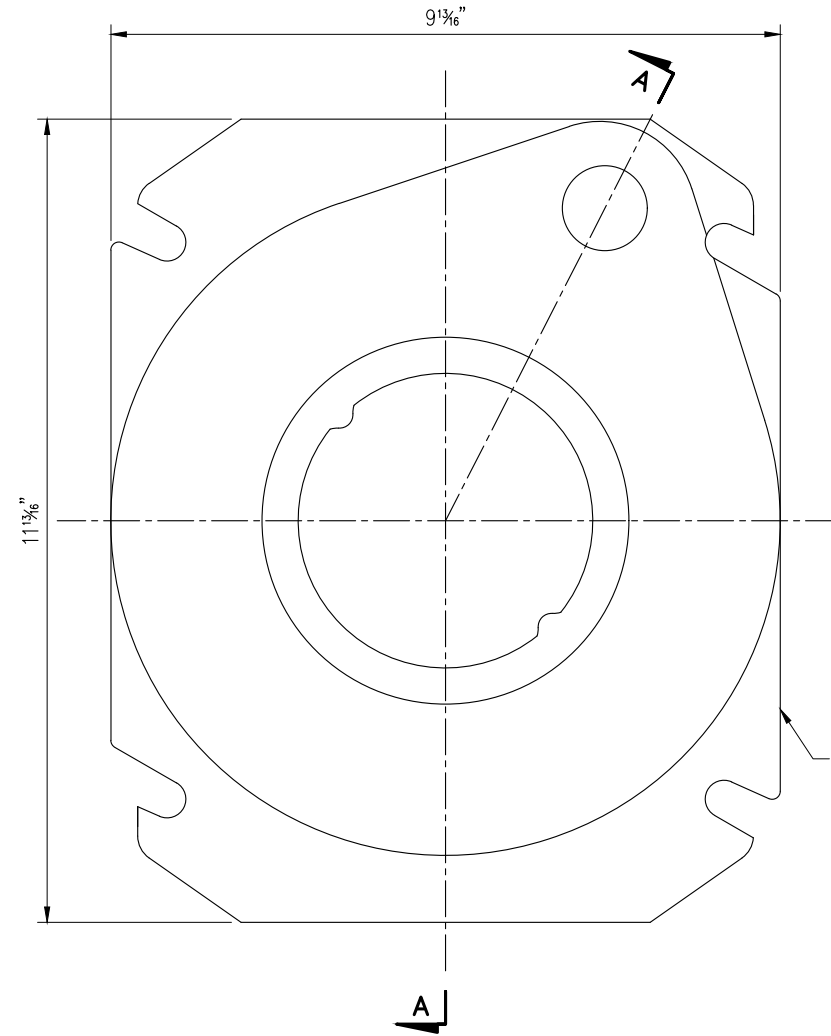
SCALE: DIMENSIONS IN INCHES. DO NOT SCALE THIS DRAWING.

REV: 1

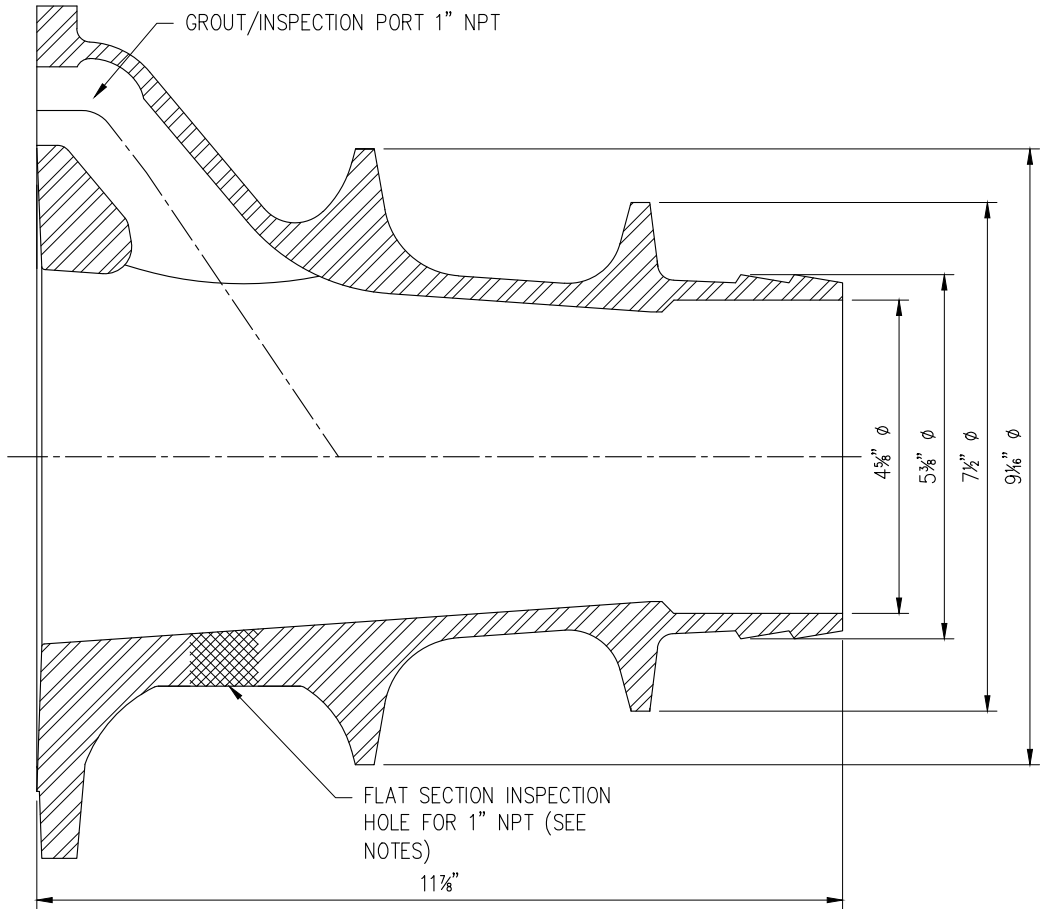
SHEET NO.: 1

PROJECT NO.: FINC-19C15-01

REV.	DATE	DRAWN	CHECKED	APPROVED	REVISION DESCRIPTION	
1	02-24-20	JM	JM	SN	DM	FDOT SPECIFICATION 960 REVIEW COMMENTS ORIGINAL
0	11-26-19	JM	JM	SN	DM	



FRONT VIEW



SECTION A-A

ITEM	DESCRIPTION	MATERIAL	PART # / LABEL
01	19C15 ANCHORAGE (TRUMPLATE)	ASTM A536, GR. 80-55-06, GALV. ASTM A123	TP19C15G

- NOTES:
- FLAT SECTION DRILLED & TAPPED FOR GROUTING & INSPECTION ONLY WHEN THERE IS NO ACCESS TO FRONT OF TRUMPLATE. OTHERWISE LEAVE AS IS. DRILLING & TAPPING SHALL BE COMPLETED PRIOR TO SHIPMENT TO PROJECT.

REVISIONS:

REV.	DATE	BY	DESCRIPTION
1	02-24-20	JM	TC/SN
0	11-26-19	JM	TC/SN

MEMBERS OF:

FREYSSINET, INC
SUSTAINABLE TECHNOLOGY
PHONE: 703-378-2500
WWW.FREYSSINETUSA.COM
COPYRIGHT & MODIFICATION RESERVED

These drawings contain proprietary information restricted solely to this project and may not be reproduced in whole or part without the written expressed permission of FREYSSINET, INC

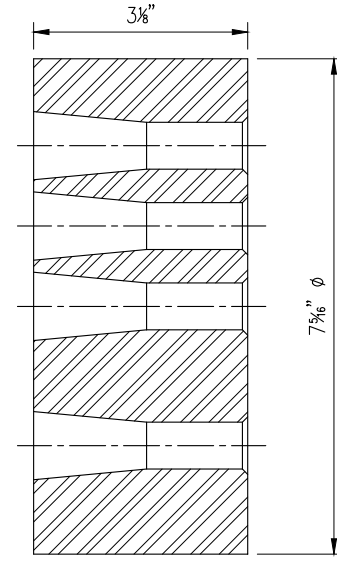
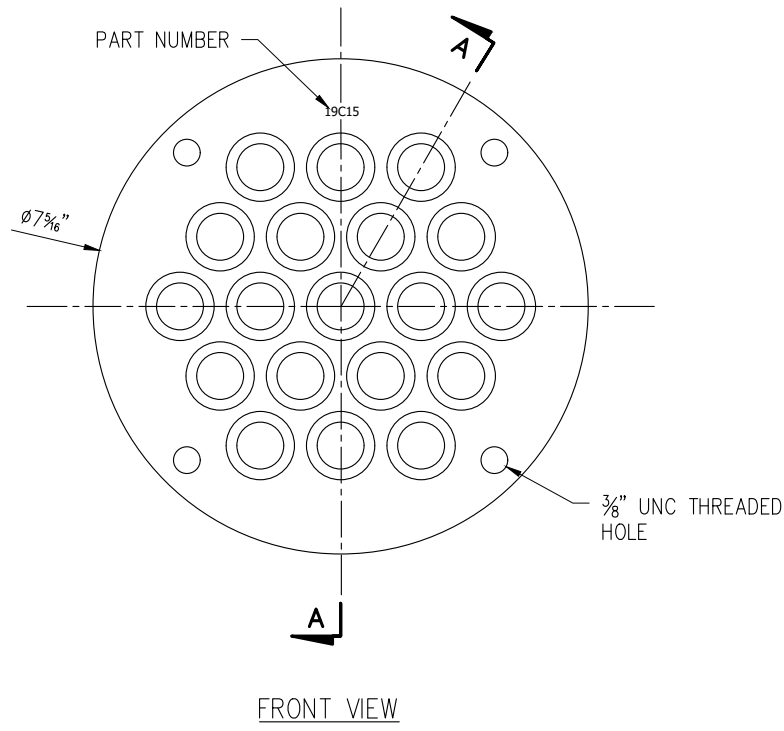
DRAWING TITLE: **FREYSSINET 19C15 ANCHORAGE (TRUMPLATE)**

SCALE: DIMENSIONS IN INCHES. DO NOT SCALE THIS DRAWING.

REV: **1**

SHEET NO.: **1**

PROJECT NO.: **FINC-19C15-02**



ITEM	DESCRIPTION	MATERIAL	PART # / LABEL
02	19C15 ANCHOR BLOCK (WEDGE PLATE)	STEEL, 4140 HR	AB19C15

DRAWING TITLE:

FREYSSINET 19C15 ANCHOR BLOCK (WEDGE PLATE)

SCALE:
DIMENSIONS IN
INCHES. DO NOT
SCALE THIS DRAWING.

REV. 0

SHEET NO.:

0 FINC-19C15-03

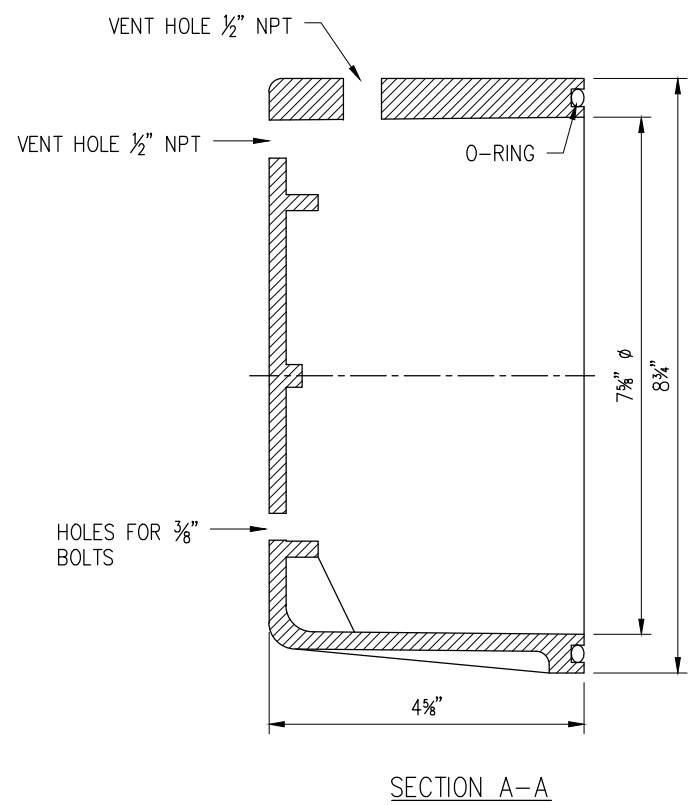
These drawings contain
proprietary information
restricted solely to this
project and may not be
reproduced in whole or
part without the written
expressed permission of
FREYSSINET, INC

FREYSSINET, INC
SUSTAINABLE TECHNOLOGY
PHONE: 703-378-2500
WWW.FREYSSINETUSA.COM
COPYRIGHT & MODIFICATION RESERVED

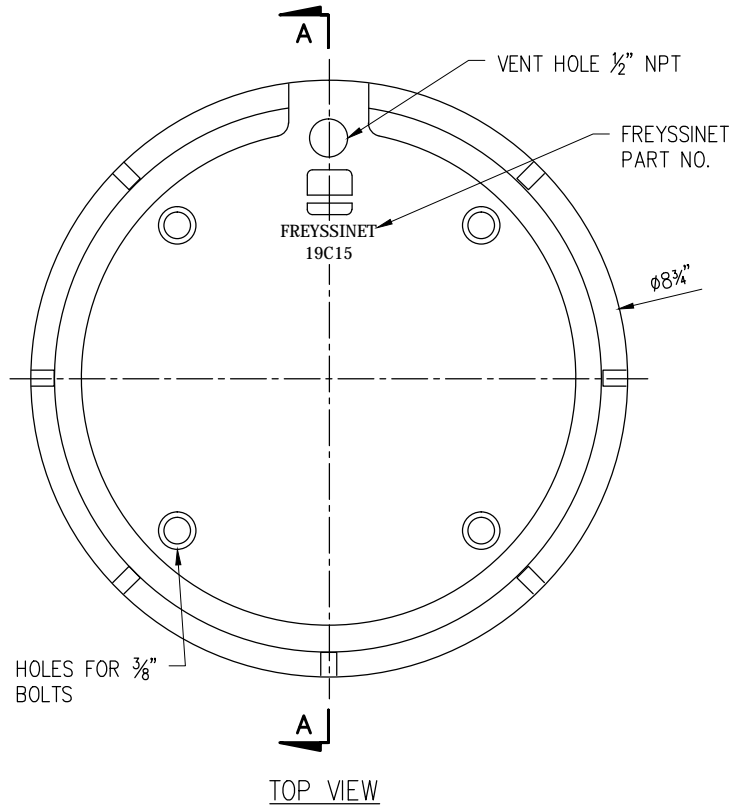
MEMBERS OF:
ASPI
PCI

REVISIONS:

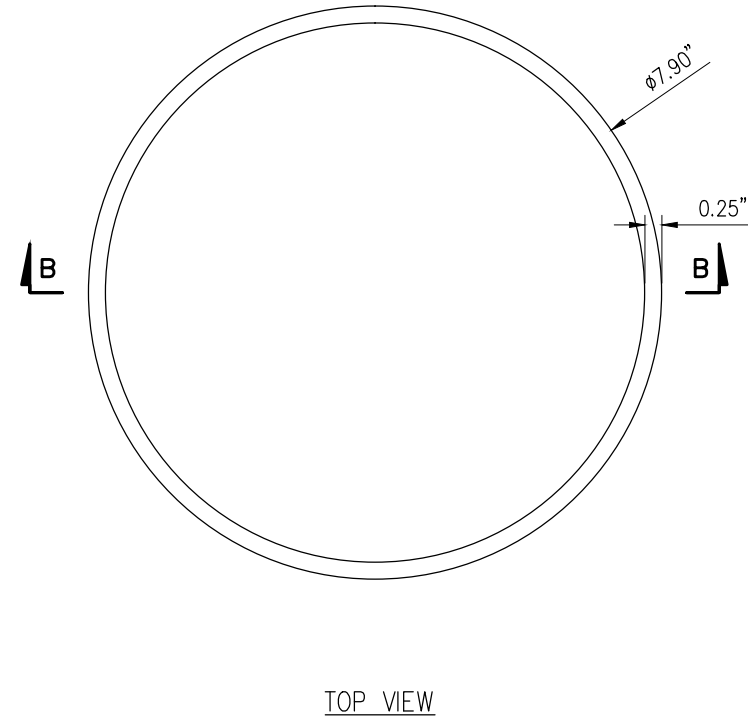
REV.	DATE	BY	DESCRIPTION
0	11-26-19	JM	TC/SN SN ORIGINAL



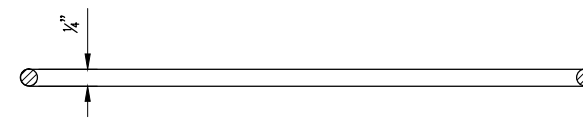
SECTION A-A



TOP VIEW



TOP VIEW



SECTION B-B

GROUT CAP

O-RING

ITEM	DESCRIPTION	MATERIAL	PART # / LABEL
03	19C15 GROUT CAP	NYLON ASTM D5989	CAP19C15
03A	19C15 ANCHORAGE CAP O-RING	HNBR 70, AS PER TABLE 2.2.1.7-1 OF FDOT 960 SPECS	ORNG025X790

NOTE:

- USE O-RING IN GROOVE FOR SEALING AGAINST TRUMPLATE (DWG. FINC-19C15-01)
- USE 3/8" S.S. BOLT ASTM F593
- PRESSURE RATING = 150 psi
- GROUT CAP & O-RING MEET OR EXCEEDS FDOT STANDARD SPECIFICATIONS, SECTION 960

REVISIONS:

REV.	DATE	BY	CHKD	APP'D	DESCRIPTION
0	11-26-19	JM			ORIGINAL

MEMBERS OF:

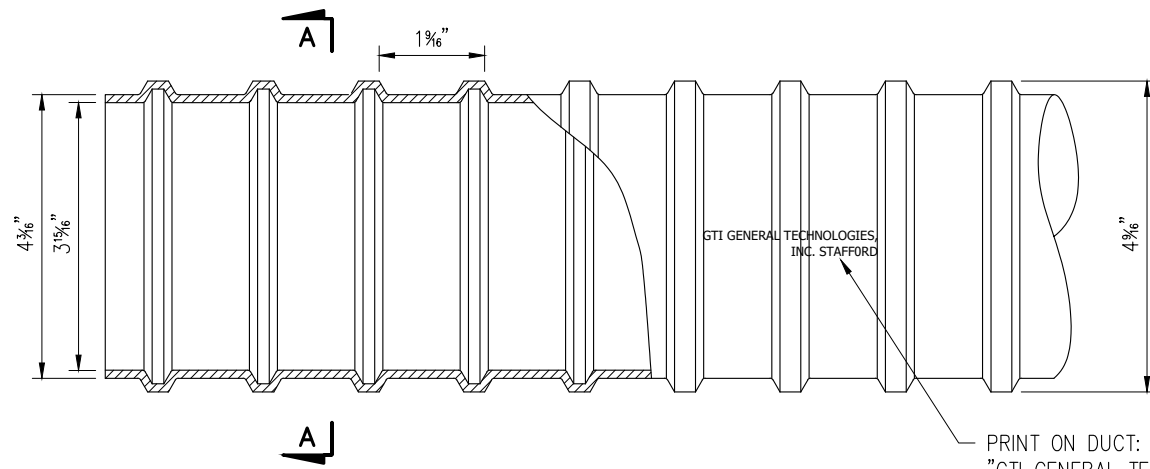


FREYSSINET
SUSTAINABLE TECHNOLOGY
FREYSSINET, INC
PHONE: 703-578-2500
WWW.FREYSSINETUSA.COM
COPYRIGHT & MODIFICATION RESERVED

These drawings contain proprietary information restricted solely to this project and may not be reproduced in whole or part without the written expressed permission of FREYSSINET, INC

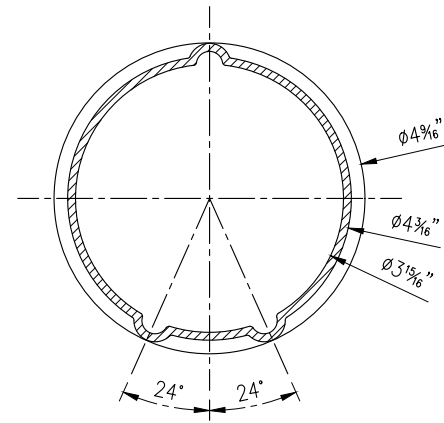
DRAWING TITLE:
FREYSSINET 19C15 GROUT CAP & O-RING

SCALE: DIMENSIONS IN INCHES. DO NOT SCALE THIS DRAWING.
REV: 0
SHEET NO.: 0
FINC-19C15-04



ELEVATION

PRINT ON DUCT:
 "GTI GENERAL TECHNOLOGIES, INC.
 STAFFORD, TEXAS X3F U.S. &
 FOREIGN PATENT PENDING P.N.
 220410"



SECTION A-A

ITEM	DESCRIPTION	MATERIAL	PART # / LABEL
04	19C15 100mm GTI DUCT	POLYPROPYLENE ASTM D4101	PPD100ID

NOTE:

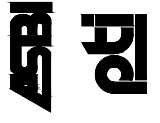
- STANDARD FIT FOR 19C15
- DUCT IS DELIVERED IN STRAIGHT SECTIONS AND IS NOT INTENDED TO BE COILED.
- DUCT MEETS OR EXCEEDS FDOT STANDARD SPECIFICATIONS, SECTION 960

MINIMUM RADII OF CURVATURE DETERMINED AS PER FIB BULLETIN 75, ANNEX A8					
STRAND NO.	15	16	17	18	19
Rmin [FT (m)]	20.5 (6.25)	21.3 (6.48)	22.0 (6.72)	22.8 (6.96)	23.6 (7.19)

REVISIONS:

REV.	DATE	BY	CHKD.	DESCRIPTION	
1	02-24-20	JM	TG/SN	SN	FDOT SPECIFICATION 960 REVIEW COMMENTS
0	11-26-19	JM	TG/SN	SN	ORIGINAL

MEMBERS OF:



FREYSSINET
 SUSTAINABLE TECHNOLOGY
 FREYSSINET, INC.
 PHONE: 703-378-2500
 WWW.FREYSSINETUSA.COM
 COPYRIGHT & MODIFICATION RESERVED

These drawings contain proprietary information restricted solely to this project and may not be reproduced in whole or part without the written expressed permission of FREYSSINET, INC.

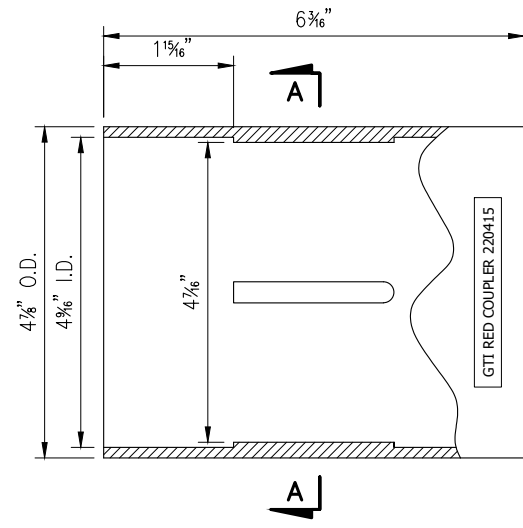
DRAWING TITLE:
19C15 100mm GTI DUCT

SCALE:
DIMENSIONS IN INCHES. DO NOT SCALE THIS DRAWING.

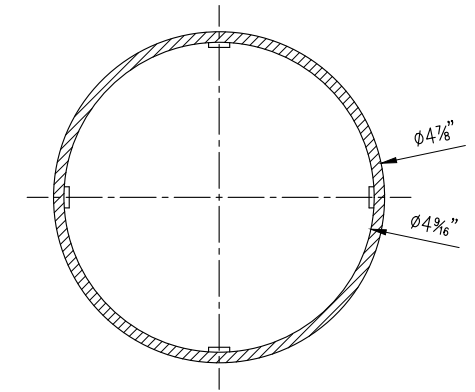
REV. **1**

SHEET NO.: **1**

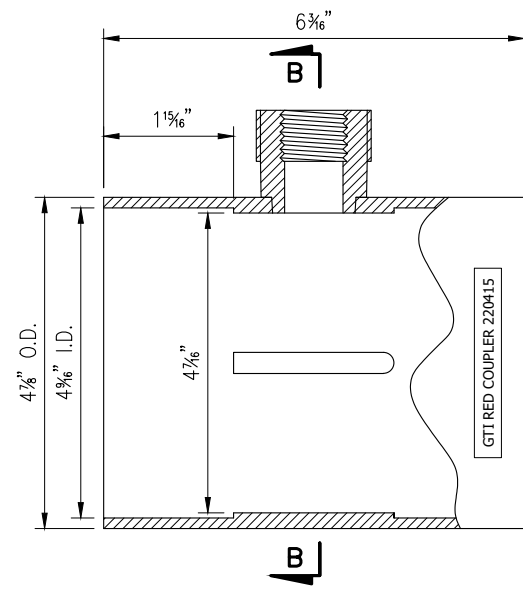
FINC-19C15-05



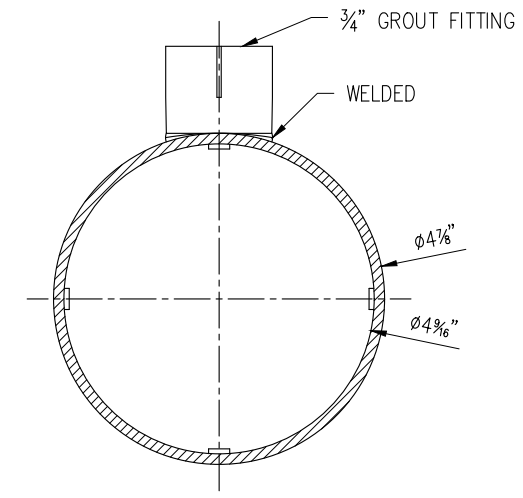
SECTION / ELEVATION



SECTION A-A



SECTION / ELEVATION



SECTION B-B

ITEM	DESCRIPTION	MATERIAL	PART # / LABEL
05	19C15 100mm GTI SLIP-ON COUPLER W/ OR W/O VENT	POLYPROPYLENE ASTM D4101	PCOUP100ID

- NOTE:
- STANDARD FIT FOR 100mm DUCT
 - COUPLER MEETS OR EXCEEDS FDOT STANDARD SPECIFICATIONS, SECTION 960

REVISIONS:

REV.	DATE	BY	DESCRIPTION
0	11-26-19	JM	TC/SN

MEMBERS OF:

FREYSSINET, INC
SUSTAINABLE TECHNOLOGY
PHONE: 703-378-2500
WWW.FREYSSINETUSA.COM
COPYRIGHT & MODIFICATION RESERVED

These drawings contain proprietary information restricted solely to this project and may not be reproduced in whole or part without the written expressed permission of FREYSSINET, INC

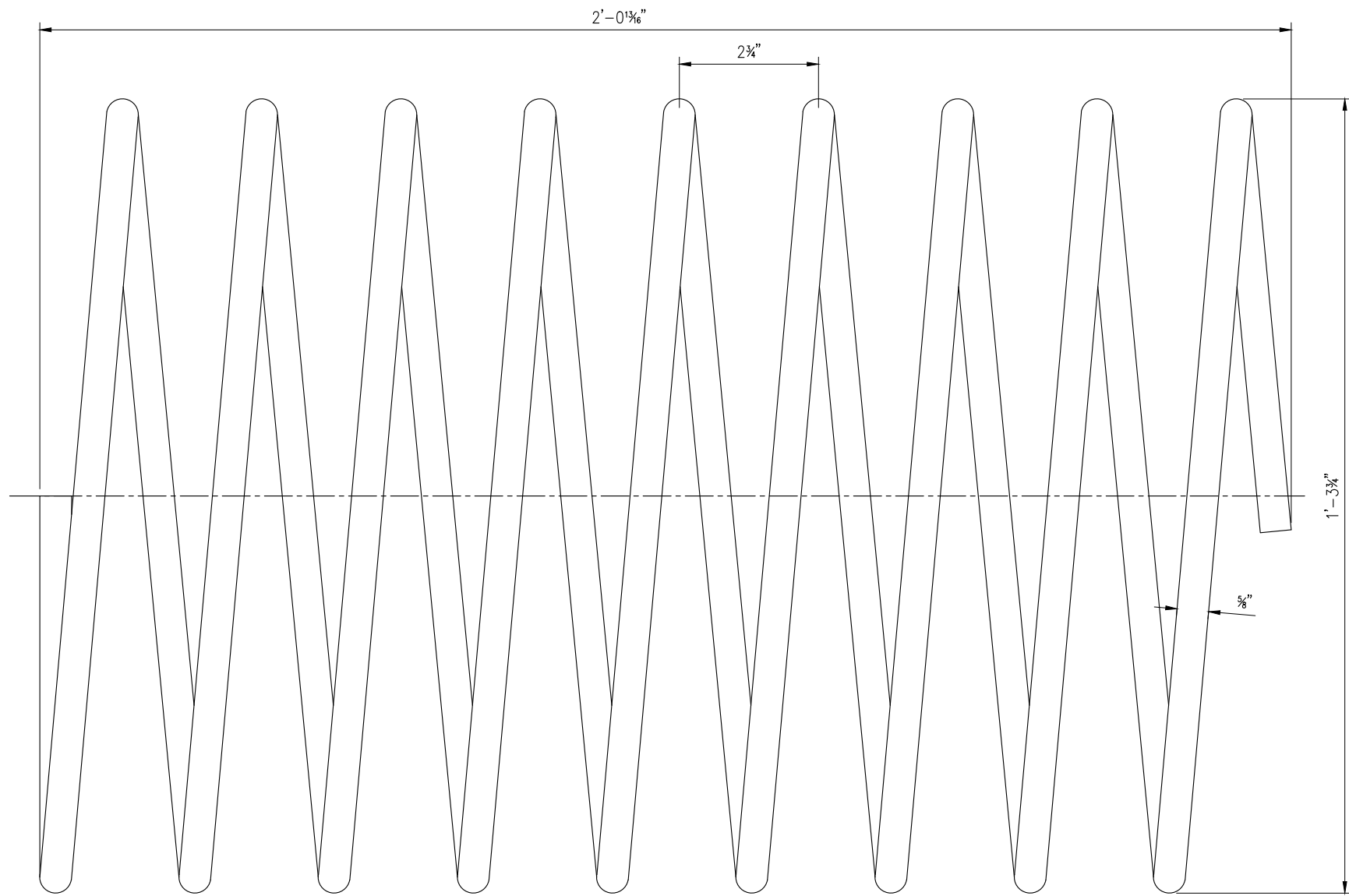
DRAWING TITLE:
19C15 100mm DUCT COUPLER W/ OR W/O VENT

SCALE:
DIMENSIONS IN INCHES. DO NOT SCALE THIS DRAWING.

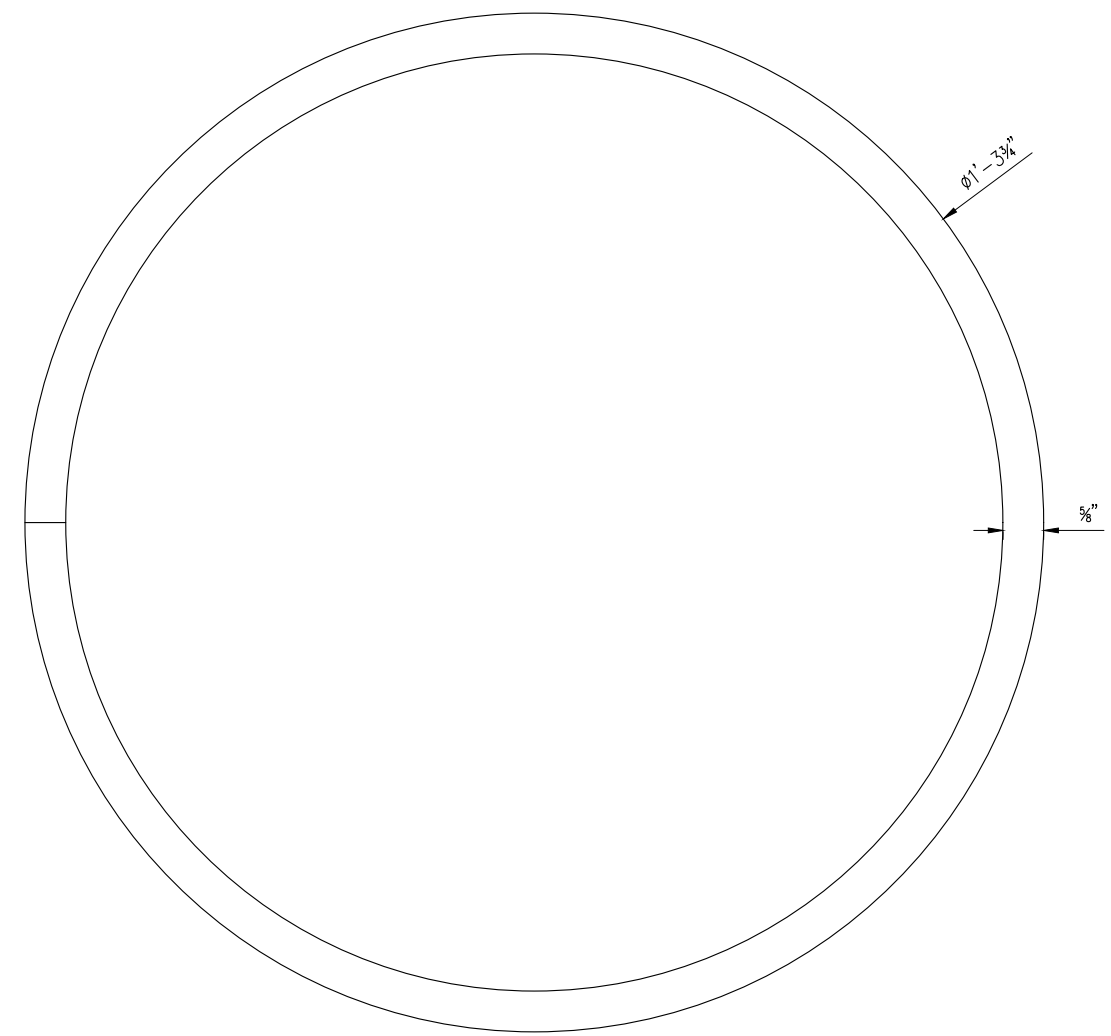
SHEET NO.:
0

REV. NO.:
0

PROJECT NO.:
FINC-19C15-06



ELEVATION

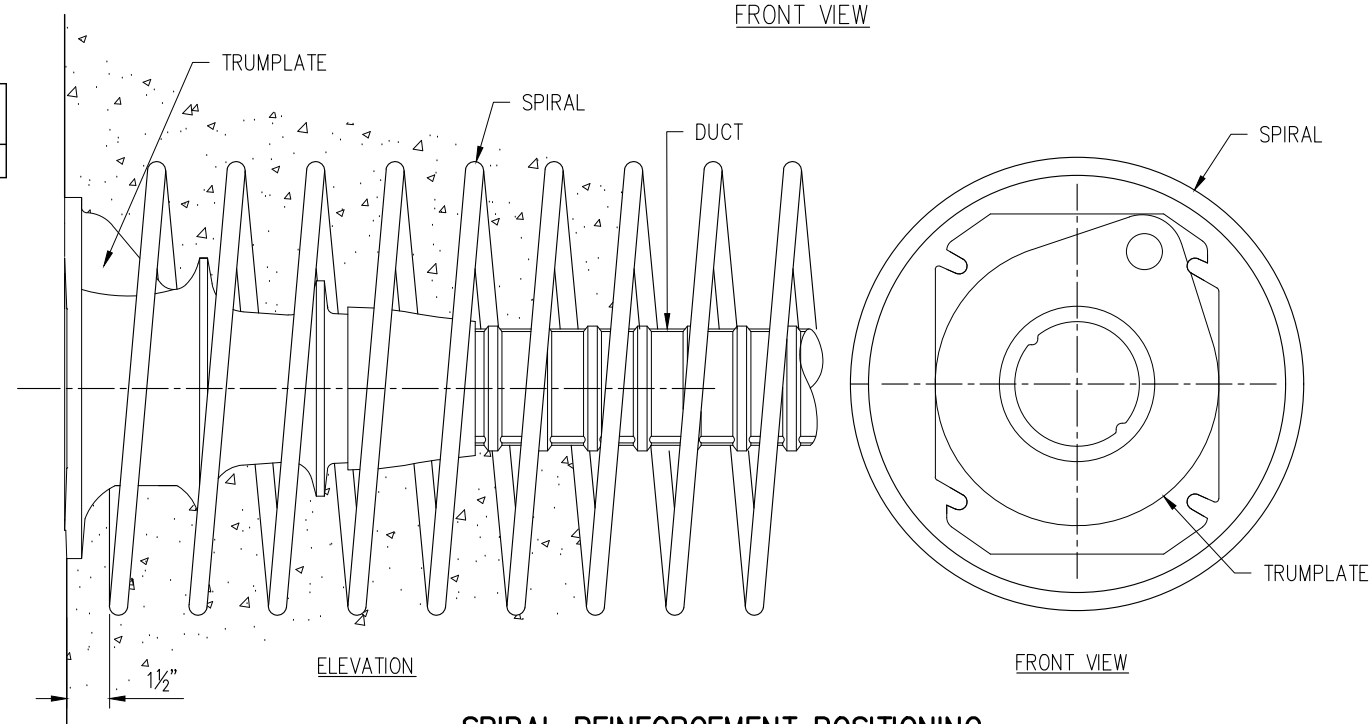


FRONT VIEW

ITEM	DESCRIPTION	MATERIAL	PART # / LABEL
06	19C15 SPIRAL REINFORCEMENT	STEEL GR. 60ksi; ASTM A615	SPIR19C15

- NOTES:
- #5 REBAR
 - 9 TURNS
 - 2.76" PITCH
 - ϕ 15.74"
 - PROJECT SPECIFIC REQUIREMENTS MAY SUPERCEDE THESE DETAILS.

NOTE:
SPIRAL SHALL BE TIED TO ADJACENT REBARS TO PREVENT ROTATION.



ELEVATION

FRONT VIEW

SPIRAL REINFORCEMENT POSITIONING
(NOT TO SCALE)

REVISIONS:

REV.	DATE	BY	CHKD.	APP'D.	REVISION DESCRIPTION
1	02-24-20	JM		SN	FDOT SPECIFICATION 960 REVIEW COMMENTS
0	11-26-19	JM		SN	ORIGINAL

MEMBERS OF:

FREYSSINET, INC.
SUSTAINABLE TECHNOLOGY
PHONE: 703-378-2500
WWW.FREYSSINETUSA.COM
COPYRIGHT & MODIFICATION RESERVED

These drawings contain proprietary information restricted solely to this project and may not be reproduced in whole or part without the written expressed permission of FREYSSINET, INC.

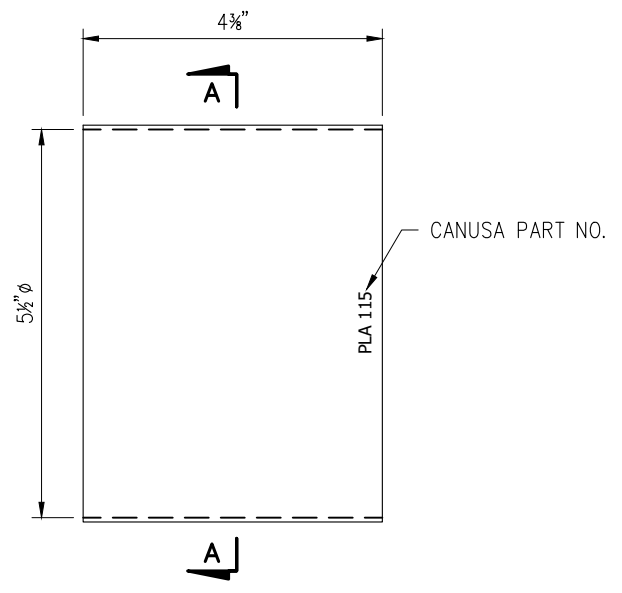
DRAWING TITLE:
19C15 SPIRAL REINFORCEMENT

SCALE:
DIMENSIONS IN INCHES. DO NOT SCALE THIS DRAWING.

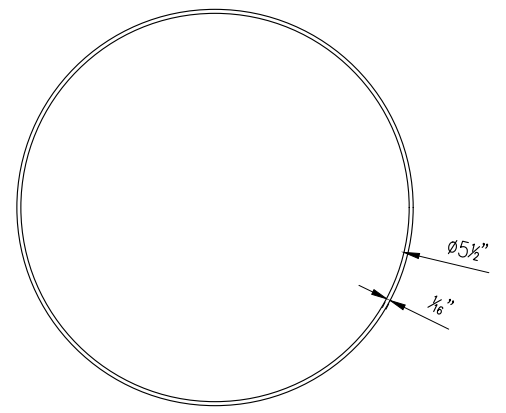
REV. 1

SHEET NO.: 1

PROJECT NO.: **FINC-19C15-07**



ELEVATION



SECTION A-A

ITEM	DESCRIPTION	MATERIAL	PART # / LABEL
07	19C15 HEAT SHRINK SLEEVE (PLA-115-YE)	POLYOLEFIN BACKING W/ ADHESIVE	PLA115X112

- NOTE:
- TUBULAR SLEEVE DIAMETER: 5.5" [145mm] AS SUPPLIED
3.8" [98mm] FULLY RECOVERED
 - HEAT SHRINK SLEEVE MEETS OR EXCEEDS FDOT STANDARD SPECIFICATIONS, SECTION 960
 - INSTALLATION TO BE PERFORMED ACCORDING TO MANUFACTURER'S INSTRUCTIONS.

REVISIONS:

REV.	DATE	BY	DESCRIPTION
0	11-26-19	JM	TC/SN
			CHECKED
			APPROVED
			SN
			ORIGINAL

MEMBERS OF:

FREYSSINET, INC
 PHONE: 703-378-2500
 WWW.FREYSSINETUSA.COM
 COPYRIGHT & MODIFICATION RESERVED

These drawings contain proprietary information restricted solely to this project and may not be reproduced in whole or part without the written expressed permission of FREYSSINET, INC

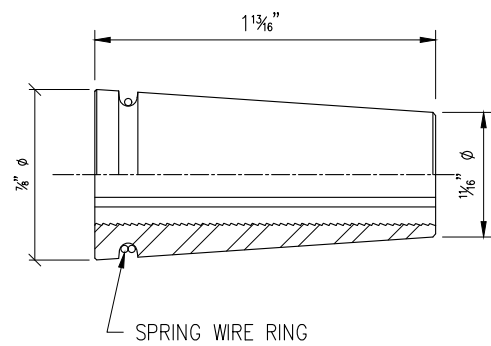
DRAWING TITLE: 19C15 HEAT SHRINK SLEEVE (PLA-115-YE)

SCALE: DIMENSIONS IN INCHES. DO NOT SCALE THIS DRAWING.

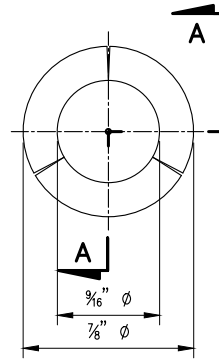
REV: 0

SHEET NO.: 0

FINC-19C15-08



SECTION A-A/ ELEVATION



FRONT VIEW

ITEM	DESCRIPTION	MATERIAL	PART # / LABEL
08	C15 ANCHOR WEDGE	STEEL, 12L14 ASTM A240	WEDGE

- NOTES:
- NO STAMPED PART NUMBER

DRAWING TITLE:

3-PART WEDGE FOR 0.6" 7-WIRE STRAND

SCALE:
DIMENSIONS IN
INCHES. DO NOT
SCALE THIS DRAWING.

REV: 0

SHEET NO.:

0 FINC-19C15-09

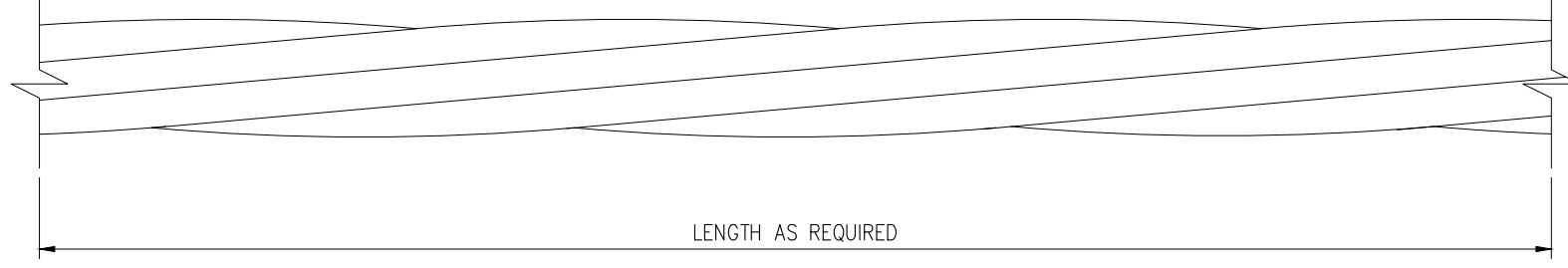
These drawings contain
proprietary information
restricted solely to this
project and may not be
reproduced in whole or
part without the written
expressed permission of
FREYSSINET, INC

FREYSSINET, INC
PHONE: 703-378-2500
WWW.FREYSSINETUSA.COM
COPYRIGHT & MODIFICATION RESERVED

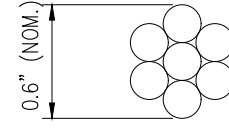
MEMBERS OF:

REVISIONS:

REV.	DATE	BY	CHKD	APP'D	DESCRIPTION
0	11-26-19	JM	TC/SN	SN	ORIGINAL



ELEVATION



SECTION

ITEM	DESCRIPTION	MATERIAL	PART # / LABEL
09	0.6" DIA. STRAND	STEEL, LOW RELAX. GR 270 STRAND PER ASTM A416	STRAND

- NOTES:
- NO STAMPED PART NUMBER

DRAWING TITLE:

0.6" BARE 270 KSI 7-WIRE STRAND

SCALE:
DIMENSIONS IN
INCHES. DO NOT
SCALE THIS DRAWING.

REV: 0

SHEET NO.:

FINC-19C15-10

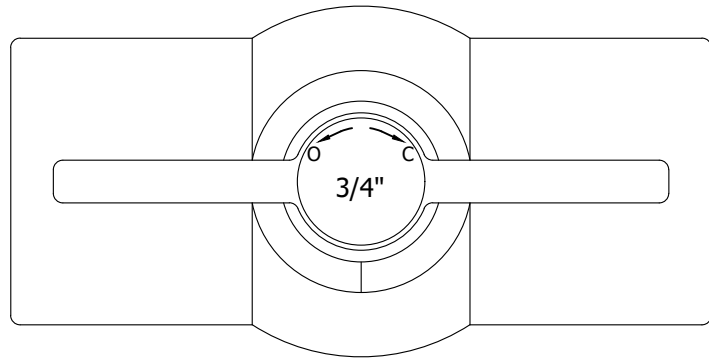
These drawings contain
proprietary information
restricted solely to this
project and may not be
reproduced in whole or
part without the written
expressed permission of
FREYSSINET, INC

FREYSSINET, INC
PHONE: 703-378-2500
WWW.FREYSSINETUSA.COM
COPYRIGHT & MODIFICATION RESERVED

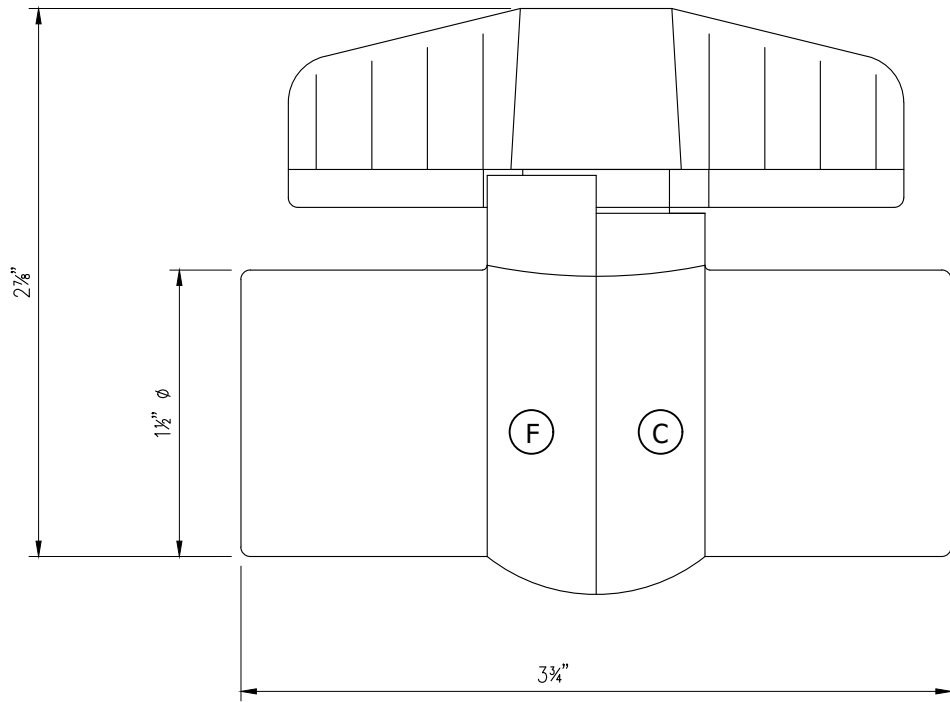
MEMBERS OF:

REVISIONS:

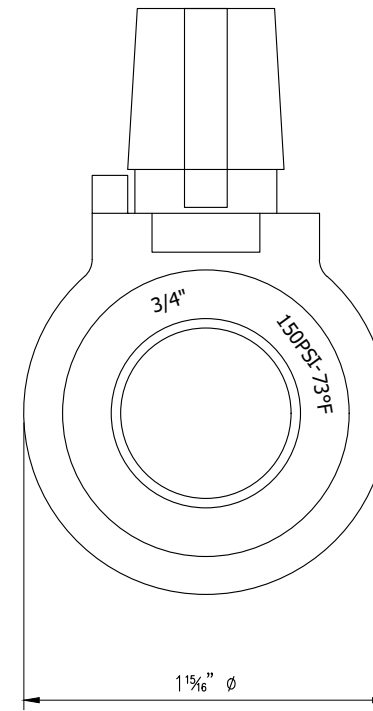
REV.	DATE	BY	CHKD	APP'D	DESCRIPTION
0	11-26-19	JM	TC/SN	SN	ORIGINAL



TOP VIEW



ELEVATION



FRONT VIEW

ITEM	DESCRIPTION	MATERIAL	PART # / LABEL
11*	3/4" NPT BALL VALVE	SCH. 80 PVC ASTM 2467 (150 PSI RATED)	GBV34

NOTES:

- PRESSURE RATING \geq 150 psi
- 3/4" NPT
- NO STAMPED PART NUMBER
- EXTERNAL DIMENSIONS MAY VARY
- TEMPORARY FITTING

REVISIONS:

REV.	DATE	BY	CHKD.	APP'D.	REVISION DESCRIPTION
0	11-26-19	JM	TC/SN	SN	ORIGINAL

MEMBERS OF:

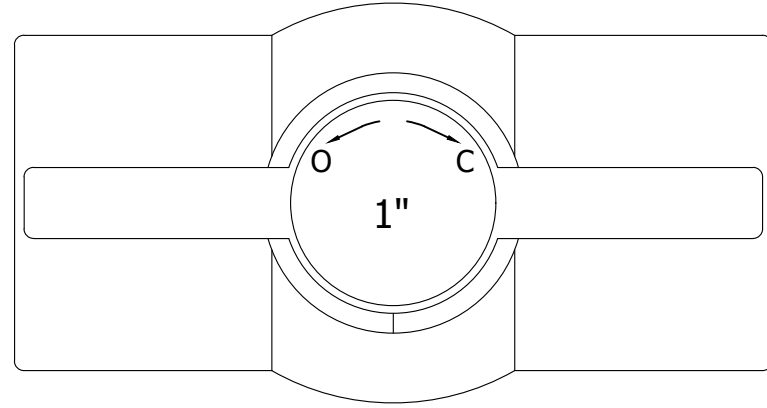


FREYSSINET, INC
SUSTAINABLE TECHNOLOGY
PHONE: 703-378-2500
WWW.FREYSSINETUSA.COM
COPYRIGHT & MODIFICATION RESERVED

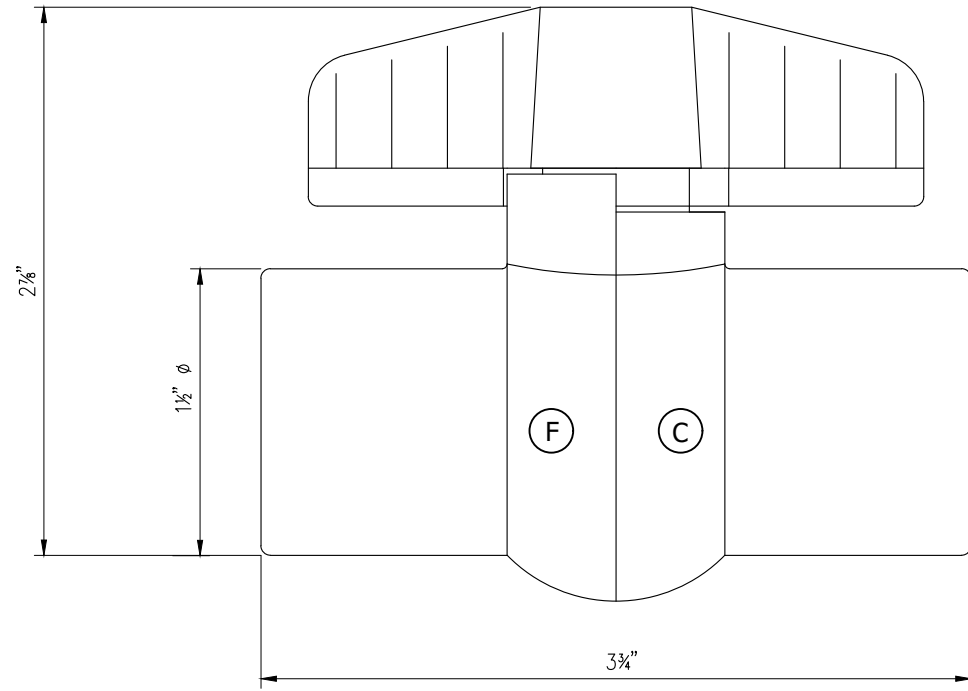
These drawings contain proprietary information restricted solely to this project and may not be reproduced in whole or part without the written expressed permission of FREYSSINET, INC

DRAWING TITLE:
3/4" NPT BALL VALVE (TEMPORARY FITTING)

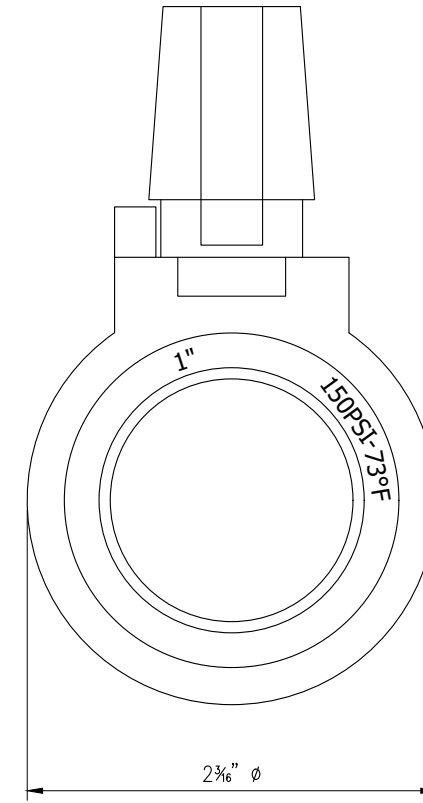
SCALE: DIMENSIONS IN INCHES. DO NOT SCALE THIS DRAWING.
SHEET NO.: **0**
REV: **0**
FINC-19C15-12



TOP VIEW



ELEVATION



FRONT VIEW

ITEM	DESCRIPTION	MATERIAL	PART # / LABEL
12*	1" NPT BALL VALVE	SCH. 80 PVC ASTM 2467 (150 PSI RATED)	GBV10

- NOTES:
- PRESSURE RATING \geq 150 psi
 - 1" NPT
 - NO STAMPED PART NUMBER
 - EXTERNAL DIMENSIONS MAY VARY
 - TEMPORARY FITTING

REVISIONS:

REV.	DATE	BY	DESCRIPTION
0	11-26-19	JM	TC/SN SN ORIGINAL

MEMBERS OF:

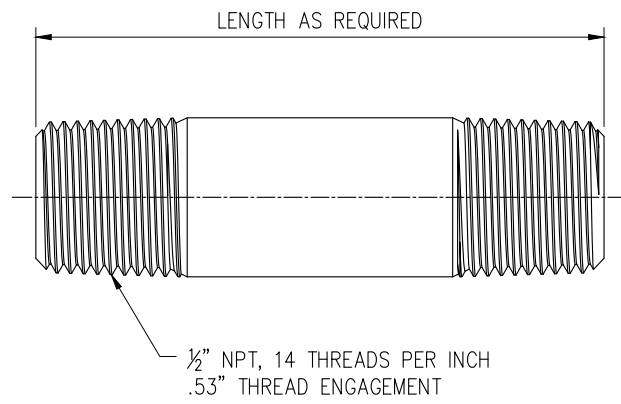


FREYSSINET, INC
SUSTAINABLE TECHNOLOGY
PHONE: 703-378-2500
WWW.FREYSSINETUSA.COM
COPYRIGHT & MODIFICATION RESERVED

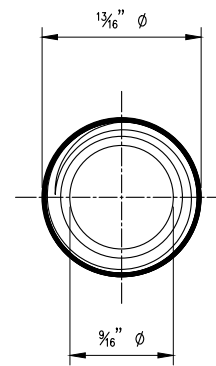
These drawings contain proprietary information restricted solely to this project and may not be reproduced in whole or part without the written expressed permission of FREYSSINET, INC

DRAWING TITLE:
1" NPT BALL VALVE (TEMPORARY FITTING)

SCALE: DIMENSIONS IN INCHES. DO NOT SCALE THIS DRAWING.
SHEET NO.: **0**
REV: **0**
PART # / LABEL: **FINC-19C15-13**



ELEVATION



FRONT VIEW

ITEM	DESCRIPTION	MATERIAL	PART # / LABEL
14*	1/2" NPT PIPE NIPPLE	SCH. 80 PVC OR SCH. 40 STEEL (150 PSI RATED)	GNP12

- NOTES:
- NO STAMPED PART NUMBER
 - PRESSURE RATING \geq 150 psi
 - 1/2" NPT
 - TEMPORARY FITTING

REVISIONS:

REV.	DATE	BY	CHKD.	APP'D.	REVISION DESCRIPTION
1	02-24-20	JM	TC/SN	SN	FDOT SPECIFICATION 960 REVIEW COMMENTS
0	11-26-19	JM	TC/SN	SN	ORIGINAL

MEMBERS OF:



FREYSSINET
SUSTAINABLE TECHNOLOGY

FREYSSINET, INC
PHONE: 703-378-2500
WWW.FREYSSINETUSA.COM
COPYRIGHT & MODIFICATION RESERVED

These drawings contain proprietary information restricted solely to this project and may not be reproduced in whole or part without the written expressed permission of FREYSSINET, INC

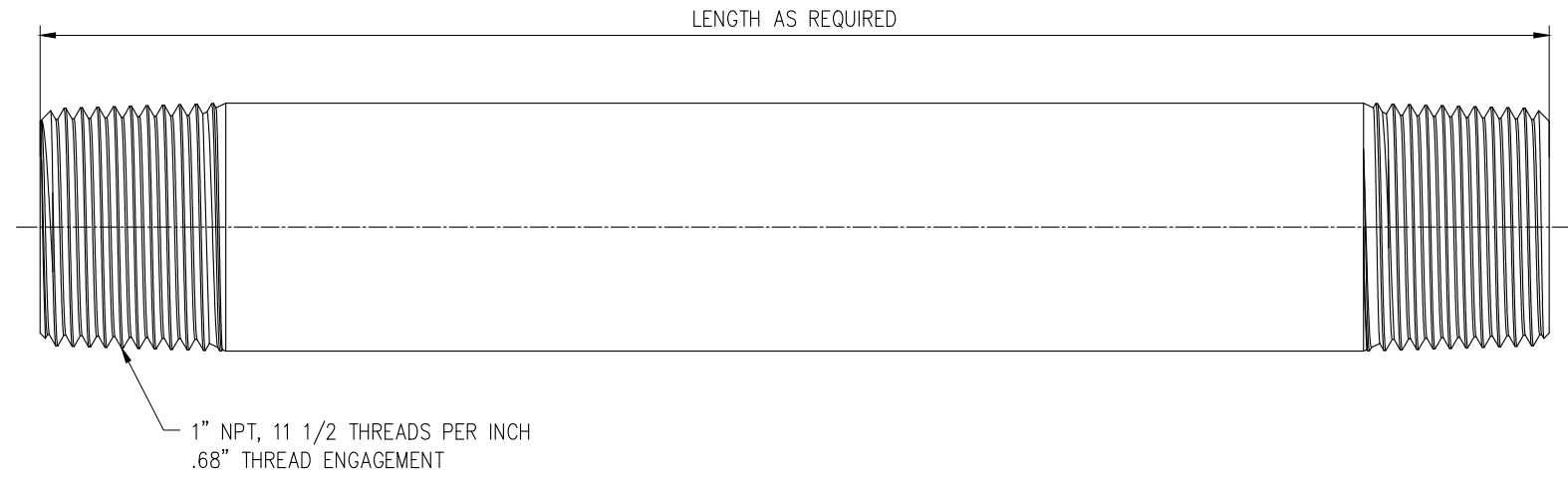
DRAWING TITLE:
1/2" NPT PIPE NIPPLE (TEMPORARY FITTING)

SCALE: DIMENSIONS IN INCHES. DO NOT SCALE THIS DRAWING.

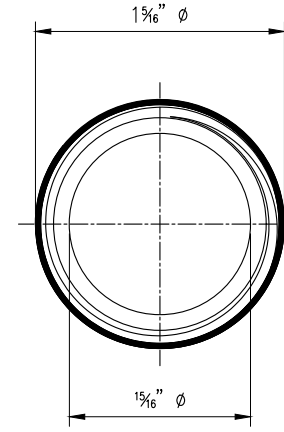
REV: 1

SHEET NO.: 1

FINC-19C15-14



ELEVATION



FRONT VIEW

ITEM	DESCRIPTION	MATERIAL	PART # / LABEL
16*	1" NPT PIPE NIPPLE	SCH. 80 PVC OR SCH. 40 STEEL (150 PSI RATED)	GNP10

- NOTES:
- NO STAMPED PART NUMBER
 - PRESSURE RATING ≥150 psi
 - 1" NPT
 - TEMPORARY FITTING

REVISIONS:

REV.	DATE	BY	DESCRIPTION
1	02-24-20	JM	TC/SN
0	11-26-19	JM	TC/SN

MEMBERS OF:

FREYSSINET, INC
 SUSTAINABLE TECHNOLOGY
 PHONE: 703-378-2500
 WWW.FREYSSINETUSA.COM
 COPYRIGHT & MODIFICATION RESERVED

These drawings contain proprietary information restricted solely to this project and may not be reproduced in whole or part without the written expressed permission of FREYSSINET, INC

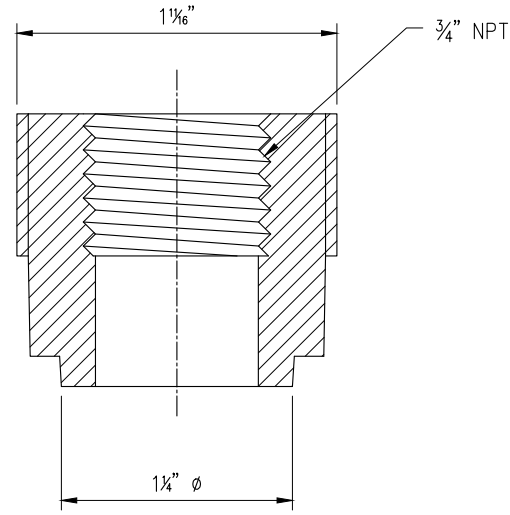
DRAWING TITLE: **1" NPT PIPE NIPPLE (TEMPORARY FITTING)**

SCALE: DIMENSIONS IN INCHES. DO NOT SCALE THIS DRAWING.

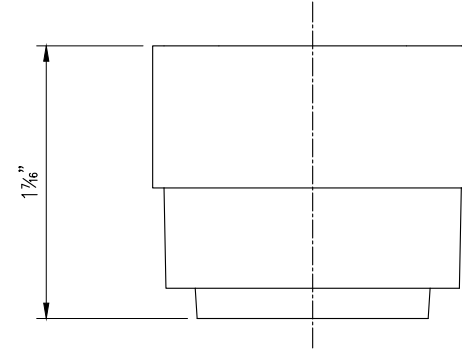
REV: **1**

SHEET NO.: **1**

FINC-19C15-15



SECTION



FRONT VIEW

ITEM	DESCRIPTION	MATERIAL	PART # / LABEL
20	3/4" NPT WELDABLE PORT	POLYPROPYLENE ASTM D4101	34NPTPORT

- NOTES:
- WELDED TO DUCT WALL

REVISIONS:

REV.	DATE	BY	DESCRIPTION
0	11-26-19	JM	TC/SN
			CHECKED
			APPROVED
			SN
			ORIGINAL

MEMBERS OF:

FREYSSINET, INC
SUSTAINABLE TECHNOLOGY
PHONE: 703-378-2500
WWW.FREYSSINETUSA.COM
COPYRIGHT & MODIFICATION RESERVED

These drawings contain proprietary information restricted solely to this project and may not be reproduced in whole or part without the written expressed permission of FREYSSINET, INC

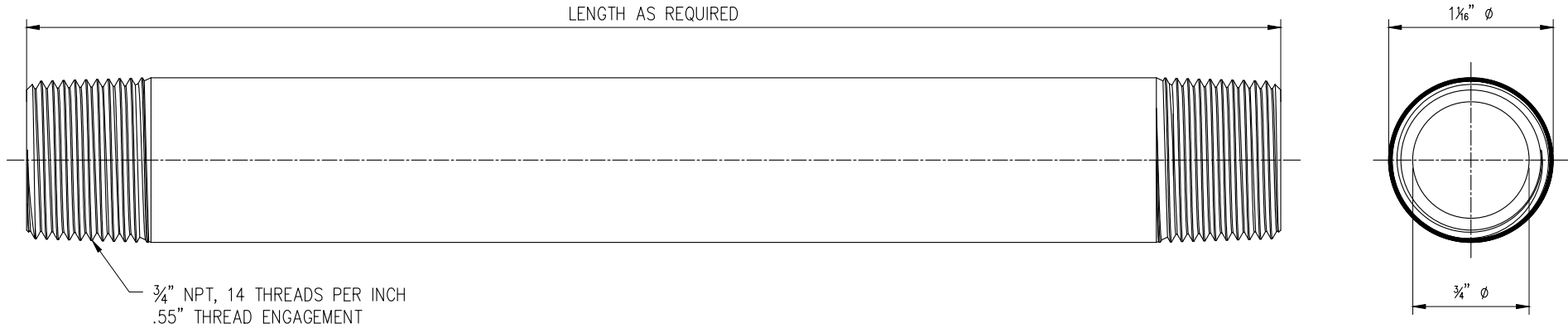
DRAWING TITLE: **3/4" NPT WELDABLE PORT**

SCALE: DIMENSIONS IN INCHES. DO NOT SCALE THIS DRAWING.

REV: 0

SHEET NO.: 0

FINC-19C15-17



ITEM	DESCRIPTION	MATERIAL	PART # / LABEL
21	3/4" NPT PE TUBE	HIGH-DENSITY POLYETHYLENE PER ASTM D3350	RGCLP34X100

- NOTES:
- NO STAMPED PART NUMBER
 - PRESSURE RATING ≥150 psi
 - 3/4" NPT, MANUALLY THREADED

REVISIONS:

REV.	DATE	BY	DESCRIPTION
0	11-26-19	JM	TC/SN
			CHECKED
			APPROVED
			ORIGINAL



FREYSSINET, INC
 PHONE: 703-378-2500
 WWW.FREYSSINETUSA.COM
 COPYRIGHT & MODIFICATION RESERVED

These drawings contain proprietary information restricted solely to this project and may not be reproduced in whole or part without the written expressed permission of FREYSSINET, INC

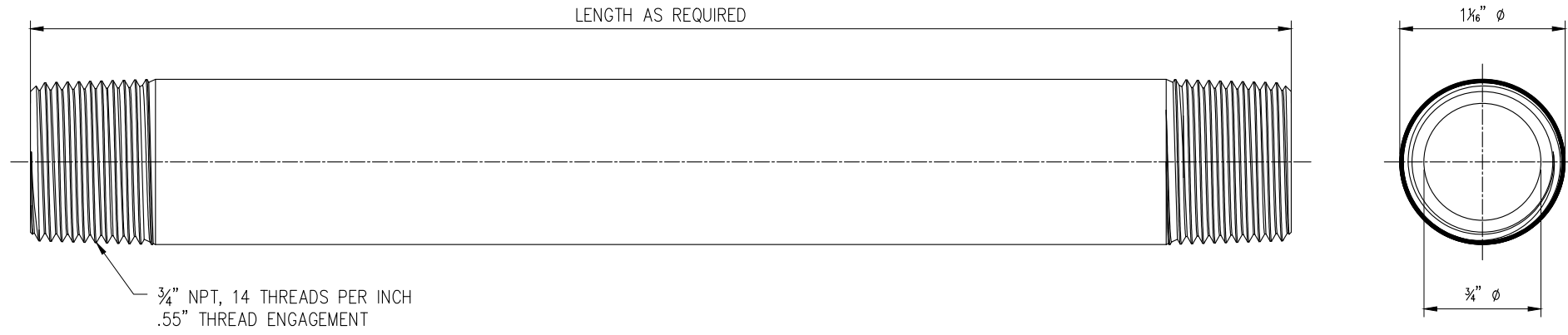
DRAWING TITLE: **3/4" NPT PE TUBE**

SCALE: DIMENSIONS IN INCHES. DO NOT SCALE THIS DRAWING.

REV: **0**

SHEET NO.: **0**

PROJECT NO.: **FINC-19C15-18**



ITEM	DESCRIPTION	MATERIAL	PART # / LABEL
22*	3/4" NPT PIPE NIPPLE	SCH. 80 PVC OR SCH. 40 STEEL (150 PSI RATED)	GNP34

- NOTES:
- NO STAMPED PART NUMBER
 - PRESSURE RATING ≥150 psi
 - 3/4" NPT
 - TEMPORARY FITTING

REVISIONS:

REV.	DATE	BY	DESCRIPTION
0	11-26-19	JM	TC/SN
			CHECKED
			APPROVED
			SN
			ORIGINAL



FREYSSINET, INC
 PHONE: 703-378-2500
 WWW.FREYSSINETUSA.COM
 COPYRIGHT & MODIFICATION RESERVED

These drawings contain proprietary information restricted solely to this project and may not be reproduced in whole or part without the written expressed permission of FREYSSINET, INC

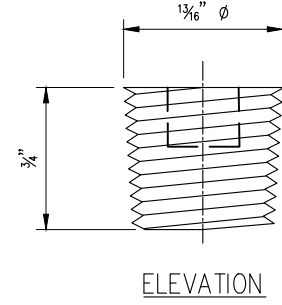
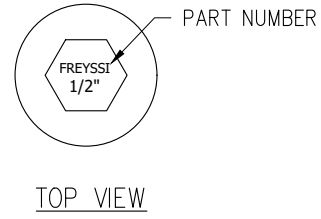
DRAWING TITLE: **3/4" NPT PIPE NIPPLE (TEMPORARY FITTING)**

SCALE: DIMENSIONS IN INCHES. DO NOT SCALE THIS DRAWING.

REV: 0

SHEET NO.: 0

FINC-19C15-19



ITEM	DESCRIPTION	MATERIAL	PART # / LABEL
23	1/2" NPT PLUG	NYLON ASTM D5989	GPLG12

- NOTES:
- PRESSURE RATING \geq 150 psi
 - PLUG MEETS OR EXCEEDS FDOT STANDARD SPECIFICATIONS, SECTION 960

REVISIONS:

REV.	DATE	DRAWN	CHECKED	APPROVED	REVISION DESCRIPTION
0	11-26-19	JM	TC/SN	SN	ORIGINAL

MEMBERS OF:



FREYSSINET
SUSTAINABLE TECHNOLOGY

FREYSSINET, INC
PHONE: 703-378-2500
WWW.FREYSSINETUSA.COM
COPYRIGHT & MODIFICATION RESERVED

These drawings contain proprietary information restricted solely to this project and may not be reproduced in whole or part without the written expressed permission of FREYSSINET, INC

DRAWING TITLE:
1/2" NPT NYLON PLUG

SCALE: DIMENSIONS IN INCHES. DO NOT SCALE THIS DRAWING.

REV: 0 SHEET NO.: 0

FINC-19C15-20

