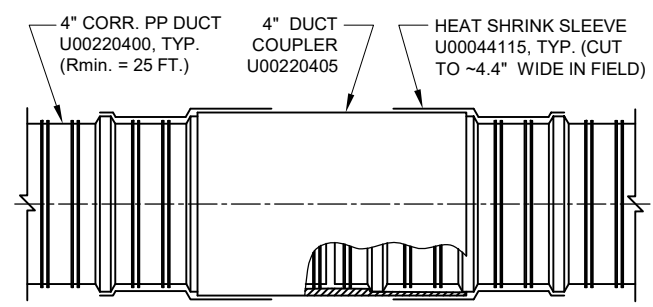


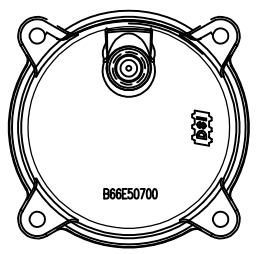
Plate Type	fci, ksi	Depth, D (in)	Minimum distances, in	
			End dist, E	c/c dist, C
Rectangular	8.0	13.0	9.0	14.0
	7.0	15.0	9.0	14.0
	6.0	17.0	10.0	16.0
	5.0	21.0	12.5	21.0
	4.0	25.0	14.5	25.0

LEGEND:
 E = END DISTANCE
 C = CENTER TO CENTER DISTANCE
 D/2 = EDGE DISTANCE

PLATE TYPE	PART NO.	WIDTH	LENGTH	THICKNESS t
RECTANGULAR	B66E22700	12"	14"	2.5"



DUCT COUPLING



CAP END VIEW

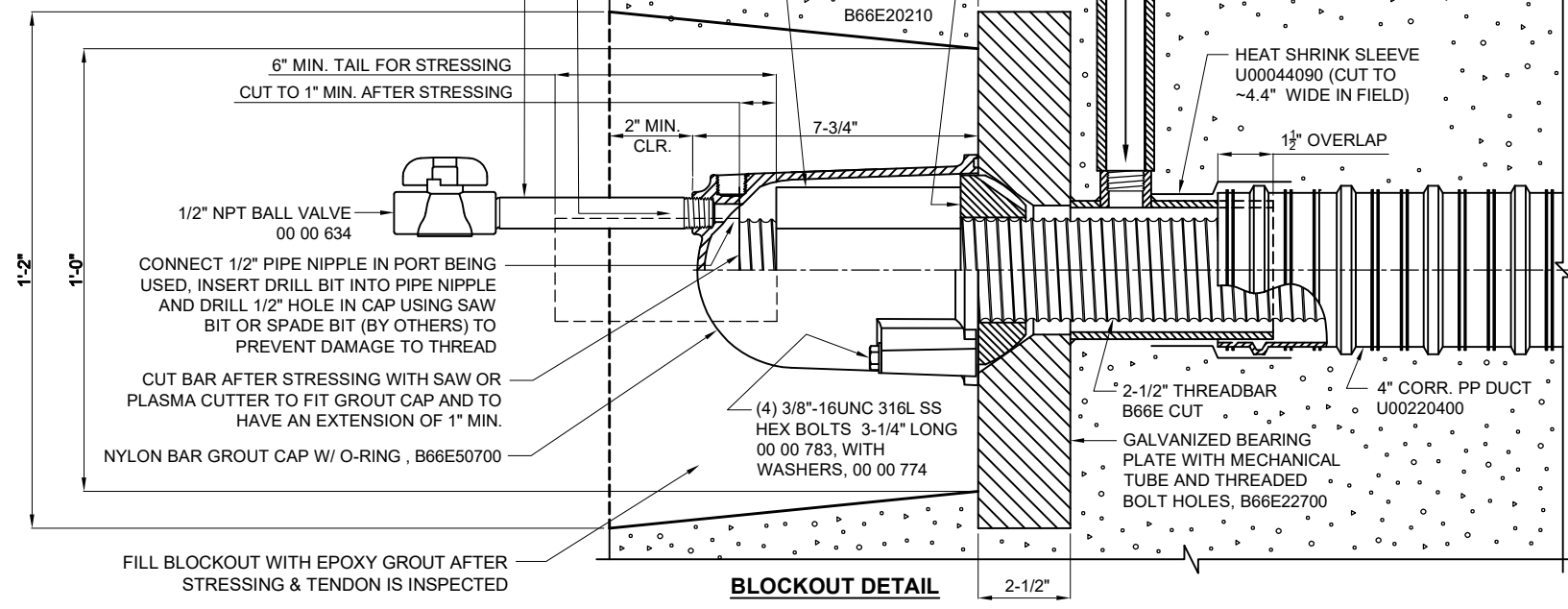
REPLACE PIPE NIPPLE WITH 1/2" NPT NYLON PLUG, 00 00 649, AFTER GROUT HAS SET (USE TEFLON TAPE OR PASTE ON THREADS)
 1/2" NPT SCH 40 STEEL PIPE NIPPLE, LENGTH AS REQUIRED, 00 00 678 (FOR VENTING) (USE TEFLON TAPE OR PASTE ON THREADS)

3/4" NPT BALL VALVE, 00 00 834
 REPLACE PIPE NIPPLE WITH 3/4" NPT PLUG, 00 00 849, AFTER GROUT HAS SET (USE TEFLON TAPE OR PASTE ON THREADS)

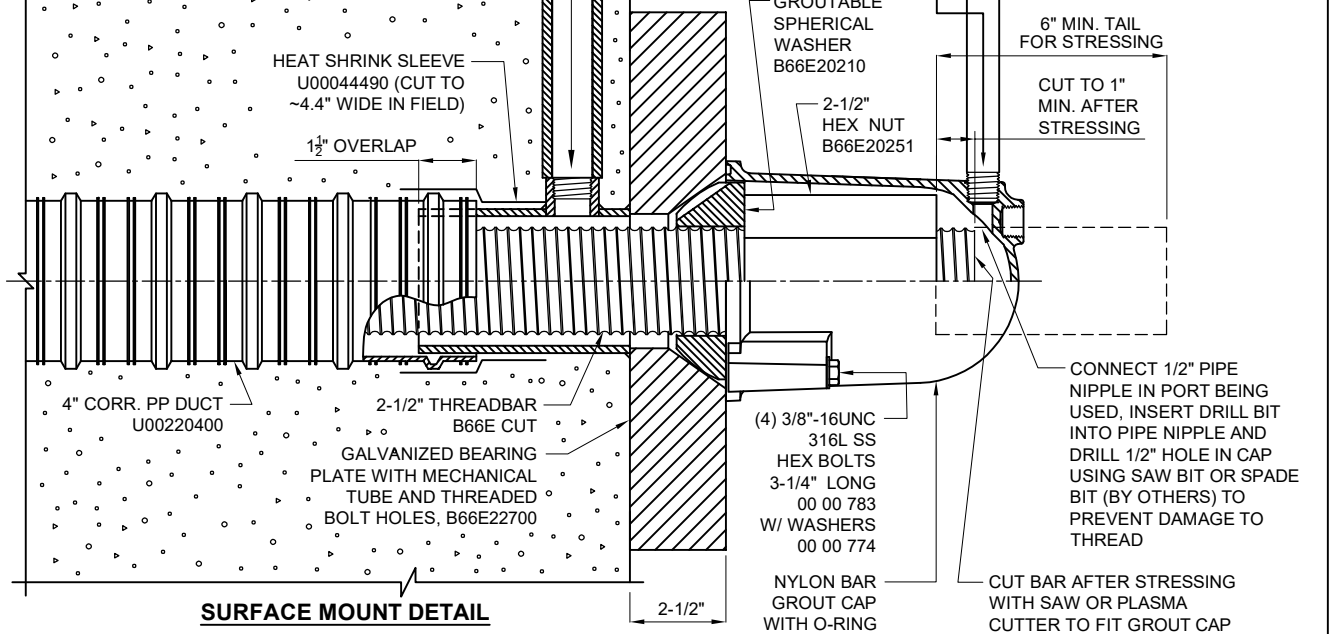
3/4" NPT SCH 40 STEEL PIPE NIPPLE, LENGTH AS REQUIRED, 00 00 878 (GROUT INLET/OUTLET) (USE TEFLON TAPE OR PASTE ON THREADS)
 FILL HOLE WITH EPOXY GROUT AFTER GROUT HAS SET & FOAM INSULATION (BY OTHERS) HAS BEEN REMOVED. REFER TO FDOT STANDARD PLANS INDEX 462-003 FOR PT ANCHORAGE & TENDON FILLING DETAILS

3/4" NPT SCH 40 STEEL PIPE NIPPLE, LENGTH AS REQUIRED, 00 00 878 (GROUT INLET/OUTLET) (USE TEFLON TAPE OR PASTE ON THREADS)
 FILL HOLE WITH EPOXY GROUT AFTER GROUT HAS SET & FOAM INSULATION (BY OTHERS) HAS BEEN REMOVED. REFER TO FDOT STANDARD PLANS INDEX 462-003 FOR PT ANCHORAGE & TENDON FILLING DETAILS

3/4" NPT BALL VALVE, 00 00 834
 REPLACE PIPE NIPPLE WITH 3/4" NPT PLUG, 00 00 849, AFTER GROUT HAS SET (USE TEFLON TAPE OR PASTE ON THREADS)
 1/2" NPT BALL VALVE 00 00 634
 1/2" NPT SCH 40 STEEL PIPE NIPPLE, LENGTH AS REQUIRED, 00 00 678 (FOR VENTING) (USE TEFLON TAPE OR PASTE ON THREADS)



BLOCKOUT DETAIL



SURFACE MOUNT DETAIL

6" MIN. TAIL FOR STRESSING CUT TO 1" MIN. AFTER STRESSING

CONNECT 1/2" PIPE NIPPLE IN PORT BEING USED, INSERT DRILL BIT INTO PIPE NIPPLE AND DRILL 1/2" HOLE IN CAP USING SAW BIT OR SPADE BIT (BY OTHERS) TO PREVENT DAMAGE TO THREAD

CUT BAR AFTER STRESSING WITH SAW OR PLASMA CUTTER TO FIT GROUT CAP AND TO HAVE AN EXTENSION OF 1" MIN.

NYLON BAR GROUT CAP W/ O-RING, B66E50700

FILL BLOCKOUT WITH EPOXY GROUT AFTER STRESSING & TENDON IS INSPECTED

- NOTES:
- USERS SHALL REFER TO FDOT STANDARD SPECIFICATIONS AND PROJECT SPECIFIC CRITERIA FOR TENDON INSTALLATION, STRESSING, & GROUTING.
 - REQUIRED REINFORCING BARS ARE NOT SHOWN ON THIS DRAWING.
 - MAXIMUM ANGULAR MISALIGNMENT WHEN USING ANCHOR NUT: ±2°.
 - CENTER TO CENTER, END AND EDGE DISTANCE DEPENDS ON THE LOCATION OF THE BAR AND CONCRETE STRENGTH, (SEE TABLE).
 - C/C DISTANCE = 2 X END DISTANCE - 2 X CONCRETE COVER (2" ASSUMED). TIGHTER C/C DISTANCE SHOULD BE EVALUATED.
 - DUCT IS DELIVERED IN STRAIGHT SECTIONS AND IS NOT INTENDED TO BE COILED.
 - BURSTING REINFORCEMENT IS NOT SHOWN AND WILL BE INCLUDED WITH THE SHOP DRAWINGS.
 - THREADBAR TENDONS ARE STRESSED FROM ONE END ONLY.

WARNING: READ AND COMPLY WITH ALL APPLICABLE SAFETY AND OPERATING INSTRUCTIONS AND WARNINGS FOR THREADBAR STRESSING BEFORE STARTING ANY WORK OR OPERATION.

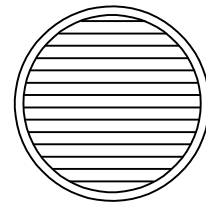
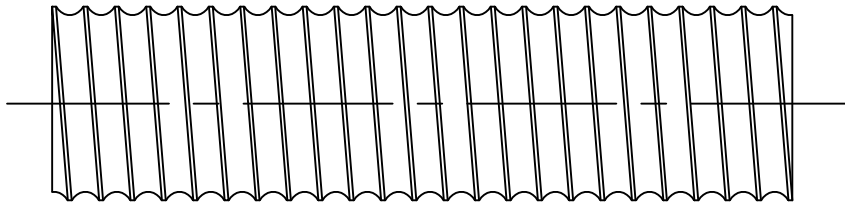
CAUTION: WHEN PRESSURIZING GROUT CAPS, DO NOT STAND BEHIND CAPS!

CAUTION: WHEN USING HIGH STRENGTH DYWIDAG THREADBAR® (GRADE 150) DO NOT WELD TO BAR. DO NOT USE BAR AS GROUND CONNECTION FOR WELDING. DO NOT ALLOW HOT SLAG OR SPARKS TO TOUCH BAR. DO NOT DAMAGE BAR SURFACE. DO NOT USE BARS WITH KINKS OR SHARP BENDS. FAILURE TO HEED THIS WARNING COULD CAUSE BAR TO BREAK RESULTING IN INJURY OR DAMAGE

MATERIAL LIST		
PART NO.	DESCRIPTION	MATERIAL SPECIFICATION
B66E CUT	2-1/2" (66mm) THREADBAR	ASTM A722 TYPE II STEEL
B66E22700	12"x14"x2.5" RECTANGULAR PLATE WITH 3-3/4" OD x 3/16" WALL, 5-1/2" LONG MECHANICAL TUBING AND BOLT HOLES, GALV.	STEEL PLATE: ASTM A36, MECHANICAL TUBE: ASTM A512, A513 OR A519, ASSEMBLY GALVANIZED
B66E50700	NYLON BAR GROUT CAP WITH O-RING	CAP: NYLON 6, 20% GLASS FIBER FILLED O-RING: EPDM
00 00 783 00 00 774	(4) 3/8"-16UNC HEX BOLTS, 3-1/4" LONG 3/8" NARROW WASHERS	316L STAINLESS STEEL
B66E20210	2-1/2" GROUTABLE SPHERICAL WASHER	ASTM A536, 100-70-03
B66E20251	2-1/2" HEX NUT	C1035 CD SEAMLESS MECH. TUBE
00 00 649	1/2" NPT PLUG	NYLON 6, WHITE
00 00 678	1/2" NPT NIPPLE, LENGTH AS REQ'D (TEMPORARY)	SCH 40 BLACK WELDED STEEL
00 00 878	3/4" NPT NIPPLE, LENGTH AS REQ'D (TEMPORARY)	SCH 40 BLACK WELDED STEEL
00 00 849	3/4" NPT PLUG	NYLON 6, WHITE
00 00 634	1/2" NPT BALL VALVE (TEMPORARY)	PVC
00 00 834	3/4" NPT BALL VALVE (TEMPORARY)	PVC
U00220400	4" (100mm) CORRUGATED DUCT	POLYPROPYLENE
U00220405	(OPTIONAL) 4" (100mm) DUCT COUPLER	POLYPROPYLENE
U00044090	HEAT SHRINK SLEEVE, PLA-90-450-YE	ACCORD. TO FDOT SPEC. P.T. SEC. 960-2.2.1.8
U00044115	HEAT SHRINK SLEEVE, PLA-115-450-BK	ACCORD. TO FDOT SPEC. P.T. SEC. 960-2.2.1.8
ANS	TEFLON TAPE OR PASTE	-

DIMENSIONS: INCH		REV.		DATE	NAME	PT66E200
INTERNAL GROUTED SYSTEM FOR 2-1/2" (66mm) THREADBAR ASSEMBLY		SCALE				
		DATE: 08-01-19 DWG: G. MALECKI CHK: S.I. APP: S.I.		1:5		
THIS DRAWING, THE PERTINENT ENCLOSURES, DESCRIPTIONS, CALCULATIONS ETC. AND THEIR CONTENTS ARE THE PROPERTY OF DYWIDAG SYSTEMS INTERNATIONAL, USA, INC. THEY ARE NOT ALLOWED TO BE DUPLICATED WITHOUT OUR PERMISSION. THEY ARE ALSO NOT TO BE SHOWN OR EXPLAINED FOR ANY REASON TO A THIRD PARTY OTHER THAN FOR REASONS EXPRESSLY INTENDED BY DSI'S SUBMITTAL TO THE ORIGINAL RECEIVER. THEY HAVE TO BE RETURNED UPON REQUEST.						
DYWIDAG-SYSTEMS INTERNATIONAL, USA, INC. POST TENSIONING / REINFORCING UNIT PHONE: 630-739-1100 320 MARMON DRIVE - BOLINGBROOK, IL FAX: 630-739-1405						

RIGHT-HAND THREAD



<u>PART NUMBERS</u>	<u>SPECIFICATIONS</u>
FOR BARE BAR: B66E CUT	ASTM A722 TYPE II (STRENGTH REQUIREMENTS)

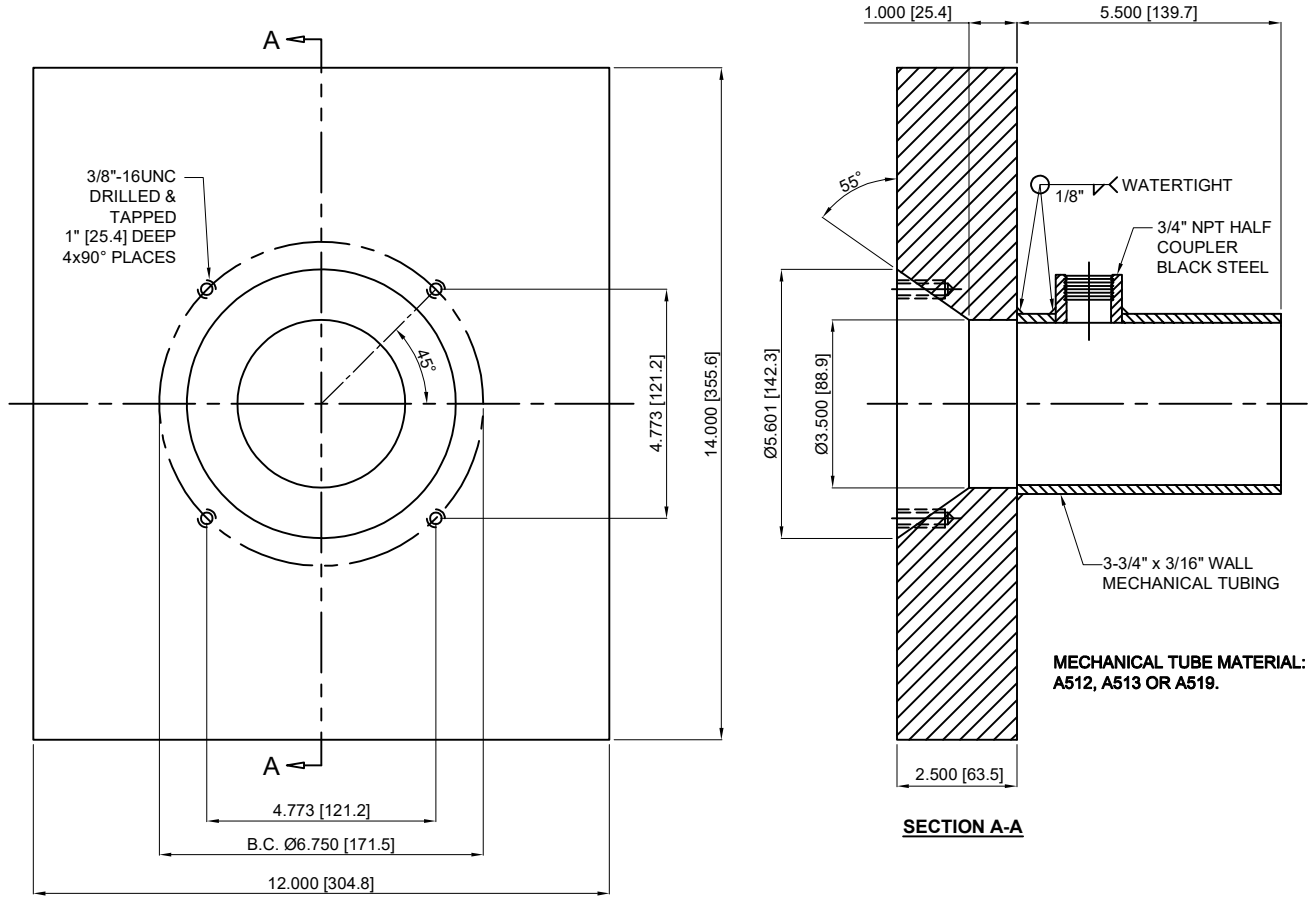
<u>PHYSICAL PROPERTIES</u>	
EFFECTIVE AREA:	5.16 SQ.IN. NOM. (3331mm ²)
ULTIMATE STRENGTH:	150 KSI (1035 N/mm ²)
ULTIMATE LOAD:	774 KIPS (3442 kN)
YIELD LOAD:	619.2 KIPS (2754 kN)
WEIGHT:	18.2 LBS./FT. (27.1 kg/m)
MAX. MAJOR ϕ :	2.790 IN. (70.87mm)
PITCH:	0.315 IN. (8mm)

DIMENSIONS: INCH/mm mm FOR REFERENCE ONLY		QUALITY PLAN NUMBER: QB0000010B		REV.	DATE	NAME	PART NUMBER: B66E CUT
66mm COLD ROLLED BAR GRADE 150				MATERIAL: SEE ABOVE	SCALE NTS		DRAWING NUMBER: B66E00010
						DATE: 07-18-08	

THIS DRAWING, THE PERTINENT ENCLOSURES, DESCRIPTIONS, CALCULATIONS ETC. AND THEIR CONTENTS ARE THE PROPERTY OF **DYWIDAG SYSTEMS INTERNATIONAL, USA, INC.** THEY ARE NOT ALLOWED TO BE DUPLICATED WITHOUT OUR PERMISSION. THEY ARE ALSO NOT TO BE SHOWN OR EXPLAINED FOR ANY REASON TO A THIRD PARTY OTHER THAN FOR REASONS EXPRESSLY INTENDED BY DSI'S SUBMITTAL TO THE ORIGINAL RECEIVER. THEY HAVE TO BE RETURNED UPON REQUEST.

DYWIDAG-SYSTEMS INTERNATIONAL, USA, INC.
 320 MARMON DRIVE - BOLINGBROOK, IL 60440
 PHONE: 630-739-1100 FAX: 630-739-1405





NOTES:

1. PLATE & PIPE GALVANIZED ACCORDING TO ASTM A123 AFTER WELDING.
2. DIMENSIONS AND TOLERANCES APPLY TO UNCOATED PLATES.
3. ENSURE THREADABILITY OF TAPPED HOLES IN COATED PLATES.
4. 100mm CORR. PP DUCT, U00220400 & 4" SDR HDPE PIPE, U00055119 FITS OVER TUBING.

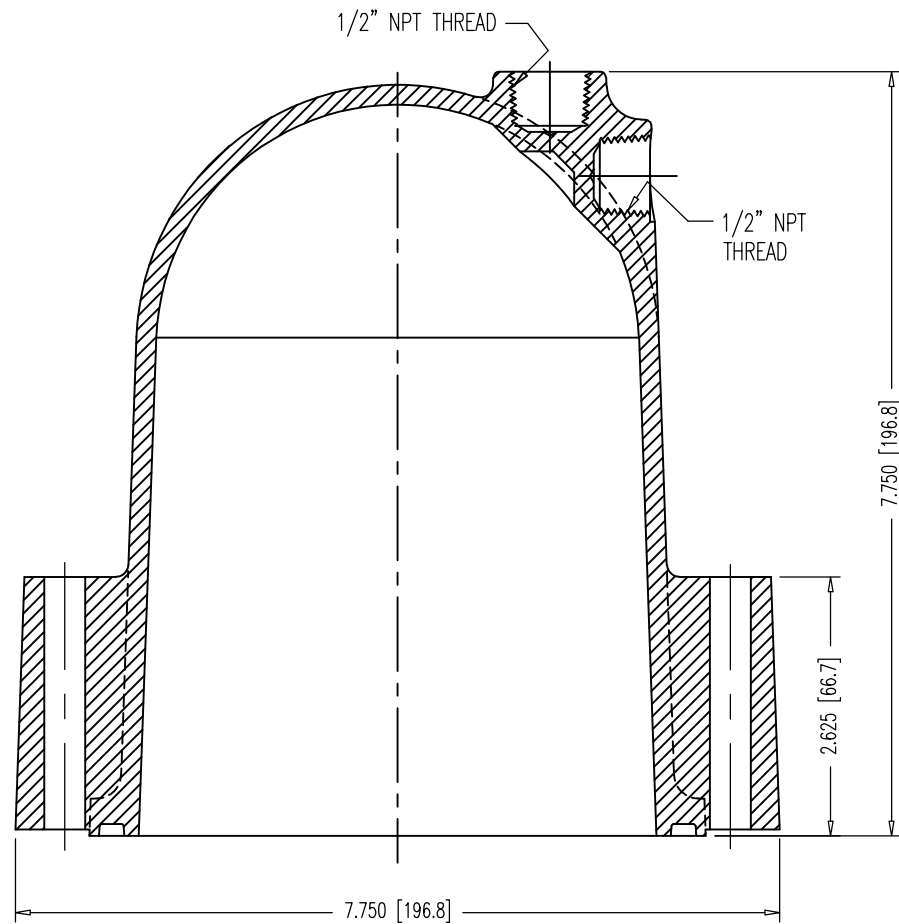
PLATE MATERIAL: ASTM A36
 MECHANICAL TUBE MATERIAL
 SHALL BE A512, A513 OR A519

DIMENSIONS: INCH [mm] mm FOR REFERENCE ONLY		QUALITY PLAN NUMBER:		TOLERANCES: ±.020 UNLESS NOTED	WEIGHT 118.9 LBS.	REV.	DATE	DWG.	CHK.	PART NUMBER B66E22700
SQUARE BEARING PLATE WITH EXIT PIPE FOR 2 1/2" THREADBAR				MATERIAL: SEE ABOVE	SCALE 1 : 4					DRAWING NUMBER: B66E22700
				DATE: 01/09/19	DWG: G. Malecki	CHK: SY	APP: SE			

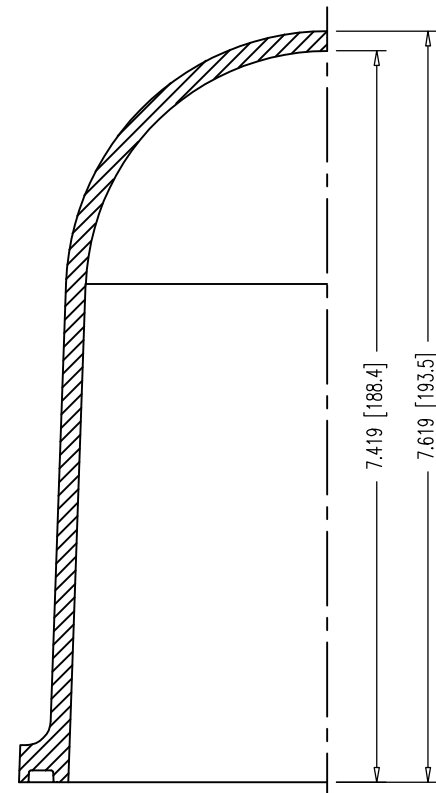
THIS DRAWING, THE PERTINENT ENCLOSURES, DESCRIPTIONS, CALCULATIONS ETC. AND THEIR CONTENTS ARE THE PROPERTY OF DYWIDAG SYSTEMS INTERNATIONAL, USA, INC. THEY ARE NOT ALLOWED TO BE DUPLICATED WITHOUT OUR PERMISSION. THEY ARE ALSO NOT TO BE SHOWN OR EXPLAINED FOR ANY REASON TO A THIRD PARTY OTHER THAN FOR REASONS EXPRESSLY INTENDED BY DSI'S SUBMITTAL TO THE ORIGINAL RECEIVER. THEY HAVE TO BE RETURNED UPON REQUEST.

DYWIDAG-SYSTEMS INTERNATIONAL, USA, INC.
 POST TENSIONING / REINFORCING UNIT PHONE: 630-739-1100
 320 MARMON DRIVE - BOLINGBROOK, IL FAX: 630-739-1405

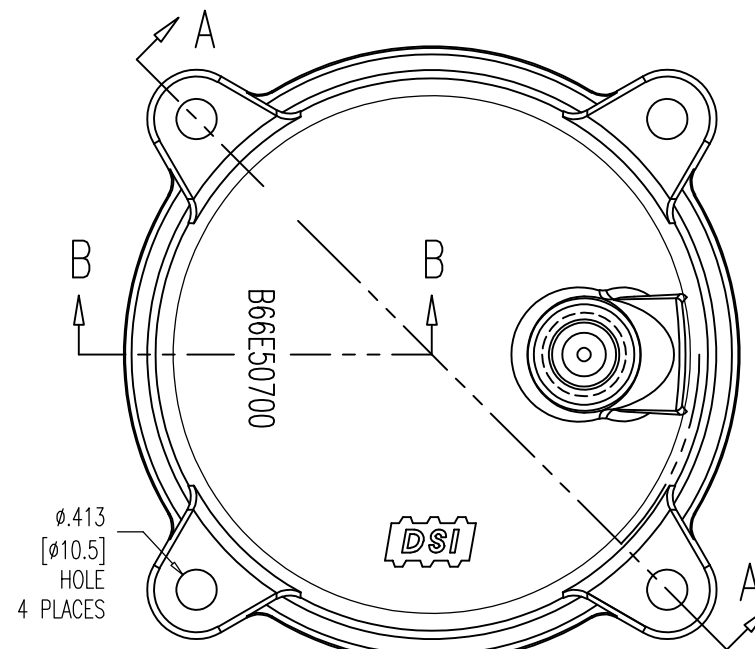




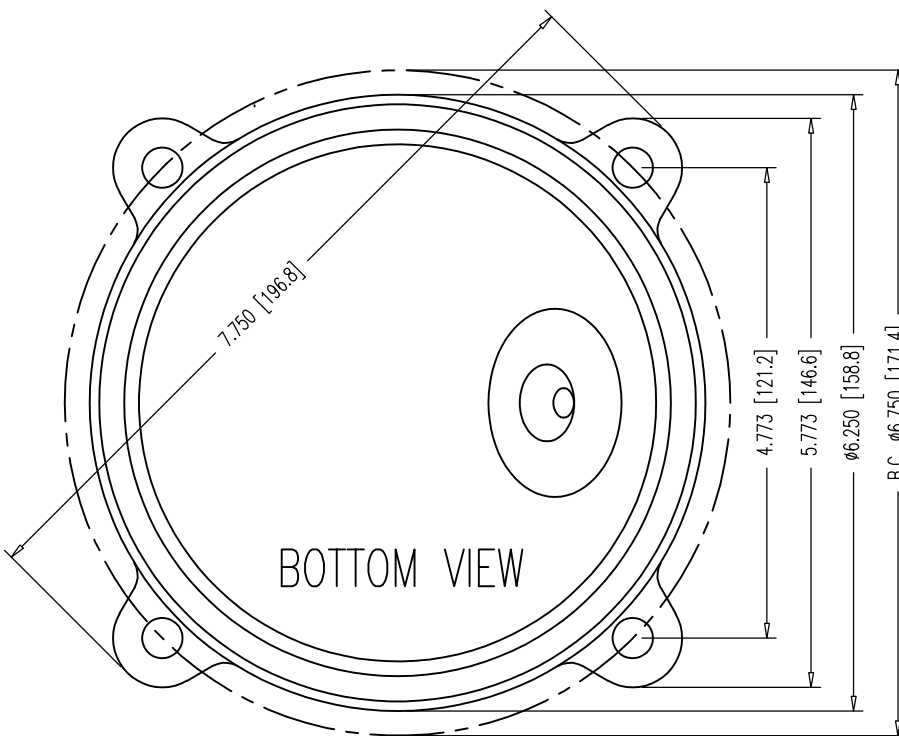
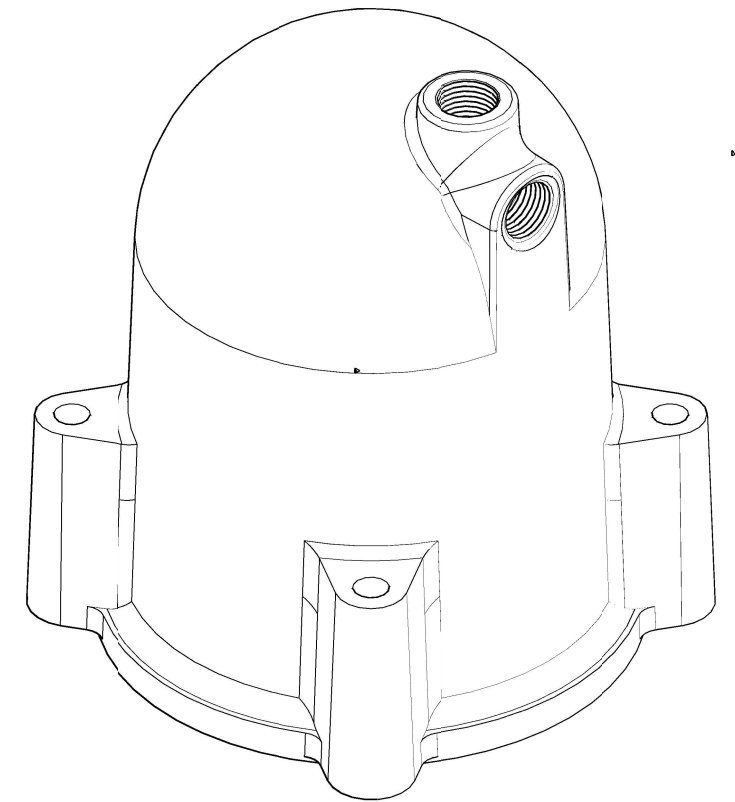
SECTION A-A



SECTION B-B



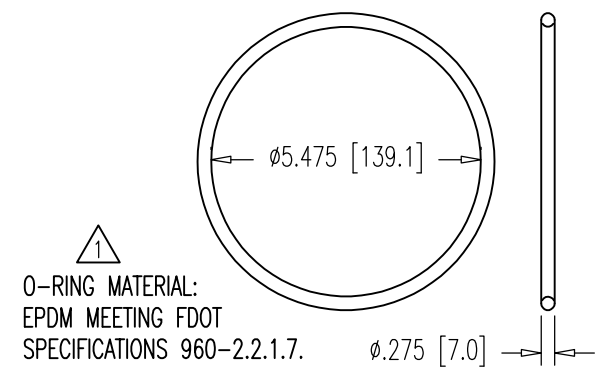
TOP VIEW



BOTTOM VIEW

NOTES:

1. USE 3/8"-16UNC 316L S.S. HEX BOLTS, 3-1/4" LONG 00 00 783 W/SMALL DIA. WASHER 00 00 774.
2. INSTALL O-RING IN GROOVE USING DROPS OF LIQUID ADHESIVE BEFORE SHIPPING.
3. THE NYLON CONFORMS TO ASTM D5989, WITH CELL CLASSIFICATION S-PA0401 (ULTIMATE STRENGTH 10,000 PSI MIN., WITH UV STABILIZER ADDED).
4. DRILL 1/2" [12.7] HOLE IN PORT BEING USED-CAUTION-RECOMMEND USING HOLE SAW BIT OR SPADE BIT (BY OTHERS), BE CAREFULL TO PREVENT DAMAGE TO THREADS OR CAP.
5. WHEN PRESSURIZING GROUT CAPS, DO NOT STAND BEHIND CAPS!

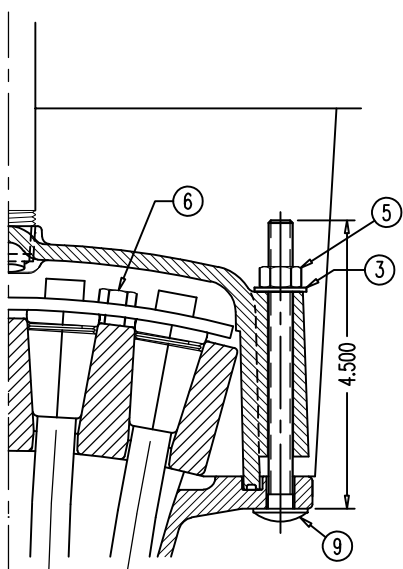


O-RING MATERIAL:
EPDM MEETING FDOT
SPECIFICATIONS 960-2.2.1.7.

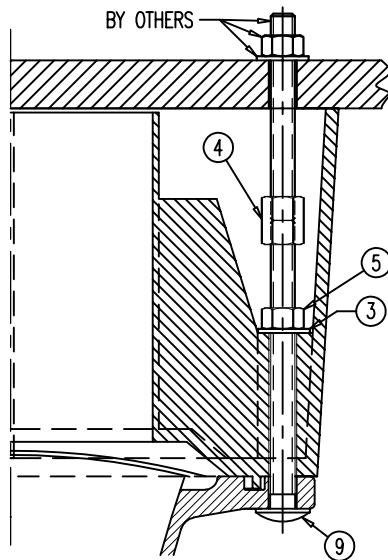
#433 O-RING
5-1/2"x6"x1/4"
SCALE: NOT TO SCALE

DIMENSIONS: INCH [mm] mm FOR REFERENCE ONLY		QUALITY PLAN NUMBER: QS60072300P		TOLERANCES: SEE TOLERANCE NOTE	WEIGHT 1.691 LBS.	REV. A	DATE 10/04/18	NAME S.I.	PART NUMBER: B66E50700
2-1/2" BAR GROUT CAP WITH O-RING				MATERIAL: NYLON 6 20% GLASS FIBER FILLED COLOR: BLACK	SCALE 1:2 UNLESS NOTED				DRAWING NUMBER: B66E50700
DATE: 04-08-13	DWG: G. MALECKI	CHK: S.Y.	APP: K.S.	THIS DRAWING, THE PERTINENT ENCLOSURES, DESCRIPTIONS, CALCULATIONS ETC. AND THEIR CONTENTS ARE THE PROPERTY OF DYWIDAG SYSTEMS INTERNATIONAL, USA, INC. THEY ARE NOT ALLOWED TO BE DUPLICATED WITHOUT OUR PERMISSION. THEY ARE ALSO NOT TO BE SHOWN OR EXPLAINED FOR ANY REASON TO A THIRD PARTY OTHER THAN FOR REASONS EXPRESSLY INTENDED BY DSI'S SUBMITTAL TO THE ORIGINAL RECEIVER. THEY HAVE TO BE RETURNED UPON REQUEST.					
				DYWIDAG-SYSTEMS INTERNATIONAL, USA, INC. 320 MARMON DRIVE - BOLINGBROOK, IL 60440 PHONE: 630-739-1100 FAX: 630-739-1405					

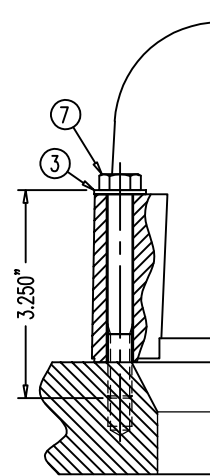




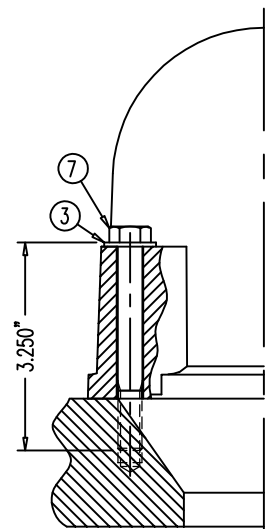
KEEPER PLATE 68 04 2637 ON
WEDGE PLATE 68 04 2534A &
NYLON CAP 68 04 2539 ON
FLAT ANCHOR 68 04 2548



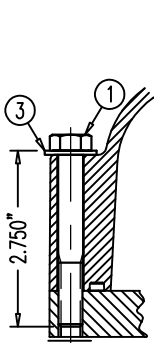
POCKET FORMER 68 04 2640
ON FLAT ANCHOR 68 04 2548



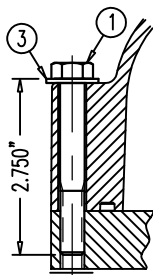
NYLON BAR CAP B36E50700 OR 50700A
ON GALV. BEARING PLATE
B26E22510, 22610, 22700, 22800,
B32E22510, 22610, 22700, 22800,
B36E22410, 22420, 22910, 22510,
22610, 22700, 22800 & NYLON
BAR CAP B66E50700 OR 50700A
ON GALV. BEARING PLATE B66E22700



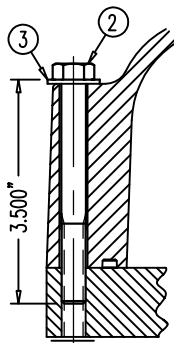
NYLON BAR CAP
B46M50700
OR 50700A
ON GALV.
BEARING PLATE
B46E22700 &
B46E22800



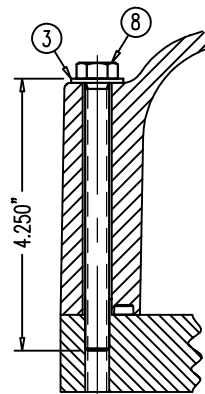
NYLON CAP
68 07 7230 OR 7230A
ON MPA 68 07 248



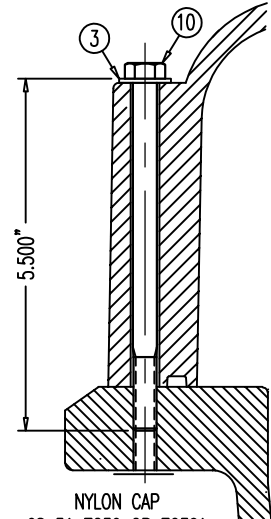
NYLON CAP
68 12 7230 OR 7230A
ON MPA 68 12 248



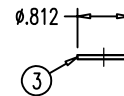
NYLON CAP
68 19 7230 OR 7230A
ON MPA 68 19 248



NYLON CAP
68 27 7230 OR 7230A
ON MPA 68 27 248



NYLON CAP
68 31 7230 OR 7230A
ON MPA 68 31 248



TYPE A NARROW WASHER
FOR 3/8"-UNC BOLT

NOTE:
THE 316L S.S. BOLTS ARE SPECIAL ORDER.
ALL WASHERS, HEX NUTS & COUPLERS HAVE
NO MARKINGS.

POS.	PART NUMBER	DISCRIPTION (ALL PARTS 316L STAINLESS STEEL UNLESS NOTED)
①	00 00 771	3/8"-16UNC HEX BOLT, 2-3/4" LONG (1" LONG THREAD)
②	00 00 772	3/8"-16UNC HEX BOLT, 3-1/2" LONG (1" LONG THREAD)
③	00 00 774	TYPE A NARROW WASHER FOR 3/8"-UNC BOLT
④	00 00 776	3/8"-16UNC COUPLER, ZINC COATED
⑤	00 00 777	3/8"-16UNC HEX NUT
⑥	00 00 778	5/16"-18UNC HEX BOLT, 7/8" LONG, ZINC PLATED
⑦	00 00 783	3/8"-16UNC HEX BOLT, 3-1/4" LONG (1" LONG THREAD)
⑧	00 00 784	3/8"-16UNC HEX BOLT, 4-1/4" LONG (FULL THREAD)
⑨	00 00 789	3/8"-16UNC CARRIAGE BOLT, 4-1/2" LONG
⑩	00 00 790	3/8"-16UNC CARRIAGE BOLT, 5-1/2" LONG

DIMENSIONS: INCH

QUALITY PLAN NUMBER:

STAINLESS STEEL 316L BOLTS AND WASHER FOR NYLON CAPS

DATE: 09-10-04 DWG: G. MALECKI CHK: E.A. APP: K.S.

THIS DRAWING, THE PERTINENT ENCLOSURES, DESCRIPTIONS, CALCULATIONS ETC. AND THEIR CONTENTS ARE THE PROPERTY OF DYWIDAG SYSTEMS INTERNATIONAL, USA, INC. THEY ARE NOT ALLOWED TO BE DUPLICATED WITHOUT OUR PERMISSION. THEY ARE ALSO NOT TO BE SHOWN OR EXPLAINED FOR ANY REASON TO A THIRD PARTY OTHER THAN FOR REASONS EXPRESSLY INTENDED BY DSI'S SUBMITTAL TO THE ORIGINAL RECEIVER. THEY HAVE TO BE RETURNED UPON REQUEST.

SCALE
1:3

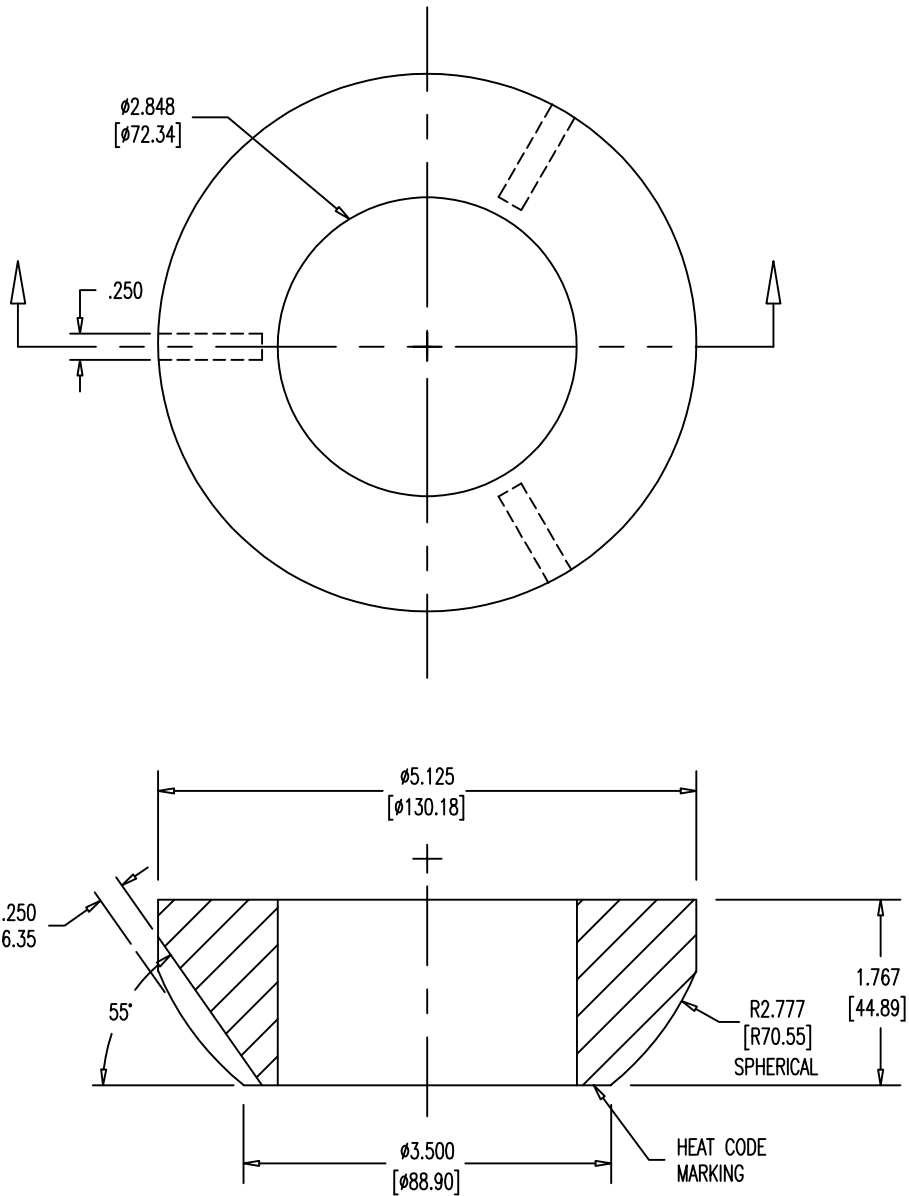
REV.	DATE	NAME	NAME
1	05/01/19	S.I.	
2	05/28/20	S.I.	

PART NUMBERS:
SEE TABLE

DRAWING NUMBER:
00 00 770

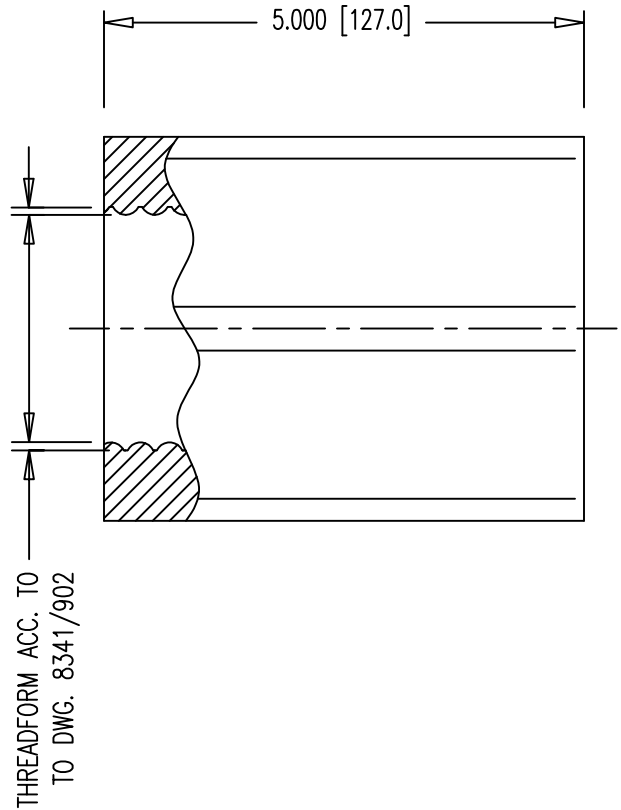
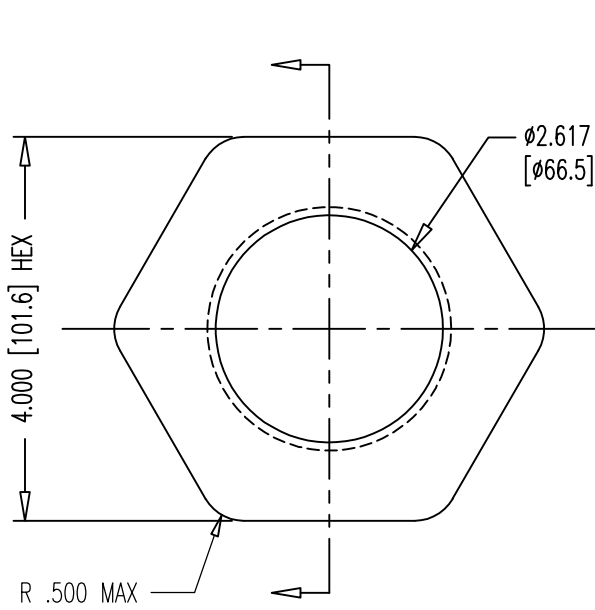
DYWIDAG-SYSTEMS INTERNATIONAL, USA, INC.
POST TENSIONING / REINFORCING UNIT PHONE: 630-739-1100
320 MARMON DRIVE - BOLINGBROOK, IL FAX: 630-739-1405





DIMENSIONS: INCH [mm] mm FOR REFERENCE ONLY		QUALITY PLAN NUMBER: QBU0094010C		TOLERANCES: ±.040 UNLESS NOTED	WEIGHT 5.8 LBS.	REV.	DATE	NAME	ECRN	PART NUMBER: B66E20210
GROUTABLE SPHERICAL WASHER FOR 2-1/2" THREADBAR				MATERIAL: ASTM A536 100-70-03	SCALE 1:1					DRAWING NUMBER: B66E20210
				DATE: 01-07-19	DWG: G. MALECKI	CHK: S.Y.	APP: S.E.			
<p>THIS DRAWING, THE PERTINENT ENCLOSURES, DESCRIPTIONS, CALCULATIONS ETC. AND THEIR CONTENTS ARE THE PROPERTY OF DYWIDAG SYSTEMS INTERNATIONAL, USA, INC. THEY ARE NOT ALLOWED TO BE DUPLICATED WITHOUT OUR PERMISSION. THEY ARE ALSO NOT TO BE SHOWN OR EXPLAINED FOR ANY REASON TO A THIRD PARTY OTHER THAN FOR REASONS EXPRESSLY INTENDED BY DSI'S SUBMITTAL TO THE ORIGINAL RECEIVER. THEY HAVE TO BE RETURNED UPON REQUEST.</p> <p>DYWIDAG-SYSTEMS INTERNATIONAL, USA, INC. 320 MARMON DRIVE - BOLINGBROOK, IL 60440 PHONE: 630-739-1100 FAX: 630-739-1405</p>										



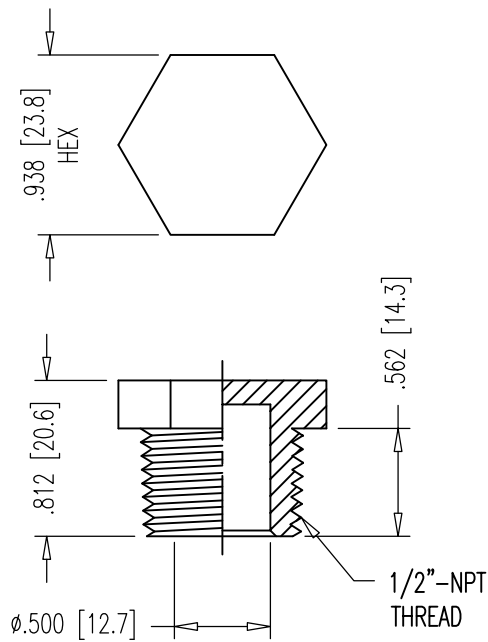


DIMENSIONS: INCH [mm] mm FOR REFERENCE ONLY		QUALITY PLAN NUMBER: QB00020700S		TOLERANCES: ±.063 UNLESS NOTED	WEIGHT ~11.8 LBS.	REV.	DATE	NAME	PART NUMBERS: B66E20251
66mm HEX NUT, FULL LOAD				MATERIAL: C1035 CD SEAMLESS MECHANICAL TUBE ASTM A519	SCALE 1:2				DRAWING NUMBER: B66E20250
				DATE: 10-09-15	DWG: S.YANG	CHK: S.Y.	APP: S.E.		


THIS DRAWING, THE PERTINENT ENCLOSURES, DESCRIPTIONS, CALCULATIONS ETC. AND THEIR CONTENTS ARE THE PROPERTY OF DYWIDAG SYSTEMS INTERNATIONAL, USA, INC. THEY ARE NOT ALLOWED TO BE DUPLICATED WITHOUT OUR PERMISSION. THEY ARE ALSO NOT TO BE SHOWN OR EXPLAINED FOR ANY REASON TO A THIRD PARTY OTHER THAN FOR REASONS EXPRESSLY INTENDED BY DSI'S SUBMITTAL TO THE ORIGINAL RECEIVER. THEY HAVE TO BE RETURNED UPON REQUEST.

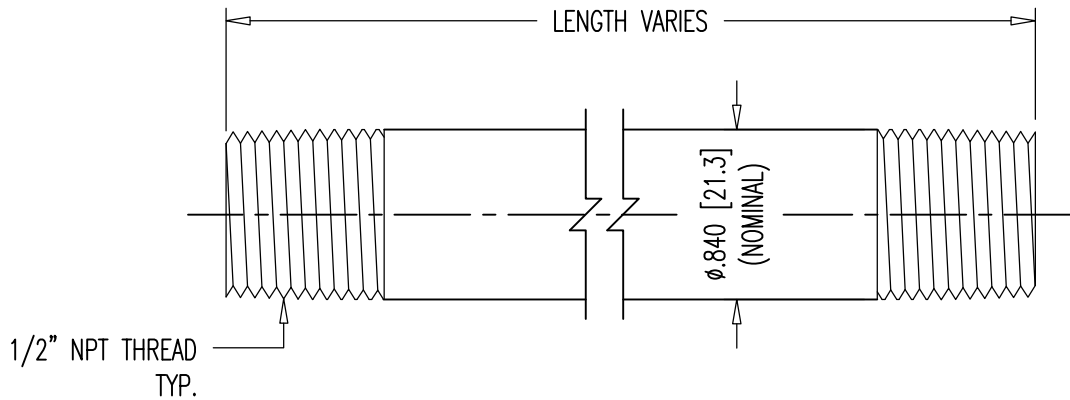
DYWIDAG-SYSTEMS INTERNATIONAL, USA, INC.
320 MARMON DRIVE - BOLINGBROOK, IL 60440
PHONE: 630-739-1100 FAX: 630-739-1405





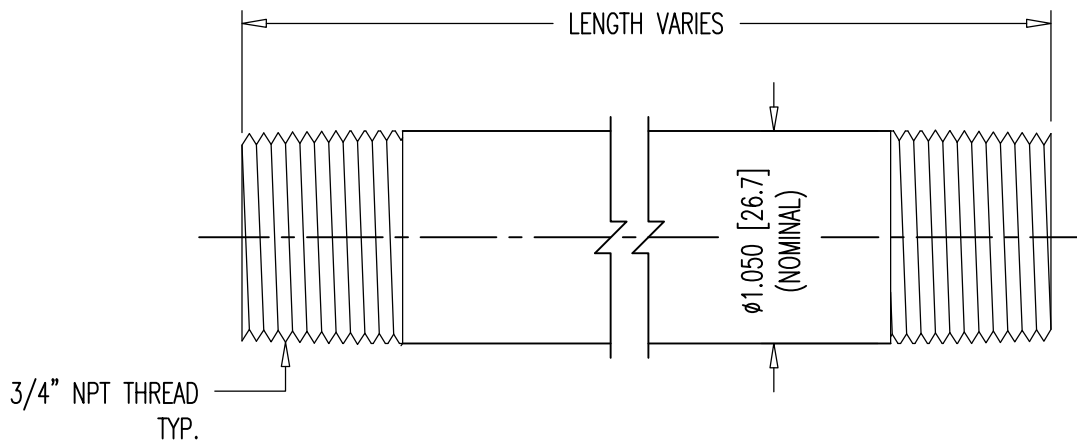
PRESSURE RATED: 150 PSI

DIMENSIONS: INCH [mm] mm FOR REFERENCE ONLY		QUALITY PLAN NUMBER:		WEIGHT .006 LBS.	REV.	DATE	NAME	ECRN	PART NUMBER: 00 00 649
1/2" NPT NYLON PLUG									
				DATE: 03-12-19	DWG: G. MALECKI	CHK: S.I.	APP: S.I.	MATERIAL: NYLON 6 COLOR: WHITE	
THIS DRAWING, THE PERTINENT ENCLOSURES, DESCRIPTIONS, CALCULATIONS ETC. AND THEIR CONTENTS ARE THE PROPERTY OF DYWIDAG SYSTEMS INTERNATIONAL, USA, INC. THEY ARE NOT ALLOWED TO BE DUPLICATED WITHOUT OUR PERMISSION. THEY ARE ALSO NOT TO BE SHOWN OR EXPLAINED FOR ANY REASON TO A THIRD PARTY OTHER THAN FOR REASONS EXPRESSLY INTENDED BY DSI's SUBMITTAL TO THE ORIGINAL RECEIVER. THEY HAVE TO BE RETURNED UPON REQUEST.				DYWIDAG-SYSTEMS INTERNATIONAL, USA, INC. 320 MARMON DRIVE - BOLINGBROOK, IL 60440 PHONE: 630-739-1100 FAX: 630-739-1405			DYWIDAG 		



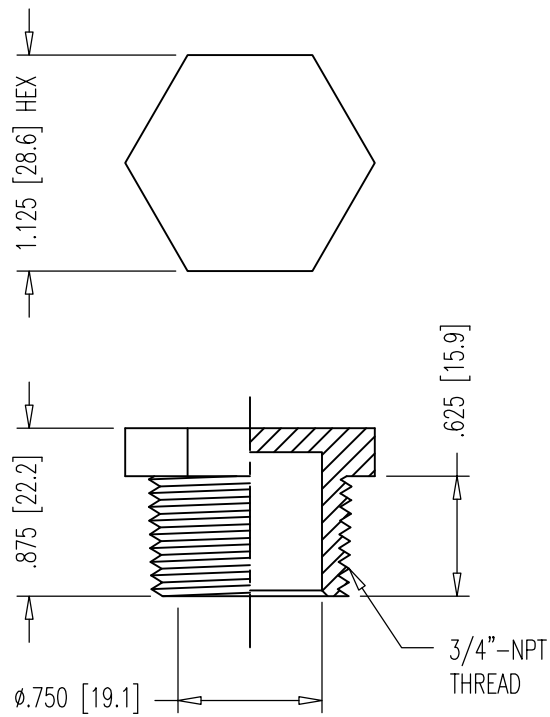
PRESSURE RATED: 150 PSI

DIMENSIONS: INCH [mm] mm FOR REFERENCE ONLY		QUALITY PLAN NUMBER: Q000000020P		REV.	DATE	NAME	PART NUMBER: 00 00 678
1/2" NPT PIPE NIPPLES				MATERIAL: SCH 40 BLACK WELDED STEEL	SCALE 1:1		DRAWING NUMBER: 00 00 678
DATE: 01-29-19	DWG: G. MALECKI	CHK: S.I.	APP: S.I.				
THIS DRAWING, THE PERTINENT ENCLOSURES, DESCRIPTIONS, CALCULATIONS ETC. AND THEIR CONTENTS ARE THE PROPERTY OF DYWIDAG SYSTEMS INTERNATIONAL, USA, INC. THEY ARE NOT ALLOWED TO BE DUPLICATED WITHOUT OUR PERMISSION. THEY ARE ALSO NOT TO BE SHOWN OR EXPLAINED FOR ANY REASON TO A THIRD PARTY OTHER THAN FOR REASONS EXPRESSLY INTENDED BY DSI's SUBMITTAL TO THE ORIGINAL RECEIVER. THEY HAVE TO BE RETURNED UPON REQUEST.				DYWIDAG-SYSTEMS INTERNATIONAL, USA, INC. 320 MARMON DRIVE - BOLINGBROOK, IL 60440 PHONE: 630-739-1100 FAX: 630-739-1405			DYWIDAG



PRESSURE RATED: 150 PSI

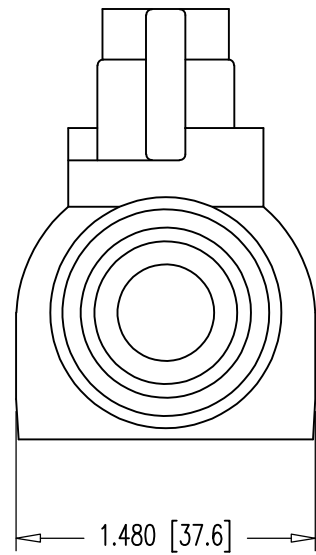
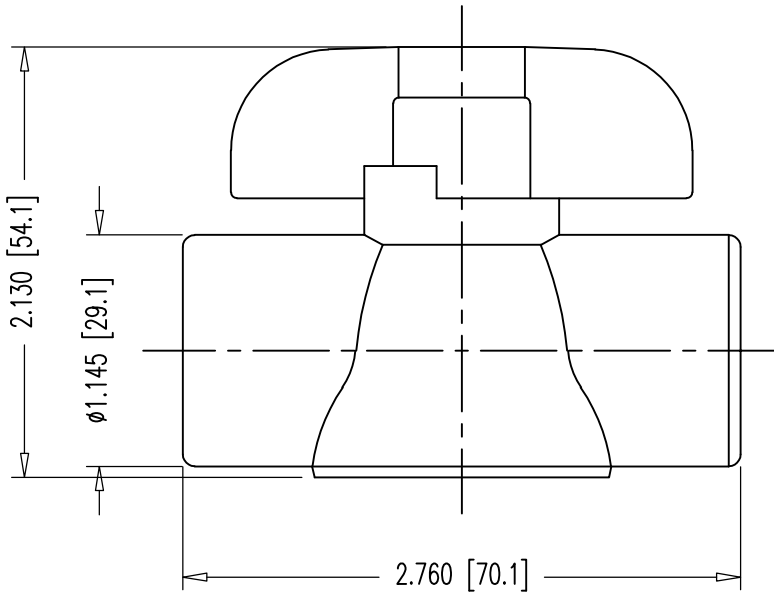
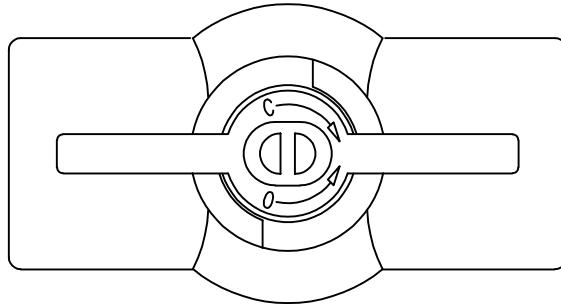
DIMENSIONS: INCH [mm] mm FOR REFERENCE ONLY	QUALITY PLAN NUMBER: Q00000020P			REV.	DATE	NAME	ECRN	PART NUMBER: 00 00 878
3/4" NPT PIPE NIPPLES		MATERIAL: SCH 40 BLACK WELDED STEEL	SCALE 1:1					DRAWING NUMBER: 00 00 878
DATE: 01-29-19	DWG: G. MALECKI	CHK: S.I.	APP: S.I.					
THIS DRAWING, THE PERTINENT ENCLOSURES, DESCRIPTIONS, CALCULATIONS ETC. AND THEIR CONTENTS ARE THE PROPERTY OF DYWIDAG SYSTEMS INTERNATIONAL, USA, INC. THEY ARE NOT ALLOWED TO BE DUPLICATED WITHOUT OUR PERMISSION. THEY ARE ALSO NOT TO BE SHOWN OR EXPLAINED FOR ANY REASON TO A THIRD PARTY OTHER THAN FOR REASONS EXPRESSLY INTENDED BY DSI'S SUBMITTAL TO THE ORIGINAL RECEIVER. THEY HAVE TO BE RETURNED UPON REQUEST.				DYWIDAG-SYSTEMS INTERNATIONAL, USA, INC. 320 MARMON DRIVE - BOLINGBROOK, IL 60440 PHONE: 630-739-1100 FAX: 630-739-1405				



PRESSURE RATED: 150 PSI

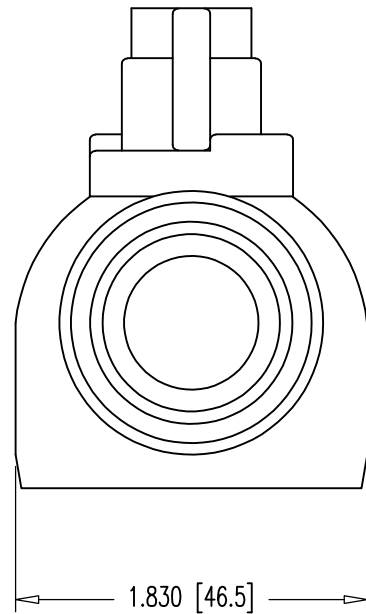
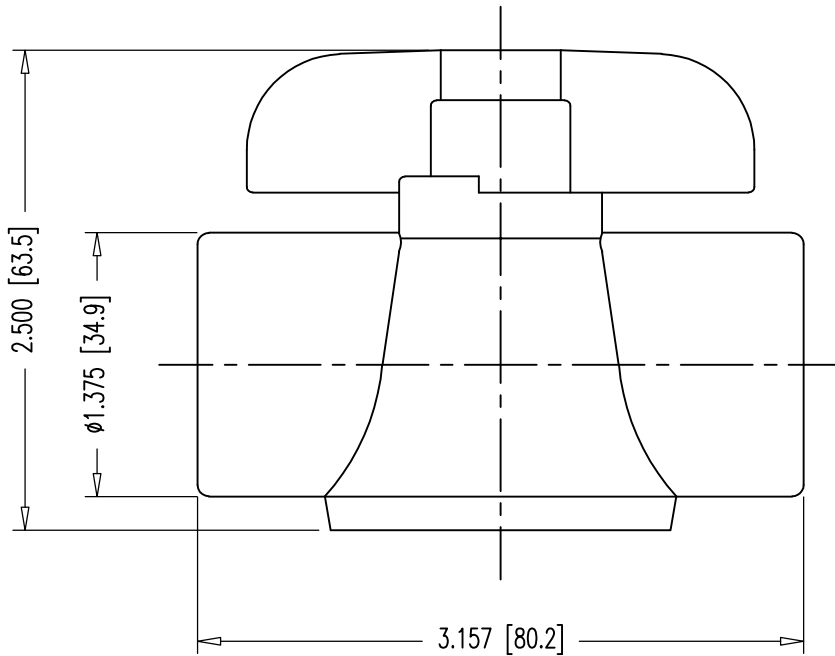
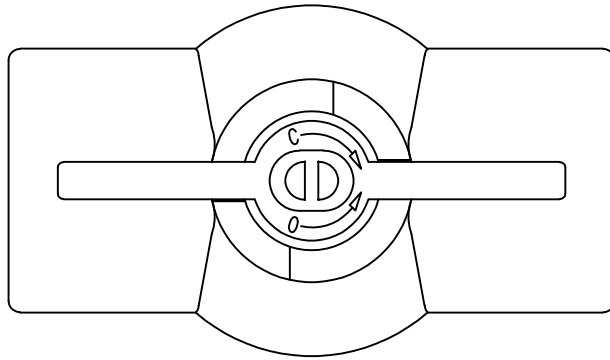
DIMENSIONS: INCH [mm] mm FOR REFERENCE ONLY		QUALITY PLAN NUMBER:		WEIGHT .009 LBS.	REV.	DATE	NAME	PART NUMBER: 00 00 849
3/4" NPT NYLON PLUG								
				DATE: 03-12-19	DWG: G. MALECKI	CHK: S.I.	APP: S.I..	DYWIDAG-SYSTEMS INTERNATIONAL, USA, INC. 320 MARMON DRIVE - BOLINGBROOK, IL 60440 PHONE: 630-739-1100 FAX: 630-739-1405
THIS DRAWING, THE PERTINENT ENCLOSURES, DESCRIPTIONS, CALCULATIONS ETC. AND THEIR CONTENTS ARE THE PROPERTY OF DYWIDAG SYSTEMS INTERNATIONAL, USA, INC. THEY ARE NOT ALLOWED TO BE DUPLICATED WITHOUT OUR PERMISSION. THEY ARE ALSO NOT TO BE SHOWN OR EXPLAINED FOR ANY REASON TO A THIRD PARTY OTHER THAN FOR REASONS EXPRESSLY INTENDED BY DSI's SUBMITTAL TO THE ORIGINAL RECEIVER. THEY HAVE TO BE RETURNED UPON REQUEST.								





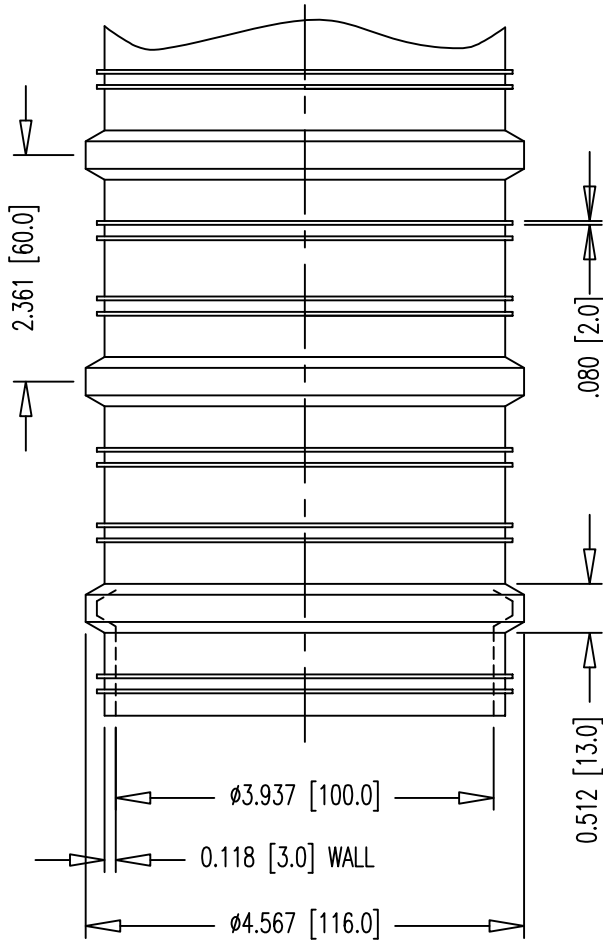
NOTE:
 PRESSURE RATED: 150 PSI.

DIMENSIONS: INCH [mm] mm FOR REFERENCE ONLY		QUALITY PLAN NUMBER:		WEIGHT 0.138 LBS.	REV.	DATE	NAME	PART NUMBER: 00 00 634
1/2" NPT BALL VALVE					1	01-11-19	S.I.	
				MATERIAL: PVC	SCALE 1:1			
DATE: 04-30-07	DWG: G. MALECKI	CHK: S.N.	APP: E.A.					DRAWING NUMBER: 00 00 634
THIS DRAWING, THE PERTINENT ENCLOSURES, DESCRIPTIONS, CALCULATIONS ETC. AND THEIR CONTENTS ARE THE PROPERTY OF DYWIDAG SYSTEMS INTERNATIONAL, USA, INC. THEY ARE NOT ALLOWED TO BE DUPLICATED WITHOUT OUR PERMISSION. THEY ARE ALSO NOT TO BE SHOWN OR EXPLAINED FOR ANY REASON TO A THIRD PARTY OTHER THAN FOR REASONS EXPRESSLY INTENDED BY DSI'S SUBMITTAL TO THE ORIGINAL RECEIVER. THEY HAVE TO BE RETURNED UPON REQUEST.				DYWIDAG-SYSTEMS INTERNATIONAL, USA, INC. 320 MARMON DRIVE - BOLINGBROOK, IL 60440 PHONE: 630-739-1100			DYWIDAG	
				FAX: 630-739-1405				



▲ NOTE:
PRESSURE RATED: 150 PSI.


DIMENSIONS: INCH [mm] mm FOR REFERENCE ONLY		QUALITY PLAN NUMBER:		WEIGHT 0.213 LBS.	REV.	DATE	NAME	PART NUMBER: 00 00 834	
3/4" NPT BALL VALVE					SCALE 1:1	1	01-11-19		S.I.
				DATE: 04-30-07		DWG: G. MALECKI		CHK: S.N.	
THIS DRAWING, THE PERTINENT ENCLOSURES, DESCRIPTIONS, CALCULATIONS ETC. AND THEIR CONTENTS ARE THE PROPERTY OF DYWIDAG SYSTEMS INTERNATIONAL, USA, INC. THEY ARE NOT ALLOWED TO BE DUPLICATED WITHOUT OUR PERMISSION. THEY ARE ALSO NOT TO BE SHOWN OR EXPLAINED FOR ANY REASON TO A THIRD PARTY OTHER THAN FOR REASONS EXPRESSLY INTENDED BY DSI's SUBMITTAL TO THE ORIGINAL RECEIVER. THEY HAVE TO BE RETURNED UPON REQUEST.				DYWIDAG-SYSTEMS INTERNATIONAL, USA, INC. 320 MARMON DRIVE - BOLINGBROOK, IL 60440 PHONE: 630-739-1100 FAX: 630-739-1405				DYWIDAG	

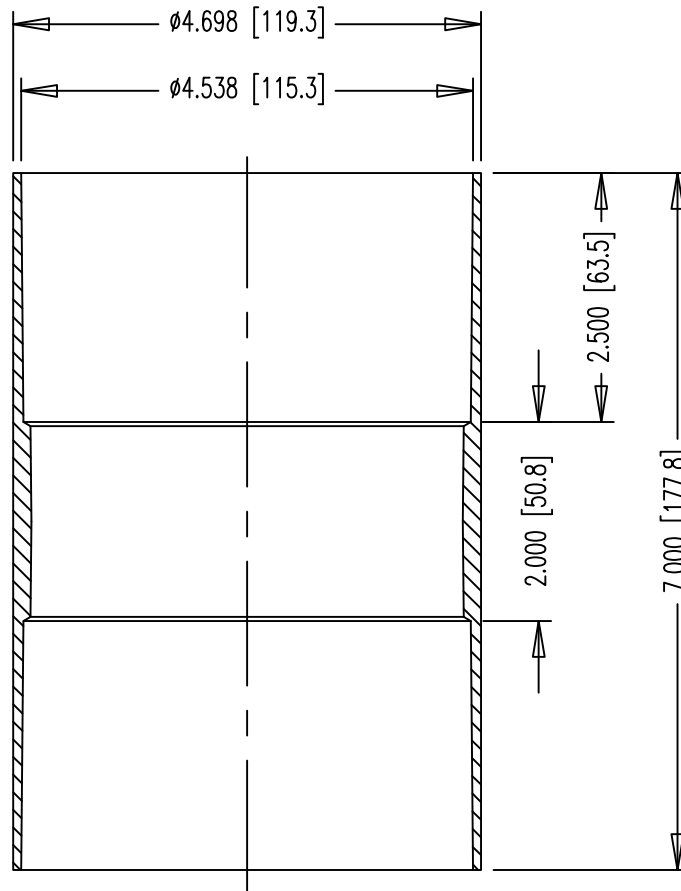
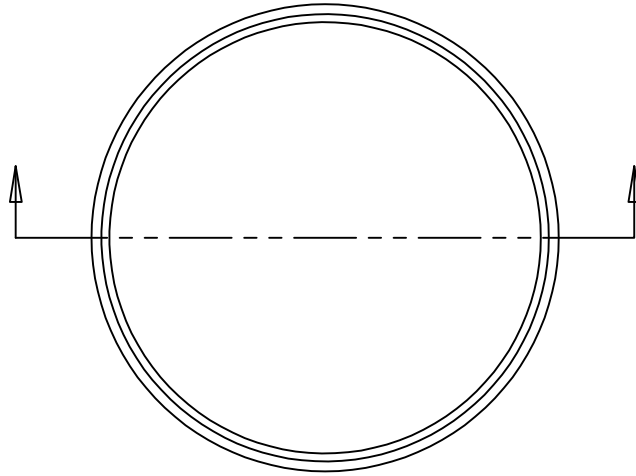


▲ MATERIAL: POLYPROPYLENE
 CELL CLASS RANGE: PP0340B44541 TO PP0340B67884
 MATERIAL MEETS FDOT SPECS. 960-2.4.3.

▲ NOTES:

1. STANDARD FIT FOR 19-0.6" & 27-0.5" STRANDS AND 2-1/2" THREADBAR.
2. Min. BENDING RADIUS, $R_{min} = 25$ FT.
3. DUCT IS DELIVERED IN STRAIGHT SECTIONS AND IS NOT INTENDED TO BE COILED.

DIMENSIONS: INCH [mm] mm FOR REFERENCE ONLY		QUALITY PLAN NUMBER: QU00041110P		TOLERANCES: ±.010 UNLESS NOTED	WEIGHT .625 LBS./FT.	REV. 1	DATE 01-11-19	NAME S.I.	PART NUMBER: U00220400
4" (100mm) CORRUGATED PP DUCT				MATERIAL: SEE ABOVE	SCALE 1:2				DRAWING NUMBER: U00220400
DATE: 09-11-97	DWG: G. MALECKI	CHK: A.W.	APP: K.S.	THIS DRAWING, THE PERTINENT ENCLOSURES, DESCRIPTIONS, CALCULATIONS ETC. AND THEIR CONTENTS ARE THE PROPERTY OF DYWIDAG SYSTEMS INTERNATIONAL, USA, INC. THEY ARE NOT ALLOWED TO BE DUPLICATED WITHOUT OUR PERMISSION. THEY ARE ALSO NOT TO BE SHOWN OR EXPLAINED FOR ANY REASON TO A THIRD PARTY OTHER THAN FOR REASONS EXPRESSLY INTENDED BY DSI'S SUBMITTAL TO THE ORIGINAL RECEIVER. THEY HAVE TO BE RETURNED UPON REQUEST.					
				DYWIDAG-SYSTEMS INTERNATIONAL, USA, INC. 320 MARMON DRIVE - BOLINGBROOK, IL 60440 PHONE: 630-739-1100 FAX: 630-739-1405				DYWIDAG 	



▲ MATERIAL: POLYPROPYLENE
 CELL CLASS RANGE: PP0340B44541 TO PP0340B67884
 MATERIAL MEETS FDOT SPECS. 960-2.4.3.

DIMENSIONS: INCH [mm] mm FOR REFERENCE ONLY		QUALITY PLAN NUMBER: QSA0028000P		TOLERANCES: ±.005 UNLESS NOTED	WEIGHT 0.47 LBS.	REV. 1	DATE 1-11-17	NAME S.I.	PART NUMBER: U00220405
Ø4" (100mm) DUCT COUPLER				MATERIAL: SEE ABOVE	SCALE 1:2				DRAWING NUMBER: U00220405
				DATE: 10-25-99	DWG: G. MALECKI	CHK: K.L.	APP: K.S.		

THIS DRAWING, THE PERTINENT ENCLOSURES, DESCRIPTIONS, CALCULATIONS ETC.
 AND THEIR CONTENTS ARE THE PROPERTY OF **DYWIDAG SYSTEMS INTERNATIONAL,
 USA, INC.** THEY ARE NOT ALLOWED TO BE DUPLICATED WITHOUT OUR PERMISSION.
 THEY ARE ALSO NOT TO BE SHOWN OR EXPLAINED FOR ANY REASON TO A THIRD
 PARTY OTHER THAN FOR REASONS EXPRESSLY INTENDED BY **DSI's** SUBMITTAL TO
 THE ORIGINAL RECEIVER. THEY HAVE TO BE RETURNED UPON REQUEST.

DYWIDAG-SYSTEMS INTERNATIONAL, USA, INC.
 320 MARMON DRIVE - BOLINGBROOK, IL 60440
 PHONE: 630-739-1100 FAX: 630-739-1405



DIMENSIONS & ORDERING INFO	P	L	A	-	XXX	-	YYY	-	ZZ	
										COLOR ▶
										SLEEVE WIDTH ▶
										SLEEVE SIZE ▶
										ADHESIVE (thickness as supplied) ▶
										BACKING (thickness as supplied) ▶
										CONFIGURATION ▶
										STANDARD ORDERING OPTIONS
										YE - YELLOW, BK - BLACK
										300mm, 450mm, 600mm, 900mm (12", 18", 24", 36")
										63mm -315mm (2-1/2" - 12")
										A - 0.75 mm (30 mils)
										L - 0.80 mm (31 mils)
										P - Tubular

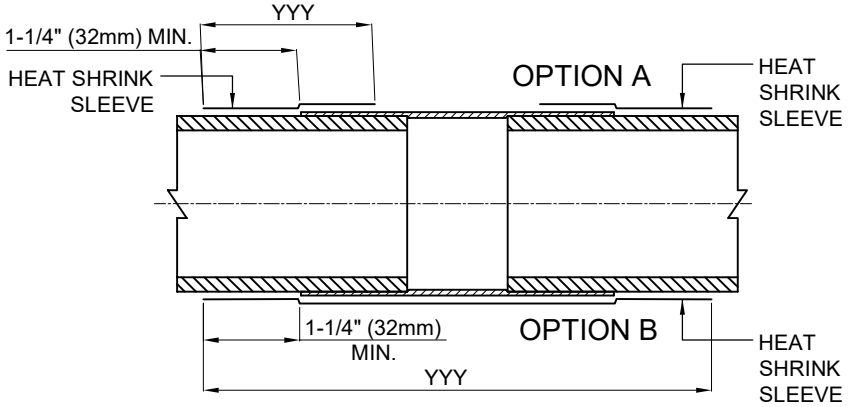
TUBULAR SLEEVE	TUBULAR SLEEVE DIAMETER	
	AS SUPPLIED	FULLY RECOVERED
PLA 63-YYY YE	3.5" [90mm]	2.5" [63mm]
PLA 90-YYY YE	4.8" [120mm]	3.3" [81mm]
PLA 115-YYY BK	5.5" [145mm]	3.8" [98mm]
PLA 125-YYY YE	6.3" [160mm]	4.3" [110mm]
PLA 160-YYY BK	7.5" [190mm]	5.2" [130mm]
⚠ PMA 90/30-YYY BK	3.5" [90mm]	1.2" [30mm]
⚠ PMA 120/40-YYY BK	4.7" [120mm]	1.6" [40mm]

YYY = SLEEVE WIDTH: 300/450/600/900/1500(mm)
 COLOR: YE = YELLOW; BK = BLACK

PMA - HIGH SHRINK SLEEVE.
 HIGH SHRINK TUBULAR BACKING.

MATERIAL:
 ACCORDING TO FDOT SPECIFICATION
 POST TENSIONING, SECTION 462 - 4, 2, 6, 3.

- NOTES:**
- ORDER DIRECT FROM CANUSA
 TEL. 281 367 - 8866
 FAX. 281 367 - 4304
 - SELECT ORDER LENGTH AS A MULTIPLE OF THE ACTUAL LENGTH.
 - OTHER COLORS SLEEVE MAY BE AVAILABLE UPON REQUEST.
 - ALWAYS HEAT THE DUCT ENDS FIRST.



NOTE:
 FOLLOW MANUFACTURER'S
 INSTALLATION INSTRUCTIONS.

	DUCT SIZE ⚠	STRAND SYSTEM	BAR SYSTEM	HEAT SHRINK SLEEVE SIZE	PART NUMBER
CORRUGATED DUCT	1" x 3" (25mm x 76mm)	4-0.6"		PLA-63-450 YE	U00044063
	2-3/8" (59mm)	7-0.6"		PLA-63-450 YE	U00044063
				1", 1-1/4", 1-3/8"	PMA-90/30-450 BK ⚠
	3" (76mm)		1 3/4"	⚠ PMA-120/40-450 BK	⚠ U00044040
	3-3/8" (85mm)	12-0.6"		PLA-90-450 YE	U00044090
	4" (100mm)		2-1/2"	PLA-90-450 YE	U00044090
	4" (100mm)	19-0.6"		PLA-115-450 BK	U00044115
	4-1/2" (115mm)	27-0.6"		PLA-125-450 YE	U00044125
5-1/8" (130mm)	31-0.6", 37-0.6"		PLA-160-450 BK	U00044160	
⚠ SMOOTH DUCT	3" SDR 17 HDPE PIPE		1-3/8"	PLA-63-450 YE	U00044063

DIMENSIONS: INCH [mm]
 mm FOR REFERENCE ONLY

**HEAT SHRINK SLEEVE SIZES
 FOR INTERNAL GROUTED APPLICATIONS**

DATE: 07-31-19 DWG: G. Malecki CHK: S.I. APP: S.I.

THIS DRAWING, THE PERTINENT ENCLOSURES, DESCRIPTIONS, CALCULATIONS ETC. AND THEIR CONTENTS ARE THE PROPERTY OF DYWIDAG SYSTEMS INTERNATIONAL, USA, INC. THEY ARE NOT ALLOWED TO BE DUPLICATED WITHOUT OUR PERMISSION. THEY ARE ALSO NOT TO BE SHOWN OR EXPLAINED FOR ANY REASON TO A THIRD PARTY OTHER THAN FOR REASONS EXPRESSLY INTENDED BY DSI'S SUBMITTAL TO THE ORIGINAL RECEIVER. THEY HAVE TO BE RETURNED UPON REQUEST.

REV.	DATE	NAME	ECRN
⚠	05-28-20	S.I.	

PART NUMBERS:

SEE TABLE ABOVE

DRAWING NUMBER:
U00044000

DYWIDAG-SYSTEMS INTERNATIONAL, USA, INC.
 320 MARMON DRIVE - BOLINGBROOK, IL 60440
 PHONE: 630-739-1100 FAX: 630-739-1405

