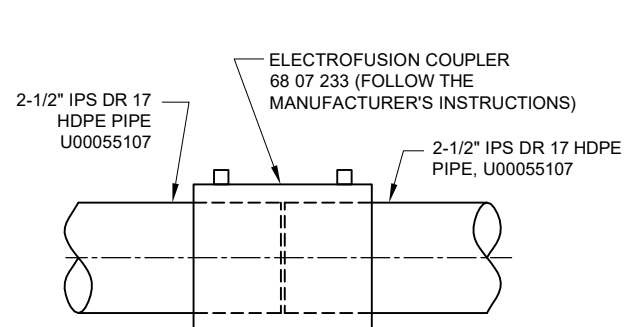
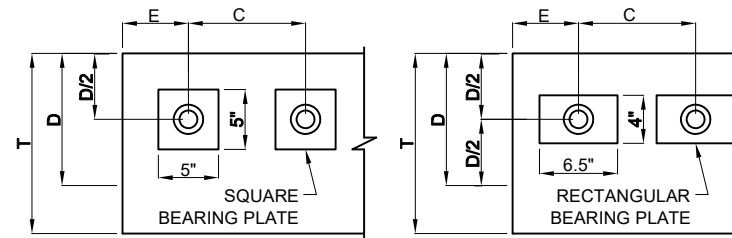


HDPE PIPE COUPLING



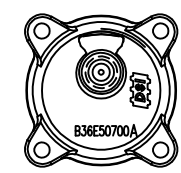
HDPE PIPE COUPLING (OPTIONAL)



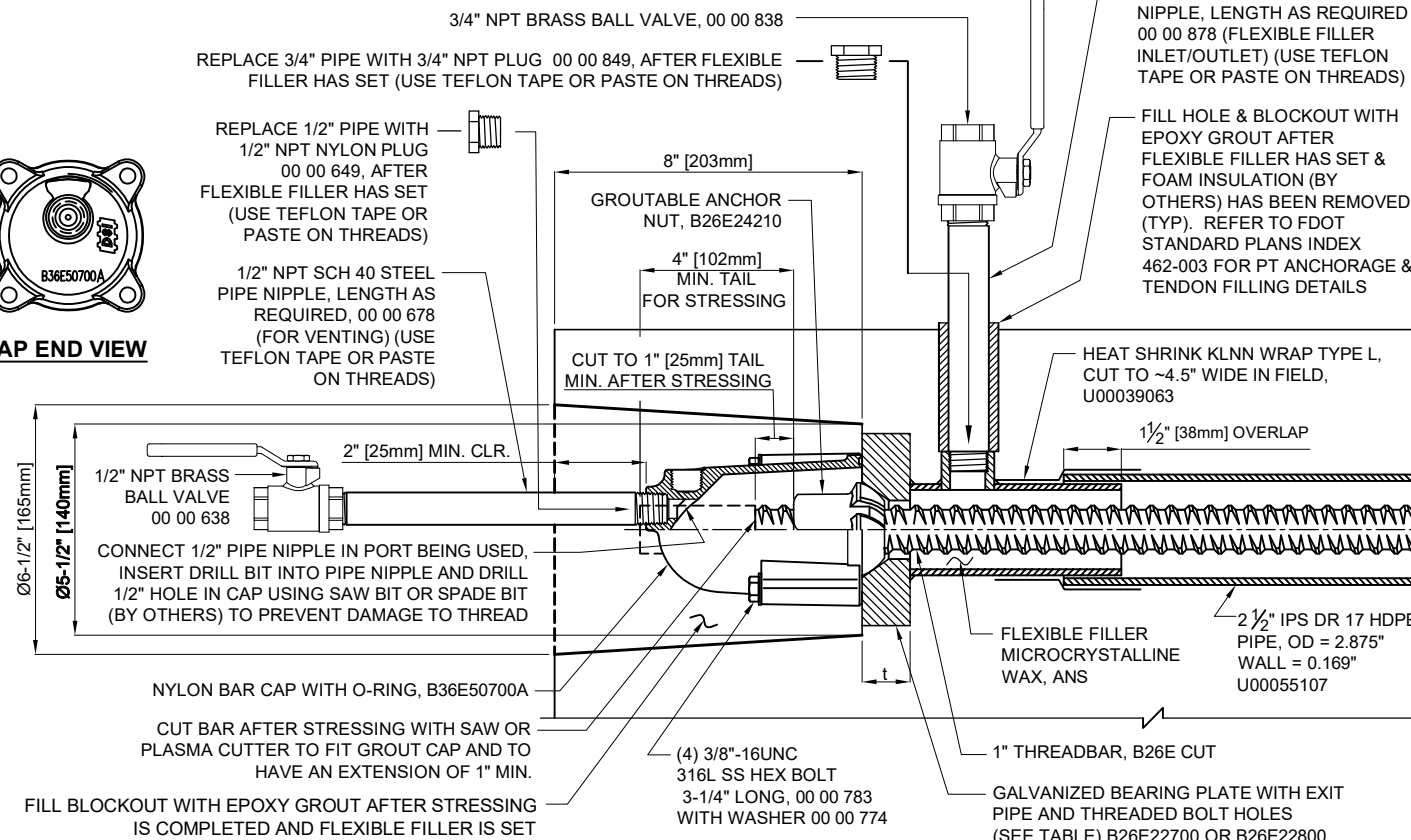
LEGEND:
E = END DISTANCE
C = CENTER TO CENTER DISTANCE
D/2 = EDGE DISTANCE

Plate Type	Concrete strength f _{ci} , ksi	Depth, D (in)	Minimum distances, in	
			End dist, E	c/c dist, C
Square	5.5	9.0	4.50	5.00
	5.0	10.0	5.00	6.00
	4.5	11.0	5.50	7.00
Rectangular	5.0	8.0	6.50	9.00
	4.5	9.0	7.31	10.63
	4.0	10.0	8.13	12.25

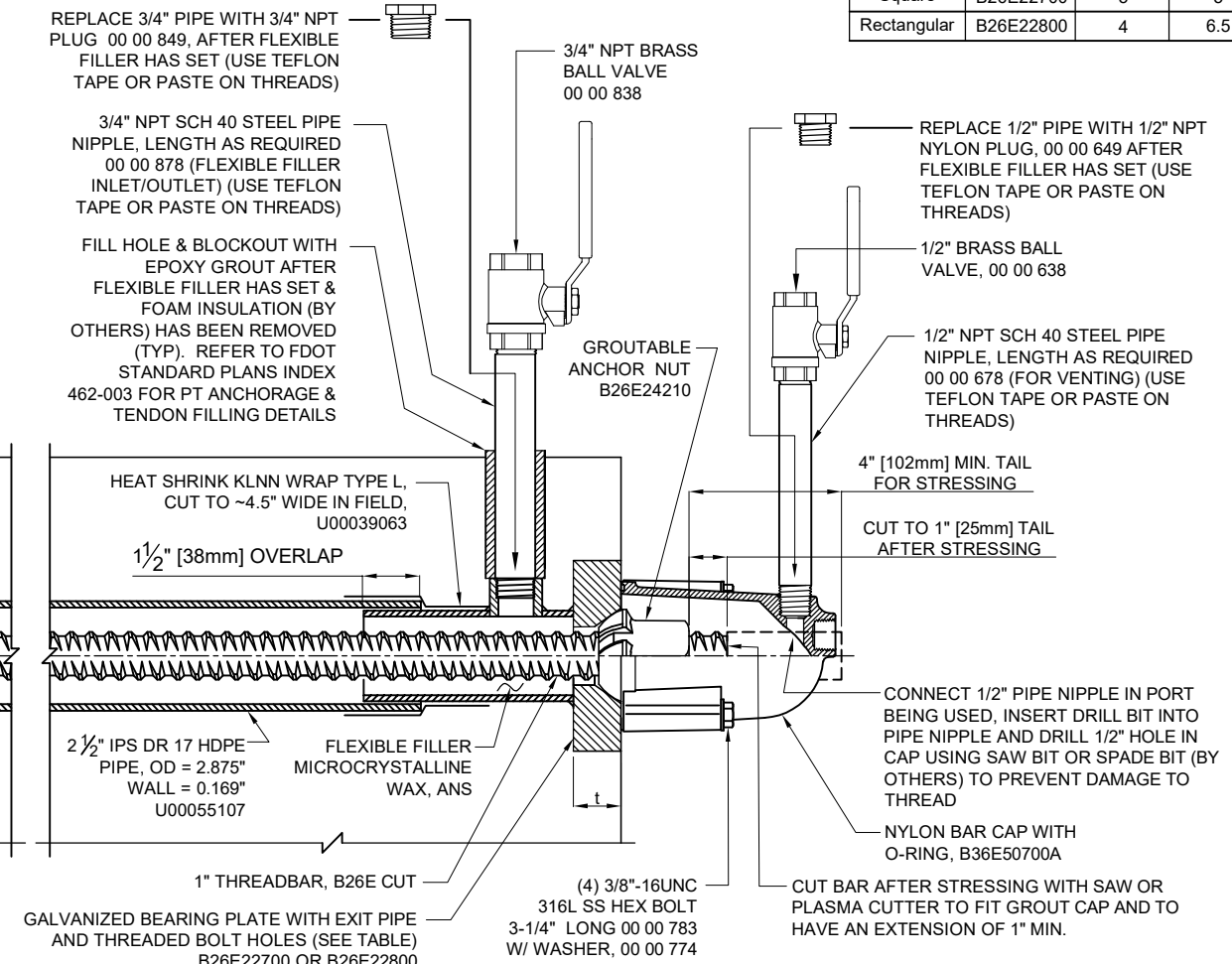
Plate Type	Part No.	Width, in	Length, in	Thickness t, in
Square	B26E22700	5	5	1.25
Rectangular	B26E22800	4	6.5	1.5



CAP END VIEW



BLOCKOUT DETAIL



SURFACE MOUNT DETAIL

WARNING: READ AND COMPLY WITH ALL APPLICABLE SAFETY AND OPERATING INSTRUCTIONS AND WARNINGS FOR THREADBAR STRESSING BEFORE STARTING ANY WORK OR OPERATION.

CAUTION: WHEN PRESSURIZING GROUT CAPS, DO NOT STAND BEHIND CAPS!

CAUTION WHEN USING HIGH STRENGTH DYWIDAG THREADBAR® (GRADE 150) DO NOT WELD TO BAR. DO NOT USE BAR AS GROUND CONNECTION FOR WELDING. DO NOT ALLOW HOT SLAG OR SPARKS TO TOUCH BAR. DO NOT DAMAGE BAR SURFACE. DO NOT USE BARS WITH KINKS OR SHARP BENDS. FAILURE TO HEED THIS WARNING COULD CAUSE BAR TO BREAK RESULTING IN INJURY OR DAMAGE

- NOTES:
- USERS SHALL REFER TO FDOT STANDARD SPECIFICATIONS AND PROJECT SPECIFIC CRITERIA FOR TENDON INSTALLATION, STRESSING, & FLEXIBLE FILLER.
 - REQUIRED REINFORCING BARS ARE NOT SHOWN ON THIS DRAWING.
 - MAXIMUM ANGULAR MISALIGNMENT WHEN USING ANCHOR NUT: ±2°.
 - CENTER TO CENTER, END AND EDGE DISTANCE DEPENDS ON THE LOCATION OF THE BAR AND CONCRETE STRENGTH, (SEE TABLE).
 - C/C DISTANCE = 2 X END DISTANCE - 2 X CONCRETE COVER (2" ASSUMED). TIGHTER C/C DISTANCE SHOULD BE EVALUATED.
 - BURSTING REINFORCEMENT IS NOT SHOWN AND WILL BE INCLUDED WITH THE SHOP DRAWINGS.
 - THREADBAR TENDONS ARE STRESSED FROM ONE END ONLY.

MATERIAL LIST		
PART NO.	DESCRIPTION	MATERIAL SPECIFICATION
B26E CUT	1" THREADBAR	ASTM A722 TYPE II STEEL
B26E22700 OR B26E22800	5"x5"x1.25" SQ. OR 4"x6.5"x1.5" RECT. BEAR. PLATE W/EXIT PIPE 2" SCH 40 STEEL PIPE 5-1/2" LONG & BOLT HOLES, GALV.	STEEL PLATE, ASTM A36, PIPE, ASTM A53 GALVANIZED
B26E24210	1" GROUTABLE ANCHOR NUT	FORGING, NORMALIZED C1045
B36E50700A	NYLON BAR CAP WITH O-RING FOR FLEXIBLE FILLER	CAP: NYLON 6, 20% GLASS FIBER FILLED O-RING: HNBR
00 00 783	3/8"-16UNC HEX BOLT, 3 1/4" LONG	316L STAINLESS STEEL
00 00 774	NARROW WASHER	
U00055107	2 1/2" IPS DR 17 HDPE PIPE	HDPE
U00039063	HEAT SHRINK KLNN WRAP, TYPE L, 18" WIDE CUT TO ~4.5" WIDE IN FIELD	ACCORD. TO FDOT SPEC. P.T. SEC. 960-2.2.1.8

MATERIAL LIST		
PART NO.	DESCRIPTION	MATERIAL SPECIFICATION
00 00 878	3/4" NPT PIPE NIPPLE, LENGTH AS REQ'D (TEMP.)	SCH 40, BLACK WELDED STEEL
00 00 838	3/4" NPT VALVE (TEMPORARY)	BRASS
00 00 849	3/4" NPT PLUG	NYLON 6, WHITE
00 00 678	1/2" NPT PIPE NIPPLE, LENGTH AS REQ'D (TEMP.)	SCH 40, BLACK WELDED STEEL
00 00 638	1/2" NPT VALVE (TEMPORARY)	BRASS
00 00 649	1/2" NPT PLUG	NYLON 6, WHITE
ANS	FLEXIBLE FILLER MICROCRYSTALLINE WAX	ACCORD. TO FDOT SPECS. 938-5
ANS	TEFLON TAPE OR PASTE FOR THREADS	-
68 07 233	ELECTROFUSION COUPLER (OPTIONAL)	COMPOSITE

DIMENSIONS: INCH [mm] FOR REFERENCE ONLY

**INTERNAL FLEXIBLE FILLER
1" (26mm) THREADBAR ASSEMBLY DRAWING**

DATE: 06/29/20 DWG: I. Tira/G. Malecki CHK: SI APP: SI

THIS DRAWING, THE PERTINENT ENCLOSURES, DESCRIPTIONS, CALCULATIONS ETC. AND THEIR CONTENTS ARE THE PROPERTY OF DYWIDAG SYSTEMS INTERNATIONAL, USA, INC. THEY ARE NOT ALLOWED TO BE DUPLICATED WITHOUT OUR PERMISSION. THEY ARE ALSO NOT TO BE SHOWN OR EXPLAINED FOR ANY REASON TO A THIRD PARTY OTHER THAN FOR REASONS EXPRESSLY INTENDED BY DSI'S SUBMITTAL TO THE ORIGINAL RECEIVER. THEY HAVE TO BE RETURNED UPON REQUEST.

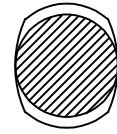
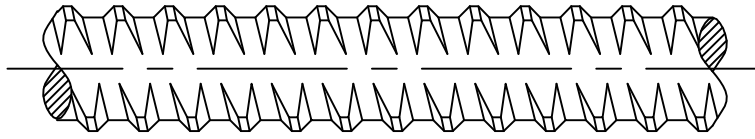
REV.	DATE	NAME	

WEIGHT

SCALE 1:5

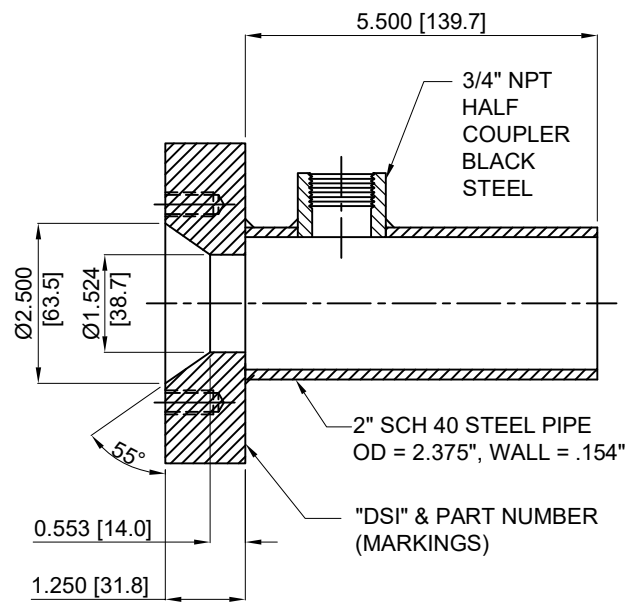
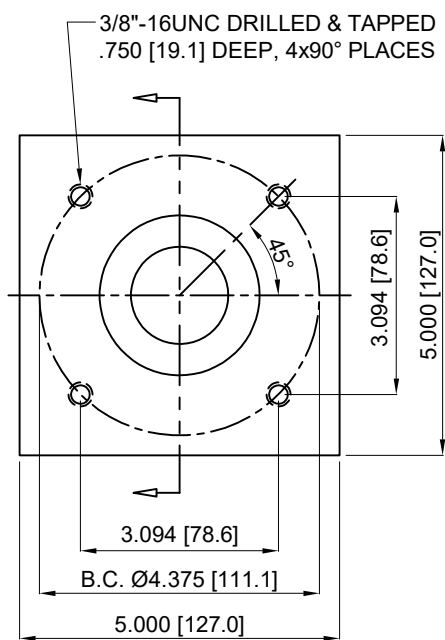
DRAWING NUMBER: PT 26E 100

RIGHT HAND THREAD



	<u>PART NUMBERS</u>	<u>SPECIFICATIONS</u>
FOR BARE BAR:	B26E CUT	ASTM A722 TYPE II
<u>PHYSICAL PROPERTIES</u>		
EFFECTIVE AREA:	0.85 SQ.IN.	
ULTIMATE STRENGTH:	150 KSI	
ULTIMATE LOAD:	127.5 KIPS	
YIELD LOAD:	102.8 KIPS	
WEIGHT:	3.01 LBS./FT.	
MAX. BAR ϕ INCL. RIBS:	1.20 IN.	
AVERAGE CORE ϕ :	1.02 IN.	
PITCH:	0.510 IN.	

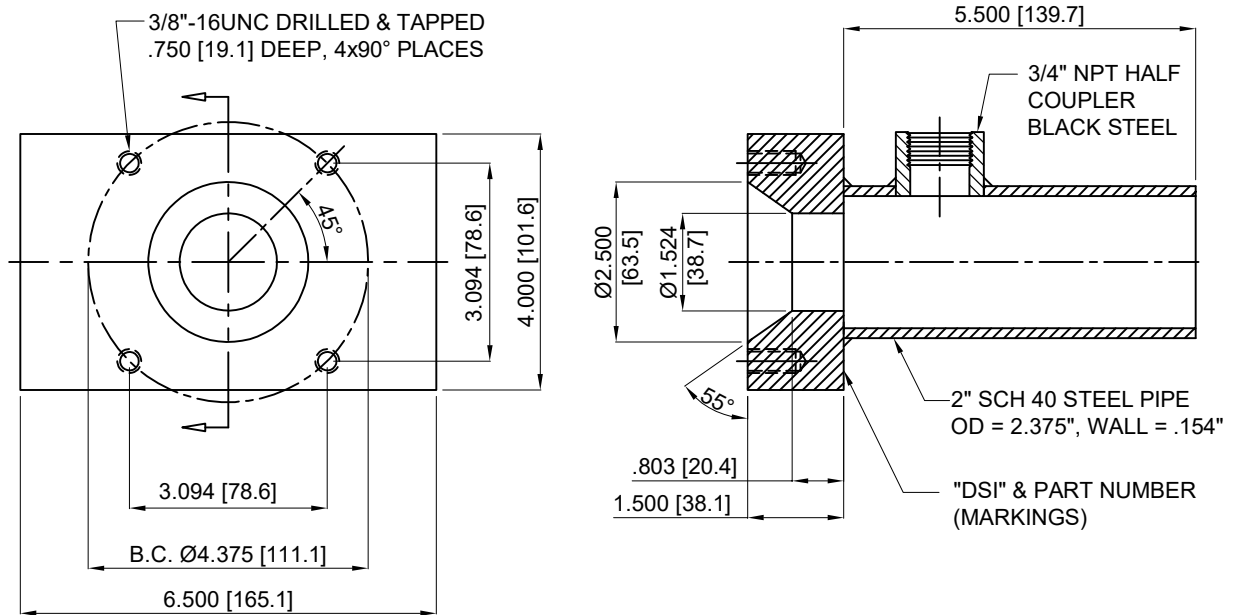
DIMENSIONS: INCH [mm] mm FOR REFERENCE ONLY	QUALITY PLAN NUMBER:			REV.	DATE	NAME	ECRN	PART NUMBER: B26E CUT
1"Ø THREADBAR GRADE 150 KSI								
DATE: 12-22-91 DWG: G. MALECKI CHK: APP: K.L.				MATERIAL: SEE ABOVE	SCALE NTS			
THIS DRAWING, THE PERTINENT ENCLOSURES, DESCRIPTIONS, CALCULATIONS ETC. AND THEIR CONTENTS ARE THE PROPERTY OF DYWIDAG SYSTEMS INTERNATIONAL, USA, INC. THEY ARE NOT ALLOWED TO BE DUPLICATED WITHOUT OUR PERMISSION. THEY ARE ALSO NOT TO BE SHOWN OR EXPLAINED FOR ANY REASON TO A THIRD PARTY OTHER THAN FOR REASONS EXPRESSLY INTENDED BY DSI'S SUBMITTAL TO THE ORIGINAL RECEIVER. THEY HAVE TO BE RETURNED UPON REQUEST.				DRAWING NUMBER: B26E CUT				
DYWIDAG-SYSTEMS INTERNATIONAL, USA, INC. 320 MARMON DRIVE - BOLINGBROOK, IL 60440 PHONE: 630-739-1100 FAX: 630-739-1405								



NOTES:

1. PLATE & PIPE GALVANIZED ACCORDING TO ASTM A123 AFTER WELDING.
2. DIMENSIONS AND TOLERANCES APPLY TO UNCOATED PLATES.
3. ENSURE THREADABILITY OF TAPPED HOLES IN COATED PLATES.
4. 2 1/2" IPS DR 17 HDPE PIPE U00055107 FITS OVER STEEL PIPE.

DIMENSIONS: INCH [mm] mm FOR REFERENCE ONLY		QUALITY PLAN NUMBER:		TOLERANCES: ±.020 UNLESS NOTED	WEIGHT ~9.80 LBS.	REV.	DATE	DWG.	CHK.	PART NUMBER B26E22700	
SQUARE BEARING PLATE WITH EXIT PIPE FOR 1" THREADBAR TO BE USED WITH HDPE PIPE				PLATE MATERIAL: SEE MAT'L SPEC. PME0021100P	SCALE 1 : 3					DRAWING NUMBER: B26E22700	
DATE: 12/13/18	DWG: I. TIRA / G. M.	CHK: SY	APP: SE	PIPE MATERIAL: ASTM A53							
THIS DRAWING, THE PERTINENT ENCLOSURES, DESCRIPTIONS, CALCULATIONS ETC. AND THEIR CONTENTS ARE THE PROPERTY OF DYWIDAG SYSTEMS INTERNATIONAL, USA, INC. THEY ARE NOT ALLOWED TO BE DUPLICATED WITHOUT OUR PERMISSION. THEY ARE ALSO NOT TO BE SHOWN OR EXPLAINED FOR ANY REASON TO A THIRD PARTY OTHER THAN FOR REASONS EXPRESSLY INTENDED BY DSI'S SUBMITTAL TO THE ORIGINAL RECEIVER. THEY HAVE TO BE RETURNED UPON REQUEST.				DYWIDAG-SYSTEMS INTERNATIONAL, USA, INC. POST TENSIONING / REINFORCING UNIT PHONE: 630-739-1100 320 MARMON DRIVE - BOLINGBROOK, IL FAX: 630-739-1405				DYWIDAG			



NOTES:

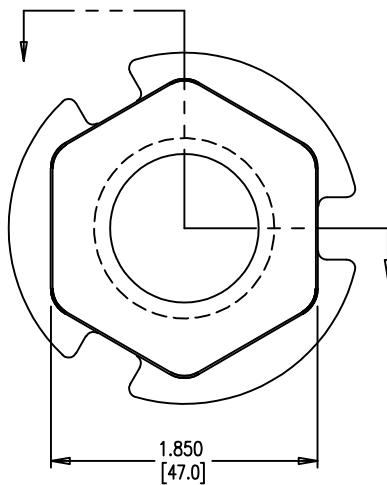
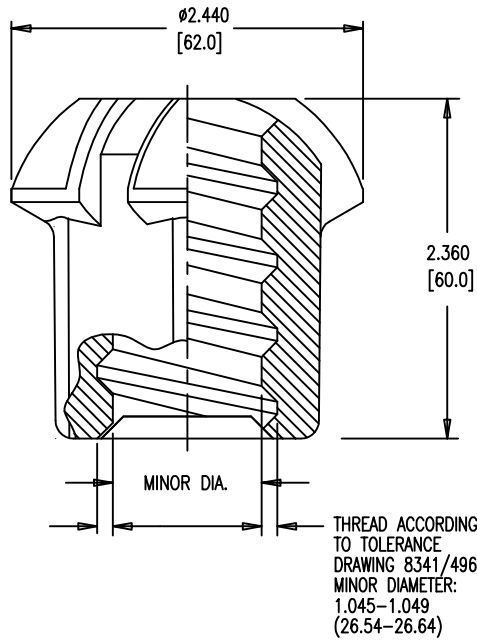
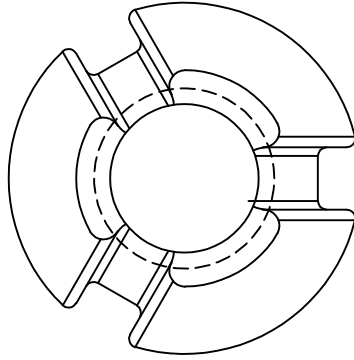
1. PLATE & PIPE GALVANIZED ACCORDING TO ASTM A123 AFTER WELDING.
2. DIMENSIONS AND TOLERANCES APPLY TO UNCOATED PLATES.
3. ENSURE THREADABILITY OF TAPPED HOLES IN COATED PLATES.
4. 2 1/2" IPS DR 17 HDPE PIPE U00055107 FITS OVER STEEL PIPE.

DIMENSIONS: INCH [mm] mm FOR REFERENCE ONLY		QUALITY PLAN NUMBER:		TOLERANCES: ±.020 UNLESS NOTED	WEIGHT ~11.8 LBS.	REV.	DATE	DWG.	CHK.	PART NUMBER B26E22800
RECT. BEARING PLATE WITH EXIT PIPE FOR 1" THREADBAR TO BE USED WITH HDPE PIPE				PLATE MATERIAL: SEE MAT'L SPEC. PME0021100P	SCALE 1 : 3					DRAWING NUMBER: B26E22800
DATE: 12/13/18	DWG: I. TIRA / G.M.	CHK: SY	APP: SE	PIPE MATERIAL: ASTM A53						

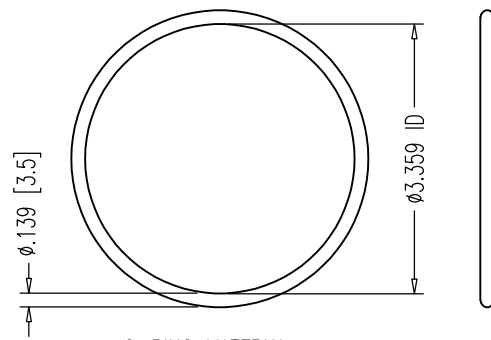
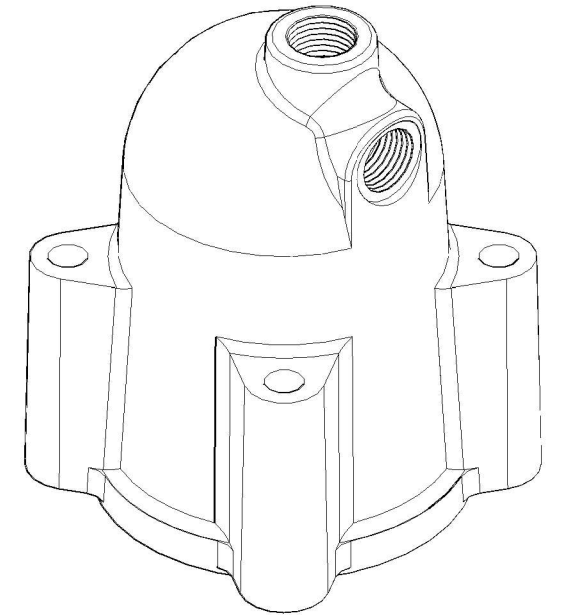
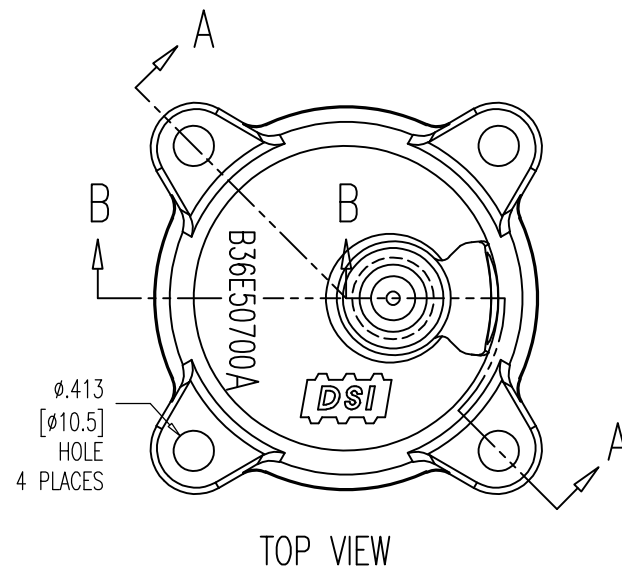
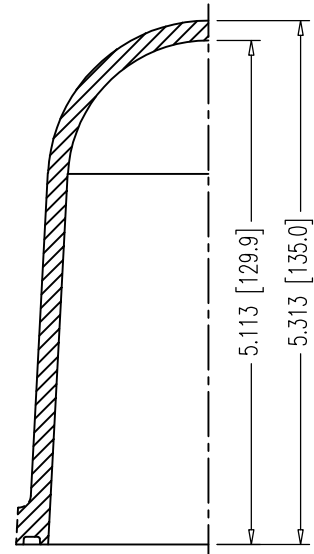
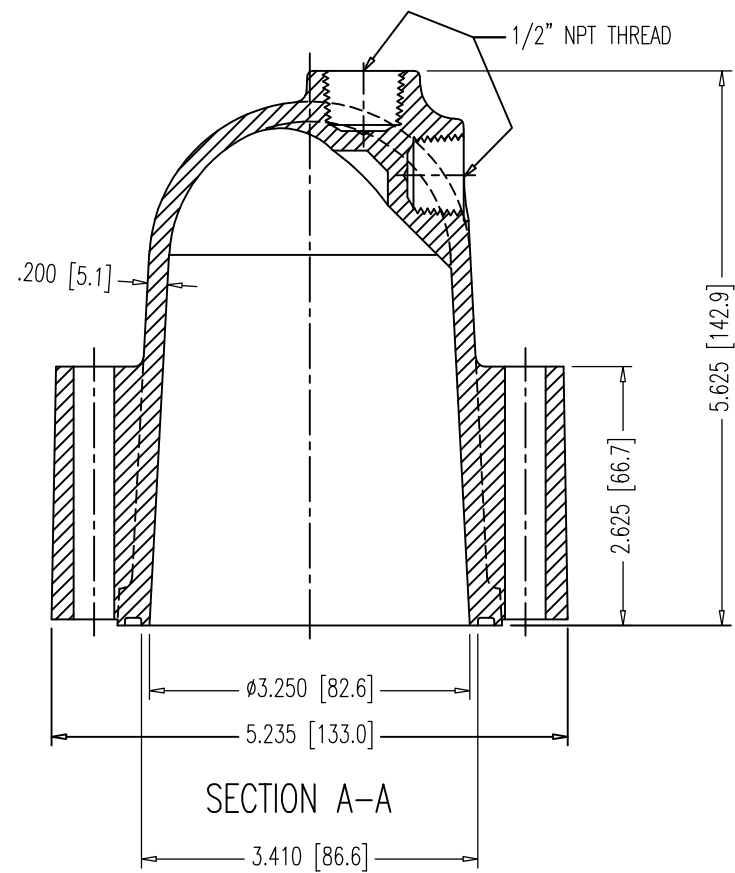
THIS DRAWING, THE PERTINENT ENCLOSURES, DESCRIPTIONS, CALCULATIONS ETC. AND THEIR CONTENTS ARE THE PROPERTY OF DYWIDAG SYSTEMS INTERNATIONAL, USA, INC. THEY ARE NOT ALLOWED TO BE DUPLICATED WITHOUT OUR PERMISSION. THEY ARE ALSO NOT TO BE SHOWN OR EXPLAINED FOR ANY REASON TO A THIRD PARTY OTHER THAN FOR REASONS EXPRESSLY INTENDED BY DSI'S SUBMITTAL TO THE ORIGINAL RECEIVER. THEY HAVE TO BE RETURNED UPON REQUEST.

DYWIDAG-SYSTEMS INTERNATIONAL, USA, INC.
 POST TENSIONING / REINFORCING UNIT PHONE: 630-739-1100
 320 MARMON DRIVE - BOLINGBROOK, IL FAX: 630-739-1405

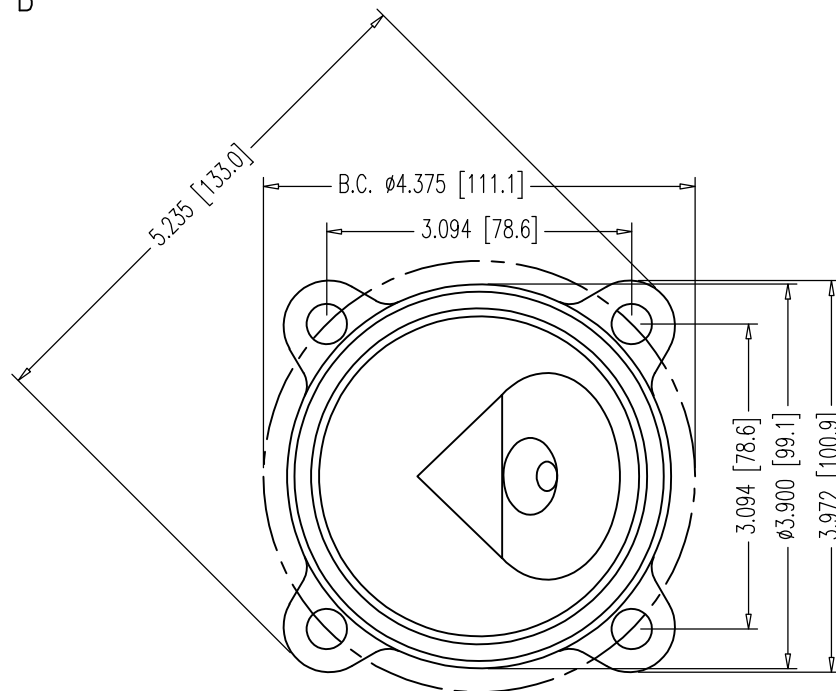




DIMENSIONS: INCH/mm mm FOR REFERENCE ONLY		QUALITY PLAN NUMBER: QBE0020100F		WEIGHT 1.5 LBS.		REV.	DATE	NAME	PART NUMBER: B26E24210
GROUTABLE ANCHOR NUTS FOR 1" Ø BAR, 150 KSI				MATERIAL: C1045 FORGING ASTM A521-CF MOD. NORMALIZED BHN = 180-220		SCALE 1:1		DRAWING NUMBER: B26E24200	
DATE: 06-07-05	DWG: G. MALECKI	CHK: H.K.	APP: K.S.						
THIS DRAWING, THE PERTINENT ENCLOSURES, DESCRIPTIONS, CALCULATIONS ETC. AND THEIR CONTENTS ARE THE PROPERTY OF DYWIDAG SYSTEMS INTERNATIONAL, USA, INC. THEY ARE NOT ALLOWED TO BE DUPLICATED WITHOUT OUR PERMISSION. THEY ARE ALSO NOT TO BE SHOWN OR EXPLAINED FOR ANY REASON TO A THIRD PARTY OTHER THAN FOR REASONS EXPRESSLY INTENDED BY DSI'S SUBMITTAL TO THE ORIGINAL RECEIVER. THEY HAVE TO BE RETURNED UPON REQUEST.				DYWIDAG-SYSTEMS INTERNATIONAL, USA, INC. 320 MARMON DRIVE - BOLINGBROOK, IL 60440 PHONE: 630-739-1100 FAX: 630-739-1405					



O-RING MATERIAL:
 HNBR MEETING FDOT
 SPECIFICATIONS 960-2.2.1.7.
 #237 O-RING
 3-3/8" x 3-5/8" x 1/8"
 SCALE: NTS



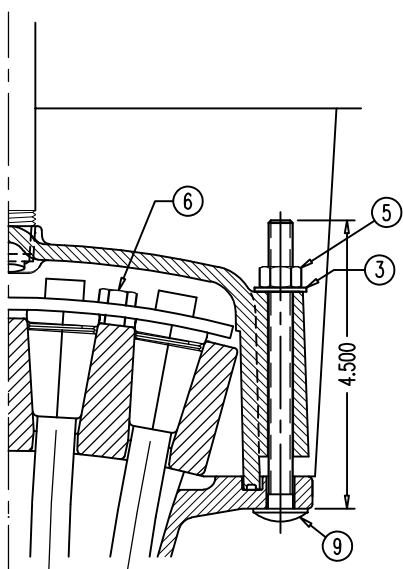
BOTTOM VIEW

NOTES:

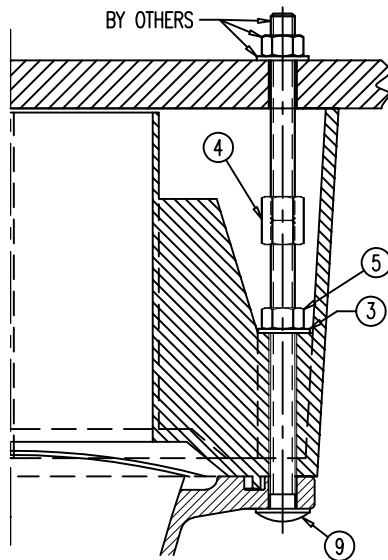
- USE 3/8"-16UNC 316L S.S. HEX BOLTS, 3-1/4" LONG 00 00 783 W/SMALL DIA. WASHER 00 00 774.
- INSTALL O-RING IN GROOVE USING DROPS OF LIQUID ADHESIVE BEFORE SHIPPING.
- THE NYLON CONFORMS TO ASTM D5989 WITH CELL CLASSIFICATION S-PA0401 (ULTIMATE STRENGTH 10,000 PSI MIN., WITH UV STABILIZER ADDED).
- DRILL 1/2" [12.7] HOLE IN PORT BEING USED-CAUTION-RECOMMEND USING HOLE SAW BIT OR SPADE BIT (BY OTHERS), BE CAREFULL TO PREVENT DAMAGE TO THREADS OR CAP.
- WHEN PRESSURIZING GROUT CAPS, DO NOT STAND BEHIND CAPS!

DIMENSIONS: INCH [mm] mm FOR REFERENCE ONLY		QUALITY PLAN NUMBER: QS60072300P		TOLERANCES: SEE TOLERANCE NOTE	WEIGHT 0.817 LBS.	REV.	DATE	NAME	PART NUMBER: B36E50700A
NYLON BAR GROUT CAP W/ O-RING FOR ALL 1" & 1-1/4" NUTS & 1-3/8" ANCHOR NUT FOR FLEXIBLE FILLER				MATERIAL: NYLON 6 20% GLASS FIBER FILLED COLOR: BLACK	SCALE 1:2 UNLESS NOTED	1	03/29/19	S.I.	DRAWING NUMBER: B36E50700A
DATE: 10-02-06	DWG: G. MALECKI	CHK: E.A.	APP: K.S.	THIS DRAWING, THE PERTINENT ENCLOSURES, DESCRIPTIONS, CALCULATIONS ETC. AND THEIR CONTENTS ARE THE PROPERTY OF DYWIDAG SYSTEMS INTERNATIONAL, USA, INC. THEY ARE NOT ALLOWED TO BE DUPLICATED WITHOUT OUR PERMISSION. THEY ARE ALSO NOT TO BE SHOWN OR EXPLAINED FOR ANY REASON TO A THIRD PARTY OTHER THAN FOR REASONS EXPRESSLY INTENDED BY DSI'S SUBMITTAL TO THE ORIGINAL RECEIVER. THEY HAVE TO BE RETURNED UPON REQUEST.					
DYWIDAG-SYSTEMS INTERNATIONAL, USA, INC. 320 MARMON DRIVE - BOLINGBROOK, IL 60440 PHONE: 630-739-1100 FAX: 630-739-1405									

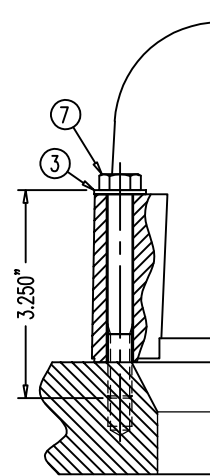




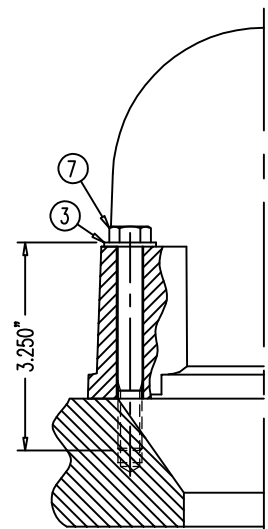
KEEPER PLATE 68 04 2637 ON
WEDGE PLATE 68 04 2534A &
NYLON CAP 68 04 2539 ON
FLAT ANCHOR 68 04 2548



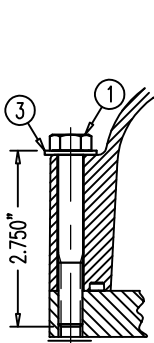
POCKET FORMER 68 04 2640
ON FLAT ANCHOR 68 04 2548



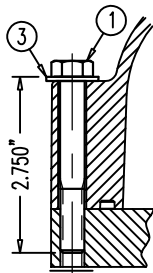
NYLON BAR CAP B36E50700 OR 50700A
ON GALV. BEARING PLATE
B26E22510, 22610, 22700, 22800,
B32E22510, 22610, 22700, 22800,
B36E22410, 22420, 22910, 22510,
22610, 22700, 22800 & NYLON
BAR CAP B66E50700 OR 50700A
ON GALV. BEARING PLATE B66E22700



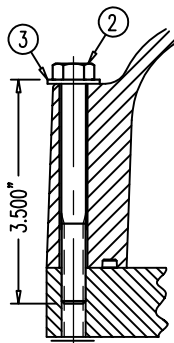
NYLON BAR CAP
B46M50700
OR 50700A
ON GALV.
BEARING PLATE
B46E22700 &
B46E22800



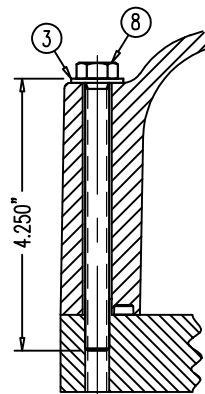
NYLON CAP
68 07 7230 OR 7230A
ON MPA 68 07 248



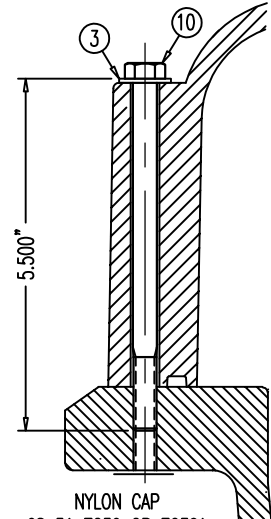
NYLON CAP
68 12 7230 OR 7230A
ON MPA 68 12 248



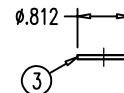
NYLON CAP
68 19 7230 OR 7230A
ON MPA 68 19 248



NYLON CAP
68 27 7230 OR 7230A
ON MPA 68 27 248



NYLON CAP
68 31 7230 OR 7230A
ON MPA 68 31 248



TYPE A NARROW WASHER
FOR 3/8"-UNC BOLT

NOTE:
THE 316L S.S. BOLTS ARE SPECIAL ORDER.
ALL WASHERS, HEX NUTS & COUPLERS HAVE
NO MARKINGS.

POS.	PART NUMBER	DISCRIPTION (ALL PARTS 316L STAINLESS STEEL UNLESS NOTED)
①	00 00 771	3/8"-16UNC HEX BOLT, 2-3/4" LONG (1" LONG THREAD)
②	00 00 772	3/8"-16UNC HEX BOLT, 3-1/2" LONG (1" LONG THREAD)
③	00 00 774	TYPE A NARROW WASHER FOR 3/8"-UNC BOLT
④	00 00 776	3/8"-16UNC COUPLER, ZINC COATED
⑤	00 00 777	3/8"-16UNC HEX NUT
⑥	00 00 778	5/16"-18UNC HEX BOLT, 7/8" LONG, ZINC PLATED
⑦	00 00 783	3/8"-16UNC HEX BOLT, 3-1/4" LONG (1" LONG THREAD)
⑧	00 00 784	3/8"-16UNC HEX BOLT, 4-1/4" LONG (FULL THREAD)
⑨	00 00 789	3/8"-16UNC CARRIAGE BOLT, 4-1/2" LONG
⑩	00 00 790	3/8"-16UNC CARRIAGE BOLT, 5-1/2" LONG

DIMENSIONS: INCH

QUALITY PLAN NUMBER:

STAINLESS STEEL 316L BOLTS AND WASHER FOR NYLON CAPS

DATE: 09-10-04 DWG: G. MALECKI CHK: E.A. APP: K.S.

THIS DRAWING, THE PERTINENT ENCLOSURES, DESCRIPTIONS, CALCULATIONS ETC. AND THEIR CONTENTS ARE THE PROPERTY OF DYWIDAG SYSTEMS INTERNATIONAL, USA, INC. THEY ARE NOT ALLOWED TO BE DUPLICATED WITHOUT OUR PERMISSION. THEY ARE ALSO NOT TO BE SHOWN OR EXPLAINED FOR ANY REASON TO A THIRD PARTY OTHER THAN FOR REASONS EXPRESSLY INTENDED BY DSI'S SUBMITTAL TO THE ORIGINAL RECEIVER. THEY HAVE TO BE RETURNED UPON REQUEST.

SCALE
1:3

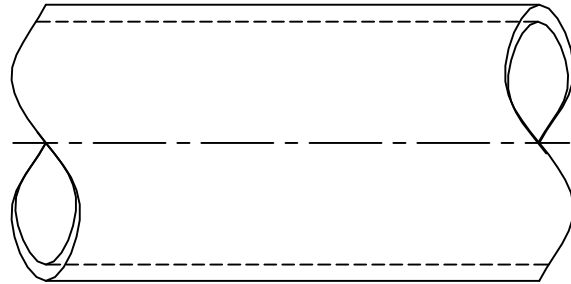
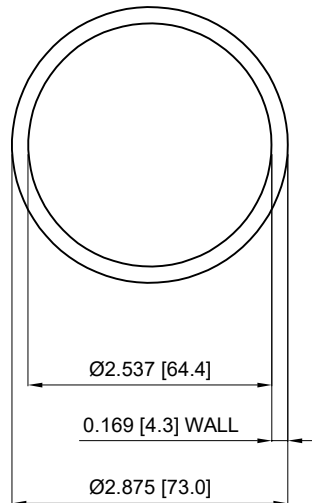
REV.	DATE	NAME	NAME
1	05/01/19	S.I.	
2	05/28/20	S.I.	

PART NUMBERS:
SEE TABLE

DRAWING NUMBER:
00 00 770

DYWIDAG-SYSTEMS INTERNATIONAL, USA, INC.
POST TENSIONING / REINFORCING UNIT PHONE: 630-739-1100
320 MARMON DRIVE - BOLINGBROOK, IL FAX: 630-739-1405



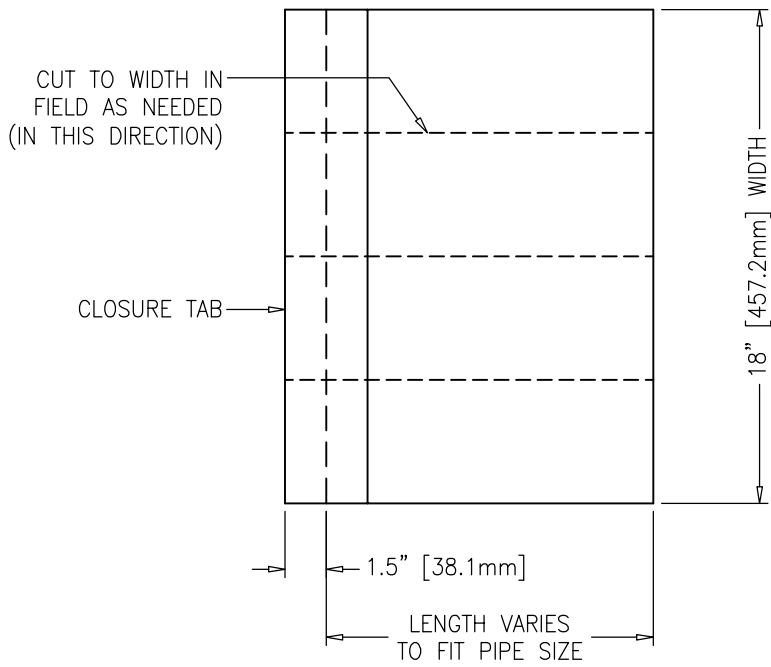


MATERIAL: 2 1/2" IPS DR 17 HDPE PIPE.

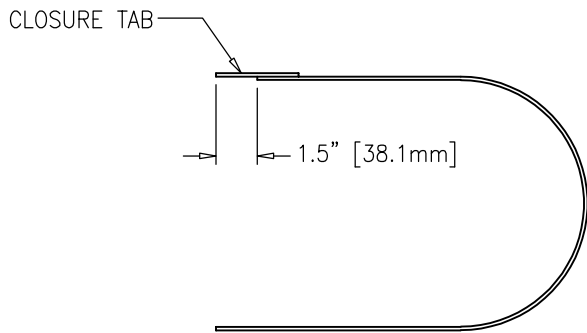
SPECIFICATIONS:

1. PIPE SHALL BE OF HIGH-DENSITY POLYETHYLENE AND SHALL HAVE A MAXIMUM DIMENSION RATIO (DR) OF 17 AS ESTABLISHED BY EITHER ASTM D3035 OR ASTM F714, AS APPROPRIATE FOR MANUFACTURING PROCESS USED.
2. PIPE SHALL HAVE A MINIMUM PRESSURE RATING OF 125 PSI.
3. MEETS REQUIREMENTS OF ASTM D3350 WITH A MINIMUM CELL CLASS OF 445574C.
4. CONTAINS ANTIOXIDANTS WITH A MINIMUM OXIDATIVE-INDUCTION TIME (OIT) ACCORDING TO ASTM D3895 OF 40 MINUTES.
5. REMOLDED FINISHED MATERIAL HAS A MINIMUM FAILURE TIME OF THREE HOURS WHEN TESTED FOR STRESS CRACK RESISTANCE USING ASTM F2136 AT AN APPLIED STRESS OF 348 PSI.
6. MINIMUM BEND RADIUS = 20 FT.

DIMENSIONS: INCH [mm] mm FOR REFERENCE ONLY		QUALITY PLAN NUMBER:		TOLERANCES:	WEIGHT	REV.	DATE	DWG.	CHK.	PART NUMBER
2-1/2" SMOOTH HDPE PIPE FOR FLEXIBLE FILLER TENDON				UNLESS NOTED	0.63 LBS./FT.					U00055107
				MATERIAL SEE ABOVE	SCALE 1 : 2					DRAWING NUMBER: U00055107
DATE: 02/27/19	DWG: I. TIRA	CHK: SI	APP: SI							
<small>THIS DRAWING, THE PERTINENT ENCLOSURES, DESCRIPTIONS, CALCULATIONS ETC. AND THEIR CONTENTS ARE THE PROPERTY OF DYWIDAG SYSTEMS INTERNATIONAL, USA, INC. THEY ARE NOT ALLOWED TO BE DUPLICATED WITHOUT OUR PERMISSION. THEY ARE ALSO NOT TO BE SHOWN OR EXPLAINED FOR ANY REASON TO A THIRD PARTY OTHER THAN FOR REASONS EXPRESSLY INTENDED BY DSI'S SUBMITTAL TO THE ORIGINAL RECEIVER. THEY HAVE TO BE RETURNED UPON REQUEST.</small>				DYWIDAG-SYSTEMS INTERNATIONAL, USA, INC. POST TENSIONING / REINFORCING UNIT PHONE: 630-739-1100 DYWIDAG 320 MARMON DRIVE - BOLINGBROOK, IL FAX: 630-739-1405						



TOP VIEW



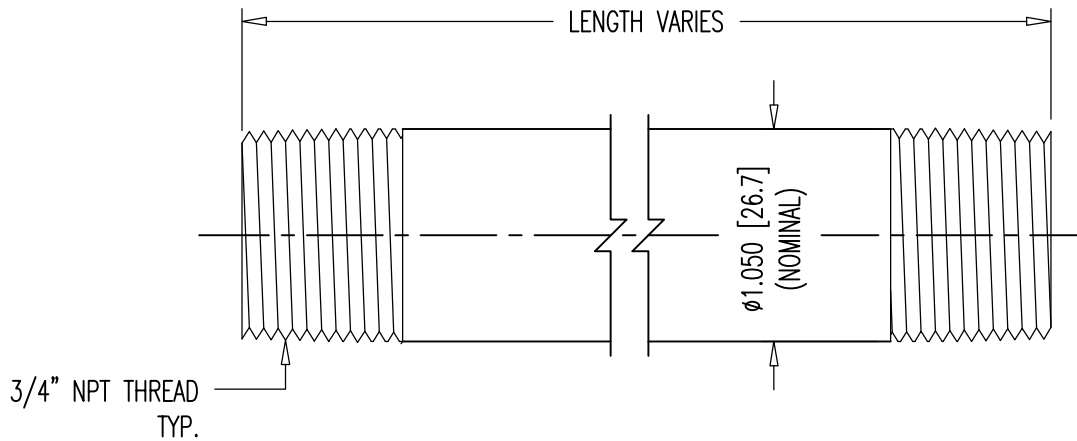
END VIEW
(NOT TO SCALE)

NOTE:
FOLLOW MANUFACTURER'S
INSTALLATION INSTRUCTIONS.

PIPE SIZE	STRAND SYSTEM	BAR SYSTEM	HEAT SHRINK SLEEVE SIZE	PART NUMBER
2 1/2" IPS DR 17	7-0.6"	1", 1 1/4", 1 3/8"	KLNN/L 63-450 BK	U00039063
3" SDR 17	12-0.6"	1 3/4", 1 3/8"	KLNN/L 90-450 BK	U00039090
4" SDR 17	19-0.6"	2 1/2", 3"	KLNN/L 115-450 BK	U00039115
5" SDR 17	27-0.6" & 31-0.6"		KLNN/L 125-450 BK	U00039125



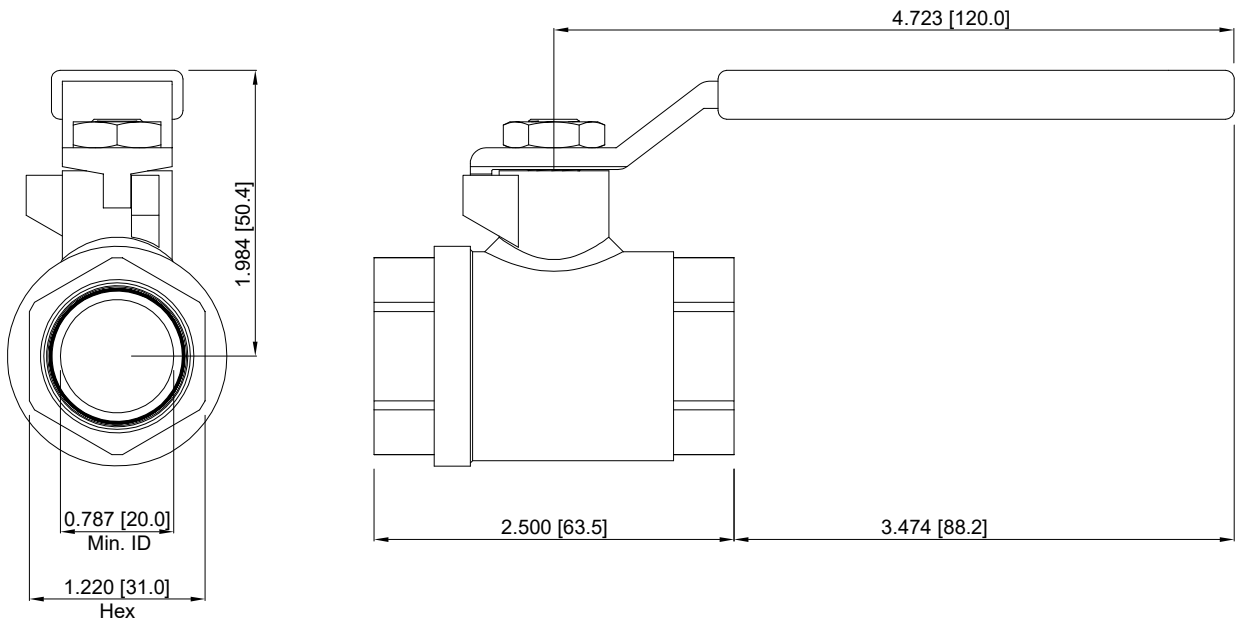
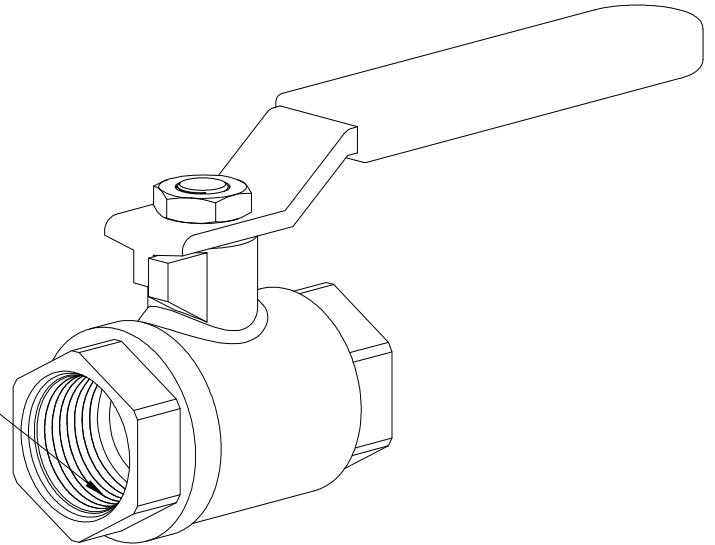
DIMENSIONS: INCH [mm] mm FOR REFERENCE ONLY		QUALITY PLAN NUMBER:		REV.		DATE	NAME	PART NUMBERS:	
KLNN HEAT SHRINK SLEEVE				MATERIAL: POLYOLEFIN		SCALE XX	05-28-20	SI	U00039063
				MEETS FDOT SPECS 960-2.2.1.8 FOR FLEXIBLE FILLER					U00039090
DATE: 02-21-19	DWG: G. MALECKI	CHK: S.I.	APP: S.I.					U00039115	
THIS DRAWING, THE PERTINENT ENCLOSURES, DESCRIPTIONS, CALCULATIONS ETC. AND THEIR CONTENTS ARE THE PROPERTY OF DYWIDAG SYSTEMS INTERNATIONAL, USA, INC. THEY ARE NOT ALLOWED TO BE DUPLICATED WITHOUT OUR PERMISSION. THEY ARE ALSO NOT TO BE SHOWN OR EXPLAINED FOR ANY REASON TO A THIRD PARTY OTHER THAN FOR REASONS EXPRESSLY INTENDED BY DSI'S SUBMITTAL TO THE ORIGINAL RECEIVER. THEY HAVE TO BE RETURNED UPON REQUEST.				Dywidag-Systems International, USA, Inc.		320 MARMON DRIVE - BOLINGBROOK, IL 60440		DRAWING NUMBER:	
				PHONE: 630-739-1100		FAX: 630-739-1405		U00039000	
								DYWIDAG	



PRESSURE RATED: 150 PSI

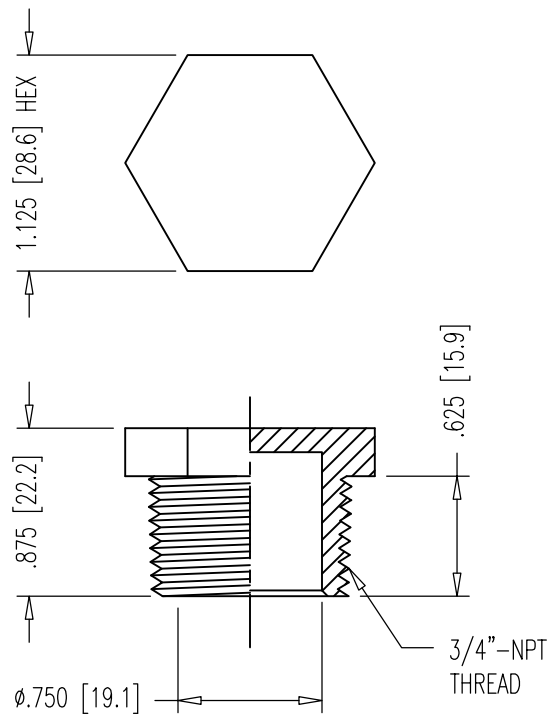
DIMENSIONS: INCH [mm] mm FOR REFERENCE ONLY		QUALITY PLAN NUMBER: Q00000020P		REV.	DATE	NAME	ECRN	PART NUMBER: 00 00 878	
3/4" NPT PIPE NIPPLES				MATERIAL:	SCALE 1:1				DRAWING NUMBER: 00 00 878
				DATE: 01-29-19 DWG: G. MALECKI CHK: S.I. APP: S.I.			SCH 40 BLACK WELDED STEEL		
THIS DRAWING, THE PERTINENT ENCLOSURES, DESCRIPTIONS, CALCULATIONS ETC. AND THEIR CONTENTS ARE THE PROPERTY OF DYWIDAG SYSTEMS INTERNATIONAL, USA, INC. THEY ARE NOT ALLOWED TO BE DUPLICATED WITHOUT OUR PERMISSION. THEY ARE ALSO NOT TO BE SHOWN OR EXPLAINED FOR ANY REASON TO A THIRD PARTY OTHER THAN FOR REASONS EXPRESSLY INTENDED BY DSI's SUBMITTAL TO THE ORIGINAL RECEIVER. THEY HAVE TO BE RETURNED UPON REQUEST.				DYWIDAG-SYSTEMS INTERNATIONAL, USA, INC. 320 MARMON DRIVE - BOLINGBROOK, IL 60440 PHONE: 630-739-1100 FAX: 630-739-1405				DYWIDAG	

3/4" NPT, 14 THREADS PER INCH,
0.55" THREAD ENGAGEMENT



PRESSURE RATED: 150 PSI

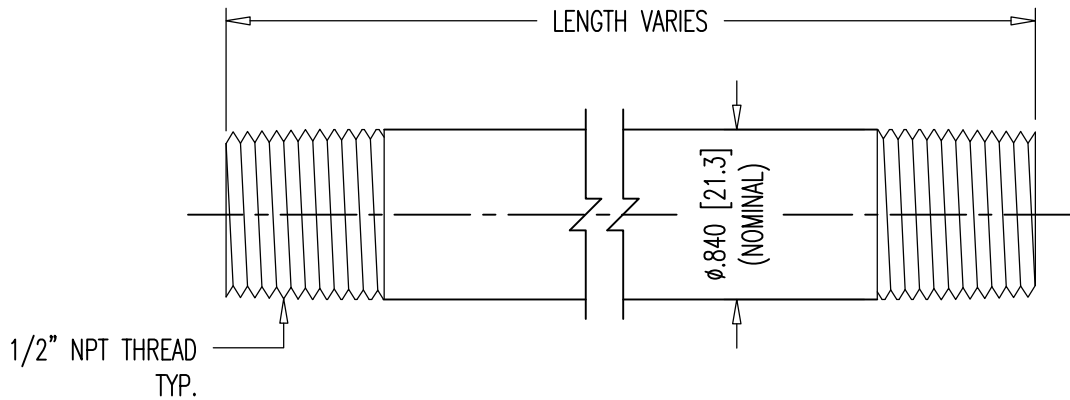
DIMENSIONS: INCH [mm] mm FOR REFERENCE ONLY		QUALITY PLAN NUMBER:		WEIGHT	REV.	DATE	NAME	PART NUMBER
3/4" BALL VALVE				0.77 LBS.				00 00 838
				MATERIAL: BRASS	SCALE 3/4" = 1"			
DATE: 02/08/19	DWG: I. TIRA	CHK: SY	APP: SE					
THIS DRAWING, THE PERTINENT ENCLOSURES, DESCRIPTIONS, CALCULATIONS ETC. AND THEIR CONTENTS ARE THE PROPERTY OF DYWIDAG SYSTEMS INTERNATIONAL, USA, INC. THEY ARE NOT ALLOWED TO BE DUPLICATED WITHOUT OUR PERMISSION. THEY ARE ALSO NOT TO BE SHOWN OR EXPLAINED FOR ANY REASON TO A THIRD PARTY OTHER THAN FOR REASONS EXPRESSLY INTENDED BY DSI'S SUBMITTAL TO THE ORIGINAL RECEIVER. THEY HAVE TO BE RETURNED UPON REQUEST.				DYWIDAG-SYSTEMS INTERNATIONAL, USA, INC. POST TENSIONING / REINFORCING UNIT PHONE: 630-739-1100 DYWIDAG 320 MARMON DRIVE - BOLINGBROOK, IL FAX: 630-739-1405				




PRESSURE RATED: 150 PSI

DIMENSIONS: INCH [mm] mm FOR REFERENCE ONLY		QUALITY PLAN NUMBER:		WEIGHT .009 LBS.	REV.	DATE	NAME	PART NUMBER: 00 00 849
3/4" NPT NYLON PLUG								
				DATE: 03-12-19	DWG: G. MALECKI	CHK: S.I.	APP: S.I..	DYWIDAG-SYSTEMS INTERNATIONAL, USA, INC. 320 MARMON DRIVE - BOLINGBROOK, IL 60440 PHONE: 630-739-1100 FAX: 630-739-1405
THIS DRAWING, THE PERTINENT ENCLOSURES, DESCRIPTIONS, CALCULATIONS ETC. AND THEIR CONTENTS ARE THE PROPERTY OF DYWIDAG SYSTEMS INTERNATIONAL, USA, INC. THEY ARE NOT ALLOWED TO BE DUPLICATED WITHOUT OUR PERMISSION. THEY ARE ALSO NOT TO BE SHOWN OR EXPLAINED FOR ANY REASON TO A THIRD PARTY OTHER THAN FOR REASONS EXPRESSLY INTENDED BY DSI's SUBMITTAL TO THE ORIGINAL RECEIVER. THEY HAVE TO BE RETURNED UPON REQUEST.								

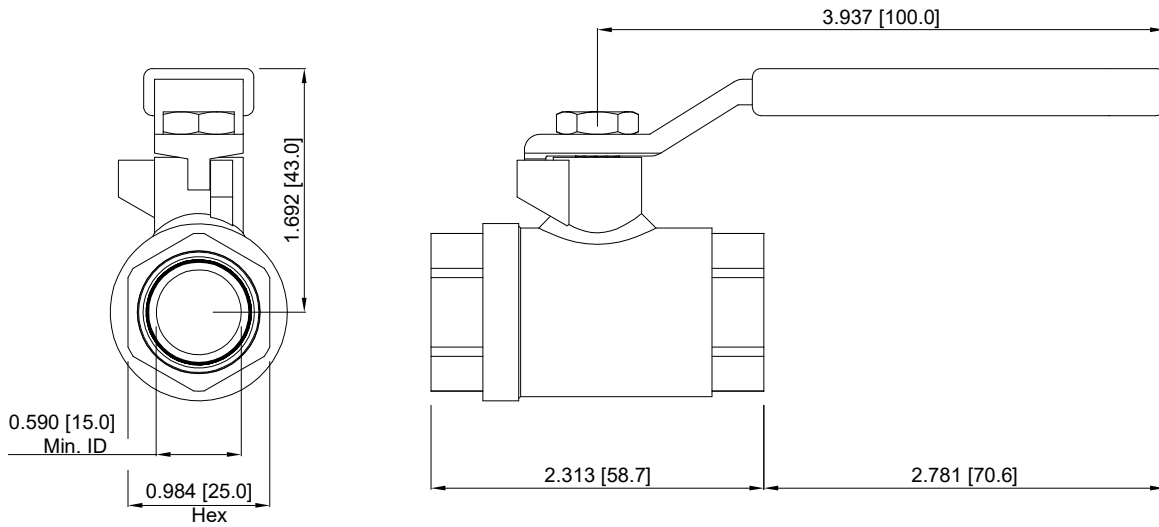
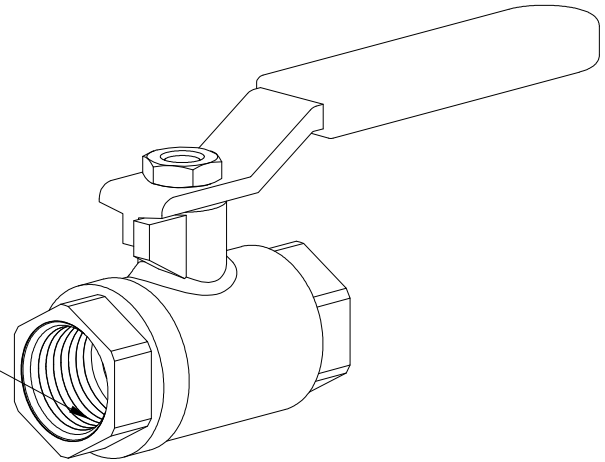




PRESSURE RATED: 150 PSI

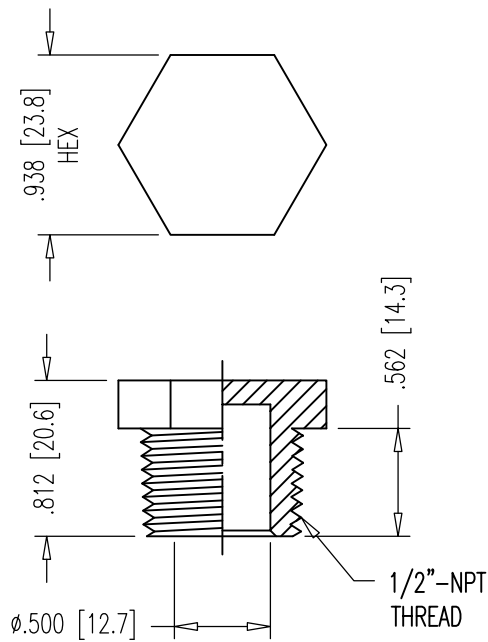
DIMENSIONS: INCH [mm] mm FOR REFERENCE ONLY		QUALITY PLAN NUMBER: Q000000020P		REV.	DATE	NAME	PART NUMBER: 00 00 678
1/2" NPT PIPE NIPPLES				MATERIAL: SCH 40 BLACK WELDED STEEL	SCALE 1:1		DRAWING NUMBER: 00 00 678
				DATE: 01-29-19		DWG: G. MALECKI	
THIS DRAWING, THE PERTINENT ENCLOSURES, DESCRIPTIONS, CALCULATIONS ETC. AND THEIR CONTENTS ARE THE PROPERTY OF DYWIDAG SYSTEMS INTERNATIONAL, USA, INC. THEY ARE NOT ALLOWED TO BE DUPLICATED WITHOUT OUR PERMISSION. THEY ARE ALSO NOT TO BE SHOWN OR EXPLAINED FOR ANY REASON TO A THIRD PARTY OTHER THAN FOR REASONS EXPRESSLY INTENDED BY DSI's SUBMITTAL TO THE ORIGINAL RECEIVER. THEY HAVE TO BE RETURNED UPON REQUEST.				DYWIDAG-SYSTEMS INTERNATIONAL, USA, INC. 320 MARMON DRIVE - BOLINGBROOK, IL 60440 PHONE: 630-739-1100 FAX: 630-739-1405			

1/2" NPT, 14 THREADS PER INCH,
0.53" THREAD ENGAGEMENT



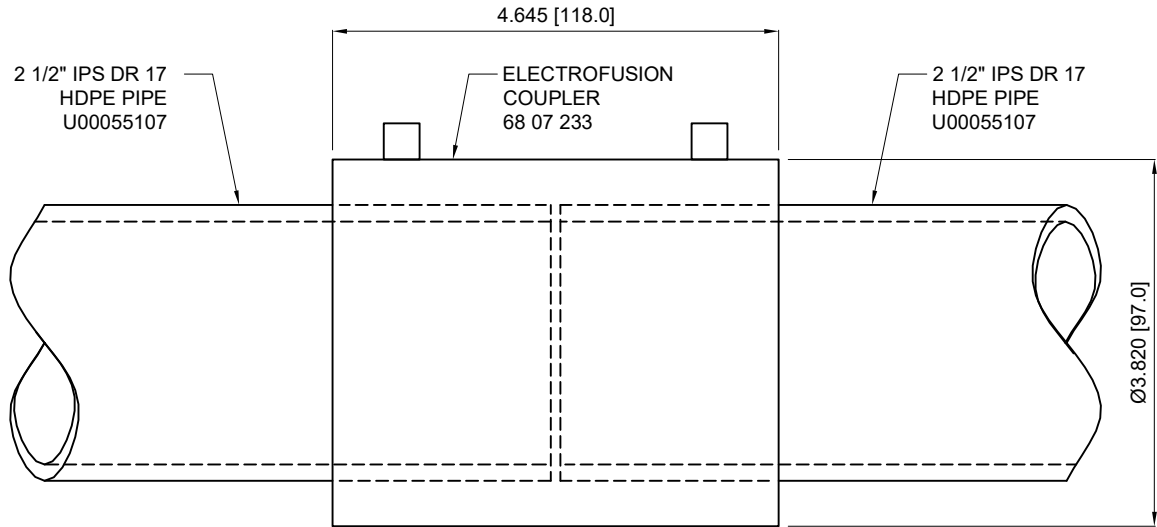
PRESSURE RATED: 150 PSI

DIMENSIONS: INCH [mm] mm FOR REFERENCE ONLY		QUALITY PLAN NUMBER:		WEIGHT -- LBS.	REV.	DATE	NAME	PART NUMBER 00 00 638
1/2" BALL VALVE								
DATE: 02/08/19	DWG: I. TIRA	CHK: SI	APP: SI					
THIS DRAWING, THE PERTINENT ENCLOSURES, DESCRIPTIONS, CALCULATIONS ETC. AND THEIR CONTENTS ARE THE PROPERTY OF DYWIDAG SYSTEMS INTERNATIONAL, USA, INC. THEY ARE NOT ALLOWED TO BE DUPLICATED WITHOUT OUR PERMISSION. THEY ARE ALSO NOT TO BE SHOWN OR EXPLAINED FOR ANY REASON TO A THIRD PARTY OTHER THAN FOR REASONS EXPRESSLY INTENDED BY DSI'S SUBMITTAL TO THE ORIGINAL RECEIVER. THEY HAVE TO BE RETURNED UPON REQUEST.				DYWIDAG-SYSTEMS INTERNATIONAL, USA, INC. POST TENSIONING / REINFORCING UNIT PHONE: 630-739-1100 DYWIDAG 320 MARMON DRIVE - BOLINGBROOK, IL FAX: 630-739-1405				



PRESSURE RATED: 150 PSI

DIMENSIONS: INCH [mm] mm FOR REFERENCE ONLY		QUALITY PLAN NUMBER:		WEIGHT .006 LBS.	REV.	DATE	NAME	ECRN	PART NUMBER: 00 00 649
1/2" NPT NYLON PLUG									
				DATE: 03-12-19	DWG: G. MALECKI	CHK: S.I.	APP: S.I.	MATERIAL: NYLON 6 COLOR: WHITE	
THIS DRAWING, THE PERTINENT ENCLOSURES, DESCRIPTIONS, CALCULATIONS ETC. AND THEIR CONTENTS ARE THE PROPERTY OF DYWIDAG SYSTEMS INTERNATIONAL, USA, INC. THEY ARE NOT ALLOWED TO BE DUPLICATED WITHOUT OUR PERMISSION. THEY ARE ALSO NOT TO BE SHOWN OR EXPLAINED FOR ANY REASON TO A THIRD PARTY OTHER THAN FOR REASONS EXPRESSLY INTENDED BY DSI's SUBMITTAL TO THE ORIGINAL RECEIVER. THEY HAVE TO BE RETURNED UPON REQUEST.				DYWIDAG-SYSTEMS INTERNATIONAL, USA, INC. 320 MARMON DRIVE - BOLINGBROOK, IL 60440 PHONE: 630-739-1100 FAX: 630-739-1405					



INSTALLATION PROCEDURE:

(SEE MANUFACTURER INSTRUCTION MANUAL FOR DETAILED INSTRUCTIONS)

1. CUT PIPE ENDS PRECISELY AT RIGHT ANGLES TO THE PIPE AXIS.
2. CLEAN BOTH PIPE ENDS CAREFULLY.
3. SCRAP BOTH PIPES ENDS AS REQUIRED TO REMOVE THE OXIDE LAYER COMPLETELY
4. CLEAN BOTH PIPE ENDS WITH CONCENTRATED ISOPROPYL ALCOHOL.
5. USE REROUNDING TOOLS TO CORRECT OVAL PIPE IF NEEDED.
6. USE ALIGNMENT CLAMPS TO SECURE THE ALIGNMENT OF CONNECTED PIPES
7. PROVIDE SUPPORT TO THE PIPE AND COUPLER TO PREVENT ANY MOVEMENT.
8. ENSURE THERE IS NO EXISTING GAPS BETWEEN COUPLE AND PIPE FACE.
9. ATTACH LEADS OF THE FUSION PROCESSOR TO THE COUPLER.
10. SCAN THE BARCODE ON THE COUPLER AND CONFIRM THE COUPLER'S SIZE ON THE PROCESSOR SCREEN.
11. INITIATE FUSION PROCESS.
12. UNPLUG THE LEADS AS SOON AS THE FUSION PROCESS ENDS.
13. CHECK COOLING TIME OF THE PROVIDED COUPLER BASED ON COUPLER'S SIZE.
14. DO NOT ALLOW MOVEMENT OR APPLIED PRESSURE ON THE JOINTS BEFORE COOLING TIME ENDS.

DIMENSIONS: INCH [mm] mm FOR REFERENCE ONLY		QUALITY PLAN NUMBER:		WEIGHT	REV.	DATE	DWG.	CHK.	PART NUMBER
ELECTROFUSION COUPLER CONNECTION FOR 2 1/2" IPS DR 17 HDPE PIPE				0.770 LBS					68 07 233
				MATERIAL:	SCALE				
DATE: 02/27/19	DWG: I. TIRA	CHK: SI	APP: SI	COMPOSITE	1 : 2				68 07 233

THIS DRAWING, THE PERTINENT ENCLOSURES, DESCRIPTIONS, CALCULATIONS ETC. AND THEIR CONTENTS ARE THE PROPERTY OF **DYWIDAG SYSTEMS INTERNATIONAL, USA, INC.** THEY ARE NOT ALLOWED TO BE DUPLICATED WITHOUT OUR PERMISSION. THEY ARE ALSO NOT TO BE SHOWN OR EXPLAINED FOR ANY REASON TO A THIRD PARTY OTHER THAN FOR REASONS EXPRESSLY INTENDED BY DSI'S SUBMITTAL TO THE ORIGINAL RECEIVER. THEY HAVE TO BE RETURNED UPON REQUEST.

DYWIDAG-SYSTEMS INTERNATIONAL, USA, INC.

POST TENSIONING / REINFORCING UNIT PHONE: 630-739-1100
320 MARMON DRIVE - BOLINGBROOK, IL FAX: 630-739-1405

