

CUT BAR AFTER STRESSING WITH SAW OR PLASMA CUTTER TO FIT GROUT CAP AND TO HAVE AN EXTENSION OF 1" MIN.

(4) 3/8"-16UNC 316L SS HEX BOLTS, 00 00 783  
3-1/4" LONG WITH WASHERS, 00 00 774

**CAUTION:** WHEN PRESSURIZING GROUT CAPS, DO NOT STAND BEHIND CAPS!

**WARNING:** READ AND COMPLY WITH ALL APPLICABLE SAFETY AND OPERATING INSTRUCTIONS AND WARNINGS FOR **THREADBAR** STRESSING BEFORE STARTING ANY WORK OR OPERATION.

**CAUTION:** WHEN USING HIGH STRENGTH DYWIDAG **THREADBAR** (GRADE 150)

DO NOT WELD TO BAR.  
DO NOT USE BAR AS GROUND CONNECTION FOR WELDING.  
DO NOT ALLOW HOT SLAG OR SPARKS TO TOUCH BAR.  
DO NOT DAMAGE BAR SURFACE.  
DO NOT USE BARS WITH KINKS OR SHARP BENDS.  
FAILURE TO HEED THIS WARNING COULD CAUSE BAR TO BREAK RESULTING IN INJURY OR DAMAGE

MATERIAL LIST		
PART NO.	DESCRIPTION	MATERIAL SPECIFICATION
B26E CUT	1" (26mm) THREADBAR	ASTM A722 TYPE II STEEL
B26E22510 OR B26E22610	5"x5"x1.25" SQ. OR 4"x6.5"x1.5" RECT. BEARING PL. WITH 2-1/4" OD x 3/16" WALL, 5-1/2" LONG MECHANICAL TUBING AND BOLT HOLES, GALV.	STEEL PLATE: ASTM A36, MECHANICAL TUBE: ASTM A512, A513 OR A519, ASSEMBLY GALVANIZED
B36E50700	NYLON BAR GROUT CAP WITH O-RING	CAP: NYLON 6, 20% GLASS FIBER FILLED O-RING: EPDM
00 00 783 00 00 774	(4) 3/8"-16UNC HEX BOLTS, 3-1/4" LONG 3/8" NARROW WASHERS	316L STAINLESS STEEL
B26E24210	1" GROUTABLE ANCHOR NUT	FORGING, NORMALIZED C1045
00 00 649	1/2" NPT PLUG	NYLON 6, WHITE
00 00 678	1/2" NPT NIPPLE, LENGTH AS REQ'D (TEMPORARY)	SCH 40 BLACK WELDED STEEL
00 00 878	3/4" NPT NIPPLE, LENGTH AS REQ'D (TEMPORARY)	SCH 40 BLACK WELDED STEEL
00 00 849	3/4" NPT PLUG	NYLON 6, WHITE
00 00 634	1/2" NPT BALL VALVE (TEMPORARY)	PVC
00 00 834	3/4" NPT BALL VALVE (TEMPORARY)	PVC
U00220200	2-3/8" (59mm) CORRUGATED DUCT	POLYPROPYLENE
U00220205	(OPTIONAL) 2-3/8" (59mm) DUCT COUPLER	POLYPROPYLENE
U00044030	HEAT SHRINK SLEEVE, PMA-90/30-450-BK	ACCORD. TO FDOT SPEC. P.T. SEC. 960-2.2.1.8
ANS	TEFLON TAPE OR PASTE	-

- NOTES:**
- USERS SHALL REFER TO FDOT STANDARD SPECIFICATIONS AND PROJECT SPECIFIC CRITERIA FOR TENDON INSTALLATION, STRESSING, & GROUTING.
  - REQUIRED REINFORCING BARS ARE NOT SHOWN ON THIS DRAWING.
  - MAXIMUM ANGULAR MISALIGNMENT WHEN USING ANCHOR NUT: ±2°.
  - CENTER TO CENTER, END AND EDGE DISTANCE DEPENDS ON THE LOCATION OF THE BAR AND CONCRETE STRENGTH. (SEE TABLE).
  - C/C DISTANCE = 2 X END DISTANCE - 2 X CONCRETE COVER (2" ASSUMED). TIGHTER C/C DISTANCE SHOULD BE EVALUATED.
  - DUCT IS DELIVERED IN STRAIGHT SECTIONS AND IS NOT INTENDED TO BE COILED.
  - BURSTING REINFORCEMENT IS NOT SHOWN AND WILL BE INCLUDED WITH THE SHOP DRAWINGS.
  - THREADBAR TENDONS ARE STRESSED FROM ONE END ONLY.

Plate Type	Concrete strength fci, ksi	Depth, D (in)	Minimum distances, in	
			End dist, E	c/c dist, C
Square	5.5	9.0	4.50	5.00
	5.0	10.0	5.00	6.00
	4.5	11.0	5.50	7.00
Rectangular	4.0	13.0	6.50	9.00
	5.0	8.0	6.50	9.00
	4.5	9.0	7.31	10.63
	4.0	10.0	8.13	12.25

Plate Type	Part No	Width, in	Length, in	Thickness t, in
Square	B26E22510	5	5	1.25
Rectangular	B26E22610	4	6.5	1.5

DIMENSIONS: INCH

**INTERNAL GROUTED SYSTEM FOR 1" (26mm) THREADBAR ASSEMBLY**

DATE: 08-01-19 DWG: G. MALECKI CHK: S.I. APP: S.I.

THIS DRAWING, THE PERTINENT ENCLOSURES, DESCRIPTIONS, CALCULATIONS ETC. AND THEIR CONTENTS ARE THE PROPERTY OF DYWIDAG SYSTEMS INTERNATIONAL, USA, INC. THEY ARE NOT ALLOWED TO BE DUPLICATED WITHOUT OUR PERMISSION. THEY ARE ALSO NOT TO BE SHOWN OR EXPLAINED FOR ANY REASON TO A THIRD PARTY OTHER THAN FOR REASONS EXPRESSLY INTENDED BY DSI'S SUBMITTAL TO THE ORIGINAL RECEIVER. THEY HAVE TO BE RETURNED UPON REQUEST.

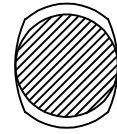
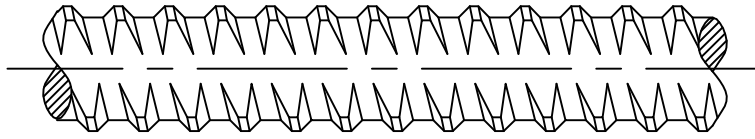
REV.	DATE	NAME

SCALE: 1:3

PT26E200

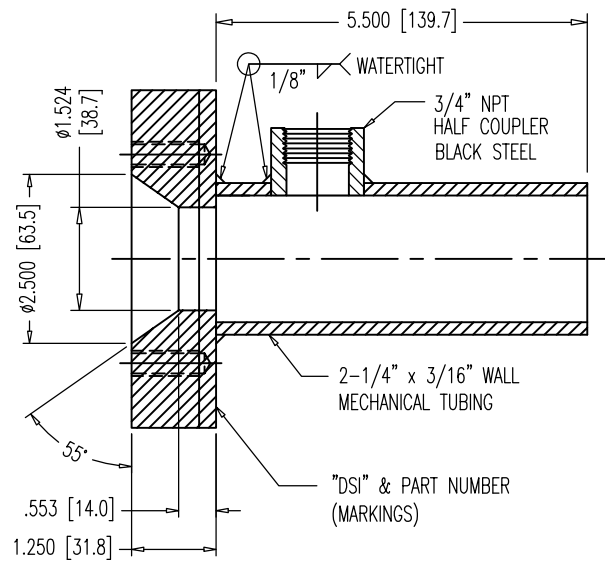
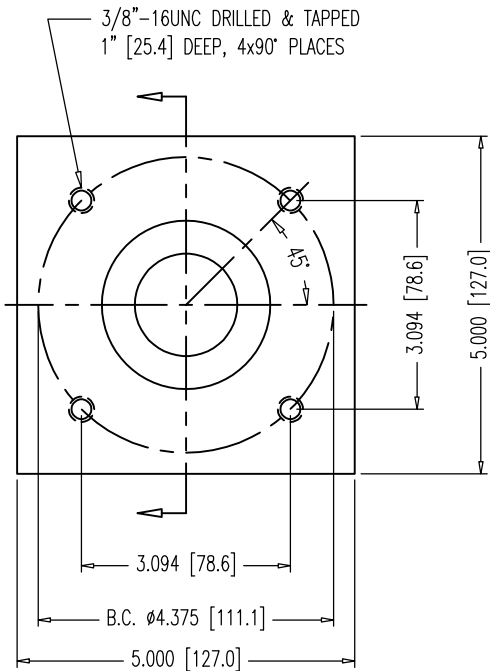
DYWIDAG-SYSTEMS INTERNATIONAL, USA, INC.  
POST TENSIONING / REINFORCING UNIT PHONE: 630-739-1100  
320 MARMON DRIVE - BOLINGBROOK, IL FAX: 630-739-1405

RIGHT HAND THREAD



	<u>PART NUMBERS</u>	<u>SPECIFICATIONS</u>
FOR BARE BAR:	B26E CUT	ASTM A722 TYPE II
<u>PHYSICAL PROPERTIES</u>		
EFFECTIVE AREA:	0.85 SQ.IN.	
ULTIMATE STRENGTH:	150 KSI	
ULTIMATE LOAD:	127.5 KIPS	
YIELD LOAD:	102.8 KIPS	
WEIGHT:	3.01 LBS./FT.	
MAX. BAR $\phi$ INCL. RIBS:	1.20 IN.	
AVERAGE CORE $\phi$ :	1.02 IN.	
PITCH:	0.510 IN.	

DIMENSIONS: INCH [mm] mm FOR REFERENCE ONLY		QUALITY PLAN NUMBER:		REV.		DATE		NAME		ECRN		PART NUMBER: B26E CUT	
<b>1"Ø THREADBAR GRADE 150 KSI</b>				MATERIAL: SEE ABOVE		SCALE NTS							
DATE: 12-22-91	DWG: G. MALECKI	CHK:	APP: K.L.									DRAWING NUMBER: B26E CUT	
THIS DRAWING, THE PERTINENT ENCLOSURES, DESCRIPTIONS, CALCULATIONS ETC. AND THEIR CONTENTS ARE THE PROPERTY OF DYWIDAG SYSTEMS INTERNATIONAL, USA, INC. THEY ARE NOT ALLOWED TO BE DUPLICATED WITHOUT OUR PERMISSION. THEY ARE ALSO NOT TO BE SHOWN OR EXPLAINED FOR ANY REASON TO A THIRD PARTY OTHER THAN FOR REASONS EXPRESSLY INTENDED BY DSI'S SUBMITTAL TO THE ORIGINAL RECEIVER. THEY HAVE TO BE RETURNED UPON REQUEST.				DYWIDAG-SYSTEMS INTERNATIONAL, USA, INC. 320 MARMON DRIVE - BOLINGBROOK, IL 60440 PHONE: 630-739-1100				FAX: 630-739-1405				<b>DYWIDAG</b>	



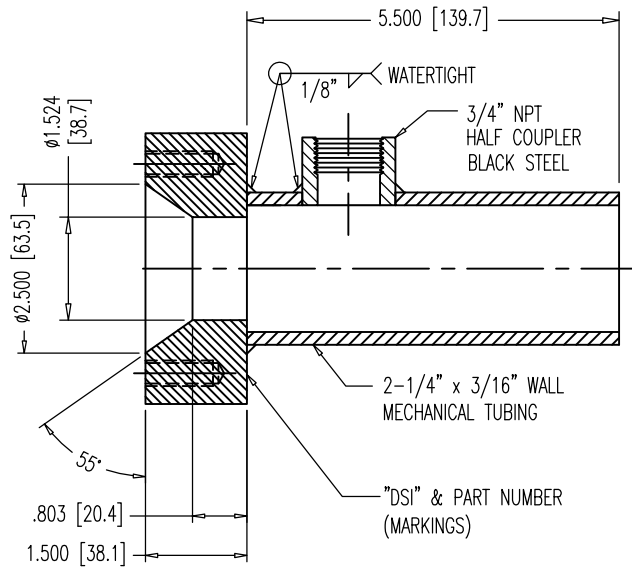
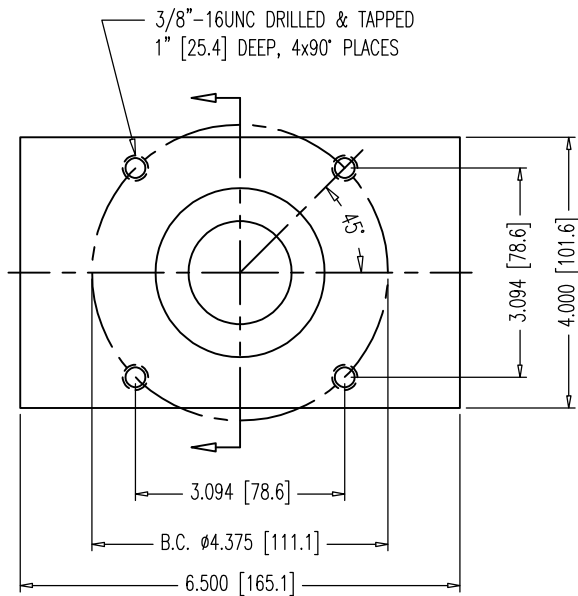
NOTES:

1. PLATE AND PIPE GALVANIZED ACCORDING TO ASTM A123 AFTER WELDING.
2. DIMENSIONS AND TOLERANCES APPLY TO UNCOATED PLATE AND TUBING.
3. ENSURE THREADABILITY OF TAPPED HOLES IN PLATES IF THEY ARE REQUIRED.
4. 59mm DUCT U00220200 FITS OVER TUBING.

PLATE MATERIAL: ASTM A36  
 MECHANICAL TUBE MATERIAL  
 SHALL BE A512, A513 OR A519

DIMENSIONS: INCH [mm] mm FOR REFERENCE ONLY		QUALITY PLAN NUMBER: QBE0021200L		TOLERANCES: ±.020 UNLESS NOTED	WEIGHT: 9.8 LBS.	REV.	DATE	NAME	ECRN	PART NUMBER: <b>B26E22510</b>
<b>SQUARE BEARING PLATE WITH EXIT PIPE FOR 1" THREADBAR</b>				MATERIAL: SEE ABOVE	SCALE 1:3					DRAWING NUMBER: <b>B26E22510</b>
DATE: 08-15-07	DWG: G. MALECKI	CHK: S.N.	APP: E.A.							
THIS DRAWING, THE PERTINENT ENCLOSURES, DESCRIPTIONS, CALCULATIONS ETC. AND THEIR CONTENTS ARE THE PROPERTY OF <b>DYWIDAG SYSTEMS INTERNATIONAL, USA, INC.</b> THEY ARE NOT ALLOWED TO BE DUPLICATED WITHOUT OUR PERMISSION. THEY ARE ALSO NOT TO BE SHOWN OR EXPLAINED FOR ANY REASON TO A THIRD PARTY OTHER THAN FOR REASONS EXPRESSLY INTENDED BY DSI'S SUBMITTAL TO THE ORIGINAL RECEIVER. THEY HAVE TO BE RETURNED UPON REQUEST.										
<b>DYWIDAG-SYSTEMS INTERNATIONAL, USA, INC.</b> 320 MARMON DRIVE - BOLINGBROOK, IL 60440 PHONE: 630-739-1100 FAX: 630-739-1405										




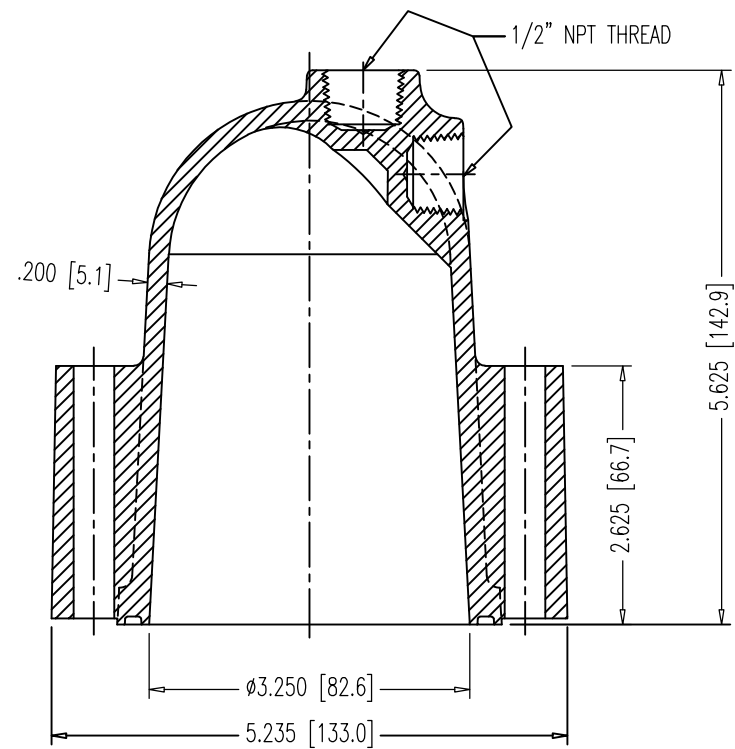


NOTES:

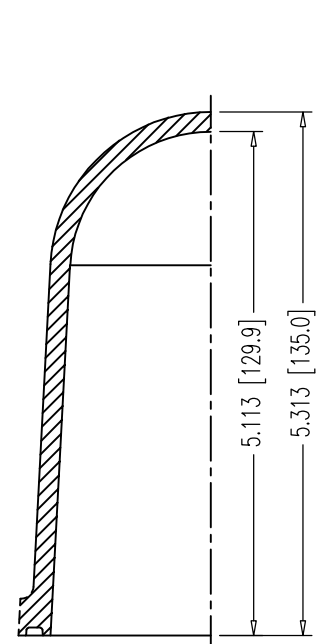
1. PLATE AND PIPE GALVANIZED ACCORDING TO ASTM A123 AFTER WELDING.
2. DIMENSIONS AND TOLERANCES APPLY TO UNCOATED PLATE AND TUBING.
3. ENSURE THREADABILITY OF TAPPED HOLES IN PLATES IF THEY ARE REQUIRED.
4. 59mm DUCT U00220200 FITS OVER TUBING.

PLATE MATERIAL: ASTM A36  
MECHANICAL TUBE MATERIAL  
SHALL BE A512, A513 OR A519

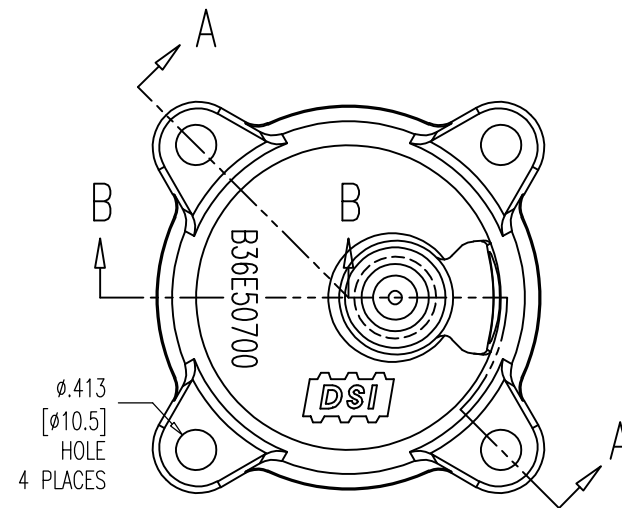
DIMENSIONS: INCH [mm] mm FOR REFERENCE ONLY		QUALITY PLAN NUMBER: QBE0021200L		TOLERANCES: $\pm$ .020 UNLESS NOTED	WEIGHT: 10.0 LBS.	REV.	DATE	NAME	PART NUMBER: <b>B26E22610</b>	
<b>RECT. BEARING PLATE WITH EXIT PIPE FOR 1" THREADBAR</b>				MATERIAL: SEE ABOVE	SCALE: 1:3				DRAWING NUMBER: <b>B26E22610</b>	
				DATE: 08-15-07	DWG: G. MALECKI	CHK: S.N.	APP: E.A.			
THIS DRAWING, THE PERTINENT ENCLOSURES, DESCRIPTIONS, CALCULATIONS ETC. AND THEIR CONTENTS ARE THE PROPERTY OF DYWIDAG SYSTEMS INTERNATIONAL, USA, INC. THEY ARE NOT ALLOWED TO BE DUPLICATED WITHOUT OUR PERMISSION. THEY ARE ALSO NOT TO BE SHOWN OR EXPLAINED FOR ANY REASON TO A THIRD PARTY OTHER THAN FOR REASONS EXPRESSLY INTENDED BY DSI'S SUBMITTAL TO THE ORIGINAL RECEIVER. THEY HAVE TO BE RETURNED UPON REQUEST.				DYWIDAG-SYSTEMS INTERNATIONAL, USA, INC. 320 MARMON DRIVE - BOLINGBROOK, IL 60440 PHONE: 630-739-1100 FAX: 630-739-1405				<b>DYWIDAG</b> 		



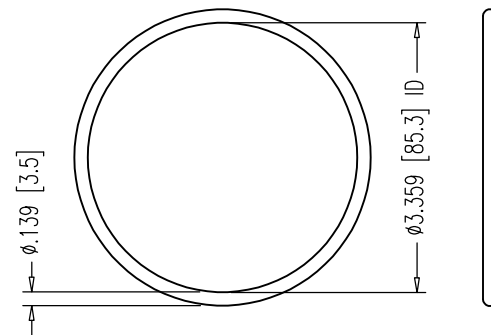
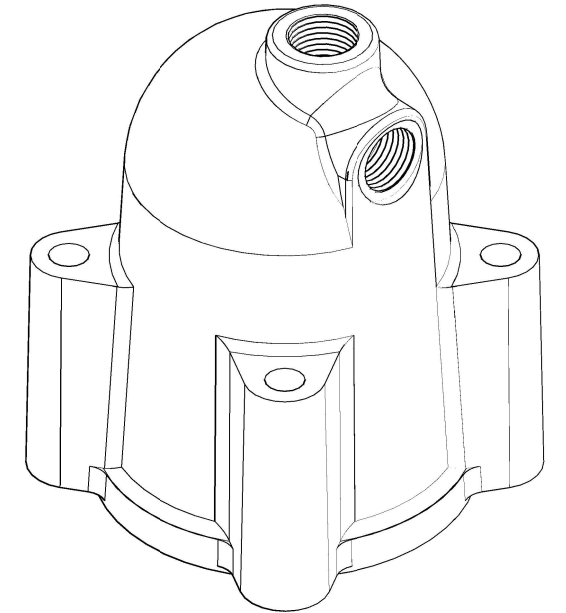
SECTION A-A



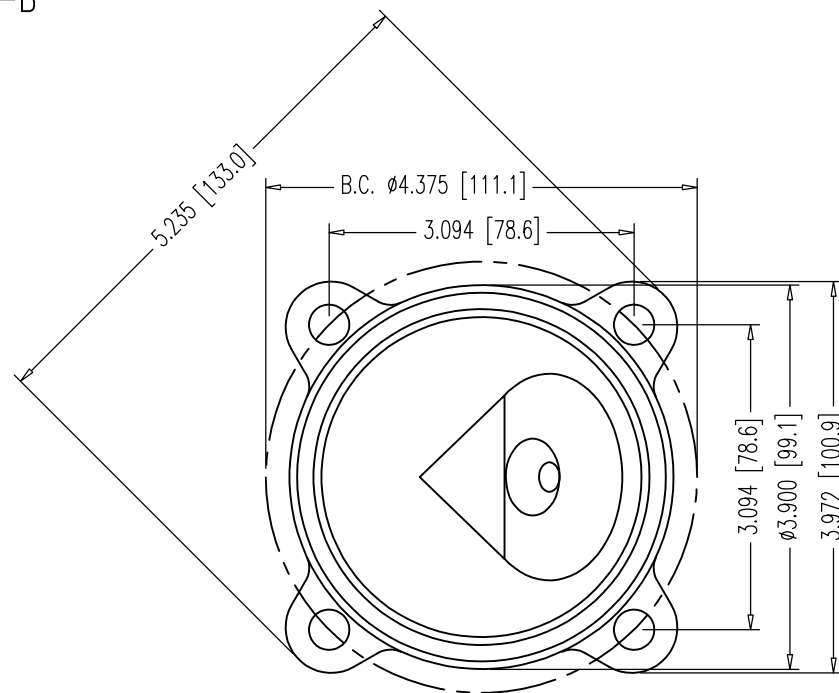
SECTION B-B



TOP VIEW



O-RING MATERIAL:  
 EPDM MEETING FDOT  
 SPECIFICATIONS 960-2.2.1.7.  
 #237 O-RING  
 3-3/8" x 3-5/8" x 1/8"  
 SCALE: NTS



BOTTOM VIEW

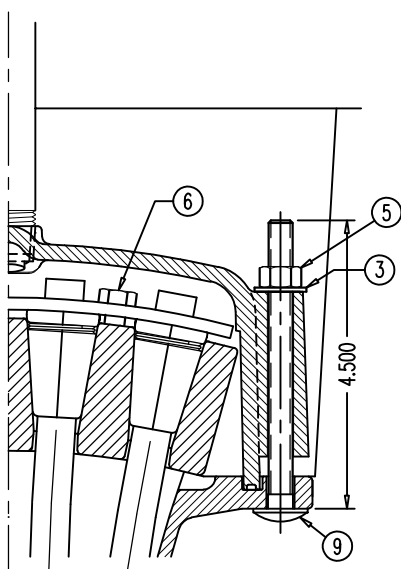
NOTES:

1. USE 3/8"-16UNC 316L S.S. HEX BOLTS, 3-1/4" LONG 00 00 783 W/SMALL DIA. WASHER 00 00 774.
2. INSTALL O-RING IN GROOVE USING DROPS OF LIQUID ADHESIVE BEFORE SHIPPING.
3. THE NYLON CONFORMS TO ASTM D5989, WITH CELL CLASSIFICATION S-PA0401 (ULTIMATE STRENGTH 10,000 PSI MIN., WITH UV STABILIZER ADDED).
4. DRILL 1/2" [12.7] HOLE IN PORT BEING USED-CAUTION-RECOMMEND USING HOLE SAW BIT OR SPADE BIT (BY OTHERS), BE CAREFULL TO PREVENT DAMAGE TO THREADS OR CAP.
5. WHEN PRESSURIZING GROUT CAPS, DO NOT STAND BEHIND CAPS!

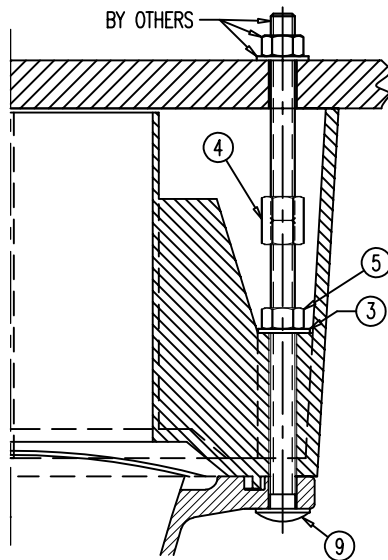
DIMENSIONS: INCH [mm] mm FOR REFERENCE ONLY		QUALITY PLAN NUMBER: QS60072300P		TOLERANCES: SEE TOLERANCE NOTE	WEIGHT 0.817 LBS.	REV. 1	DATE 10/04/18	NAME S.I.	PART NUMBER: <b>B36E50700</b>
<b>BAR GROUT CAP WITH O-RING FOR ALL 1" &amp; 1-1/4" NUTS AND 1-3/8" ANCHOR NUT</b>				MATERIAL: NYLON 6 20% GLASS FIBER FILLED COLOR: BLACK	SCALE 1:2 UNLESS NOTED				DRAWING NUMBER: <b>B36E50700</b>
DATE: 10-02-06	DWG: G. MALECKI	CHK: E.A.	APP: K.S.	THIS DRAWING, THE PERTINENT ENCLOSURES, DESCRIPTIONS, CALCULATIONS ETC. AND THEIR CONTENTS ARE THE PROPERTY OF <b>DYWIDAG SYSTEMS INTERNATIONAL,            USA, INC.</b> THEY ARE NOT ALLOWED TO BE DUPLICATED WITHOUT OUR PERMISSION. THEY ARE ALSO NOT TO BE SHOWN OR EXPLAINED FOR ANY REASON TO A THIRD PARTY OTHER THAN FOR REASONS EXPRESSLY INTENDED BY <b>DSI's</b> SUBMITTAL TO THE ORIGINAL RECEIVER. THEY HAVE TO BE RETURNED UPON REQUEST.					
<b>DYWIDAG-SYSTEMS INTERNATIONAL, USA, INC.</b> 320 MARMON DRIVE - BOLINGBROOK, IL 60440 PHONE: 630-739-1100 FAX: 630-739-1405									



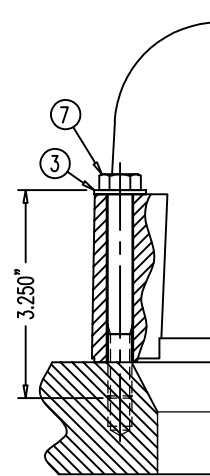




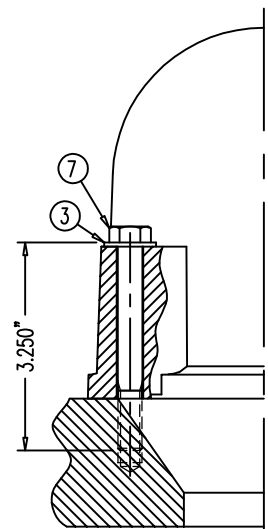
KEEPER PLATE 68 04 2637 ON  
WEDGE PLATE 68 04 2534A &  
NYLON CAP 68 04 2539 ON  
FLAT ANCHOR 68 04 2548



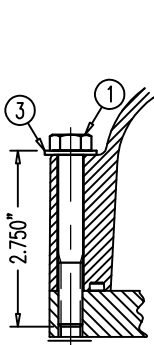
POCKET FORMER 68 04 2640  
ON FLAT ANCHOR 68 04 2548



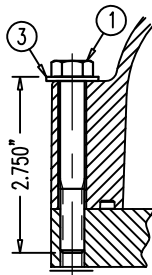
NYLON BAR CAP B36E50700 OR 50700A  
ON GALV. BEARING PLATE  
B26E22510, 22610, 22700, 22800,  
B32E22510, 22610, 22700, 22800,  
B36E22410, 22420, 22910, 22510,  
22610, 22700, 22800 & NYLON  
BAR CAP B66E50700 OR 50700A  
ON GALV. BEARING PLATE B66E22700



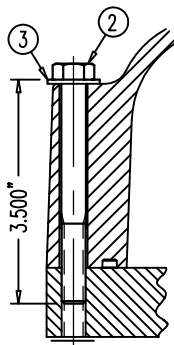
NYLON BAR CAP  
B46M50700  
OR 50700A  
ON GALV.  
BEARING PLATE  
B46E22700 &  
B46E22800



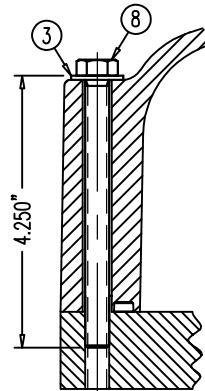
NYLON CAP  
68 07 7230 OR 7230A  
ON MPA 68 07 248



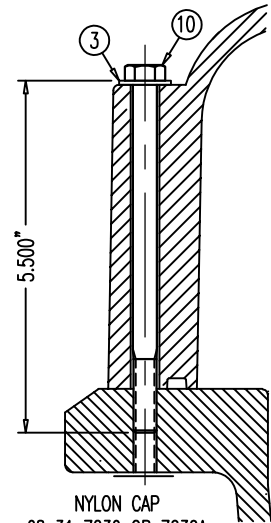
NYLON CAP  
68 12 7230 OR 7230A  
ON MPA 68 12 248



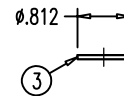
NYLON CAP  
68 19 7230 OR 7230A  
ON MPA 68 19 248



NYLON CAP  
68 27 7230 OR 7230A  
ON MPA 68 27 248



NYLON CAP  
68 31 7230 OR 7230A  
ON MPA 68 31 248



TYPE A NARROW WASHER  
FOR 3/8"-UNC BOLT

NOTE:  
THE 316L S.S. BOLTS ARE SPECIAL ORDER.  
ALL WASHERS, HEX NUTS & COUPLERS HAVE  
NO MARKINGS.

POS.	PART NUMBER	DISCRIPTION (ALL PARTS 316L STAINLESS STEEL UNLESS NOTED)
①	00 00 771	3/8"-16UNC HEX BOLT, 2-3/4" LONG (1" LONG THREAD)
②	00 00 772	3/8"-16UNC HEX BOLT, 3-1/2" LONG (1" LONG THREAD)
③	00 00 774	TYPE A NARROW WASHER FOR 3/8"-UNC BOLT
④	00 00 776	3/8"-16UNC COUPLER, ZINC COATED
⑤	00 00 777	3/8"-16UNC HEX NUT
⑥	00 00 778	5/16"-18UNC HEX BOLT, 7/8" LONG, ZINC PLATED
⑦	00 00 783	3/8"-16UNC HEX BOLT, 3-1/4" LONG (1" LONG THREAD)
⑧	00 00 784	3/8"-16UNC HEX BOLT, 4-1/4" LONG (FULL THREAD)
⑨	00 00 789	3/8"-16UNC CARRIAGE BOLT, 4-1/2" LONG
⑩	00 00 790	3/8"-16UNC CARRIAGE BOLT, 5-1/2" LONG

DIMENSIONS: INCH

QUALITY PLAN NUMBER:

## STAINLESS STEEL 316L BOLTS AND WASHER FOR NYLON CAPS

DATE: 09-10-04 DWG: G. MALECKI CHK: E.A. APP: K.S.

THIS DRAWING, THE PERTINENT ENCLOSURES, DESCRIPTIONS, CALCULATIONS ETC. AND THEIR CONTENTS ARE THE PROPERTY OF DYWIDAG SYSTEMS INTERNATIONAL, USA, INC. THEY ARE NOT ALLOWED TO BE DUPLICATED WITHOUT OUR PERMISSION. THEY ARE ALSO NOT TO BE SHOWN OR EXPLAINED FOR ANY REASON TO A THIRD PARTY OTHER THAN FOR REASONS EXPRESSLY INTENDED BY DSI'S SUBMITTAL TO THE ORIGINAL RECEIVER. THEY HAVE TO BE RETURNED UPON REQUEST.

SCALE  
1:3

REV.	DATE	NAME	NAME
1	05/01/19	S.I.	
2	05/28/20	S.I.	

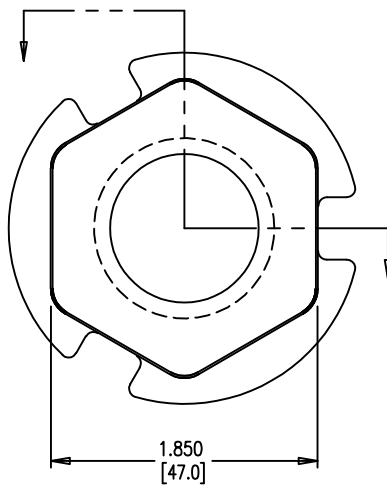
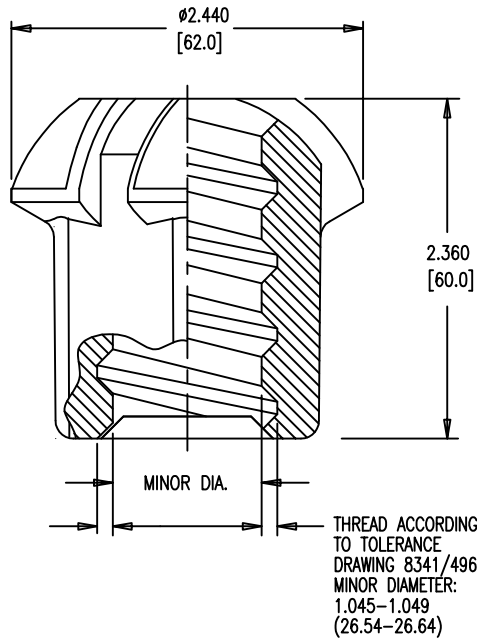
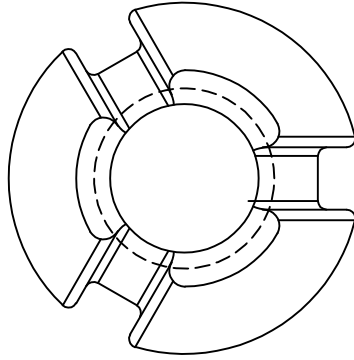
PART NUMBERS:  
SEE TABLE

DRAWING NUMBER:  
00 00 770

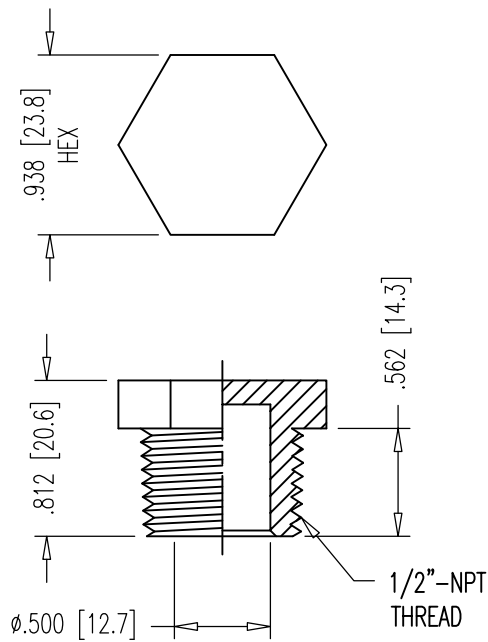
DYWIDAG-SYSTEMS INTERNATIONAL, USA, INC.

POST TENSIONING / REINFORCING UNIT PHONE: 630-739-1100  
320 MARMON DRIVE - BOLINGBROOK, IL FAX: 630-739-1405


**DYWIDAG**



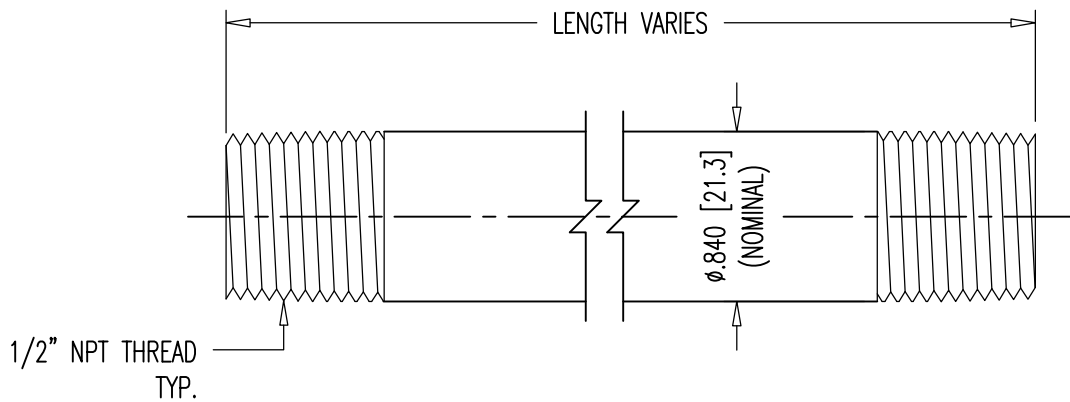
DIMENSIONS: INCH/mm mm FOR REFERENCE ONLY		QUALITY PLAN NUMBER: QBE0020100F		WEIGHT 1.5 LBS.	REV.	DATE	NAME	PART NUMBER: <b>B26E24210</b>
<b>GROUTABLE ANCHOR NUTS FOR 1" Ø BAR, 150 KSI</b>				MATERIAL: C1045 FORGING ASTM A521-CF MOD. NORMALIZED BHN = 180-220	SCALE 1:1			DRAWING NUMBER: <b>B26E24200</b>
DATE: 06-07-05	DWG: G. MALECKI	CHK: H.K.	APP: K.S.					
THIS DRAWING, THE PERTINENT ENCLOSURES, DESCRIPTIONS, CALCULATIONS ETC. AND THEIR CONTENTS ARE THE PROPERTY OF <b>DYWIDAG SYSTEMS INTERNATIONAL,          USA, INC.</b> THEY ARE NOT ALLOWED TO BE DUPLICATED WITHOUT OUR PERMISSION. THEY ARE ALSO NOT TO BE SHOWN OR EXPLAINED FOR ANY REASON TO A THIRD PARTY OTHER THAN FOR REASONS EXPRESSLY INTENDED BY <b>DSI's</b> SUBMITTAL TO THE ORIGINAL RECEIVER. THEY HAVE TO BE RETURNED UPON REQUEST.				<b>DYWIDAG-SYSTEMS INTERNATIONAL, USA, INC.</b> 320 MARMON DRIVE - BOLINGBROOK, IL 60440 PHONE: 630-739-1100 FAX: 630-739-1405				




PRESSURE RATED: 150 PSI

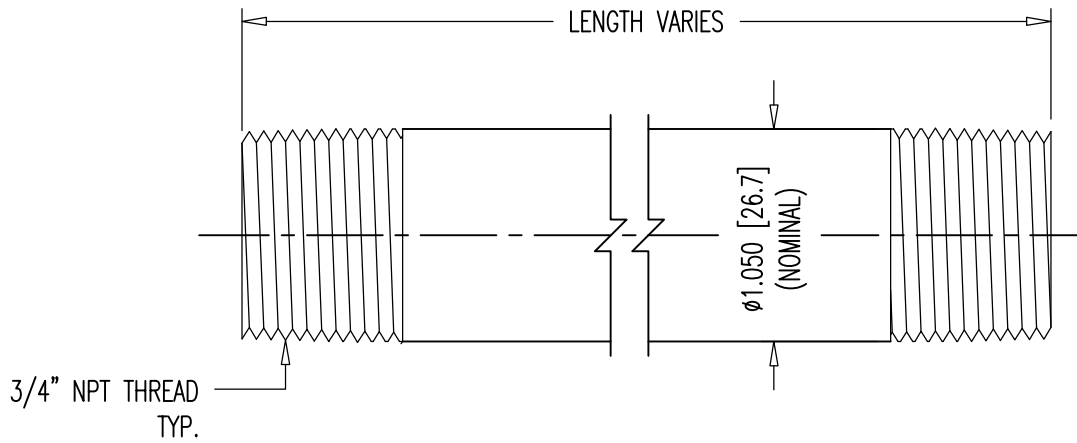
DIMENSIONS: INCH [mm] mm FOR REFERENCE ONLY		QUALITY PLAN NUMBER:		WEIGHT .006 LBS.	REV.	DATE	NAME	ECRN	PART NUMBER: <b>00 00 649</b>
<b>1/2" NPT NYLON PLUG</b>					MATERIAL: NYLON 6				
				DATE: 03-12-19	DWG: G. MALECKI	CHK: S.I.	APP: S.I.	SCALE 1:1	
THIS DRAWING, THE PERTINENT ENCLOSURES, DESCRIPTIONS, CALCULATIONS ETC. AND THEIR CONTENTS ARE THE PROPERTY OF <b>DYWIDAG SYSTEMS INTERNATIONAL, USA, INC.</b> THEY ARE NOT ALLOWED TO BE DUPLICATED WITHOUT OUR PERMISSION. THEY ARE ALSO NOT TO BE SHOWN OR EXPLAINED FOR ANY REASON TO A THIRD PARTY OTHER THAN FOR REASONS EXPRESSLY INTENDED BY <b>DSI's</b> SUBMITTAL TO THE ORIGINAL RECEIVER. THEY HAVE TO BE RETURNED UPON REQUEST.				<b>DYWIDAG-SYSTEMS INTERNATIONAL, USA, INC.</b> 320 MARMON DRIVE - BOLINGBROOK, IL 60440 PHONE: 630-739-1100      FAX: 630-739-1405			<b>DYWIDAG</b> 		






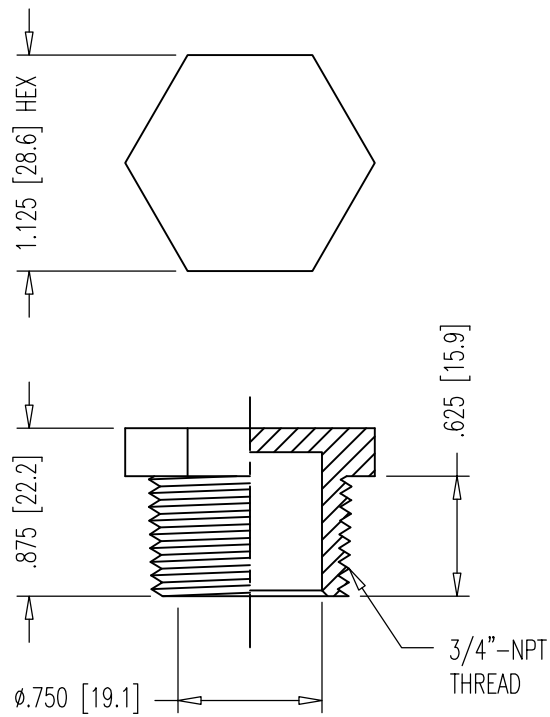
PRESSURE RATED: 150 PSI

DIMENSIONS: INCH [mm] mm FOR REFERENCE ONLY		QUALITY PLAN NUMBER: Q000000020P		REV.	DATE	NAME	PART NUMBER: <b>00 00 678</b>
<b>1/2" NPT PIPE NIPPLES</b>				MATERIAL: SCH 40 BLACK WELDED STEEL	SCALE 1:1		DRAWING NUMBER: <b>00 00 678</b>
						DATE: 01-29-19	
THIS DRAWING, THE PERTINENT ENCLOSURES, DESCRIPTIONS, CALCULATIONS ETC. AND THEIR CONTENTS ARE THE PROPERTY OF <b>DYWIDAG SYSTEMS INTERNATIONAL, USA, INC.</b> THEY ARE NOT ALLOWED TO BE DUPLICATED WITHOUT OUR PERMISSION. THEY ARE ALSO NOT TO BE SHOWN OR EXPLAINED FOR ANY REASON TO A THIRD PARTY OTHER THAN FOR REASONS EXPRESSLY INTENDED BY <b>DSI's</b> SUBMITTAL TO THE ORIGINAL RECEIVER. THEY HAVE TO BE RETURNED UPON REQUEST.				<b>DYWIDAG-SYSTEMS INTERNATIONAL, USA, INC.</b> 320 MARMON DRIVE - BOLINGBROOK, IL 60440 PHONE: 630-739-1100      FAX: 630-739-1405			




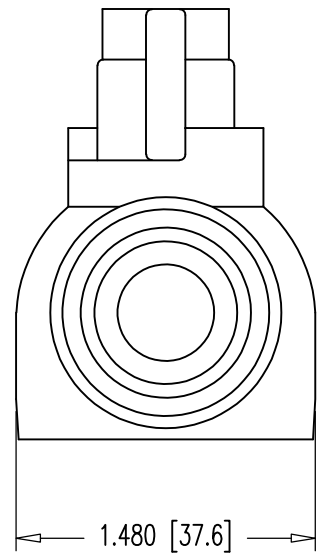
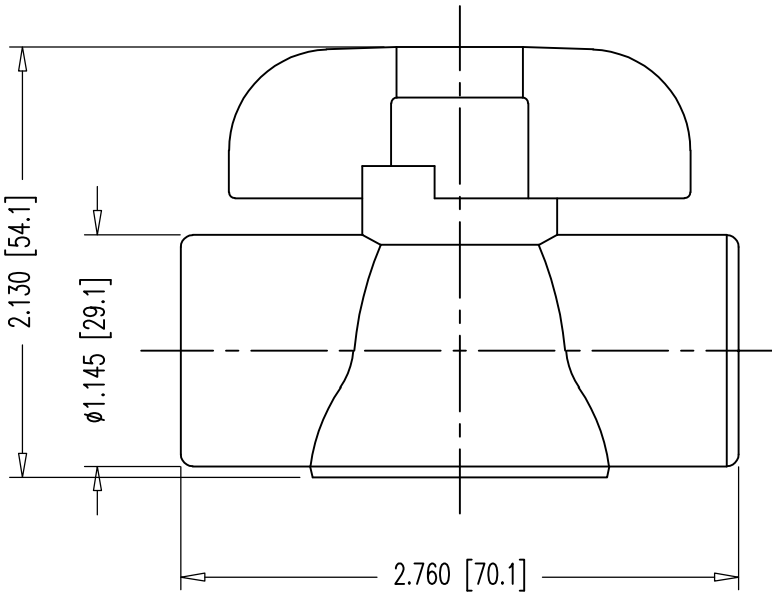
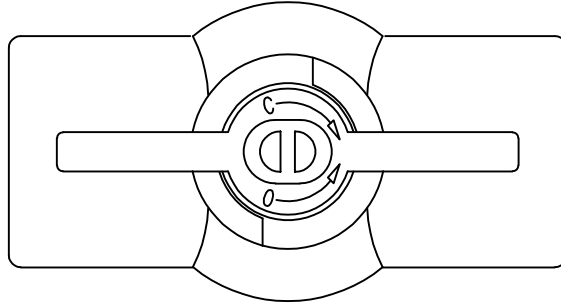
PRESSURE RATED: 150 PSI

DIMENSIONS: INCH [mm] mm FOR REFERENCE ONLY		QUALITY PLAN NUMBER: Q00000020P		REV.	DATE	NAME	ECRN	PART NUMBER: <b>00 00 878</b>	
<b>3/4" NPT PIPE NIPPLES</b>				MATERIAL:	SCALE				
				SCH 40 BLACK WELDED STEEL		1:1			DRAWING NUMBER: <b>00 00 878</b>
DATE: 01-29-19	DWG: G. MALECKI	CHK: S.I.	APP: S.I.						
THIS DRAWING, THE PERTINENT ENCLOSURES, DESCRIPTIONS, CALCULATIONS ETC. AND THEIR CONTENTS ARE THE PROPERTY OF <b>DYWIDAG SYSTEMS INTERNATIONAL,          USA, INC.</b> THEY ARE NOT ALLOWED TO BE DUPLICATED WITHOUT OUR PERMISSION. THEY ARE ALSO NOT TO BE SHOWN OR EXPLAINED FOR ANY REASON TO A THIRD PARTY OTHER THAN FOR REASONS EXPRESSLY INTENDED BY <b>DSI's</b> SUBMITTAL TO THE ORIGINAL RECEIVER. THEY HAVE TO BE RETURNED UPON REQUEST.				<b>DYWIDAG-SYSTEMS INTERNATIONAL, USA, INC.</b> 320 MARMON DRIVE - BOLINGBROOK, IL 60440 PHONE: 630-739-1100 FAX: 630-739-1405				<b>DYWIDAG</b> 	



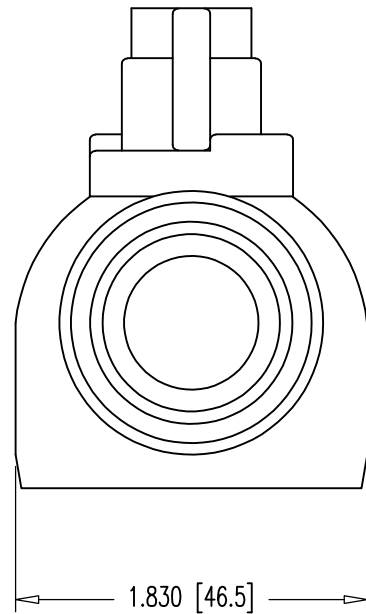
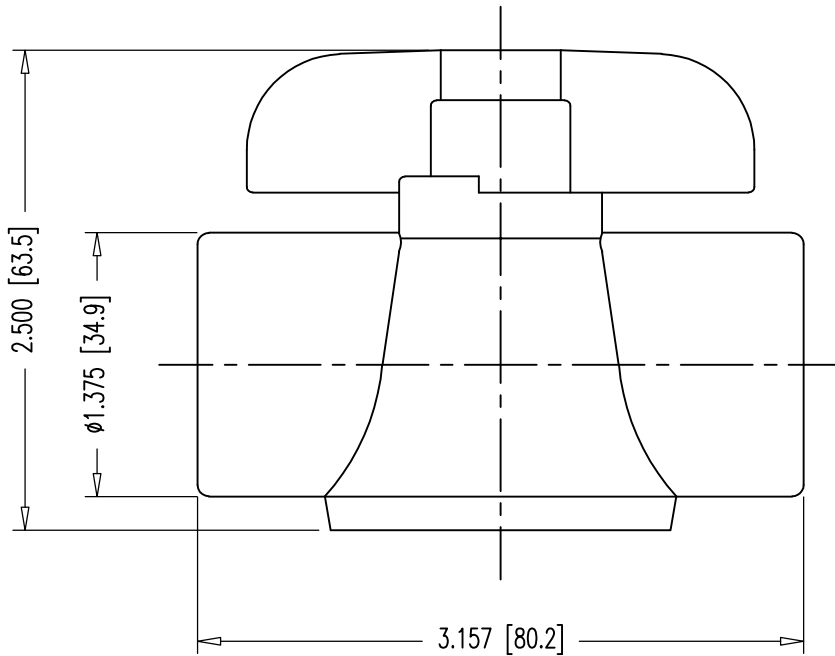
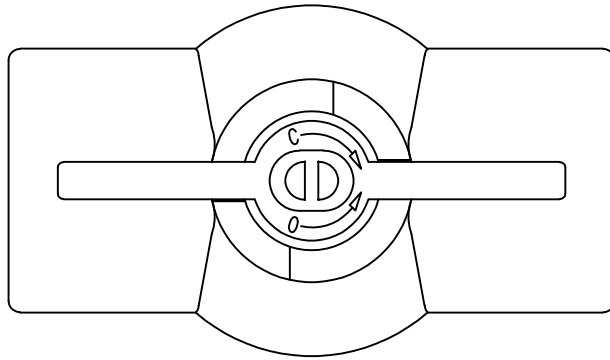
PRESSURE RATED: 150 PSI

DIMENSIONS: INCH [mm] mm FOR REFERENCE ONLY		QUALITY PLAN NUMBER:		WEIGHT .009 LBS.	REV.	DATE	NAME	PART NUMBER: <b>00 00 849</b>	
<b>3/4" NPT NYLON PLUG</b>									MATERIAL: NYLON 6
				DATE: 03-12-19		DWG: G. MALECKI	CHK: S.I.	APP: S.I..	COLOR: WHITE
THIS DRAWING, THE PERTINENT ENCLOSURES, DESCRIPTIONS, CALCULATIONS ETC. AND THEIR CONTENTS ARE THE PROPERTY OF <b>DYWIDAG SYSTEMS INTERNATIONAL, USA, INC.</b> THEY ARE NOT ALLOWED TO BE DUPLICATED WITHOUT OUR PERMISSION. THEY ARE ALSO NOT TO BE SHOWN OR EXPLAINED FOR ANY REASON TO A THIRD PARTY OTHER THAN FOR REASONS EXPRESSLY INTENDED BY <b>DSI's</b> SUBMITTAL TO THE ORIGINAL RECEIVER. THEY HAVE TO BE RETURNED UPON REQUEST.				<b>DYWIDAG-SYSTEMS INTERNATIONAL, USA, INC.</b> 320 MARMON DRIVE - BOLINGBROOK, IL 60440 PHONE: 630-739-1100 FAX: 630-739-1405				<b>DYWIDAG</b> 	



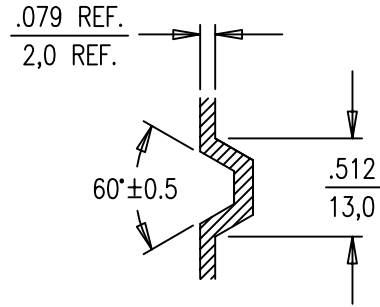
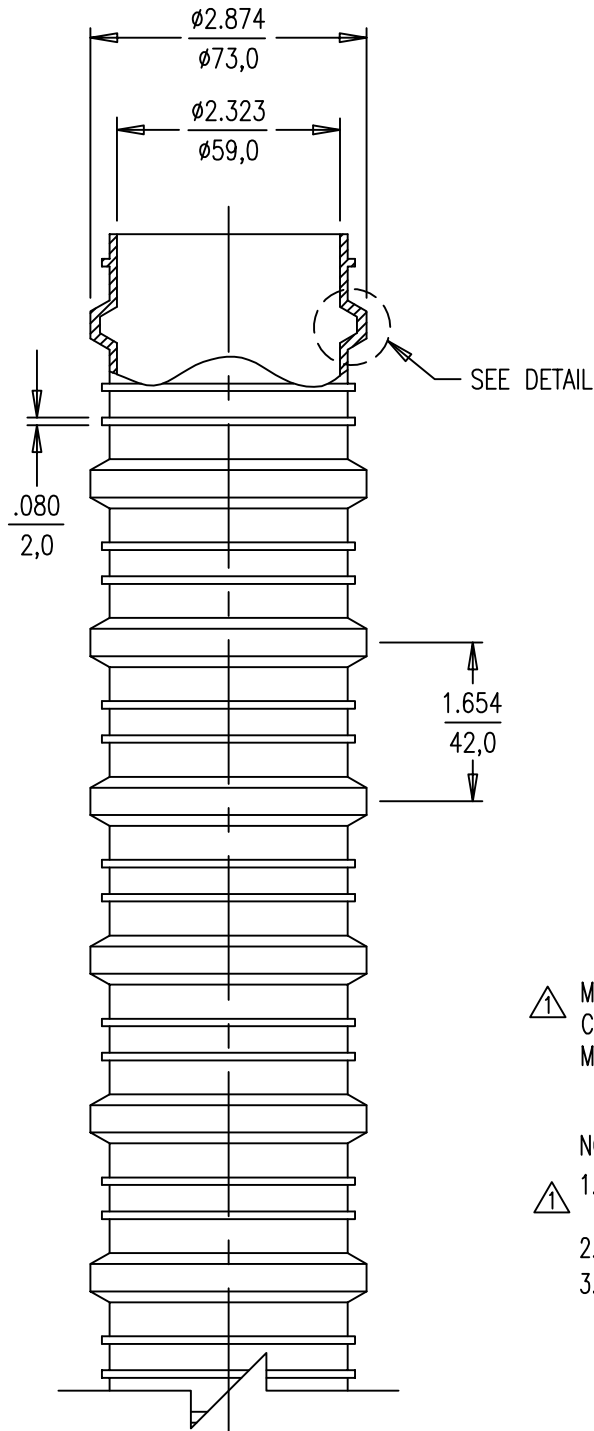
**NOTE:**  
 PRESSURE RATED: 150 PSI.

DIMENSIONS: INCH [mm] mm FOR REFERENCE ONLY		QUALITY PLAN NUMBER:		WEIGHT 0.138 LBS.	REV.	DATE	NAME	PART NUMBER: <b>00 00 634</b>
<b>1/2" NPT BALL VALVE</b>					1	01-11-19	S.I.	
				MATERIAL: PVC	SCALE 1:1			
DATE: 04-30-07	DWG: G. MALECKI	CHK: S.N.	APP: E.A.					DRAWING NUMBER: <b>00 00 634</b>
THIS DRAWING, THE PERTINENT ENCLOSURES, DESCRIPTIONS, CALCULATIONS ETC. AND THEIR CONTENTS ARE THE PROPERTY OF <b>DYWIDAG SYSTEMS INTERNATIONAL, USA, INC.</b> THEY ARE NOT ALLOWED TO BE DUPLICATED WITHOUT OUR PERMISSION. THEY ARE ALSO NOT TO BE SHOWN OR EXPLAINED FOR ANY REASON TO A THIRD PARTY OTHER THAN FOR REASONS EXPRESSLY INTENDED BY DSI'S SUBMITTAL TO THE ORIGINAL RECEIVER. THEY HAVE TO BE RETURNED UPON REQUEST.				<b>DYWIDAG-SYSTEMS INTERNATIONAL, USA, INC.</b> 320 MARMON DRIVE - BOLINGBROOK, IL 60440 PHONE: 630-739-1100 FAX: 630-739-1405			<b>DYWIDAG</b>	



▲ NOTE:  
PRESSURE RATED: 150 PSI.

DIMENSIONS: INCH [mm] mm FOR REFERENCE ONLY		QUALITY PLAN NUMBER:		WEIGHT 0.213 LBS.	REV.	DATE	NAME	PART NUMBER: <b>00 00 834</b>
<b>3/4" NPT BALL VALVE</b>					MATERIAL: PVC	1	01-11-19	
				DATE: 04-30-07	DWG: G. MALECKI	CHK: S.N.	APP: E.A.	SCALE 1:1
THIS DRAWING, THE PERTINENT ENCLOSURES, DESCRIPTIONS, CALCULATIONS ETC. AND THEIR CONTENTS ARE THE PROPERTY OF <b>DYWIDAG SYSTEMS INTERNATIONAL, USA, INC.</b> THEY ARE NOT ALLOWED TO BE DUPLICATED WITHOUT OUR PERMISSION. THEY ARE ALSO NOT TO BE SHOWN OR EXPLAINED FOR ANY REASON TO A THIRD PARTY OTHER THAN FOR REASONS EXPRESSLY INTENDED BY <b>DSI's</b> SUBMITTAL TO THE ORIGINAL RECEIVER. THEY HAVE TO BE RETURNED UPON REQUEST.				<b>DYWIDAG-SYSTEMS INTERNATIONAL, USA, INC.</b> 320 MARMON DRIVE - BOLINGBROOK, IL 60440 PHONE: 630-739-1100 FAX: 630-739-1405				



▲ MATERIAL: POLYPROPYLENE  
 CELL CLASS RANGE: PP0340B44541 TO PP0340B67884  
 MATERIAL MEETS FDOT SPECS. 960-2.4.3.

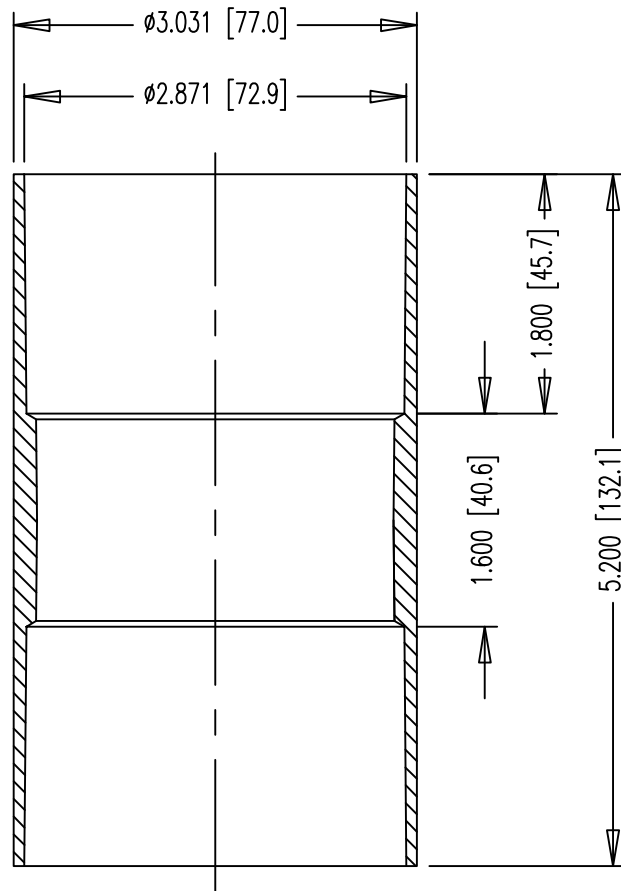
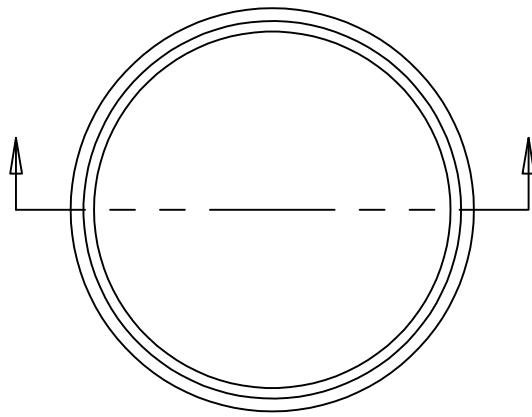
NOTES:

- ▲ 1. STANDARD FIT FOR 5-0.6", 7-0.5", 7-0.6" & 9-0.5" STRANDS AND 1", 1-1/4", & 1-3/8" THREADBARS.  
 2. Min. BENDING RADIUS,  $R_{min} = 22.8$  FT.  
 3. DUCT IS DELIVERED IN STRAIGHT SECTIONS AND IS NOT INTENDED TO BE COILED.

DIMENSIONS: INCH [mm] mm FOR REFERENCE ONLY		QUALITY PLAN NUMBER: QU00041110P		TOLERANCES: $\pm .020$ UNLESS NOTED	WEIGHT 0.296 LBS/FT	REV. 1	DATE 01-11-19	NAME S.I.	PART NUMBER: U00220200
<b>2-3/8" (59mm) CORRUGATED PP DUCT</b>				MATERIAL: SEE ABOVE	SCALE 1:2				DRAWING NUMBER: U00220200
DATE: 04-23-96	DWG: G. MALECKI	CHK: H.K.	APP: K.S.						
<p>THIS DRAWING, THE PERTINENT ENCLOSURES, DESCRIPTIONS, CALCULATIONS ETC. AND THEIR CONTENTS ARE THE PROPERTY OF DYWIDAG SYSTEMS INTERNATIONAL, USA, INC. THEY ARE NOT ALLOWED TO BE DUPLICATED WITHOUT OUR PERMISSION. THEY ARE ALSO NOT TO BE SHOWN OR EXPLAINED FOR ANY REASON TO A THIRD PARTY OTHER THAN FOR REASONS EXPRESSLY INTENDED BY DSI'S SUBMITTAL TO THE ORIGINAL RECEIVER. THEY HAVE TO BE RETURNED UPON REQUEST.</p> <p><b>DYWIDAG-SYSTEMS INTERNATIONAL, USA, INC.</b>          POST TENSIONING / REINFORCING UNIT PHONE: 630-739-1100          320 MARMON DRIVE - BOLINGBROOK, IL FAX: 630-739-1405</p>									







▲ MATERIAL: POLYPROPYLENE  
 CELL CLASS RANGE: PP0340B44541 TO PP0340B67884  
 MATERIAL MEETS FDOT SPECS. 960-2.4.3.

DIMENSIONS: INCH [mm] mm FOR REFERENCE ONLY		QUALITY PLAN NUMBER: QSA0028000P		TOLERANCES: ±.005 UNLESS NOTED	WEIGHT 0.23 LBS.	REV. 1	DATE 01-11-19	NAME S.I.	PART NUMBER: <b>U00220205</b>
<b>Ø2-3/8" (59mm) DUCT COUPLER</b>				MATERIAL: SEE ABOVE	SCALE 2:3				DRAWING NUMBER: <b>U00220205</b>
				DATE: 10-25-99	DWG: G. MALECKI	CHK: S.Y.	APP: K.S.		
THIS DRAWING, THE PERTINENT ENCLOSURES, DESCRIPTIONS, CALCULATIONS ETC. AND THEIR CONTENTS ARE THE PROPERTY OF <b>DYWIDAG SYSTEMS INTERNATIONAL, USA, INC.</b> THEY ARE NOT ALLOWED TO BE DUPLICATED WITHOUT OUR PERMISSION. THEY ARE ALSO NOT TO BE SHOWN OR EXPLAINED FOR ANY REASON TO A THIRD PARTY OTHER THAN FOR REASONS EXPRESSLY INTENDED BY DSI'S SUBMITTAL TO THE ORIGINAL RECEIVER. THEY HAVE TO BE RETURNED UPON REQUEST.				<b>DYWIDAG-SYSTEMS INTERNATIONAL, USA, INC.</b> 320 MARMON DRIVE - BOLINGBROOK, IL 60440 PHONE: 630-739-1100 FAX: 630-739-1405					

<b>DIMENSIONS &amp; ORDERING INFO</b>	P	L	A	-	XXX	-	YYY	-	ZZ	<b>STANDARD ORDERING OPTIONS</b>
										YE - YELLOW, BK - BLACK
										300mm, 450mm, 600mm, 900mm (12", 18", 24", 36")
										63mm -315mm (2-1/2" - 12")
										A - 0.75 mm (30 mils)
										L - 0.80 mm (31 mils)
										P - Tubular

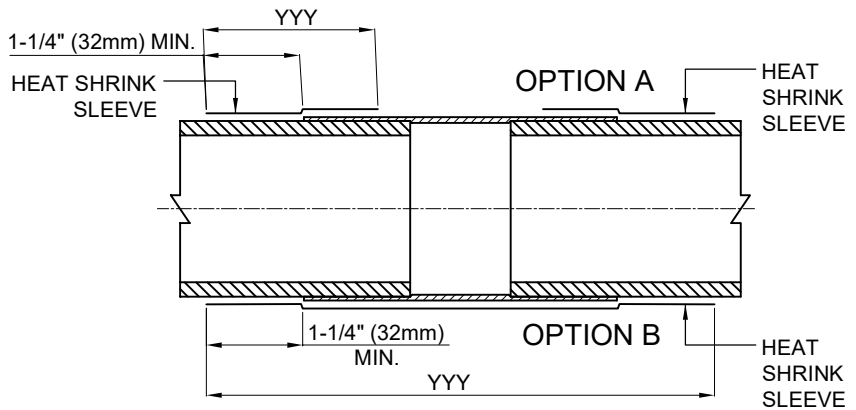
TUBULAR SLEEVE	TUBULAR SLEEVE DIAMETER AS SUPPLIED	TUBULAR SLEEVE DIAMETER FULLY RECOVERED
PLA 63-YYY YE	3.5" [90mm]	2.5" [63mm]
PLA 90-YYY YE	4.8" [120mm]	3.3" [81mm]
PLA 115-YYY BK	5.5" [145mm]	3.8" [98mm]
PLA 125-YYY YE	6.3" [160mm]	4.3" [110mm]
PLA 160-YYY BK	7.5" [190mm]	5.2" [130mm]
⚠ PMA 90/30-YYY BK	3.5" [90mm]	1.2" [30mm]
⚠ PMA 120/40-YYY BK	4.7" [120mm]	1.6" [40mm]

YYY = SLEEVE WIDTH: 300/450/600/900/1500(mm)  
 COLOR: YE = YELLOW; BK = BLACK

PMA - HIGH SHRINK SLEEVE.  
 HIGH SHRINK TUBULAR BACKING.

**MATERIAL:**  
 ACCORDING TO FDOT SPECIFICATION  
 POST TENSIONING, SECTION 462 - 4, 2, 6, 3.

- NOTES:**
- ORDER DIRECT FROM CANUSA  
 TEL. 281 367 - 8866  
 FAX. 281 367 - 4304
  - SELECT ORDER LENGTH AS A MULTIPLE OF THE ACTUAL LENGTH.
  - OTHER COLORS SLEEVE MAY BE AVAILABLE UPON REQUEST.
  - ALWAYS HEAT THE DUCT ENDS FIRST.



**NOTE:**  
 FOLLOW MANUFACTURER'S  
 INSTALLATION INSTRUCTIONS.

	DUCT SIZE ⚠	STRAND SYSTEM	BAR SYSTEM	HEAT SHRINK SLEEVE SIZE	PART NUMBER
CORRUGATED DUCT	1" x 3" (25mm x 76mm)	4-0.6"		PLA-63-450 YE	U00044063
	2-3/8" (59mm)	7-0.6"		PLA-63-450 YE	U00044063
			1", 1-1/4", 1-3/8"	PMA-90/30-450 BK ⚠	U00044030
	3" (76mm)		1 3/4"	⚠ PMA-120/40-450 BK	⚠ U00044040
	3-3/8" (85mm)	12-0.6"		PLA-90-450 YE	U00044090
	4" (100mm)		2-1/2"	PLA-90-450 YE	U00044090
	4" (100mm)	19-0.6"		PLA-115-450 BK	U00044115
	4-1/2" (115mm)	27-0.6"		PLA-125-450 YE	U00044125
5-1/8" (130mm)	31-0.6", 37-0.6"		PLA-160-450 BK	U00044160	
⚠ SMOOTH DUCT	3" SDR 17 HDPE PIPE		1-3/8"	PLA-63-450 YE	U00044063

DIMENSIONS: INCH [mm]  
 mm FOR REFERENCE ONLY

### HEAT SHRINK SLEEVE SIZES FOR INTERNAL GROUTED APPLICATIONS

DATE: 07-31-19    DWG: G. Malecki    CHK: S.I.    APP: S.I.

THIS DRAWING, THE PERTINENT ENCLOSURES, DESCRIPTIONS, CALCULATIONS ETC. AND THEIR CONTENTS ARE THE PROPERTY OF DYWIDAG SYSTEMS INTERNATIONAL, USA, INC. THEY ARE NOT ALLOWED TO BE DUPLICATED WITHOUT OUR PERMISSION. THEY ARE ALSO NOT TO BE SHOWN OR EXPLAINED FOR ANY REASON TO A THIRD PARTY OTHER THAN FOR REASONS EXPRESSLY INTENDED BY DSI'S SUBMITTAL TO THE ORIGINAL RECEIVER. THEY HAVE TO BE RETURNED UPON REQUEST.

REV.	DATE	NAME	ECRN
⚠	05-28-20	S.I.	

PART NUMBERS:

**SEE TABLE ABOVE**

DRAWING NUMBER:  
**U00044000**

**DYWIDAG-SYSTEMS INTERNATIONAL, USA, INC.**  
 320 MARMON DRIVE - BOLINGBROOK, IL 60440  
 PHONE: 630-739-1100    FAX: 630-739-1405

