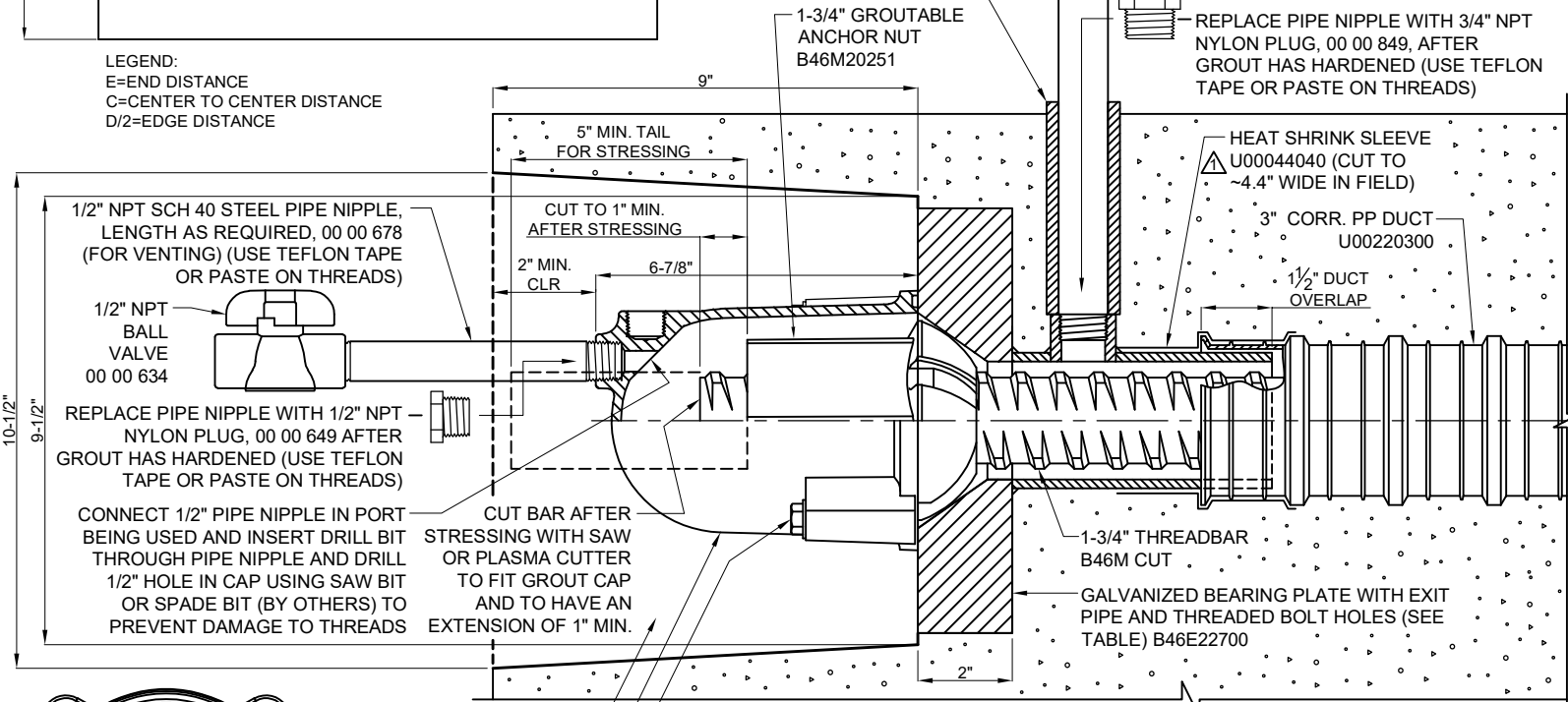
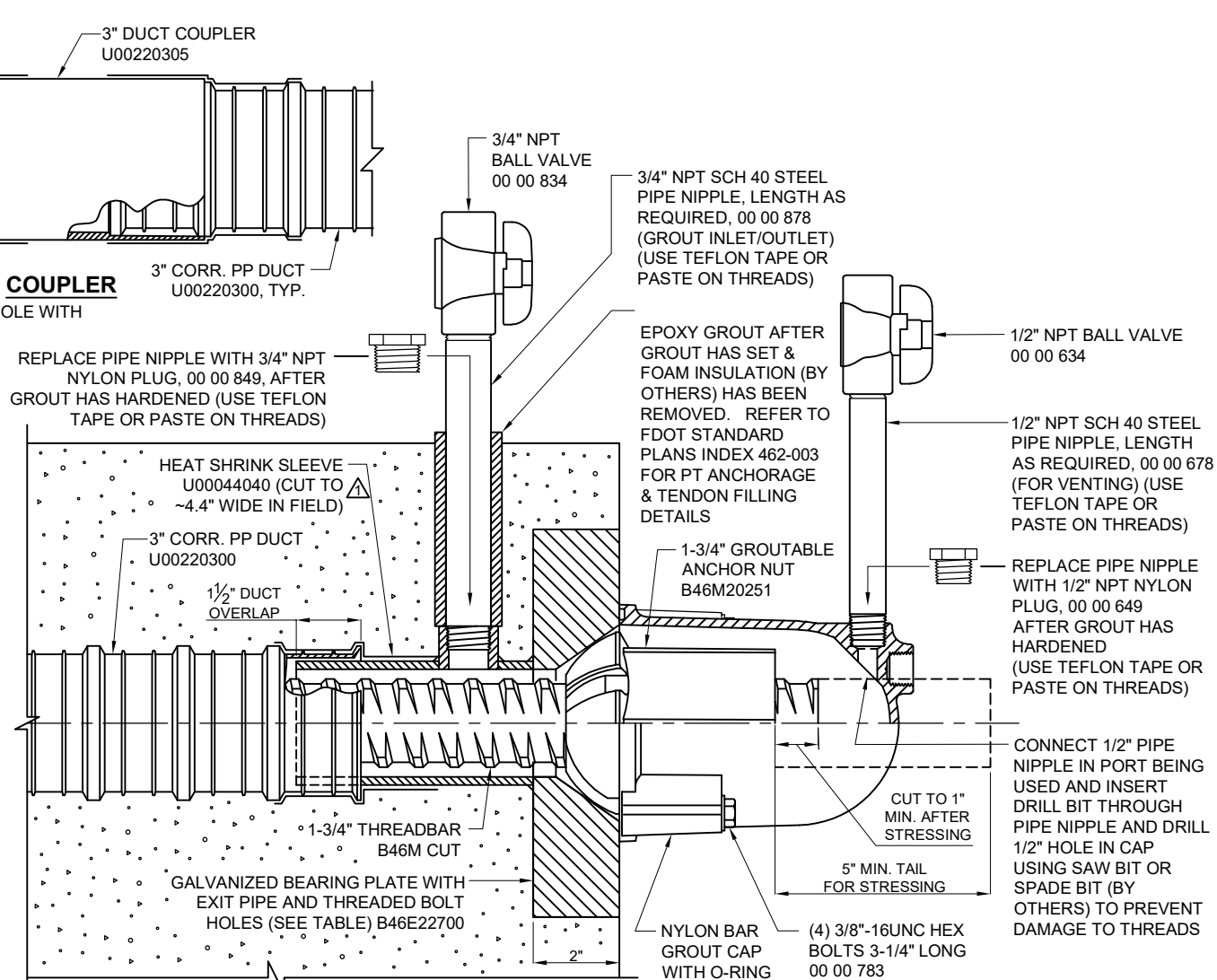


LEGEND:
E=END DISTANCE
C=CENTER TO CENTER DISTANCE
D/2=EDGE DISTANCE

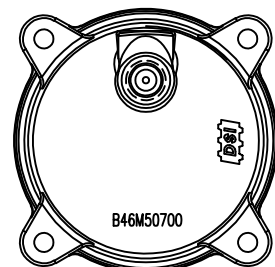
FILL HOLE WITH EPOXY GROUT AFTER GROUT HAS SET & FOAM INSULATION (BY OTHERS) HAS BEEN REMOVED. REFER TO FDOT STANDARD PLANS INDEX 462-003 FOR PT ANCHORAGE & TENDON FILLING DETAILS



BLOCKOUT DETAIL



SURFACE MOUNT DETAIL



CAP END VIEW

FILL BLOCKOUT WITH EPOXY GROUT AFTER STRESSING & TENDON IS INSPECTED
 NYLON BAR GROUT CAP WITH O-RING B46M50700
 (4) 3/8"-16UNC HEX BOLTS, 3-1/4" LONG 00 00 783, WITH WASHERS 00 00 774

WARNING: READ AND COMPLY WITH ALL APPLICABLE SAFETY AND OPERATING INSTRUCTIONS AND WARNINGS FOR THREADBAR STRESSING BEFORE STARTING ANY WORK OR OPERATION.

CAUTION: WHEN PRESSURIZING GROUT CAPS, DO NOT STAND BEHIND CAPS!

CAUTION: WHEN USING HIGH STRENGTH DYWIDAG THREADBAR® (GRADE 150) DO NOT WELD TO BAR. DO NOT USE BAR AS GROUND CONNECTION FOR WELDING. DO NOT ALLOW HOT SLAG OR SPARKS TO TOUCH BAR. DO NOT DAMAGE BAR SURFACE. DO NOT USE BARS WITH KINKS OR SHARP BENDS. FAILURE TO HEED THIS WARNING COULD CAUSE BAR TO BREAK RESULTING IN INJURY OR DAMAGE

| Plate Type | Part No | Width, in | Length, in | Thickness t, in |
|------------|-----------|-----------|------------|-----------------|
| Square | B46E22700 | 9 | 9 | 2 |

| Plate Type | Concrete strength f _{ci} , ksi | Depth, D (in) | Minimum distances, in | |
|------------|---|---------------|-----------------------|-------------|
| | | | End dist, E | c/c dist, C |
| Square | 6.5 | 13.0 | 6.5 | 10.0 |
| | 6.0 | 14.0 | 7.0 | 11.0 |
| | 5.5 | 15.0 | 7.5 | 12.0 |
| | 5.0 | 16.0 | 8.0 | 13.0 |
| | 4.5 | 18.0 | 9.0 | 15.0 |
| | 4.0 | 20.0 | 10.0 | 17.0 |

| MATERIAL LIST | | |
|------------------------|---|--|
| PART NO. | DESCRIPTION | MATERIAL SPECIFICATION |
| B46M CUT | 1-3/4" (46mm) THREADBAR | ASTM A722 TYPE II STEEL |
| B46E22700 | 9"x9"x2" SQ. BEARING PLATE WITH EXIT PIPE 2-7/8" OD x 3/16" WALL, 5-1/2" LONG MECHANICAL TUBING AND BOLT HOLES, GALV. | STEEL PLATE: ASTM A36, MECHANICAL TUBE: ASTM A512, A513 OR A519, ASSEMBLY GALVANIZED |
| B46M50700 | NYLON BAR GROUT CAP WITH O-RING | CAP: NYLON 6, 20% GLASS FIBER FILLED O-RING: EPDM |
| 00 00 783 00 00 774 | (4) 3/8"-16UNC HEX BOLTS, 3-1/4" LONG 3/8" NARROW WASHERS | 316L STAINLESS STEEL |
| B46M20251 | 1-3/4" GROUTABLE ANCHOR NUT | FORGING, NORMALIZED C1045 |
| 00 00 649 | 1/2" NPT PLUG | NYLON 6, WHITE |
| 00 00 678 | 1/2" NPT NIPPLE, LENGTH AS REQ'D (TEMPORARY) | SCH 40 BLACK WELDED STEEL |
| 00 00 878 | 3/4" NPT NIPPLE, LENGTH AS REQ'D (TEMPORARY) | SCH 40 BLACK WELDED STEEL |
| 00 00 849 | 3/4" NPT PLUG | NYLON 6, WHITE |
| 00 00 634 | 1/2" NPT BALL VALVE (TEMPORARY) | PVC |
| 00 00 834 | 3/4" NPT BALL VALVE (TEMPORARY) | PVC |
| U00220300 | 3" (76mm) CORRUGATED DUCT | POLYPROPYLENE |
| U00220305 | (OPTIONAL) 3" (76mm) DUCT COUPLER | POLYPROPYLENE |
| U00044040 | HEAT SHRINK SLEEVE, PMA-120/40-450-BK | ACCORD. TO FDOT SPEC. P.T. SEC. 960-2.2.1.8 |
| U00044090 | HEAT SHRINK SLEEVE, PLA-90-450-YE | ACCORD. TO FDOT SPEC. P.T. SEC. 960-2.2.1.8 |
| ANS | TEFLON TAPE OR PASTE | - |

- NOTES:
- USERS SHALL REFER TO FDOT STANDARD SPECIFICATIONS AND PROJECT SPECIFIC CRITERIA FOR TENDON INSTALLATION, STRESSING, & GROUTING.
 - REQUIRED REINFORCING BARS ARE NOT SHOWN ON THIS DRAWING.
 - MAXIMUM ANGULAR MISALIGNMENT WHEN USING ANCHOR NUT: ±2°.
 - CENTER TO CENTER, END AND EDGE DISTANCE DEPENDS ON THE LOCATION OF THE BAR AND CONCRETE STRENGTH, (SEE TABLE).
 - C/C DISTANCE = 2 X END DISTANCE - 2 X CONCRETE COVER (2" ASSUMED). TIGHTER C/C DISTANCE SHOULD BE EVALUATED.
 - DUCT IS DELIVERED IN STRAIGHT SECTIONS AND IS NOT INTENDED TO BE COILED.
 - BURSTING REINFORCEMENT IS NOT SHOWN AND WILL BE INCLUDED WITH THE SHOP DRAWINGS.
 - THREADBAR TENDONS ARE STRESSED FROM ONE END ONLY.

DIMENSIONS: INCH

INTERNAL GROUTED SYSTEM FOR 1-3/4" (46mm) THREADBAR ASSEMBLY

DATE: 08-01-19 DWG: G. MALECKI CHK: S.I. APP: S.I.

THIS DRAWING, THE PERTINENT ENCLOSURES, DESCRIPTIONS, CALCULATIONS ETC. AND THEIR CONTENTS ARE THE PROPERTY OF DYWIDAG SYSTEMS INTERNATIONAL, USA, INC. THEY ARE NOT ALLOWED TO BE DUPLICATED WITHOUT OUR PERMISSION. THEY ARE ALSO NOT TO BE SHOWN OR EXPLAINED FOR ANY REASON TO A THIRD PARTY OTHER THAN FOR REASONS EXPRESSLY INTENDED BY DSI'S SUBMITTAL TO THE ORIGINAL RECEIVER. THEY HAVE TO BE RETURNED UPON REQUEST.

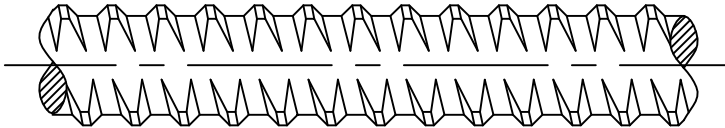
| REV. | DATE | NAME | |
|------|----------|------|--|
| 1 | 08-13-20 | S.I. | |

PT46M200

SCALE: 1:4, 1:8

DYWIDAG-SYSTEMS INTERNATIONAL, USA, INC.
 POST TENSIONING / REINFORCING UNIT PHONE: 630-739-1100
 320 MARMON DRIVE - BOLINGBROOK, IL FAX: 630-739-1405

RIGHT HAND THREAD



| | <u>PART NUMBERS</u> | <u>SPECIFICATIONS</u> |
|---------------|---------------------|-----------------------|
| FOR BARE BAR: | B46M CUT | ASTM A722 TYPE II |

| <u>PHYSICAL PROPERTIES</u> | |
|-----------------------------|---------------------------|
| EFFECTIVE AREA: | 2.58 SQ.IN. (1664 SQ.mm) |
| ULTIMATE STRENGTH: | 150 KSI (1035 N/SQ.mm) |
| ULTIMATE LOAD: | 387 KIPS (1721 KN) |
| YIELD LOAD: | 310 KIPS (1378 KN) |
| WEIGHT: | 9.37 LBS./FT. (13.9 Kg/m) |
| MAX. BAR ϕ INCL. RIBS: | 2.075 IN. (52.7mm) |
| AVERAGE CORE ϕ : | 1.830 IN. (46.5mm) |
| PITCH: | 0.827 IN. (21.0mm) |

| | | | | | | | | |
|--|-------------|------------------------------------|-----------|--|--------------|------|------|------------------------------------|
| DIMENSIONS: INCH [mm] mm FOR REFERENCE ONLY | | QUALITY PLAN NUMBER: QB0000010B | | REV. | DATE | NAME | ECRN | PART NUMBER: B46M CUT |
| 46mm THREADBAR GR150 HR | | | | MATERIAL: SEE ABOVE | SCALE NTS | | | |
| | | | | | | | | |
| DATE: 03-23-17 | DWG: S.YANG | CHK: S.Y. | APP: S.E. | | | | | DRAWING NUMBER: B46M CUT |
| THIS DRAWING, THE PERTINENT ENCLOSURES, DESCRIPTIONS, CALCULATIONS ETC. AND THEIR CONTENTS ARE THE PROPERTY OF DYWIDAG SYSTEMS INTERNATIONAL, USA, INC. THEY ARE NOT ALLOWED TO BE DUPLICATED WITHOUT OUR PERMISSION. THEY ARE ALSO NOT TO BE SHOWN OR EXPLAINED FOR ANY REASON TO A THIRD PARTY OTHER THAN FOR REASONS EXPRESSLY INTENDED BY DSI's SUBMITTAL TO THE ORIGINAL RECEIVER. THEY HAVE TO BE RETURNED UPON REQUEST. | | | | DYWIDAG-SYSTEMS INTERNATIONAL, USA, INC. 320 MARMON DRIVE - BOLINGBROOK, IL 60440 PHONE: 630-739-1100 FAX: 630-739-1405 | | | | |

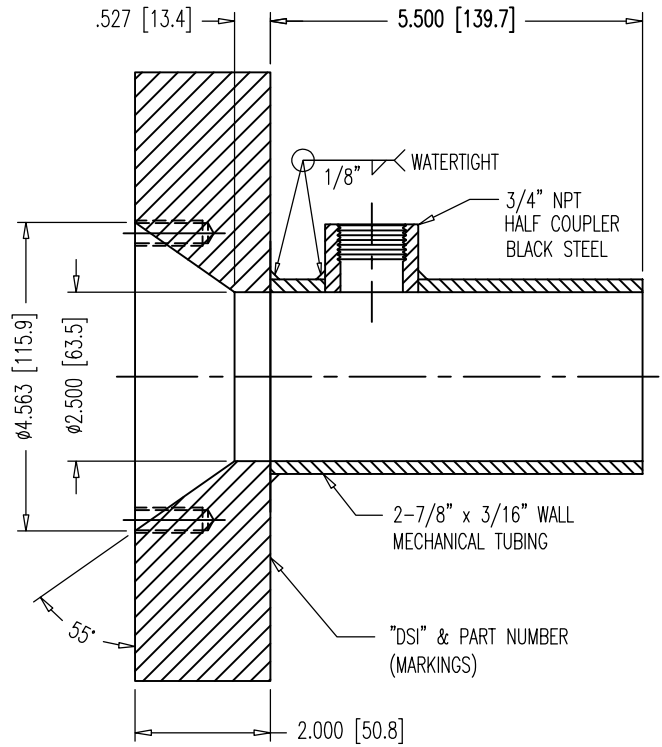
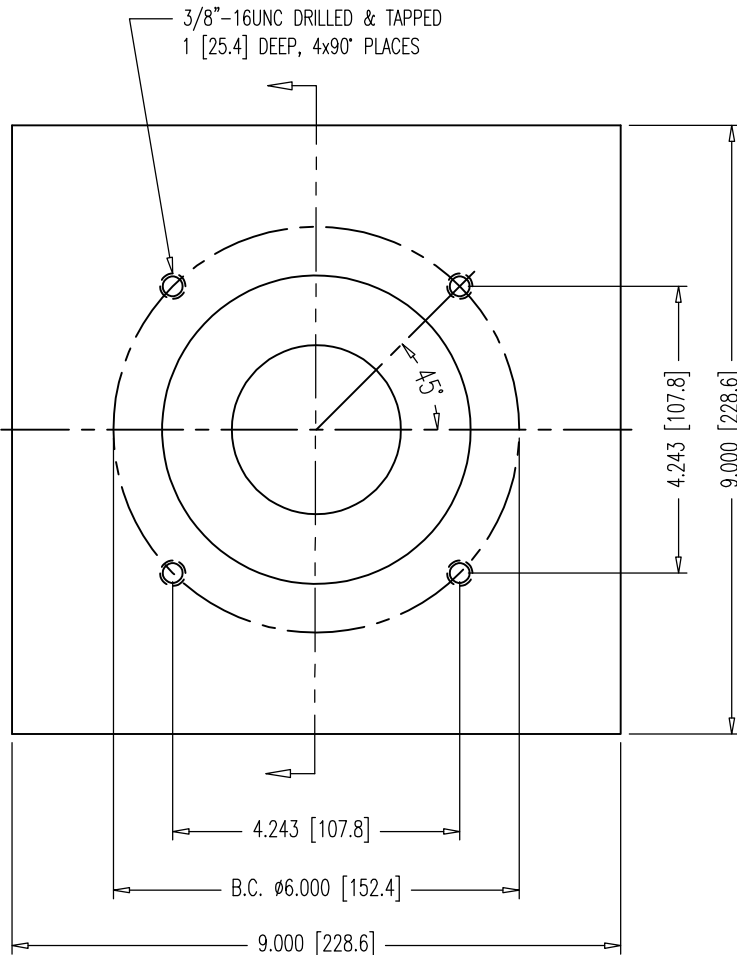
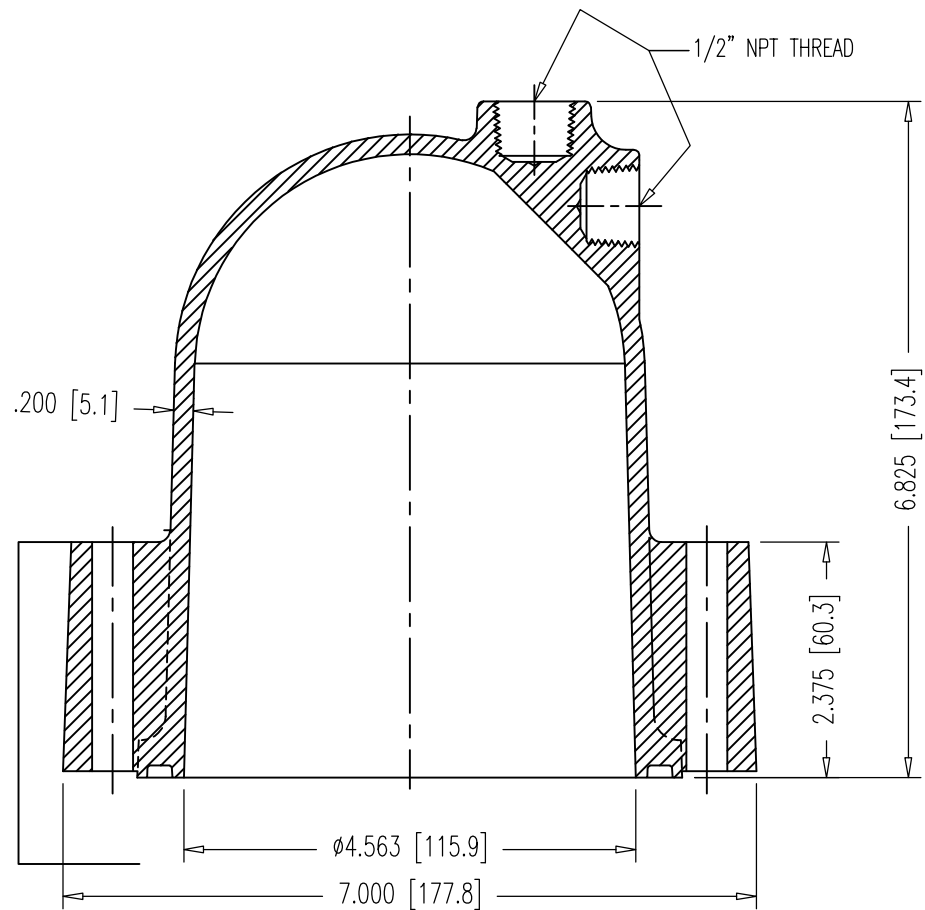


PLATE MATERIAL: ASTM A36
MECHANICAL TUBE MATERIAL
SHALL BE A512, A513 OR A519

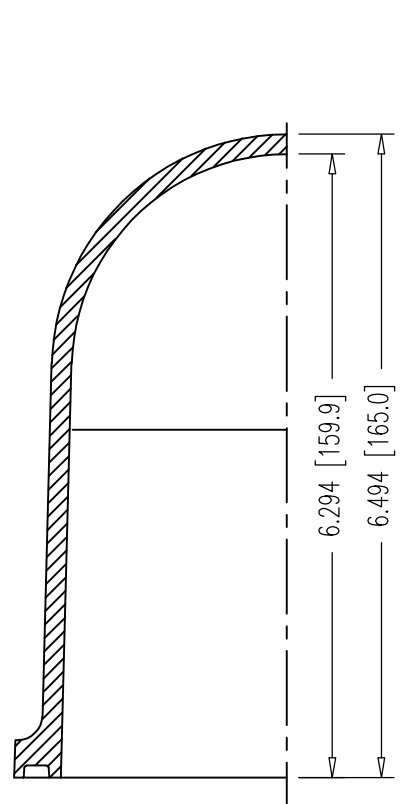
NOTES:

1. PLATE AND PIPE GALVANIZED ACCORDING TO ASTM A123 AFTER WELDING.
2. DIMENSIONS AND TOLERANCES APPLY TO UNCOATED PLATE AND TUBING.
3. ENSURE THREADABILITY OF TAPPED HOLES IN PLATES IF THEY ARE REQUIRED.
4. 76mm CORR. PP DUCT, U00220300 & 3" SDR17 HDPE PIPE, U00055112 FITS OVER TUBING.

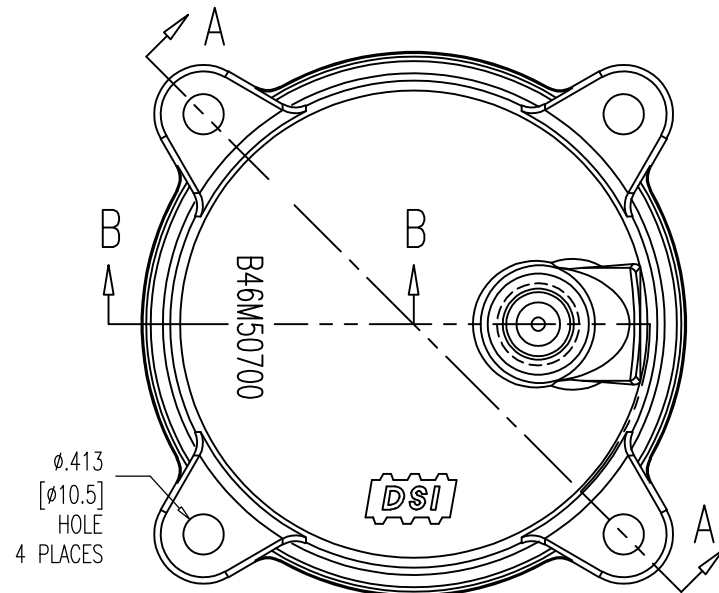
| | | | | | | | | | | | |
|--|-----------------|-------------------------------------|-----------|---|-------------------------|------|----------------|------|------|-------------------------------------|--|
| DIMENSIONS: INCH [mm] mm FOR REFERENCE ONLY | | QUALITY PLAN NUMBER: QBE0021200L | | TOLERANCES: \pm .020 UNLESS NOTED | WEIGHT: 43.4 LBS. | REV. | DATE | NAME | ECRN | PART NUMBER: B46E22700 | |
| SQUARE BEARING PLATE WITH EXIT PIPE FOR 1-3/4" THREADBAR | | | | MATERIAL: SEE ABOVE | SCALE: 1:3 | | | | | DRAWING NUMBER: B46E22700 | |
| DATE: 08-16-07 | DWG: G. MALECKI | CHK: S.N. | APP: E.A. | | | | | | | | |
| THIS DRAWING, THE PERTINENT ENCLOSURES, DESCRIPTIONS, CALCULATIONS ETC. AND THEIR CONTENTS ARE THE PROPERTY OF DYWIDAG SYSTEMS INTERNATIONAL, USA, INC. THEY ARE NOT ALLOWED TO BE DUPLICATED WITHOUT OUR PERMISSION. THEY ARE ALSO NOT TO BE SHOWN OR EXPLAINED FOR ANY REASON TO A THIRD PARTY OTHER THAN FOR REASONS EXPRESSLY INTENDED BY DSI'S SUBMITTAL TO THE ORIGINAL RECEIVER. THEY HAVE TO BE RETURNED UPON REQUEST. | | | | DYWIDAG-SYSTEMS INTERNATIONAL, USA, INC. 320 MARMON DRIVE - BOLINGBROOK, IL 60440 PHONE: 630-739-1100 FAX: 630-739-1405 | | | DYWIDAG | | | | |



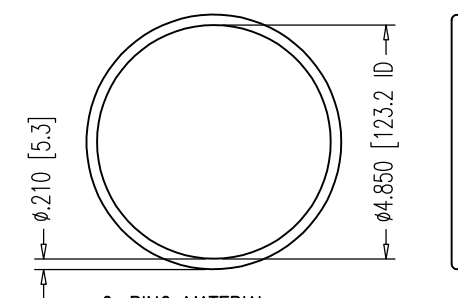
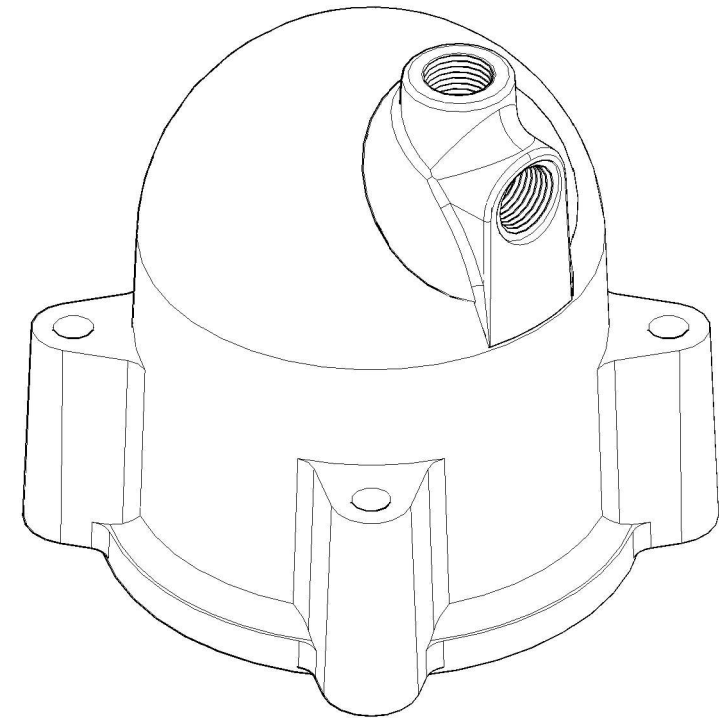
SECTION A-A



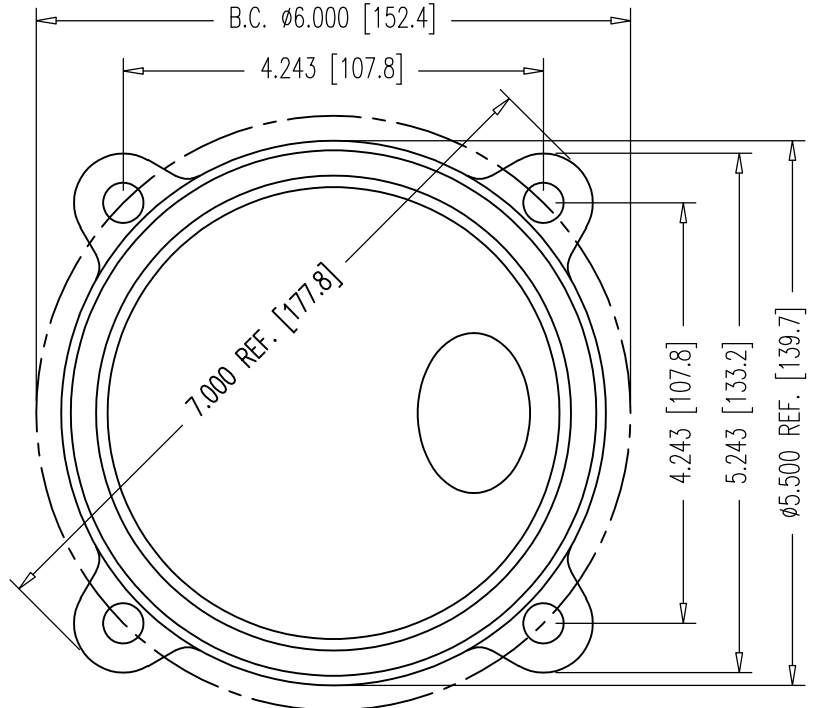
SECTION B-B



TOP VIEW



O-RING MATERIAL:
 EPDM MEETING FDOT
 SPECIFICATIONS 960-2.2.1.7.
 #352 O-RING
 4-7/8" x 5-1/4" x 3/16"
 SCALE: NTS

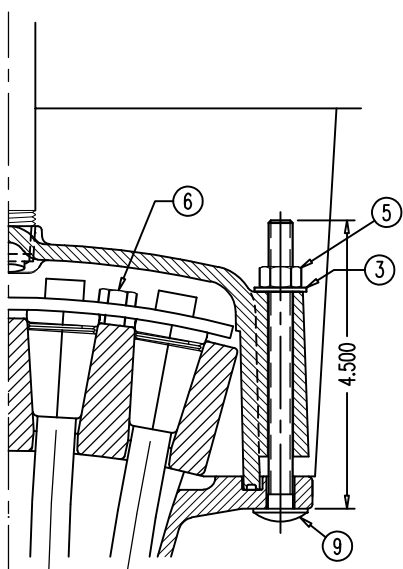


BOTTOM VIEW

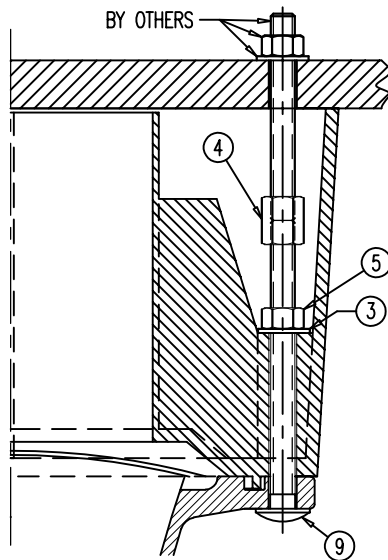
- NOTES:
1. USE 3/8"-16UNC 316L S.S. HEX BOLTS, 3-1/4" LONG 00 00 783 W/SMALL DIA. WASHER 00 00 774.
 2. INSTALL O-RING IN GROOVE USING DROPS OF LIQUID ADHESIVE BEFORE SHIPPING.
 3. THE NYLON CONFORMS TO ASTM D5989, WITH CELL CLASSIFICATION S-PA0401 (ULTIMATE STRENGTH 10,000 PSI MIN., WITH UV STABILIZER ADDED).
 4. DRILL 1/2" [12.7] HOLE IN PORT BEING USED-CAUTION-RECOMMEND USING HOLE SAW BIT OR SPADE BIT (BY OTHERS), BE CAREFULL TO PREVENT DAMAGE TO THREADS OR CAP.
 5. WHEN PRESSURIZING GROUT CAPS, DO NOT STAND BEHIND CAPS!

| | | | | | | | | | |
|---|-----------------|-------------------------------------|-----------|---|---------------------------------|------------------|--------------|------|-------------------------------------|
| DIMENSIONS: INCH [mm] mm FOR REFERENCE ONLY | | QUALITY PLAN NUMBER: QS60072300P | | TOLERANCES: SEE TOLERANCE NOTE | WEIGHT ~1.4 LBS. | REV. 10/04/18 | DATE S.I. | NAME | PART NUMBER: B46M50700 |
| BAR GROUT CAP WITH O-RING FOR 1-3/8" HEX NUT AND ALL 1-3/4" NUTS | | | | MATERIAL: NYLON 6 20% GLASS FIBER FILLED COLOR: BLACK | SCALE 1:2 UNLESS NOTED | | | | DRAWING NUMBER: B46M50700 |
| DATE: 03-22-18 | DWG: G. MALECKI | CHK: S.Y. | APP: S.E. | THIS DRAWING, THE PERTINENT ENCLOSURES, DESCRIPTIONS, CALCULATIONS ETC. AND THEIR CONTENTS ARE THE PROPERTY OF DYWIDAG SYSTEMS INTERNATIONAL, USA, INC. THEY ARE NOT ALLOWED TO BE DUPLICATED WITHOUT OUR PERMISSION. THEY ARE ALSO NOT TO BE SHOWN OR EXPLAINED FOR ANY REASON TO A THIRD PARTY OTHER THAN FOR REASONS EXPRESSLY INTENDED BY DSI'S SUBMITTAL TO THE ORIGINAL RECEIVER. THEY HAVE TO BE RETURNED UPON REQUEST. | | | | | |
| | | | | DYWIDAG-SYSTEMS INTERNATIONAL, USA, INC. 320 MARMON DRIVE - BOLINGBROOK, IL 60440 PHONE: 630-739-1100 FAX: 630-739-1405 | | | | | |

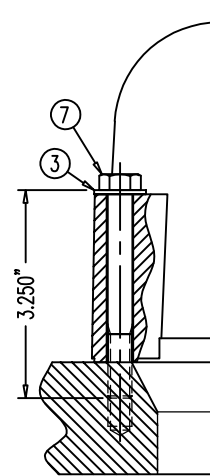




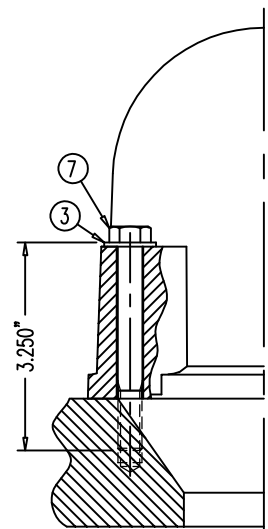
KEEPER PLATE 68 04 2637 ON
WEDGE PLATE 68 04 2534A &
NYLON CAP 68 04 2539 ON
FLAT ANCHOR 68 04 2548



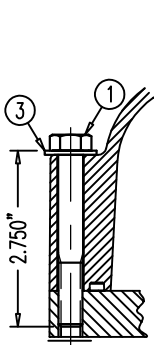
POCKET FORMER 68 04 2640
ON FLAT ANCHOR 68 04 2548



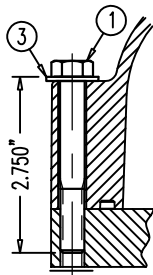
NYLON BAR CAP B36E50700 OR 50700A
ON GALV. BEARING PLATE
B26E22510, 22610, 22700, 22800,
B32E22510, 22610, 22700, 22800,
B36E22410, 22420, 22910, 22510,
22610, 22700, 22800 & NYLON
BAR CAP B66E50700 OR 50700A
ON GALV. BEARING PLATE B66E22700



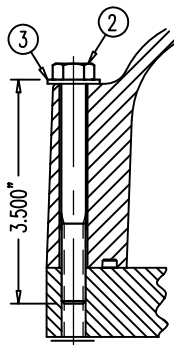
NYLON BAR CAP
B46M50700
OR 50700A
ON GALV.
BEARING PLATE
B46E22700 &
B46E22800



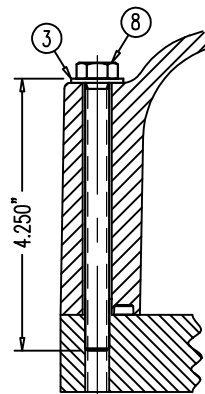
NYLON CAP
68 07 7230 OR 7230A
ON MPA 68 07 248



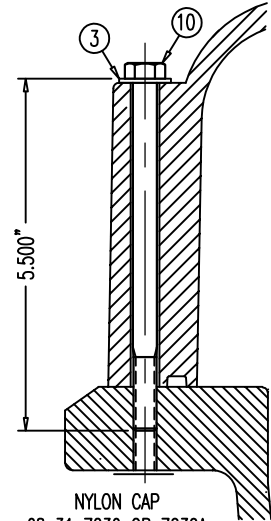
NYLON CAP
68 12 7230 OR 7230A
ON MPA 68 12 248



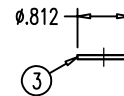
NYLON CAP
68 19 7230 OR 7230A
ON MPA 68 19 248



NYLON CAP
68 27 7230 OR 7230A
ON MPA 68 27 248



NYLON CAP
68 31 7230 OR 7230A
ON MPA 68 31 248



TYPE A NARROW WASHER
FOR 3/8"-UNC BOLT

NOTE:
THE 316L S.S. BOLTS ARE SPECIAL ORDER.
ALL WASHERS, HEX NUTS & COUPLERS HAVE
NO MARKINGS.

| POS. | PART NUMBER | DISCRIPTION (ALL PARTS 316L STAINLESS STEEL UNLESS NOTED) |
|------|-------------|---|
| ① | 00 00 771 | 3/8"-16UNC HEX BOLT, 2-3/4" LONG (1" LONG THREAD) |
| ② | 00 00 772 | 3/8"-16UNC HEX BOLT, 3-1/2" LONG (1" LONG THREAD) |
| ③ | 00 00 774 | TYPE A NARROW WASHER FOR 3/8"-UNC BOLT |
| ④ | 00 00 776 | 3/8"-16UNC COUPLER, ZINC COATED |
| ⑤ | 00 00 777 | 3/8"-16UNC HEX NUT |
| ⑥ | 00 00 778 | 5/16"-18UNC HEX BOLT, 7/8" LONG, ZINC PLATED |
| ⑦ | 00 00 783 | 3/8"-16UNC HEX BOLT, 3-1/4" LONG (1" LONG THREAD) |
| ⑧ | 00 00 784 | 3/8"-16UNC HEX BOLT, 4-1/4" LONG (FULL THREAD) |
| ⑨ | 00 00 789 | 3/8"-16UNC CARRIAGE BOLT, 4-1/2" LONG |
| ⑩ | 00 00 790 | 3/8"-16UNC CARRIAGE BOLT, 5-1/2" LONG |

DIMENSIONS: INCH

QUALITY PLAN NUMBER:

STAINLESS STEEL 316L BOLTS AND WASHER FOR NYLON CAPS

DATE: 09-10-04 DWG: G. MALECKI CHK: E.A. APP: K.S.

THIS DRAWING, THE PERTINENT ENCLOSURES, DESCRIPTIONS, CALCULATIONS ETC. AND THEIR CONTENTS ARE THE PROPERTY OF DYWIDAG SYSTEMS INTERNATIONAL, USA, INC. THEY ARE NOT ALLOWED TO BE DUPLICATED WITHOUT OUR PERMISSION. THEY ARE ALSO NOT TO BE SHOWN OR EXPLAINED FOR ANY REASON TO A THIRD PARTY OTHER THAN FOR REASONS EXPRESSLY INTENDED BY DSI'S SUBMITTAL TO THE ORIGINAL RECEIVER. THEY HAVE TO BE RETURNED UPON REQUEST.

SCALE
1:3

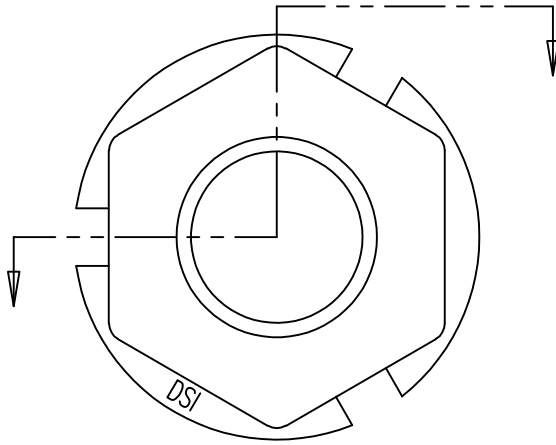
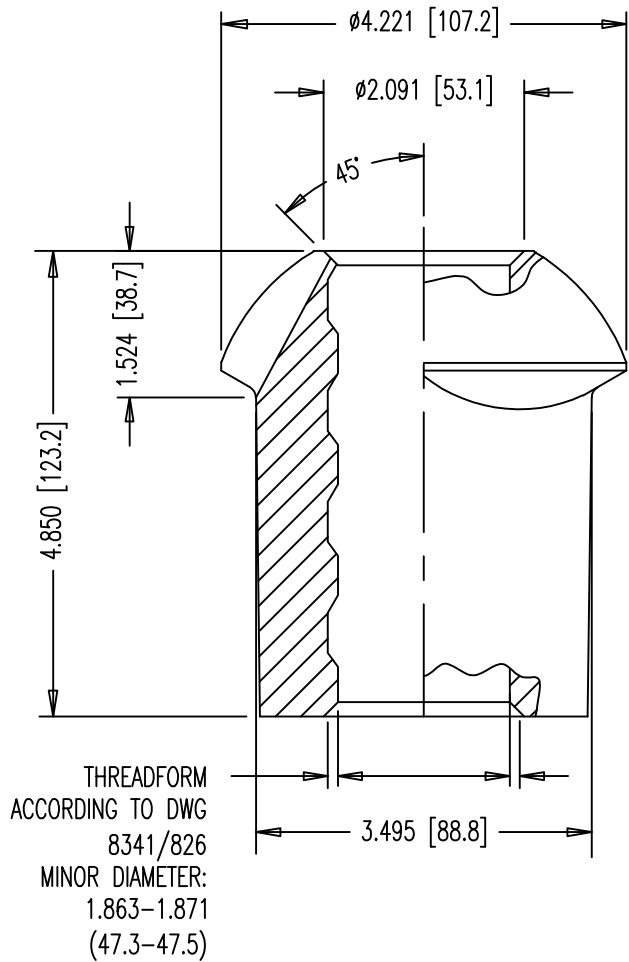
| REV. | DATE | NAME | NAME |
|------|----------|------|------|
| 1 | 05/01/19 | S.I. | |
| 2 | 05/28/20 | S.I. | |

PART NUMBERS:
SEE TABLE

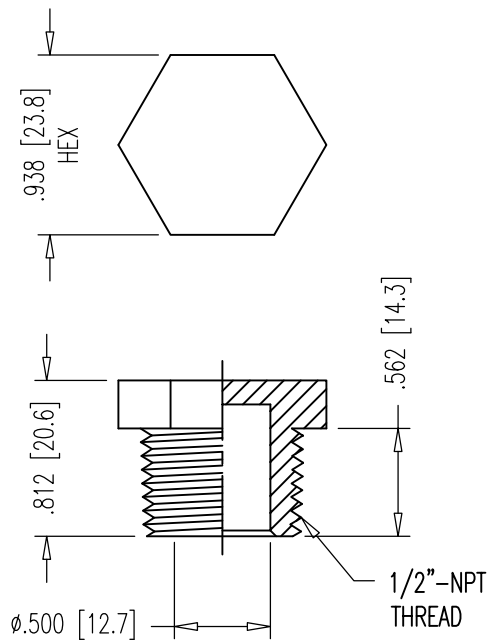
DRAWING NUMBER:
00 00 770

DYWIDAG-SYSTEMS INTERNATIONAL, USA, INC.
POST TENSIONING / REINFORCING UNIT PHONE: 630-739-1100
320 MARMON DRIVE - BOLINGBROOK, IL FAX: 630-739-1405



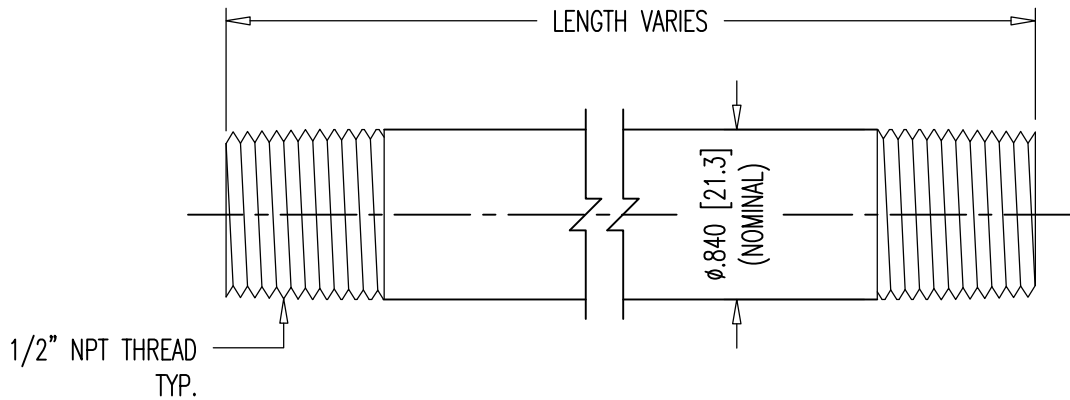


| | | | | | | | | | |
|--|--|-------------------------------------|--|--|-----------------------|-----------|----------------|------|-------------------------------------|
| DIMENSIONS: INCH [mm] mm FOR REFERENCE ONLY | | QUALITY PLAN NUMBER: QBE0020100F | | TOLERANCES: ±.035 UNLESS NOTED | WEIGHT 9.9 LBS. | REV. | DATE | NAME | PART NUMBER: B46M20251 |
| GROUTABLE ANCHOR NUT FOR 1-3/4" HR BAR, 150 KSI | | | | MATERIAL: REF. ANCHOR NUT BLANK DRAWING B46M20191 | SCALE 1:2 | | | | DRAWING NUMBER: B46M20200 |
| | | | | DATE: 04-30-18 | DWG: S.YANG | CHK: S.Y. | APP: S.E. | | |
| THIS DRAWING, THE PERTINENT ENCLOSURES, DESCRIPTIONS, CALCULATIONS ETC. AND THEIR CONTENTS ARE THE PROPERTY OF DYWIDAG SYSTEMS INTERNATIONAL, USA, INC. THEY ARE NOT ALLOWED TO BE DUPLICATED WITHOUT OUR PERMISSION. THEY ARE ALSO NOT TO BE SHOWN OR EXPLAINED FOR ANY REASON TO A THIRD PARTY OTHER THAN FOR REASONS EXPRESSLY INTENDED BY DSI 's SUBMITTAL TO THE ORIGINAL RECEIVER. THEY HAVE TO BE RETURNED UPON REQUEST. | | | | DYWIDAG-SYSTEMS INTERNATIONAL, USA, INC. 320 MARMON DRIVE - BOLINGBROOK, IL 60440 PHONE: 630-739-1100 FAX: 630-739-1405 | | | DYWIDAG | | |




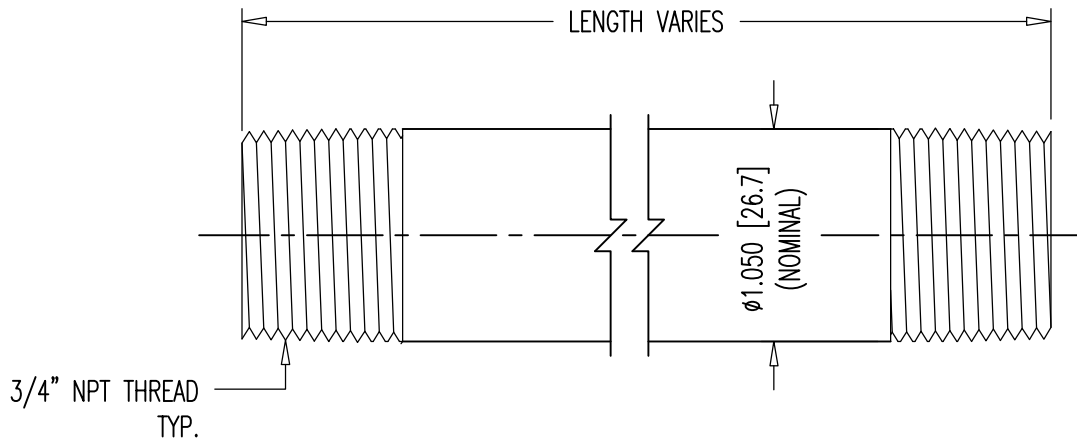
PRESSURE RATED: 150 PSI

| | | | | | | | | | |
|--|--|----------------------|--|---|-----------------|-----------|-----------|--------------------------------------|----------------------------------|
| DIMENSIONS: INCH [mm] mm FOR REFERENCE ONLY | | QUALITY PLAN NUMBER: | | WEIGHT .006 LBS. | REV. | DATE | NAME | ECRN | PART NUMBER: 00 00 649 |
| 1/2" NPT NYLON PLUG | | | | | | | | | |
| | | | | DATE: 03-12-19 | DWG: G. MALECKI | CHK: S.I. | APP: S.I. | MATERIAL: NYLON 6 COLOR: WHITE | |
| THIS DRAWING, THE PERTINENT ENCLOSURES, DESCRIPTIONS, CALCULATIONS ETC. AND THEIR CONTENTS ARE THE PROPERTY OF DYWIDAG SYSTEMS INTERNATIONAL, USA, INC. THEY ARE NOT ALLOWED TO BE DUPLICATED WITHOUT OUR PERMISSION. THEY ARE ALSO NOT TO BE SHOWN OR EXPLAINED FOR ANY REASON TO A THIRD PARTY OTHER THAN FOR REASONS EXPRESSLY INTENDED BY DSI's SUBMITTAL TO THE ORIGINAL RECEIVER. THEY HAVE TO BE RETURNED UPON REQUEST. | | | | DYWIDAG-SYSTEMS INTERNATIONAL, USA, INC. 320 MARMON DRIVE - BOLINGBROOK, IL 60440 PHONE: 630-739-1100 FAX: 630-739-1405 | | | | | |



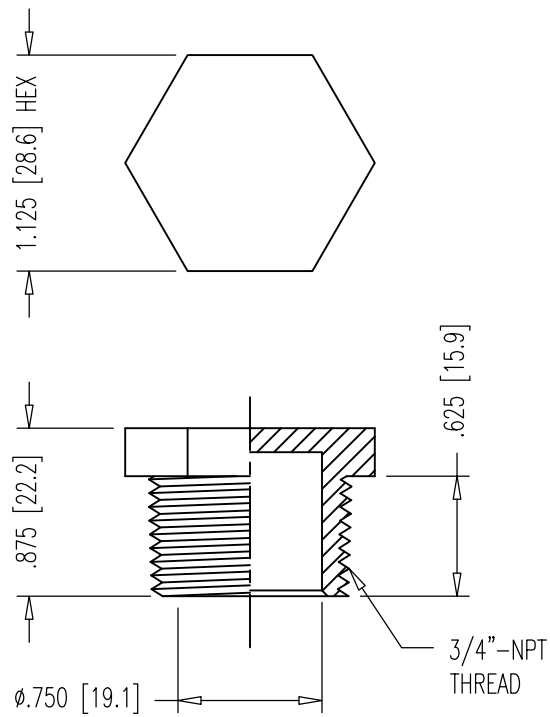
PRESSURE RATED: 150 PSI

| | | | | | | | |
|--|-----------------|-------------------------------------|-----------|--|--------------|------|-------------------------------------|
| DIMENSIONS: INCH [mm] mm FOR REFERENCE ONLY | | QUALITY PLAN NUMBER: Q000000020P | | REV. | DATE | NAME | PART NUMBER: 00 00 678 |
| 1/2" NPT PIPE NIPPLES | | | | MATERIAL: SCH 40 BLACK WELDED STEEL | SCALE 1:1 | | DRAWING NUMBER: 00 00 678 |
| | | | | | | | |
| DATE: 01-29-19 | DWG: G. MALECKI | CHK: S.I. | APP: S.I. | DYWIDAG-SYSTEMS INTERNATIONAL, USA, INC. 320 MARMON DRIVE - BOLINGBROOK, IL 60440 PHONE: 630-739-1100 FAX: 630-739-1405 | | | |
| THIS DRAWING, THE PERTINENT ENCLOSURES, DESCRIPTIONS, CALCULATIONS ETC. AND THEIR CONTENTS ARE THE PROPERTY OF DYWIDAG SYSTEMS INTERNATIONAL, USA, INC. THEY ARE NOT ALLOWED TO BE DUPLICATED WITHOUT OUR PERMISSION. THEY ARE ALSO NOT TO BE SHOWN OR EXPLAINED FOR ANY REASON TO A THIRD PARTY OTHER THAN FOR REASONS EXPRESSLY INTENDED BY DSI's SUBMITTAL TO THE ORIGINAL RECEIVER. THEY HAVE TO BE RETURNED UPON REQUEST. | | | | DYWIDAG  | | | |



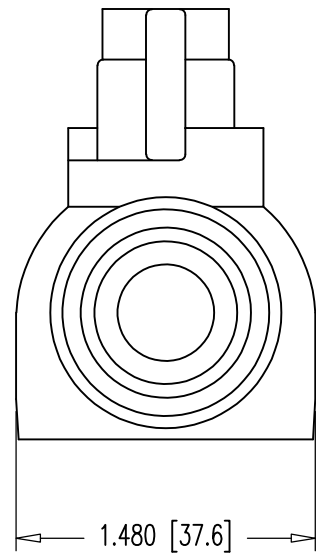
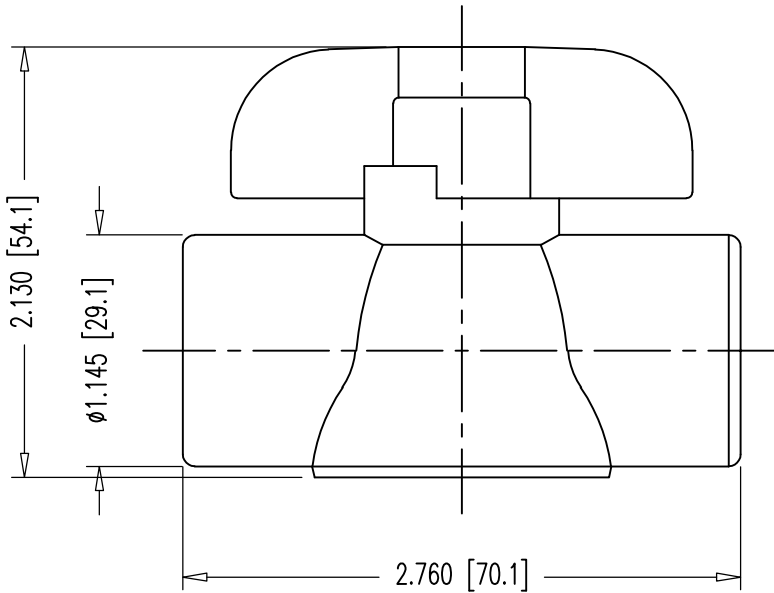
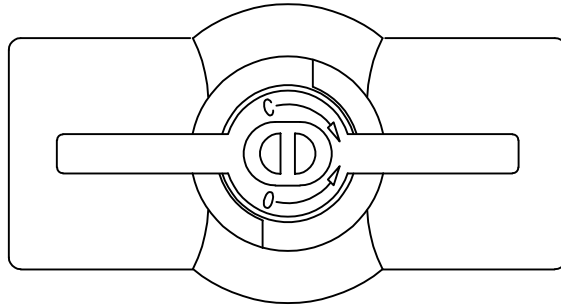
PRESSURE RATED: 150 PSI

| | | | | | | | | |
|--|------------------------------------|--|--------------|---|------|------|------|-------------------------------------|
| DIMENSIONS: INCH [mm] mm FOR REFERENCE ONLY | QUALITY PLAN NUMBER: Q00000020P | | | REV. | DATE | NAME | ECRN | PART NUMBER: 00 00 878 |
| 3/4" NPT PIPE NIPPLES | | MATERIAL: SCH 40 BLACK WELDED STEEL | SCALE 1:1 | | | | | DRAWING NUMBER: 00 00 878 |
| DATE: 01-29-19 | DWG: G. MALECKI | CHK: S.I. | APP: S.I. | | | | | |
| THIS DRAWING, THE PERTINENT ENCLOSURES, DESCRIPTIONS, CALCULATIONS ETC. AND THEIR CONTENTS ARE THE PROPERTY OF DYWIDAG SYSTEMS INTERNATIONAL, USA, INC. THEY ARE NOT ALLOWED TO BE DUPLICATED WITHOUT OUR PERMISSION. THEY ARE ALSO NOT TO BE SHOWN OR EXPLAINED FOR ANY REASON TO A THIRD PARTY OTHER THAN FOR REASONS EXPRESSLY INTENDED BY DSI's SUBMITTAL TO THE ORIGINAL RECEIVER. THEY HAVE TO BE RETURNED UPON REQUEST. | | | | DYWIDAG-SYSTEMS INTERNATIONAL, USA, INC. 320 MARMON DRIVE - BOLINGBROOK, IL 60440 PHONE: 630-739-1100 FAX: 630-739-1405 | | | | |



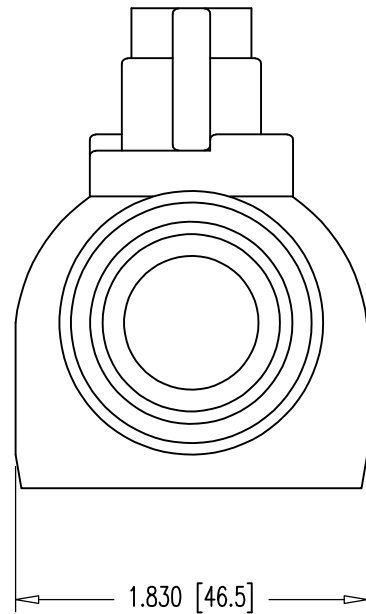
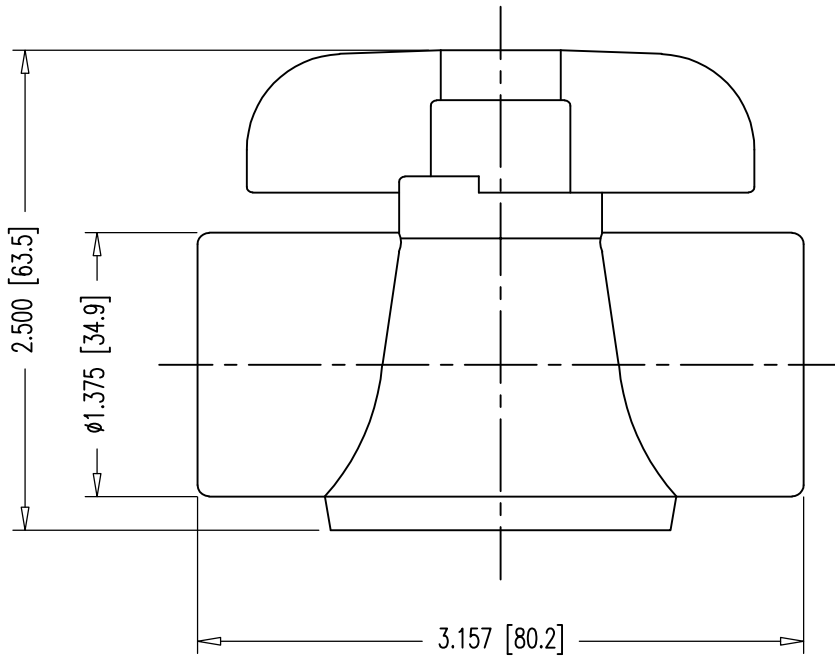
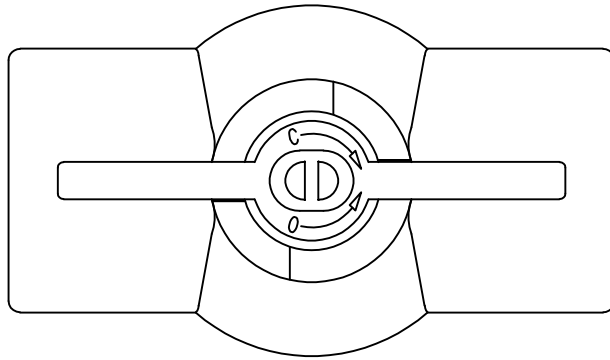
PRESSURE RATED: 150 PSI

| | | | | | | | | |
|--|--|----------------------|--|------------------------|-----------------|-----------|------------|--|
| DIMENSIONS: INCH [mm] mm FOR REFERENCE ONLY | | QUALITY PLAN NUMBER: | | WEIGHT .009 LBS. | REV. | DATE | NAME | PART NUMBER: 00 00 849 |
| 3/4" NPT NYLON PLUG | | | | | | | | |
| | | | | DATE: 03-12-19 | DWG: G. MALECKI | CHK: S.I. | APP: S.I.. | DYWIDAG-SYSTEMS INTERNATIONAL, USA, INC. 320 MARMON DRIVE - BOLINGBROOK, IL 60440 PHONE: 630-739-1100 FAX: 630-739-1405 |
| THIS DRAWING, THE PERTINENT ENCLOSURES, DESCRIPTIONS, CALCULATIONS ETC. AND THEIR CONTENTS ARE THE PROPERTY OF DYWIDAG SYSTEMS INTERNATIONAL, USA, INC. THEY ARE NOT ALLOWED TO BE DUPLICATED WITHOUT OUR PERMISSION. THEY ARE ALSO NOT TO BE SHOWN OR EXPLAINED FOR ANY REASON TO A THIRD PARTY OTHER THAN FOR REASONS EXPRESSLY INTENDED BY DSI's SUBMITTAL TO THE ORIGINAL RECEIVER. THEY HAVE TO BE RETURNED UPON REQUEST. | | | | | | | | |



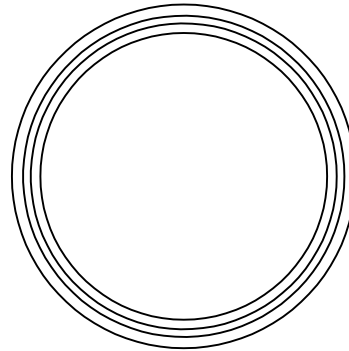
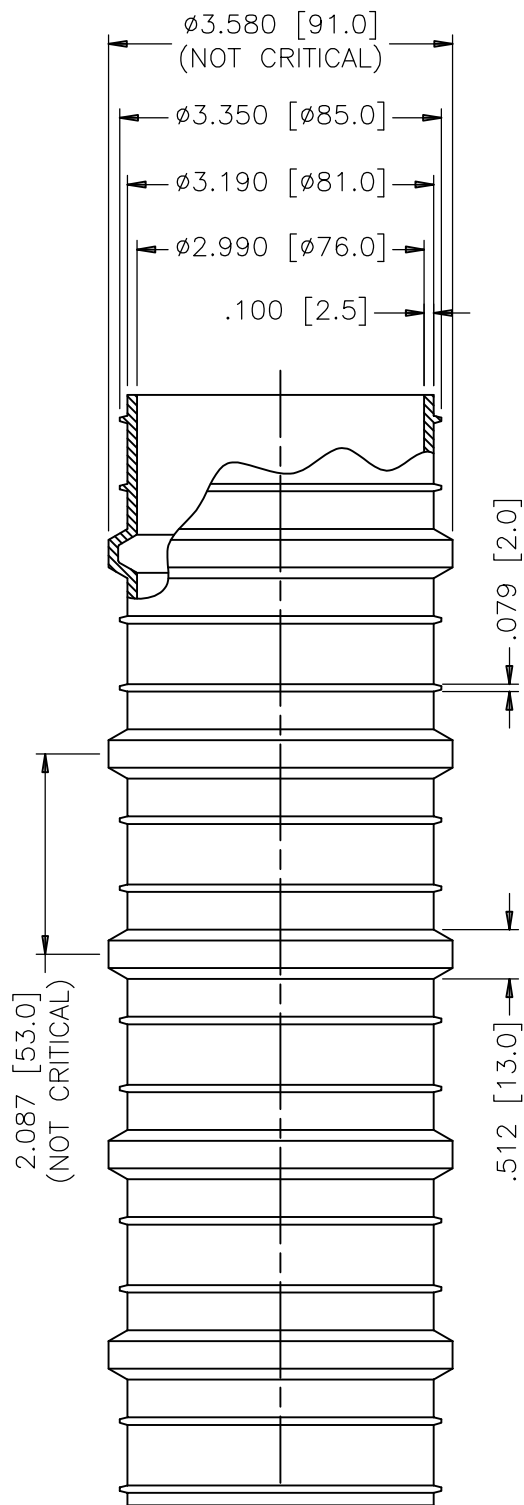
NOTE:
 PRESSURE RATED: 150 PSI.

| | | | | | | | | |
|---|-----------------|----------------------|-----------|--|--------------|----------|----------------|----------------------------------|
| DIMENSIONS: INCH [mm] mm FOR REFERENCE ONLY | | QUALITY PLAN NUMBER: | | WEIGHT 0.138 LBS. | REV. | DATE | NAME | PART NUMBER: 00 00 634 |
| 1/2" NPT BALL VALVE | | | | | 1 | 01-11-19 | S.I. | |
| | | | | MATERIAL: PVC | SCALE 1:1 | | | |
| DATE: 04-30-07 | DWG: G. MALECKI | CHK: S.N. | APP: E.A. | | | | | |
| THIS DRAWING, THE PERTINENT ENCLOSURES, DESCRIPTIONS, CALCULATIONS ETC. AND THEIR CONTENTS ARE THE PROPERTY OF DYWIDAG SYSTEMS INTERNATIONAL, USA, INC. THEY ARE NOT ALLOWED TO BE DUPLICATED WITHOUT OUR PERMISSION. THEY ARE ALSO NOT TO BE SHOWN OR EXPLAINED FOR ANY REASON TO A THIRD PARTY OTHER THAN FOR REASONS EXPRESSLY INTENDED BY DSI'S SUBMITTAL TO THE ORIGINAL RECEIVER. THEY HAVE TO BE RETURNED UPON REQUEST. | | | | DYWIDAG-SYSTEMS INTERNATIONAL, USA, INC. 320 MARMON DRIVE - BOLINGBROOK, IL 60440 PHONE: 630-739-1100 FAX: 630-739-1405 | | | DYWIDAG | |



▲ NOTE:
PRESSURE RATED: 150 PSI.

| | | | | | | | | |
|--|--|----------------------|--|---|------------------|-----------|-----------|----------------------------------|
| DIMENSIONS: INCH [mm] mm FOR REFERENCE ONLY | | QUALITY PLAN NUMBER: | | WEIGHT 0.213 LBS. | REV. | DATE | NAME | PART NUMBER: 00 00 834 |
| 3/4" NPT BALL VALVE | | | | | MATERIAL: PVC | 1 | 01-11-19 | |
| | | | | DATE: 04-30-07 | DWG: G. MALECKI | CHK: S.N. | APP: E.A. | SCALE 1:1 |
| THIS DRAWING, THE PERTINENT ENCLOSURES, DESCRIPTIONS, CALCULATIONS ETC. AND THEIR CONTENTS ARE THE PROPERTY OF DYWIDAG SYSTEMS INTERNATIONAL, USA, INC. THEY ARE NOT ALLOWED TO BE DUPLICATED WITHOUT OUR PERMISSION. THEY ARE ALSO NOT TO BE SHOWN OR EXPLAINED FOR ANY REASON TO A THIRD PARTY OTHER THAN FOR REASONS EXPRESSLY INTENDED BY DSI's SUBMITTAL TO THE ORIGINAL RECEIVER. THEY HAVE TO BE RETURNED UPON REQUEST. | | | | DYWIDAG-SYSTEMS INTERNATIONAL, USA, INC. 320 MARMON DRIVE - BOLINGBROOK, IL 60440 PHONE: 630-739-1100 FAX: 630-739-1405 | | | | |



△ MATERIAL: POLYPROPYLENE
 CELL CLASS RANGE: PP0340B44541 TO PP0340B67884
 MATERIAL MEETS FDOT SPECS. 960-2.4.3.

NOTES:

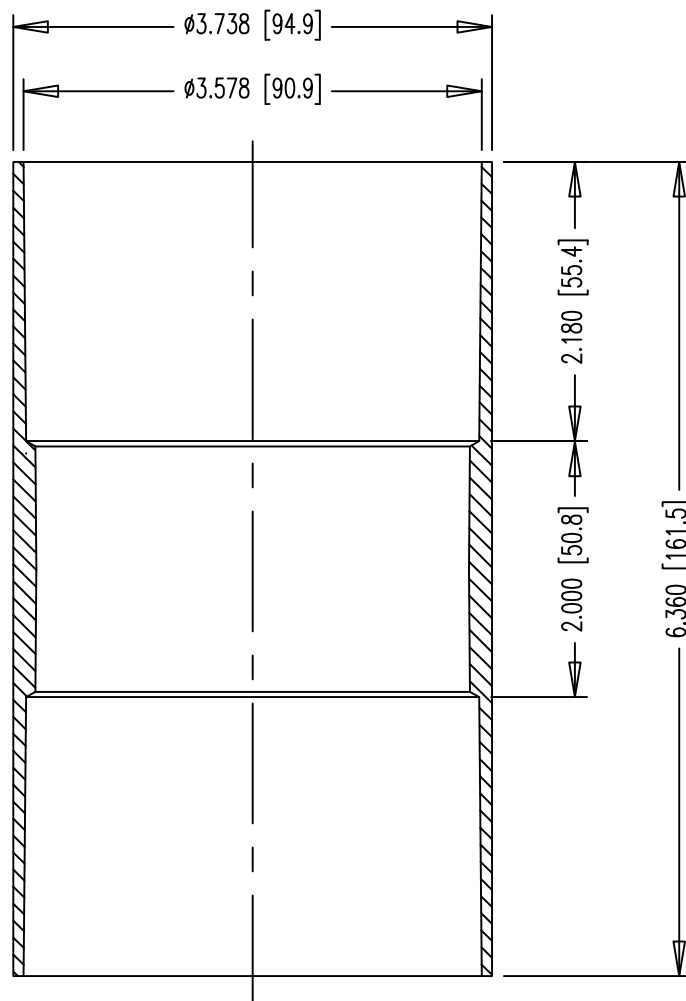
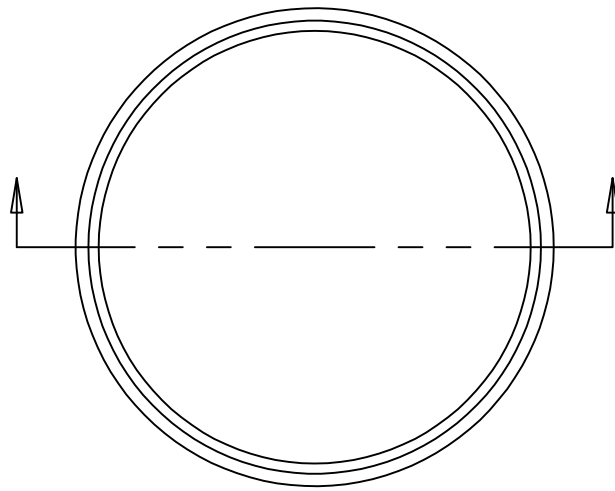
- △ 1. STANDARD FIT FOR 9-0.6" & 12-0.5" STRANDS AND 1-3/4" THREADBAR.
 2. Min. BENDING RADIUS, $R_{min} = 20.5$ FT.
 3. DUCT IS DELIVERED IN STRAIGHT SECTIONS AND IS NOT INTENDED TO BE COILED.

| | | | | | | | | | | |
|--|-----------------|-------------------------------------|-----------|---------------------------------------|------------------------|-----------|------------------|--------------|------|------------------------------|
| DIMENSIONS: INCH [mm] mm FOR REFERENCE ONLY | | QUALITY PLAN NUMBER: QU00041110P | | TOLERANCES: ±.010 UNLESS NOTED | WEIGHT 0.32 LBS. | REV. 1 | DATE 01-11-19 | NAME S.I. | ECRN | PART NUMBER: U00220300 |
| 3" (76mm) CORRUGATED PP DUCT | | | | MATERIAL: POLYPROPYLENE OR HDPE | SCALE 1:2 | | | | | DRAWING NUMBER: U00220300 |
| DATE: 04-23-96 | DWG: G. MALECKI | CHK: A.G. | APP: K.S. | | | | | | | |

THIS DRAWING, THE PERTINENT ENCLOSURES, DESCRIPTIONS, CALCULATIONS ETC. AND THEIR CONTENTS ARE THE PROPERTY OF DYWIDAG SYSTEMS INTERNATIONAL, USA, INC. THEY ARE NOT ALLOWED TO BE DUPLICATED WITHOUT OUR PERMISSION. THEY ARE ALSO NOT TO BE SHOWN OR EXPLAINED FOR ANY REASON TO A THIRD PARTY OTHER THAN FOR REASONS EXPRESSLY INTENDED BY DSI'S SUBMITTAL TO THE ORIGINAL RECEIVER. THEY HAVE TO BE RETURNED UPON REQUEST.

DYWIDAG-SYSTEMS INTERNATIONAL, USA, INC.
 POST TENSIONING / REINFORCING UNIT PHONE: 630-739-1100
 320 MARMON DRIVE - BOLINGBROOK, IL FAX: 630-739-1405





▲ MATERIAL: POLYPROPYLENE
 CELL CLASS RANGE: PP0340B44541 TO PP0340B67884
 MATERIAL MEETS FDOT SPECS. 960-2.4.3.

| | | | | | | | | | | | |
|--|--|-------------------------------------|--|--------------------------------------|--|-------------------------|--|-----------------------------------|--|-------------------------------------|--|
| DIMENSIONS: INCH [mm] mm FOR REFERENCE ONLY | | QUALITY PLAN NUMBER: QSA0028000P | | TOLERANCES: ±.005 UNLESS NOTED | | WEIGHT 0.325 LBS. | | REV. DATE NAME 1 01-11-19 S.I. | | PART NUMBER: U00220305 | |
| Ø3" (76mm) DUCT COUPLER | | | | MATERIAL: SEE ABOVE | | SCALE 2:3 | | | | DRAWING NUMBER: U00220305 | |
| | | | | DATE: 10-25-99 | | DWG: G. MALECKI | | CHK: | | APP: | |
| THIS DRAWING, THE PERTINENT ENCLOSURES, DESCRIPTIONS, CALCULATIONS ETC. AND THEIR CONTENTS ARE THE PROPERTY OF DYWIDAG SYSTEMS INTERNATIONAL, USA, INC. THEY ARE NOT ALLOWED TO BE DUPLICATED WITHOUT OUR PERMISSION. THEY ARE ALSO NOT TO BE SHOWN OR EXPLAINED FOR ANY REASON TO A THIRD PARTY OTHER THAN FOR REASONS EXPRESSLY INTENDED BY DSI'S SUBMITTAL TO THE ORIGINAL RECEIVER. THEY HAVE TO BE RETURNED UPON REQUEST. | | | | | | | | | | | |
| DYWIDAG-SYSTEMS INTERNATIONAL, USA, INC. POST TENSIONING / REINFORCING UNIT PHONE: 630-739-1100 320 MARMON DRIVE - BOLINGBROOK, IL FAX: 630-739-1405 | | | | | | | | | | | |



| | | | | | | | | | | |
|---------------------------------------|---|---|---|---|-----|---|-----|---|----|--|
| DIMENSIONS & ORDERING INFO | P | L | A | - | XXX | - | YYY | - | ZZ | STANDARD ORDERING OPTIONS |
| | | | | | | | | | | YE - YELLOW, BK - BLACK |
| | | | | | | | | | | 300mm, 450mm, 600mm, 900mm (12", 18", 24", 36") |
| | | | | | | | | | | 63mm -315mm (2-1/2" - 12") |
| | | | | | | | | | | A - 0.75 mm (30 mils) |
| | | | | | | | | | | L - 0.80 mm (31 mils) |
| | | | | | | | | | | P - Tubular |

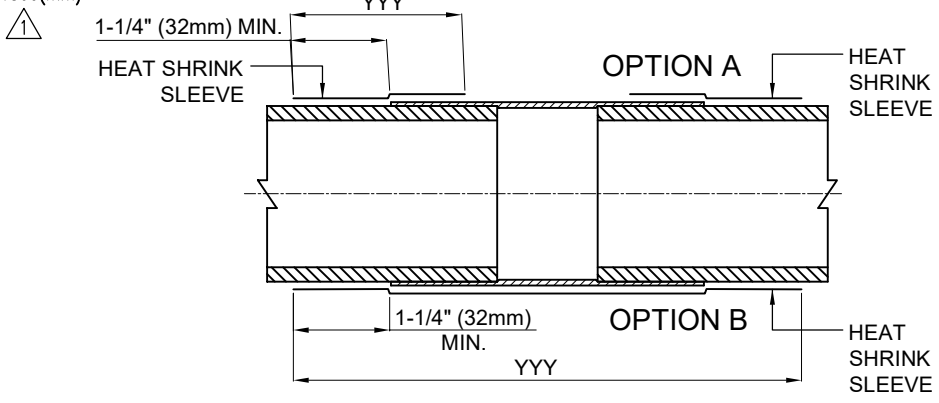
| TUBULAR SLEEVE | TUBULAR SLEEVE DIAMETER AS SUPPLIED FULLY RECOVERED | |
|---------------------|---|--------------|
| PLA 63-YYY YE | 3.5" [90mm] | 2.5" [63mm] |
| PLA 90-YYY YE | 4.8" [120mm] | 3.3" [81mm] |
| PLA 115-YYY BK | 5.5" [145mm] | 3.8" [98mm] |
| PLA 125-YYY YE | 6.3" [160mm] | 4.3" [110mm] |
| PLA 160-YYY BK | 7.5" [190mm] | 5.2" [130mm] |
| ⚠ PMA 90/30-YYY BK | 3.5" [90mm] | 1.2" [30mm] |
| ⚠ PMA 120/40-YYY BK | 4.7" [120mm] | 1.6" [40mm] |

YYY = SLEEVE WIDTH: 300/450/600/900/1500(mm)
 COLOR: YE = YELLOW; BK = BLACK

PMA - HIGH SHRINK SLEEVE.
 HIGH SHRINK TUBULAR BACKING.

MATERIAL:
 ACCORDING TO FDOT SPECIFICATION
 POST TENSIONING, SECTION 462 - 4, 2, 6, 3.

- NOTES:**
- ORDER DIRECT FROM CANUSA
 TEL. 281 367 - 8866
 FAX. 281 367 - 4304
 - SELECT ORDER LENGTH AS A MULTIPLE OF THE ACTUAL LENGTH.
 - OTHER COLORS SLEEVE MAY BE AVAILABLE UPON REQUEST.
 - ALWAYS HEAT THE DUCT ENDS FIRST.



NOTE:
 FOLLOW MANUFACTURER'S
 INSTALLATION INSTRUCTIONS.

| | DUCT SIZE ⚠ | STRAND SYSTEM | BAR SYSTEM | HEAT SHRINK SLEEVE SIZE | PART NUMBER |
|-----------------|-----------------------|---------------|--------------------|-------------------------|-------------|
| CORRUGATED DUCT | 1" x 3" (25mm x 76mm) | 4-0.6" | | PLA-63-450 YE | U00044063 |
| | 2-3/8" (59mm) | 7-0.6" | | PLA-63-450 YE | U00044063 |
| | | | 1", 1-1/4", 1-3/8" | PMA-90/30-450 BK ⚠ | U00044030 |
| | 3" (76mm) | | 1 3/4" | ⚠ PMA-120/40-450 BK | ⚠ U00044040 |
| | 3-3/8" (85mm) | 12-0.6" | | PLA-90-450 YE | U00044090 |
| | 4" (100mm) | | 2-1/2" | PLA-90-450 YE | U00044090 |
| | 4" (100mm) | 19-0.6" | | PLA-115-450 BK | U00044115 |
| | 4-1/2" (115mm) | 27-0.6" | | PLA-125-450 YE | U00044125 |
| 5-1/8" (130mm) | 31-0.6", 37-0.6" | | PLA-160-450 BK | U00044160 | |
| ⚠ SMOOTH DUCT | 3" SDR 17 HDPE PIPE | | 1-3/8" | PLA-63-450 YE | U00044063 |

| | | | | | | | | | |
|---|-----------------|-----------|-----------|---|---------------|-----------|------|---|--|
| DIMENSIONS: INCH [mm] mm FOR REFERENCE ONLY | | | | REV. ⚠ | DATE 05-28-20 | NAME S.I. | ECRN | PART NUMBERS: SEE TABLE ABOVE | |
| HEAT SHRINK SLEEVE SIZES FOR INTERNAL GROUTED APPLICATIONS | | | | SCALE | | | | DRAWING NUMBER: U00044000 | |
| | | | | NTS | | | | | |
| DATE: 07-31-19 | DWG: G. Malecki | CHK: S.I. | APP: S.I. | DYWIDAG-SYSTEMS INTERNATIONAL, USA, INC. 320 MARMON DRIVE - BOLINGBROOK, IL 60440 PHONE: 630-739-1100 FAX: 630-739-1405 | | | | | |
| <small>THIS DRAWING, THE PERTINENT ENCLOSURES, DESCRIPTIONS, CALCULATIONS ETC. AND THEIR CONTENTS ARE THE PROPERTY OF DYWIDAG SYSTEMS INTERNATIONAL, USA, INC. THEY ARE NOT ALLOWED TO BE DUPLICATED WITHOUT OUR PERMISSION. THEY ARE ALSO NOT TO BE SHOWN OR EXPLAINED FOR ANY REASON TO A THIRD PARTY OTHER THAN FOR REASONS EXPRESSLY INTENDED BY DSI'S SUBMITTAL TO THE ORIGINAL RECEIVER. THEY HAVE TO BE RETURNED UPON REQUEST.</small> | | | | | | | | | |

