

CAP END VIEW

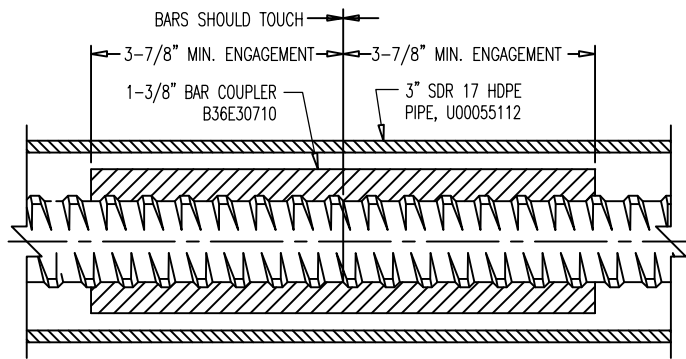
CAUTION: WHEN PRESSURIZING GROUT CAPS, DO NOT STAND BEHIND CAPS!

WARNING: READ AND COMPLY WITH ALL APPLICABLE SAFETY AND OPERATING INSTRUCTIONS AND WARNINGS FOR THREADBAR STRESSING BEFORE STARTING ANY WORK OR OPERATION.

BLOCKOUT DETAIL

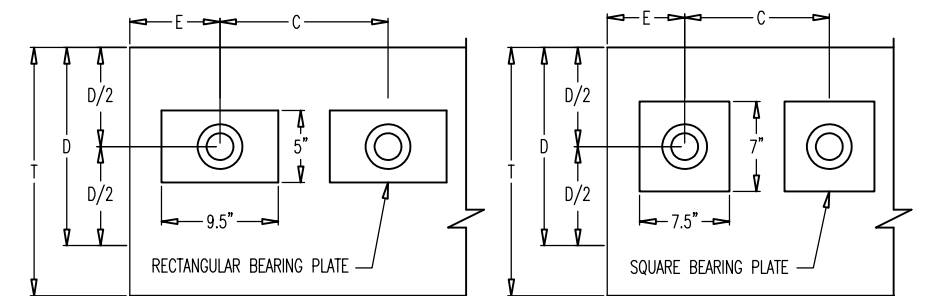
*B36E22410 HAS GROUT PORT ALIGNED WITH THE 9.5" DIRECTION; B36E22420 HAS GROUT PORT ALIGNED WITH THE 5" DIRECTION.

CAUTION: WHEN USING HIGH STRENGTH DYWIDAG THREADBAR (GRADE 150) DO NOT WELD TO BAR. DO NOT USE BAR AS GROUND CONNECTION FOR WELDING. DO NOT ALLOW HOT SLAG OR SPARKS TO TOUCH BAR. DO NOT DAMAGE BAR SURFACE. DO NOT USE BARS WITH KINKS OR SHARP BENDS. FAILURE TO HEED THIS WARNING COULD CAUSE BAR TO BREAK RESULTING IN INJURY OR DAMAGE



BAR COUPLING

*B36E22410 HAS GROUT PORT ALIGNED WITH THE 9.5" DIRECTION; B36E22420 HAS GROUT PORT ALIGNED WITH THE 5" DIRECTION.



SURFACE MOUNT DETAIL

MATERIAL LIST		
PART NO.	DESCRIPTION	MATERIAL SPECIFICATION
B36E CUT	1-3/8" (36mm) THREADBAR	ASTM A722 TYPE II STEEL
B36E22410 OR B36E22420 OR B36E22910	5"x9.5"x2" RECT. OR 7.5"x7"x1.75" SQUARE BEARING PLATE WITH 2-7/8" OD x 3/16" WALL, 5-1/2" LONG MECHANICAL TUBING AND BOLT HOLES, GALV.	STEEL PLATE: ASTM A36, MECHANICAL TUBE: ASTM A512, A513 OR A519, ASSEMBLY GALVANIZED
B36E50700	NYLON BAR GROUT CAP WITH O-RING	CAP: NYLON 6, 20% GLASS FIBER FILLED; O-RING: EPDM
00 00 783 00 00 774	(4) 3/8"-16UNC HEX BOLTS, 3-1/4" LONG 3/8" NARROW WASHERS	316L STAINLESS STEEL
B36E24210	1-3/8" GROUTABLE ANCHOR NUT	FORGING, NORMALIZED C1045
B36E30710	1-3/8" BAR COUPLER	C1026 CD SEAMLESS MECH. TUBE ASTM A519
00 00 649	1/2" NPT PLUG	NYLON 6, WHITE
00 00 678	1/2" NPT NIPPLE, LENGTH AS REQ'D (TEMPORARY)	SCH 40 BLACK WELDED STEEL
00 00 878	3/4" NPT NIPPLE, LENGTH AS REQ'D (TEMPORARY)	SCH 40 BLACK WELDED STEEL
00 00 849	3/4" NPT PLUG	NYLON 6, WHITE
00 00 634	1/2" NPT BALL VALVE (TEMPORARY)	PVC
00 00 834	3/4" NPT BALL VALVE (TEMPORARY)	PVC
U00055112	3" SDR 17 HDPE PIPE, OD = 3.5"; WALL = 0.206"	HDPE
68 12 233	ELECTROFUSION COUPLER	COMPOSITE
U00044063	HEAT SHRINK SLEEVE, PLA-63-450-YE, 17.7" WIDE	ACCORD. TO FDOT SPEC. P.T. SEC. 960-2.2.1.8
ANS	TEFLON TAPE OR PASTE	-
ANS	SIKADUR 32 HIGH-MOD	HIGH-MODULUS, HIGH-STRENGTH, EPOXY ADHESIVE PER FDOT APL

- NOTES:**
1. USERS SHALL REFER TO FDOT STANDARD SPECIFICATIONS AND PROJECT SPECIFIC CRITERIA FOR TENDON INSTALLATION, STRESSING, & GROUTING.
 2. REQUIRED REINFORCING BARS ARE NOT SHOWN ON THIS DRAWING.
 3. MAXIMUM ANGULAR MISALIGNMENT WHEN USING ANCHOR NUT: ±2°.
 4. CENTER TO CENTER, END AND EDGE DISTANCE DEPENDS ON THE LOCATION OF THE BAR AND CONCRETE STRENGTH, (SEE TABLE).
 5. C/C DISTANCE = 2 X END DISTANCE - 2 X CONCRETE COVER (2" ASSUMED). TIGHTER C/C DISTANCE SHOULD BE EVALUATED.
 6. DUCT IS DELIVERED IN STRAIGHT SECTIONS AND IS NOT INTENDED TO BE COILED.
 7. BURSTING REINFORCEMENT IS NOT SHOWN AND WILL BE INCLUDED WITH THE SHOP DRAWINGS.
 8. THREADBAR TENDONS ARE STRESSED FROM ONE END ONLY.

Plate Type	fci, ksi	Depth, D (in)	Minimum distances, in	
			End dist, E	c/c dist, C
Square	5.5	11.0	5.89	7.78
	5.0	12.0	6.41	8.83
	4.5	13.0	6.98	9.95
	4.0	15.0	8.03	12.05
Rectangular	5.0	9.0	8.55	13.10
	4.5	10.0	9.50	15.00
	4.0	12.0	11.40	18.80

Plate Type	Part No.	Width, in.	Length, in.	Thickness, in.
Square	B36E22910	7	7.5	1.75
Rectangular	B36E22410	5	9.5	2

LEGEND:
E=END DISTANCE
C=CENTER TO CENTER DISTANCE
D/2=EDGE DISTANCE

DIMENSIONS: INCH

EXTERNAL GROUTED SYSTEM FOR 1-3/8" (36mm) THREADBAR ASSEMBLY

DATE: 05/28/20 DWG: G. MALECKI CHK: S.I. APP: S.I.

THIS DRAWING, THE PERTINENT ENCLOSURES, DESCRIPTIONS, CALCULATIONS ETC. AND THEIR CONTENTS ARE THE PROPERTY OF DYWIDAG SYSTEMS INTERNATIONAL, USA, INC. THEY ARE NOT ALLOWED TO BE DUPLICATED WITHOUT OUR PERMISSION. THEY ARE ALSO NOT TO BE SHOWN OR EXPLAINED FOR ANY REASON TO A THIRD PARTY OTHER THAN FOR REASONS EXPRESSLY INTENDED BY DSI'S SUBMITTAL TO THE ORIGINAL RECEIVER. THEY HAVE TO BE RETURNED UPON REQUEST.

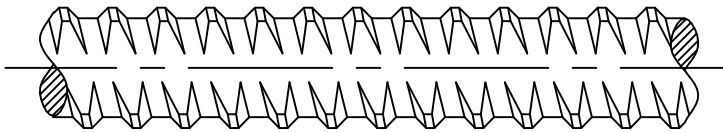
REV.	DATE	NAME	

SCALE: 3:10

DYWIDAG-SYSTEMS INTERNATIONAL, USA, INC.
POST TENSIONING / REINFORCING UNIT PHONE: 630-739-1100
320 MARMON DRIVE - BOLINGBROOK, IL FAX: 630-739-1405

DYWIDAG

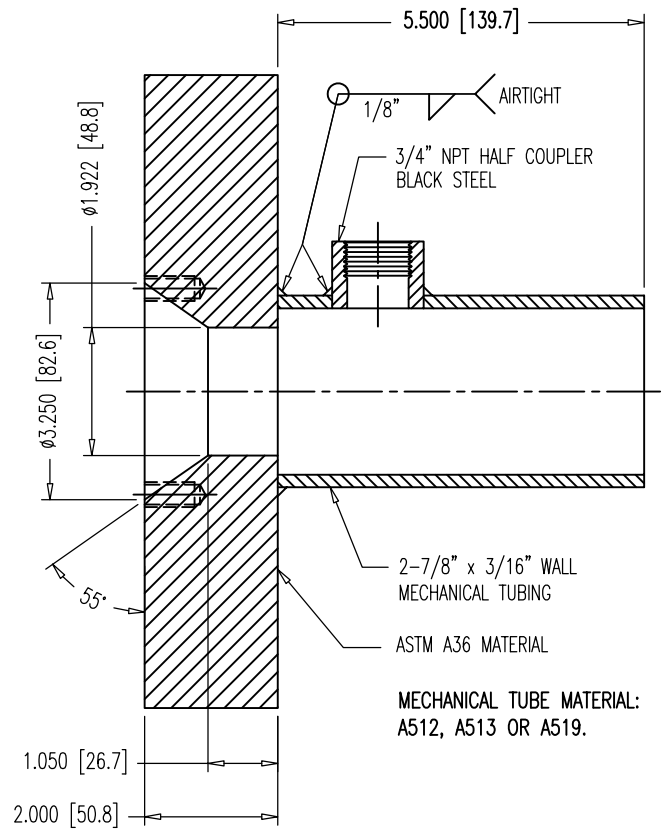
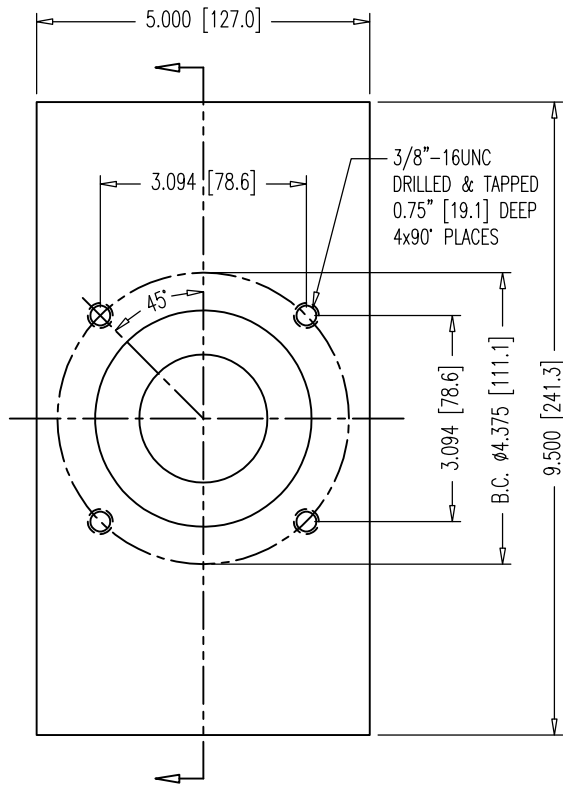
RIGHT HAND THREAD



	<u>PART NUMBERS</u>	<u>SPECIFICATIONS</u>
FOR BARE BAR:	B36E CUT	ASTM A722 TYPE II

<u>PHYSICAL PROPERTIES</u>	
EFFECTIVE AREA:	1.58 SQ.IN. (1019 SQ.mm)
ULTIMATE STRENGTH:	150 KSI (1034 N/SQ.mm)
ULTIMATE LOAD:	237 KIPS (1054 KN)
YIELD LOAD:	191.2 KIPS (851 KN)
WEIGHT:	5.56 LBS./FT. (8.27 Kg/m)
MAX. BAR ϕ INCL. RIBS:	1.63 IN. (41.4mm)
AVERAGE CORE ϕ :	1.40 IN. (35.6mm)
PITCH:	0.709 IN. (18.0mm)

DYWIDAG POST-TENSIONING SYSTEMS				DIMENSIONS: INCH [mm] mm FOR REFERENCE ONLY		Q.A.		QUALITY PLAN NUMBER: QB00000050B			DRAWING NUMBER B36E CUT	
1-3/8" ϕ THREADBAR GRADE 150 KSI								REV.	DATE	NAME		
DATE: 12-23-91 DWG: G. MALECKI CHK: H.K. APP: K.S.				MATERIAL: SEE ABOVE		SCALE NTS						
This drawing, the pertinent enclosures, descriptions, calculations etc. and their contents are the property of DYWIDAG SYSTEMS INTERNATIONAL, USA, INC. They are not allowed to be duplicated with-out our permission. They are also not to be shown or explained for any reason to a third party other than for reasons expressly intended by the original receiver. They have to be returned on request.												
DYWIDAG-SYSTEMS INTERNATIONAL, USA, INC.												



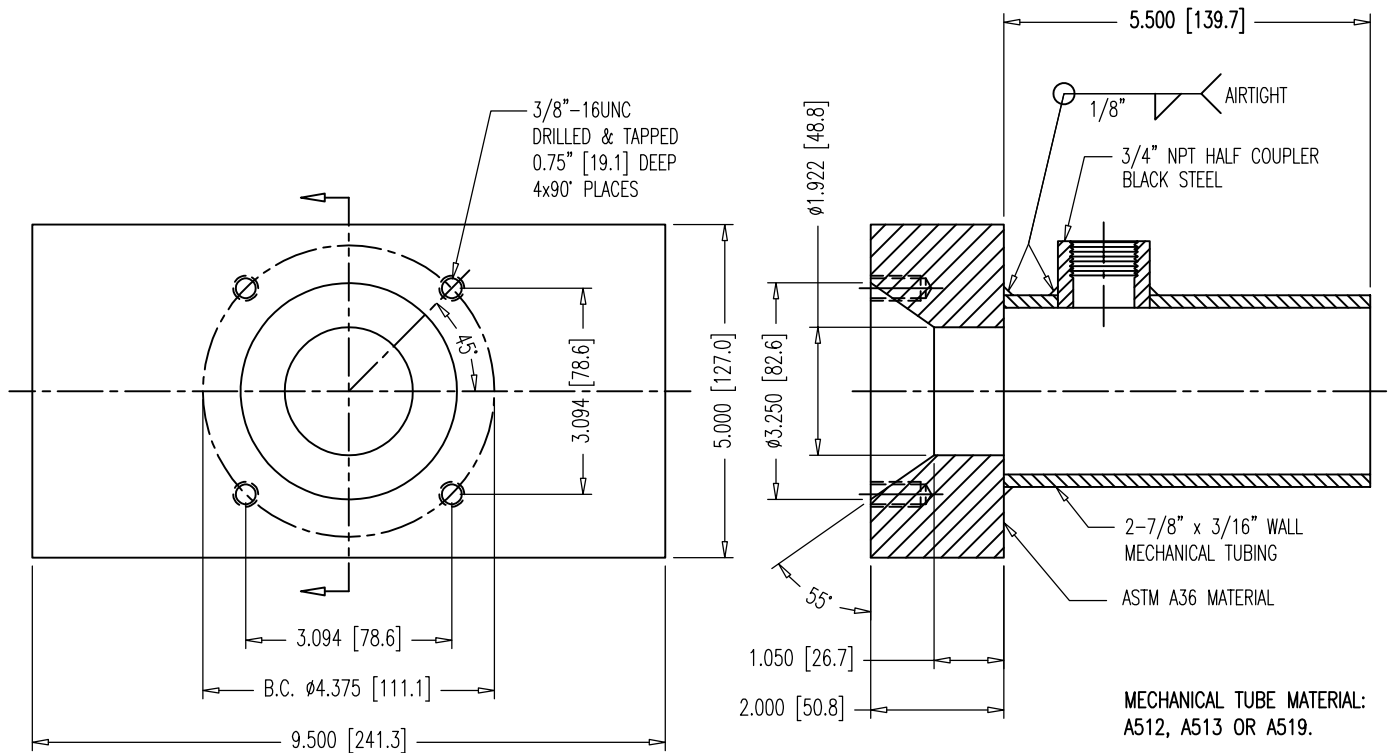
NOTES:

1. PLATE & PIPE GALVANIZED ACCORDING TO ASTM A123 AFTER WELDING.
2. DIMENSIONS AND TOLERANCES APPLY TO UNCOATED PLATES.
3. ENSURE THREADABILITY OF TAPPED HOLES IN COATED PLATES.
4. 3" SDR 17 HDPE PIPE U00055112 FITS OVER TUBING.

DIMENSIONS: INCH [mm] mm FOR REFERENCE ONLY		QUALITY PLAN NUMBER:		TOLERANCES: ±.020 UNLESS NOTED	WEIGHT 27.0 LBS.	REV.	DATE	NAME	PART NUMBER: B36E22410
RECTANGULAR BEARING PLATE WITH EXIT PIPE FOR 1-3/8" (36mm) THREADBAR TO BE USED WITH HDPE PIPE				MATERIAL: SEE ABOVE	SCALE 1:3				DRAWING NUMBER: B36E22410
DATE: 05/28/20	DWG: G. MALECKI	CHK: S.I.	APP: S.I.						

THIS DRAWING, THE PERTINENT ENCLOSURES, DESCRIPTIONS, CALCULATIONS ETC. AND THEIR CONTENTS ARE THE PROPERTY OF **DYWIDAG SYSTEMS INTERNATIONAL, USA, INC.** THEY ARE NOT ALLOWED TO BE DUPLICATED WITHOUT OUR PERMISSION. THEY ARE ALSO NOT TO BE SHOWN OR EXPLAINED FOR ANY REASON TO A THIRD PARTY OTHER THAN FOR REASONS EXPRESSLY INTENDED BY DSI'S SUBMITTAL TO THE ORIGINAL RECEIVER. THEY HAVE TO BE RETURNED UPON REQUEST.

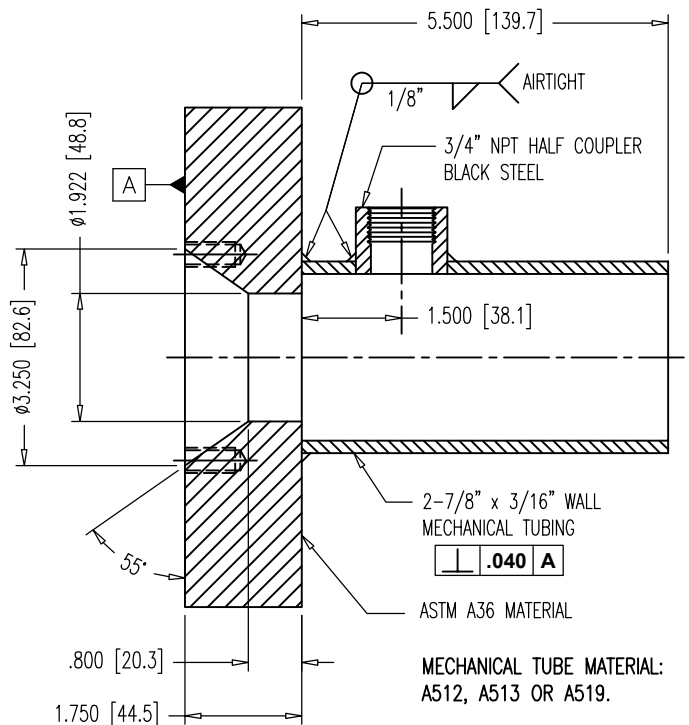
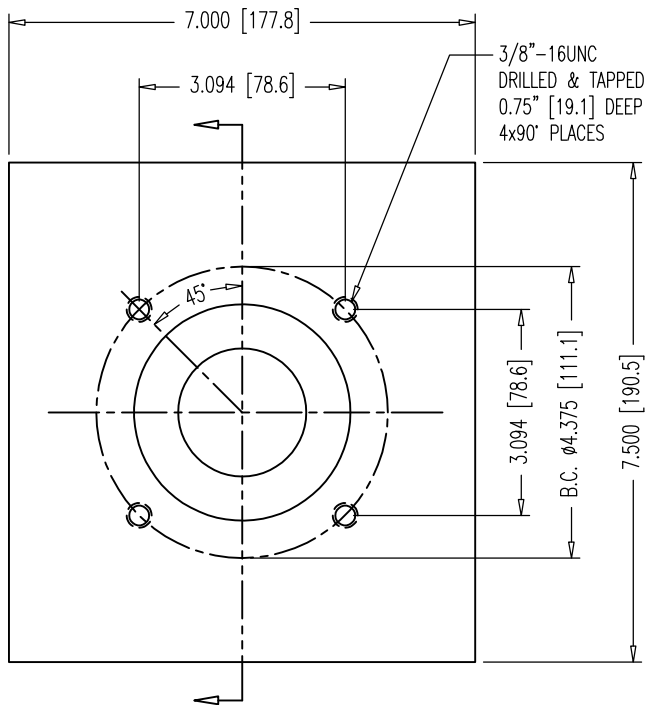
DYWIDAG-SYSTEMS INTERNATIONAL, USA, INC.
 POST TENSIONING / REINFORCING UNIT PHONE: 630-739-1100 **DYWIDAG**
 320 MARMON DRIVE - BOLINGBROOK, IL FAX: 630-739-1405



NOTES:

1. PLATE & PIPE GALVANIZED ACCORDING TO ASTM A123 AFTER WELDING.
2. DIMENSIONS AND TOLERANCES APPLY TO UNCOATED PLATES.
3. ENSURE THREADABILITY OF TAPPED HOLES IN COATED PLATES.
4. 3" SDR 17 HDPE PIPE U00055112 FITS OVER TUBING.

DIMENSIONS: INCH [mm] mm FOR REFERENCE ONLY		QUALITY PLAN NUMBER:		TOLERANCES: ±.020 UNLESS NOTED	WEIGHT 27.0 LBS.	REV.	DATE	NAME	PART NUMBER: B36E22420
RECTANGULAR BEARING PLATE WITH EXIT PIPE FOR 1-3/8" (36mm) THREADBAR TO BE USED WITH HDPE PIPE				MATERIAL: SEE ABOVE	SCALE 1:3				DRAWING NUMBER: B36E22420
DATE: 05/28/20	DWG: G. MALECKI	CHK: S.I.	APP: S.I.						
THIS DRAWING, THE PERTINENT ENCLOSURES, DESCRIPTIONS, CALCULATIONS ETC. AND THEIR CONTENTS ARE THE PROPERTY OF DYWIDAG SYSTEMS INTERNATIONAL, USA, INC. THEY ARE NOT ALLOWED TO BE DUPLICATED WITHOUT OUR PERMISSION. THEY ARE ALSO NOT TO BE SHOWN OR EXPLAINED FOR ANY REASON TO A THIRD PARTY OTHER THAN FOR REASONS EXPRESSLY INTENDED BY DSI's SUBMITTAL TO THE ORIGINAL RECEIVER. THEY HAVE TO BE RETURNED UPON REQUEST.				DYWIDAG-SYSTEMS INTERNATIONAL, USA, INC. POST TENSIONING / REINFORCING UNIT PHONE: 630-739-1100 DYWIDAG 320 MARMON DRIVE - BOLINGBROOK, IL FAX: 630-739-1405					



NOTES:

1. PLATE & PIPE GALVANIZED ACCORDING TO ASTM A123 AFTER WELDING.
2. DIMENSIONS AND TOLERANCES APPLY TO UNCOATED PLATES.
3. ENSURE THREADABILITY OF TAPPED HOLES IN COATED PLATES.
4. 3" SDR 17 HDPE PIPE U00055112 FITS OVER TUBING.

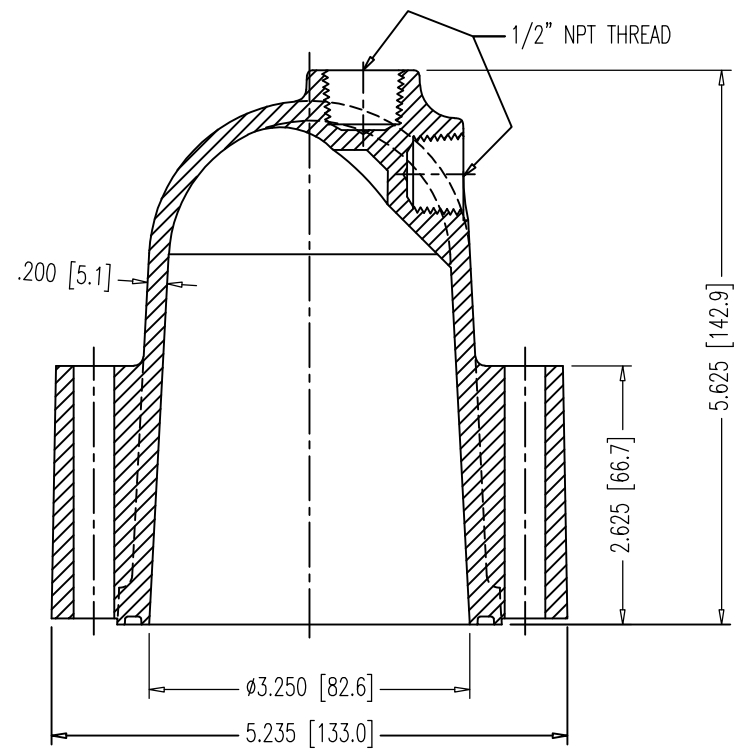
DIMENSIONS: INCH [mm] mm FOR REFERENCE ONLY		QUALITY PLAN NUMBER:		TOLERANCES: \pm .020 UNLESS NOTED		WEIGHT 28.1 LBS.		REV.		DATE		NAME		PART NUMBER: B36E22910	
SQUARE BEARING PLATE WITH EXIT PIPE FOR 1-3/8" (36mm) THREADBAR TO BE USED WITH HDPE PIPE				MATERIAL: SEE ABOVE		SCALE 1:3								DRAWING NUMBER: B36E22910	
DATE: 05/28/20	DWG: G. MALECKI	CHK: S.I.	APP: S.I.												

THIS DRAWING, THE PERTINENT ENCLOSURES, DESCRIPTIONS, CALCULATIONS ETC. AND THEIR CONTENTS ARE THE PROPERTY OF DYWIDAG SYSTEMS INTERNATIONAL, USA, INC. THEY ARE NOT ALLOWED TO BE DUPLICATED WITHOUT OUR PERMISSION. THEY ARE ALSO NOT TO BE SHOWN OR EXPLAINED FOR ANY REASON TO A THIRD PARTY OTHER THAN FOR REASONS EXPRESSLY INTENDED BY DSI'S SUBMITTAL TO THE ORIGINAL RECEIVER. THEY HAVE TO BE RETURNED UPON REQUEST.

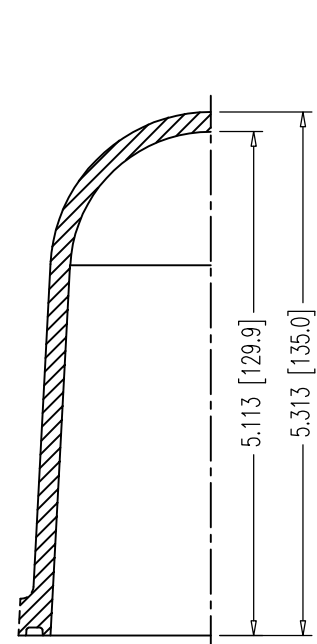
DYWIDAG-SYSTEMS INTERNATIONAL, USA, INC.

POST TENSIONING / REINFORCING UNIT PHONE: 630-739-1100
320 MARMON DRIVE - BOLINGBROOK, IL FAX: 630-739-1405

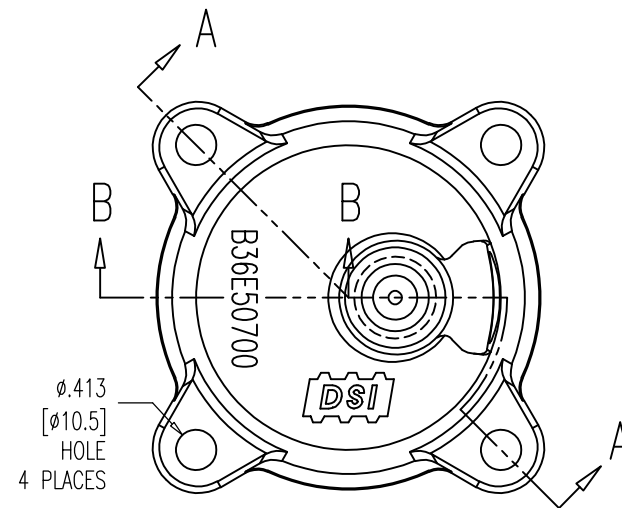




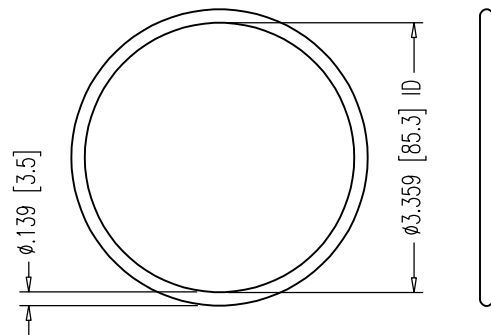
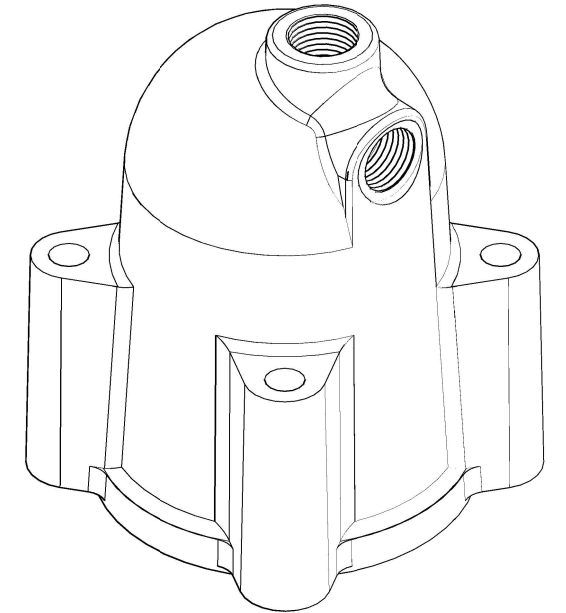
SECTION A-A



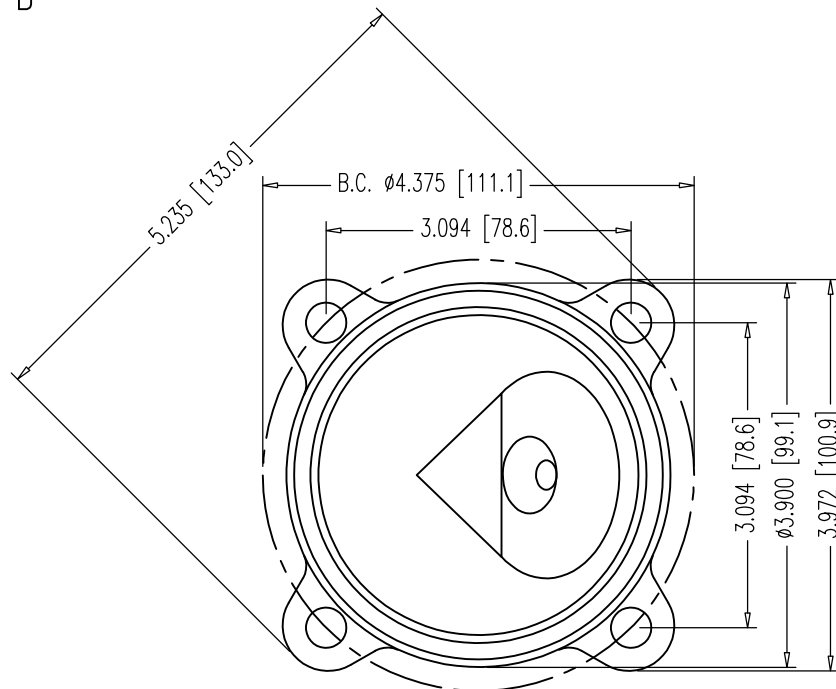
SECTION B-B



TOP VIEW



△ O-RING MATERIAL:
 EPDM MEETING FDOT
 SPECIFICATIONS 960-2.2.1.7.
 △ #237 O-RING
 3-3/8" x 3-5/8" x 1/8"
 SCALE: NTS



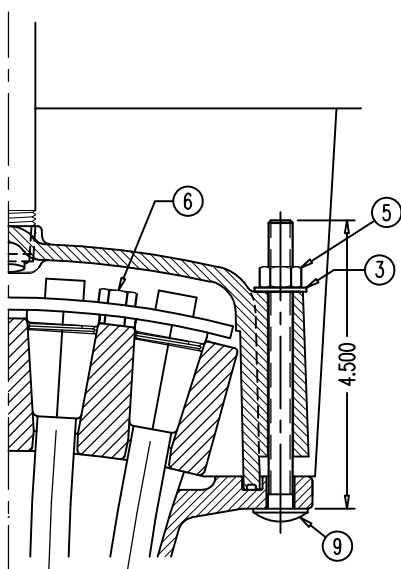
BOTTOM VIEW

NOTES:

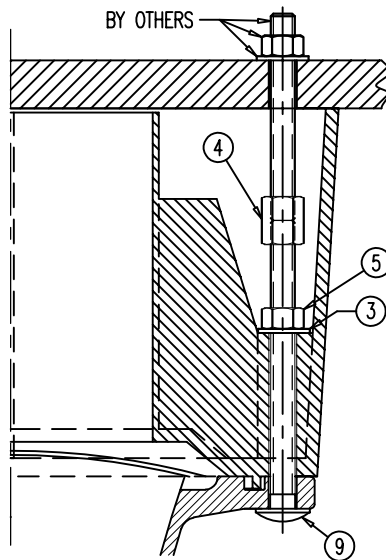
1. USE 3/8"-16UNC 316L S.S. HEX BOLTS, 3-1/4" LONG 00 00 783 W/SMALL DIA. WASHER 00 00 774.
2. INSTALL O-RING IN GROOVE USING DROPS OF LIQUID ADHESIVE BEFORE SHIPPING.
3. THE NYLON CONFORMS TO ASTM D5989, WITH CELL CLASSIFICATION S-PA0401 (ULTIMATE STRENGTH 10,000 PSI MIN., WITH UV STABILIZER ADDED).
4. DRILL 1/2" [12.7] HOLE IN PORT BEING USED-CAUTION-RECOMMEND USING HOLE SAW BIT OR SPADE BIT (BY OTHERS), BE CAREFULL TO PREVENT DAMAGE TO THREADS OR CAP.
5. WHEN PRESSURIZING GROUT CAPS, DO NOT STAND BEHIND CAPS!

DIMENSIONS: INCH [mm] mm FOR REFERENCE ONLY		QUALITY PLAN NUMBER: QS60072300P		TOLERANCES: SEE TOLERANCE NOTE	WEIGHT 0.817 LBS.	REV. 1	DATE 10/04/18	NAME S.I.	PART NUMBER: B36E50700
BAR GROUT CAP WITH O-RING FOR ALL 1" & 1-1/4" NUTS AND 1-3/8" ANCHOR NUT				MATERIAL: NYLON 6 20% GLASS FIBER FILLED COLOR: BLACK	SCALE 1:2 UNLESS NOTED				DRAWING NUMBER: B36E50700
				DATE: 10-02-06 DWG: G. MALECKI CHK: E.A. APP: K.S.					
THIS DRAWING, THE PERTINENT ENCLOSURES, DESCRIPTIONS, CALCULATIONS ETC. AND THEIR CONTENTS ARE THE PROPERTY OF DYWIDAG SYSTEMS INTERNATIONAL, USA, INC. THEY ARE NOT ALLOWED TO BE DUPLICATED WITHOUT OUR PERMISSION. THEY ARE ALSO NOT TO BE SHOWN OR EXPLAINED FOR ANY REASON TO A THIRD PARTY OTHER THAN FOR REASONS EXPRESSLY INTENDED BY DSI'S SUBMITTAL TO THE ORIGINAL RECEIVER. THEY HAVE TO BE RETURNED UPON REQUEST.									
DYWIDAG-SYSTEMS INTERNATIONAL, USA, INC. 320 MARMON DRIVE - BOLINGBROOK, IL 60440 PHONE: 630-739-1100 FAX: 630-739-1405									

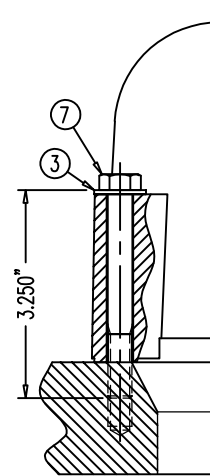




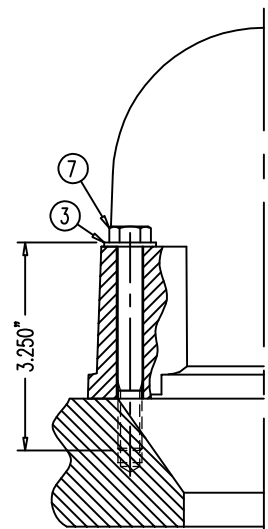
KEEPER PLATE 68 04 2637 ON
WEDGE PLATE 68 04 2534A &
NYLON CAP 68 04 2539 ON
FLAT ANCHOR 68 04 2548



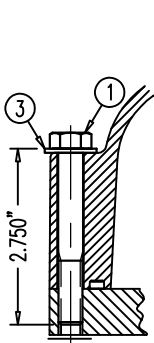
POCKET FORMER 68 04 2640
ON FLAT ANCHOR 68 04 2548



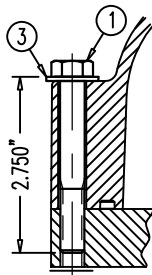
NYLON BAR CAP B36E50700 OR 50700A
ON GALV. BEARING PLATE
B26E22510, 22610, 22700, 22800,
B32E22510, 22610, 22700, 22800,
B36E22410, 22420, 22910, 22510,
22610, 22700, 22800 & NYLON
BAR CAP B66E50700 OR 50700A
ON GALV. BEARING PLATE B66E22700



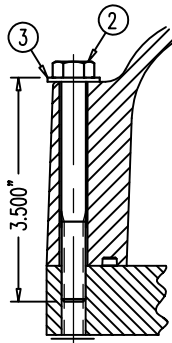
NYLON BAR CAP
B46M50700
OR 50700A
ON GALV.
BEARING PLATE
B46E22700 &
B46E22800



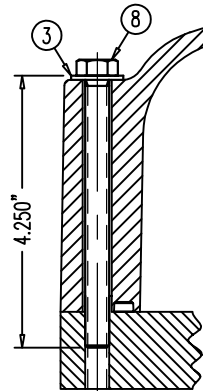
NYLON CAP
68 07 7230 OR 7230A
ON MPA 68 07 248



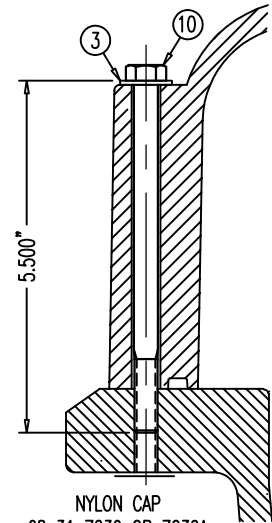
NYLON CAP
68 12 7230 OR 7230A
ON MPA 68 12 248



NYLON CAP
68 19 7230 OR 7230A
ON MPA 68 19 248



NYLON CAP
68 27 7230 OR 7230A
ON MPA 68 27 248



NYLON CAP
68 31 7230 OR 7230A
ON MPA 68 31 248

Ø.812



TYPE A NARROW WASHER
FOR 3/8"-UNC BOLT

NOTE:
THE 316L S.S. BOLTS ARE SPECIAL ORDER.
ALL WASHERS, HEX NUTS & COUPLERS HAVE
NO MARKINGS.

POS.	PART NUMBER	DISCRIPTION (ALL PARTS 316L STAINLESS STEEL UNLESS NOTED)
①	00 00 771	3/8"-16UNC HEX BOLT, 2-3/4" LONG (1" LONG THREAD)
②	00 00 772	3/8"-16UNC HEX BOLT, 3-1/2" LONG (1" LONG THREAD)
③	00 00 774	TYPE A NARROW WASHER FOR 3/8"-UNC BOLT
④	00 00 776	3/8"-16UNC COUPLER, ZINC COATED
⑤	00 00 777	3/8"-16UNC HEX NUT
⑥	00 00 778	5/16"-18UNC HEX BOLT, 7/8" LONG, ZINC PLATED
⑦	00 00 783	3/8"-16UNC HEX BOLT, 3-1/4" LONG (1" LONG THREAD)
⑧	00 00 784	3/8"-16UNC HEX BOLT, 4-1/4" LONG (FULL THREAD)
⑨	00 00 789	3/8"-16UNC CARRIAGE BOLT, 4-1/2" LONG
⑩	00 00 790	3/8"-16UNC CARRIAGE BOLT, 5-1/2" LONG

DIMENSIONS: INCH

QUALITY PLAN NUMBER:

STAINLESS STEEL 316L BOLTS AND WASHER FOR NYLON CAPS

DATE: 09-10-04 DWG: G. MALECKI CHK: E.A. APP: K.S.

THIS DRAWING, THE PERTINENT ENCLOSURES, DESCRIPTIONS, CALCULATIONS ETC. AND THEIR CONTENTS ARE THE PROPERTY OF DYWIDAG SYSTEMS INTERNATIONAL, USA, INC. THEY ARE NOT ALLOWED TO BE DUPLICATED WITHOUT OUR PERMISSION. THEY ARE ALSO NOT TO BE SHOWN OR EXPLAINED FOR ANY REASON TO A THIRD PARTY OTHER THAN FOR REASONS EXPRESSLY INTENDED BY DSI'S SUBMITTAL TO THE ORIGINAL RECEIVER. THEY HAVE TO BE RETURNED UPON REQUEST.

SCALE
1:3

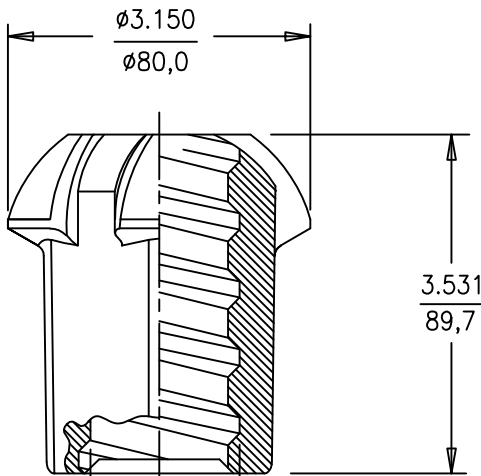
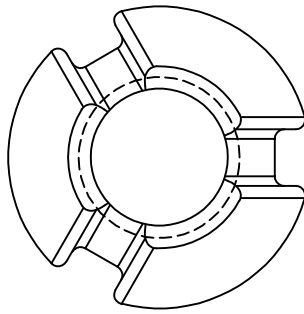
REV.	DATE	NAME	NAME
1	05/01/19	S.I.	
2	05/28/20	S.I.	

PART NUMBERS:
SEE TABLE

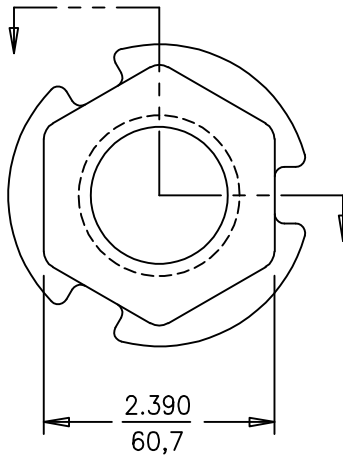
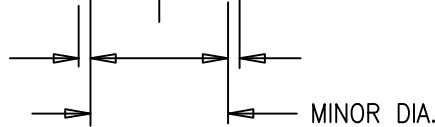
DRAWING NUMBER:
00 00 770


DYWIDAG-SYSTEMS INTERNATIONAL, USA, INC.
POST TENSIONING / REINFORCING UNIT PHONE: 630-739-1100
320 MARMON DRIVE - BOLINGBROOK, IL FAX: 630-739-1405

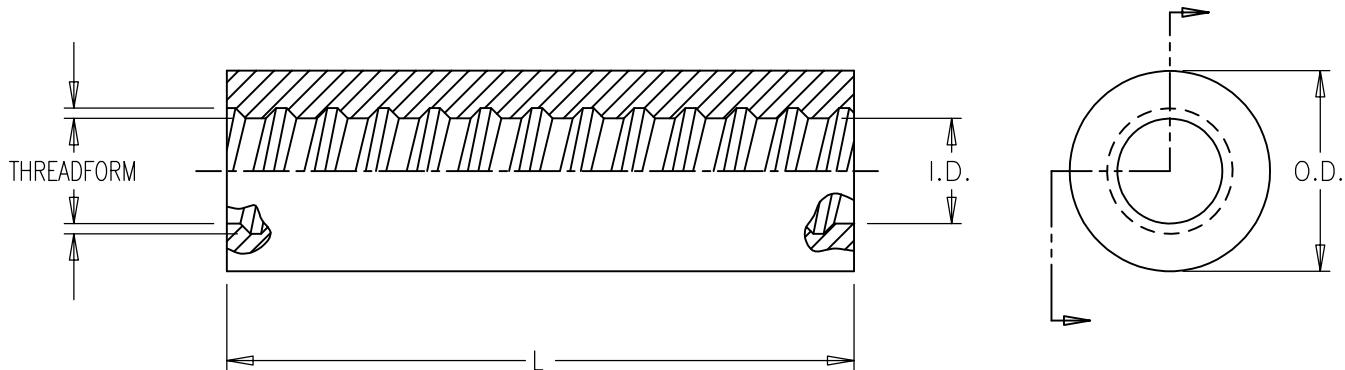
DYWIDAG



THREAD ACCORDING
TO TOLERANCE
DRAWING 8341/722
MINOR DIAMETER:
1.429-1.433
(36.30-36.40)



DIMENSIONS: INCH/mm mm FOR REFERENCE ONLY		QUALITY PLAN NUMBER: QBE0020100F		TOLERANCES: ±.035 UNLESS NOTED	WEIGHT 3.2 LBS.	REV.	DATE	NAME	PART NUMBER: B36E24210
1-3/8" GROUTABLE ANCHOR NUTS FOR THREADBAR GR. 150				MATERIAL: C1045 FORGING ASTM A521-CF MOD. NORMALIZED BHN = 180-220	SCALE 1:2				DRAWING NUMBER: B36E24200
				DATE: 06-07-05	DWG: G. MALECKI	CHK: H.K.	APP: K.S.		
THIS DRAWING, THE PERTINENT ENCLOSURES, DESCRIPTIONS, CALCULATIONS ETC. AND THEIR CONTENTS ARE THE PROPERTY OF DYWIDAG SYSTEMS INTERNATIONAL, USA, INC. THEY ARE NOT ALLOWED TO BE DUPLICATED WITHOUT OUR PERMISSION. THEY ARE ALSO NOT TO BE SHOWN OR EXPLAINED FOR ANY REASON TO A THIRD PARTY OTHER THAN FOR REASONS EXPRESSLY INTENDED BY DSI'S SUBMITTAL TO THE ORIGINAL RECEIVER. THEY HAVE TO BE RETURNED UPON REQUEST.				DYWIDAG-SYSTEMS INTERNATIONAL, USA, INC. 320 MARMON DRIVE - BOLINGBROOK, IL 60440 PHONE: 630-739-1100 FAX: 630-739-1405					

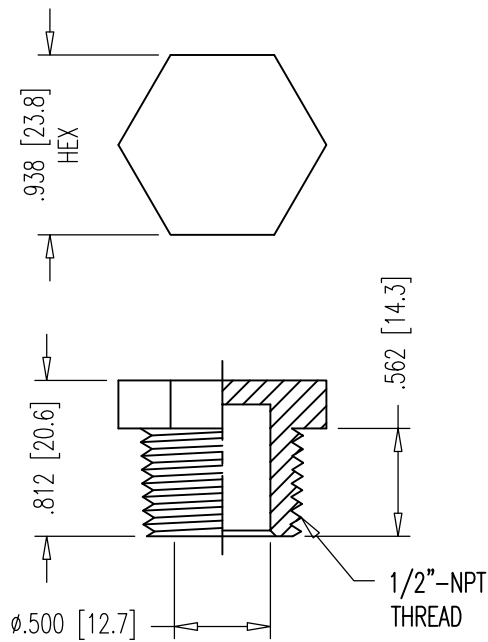


NOTES:


1. COUPLERS ALSO SUITABLE FOR GRADE 160 THREADBARS.
2. I.D. DEVIATES FROM STANDARD THREADFORM DRAWING.

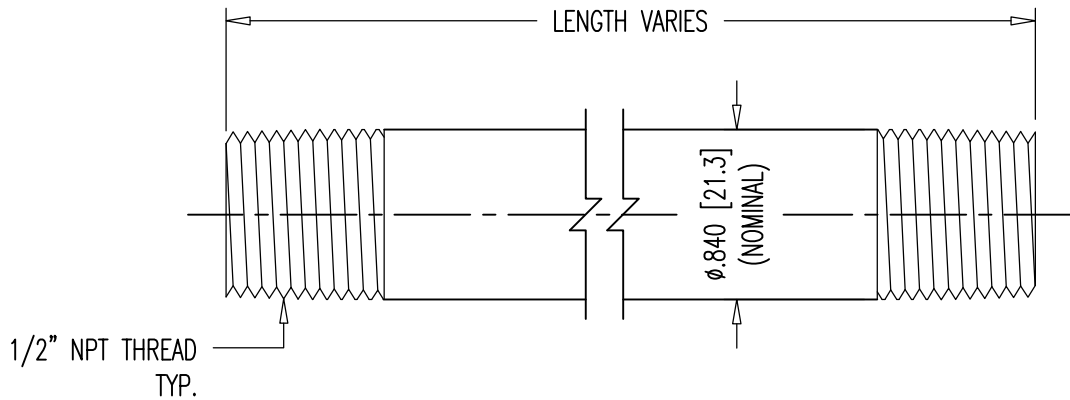
NOMINAL SIZE	1-3/8"
PART NUMBERS FOR COUPLERS:	36mm
WITHOUT SET SCREWS	B36E30710
O.D. (IN./mm)	2.500/63,5
I.D. (IN./mm)	1.433/36,4
L (IN./mm)	8.750/222,3
THREADFORM: 8341/	722
TOLERANCE FOR:	
O.D. (IN.)	+0.250-0
I.D. (IN.)	±0.004
L (IN.)	±1/16
WEIGHT (LBS.)	10.00

DIMENSIONS: INCH [mm] mm FOR REFERENCE ONLY		QUALITY PLAN NUMBER: QB00030800S		MATERIAL: C1026 CD SEAMLESS MECHANICAL TUBE ASTM A519		SCALE NTS		REV. DATE NAME ECRN		PART NUMBER: B36E30710	
1-3/8" FULL LOAD COUPLER FOR GRADE 150 THREADBAR								DRAWING NUMBER: B36E30710			
DATE: 08-05-04	DWG: G. MALECKI	CHK: H.K.	APP: K.S.	DYWIDAG-SYSTEMS INTERNATIONAL, USA, INC. 320 MARMON DRIVE - BOLINGBROOK, IL 60440 PHONE: 630-739-1100 FAX: 630-739-1405							
THIS DRAWING, THE PERTINENT ENCLOSURES, DESCRIPTIONS, CALCULATIONS ETC. AND THEIR CONTENTS ARE THE PROPERTY OF DYWIDAG SYSTEMS INTERNATIONAL, USA, INC. THEY ARE NOT ALLOWED TO BE DUPLICATED WITHOUT OUR PERMISSION. THEY ARE ALSO NOT TO BE SHOWN OR EXPLAINED FOR ANY REASON TO A THIRD PARTY OTHER THAN FOR REASONS EXPRESSLY INTENDED BY DSI's SUBMITTAL TO THE ORIGINAL RECEIVER. THEY HAVE TO BE RETURNED UPON REQUEST.											



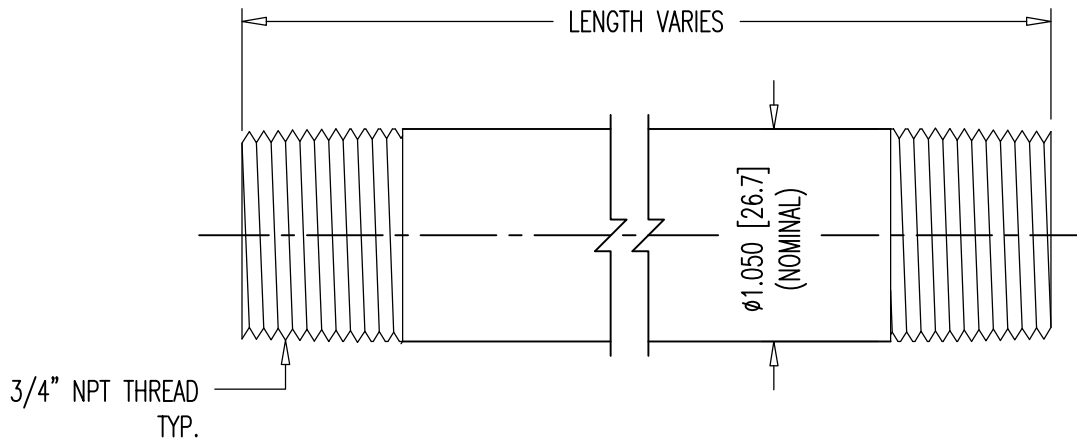
PRESSURE RATED: 150 PSI

DIMENSIONS: INCH [mm] mm FOR REFERENCE ONLY		QUALITY PLAN NUMBER:		WEIGHT .006 LBS.	REV.	DATE	NAME	ECRN	PART NUMBER: 00 00 649
1/2" NPT NYLON PLUG									
				DATE: 03-12-19	DWG: G. MALECKI	CHK: S.I.	APP: S.I.	DYWIDAG-SYSTEMS INTERNATIONAL, USA, INC. 320 MARMON DRIVE - BOLINGBROOK, IL 60440 PHONE: 630-739-1100 FAX: 630-739-1405	DYWIDAG 
THIS DRAWING, THE PERTINENT ENCLOSURES, DESCRIPTIONS, CALCULATIONS ETC. AND THEIR CONTENTS ARE THE PROPERTY OF DYWIDAG SYSTEMS INTERNATIONAL, USA, INC. THEY ARE NOT ALLOWED TO BE DUPLICATED WITHOUT OUR PERMISSION. THEY ARE ALSO NOT TO BE SHOWN OR EXPLAINED FOR ANY REASON TO A THIRD PARTY OTHER THAN FOR REASONS EXPRESSLY INTENDED BY DSI's SUBMITTAL TO THE ORIGINAL RECEIVER. THEY HAVE TO BE RETURNED UPON REQUEST.									



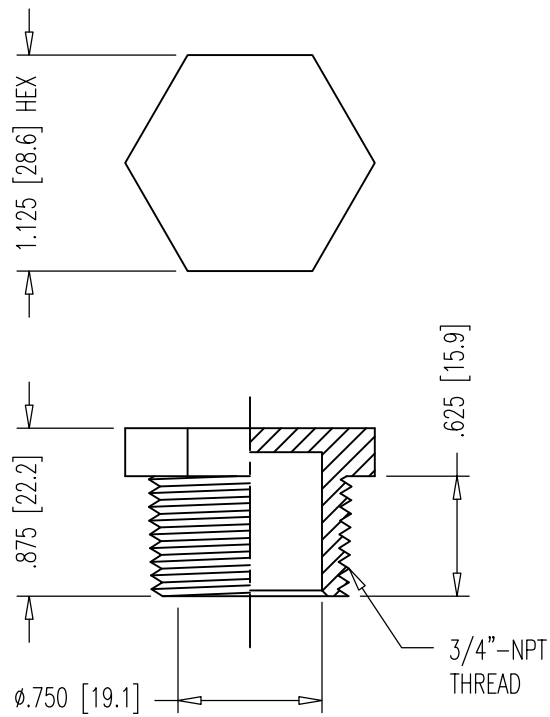
PRESSURE RATED: 150 PSI

DIMENSIONS: INCH [mm] mm FOR REFERENCE ONLY	QUALITY PLAN NUMBER: Q000000020P			REV.	DATE	NAME	
1/2" NPT PIPE NIPPLES		MATERIAL: SCH 40 BLACK WELDED STEEL	SCALE 1:1				PART NUMBER: 00 00 678
DATE: 01-29-19	DWG: G. MALECKI			CHK: S.I.	APP: S.I.		
THIS DRAWING, THE PERTINENT ENCLOSURES, DESCRIPTIONS, CALCULATIONS ETC. AND THEIR CONTENTS ARE THE PROPERTY OF DYWIDAG SYSTEMS INTERNATIONAL, USA, INC. THEY ARE NOT ALLOWED TO BE DUPLICATED WITHOUT OUR PERMISSION. THEY ARE ALSO NOT TO BE SHOWN OR EXPLAINED FOR ANY REASON TO A THIRD PARTY OTHER THAN FOR REASONS EXPRESSLY INTENDED BY DSI's SUBMITTAL TO THE ORIGINAL RECEIVER. THEY HAVE TO BE RETURNED UPON REQUEST.		DYWIDAG-SYSTEMS INTERNATIONAL, USA, INC. 320 MARMON DRIVE - BOLINGBROOK, IL 60440 PHONE: 630-739-1100 FAX: 630-739-1405			DYWIDAG		



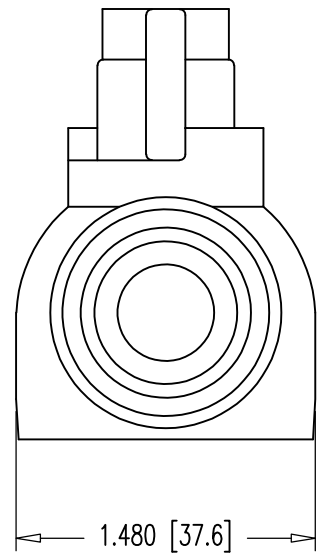
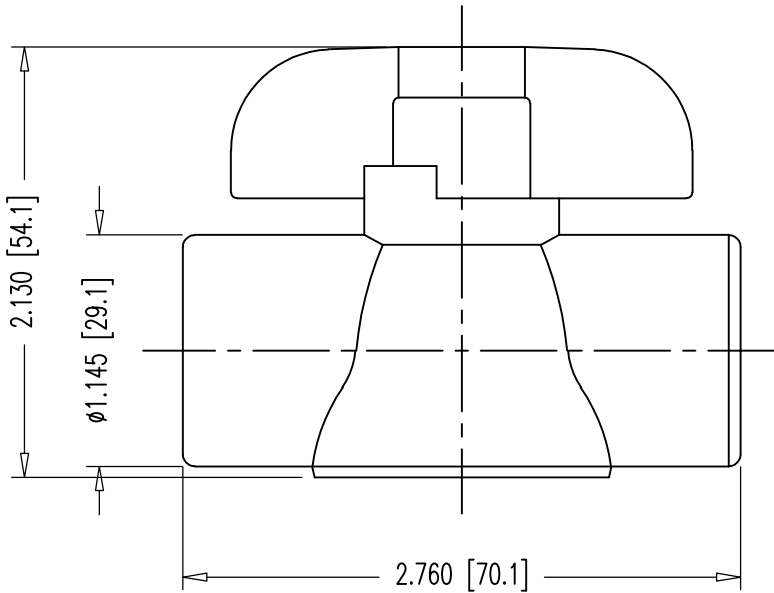
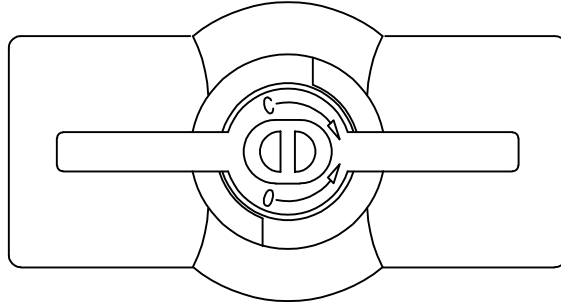
PRESSURE RATED: 150 PSI

DIMENSIONS: INCH [mm] mm FOR REFERENCE ONLY		QUALITY PLAN NUMBER: Q00000020P		REV.	DATE	NAME	ECRN	PART NUMBER: 00 00 878	
3/4" NPT PIPE NIPPLES				MATERIAL: SCH 40 BLACK WELDED STEEL	SCALE 1:1				DRAWING NUMBER: 00 00 878
				DATE: 01-29-19	DWG: G. MALECKI	CHK: S.I.	APP: S.I.		
THIS DRAWING, THE PERTINENT ENCLOSURES, DESCRIPTIONS, CALCULATIONS ETC. AND THEIR CONTENTS ARE THE PROPERTY OF DYWIDAG SYSTEMS INTERNATIONAL, USA, INC. THEY ARE NOT ALLOWED TO BE DUPLICATED WITHOUT OUR PERMISSION. THEY ARE ALSO NOT TO BE SHOWN OR EXPLAINED FOR ANY REASON TO A THIRD PARTY OTHER THAN FOR REASONS EXPRESSLY INTENDED BY DSI's SUBMITTAL TO THE ORIGINAL RECEIVER. THEY HAVE TO BE RETURNED UPON REQUEST.				DYWIDAG-SYSTEMS INTERNATIONAL, USA, INC. 320 MARMON DRIVE - BOLINGBROOK, IL 60440 PHONE: 630-739-1100 FAX: 630-739-1405				DYWIDAG	



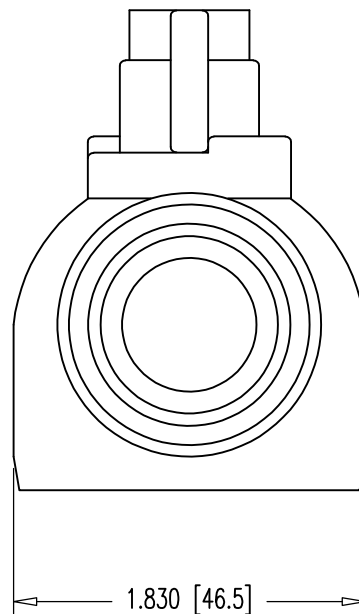
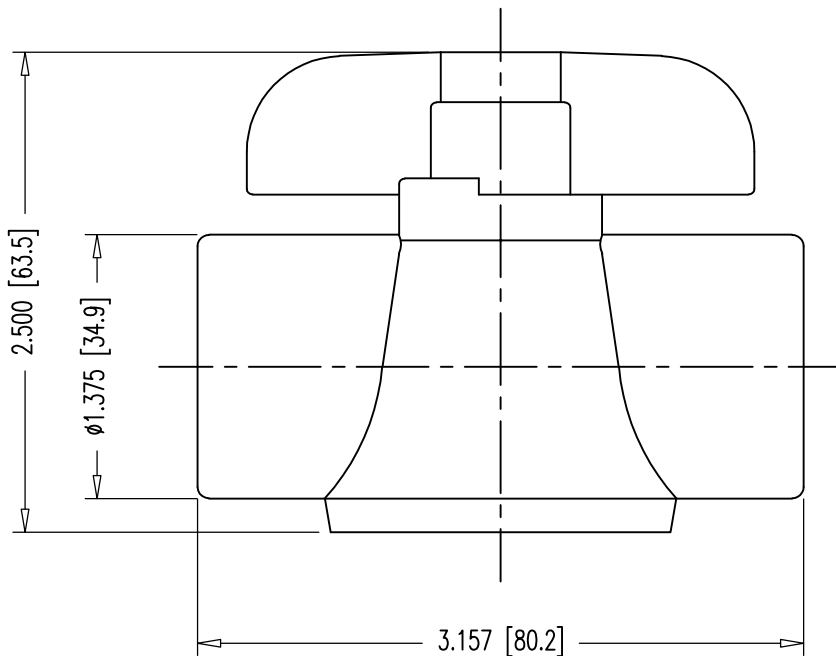
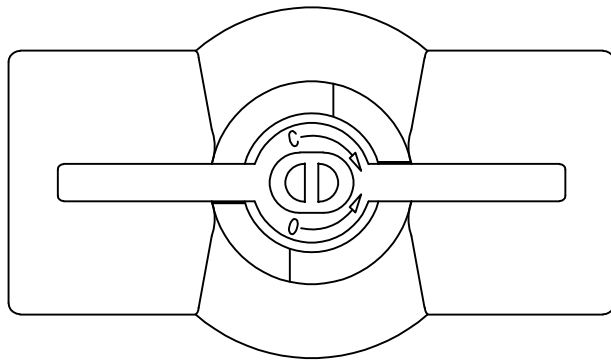
PRESSURE RATED: 150 PSI

DIMENSIONS: INCH [mm] mm FOR REFERENCE ONLY		QUALITY PLAN NUMBER:		WEIGHT .009 LBS.	REV.	DATE	NAME	PART NUMBER: 00 00 849
3/4" NPT NYLON PLUG								
				DATE: 03-12-19	DWG: G. MALECKI	CHK: S.I.	APP: S.I..	MATERIAL: NYLON 6 COLOR: WHITE
THIS DRAWING, THE PERTINENT ENCLOSURES, DESCRIPTIONS, CALCULATIONS ETC. AND THEIR CONTENTS ARE THE PROPERTY OF DYWIDAG SYSTEMS INTERNATIONAL, USA, INC. THEY ARE NOT ALLOWED TO BE DUPLICATED WITHOUT OUR PERMISSION. THEY ARE ALSO NOT TO BE SHOWN OR EXPLAINED FOR ANY REASON TO A THIRD PARTY OTHER THAN FOR REASONS EXPRESSLY INTENDED BY DSI's SUBMITTAL TO THE ORIGINAL RECEIVER. THEY HAVE TO BE RETURNED UPON REQUEST.								



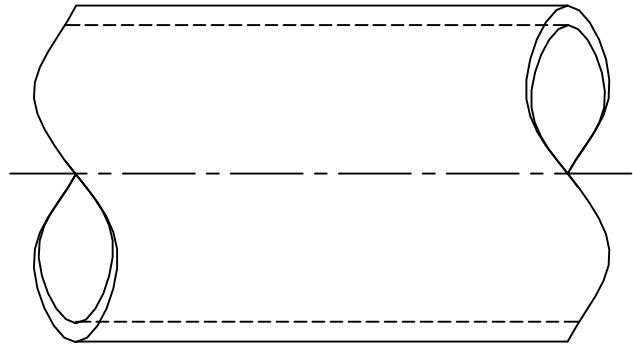
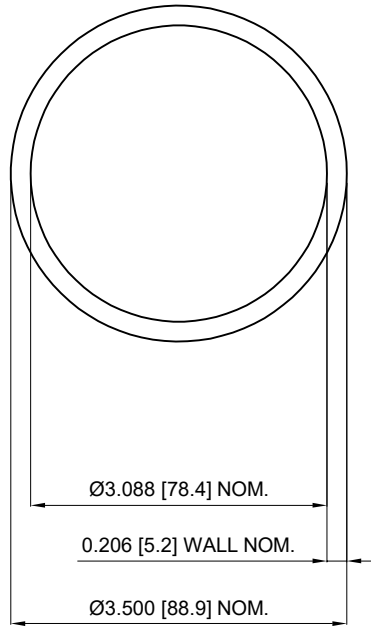
NOTE:
 PRESSURE RATED: 150 PSI.

DIMENSIONS: INCH [mm] mm FOR REFERENCE ONLY		QUALITY PLAN NUMBER:		WEIGHT 0.138 LBS.	REV.	DATE	NAME	PART NUMBER: 00 00 634
1/2" NPT BALL VALVE					1	01-11-19	S.I.	
				MATERIAL: PVC	SCALE 1:1			
DATE: 04-30-07	DWG: G. MALECKI	CHK: S.N.	APP: E.A.					
THIS DRAWING, THE PERTINENT ENCLOSURES, DESCRIPTIONS, CALCULATIONS ETC. AND THEIR CONTENTS ARE THE PROPERTY OF DYWIDAG SYSTEMS INTERNATIONAL, USA, INC. THEY ARE NOT ALLOWED TO BE DUPLICATED WITHOUT OUR PERMISSION. THEY ARE ALSO NOT TO BE SHOWN OR EXPLAINED FOR ANY REASON TO A THIRD PARTY OTHER THAN FOR REASONS EXPRESSLY INTENDED BY DSI'S SUBMITTAL TO THE ORIGINAL RECEIVER. THEY HAVE TO BE RETURNED UPON REQUEST.				DYWIDAG-SYSTEMS INTERNATIONAL, USA, INC. 320 MARMON DRIVE - BOLINGBROOK, IL 60440 PHONE: 630-739-1100 FAX: 630-739-1405				



▲ NOTE:
PRESSURE RATED: 150 PSI.

DIMENSIONS: INCH [mm] mm FOR REFERENCE ONLY		QUALITY PLAN NUMBER:		WEIGHT 0.213 LBS.	REV.	DATE	NAME	PART NUMBER: 00 00 834
3/4" NPT BALL VALVE					SCALE 1:1	1	01-11-19	
				DATE: 04-30-07		DWG: G. MALECKI	CHK: S.N.	APP: E.A.
THIS DRAWING, THE PERTINENT ENCLOSURES, DESCRIPTIONS, CALCULATIONS ETC. AND THEIR CONTENTS ARE THE PROPERTY OF DYWIDAG SYSTEMS INTERNATIONAL, USA, INC. THEY ARE NOT ALLOWED TO BE DUPLICATED WITHOUT OUR PERMISSION. THEY ARE ALSO NOT TO BE SHOWN OR EXPLAINED FOR ANY REASON TO A THIRD PARTY OTHER THAN FOR REASONS EXPRESSLY INTENDED BY DSI's SUBMITTAL TO THE ORIGINAL RECEIVER. THEY HAVE TO BE RETURNED UPON REQUEST.				DYWIDAG-SYSTEMS INTERNATIONAL, USA, INC. 320 MARMON DRIVE - BOLINGBROOK, IL 60440 PHONE: 630-739-1100 FAX: 630-739-1405				

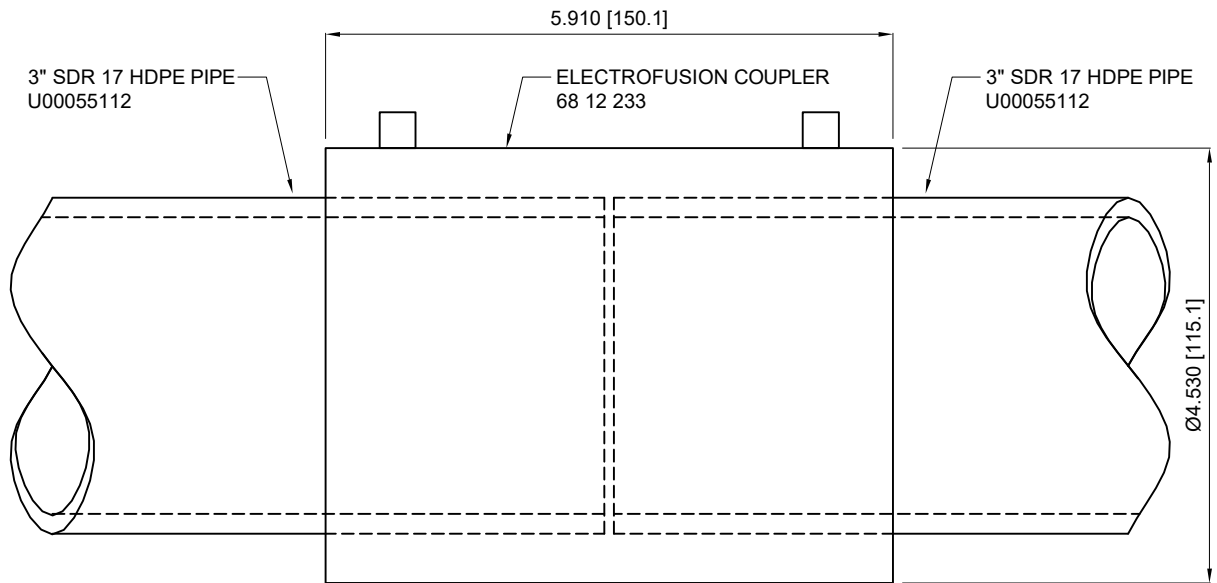


MATERIAL: 3" SDR 17 HDPE PIPE.

SPECIFICATIONS:

1. PIPE SHALL BE OF HIGH-DENSITY POLYETHYLENE AND SHALL HAVE A MAXIMUM DIMENSION RATIO (DR) OF 17 AS ESTABLISHED BY EITHER ASTM D3035 OR ASTM F714, AS APPROPRIATE FOR MANUFACTURING PROCESS USED..
2. PIPE SHALL HAVE A MINIMUM PRESSURE RATING OF 125 PSI.
3. MEETS REQUIREMENTS OF ASTM D3350 WITH A MINIMUM CELL CLASS OF 445574C.
4. CONTAINS ANTIOXIDANTS WITH A MINIMUM OXIDATIVE-INDUCTION TIME (OIT) ACCORDING TO ASTM D3895 OF 40 MINUTES.
5. REMOLDED FINISHED MATERIAL HAS A MINIMUM FAILURE TIME OF THREE HOURS WHEN TESTED FOR STRESS CRACK RESISTANCE USING ASTM F2136 AT AN APPLIED STRESS OF 348 PSI.
6. MINIMUM BEND RADIUS = 20 FT.

DIMENSIONS: INCH [mm] mm FOR REFERENCE ONLY		QUALITY PLAN NUMBER:		TOLERANCES: UNLESS NOTED	WEIGHT 0.92 LBS./FT.	REV. 05/28/20	DATE	DWG. S.I.	CHK.	PART NUMBER U00055112
3" SMOOTH HDPE PIPE FOR FLEXIBLE FILLER & EXTERNAL GROUTED TENDON				MATERIAL SEE ABOVE	SCALE 1 : 2					DRAWING NUMBER: U00055112
DATE: 09/19/18	DWG: I. TIRA	CHK: SI	APP: SI	THIS DRAWING, THE PERTINENT ENCLOSURES, DESCRIPTIONS, CALCULATIONS ETC. AND THEIR CONTENTS ARE THE PROPERTY OF DYWIDAG SYSTEMS INTERNATIONAL, USA, INC. THEY ARE NOT ALLOWED TO BE DUPLICATED WITHOUT OUR PERMISSION. THEY ARE ALSO NOT TO BE SHOWN OR EXPLAINED FOR ANY REASON TO A THIRD PARTY OTHER THAN FOR REASONS EXPRESSLY INTENDED BY DSI'S SUBMITTAL TO THE ORIGINAL RECEIVER. THEY HAVE TO BE RETURNED UPON REQUEST.						
DYWIDAG-SYSTEMS INTERNATIONAL, USA, INC. POST TENSIONING / REINFORCING UNIT PHONE: 630-739-1100 320 MARMON DRIVE - BOLINGBROOK, IL FAX: 630-739-1405										



INSTALLATION PROCEDURE:

(SEE MANUFACTURER INSTRUCTION MANUAL FOR DETAILED INSTRUCTIONS)

1. CUT PIPE ENDS PRECISELY AT RIGHT ANGLES TO THE PIPE AXIS.
2. CLEAN BOTH PIPE ENDS CAREFULLY.
3. SCRAP BOTH PIPES ENDS AS REQUIRED TO REMOVE THE OXIDE LAYER COMPLETELY
4. CLEAN BOTH PIPE ENDS WITH CONCENTRATED ISOPROPYL ALCOHOL.
5. USE REROUNDING TOOLS TO CORRECT OVAL PIPE IF NEEDED.
6. USE ALIGNMENT CLAMPS TO SECURE THE ALIGNMENT OF CONNECTED PIPES
7. PROVIDE SUPPORT TO THE PIPE AND COUPLER TO PREVENT ANY MOVEMENT.
8. ENSURE THERE IS NO EXISTING GAPS BETWEEN COUPLE AND PIPE FACE.
9. ATTACH LEADS OF THE FUSION PROCESSOR TO THE COUPLER.
10. SCAN THE BARCODE ON THE COUPLER AND CONFIRM THE COUPLER'S SIZE ON THE PROCESSOR SCREEN.
11. INITIATE FUSION PROCESS.
12. UNPLUG THE LEADS AS SOON AS THE FUSION PROCESS ENDS.
13. CHECK COOLING TIME OF THE PROVIDED COUPLER BASED ON COUPLER'S SIZE.
14. DO NOT ALLOW MOVEMENT OR APPLIED PRESSURE ON THE JOINTS BEFORE COOLING TIME ENDS.

DIMENSIONS: INCH [mm] mm FOR REFERENCE ONLY		QUALITY PLAN NUMBER:		WEIGHT 1.330 LBS	REV.	DATE	DWG.	CHK.	PART NUMBER 68 12 233	
ELECTROFUSION COUPLER CONNECTION FOR 3" SDR 17 HDPE PIPE					MATERIAL:	SCALE 1 : 2				DRAWING NUMBER: 68 12 233
				DATE: 11/02/18	DWG: I. TIRA	CHK: SI	APP: SI	COMPOSITE		
THIS DRAWING, THE PERTINENT ENCLOSURES, DESCRIPTIONS, CALCULATIONS ETC. AND THEIR CONTENTS ARE THE PROPERTY OF DYWIDAG SYSTEMS INTERNATIONAL, USA, INC. THEY ARE NOT ALLOWED TO BE DUPLICATED WITHOUT OUR PERMISSION. THEY ARE ALSO NOT TO BE SHOWN OR EXPLAINED FOR ANY REASON TO A THIRD PARTY OTHER THAN FOR REASONS EXPRESSLY INTENDED BY DSI'S SUBMITTAL TO THE ORIGINAL RECEIVER. THEY HAVE TO BE RETURNED UPON REQUEST.				DYWIDAG-SYSTEMS INTERNATIONAL, USA, INC. POST TENSIONING / REINFORCING UNIT PHONE: 630-739-1100 320 MARMON DRIVE - BOLINGBROOK, IL FAX: 630-739-1405						

DIMENSIONS & ORDERING INFO	P	L	A	-	XXX	-	YYY	-	ZZ	STANDARD ORDERING OPTIONS
										YE - YELLOW, BK - BLACK
										300mm, 450mm, 600mm, 900mm (12", 18", 24", 36")
										63mm -315mm (2-1/2" - 12")
										A - 0.75 mm (30 mils)
										L - 0.80 mm (31 mils)
										P - Tubular

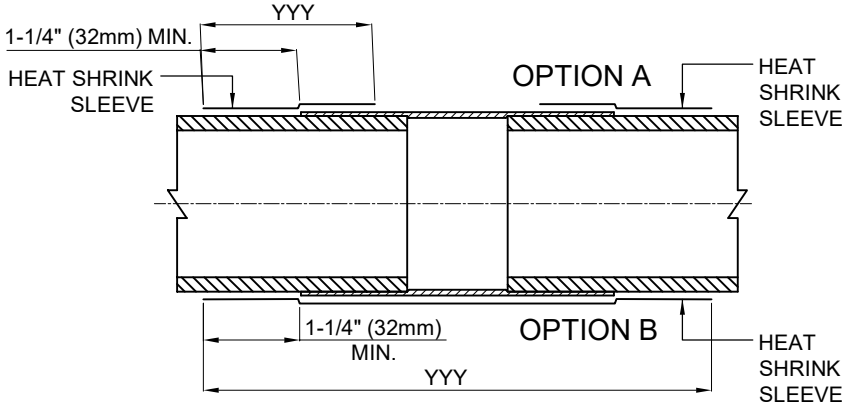
TUBULAR SLEEVE	TUBULAR SLEEVE DIAMETER AS SUPPLIED	TUBULAR SLEEVE DIAMETER FULLY RECOVERED
PLA 63-YYY YE	3.5" [90mm]	2.5" [63mm]
PLA 90-YYY YE	4.8" [120mm]	3.3" [81mm]
PLA 115-YYY BK	5.5" [145mm]	3.8" [98mm]
PLA 125-YYY YE	6.3" [160mm]	4.3" [110mm]
PLA 160-YYY BK	7.5" [190mm]	5.2" [130mm]
⚠ PMA 90/30-YYY BK	3.5" [90mm]	1.2" [30mm]
⚠ PMA 120/40-YYY BK	4.7" [120mm]	1.6" [40mm]

YYY = SLEEVE WIDTH: 300/450/600/900/1500(mm)
 COLOR: YE = YELLOW; BK = BLACK

PMA - HIGH SHRINK SLEEVE.
 HIGH SHRINK TUBULAR BACKING.

MATERIAL:
 ACCORDING TO FDOT SPECIFICATION
 POST TENSIONING, SECTION 462 - 4, 2, 6, 3.

- NOTES:**
- ORDER DIRECT FROM CANUSA
 TEL. 281 367 - 8866
 FAX. 281 367 - 4304
 - SELECT ORDER LENGTH AS A MULTIPLE OF THE ACTUAL LENGTH.
 - OTHER COLORS SLEEVE MAY BE AVAILABLE UPON REQUEST.
 - ALWAYS HEAT THE DUCT ENDS FIRST.



NOTE:
 FOLLOW MANUFACTURER'S
 INSTALLATION INSTRUCTIONS.

	DUCT SIZE ⚠	STRAND SYSTEM	BAR SYSTEM	HEAT SHRINK SLEEVE SIZE	PART NUMBER
CORRUGATED DUCT	1" x 3" (25mm x 76mm)	4-0.6"		PLA-63-450 YE	U00044063
	2-3/8" (59mm)	7-0.6"		PLA-63-450 YE	U00044063
				1", 1-1/4", 1-3/8"	PMA-90/30-450 BK ⚠
	3" (76mm)		1 3/4"	⚠ PMA-120/40-450 BK	⚠ U00044040
	3-3/8" (85mm)	12-0.6"		PLA-90-450 YE	U00044090
	4" (100mm)		2-1/2"	PLA-90-450 YE	U00044090
	4" (100mm)	19-0.6"		PLA-115-450 BK	U00044115
	4-1/2" (115mm)	27-0.6"		PLA-125-450 YE	U00044125
5-1/8" (130mm)	31-0.6", 37-0.6"		PLA-160-450 BK	U00044160	
⚠ SMOOTH DUCT	3" SDR 17 HDPE PIPE		1-3/8"	PLA-63-450 YE	U00044063

DIMENSIONS: INCH [mm] mm FOR REFERENCE ONLY		REV. ⚠ 05-28-20		DATE	NAME	ECRN	PART NUMBERS: SEE TABLE ABOVE
HEAT SHRINK SLEEVE SIZES FOR INTERNAL GROUTED APPLICATIONS		SCALE					
		NTS					
DATE: 07-31-19	DWG: G. Malecki	CHK: S.I.	APP: S.I.	DRAWING NUMBER: U00044000			
THIS DRAWING, THE PERTINENT ENCLOSURES, DESCRIPTIONS, CALCULATIONS ETC. AND THEIR CONTENTS ARE THE PROPERTY OF DYWIDAG SYSTEMS INTERNATIONAL, USA, INC. THEY ARE NOT ALLOWED TO BE DUPLICATED WITHOUT OUR PERMISSION. THEY ARE ALSO NOT TO BE SHOWN OR EXPLAINED FOR ANY REASON TO A THIRD PARTY OTHER THAN FOR REASONS EXPRESSLY INTENDED BY DSI'S SUBMITTAL TO THE ORIGINAL RECEIVER. THEY HAVE TO BE RETURNED UPON REQUEST.				DYWIDAG-SYSTEMS INTERNATIONAL, USA, INC. 320 MARMON DRIVE - BOLINGBROOK, IL 60440 PHONE: 630-739-1100 FAX: 630-739-1405			
				DYWIDAG			