



Florida Department of Transportation

RICK SCOTT
GOVERNOR

605 Suwannee Street
Tallahassee, FL 32399-0450

ANANTH PRASAD
SECRETARY

ROADWAY DESIGN BULLETIN 12-16 STRUCTURES DESIGN BULLETIN 12-13

DATE: August 30, 2012

TO: District Design Engineers and Plans Preparation Manual Holders

FROM: Duane F. Brautigam, PE, Director, Office of Design
Robert V. Robertson, P.E., State Structures Design Engineer

Handwritten signatures in blue ink for Duane F. Brautigam and Robert V. Robertson.

COPIES: Brian Blanchard, Tom Byron, David Sadler, Tim Lattner, Mark Wilson, Bruce Dana, John Krause, and Chris Richter (FHWA)

SUBJECT: Design Standards Revisions (DSR) - Inclusion of Revised Index Drawings in the Plans

This bulletin introduces a new requirement for including revised index drawings into the contract plan set prior to project letting dates.

REQUIREMENTS

Plans Preparation Manual.

- A. Revise the Plans Preparation Manual, Volume 2, Section 3.6 (Index of Sheets) and add the following new section after the last paragraph of Section 3.6.

3.6.1 Revised Index Drawings

A complete List of Revised Index Drawings shall be placed on the left side of the lead key sheet below the last sheet listed in the Index of Plans and above the Governing Standards and Specifications note. When revisions to the design standards are incorporated into the project design, only those revised index drawings shall be appended and listed as follows:

LIST OF REVISED INDEX DRAWINGS

INDEX NO. ***SHEET NO.***

- B. Revise the Plans Preparation Manual, Volume 2, Section 3.8, Governing Standards and Specifications as follows:

The year of the governing *Design Standards* and the *Standard Specifications for Road and Bridge Construction* shall be inserted in a note at the lower left corner of the contract plans lead key sheet.

The *Design Standards* are published and released as an annual *eBooklet* posted on the Roadway Design Office web site. The complete volume is published on an annual cycle. An effective implementation date is issued by *Design Bulletin* and coincides with the beginning of the calendar year, which is January 1, each year. The *eBooklet* is published and released July 1, six (6) months prior to its effective date.

Revisions to the *Design Standards* produced by the Department between regularly scheduled releases of the *Design Standards eBooklet* are accomplished by issuing *Design Bulletins* for all applicable revised *Index Drawings*. One or more of these revisions may be incorporated into the contract plans, by listing the revised index drawing number with associated sheet numbers under the *LIST OF REVISED INDEX DRAWINGS* on the contract plans lead key sheet.

Design Bulletins and revised *Index Drawings* are issued in Portable Document Format (PDF) and posted on the Roadway Design Office web site. Revisions will be issued on an “as needed” basis to effect changes of immediate concern. The effective date for implementation of revised *Index Drawings* will be issued via *Design Bulletin*. When this occurs, email notification will be sent to District Design Engineers and registered Plans Preparation Manual holders.

The appropriate revised *Index Drawing* number with associated sheet number shall be listed on the lead key sheet below the last Index of Plans sheet and above the Governing Standards and Specifications note. List and append only those revised *Index Drawings* which are applicable to the project.

Developmental Design Standards (DDS) are to be inserted at the end of plan sets as applicable. When they are included in bridge plan sets, DDS are to be inserted before existing bridge plans if they are present. DDS are to be listed in the index of sheets for the plans component in which they are included.

The Governing Specifications and Standards note shall not be shown on the key sheets of component plans that are listed on the lead key sheet of the plan set. *Exhibits 3-1* and *KS-1* give examples on how these notes are shown.

C. Revise the Plans Preparation Manual, Volume 2, Exhibit 3-1, Standard Key Sheet Notes as follows:

3. The following shall be used on all projects:

GOVERNING STANDARDS AND SPECIFICATIONS:

Florida Department of Transportation, 20__ Design Standards and revised Index Drawings as appended herein, and 20__ Standard Specifications for Road and Bridge Construction, as amended by Contract Documents.

For Design Standards click on the “Design Standards” link at the following web site:

<http://www.dot.state.fl.us/rddesign/>

For the Standard Specifications for Road and Bridge Construction click on the "Specifications" link at the following web site:

<http://www.dot.state.fl.us/specificationsoffice/>

- D. Revise the Plans Preparation Manual, Volume 2, Exhibit 3-1, Standard Key Sheet Notes to Delete Key Sheet Note 4.
- E. Revise the Plans Preparation Manual, Volume 2, Exhibit KS-1; Standard Key Sheet Notes - see attachment, *Exhibit KS-1*.

BACKGROUND

The Department desires to move toward quicker implementation of items that can bring significant cost savings, bring important new technology on line, and address critical safety issues. Combined with our continued desire to make our contract documents as clear as possible, revised Index Drawings shall be included in the contract plans for which they apply.

IMPLEMENTATION

Beginning with the January 2013 lettings, revised Index Drawings with an effective date of January 1, 2013 or later shall be included in the contract plans per the procedures above.

CONTACT

Frank T. Sullivan, PE
Roadway Design Administrator
605 Suwannee Street, MS 32
Tallahassee, FL 32399-0450
Phone (850) 414-4324
Frank.Sullivan@dot.state.fl.us

John Mauthner, PE
Design Standards Manager
605 Suwannee Street, MS 32
Tallahassee, FL 32399-0450
Phone (850) 414-4334
John.Mauthner@dot.state.fl.us

FS/JM/jm

Attachment
Exhibit KS-1

COMPONENTS OF CONTRACT PLANS SET

- ROADWAY PLANS
- SIGNING AND PAVEMENT MARKING PLANS
- SIGNALIZATION PLANS
- INTELLIGENT TRANSPORTATION SYSTEMS PLANS
- LIGHTING PLANS
- LANDSCAPE PLANS
- ARCHITECTURAL PLANS
- STRUCTURE PLANS

A DETAILED INDEX APPEARS ON THE KEY SHEET OF EACH COMPONENT

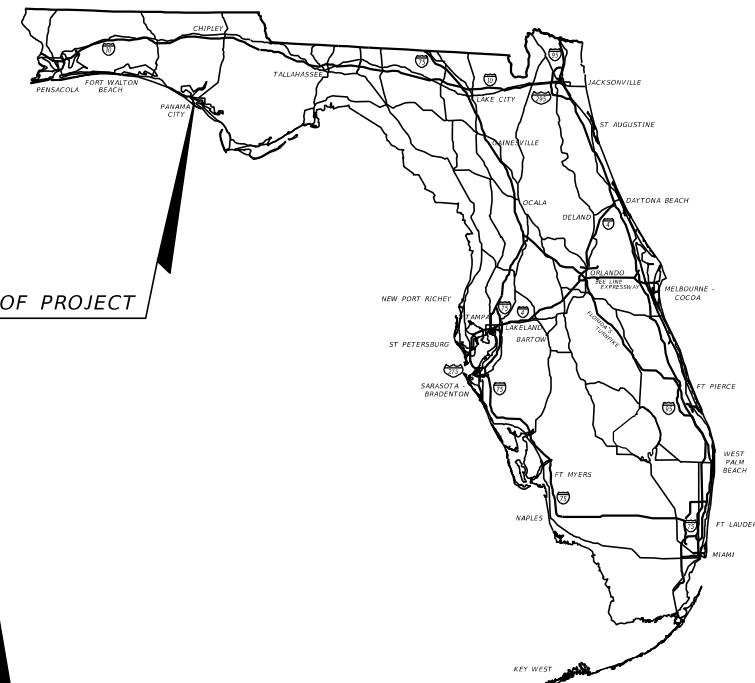
EXAMPLE ONLY: CONTRACT PLANS SET MAY NOT CONTAIN ALL OF THE LISTED COMPONENTS/SHEETS.

**STATE OF FLORIDA
DEPARTMENT OF TRANSPORTATION**

CONTRACT PLANS

FINANCIAL PROJECT ID 000001-1-52-01
(FEDERAL FUNDS)
BAY COUNTY (46001)
STATE ROAD NO. 22

LOCATION OF PROJECT



INDEX OF ROADWAY PLANS

SHEET NO.	SHEET DESCRIPTION
1	KEY SHEET
2-2A	SUMMARY OF PAY ITEMS
3	DRAINAGE MAP
4-5	TYPICAL SECTIONS
6	TYPICAL SECTION DETAILS
7	SUMMARY OF QUANTITIES
8	SUMMARY OF DRAINAGE STRUCTURES
9	OPTIONAL MATERIALS TABULATION
10	PROJECT LAYOUT
11-15	ROADWAY PLAN-PROFILES
16-17	SPECIAL PROFILES
18	INTERSECTION LAYOUT/DETAIL
19-25	DRAINAGE STRUCTURES
26-32	BOX CULVERT DETAILS
33	LATERAL DITCH PLAN-PROFILES
34	LATERAL DITCH CROSS SECTIONS
35	SPECIAL DETAILS
36	ROADWAY SOIL SURVEY
37-47	CROSS SECTIONS
48	STORMWATER POLLUTION PREVENTION PLANS
49-52	TEMPORARY TRAFFIC CONTROL PLANS
53-57	UTILITY ADJUSTMENTS
58-62	SELECTIVE CLEARING AND GRUBBING

LIST OF REVISED INDEX DRAWINGS

INDEX NO.	SHEET NO.
11871	1

GOVERNING STANDARDS AND SPECIFICATIONS:

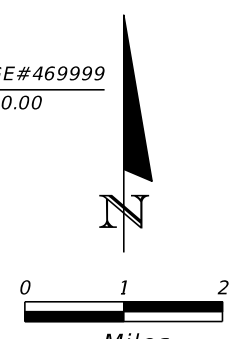
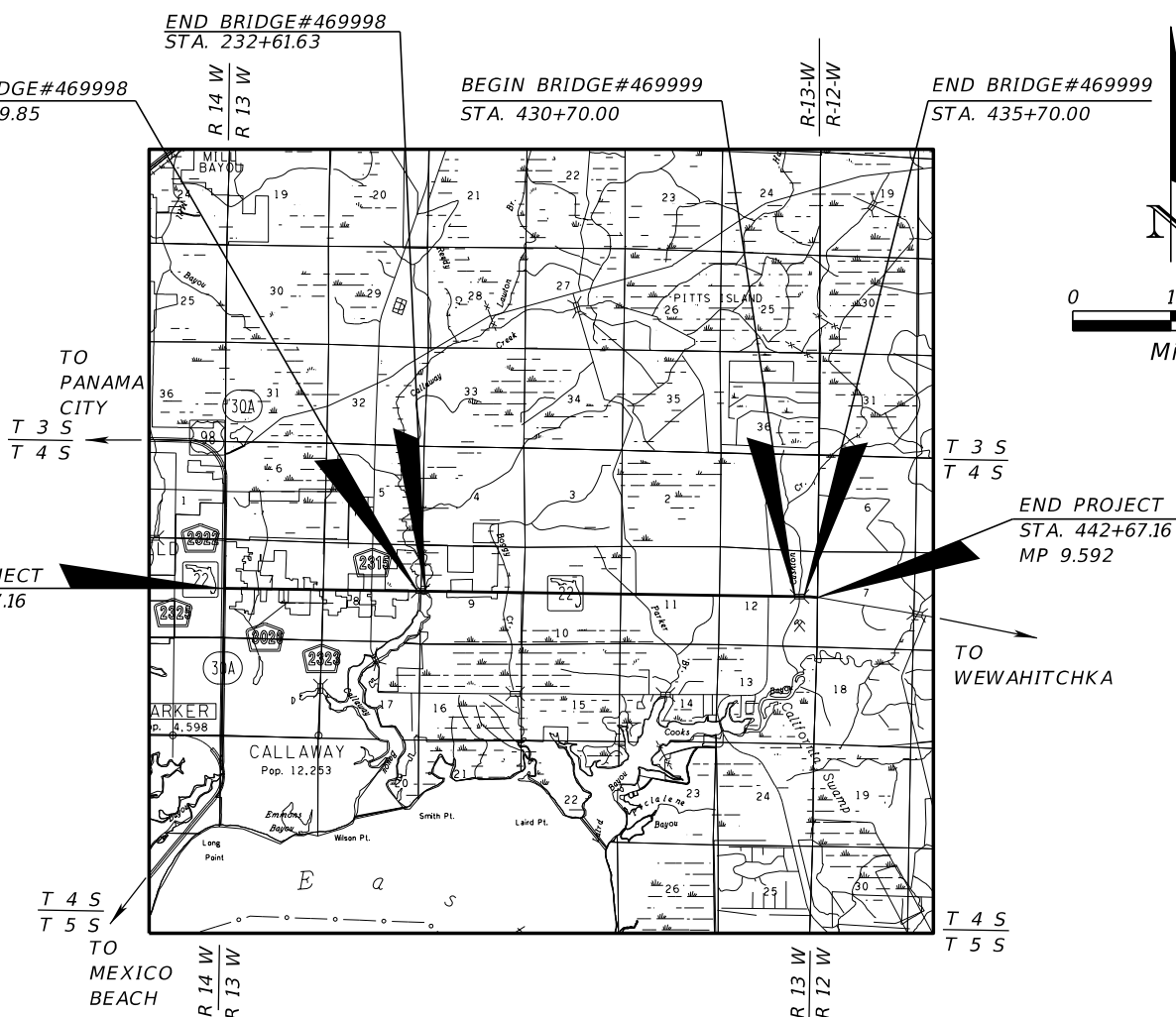
Florida Department of Transportation, 2013 Design Standards and revised Index Drawings as appended herein, and 2013 Standard Specifications for Road and Bridge Construction, as amended by Contract Documents.

For Design Standards click on the "Design Standards" link at the following web site:
<http://www.dot.state.fl.us/rddesign/>

For the Standard Specifications for Road and Bridge Construction click on the "Specifications" link at the following web site:
<http://www.dot.state.fl.us/specificationsoffice/>

REVISIONS

- FINANCIAL PROJECT ID 000001-1-52-01
- △ Roadway Sheets 1, 6, 7 & 13 (Revised 01-10-12)
 - △ Signing & Pavement Marking Sheets S-2 & S-3 (Revised 3-10-12)
 - △ Signalization Sheets T-1 & T-2 (Revised 3-10-12)
 - △ Roadway Sheets 14 & 33 (Revised 3-31-12)
 - △ Summary Of Pay Items (Revised 3-31-12)
- FINANCIAL PROJECT ID 000002-1-52-02
- △ Roadway Sheets 1, 8 & 10 (Revised 1-30-12)
 - △ Structure Sheets B-1 & C-1 thru C-10 (Revised 1-30-12)



ROADWAY SHOP DRAWINGS TO BE SUBMITTED TO:

NAME(S) AND ADDRESS(ES) OF ENGINEER(S) RESPONSIBLE FOR REVIEW OF SHOP DRAWINGS, WHEN REQUIRED.

PLANS PREPARED BY:

NAME, ADDRESS, CONSULTANT CONTRACT NUMBER, VENDOR NUMBER, AND CERTIFICATE OF AUTHORIZATION NUMBER OF THE CONSULTANT FIRM WHEN THE PLANS ARE PREPARED BY A CONSULTANT.

NOTE: THIS PROJECT TO BE LET TO CONTRACT WITH FINANCIAL PROJECT ID 000002-1-52-02

NOTE: THE SCALE OF THESE PLANS MAY HAVE CHANGED DUE TO REPRODUCTION.

EXHIBIT KS-1
Date: 1/1/13

LENGTH OF PROJECT		
	LINEAR FEET	MILES
ROADWAY	31,048.22	5.880
BRIDGES	631.78	0.120
NET LENGTH OF PROJECT	31,680.00	6.000
EXCEPTIONS		
GROSS LENGTH OF PROJECT	31680.00	6.000

KEY SHEET REVISIONS	
DATE	DESCRIPTION
1-10-12	Revised sequence of contract plans.

ROADWAY PLANS ENGINEER OF RECORD: _____

P.E. NO.: _____

FISCAL YEAR	SHEET NO.
13	1

FDOT PROJECT MANAGER:

NOTICE: THE OFFICIAL RECORD OF THIS SHEET IS THE ELECTRONIC FILE SIGNED AND SEALED UNDER RULE 61G15-23.003, F.A.C.