

SUMMARY

The Airport Council International (ACI) is a non-profit organization focused on supporting airports worldwide promoting professional excellence in airport operations. ACI collects and provides data and statistics on cargo and passenger air traffic. Data include annual and monthly traffic information which provides a comprehensive overview of passenger, cargo and air traffic movements, airports economics and statistics, customized statistics packages, aviation publications, and user charges calculator which allows members to compare the distribution of aeronautical charges across various airports and countries. Their cargo traffic data includes international and domestic tons, loaded and unloaded mail statistics, as well as total freight and cargo statistics for all airports worldwide.

MORE ABOUT THE DATA:

Developer: [Airport Council International](#)

Update Frequency: Monthly

Latest Year Available: 2014

Temporal Coverage: Daily

Geographical Coverage: Worldwide

Geographical Resolution: Airports

Modal Coverage: Air

Data Format: MS Excel

Licensing Agreement: Required

Acquisition Cost: Variable

Contact:

[FDOT TRANSTAT](#)

(850) 414-4848

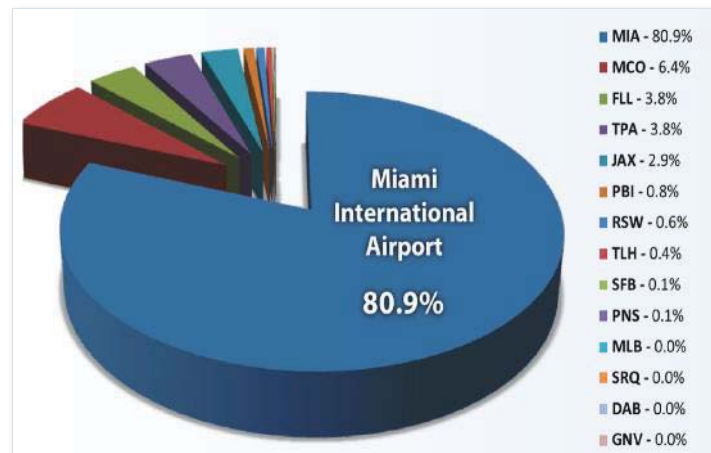
CURRENT APPLICATIONS

- » Office of Policy Planning
 - » Transportation System: Air Facilities – Passengers and Freight, 2013
- » Systems Planning Office
 - » Adopted SIS Criteria and Thresholds, 2010
- » Office of Freight, Logistics & Passenger Operations
 - » Florida Air Cargo System Plan Update, 2013

POTENTIAL APPLICATIONS

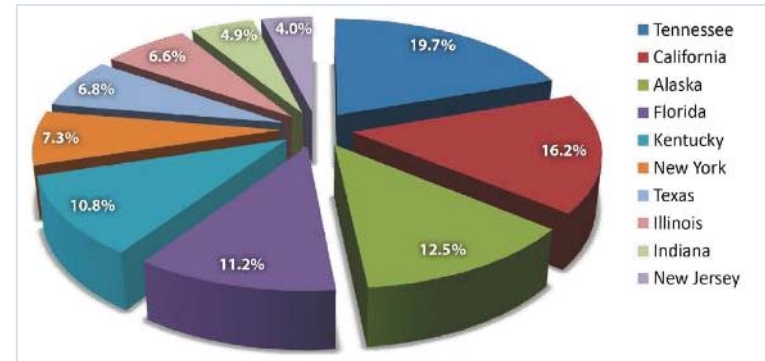
- » Freight Performance Measures
- » Safety Planning and Analysis
- » Regulation and Enforcement
- » Terminal and Border Access Planning
- » Multimodal Freight Modeling
- » Sustainable Transportation Investment
- » Freight Transportation and Land Use Planning

Actual Tonnage by Airport within Florida, 2011



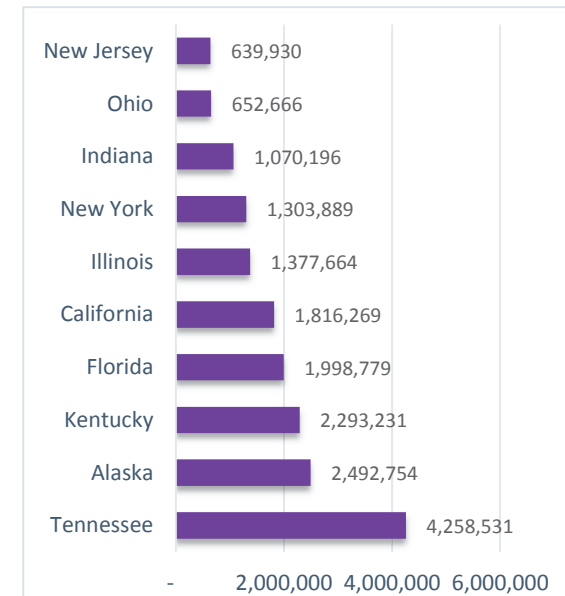
Source: Florida Air Cargo System Plan Update, 2012.

Top 10 Air Cargo Market Share, 2011



Source: Florida Air Cargo System Plan Update, 2012.

Top 10 Air Cargo States by Total Annual Tonnage, 2014



Source: RS&H, Inc.

Complexity Measure	Spatial Coverage	Commodity Coverage	Industry Coverage	Modal Coverage	Temporal Coverage	Collection Frequency/update	Accuracy	Access	Usability
Rating	●	○	○	◐	●	●	●	◐	●



SUMMARY

Air Carrier Statistics is a monthly data reported by certificated U.S. and foreign air carriers on passengers, freight and mail transported. The other indicators include aircraft type, service class, available capacity and seats, and aircraft hours ramp-to-ramp and airborne. There are 6 datasets:

- » T-100 Market - Domestic Carrier
- » T-100 Market - International Carrier
- » T-100 Market - All Carrier
- » T-100 Segment - Domestic Carrier
- » T-100 Segment- International Carrier
- » T-100 Segment - All Carrier

In market data, a passenger is "enplaned" and is counted only once as long as he/she remains on the same flight number. In segment data, a passenger is "transported" and is counted for each leg of the trip. The data was established under Intermodal Surface Transportation Efficiency Act of 1991 Section 6006.

MORE ABOUT THE DATA:

Developer: Bureau of Transportation Statistics

Update Frequency: Monthly

Geographical Coverage: U.S

Temporal coverage: 1990 - present

Geographical Resolution: Airport

Modal Coverage: Air

Data Format: CSV

Licensing Agreement: N/A

Acquisition Cost: N/A

Legal Reference: 49 CFR 111(c) (2)

Contact:

[FDOT TRANSTAT](http://www.fdot.com/transtat)
(850)-414-4848

CURRENT USERS

- » Florida Department of Transportation:
 - » Florida Aviation System Plan
- » U.S.Department of Transportation:
 - » U.S International Air Passenger and Freight Statistics
- » National Cooperative Freight Research Program Reports
- » Federal Aviation Administration:
 - » One of the data sources for FAA Database: Air Carrier Activity Information System (ACAIS)

POTENTIAL APPLICATIONS

- » Freight Performance Measures
- » Congestion Management
- » Traffic Operations/Services
- » Safety Planning and Analysis
- » Environmental Planning
- » Emergency Preparedness and Security Planning
- » Regulation and Enforcement
- » Demand Forecasting
- » Demand/Capacity analysis
- » Return on investment on infrastructure

Code	Description	Summary
FX	Federal Express Corporation	12,575,513,752
SX	United Parcel Service	7,736,997,469
SY	Atlas Air Inc.	1,498,607,686
DL	Delta Air Lines Inc.	1,042,336,072
UA	United Air Lines Inc.	925,012,179
AA	American Airlines Inc.	915,696,993
PO	Polar Air Cargo Airways	787,125,358
KE	Korean Air Lines Co. Ltd.	761,944,366
CX	Cathay Pacific Airways Ltd.	719,743,467
ABX	ABX Air Inc	698,195,276

T-100 Market Freight (pounds) for Major Air Carriers (2014)

Rank	Origin Airport	Summary
1	Miami International Airport	1806910612
2	Orlando International Airport	160176297
3	Fort Lauderdale–Hollywood International Airport	95372540
4	Tampa International Airport	89338692
5	Jacksonville International Airport	75794736
6	Palm Beach International Airport	22641689
7	St. Pete–Clearwater International Airport	17110950
8	Southwest Florida International Airport	12234392
9	Tallahassee International Airport	8988681
10	Pensacola International Airport	4375565
11	Ocala International Airport	562463
12	Orlando Sanford International Airport	433630
13	Key West International Airport	284359
14	Sarasota–Bradenton International Airport	267901
15	Florida Keys Marathon Airport	202186
16	Melbourne International Airport	175650
17	Daytona Beach International Airport	127948
18	Northwest Florida Beaches International Airport	35506
19	Cecil Airport	15000
20	Destin - Fort Walton Beach Airport	11473

T-100 Market Freight (pounds) for Major Florida Origin Airports (2014)

Rank	Destination Airport	Summary
1	Miami International Airport	2280943532
2	Orlando International Airport	190955443
3	Fort Lauderdale–Hollywood International Airport	100449098
4	Tampa International Airport	95686454
5	Jacksonville International Airport	75278136
6	Palm Beach International Airport	31319811
7	St. Pete–Clearwater International Airport	24949756
8	Southwest Florida International Airport	23287891
9	Tallahassee International Airport	10458790
10	Pensacola International Airport	8646923
11	Orlando Sanford International Airport	881005
12	Key West International Airport	713527
13	Florida Keys Marathon Airport	368512
14	Melbourne International Airport	194812
15	Sarasota–Bradenton International Airport	181217
16	Ocala International Airport	175304
17	Daytona Beach International Airport	164148
18	Space Coast Regional Airport	121440
19	Northwest Florida Beaches International Airport	59601
20	Gainesville Regional Airport	36583

T-100 Market Freight (pounds) for Major Florida Destination Airports (2014)

Complexity Measure	Spatial Coverage	Commodity Coverage	Industry Coverage	Modal Coverage	Temporal Coverage	Collection Frequency/ update	Accuracy	Access	Usability
Rating	●	○	○	◐	●	●	●	●	●



SUMMARY

The Federal Aviation Administration (FAA) conducts research to ensure efficient and safe commercial and general aviation. FAA also compiles information on various datasets including Accident & Incident Reports, Aviation Data & Statistics, Commercial Space Data, Forecast Data, Passenger & Cargo Data, Safety, and Funding & Grant Data. The Passenger & Cargo Data provides information on all cargo airports including location, service level, hub size, and total annual landed weight. FAA provides archived historical data from 2000 to the present and All-Cargo reporting which includes reports on aircraft operations dedicated to the transport of cargo.

MORE ABOUT THE DATA:

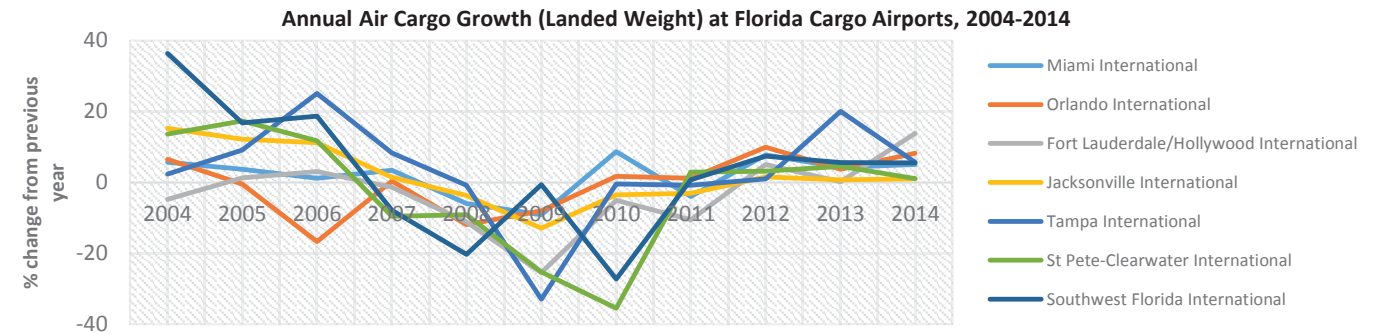
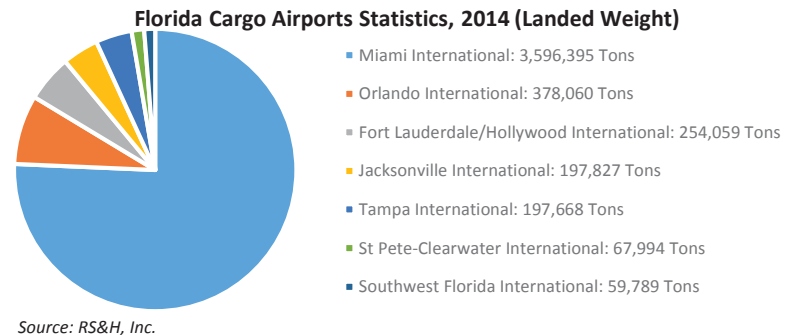
Developer: [Federal Aviation Administration](#)
Update Frequency: Annually
Latest Year Available: 2014
Temporal Coverage: Annual
Geographical Coverage: National
Geographical Resolution: Airports
Modal Coverage: Air
Data Format: MS Excel, PDF
Licensing Agreement: N/A
Acquisition Cost: Publicly Available
Legal Reference: 14 USC
Contact:
[FDOT TRANSTAT](#)
 (850) 414-4848

CURRENT APPLICATIONS

- » Aviation and Spaceports Office: Projects & Publications

POTENTIAL APPLICATIONS

- » Freight Performance Measures
- » Environmental Planning
- » Emergency Preparedness and Security Planning
- » Regulation and Enforcement
- » Terminal and Border Access Planning
- » Sustainable Transportation Investment
- » Freight Transportation and Land Use Planning



Top 10 US Cargo Airports by Landed Weight, 2014

Rank	ST	Airport Name	City	Service Level	Hub	2014 Landed Weight (lbs.)
1	TN	Memphis International	Memphis	P	M	22,774,592,279
2	AK	Ted Stevens Anchorage International	Anchorage	P	M	15,867,941,046
3	KY	Louisville International-Standiford Field	Louisville	P	S	11,568,369,154
4	IL	Chicago O'Hare International	Chicago	P	L	7,541,411,779
5	FL	Miami International	Miami	P	L	7,192,790,882
6	IN	Indianapolis International	Indianapolis	P	M	5,355,984,715
7	CA	Los Angeles International	Los Angeles	P	L	4,297,359,912
8	KY	Cincinnati/Northern Kentucky International	Greater Cincinnati International Airport	P	M	3,644,404,568
9	NY	John F Kennedy International	New York	P	L	3,170,996,874
10	TX	Dallas/Fort Worth International	Fort Worth	P	L	3,140,733,270

Source: RS&H, Inc.

Complexity Measure	Spatial Coverage	Commodity Coverage	Industry Coverage	Modal Coverage	Temporal Coverage	Collection Frequency/update	Accuracy	Access	Usability
Rating	●	○	○	●	●	●	●	●	●



SUMMARY

Flightware offers flight tracking data for both private and commercial air traffic, airport status for air travelers, as well as other Automatic Dependent Surveillance – Broadcast (ADS-B) related data and statistics. It combines over 100 real-time worldwide data and integrates them with the web-based interface to provide its flight tracking application. The data include ADS-B Flight Position Data Feed, Fixed Base Operator (FBO) Database, FBO Fuel Prices Data, Airport Database, Air Operations/Airline Database, and METAR (weather information) Reports.

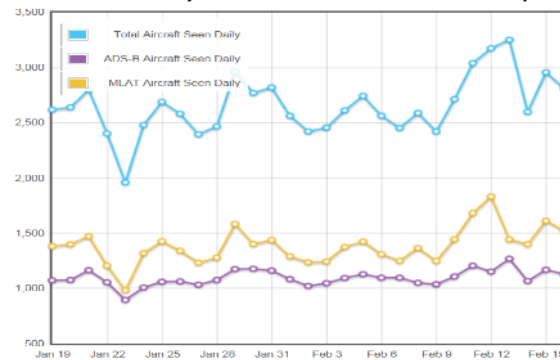
MORE ABOUT THE DATA:

- Developer:** [Flightware](#)
- Update Frequency:** Real time data
- Latest Year Available:** 2016
- Temporal Coverage:** Real time data
- Geographical Coverage:** Worldwide
- Geographical Resolution:** Airports, Aircrafts
- Modal Coverage:** Air
- Data Format:** CSV, XML, JSON, TSV
- Licensing Agreement:** Required
- Acquisition Cost:** Variable
- Contact:**
[FDOT TRANSTAT](#)
 (850) 414-4848

POTENTIAL APPLICATIONS

- » Freight Performance Measures
- » Safety Planning and Analysis
- » Regulation and Enforcement
- » Terminal and Border Access Planning
- » Multimodal Freight Modeling
- » Sustainable Transportation Investment
- » Freight Transportation and Land Use Planning

Distribution of Daily Aircraft Seen in Orlando Intl. Airport, 2016



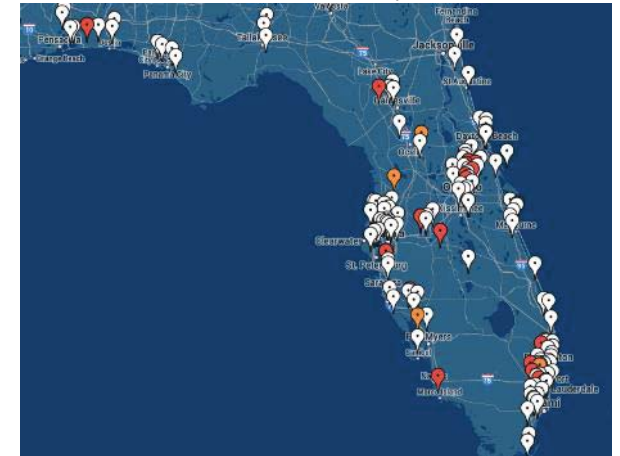
Source: <http://flightware.com/adsb/stats/>

Misery Map (Delayed Flights in Major Airports), April 17th 2016



Source: <http://flightware.com/miserymap/all/1460995200>

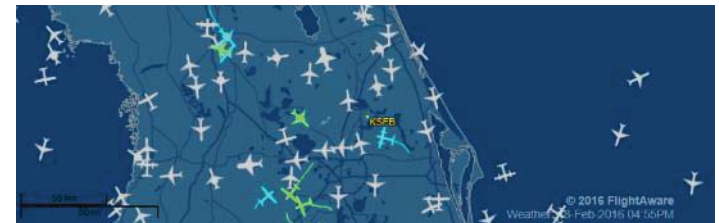
Active ADS-B sites in Florida, 2016



Legend: SBS3 PlanePlotter FlightFeeder FlightFeeder for Android PiAware Radarcape

Source: <http://flightware.com/adsb/coverage>

Snapshot of Arrival and Departure Flights in Orlando-Sanford Intl. Airport, 2016



ARRIVALS (HSB)					DEPARTURES (HSB)				
Ident	Type	From	Depart	Arrive	Ident	Type	To	Depart	Arrive
CONN438	SRJ0	Orlando Sanford Int'l (OSF)	10:35w est	11:35a est	CONN437	SRJ0	Labelled Under Flight (0:0)	11:35a est	12:15p est
CONN440	SRJ0	Orlando Sanford Int'l (OSF)	10:50a est	11:10a est	CONN431	SRJ0	Windsor (CGR)	11:25a est	01:40p est
CONN442	SRJ0	Orlando Sanford Int'l (OSF)	11:15a est	11:15a est	CONN437	SRJ0	Orlando Sanford Int'l (OSF)	11:15a est	11:15a est
CONN441	SRJ0	Orlando Sanford Int'l (OSF)	09:25w est	10:58a est	CONN437	SRJ0	Orlando Sanford Int'l (OSF)	11:15a est	11:45a est
HAZ489	LAL	Dorhan Rgn (DOR)	09:27a est	10:30a est	CONN437	SRJ0	Orlando Sanford Int'l (OSF)	11:05a est	12:10p est
CONN437	SRJ0	Orlando Sanford Int'l (OSF)	09:41a est	10:17a est	CONN441	SRJ0	Orlando Sanford Int'l (OSF)	10:57a est	12:00p est
CONN438	SRJ0	Harry T Hines (HTH)	09:41a est	10:00a est	CONN444	SRJ0	Ocala Int'l (OCF)	10:49a est	11:24a est
HAZ445	G41	Taken Field (TFL)	07:54a est	09:30a est	CONN444	SRJ0	Ocala Int'l (OCF)	10:49a est	11:55a est
CONN444	SRJ0	Orlando Sanford Int'l (OSF)	09:07a est	09:02a est	CONN438	SRJ0	Orlando Sanford Int'l (OSF)	10:30a est	11:24a est
HAZ411	SRJ0	Orlando Sanford Int'l (OSF)	09:12a est	09:30a est	CONN438	SRJ0	Orlando Sanford Int'l (OSF)	10:30a est	11:10a est
CONN437	SRJ0	Orlando Sanford Int'l (OSF)	09:41a est	09:47a est	CONN438	SRJ0	Windsor Int'l (WSP)	09:30a est	10:00a est

Source: <http://flightware.com/adsb/stats/>

Complexity Measure	Spatial Coverage	Commodity Coverage	Industry Coverage	Modal Coverage	Temporal Coverage	Collection Frequency/update	Accuracy	Access	Usability
Rating	●	○	○	◐	●	◐	●	◐	◐



SUMMARY

The Official Airline Guide (OAG) is an air travel intelligence reference that provides data on airline schedules, cargo and aviation analytics. OAG's databases include cargo flight information updated daily, worldwide cargo schedules from freighter aircraft to road feeder services, origin/destination information, flight details, airline code, airport, and aircraft type. Furthermore, OAG offers a comprehensive reference guide for cargo flights that is updated monthly to provide visibility of all flight options available. Data can be customized to specifically contain the parameters desired by the user.

MORE ABOUT THE DATA:

Developer: [Official Airline Guide](#)

Update Frequency: Daily

Latest Year Available: 2015

Temporal Coverage: Up-to-the-minute

Geographical Coverage: Worldwide

Geographical Resolution: Airport

Modal Coverage: Air

Data Format: Web based, XML, Online Server with secure access, Printed

Licensing Agreement: Required

Acquisition Cost: Variable

Contact:

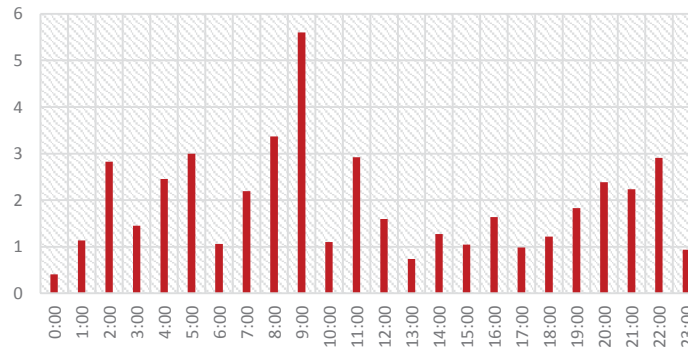
[FDOT Transportation Statistics Office](#)

(850) 414-4848

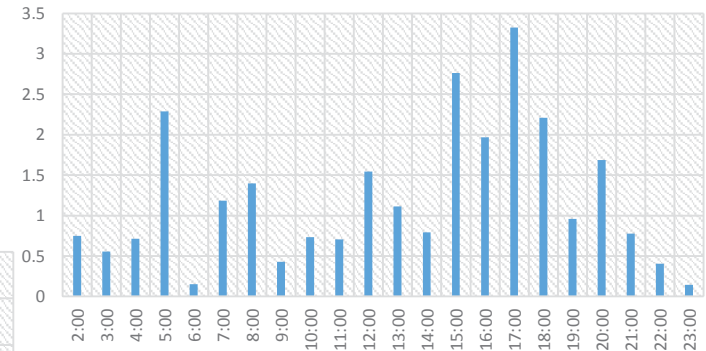
POTENTIAL APPLICATIONS

- » Freight Performance Measures
- » Traffic Operations/Services
- » Safety Planning and Analysis
- » Emergency Preparedness and Security Planning
- » Regulation and Enforcement
- » Terminal and Border Access Planning
- » Sustainable Transportation Investment
- » Freight Transportation and Land Use Planning

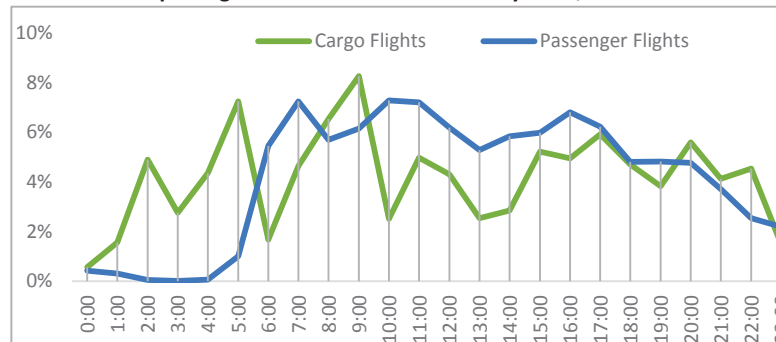
Average Daily Cargo Flights Departed from Miami Intl. Airport by Hour, 2013*



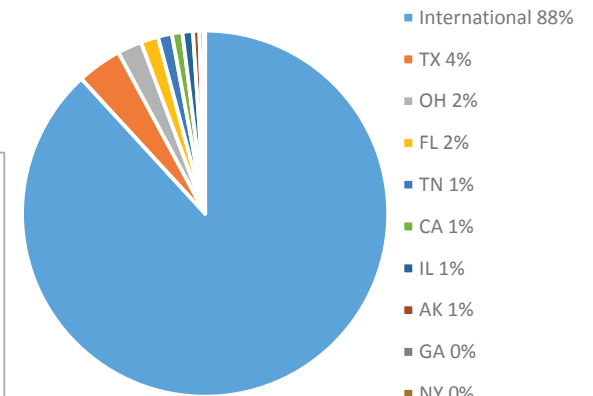
Average Number of Daily Cargo Flights Arrived in Miami International by Hour, 2013*



Comparison of Average Daily Cargo and Passenger Flights Arriving and Departing from Miami International by Hour, 2013*



Average Daily Air Cargo Destination Market Share from Miami International, 2013*



* Source: FDOT Aviation Office

Complexity Measure	Spatial Coverage	Commodity Coverage	Industry Coverage	Modal Coverage	Temporal Coverage	Collection Frequency/update	Accuracy	Access	Usability
Rating	●	○	○	◐	●	●	●	◐	●

