

FREIGHT AND LOGISTICS OVERVIEW

FEBRUARY 2021

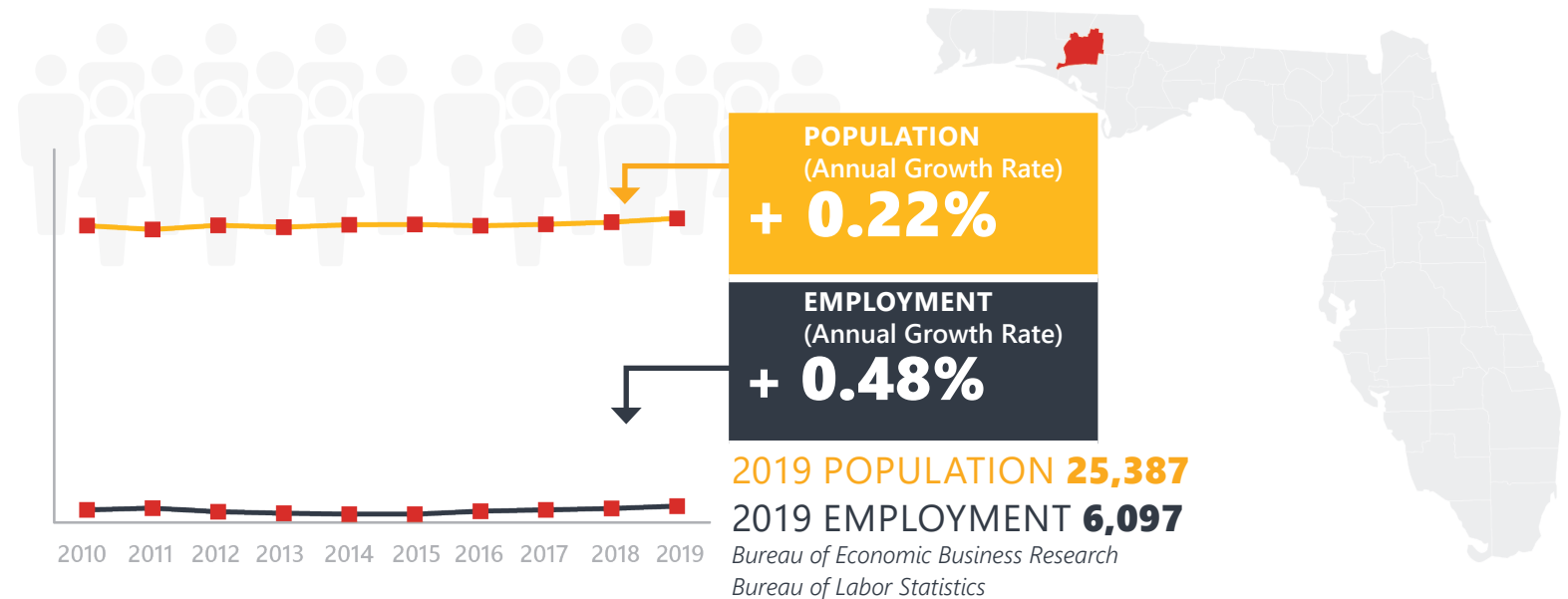
WASHINGTON COUNTY



Mission: The department will provide a safe transportation system that ensures the mobility of people and goods, enhances economic prosperity, and preserves the quality of our environment and communities.

WASHINGTON COUNTY HIGHLIGHTS

"FROM WATERFALLS TO WOLVES"		AREA (SQ . MILES)	616
COUNTY SEAT	CHIPLEY	LARGEST CITY (SIZE)	CHIPLEY



LARGEST INDUSTRY SECTORS BY EMPLOYMENT (2019)

Office of Economic and Demographic Research



FASTEST GROWING INDUSTRIES (2010-2019)

PROFESSIONAL AND BUSINESS SERVICES	JOBS ADDED	458
LEISURE AND HOSPITALITY		119
OTHER SERVICES		94
TRADE, TRANSPORTATION, AND UTILITIES		45
EDUCATION AND HEALTH SERVICES		31

Bureau of Labor Statistics

DID YOU KNOW?

Washington is a partially dry county. Alcohol cannot be bought or sold on Sunday within the city limits of Chipley. Vernon, Ebro and Wausau are excluded from this ordinance.

The Town of Wausau is home to more possums than humans and is the 'Possum Capital of the World'. To commemorate this fact, Wausau erected a Possum monument in 1982 and also holds a Possum Festival in August of each year.

The county is home to the Seacrest Wolf Preserve, the largest wolf preserve in the lower 48 states. The preserve offers one of the rarest opportunities in the world to connect in nature with wolves.

COMMODITY FLOW HIGHLIGHTS



IMPORTS

WITHIN COUNTY

EXPORTS

2018

2045

2018

2045

2018

2045

Tonnage:	0.24 M	0.29 M	747	1132	0.18 M	0.41 M
Value:	\$ 0.15 B	\$ 0.19 B	\$ 723.56 K	\$ 518.72 K	\$ 87.67 M	\$ 147.05 M



TOP COMMODITY by Tonnage, 2018



Nonmetallic Minerals	95,462
Petroleum or Coal Products	34,997
Lumber or Wood Products	27,977
Clay, Concrete, Glass, Stone	26,890
Warehouse, Distribution Center and Drayage Movements	26,586

Lumber or Wood Products	110,300
Farm Products	27,270
Food or Kindred Products	20,482
Waste or Scrap Materials	13,074
Forest Products	5,076



TOP COMMODITY by Value, 2018

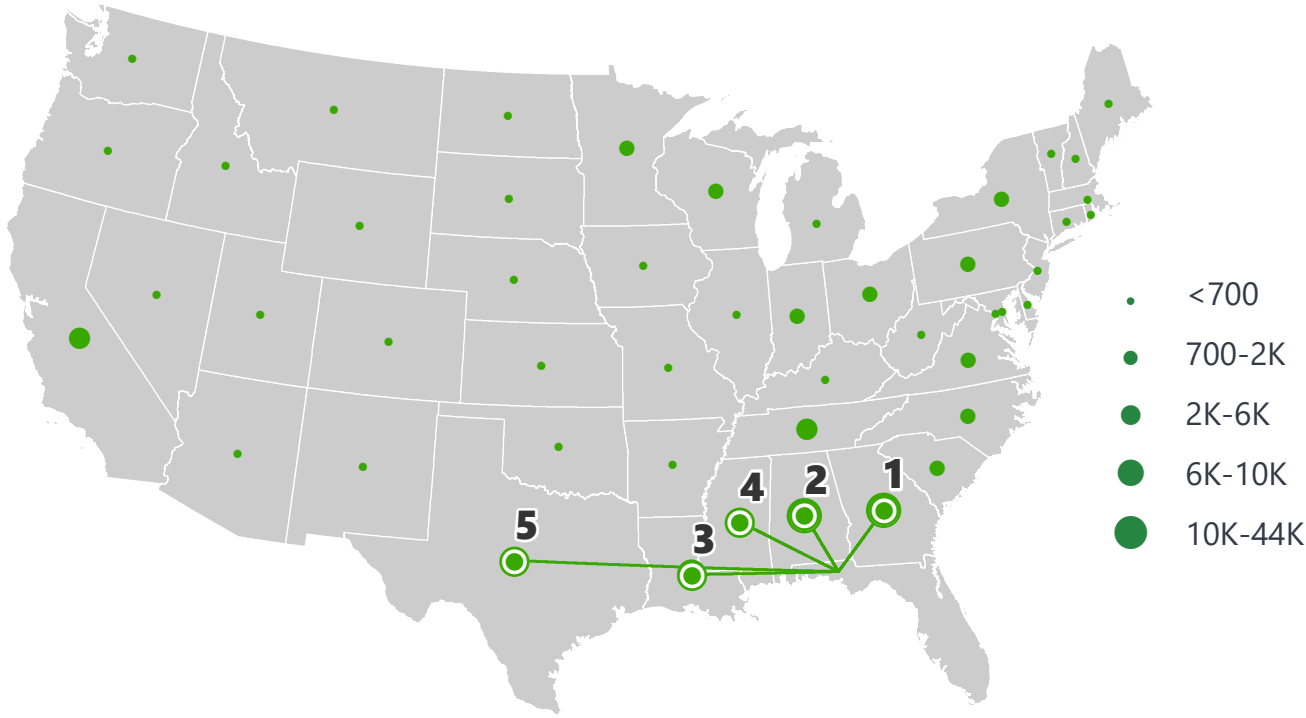


Warehouse, Distribution Center and Drayage Movements	\$ 32,587,060
Textile Mill Products	\$ 21,092,402
Petroleum or Coal Products	\$ 19,366,072
Food or Kindred Products	\$ 17,780,875
Transportation Equipment	\$ 14,773,746

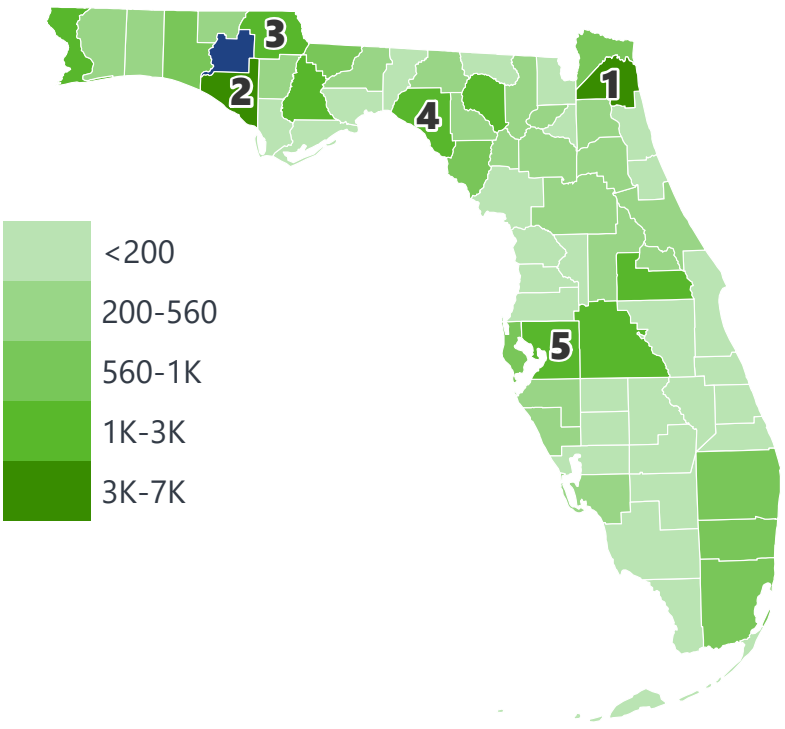
Lumber or Wood Products	\$ 27,496,353
Apparel or Related Products	\$ 23,487,348
Farm Products	\$ 10,030,688
Food or Kindred Products	\$ 8,352,966
Forest Products	\$ 6,670,908

WASHINGTON COUNTY EXPORTS AND IMPORTS

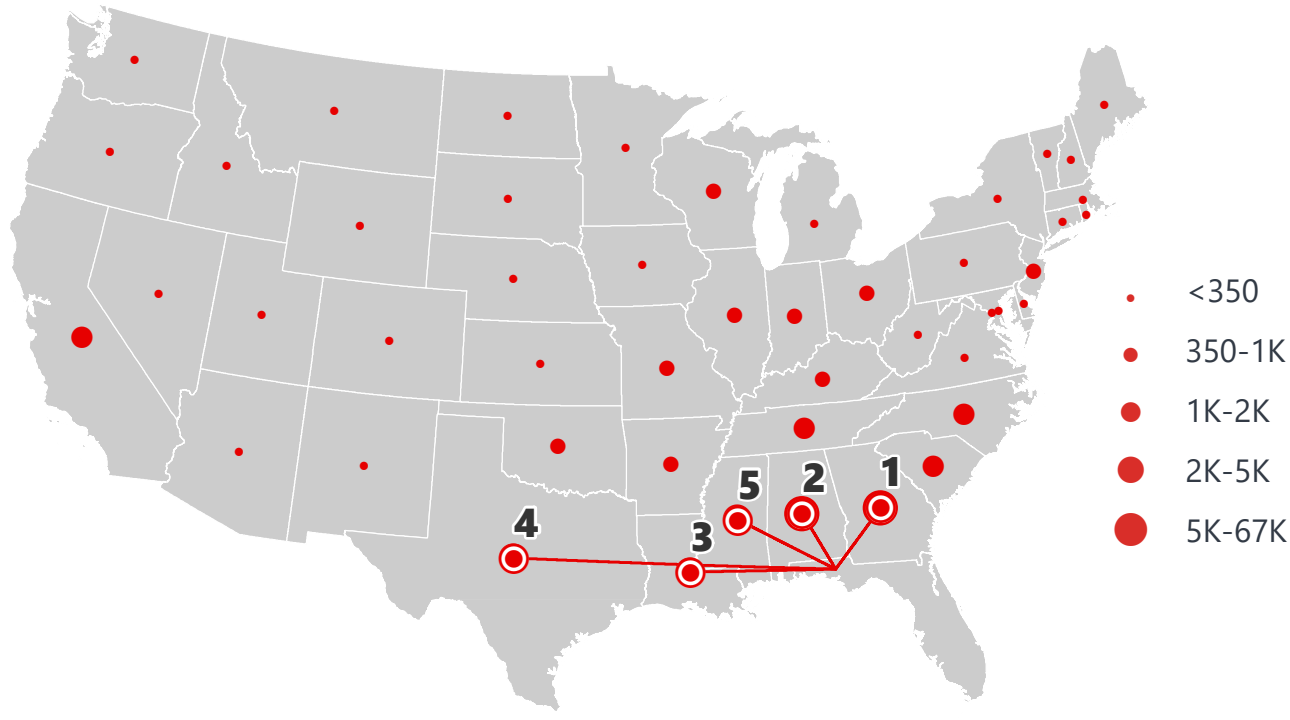
DOMESTIC EXPORTS (TONS)



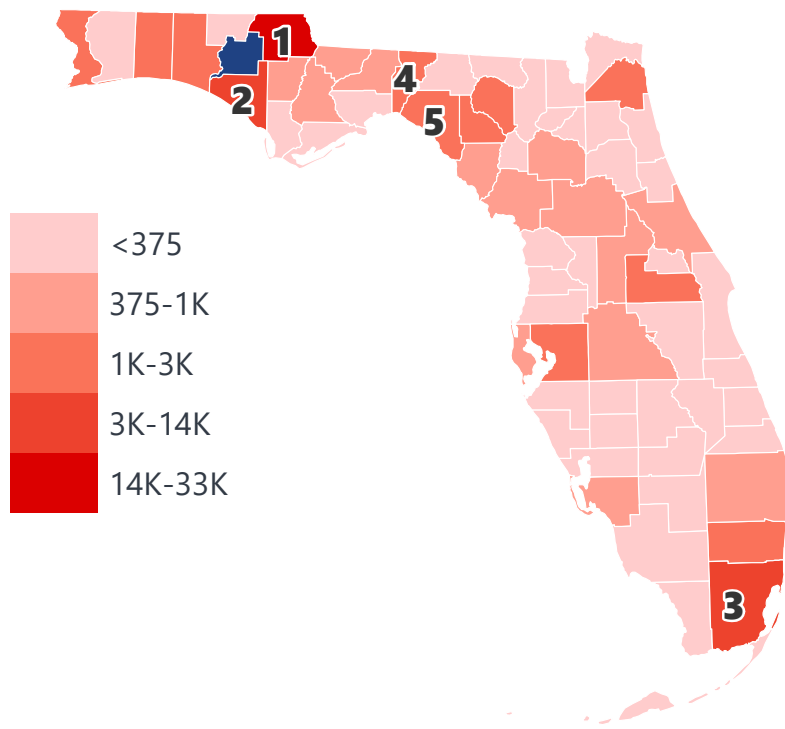
INTRASTATE EXPORTS (TONS)



DOMESTIC IMPORTS (TONS)



INTRASTATE IMPORTS (TONS)



DOMESTIC EXPORTS (TONNAGE)

1	Georgia	43,818
2	Alabama	41,905
3	Louisiana	10,078
4	Mississippi	6,358
5	Texas	5,314

INTRASTATE EXPORTS (TONNAGE)

1	Duval	6,592
2	Bay	5,805
3	Jackson	2,974
4	Taylor	2,917
5	Hillsborough	2,116

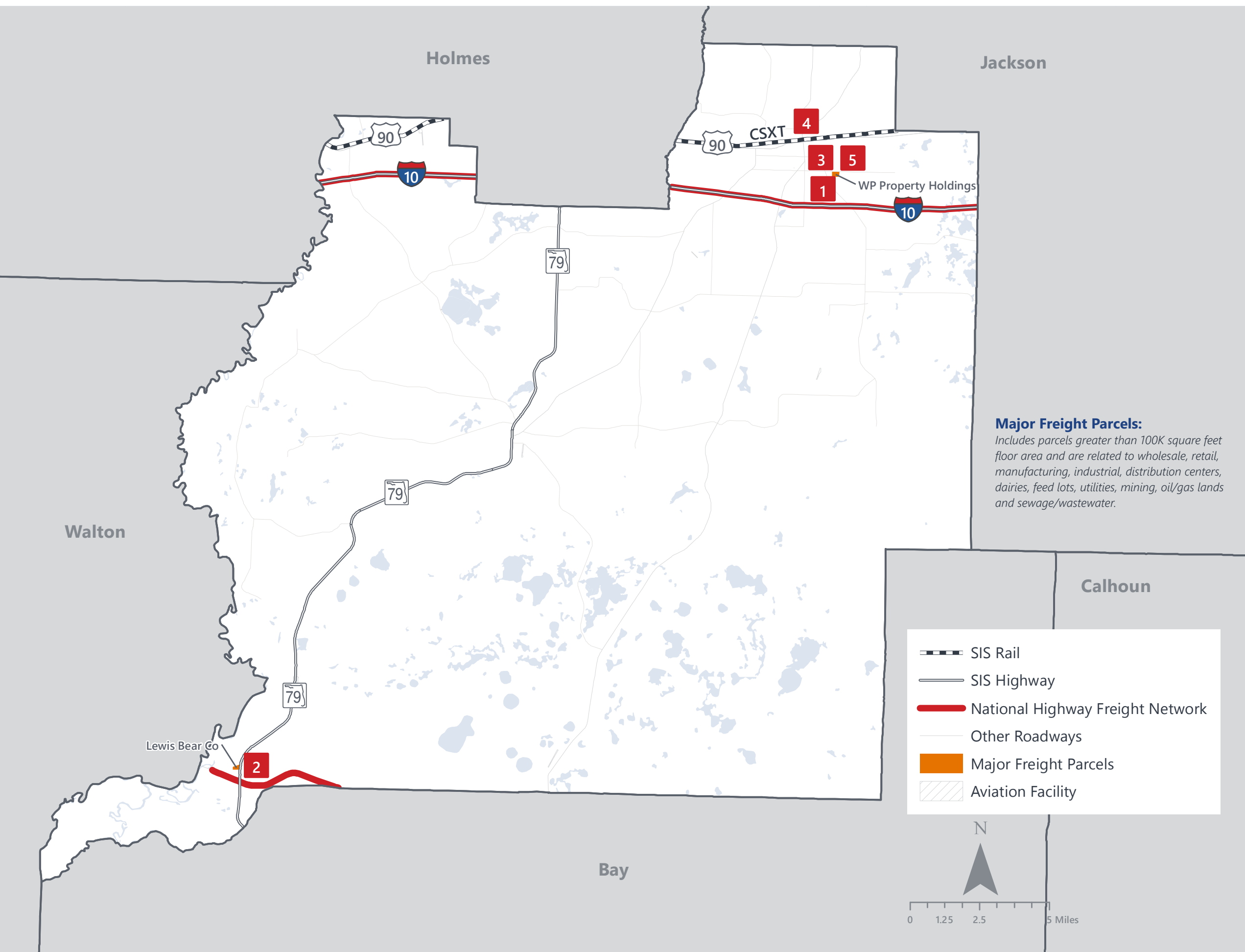
DOMESTIC IMPORTS (TONNAGE)

1	Georgia	66,415
2	Alabama	47,042
3	Louisiana	5,579
4	Texas	4,714
5	Mississippi	3,523

INTRASTATE IMPORTS (TONNAGE)

1	Jackson	32,168
2	Bay	14,090
3	Miami-Dade	8,671
4	Jefferson	3,164
5	Taylor	3,137

WASHINGTON COUNTY FREIGHT INFRASTRUCTURE



LARGEST FREIGHT EMPLOYERS

1	WestPoint Home	200-300
2	Lewis Bear Co.	100-200
3	UPS	50-100
4	USPS	0-50
5	Hoover Mill	0-50

MAJOR FREIGHT LAND USES

1.3 M SQ.FT Floor Area

44.20%	Light manufacturing
39.63%	Warehousing and distribution centers
8.91%	Utilities
5.61%	Lumber yards, sawmills, planing mills
1.65%	Wholesale outlets, produce houses, manufacturing outlets

48.7 M SQ.FT LAND AREA

51.56%	Sewage disposal and waste land
23.22%	Utilities
19.26%	Warehousing and distribution centers
5.30%	Light manufacturing
0.36%	Lumber yards, sawmills, planing mills

MAJOR COUNTY COMMODITIES



IMPORTS



TOP COMMODITY by Tonnage, 2018 (relative to Florida)

FL Rank	Commodity	% Florida Share
21	Textile Mill Products	0.73%
37	Forest Products	0.48%
47	Lumber or Wood Products	0.21%
53	Nonmetallic Minerals	0.08%
54	Clay, Concrete, Glass, Stone	0.06%

EXPORTS



FL Rank	Commodity	% Florida Share
9	Forest Products	2.64%
26	Lumber or Wood Products	1.18%
6	Apparel or Related Products	0.68%
47	Farm Products	0.20%
34	Food or Kindred Products	0.13%

TOP COMMODITY by Value, 2018 (relative to Florida)

FL Rank	Commodity	% Florida Share
19	Textile Mill Products	0.70%
35	Forest Products	0.57%
52	Lumber or Wood Products	0.11%
42	Leather or Leather Products	0.07%
42	Apparel or Related Products	0.06%

FL Rank	Commodity	% Florida Share
9	Forest Products	2.70%
40	Lumber or Wood Products	0.55%
6	Apparel or Related Products	0.33%
48	Farm Products	0.11%
44	Food or Kindred Products	0.05%



TRANSPORTATION STATISTICS AND FREIGHT MOVEMENT BY MODE



150 K | Daily Truck Miles Traveled
1.16 | Planning Time Index
1,271 | Public Roadway Mileage



32 Miles | Distance from closest seaport
(Port of Panama City)



12.57 | Class I Mainline Miles (CSX)
- Class II Mainline Miles
- Class III Mainline Miles



32 Miles | Distance from closest airport
(Northwest Florida - Beaches International)

FLORIDA HIGHLIGHTS

3rd most populous US State

\$1T Gross Domestic Product

4th Largest US Economy and **17th Largest** Economy in World

Nation's **3rd largest** workforce

1 in 5 U.S. exporters are located in Florida

\$153B International Trade

1.76M jobs supported by Trade, Transportation and Utilities industry sector

1.25M jobs supported by Leisure and Hospitality industry sector

131M annual visitors

CAPITAL **TALLAHASSEE**

AREA
(SQ. MILES) **53,624**

LARGEST
CITY (SIZE) **JACKSONVILLE**

POPULATION
(2019) **21,208,589**

ANNUAL POP
GROWTH RATE
(2010-2019) **1.4%**

EMPLOYMENT
(2019) **8,884,065**

ANNUAL EMP
GROWTH RATE
(2010-2019) **2.8%**

*Bureau of Economic Business Research,
Bureau of Labor Statistics*

DOMESTIC IMPORTS

1	GEORGIA	\$44B
2	CALIFORNIA	\$29B
3	TEXAS	\$26B
4	ALABAMA	\$18B
5	ILLINOIS	\$18B

DOMESTIC EXPORTS

1	GEORGIA	\$22B
2	TEXAS	\$19B
3	CALIFORNIA	\$15B
4	NORTH CAROLINA	\$12B
5	NEW YORK	\$10B

INTERNATIONAL IMPORTS

1	CHINA	\$9.5B
2	JAPAN	\$6.5B
3	BRAZIL	\$6.4B
4	MEXICO	\$4.5B
5	CHILE	\$3.7B

INTERNATIONAL EXPORTS

1	BRAZIL	\$13.4B
2	COLOMBIA	\$4.2B
3	ARGENTINA	\$3.6B
4	DOMINICAN REPUBLIC	\$3.1B
5	CHILE	\$3B

TRANSPORTATION STATISTICS AND FREIGHT MOVEMENT BY MODE



83%
TONNAGE

71%
VALUE

123,104 Public roadway mileage
12,130 State Highway System (SHS) mileage
30.7M Daily truck miles traveled on SHS
98 Public truck parking facilities



3.5%
TONNAGE

2.9%
VALUE

15 Deepwater seaports
4.1M Twenty-foot equivalent units (TEUs)
16.8M Annual cruise passengers



6.7%
TONNAGE

1.8%
VALUE

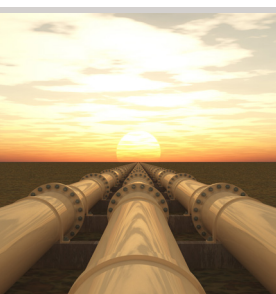
2,936 Miles of roads
6.9M Annual rail passenger traffic



0.1%
TONNAGE

5.4%
VALUE

129 Public use airports
20 Commercial service airports
2 Active spaceports



3.6%
TONNAGE

1%
VALUE

5,899 Miles of gas transmission and hazardous liquid pipelines



3.1%
TONNAGE

17.9%
VALUE

Includes shipments by multiple modes and by parcel delivery services, U.S. Postal Service, or couriers (capped at 150 pounds). This category is not limited to containerized or trailer-on-flatcar shipments.

FLORIDA COMMODITY FLOWS (2018-2045)



IMPORTS



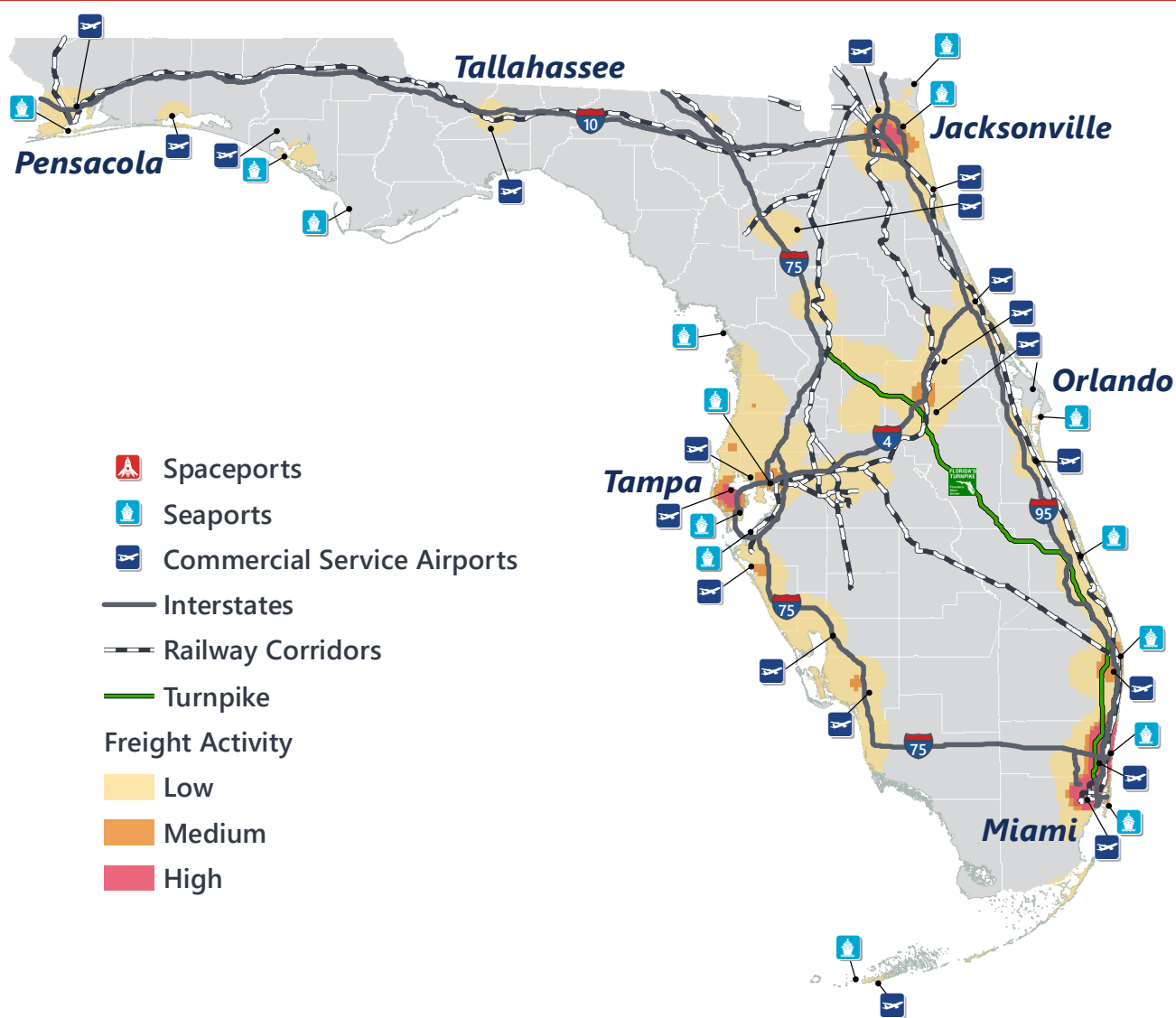
WITHIN FL



EXPORTS

	2018	2045	2018	2045	2018	2045
TONNAGE	142M	190M	656M	761M	57M	103M
VALUE	\$321B	\$690B	\$402B	\$844B	\$180B	\$606B

Freight Analysis Framework (FAF) 4.5.1.



Rickey Fitzgerald
Manager, Freight & Multimodal Operations
 Florida Department of Transportation
 605 Suwannee Street, Tallahassee, FL 32399
 Rickey.Fitzgerald@dot.state.fl.us
 850.414.4702