

# FREIGHT AND LOGISTICS OVERVIEW

FEBRUARY 2021

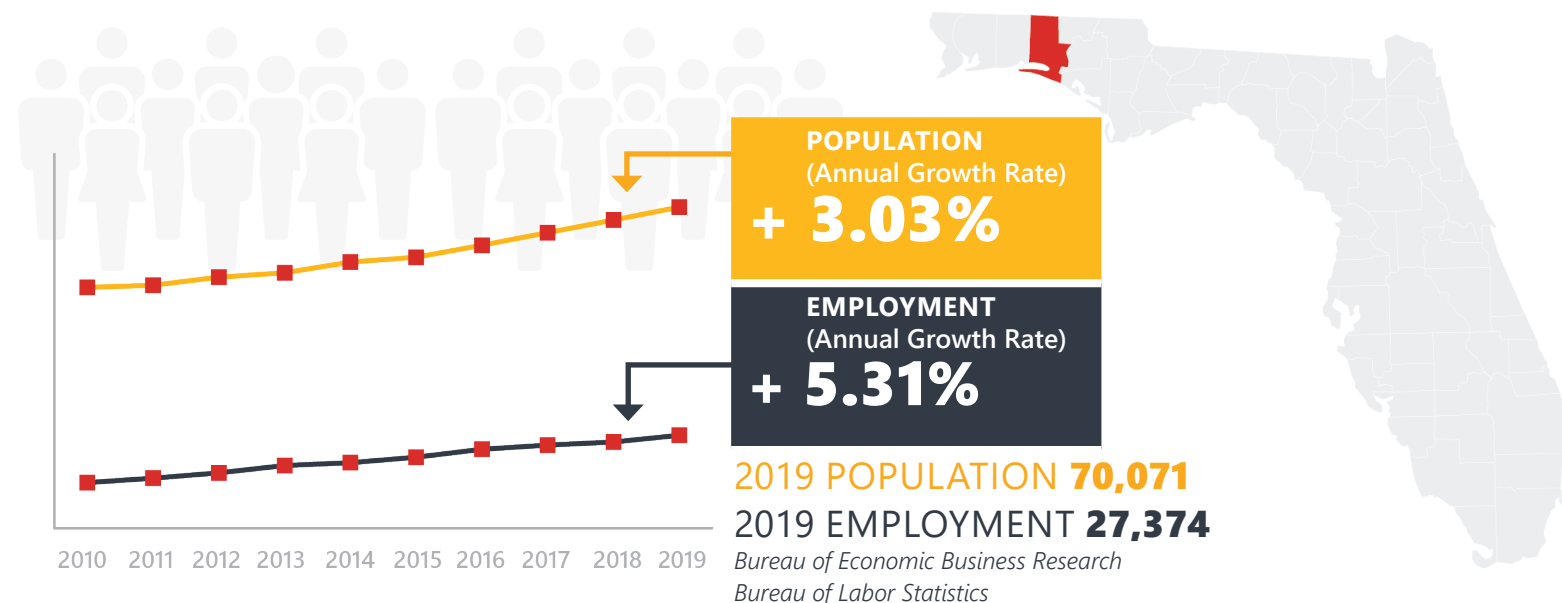
# WALTON COUNTY



*Mission: The department will provide a safe transportation system that ensures the mobility of people and goods, enhances economic prosperity, and preserves the quality of our environment and communities.*

# WALTON COUNTY HIGHLIGHTS

"PRIDE. PRESERVATION. CONSERVATION."		AREA (SQ . MILES)	1,238
COUNTY SEAT	DEFUNIAK SPRINGS	LARGEST CITY (SIZE)	DEFUNIAK SPRINGS

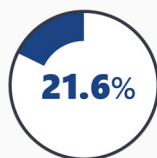


## LARGEST INDUSTRY SECTORS BY EMPLOYMENT (2019)

Office of Economic and Demographic Research



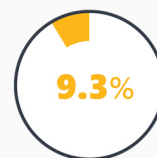
Leisure & hospitality



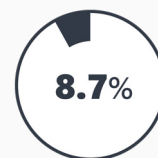
Trade, transportation & utilities



Education & health services



Professional & business services



Construction

## FASTEST GROWING INDUSTRIES (2010-2019)

LEISURE AND HOSPITALITY	JOBS ADDED	2,811
TRADE, TRANSPORTATION, AND UTILITIES		2,103
PROFESSIONAL AND BUSINESS SERVICES		1,157
FINANCIAL ACTIVITIES		921
CONSTRUCTION		756

Bureau of Labor Statistics

## DID YOU KNOW?

Walton County is one of Florida's fastest growing counties. It boasts some of the most beautiful beaches in the world, including 16 certified Blue Wave Beaches.

Walton County has 15 rare coastal dune lakes. Coastal dune lakes are a gorgeous exotic phenomenon found in very few places in the world, such as Madagascar, New Zealand, and parts of the Pacific Northwest.

At 345 feet above mean sea level, Britton Hill is Florida's highest natural point – and the lowest "high point" in the United States.



# COMMODITY FLOW HIGHLIGHTS



## IMPORTS

## WITHIN COUNTY

## EXPORTS

	2018	2045	2018	2045	2018	2045
Tonnage:	1.36 M	1.58 M	21.7 K	23.44 K	1.02 M	1.35 M
Value:	\$ 0.71 B	\$ 0.91 B	\$ 4.6 M	\$ 8.1 M	\$ 0.26 B	\$ 0.57 B



### TOP COMMODITY by Tonnage, 2018

Nonmetallic Minerals	508,031
Petroleum or Coal Products	402,145
Warehouse, Distribution Center and Drayage Movements	149,806
Clay, Concrete, Glass, Stone	145,091
Food or Kindred Products	58,313



Petroleum or Coal Products	490,482
Clay, Concrete, Glass, Stone	182,068
Waste or Scrap Materials	110,526
Lumber or Wood Products	100,942
Nonmetallic Minerals	61,524



### TOP COMMODITY by Value, 2018

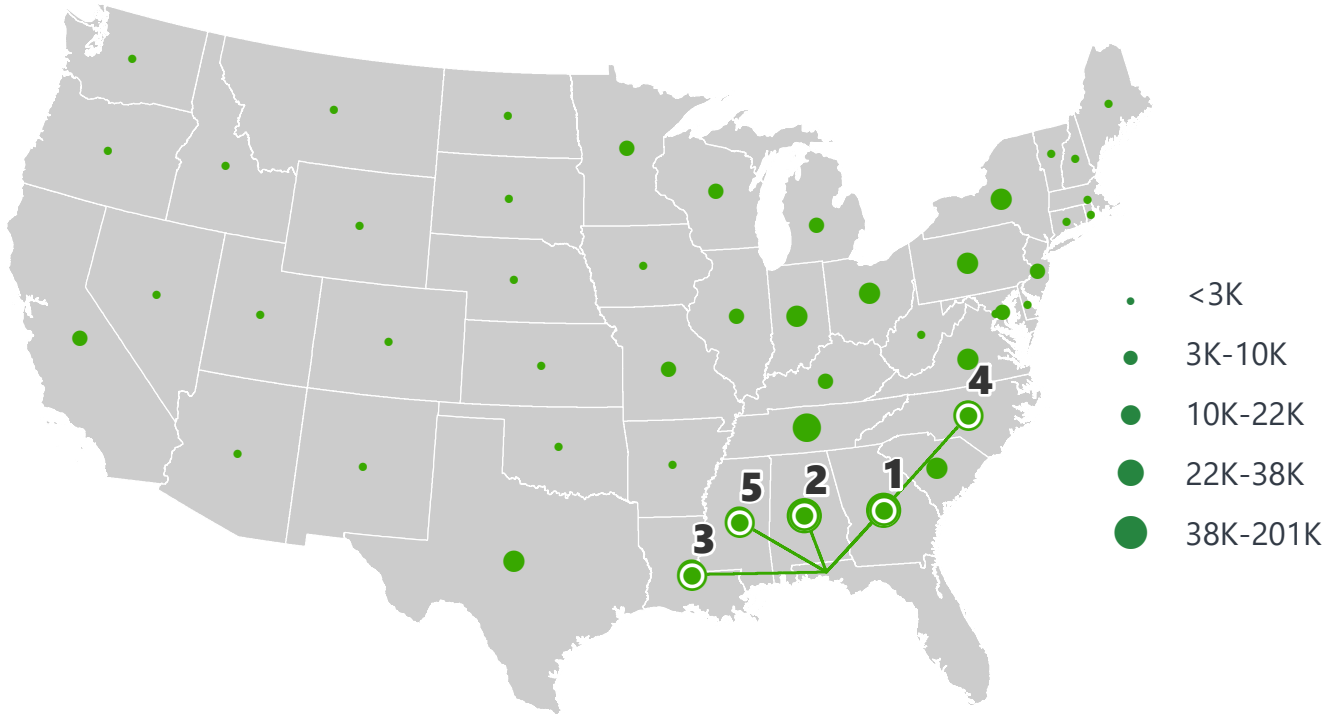
Petroleum or Coal Products	\$ 264,639,295
Warehouse, Distribution Center and Drayage Movements	\$ 183,612,698
Transportation Equipment	\$ 69,690,676
Food or Kindred Products	\$ 57,548,214
Lumber or Wood Products	\$ 26,786,544



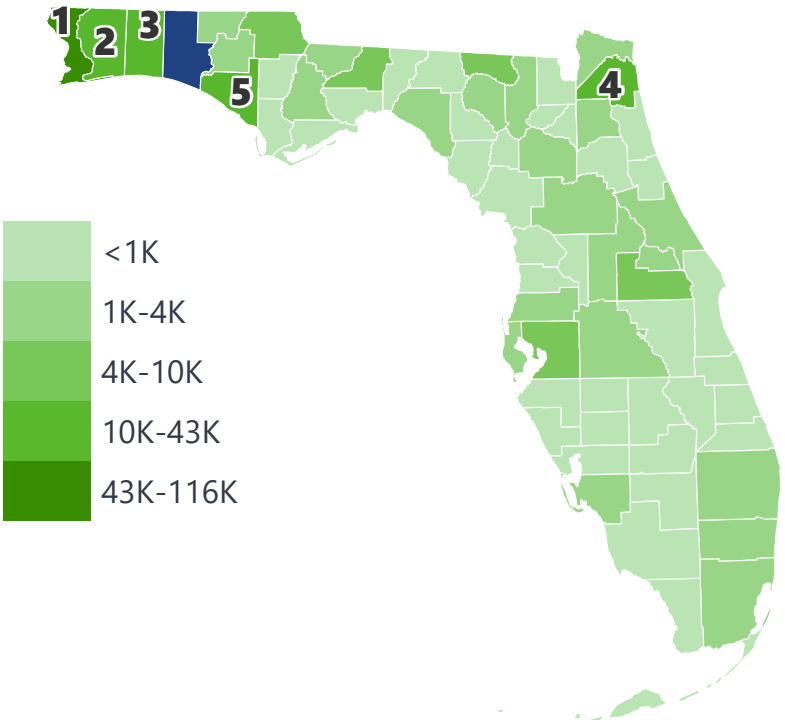
Petroleum or Coal Products	\$ 75,461,596
Farm Products	\$ 51,561,279
Lumber or Wood Products	\$ 50,299,813
Waste or Scrap Materials	\$ 28,084,528
Clay, Concrete, Glass, Stone	\$ 20,737,641

# WALTON COUNTY EXPORTS AND IMPORTS

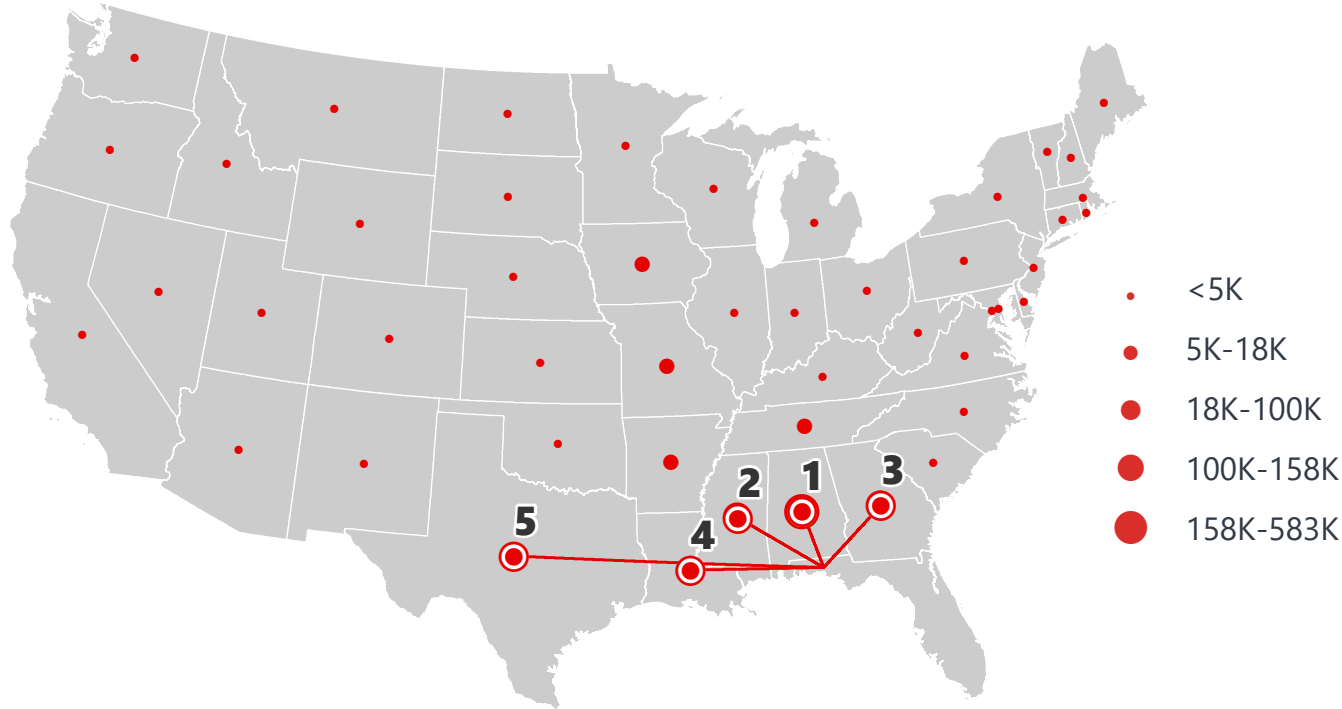
DOMESTIC EXPORTS (TONS)



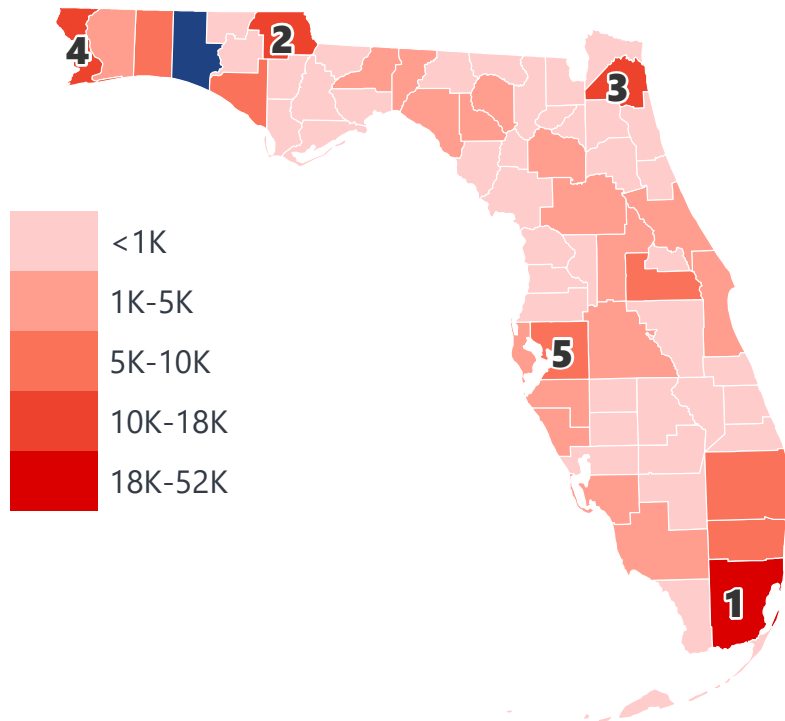
INTRASTATE EXPORTS (TONS)



DOMESTIC IMPORTS (TONS)



INTRASTATE IMPORTS (TONS)



## DOMESTIC EXPORTS (TONNAGE)

1	Georgia	200,711
2	Alabama	163,069
3	Louisiana	38,683
4	North Carolina	34,220
5	Mississippi	28,968

## INTRASTATE EXPORTS (TONNAGE)

1	Escambia	115,441
2	Santa Rosa	42,689
3	Okaloosa	23,322
4	Duval	18,830
5	Bay	17,294

## DOMESTIC IMPORTS (TONNAGE)

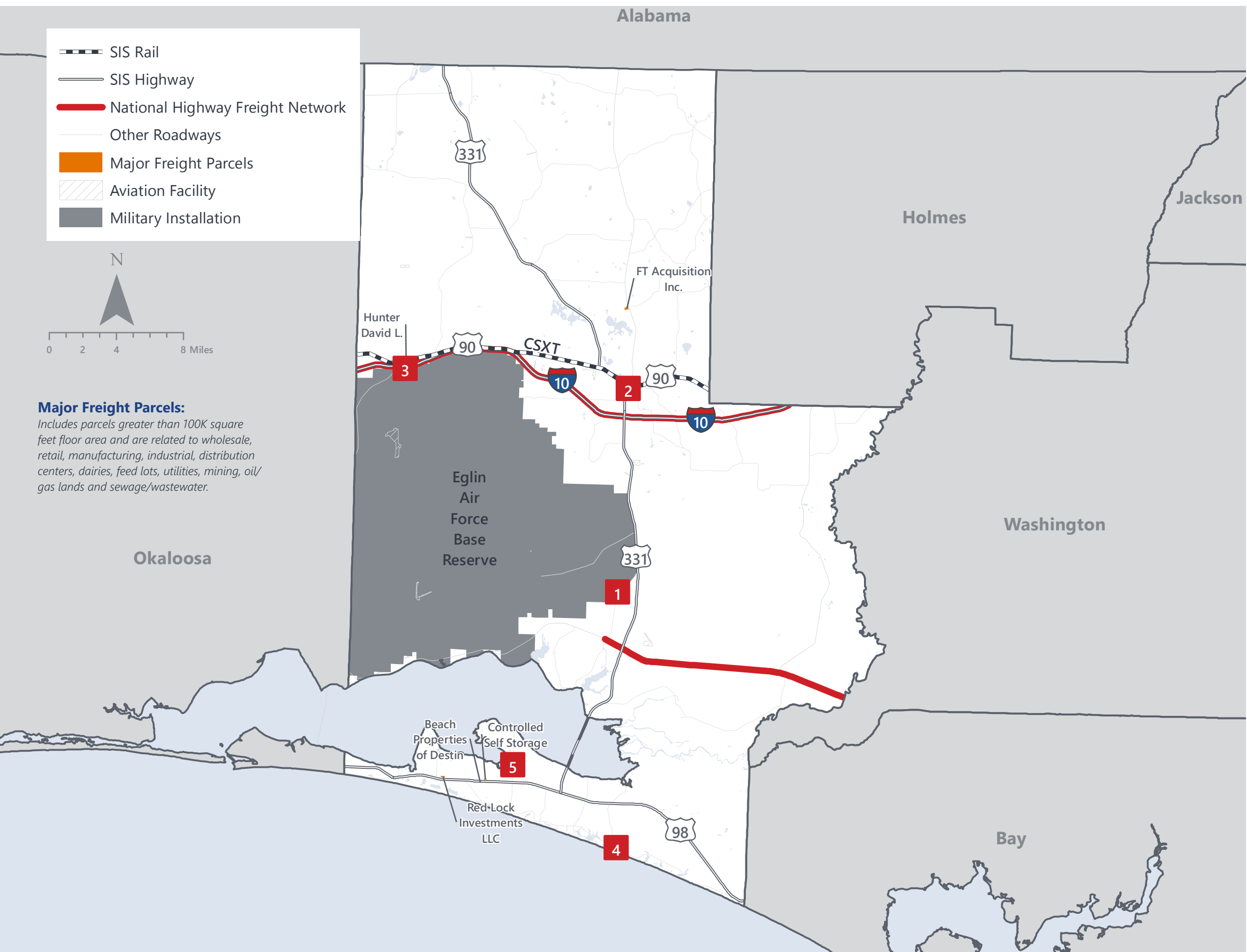
1	Alabama	582,703
2	Mississippi	157,519
3	Georgia	149,956
4	Louisiana	99,910
5	Texas	76,445

## INTRASTATE IMPORTS (TONNAGE)

1	Miami-Dade	51,395
2	Jackson	18,316
3	Duval	16,073
4	Escambia	12,539
5	Hillsborough	9,602



# WALTON COUNTY FREIGHT INFRASTRUCTURE



## LARGEST FREIGHT EMPLOYERS

1	Southern Wine	100-200
2	Professional Products	50-100
3	Fedex	50-100
4	Amavida	0-50
5	Sticks & Stones	0-50

## MAJOR FREIGHT LAND USES

3.8 M SQ.FT Floor Area

66.71%	Warehousing and distribution centers
15.10%	Light manufacturing
6.93%	Utilities
6.68%	Heavy industrial
1.66%	Fruit, vegetable and meat packing plants

2.1 B SQ.FT LAND AREA

88.86%	Sewage disposal and waste land
6.63%	Utilities
1.26%	Mining lands, petroleum lands, or gas lands
1.23%	Warehousing and distribution centers
1.22%	Heavy industrial

# MAJOR COUNTY COMMODITIES



## IMPORTS



### TOP COMMODITY by Tonnage, 2018 (relative to Florida)

FL Rank	Commodity	% Florida Share
33	Forest Products	0.65%
29	Petroleum or Coal Products	0.57%
38	Nonmetallic Minerals	0.42%
38	Lumber or Wood Products	0.42%
36	Marine Products	0.38%

## EXPORTS



FL Rank	Commodity	% Florida Share
11	Petroleum or Coal Products	1.36%
19	Forest Products	1.11%
29	Lumber or Wood Products	1.08%
15	Textile Mill Products	0.54%
16	Leather or Leather Products	0.44%

### TOP COMMODITY by Value, 2018 (relative to Florida)

FL Rank	Commodity	% Florida Share
28	Petroleum or Coal Products	0.63%
32	Forest Products	0.60%
35	Marine Products	0.44%
40	Lumber or Wood Products	0.34%
40	Nonmetallic Minerals	0.33%

FL Rank	Commodity	% Florida Share
20	Forest Products	1.16%
32	Lumber or Wood Products	1.00%
14	Textile Mill Products	0.62%
30	Farm Products	0.58%
14	Petroleum or Coal Products	0.46%





# TRANSPORTATION STATISTICS AND FREIGHT MOVEMENT BY MODE



**299 K** | Daily Truck Miles Traveled  
**1.15** | Planning Time Index  
**1,391** | Public Roadway Mileage



**52 Miles** | Distance from closest seaport  
(Port of Panama City)



**22.19** | Class I Mainline Miles (CSX)  
- Class II Mainline Miles  
- Class III Mainline Miles



**44 Miles** | Distance from closest airport  
(Northwest Florida - Beaches International Airport)



# FLORIDA HIGHLIGHTS

**3rd most populous** US State

**\$1T Gross** Domestic Product

**4th Largest** US Economy and **17th Largest** Economy in World

Nation's **3rd largest** workforce

**1 in 5 U.S. exporters** are located in Florida

**\$153B** International Trade

**1.76M jobs supported** by Trade, Transportation and Utilities industry sector

**1.25M jobs supported** by Leisure and Hospitality industry sector

**131M** annual visitors

CAPITAL **TALLAHASSEE**

AREA (SQ. MILES) **53,624**

LARGEST CITY (SIZE) **JACKSONVILLE**

POPULATION (2019) **21,208,589**

ANNUAL POP GROWTH RATE (2010-2019) **1.4%**

EMPLOYMENT (2019) **8,884,065**

ANNUAL EMP GROWTH RATE (2010-2019) **2.8%**

*Bureau of Economic Business Research,  
Bureau of Labor Statistics*

## DOMESTIC IMPORTS

<b>1</b>	<b>GEORGIA</b>	\$44B
<b>2</b>	<b>CALIFORNIA</b>	\$29B
<b>3</b>	<b>TEXAS</b>	\$26B
<b>4</b>	<b>ALABAMA</b>	\$18B
<b>5</b>	<b>ILLINOIS</b>	\$18B

## DOMESTIC EXPORTS

<b>1</b>	<b>GEORGIA</b>	\$22B
<b>2</b>	<b>TEXAS</b>	\$19B
<b>3</b>	<b>CALIFORNIA</b>	\$15B
<b>4</b>	<b>NORTH CAROLINA</b>	\$12B
<b>5</b>	<b>NEW YORK</b>	\$10B

## INTERNATIONAL IMPORTS

<b>1</b>	<b>CHINA</b>	\$9.5B
<b>2</b>	<b>JAPAN</b>	\$6.5B
<b>3</b>	<b>BRAZIL</b>	\$6.4B
<b>4</b>	<b>MEXICO</b>	\$4.5B
<b>5</b>	<b>CHILE</b>	\$3.7B

## INTERNATIONAL EXPORTS

<b>1</b>	<b>BRAZIL</b>	\$13.4B
<b>2</b>	<b>COLOMBIA</b>	\$4.2B
<b>3</b>	<b>ARGENTINA</b>	\$3.6B
<b>4</b>	<b>DOMINICAN REPUBLIC</b>	\$3.1B
<b>5</b>	<b>CHILE</b>	\$3B

# TRANSPORTATION STATISTICS AND FREIGHT MOVEMENT BY MODE



**83%**  
TONNAGE

**71%**  
VALUE

**123,104** Public roadway mileage  
**12,130** State Highway System (SHS) mileage  
**30.7M** Daily truck miles traveled on SHS  
**98** Public truck parking facilities



**3.5%**  
TONNAGE

**2.9%**  
VALUE

**15** Deepwater seaports  
**4.1M** Twenty-foot equivalent units (TEUs)  
**16.8M** Annual cruise passengers



**6.7%**  
TONNAGE

**1.8%**  
VALUE

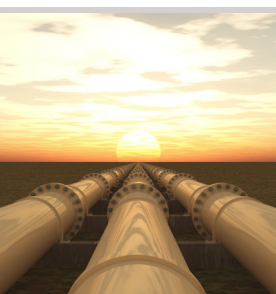
**2,936** Miles of roads  
**6.9M** Annual rail passenger traffic



**0.1%**  
TONNAGE

**5.4%**  
VALUE

**129** Public use airports  
**20** Commercial service airports  
**2** Active spaceports



**3.6%**  
TONNAGE

**1%**  
VALUE

**5,899** Miles of gas transmission and hazardous liquid pipelines



**3.1%**  
TONNAGE

**17.9%**  
VALUE

Includes shipments by multiple modes and by parcel delivery services, U.S. Postal Service, or couriers (capped at 150 pounds). This category is not limited to containerized or trailer-on-flatcar shipments.

# FLORIDA COMMODITY FLOWS (2018-2045)



IMPORTS



WITHIN FL



EXPORTS

	2018	2045	2018	2045	2018	2045
TONNAGE	142M	190M	656M	761M	57M	103M
VALUE	\$321B	\$690B	\$402B	\$844B	\$180B	\$606B

Freight Analysis Framework (FAF) 4.5.1.



**Rickey Fitzgerald**  
 Manager, Freight & Multimodal Operations  
 Florida Department of Transportation  
 605 Suwannee Street, Tallahassee, FL 32399  
 Rickey.Fitzgerald@dot.state.fl.us  
 850.414.4702