

# FREIGHT AND LOGISTICS OVERVIEW

FEBRUARY 2021

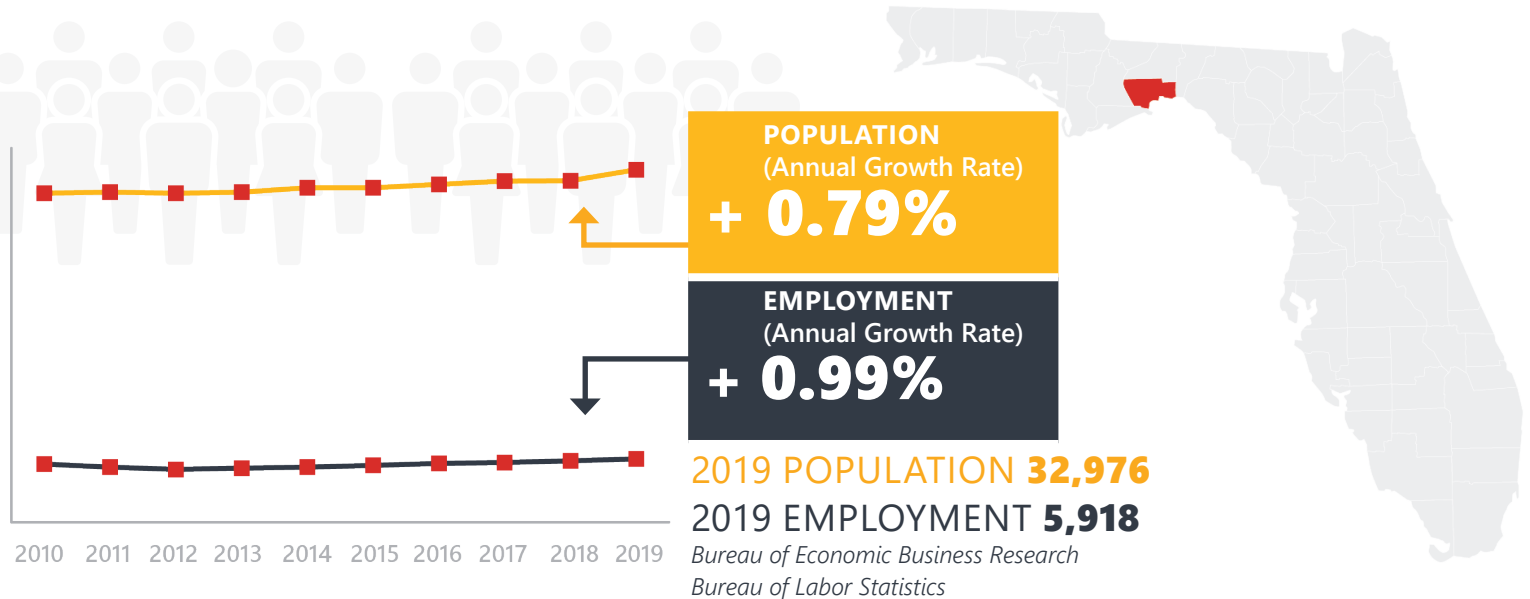
# WAKULLA COUNTY



*Mission: The department will provide a safe transportation system that ensures the mobility of people and goods, enhances economic prosperity, and preserves the quality of our environment and communities.*

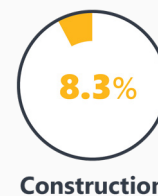
# WAKULLA COUNTY HIGHLIGHTS

"THE NATURAL PLACE TO BE"		AREA (SQ . MILES)	736
COUNTY SEAT	CRAWFORDVILLE	LARGEST CITY (SIZE)	SOPCHOPPY



## LARGEST INDUSTRY SECTORS BY EMPLOYMENT (2019)

Office of Economic and Demographic Research



## FASTEST GROWING INDUSTRIES (2010-2019)

CONSTRUCTION	JOBS ADDED	182
LEISURE AND HOSPITALITY		169
TRADE, TRANSPORTATION, AND UTILITIES		162
PROFESSIONAL AND BUSINESS SERVICES		90
EDUCATION AND HEALTH SERVICES		41

Bureau of Labor Statistics

## DID YOU KNOW?

The historic St. Marks Lighthouse, located in the St. Marks National Wildlife Refuge, is the second oldest lighthouse in Florida.

Every summer, residents and visitors gather across the shores of Wakulla County to harvest delicious bay scallops.

The county is home to Wakulla Springs, the world's deepest and longest freshwater spring.



# COMMODITY FLOW HIGHLIGHTS



## IMPORTS

## WITHIN COUNTY

## EXPORTS

	2018	2045	2018	2045	2018	2045
Tonnage:	0.17 M	0.18 M	1.11 K	1.86 K	0.21 M	0.47 M
Value:	\$ 0.12 B	\$ 0.14 B	\$ 1.23 M	\$ 1.6 M	\$ 0.21 B	\$ 0.42 B



### TOP COMMODITY by Tonnage, 2018



Chemicals or Allied Products	51,024
Petroleum or Coal Products	41,223
Warehouse, Distribution Center and Drayage Movements	36,941
Nonmetallic Minerals	17,371
Clay, Concrete, Glass, Stone	10,768

Chemicals or Allied Products	101,547
Petroleum or Coal Products	45,715
Lumber or Wood Products	32,952
Waste or Scrap Materials	15,854
Farm Products	6,922



### TOP COMMODITY by Value, 2018

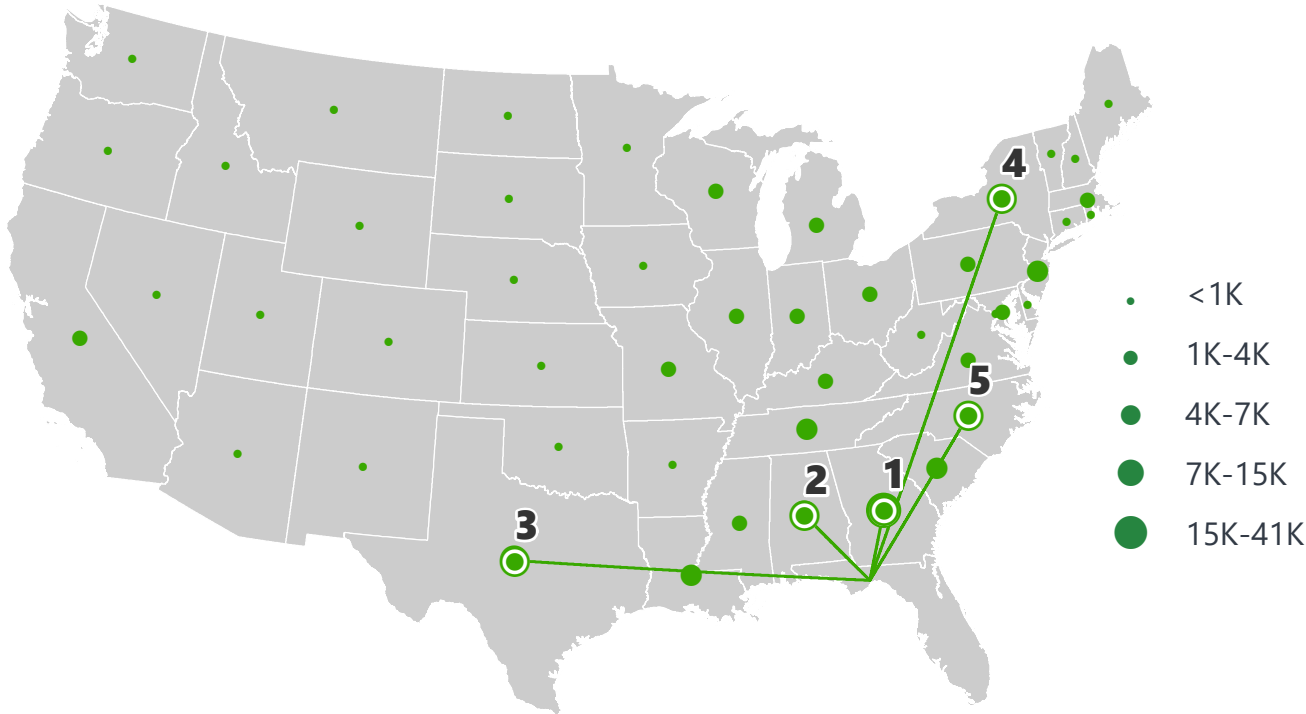


Warehouse, Distribution Center and Drayage Movements	\$ 45,277,245
Petroleum or Coal Products	\$ 23,907,259
Chemicals or Allied Products	\$ 18,817,856
Transportation Equipment	\$ 15,303,195
Food or Kindred Products	\$ 4,783,038

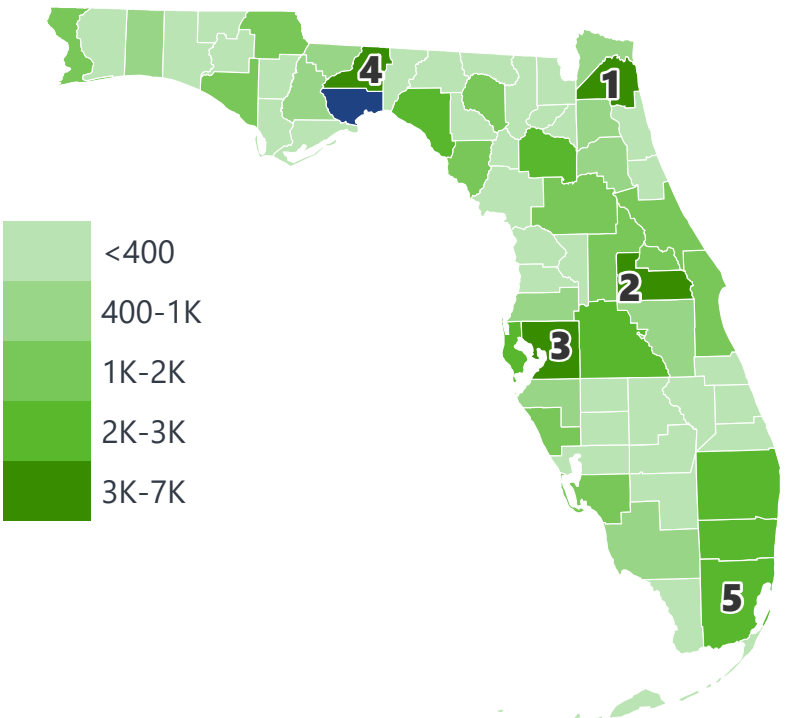
Chemicals or Allied Products	\$ 146,927,208
Machinery	\$ 19,662,001
Marine Products	\$ 16,668,659
Warehouse, Distribution Center and Drayage Movements	\$ 6,917,988
Lumber or Wood Products	\$ 5,769,220

# WAKULLA COUNTY EXPORTS AND IMPORTS

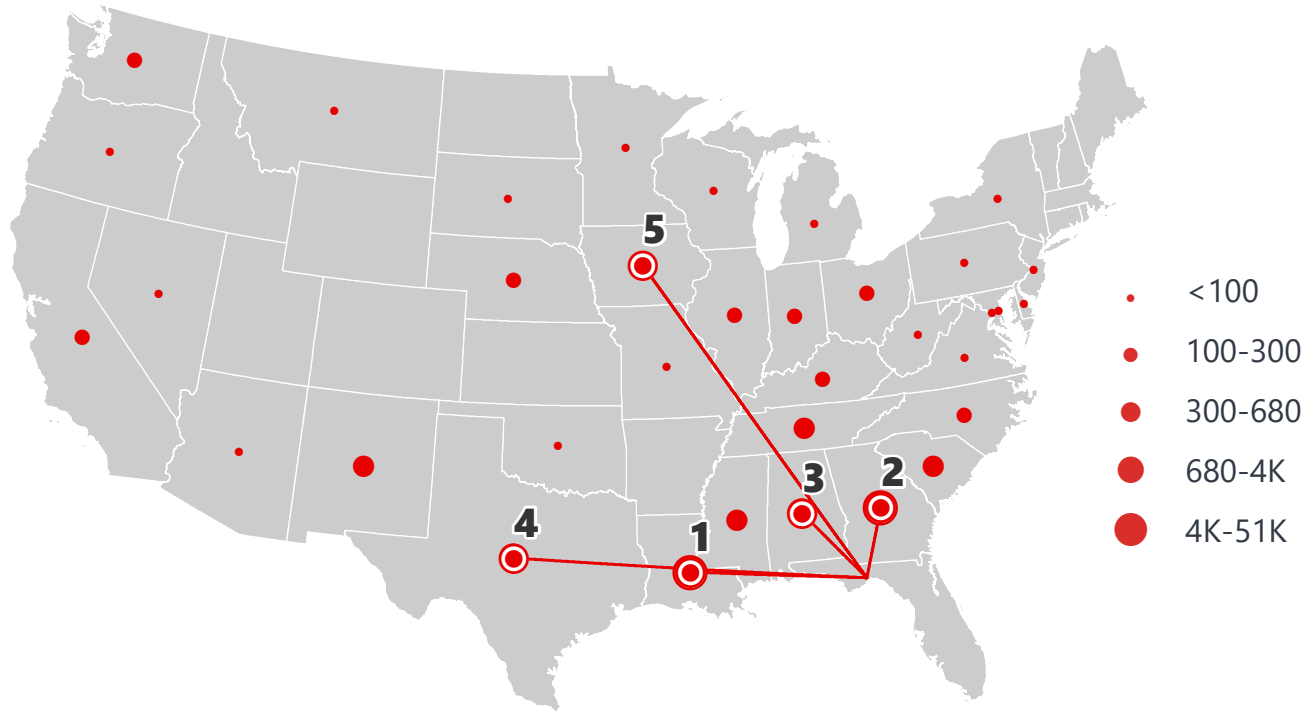
DOMESTIC EXPORTS (TONS)



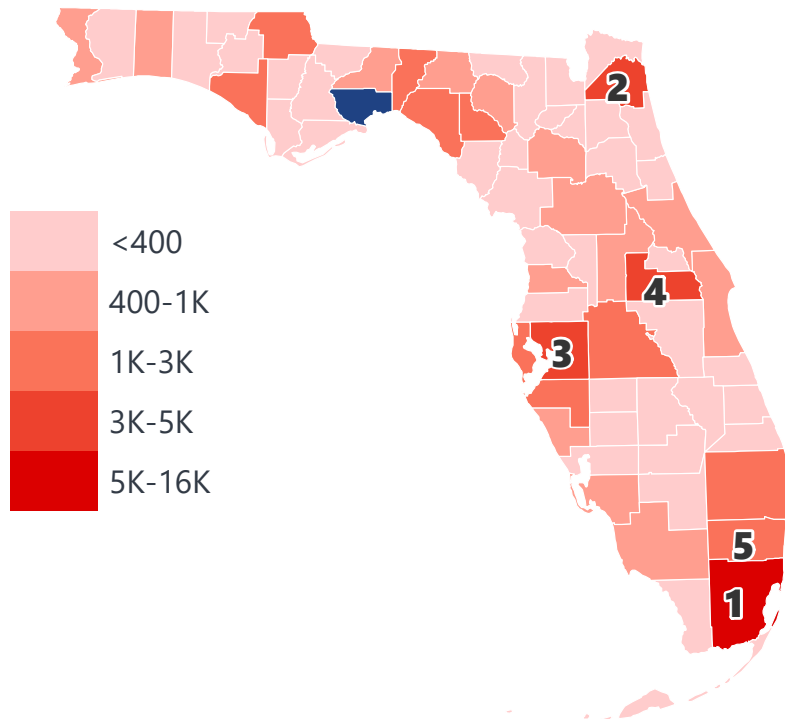
INTRASTATE EXPORTS (TONS)



DOMESTIC IMPORTS (TONS)



INTRASTATE IMPORTS (TONS)



## DOMESTIC EXPORTS (TONNAGE)

1	Georgia	40,307
2	Alabama	15,490
3	Texas	11,535
4	New York	7,070
5	North Carolina	6,849

## INTRASTATE EXPORTS (TONNAGE)

1	Duval	6,288
2	Orange	5,313
3	Hillsborough	4,959
4	Leon	4,183
5	Miami-Dade	3,309

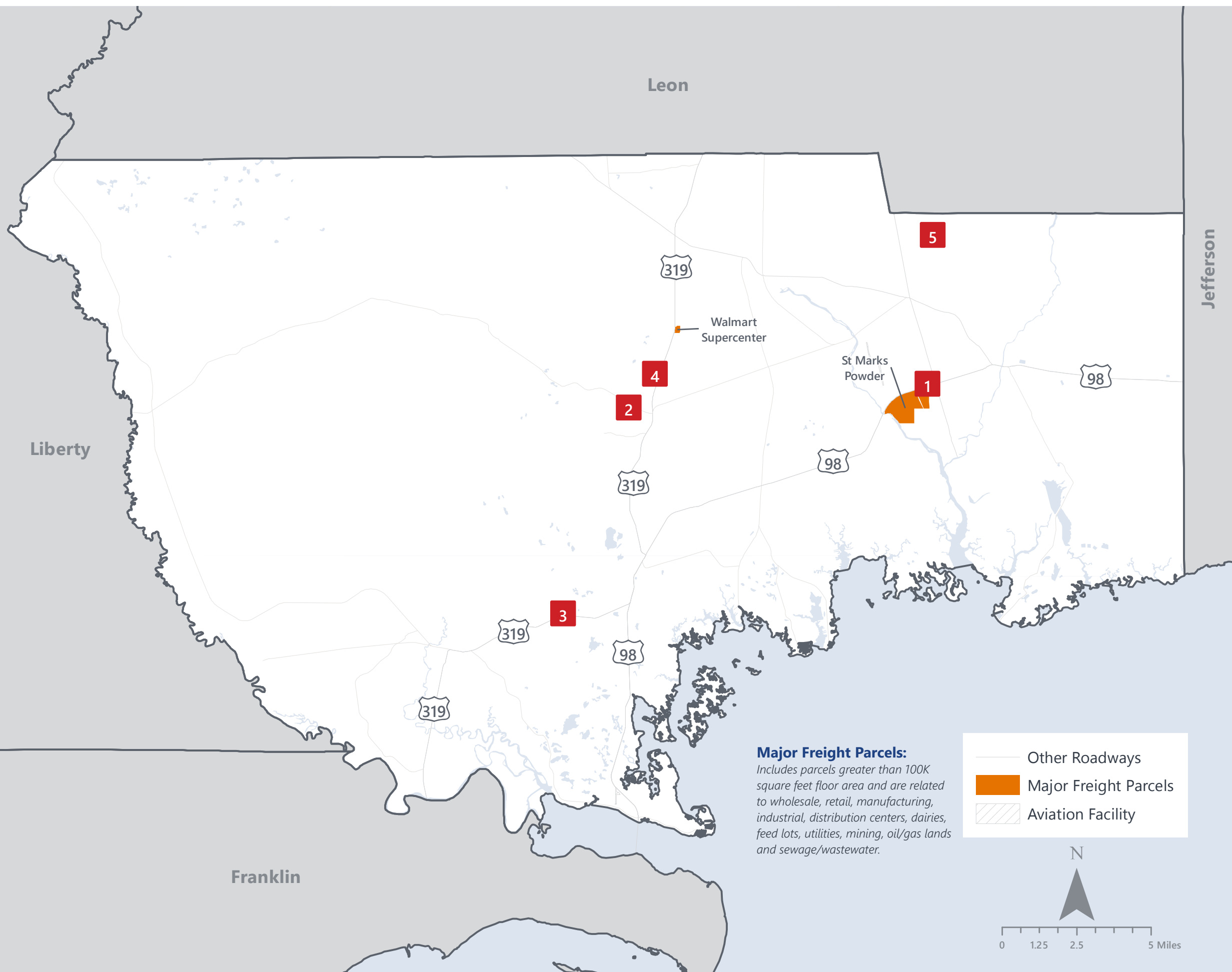
## DOMESTIC IMPORTS (TONNAGE)

1	Louisiana	50,809
2	Georgia	43,723
3	Alabama	4,009
4	Texas	2,336
5	Iowa	678

## INTRASTATE IMPORTS (TONNAGE)

1	Miami-Dade	15,850
2	Duval	4,758
3	Hillsborough	4,361
4	Orange	3,267
5	Broward	2,647

# WAKULLA COUNTY FREIGHT INFRASTRUCTURE



## LARGEST FREIGHT EMPLOYERS

1	St. Marks Powder	400-500
2	Rei Holding	50-100
3	Sanders & Sons	0-50
4	USPS	0-50
5	Pitney Bowes	0-50

## MAJOR FREIGHT LAND USES

### 1 M SQ.FT Floor Area

62.42%	Light manufacturing
27.71%	Warehousing and distribution centers
4.87%	Fruit, vegetable and meat packing plants
2.50%	Minerals processing and construction material plants
1.17%	Utilities

### 126.8 M SQ.FT LAND AREA

42.59%	Light manufacturing
40.86%	Sewage disposal and waste land
12.54%	Utilities
2.42%	Warehousing and distribution centers
0.64%	Minerals processing and construction material plants

Florida Department of Economic Opportunity, 2018  
Florida Department of Revenue, 2019



# MAJOR COUNTY COMMODITIES



## IMPORTS



### TOP COMMODITY by Tonnage, 2018 (relative to Florida)

FL Rank	Commodity	% Florida Share
32	Chemicals or Allied Products	0.33%
52	Warehouse, Distribution Center and Drayage Movements	0.09%
52	Petroleum or Coal Products	0.06%
63	Clay, Concrete, Glass, Stone	0.03%
55	Food or Kindred Products	0.02%

## EXPORTS



FL Rank	Commodity	% Florida Share
16	Marine Products	0.83%
17	Chemicals or Allied Products	0.75%
25	Machinery	0.43%
50	Lumber or Wood Products	0.35%
22	Petroleum or Coal Products	0.13%

### TOP COMMODITY by Value, 2018 (relative to Florida)

FL Rank	Commodity	% Florida Share
44	Chemicals or Allied Products	0.06%
52	Warehouse, Distribution Center and Drayage Movements	0.06%
52	Petroleum or Coal Products	0.06%
47	Leather or Leather Products	0.03%
62	Clay, Concrete, Glass, Stone	0.02%

FL Rank	Commodity	% Florida Share
14	Marine Products	1.04%
15	Chemicals or Allied Products	0.88%
30	Machinery	0.19%
56	Lumber or Wood Products	0.12%
54	Waste or Scrap Materials	0.06%





# TRANSPORTATION STATISTICS AND FREIGHT MOVEMENT BY MODE



**37 K** | Daily Truck Miles Traveled  
- Planning Time Index  
**1,071** | Public Roadway Mileage



**81 Miles** | Distance from closest major seaport (Port of Port St. Joe)



- Class I Mainline Miles
- Class II Mainline Miles
- Class III Mainline Miles



**18 Miles** | Distance from closest major airport (Tallahassee International Airport)

# FLORIDA HIGHLIGHTS

**3rd most populous** US State

**\$1T Gross** Domestic Product

**4th Largest** US Economy and **17th Largest** Economy in World

Nation's **3rd largest** workforce

**1 in 5 U.S. exporters** are located in Florida

**\$153B** International Trade

**1.76M jobs supported** by Trade, Transportation and Utilities industry sector

**1.25M jobs supported** by Leisure and Hospitality industry sector

**131M** annual visitors

CAPITAL **TALLAHASSEE**

AREA (SQ. MILES) **53,624**

LARGEST CITY (SIZE) **JACKSONVILLE**

POPULATION (2019) **21,208,589**

ANNUAL POP GROWTH RATE (2010-2019) **1.4%**

EMPLOYMENT (2019) **8,884,065**

ANNUAL EMP GROWTH RATE (2010-2019) **2.8%**

*Bureau of Economic Business Research,  
Bureau of Labor Statistics*

## DOMESTIC IMPORTS

<b>1</b>	<b>GEORGIA</b>	\$44B
<b>2</b>	<b>CALIFORNIA</b>	\$29B
<b>3</b>	<b>TEXAS</b>	\$26B
<b>4</b>	<b>ALABAMA</b>	\$18B
<b>5</b>	<b>ILLINOIS</b>	\$18B

## DOMESTIC EXPORTS

<b>1</b>	<b>GEORGIA</b>	\$22B
<b>2</b>	<b>TEXAS</b>	\$19B
<b>3</b>	<b>CALIFORNIA</b>	\$15B
<b>4</b>	<b>NORTH CAROLINA</b>	\$12B
<b>5</b>	<b>NEW YORK</b>	\$10B

## INTERNATIONAL IMPORTS

<b>1</b>	<b>CHINA</b>	\$9.5B
<b>2</b>	<b>JAPAN</b>	\$6.5B
<b>3</b>	<b>BRAZIL</b>	\$6.4B
<b>4</b>	<b>MEXICO</b>	\$4.5B
<b>5</b>	<b>CHILE</b>	\$3.7B

## INTERNATIONAL EXPORTS

<b>1</b>	<b>BRAZIL</b>	\$13.4B
<b>2</b>	<b>COLOMBIA</b>	\$4.2B
<b>3</b>	<b>ARGENTINA</b>	\$3.6B
<b>4</b>	<b>DOMINICAN REPUBLIC</b>	\$3.1B
<b>5</b>	<b>CHILE</b>	\$3B



# TRANSPORTATION STATISTICS AND FREIGHT MOVEMENT BY MODE



**83%**  
TONNAGE

**71%**  
VALUE

**123,104** Public roadway mileage  
**12,130** State Highway System (SHS) mileage  
**30.7M** Daily truck miles traveled on SHS  
**98** Public truck parking facilities



**3.5%**  
TONNAGE

**2.9%**  
VALUE

**15** Deepwater seaports  
**4.1M** Twenty-foot equivalent units (TEUs)  
**16.8M** Annual cruise passengers



**6.7%**  
TONNAGE

**1.8%**  
VALUE

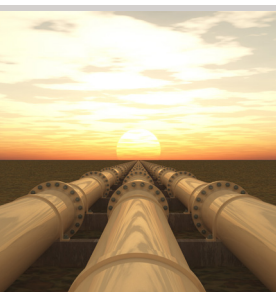
**2,936** Miles of roads  
**6.9M** Annual rail passenger traffic



**0.1%**  
TONNAGE

**5.4%**  
VALUE

**129** Public use airports  
**20** Commercial service airports  
**2** Active spaceports



**3.6%**  
TONNAGE

**1%**  
VALUE

**5,899** Miles of gas transmission and hazardous liquid pipelines



**3.1%**  
TONNAGE

**17.9%**  
VALUE

Includes shipments by multiple modes and by parcel delivery services, U.S. Postal Service, or couriers (capped at 150 pounds). This category is not limited to containerized or trailer-on-flatcar shipments.

# FLORIDA COMMODITY FLOWS (2018-2045)



IMPORTS



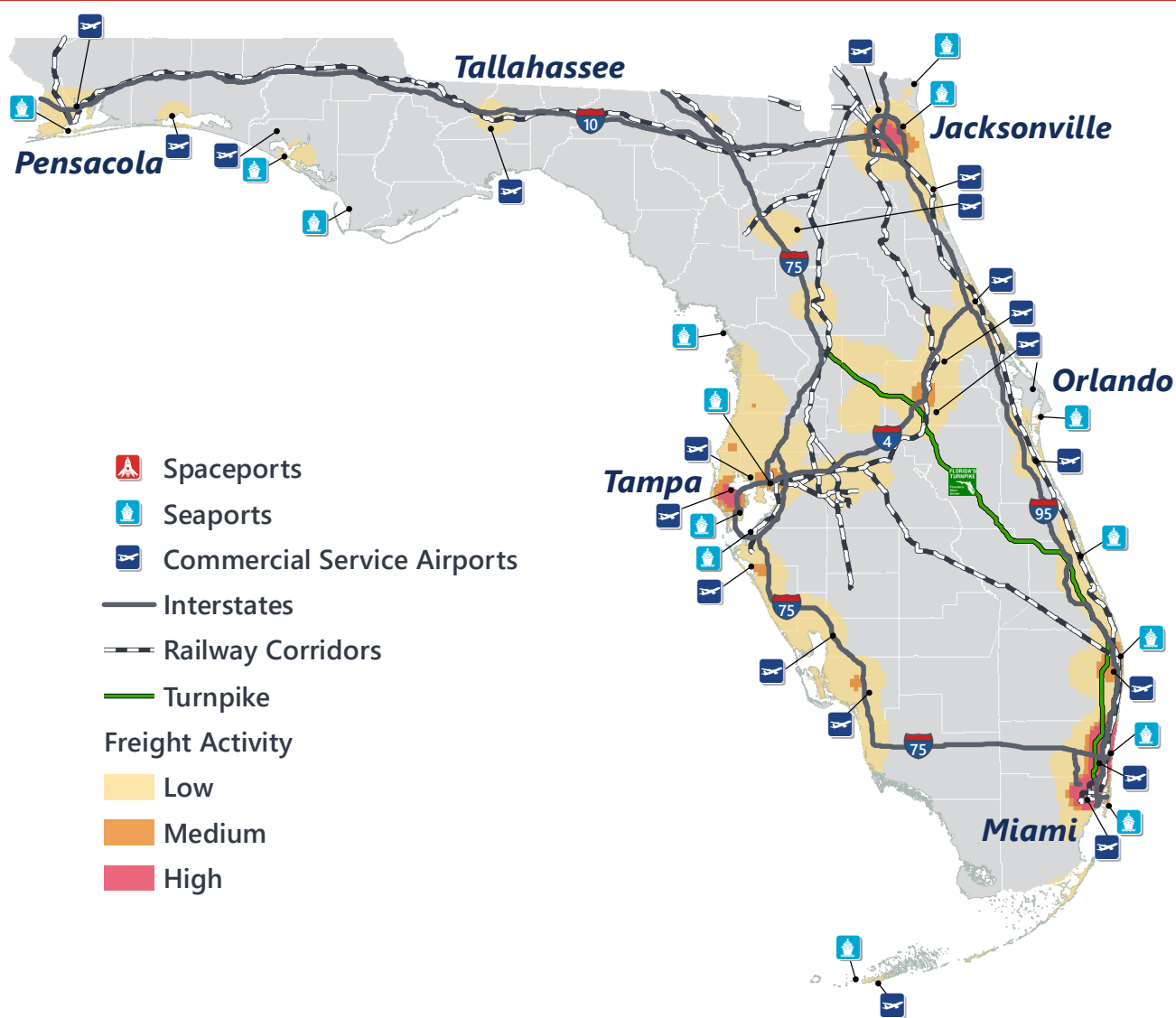
WITHIN FL



EXPORTS

	2018	2045	2018	2045	2018	2045
TONNAGE	142M	190M	656M	761M	57M	103M
VALUE	\$321B	\$690B	\$402B	\$844B	\$180B	\$606B

Freight Analysis Framework (FAF) 4.5.1.



**Rickey Fitzgerald**  
**Manager, Freight & Multimodal Operations**  
 Florida Department of Transportation  
 605 Suwannee Street, Tallahassee, FL 32399  
 Rickey.Fitzgerald@dot.state.fl.us  
 850.414.4702