

FREIGHT AND LOGISTICS OVERVIEW

FEBRUARY 2021

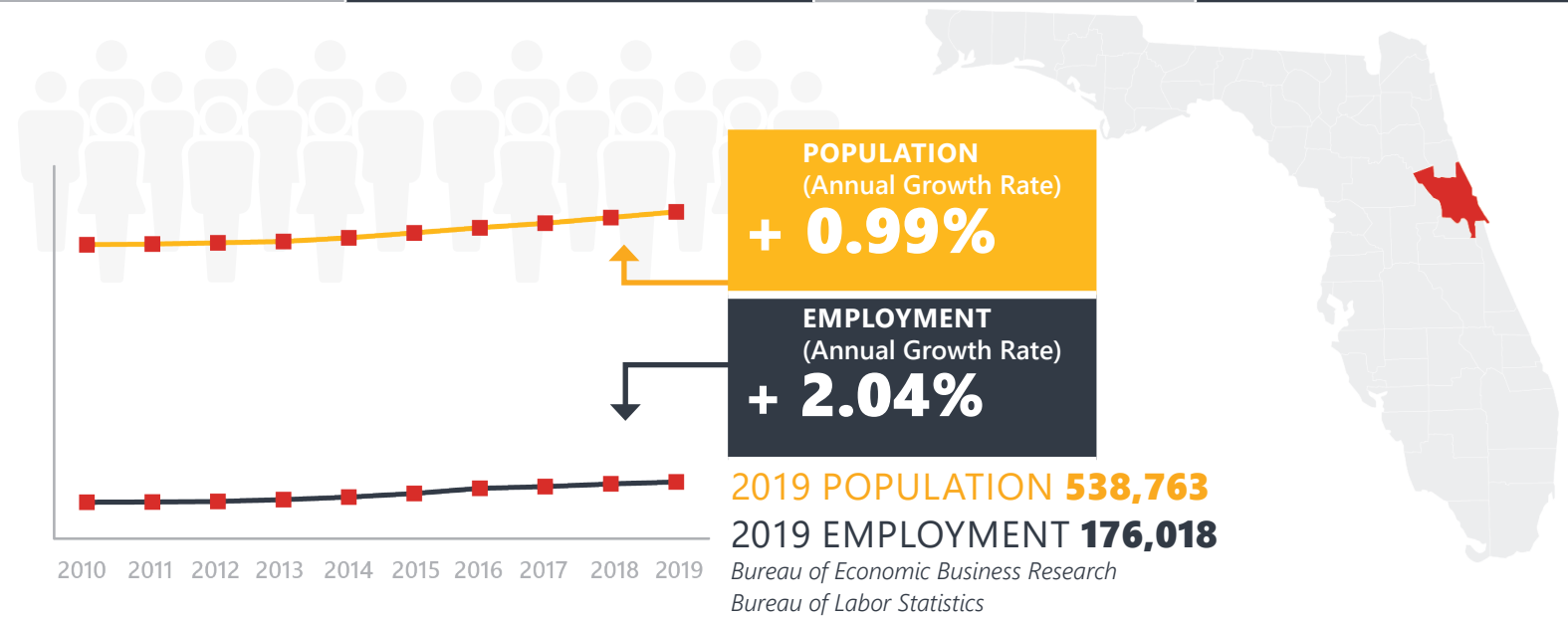
VOLUSIA COUNTY



Mission: The department will provide a safe transportation system that ensures the mobility of people and goods, enhances economic prosperity, and preserves the quality of our environment and communities.

VOLUSIA COUNTY HIGHLIGHTS

"BEST BEGINNER SURFING WAVES"		AREA (SQ . MILES)	1,432
COUNTY SEAT	DELAND	LARGEST CITY (SIZE)	DAYTONA BEACH

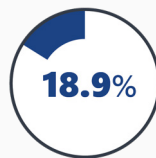


LARGEST INDUSTRY SECTORS BY EMPLOYMENT (2019)

Office of Economic and Demographic Research



Education & health services



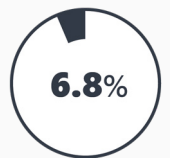
Trade, transportation & utilities



Leisure & hospitality



Professional & business services



Construction

FASTEST GROWING INDUSTRIES (2010-2019)

LEISURE AND HOSPITALITY	JOBS ADDED	7,065
EDUCATION AND HEALTH SERVICES		5,508
CONSTRUCTION		4,511
TRADE, TRANSPORTATION, AND UTILITIES		3,907
MANUFACTURING		3,229

Bureau of Labor Statistics

DID YOU KNOW?

"The Birthplace of Speed", Daytona International Speedway attracts hundreds of thousands of visitors every year.

Volusia County boasts approximately 240,000 acres of conservation lands, 172 linear miles of waterways, and 35 miles of beaches.

Florida Trend's list of the 350 biggest companies in Florida includes four Volusia County firms: NASCAR, Brown & Brown, International Speedway Corp. and Consolidated-Tomoka Land Co.

COMMODITY FLOW HIGHLIGHTS



IMPORTS

WITHIN COUNTY

EXPORTS

	2018	2045	2018	2045	2018	2045
Tonnage:	7.87 M	10.19 M	0.66 M	0.50 M	4.13 M	3.93 M
Value:	\$ 5.78 B	\$ 7.76 B	\$ 0.32 B	\$ 0.38 B	\$ 3.88 B	\$ 5.67 B



TOP COMMODITY by Tonnage, 2018



Nonmetallic Minerals	1,987,132
Waste or Scrap Materials	1,615,619
Clay, Concrete, Glass, Stone	1,174,734
Petroleum or Coal Products	976,889
Warehouse, Distribution Center and Drayage Movements	825,941

Nonmetallic Minerals	1,281,468
Clay, Concrete, Glass, Stone	1,246,919
Warehouse, Distribution Center and Drayage Movements	651,681
Waste or Scrap Materials	313,383
Chemicals or Allied Products	233,413



TOP COMMODITY by Value, 2018

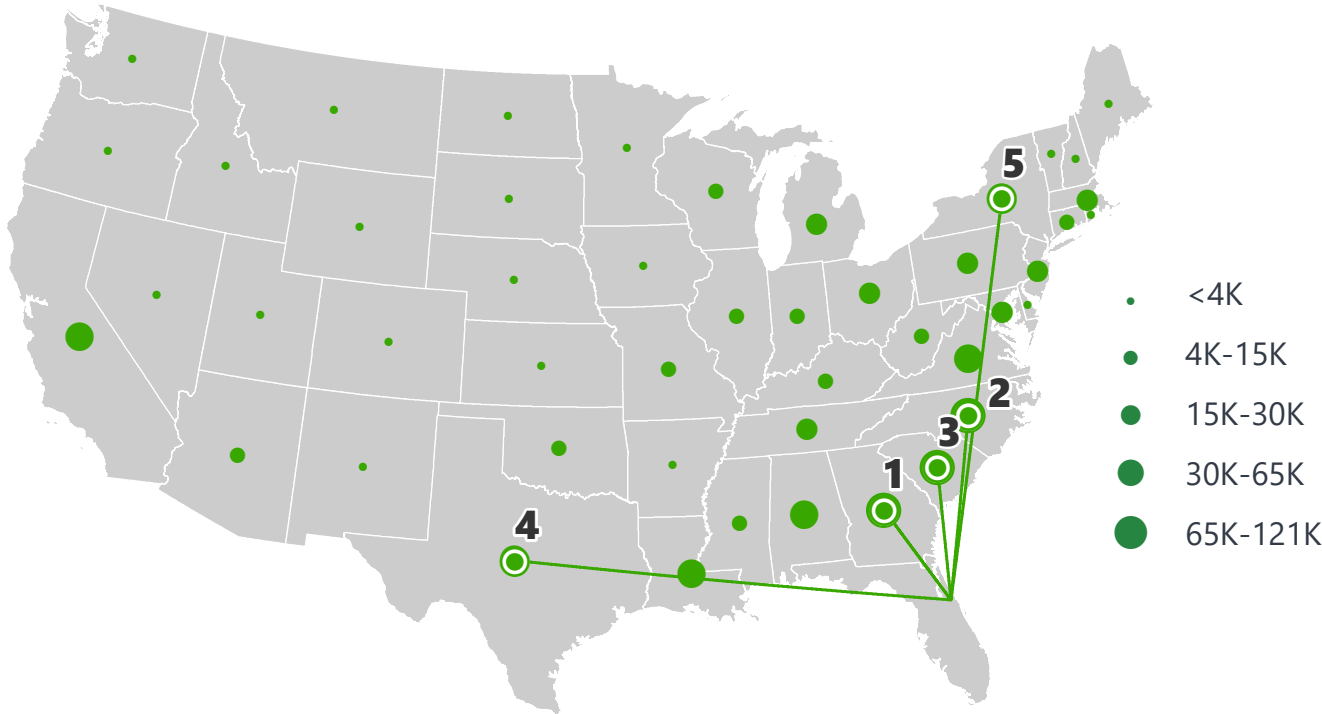


Warehouse, Distribution Center and Drayage Movements	\$ 1,039,095,714
Transportation Equipment	\$ 963,067,149
Food or Kindred Products	\$ 651,201,558
Petroleum or Coal Products	\$ 503,203,398
Waste or Scrap Materials	\$ 396,517,321

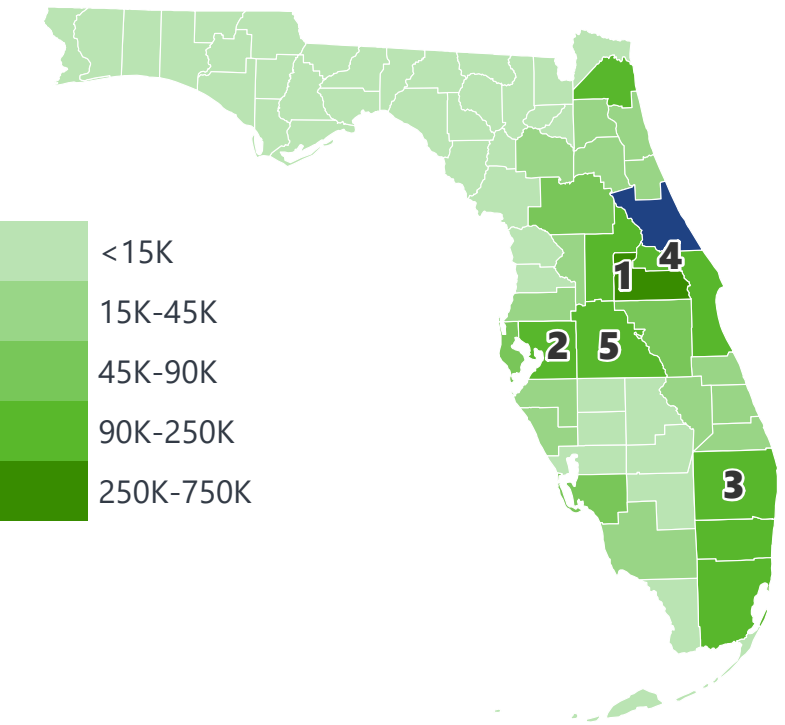
Chemicals or Allied Products	\$ 1,109,044,365
Warehouse, Distribution Center and Drayage Movements	\$ 824,104,779
Transportation Equipment	\$ 419,881,723
Machinery	\$ 406,531,086
Clay, Concrete, Glass, Stone	\$ 196,318,572

VOLUSIA COUNTY EXPORTS AND IMPORTS

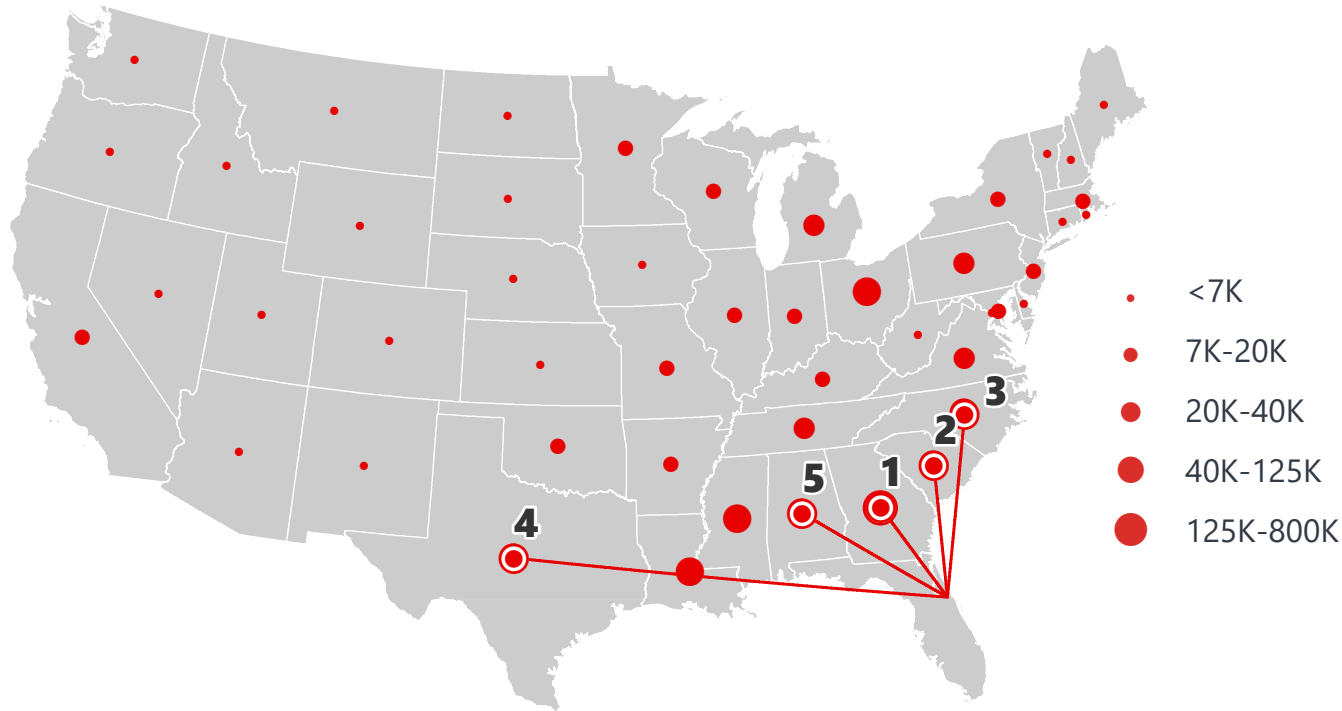
DOMESTIC EXPORTS (TONS)



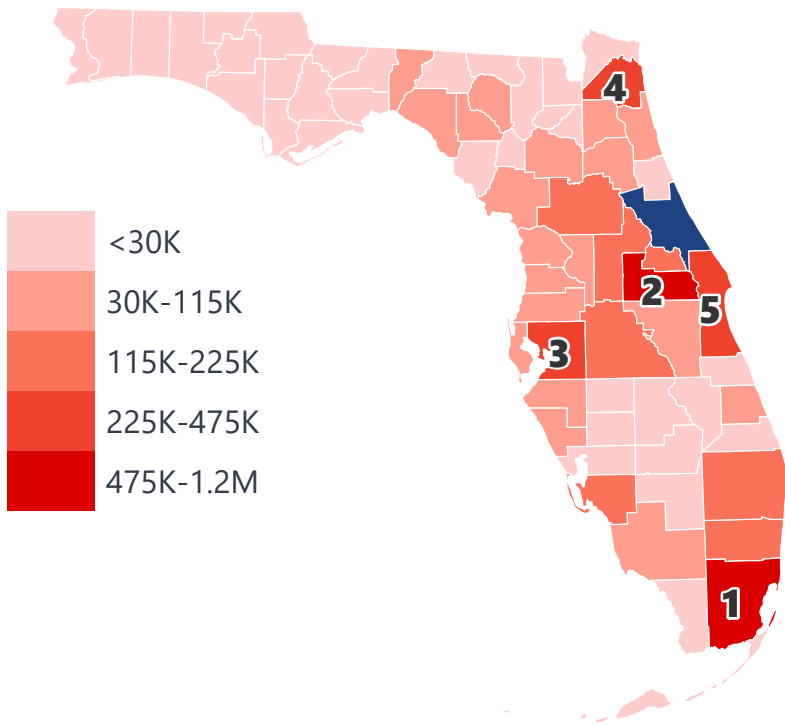
INTRASTATE EXPORTS (TONS)



DOMESTIC IMPORTS (TONS)



INTRASTATE IMPORTS (TONS)



DOMESTIC EXPORTS (TONNAGE)

1	Georgia	120,760
2	North Carolina	88,250
3	South Carolina	84,403
4	Texas	63,594
5	New York	49,465

INTRASTATE EXPORTS (TONNAGE)

1	Orange	733,304
2	Hillsborough	242,669
3	Palm Beach	222,699
4	Seminole	205,334
5	Polk	191,094

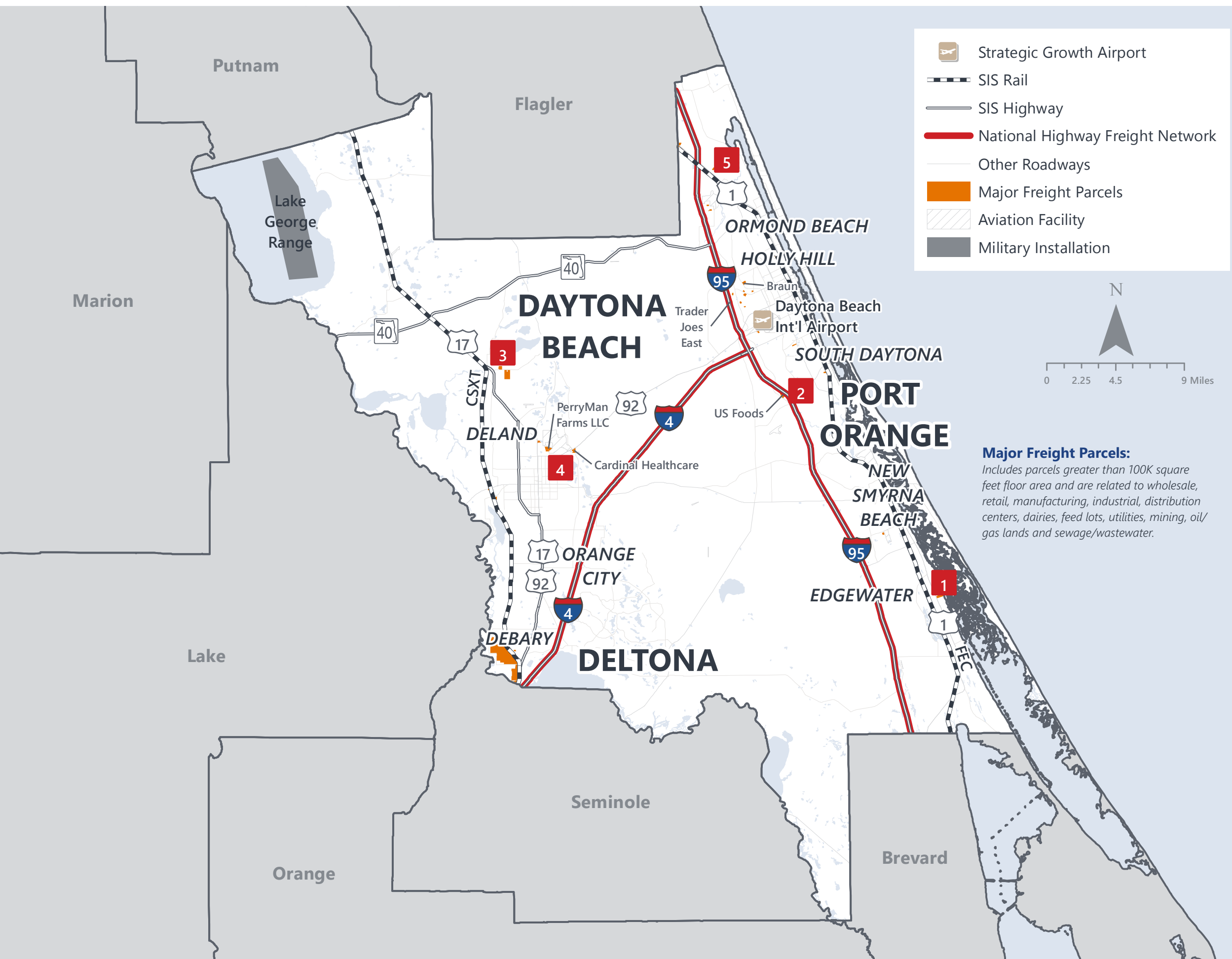
DOMESTIC IMPORTS (TONNAGE)

1	Georgia	785,975
2	South Carolina	122,008
3	North Carolina	115,720
4	Texas	90,745
5	Alabama	84,166

INTRASTATE IMPORTS (TONNAGE)

1	Miami-Dade	1,146,551
2	Orange	923,778
3	Hillsborough	473,055
4	Duval	462,577
5	Brevard	354,855

VOLUSIA COUNTY FREIGHT INFRASTRUCTURE



LARGEST FREIGHT EMPLOYERS

1	Boston Whaler	900-1K
2	US FoodService	500-600
3	Sparton Deleon	400-500
4	Covidien	400-500
5	Thomas & Betts	300-400

MAJOR FREIGHT LAND USES

28.75 M SQ.FT Floor Area

51.19%	Warehousing and distribution centers
28.80%	Light manufacturing
7.17%	Dairies, feed lots
4.39%	Heavy industrial
3.12%	Airports, bus terminals and marine terminals

1.1 B SQ.FT LAND AREA

46.61%	Dairies, feed lots
19.27%	Sewage disposal and waste land
18.57%	Utilities
7.02%	Warehousing and distribution centers
4.56%	Light manufacturing

MAJOR COUNTY COMMODITIES



IMPORTS



TOP COMMODITY by Tonnage, 2018 (relative to Florida)

FL Rank	Commodity	% Florida Share
2	Waste or Scrap Materials	10.25%
3	Metallic Ores	7.43%
8	Textile Mill Products	3.67%
7	Leather or Leather Products	3.36%
12	Clay, Concrete, Glass, Stone	2.82%

EXPORTS



FL Rank	Commodity	% Florida Share
6	Machinery	6.76%
8	Textile Mill Products	5.14%
8	Misc. Manufacturing Products	4.09%
8	Electrical Equipment	3.56%
11	Fabricated Metal Products	2.71%

TOP COMMODITY by Value, 2018 (relative to Florida)

FL Rank	Commodity	% Florida Share
4	Waste or Scrap Materials	9.95%
9	Textile Mill Products	3.07%
7	Leather or Leather Products	2.92%
12	Clay, Concrete, Glass, Stone	2.38%
11	Rubber or Misc. Plastics	2.06%

FL Rank	Commodity	% Florida Share
7	Chemicals or Allied Products	6.67%
9	Textile Mill Products	3.93%
8	Machinery	3.84%
11	Clay, Concrete, Glass, Stone	2.58%
11	Fabricated Metal Products	2.48%



TRANSPORTATION STATISTICS AND FREIGHT MOVEMENT BY MODE



811 K | Daily Truck Miles Traveled
1.18 | Planning Time Index
3,376 | Public Roadway Mileage



1 Major Seaport | Port Canaveral



39.84 | Class I Mainline Miles (CFRC, CSX)
44.46 | Class II Mainline Miles (FEC)
- | Class III Mainline Miles



1 Major International Airport | Daytona Beach International

FLORIDA HIGHLIGHTS

3rd most populous US State

\$1T Gross Domestic Product

4th Largest US Economy and **17th Largest** Economy in World

Nation's **3rd largest** workforce

1 in 5 U.S. exporters are located in Florida

\$153B International Trade

1.76M jobs supported by Trade, Transportation and Utilities industry sector

1.25M jobs supported by Leisure and Hospitality industry sector

131M annual visitors

CAPITAL **TALLAHASSEE**

AREA
(SQ. MILES) **53,624**

LARGEST
CITY (SIZE) **JACKSONVILLE**

POPULATION
(2019) **21,208,589**

ANNUAL POP
GROWTH RATE
(2010-2019) **1.4%**

EMPLOYMENT
(2019) **8,884,065**

ANNUAL EMP
GROWTH RATE
(2010-2019) **2.8%**

*Bureau of Economic Business Research,
Bureau of Labor Statistics*

DOMESTIC IMPORTS

1	GEORGIA	\$44B
2	CALIFORNIA	\$29B
3	TEXAS	\$26B
4	ALABAMA	\$18B
5	ILLINOIS	\$18B

DOMESTIC EXPORTS

1	GEORGIA	\$22B
2	TEXAS	\$19B
3	CALIFORNIA	\$15B
4	NORTH CAROLINA	\$12B
5	NEW YORK	\$10B

INTERNATIONAL IMPORTS

1	CHINA	\$9.5B
2	JAPAN	\$6.5B
3	BRAZIL	\$6.4B
4	MEXICO	\$4.5B
5	CHILE	\$3.7B

INTERNATIONAL EXPORTS

1	BRAZIL	\$13.4B
2	COLOMBIA	\$4.2B
3	ARGENTINA	\$3.6B
4	DOMINICAN REPUBLIC	\$3.1B
5	CHILE	\$3B

TRANSPORTATION STATISTICS AND FREIGHT MOVEMENT BY MODE



83%
TONNAGE

71%
VALUE

123,104 Public roadway mileage
12,130 State Highway System (SHS) mileage
30.7M Daily truck miles traveled on SHS
98 Public truck parking facilities



3.5%
TONNAGE

2.9%
VALUE

15 Deepwater seaports
4.1M Twenty-foot equivalent units (TEUs)
16.8M Annual cruise passengers



6.7%
TONNAGE

1.8%
VALUE

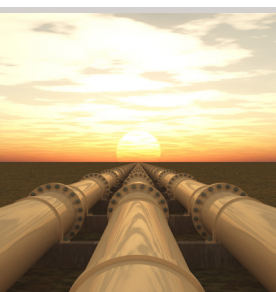
2,936 Miles of roads
6.9M Annual rail passenger traffic



0.1%
TONNAGE

5.4%
VALUE

129 Public use airports
20 Commercial service airports
2 Active spaceports



3.6%
TONNAGE

1%
VALUE

5,899 Miles of gas transmission and hazardous liquid pipelines



3.1%
TONNAGE

17.9%
VALUE

Includes shipments by multiple modes and by parcel delivery services, U.S. Postal Service, or couriers (capped at 150 pounds). This category is not limited to containerized or trailer-on-flatcar shipments.

FLORIDA COMMODITY FLOWS (2018-2045)



IMPORTS



WITHIN FL



EXPORTS

	2018	2045	2018	2045	2018	2045
TONNAGE	142M	190M	656M	761M	57M	103M
VALUE	\$321B	\$690B	\$402B	\$844B	\$180B	\$606B

Freight Analysis Framework (FAF) 4.5.1.



Rickey Fitzgerald
 Manager, Freight & Multimodal Operations
 Florida Department of Transportation
 605 Suwannee Street, Tallahassee, FL 32399
 Rickey.Fitzgerald@dot.state.fl.us
 850.414.4702