

FREIGHT AND LOGISTICS OVERVIEW

FEBRUARY 2021

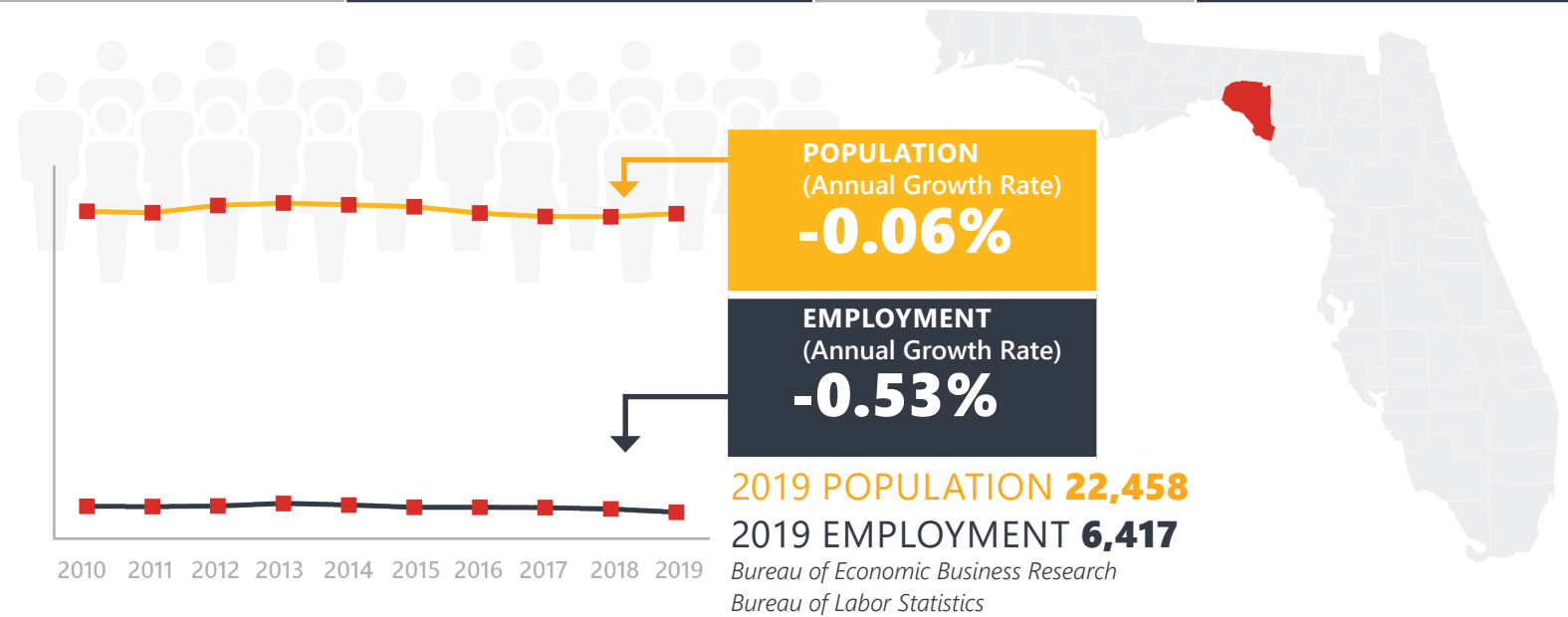
TAYLOR COUNTY



Mission: The department will provide a safe transportation system that ensures the mobility of people and goods, enhances economic prosperity, and preserves the quality of our environment and communities.

TAYLOR COUNTY HIGHLIGHTS

| | | | |
|-----------------------------|-------|---------------------|-------|
| "TREE CAPITAL OF THE SOUTH" | | AREA (SQ . MILES) | 1,232 |
| COUNTY SEAT | PERRY | LARGEST CITY (SIZE) | PERRY |



LARGEST INDUSTRY SECTORS BY EMPLOYMENT (2019)

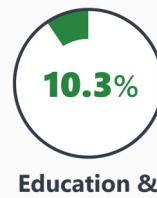
Office of Economic and Demographic Research



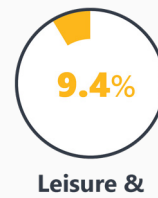
Manufacturing



Trade,
transportation
& utilities



Education &
health
services



Leisure &
hospitality



Construction

FASTEST GROWING INDUSTRIES (2010-2019)

| | | |
|--------------------------------------|------------|-----|
| PROFESSIONAL AND BUSINESS SERVICES | JOBS ADDED | 168 |
| LEISURE AND HOSPITALITY | | 111 |
| TRADE, TRANSPORTATION, AND UTILITIES | | 18 |
| NATURAL RESOURCES AND MINING | | 8 |

Bureau of Labor Statistics

DID YOU KNOW?

Each October, tens of thousands of visitors travel to Perry to remember their heritage at the Florida Forest Festival, a local tradition since 1955.

By the turn of the twentieth century, Taylor County was the home of a widely known and celebrated resort hotel built on the site of a sulfurous spring.

Spanning over 1,200 square miles, Taylor County is nestled in the "Big Bend" area of Florida and offers some of the best hunting and fishing in the state.

COMMODITY FLOW HIGHLIGHTS



IMPORTS

WITHIN COUNTY

EXPORTS

| | 2018 | 2045 | 2018 | 2045 | 2018 | 2045 |
|----------|-----------|-----------|------------|---------|-----------|-----------|
| Tonnage: | 0.72 M | 0.49 M | 148.20 K | 55.71 K | 3.85 M | 4.29 M |
| Value: | \$ 0.37 B | \$ 0.34 B | \$ 55.08 M | \$ 23 M | \$ 0.99 B | \$ 0.96 B |



TOP COMMODITY by Tonnage, 2018



| | |
|------------------------------------------------------|---------|
| Lumber or Wood Products | 471,559 |
| Waste or Scrap Materials | 68,799 |
| Pulp, Paper or Allied Products | 51,014 |
| Warehouse, Distribution Center and Drayage Movements | 37,240 |
| Petroleum or Coal Products | 33,307 |

| | |
|--------------------------------|-----------|
| Nonmetallic Minerals | 1,806,461 |
| Pulp, Paper or Allied Products | 1,149,767 |
| Lumber or Wood Products | 792,988 |
| Fabricated Metal Products | 24,670 |
| Waste or Scrap Materials | 19,265 |



TOP COMMODITY by Value, 2018

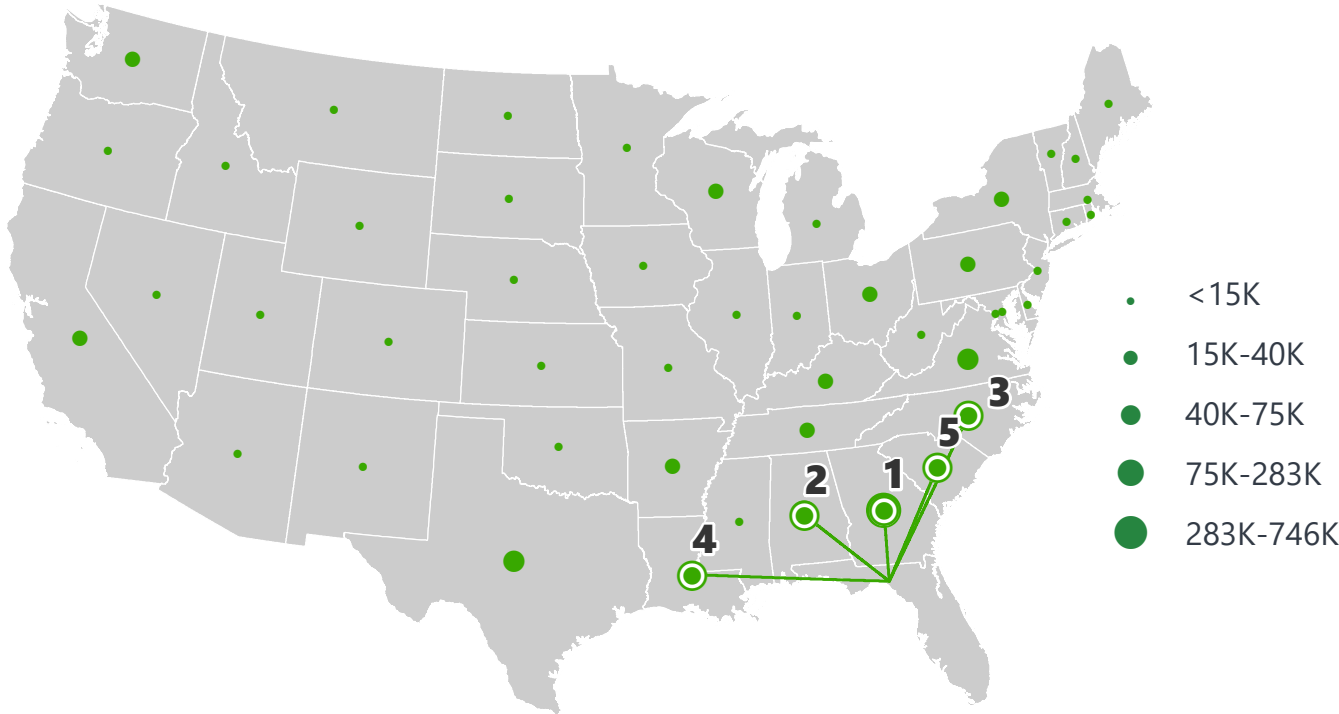


| | |
|------------------------------------------------------|----------------|
| Lumber or Wood Products | \$ 142,819,911 |
| Warehouse, Distribution Center and Drayage Movements | \$ 88,929,532 |
| Pulp, Paper or Allied Products | \$ 25,076,878 |
| Petroleum or Coal Products | \$ 19,451,410 |
| Waste or Scrap Materials | \$ 18,112,489 |

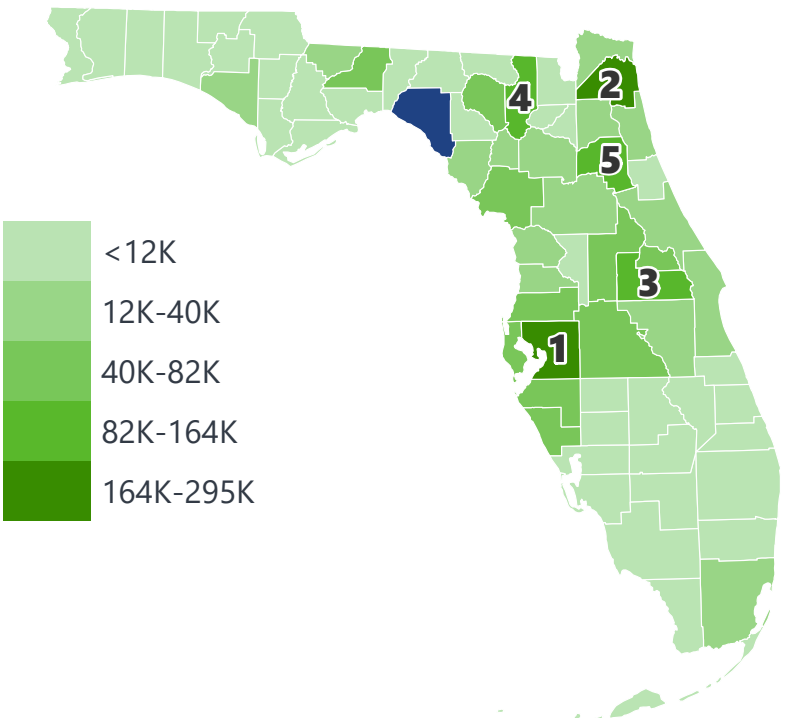
| | |
|------------------------------------------------------|----------------|
| Pulp, Paper or Allied Products | \$ 508,004,878 |
| Lumber or Wood Products | \$ 188,486,540 |
| Ordinance or Accessories | \$ 87,270,171 |
| Fabricated Metal Products | \$ 76,201,892 |
| Warehouse, Distribution Center and Drayage Movements | \$ 75,414,130 |

TAYLOR COUNTY EXPORTS AND IMPORTS

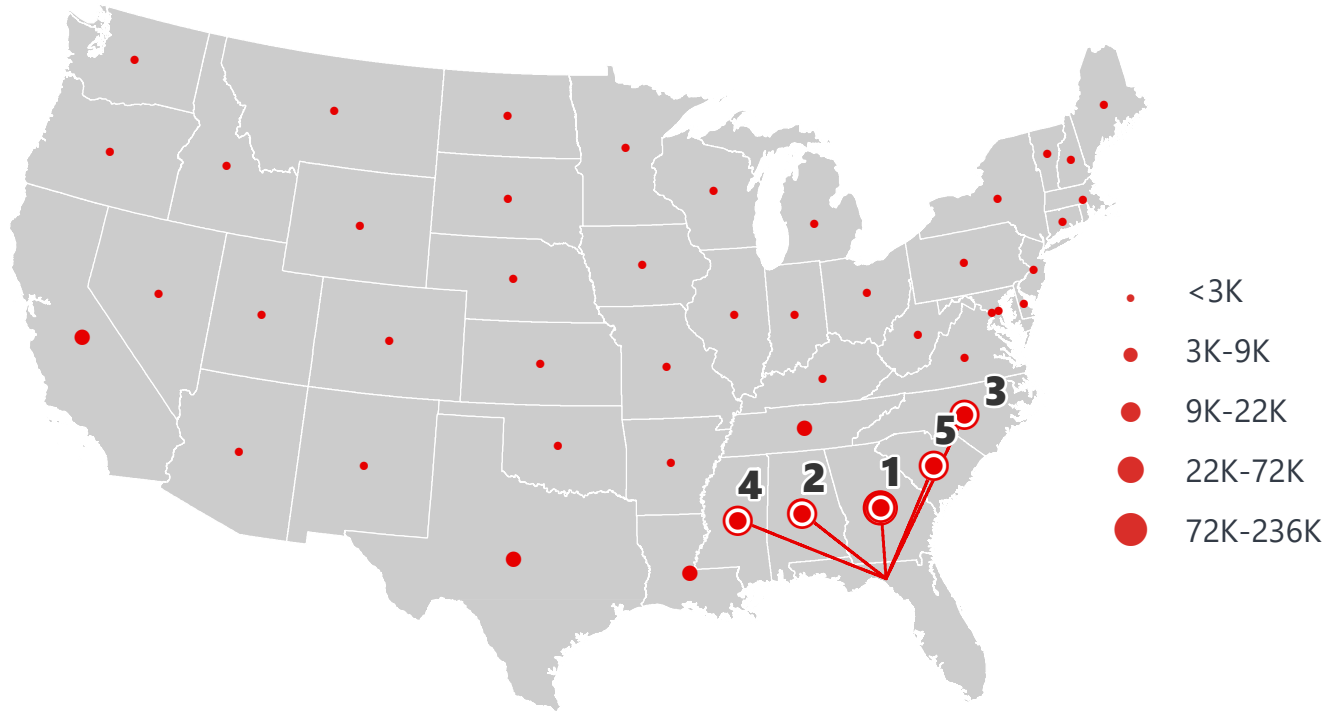
DOMESTIC EXPORTS (TONS)



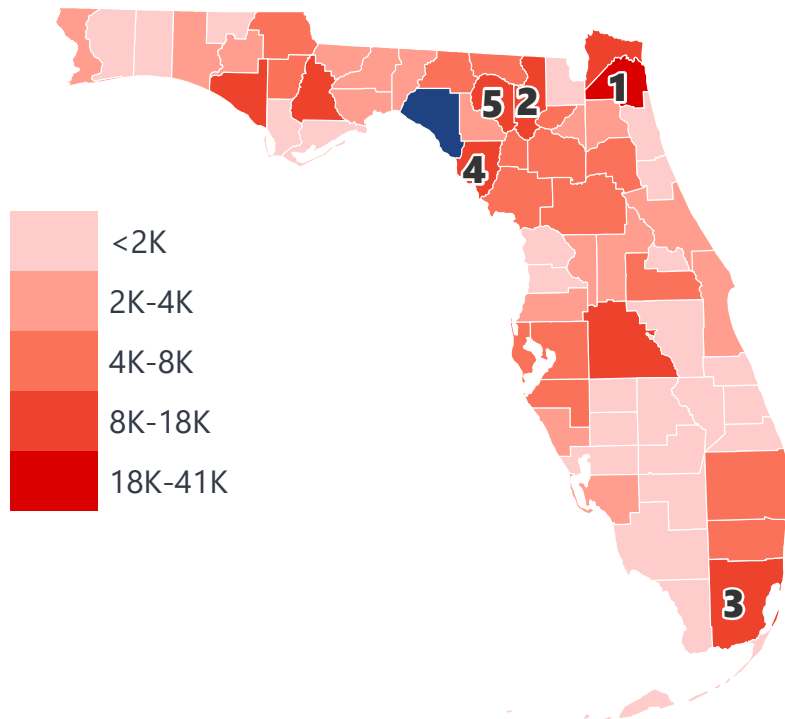
INTRASTATE EXPORTS (TONS)



DOMESTIC IMPORTS (TONS)



INTRASTATE IMPORTS (TONS)



DOMESTIC EXPORTS (TONNAGE)

| | | |
|---|----------------|---------|
| 1 | Georgia | 745,314 |
| 2 | Alabama | 283,309 |
| 3 | North Carolina | 75,231 |
| 4 | Louisiana | 56,166 |
| 5 | South Carolina | 55,928 |

INTRASTATE EXPORTS (TONNAGE)

| | | |
|---|--------------|---------|
| 1 | Hillsborough | 294,026 |
| 2 | Duval | 221,176 |
| 3 | Orange | 163,865 |
| 4 | Columbia | 140,647 |
| 5 | Putnam | 105,373 |

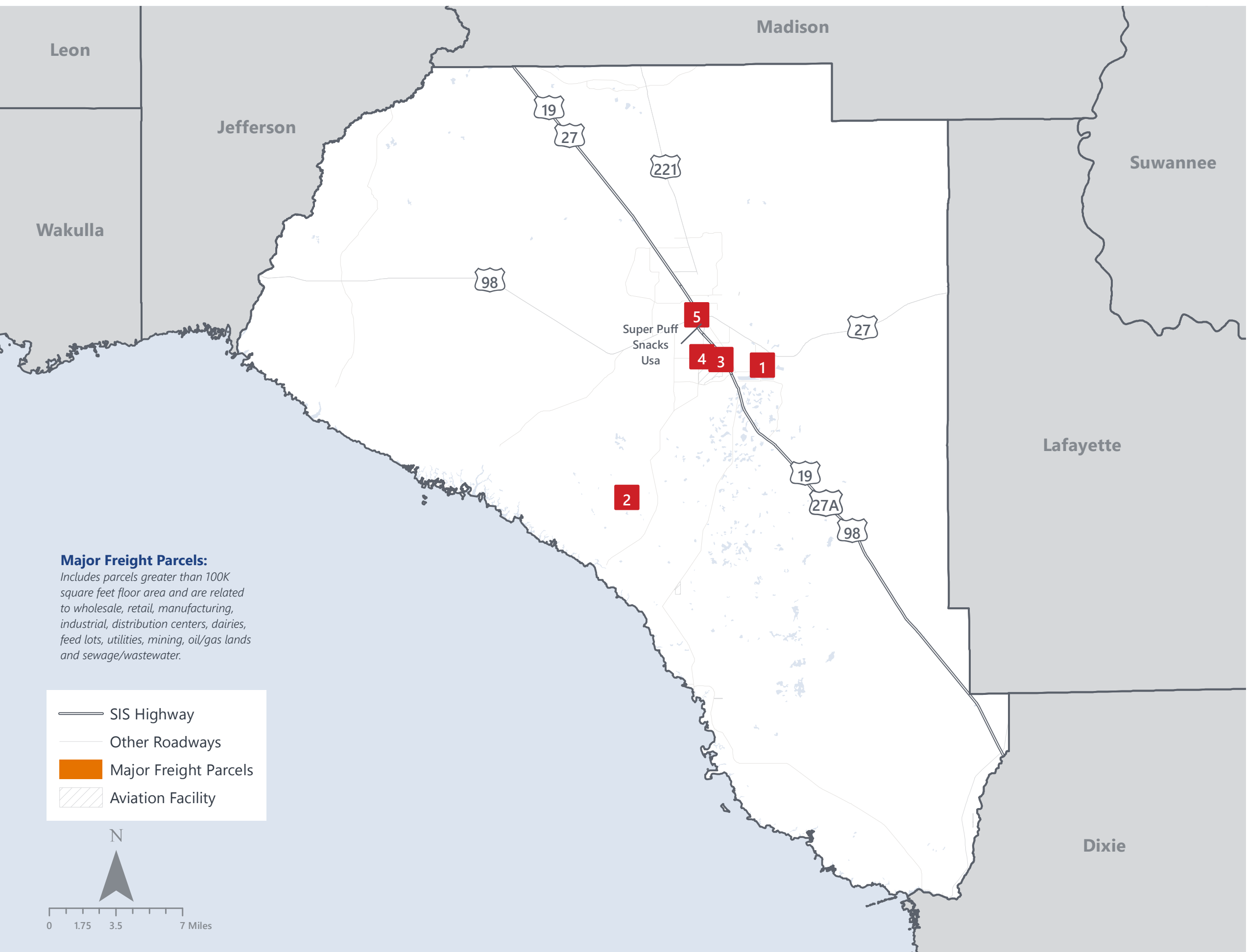
DOMESTIC IMPORTS (TONNAGE)

| | | |
|---|----------------|---------|
| 1 | Georgia | 235,528 |
| 2 | Alabama | 72,575 |
| 3 | North Carolina | 22,137 |
| 4 | Mississippi | 17,878 |
| 5 | South Carolina | 14,462 |

INTRASTATE IMPORTS (TONNAGE)

| | | |
|---|------------|--------|
| 1 | Duval | 40,193 |
| 2 | Columbia | 17,546 |
| 3 | Miami-Dade | 17,058 |
| 4 | Dixie | 14,155 |
| 5 | Suwannee | 13,820 |

TAYLOR COUNTY FREIGHT INFRASTRUCTURE



LARGEST FREIGHT EMPLOYERS

| | | |
|---|------------------|---------|
| 1 | Foley Cellulose | 500-600 |
| 2 | Chemring | 300-400 |
| 3 | RDS Mfg. | 100-200 |
| 4 | Curt Mfg. | 100-200 |
| 5 | Perry Lumber Co. | 100-200 |

MAJOR FREIGHT LAND USES

0.7 M SQ.FT Floor Area

| | |
|--------|---------------------------------------|
| 38.45% | Light manufacturing |
| 32.38% | Warehousing and distribution centers |
| 15.48% | Other food processing |
| 5.23% | Lumber yards, sawmills, planing mills |
| 4.63% | Utilities |

147.3 M SQ.FT LAND AREA

| | |
|--------|---------------------------------------------|
| 26.09% | Sewage disposal and waste land |
| 23.42% | Utilities |
| 20.68% | Light manufacturing |
| 18.79% | Heavy industrial |
| 5.92% | Mining lands, petroleum lands, or gas lands |

Florida Department of Economic Opportunity, 2018
Florida Department of Revenue, 2019

MAJOR COUNTY COMMODITIES



IMPORTS



TOP COMMODITY by Tonnage, 2018 (relative to Florida)

| FL Rank | Commodity | % Florida Share |
|---------|--------------------------------|-----------------|
| 3 | Forest Products | 7.73% |
| 8 | Lumber or Wood Products | 3.51% |
| 10 | Ordnance or Accessories | 2.33% |
| 14 | Pulp, Paper or Allied Products | 1.42% |
| 32 | Waste or Scrap Materials | 0.44% |

EXPORTS



| FL Rank | Commodity | % Florida Share |
|---------|--------------------------------|-----------------|
| 1 | Ordnance or Accessories | 61.50% |
| 1 | Pulp, Paper or Allied Products | 20.55% |
| 2 | Lumber or Wood Products | 8.52% |
| 8 | Forest Products | 3.06% |
| 19 | Nonmetallic Minerals | 1.75% |

TOP COMMODITY by Value, 2018 (relative to Florida)

| FL Rank | Commodity | % Florida Share |
|---------|--------------------------------|-----------------|
| 3 | Forest Products | 7.19% |
| 10 | Ordnance or Accessories | 2.22% |
| 14 | Lumber or Wood Products | 1.82% |
| 24 | Pulp, Paper or Allied Products | 0.47% |
| 28 | Waste or Scrap Materials | 0.45% |

| FL Rank | Commodity | % Florida Share |
|---------|--------------------------------|-----------------|
| 1 | Ordnance or Accessories | 45.09% |
| 4 | Pulp, Paper or Allied Products | 9.07% |
| 8 | Lumber or Wood Products | 3.76% |
| 8 | Forest Products | 3.13% |
| 20 | Fabricated Metal Products | 1.39% |



TRANSPORTATION STATISTICS AND FREIGHT MOVEMENT BY MODE



57 K | Daily Truck Miles Traveled
- | Planning Time Index
917 | Public Roadway Mileage



129 Miles | Distance from closest major seaport (JAXPORT)



- | Class I Mainline Miles
- | Class II Mainline Miles
17.57 | Class III Mainline Miles (GFRR)



58 Miles | Distance from closest major airport (Tallahassee International Airport)

FLORIDA HIGHLIGHTS

3rd most populous US State

\$1T Gross Domestic Product

4th Largest US Economy and **17th Largest** Economy in World

Nation's **3rd largest** workforce

1 in 5 U.S. exporters are located in Florida

\$153B International Trade

1.76M jobs supported by Trade, Transportation and Utilities industry sector

1.25M jobs supported by Leisure and Hospitality industry sector

131M annual visitors

CAPITAL **TALLAHASSEE**

AREA (SQ. MILES) **53,624**

LARGEST CITY (SIZE) **JACKSONVILLE**

POPULATION (2019) **21,208,589**

ANNUAL POP GROWTH RATE (2010-2019) **1.4%**

EMPLOYMENT (2019) **8,884,065**

ANNUAL EMP GROWTH RATE (2010-2019) **2.8%**

*Bureau of Economic Business Research,
Bureau of Labor Statistics*

DOMESTIC IMPORTS

| | | |
|----------|-------------------|-------|
| 1 | GEORGIA | \$44B |
| 2 | CALIFORNIA | \$29B |
| 3 | TEXAS | \$26B |
| 4 | ALABAMA | \$18B |
| 5 | ILLINOIS | \$18B |

DOMESTIC EXPORTS

| | | |
|----------|-----------------------|-------|
| 1 | GEORGIA | \$22B |
| 2 | TEXAS | \$19B |
| 3 | CALIFORNIA | \$15B |
| 4 | NORTH CAROLINA | \$12B |
| 5 | NEW YORK | \$10B |

INTERNATIONAL IMPORTS

| | | |
|----------|---------------|--------|
| 1 | CHINA | \$9.5B |
| 2 | JAPAN | \$6.5B |
| 3 | BRAZIL | \$6.4B |
| 4 | MEXICO | \$4.5B |
| 5 | CHILE | \$3.7B |

INTERNATIONAL EXPORTS

| | | |
|----------|---------------------------|---------|
| 1 | BRAZIL | \$13.4B |
| 2 | COLOMBIA | \$4.2B |
| 3 | ARGENTINA | \$3.6B |
| 4 | DOMINICAN REPUBLIC | \$3.1B |
| 5 | CHILE | \$3B |

TRANSPORTATION STATISTICS AND FREIGHT MOVEMENT BY MODE



83%
TONNAGE

71%
VALUE

123,104 Public roadway mileage
12,130 State Highway System (SHS) mileage
30.7M Daily truck miles traveled on SHS
98 Public truck parking facilities



3.5%
TONNAGE

2.9%
VALUE

15 Deepwater seaports
4.1M Twenty-foot equivalent units (TEUs)
16.8M Annual cruise passengers



6.7%
TONNAGE

1.8%
VALUE

2,936 Miles of roads
6.9M Annual rail passenger traffic



0.1%
TONNAGE

5.4%
VALUE

129 Public use airports
20 Commercial service airports
2 Active spaceports



3.6%
TONNAGE

1%
VALUE

5,899 Miles of gas transmission and hazardous liquid pipelines



3.1%
TONNAGE

17.9%
VALUE

Includes shipments by multiple modes and by parcel delivery services, U.S. Postal Service, or couriers (capped at 150 pounds). This category is not limited to containerized or trailer-on-flatcar shipments.

FLORIDA COMMODITY FLOWS (2018-2045)



IMPORTS



WITHIN FL



EXPORTS

| | 2018 | 2045 | 2018 | 2045 | 2018 | 2045 |
|---------|--------|--------|--------|--------|--------|--------|
| TONNAGE | 142M | 190M | 656M | 761M | 57M | 103M |
| VALUE | \$321B | \$690B | \$402B | \$844B | \$180B | \$606B |

Freight Analysis Framework (FAF) 4.5.1.



Rickey Fitzgerald
 Manager, Freight & Multimodal Operations
 Florida Department of Transportation
 605 Suwannee Street, Tallahassee, FL 32399
 Rickey.Fitzgerald@dot.state.fl.us
 850.414.4702