

FREIGHT AND LOGISTICS OVERVIEW

FEBRUARY 2021

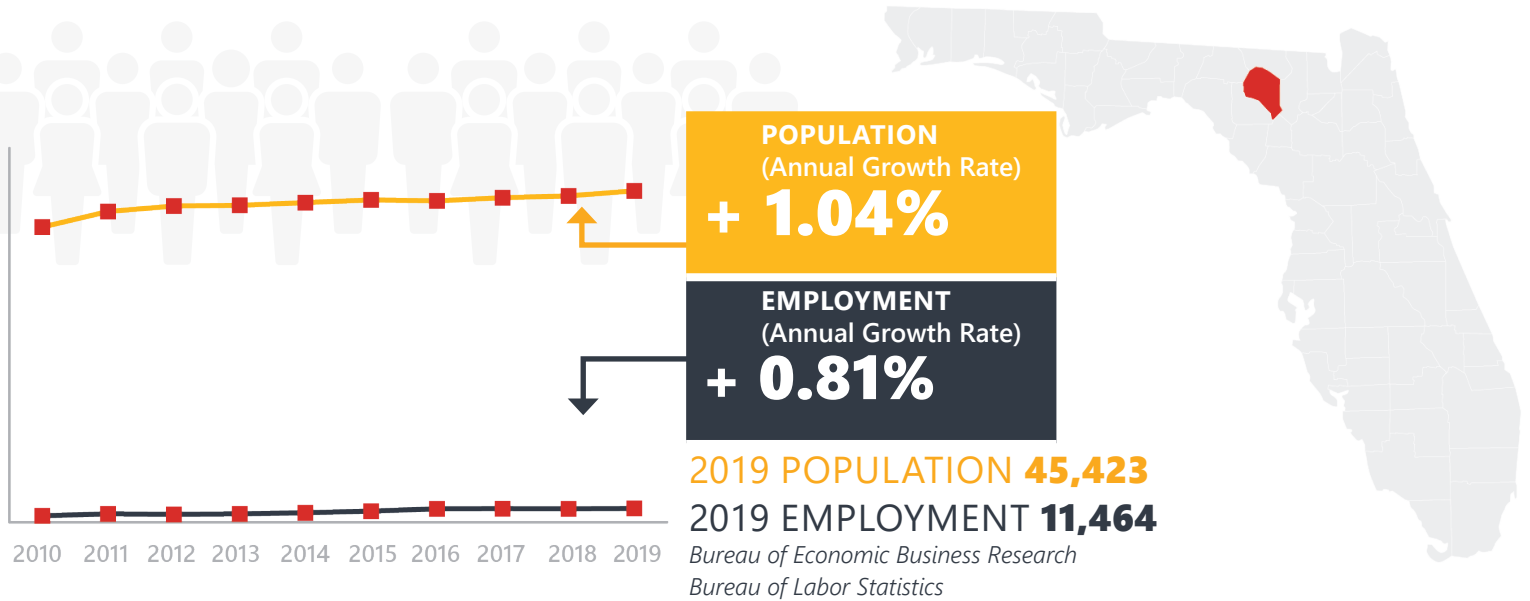
SUWANNEE COUNTY



Mission: The department will provide a safe transportation system that ensures the mobility of people and goods, enhances economic prosperity, and preserves the quality of our environment and communities.

SUWANNEE COUNTY HIGHLIGHTS

"FRESHWATER DIVING CAPITAL OF AMERICA"		AREA (SQ . MILES)	692
COUNTY SEAT	LIVE OAK	LARGEST CITY (SIZE)	LIVE OAK



LARGEST INDUSTRY SECTORS BY EMPLOYMENT (2019)

Office of Economic and Demographic Research



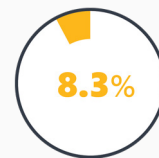
Trade, transportation & utilities



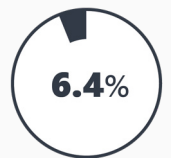
Manufacturing



Education & health services



Leisure & hospitality



Natural resources and mining

FASTEST GROWING INDUSTRIES (2010-2019)

MANUFACTURING	JOBS ADDED	358
TRADE, TRANSPORTATION, AND UTILITIES		302
CONSTRUCTION		221
LEISURE AND HOSPITALITY		132
PROFESSIONAL AND BUSINESS SERVICES		78

Bureau of Labor Statistics

DID YOU KNOW?

A number of large springs are found in the county, among them Newland (Falmouth) Springs near Falmouth, Branford, Little River, Royal, Peacock, Suwannee Springs, and Sulfur Springs.

The county is home to Spirit of the Suwannee Music Park, the Wellborn Blueberry Festival and Christmas on the Square events.

170 miles of navigable waters of the Suwannee River are home to more than 62 species of freshwater fish and underwater caves. More than 250 species of birds frequent the river basin.

COMMODITY FLOW HIGHLIGHTS



IMPORTS

WITHIN COUNTY

EXPORTS

2018

2045

2018

2045

2018

2045

Tonnage:	1.51 M	1.93 M	155.76 K	195.70 K	3.54 M	5.10 M
Value:	\$ 0.74 B	\$ 0.78 B	\$ 79.06 M	\$ 77.86 M	\$ 1.06 B	\$ 1.48 B



TOP COMMODITY by Tonnage, 2018



Nonmetallic Minerals	347,836
Lumber or Wood Products	308,658
Farm Products	305,362
Food or Kindred Products	161,800
Clay, Concrete, Glass, Stone	113,318

Nonmetallic Minerals	2,203,080
Lumber or Wood Products	439,440
Farm Products	377,950
Clay, Concrete, Glass, Stone	238,221
Food or Kindred Products	192,170



TOP COMMODITY by Value, 2018

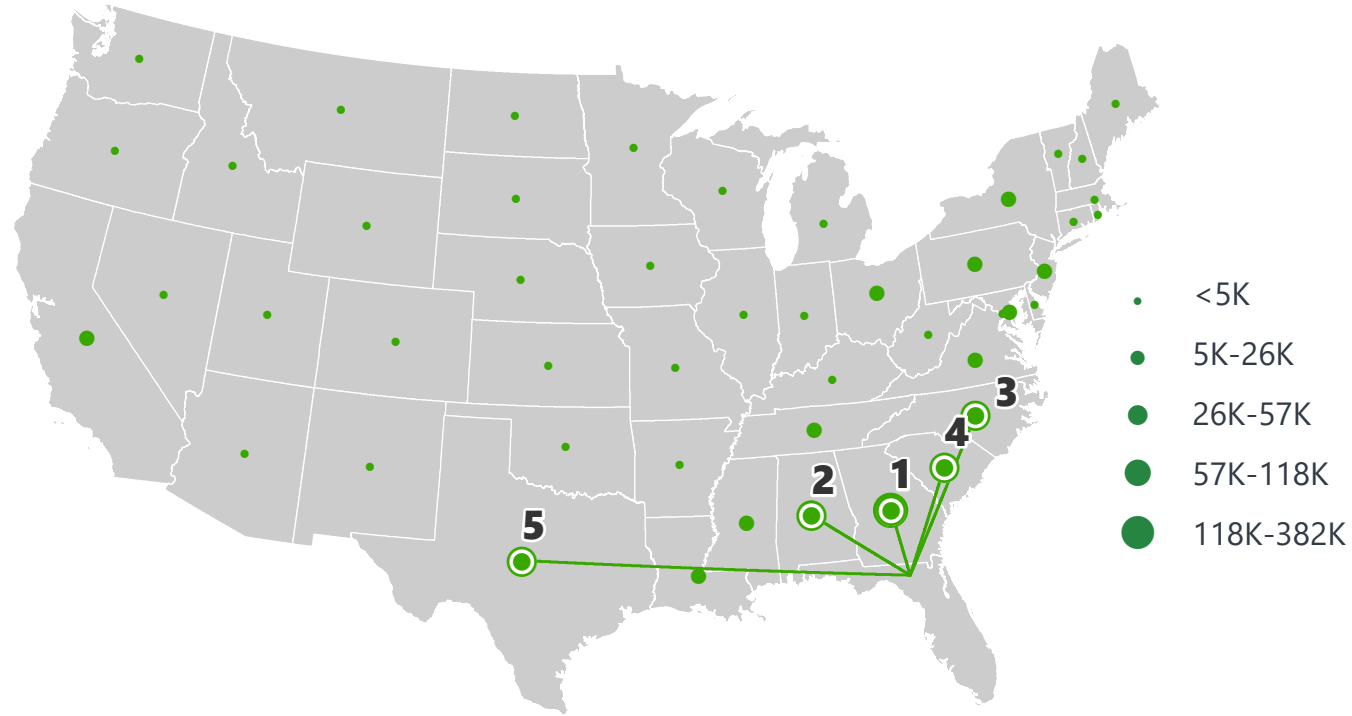


Farm Products	\$ 321,547,716
Food or Kindred Products	\$ 115,599,461
Warehouse, Distribution Center and Drayage Movements	\$ 84,405,681
Lumber or Wood Products	\$ 72,019,267
Petroleum or Coal Products	\$ 46,404,397

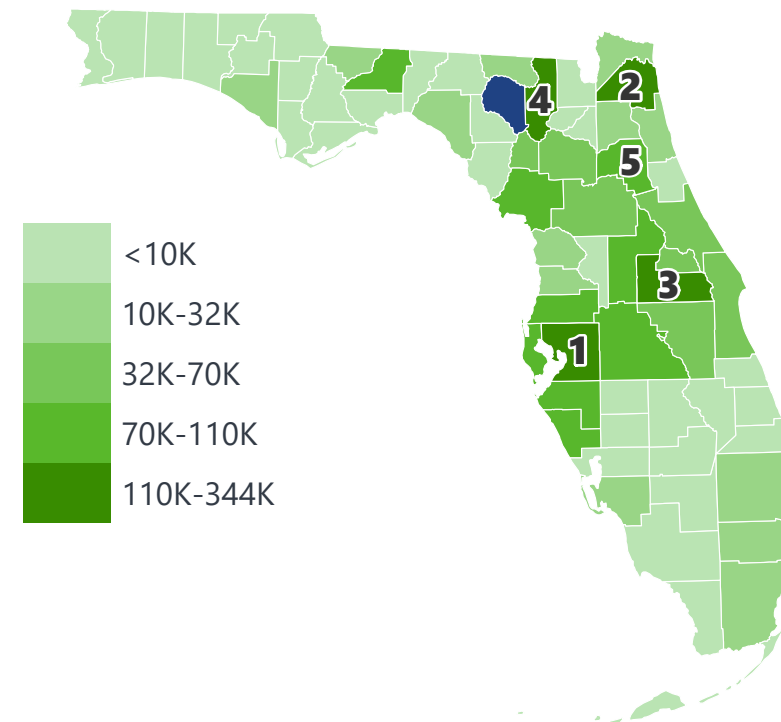
Farm Products	\$ 421,823,645
Food or Kindred Products	\$ 292,695,291
Lumber or Wood Products	\$ 251,486,882
Clay, Concrete, Glass, Stone	\$ 25,324,748
Waste or Scrap Materials	\$ 25,004,711

SUWANNEE COUNTY EXPORTS AND IMPORTS

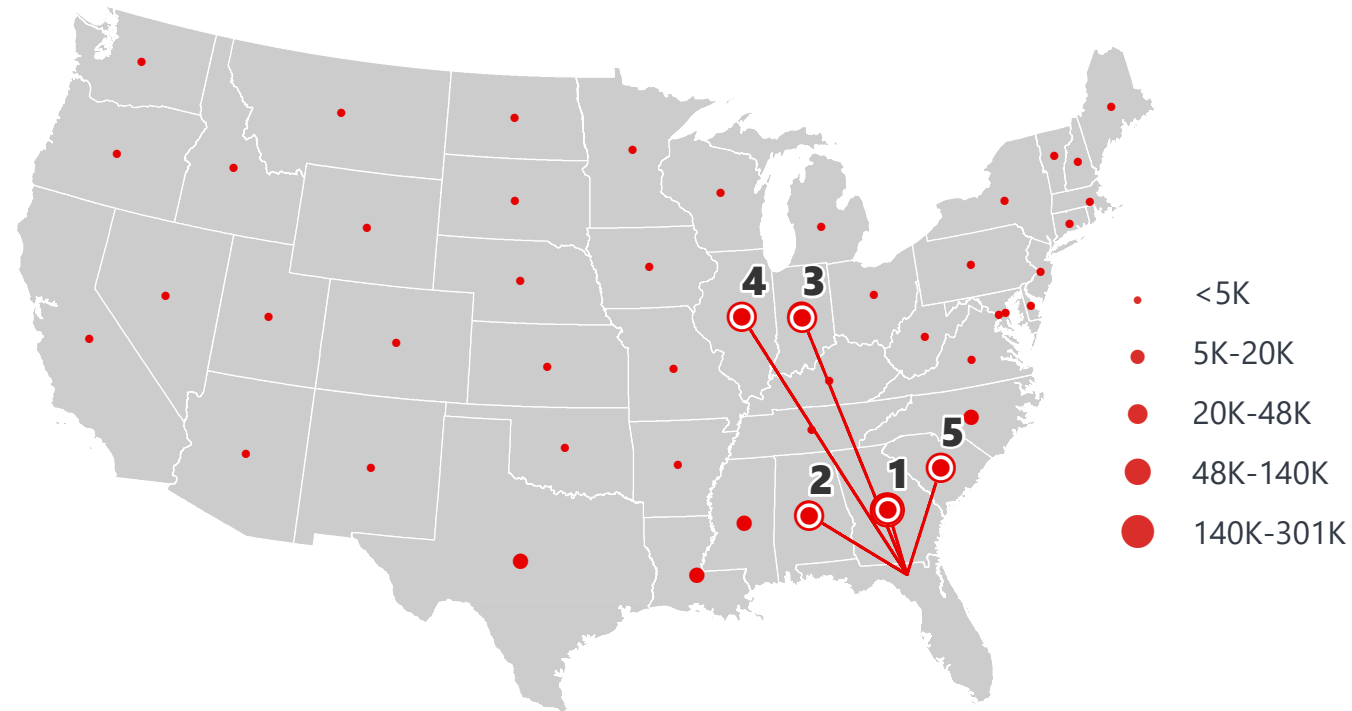
DOMESTIC EXPORTS (TONS)



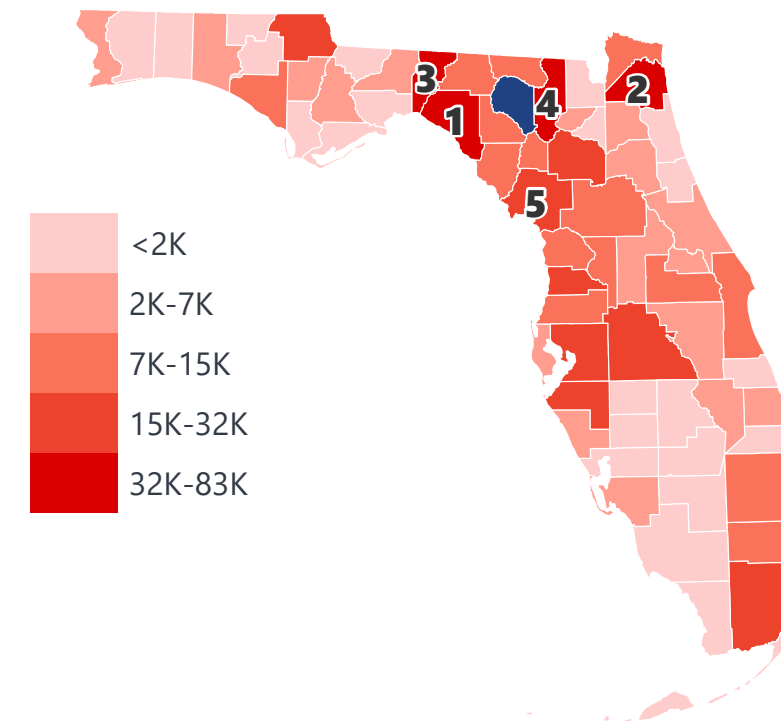
INTRASTATE EXPORTS (TONS)



DOMESTIC IMPORTS (TONS)



INTRASTATE IMPORTS (TONS)



DOMESTIC EXPORTS (TONNAGE)

1	Georgia	381,241
2	Alabama	118,964
3	North Carolina	57,471
4	South Carolina	51,072
5	Texas	26,392

INTRASTATE EXPORTS (TONNAGE)

1	Hillsborough	343,576
2	Duval	295,519
3	Orange	242,556
4	Columbia	231,271
5	Putnam	110,887

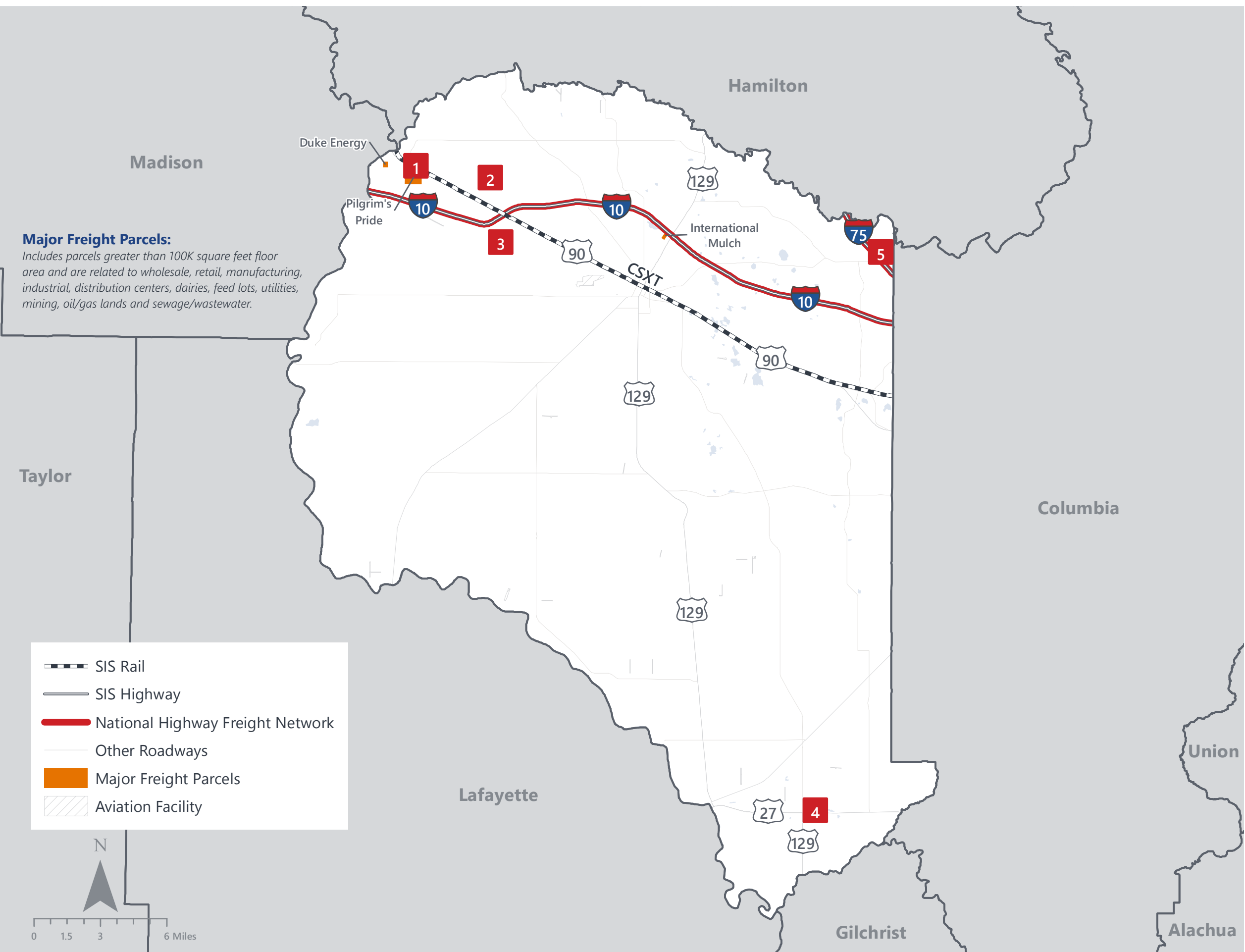
DOMESTIC IMPORTS (TONNAGE)

1	Georgia	300,475
2	Alabama	139,982
3	Indiana	130,411
4	Illinois	48,725
5	South Carolina	33,611

INTRASTATE IMPORTS (TONNAGE)

1	Taylor	82,194
2	Duval	77,055
3	Jefferson	57,402
4	Columbia	51,294
5	Levy	31,901

SUWANNEE COUNTY FREIGHT INFRASTRUCTURE



LARGEST FREIGHT EMPLOYERS

1	Pilgrims Pride	1K-2K
2	Klausner Lumber	300-400
3	Shenandoah Dairy	100-200
4	Suwannee Cement	50-100
5	H&M Bay Inc.	50-100

MAJOR FREIGHT LAND USES

1.5 M SQ.FT Floor Area

40.09%	Light manufacturing
37.73%	Warehousing and distribution centers
17.23%	Utilities
3.39%	Lumber yards, sawmills, planing mills
0.92%	Open storage

68.2 M SQ.FT LAND AREA

45.97%	Mining lands, petroleum lands, or gas lands
24.14%	Light manufacturing
10.49%	Warehousing and distribution centers
7.49%	Lumber yards, sawmills, planing mills
6.67%	Utilities

Florida Department of Economic Opportunity, 2018
Florida Department of Revenue, 2019

MAJOR COUNTY COMMODITIES



IMPORTS



TOP COMMODITY by Tonnage, 2018 (relative to Florida)

FL Rank	Commodity	% Florida Share
5	Forest Products	5.65%
13	Lumber or Wood Products	2.30%
10	Farm Products	2.05%
25	Waste or Scrap Materials	0.70%
30	Food or Kindred Products	0.63%

EXPORTS



FL Rank	Commodity	% Florida Share
6	Lumber or Wood Products	4.72%
13	Farm Products	2.71%
14	Nonmetallic Minerals	2.13%
13	Food or Kindred Products	1.25%
16	Forest Products	1.25%

TOP COMMODITY by Value, 2018 (relative to Florida)

FL Rank	Commodity	% Florida Share
7	Forest Products	5.22%
8	Farm Products	3.75%
24	Lumber or Wood Products	0.92%
26	Waste or Scrap Materials	0.52%
39	Nonmetallic Minerals	0.33%

FL Rank	Commodity	% Florida Share
4	Lumber or Wood Products	5.02%
6	Farm Products	4.72%
12	Food or Kindred Products	1.91%
16	Nonmetallic Minerals	1.57%
19	Forest Products	1.19%



TRANSPORTATION STATISTICS AND FREIGHT MOVEMENT BY MODE



96.13%
TONNAGE
98.41%
VALUE

260 K | Daily Truck Miles Traveled
1.19 | Planning Time Index
1,547 | Public Roadway Mileage



0.00%
TONNAGE
0.00%
VALUE

88 Miles | Distance from closest major seaport (JAXPORT)



3.86%
TONNAGE
1.56%
VALUE

23.38 | Class I Mainline Miles (CSX)
- Class II Mainline Miles
- Class III Mainline Miles



0.00%
TONNAGE
0.00%
VALUE

69 Miles | Distance from closest major airport (Gainesville Regional Airport)

FLORIDA HIGHLIGHTS

3rd most populous US State
\$1T Gross Domestic Product
4th Largest US Economy and 17th Largest Economy in World
Nation's 3rd largest workforce
1 in 5 U.S. exporters are located in Florida
\$153B International Trade
1.76M jobs supported by Trade, Transportation and Utilities industry sector
1.25M jobs supported by Leisure and Hospitality industry sector
131M annual visitors

CAPITAL	TALLAHASSEE
AREA (SQ . MILES)	53,624
LARGEST CITY (SIZE)	JACKSONVILLE
POPULATION (2019)	21,208,589
ANNUAL POP GROWTH RATE (2010-2019)	1.4%
EMPLOYMENT (2019)	8,884,065
ANNUAL EMP GROWTH RATE (2010-2019)	2.8%

Bureau of Economic Business Research, Bureau of Labor Statistics

DOMESTIC IMPORTS

1	GEORGIA	\$44B
2	CALIFORNIA	\$29B
3	TEXAS	\$26B
4	ALABAMA	\$18B
5	ILLINOIS	\$18B

INTERNATIONAL IMPORTS

1	CHINA	\$9.5B
2	JAPAN	\$6.5B
3	BRAZIL	\$6.4B
4	MEXICO	\$4.5B
5	CHILE	\$3.7B

DOMESTIC EXPORTS

1	GEORGIA	\$22B
2	TEXAS	\$19B
3	CALIFORNIA	\$15B
4	NORTH CAROLINA	\$12B
5	NEW YORK	\$10B

INTERNATIONAL EXPORTS

1	BRAZIL	\$13.4B
2	COLOMBIA	\$4.2B
3	ARGENTINA	\$3.6B
4	DOMINICAN REPUBLIC	\$3.1B
5	CHILE	\$3B

TRANSPORTATION STATISTICS AND FREIGHT MOVEMENT BY MODE



83%
TONNAGE

71%
VALUE

- 123,104** Public roadway mileage
- 12,130** State Highway System (SHS) mileage
- 30.7M** Daily truck miles traveled on SHS
- 98** Public truck parking facilities



3.5%
TONNAGE

2.9%
VALUE

- 15** Deepwater seaports
- 4.1M** Twenty-foot equivalent units (TEUs)
- 16.8M** Annual cruise passengers



6.7%
TONNAGE

1.8%
VALUE

- 2,936** Miles of roads
- 6.9M** Annual rail passenger traffic



0.1%
TONNAGE

5.4%
VALUE

- 129** Public use airports
- 20** Commercial service airports
- 2** Active spaceports



3.6%
TONNAGE

1%
VALUE

- 5,899** Miles of gas transmission and hazardous liquid pipelines



3.1%
TONNAGE

17.9%
VALUE

Includes shipments by multiple modes and by parcel delivery services, U.S. Postal Service, or couriers (capped at 150 pounds). This category is not limited to containerized or trailer-on-flatcar shipments.

FLORIDA COMMODITY FLOWS (2018-2045)



IMPORTS



WITHIN FL



EXPORTS

	2018	2045	2018	2045	2018	2045
TONNAGE	142M	190M	656M	761M	57M	103M
VALUE	\$321B	\$690B	\$402B	\$844B	\$180B	\$606B

Freight Analysis Framework (FAF) 4.5.1.



Rickey Fitzgerald
 Manager, Freight & Multimodal Operations
 Florida Department of Transportation
 605 Suwannee Street, Tallahassee, FL 32399
 Rickey.Fitzgerald@dot.state.fl.us
 850.414.4702