

# FREIGHT AND LOGISTICS OVERVIEW

FEBRUARY 2021

# ST. LUCIE COUNTY



*Mission: The department will provide a safe transportation system that ensures the mobility of people and goods, enhances economic prosperity, and preserves the quality of our environment and communities.*

# ST. LUCIE COUNTY HIGHLIGHTS

**"VERO BEACH TO STUART"**

AREA (SQ . MILES)

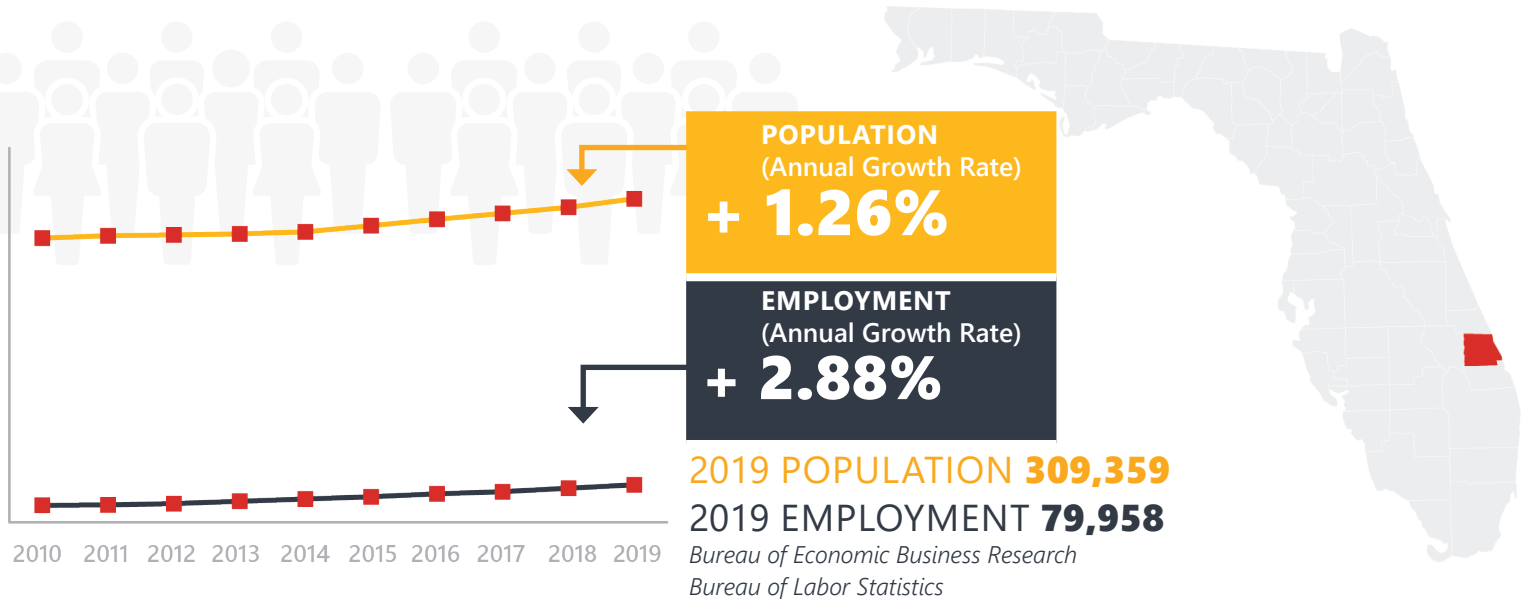
**688**

COUNTY SEAT

**FORT PIERCE**

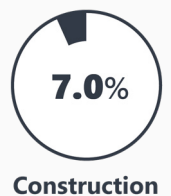
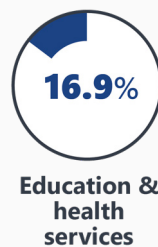
LARGEST CITY (SIZE)

**PORT ST. LUCIE**



## LARGEST INDUSTRY SECTORS BY EMPLOYMENT (2019)

*Office of Economic and Demographic Research*



## FASTEST GROWING INDUSTRIES (2010-2019)

PROFESSIONAL AND BUSINESS SERVICES	JOBS ADDED	3,902
EDUCATION AND HEALTH SERVICES		3,386
LEISURE AND HOSPITALITY		3,291
CONSTRUCTION		2,216
TRADE, TRANSPORTATION, AND UTILITIES		2,164

*Bureau of Labor Statistics*

## DID YOU KNOW?

St. Lucie is home to over 21 miles of beaches.

For over 30 years, Clover Park in Port St. Lucie has been the spring-training home for the New York Mets. Every spring, thousands of visitors come to see the Mets train and play.

The world famous Indian River Lagoon is located in St. Lucie County, which has more than 4,300 species of plants and animals.



# COMMODITY FLOW HIGHLIGHTS



## IMPORTS

## WITHIN COUNTY

## EXPORTS

	2018	2045	2018	2045	2018	2045
Tonnage:	3.94 M	4.19 M	93.02 K	113.25 K	3.20 M	6.09 M
Value:	\$ 3.05 B	\$ 3.76 B	\$ 74.36 M	\$ 96.45 M	\$ 1.33 B	\$ 2.41 B



### TOP COMMODITY by Tonnage, 2018



Nonmetallic Minerals	1,631,127
Petroleum or Coal Products	531,188
Clay, Concrete, Glass, Stone	529,477
Warehouse, Distribution Center and Drayage Movements	426,374
Food or Kindred Products	208,568

Clay, Concrete, Glass, Stone	904,395
Nonmetallic Minerals	663,935
Waste or Scrap Materials	505,630
Food or Kindred Products	340,645
Chemicals or Allied Products	272,122



### TOP COMMODITY by Value, 2018

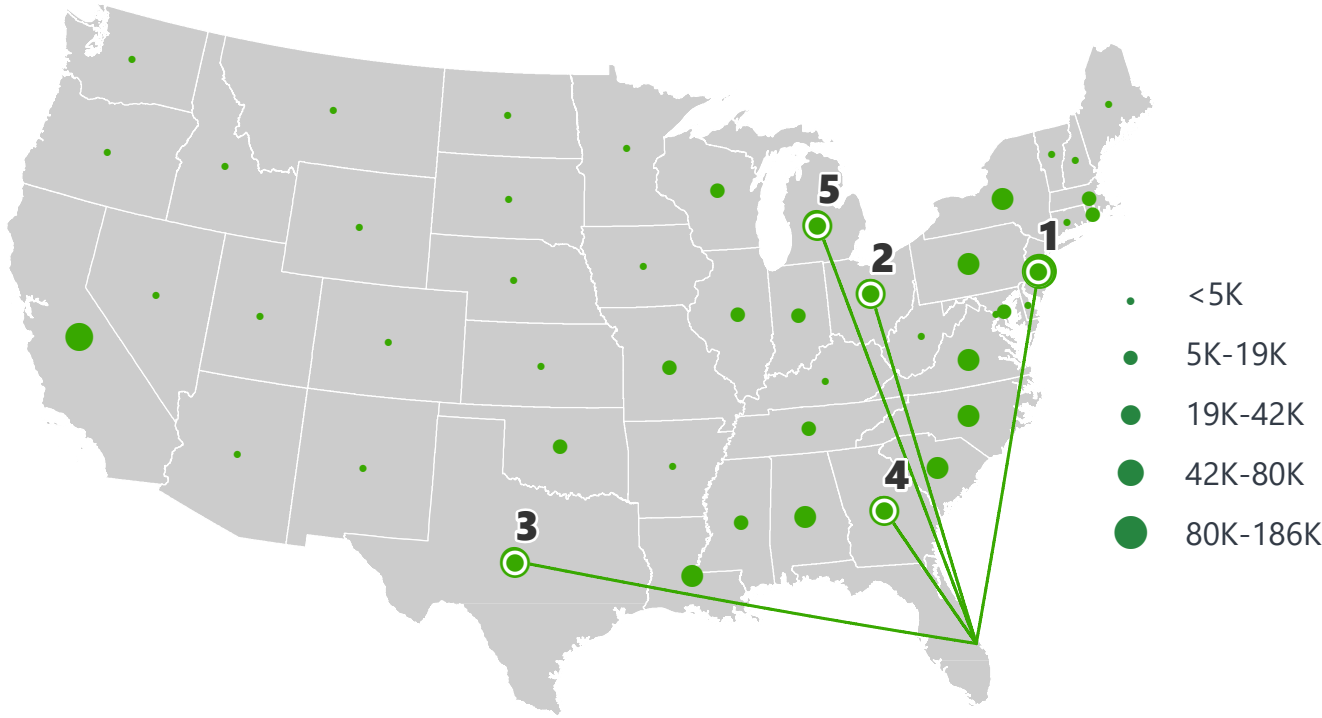


Misc. Mixed Shipments	\$ 614,039,641
Warehouse, Distribution Center and Drayage Movements	\$ 531,693,217
Transportation Equipment	\$ 345,195,888
Petroleum or Coal Products	\$ 281,947,604
Food or Kindred Products	\$ 274,280,201

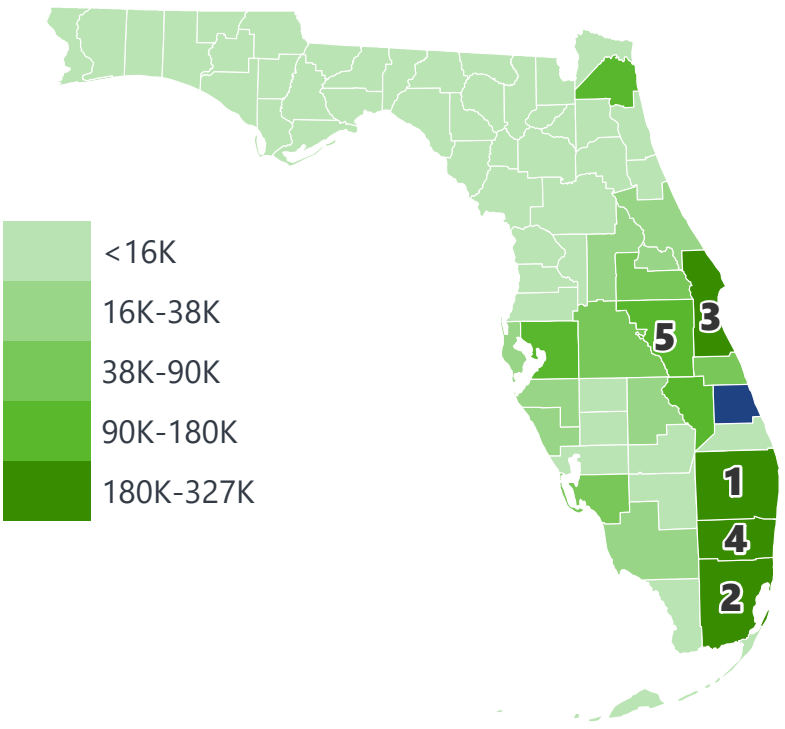
Warehouse, Distribution Center and Drayage Movements	\$ 333,866,884
Food or Kindred Products	\$ 298,928,187
Waste or Scrap Materials	\$ 148,881,670
Clay, Concrete, Glass, Stone	\$ 122,076,979
Chemicals or Allied Products	\$ 99,405,928

# ST. LUCIE COUNTY EXPORTS AND IMPORTS

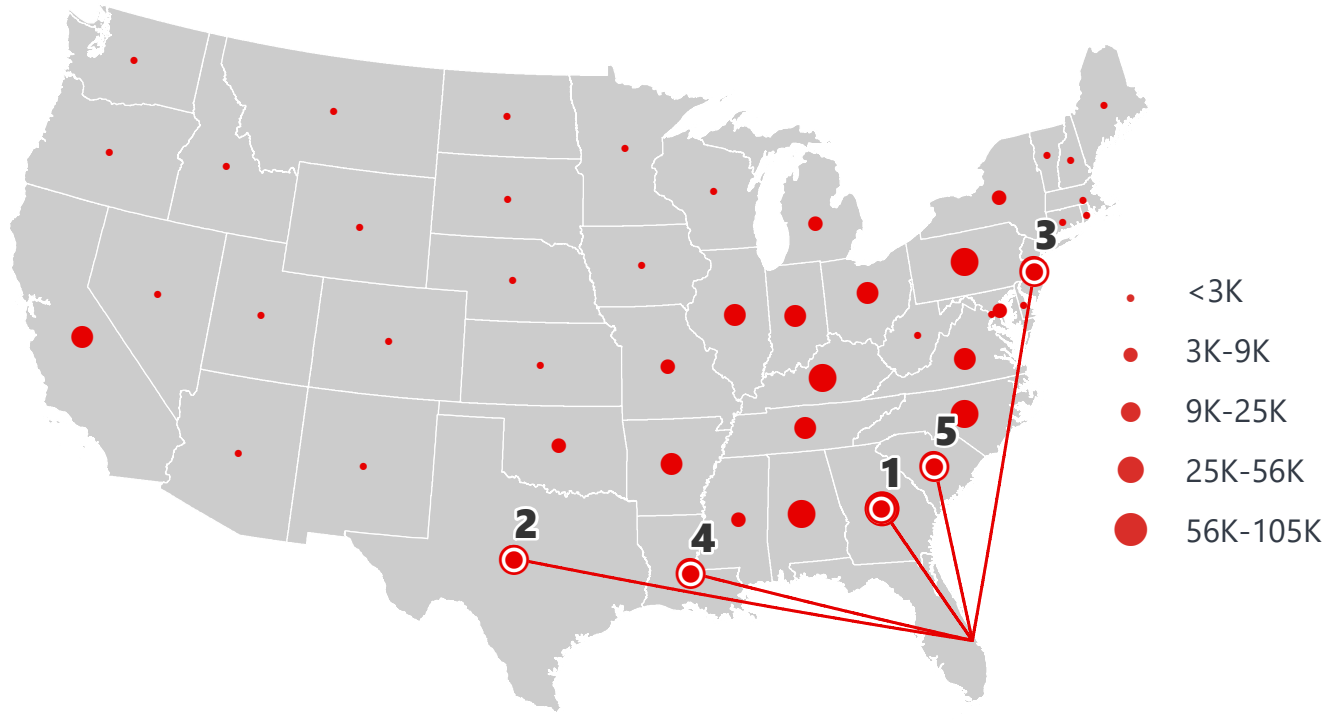
DOMESTIC EXPORTS (TONS)



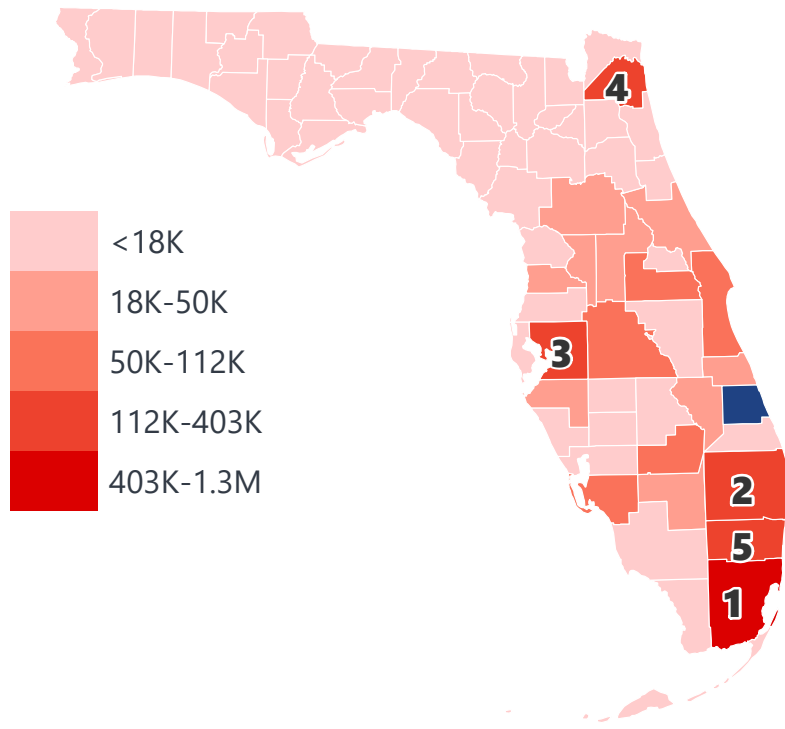
INTRASTATE EXPORTS (TONS)



DOMESTIC IMPORTS (TONS)



INTRASTATE IMPORTS (TONS)



## DOMESTIC EXPORTS (TONNAGE)

1	New Jersey	185,608
2	Ohio	80,355
3	Texas	64,557
4	Georgia	61,995
5	Michigan	59,555

## INTRASTATE EXPORTS (TONNAGE)

1	Palm Beach	326,758
2	Miami-Dade	296,987
3	Brevard	269,278
4	Broward	226,158
5	Osceola	181,208

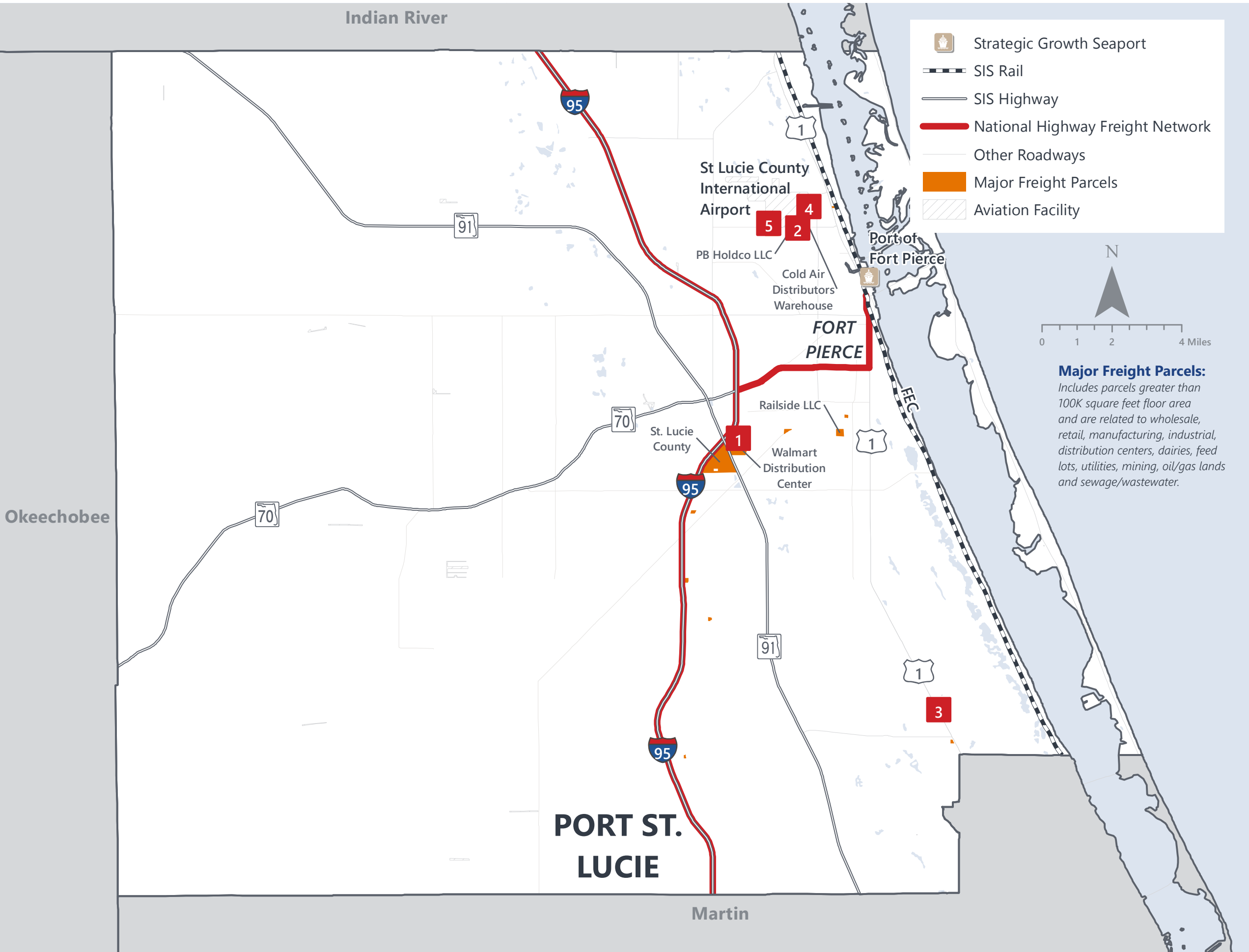
## DOMESTIC IMPORTS (TONNAGE)

1	Georgia	104,180
2	Texas	56,241
3	New Jersey	35,995
4	Louisiana	34,288
5	South Carolina	34,182

## INTRASTATE IMPORTS (TONNAGE)

1	Miami-Dade	1,271,670
2	Palm Beach	402,892
3	Hillsborough	257,107
4	Duval	248,945
5	Broward	240,259

# ST. LUCIE COUNTY FREIGHT INFRASTRUCTURE



## LARGEST FREIGHT EMPLOYERS

1	Walmart DC	1K-2K
2	S2 Yachts	300-400
3	Express Scripts	300-400
4	Maverick Boat	300-400
5	A1 Roof Trusses	200-300

## MAJOR FREIGHT LAND USES

### 15.3 M SQ.FT Floor Area

56.42%	Warehousing and distribution centers
22.38%	Light manufacturing
3.73%	Heavy industrial
3.28%	Fruit, vegetable and meat packing plants
2.85%	Utilities

### 339 M SQ.FT LAND AREA

36.99%	Warehousing and distribution centers
27.74%	Utilities
16.38%	Sewage disposal and waste land
6.68%	Light manufacturing
2.70%	Mining lands, petroleum lands, or gas lands

Florida Department of Economic Opportunity, 2018  
Florida Department of Revenue, 2019



# MAJOR COUNTY COMMODITIES



## IMPORTS



### TOP COMMODITY by Tonnage, 2018 (relative to Florida)

FL Rank	Commodity	% Florida Share
5	Apparel or Related Products	4.84%
8	Misc. Mixed Shipments	1.77%
20	Nonmetallic Minerals	1.36%
21	Clay, Concrete, Glass, Stone	1.27%
19	Marine Products	1.21%

## EXPORTS



FL Rank	Commodity	% Florida Share
5	Leather or Leather Products	5.91%
6	Shipping Containers	2.60%
10	Food or Kindred Products	2.22%
10	Chemicals or Allied Products	2.00%
15	Waste or Scrap Materials	1.90%

### TOP COMMODITY by Value, 2018 (relative to Florida)

FL Rank	Commodity	% Florida Share
7	Apparel or Related Products	3.54%
7	Misc. Mixed Shipments	1.75%
21	Marine Products	1.09%
21	Nonmetallic Minerals	1.05%
21	Farm Products	1.00%

FL Rank	Commodity	% Florida Share
5	Leather or Leather Products	3.77%
15	Waste or Scrap Materials	2.23%
11	Food or Kindred Products	1.95%
18	Clay, Concrete, Glass, Stone	1.61%
17	Forest Products	1.28%





# TRANSPORTATION STATISTICS AND FREIGHT MOVEMENT BY MODE



**590 K** | Daily truck miles traveled  
**1.17** | Planning Time Index  
**1,769** | Public Roadway Mileage



**1 Major Seaport** | Port of Fort Pierce



**44.07** | - Class I Mainline Miles  
| - Class II Mainline Miles (FEC)  
| - Class III Mainline Miles



**65 Miles** | Distance from closest major airport (Palm Beach International Airport)

# FLORIDA HIGHLIGHTS

**3rd most populous** US State

**\$1T Gross** Domestic Product

**4th Largest** US Economy and **17th Largest** Economy in World

Nation's **3rd largest** workforce

**1 in 5 U.S. exporters** are located in Florida

**\$153B** International Trade

**1.76M jobs supported** by Trade, Transportation and Utilities industry sector

**1.25M jobs supported** by Leisure and Hospitality industry sector

**131M** annual visitors

CAPITAL **TALLAHASSEE**

AREA  
(SQ. MILES) **53,624**

LARGEST  
CITY (SIZE) **JACKSONVILLE**

POPULATION  
(2019) **21,208,589**

ANNUAL POP  
GROWTH RATE  
(2010-2019) **1.4%**

EMPLOYMENT  
(2019) **8,884,065**

ANNUAL EMP  
GROWTH RATE  
(2010-2019) **2.8%**

*Bureau of Economic Business Research,  
Bureau of Labor Statistics*

## DOMESTIC IMPORTS

<b>1</b>	<b>GEORGIA</b>	\$44B
<b>2</b>	<b>CALIFORNIA</b>	\$29B
<b>3</b>	<b>TEXAS</b>	\$26B
<b>4</b>	<b>ALABAMA</b>	\$18B
<b>5</b>	<b>ILLINOIS</b>	\$18B

## DOMESTIC EXPORTS

<b>1</b>	<b>GEORGIA</b>	\$22B
<b>2</b>	<b>TEXAS</b>	\$19B
<b>3</b>	<b>CALIFORNIA</b>	\$15B
<b>4</b>	<b>NORTH CAROLINA</b>	\$12B
<b>5</b>	<b>NEW YORK</b>	\$10B

## INTERNATIONAL IMPORTS

<b>1</b>	<b>CHINA</b>	\$9.5B
<b>2</b>	<b>JAPAN</b>	\$6.5B
<b>3</b>	<b>BRAZIL</b>	\$6.4B
<b>4</b>	<b>MEXICO</b>	\$4.5B
<b>5</b>	<b>CHILE</b>	\$3.7B

## INTERNATIONAL EXPORTS

<b>1</b>	<b>BRAZIL</b>	\$13.4B
<b>2</b>	<b>COLOMBIA</b>	\$4.2B
<b>3</b>	<b>ARGENTINA</b>	\$3.6B
<b>4</b>	<b>DOMINICAN REPUBLIC</b>	\$3.1B
<b>5</b>	<b>CHILE</b>	\$3B



# TRANSPORTATION STATISTICS AND FREIGHT MOVEMENT BY MODE



**83%**  
TONNAGE

**71%**  
VALUE

**123,104** Public roadway mileage  
**12,130** State Highway System (SHS) mileage  
**30.7M** Daily truck miles traveled on SHS  
**98** Public truck parking facilities



**3.5%**  
TONNAGE

**2.9%**  
VALUE

**15** Deepwater seaports  
**4.1M** Twenty-foot equivalent units (TEUs)  
**16.8M** Annual cruise passengers



**6.7%**  
TONNAGE

**1.8%**  
VALUE

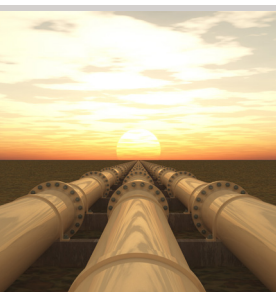
**2,936** Miles of roads  
**6.9M** Annual rail passenger traffic



**0.1%**  
TONNAGE

**5.4%**  
VALUE

**129** Public use airports  
**20** Commercial service airports  
**2** Active spaceports



**3.6%**  
TONNAGE

**1%**  
VALUE

**5,899** Miles of gas transmission and hazardous liquid pipelines



**3.1%**  
TONNAGE

**17.9%**  
VALUE

Includes shipments by multiple modes and by parcel delivery services, U.S. Postal Service, or couriers (capped at 150 pounds). This category is not limited to containerized or trailer-on-flatcar shipments.

# FLORIDA COMMODITY FLOWS (2018-2045)



IMPORTS



WITHIN FL



EXPORTS

	2018	2045	2018	2045	2018	2045
TONNAGE	142M	190M	656M	761M	57M	103M
VALUE	\$321B	\$690B	\$402B	\$844B	\$180B	\$606B

Freight Analysis Framework (FAF) 4.5.1.



**Rickey Fitzgerald**  
**Manager, Freight & Multimodal Operations**  
 Florida Department of Transportation  
 605 Suwannee Street, Tallahassee, FL 32399  
 Rickey.Fitzgerald@dot.state.fl.us  
 850.414.4702