

FREIGHT AND LOGISTICS OVERVIEW

FEBRUARY 2021

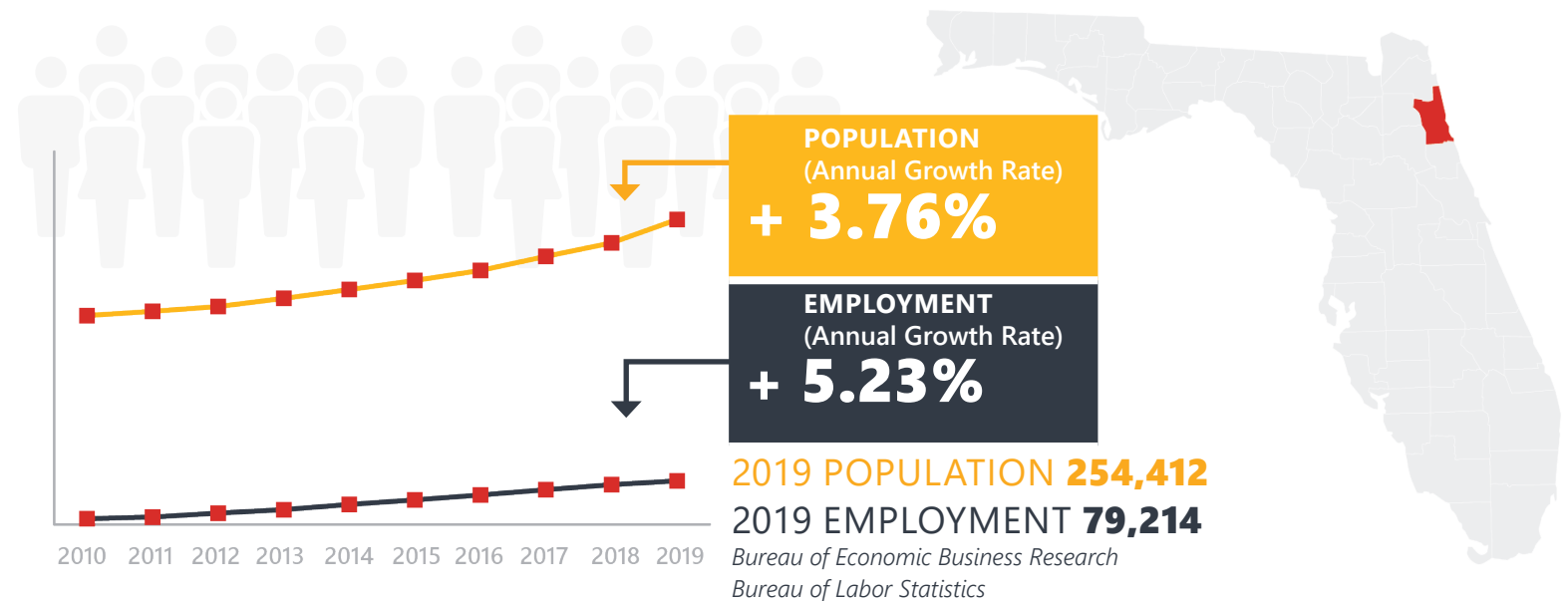
ST. JOHNS COUNTY



Mission: The department will provide a safe transportation system that ensures the mobility of people and goods, enhances economic prosperity, and preserves the quality of our environment and communities.

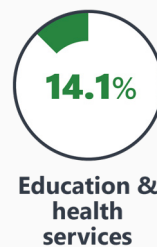
ST. JOHNS COUNTY HIGHLIGHTS

"FLORIDA'S HISTORIC COAST"		AREA (SQ . MILES)	822
COUNTY SEAT	ST. AUGUSTINE	LARGEST CITY (SIZE)	ST. AUGUSTINE



LARGEST INDUSTRY SECTORS BY EMPLOYMENT (2019)

Office of Economic and Demographic Research



FASTEST GROWING INDUSTRIES (2010-2019)

TRADE, TRANSPORTATION, AND UTILITIES	JOBS ADDED	5,222
LEISURE AND HOSPITALITY		4,781
PROFESSIONAL AND BUSINESS SERVICES		3,641
EDUCATION AND HEALTH SERVICES		2,790
CONSTRUCTION		2,427

Bureau of Labor Statistics

DID YOU KNOW?

The city of St. Augustine holds the title of the "Nation's Oldest City" because it is the oldest continuously occupied European-founded city in the United States.

St. Johns County is the 8th fastest-growing county in the United States.

St. Augustine is home to the narrowest street in the United States. Treasury Street is just 7 feet wide and connects the waterfront Bay Street to the Royal Spanish Treasury.

COMMODITY FLOW HIGHLIGHTS



IMPORTS

WITHIN COUNTY

EXPORTS

	2018	2045	2018	2045	2018	2045
Tonnage:	2.95 M	6.48 M	56.48 K	146.71 K	1.09 M	2.01 M
Value:	\$ 2.78 B	\$ 5.91 B	\$ 28.32 M	\$ 59.77 M	\$ 0.86 B	\$ 1.62 B



TOP COMMODITY *by Tonnage, 2018*

Nonmetallic Minerals	614,996
Petroleum or Coal Products	581,005
Warehouse, Distribution Center and Drayage Movements	542,561
Clay, Concrete, Glass, Stone	515,880
Food or Kindred Products	320,461



Clay, Concrete, Glass, Stone	324,135
Waste or Scrap Materials	312,585
Farm Products	226,395
Food or Kindred Products	80,121
Lumber or Wood Products	36,192



TOP COMMODITY *by Value, 2018*

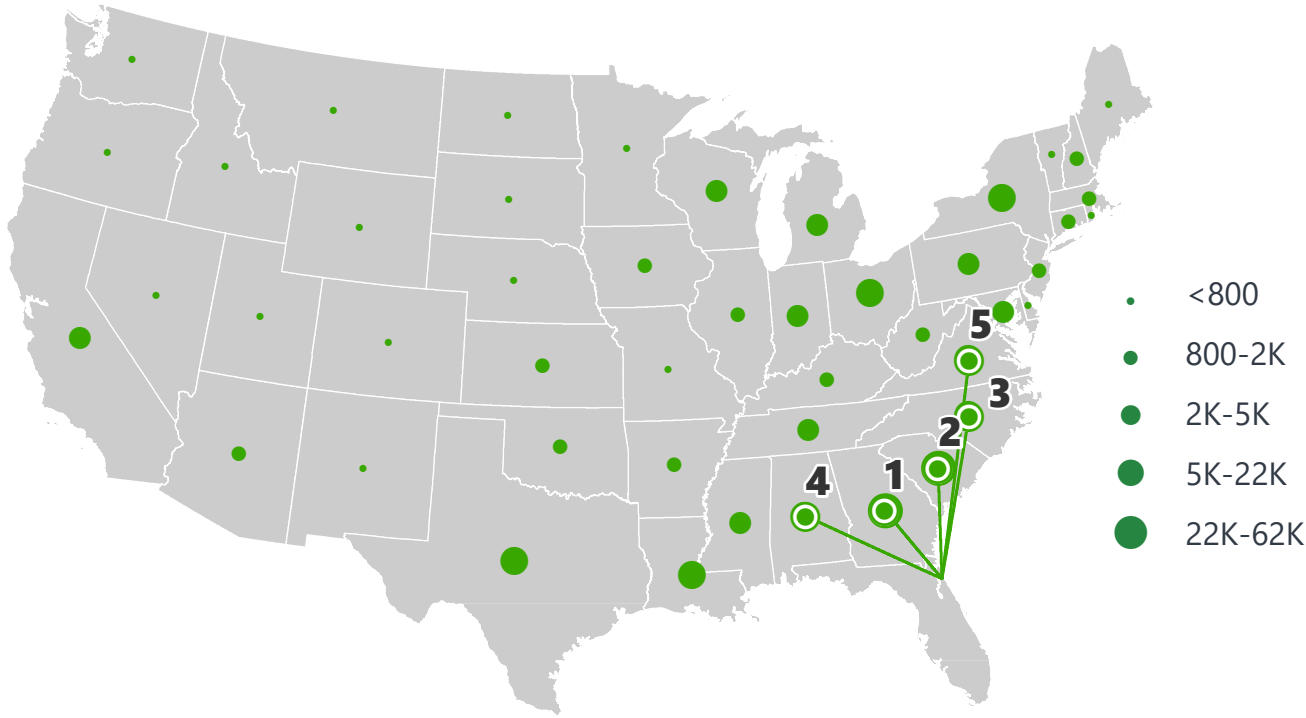
Warehouse, Distribution Center and Drayage Movements	\$ 712,805,930
Transportation Equipment	\$ 401,346,725
Food or Kindred Products	\$ 392,286,812
Petroleum or Coal Products	\$ 321,287,197
Chemicals or Allied Products	\$ 100,043,681



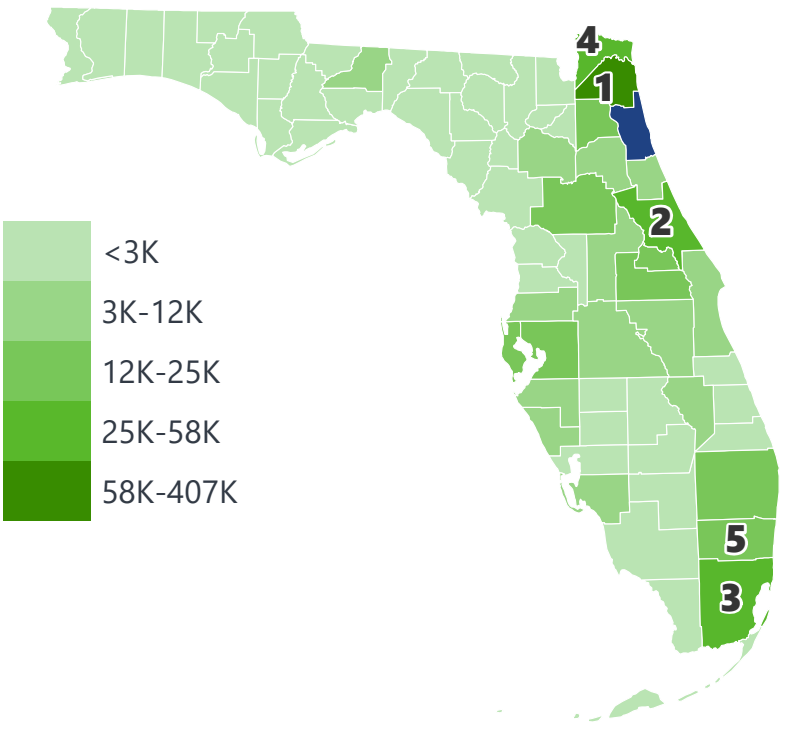
Farm Products	\$ 174,964,230
Food or Kindred Products	\$ 129,299,871
Primary Metal Products	\$ 96,633,982
Fabricated Metal Products	\$ 84,440,458
Waste or Scrap Materials	\$ 76,240,083

ST. JOHNS COUNTY EXPORTS AND IMPORTS

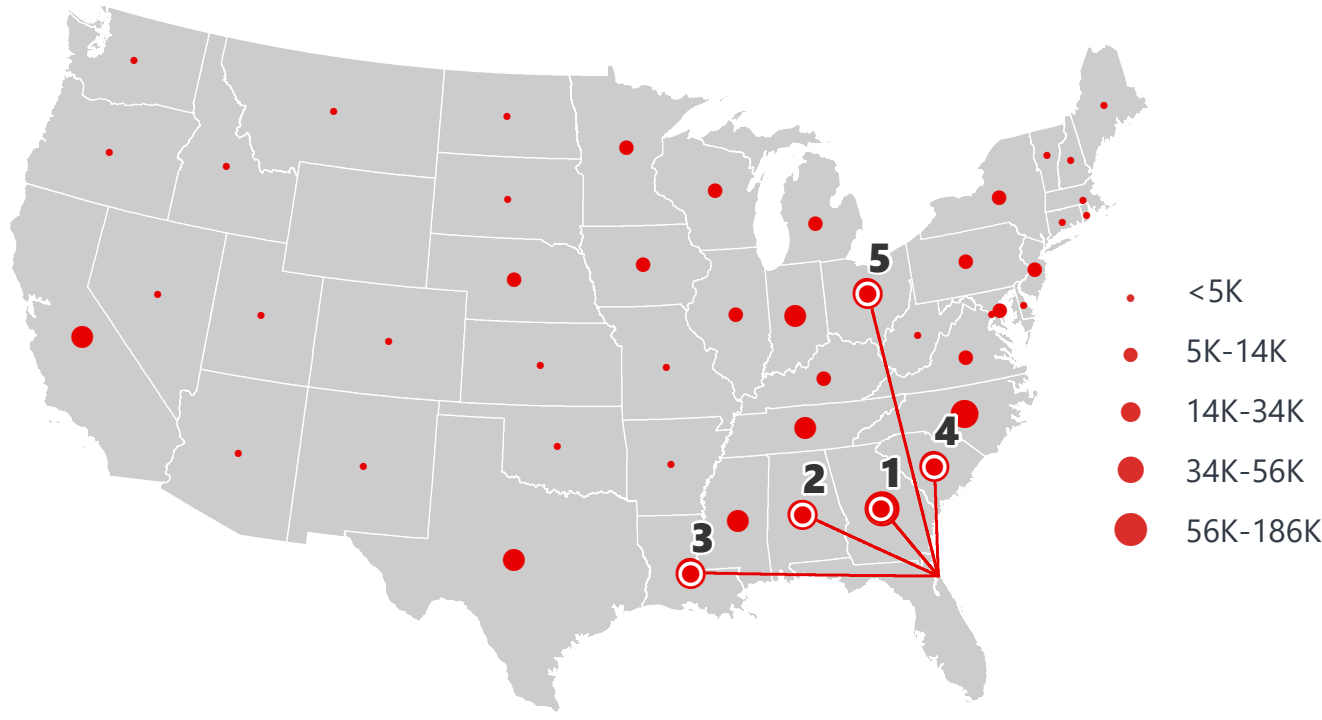
DOMESTIC EXPORTS (TONS)



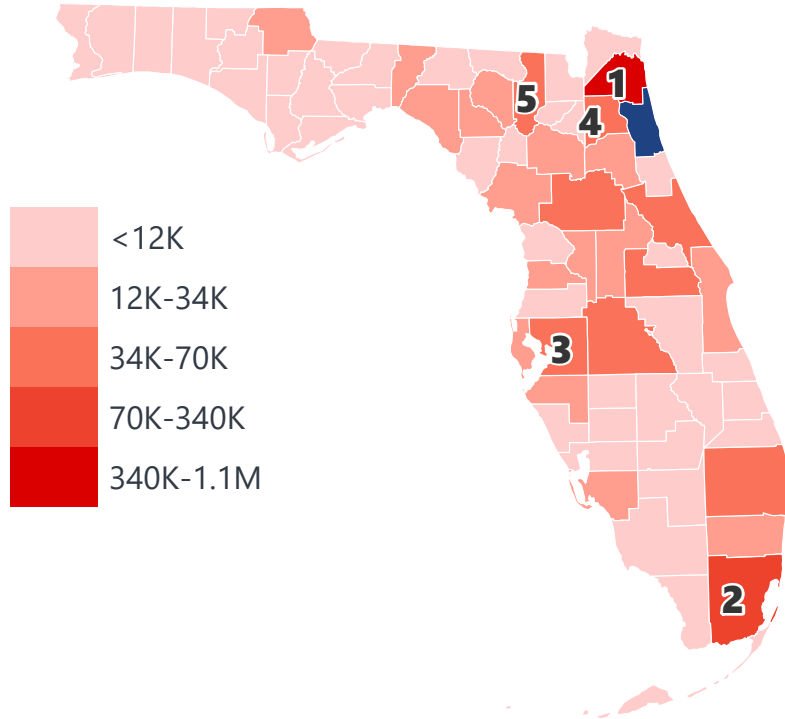
INTRASTATE EXPORTS (TONS)



DOMESTIC IMPORTS (TONS)



INTRASTATE IMPORTS (TONS)



DOMESTIC EXPORTS (TONNAGE)

1	Georgia	61,732
2	South Carolina	35,948
3	North Carolina	22,318
4	Alabama	15,969
5	Virginia	13,749

INTRASTATE EXPORTS (TONNAGE)

1	Duval	406,263
2	Volusia	58,395
3	Miami-Dade	41,650
4	Nassau	39,548
5	Broward	25,703

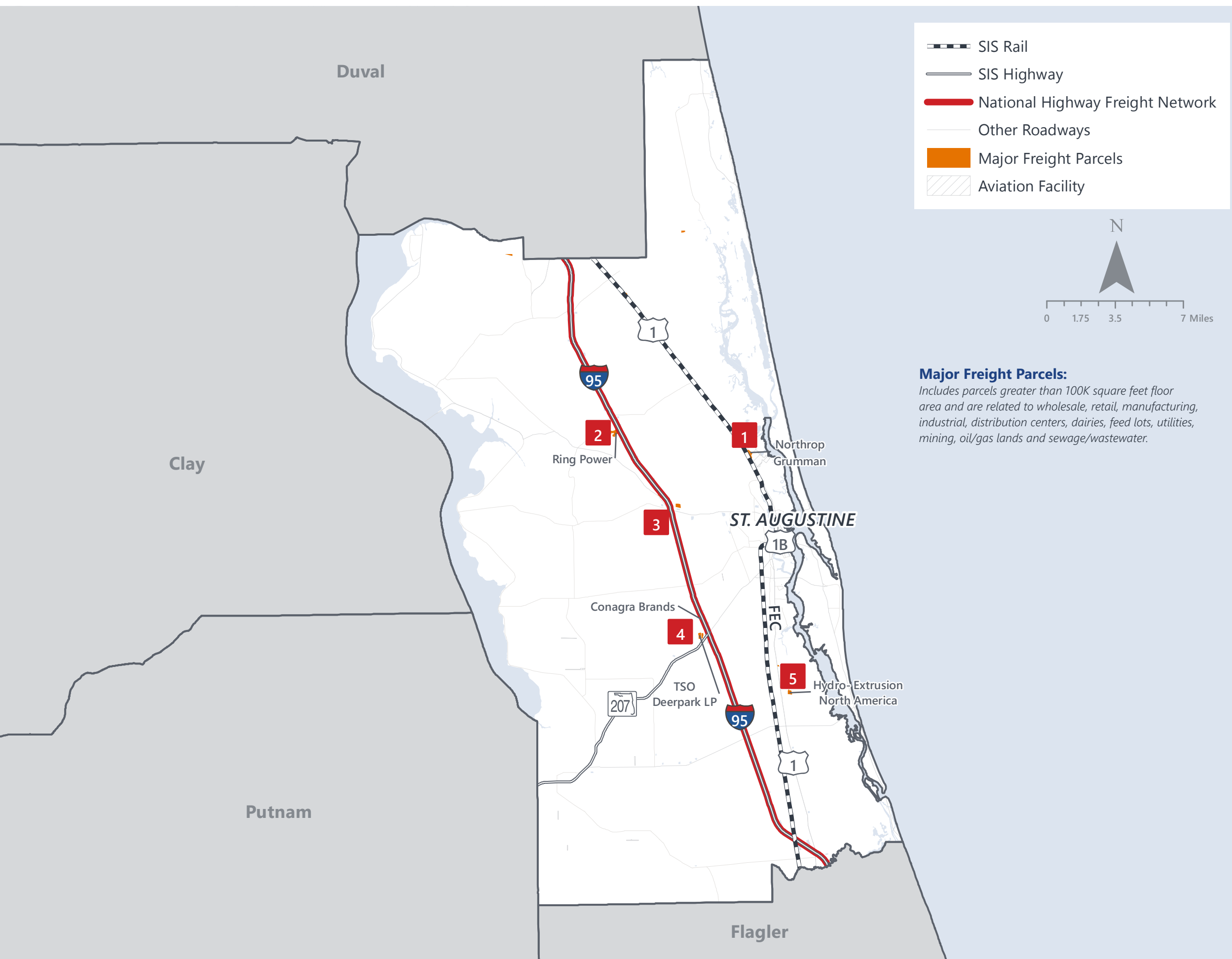
DOMESTIC IMPORTS (TONNAGE)

1	Georgia	185,767
2	Alabama	56,283
3	Louisiana	54,585
4	South Carolina	50,876
5	Ohio	45,703

INTRASTATE IMPORTS (TONNAGE)

1	Duval	1,019,890
2	Miami-Dade	340,762
3	Hillsborough	69,501
4	Clay	51,509
5	Columbia	51,126

ST. JOHNS COUNTY FREIGHT INFRASTRUCTURE



Major Freight Parcels:
Includes parcels greater than 100K square feet floor area and are related to wholesale, retail, manufacturing, industrial, distribution centers, dairies, feed lots, utilities, mining, oil/gas lands and sewage/wastewater.

LARGEST FREIGHT EMPLOYERS

1	Northrop Grumman	1K-2K
2	Ring Power	600-700
3	Carlisle	600-700
4	Kehe Distributors	300-400
5	Hydro Extrusion	300-400

MAJOR FREIGHT LAND USES

26.9 M SQ.FT Floor Area

43.22%	Warehousing and distribution centers
25.35%	Heavy industrial
16.37%	Airports, bus terminals and marine terminals
6.72%	Light manufacturing
2.67%	Lumber yards, sawmills, planing mills

419.3 M SQ.FT LAND AREA

62.52%	Sewage disposal and waste land
14.30%	Utilities
6.95%	Light manufacturing
5.22%	Warehousing and distribution centers
2.87%	Open storage

Florida Department of Economic Opportunity, 2018
Florida Department of Revenue, 2019

MAJOR COUNTY COMMODITIES



IMPORTS



TOP COMMODITY by Tonnage, 2018 (relative to Florida)

FL Rank	Commodity	% Florida Share
8	Tobacco Products	3.16%
14	Leather or Leather Products	1.74%
16	Misc. Manufacturing Products	1.64%
14	Marine Products	1.63%
15	Furniture or Fixtures	1.57%

EXPORTS



FL Rank	Commodity	% Florida Share
18	Farm Products	1.63%
20	Fabricated Metal Products	1.56%
8	Ordnance or Accessories	1.45%
8	Primary Metal Products	1.35%
12	Printed Matter	1.30%

TOP COMMODITY by Value, 2018 (relative to Florida)

FL Rank	Commodity	% Florida Share
8	Tobacco Products	3.38%
8	Leather or Leather Products	2.20%
15	Furniture or Fixtures	1.29%
19	Marine Products	1.25%
21	Clay, Concrete, Glass, Stone	1.17%

FL Rank	Commodity	% Florida Share
8	Primary Metal Products	2.33%
8	Ordnance or Accessories	2.00%
14	Farm Products	1.96%
10	Printed Matter	1.90%
18	Fabricated Metal Products	1.54%



TRANSPORTATION STATISTICS AND FREIGHT MOVEMENT BY MODE



323 K | Daily Truck Miles Traveled
1.20 | Planning Time Index
1,286 | Public Roadway Mileage



35 Miles | Distance from closest major seaport (JAXPORT)



- | Class I Mainline Miles
46.28 | Class II Mainline Miles (FEC)
- | Class III Mainline Miles



45 Miles | Distance from closest major airport (Jacksonville International Airport)

FLORIDA HIGHLIGHTS

3rd most populous US State

\$1T Gross Domestic Product

4th Largest US Economy and **17th Largest** Economy in World

Nation's **3rd largest** workforce

1 in 5 U.S. exporters are located in Florida

\$153B International Trade

1.76M jobs supported by Trade, Transportation and Utilities industry sector

1.25M jobs supported by Leisure and Hospitality industry sector

131M annual visitors

CAPITAL **TALLAHASSEE**

AREA (SQ. MILES) **53,624**

LARGEST CITY (SIZE) **JACKSONVILLE**

POPULATION (2019) **21,208,589**

ANNUAL POP GROWTH RATE (2010-2019) **1.4%**

EMPLOYMENT (2019) **8,884,065**

ANNUAL EMP GROWTH RATE (2010-2019) **2.8%**

*Bureau of Economic Business Research,
Bureau of Labor Statistics*

DOMESTIC IMPORTS

1	GEORGIA	\$44B
2	CALIFORNIA	\$29B
3	TEXAS	\$26B
4	ALABAMA	\$18B
5	ILLINOIS	\$18B

DOMESTIC EXPORTS

1	GEORGIA	\$22B
2	TEXAS	\$19B
3	CALIFORNIA	\$15B
4	NORTH CAROLINA	\$12B
5	NEW YORK	\$10B

INTERNATIONAL IMPORTS

1	CHINA	\$9.5B
2	JAPAN	\$6.5B
3	BRAZIL	\$6.4B
4	MEXICO	\$4.5B
5	CHILE	\$3.7B

INTERNATIONAL EXPORTS

1	BRAZIL	\$13.4B
2	COLOMBIA	\$4.2B
3	ARGENTINA	\$3.6B
4	DOMINICAN REPUBLIC	\$3.1B
5	CHILE	\$3B

TRANSPORTATION STATISTICS AND FREIGHT MOVEMENT BY MODE



83%
TONNAGE

71%
VALUE

123,104 Public roadway mileage
12,130 State Highway System (SHS) mileage
30.7M Daily truck miles traveled on SHS
98 Public truck parking facilities



3.5%
TONNAGE

2.9%
VALUE

15 Deepwater seaports
4.1M Twenty-foot equivalent units (TEUs)
16.8M Annual cruise passengers



6.7%
TONNAGE

1.8%
VALUE

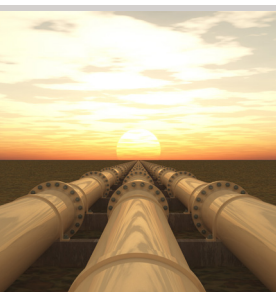
2,936 Miles of roads
6.9M Annual rail passenger traffic



0.1%
TONNAGE

5.4%
VALUE

129 Public use airports
20 Commercial service airports
2 Active spaceports



3.6%
TONNAGE

1%
VALUE

5,899 Miles of gas transmission and hazardous liquid pipelines



3.1%
TONNAGE

17.9%
VALUE

Includes shipments by multiple modes and by parcel delivery services, U.S. Postal Service, or couriers (capped at 150 pounds). This category is not limited to containerized or trailer-on-flatcar shipments.

FLORIDA COMMODITY FLOWS (2018-2045)



IMPORTS



WITHIN FL



EXPORTS

	2018	2045	2018	2045	2018	2045
TONNAGE	142M	190M	656M	761M	57M	103M
VALUE	\$321B	\$690B	\$402B	\$844B	\$180B	\$606B

Freight Analysis Framework (FAF) 4.5.1.



Rickey Fitzgerald
Manager, Freight & Multimodal Operations
 Florida Department of Transportation
 605 Suwannee Street, Tallahassee, FL 32399
 Rickey.Fitzgerald@dot.state.fl.us
 850.414.4702