

FREIGHT AND LOGISTICS OVERVIEW

FEBRUARY 2021

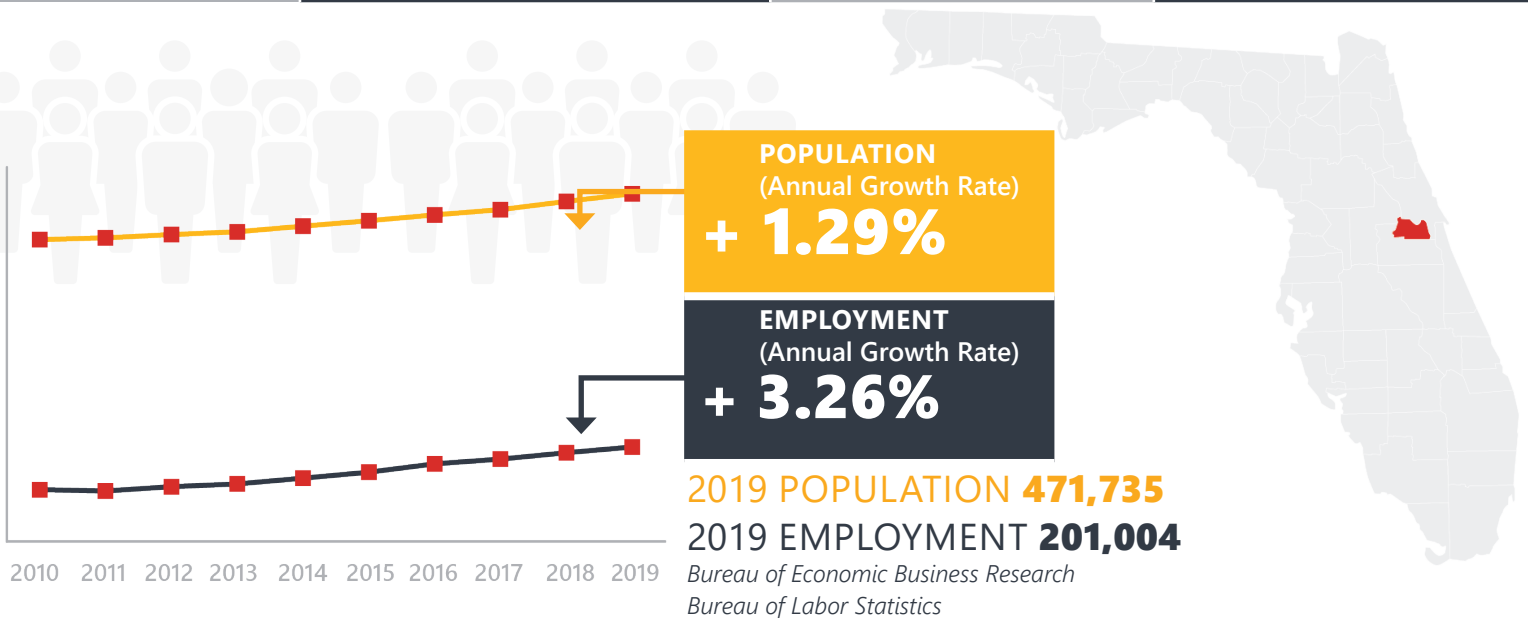
SEMINOLE COUNTY



Mission: The department will provide a safe transportation system that ensures the mobility of people and goods, enhances economic prosperity, and preserves the quality of our environment and communities.

SEMINOLE COUNTY HIGHLIGHTS

"FLORIDA'S NATURAL CHOICE"		AREA (SQ . MILES)	345
COUNTY SEAT	SANFORD	LARGEST CITY (SIZE)	SANFORD

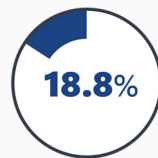


LARGEST INDUSTRY SECTORS BY EMPLOYMENT (2019)

Office of Economic and Demographic Research



Trade, transportation & utilities



Professional & business services



Education & health services



Construction



Leisure and hospitality

FASTEST GROWING INDUSTRIES (2010-2019)

PROFESSIONAL AND BUSINESS SERVICES	JOBS ADDED	10,313
CONSTRUCTION		9,499
EDUCATION AND HEALTH SERVICES		7,389
TRADE, TRANSPORTATION, AND UTILITIES		5,498
FINANCIAL ACTIVITIES		5,177

Bureau of Labor Statistics

DID YOU KNOW?

Foreign Trade Zone (FTZ) #250 located in Seminole County is the largest FTZ in the state, with geographic boundaries encompassing the Orlando Sanford airport as well as the Sanford Central Park and various other industrial parks.

Orlando's first commuter rail transit system SunRail, is a \$615 million investment that stretches 31 miles through Seminole County into Orange County near the Orlando International Airport (MCO).

From enjoying the Great Florida Birding Trail, to canoeing wild rivers, to spotting gators on an airboat tour, Seminole County puts nature nearer.

COMMODITY FLOW HIGHLIGHTS



IMPORTS

WITHIN COUNTY

EXPORTS

2018

2045

2018

2045

2018

2045

Tonnage:	7.47 M	8.3 M	0.19 M	0.14 M	1.58 M	1.87 M
Value:	\$ 5.64 B	\$ 7.6 B	\$ 0.13 B	\$ 0.14 B	\$ 1.51 B	\$ 2.37 B



TOP COMMODITY *by Tonnage, 2018*



Nonmetallic Minerals	1,807,096
Clay, Concrete, Glass, Stone	1,624,053
Petroleum or Coal Products	1,106,643
Warehouse, Distribution Center and Drayage Movements	879,556
Waste or Scrap Materials	613,229

Waste or Scrap Materials	630,816
Clay, Concrete, Glass, Stone	525,814
Food or Kindred Products	114,902
Lumber or Wood Products	71,373
Fabricated Metal Products	40,029



TOP COMMODITY *by Value, 2018*

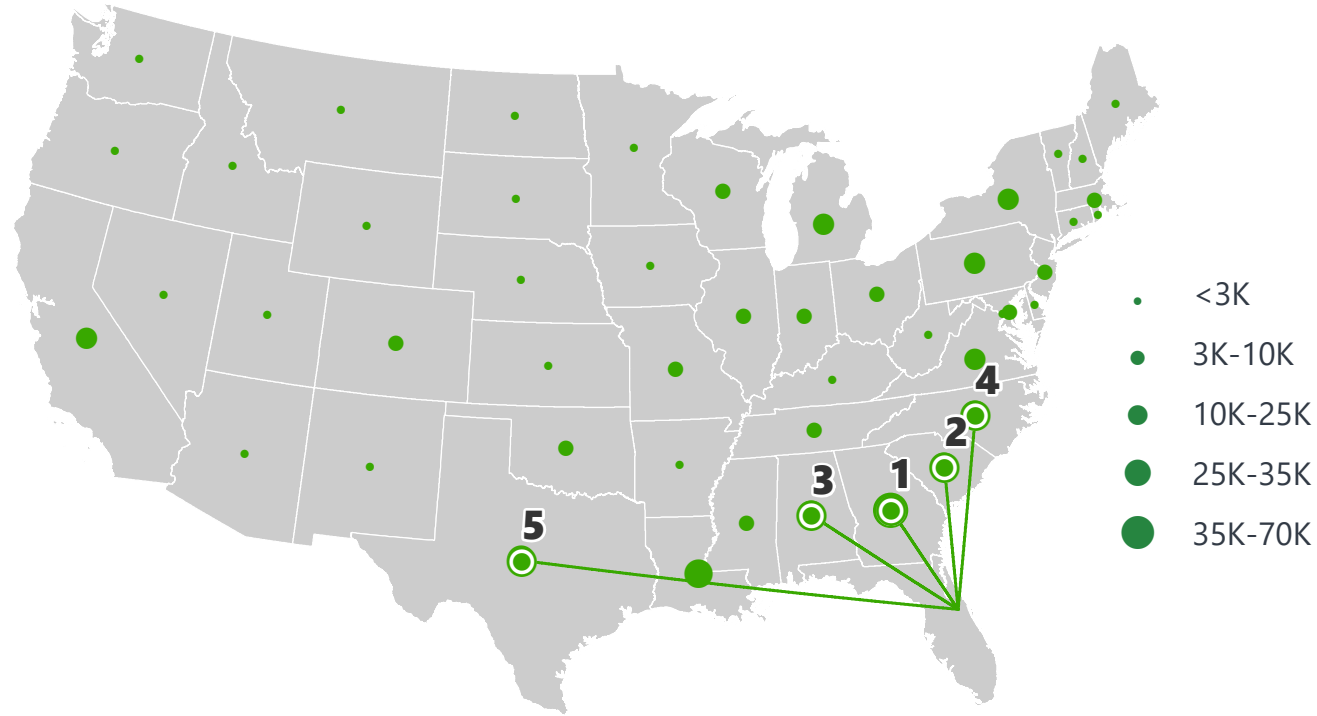


Warehouse, Distribution Center and Drayage Movements	\$ 1,222,391,354
Transportation Equipment	\$ 757,005,054
Food or Kindred Products	\$ 622,597,604
Petroleum or Coal Products	\$ 511,749,762
Chemicals or Allied Products	\$ 463,526,987

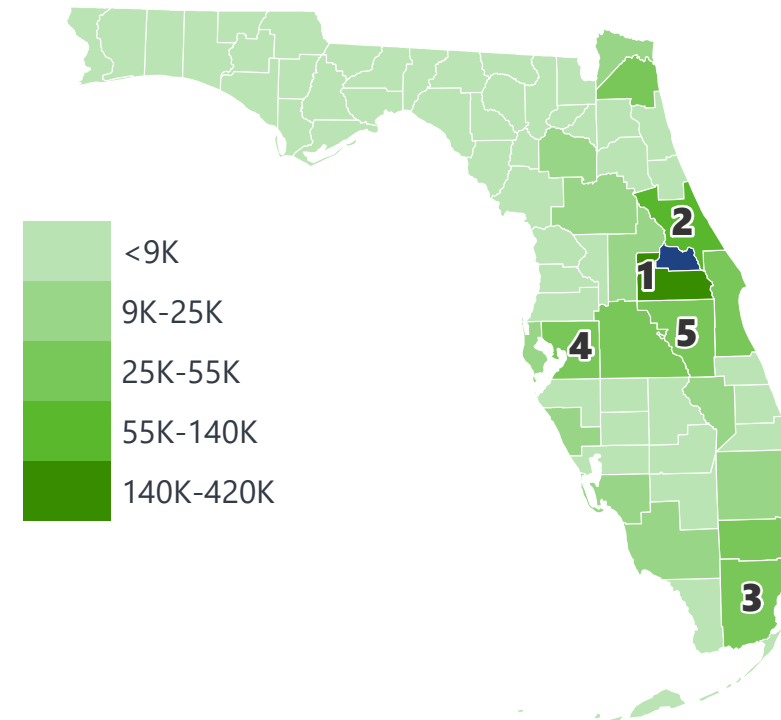
Chemicals or Allied Products	\$ 202,992,681
Food or Kindred Products	\$ 185,304,385
Waste or Scrap Materials	\$ 167,216,999
Instruments, Photo and Optical Equipment	\$ 164,557,976
Machinery	\$ 131,591,809

SEMINOLE COUNTY EXPORTS AND IMPORTS

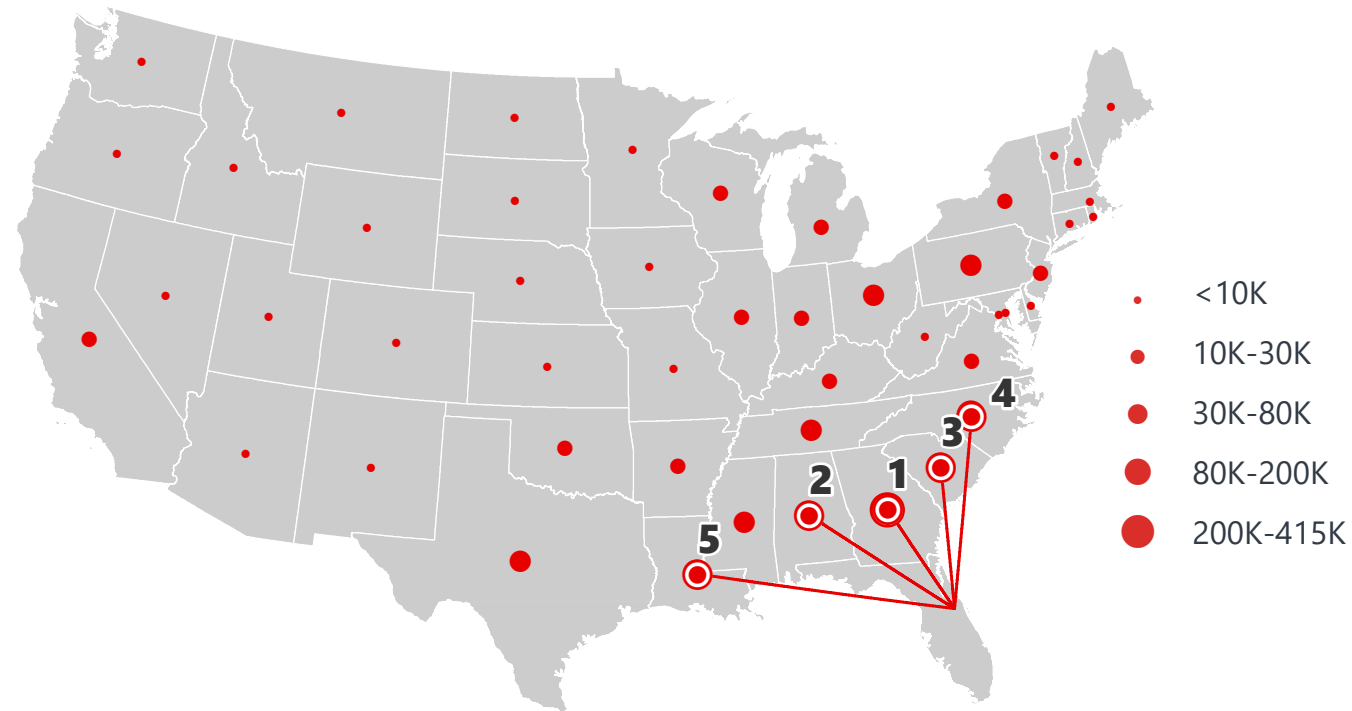
DOMESTIC EXPORTS (TONS)



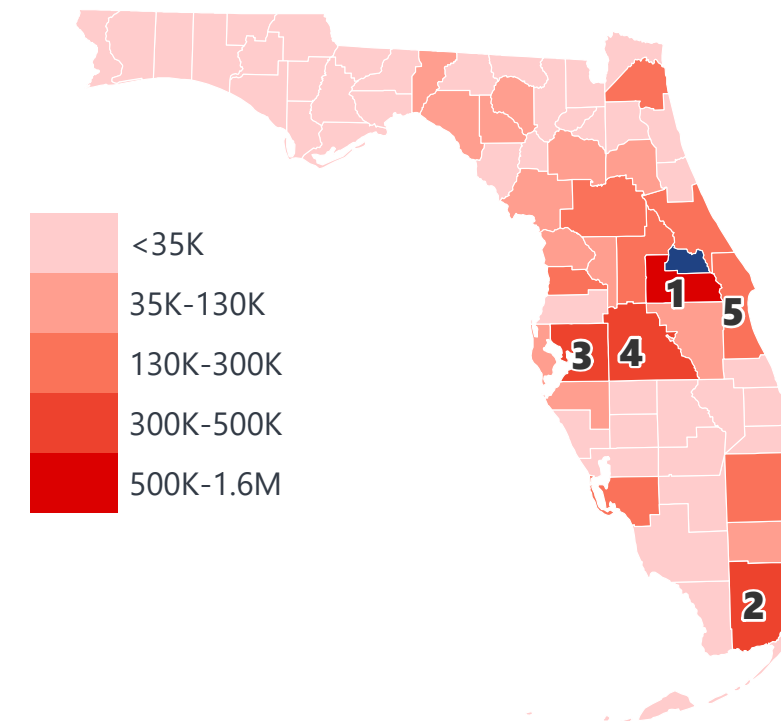
INTRASTATE EXPORTS (TONS)



DOMESTIC IMPORTS (TONS)



INTRASTATE IMPORTS (TONS)



DOMESTIC EXPORTS (TONNAGE)

1	Georgia	68,260
2	South Carolina	37,108
3	Alabama	34,780
4	North Carolina	34,549
5	Texas	32,090

INTRASTATE EXPORTS (TONNAGE)

1	Orange	419,781
2	Volusia	139,709
3	Miami-Dade	56,829
4	Hillsborough	52,077
5	Osceola	48,186

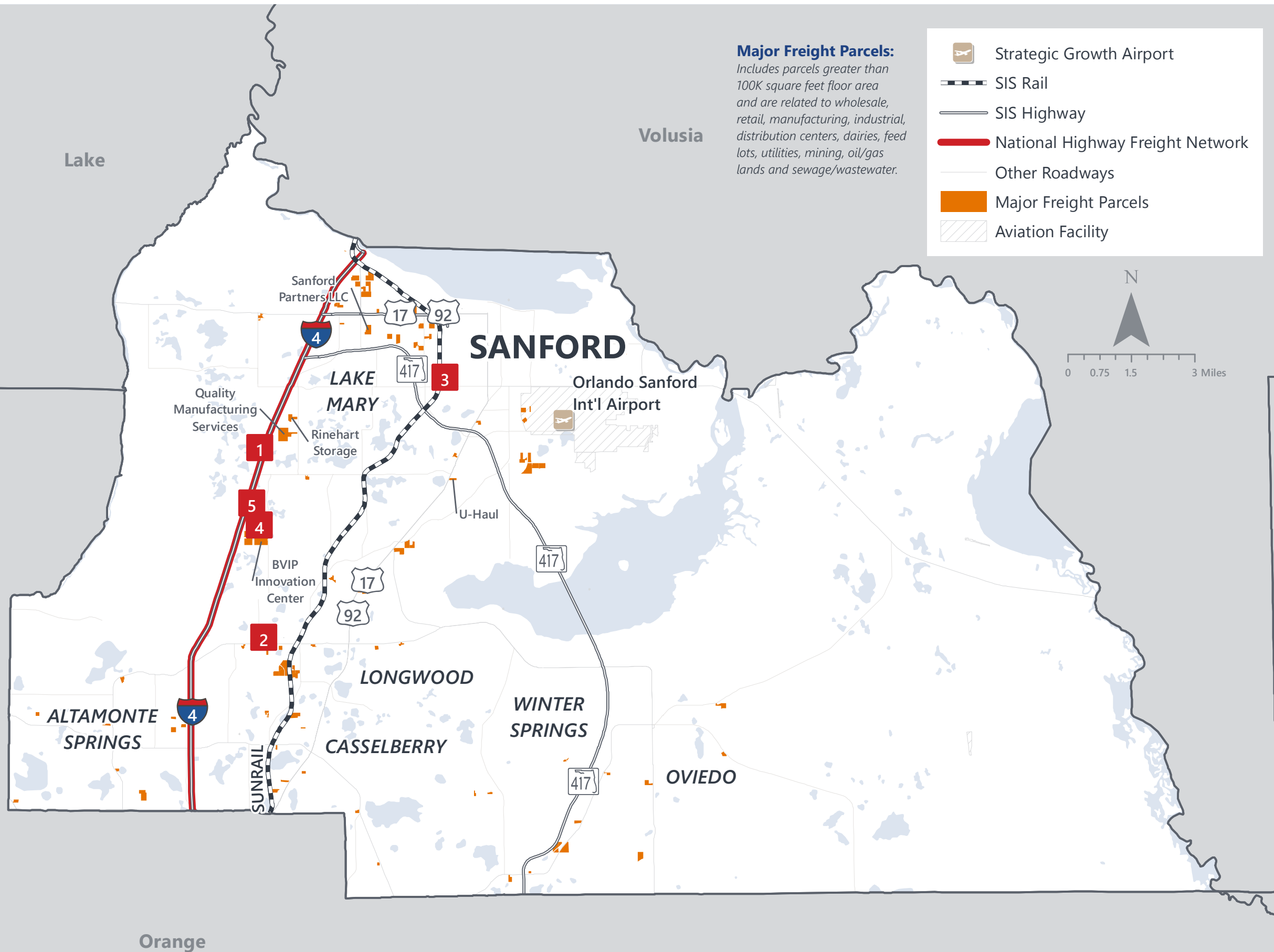
DOMESTIC IMPORTS (TONNAGE)

1	Georgia	411,068
2	Alabama	200,714
3	South Carolina	107,697
4	North Carolina	101,518
5	Louisiana	100,370

INTRASTATE IMPORTS (TONNAGE)

1	Orange	1,559,444
2	Miami-Dade	489,397
3	Hillsborough	432,495
4	Polk	339,462
5	Brevard	308,112

SEMINOLE COUNTY FREIGHT INFRASTRUCTURE



LARGEST FREIGHT EMPLOYERS

1	Veritas Tech	800-900
2	UPS	700-800
3	Carmines Bakery	400-500
4	Faro Tech	300-400
5	Scholastic Book	200-300

MAJOR FREIGHT LAND USES

42.8 M SQ.FT Floor Area

53.92%	Light manufacturing
41.71%	Warehousing and distribution centers
1.10%	Utilities
1.09%	Other food processing
0.85%	Open storage

246.0 M SQ.FT LAND AREA

41.52%	Sewage disposal and waste land
25.44%	Light manufacturing
18.00%	Warehousing and distribution centers
9.34%	Utilities
1.88%	Open storage

Florida Department of Economic Opportunity, 2018
Florida Department of Revenue, 2019

MAJOR COUNTY COMMODITIES



IMPORTS



TOP COMMODITY by Tonnage, 2018 (relative to Florida)

FL Rank	Commodity	% Florida Share
8	Clay, Concrete, Glass, Stone	3.90%
8	Waste or Scrap Materials	3.89%
12	Printed Matter	2.24%
12	Rubber or Misc. Plastics	2.09%
13	Warehouse, Distribution Center and Drayage Movements	2.08%

EXPORTS



FL Rank	Commodity	% Florida Share
5	Instruments, Photo and Optical Equipment	8.62%
8	Printed Matter	4.78%
13	Fabricated Metal Products	2.61%
13	Waste or Scrap Materials	2.37%
10	Electrical Equipment	2.08%

TOP COMMODITY by Value, 2018 (relative to Florida)

FL Rank	Commodity	% Florida Share
9	Waste or Scrap Materials	3.86%
9	Clay, Concrete, Glass, Stone	2.95%
11	Lumber or Wood Products	2.12%
12	Rubber or Misc. Plastics	1.98%
12	Printed Matter	1.95%

FL Rank	Commodity	% Florida Share
8	Printed Matter	3.89%
12	Waste or Scrap Materials	2.50%
15	Fabricated Metal Products	1.94%
12	Instruments, Photo and Optical Equipment	1.54%
14	Machinery	1.24%



TRANSPORTATION STATISTICS AND FREIGHT MOVEMENT BY MODE



95.16%
TONNAGE
97.36%
VALUE

489 K | Daily Truck Miles Traveled
1.88 | Planning Time Index
1,644 | Public Roadway Mileage



0.00%
TONNAGE
0.00%
VALUE

60 Miles | Distance from closest seaport
(Port Canaveral)



4.83%
TONNAGE
2.58%
VALUE

29.99 | Class I Mainline Miles (CFRC, CSX)
- Class II Mainline Miles
- Class III Mainline Miles



0.00%
TONNAGE
0.00%
VALUE

1 Major Airport | Sanford-Orlando International Airport

FLORIDA HIGHLIGHTS

3rd most populous US State
\$1T Gross Domestic Product
4th Largest US Economy and 17th Largest Economy in World
Nation's 3rd largest workforce
1 in 5 U.S. exporters are located in Florida
\$153B International Trade
1.76M jobs supported by Trade, Transportation and Utilities industry sector
1.25M jobs supported by Leisure and Hospitality industry sector
131M annual visitors

CAPITAL	TALLAHASSEE
AREA (SQ . MILES)	53,624
LARGEST CITY (SIZE)	JACKSONVILLE
POPULATION (2019)	21,208,589
ANNUAL POP GROWTH RATE (2010-2019)	1.4%
EMPLOYMENT (2019)	8,884,065
ANNUAL EMP GROWTH RATE (2010-2019)	2.8%

Bureau of Economic Business Research, Bureau of Labor Statistics

DOMESTIC IMPORTS

1	GEORGIA	\$44B
2	CALIFORNIA	\$29B
3	TEXAS	\$26B
4	ALABAMA	\$18B
5	ILLINOIS	\$18B

DOMESTIC EXPORTS

1	GEORGIA	\$22B
2	TEXAS	\$19B
3	CALIFORNIA	\$15B
4	NORTH CAROLINA	\$12B
5	NEW YORK	\$10B

INTERNATIONAL IMPORTS

1	CHINA	\$9.5B
2	JAPAN	\$6.5B
3	BRAZIL	\$6.4B
4	MEXICO	\$4.5B
5	CHILE	\$3.7B

INTERNATIONAL EXPORTS

1	BRAZIL	\$13.4B
2	COLOMBIA	\$4.2B
3	ARGENTINA	\$3.6B
4	DOMINICAN REPUBLIC	\$3.1B
5	CHILE	\$3B



TRANSPORTATION STATISTICS AND FREIGHT MOVEMENT BY MODE



83%
TONNAGE

71%
VALUE

- 123,104** Public roadway mileage
- 12,130** State Highway System (SHS) mileage
- 30.7M** Daily truck miles traveled on SHS
- 98** Public truck parking facilities



3.5%
TONNAGE

2.9%
VALUE

- 15** Deepwater seaports
- 4.1M** Twenty-foot equivalent units (TEUs)
- 16.8M** Annual cruise passengers



6.7%
TONNAGE

1.8%
VALUE

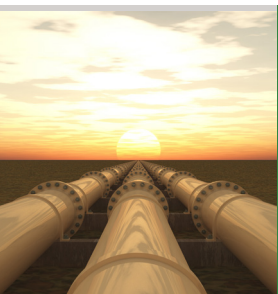
- 2,936** Miles of roads
- 6.9M** Annual rail passenger traffic



0.1%
TONNAGE

5.4%
VALUE

- 129** Public use airports
- 20** Commercial service airports
- 2** Active spaceports



3.6%
TONNAGE

1%
VALUE

- 5,899** Miles of gas transmission and hazardous liquid pipelines



3.1%
TONNAGE

17.9%
VALUE

Includes shipments by multiple modes and by parcel delivery services, U.S. Postal Service, or couriers (capped at 150 pounds). This category is not limited to containerized or trailer-on-flatcar shipments.

FLORIDA COMMODITY FLOWS (2018-2045)



IMPORTS



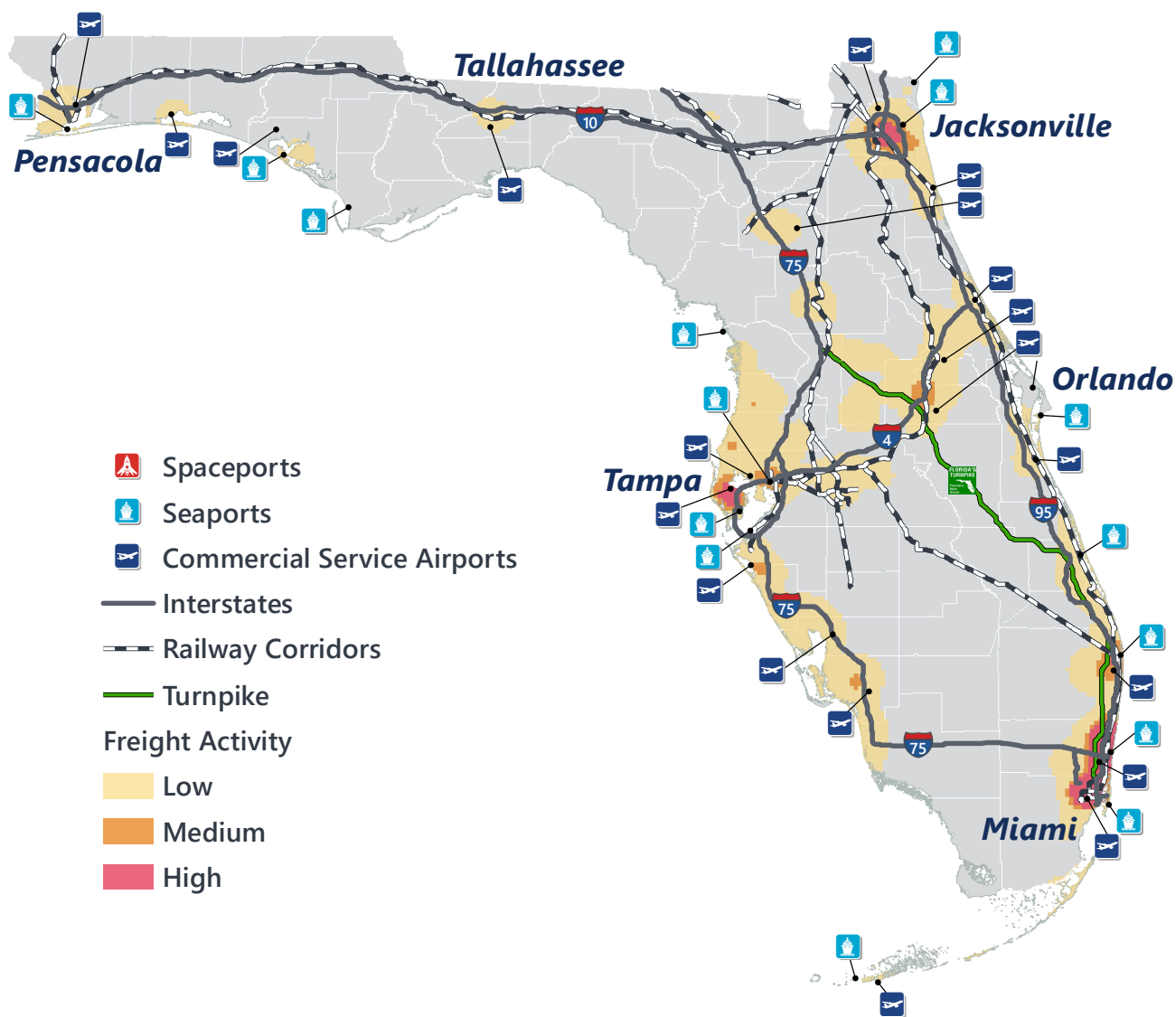
WITHIN FL



EXPORTS

	2018	2045	2018	2045	2018	2045
TONNAGE	142M	190M	656M	761M	57M	103M
VALUE	\$321B	\$690B	\$402B	\$844B	\$180B	\$606B

Freight Analysis Framework (FAF) 4.5.1.



Rickey Fitzgerald
 Manager, Freight & Multimodal Operations
 Florida Department of Transportation
 605 Suwannee Street, Tallahassee, FL 32399
 Rickey.Fitzgerald@dot.state.fl.us
 850.414.4702