

FREIGHT AND LOGISTICS OVERVIEW

FEBRUARY 2021

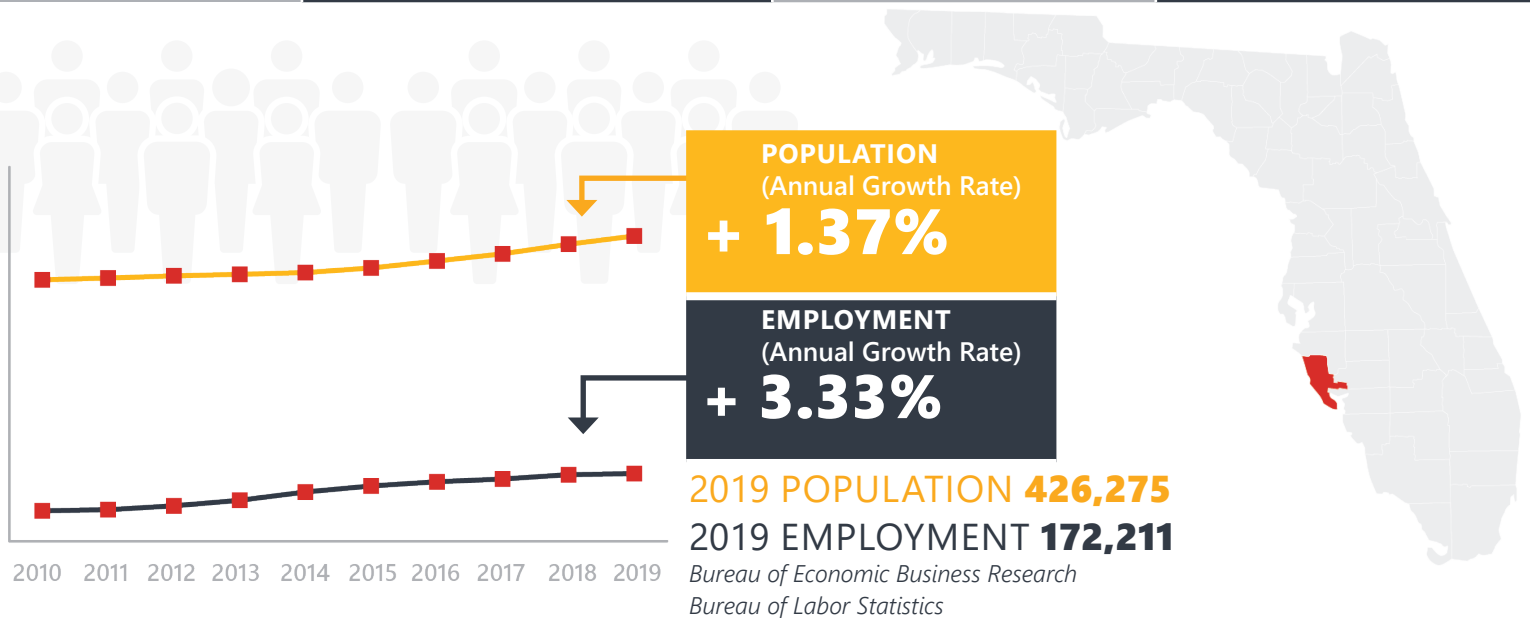
SARASOTA COUNTY



Mission: The department will provide a safe transportation system that ensures the mobility of people and goods, enhances economic prosperity, and preserves the quality of our environment and communities.

SARASOTA COUNTY HIGHLIGHTS

"BEACHES AND BEYOND"		AREA (SQ . MILES)	725
COUNTY SEAT	SARASOTA	LARGEST CITY (SIZE)	NORTH PORT

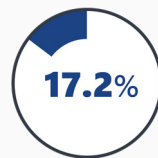


LARGEST INDUSTRY SECTORS BY EMPLOYMENT (2019)

Office of Economic and Demographic Research



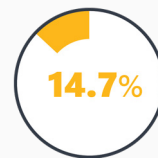
Education & health services



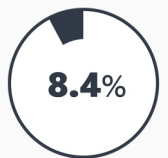
Trade, transportation & utilities



Professional & business services



Leisure & hospitality



Construction

FASTEST GROWING INDUSTRIES (2010-2019)

PROFESSIONAL AND BUSINESS SERVICES	JOBS ADDED	9,972
EDUCATION AND HEALTH SERVICES		7,298
LEISURE AND HOSPITALITY		5,934
CONSTRUCTION		5,899
TRADE, TRANSPORTATION, AND UTILITIES		5,483

Bureau of Labor Statistics

DID YOU KNOW?

Sarasota County is home to headquarters of Tervis Tumbler along with major other distribution centers.

Sarasota has a higher concentration of Zagat-rated restaurants than any other city in Florida.

Golf is a top activity in Sarasota. There are over 1,000 public, private and semi-private golf courses to choose from in the county.

COMMODITY FLOW HIGHLIGHTS



IMPORTS

WITHIN COUNTY

EXPORTS

	2018	2045	2018	2045	2018	2045
Tonnage:	7.98 M	9.17 M	0.42 M	0.42 M	2.58 M	3 M
Value:	\$ 6.6 B	\$ 9.24 B	\$ 0.25 B	\$ 0.29 B	\$ 2.43 B	\$ 2.55 B



TOP COMMODITY by Tonnage, 2018



Nonmetallic Minerals	2,925,018
Clay, Concrete, Glass, Stone	1,131,651
Petroleum or Coal Products	1,084,019
Warehouse, Distribution Center and Drayage Movements	929,372
Food or Kindred Products	589,360

Clay, Concrete, Glass, Stone	911,168
Waste or Scrap Materials	620,559
Warehouse, Distribution Center and Drayage Movements	589,647
Rubber or Misc. Plastics	129,594
Fabricated Metal Products	111,599



TOP COMMODITY by Value, 2018

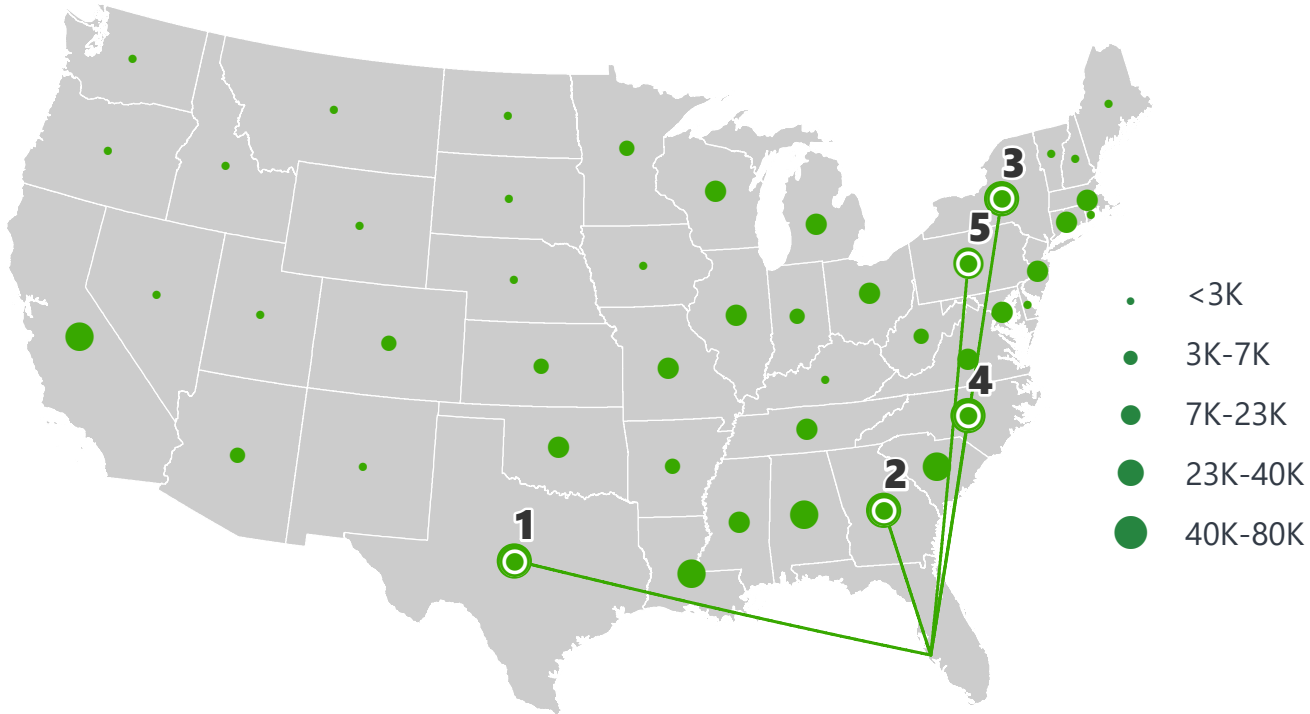


Warehouse, Distribution Center and Drayage Movements	\$ 1,245,509,797
Transportation Equipment	\$ 866,597,191
Food or Kindred Products	\$ 846,688,617
Petroleum or Coal Products	\$ 545,911,147
Chemicals or Allied Products	\$ 512,259,880

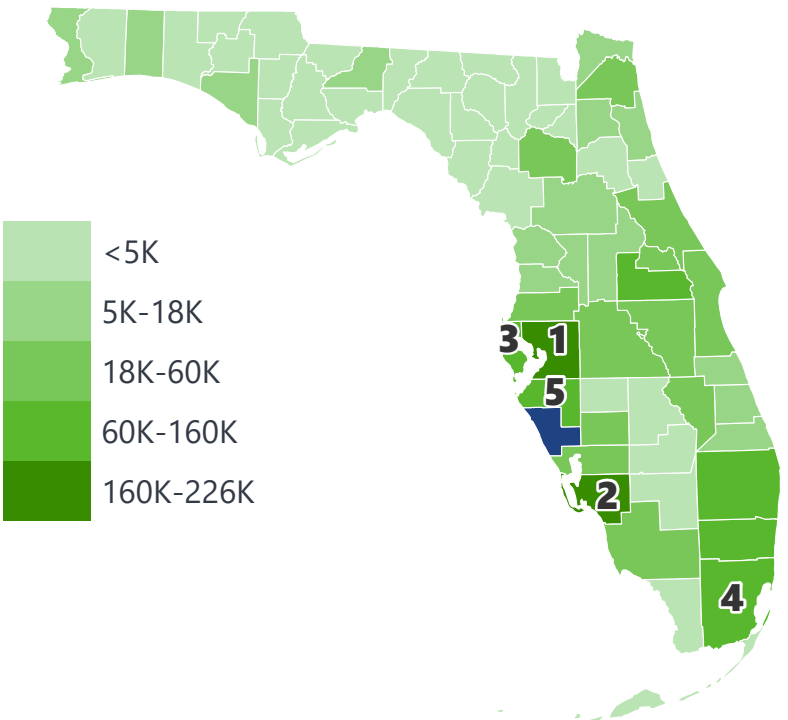
Warehouse, Distribution Center and Drayage Movements	\$ 722,923,600
Rubber or Misc. Plastics	\$ 481,145,865
Fabricated Metal Products	\$ 366,355,887
Clay, Concrete, Glass, Stone	\$ 178,915,145
Waste or Scrap Materials	\$ 160,276,287

SARASOTA COUNTY EXPORTS AND IMPORTS

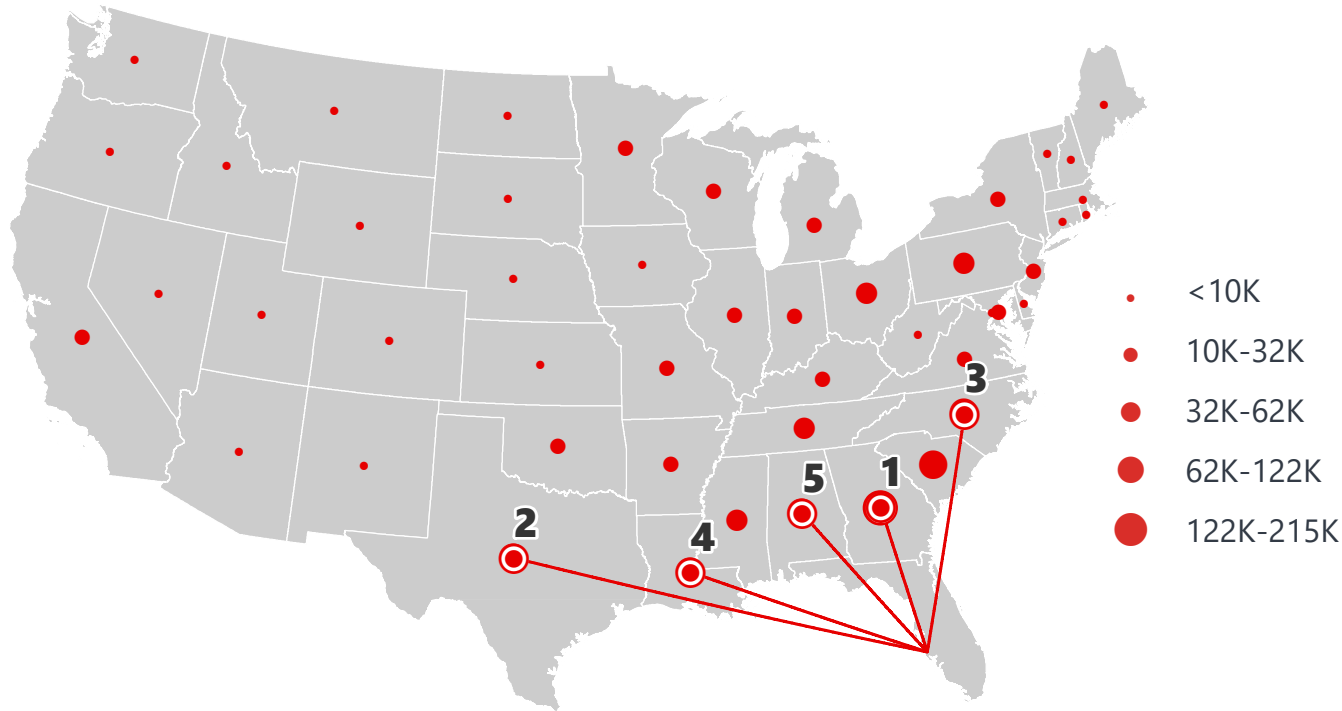
DOMESTIC EXPORTS (TONS)



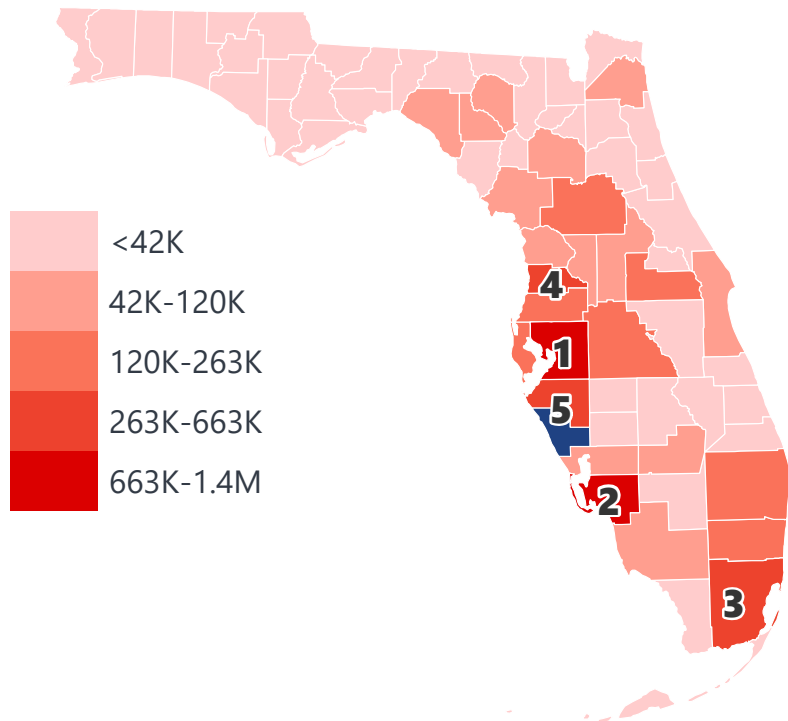
INTRASTATE EXPORTS (TONS)



DOMESTIC IMPORTS (TONS)



INTRASTATE IMPORTS (TONS)



DOMESTIC EXPORTS (TONNAGE)

1	Texas	79,685
2	Georgia	75,498
3	New York	65,430
4	North Carolina	62,385
5	Pennsylvania	40,454

INTRASTATE EXPORTS (TONNAGE)

1	Hillsborough	225,599
2	Lee	209,912
3	Pinellas	161,676
4	Miami-Dade	144,867
5	Manatee	121,230

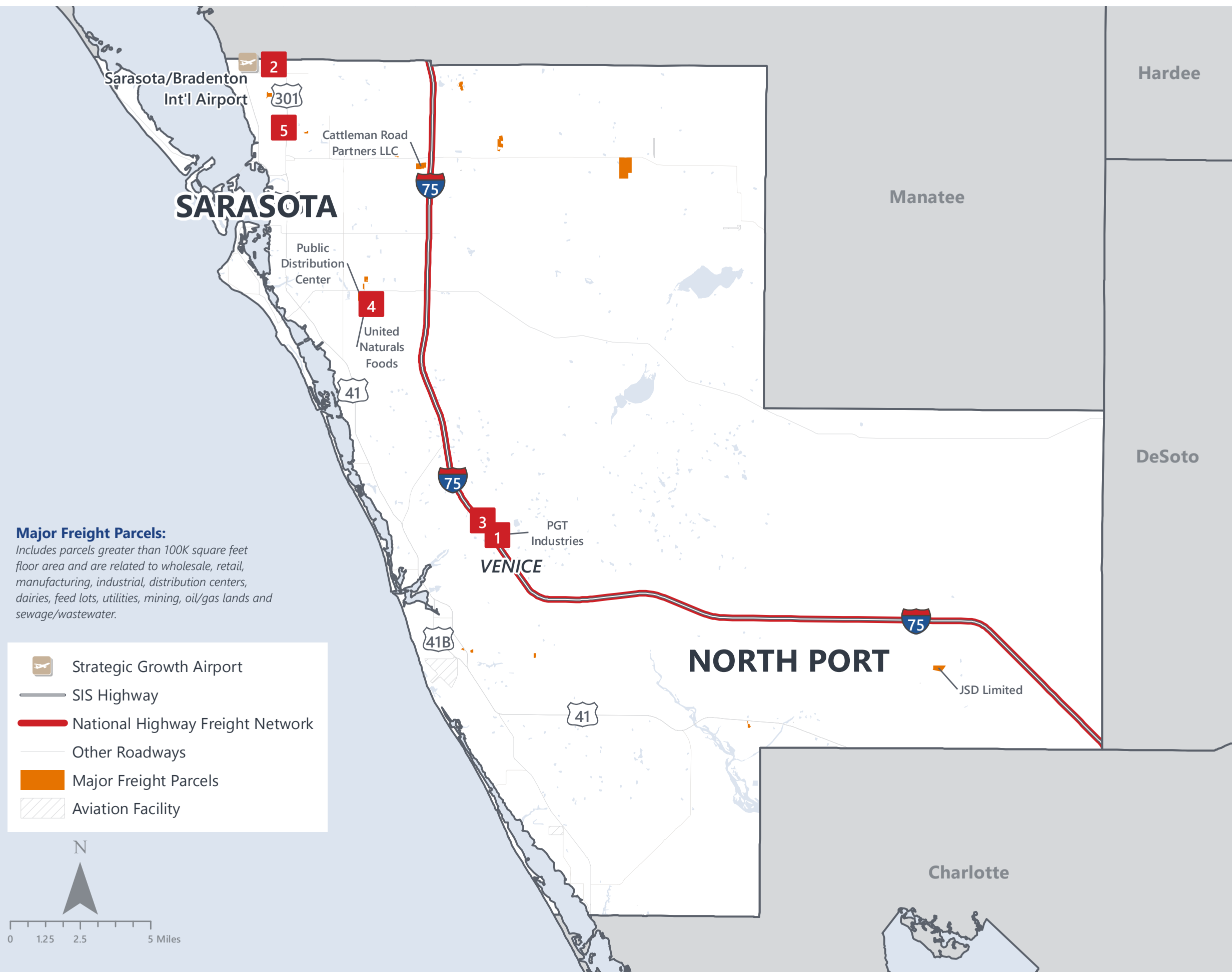
DOMESTIC IMPORTS (TONNAGE)

1	Georgia	214,893
2	Texas	122,477
3	North Carolina	106,406
4	Louisiana	88,767
5	Alabama	81,815

INTRASTATE IMPORTS (TONNAGE)

1	Hillsborough	1,388,827
2	Lee	1,139,824
3	Miami-Dade	662,437
4	Hernando	456,458
5	Manatee	386,430

SARASOTA COUNTY FREIGHT INFRASTRUCTURE



LARGEST FREIGHT EMPLOYERS

1	PGT Industries	1K-2K
2	Sun Hydraulics	700-800
3	Tervis Tumbler	400-500
4	United Natural Foods	400-500
5	UPS	400-500

MAJOR FREIGHT LAND USES

24.6 M SQ.FT Floor Area

67.03%	Warehousing and distribution centers
21.60%	Light manufacturing
3.63%	Airports, bus terminals and marine terminals
3.31%	Utilities
2.06%	Lumber yards, sawmills, planing mills

1.02 B SQ.FT LAND AREA

58.35%	Sewage disposal and waste land
18.61%	Warehousing and distribution centers
13.75%	Utilities
3.71%	Airports, bus terminals and marine terminals
3.08%	Light manufacturing

Florida Department of Economic Opportunity, 2018
Florida Department of Revenue, 2019

MAJOR COUNTY COMMODITIES



IMPORTS



TOP COMMODITY by Tonnage, 2018 (relative to Florida)

FL Rank	Commodity	% Florida Share
10	Primary Metal Products	3.68%
10	Fabricated Metal Products	2.97%
13	Clay, Concrete, Glass, Stone	2.72%
9	Misc. Manufacturing Products	2.63%
11	Printed Matter	2.51%

EXPORTS



FL Rank	Commodity	% Florida Share
1	Rubber or Misc. Plastics	12.37%
4	Fabricated Metal Products	7.27%
10	Instruments, Photo and Optical Equipment	2.67%
14	Waste or Scrap Materials	2.33%
12	Misc. Manufacturing Products	1.93%

TOP COMMODITY by Value, 2018 (relative to Florida)

FL Rank	Commodity	% Florida Share
10	Primary Metal Products	2.67%
10	Fabricated Metal Products	2.65%
11	Clay, Concrete, Glass, Stone	2.50%
11	Printed Matter	2.45%
10	Food or Kindred Products	2.23%

FL Rank	Commodity	% Florida Share
3	Rubber or Misc. Plastics	9.95%
6	Fabricated Metal Products	6.68%
13	Waste or Scrap Materials	2.40%
13	Clay, Concrete, Glass, Stone	2.35%
11	Printed Matter	1.66%



TRANSPORTATION STATISTICS AND FREIGHT MOVEMENT BY MODE



520 K | Daily Truck Miles Traveled
1.49 | Planning Time Index
2,453 | Public Roadway Mileage



39 Miles | Distance from closest seaport
(Port Manatee)



- | Class I Mainline Miles
- | Class II Mainline Miles
14.87 | Class III Mainline Miles (SGLR)



1 Major Airport | Sarasota-Bradenton International Airport

FLORIDA HIGHLIGHTS

3rd most populous US State

\$1T Gross Domestic Product

4th Largest US Economy and **17th Largest** Economy in World

Nation's **3rd largest** workforce

1 in 5 U.S. exporters are located in Florida

\$153B International Trade

1.76M jobs supported by Trade, Transportation and Utilities industry sector

1.25M jobs supported by Leisure and Hospitality industry sector

131M annual visitors

CAPITAL **TALLAHASSEE**

AREA (SQ. MILES) **53,624**

LARGEST CITY (SIZE) **JACKSONVILLE**

POPULATION (2019) **21,208,589**

ANNUAL POP GROWTH RATE (2010-2019) **1.4%**

EMPLOYMENT (2019) **8,884,065**

ANNUAL EMP GROWTH RATE (2010-2019) **2.8%**

*Bureau of Economic Business Research,
Bureau of Labor Statistics*

DOMESTIC IMPORTS

1	GEORGIA	\$44B
2	CALIFORNIA	\$29B
3	TEXAS	\$26B
4	ALABAMA	\$18B
5	ILLINOIS	\$18B

DOMESTIC EXPORTS

1	GEORGIA	\$22B
2	TEXAS	\$19B
3	CALIFORNIA	\$15B
4	NORTH CAROLINA	\$12B
5	NEW YORK	\$10B

INTERNATIONAL IMPORTS

1	CHINA	\$9.5B
2	JAPAN	\$6.5B
3	BRAZIL	\$6.4B
4	MEXICO	\$4.5B
5	CHILE	\$3.7B

INTERNATIONAL EXPORTS

1	BRAZIL	\$13.4B
2	COLOMBIA	\$4.2B
3	ARGENTINA	\$3.6B
4	DOMINICAN REPUBLIC	\$3.1B
5	CHILE	\$3B

TRANSPORTATION STATISTICS AND FREIGHT MOVEMENT BY MODE



83%
TONNAGE

71%
VALUE

123,104 Public roadway mileage
12,130 State Highway System (SHS) mileage
30.7M Daily truck miles traveled on SHS
98 Public truck parking facilities



3.5%
TONNAGE

2.9%
VALUE

15 Deepwater seaports
4.1M Twenty-foot equivalent units (TEUs)
16.8M Annual cruise passengers



6.7%
TONNAGE

1.8%
VALUE

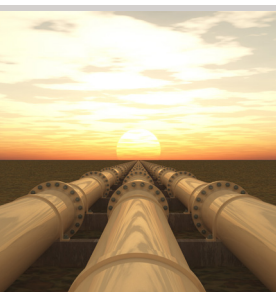
2,936 Miles of roads
6.9M Annual rail passenger traffic



0.1%
TONNAGE

5.4%
VALUE

129 Public use airports
20 Commercial service airports
2 Active spaceports



3.6%
TONNAGE

1%
VALUE

5,899 Miles of gas transmission and hazardous liquid pipelines



3.1%
TONNAGE

17.9%
VALUE

Includes shipments by multiple modes and by parcel delivery services, U.S. Postal Service, or couriers (capped at 150 pounds). This category is not limited to containerized or trailer-on-flatcar shipments.

FLORIDA COMMODITY FLOWS (2018-2045)



IMPORTS



WITHIN FL



EXPORTS

	2018	2045	2018	2045	2018	2045
TONNAGE	142M	190M	656M	761M	57M	103M
VALUE	\$321B	\$690B	\$402B	\$844B	\$180B	\$606B

Freight Analysis Framework (FAF) 4.5.1.



Rickey Fitzgerald
 Manager, Freight & Multimodal Operations
 Florida Department of Transportation
 605 Suwannee Street, Tallahassee, FL 32399
 Rickey.Fitzgerald@dot.state.fl.us
 850.414.4702