

FREIGHT AND LOGISTICS OVERVIEW

FEBRUARY 2021

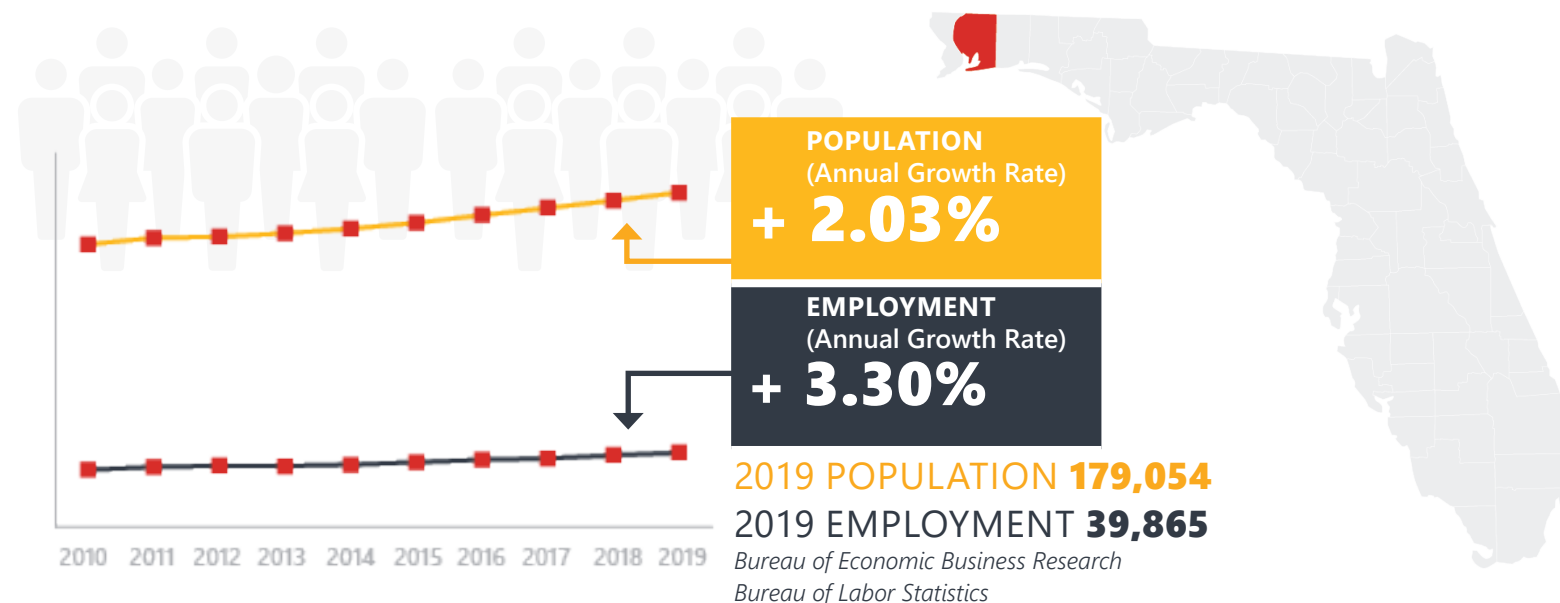
SANTA ROSA COUNTY



Mission: The department will provide a safe transportation system that ensures the mobility of people and goods, enhances economic prosperity, and preserves the quality of our environment and communities.

SANTA ROSA COUNTY HIGHLIGHTS

"FLORIDA'S MOST RELAXING PLACE"		AREA (SQ . MILES)	1,174
COUNTY SEAT	MILTON	LARGEST CITY (SIZE)	MILTON

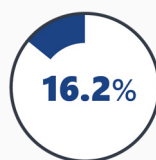


LARGEST INDUSTRY SECTORS BY EMPLOYMENT (2019)

Office of Economic and Demographic Research



Trade,
transportation
& utilities



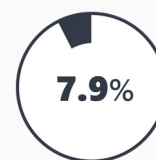
Leisure &
hospitality



Education &
health
services



Professional &
business
services



Construction

FASTEST GROWING INDUSTRIES (2010-2019)

LEISURE AND HOSPITALITY	JOBS ADDED	2,280
TRADE, TRANSPORTATION, AND UTILITIES		2,185
EDUCATION AND HEALTH SERVICES		1,531
CONSTRUCTION		987
PROFESSIONAL AND BUSINESS SERVICES		970

Bureau of Labor Statistics

DID YOU KNOW?

Navarre has become one of the fastest growing communities in Florida. In 1970, it was a small town of around 1,500. According to a 2020 estimate, its current population is 44,876.

The Gulf Islands National Seashore in Santa Rosa County offers nature lovers eight miles of federally protected, undeveloped shoreline, the longest continuous stretch of protected beaches in NW Florida.

The Gulf Breeze Zoo is a 50-acre zoo located in Gulf Breeze, Florida. It has over 900 exotic animals including rhinos, hippos, Western lowland gorillas, and orangutans that visitors can view during an African preserve train ride.

COMMODITY FLOW HIGHLIGHTS



IMPORTS

WITHIN COUNTY

EXPORTS

	2018	2045	2018	2045	2018	2045
Tonnage:	1.78 M	2.01 M	18.98 K	34.29 K	0.75 M	1.24 M
Value:	\$ 1.11 B	\$ 1.45 B	\$ 7.56 M	\$ 11.02 M	\$ 0.40 B	\$ 0.55 B



TOP COMMODITY by Tonnage, 2018



Nonmetallic Minerals	667,081
Warehouse, Distribution Center and Drayage Movements	253,691
Petroleum or Coal Products	241,636
Clay, Concrete, Glass, Stone	236,513
Food or Kindred Products	108,111

Waste or Scrap Materials	208,706
Chemicals or Allied Products	171,530
Petroleum or Coal Products	110,234
Clay, Concrete, Glass, Stone	97,905
Lumber or Wood Products	80,173



TOP COMMODITY by Value, 2018

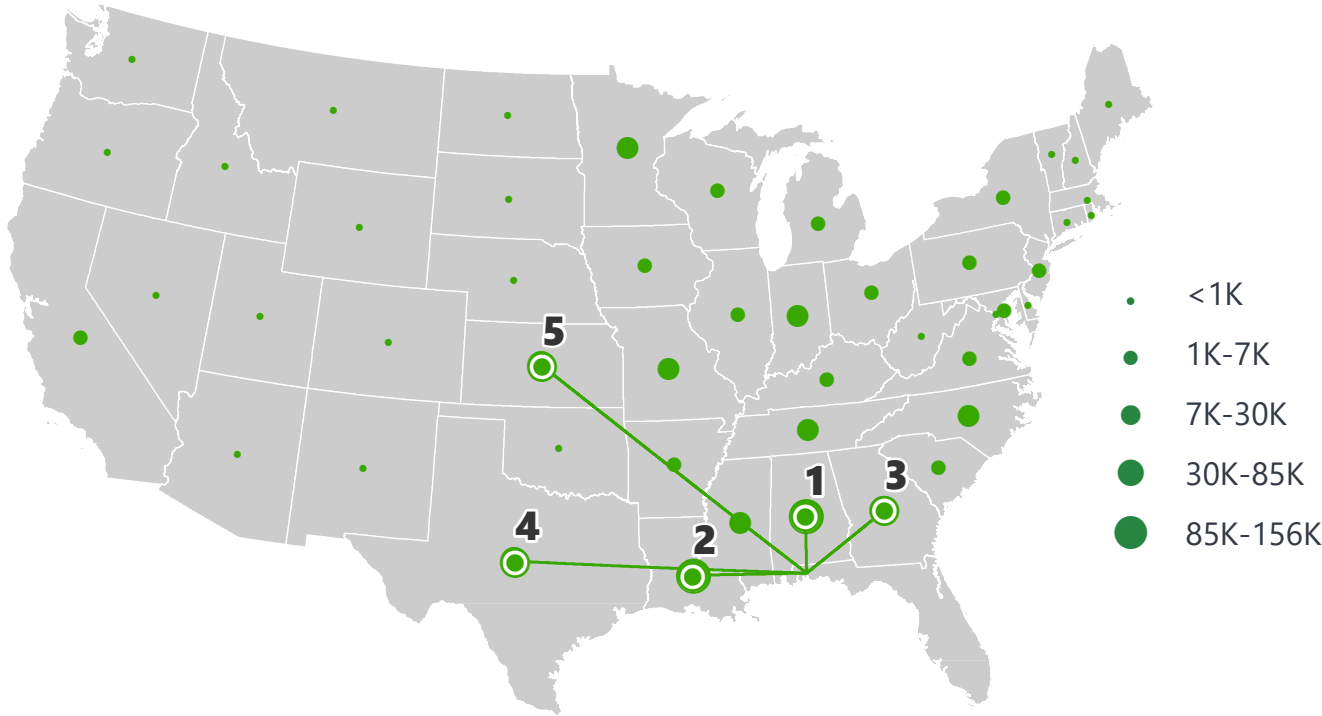


Warehouse, Distribution Center and Drayage Movements	\$ 311,867,871
Transportation Equipment	\$ 176,543,356
Petroleum or Coal Products	\$ 136,928,166
Food or Kindred Products	\$ 133,299,780
Chemicals or Allied Products	\$ 62,173,186

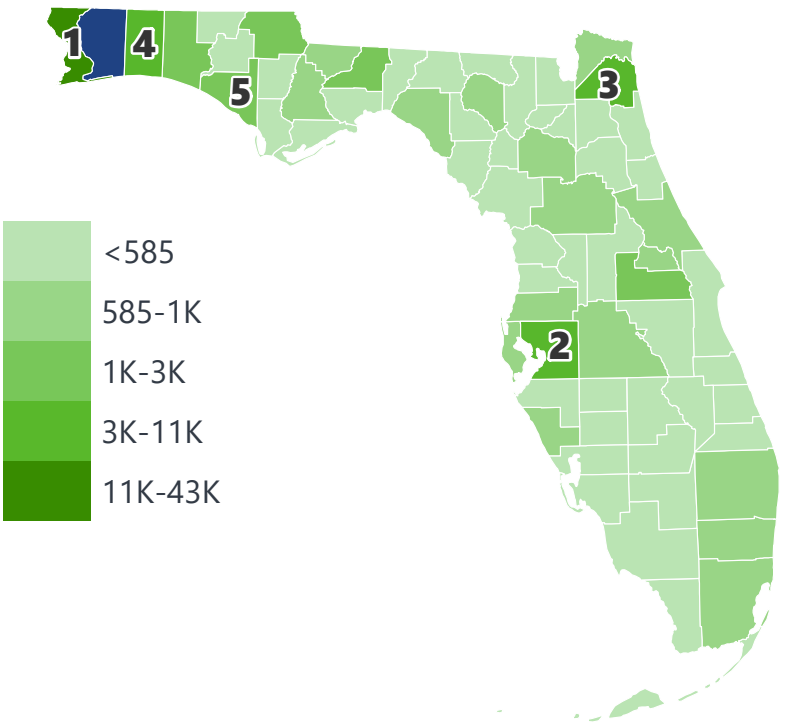
Chemicals or Allied Products	\$ 144,525,447
Lumber or Wood Products	\$ 69,528,479
Waste or Scrap Materials	\$ 52,652,105
Farm Products	\$ 31,156,336
Clay, Concrete, Glass, Stone	\$ 19,789,006

SANTA ROSA COUNTY EXPORTS AND IMPORTS

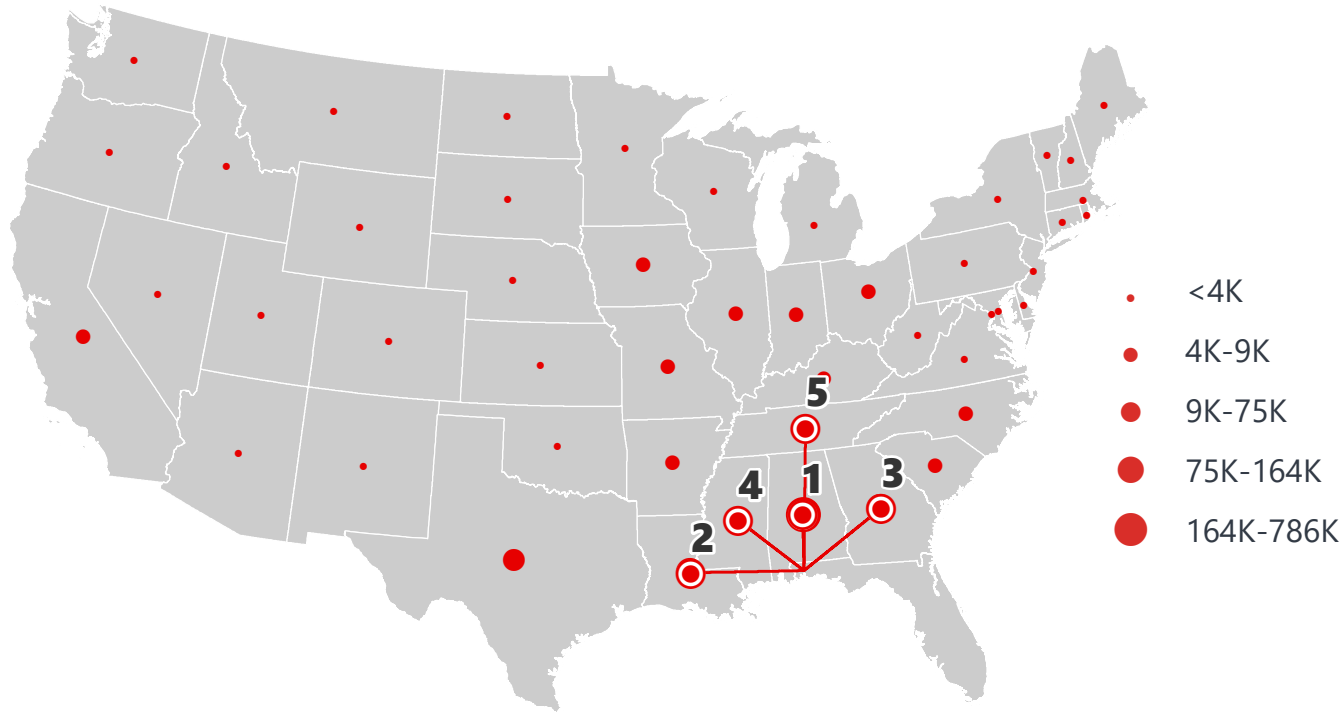
DOMESTIC EXPORTS (TONS)



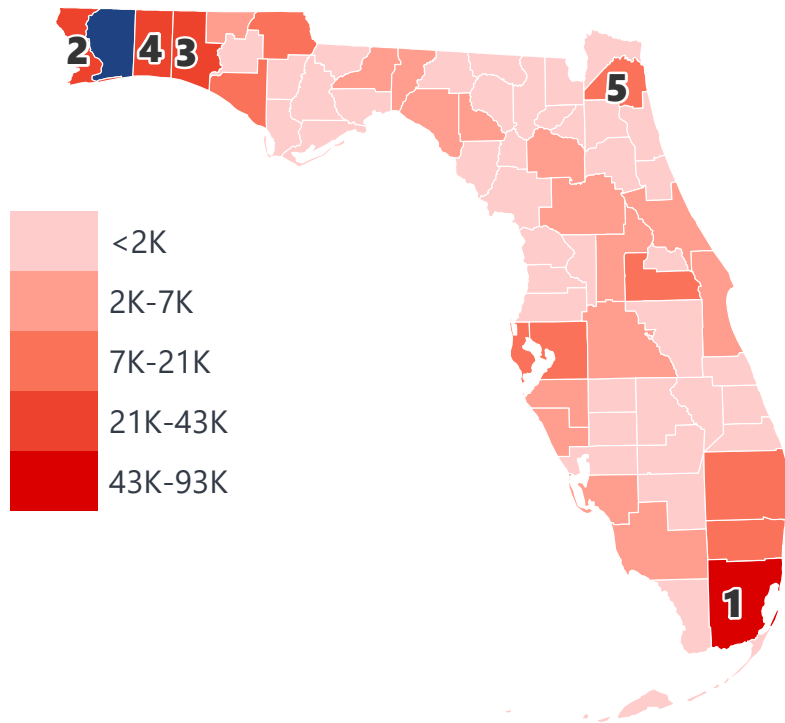
INTRASTATE EXPORTS (TONS)



DOMESTIC IMPORTS (TONS)



INTRASTATE IMPORTS (TONS)



DOMESTIC EXPORTS (TONNAGE)

1	Alabama	155,456
2	Louisiana	139,576
3	Georgia	84,857
4	Texas	67,473
5	Kansas	51,606

INTRASTATE EXPORTS (TONNAGE)

1	Escambia	42,643
2	Hillsborough	11,213
3	Duval	7,647
4	Okaloosa	7,165
5	Bay	3,375

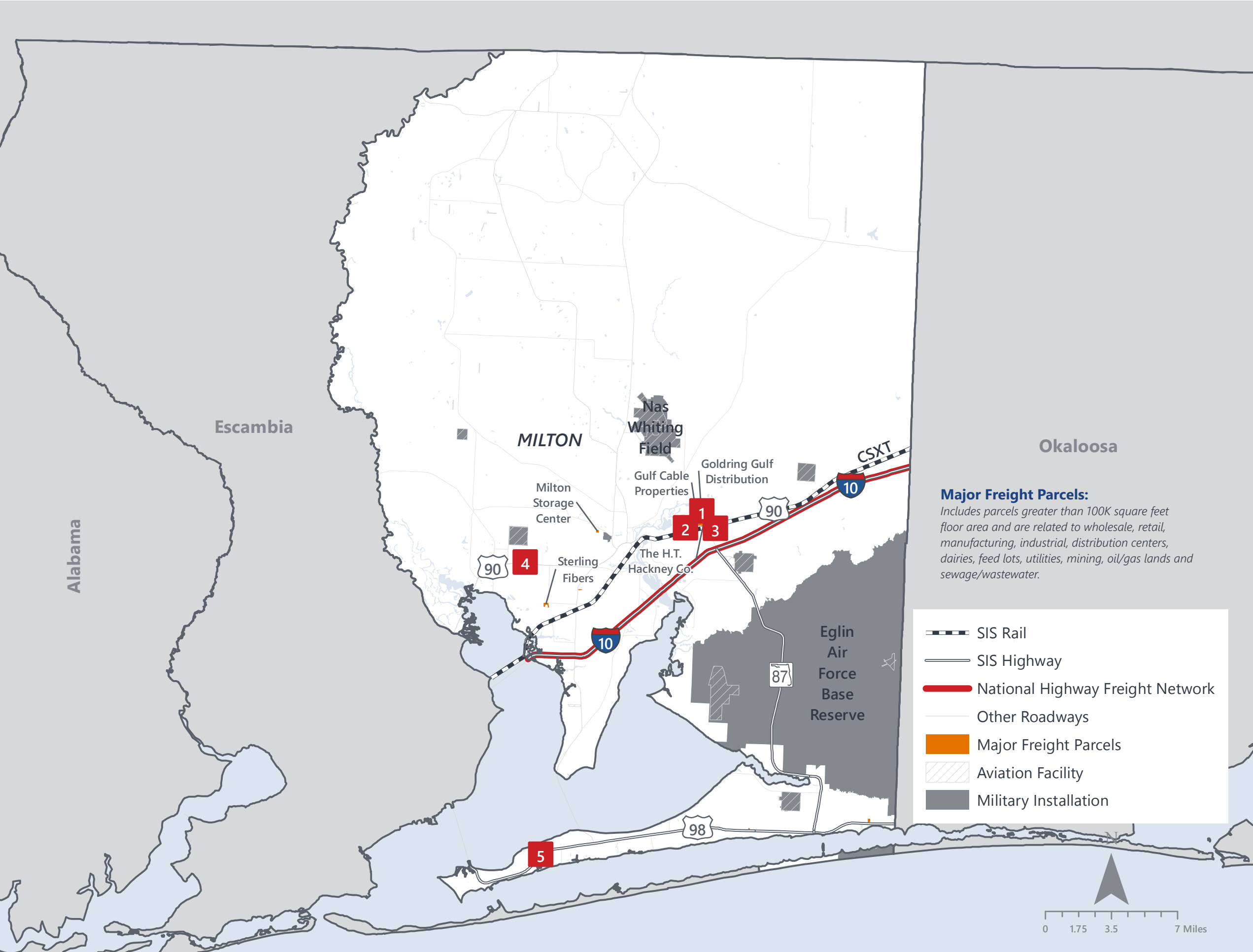
DOMESTIC IMPORTS (TONNAGE)

1	Alabama	785,242
2	Louisiana	163,804
3	Georgia	116,973
4	Mississippi	75,862
5	Tennessee	65,565

INTRASTATE IMPORTS (TONNAGE)

1	Miami-Dade	92,067
2	Escambia	42,772
3	Walton	42,689
4	Okaloosa	28,665
5	Duval	21,038

SANTA ROSA COUNTY FREIGHT INFRASTRUCTURE



LARGEST FREIGHT EMPLOYERS

1	Gulf Distributing	100-200
2	Gulf Cable	100-200
3	H T Hackney	100-200
4	Taminco	100-200
5	Avalex	50-100

MAJOR FREIGHT LAND USES

6.4 M SQ.FT Floor Area

60.43%	Warehousing and distribution centers
20.59%	Light manufacturing
10.24%	Heavy industrial
3.64%	Utilities
2.65%	Lumber yards, sawmills, planing mills

290.2 M SQ.FT LAND AREA

53.79%	Sewage disposal and waste land
15.41%	Warehousing and distribution centers
12.03%	Mining lands, petroleum lands, or gas lands
9.82%	Utilities
6.03%	Light manufacturing

Florida Department of Economic Opportunity, 2018
Florida Department of Revenue, 2019

MAJOR COUNTY COMMODITIES



IMPORTS



TOP COMMODITY by Tonnage, 2018 (relative to Florida)

FL Rank	Commodity	% Florida Share
20	Furniture or Fixtures	0.97%
26	Forest Products	0.91%
32	Warehouse, Distribution Center and Drayage Movements	0.60%
35	Clay, Concrete, Glass, Stone	0.57%
30	Nonmetallic Minerals	0.55%

EXPORTS



FL Rank	Commodity	% Florida Share
10	Forest Products	1.98%
14	Chemicals or Allied Products	1.26%
34	Lumber or Wood Products	0.86%
28	Waste or Scrap Materials	0.78%
20	Instruments, Photo and Optical Equipment	0.49%

TOP COMMODITY by Value, 2018 (relative to Florida)

FL Rank	Commodity	% Florida Share
21	Furniture or Fixtures	0.93%
27	Forest Products	0.87%
33	Marine Products	0.53%
30	Leather or Leather Products	0.47%
34	Clay, Concrete, Glass, Stone	0.46%

FL Rank	Commodity	% Florida Share
10	Forest Products	2.00%
22	Lumber or Wood Products	1.39%
16	Chemicals or Allied Products	0.87%
28	Waste or Scrap Materials	0.79%
37	Farm Products	0.35%



TRANSPORTATION STATISTICS AND FREIGHT MOVEMENT BY MODE



331 K | Daily Truck Miles Traveled
1.25 | Planning Time Index
1,974 | Public Roadway Mileage



40 Miles | Distance from closest major seaport (Port of Pensacola)



26.66 | Class I Mainline Miles (CSX)
- Class II Mainline Miles
- Class III Mainline Miles



35 Miles | Distance from closest major airport (Pensacola International Airport)

FLORIDA HIGHLIGHTS

3rd most populous US State

\$1T Gross Domestic Product

4th Largest US Economy and **17th Largest** Economy in World

Nation's **3rd largest** workforce

1 in 5 U.S. exporters are located in Florida

\$153B International Trade

1.76M jobs supported by Trade, Transportation and Utilities industry sector

1.25M jobs supported by Leisure and Hospitality industry sector

131M annual visitors

CAPITAL **TALLAHASSEE**

AREA (SQ. MILES) **53,624**

LARGEST CITY (SIZE) **JACKSONVILLE**

POPULATION (2019) **21,208,589**

ANNUAL POP GROWTH RATE (2010-2019) **1.4%**

EMPLOYMENT (2019) **8,884,065**

ANNUAL EMP GROWTH RATE (2010-2019) **2.8%**

*Bureau of Economic Business Research,
Bureau of Labor Statistics*

DOMESTIC IMPORTS

1	GEORGIA	\$44B
2	CALIFORNIA	\$29B
3	TEXAS	\$26B
4	ALABAMA	\$18B
5	ILLINOIS	\$18B

DOMESTIC EXPORTS

1	GEORGIA	\$22B
2	TEXAS	\$19B
3	CALIFORNIA	\$15B
4	NORTH CAROLINA	\$12B
5	NEW YORK	\$10B

INTERNATIONAL IMPORTS

1	CHINA	\$9.5B
2	JAPAN	\$6.5B
3	BRAZIL	\$6.4B
4	MEXICO	\$4.5B
5	CHILE	\$3.7B

INTERNATIONAL EXPORTS

1	BRAZIL	\$13.4B
2	COLOMBIA	\$4.2B
3	ARGENTINA	\$3.6B
4	DOMINICAN REPUBLIC	\$3.1B
5	CHILE	\$3B

TRANSPORTATION STATISTICS AND FREIGHT MOVEMENT BY MODE



83%
TONNAGE

71%
VALUE

123,104 Public roadway mileage
12,130 State Highway System (SHS) mileage
30.7M Daily truck miles traveled on SHS
98 Public truck parking facilities



3.5%
TONNAGE

2.9%
VALUE

15 Deepwater seaports
4.1M Twenty-foot equivalent units (TEUs)
16.8M Annual cruise passengers



6.7%
TONNAGE

1.8%
VALUE

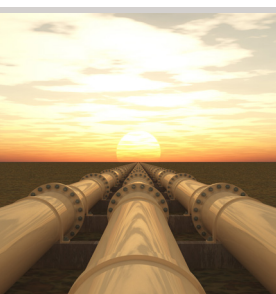
2,936 Miles of roads
6.9M Annual rail passenger traffic



0.1%
TONNAGE

5.4%
VALUE

129 Public use airports
20 Commercial service airports
2 Active spaceports



3.6%
TONNAGE

1%
VALUE

5,899 Miles of gas transmission and hazardous liquid pipelines



3.1%
TONNAGE

17.9%
VALUE

Includes shipments by multiple modes and by parcel delivery services, U.S. Postal Service, or couriers (capped at 150 pounds). This category is not limited to containerized or trailer-on-flatcar shipments.

FLORIDA COMMODITY FLOWS (2018-2045)



IMPORTS



WITHIN FL



EXPORTS

	2018	2045	2018	2045	2018	2045
TONNAGE	142M	190M	656M	761M	57M	103M
VALUE	\$321B	\$690B	\$402B	\$844B	\$180B	\$606B

Freight Analysis Framework (FAF) 4.5.1.



Rickey Fitzgerald
 Manager, Freight & Multimodal Operations
 Florida Department of Transportation
 605 Suwannee Street, Tallahassee, FL 32399
 Rickey.Fitzgerald@dot.state.fl.us
 850.414.4702