

# FREIGHT AND LOGISTICS OVERVIEW

FEBRUARY 2021

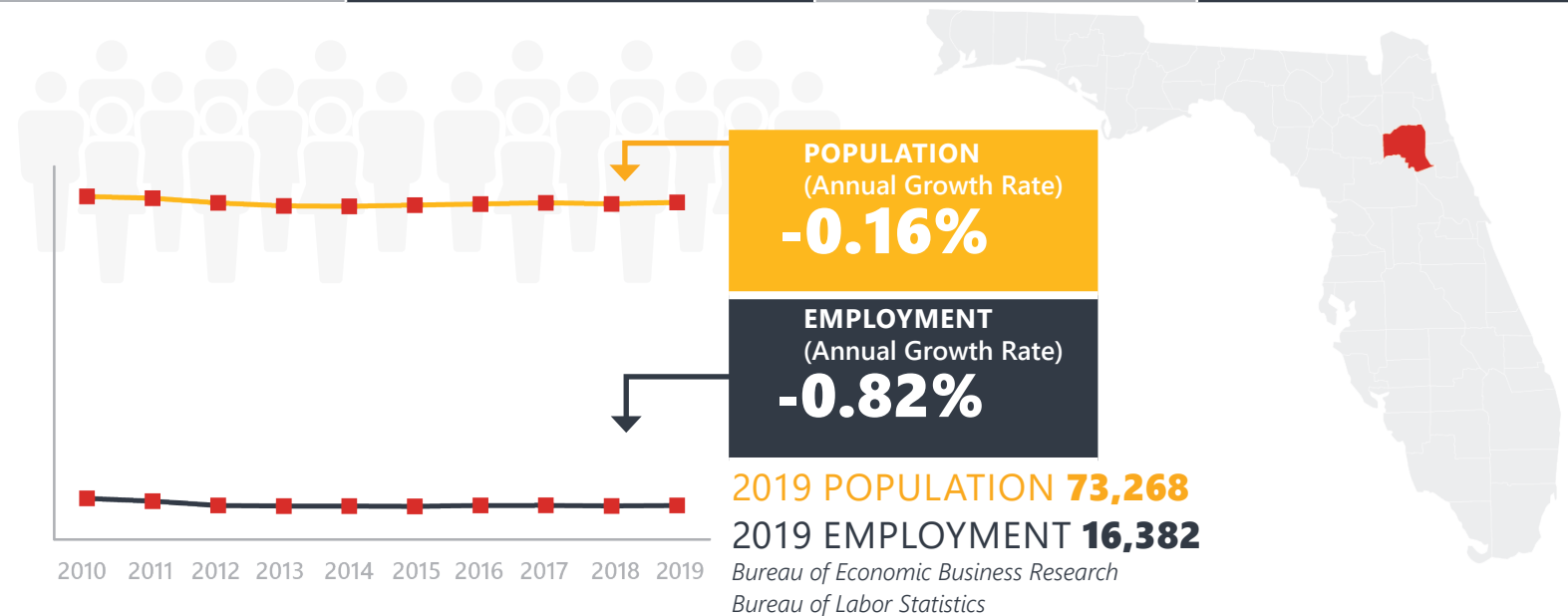
# PUTNAM COUNTY



*Mission: The department will provide a safe transportation system that ensures the mobility of people and goods, enhances economic prosperity, and preserves the quality of our environment and communities.*

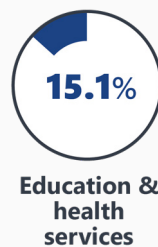
# PUTNAM COUNTY HIGHLIGHTS

"GEM CITY OF THE ST. JOHNS RIVER"		AREA (SQ . MILES)	827
COUNTY SEAT	PALATKA	LARGEST CITY (SIZE)	PALATKA



## LARGEST INDUSTRY SECTORS BY EMPLOYMENT (2019)

Office of Economic and Demographic Research



## FASTEST GROWING INDUSTRIES (2010-2019)

LEISURE AND HOSPITALITY	JOBS ADDED	408
EDUCATION AND HEALTH SERVICES		182
CONSTRUCTION		154
TRADE, TRANSPORTATION, AND UTILITIES		38
INFORMATION		6

Bureau of Labor Statistics

## DID YOU KNOW?

Bellamy Road in Putnam County was the first major US federal highway in early territorial Florida.

Putnam County is a designated HUB Zone and Federal Trade Zone and offers low costs of doing business.

The Palatka Mural Tour features more than 30 artistic renderings that depict the historical, cultural and natural riches of Putnam County.



# COMMODITY FLOW HIGHLIGHTS



## IMPORTS

## WITHIN COUNTY

## EXPORTS

	2018	2045	2018	2045	2018	2045
Tonnage:	6.2 M	4.37 M	87.89 K	194.14 K	1.8 M	3.33 M
Value:	\$ 1.33 B	\$ 1.46 B	\$ 3.97 M	\$ 4.4 M	\$ 0.65 B	\$ 1.09 B



### TOP COMMODITY by Tonnage, 2018

Coal	2,798,088
Nonmetallic Minerals	1,630,670
Petroleum or Coal Products	1,095,806
Lumber or Wood Products	192,814
Clay, Concrete, Glass, Stone	168,968



Nonmetallic Minerals	1,047,122
Pulp, Paper or Allied Products	206,100
Clay, Concrete, Glass, Stone	172,618
Lumber or Wood Products	99,771
Waste or Scrap Materials	94,207



### TOP COMMODITY by Value, 2018

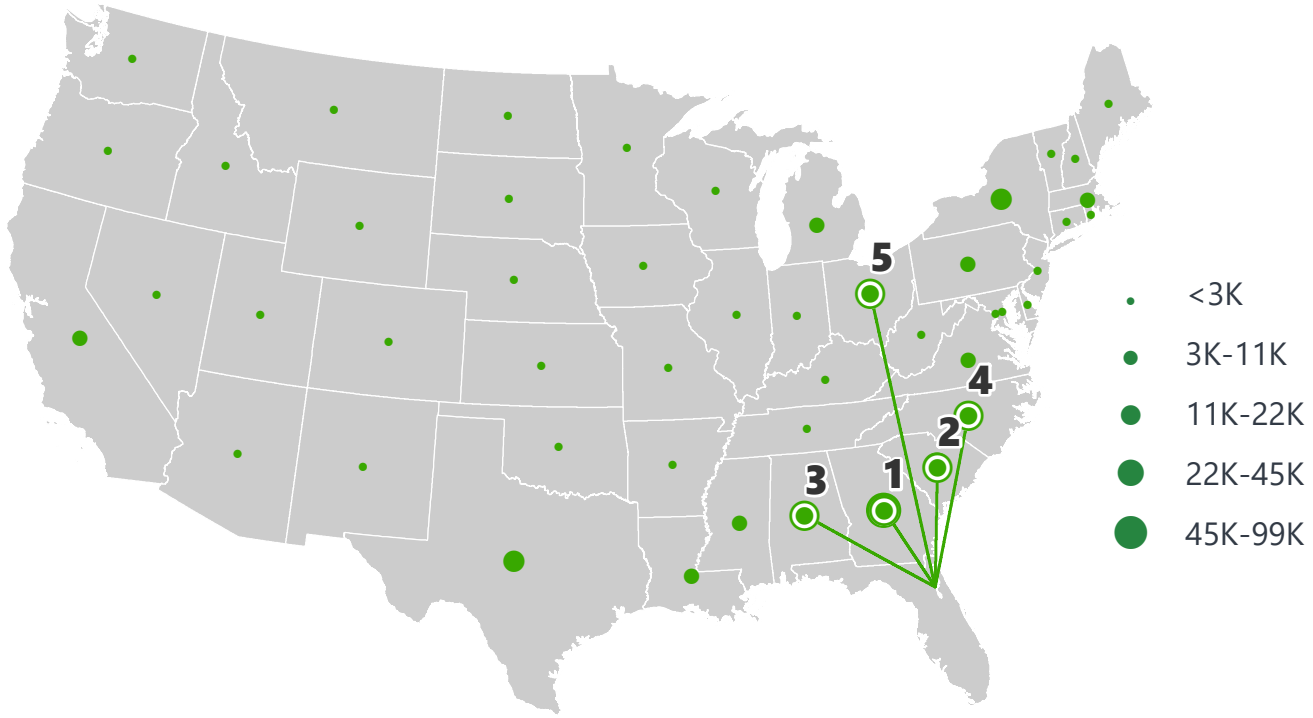
Petroleum or Coal Products	\$ 679,895,365
Warehouse, Distribution Center and Drayage Movements	\$ 189,574,861
Coal	\$ 86,923,300
Chemicals or Allied Products	\$ 69,582,827
Lumber or Wood Products	\$ 59,480,599



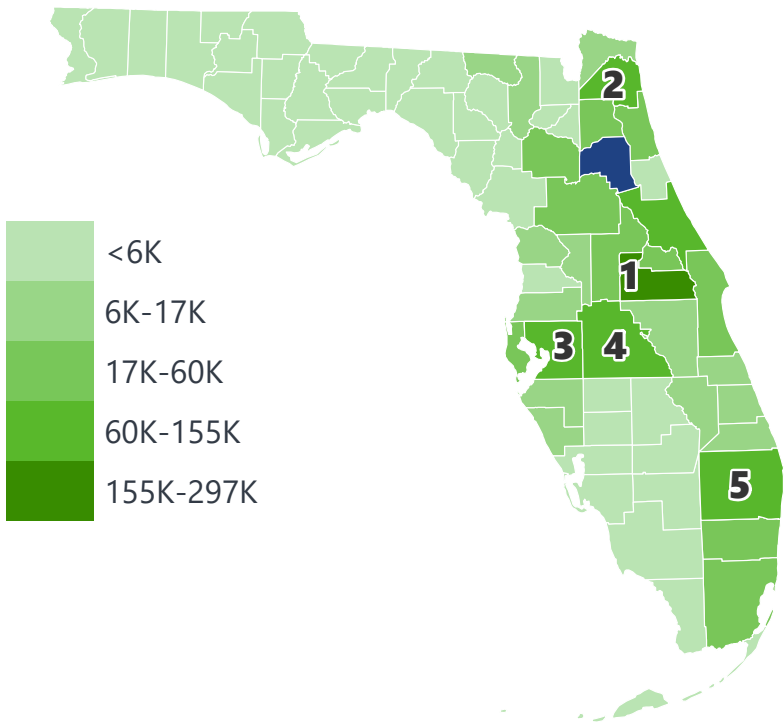
Pulp, Paper or Allied Products	\$ 187,023,151
Warehouse, Distribution Center and Drayage Movements	\$ 141,851,121
Lumber or Wood Products	\$ 61,006,479
Clay, Concrete, Glass, Stone	\$ 59,502,736
Chemicals or Allied Products	\$ 56,944,590

# PUTNAM COUNTY EXPORTS AND IMPORTS

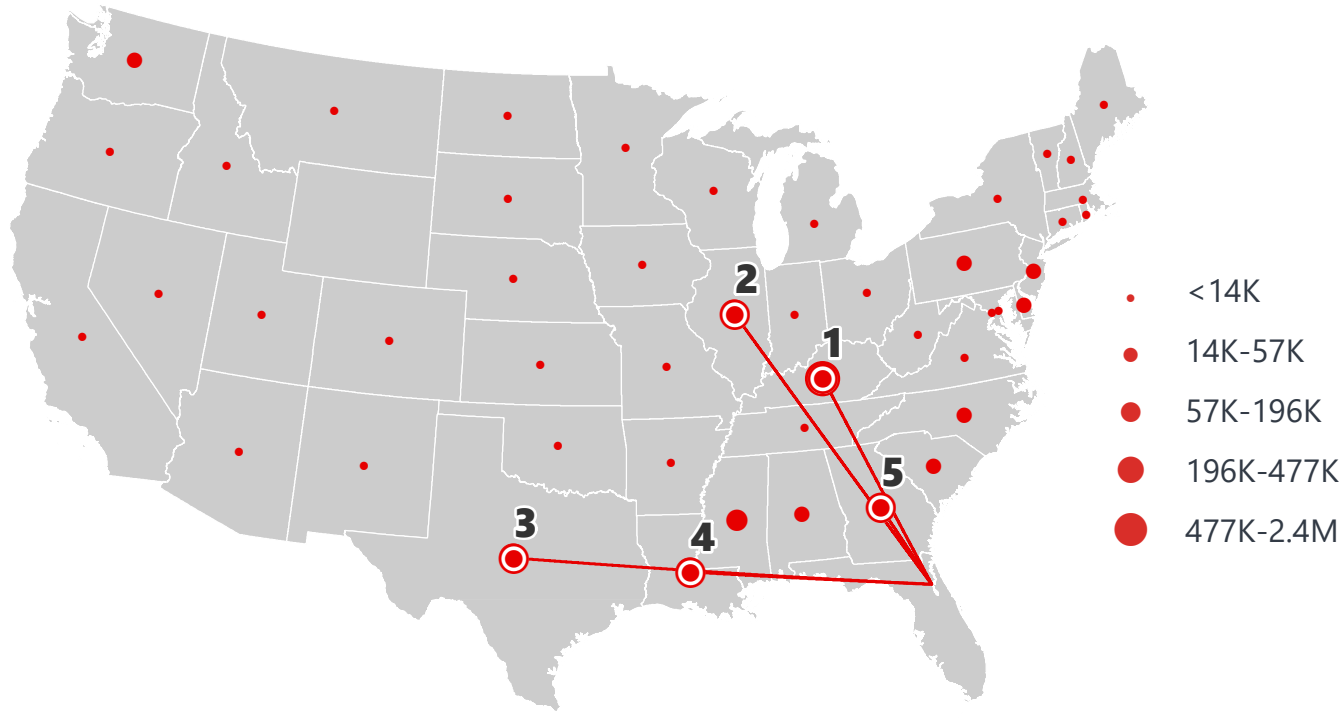
DOMESTIC EXPORTS (TONS)



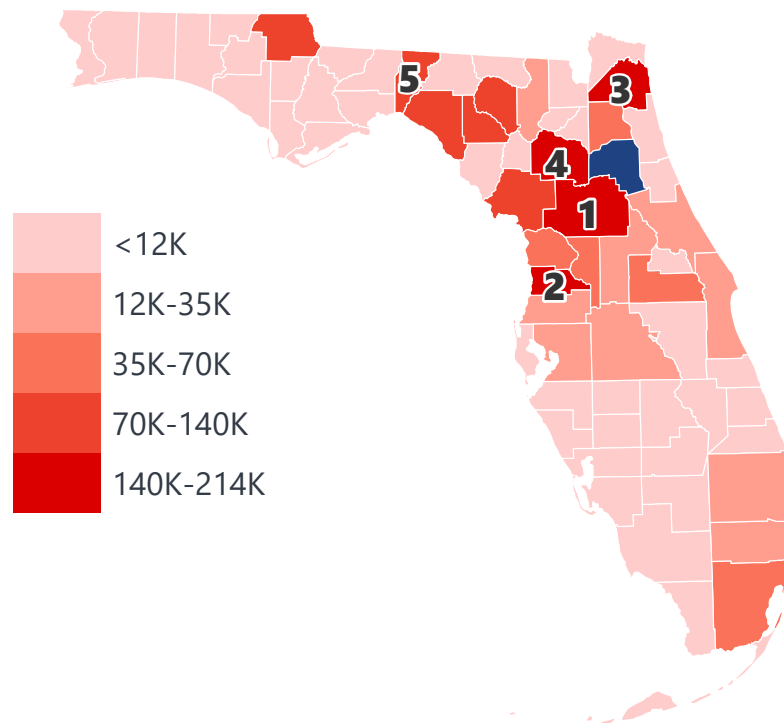
INTRASTATE EXPORTS (TONS)



DOMESTIC IMPORTS (TONS)



INTRASTATE IMPORTS (TONS)



## DOMESTIC EXPORTS (TONNAGE)

1	Georgia	98,673
2	South Carolina	45,783
3	Alabama	22,752
4	North Carolina	21,711
5	Ohio	12,602

## INTRASTATE EXPORTS (TONNAGE)

1	Orange	296,999
2	Duval	154,456
3	Hillsborough	98,106
4	Polk	81,688
5	Palm Beach	79,681

## DOMESTIC IMPORTS (TONNAGE)

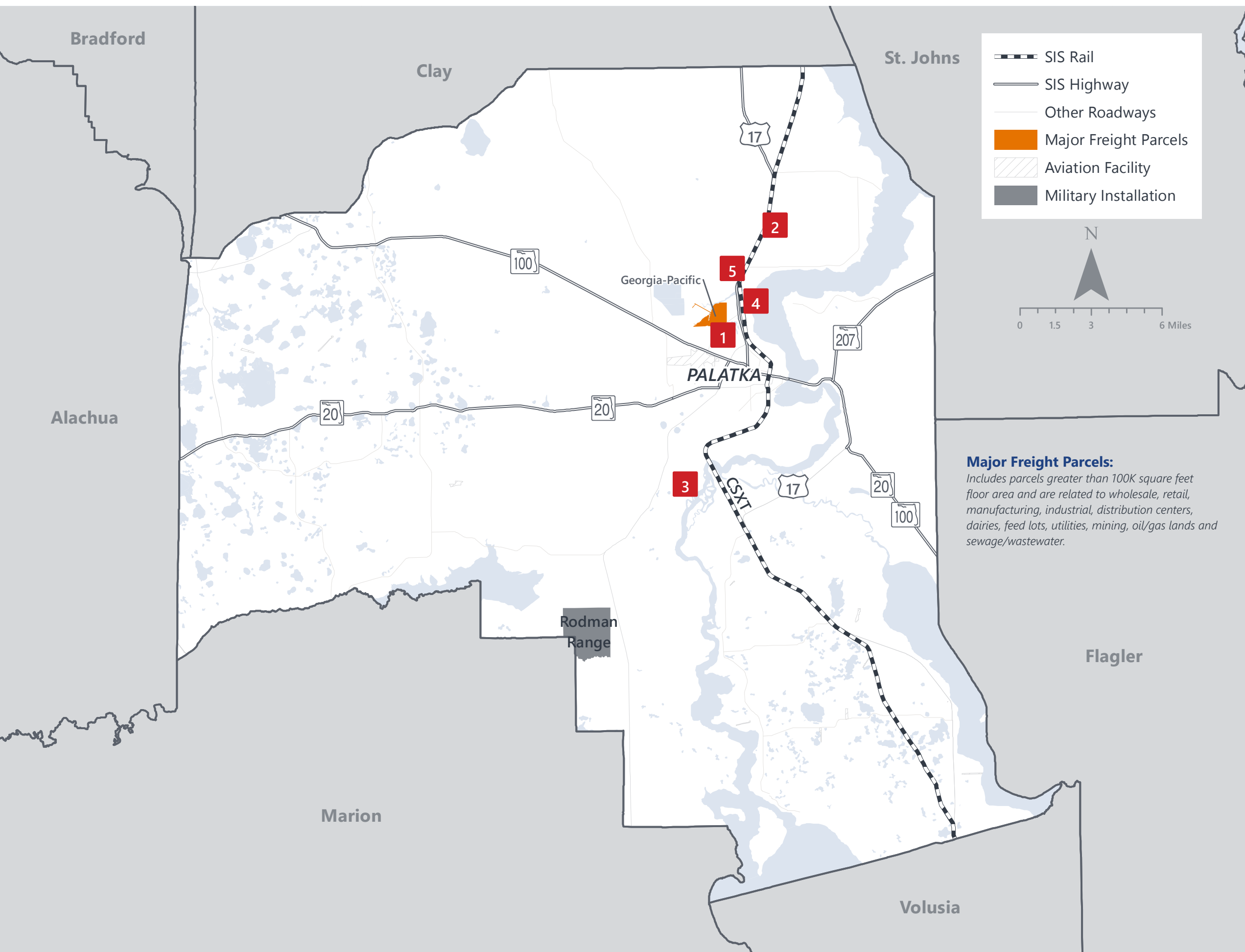
1	Kentucky	2,326,284
2	Illinois	476,794
3	Texas	432,593
4	Louisiana	311,826
5	Georgia	195,699

## INTRASTATE IMPORTS (TONNAGE)

1	Marion	213,026
2	Hernando	181,918
3	Duval	174,518
4	Alachua	153,464
5	Jefferson	140,627



# PUTNAM COUNTY FREIGHT INFRASTRUCTURE



**Major Freight Parcels:**  
*Includes parcels greater than 100K square feet floor area and are related to wholesale, retail, manufacturing, industrial, distribution centers, dairies, feed lots, utilities, mining, oil/gas lands and sewage/wastewater.*

## LARGEST FREIGHT EMPLOYERS

1	Georgia Pacific Consumer	900-1K
2	Continental Building	100-200
3	St. Johns Ship Building	100-200
4	Veritas Steel	100-200
5	Marble Today	50-100

## MAJOR FREIGHT LAND USES

1.9 M SQ.FT Floor Area

25.81%	Light manufacturing
25.35%	Heavy industrial
18.11%	Warehousing and distribution centers
12.94%	Wholesale outlets, produce houses, manufacturing outlets
6.05%	Fruit, vegetable and meat packing plants

561.4 M SQ.FT LAND AREA

37.27%	Utilities
20.51%	Sewage disposal and waste land
19.61%	Mining lands, petroleum lands, or gas lands
8.18%	Heavy industrial
5.88%	Light manufacturing

Florida Department of Economic Opportunity, 2018  
Florida Department of Revenue, 2019

# MAJOR COUNTY COMMODITIES



## IMPORTS



### TOP COMMODITY by Tonnage, 2018 (relative to Florida)

FL Rank	Commodity	% Florida Share
1	Coal	27.60%
12	Forest Products	3.26%
13	Pulp, Paper or Allied Products	1.67%
14	Petroleum or Coal Products	1.56%
18	Lumber or Wood Products	1.44%

## EXPORTS



FL Rank	Commodity	% Florida Share
5	Forest Products	4.03%
7	Pulp, Paper or Allied Products	3.68%
30	Lumber or Wood Products	1.07%
26	Nonmetallic Minerals	1.01%
20	Rubber or Misc. Plastics	0.62%

### TOP COMMODITY by Value, 2018 (relative to Florida)

FL Rank	Commodity	% Florida Share
1	Coal	27.57%
12	Forest Products	2.94%
11	Petroleum or Coal Products	1.62%
22	Nonmetallic Minerals	1.03%
19	Pulp, Paper or Allied Products	0.83%

FL Rank	Commodity	% Florida Share
5	Forest Products	4.01%
10	Pulp, Paper or Allied Products	3.34%
25	Lumber or Wood Products	1.22%
27	Clay, Concrete, Glass, Stone	0.78%
28	Nonmetallic Minerals	0.59%





# TRANSPORTATION STATISTICS AND FREIGHT MOVEMENT BY MODE



**100 K** | Daily Truck Miles Traveled  
- Planning Time Index  
**1,972** | Public Roadway Mileage



**1 Major Seaport** | Putnam County Barge Port



**39.27** | Class I Mainline Miles (CSX)  
- Class II Mainline Miles  
- Class III Mainline Miles



**75 Miles** | Distance from closest airport  
(Jacksonville International Airport)



# FLORIDA HIGHLIGHTS

**3rd most populous** US State

**\$1T Gross** Domestic Product

**4th Largest** US Economy and **17th Largest** Economy in World

Nation's **3rd largest** workforce

**1 in 5 U.S. exporters** are located in Florida

**\$153B** International Trade

**1.76M jobs supported** by Trade, Transportation and Utilities industry sector

**1.25M jobs supported** by Leisure and Hospitality industry sector

**131M** annual visitors

CAPITAL **TALLAHASSEE**

AREA  
(SQ. MILES) **53,624**

LARGEST  
CITY (SIZE) **JACKSONVILLE**

POPULATION  
(2019) **21,208,589**

ANNUAL POP  
GROWTH RATE  
(2010-2019) **1.4%**

EMPLOYMENT  
(2019) **8,884,065**

ANNUAL EMP  
GROWTH RATE  
(2010-2019) **2.8%**

*Bureau of Economic Business Research,  
Bureau of Labor Statistics*

## DOMESTIC IMPORTS

<b>1</b>	<b>GEORGIA</b>	\$44B
<b>2</b>	<b>CALIFORNIA</b>	\$29B
<b>3</b>	<b>TEXAS</b>	\$26B
<b>4</b>	<b>ALABAMA</b>	\$18B
<b>5</b>	<b>ILLINOIS</b>	\$18B

## DOMESTIC EXPORTS

<b>1</b>	<b>GEORGIA</b>	\$22B
<b>2</b>	<b>TEXAS</b>	\$19B
<b>3</b>	<b>CALIFORNIA</b>	\$15B
<b>4</b>	<b>NORTH CAROLINA</b>	\$12B
<b>5</b>	<b>NEW YORK</b>	\$10B

## INTERNATIONAL IMPORTS

<b>1</b>	<b>CHINA</b>	\$9.5B
<b>2</b>	<b>JAPAN</b>	\$6.5B
<b>3</b>	<b>BRAZIL</b>	\$6.4B
<b>4</b>	<b>MEXICO</b>	\$4.5B
<b>5</b>	<b>CHILE</b>	\$3.7B

## INTERNATIONAL EXPORTS

<b>1</b>	<b>BRAZIL</b>	\$13.4B
<b>2</b>	<b>COLOMBIA</b>	\$4.2B
<b>3</b>	<b>ARGENTINA</b>	\$3.6B
<b>4</b>	<b>DOMINICAN REPUBLIC</b>	\$3.1B
<b>5</b>	<b>CHILE</b>	\$3B

# TRANSPORTATION STATISTICS AND FREIGHT MOVEMENT BY MODE



**83%**  
TONNAGE

**71%**  
VALUE

**123,104** Public roadway mileage  
**12,130** State Highway System (SHS) mileage  
**30.7M** Daily truck miles traveled on SHS  
**98** Public truck parking facilities



**3.5%**  
TONNAGE

**2.9%**  
VALUE

**15** Deepwater seaports  
**4.1M** Twenty-foot equivalent units (TEUs)  
**16.8M** Annual cruise passengers



**6.7%**  
TONNAGE

**1.8%**  
VALUE

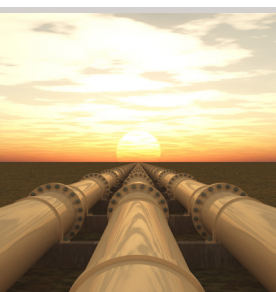
**2,936** Miles of roads  
**6.9M** Annual rail passenger traffic



**0.1%**  
TONNAGE

**5.4%**  
VALUE

**129** Public use airports  
**20** Commercial service airports  
**2** Active spaceports



**3.6%**  
TONNAGE

**1%**  
VALUE

**5,899** Miles of gas transmission and hazardous liquid pipelines



**3.1%**  
TONNAGE

**17.9%**  
VALUE

Includes shipments by multiple modes and by parcel delivery services, U.S. Postal Service, or couriers (capped at 150 pounds). This category is not limited to containerized or trailer-on-flatcar shipments.

# FLORIDA COMMODITY FLOWS (2018-2045)



IMPORTS



WITHIN FL



EXPORTS

	2018	2045	2018	2045	2018	2045
TONNAGE	142M	190M	656M	761M	57M	103M
VALUE	\$321B	\$690B	\$402B	\$844B	\$180B	\$606B

Freight Analysis Framework (FAF) 4.5.1.



**Rickey Fitzgerald**  
**Manager, Freight & Multimodal Operations**  
 Florida Department of Transportation  
 605 Suwannee Street, Tallahassee, FL 32399  
 Rickey.Fitzgerald@dot.state.fl.us  
 850.414.4702